

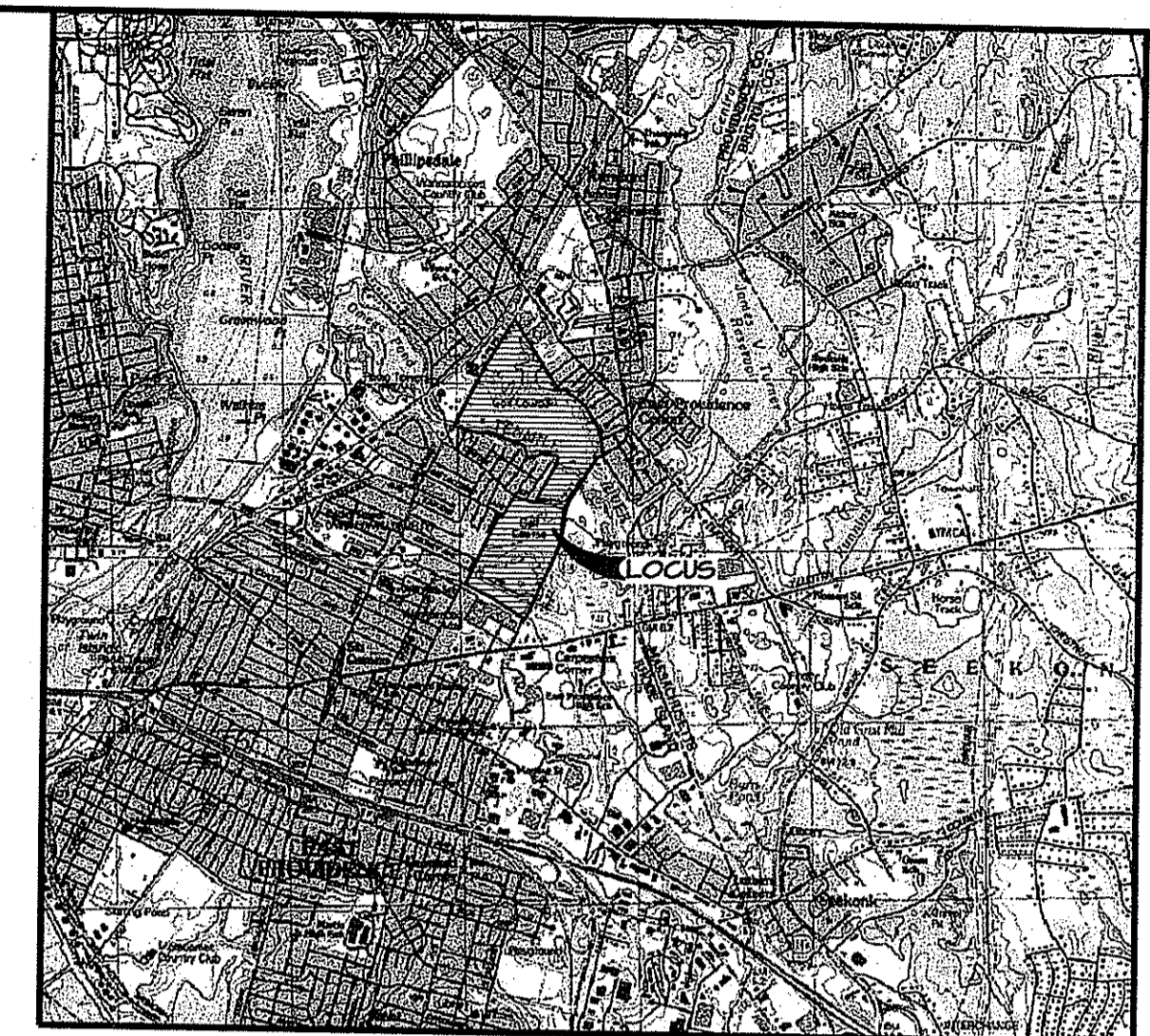
**KEY PLAN**  
SCALE 1" = 200'

NOTE: EXISTING COURSE LAYOUT SHOWN

**FUTURE COURSE LAYOUT**

EXISTING NUMBER PROPOSED NUMBER

1	1
2	2
3	3
4	5
5	16
6	14
7	4
8	5
9	6
10	7
11	8
12	4
13	6
14	11
15	12
16	13
17	7
18	12
19	13
20	12



**LOCUS MAP**  
SCALE: NOT TO SCALE

Kindly be advised that this Permit is not equivalent to a verification of the type or extent of freshwater wetlands on site.

DEPARTMENT OF ENVIRONMENTAL MANAGEMENT  
OFFICE OF WATER RESOURCES  
FRESHWATER WETLANDS PROGRAM  
APPROVED WITH CONDITIONS  
AS SPECIFIED IN THE LETTER OF APPROVAL  
DATED MAY 05 2004 FILE # 03-25-44  
NO CHANGES ALLOWED WITHOUT PRIOR APPROVAL.  
APPROVED PLANS MUST BE AT CONSTRUCTION SITE.

*W. Joseph Conroy*

**GENERAL NOTES**

1. ALL WORK AND MATERIALS SHALL CONFORM WITH THE PROVISIONS OF THE RIDOT STANDARD SPECIFICATIONS FOR ROAD AND BRIDGE CONSTRUCTION (1997) AND CITY OF EAST PROVIDENCE REGULATIONS OR REQUIREMENTS.
2. UNDERGROUND UTILITY INFORMATION HAS BEEN PLOTTED FROM AVAILABLE DATA AND IS NOT COMPLETE. PRIOR TO ANY EXCAVATION, CONTACT THE OWNER AND DIG SAFE TO ESTABLISH MORE PRECISE LOCATIONS ON THE GROUND.
3. INSTALL EROSION AND SEDIMENTATION CONTROLS PRIOR TO STARTING ANY OTHER WORK. REFER TO SHEETS C-11 THRU C-14 FOR INFORMATION CONCERNING THIS ACTIVITY. NOTE THAT SUCH CONTROLS MUST BE EFFECTIVELY MAINTAINED THROUGHOUT THE ENTIRE CONSTRUCTION PERIOD.

**INDEX OF DRAWINGS**

TITLE	SHEET NUMBER
COVER SHEET	C-1
NOTES, DETAILS & LEGEND	C-2
EXISTING CONDITIONS	C-3 THRU C-6
PROPOSED IMPROVEMENTS	C-7 THRU C-10
EROSION & SEDIMENT CONTROL	C-11 THRU C-14
STREAM CHANNEL PLAN	C-15
BRIDGE PLAN & DETAILS	C-16 & C-17

**OWNER / APPLICANT**  
AGAWAM HUNT  
15 ROGER WILLIAMS AVENUE  
P.O. BOX 4817  
RUMFORD, RI 02916-0817  
(401)434-0980

**GOLF COURSE CONSULTANT**  
HANSE GOLF COURSE DESIGN INCORPORATED  
131 GRUBB ROAD  
MALVERN, PA 19355  
(610)651-2471

**EAST PROVIDENCE ASSESSORS MAP REFERENCE**  
MAP 404 BLOCK 3 LOT 4 MAR 18 2004  
MAP 404 BLOCK 1B LOT 1B  
MAP 405 BLOCK 3 LOT 5

REVISIONS			GOLF COURSE IMPROVEMENTS	
NO.	DATE		AGAWAM HUNT 15 ROGER WILLIAMS AVE. RUMFORD, RHODE ISLAND	
			CAPUTO AND WICK LTD.	
			1150 PAWTUCKET AVE. RUMFORD, R.I. 02916 401-434-8880	DATE October 2003

REVISED MARCH 2004

**EROSION AND SEDIMENTATION CONTROL NOTES**

- CONSTRUCTION ACCESS TO PORTIONS OF THE COURSE LOCATED NORTH OF CENTRE STREET SHALL BE RESTRICTED TO THE SINGLE POINT SHOWN ON THE PLAN (ADJACENT TO THE MAINTENANCE GARAGE). CONSTRUCTION ACCESS TO EXISTING HOLE 7 MAY BE FROM PRISCILLA AVENUE. CONSTRUCTION ACCESS TO PORTIONS OF THE COURSE LOCATED SOUTHERLY OF CENTRE STREET MAY OCCUR AT TWO POINTS SHOWN ON THE PLAN. ALL ACCESS MUST BE COORDINATED WITH THE GOLF COURSE SUPERINTENDENT PRIOR TO MOBILIZATION.
- APPROPRIATE PRECAUTIONS SHALL BE TAKEN TO PREVENT THE TRACKING OF SOIL FROM CONSTRUCTION EQUIPMENT BEYOND THE WORK AREAS.
- LIMITS OF DISTURBANCE DEPICTED ON THE PLANS AT WETLAND AREAS SHALL BE STRICTLY ADHERED TO.
- NO CONSTRUCTION DEBRIS, LITTER, OR OTHER UNAUTHORIZED MATERIALS ARE TO BE DEPOSITED ON THE WETLAND SIDE OF THE PERIMETER EROSION AND SEDIMENTATION CONTROLS AND/OR LIMITS OF DISTURBANCE.
- ACCESSIBLE RESERVES OF SILT FENCE, STAKES, HAYBALES, AND CRUSHED STONE ARE TO BE MAINTAINED ON SITE FOR ROUTINE MAINTENANCE AND IN THE EVENT OF UNANTICIPATED PROBLEMS REQUIRING EMERGENCY RESPONSE.
- SILT FENCE AND HAY BALES SHALL BE INSTALLED IN ACCORDANCE WITH THE DETAILS PROVIDED AND IN ACCORDANCE WITH TIMINGS SPECIFIED ON THE PLANS.
- ALL MATERIALS STOCKPILES TO REMAIN IDLE FOR MORE THAN 20 CONSECUTIVE DAYS ARE TO BE RINGED WITH EITHER STAKED HAY BALES OR SILT FENCE.
- ALL AREAS DISTURBED AS A RESULT OF CONSTRUCTION ACTIVITIES ARE TO BE LOAMED AND SEEDED IMMEDIATELY FOLLOWING FINAL GRADING. PLANTABLE LOAM SHALL BE APPLIED AT A DEPTH OF SIX INCHES.
- FOR GOLF COURSE AREAS TO BE HYDROSEED, THE HYDROSEED MIX SHALL CONTAIN AN APPROPRIATE TACIFYING AGENT. HAY OR STRAW MULCH SHALL BE SPREAD AS NEEDED AT THE DISCRETION OF THE ENGINEER AND/OR GOLF COURSE SUPERINTENDENT.
- ALL EROSION AND SEDIMENTATION CONTROLS MUST BE PROPERLY MAINTAINED AND THE STRICTEST PRECAUTION MUST BE TAKEN TO AVOID AND MINIMIZE THE TRANSPORT OF SEDIMENTS TO PONDS, RIVERS, STREAMS, GRASS SWALES, AND OTHER WETLAND AREAS THROUGHOUT ALL PHASES OF CONSTRUCTION. CONTROLS ARE TO BE INSPECTED WEEKLY AND IMMEDIATELY FOLLOWING PRECIPITATION EVENTS RESULTING IN RAINFALLS OF .01"
- EROSION AND SEDIMENTATION CONTROLS ARE TO REMAIN IN PLACE UNTIL ALL SOILS HAVE STABILIZED AND SHALL BE REMOVED ONLY UPON AUTHORIZATION FROM RIDEM, THE ENGINEER, AND/OR THE GOLF COURSE SUPERINTENDENT.
- SEE POND-EXPANSION NOTES BELOW FOR TURBIDITY CONTROL DURING POND EXPANSION.
- SEE NOTES AND DETAILS ON SHEETS II & IS FOR SEDIMENTATION AND TURBIDITY CONTROL DURING RIVER RESTORATION AT EXISTING HOLES 4 AND 5.

**POND-EXPANSION NOTES**

- POND-EXPANSION ACTIVITIES (EXISTING FAIRWAYS 3, 8, AND 15) ARE TO OCCUR ONLY BETWEEN JULY 1 AND OCTOBER 15 OF ANY CALENDAR YEAR. ALL WORK ASSOCIATED WITH POND EXPANSION MUST BE COMPLETED BY OCTOBER 15.
- UNDERWATER SURVEYS OF POND DEPTHS HAVE NOT BEEN PERFORMED. CONTRACTOR IS TO MATCH EXISTING POND DEPTH WHEN EXCAVATING FOR POND EXPANSIONS. POND SIDE SLOPES ARE TO BE GRADED AT APPROXIMATELY A 3:1 SLOPE FROM THE WATER SURFACE TO THE POND BOTTOM.
- POND SIDE SLOPES LOCATED ABOVE THE WATERLINE ARE TO BE LOAMED (6" DEEP), SEEDED, AND MULCHED WITH LOOSE HAY OR STRAW IMMEDIATELY FOLLOWING FINAL GRADING. THE SEED MIX MAY BE EITHER A CONSERVATION MIX OR A GOLF COURSE MIX, AS PER DIRECTION BY THE GOLF COURSE SUPERINTENDENT. LOAMING AND SEEDING OF POND SIDE SLOPES MUST BE COMPLETED BY OCTOBER 15. A LINE OF STAKED HAY BALES SHALL BE INSTALLED 3' UPLAND OF THE TOP OF THE SIDE SLOPES IMMEDIATELY FOLLOWING LOAMING AND/OR SEEDING.
- TURBIDITY CURTAINS SHALL BE INSTALLED PRIOR TO POND EXCAVATION AT THE LOCATIONS SHOWN FOR EACH OF THE THREE PONDS. THE CURTAIN SHALL BE SILDAM TURBIDITY BARRIER FROM BROCKTON EQUIPMENT/SPILLDAM, INC. PO BOX 3214, BROCKTON, MA, 02404, (508) 583-1850, OR EQUIVALENT. IT MUST HAVE A FLOATING BOOM, SKIRT, AND CHAIN BALLAST TO CONFORM WITH THE POND BOTTOM.
- THE TURBIDITY CURTAIN SHALL BE INSTALLED FIVE FEET OFF EXCAVATION LIMITS AND SHALL BE SECURELY ANCHORED TO POND BANKS AT EITHER END TO ACHIEVE FULL CONTAINMENT. THE CURTAIN SHALL REMAIN IN PLACE THROUGHOUT THE DURATION OF POND-EXPANSION ACTIVITIES. ACCUMULATED SEDIMENTS SHALL BE REMOVED PRIOR TO REMOVING THE CURTAIN, AND THE CURTAIN MUST REMAIN IN PLACE AT LEAST 12 HOURS AFTER EXCAVATION AND SEDIMENT-REMOVAL ACTIVITIES TO ALLOW SUFFICIENT SETTLING TIME.
- ALL EXCAVATED MATERIAL IS TO BE PLACED IN THE DESIGNATED DENATURING BASINS AND ALLOWED TO DRAIN A MINIMUM OF 12 HOURS PRIOR TO REMOVAL & TRANSPORT. ALL EXCAVATED MATERIAL IS TO BE HAULED OFF SITE TO AN AUTHORIZED, NON-WETLAND DISPOSAL SITE OR RESPONSIBLY REUSED ON SITE ONLY AS PART OF THE ACTIVITIES PROPOSED UNDER THIS APPLICATION.
- CONTRACTOR IS TO REVIEW POND EXCAVATION METHODOLOGY WITH ENGINEER PRIOR TO COMMENCEMENT AND IS TO SUBMIT SPECIFICATIONS FOR TURBIDITY CURTAIN TO ENGINEER FOR APPROVAL PRIOR TO PURCHASE.
- DENATURING BASIN CONFIGURATIONS SHOWN ON PLAN ARE SOMEWHAT SCHEMATIC. ANY CHANGE IN SHAPE AND/OR LOCATION IS TO BE SUBMITTED TO ENGINEER FOR APPROVAL PRIOR TO INSTALLATION.

**UTILITY NOTES**

- UTILITIES TYPICALLY HAVE NOT BEEN DEPICTED IN THIS PLAN SET. THE CONTRACTOR MUST CONSULT WITH THE GOLF COURSE SUPERINTENDENT PRIOR TO THE COMMENCEMENT OF WORK TO REVIEW THE LOCATIONS OF UNDERGROUND UTILITIES. SUBSURFACE UTILITIES LOCATED WITHIN COURSE LIMITS INCLUDE BUT ARE NOT LIMITED TO IRRIGATION LINES, SPRINKLER HEADS AND VALVES, ELECTRICAL CONDUITS/WIRES, AND DATA-COMMUNICATION LINES. THE CONTRACTOR ASSUMES ALL RESPONSIBILITY FOR UTILITY DAMAGE WHILE EXECUTING THE PROPOSED IMPROVEMENTS.
- CONTRACTOR ASSUMES RESPONSIBILITY FOR CONTACTING DIG SAFE PRIOR TO EARTHWORK COMMENCEMENT.

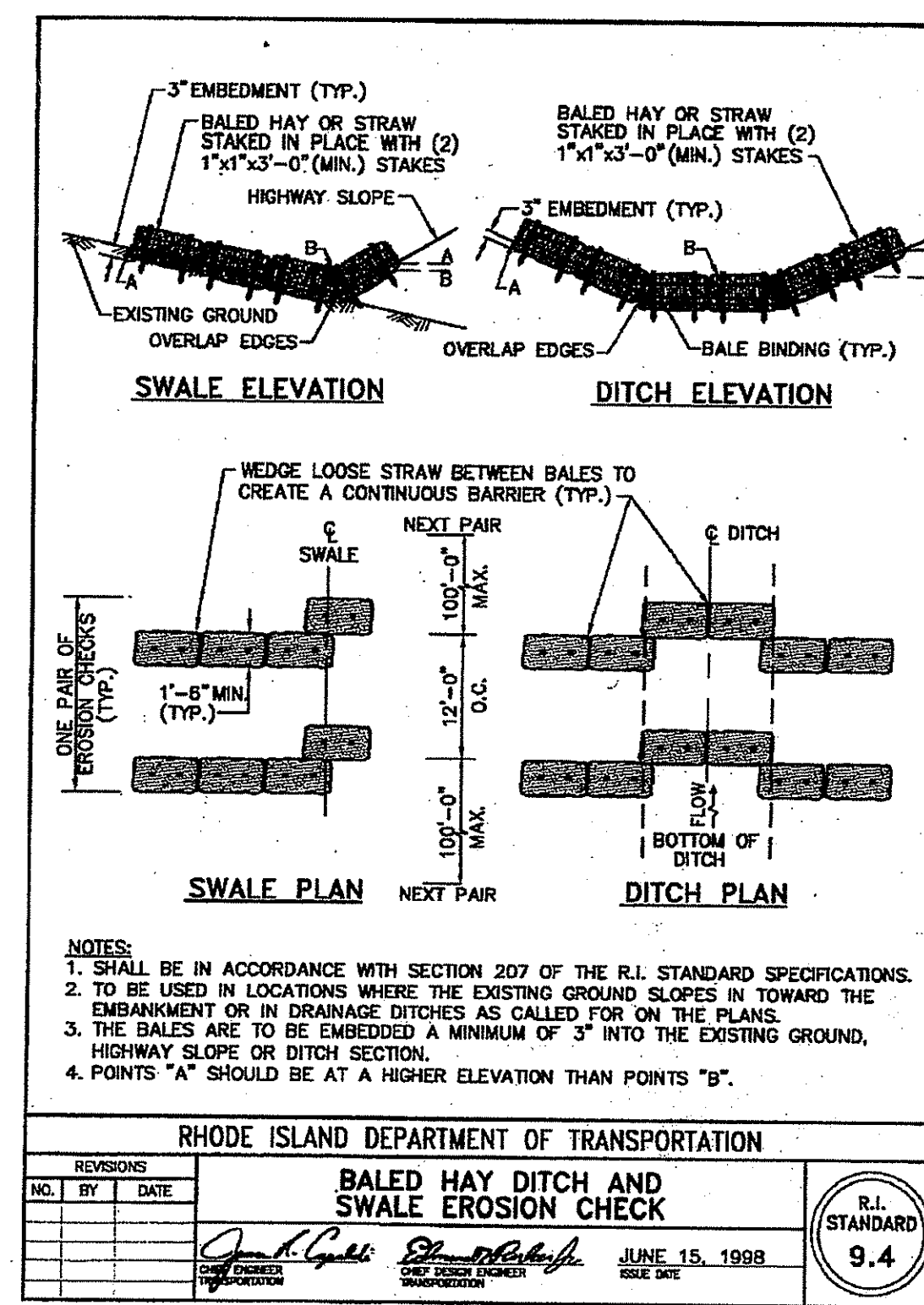
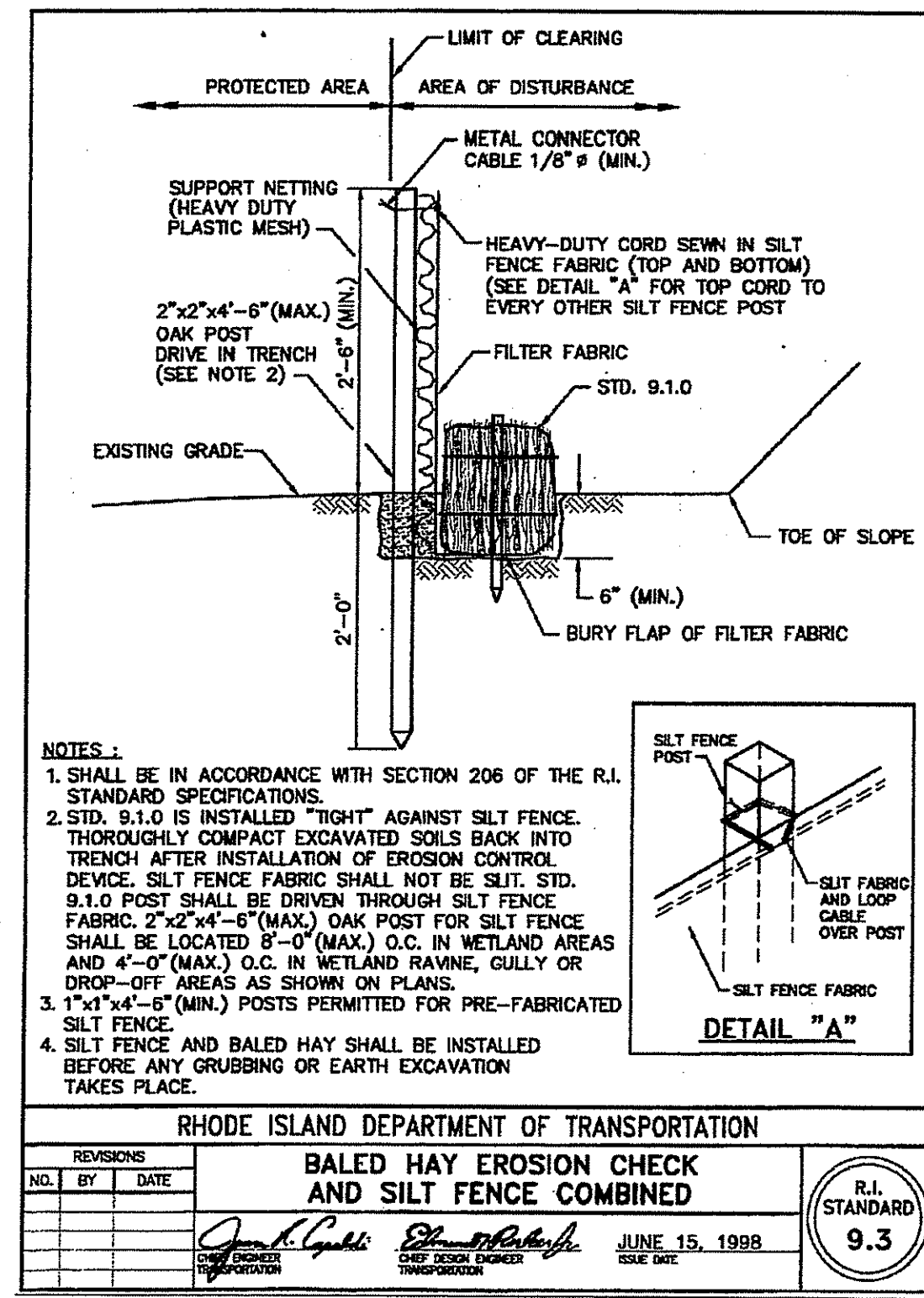
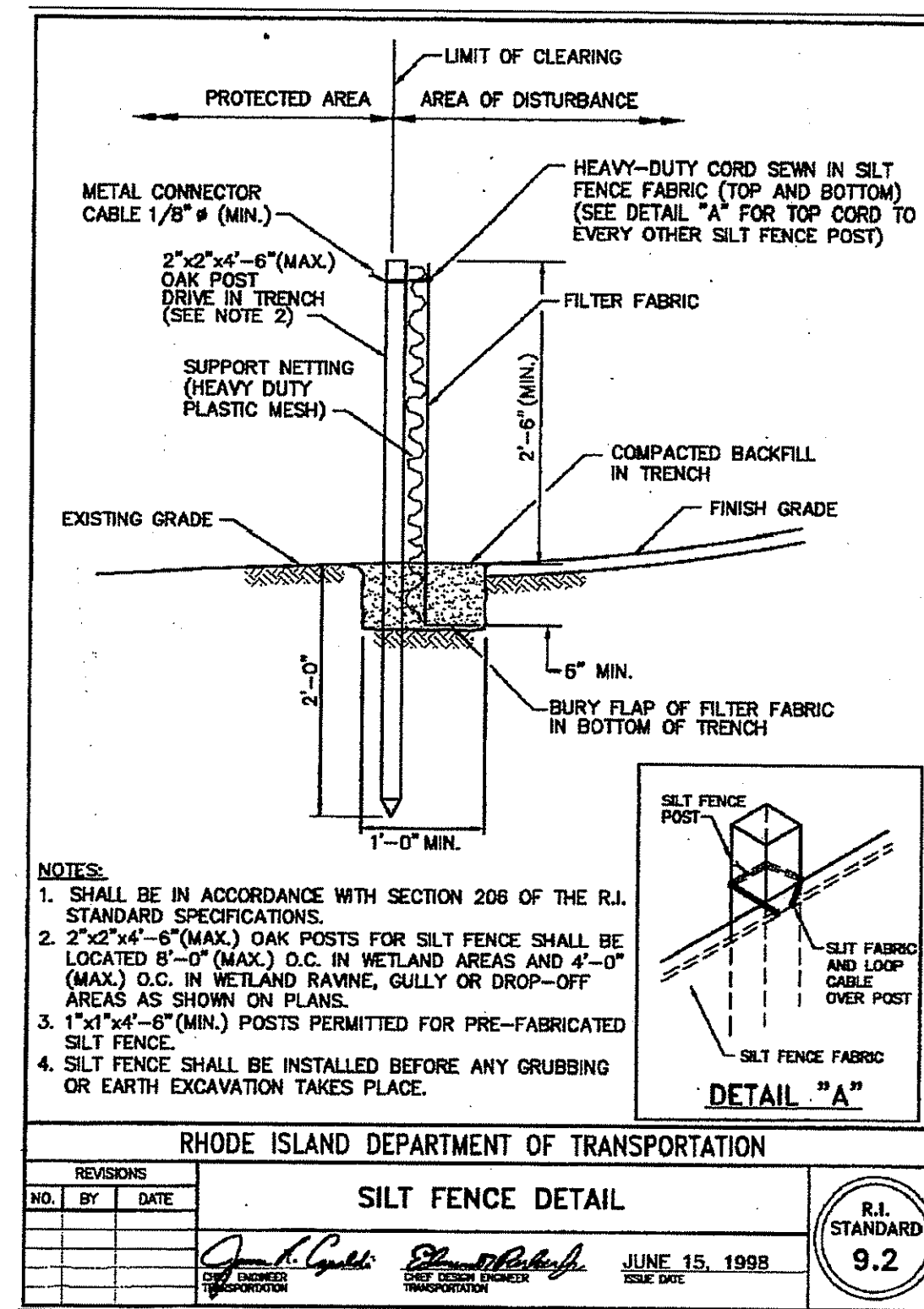
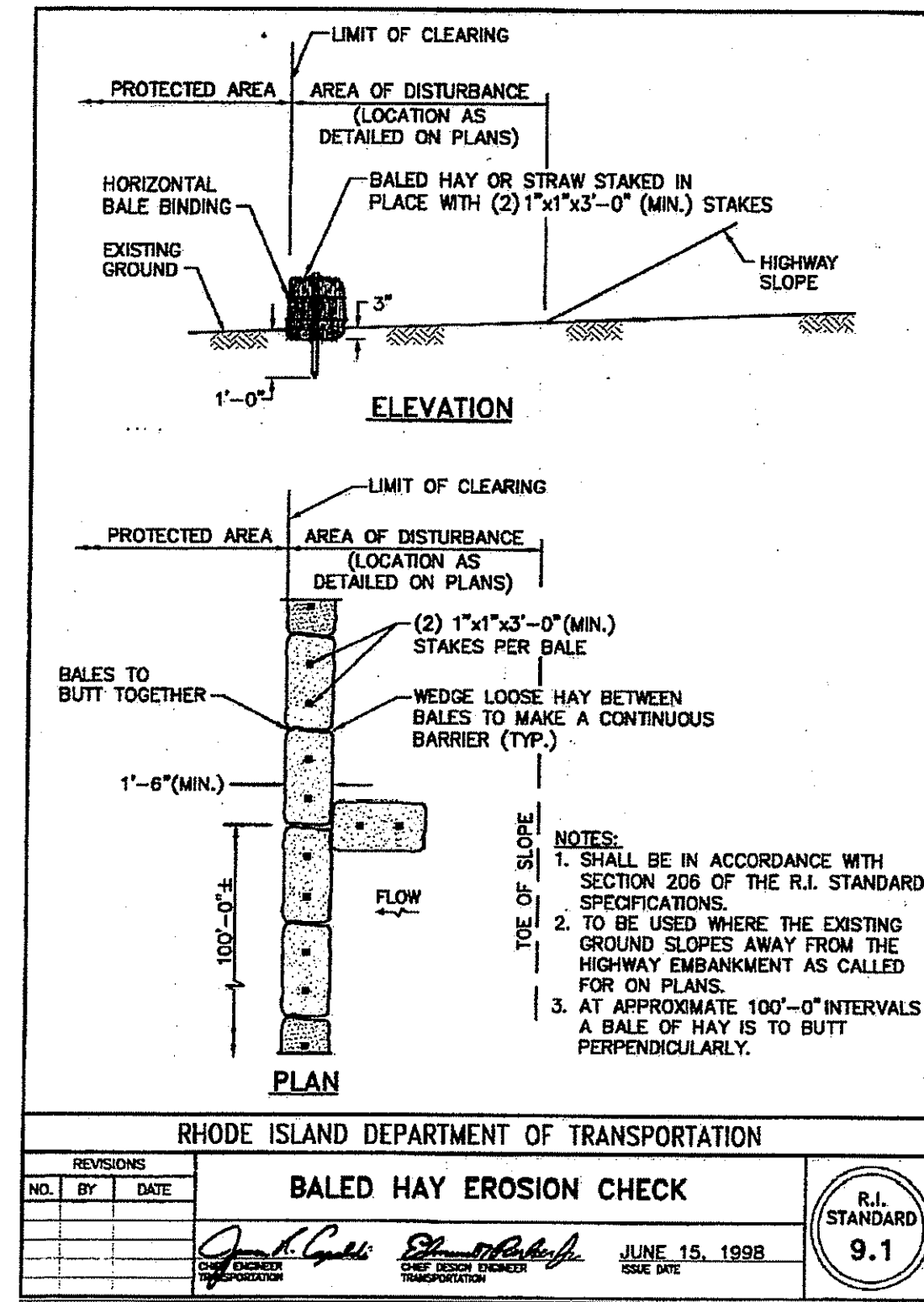
**TREE CLEARING AND TREE RELOCATION NOTES**

- TREE CLEARING NEAR WETLANDS SHALL OCCUR SUCH THAT TREES ARE FELLED IN A DIRECTION AWAY FROM OPEN WATER, IE, AWAY FROM PONDS, INTERMITTENT STREAMS, AND RIVERS.
- ALL BRUSH AND SLASH IS TO BE REMOVED AND PROPERLY DISPOSED OF IN AN APPROPRIATE, NON-WETLAND DISPOSAL SITE EITHER ON OR OFF-SITE AT THE DISCRETION OF THE GOLF COURSE SUPERINTENDENT. DISPOSAL OF ANY BRUSH IN WETLANDS IS PROHIBITED. IF SLASH IS TO BE CHIPPED, THE CHIPS MAY BE RE-SPREAD IN EXISTING MULCH BEDS AT THE DISCRETION OF THE GOLF COURSE SUPERINTENDENT, BUT AT NO TIME SHALL CHIPS BE DIRECTED INTO, OR DEPOSITED IN, WETLANDS.
- TREES LOCATED WITHIN THE LIMITS OF PROPOSED CONTOURING ARE TO BE REMOVED UNLESS SPECIFIED OTHERWISE.
- TREES SPECIFIED FOR RELOCATION HAVE BEEN IDENTIFIED FOR THEIR POTENTIAL TRANSPLANTING QUALITIES BASED ON SIZE AND CONDITION. THEY MAY EITHER BE TRANSPLANTED OR REMOVED AS PROJECT NEEDS WARRANT AND PER DIRECTION OF THE GOLF COURSE SUPERINTENDENT.

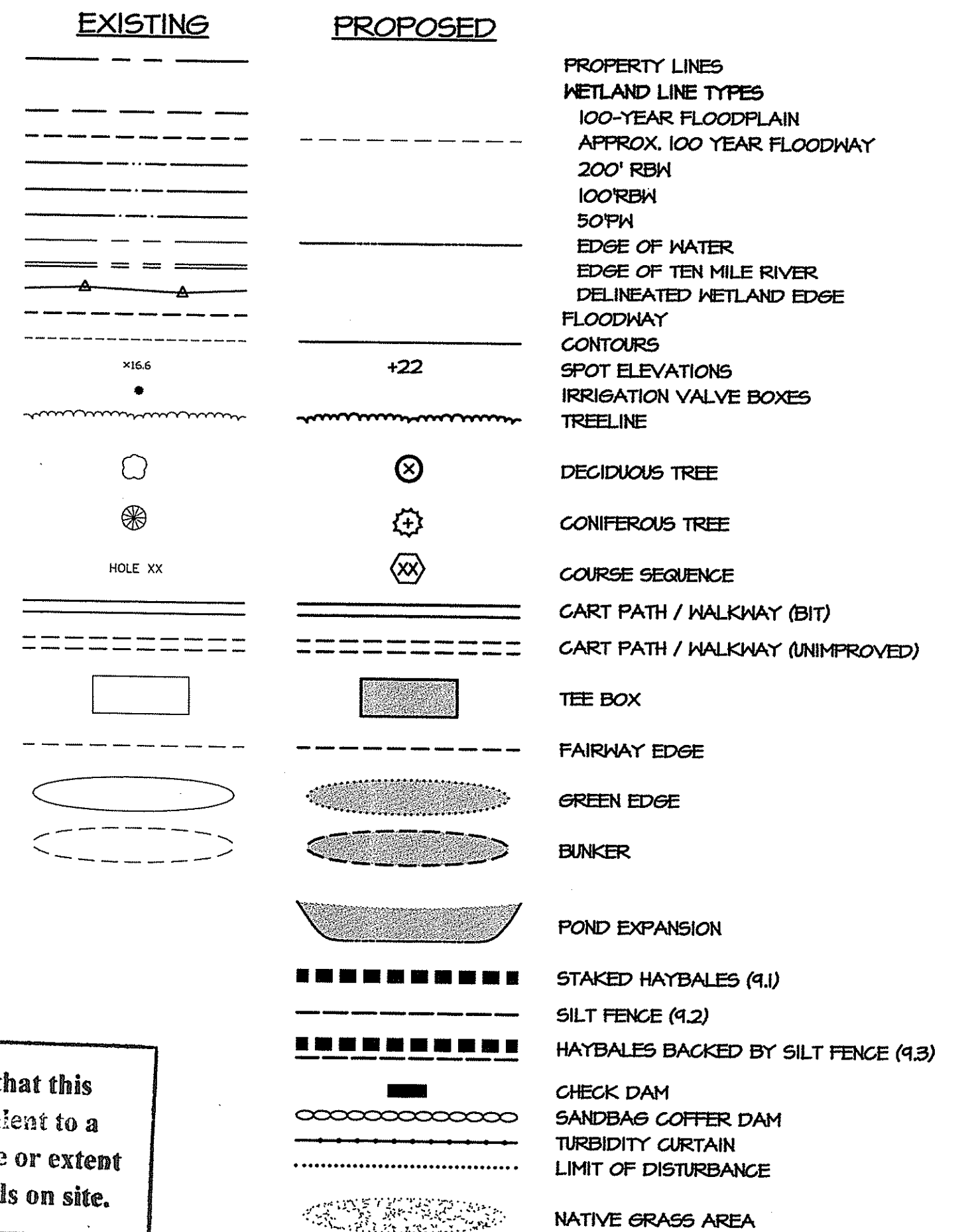
**MISCELLANEOUS VEGETATION NOTES**

- AREAS DESIGNATED AS NATIVE GRASS AREAS ARE TO REMAIN IN A NATURALIZED STATE WITHOUT INTENSIVE TURF MANAGEMENT TREATMENTS. THEY ARE TO BE PLANTED WITH NATIVE GRASS SPECIES AND MOWED ON A ROTATION OF THICE ANNUALLY, OR AS CONDITIONS WARRANT TO RETAIN TALL-GRASS CONDITIONS WHILE CONTROLLING WOODY GROWTH.

**EROSION AND SEDIMENTATION CONTROL DETAILS**



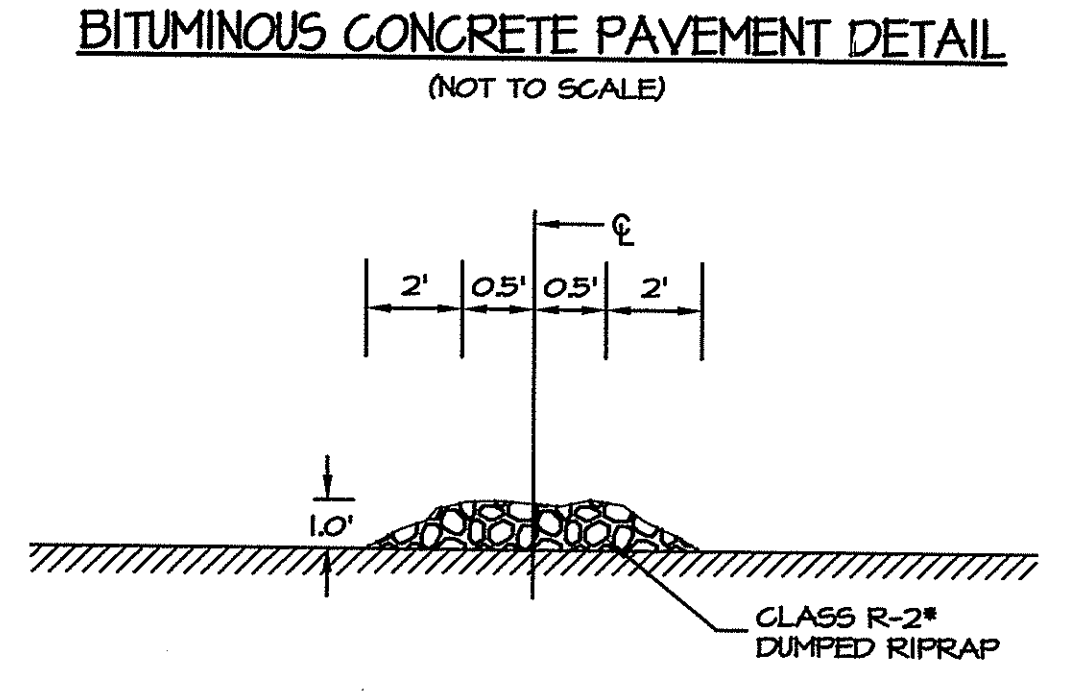
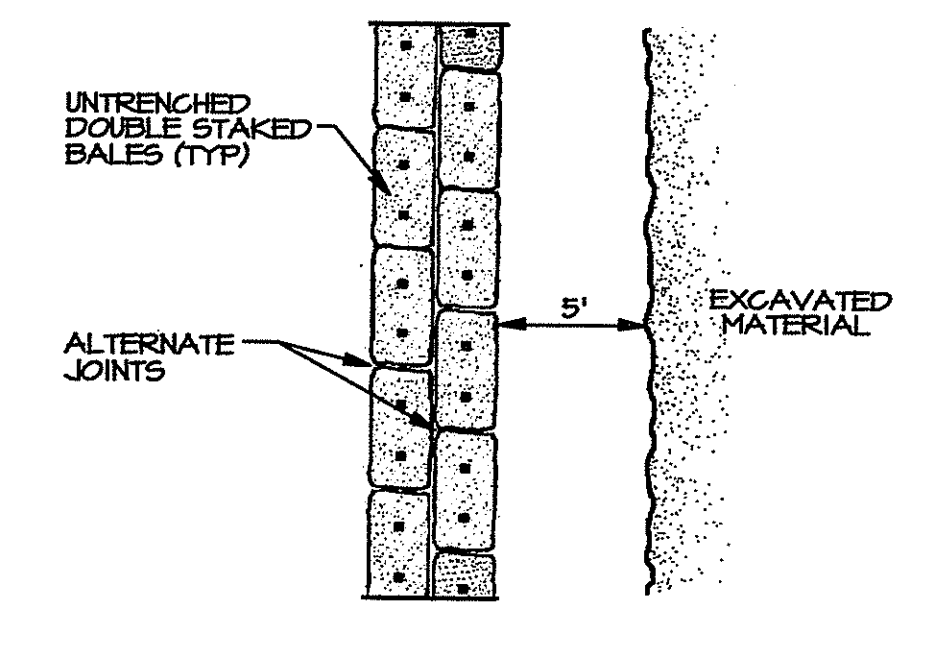
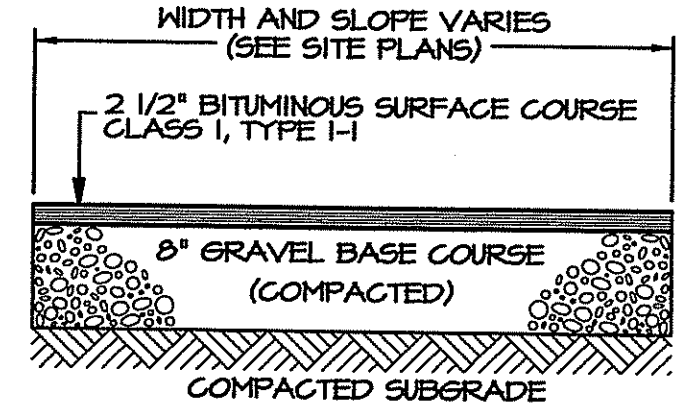
**LEGEND**



Kindly be advised that this Permit is not equivalent to a verification of the type or extent of freshwater wetlands on site.

DEPARTMENT OF ENVIRONMENTAL MANAGEMENT  
OFFICE OF WATER RESOURCES  
FRESHWATER WETLANDS PROGRAM  
APPROVED WITH CONDITIONS  
AS SPECIFIED IN THE LETTER OF APPROVAL  
DATED MAY 05 2004 FILE # 03-2544  
NO CHANGES ALLOWED WITHOUT PRIOR APPROVAL.  
APPROVED PLANS MUST BE AT CONSTRUCTION SITE

*W. Joseph Casey*



\* MODIFIED NATIONAL STONE ASSOC. NUMBER

MAR 18 2004

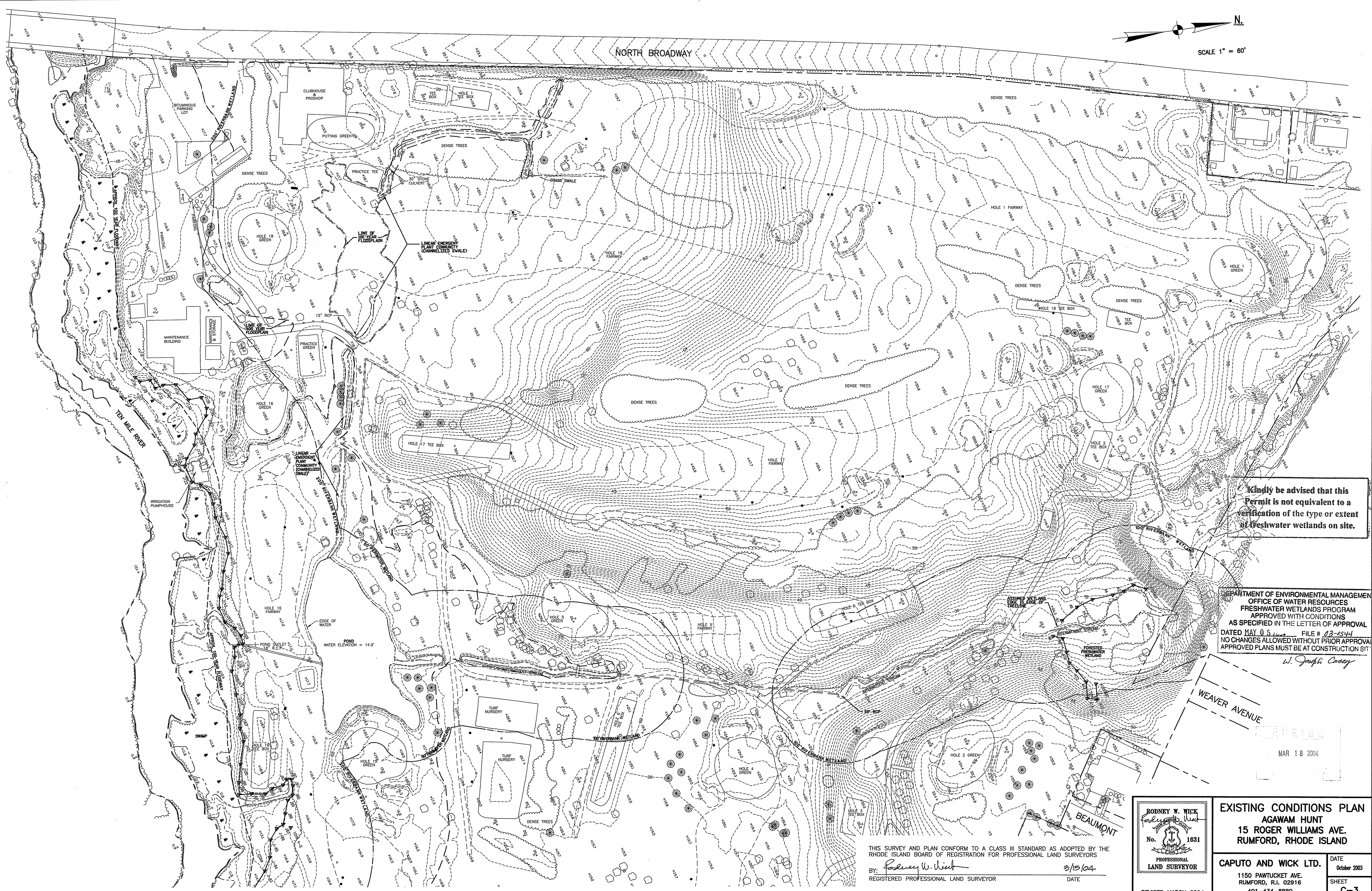
**RODNEY W. WICK**  
Professional Engineer  
No. 3376

**NOTES, DETAILS AND LEGEND**  
AGAWAM HUNT  
15 ROGER WILLIAMS AVE.  
RUMFORD, RHODE ISLAND

**CAPUTO AND WICK LTD.** DATE: October 2003  
1150 PAWTUCKET AVE. SHEET: C-2  
RUMFORD, R.I. 02916  
401-434-8880

REVISED MARCH 2004

NORTH BROADWAY



Kindly be advised that this Permit is not equivalent to a verification of the type or extent of freshwater wetlands on site.

DEPARTMENT OF ENVIRONMENTAL MANAGEMENT  
OFFICE OF WATER RESOURCES  
FRESHWATER WETLANDS PROGRAM  
APPROVED WITH CONDITIONS  
AS SPECIFIED IN THE LETTER OF APPROVAL  
DATED MAY 05 2004 FILE # 03-6544  
NO CHANGES ALLOWED WITHOUT PRIOR APPROVAL  
APPROVED PLANS MUST BE AT CONSTRUCTION SITE

*W. Joseph Casey*

WEAVER AVENUE

MAR 18 2004

THIS SURVEY AND PLAN CONFORM TO A CLASS III STANDARD AS ADOPTED BY THE RHODE ISLAND BOARD OF REGISTRATION FOR PROFESSIONAL LAND SURVEYORS  
BY: *Rodney W. Wick* 3/15/04  
REGISTERED PROFESSIONAL LAND SURVEYOR DATE

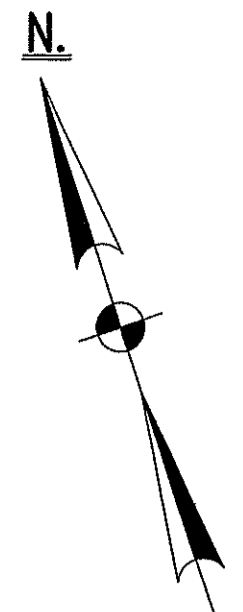
RODNEY W. WICK  
*Rodney W. Wick*  
No. 1631  
PROFESSIONAL  
LAND SURVEYOR

EXISTING CONDITIONS PLAN  
AGAWAM HUNT  
15 ROGER WILLIAMS AVE.  
RUMFORD, RHODE ISLAND

CAPUTO AND WICK LTD. DATE  
1150 PAWTUCKET AVE. October 2003  
RUMFORD, R.I. 02916 SHEET  
401-434-8880 C-3

REVISED MARCH 2004

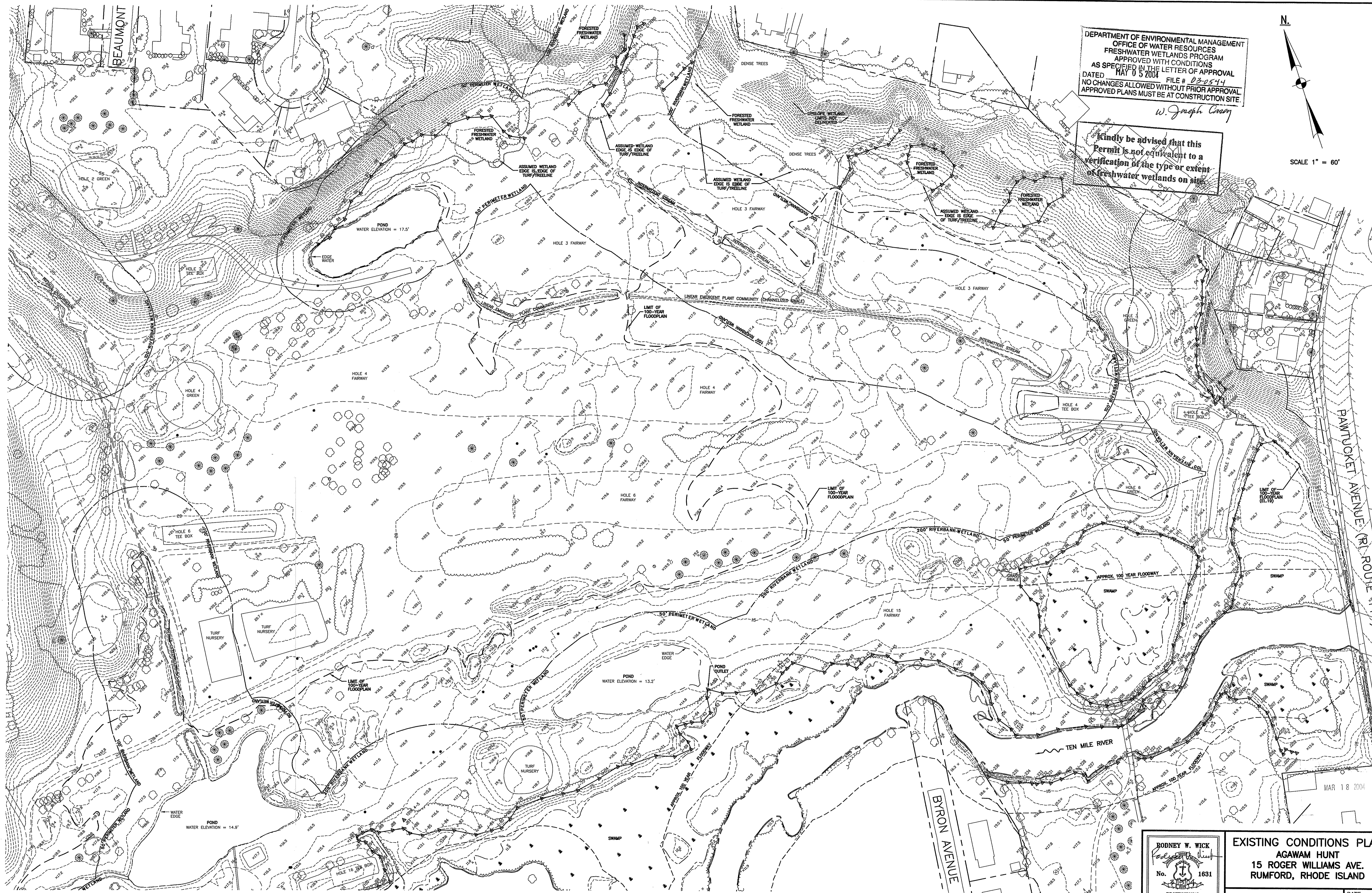
DEPARTMENT OF ENVIRONMENTAL MANAGEMENT  
 OFFICE OF WATER RESOURCES  
 FRESHWATER WETLANDS PROGRAM  
 APPROVED WITH CONDITIONS  
 AS SPECIFIED IN THE LETTER OF APPROVAL  
 DATED MAY 05 2004 FILE # 03-0544  
 NO CHANGES ALLOWED WITHOUT PRIOR APPROVAL  
 APPROVED PLANS MUST BE AT CONSTRUCTION SITE.



SCALE 1" = 60'

Kindly be advised that this  
 Permit is not equivalent to a  
 verification of the type or extent  
 of freshwater wetlands on site.

*W. Joseph Cray*



RODNEY W. WICK  
 No. 1831  
 PROFESSIONAL  
 LAND SURVEYOR

EXISTING CONDITIONS PLAN  
 AGAWAM HUNT  
 15 ROGER WILLIAMS AVE.  
 RUMFORD, RHODE ISLAND

CAPUTO AND WICK LTD.  
 1150 PAWTUCKET AVE.  
 RUMFORD, R.I. 02916  
 401-434-8880

REVISED MARCH 2004

DATE  
 October 2003  
 SHEET  
 C-4

N.  
SCALE 1" = 60'

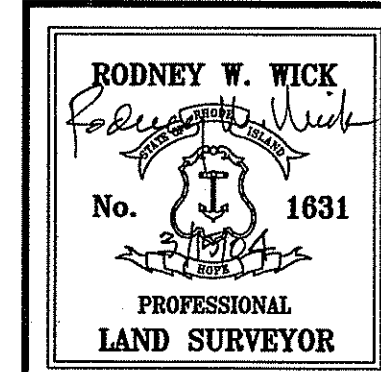


DEPARTMENT OF ENVIRONMENTAL MANAGEMENT  
OFFICE OF WATER RESOURCES  
FRESHWATER WETLANDS PROGRAM  
APPROVED WITH CONDITIONS  
AS SPECIFIED IN THE LETTER OF APPROVAL  
DATED MAY 05 2004 FILE # 23-2544  
NO CHANGES ALLOWED WITHOUT PRIOR APPROVAL.  
APPROVED PLANS MUST BE AT CONSTRUCTION SITE.

*W. Joseph Conroy*

Kindly be advised that this permit is not equivalent to a verification of the type or extent of freshwater wetlands on site.

MAR 18 2004

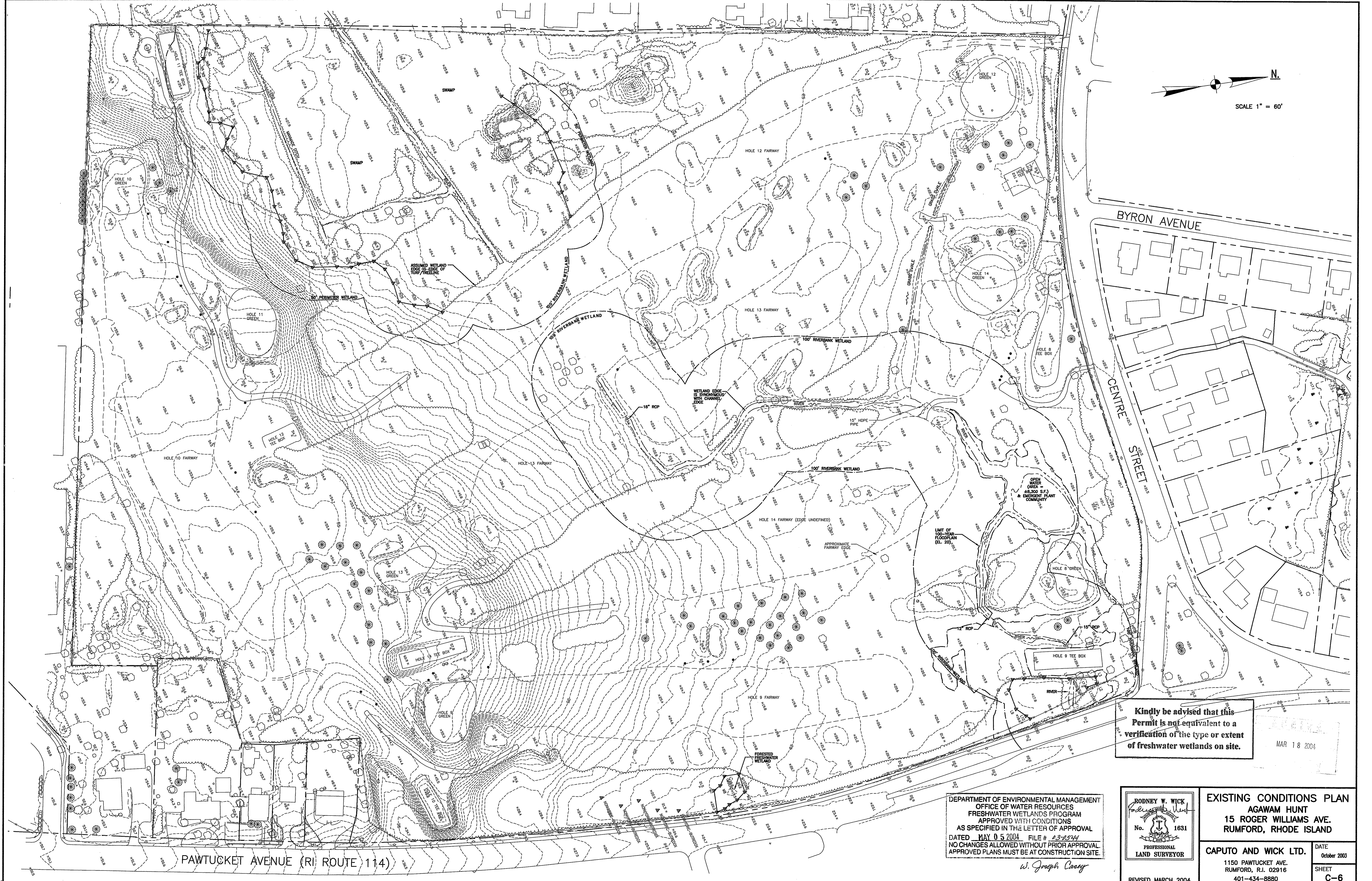


**EXISTING CONDITIONS PLAN**  
**AGAWAM HUNT**  
**15 ROGER WILLIAMS AVE.**  
**RUMFORD, RHODE ISLAND**

**CAPUTO AND WICK LTD.** DATE: October 2003  
1150 PAWTUCKET AVE. SHEET: C-5  
RUMFORD, R.I. 02916  
401-434-8880

REVISED MARCH 2004

N.  
SCALE 1" = 60'



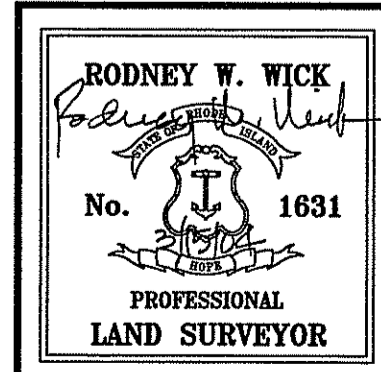
Kindly be advised that this Permit is not equivalent to a verification of the type or extent of freshwater wetlands on site.

MAR 18 2004

PAWTUCKET AVENUE (RI ROUTE 114)

DEPARTMENT OF ENVIRONMENTAL MANAGEMENT  
OFFICE OF WATER RESOURCES  
FRESHWATER WETLANDS PROGRAM  
APPROVED WITH CONDITIONS  
AS SPECIFIED IN THE LETTER OF APPROVAL  
DATED MAY 05 2004 FILE # 23-7534  
NO CHANGES ALLOWED WITHOUT PRIOR APPROVAL  
APPROVED PLANS MUST BE AT CONSTRUCTION SITE.

*W. Joseph Casey*



REVISED MARCH 2004

EXISTING CONDITIONS PLAN  
AGAWAM HUNT  
15 ROGER WILLIAMS AVE.  
RUMFORD, RHODE ISLAND

CAPUTO AND WICK LTD.

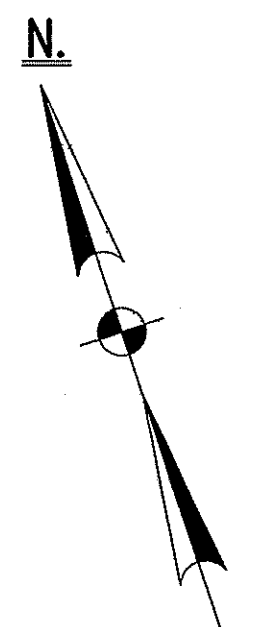
1150 PAWTUCKET AVE.  
RUMFORD, R.I. 02916  
401-434-8880

DATE  
October 2003

SHEET  
C-6

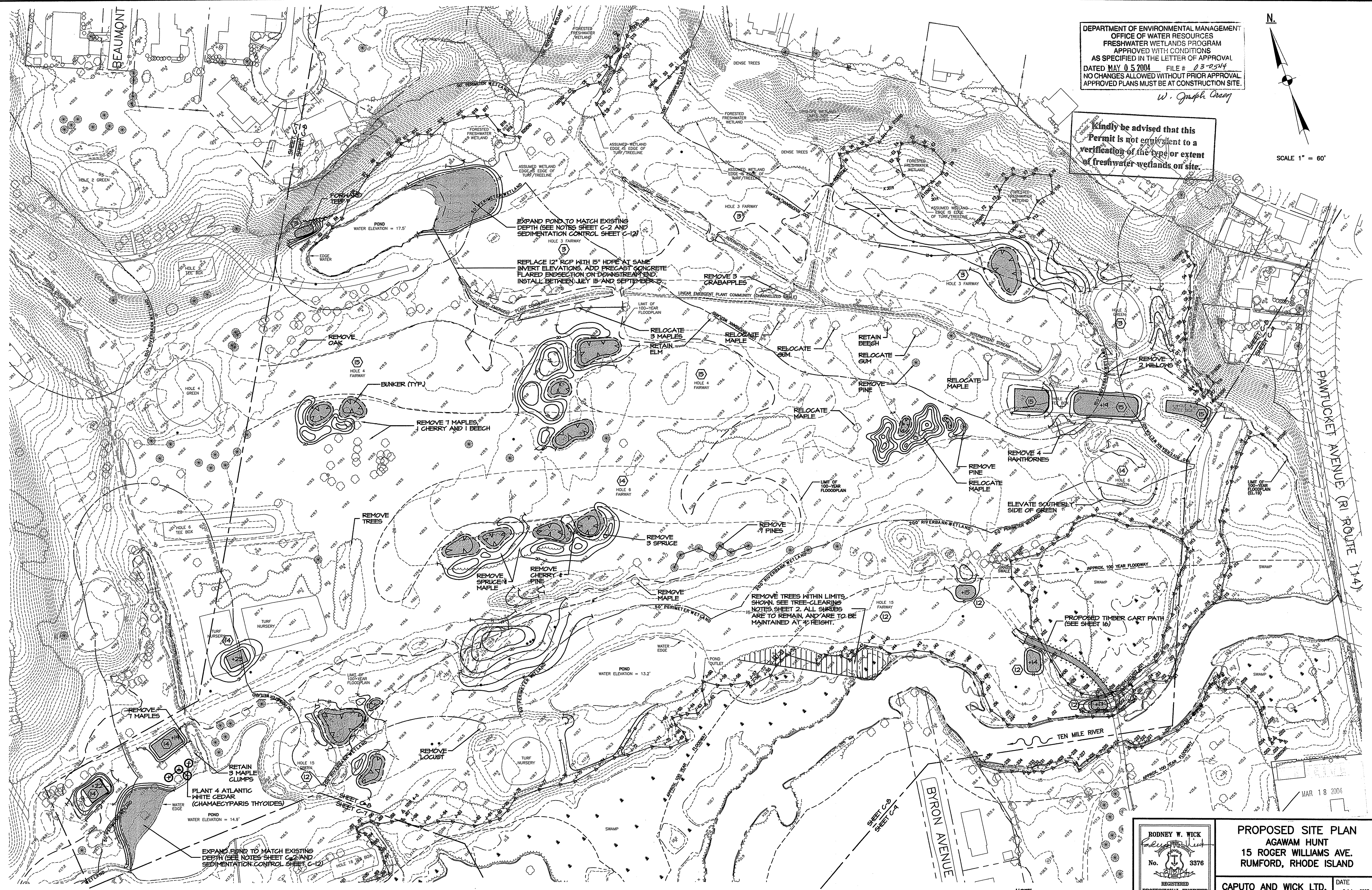


DEPARTMENT OF ENVIRONMENTAL MANAGEMENT  
 OFFICE OF WATER RESOURCES  
 FRESHWATER WETLANDS PROGRAM  
 APPROVED WITH CONDITIONS  
 AS SPECIFIED IN THE LETTER OF APPROVAL  
 DATED MAY 0 5 2004 FILE # 03-0544  
 NO CHANGES ALLOWED WITHOUT PRIOR APPROVAL  
 APPROVED PLANS MUST BE AT CONSTRUCTION SITE.



SCALE 1" = 60'

Kindly be advised that this Permit is not equivalent to a verification of the type or extent of freshwater wetlands on site.



EXPAND POND TO MATCH EXISTING DEPTH (SEE NOTES SHEET C-2 AND SEDIMENTATION CONTROL SHEET C-12)

EXPAND POND TO MATCH EXISTING DEPTH (SEE NOTES SHEET C-2 AND SEDIMENTATION CONTROL SHEET C-12)

REPLACE 12" RCP WITH 15" HDPE AT SAME INVERT ELEVATIONS. ADD PRECAST CONCRETE FLARED ENDSECTION ON DOWNSTREAM END. INSTALL BETWEEN JULY 15 AND SEPTEMBER 15.

REMOVE TREES WITHIN LIMITS SHOWN. SEE TREE-CLEARING NOTES SHEET 2. ALL SHRUBS ARE TO REMAIN, AND ARE TO BE MAINTAINED AT 4' HEIGHT.

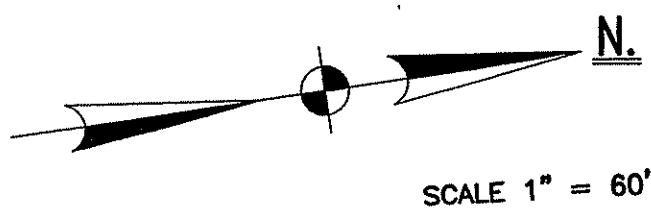
NOTE:  
 (C) INDICATES NEW TREE FAIRWAY AND HOLE NUMBER

RODNEY W. WICK  
 No. 3376  
 REGISTERED PROFESSIONAL ENGINEER  
 REVISED MARCH 2004

PROPOSED SITE PLAN  
 AGAWAM HUNT  
 15 ROGER WILLIAMS AVE.  
 RUMFORD, RHODE ISLAND

CAPUTO AND WICK LTD.  
 1150 PAWTUCKET AVE.  
 RUMFORD, R.I. 02916  
 401-434-8880

DATE  
 October 2003  
 SHEET  
 C-8



CONSTRUCTION ACCESS POINT FOR HOLE 4 ONLY (TO BE COORDINATED WITH GOLF COURSE SUPERINTENDANT)

BYRON AVENUE

PRISCILLA AVENUE

CENTRE STREET

PAWTUCKET AVENUE (R.I. ROUTE 114)

Kindly be advised that this Permit is not equivalent to a verification of the type or extent of freshwater wetlands on site.

DEPARTMENT OF ENVIRONMENTAL MANAGEMENT  
OFFICE OF WATER RESOURCES  
FRESHWATER WETLANDS PROGRAM  
APPROVED WITH CONDITIONS  
AS SPECIFIED IN THE LETTER OF APPROVAL  
DATED MAY 15 2004 FILE # 03-0544  
NO CHANGES ALLOWED WITHOUT PRIOR APPROVAL.  
APPROVED PLANS MUST BE AT CONSTRUCTION SITE.

*W. Joseph Conroy*

MAR 18 2004

NOTE:  
⊙ INDICATES NEW TEE, FAIRWAY AND HOLE NUMBER

RODNEY W. WICK  
*Rodney W. Wick*  
No. 3376  
REGISTERED PROFESSIONAL ENGINEER

PROPOSED SITE PLAN  
AGAWAM HUNT  
15 ROGER WILLIAMS AVE.  
RUMFORD, RHODE ISLAND

CAPUTO AND WICK LTD.

1150 PAWTUCKET AVE.  
RUMFORD, R.I. 02916  
401-434-8880

DATE  
October 2003  
SHEET  
C-9

REVISED MARCH 2004

N  
SCALE 1" = 60'

PRIMARY CONSTRUCTION POINT (COORDINATE WITH GOLF COURSE SUPERINTENDANT)  
INSTALL 15" HDPE WITH (2) PRECAST CONCRETE FLARED END SECTIONS. SLOPE TO DRAIN.  
REMOVE TOPSOIL AT EXISTING SHALE AND INSTALL CLEAN COMPACTED GRANULAR FILL AROUND AND ABOVE PIPE. FINISH SURFACE WITH 6" LOAM AND SEED.

SECONDARY CONSTRUCTION ACCESS POINT FOR LIGHT-DUTY EQUIPMENT (COORDINATE WITH GOLF COURSE SUPERINTENDANT)

Kindly be advised that this Permit is not equivalent to a verification of the type or extent of freshwater wetlands on site.

MAR 18 2004

NOTE:  
⊙ INDICATES NEW TEE, FAIRWAY AND HOLE NUMBER

DEPARTMENT OF ENVIRONMENTAL MANAGEMENT  
OFFICE OF WATER RESOURCES  
FRESHWATER WETLANDS PROGRAM  
APPROVED WITH CONDITIONS  
AS SPECIFIED IN THE LETTER OF APPROVAL  
DATED MAY 05 2004 FILE # 02-544  
NO CHANGES ALLOWED WITHOUT PRIOR APPROVAL  
APPROVED PLANS MUST BE AT CONSTRUCTION SITE.

*W. Joseph Casey*

RODNEY W. WICK  
No. 3376  
REGISTERED PROFESSIONAL ENGINEER

PROPOSED SITE PLAN  
AGAWAM HUNT  
15 ROGER WILLIAMS AVE.  
RUMFORD, RHODE ISLAND

CAPUTO AND WICK LTD.

1150 PAWTUCKET AVE.  
RUMFORD, R.I. 02916  
401-434-8880

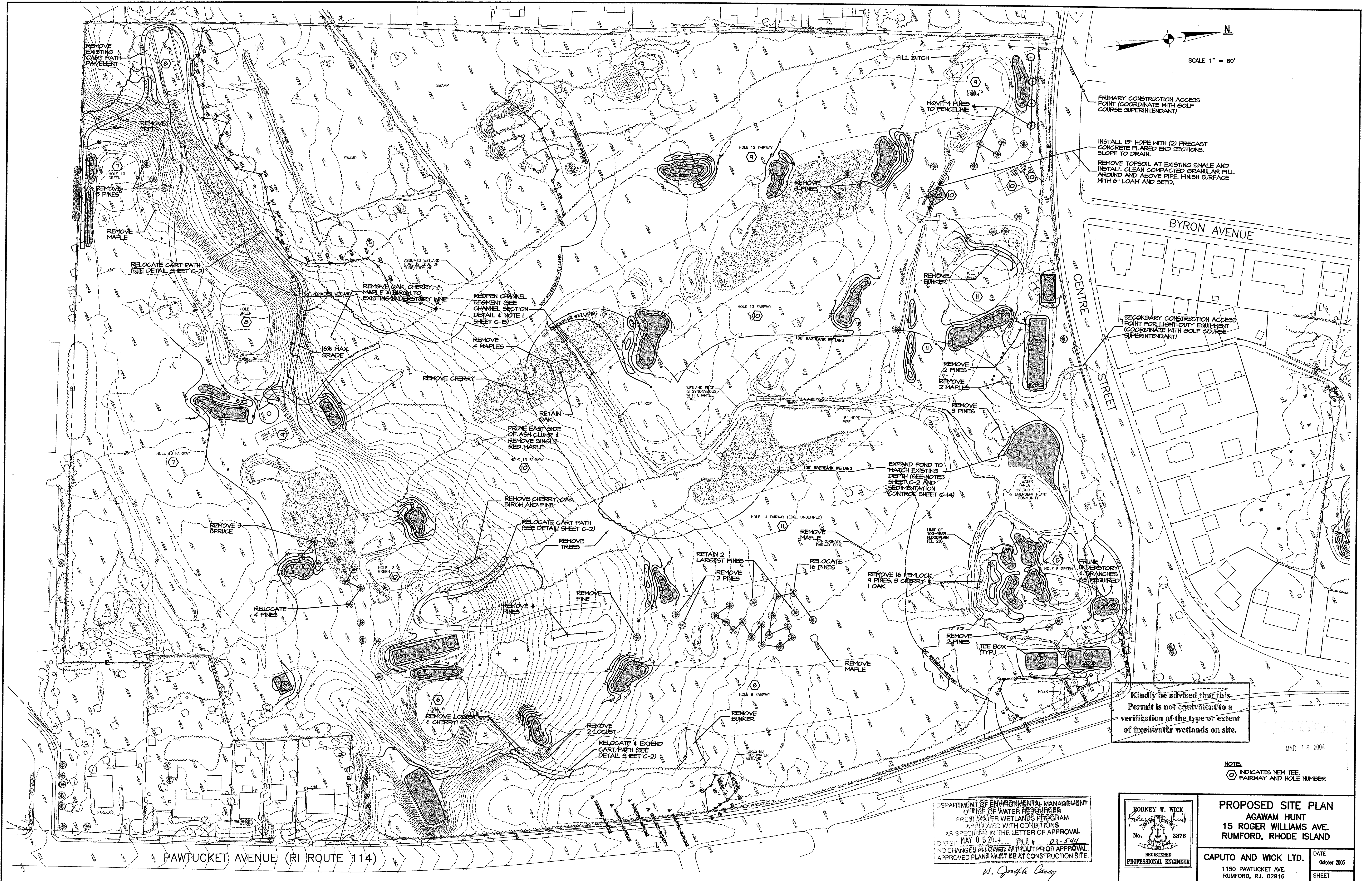
DATE  
October 2003

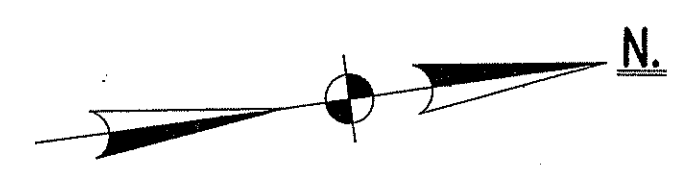
SHEET  
C-10

PAWTUCKET AVENUE (RI ROUTE 114)

BYRON AVENUE

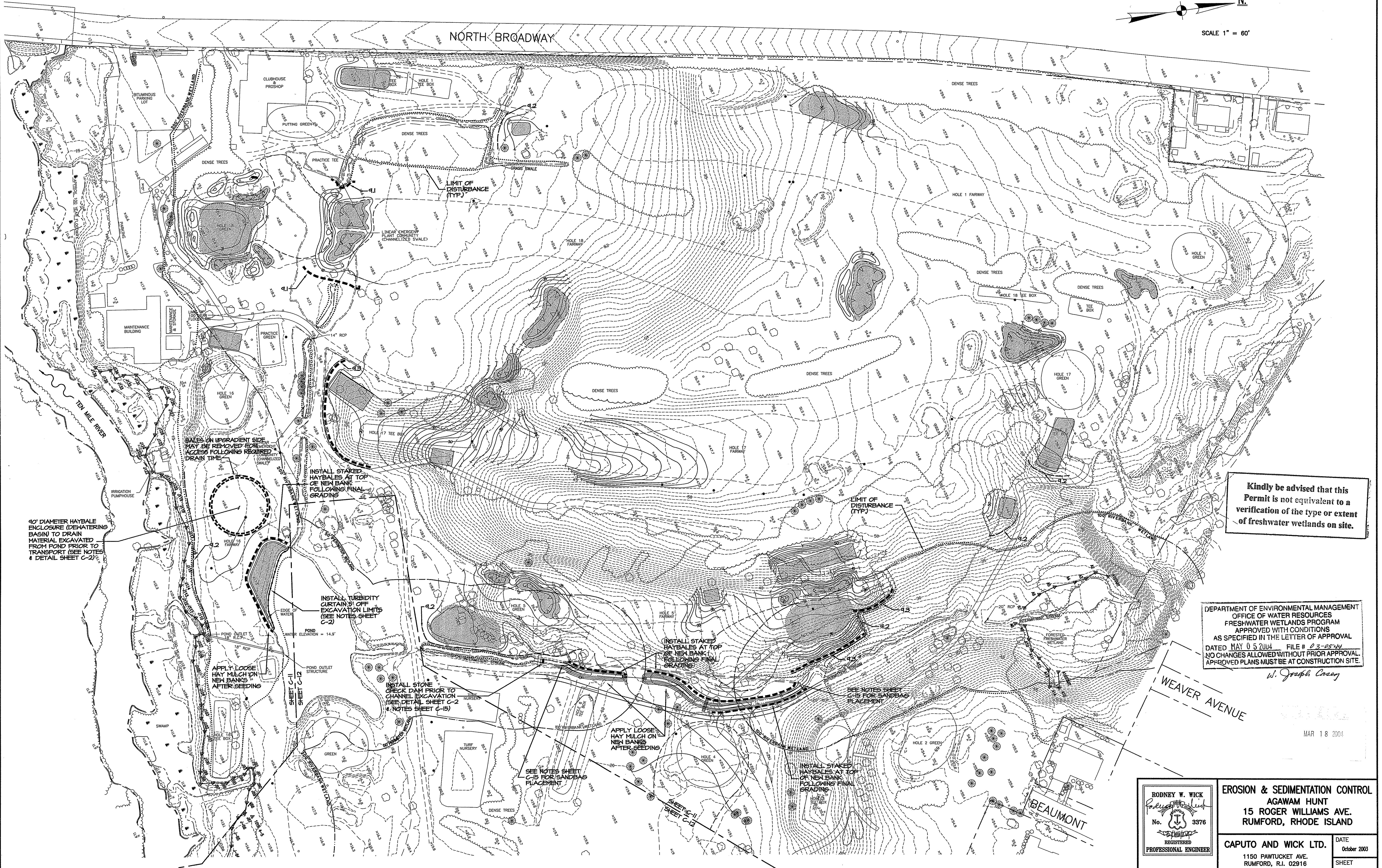
CENTRE STREET





SCALE 1" = 60'

NORTH BROADWAY



Kindly be advised that this Permit is not equivalent to a verification of the type or extent of freshwater wetlands on site.

DEPARTMENT OF ENVIRONMENTAL MANAGEMENT  
OFFICE OF WATER RESOURCES  
FRESHWATER WETLANDS PROGRAM  
APPROVED WITH CONDITIONS  
AS SPECIFIED IN THE LETTER OF APPROVAL  
DATED MAY 05 2004 FILE # 23-05-44  
NO CHANGES ALLOWED WITHOUT PRIOR APPROVAL.  
APPROVED PLANS MUST BE AT CONSTRUCTION SITE.

*W. Joseph Casey*

WEAVER AVENUE

MAR 18 2004

RODNEY W. WICK  
*Rodney W. Wick*  
No. 3376  
REGISTERED PROFESSIONAL ENGINEER

EROSION & SEDIMENTATION CONTROL  
AGAWAM HUNT  
15 ROGER WILLIAMS AVE.  
RUMFORD, RHODE ISLAND

CAPUTO AND WICK LTD.  
1150 PAWTUCKET AVE.  
RUMFORD, R.I. 02916  
401-434-8880

DATE  
October 2003  
SHEET  
C-11

REVISED MARCH 2004

90' DIAMETER HAYBALE ENCLOSURE (DEWATERING BASIN) TO DRAIN MATERIAL EXCAVATED FROM POND PRIOR TO TRANSPORT (SEE NOTES & DETAIL SHEET C-2)

HALES ON UPGRADIENT SIDE MAY BE REMOVED FOR ACCESS FOLLOWING REQUIRED DRAIN TIME

INSTALL STAKED HAYBALES AT TOP OF NEW BANK FOLLOWING FINAL GRADING

INSTALL TURBIDITY CURTAIN 3' OFF EXCAVATION LIMITS (SEE NOTES SHEET C-2)

APPLY LOOSE HAY MULCH ON NEW BANKS AFTER SEEDING

INSTALL STONE CHECK DAM PRIOR TO CHANNEL EXCAVATION (SEE DETAIL SHEET C-2 & NOTES SHEET C-15)

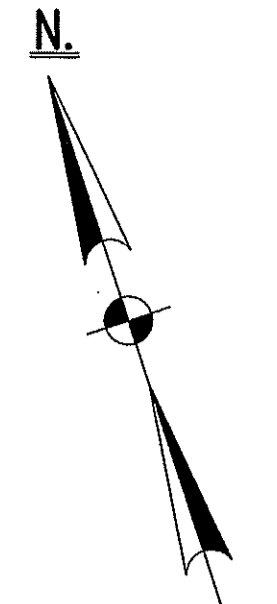
APPLY LOOSE HAY MULCH ON NEW BANKS AFTER SEEDING

SEE NOTES SHEET C-15 FOR SANDBAG PLACEMENT

INSTALL STAKED HAYBALES AT TOP OF NEW BANK FOLLOWING FINAL GRADING

SEE NOTES SHEET C-15 FOR SANDBAG PLACEMENT

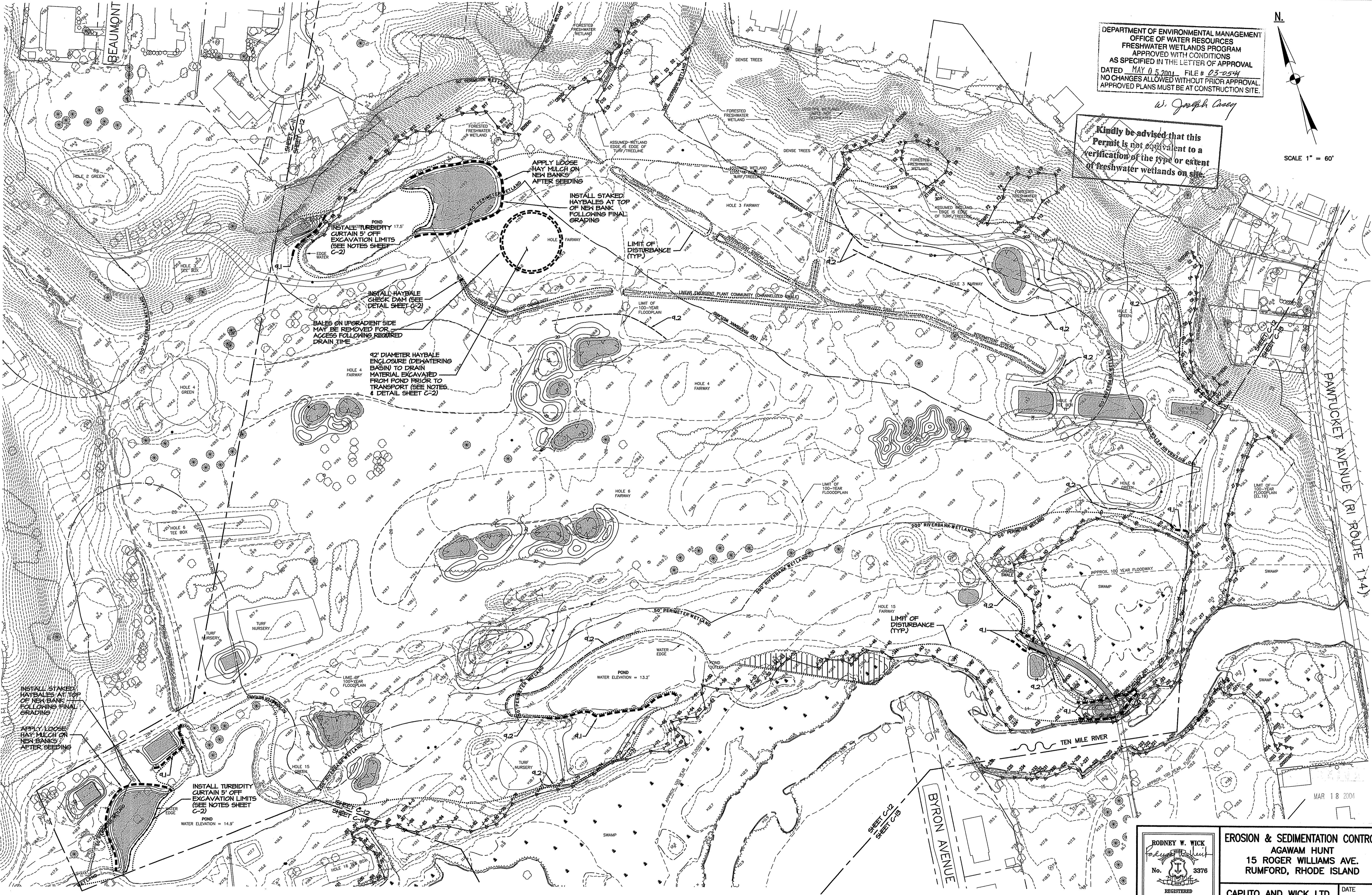
DEPARTMENT OF ENVIRONMENTAL MANAGEMENT  
 OFFICE OF WATER RESOURCES  
 FRESHWATER WETLANDS PROGRAM  
 APPROVED WITH CONDITIONS  
 AS SPECIFIED IN THE LETTER OF APPROVAL  
 DATED MAY 05 2004 FILE # 03-0544  
 NO CHANGES ALLOWED WITHOUT PRIOR APPROVAL  
 APPROVED PLANS MUST BE AT CONSTRUCTION SITE.



SCALE 1" = 60'

Kindly be advised that this Permit is not equivalent to a verification of the type or extent of freshwater wetlands on site.

*W. Joseph Casey*



MAR 18 2004

RODNEY W. WICK  
 No. 3376  
 REGISTERED PROFESSIONAL ENGINEER

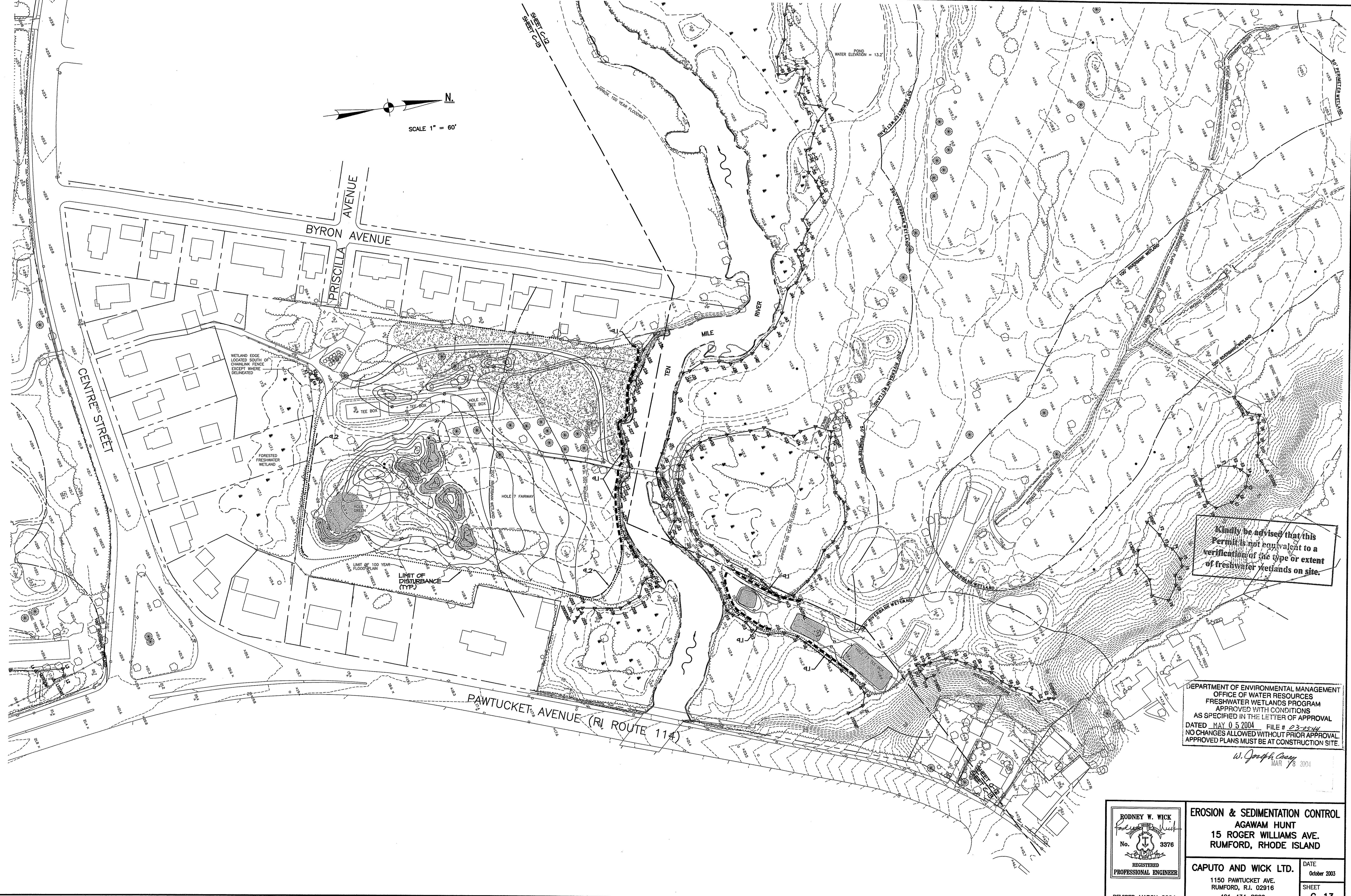
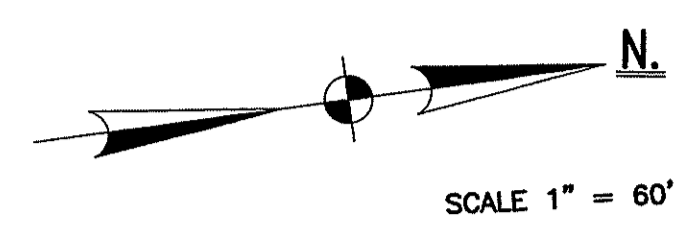
EROSION & SEDIMENTATION CONTROL  
 AGAWAM HUNT  
 15 ROGER WILLIAMS AVE.  
 RUMFORD, RHODE ISLAND

CAPUTO AND WICK LTD.  
 1150 PAWTUCKET AVE.  
 RUMFORD, R.I. 02916  
 401-434-8880

DATE  
 October 2003  
 SHEET  
 C-12

REVISED MARCH 2004

SHEET C-12  
SHEET C-15



Kindly be advised that this Permit is not equivalent to a verification of the type or extent of freshwater wetlands on site.

DEPARTMENT OF ENVIRONMENTAL MANAGEMENT  
OFFICE OF WATER RESOURCES  
FRESHWATER WETLANDS PROGRAM  
APPROVED WITH CONDITIONS  
AS SPECIFIED IN THE LETTER OF APPROVAL  
DATED MAY 0 5 2004 FILE # 03-2544  
NO CHANGES ALLOWED WITHOUT PRIOR APPROVAL.  
APPROVED PLANS MUST BE AT CONSTRUCTION SITE.

*W. Joseph Carey*  
MAR 18 2004

RODNEY W. WICK  
No. 3376  
REGISTERED  
PROFESSIONAL ENGINEER

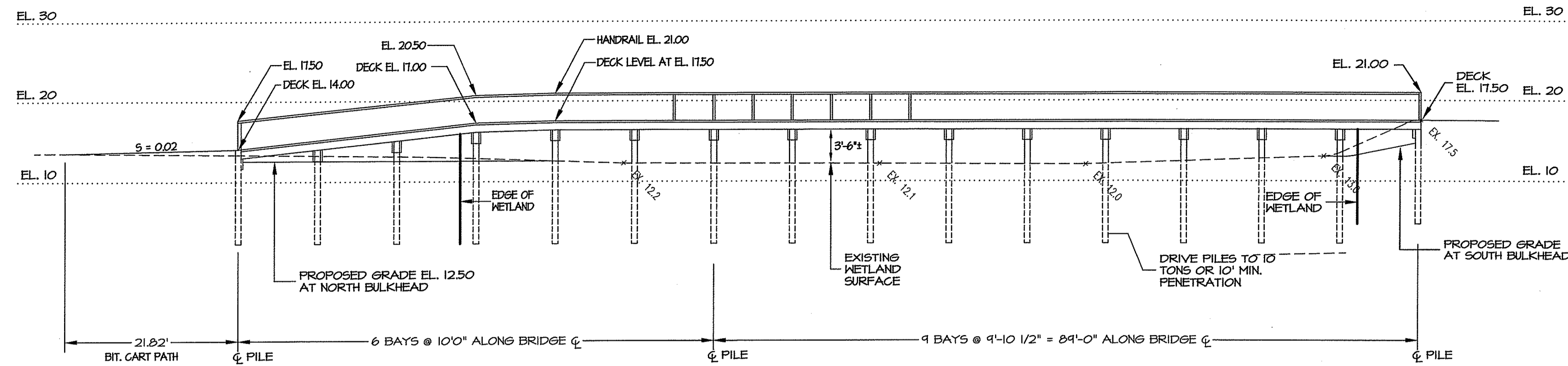
EROSION & SEDIMENTATION CONTROL  
AGAWAM HUNT  
15 ROGER WILLIAMS AVE.  
RUMFORD, RHODE ISLAND

CAPUTO AND WICK LTD. DATE  
1150 PAWTUCKET AVE. October 2003  
RUMFORD, R.I. 02916 SHEET  
401-434-8880 C-13

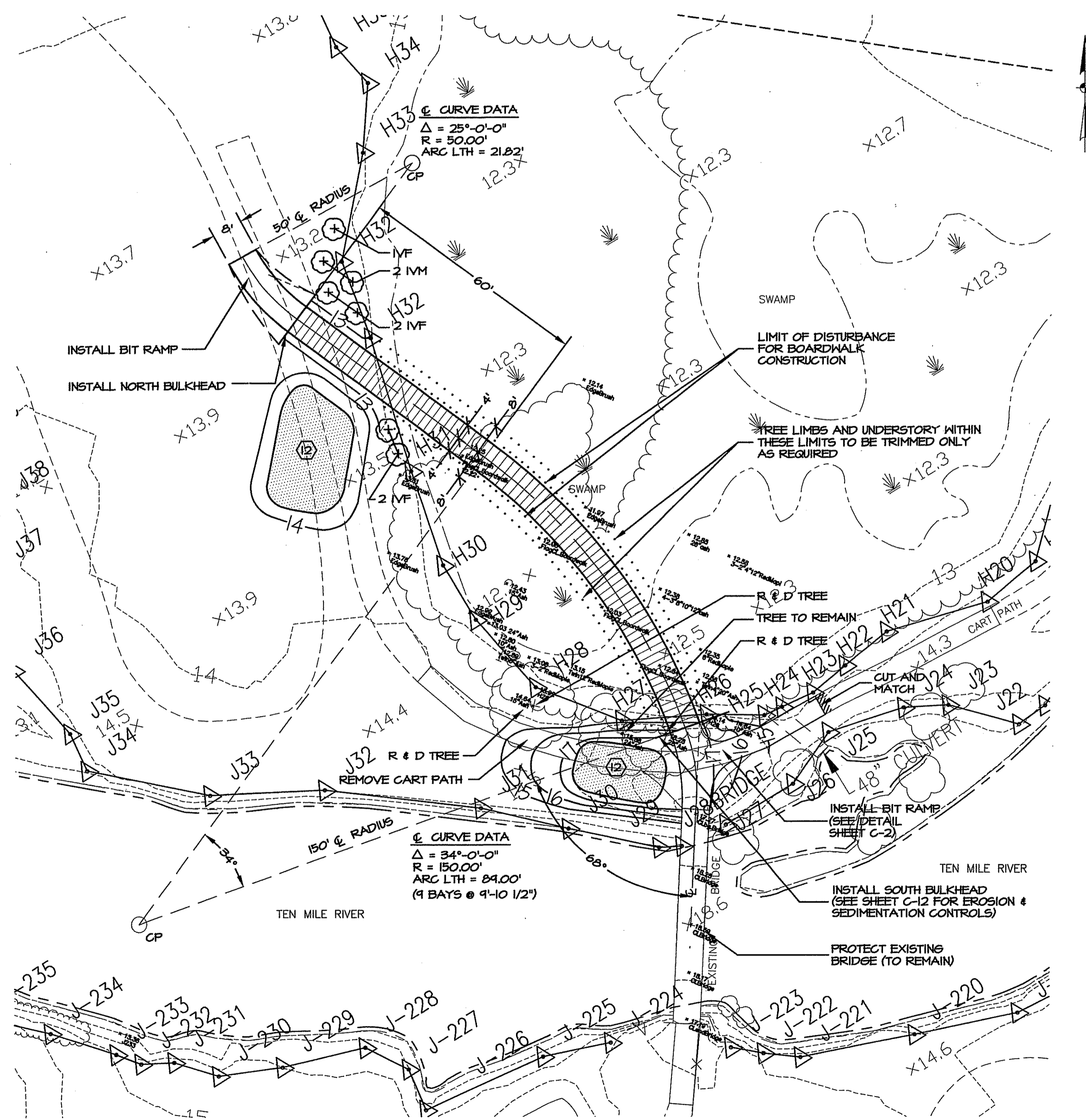
REVISED MARCH 2004







**BRIDGE ELEVATION**  
SCALE 1" = 10'



**BRIDGE PLAN**  
SCALE 1" = 20'

**PLANTING SCHEDULE**

5	IVF	WINTERBERRY (FEMALE)	ILEX VERTICILLATA	4' MIN.	B&B
2	IVM	WINTERBERRY (MALE)	ILEX VERTICILLATA	4' MIN.	B&B

Kindly be advised that this Permit is not equivalent to a verification of the type or extent of freshwater wetlands on site.

DEPARTMENT OF ENVIRONMENTAL MANAGEMENT  
OFFICE OF WATER RESOURCES  
FRESHWATER WETLANDS PROGRAM  
APPROVED WITH CONDITIONS  
AS SPECIFIED IN THE LETTER OF APPROVAL  
DATED MAY 05 2003 FILE # 03-0544  
NO CHANGES ALLOWED WITHOUT PRIOR APPROVAL.  
APPROVED PLANS MUST BE AT CONSTRUCTION SITE.

**NOTES:**

- ALL WORK AND MATERIALS SHALL CONFORM WITH THE PROVISIONS OF THE RIDOT STANDARD SPECIFICATIONS FOR ROAD AND BRIDGE CONSTRUCTION, THE R.I. BUILDING CODE AND APPLICABLE CITY OF EAST PROVIDENCE REGULATIONS OR REQUIREMENTS.
- INSTALL 2 X 12 STRINGERS AS SHOWN EQUALLY SPACED BETWEEN PILES. ACTUAL SPACING WILL VARY DUE TO PILE BUTT DIAMETER HOWEVER DO NOT EXCEED A MAXIMUM OF 16" O.C. SPACED IN THE DIRECTION OF THE DECK BOARDS.
- INSTALL 2 X 12 BLOCKING AT 10' ON CENTER MAXIMUM AND WHERE REQUIRED TO FIRMLY SUPPORT THE ENDS OF DECK BOARDS AT CORNERS, ANGLES OR OTHER CHANGES OF DIRECTION.
- INSTALL KICKERS, BLOCKING, ETC. AT ANGLES TO PROPERLY SUPPORT DECKING AND HANDRAIL SYSTEMS.
- FIELD TREAT JOB SITE FABRICATION CUTS AND HOLES WITH COPPER NAPHTHENATE THAT HAS A MINIMUM OF 2% COPPER METAL IN ACCORDANCE WITH ANPA STANDARD M4.
- ALL DECK BOARDS SHALL BE FULL LENGTH WITHOUT SPLICES OR BUTT CONNECTIONS.
- SEE SHEET C-11 FOR BRIDGE DETAILS

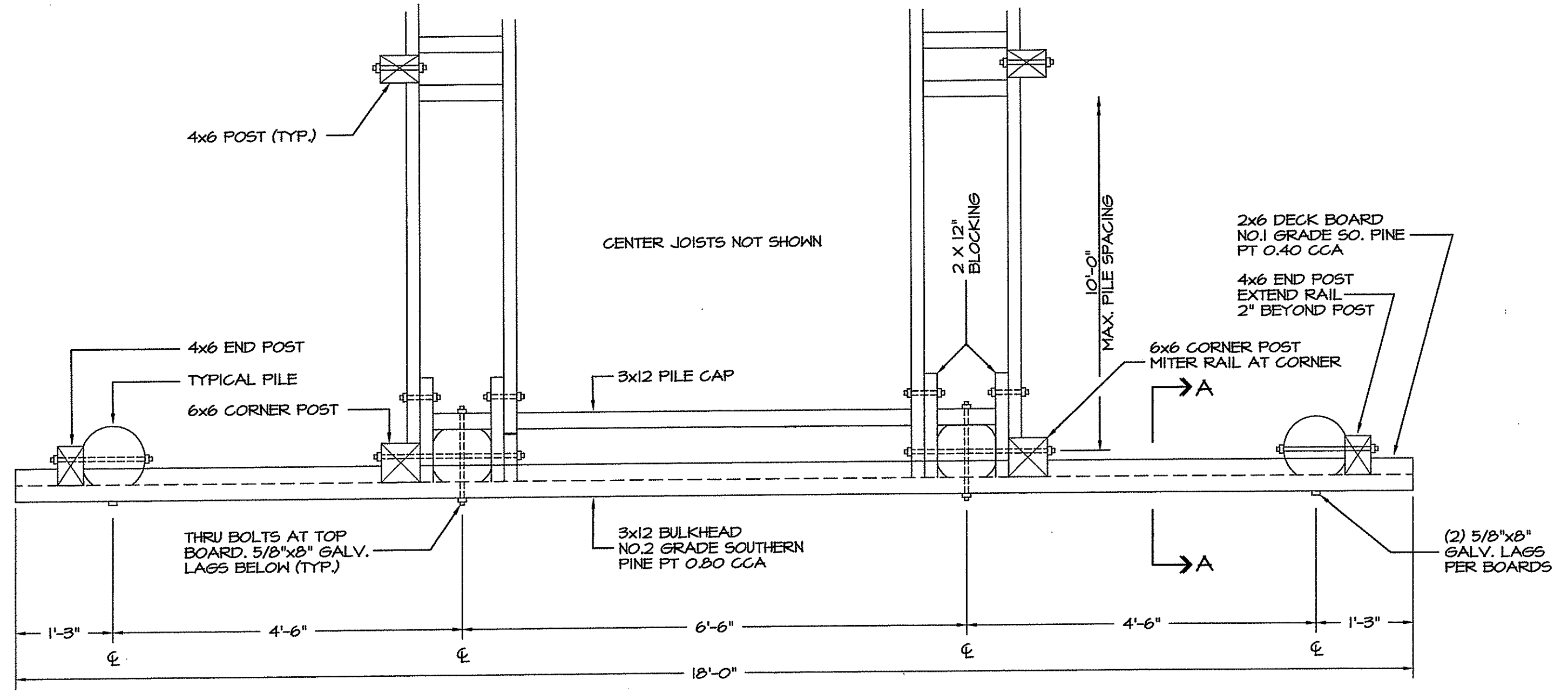
RODNEY W. WICK  
REGISTERED PROFESSIONAL ENGINEER  
No. 3376

**BRIDGE PLAN & DETAILS**  
AGAWAM HUNT  
15 ROGER WILLIAMS AVE.  
RUMFORD, RHODE ISLAND

CAPUTO AND WICK LTD.  
1150 PAWTUCKET AVE.  
RUMFORD, R.I. 02916  
401-434-8880

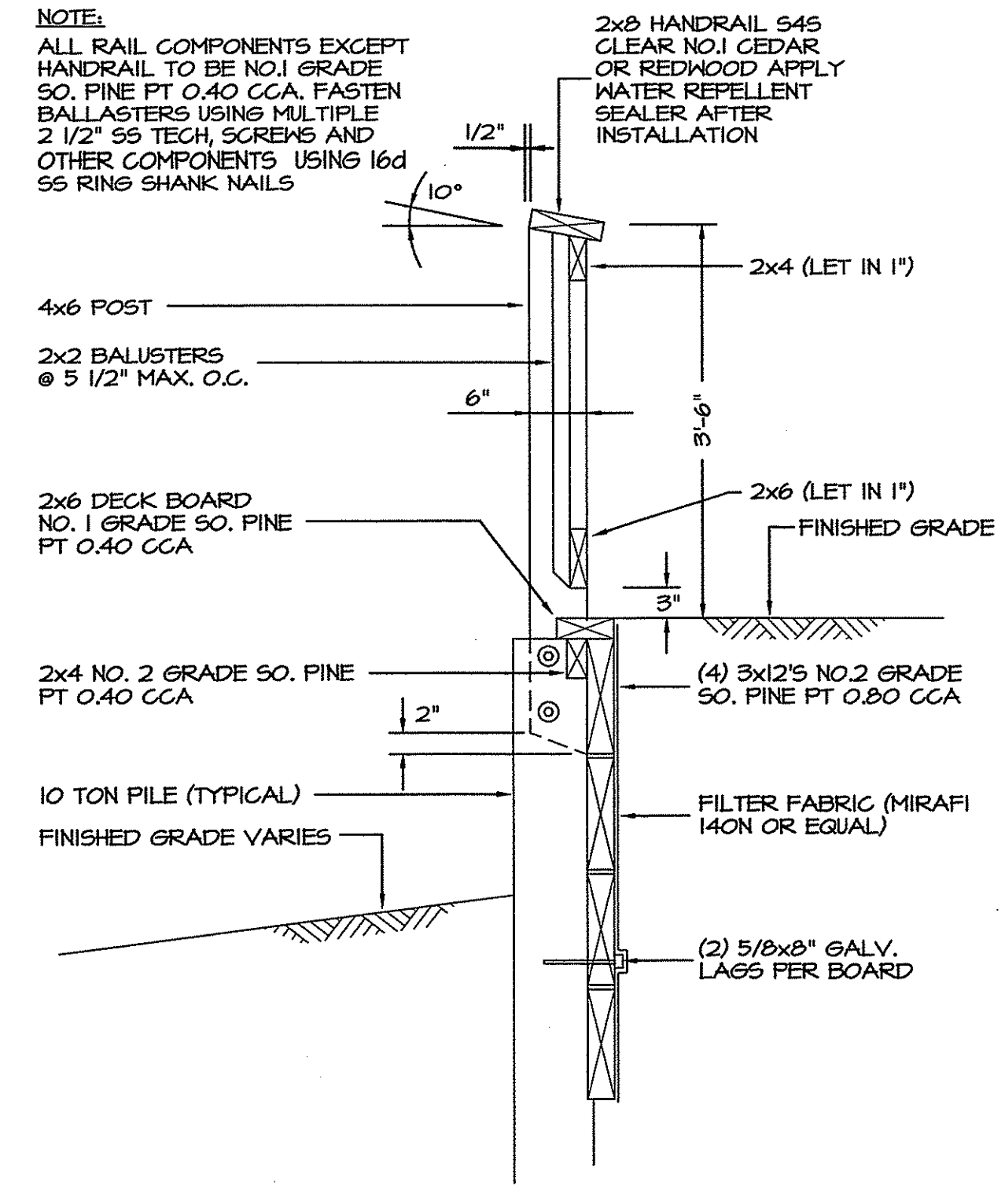
REVISED MARCH 2004

DATE  
October 2003  
SHEET  
C-16

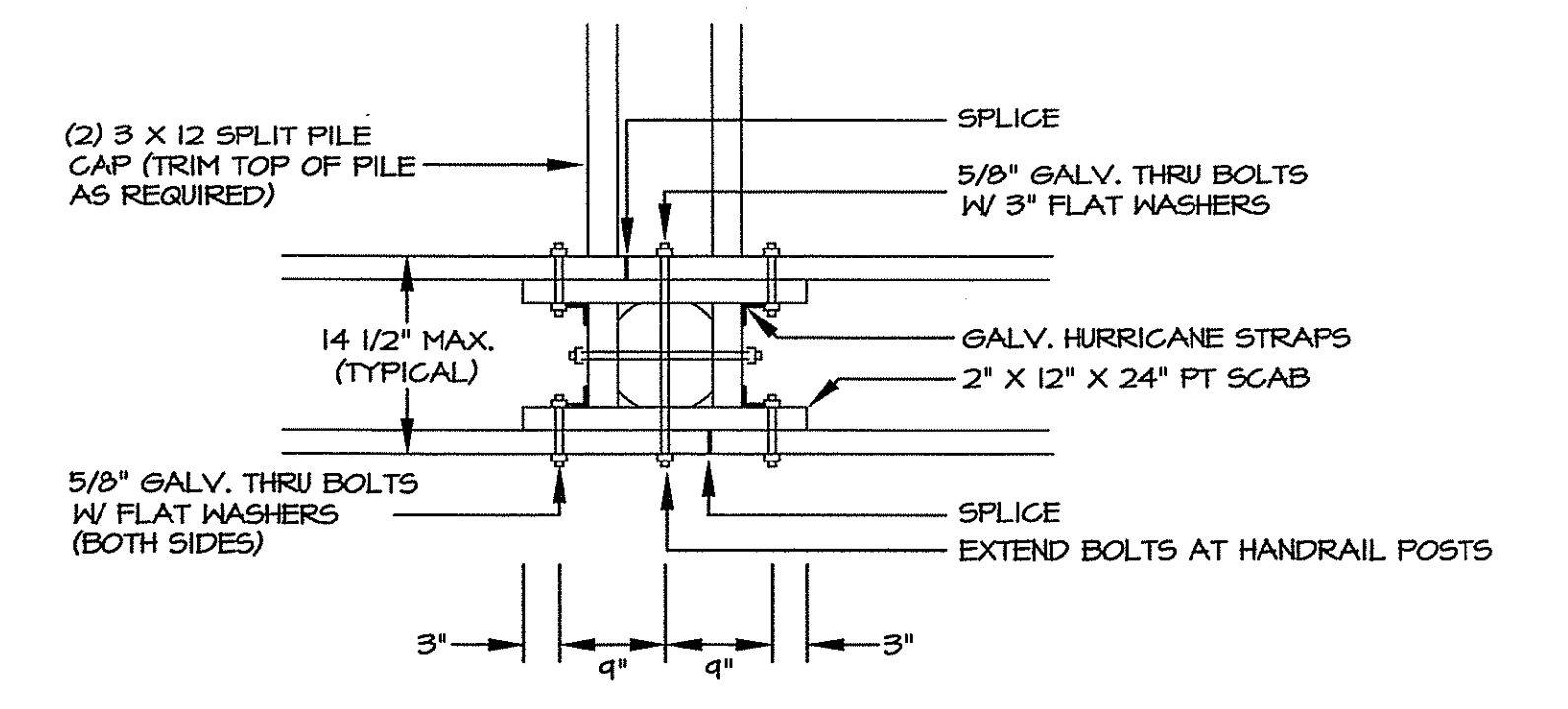


NORTH ABUTMENT SHOWN. SOUTH ABUTMENT SIMILAR EXCEPT ADD ONE PILE AND EXTEND SOUTH EAST CORNER BY 4'-6". SLOPE TOP OF BULK HEAD AND RAIL DOWN AT EXTENSION PARALLEL WITH FINISHED GRADE.

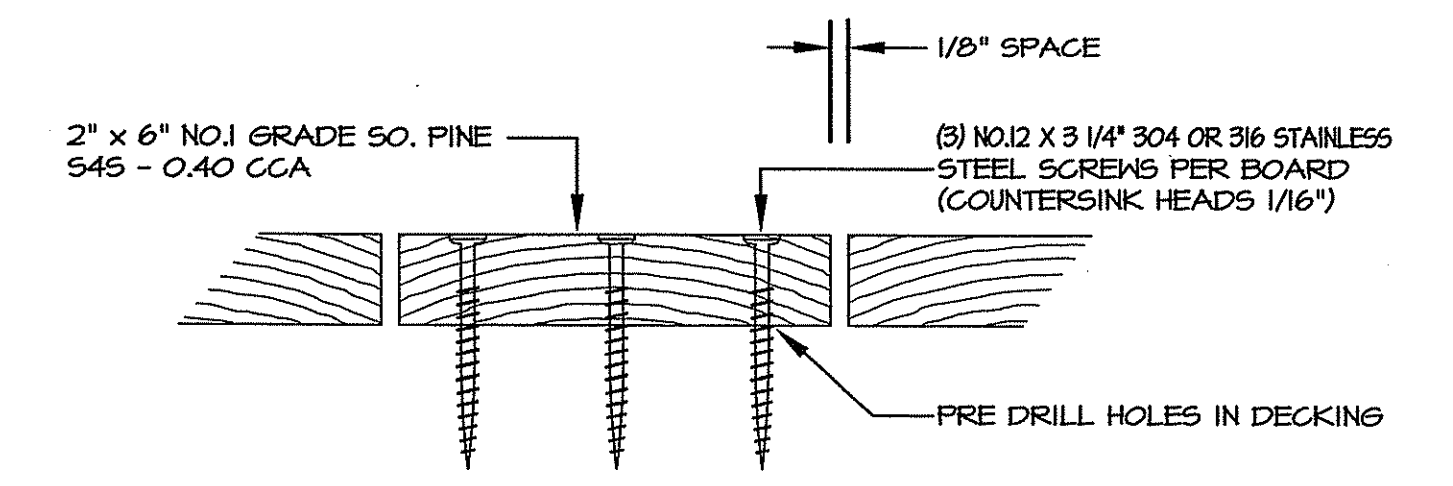
**BULKHEAD PLAN**  
SCALE: 3/4" = 1'-0"



**HANDRAIL / BULKHEAD DETAIL A-A**  
SCALE: 3/4" = 1'-0"



**TYPICAL EXTERIOR SCAB SPLICE DETAIL**  
SCALE: 3/4" = 1'-0"



**DECKING DETAIL**  
NTS

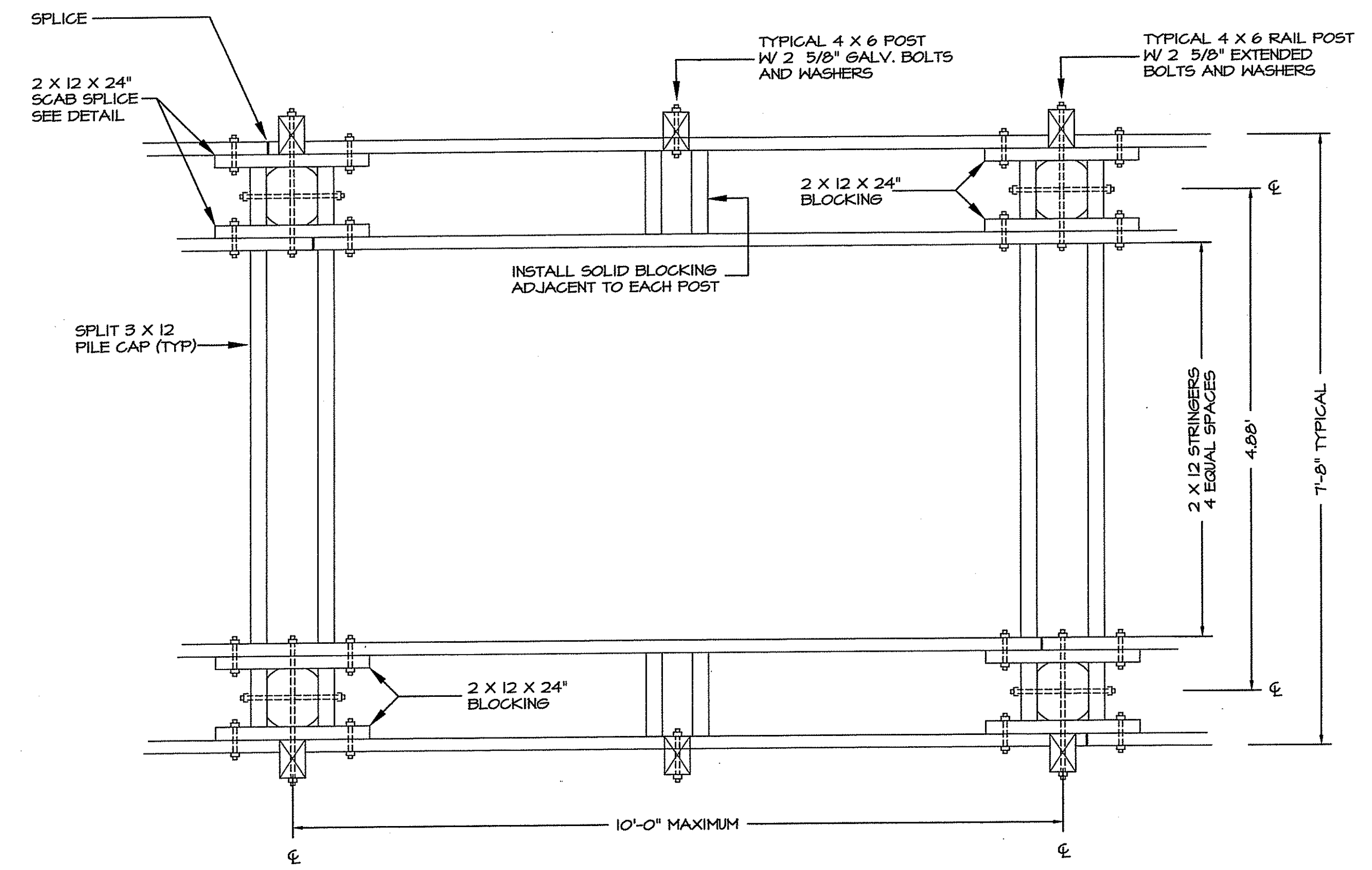
NOTE: ATTACH SCREWS IN A STRAIGHT LINE ACROSS EACH STRINGER

**Kindly be advised that this Permit is not equivalent to a verification of the type or extent of freshwater wetlands on site.**

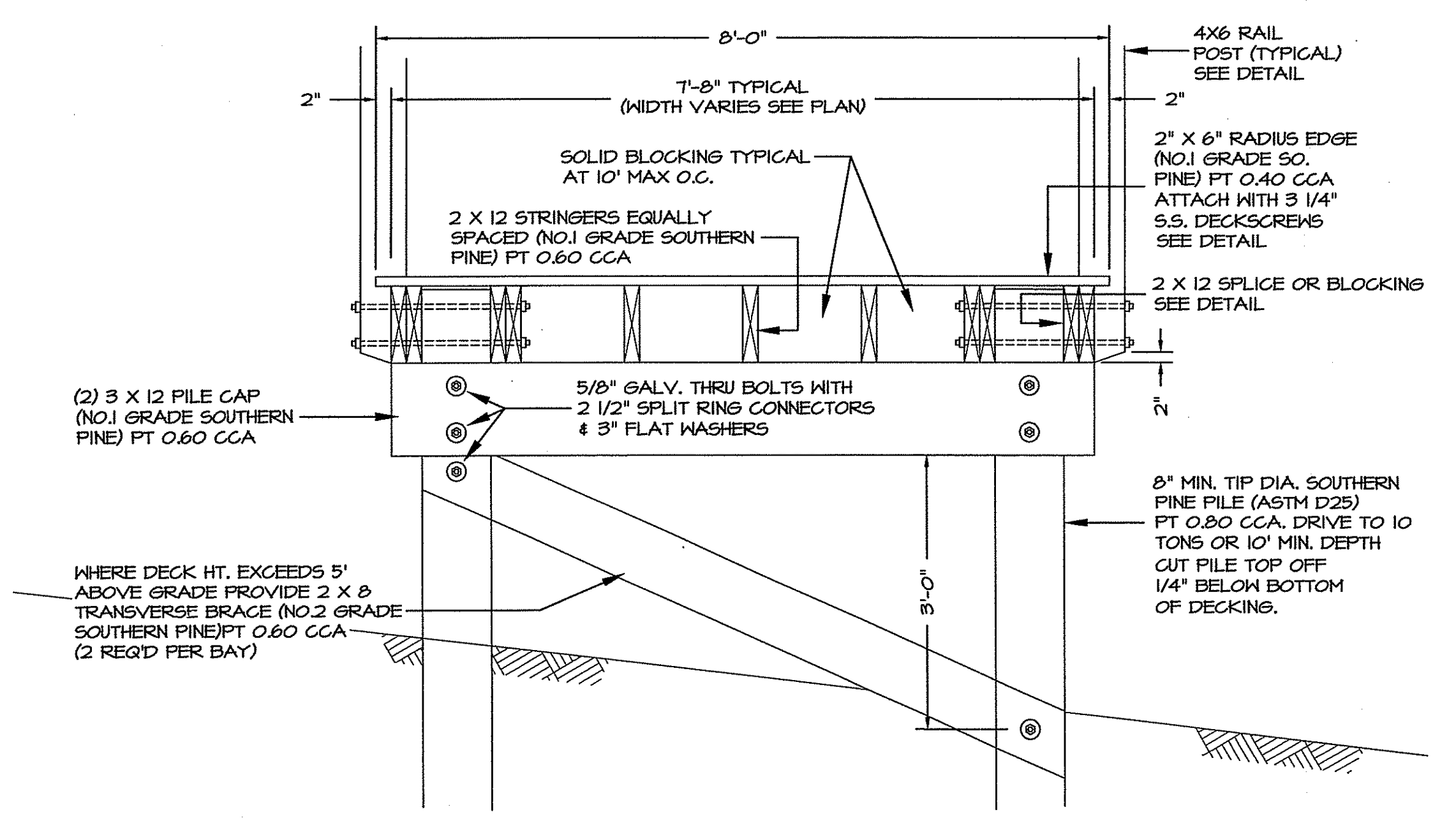
DEPARTMENT OF ENVIRONMENTAL MANAGEMENT  
OFFICE OF WATER RESOURCES  
FRESHWATER WETLANDS PROGRAM  
APPROVED WITH CONDITIONS  
AS SPECIFIED IN THE LETTER OF APPROVAL  
DATED MAY 05 2004 FILE # 03-0524  
NO CHANGES ALLOWED WITHOUT PRIOR APPROVAL.  
APPROVED PLANS MUST BE AT CONSTRUCTION SITE.

*W. Joseph Casey*

MAR 18 2004



**TYPICAL PIER FRAMING PLAN**  
SCALE: 3/4" = 1'-0"



**TYPICAL PIER SECTION**  
SCALE: 3/4" = 1'-0"

	<b>BRIDGE PLAN &amp; DETAILS</b> <b>AGAWAM HUNT</b> <b>15 ROGER WILLIAMS AVE.</b> <b>RUMFORD, RHODE ISLAND</b>	
	<b>CAPUTO AND WICK LTD.</b> 1150 PAWTUCKET AVE. RUMFORD, R.I. 02916 401-434-8880	DATE October 2003 SHEET <b>C-17</b>

REVISED MARCH 2004