

PHYSICAL ALTERATION PERMIT APPLICATION

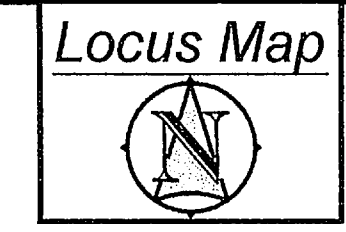
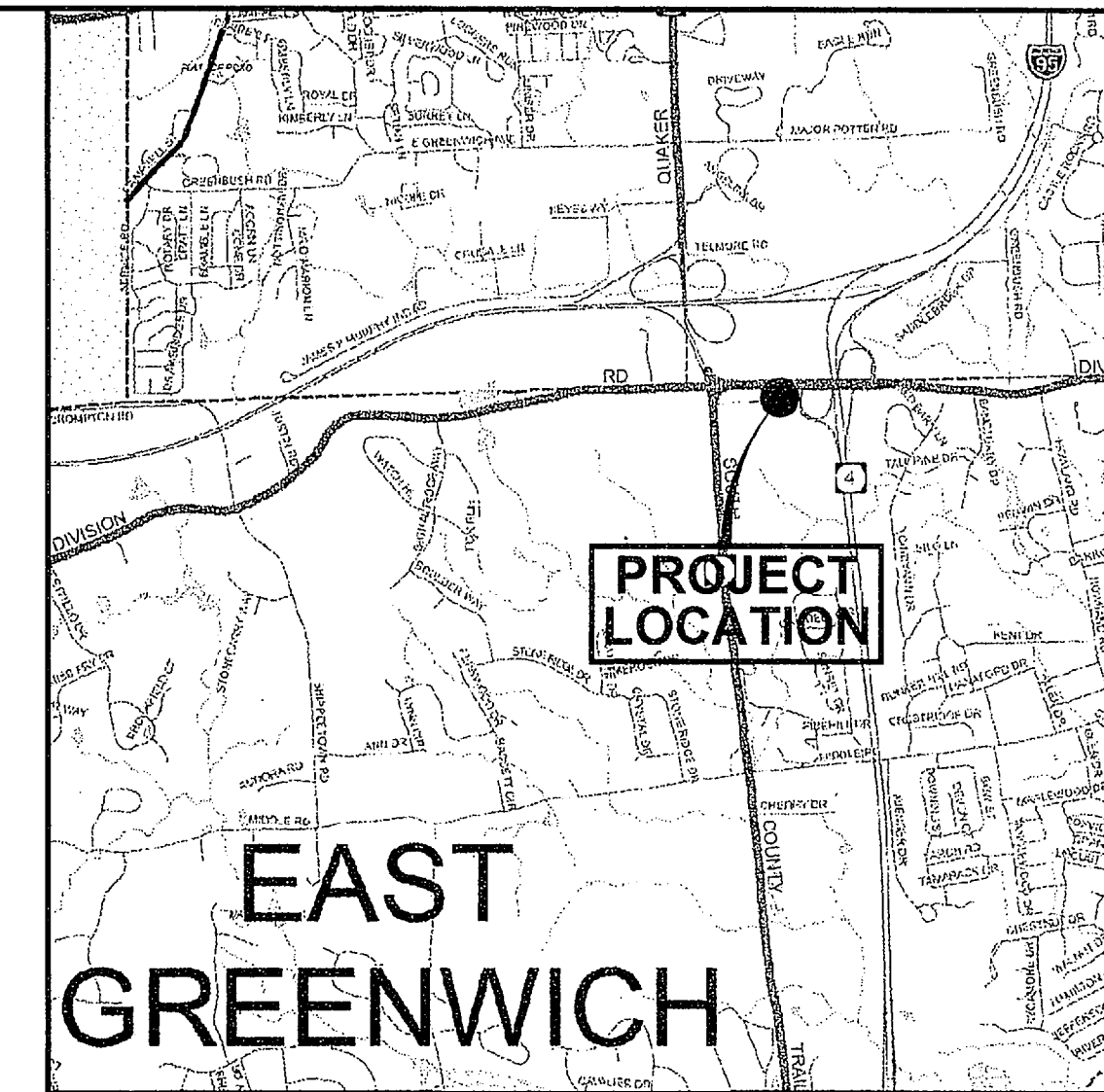
FOR

New England Institute of Technology

LOCATED AT THE

Division Street Campus

East Greenwich, Rhode Island



INDEX OF DRAWINGS

SHEET NO.	TITLE
1	Cover Sheet
2	Legend and Abbreviations
3	Typical Sections and Notes
4,5	Existing Conditions Plan Nos. 1 and 2
6,7	Construction Plan Nos. 1 and 2
8	Traffic Signal Plan
9,10	Drainage and Grading Plans (By Others)
11	Drainage Details (By Others)

DEPARTMENT OF ENVIRONMENTAL MANAGEMENT
OFFICE OF WATER RESOURCES
FRESHWATER WETLANDS PROGRAM
APPROVED WITH CONDITIONS
AS SPECIFIED IN THE LETTER OF APPROVAL
DATED JUN 18 2010 FILE # 06-0233
NO CHANGES ALLOWED WITHOUT PRIOR APPROVAL
APPROVED PLANS MUST BE AT CONSTRUCTION SITE

Charles A. [Signature]

Prepared For:

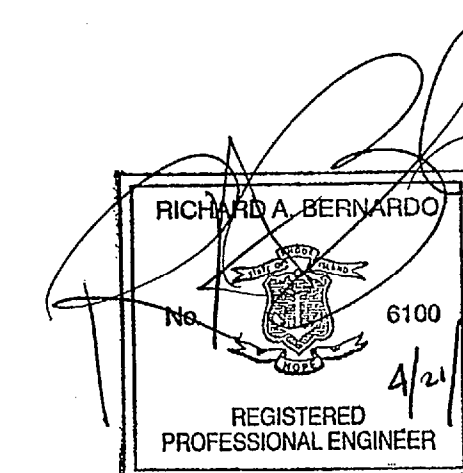
New England Institute of Technology
2500 Post Rd
Warwick, RI 02886

Prepared By:

RAB Professional Engineers, Inc.

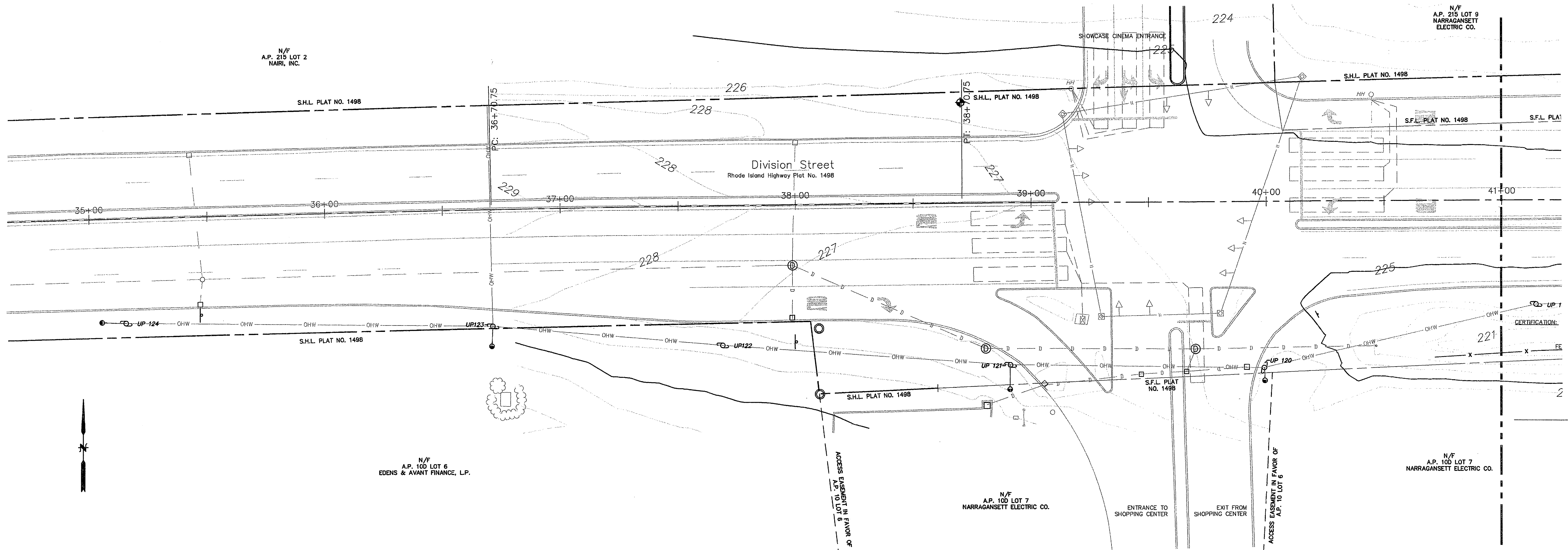
Civil / Transportation Design

10 Ross Simons Drive, Cranston, RI 02920
Phone: (401)463.4100
Fax: (401)463.4150
Email: RABEngineers@Verizon.net



JUN 7 2010

C:\Documents and Settings\Paul_Bannon\My Documents\TRANSPORTATION\Projects\2009 Projects\2009 - 33 NEET PAPA - Division Road\PIPA, PE\Existing Conditions.dwg Apr 19, 2010 3:44pm



Legend:

- A.P. ASSESSOR'S PLAT
- N/F NOW OR FORMERLY
- S.F.L. STATE FREEWAY LINE
- S.H.L. STATE HIGHWAY LINE
- R.I.H.B. RHODE ISLAND HIGHWAY BOUND
- ⊙ DRAINAGE MANHOLE
- CATCH BASIN
- UP123 ○ UTILITY POLE
- DRAINAGE LINE
- OVERHEAD WIRES
- GUY WIRE
- ↑ SIGN
- WATER VALVE
- FIRE HYDRANT
- FENCE
- ⊙ SEWER MANHOLE (SMH)
- 1' CONTOUR LINE
- 5' CONTOUR LINE

General Notes:

1. THE PURPOSE OF THIS PLAN WHICH WAS PROVIDED BY DIPRETE ENGINEERING ASSOCIATES INC., IS TO VERIFY EXISTING FIELD CONDITIONS FROM PLAN REFERENCE NO. 1 NOTED BELOW. THE PLAN WAS SPECIFICALLY PREPARED FOR THE SECTION OF DIVISION STREET ALONG THE SOUTHERN EDGE OF PAVEMENT BETWEEN EAST GREENWICH SQUARE AND ROUTE 4 SOUTHBOUND RAMP, AND IS INCLUDED IN THIS PLAN SET FOR REFERENCE ONLY. RAB PROFESSIONAL ENGINEERS DOES NOT GUARANTEE THE ACCURACY OR COMPLETENESS OF THE PLAN.
2. FIELD SURVEY PERFORMED BY DIPRETE ENGINEERING ON SEPTEMBER 21, 2008.
3. HORIZONTAL COORDINATE SYSTEM AND VERTICAL DATUM/BENCHMARKS ARE BASED ON INFORMATION PROVIDED BY OTHERS.
4. THE CONTRACTOR SHALL COORDINATE WITH ALL OF THE APPROPRIATE UTILITY COMPANIES FOR AGREEMENTS TO SERVICE THE PROPOSED BUILDING. THIS SHALL BE DONE PRIOR TO CONSTRUCTION. NO REPRESENTATIONS ARE MADE BY DIPRETE ENGINEERING THAT UTILITY SERVICE IS AVAILABLE.
5. ALL EXISTING UTILITIES SHOWN ARE FROM VISIBLE INFORMATION, DRAWINGS BY OTHERS, OR INFORMATION PROVIDED TO DIPRETE ENGINEERING AND ARE SUBJECT TO CHANGE. NO ONE SHOULD RELY ON THE UTILITY LOCATIONS SHOWN FOR CONSTRUCTION AND DIG SAFE SHOULD BE NOTIFIED PRIOR TO ANY WORK.

Plan References:

1. DIVISION STREET DRAINAGE AND UTILITY PLAN NO. 2 STA. 34+50 TO STA. 40+50 & DRAINAGE AND UTILITY PLAN NO. 3 STA. 40+50 TO 46+50, DATED APRIL, 2007, 1"=20' PREPARED BY FUSS & O'NEIL FOR RHODE ISLAND DEPARTMENT OF TRANSPORTATION.
2. RHODE ISLAND HIGHWAY PLAT NO. 1498
3. RHODE ISLAND HIGHWAY PLAT NO. 1493

DEPARTMENT OF ENVIRONMENTAL MANAGEMENT
 OFFICE OF WATER RESOURCES
 FRESHWATER WETLANDS PROGRAM
 APPROVED WITH CONDITIONS
 AS SPECIFIED IN THE LETTER OF APPROVAL
 DATED JUN 18 2010 FILE # 06-0233
 NO CHANGES ALLOWED WITHOUT PRIOR APPROVAL
 APPROVED PLANS MUST BE AT CONSTRUCTION SITE

REVISIONS

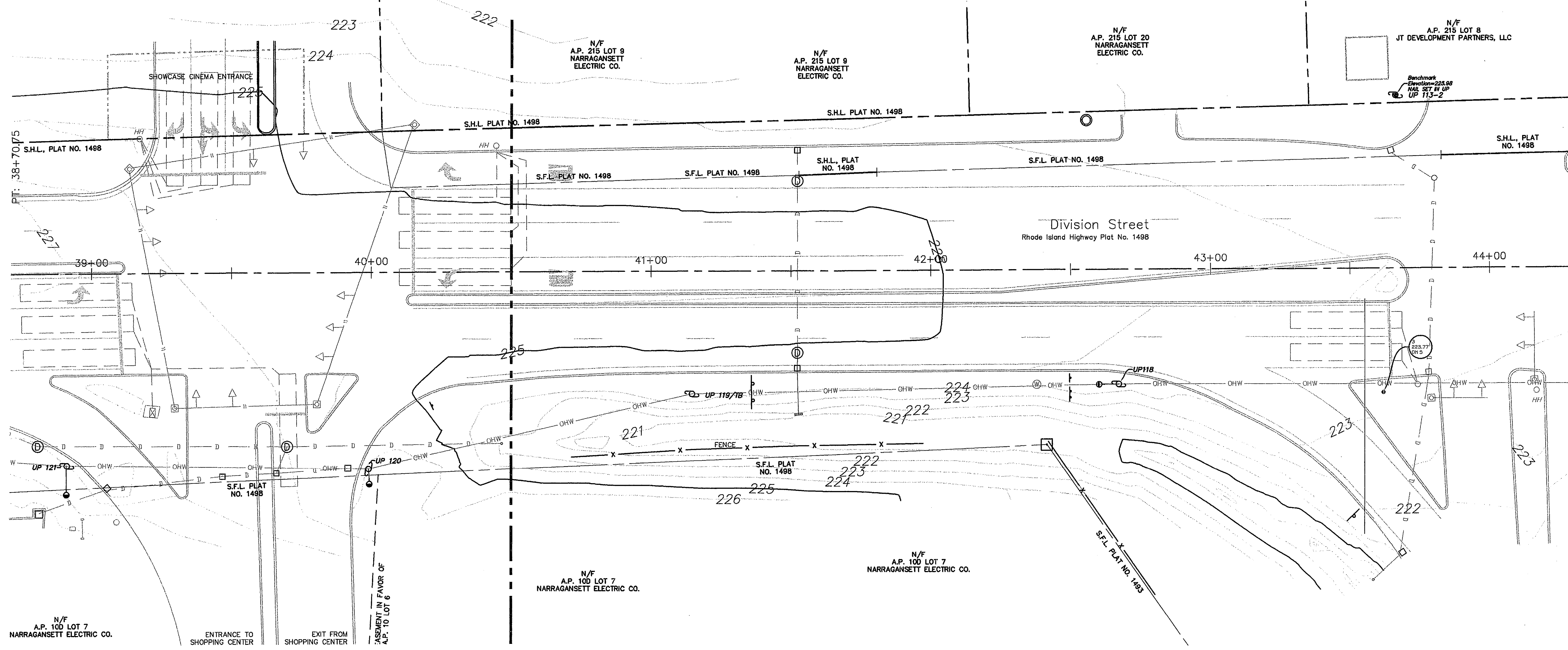
NUMBER	DATE	MADE BY	CHECKED BY	DESCRIPTION
1	3/31/2010	ASM	PJB	RESPONSE TO 03/10/2010 RIDOT COMMENTS

RAB Professional Engineers, Inc.
 Civil / Transportation Design
 10 Ross Simons Drive, Cranston, RI 02920
 Phone: (401)463.4100
 Fax: (401)463.4150
 Email: RABEngineers@Verizon.net

Physical Alteration Permit Application
New England Institute of Technology
 East Greenwich, Rhode Island
Existing Conditions Plan No. 1

DRAWING NAME
 March 31, 2010
 DATE:
 1"=20'
 SCALE: (UNLESS OTHERWISE NOTED OR CHANGED BY REPRODUCTION)

ASM
 DRAWN BY:
 PJB
 DEPT. CHECK:
 RAB
 PROJ. CHECK:
 SHEET 4 of 11



Legend:

- A.P. ASSESSOR'S PLAT
- N/F NOW OR FORMERLY
- S.F.L. STATE FREEWAY LINE
- S.H.L. STATE HIGHWAY LINE
- R.I.H.B. RHODE ISLAND HIGHWAY BOUND
- ⊙ DRAINAGE MANHOLE
- CATCH BASIN
- UP123 UTILITY POLE
- D — DRAINAGE LINE
- OHW — OVERHEAD WIRES
- GUY WIRE
- SIGN
- WATER VALVE
- FIRE HYDRANT
- X — FENCE
- ⊙ SEWER MANHOLE (SMH)
- 1' CONTOUR LINE
- 5' CONTOUR LINE

General Notes:

1. THE PURPOSE OF THIS PLAN WHICH WAS PROVIDED BY DIPRETE ENGINEERING ASSOCIATES INC. IS TO VERIFY EXISTING FIELD CONDITIONS FROM PLAN REFERENCE NO. 1 NOTED BELOW. THE PLAN WAS SPECIFICALLY PREPARED FOR THE SECTION OF DIVISION STREET ALONG THE SOUTHERN EDGE OF PAVEMENT BETWEEN EAST GREENWICH SQUARE AND ROUTE 4 SOUTHBOUND RAMPS, AND IS INCLUDED IN THIS PLAN SET FOR REFERENCE ONLY. RAB PROFESSIONAL ENGINEERS DOES NOT GUARANTEE THE ACCURACY OR COMPLETENESS OF THE PLAN.
2. FIELD SURVEY PERFORMED BY DIPRETE ENGINEERING ON SEPTEMBER 21, 2009.
3. HORIZONTAL COORDINATE SYSTEM AND VERTICAL DATUM/BENCHMARKS ARE BASED ON INFORMATION PROVIDED BY OTHERS.
4. THE CONTRACTOR SHALL COORDINATE WITH ALL OF THE APPROPRIATE UTILITY COMPANIES FOR AGREEMENTS TO SERVICE THE PROPOSED BUILDING. THIS SHALL BE DONE PRIOR TO CONSTRUCTION. NO REPRESENTATIONS ARE MADE BY DIPRETE ENGINEERING THAT UTILITY SERVICE IS AVAILABLE.
5. ALL EXISTING UTILITIES SHOWN ARE FROM VISIBLE INFORMATION, DRAWINGS BY OTHERS, OR INFORMATION PROVIDED TO DIPRETE ENGINEERING AND ARE SUBJECT TO CHANGE. NO ONE SHOULD RELY ON THE UTILITY LOCATIONS SHOWN FOR CONSTRUCTION AND DIG SAFE SHOULD BE NOTIFIED PRIOR TO ANY WORK.

Plan References:

1. DIVISION STREET DRAINAGE AND UTILITY PLAN NO. 2 STA. 34+50 TO STA. 40+50 & DRAINAGE AND UTILITY PLAN NO. 3 STA. 40+50 TO 46+50, DATED APRIL, 2007, 1"=20' PREPARED BY FUSS & O'NEIL FOR RHODE ISLAND DEPARTMENT OF TRANSPORTATION.
2. RHODE ISLAND HIGHWAY PLAT NO. 1498
3. RHODE ISLAND HIGHWAY PLAT NO. 1493

DEPARTMENT OF ENVIRONMENTAL MANAGEMENT
 OFFICE OF WATER RESOURCES
 FRESHWATER WETLANDS PROGRAM
 APPROVED WITH CONDITIONS
 AS SPECIFIED IN THE LETTER OF APPROVAL
 DATED JUN 18 2010 FILE # 06-0233
 NO CHANGES ALLOWED WITHOUT PRIOR APPROVAL
 APPROVED PLANS MUST BE AT CONSTRUCTION SITE

C:\Documents and Settings\Paul Bennett\My Documents\TRANSPORTATION\Projects\2009 Projects\2009 - 33 NEET PAPA - Division Road\PAPA - Existing Conditions.dwg Apr 19, 2010 3:49pm

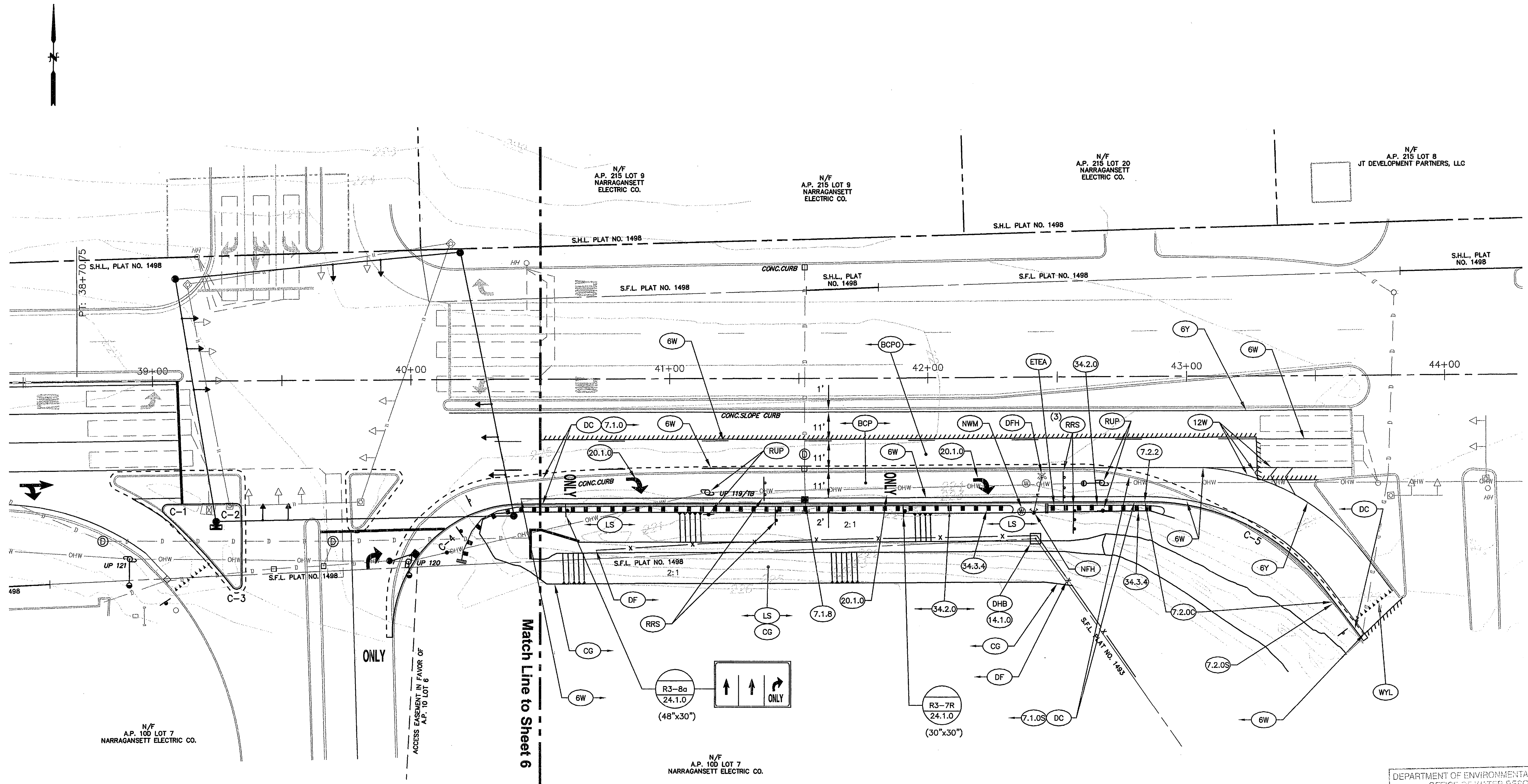
REVISIONS				
NUMBER	DATE	MADE BY	CHECKED BY	DESCRIPTION
1	3/31/2010	ASM	FJB	RESPONSE TO 03/10/2010 RIDOT COMMENTS

RAB Professional Engineers, Inc.
 Civil / Transportation Design
 10 Ross Simons Drive, Cranston, RI 02920
 Phone: (401)463.4100
 Fax: (401)463.4150
 Email: RABEngineers@Verizon.net

Physical Alteration Permit Application
New England Institute of Technology
 East Greenwich, Rhode Island
Existing Conditions Plan No. 2

DRAWING NAME March 31, 2010	DATE	SCALE 1"=20' (UNLESS OTHERWISE NOTED OR CHANGED BY REPRODUCTION)
DRAWN BY: PJB	DEPT. CHECK: RAB	PROJ. CHECK:
SHEET 5 OF 11		

C:\Documents and Settings\Poul_Bonnon\My Documents\TRANSPORTATION\Projects\2009 Projects\2009 - 33 NETT PAPA - Division Road\PAPA - Division Road Construction Plans.dwg, May 11, 2010 2:13pm



NOTES:

1. THE BASELINE INFORMATION PROVIDED ON THIS PLAN WAS OBTAINED FROM THE RHODE ISLAND DEPARTMENT OF TRANSPORTATION (RIDOT), RECORD INFORMATION, FOR STATE HIGHWAY PLAT NO. 1498. THE BASELINE IS PROVIDED FOR GENERAL LOCATION AND DESCRIPTION ONLY. THE CONTRACTOR SHALL ESTABLISH THE RIDOT RECORD BASELINE FROM FIELD CONTROL AND MAKE ADJUSTMENTS AS DIRECTED BY THE ENGINEER TO MATCH ACTUAL FIELD CONDITIONS.
2. IT IS THE INTENT OF THIS CONTRACT TO MAINTAIN THE EXISTING ROADWAY CROSS-SLOPES IN THE PAVEMENT WIDENING AREA. THE CONTRACTOR SHALL ESTABLISH THE NEW GUTTER LINE IN ACCORDANCE WITH THESE PLANS AND ADJUST EXISTING UTILITIES AS REQUIRED.
3. ALL RELOCATED SIGNS SHALL BE PLACED ON RI STANDARD MOUNTINGS IN ACCORDANCE WITH RI STANDARD DETAILS 24.1.0 AND 24.6.0. THE PAVEMENT MARKINGS DEPICTED ON THIS PLAN SHEET REPRESENT FINAL PAVEMENT MARKINGS ON DIVISION STREET. ANY MARKINGS NOT IN CONFORMANCE WITH THE PLAN SHALL BE REMOVED BY RIDOT APPROVED METHODS.
4. DRIVEWAY ACCESS/EGRESS TO THE EAST GREENWICH SHOPPING CENTER SHALL BE MAINTAINED AT ALL TIMES DURING CONSTRUCTION. NO WORK ON THE DRIVEWAY THAT REDUCES THE NUMBER OF LANES OR RESTRICTS ACCESS/EGRESS SHALL BE PERMITTED BETWEEN 6:00AM AND 9:00PM.

DEPARTMENT OF ENVIRONMENTAL MANAGEMENT
 OFFICE OF WATER RESOURCES
 FRESHWATER WETLANDS PROGRAM
 APPROVED WITH CONDITIONS
 AS SPECIFIED IN THE LETTER OF APPROVAL
 DATED JUN 18 2010 FILE # 06-0233
 NO CHANGES ALLOWED WITHOUT PRIOR APPROVAL
 APPROVED PLANS MUST BE AT CONSTRUCTION SITE

CURVED CURB DATA									
CURVE No.	RADIUS	LENGTH	Δ	TANGENT	PC STATION	PC OFFSET	PT STATION	PT OFFSET	
C-5	85.00'	78.48'	52°54'03"	42.30	42+85.50	48.20' RT	43+53.00	82' RT	

REVISIONS				
NUMBER	DATE	MADE BY	CHECKED BY	DESCRIPTION
1	3/31/2010	ASM	PJB	RESPONSE TO 03/10/2010 RIDOT COMMENTS

RAB Professional Engineers, Inc.
 Civil / Transportation Design
 10 Ross Simons Drive, Cranston, RI 02920
 Phone: (401)463.4100
 Fax: (401)463.4150
 Email: RABEngineers@Verizon.net

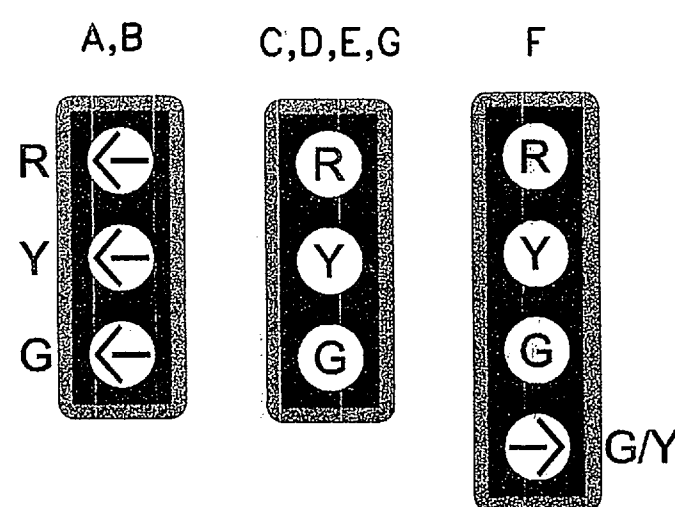
Physical Alteration Permit Application
New England Institute of Technology
 East Greenwich, Rhode Island
Construction Plan No. 2

DRAWING NAME	ASM
DATE	DRAWN BY: PJB
	DEPT. CHECK: RAB
	PROJ. CHECK:
SCALE: 1"=20'	SHEET 7 of 11

TRAFFIC SIGNAL MATERIALS LIST

ITEM NO.	LEGEND	ITEM CODE	ITEM DESCRIPTION
1a	■	T05.0100	PRECAST TYPE "A" HANDHOLE STD. 18.2.0
1c	□	T05.0200	BREAK INTO EXISTING HANDHOLE
2c	—	T06.5030	3 INCH POLYVINYL CHLORIDE PLASTIC CONDUIT (SCHEDULE 40) - UNDERGROUND
3e	⊠	T12.9901	ACTUATED CONTROLLER TS-2, TYPE 1 W/ 8 PHASE ASSEMBLY, POLE MOUNTED INC. CABINET STD. 19.1.1
3f	○	T12.9150	METER SOCKET WITH MANUAL BY-PASS
4i	●	T11.2500	TRAFFIC SIGNAL STANDARD GALVANIZED STEEL STD. 19.3.0
5a	—	T11.6005	TETHER WIRE 5/16
5b	—	T11.6006	SPAN AND MESSENGER WIRE 6/16
6b	→	T14.3413	1 WAY, 3 SECTION SPAN MOUNTED SIGNAL HEAD 12 INCH
6c	→	T14.3416	1 WAY, 4 SECTION SPAN MOUNTED SIGNAL HEAD 12 INCH W/ DUAL INDICATION DOUBLE ROW L.E.D. ARROW
7c	—	T04.5302	14 AWG 2 CONDUCTOR TWISTED SHIELDED CABLE
7e	—	T04.5305	14 AWG 5 CONDUCTOR CABLE
7f	—	T04.5307	14 AWG 7 CONDUCTOR CABLE
9a	■	T13.1000	TRAFFIC DETECTOR - LOOP STANDARD 19.6.0
9c	■	T13.1004	TRAFFIC DETECTOR RELAY - LOOP 4 CHANNEL

SIGNAL FACE DESIGNATIONS



NOTES:

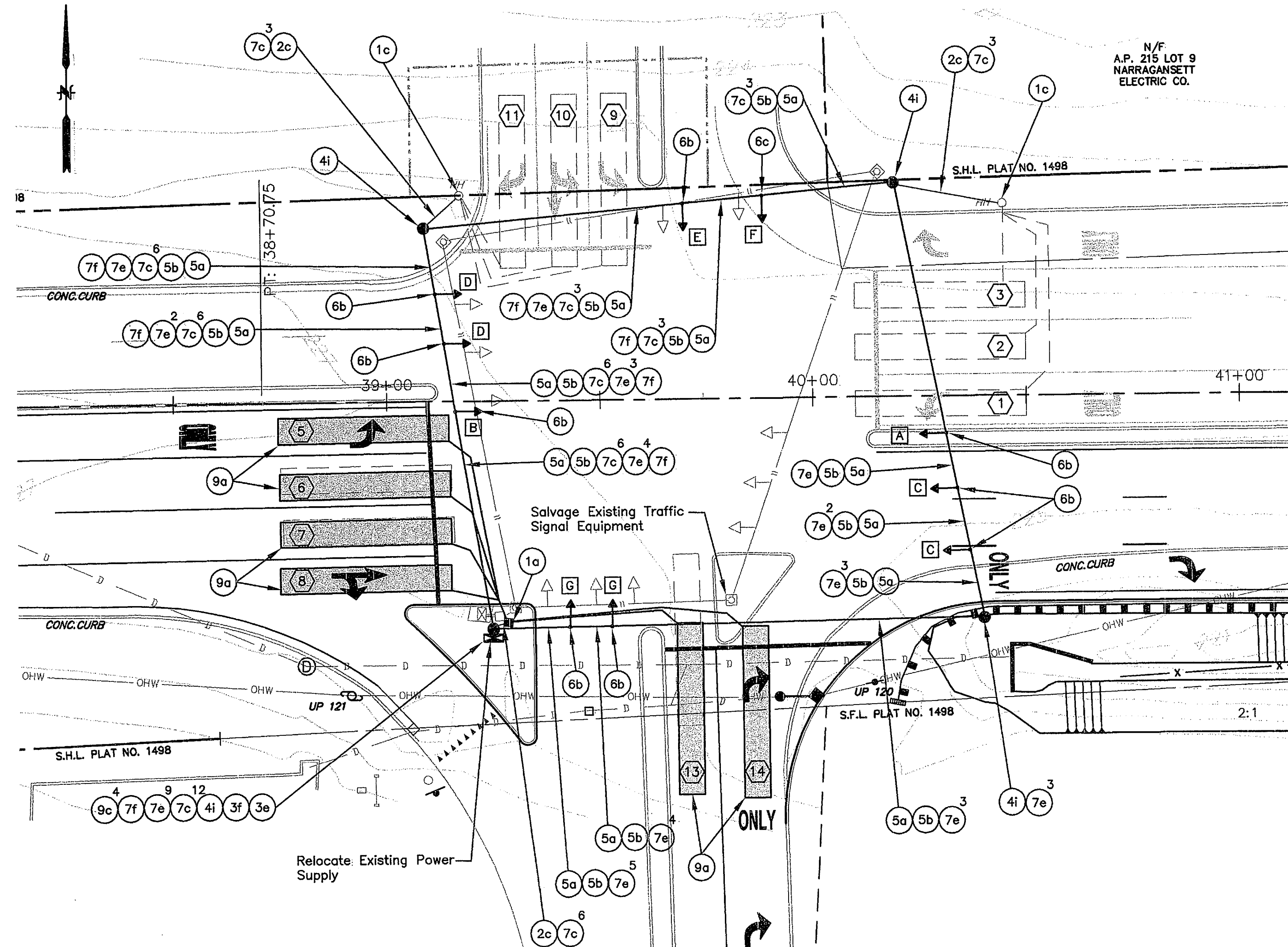
- ALL INDICATIONS SHALL BE LIGHT EMITTING DIODE(LED).
- ARROW INDICATIONS SHALL BE TWO ROWS OF LED'S.

GENERAL NOTES:

- THE SPAN POLES, SIGNAL HEADS AND CONTROLLER CABINET EQUIPMENT AS DESIGNATED SHALL BE SALVAGED. ALL OTHER MATERIALS SHALL BE REMOVED AND DISPOSED ACCORDINGLY. ALL SALVAGED TRAFFIC SIGNAL EQUIPMENT SHALL BE DELIVERED TO THE RIDOT MAINTENANCE HEADQUARTERS, 360 LINCOLN AVENUE, WARWICK.
- THE HEIGHT OF THE SIGNAL HEADS SHALL BE ADJUSTED BY EXTENSIONS TO THE SIGNAL HEAD HANGERS SO THAT THE RED INDICATIONS OF EACH SIGNAL HEAD ARE AT THE SAME HEIGHT.
- ANY TRAFFIC DETECTOR LOOPS OTHER THAN THOSE DESIGNATED FOR REPLACEMENT, THAT ARE DAMAGED DURING CONSTRUCTION OF THE ROADWAY IMPROVEMENTS OR UTILITY INSTALLATIONS, SHALL BE REPLACED BY THE CONTRACTOR.
- THE CONTRACTOR SHALL CONDUCT A UTILITY LOCATING PROGRAM AND COORDINATE WITH ALL AFFECTED UTILITY COMPANIES TO DEFINE POTENTIAL UNDERGROUND CONFLICTS WITH TRAFFIC SIGNAL EQUIPMENT AND FOUNDATIONS, AND OVERHEAD FACILITIES WITH SPAN POLES. THE CONTRACTOR SHALL VERIFY THAT MINIMUM CLEARANCES TO OVERHEAD FACILITIES ARE PROVIDED IN ACCORDANCE WITH RHODE ISLAND DEPARTMENT OF TRANSPORTATION DESIGN POLICIES AND SPECIFICATIONS. THE DESIGNER SHALL BE NOTIFIED OF ANY CONFLICTS REQUIRING DESIGN MODIFICATIONS OR PLAN CHANGES IN EQUIPMENT LOCATIONS DUE TO CONFLICTS PRIOR TO ORDERING AND DESIGNING THE SPAN POLES AND ASSOCIATED EQUIPMENT AND/OR INSTALLING FOUNDATIONS.

CONTROLLER PHASING AND TIMING NOTES:

- THE SEQUENCE AND TIMING CHART IS PROVIDED FOR REFERENCE ONLY. THE INFORMATION DEPICTED IN THE CHART REPRESENTS THE LATEST AVAILABLE RECORD OF EXISTING PROGRAMMING. THE CONTROLLER PROGRAMMING SHALL NOT BE ALTERED AS PART OF THIS PROJECT, FROM THE ACTUAL PROGRAMMING AS DETERMINED IN THE FIELD PRIOR TO CONSTRUCTION. IF THE CONTRACTOR IDENTIFIES A DISCREPANCY BETWEEN THIS PLAN AND THE ACTUAL FIELD CONDITIONS, THE CONTRACTOR SHALL NOTIFY THE RIDOT TRAFFIC SECTION TO DETERMINE THE MOST RECENT AND PREFERRED PROGRAMMING.
- THE NEW CONTROLLER SHALL BE FROM THE SAME MANUFACTURER WITH THE SAME FUNCTIONAL CAPABILITIES AND BE COMPATIBLE WITH THE EXISTING COORDINATED TRAFFIC SIGNAL SYSTEM ALONG DIVISION STREET.



COORDINATION DATA
(ALL ENTRIES IN SECONDS)

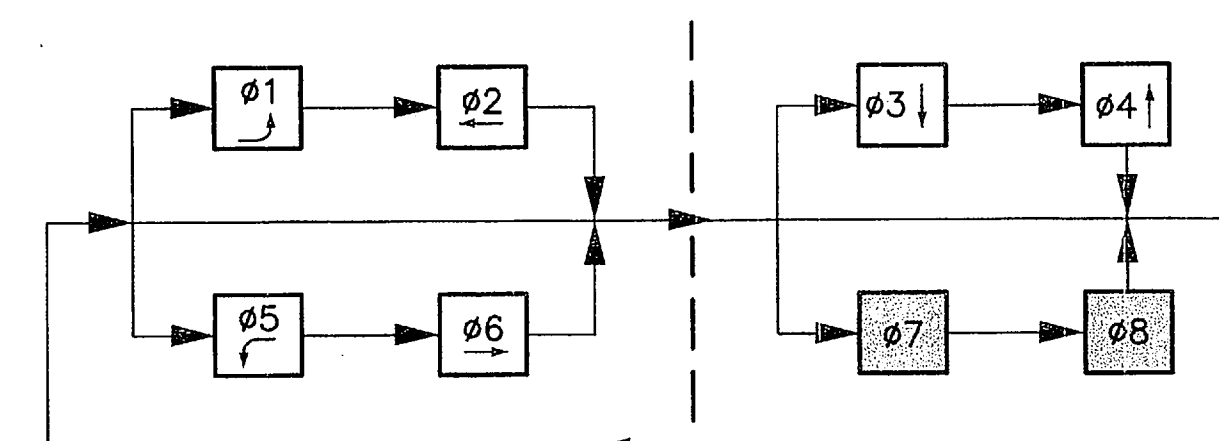
	CYCLE 1	CYCLE 2	CYCLE 2A	CYCLE 3
CYCLE LENGTH	90	80	80	95
OFFSET	70	65	65	70
SPLIT Ø1	16	16	24	20
SPLIT Ø2	45	35	20	45
SPLIT Ø3	14	14	21	14
SPLIT Ø4	15	15	15	16
SPLIT Ø5	21	21	20	20
SPLIT Ø6	40	30	24	45
COORDINATED PHASE	Ø2&Ø6	Ø2&Ø6	Ø2&Ø6	Ø2&Ø6

CYCLES NOTED REPRESENT THE DIAL SETTINGS UNDER SPLIT 1 TIMINGS. CYCLE 2A NOTED REPRESENTS A DIAL 2/SPLIT 2 TIMING.

TIME OF DAY PLAN

SAT/SUN		MON-THUR		FRI	
HH:MM	C/S/O	HH:MM	C/S/O	HH:MM	C/S/O
07:00	2/1/1	07:00	1/1/1	07:00	1/1/1
18:00	2/2/1	09:30	2/1/1	09:30	2/1/1
23:00	Free	15:00	1/1/1	15:00	1/1/1
		16:30	3/1/1	16:30	3/1/1
		18:00	2/1/1	18:00	2/2/1
		22:00	Free	23:00	Free

PHASE SEQUENCE CHART



NOTE: PHASES 7 AND 8 ARE NOT IN USE.

LOOP DETECTOR DATA

DETECTOR NO.	SIZE	RELAY	SLOT	CALL PHASE	EXT. PHASE	DELAY	MODE
1	EXISTING	1	2	5	5	3	PRESENCE
2	EXISTING	1	2	2	2	3	PRESENCE
3	EXISTING	1	2	2	2	0	PRESENCE
5	PROPOSED	2	4	1	1	5	PRESENCE
6	PROPOSED	2	4	6	6	5	PRESENCE
7	PROPOSED	2	4	6	6	3	PRESENCE
8	PROPOSED	2	4	6	6	3	PRESENCE
9	EXISTING	3	6	3	3	3	PRESENCE
10	EXISTING	3	6	3	3	3	PRESENCE
11	EXISTING	3	6	3	3	8	PRESENCE
13	PROPOSED	4	8	3	3	3	PRESENCE
14	PROPOSED	8	8	4	4	8	PRESENCE

SEQUENCE AND TIMING		Ø1		Ø2		Ø3		Ø4		Ø5		Ø6		Ø7		Ø8		FLASHING
STREET	DIR.	HEADS	GREEN	CL1	CL2	GREEN	CL1	CL2	GREEN	CL1	CL2	GREEN	CL1	CL2	GREEN	CL1	CL2	
DIVISION STREET	EBL	A	→G	→Y	→R	→R	→R	→R	→R	→R	→R	→R	→R	→R	→R	→R	→R	→R
DIVISION STREET	EB	C	R	R	R	R	R	R	R	R	R	R	R	R	R	R	R	Y
DIVISION STREET	WBL	B	→R	→R	→R	→R	→R	→R	→R	→R	→R	→R	→R	→R	→R	→R	→R	→R
DIVISION STREET	WB	D	R	R	R	R	R	R	R	R	R	R	R	R	R	R	R	Y
EG SQUARE	NB	E	R	R	R	R	R	R	R	R	R	R	R	R	R	R	R	R
EG SQUARE	NB	F	R	R	R	R	R	R	R	R	R	R	R	R	R	R	R	R
SHOWCASE	SB	G	R	R	R	R	R	R	R	R	R	R	R	R	R	R	R	R
INTERVALS																		
INITIAL 1			6			7			6			6			7			
EXTENSION			2.4			2.8			2.4			2.4			2.8			
MAX 1			10			35			10			10			35			
MAX 2			10			35			17			11			35			
CLEARANCE				3	1		4.5	1.5		3	1		3	1		4.5	1.5	
PEDESTRIAN																		
MEMORY			NON-LOCKING			NON-LOCKING			-			NON-LOCKING			NON-LOCKING			
RECALL			OFF			SOFT			-			OFF			SOFT			

NOT IN USE

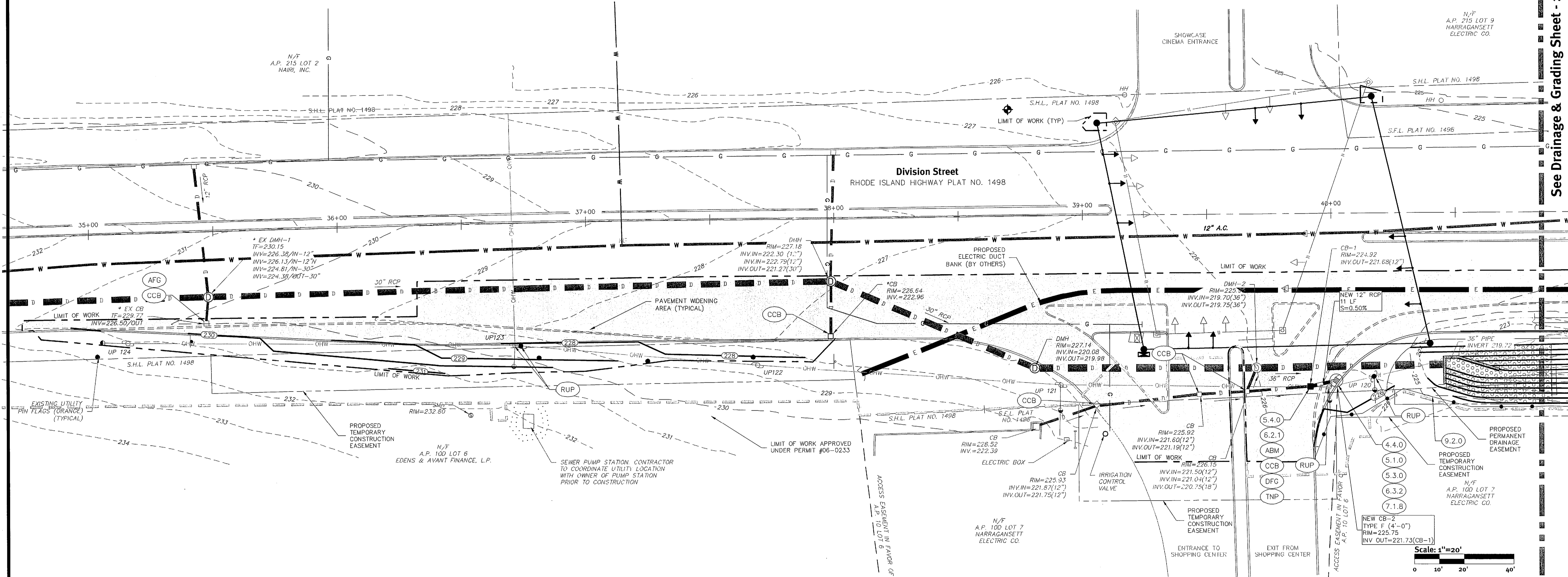
NOT IN USE

REVISIONS				DESCRIPTION
NUMBER	DATE	MADE BY	CHECKED BY	
1	3/31/2010	ASM	PJB	RESPONSE TO 03/10/2010 RIDOT COMMENTS

RAB Professional Engineers, Inc.
Civil / Transportation Design
10 Ross Simons Drive, Cranston, RI 02920
Phone: (401)463.4100
Fax: (401)463.4150
Email: RABEngineers@Verizon.net

Physical Alteration Permit Application
New England Institute of Technology
East Greenwich, Rhode Island
Traffic Signal Plan

SIGNAL NO. 471
DATE: JUN 18 2010
FILE # 06-0233
APPROVED WITH CONDITIONS
March 31, 2010
1"=20'
SCALE: (UNLESS OTHERWISE NOTED OR CHANGED BY REPRODUCTION)
ASM
DRAWN BY: PJB
DEPT. CHECK: RAB
PROJ. CHECK:
SHEET 8 of 11



See Drainage & Grading Sheet - 2

Key Notes (Grading Sheet 1 & 2)

- | | | | |
|---------|---|-------|--------------------------------------|
| (4.4.0) | PRECAST 4'-0", 5'-0", OR 6'-0" ROUND CATCH BASIN | (AFG) | ADJUST FRAME AND GRATE |
| (5.1.0) | PRECAST CONCRETE SUMP FOR ROUND CATCH BASINS (WET AREAS) | (DFG) | REMOVE AND DISPOSE FRAME AND GRATE |
| (5.3.0) | CATCH BASIN AND MANHOLE STEP | (DF) | REMOVE AND DISPOSE FENCE |
| (5.4.0) | CONCRETE COLLARS | (DH) | REMOVE AND DISPOSE HEADWALL |
| (6.2.1) | HEAVY-DUTY ROUND FRAME AND COVER | (NUP) | NEW UTILITY POLE |
| (6.3.2) | SQUARE FRAME AND GRATE (BICYCLE SAFE) | (RFH) | RELOCATE AND REPLACE FIRE HYDRANT |
| (7.1.8) | PRECAST CONCRETE APRON STONE (FOR ROUND CATCH BASIN) | (RUP) | RELOCATE UTILITY POLE (BY OTHERS) |
| (8.1.0) | SEEDED DITCH (2:1 SIDE SLOPES AND TURF REINFORCEMENTS MATS) | (RWM) | RELOCATE AND REPLACE WATER METER |
| (8.3.0) | RIP-RAP DITCH | (TEP) | TIE EXISTING PIPE INTO NEW STRUCTURE |
| (9.2.0) | SILT FENCE | (TNP) | TIE NEW PIPE INTO EXISTING STRUCTURE |
| (9.4.0) | BALED HAY DITCH AND SWALE EROSION CHECK | | |
| (ABM) | ADJUST CATCH BASIN TO MANHOLE | | |
| (CCB) | CLEAN CATCH BASIN | | |

Grading Legend:

- | | | | |
|-------------------------|--|-----------------------------|--|
| NEW CONTOUR | | EXISTING MANHOLE | |
| EXISTING MAJOR CONTOUR | | NEW CATCH BASIN | |
| EXISTING MINOR CONTOUR | | EXISTING CATCH BASIN | |
| EXISTING SPOT GRADE | | NEW PAVEMENT AREA | |
| NEW SPOT GRADE | | SILT FENCE | |
| STAKED HAYBALES | | EXISTING CURB TO BE REMOVED | |
| LIMIT OF WORK | | EXISTING GAS LINE | |
| NEW DRAIN LINE | | | |
| EXISTING DRAIN LINE | | | |
| NEW WATER LINE | | | |
| EXISTING WATER LINE | | | |
| RELOCATED UTILITY POLE | | | |
| EXISTING UTILITY POLE | | | |
| EXISTING OVERHEAD WIRES | | | |

Abbreviations:

- | | |
|-----|------------------|
| EX | EXISTING |
| CB | CATCH BASIN |
| DMH | DRAINAGE MANHOLE |
| INV | INVERT |
| LF | LINEAR FEET |
| SMH | SEWER MANHOLE |

Grading Notes

- THE TOPOGRAPHY PROVIDED ON THIS PLAN WAS OBTAINED FROM THE RHODE ISLAND DEPARTMENT OF TRANSPORTATION (RIDOT), RECORD INFORMATION, FOR STATE HIGHWAY PLAT NO. 1498.
- IT IS THE INTENT OF THIS CONTRACT TO MAINTAIN THE EXISTING ROADWAY CROSS-SLOPES IN THE PAVEMENT WIDENING AREA. THE CONTRACTOR SHALL ESTABLISH THE NEW GUTTER LINE IN ACCORDANCE WITH THE LOCATION PLANS AND ADJUST EXISTING UTILITIES AS REQUIRED.
- THE CONTRACTOR SHALL LOAM AND SEED ALL AREAS ADJACENT TO NEW CURBING, AREAS WITH PROPOSED GRADING, AND AREAS THAT ARE DISTURBED BY CONSTRUCTION OPERATIONS.
- EXISTING GRADES ARE TO BE MAINTAINED EXCEPT AS SHOWN IN AREAS DESIGNATED ON THIS PLAN.
- TURF REINFORCEMENT (LANDLOK® OR APPROVED EQUAL) IS TO BE INSTALLED ON THE 2:1 SIDE SLOPES OF THE DRAINAGE SWALE.

Utility Notes

- THE BASELINE INFORMATION PROVIDED ON THIS PLAN WAS OBTAINED FROM THE RHODE ISLAND DEPARTMENT OF TRANSPORTATION (RIDOT), RECORD INFORMATION FOR STATE HIGHWAY PLAT NO. 1498. THE BASELINE IS PROVIDED FOR GENERAL LOCATION AND DESCRIPTION ONLY. THE CONTRACTOR SHALL ESTABLISH THE RIDOT RECORD BASELINE FROM FIELD CONTROL AND MAKE ADJUSTMENTS AS DIRECTED BY THE ENGINEER TO MATCH ACTUAL FIELD CONDITIONS. DRAINAGE STRUCTURES NOT FIELD VERIFIED BY DIPRETE ENGINEERING ARE NOTED WITH AN ASTERISK (*).
- THIS CONTRACT DOES NOT PROPOSE ANY SEWER WORK UNLESS OTHERWISE NOTED. WATER WORK IS LIMITED TO RELOCATION OF ONE HYDRANT AND A WATER METER. ELECTRIC WORK IS LIMITED TO RELOCATION OF UTILITY POLES AND OVERHEAD WIRES (BY OTHERS).
- FIELD SURVEY PERFORMED BY DIPRETE ENGINEERING ON SEPTEMBER 21, 2009.
- ANY PERSON / CONTRACTOR WORKING IN THE VICINITY OF THE SUBSURFACE UTILITIES DEPICTED ON THIS PLAN IS RESPONSIBLE FOR INDEPENDENTLY VERIFYING THE SUBSURFACE CONDITIONS PRIOR TO EXCAVATION AND SHOULD NOT RELY ON THIS PLAN ALONE. THE CONTRACTOR SHALL NOTIFY DIG-SAFE A MINIMUM OF THREE DAYS PRIOR TO ANY CONSTRUCTION.
- CONTRACTOR TO OBTAIN ALL FEDERAL, STATE AND MUNICIPAL APPROVALS PRIOR TO THE START OF CONSTRUCTION.
- SILT FENCE AT LIMIT OF WORK MAY BE SUBSTITUTED WITH STAKED HAYBALES.
- ALL NEW AND EXISTING CATCH BASINS WITHIN LIMIT OF WORK SHALL BE EQUIPPED WITH A SILT SACK DURING CONSTRUCTION. FOLLOWING COMPLETION OF CONSTRUCTION ALL CATCH BASINS WITHIN LIMIT OF WORK SHALL BE CLEANED (CCB).
- OIL SEPARATORS SHALL BE INSTALLED IN ALL NEW CATCH BASINS.

As-Built Notes

- IF REQUIRED BY TOWN OF EAST GREENWICH OR RIDOT, ALL COMPONENTS OF THE DRAINAGE AND WATER SYSTEMS MUST BE AS-BUILT SURVEYED PRIOR TO FINAL COVERING. ENGINEER TO BE NOTIFIED PRIOR TO COVERING TO VERIFY AS-BUILT LOCATIONS. ENGINEER WILL NOT ACCEPT FIELD MEASUREMENTS FROM THE SITE CONTRACTOR.

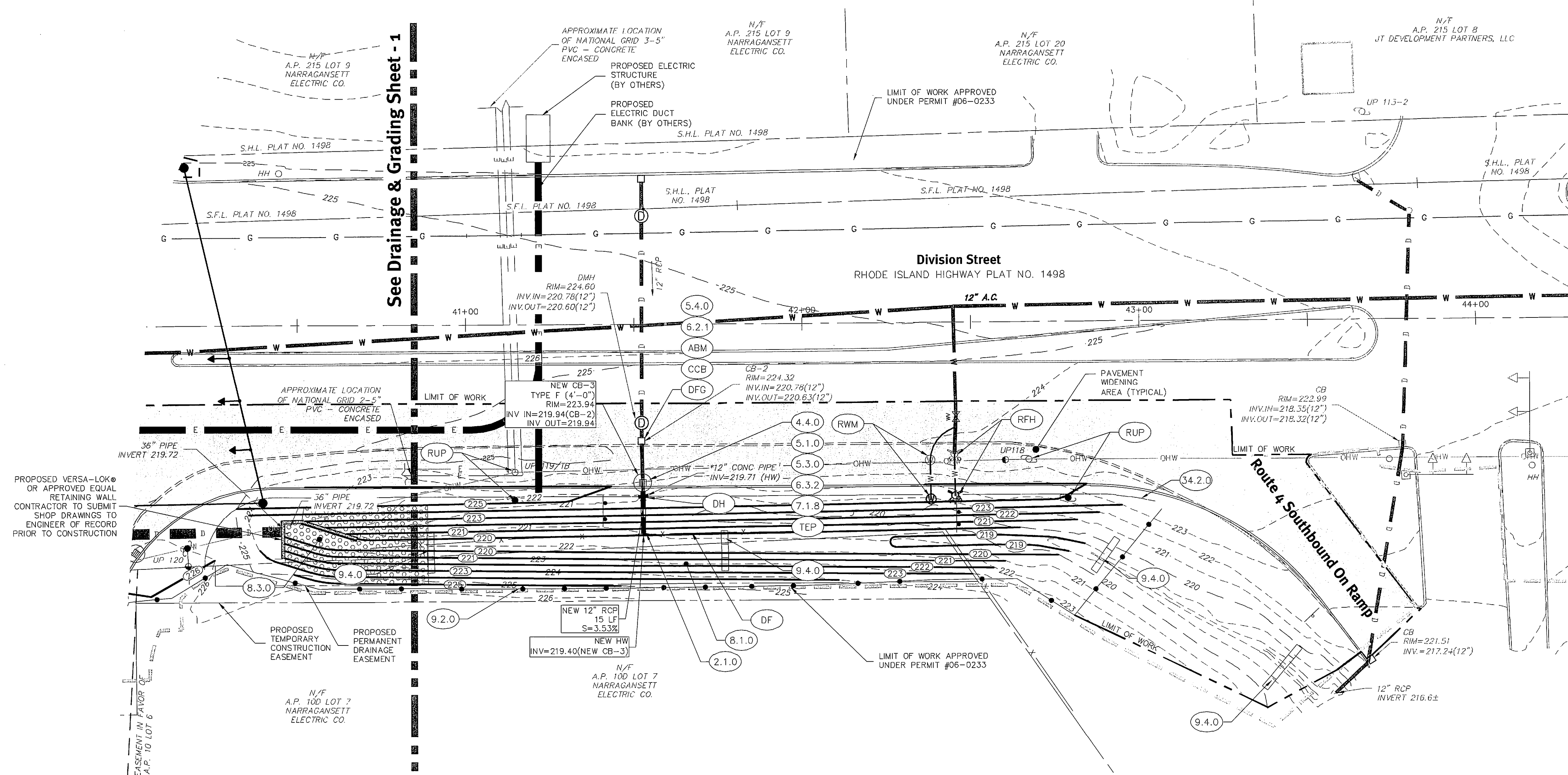
APPROVED WITH CONDITIONS
 AS SPECIFIED IN THE LETTER OF APPROVAL
 DATED JUN 18 2010 FILE # 06-0238
 NO CHANGES ALLOWED WITHOUT PRIOR APPROVAL
 APPROVED PLANS MUST BE AT CONSTRUCTION SITE

Drainage & Grading Sheet - 1
 New England Institute of Technology
 Division Street Stations 34-50 to 40-50
 East Greenwich, Rhode Island
 New England Institute of Technology
 2500 Post Road, Warwick, Rhode Island 02886
 DE Job No: 1052-004 Copyright 2009 by Diprete Engineering Associates, Inc.

NICOLE M. W. REILLY
 No. 6573
 REGISTERED PROFESSIONAL ENGINEER CIVIL

This regulatory submission set shall not be used for construction purposes unless stamped 'Issued for Construction' and signed by a Diprete Engineering representative.

NO.	DATE	DESCRIPTION	BY
1	5/14/09	Response to RIDOT Comments	SM
2	5/14/09	Response to RIDOT Comments	SM
3	5/14/09	Response to RIDOT Comments	SM



See Drainage & Grading Sheet - 1

Key Notes (Grading Sheet 1 & 2)

- (2.1.0) CONCRETE HEADWALLS FOR PIPE CULVERTS
- (4.4.0) PRECAST 4'-0", 5'-0", OR 6'-0" ROUND CATCH BASIN
- (5.1.0) PRECAST CONCRETE SUMP FOR ROUND CATCH BASINS (WET AREAS)
- (5.3.0) CATCH BASIN AND MANHOLE STEP
- (5.4.0) CONCRETE COLLARS
- (6.2.1) HEAVY-DUTY ROUND FRAME AND COVER
- (6.3.2) SQUARE FRAME AND GRATE (BICYCLE SAFE)
- (7.1.8) PRECAST CONCRETE APRON STONE (FOR ROUND CATCH BASIN)
- (8.1.0) SEEDED DITCH (2:1 SIDE SLOPES AND TURF REINFORCEMENTS MATS)
- (8.3.0) RIP-RAP DITCH
- (9.2.0) SILT FENCE
- (9.4.0) BALED HAY DITCH AND SWALE EROSION CHECK
- (ABM) ADJUST CATCH BASIN TO MANHOLE

- (CCB) CLEAN CATCH BASIN
- (AFG) ADJUST FRAME AND GRATE
- (DFG) REMOVE AND DISPOSE FRAME AND GRATE
- (DF) REMOVE AND DISPOSE FENCE
- (DH) REMOVE AND DISPOSE HEADWALL
- (NUP) NEW UTILITY POLE
- (RFH) RELOCATE AND REPLACE FIRE HYDRANT
- (RUP) RELOCATE UTILITY POLE (BY OTHERS)
- (RWM) RELOCATE AND REPLACE WATER METER
- (TEP) TIE EXISTING PIPE INTO NEW STRUCTURE
- (TNP) TIE NEW PIPE INTO EXISTING STRUCTURE

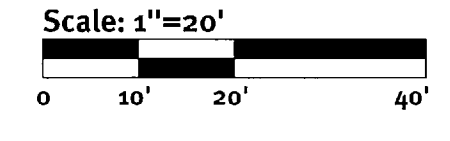
Grading Legend:

- NEW CONTOUR
- EXISTING MAJOR CONTOUR
- EXISTING MINOR CONTOUR
- EXISTING SPOT GRADE
- NEW SPOT GRADE
- STAKED HAYBALES
- LIMIT OF WORK
- NEW DRAIN LINE
- EXISTING DRAIN LINE
- NEW WATER LINE
- EXISTING WATER LINE
- RELOCATED UTILITY POLE
- EXISTING UTILITY POLE
- EXISTING OVERHEAD WIRES

- EXISTING MANHOLE
- NEW CATCH BASIN
- EXISTING CATCH BASIN
- NEW PAVEMENT AREA
- SILT FENCE
- EXISTING CURB TO BE REMOVED
- EXISTING GAS LINE

Abbreviations:

- EX EXISTING
- CB CATCH BASIN
- DMH DRAINAGE MANHOLE
- INV INVERT
- LF LINEAR FEET
- SMH SEWER MANHOLE



DEPARTMENT OF ENVIRONMENTAL MANAGEMENT
 OFFICE OF WATER RESOURCES
 FRESHWATER WETLANDS PROGRAM
 APPROVED WITH CONDITIONS
 AS SPECIFIED IN THE LETTER OF APPROVAL
 DATED JUN 18 2010 FILE # 06-0223B
 NO CHANGES ALLOWED WITHOUT PRIOR APPROVAL
 APPROVED PLANS MUST BE AT CONSTRUCTION SITE

Drainage & Grading Sheet - 2
New England Institute of Technology
 Division Street Stations 34+50 to 40+50
 East Greenwich, Rhode Island
New England Institute of Technology
 2500 Post Road, Warwick, Rhode Island 02886
 DE Job No. 1052-004 Copyright 2009 by DiPrete Engineering Associates, Inc.

NICOLE M. W. REILLY
 No. 8673
 REGISTERED
 PROFESSIONAL ENGINEER
 CIVIL

This regulatory submission set shall not be used for construction purposes unless stamped 'Issued for Construction' and signed by a DiPrete Engineering representative.

No.	Date	Description	By
0	02/16/10	RDMA Form Modification	SWG
1	02/16/10	Final Submission East of Route 2	SWG

DiPrete Engineering
 Two Stafford Court, Cranston, RI 02920
 Tel: 401-943-1000 Fax: 401-943-6006 www.DiPrete-Eng.com
Engineers - Planners - Surveyors

