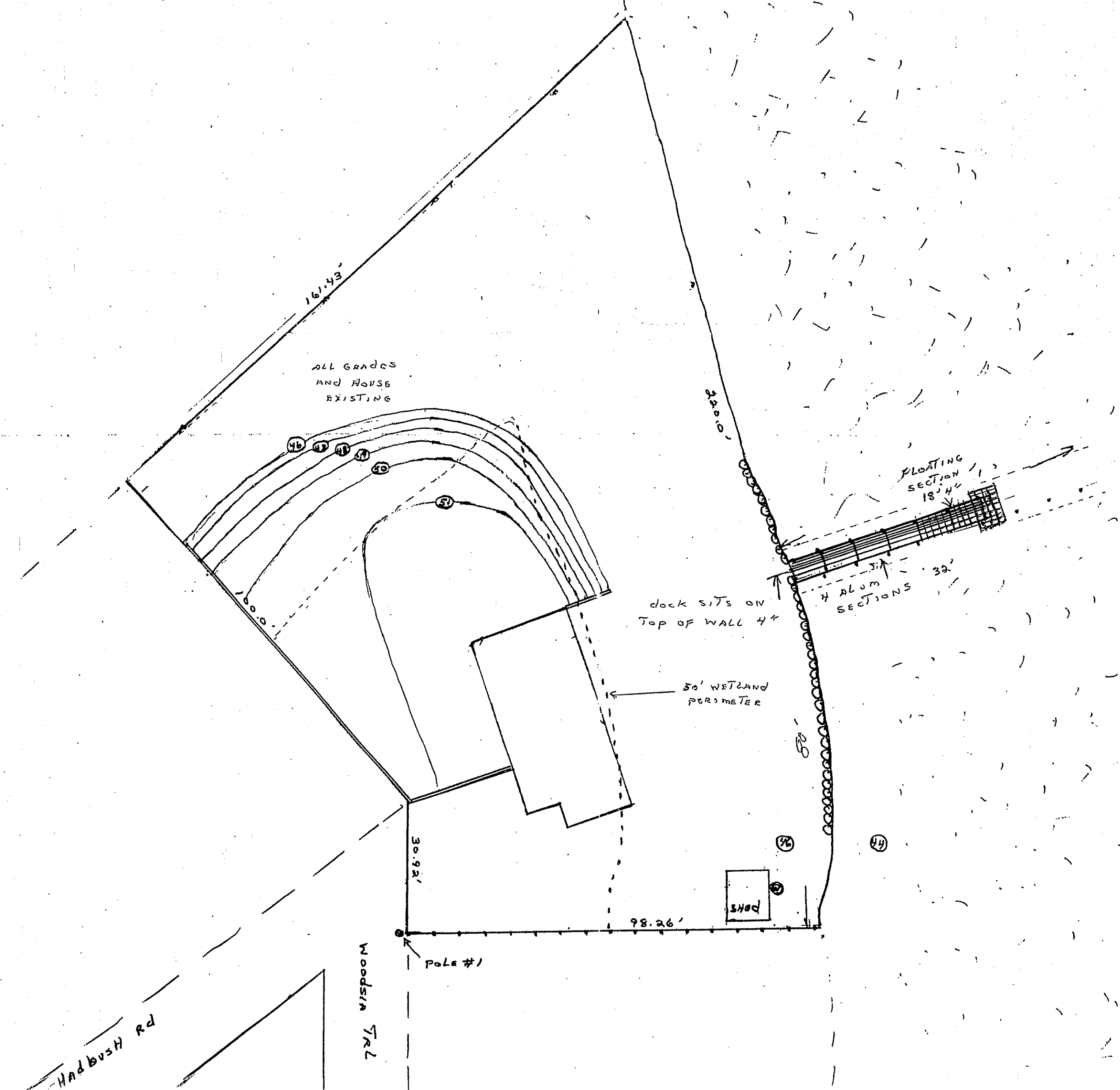


LOCATION PLAN
SCALE 1"=2000'

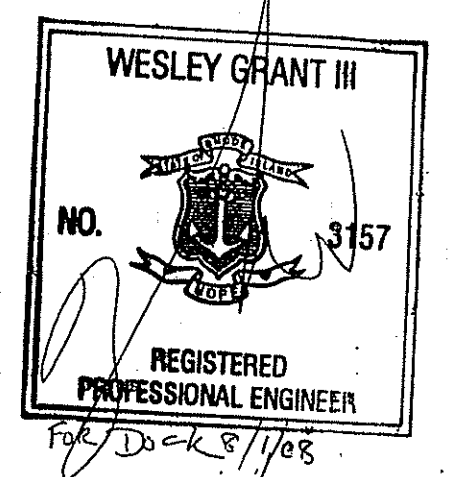
RECEIVED
AUG 1, 2009

WARDENS
POND
POND/MARSH
COMPLEX



APPENDIX 'B'
DEPARTMENT OF ENVIRONMENTAL MANAGEMENT
OFFICE OF WATER RESOURCES
FRESHWATER WETLANDS PROGRAM
APPROVED WITH CONDITIONS
AS SPECIFIED IN THE LETTER OF APPROVAL
DATED JAN 06 2009 FILE # 06-0347
NO CHANGES ALLOWED WITHOUT PRIOR APPROVAL
APPROVED PLANS MUST BE AT CONSTRUCTION SITE.

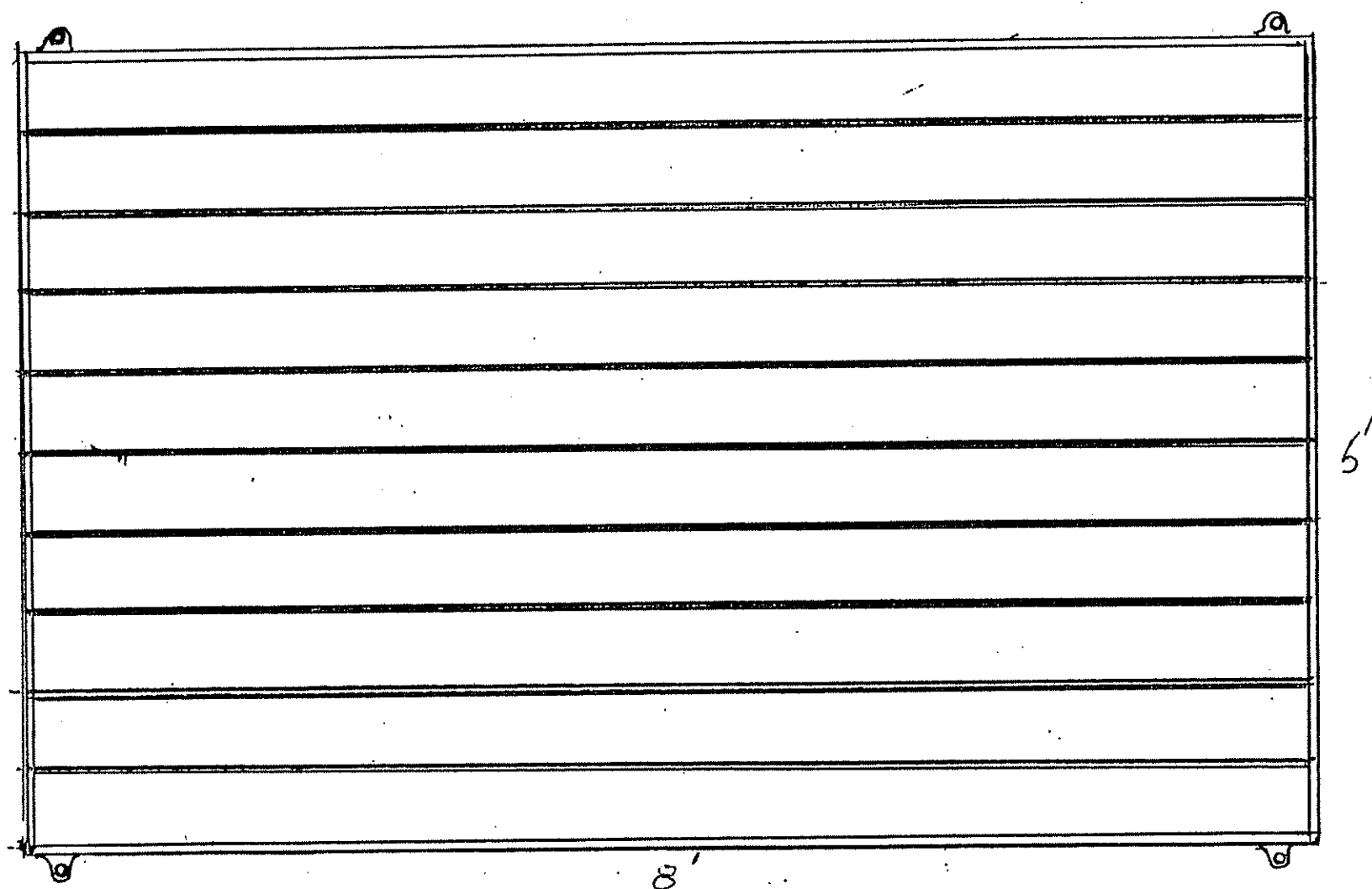
Jonathan D. Wenzel



ASSESSOR MAP 59-2 LOT 45
PAUL MCINTYRE
2 Woodsia Trail
Wakefield RI 02879
SCALE 1"=20'
10/2 REVISED 8-1-08

ALUMINUM DOCK SECTION

Top View



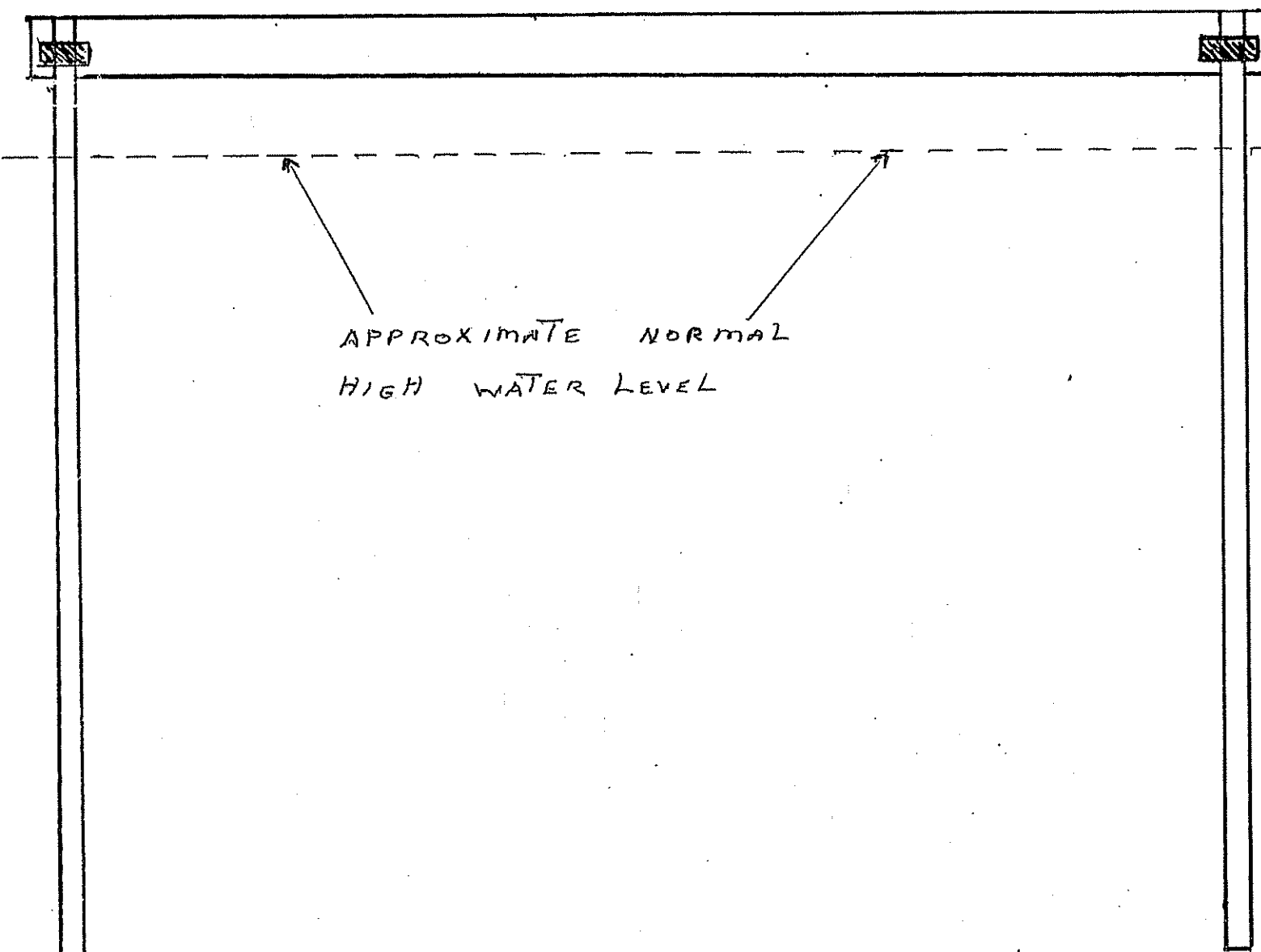
Scale
1" = 1'

Side View

LOAD 40lb/SF

8'

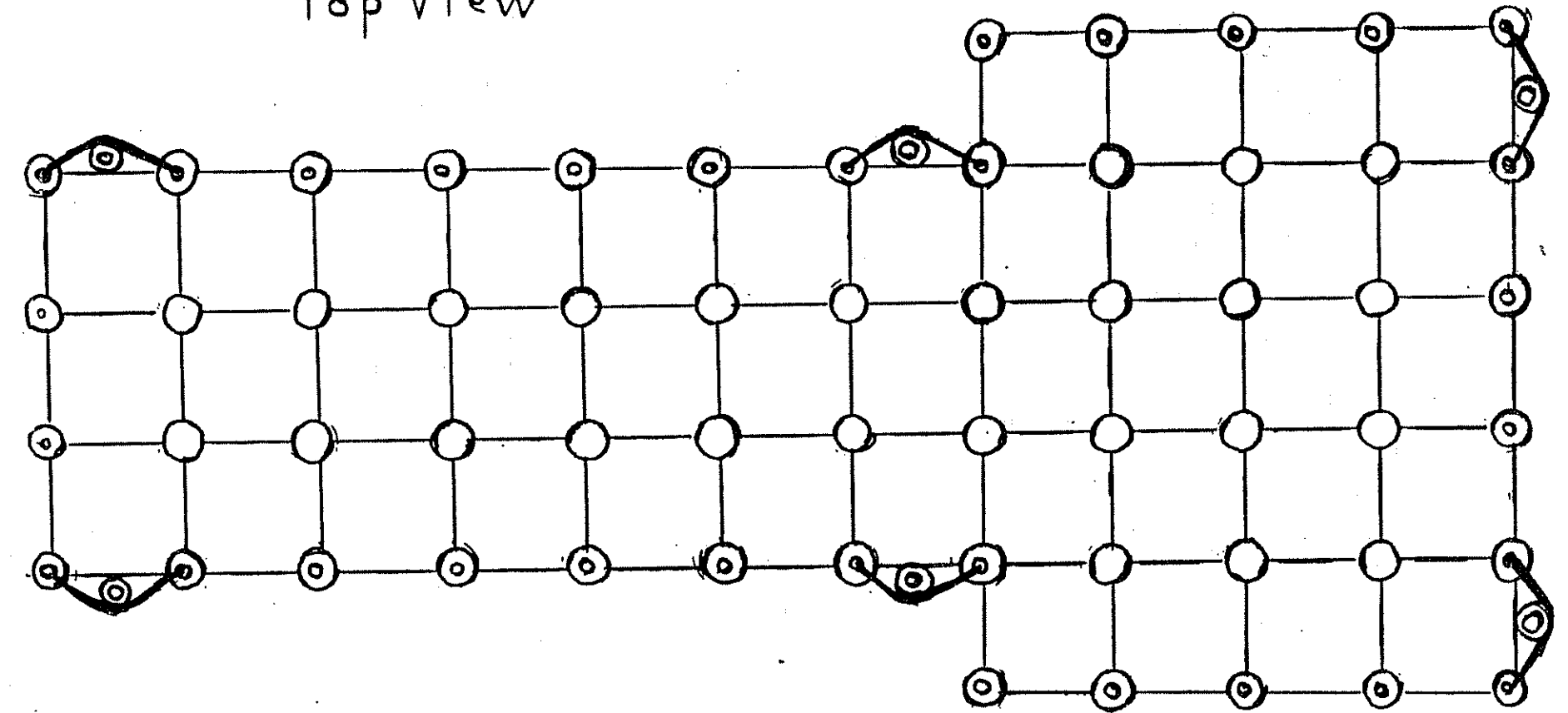
APPROXIMATE NORMAL
HIGH WATER LEVEL



20F2	PLAT 45 LOTS 18, 19, 20
	Paul McIntyre
	2 Woodsia TL Wakefield RI
	8x2" ALUMINUM POLES .125 WALL
	REVISED 8-1-08

FLOATING BLOCK SECTION

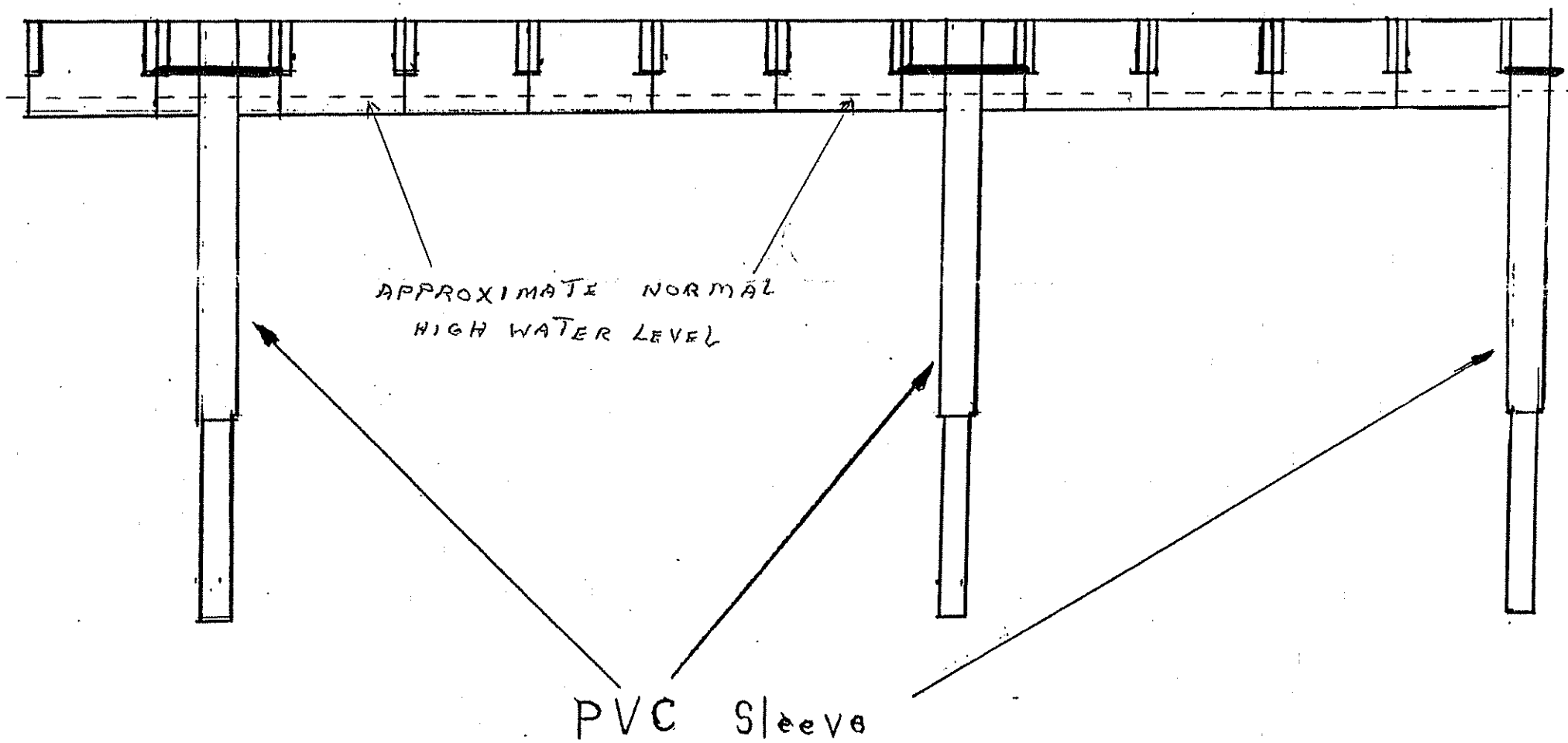
Top View



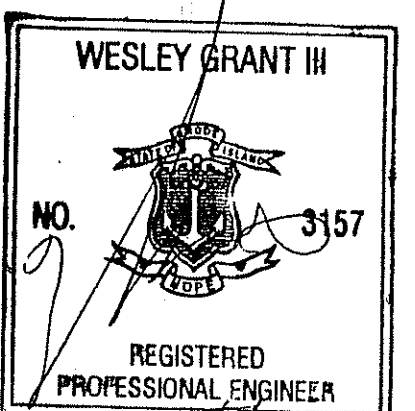
Scale
1" = 2'

Side View

AUG 1 2008



PVC SLEEVE



APPENDIX 'B'
DEPARTMENT OF ENVIRONMENTAL MANAGEMENT
OFFICE OF WATER RESOURCES
FRESHWATER WETLANDS PROGRAM
APPROVED WITH CONDITIONS
AS SPECIFIED IN THE LETTER OF APPROVAL
DATED JAN 06 2009 FILE # 06-0347
NO CHANGES ALLOWED WITHOUT PRIOR APPROVAL
APPROVED PLANS MUST BE AT CONSTRUCTION SITE.
Wesley D. Grant

20F2	Paul McIntyre
	2 Woodsia TL Wakefield RI
	8x3" ALUMINUM POLES .125 WALL
	COVERED BY 3" ID PVC PIPE
	REVISED 8-1-08
	ASSESSOR MAP 59-2 LOT 45