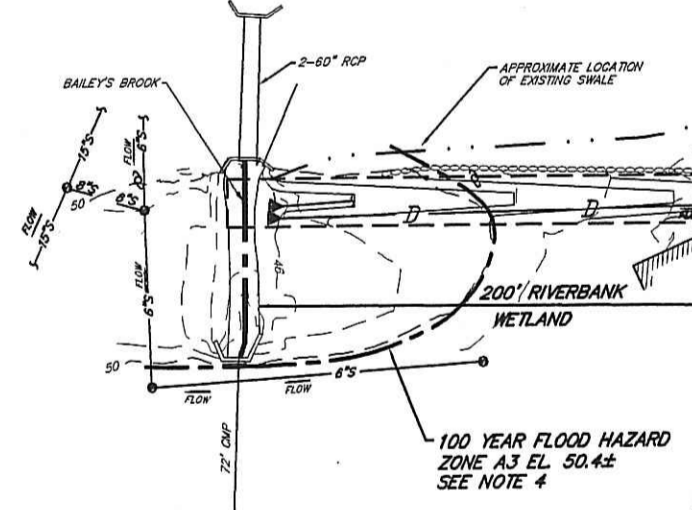
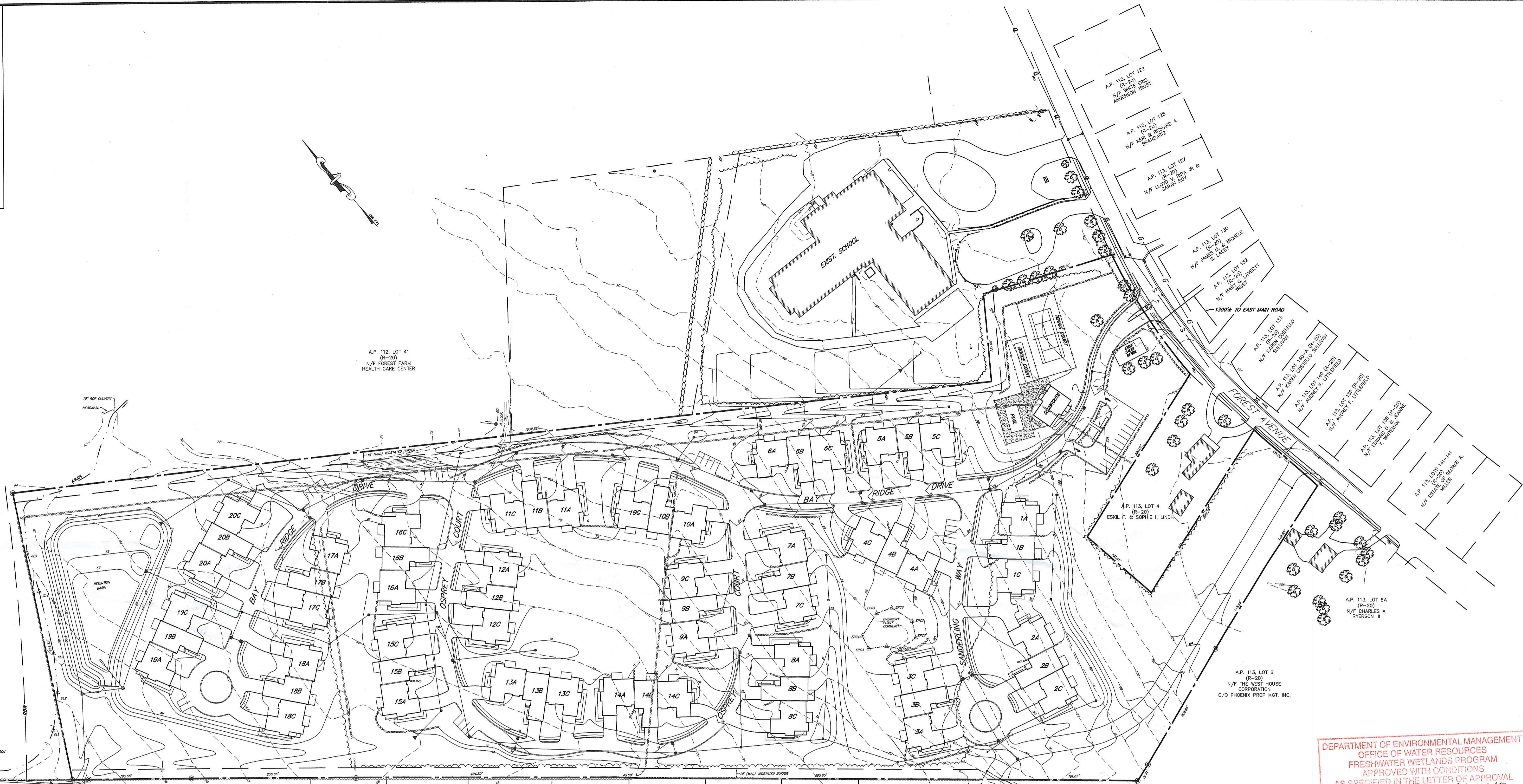


LOCUS
NOT TO SCALE



LEGEND

- 30 --- EXIST. CONTOUR
- 30 — PROP. CONTOUR
- - - - - FLAGGED WETLAND EDGE
- ○ ○ ○ ○ EXIST. STONE WALL
- ○ ○ ○ ○ PROP. STONE WALL
- ~ ~ ~ ~ ~ EXIST. TREE LINE
- ☼ ☼ EXIST. TREES
- D — DRAIN LINE
- W — WATER LINE
- G — GAS LINE
- E — ELECTRIC LINE
- S — SEWER LINE
- --- LIMIT OF DISTURBANCE
- x x x x x BALED HAY EROSION CHECK

GENERAL NOTES

1. PROPERTY LINES, EXISTING TOPOGRAPHY AND EXISTING UTILITY INFORMATION TAKEN FROM PLANS BY NORTHEAST ENGINEERS AND CONSULTANTS, INC. SUPPLEMENTAL INFORMATION PROVIDED BY SOUTHADE SURVEYS, INC.
2. WETLANDS EDGE DELINEATED BY NATURAL RESOURCE SERVICES, INC.
3. TOPOGRAPHIC ELEVATIONS ON THESE PLANS ARE ON AN ASSUMED DATUM. ADD 48.57' TO CONVERT TO NGVD29 DATUM.
4. THE SITE IS PRIMARILY WITHIN FLOOD HAZARD ZONE C PER FEMA FIRM 445401-0002D. THERE IS A 100 YEAR FLOOD HAZARD ZONE A7 ASSOCIATED WITH BAILEY'S BROOK NGVD29 EL.=99 (SITE DATUM EL.=50.4±).
5. SITE SOILS ARE PITTSFORD SILT LOAM (PmA & PmB) PER THE R.I. SOIL SURVEY.
6. SITE CONSTRUCTION SHALL COMPLY WITH THE REQUIREMENTS OF THE D.E.M. WETLAND PERMIT NO. 06-0348.
7. SITE DEVELOPMENT SHALL COMPLY WITH THE REQUIREMENTS OF ALL TOWN ORDINANCES AND APPROVALS.
8. EXISTING INTERNAL STONE WALLS REMOVED SHALL BE STOCKPILED FOR CONSTRUCTION OF NEW WALLS. TOTAL POST DEVELOPMENT INTERNAL WALL LENGTH SHALL BE 2660 LINEAL FEET.
9. LOCATIONS AND SIZES OF EXISTING UTILITIES IS PLOTTED FROM BEST AVAILABLE INFORMATION. THE CONTRACTOR SHALL VERIFY ALL INFORMATION WITH THE APPROPRIATE UTILITY AUTHORITY AND DIG SAFE PRIOR TO ANY CONSTRUCTION OR EXCAVATION.

SHEET INDEX

SHT. NO.	DESCRIPTION
1	OVERALL PLAN
2	GRADING PLAN - 1
3	GRADING PLAN - 2
4	UTILITY PLAN - 1
5	UTILITY PLAN - 2
6	PLAN & PROFILE - 1
7	PLAN & PROFILE - 2
8	TEMPORARY SEDIMENT BASIN
9	DRAINAGE NOTES & DETAILS
10	CONSTRUCTION NOTES & DETAILS 1
11	CONSTRUCTION NOTES & DETAILS 2

DEPARTMENT OF ENVIRONMENTAL MANAGEMENT
OFFICE OF WATER RESOURCES
FRESHWATER WETLANDS PROGRAM
APPROVED WITH CONDITIONS
AS SPECIFIED IN THE LETTER OF APPROVAL
DATED DEC 03 2007. FILE # 06-0348
NO CHANGES ALLOWED WITHOUT PRIOR APPROVAL
APPROVED PLANS MUST BE AT CONSTRUCTION SITE

Charles H. Moorehead

NOV 21 2007

OWNER
FRANKLIN SIMON, TRUSTEE
LOVE REALTY TRUST II
639 GRANITE STREET
BRAINTREE, MA. 02184

D.E.M. WETLAND PERMIT MODIFICATION SUBMISSION
PERMIT NO. 06-0348

THE RESIDENCES AT BAY RIDGE
ASSESSOR'S PLAT 113 LOT 3
MIDDLETOWN, RHODE ISLAND

PREPARED FOR:
BAY RIDGE DEVELOPMENT CORP.
64 FERRY LANDING CIRCLE
PORTSMOUTH, R.I. 02871

OVERALL SITE PLAN

SCOTT F. MOOREHEAD
REGISTERED PROFESSIONAL ENGINEER
No. 4298

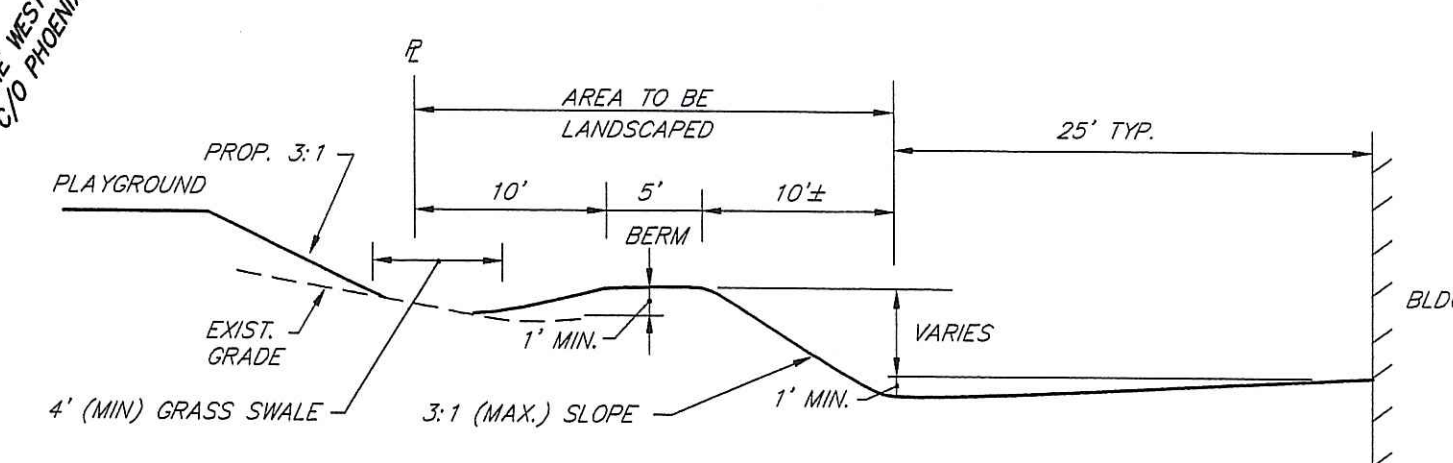
DATE	REVISION
9-4-07	TOWN SUBMISSION
9-12-07	D.E.M. WETLANDS
11-5-07	F.W.W. COMMENTS

DWN. BY: LBC DWG. NO. SFM696SP2C
S.F.M. ENGINEERING ASSOCIATES
410 TIOGUE AVENUE
COVENTRY, R.I. 02816
(401)826-3736

SCOTT F. MOOREHEAD
REGISTERED PROFESSIONAL LAND SURVEYOR
No. 1734

TOPOGRAPHIC INFORMATION ON THESE PLANS WAS COMPILED FROM ON THE GROUND AND AERIAL PHOTOGRAMMETRIC SURVEYS AND CONFORMS TO A CLASS III STANDARD AS ADOPTED BY THE R.I. BOARD OF REGISTRATION FOR PROFESSIONAL LAND SURVEYORS.
BY: *Scott F. Moorehead* 11-5-07 DATE
SCOTT F. MOOREHEAD P.L.S. 1734

SFM



DEPARTMENT OF ENVIRONMENTAL MANAGEMENT
 OFFICE OF WATER RESOURCES
 FRESHWATER WETLANDS PROGRAM
 APPROVED WITH CONDITIONS
 AS SPECIFIED IN THE LETTER OF APPROVAL
 DATED DEC 03 2007 FILE # 06-0548
 NO CHANGES ALLOWED WITHOUT PRIOR APPROVAL
 APPROVED PLANS MUST BE AT CONSTRUCTION SITE

NOV 21 2007

SEE SHEET 4 FOR BUILDING ELEVATIONS AND DRAINAGE INFORMATION

A.P. 107NE LOT 310 (R-20) N/F JAY F. & RUTH LYNN BUTLER	A.P. 107NE LOT 309 (R-20) N/F LARRY J. SILVA	A.P. 107NE LOT 308 (R-20) N/F JAMES E. & MARY ANNE MANLEY	A.P. 107NE LOT 307 (R-20) N/F PATRICIA A. RAPOSA	A.P. 107NE LOT 306 (R-20) N/F FRANCES A. COULTER	A.P. 107NE LOT 305 (R-20) N/F BEVERLY KRAMER
--	---	--	---	---	---

SCOTT F. MOOREHEAD
 REGISTERED PROFESSIONAL ENGINEER
 4298

DATE	REVISION
9-4-07	TOWN SUBMISSION
9-12-07	D.E.M. WETLANDS
11-5-07	F.W.K. COMMENTS

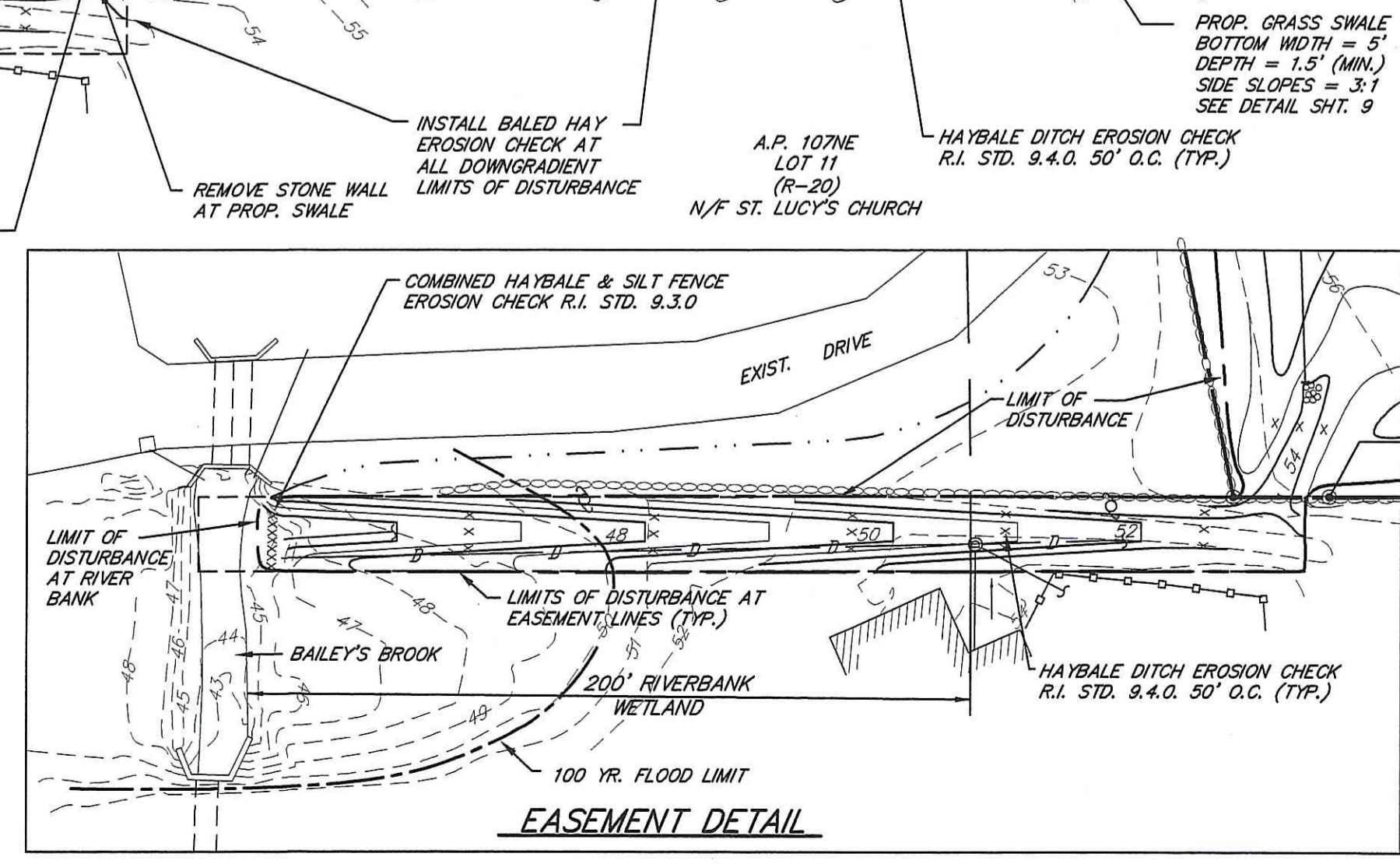
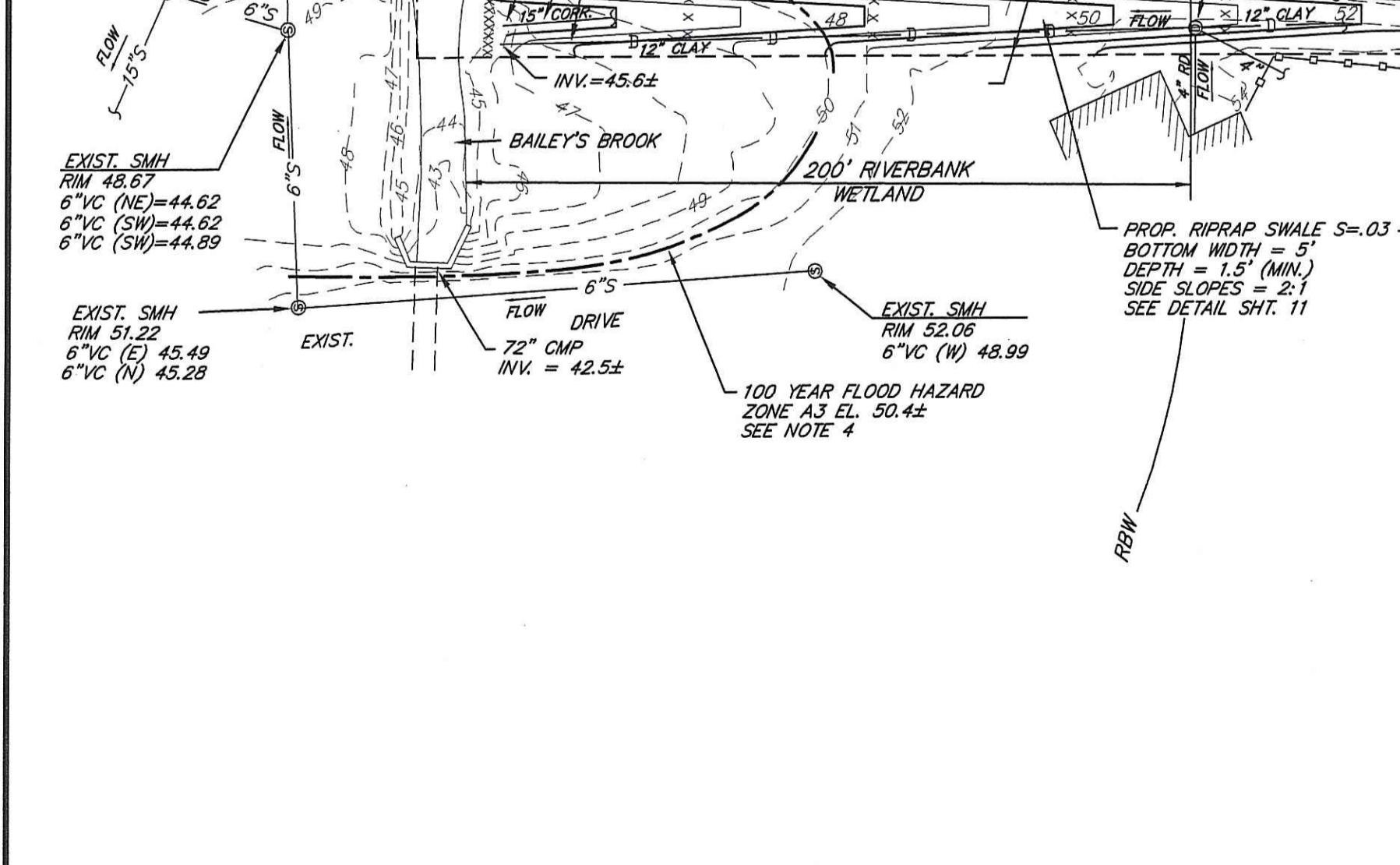
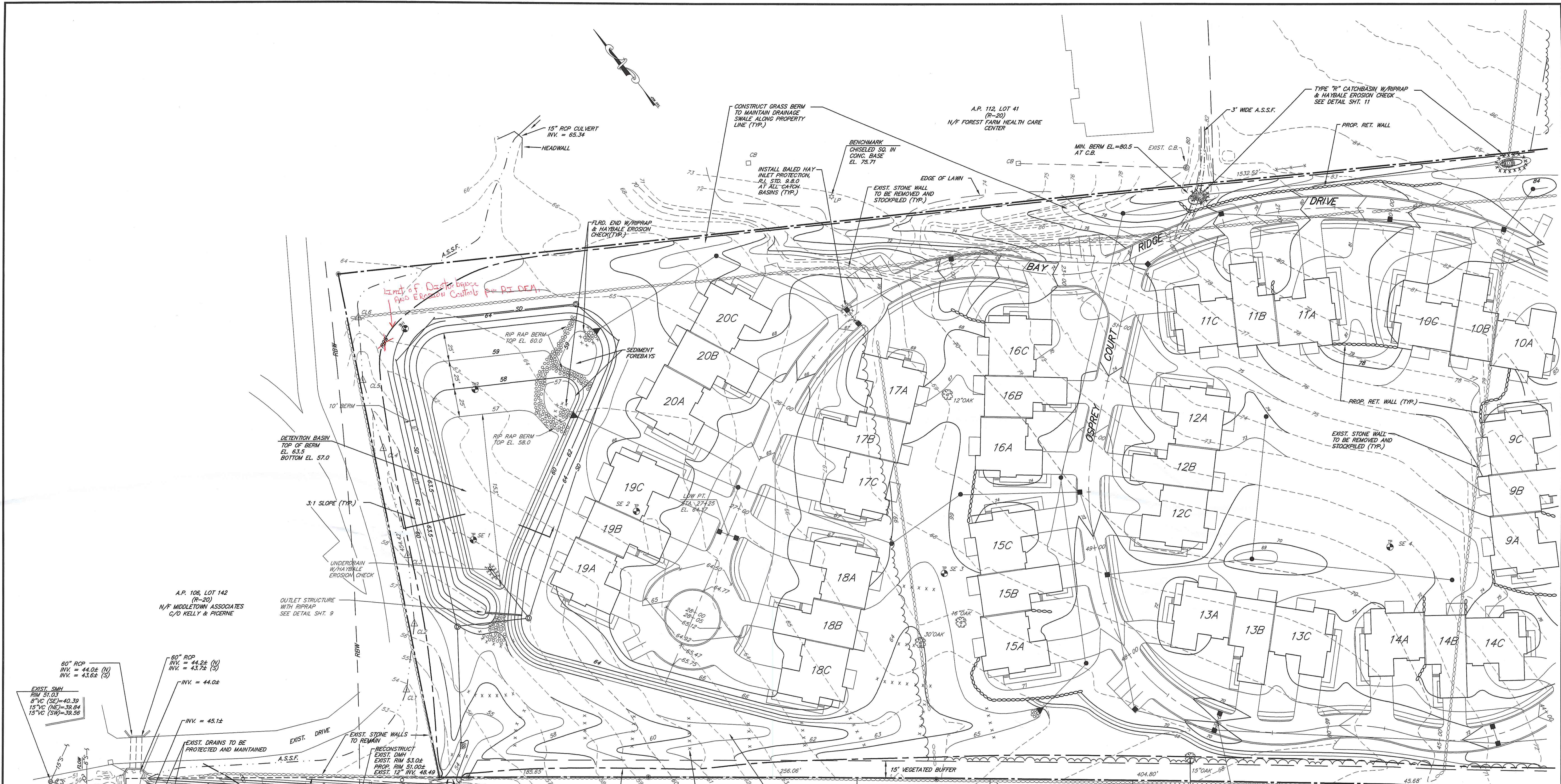
DWN. BY: LBC DWG. NO. SFM696GP-18

SFM

S.F.M. ENGINEERING ASSOCIATES
 410 TIGUE AVENUE
 COVENTRY, R.I. 02816
 (401)826-3736

THE RESIDENCES AT BAY RIDGE
 ASSESSOR'S PLAT 113 LOT 3
 MIDDLETOWN, RHODE ISLAND
 PREPARED FOR:
 BAY RIDGE DEVELOPMENT CORP.
 64 FERRY LANDING CIRCLE
 PORTSMOUTH, R.I. 02871

GRADING PLAN -1
 DATE: AUG. 20, 2007 SCALE: 1"= 40' SHEET 2 OF 11



NOTES:

- SEE SHEET 4 FOR BUILDING ELEVATIONS.
- SEE SHEET 8 FOR TEMPORARY SEDIMENT BASIN DETAIL.
- SEE SHEET 9 FOR DETENTION BASIN DETAILS.
- SEE SHEET 5 FOR DRAINAGE ELEVATIONS.

DEPARTMENT OF ENVIRONMENTAL MANAGEMENT
FRESHWATER WETLANDS PROGRAM
 APPROVED WITH CONDITIONS
 AS SPECIFIED IN THE LETTER OF APPROVAL
 DATED DEC. 03 2007 FILE # 0610298
 NO CHANGES ALLOWED WITHOUT PRIOR APPROVAL
 APPROVED PLANS MUST BE AT CONSTRUCTION SITE

NOV 21 2007

DATE	REVISION
9-4-07	TOWN SUBMISSION
9-12-07	D.E.M. WETLANDS
11-5-07	F.W.W. COMMENTS

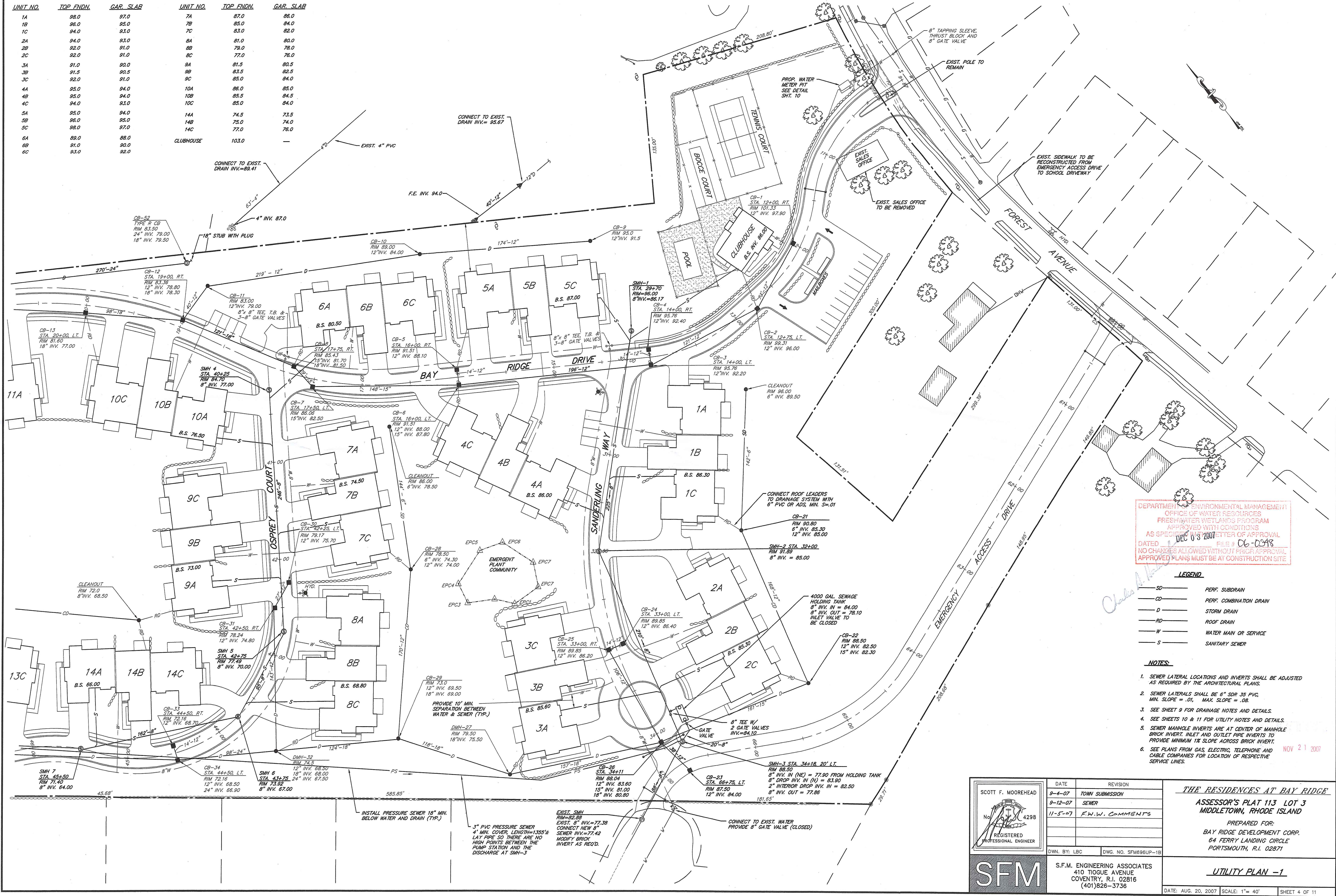
THE RESIDENCES AT BAY RIDGE
 ASSESSOR'S PLAT 113 LOT 3
 MIDDLETOWN, RHODE ISLAND

PREPARED FOR:
 BAY RIDGE DEVELOPMENT CORP.
 64 FERRY LANDING CIRCLE
 PORTSMOUTH, R.I. 02871

S.F.M. S.F.M. ENGINEERING ASSOCIATES
 410 TIGUE AVENUE
 COVENTRY, R.I. 02816
 (401)826-3736

DATE: AUG. 20, 2007 SCALE: 1"= 40' SHEET 3 OF 11

UNIT NO.	TOP FINDN.	GAR. SLAB	UNIT NO.	TOP FINDN.	GAR. SLAB
1A	98.0	97.0	7A	87.0	86.0
1B	98.0	97.0	7B	85.0	84.0
1C	94.0	93.0	7C	83.0	82.0
2A	94.0	93.0	8A	81.0	80.0
2B	92.0	91.0	8B	79.0	78.0
2C	92.0	91.0	8C	77.0	76.0
3A	91.0	90.0	9A	81.5	80.5
3B	91.5	90.5	9B	83.5	82.5
3C	92.0	91.0	9C	85.0	84.0
4A	95.0	94.0	10A	86.0	85.0
4B	95.0	94.0	10B	85.5	84.5
4C	94.0	93.0	10C	85.0	84.0
5A	95.0	94.0	14A	74.5	73.5
5B	96.0	95.0	14B	75.0	74.0
5C	98.0	97.0	14C	77.0	76.0
6A	88.0	88.0	CLUBHOUSE	103.0	-
6B	91.0	90.0			
6C	93.0	92.0			

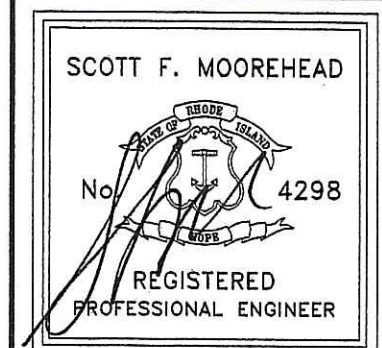


DEPARTMENT OF ENVIRONMENTAL MANAGEMENT
 OFFICE OF WATER RESOURCES
 FRESHWATER WETLANDS PROGRAM
 APPROVED WITH CONDITIONS
 AS SPECIFIED IN LETTER OF APPROVAL
 DATED DEC 03 2007 FILE # 06-0348
 NO CHANGES ALLOWED WITHOUT PRIOR APPROVAL
 APPROVED PLANS MUST BE AT CONSTRUCTION SITE

LEGEND

SD	PERF. SUBDRAIN
CD	PERF. COMBINATION DRAIN
D	STORM DRAIN
RD	ROOF DRAIN
W	WATER MAIN OR SERVICE
S	SANITARY SEWER

- NOTES**
- SEWER LATERAL LOCATIONS AND INVERTS SHALL BE ADJUSTED AS REQUIRED BY THE ARCHITECTURAL PLANS.
 - SEWER LATERALS SHALL BE 6" SDR 35 PVC, MIN. SLOPE = .01, MAX. SLOPE = .08.
 - SEE SHEET 9 FOR DRAINAGE NOTES AND DETAILS.
 - SEE SHEETS 10 & 11 FOR UTILITY NOTES AND DETAILS.
 - SEWER MANHOLE INVERTS ARE AT CENTER OF MANHOLE BRICK INVERT. INLET AND OUTLET PIPE INVERTS TO PROVIDE MINIMUM 1% SLOPE ACROSS BRICK INVERT.
 - SEE PLANS FOR GAS, ELECTRIC, TELEPHONE AND CABLE COMPANIES FOR LOCATION OF RESPECTIVE SERVICE LINES.



DATE	REVISION
9-4-07	TOWN SUBMISSION
9-12-07	SEWER
11-5-07	F.W.W. COMMENTS

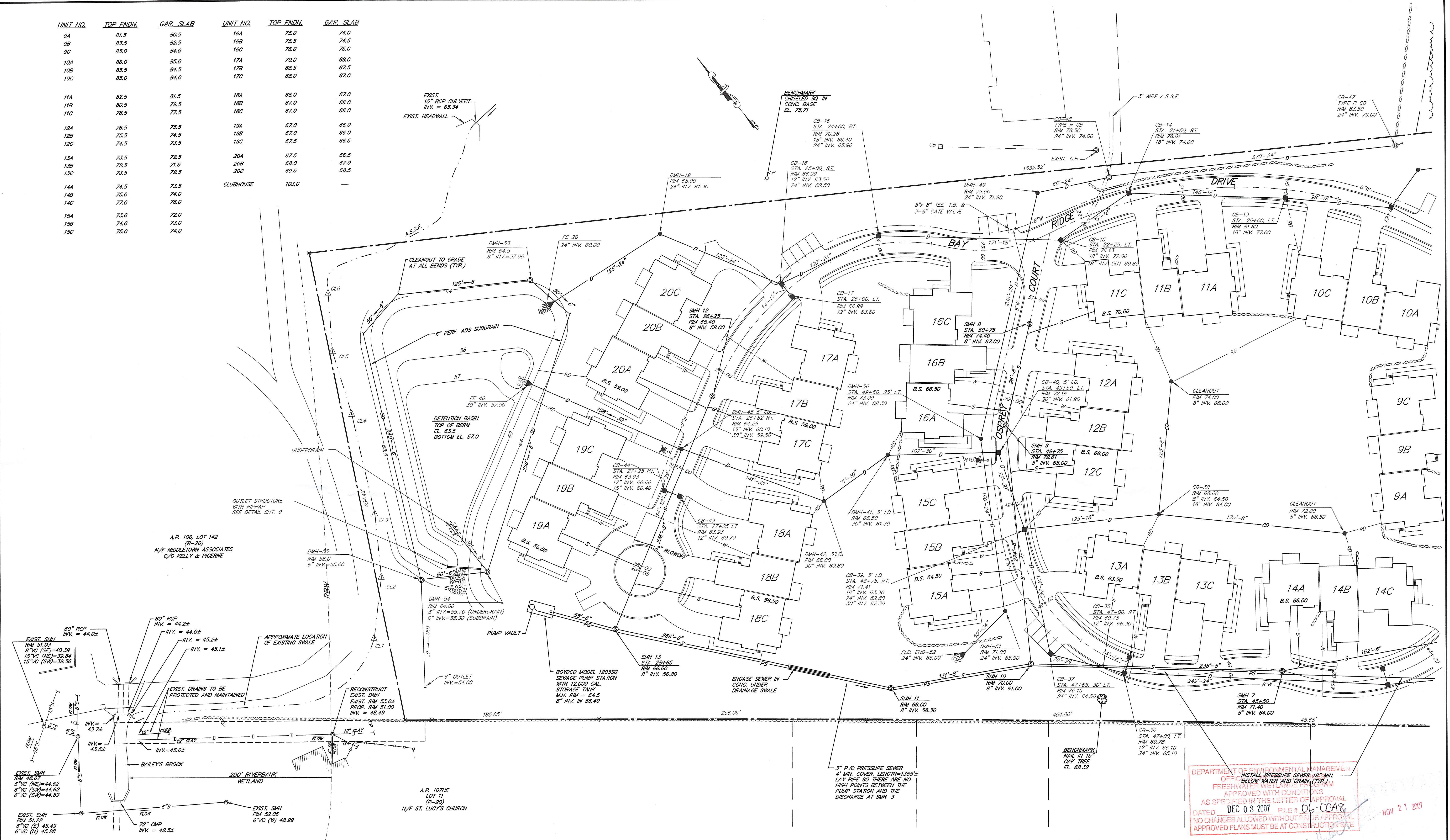
THE RESIDENCES AT BAY RIDGE
 ASSESSOR'S PLAT 113 LOT 3
 MIDDLETOWN, RHODE ISLAND
 PREPARED FOR:
 BAY RIDGE DEVELOPMENT CORP.
 64 FERRY LANDING CIRCLE
 PORTSMOUTH, R.I. 02871

SFM

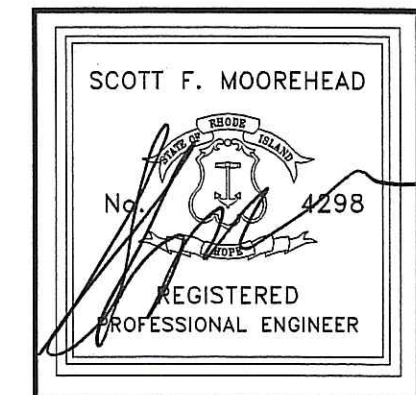
S.F.M. ENGINEERING ASSOCIATES
 410 TIGUE AVENUE
 COVENTRY, R.I. 02816
 (401)826-3736

UTILITY PLAN -1

UNIT NO.	TOP FNDN.	GAR. SLAB	UNIT NO.	TOP FNDN.	GAR. SLAB
9A	81.5	80.5	16A	75.0	74.0
9B	83.5	82.5	16B	75.5	74.5
9C	85.0	84.0	16C	76.0	75.0
10A	86.0	85.0	17A	70.0	69.0
10B	85.5	84.5	17B	68.5	67.5
10C	85.0	84.0	17C	68.0	67.0
11A	82.5	81.5	18A	68.0	67.0
11B	80.5	79.5	18B	67.0	66.0
11C	78.5	77.5	18C	67.0	66.0
12A	76.5	75.5	19A	67.0	66.0
12B	75.5	74.5	19B	67.0	66.0
12C	74.5	73.5	19C	67.5	66.5
13A	73.5	72.5	20A	67.5	66.5
13B	72.5	71.5	20B	68.0	67.0
13C	73.5	72.5	20C	68.5	67.5
14A	74.5	73.5	CLUBHOUSE	103.0	-
14B	75.0	74.0			
14C	77.0	76.0			
15A	73.0	72.0			
15B	74.0	73.0			
15C	75.0	74.0			



DEPARTMENT OF ENVIRONMENTAL MANAGEMENT
OFFICE INSTALL PRESSURE SEWER 18" MIN. BELOW WETLANDS PER PROGRAM APPROVED WITH CONDITIONS AS SPECIFIED IN THE LETTER OF APPROVAL DATED DEC 03 2007 FILE # 06-0348
NOV 21 2007



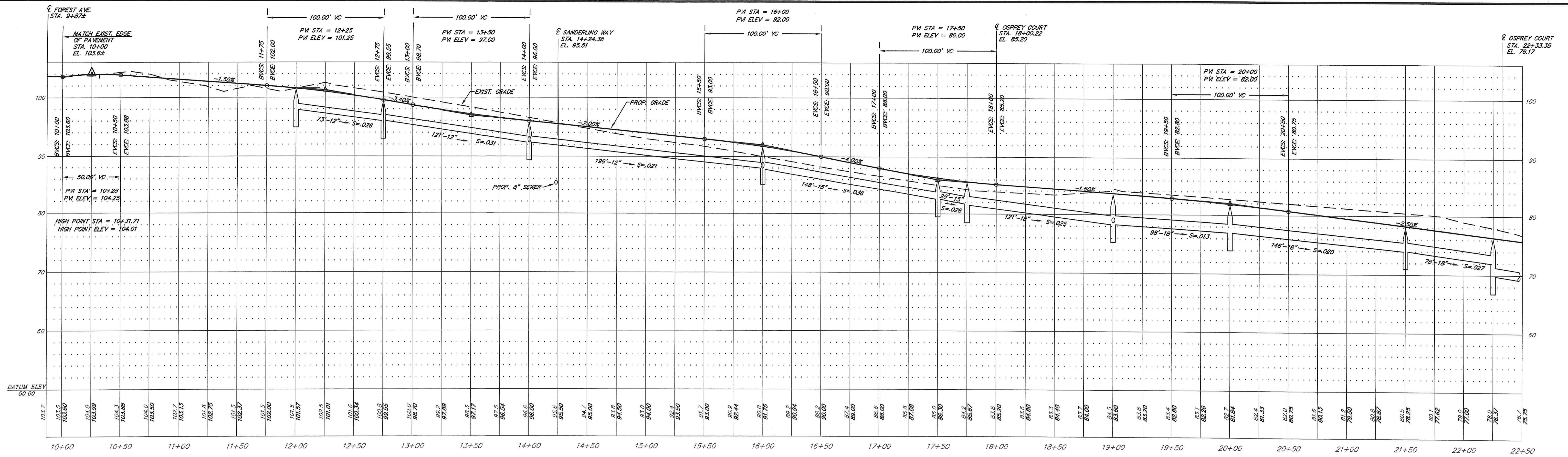
DATE	REVISION
9-4-07	TOWN SUBMISSION
9-12-07	SEWER
11-5-07	F.I.W.V. COMMENTS

THE RESIDENCES AT BAY RIDGE
ASSESSOR'S PLAT 113 LOT 3
MIDDLETOWN, RHODE ISLAND
PREPARED FOR:
BAY RIDGE DEVELOPMENT CORP.
64 FERRY LANDING CIRCLE
PORTSMOUTH, R.I. 02871

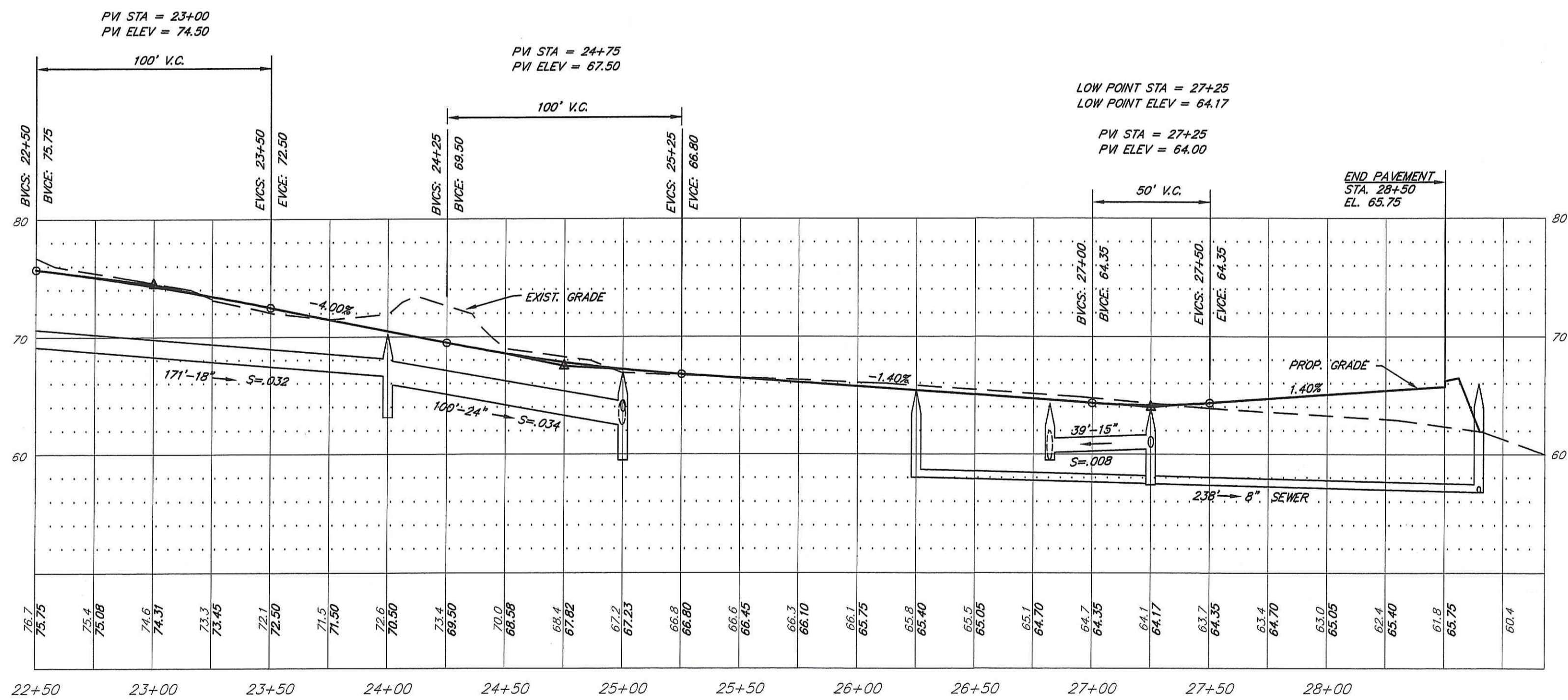


S.F.M. ENGINEERING ASSOCIATES
410 TIOGUE AVENUE
COVENTRY, R.I. 02816
(401)826-3736

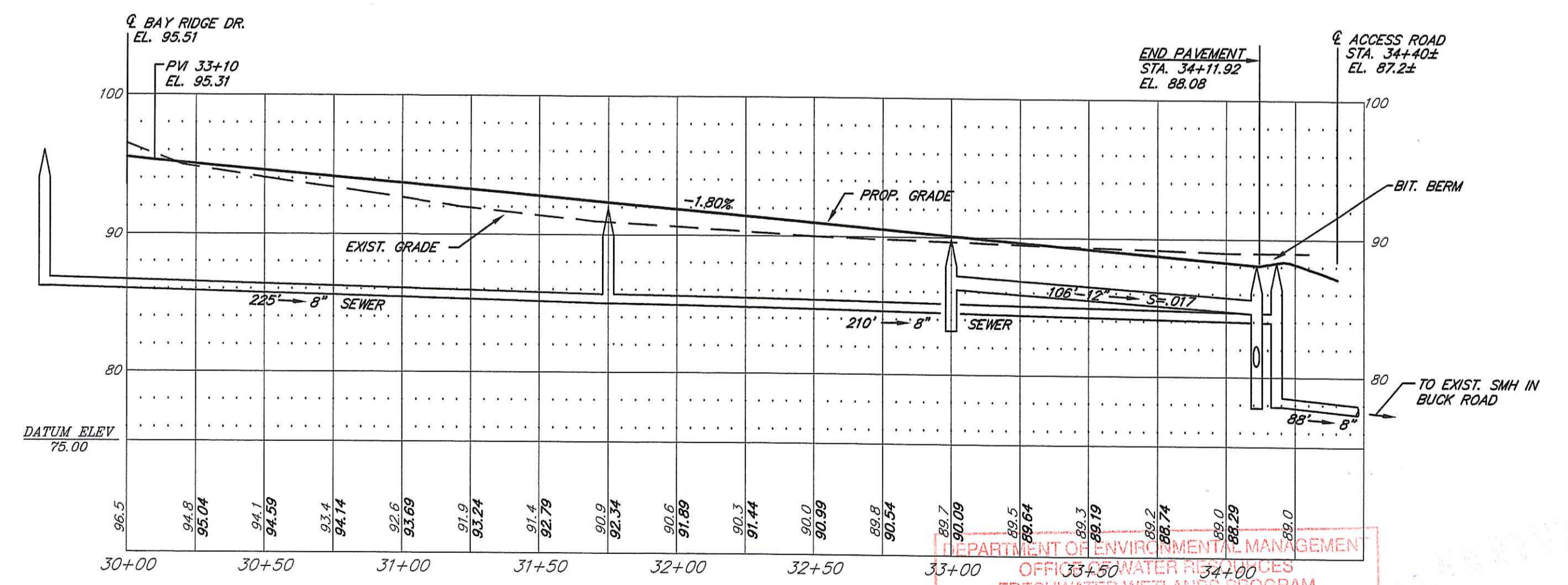
UTILITY PLAN - 2
DATE: AUG. 20, 2007 SCALE: 1"= 40' SHEET 5 OF 11



BAY RIDGE DRIVE
 SCALE: HOR. 1" = 40'
 VERT. 1" = 8'



BAY RIDGE DRIVE
 SCALE: HOR. 1" = 40'
 VERT. 1" = 8'

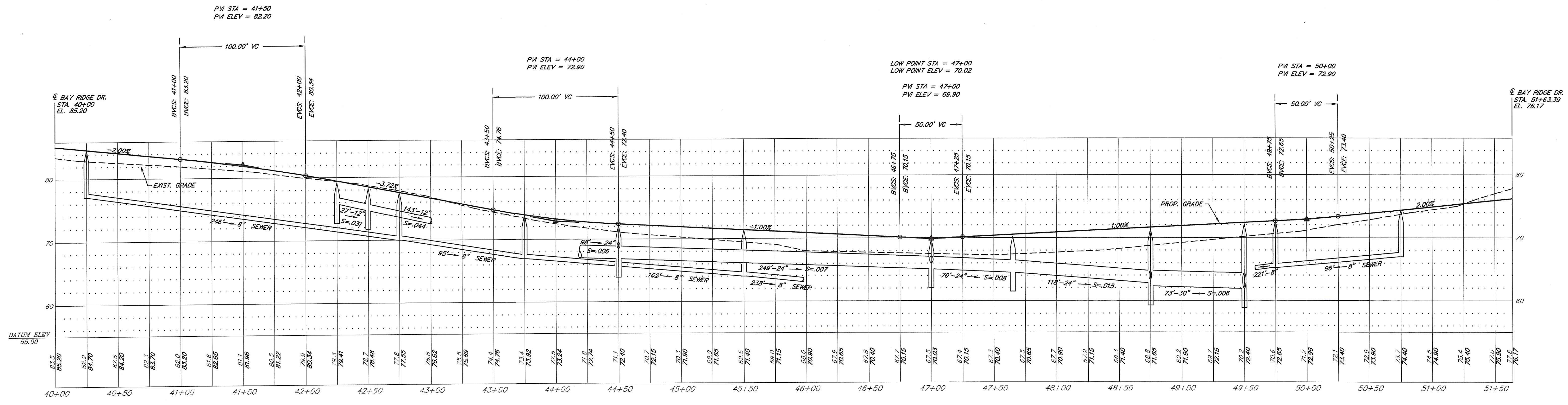


SANDERLING WAY
 SCALE: HOR. 1" = 40'
 VERT. 1" = 8'

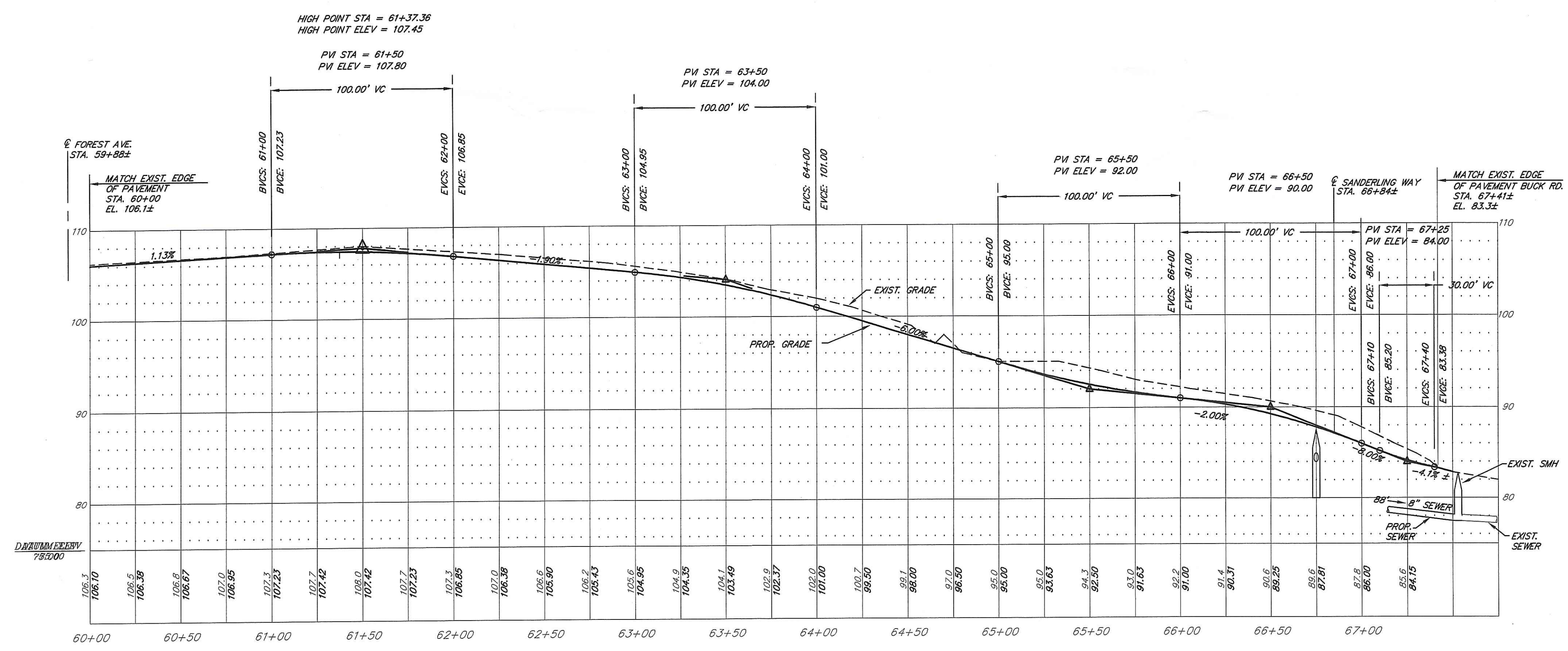
DEPARTMENT OF ENVIRONMENT & PLANNING
 OFFICE OF WATER RESOURCES
 FRESHWATER WETLANDS PROGRAM
 APPROVED WITH CONDITIONS
 AS SPECIFIED IN THE LETTER OF APPROVAL
 DATED DEC 03 2007 FILE # 06-0248
 NO CHANGES ALLOWED WITHOUT PRIOR APPROVAL!
 APPROVED PLANS MUST BE AT CONSTRUCTION SITE

NOV 21 2007

	DATE	REVISION	THE RESIDENCES AT BAY RIDGE ASSESSOR'S PLAT 113 LOT 3 MIDDLETOWN, RHODE ISLAND PREPARED FOR: BAY RIDGE DEVELOPMENT CORP. 64 FERRY LANDING CIRCLE PORTSMOUTH, R.I. 02871 DRIVEWAY PROFILES - 1
	9-4-07	TOWN SUBMISSION	
	8-12-07	TOWN SUBMISSION	
	11-5-07	F.W.W. COMMENTS	
DWN. BY: LBC		DWG. NO. SFM696PPIA	S.F.M. ENGINEERING ASSOCIATES 410 TIOGUE AVENUE COVENTRY, R.I. 02816 (401)826-3736
		DATE: AUG. 20, 2007 SCALE: AS NOTED SHEET 6 OF 11	



OSPREY COURT
 SCALE: HOR. 1" = 40'
 VERT. 1" = 8'

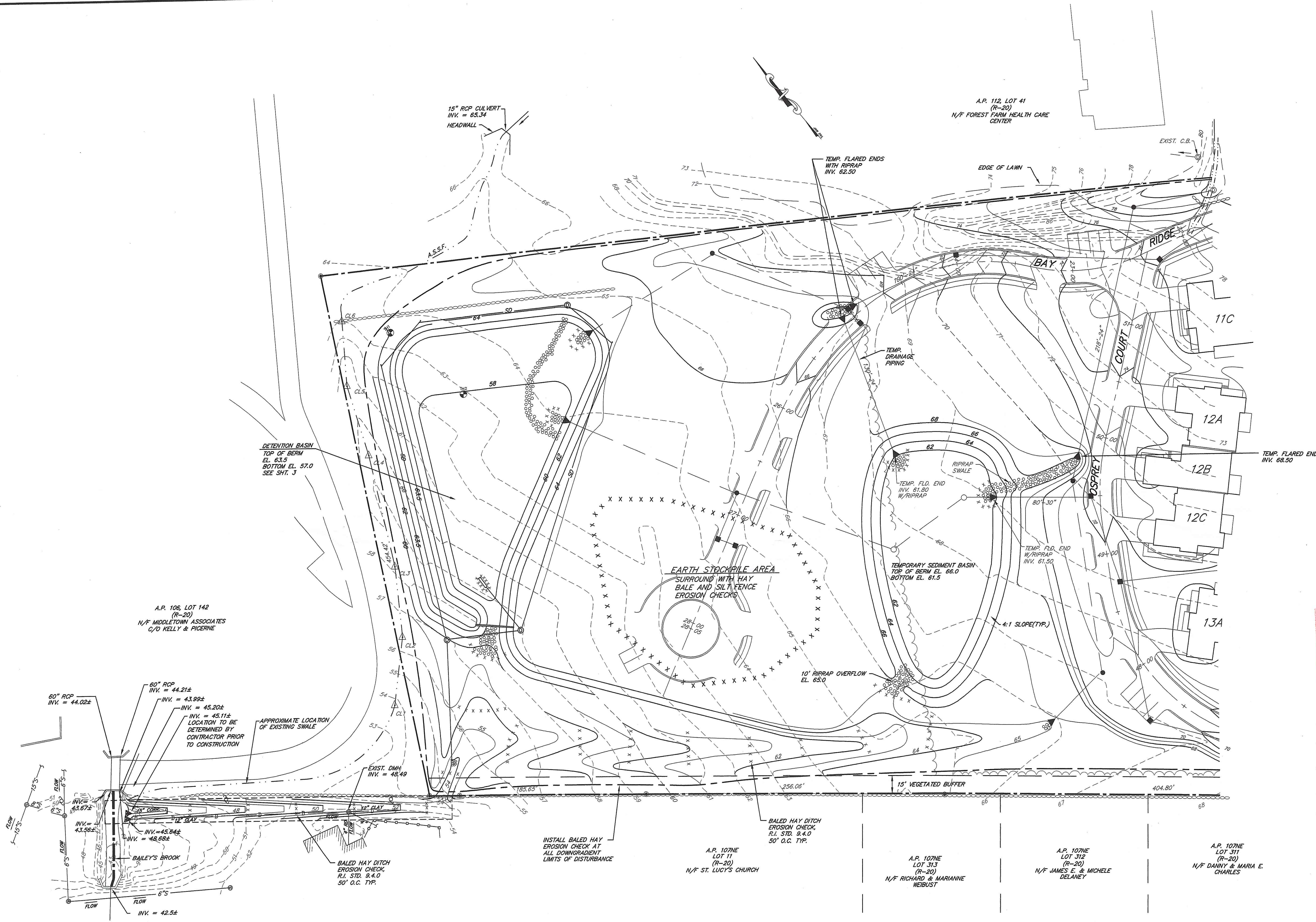


EMERGENCY ACCESS ROAD
 SCALE: HOR. 1" = 40'
 VERT. 1" = 8'

DEPARTMENT OF ENVIRONMENTAL MANAGEMENT
 OFFICE OF WATER RESOURCES
 FRESHWATER WETLANDS PROGRAM
 APPROVED WITH CONDITIONS
 AS SPECIFIED IN THE LETTER OF APPROVAL
 DATED DEC 03 2007 FILE # 06-0248
 NO CHANGES ALLOWED WITHOUT PRIOR APPROVAL
 APPROVED PLANS MUST BE AT CONSTRUCTION SITE

Charles A. Moorehead
 NOV 21 2007

	DATE	REVISION	THE RESIDENCES AT BAY RIDGE ASSESSOR'S PLAT 113 LOT 3 MIDDLETOWN, RHODE ISLAND PREPARED FOR: BAY RIDGE DEVELOPMENT CORP. 64 FERRY LANDING CIRCLE PORTSMOUTH, R.I. 02871
	9-4-07	TOWN SUBMISSION	
	9-12-07	D.E.M. WETLAND	
	11-5-07	F.W.W. COMMENTS	
DWN. BY: LBC		DWG. NO. SFM696PP2C	DRIVEWAY PROFILES - 2 DATE: AUG. 20, 2007 SCALE: AS NOTED SHEET 7 OF 11
		S.F.M. ENGINEERING ASSOCIATES 410 TIOGUE AVENUE COVENTRY, R.I. 02816 (401)826-3736	

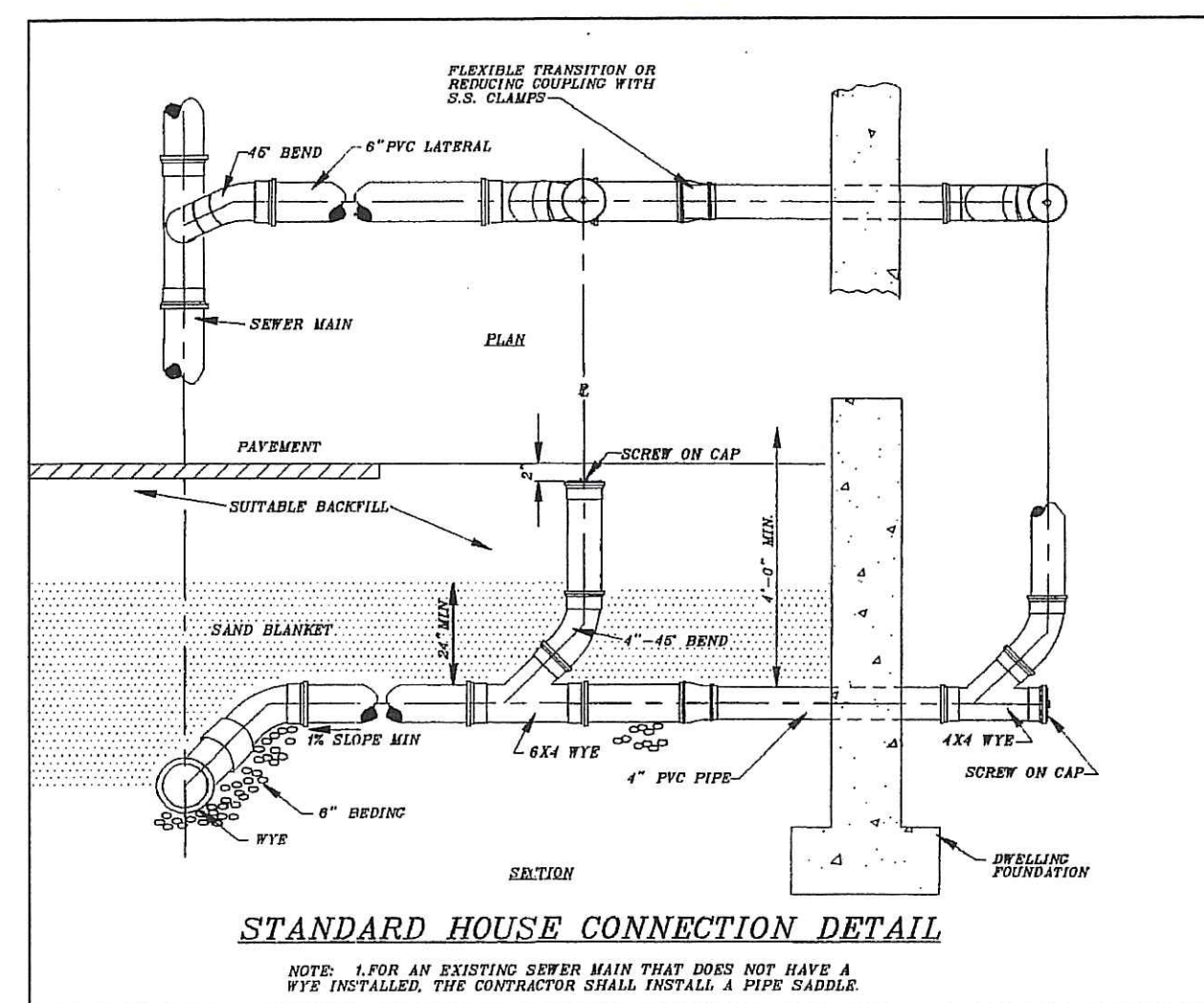
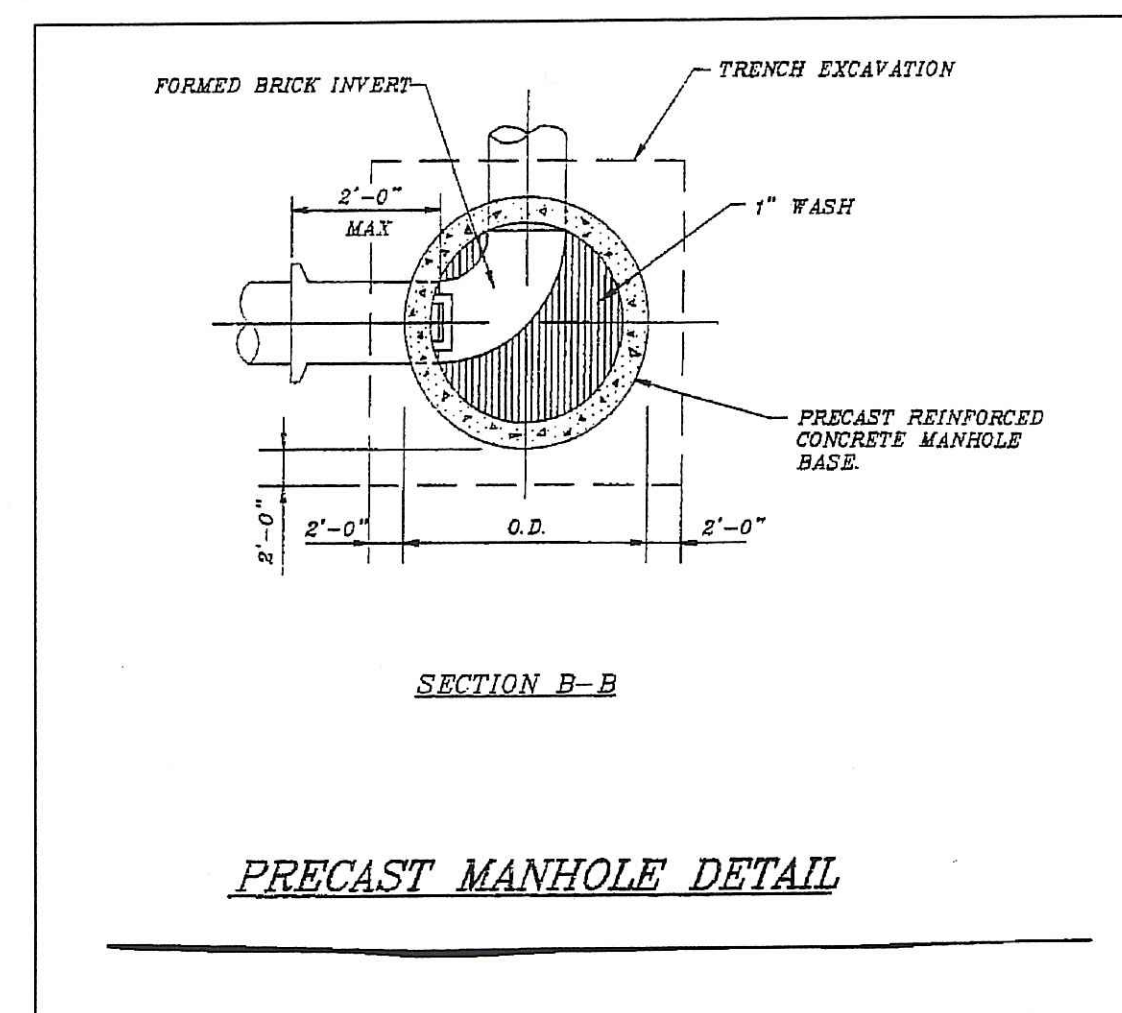
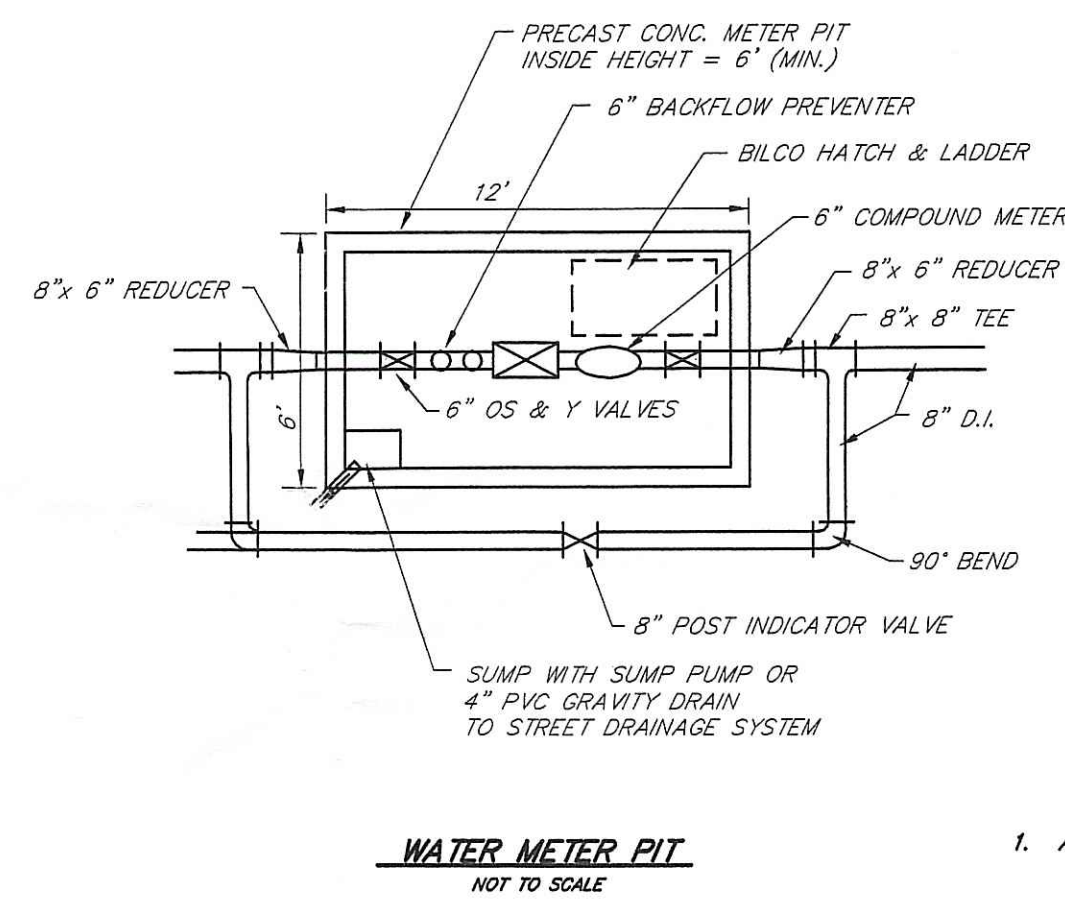
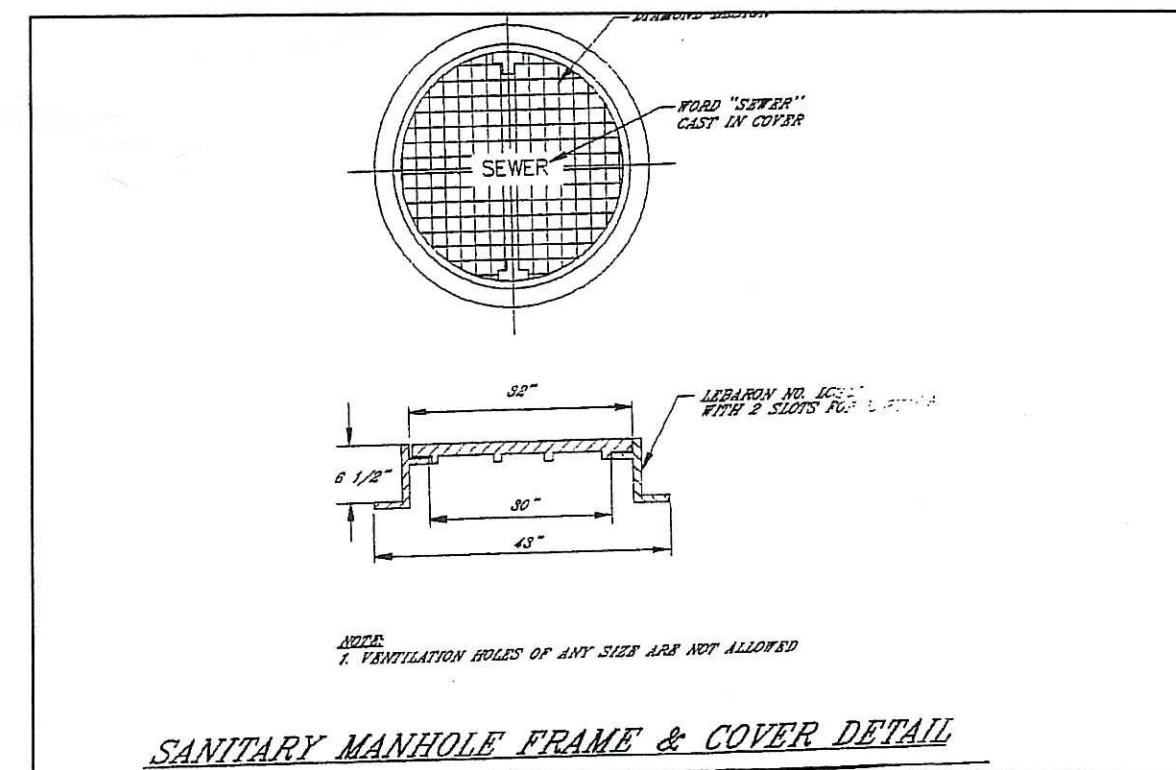
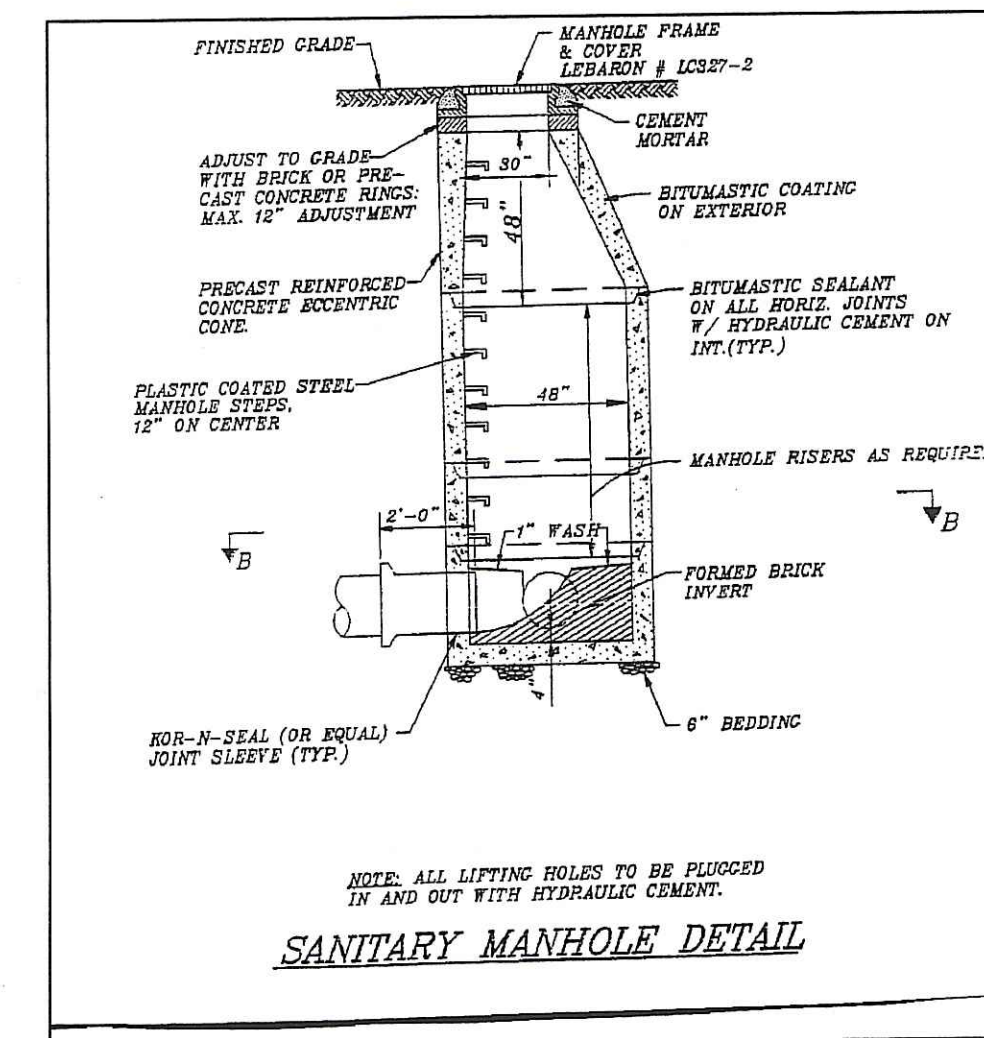
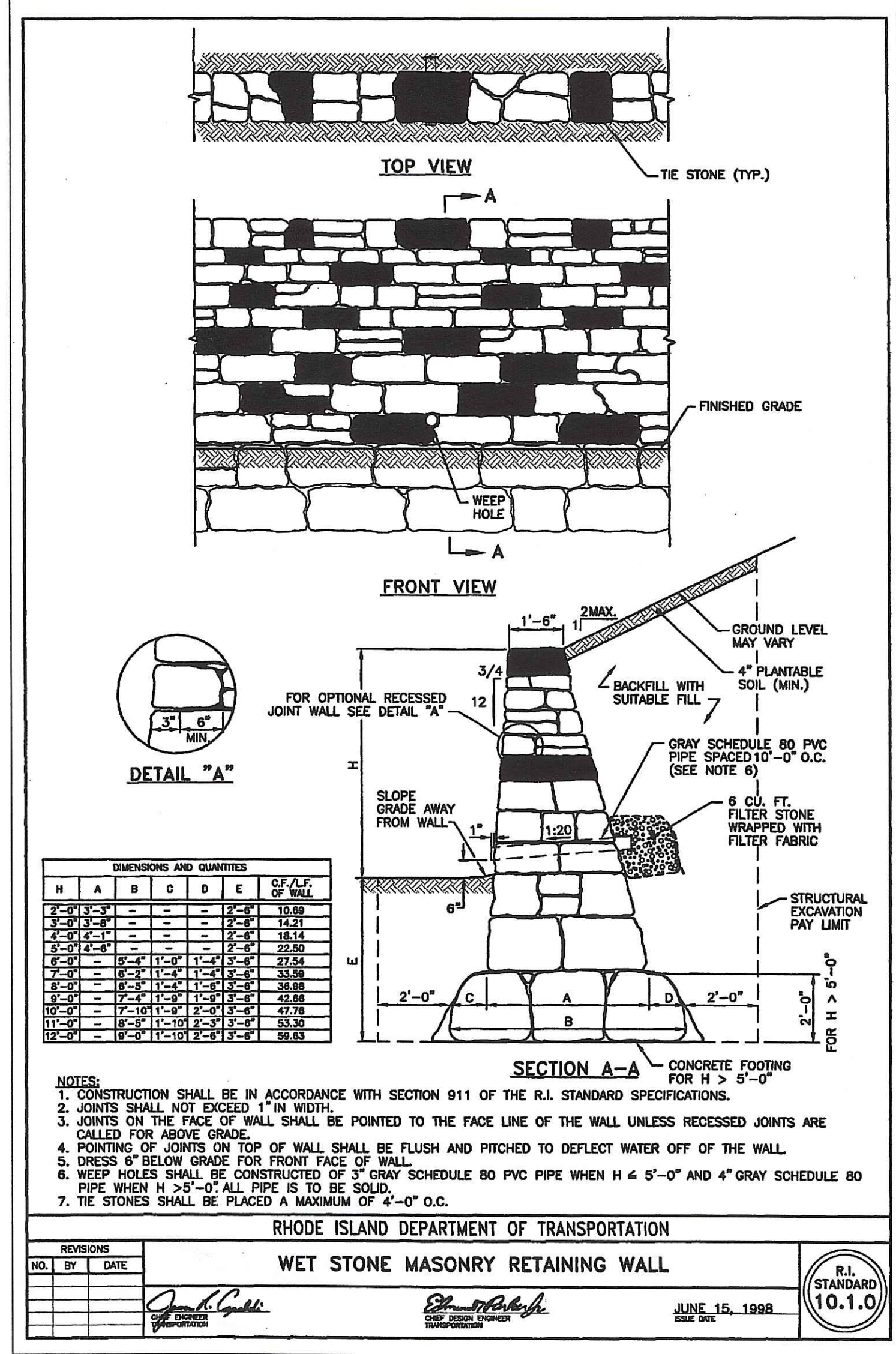
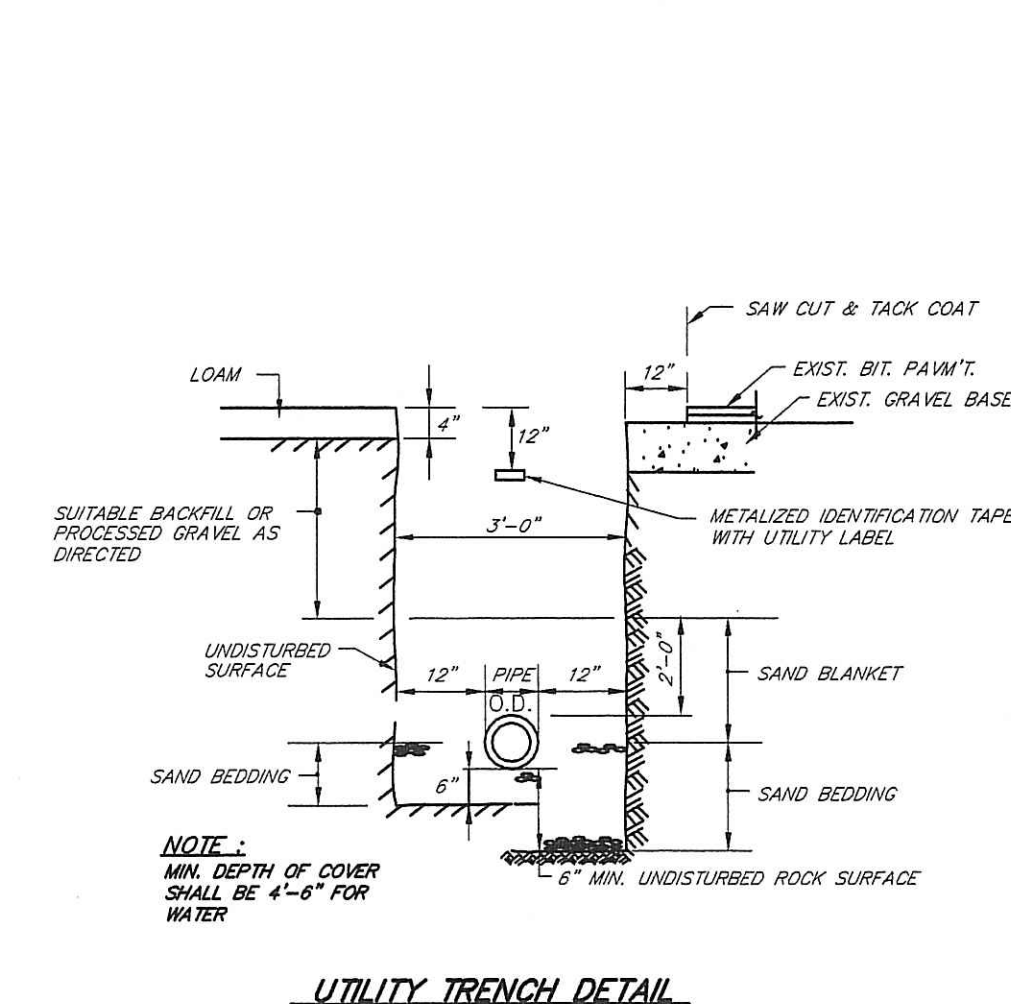
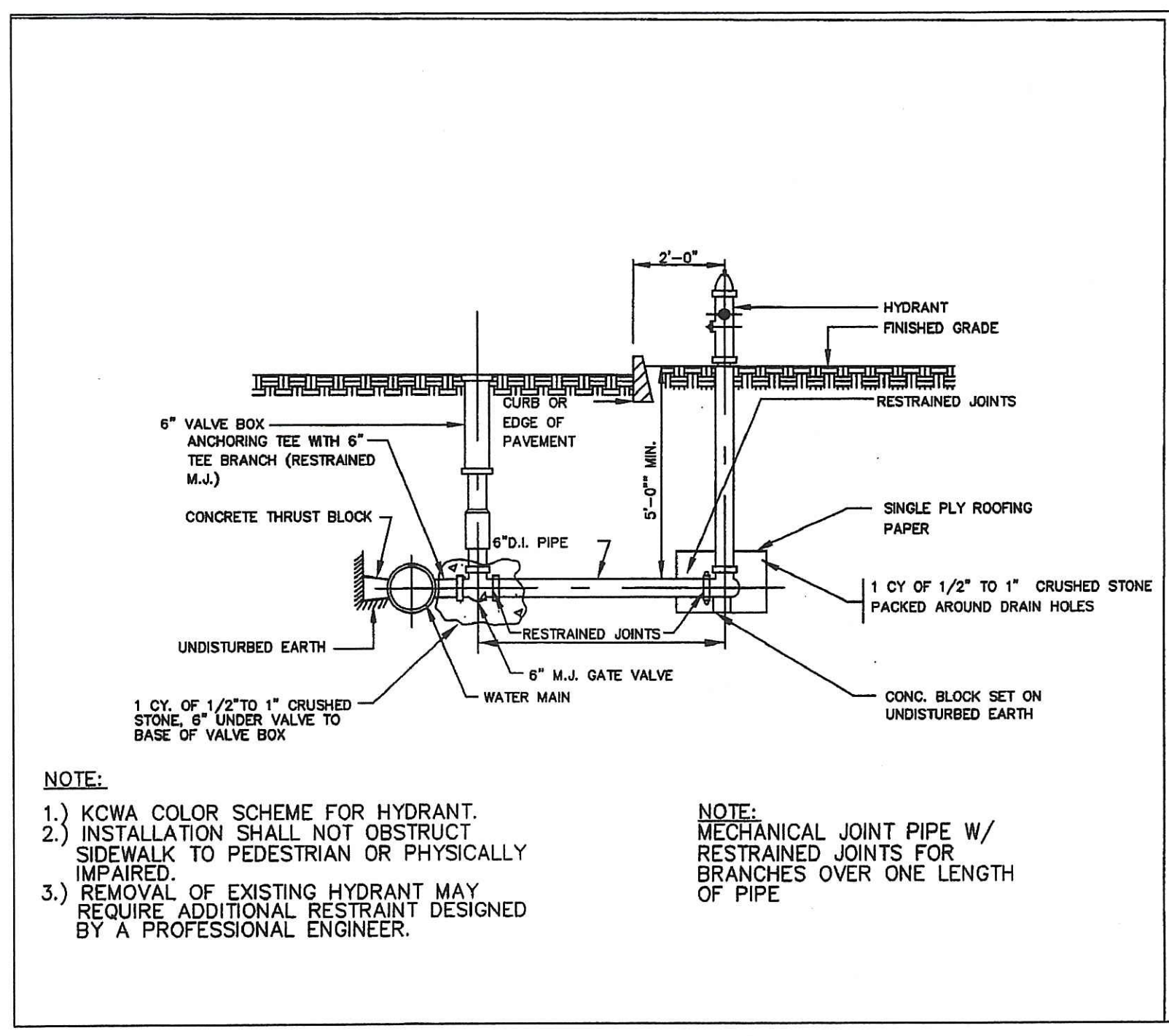
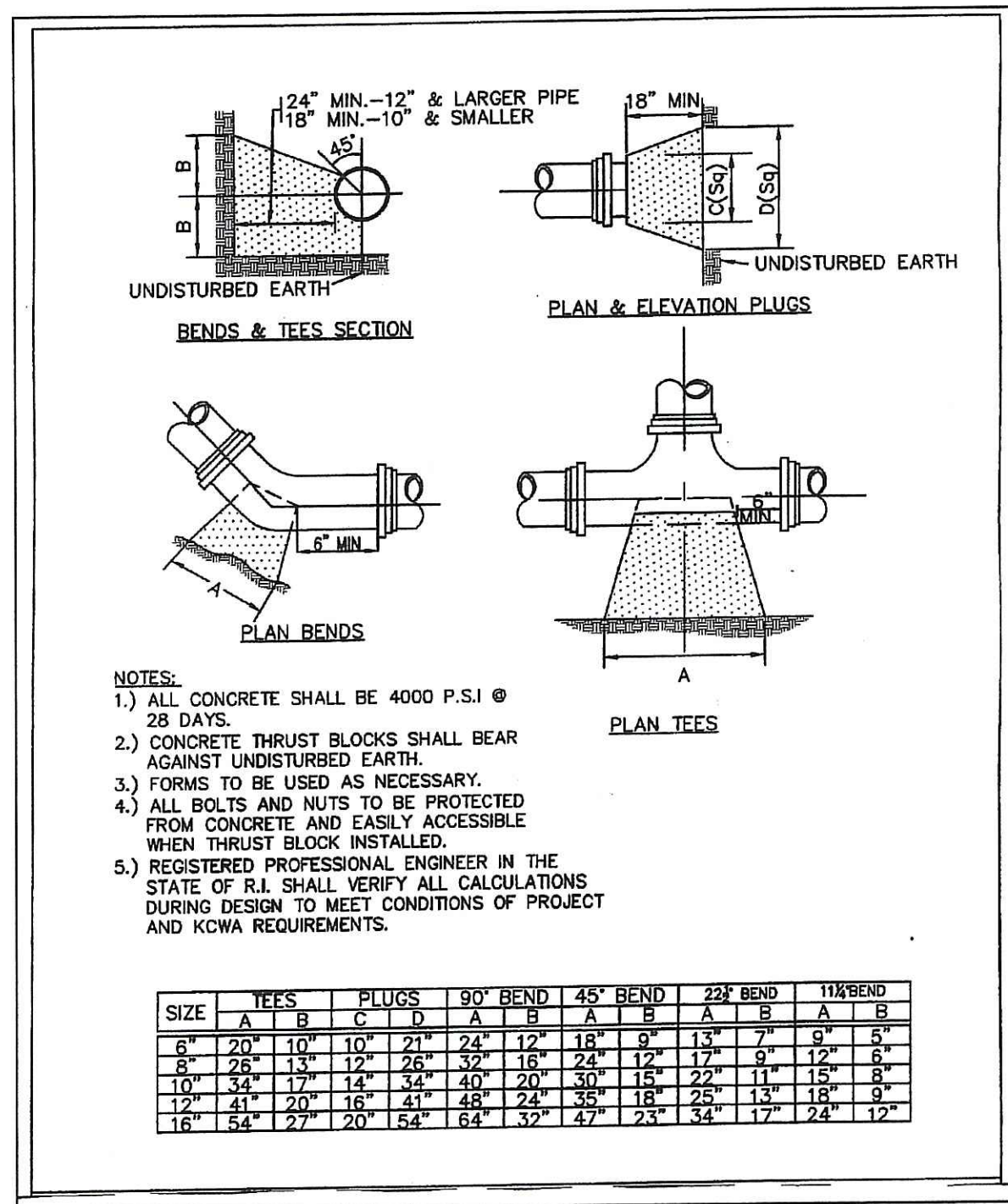


DEPARTMENT OF ENVIRONMENTAL MANAGEMENT
 OFFICE OF WATER RESOURCES
 FRESHWATER WETLANDS PROGRAM
 APPROVED WITH CONDITIONS
 AS SPECIFIED IN THE LETTER OF APPROVAL
 DATED DEC 03 2007 FILE # 06-0348
 NO CHANGES ALLOWED WITHOUT PRIOR APPROVAL
 APPROVED PLANS MUST BE AT CONSTRUCTION SITE

- NOTES:**
1. THE TEMPORARY SEDIMENT BASIN SHALL BE INSTALLED AT THE BEGINNING OF SITE CONSTRUCTION.
 2. SURFACE RUNOFF AND TEMP. STORM DRAINS SHALL BE DIRECTED TO THE SEDIMENT BASIN UNTIL THE DETENTION BASIN IS COMPLETED AND STABILIZED WITH A GOOD STAND OF GRASS.
 3. ADDITIONAL TEMPORARY SWALES AND DRAINS SHALL BE INSTALLED AS NECESSARY TO DIRECT RUNOFF TO THE SEDIMENT BASIN.
 4. SEE SHEET 10 FOR TEMPORARY SEEDING MEASURES AND EROSION AND SEDIMENT CONTROL DETAILS AND NOTES.
 5. AT ALL TIMES THE PERMANENT DETENTION BASIN SHALL BE PROTECTED FROM EROSION AND THE ACCUMULATION OF SILTS AND SEDIMENTS.

NOV 21 2007

SCOTT F. MOOREHEAD REGISTERED PROFESSIONAL ENGINEER	DATE	REVISION	THE RESIDENCES AT BAY RIDGE ASSESSOR'S PLAT 113 LOT 3 MIDDLETOWN, RHODE ISLAND PREPARED FOR: BAY RIDGE DEVELOPMENT CORP. 64 FERRY LANDING CIRCLE PORTSMOUTH, R.I. 02871 TEMPORARY SEDIMENT BASIN
	9-4-07	TOWN SUBMISSION	
	9-12-07	D.E.M. WETLAND	
	11-5-07	F.W.W. COMMENTS	
DWN. BY: LBC	DWG. NO. SFM696TC	S.F.M. ENGINEERING ASSOCIATES 410 TIOGUE AVENUE COVENTRY, R.I. 02816 (401)826-3736	
DATE: AUG. 20, 2007		SCALE: 1"= 40'	SHEET 8 OF 11



- UTILITY NOTES:**
1. LOCATIONS AND SIZES OF EXISTING UTILITIES IS PLOTTED FROM BEST AVAILABLE INFORMATION. THE CONTRACTOR SHALL VERIFY ALL INFORMATION WITH THE APPROPRIATE UTILITY AUTHORITY AND DIG SAFE PRIOR TO ANY CONSTRUCTION OR EXCAVATION.
 2. EXPLORATORY TEST PITS SHALL BE EXCAVATED TO CONFIRM LOCATION AND DEPTH AT ANY CRITICAL AREAS, AS REQUIRED.
 3. CONTRACTOR SHALL COORDINATE SERVICE LOCATIONS WITH THE UTILITY COMPANY PLANS AND THE ARCHITECTURAL PLANS.
 4. STORM DRAINAGE PIPE SHALL BE CL. J REINFORCED CONCRETE PIPE OR HIGH DENSITY POLYETHYLENE, ADS N-12 OR EQUAL.
 5. GAS, CABLE, ELECTRIC AND TELEPHONE SERVICES SHALL BE AS PER APPROPRIATE UTILITY AUTHORITY REQUIREMENTS.
 6. SEWER AND WATER MAINS AND SERVICES SHALL CONFORM TO TOWN OF MIDDLETOWN AND CITY OF NEWPORT REQUIREMENTS.
 7. UTILITY SERVICE INSTALLATIONS SHALL BE APPROVED AND INSPECTED BY THE APPROPRIATE UTILITY COMPANY.
 8. SANITARY SEWER MAINS SHALL BE 8" SDR-35 PVC. ALL SEWER RELATED WORK SHALL BE IN ACCORDANCE WITH THE POLICIES AND PRACTICES OF THE MIDDLETOWN DPW.

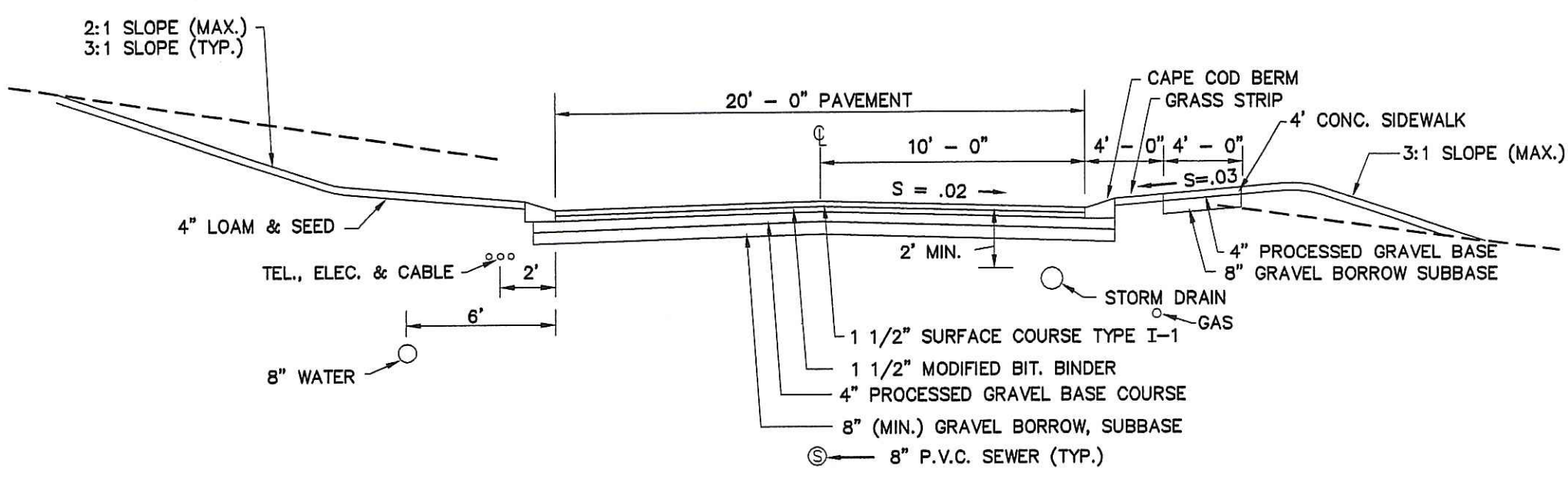
- WATER NOTES:**
1. WATER MAINS SHALL BE 8" CL. S2 DUCTILE IRON. WATER SERVICE SHALL BE 1 1/2" TYPE K COPPER OR POLYETHYLENE C.T.S. 200 PSI. ALL WATER RELATED WORK SHALL BE IN ACCORDANCE WITH THE POLICIES AND PRACTICES OF THE NEWPORT WATER DIVISION.
 2. WATER LINES SHALL BE INSTALLED A MINIMUM OF 18" ABOVE SEWER LINES AND A HORIZONTAL SEPARATION OF 10' SHALL BE MAINTAINED BETWEEN WATER LINES AND ALL OTHER UTILITIES.

DEPARTMENT OF ENVIRONMENTAL MANAGEMENT
OFFICE OF WATER RESOURCES
FRESHWATER WETLANDS PROGRAM
APPROVED WITH CONDITIONS
AS SPECIFIED IN THE LETTER OF APPROVAL
DATED DEC 03 2007 FILE # 06-0248
NO CHANGES ALLOWED WITHOUT PRIOR APPROVAL
APPROVED PLANS MUST BE AT CONSTRUCTION SITE

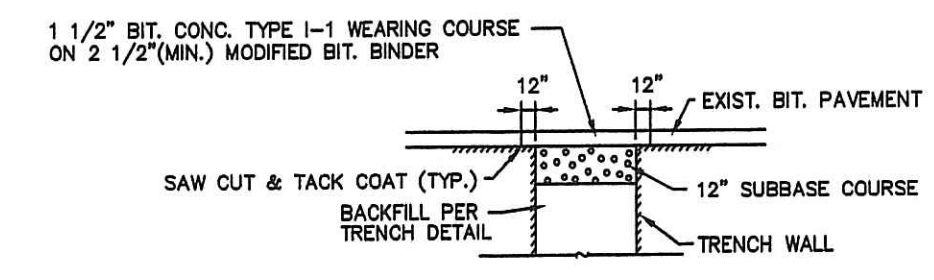
Charles A. Moorehead

NOV 21 2007

<p>SCOTT F. MOOREHEAD No. 4298 REGISTERED PROFESSIONAL ENGINEER</p>	DATE	REVISION	<p>THE RESIDENCES AT BAY RIDGE ASSESSOR'S PLAT 113 LOT 3 MIDDLETOWN, RHODE ISLAND</p> <p>PREPARED FOR: BAY RIDGE DEVELOPMENT CORP. 64 FERRY LANDING CIRCLE PORTSMOUTH, R.I. 02871</p> <p>CONSTRUCTION NOTES & DETAILS-1</p>
	9-4-07	TOWN SUBMISSION	
	9-12-07	D.E.M. WETLANDS	
	11-5-07	F.W.W. COMMENTS	
DWN. BY: LBC	DWG. NO. SFM696CD1-B	<p>S.F.M. ENGINEERING ASSOCIATES 410 TROGUE AVENUE COVENTRY, R.I. 02816 (401)826-3736</p>	
DATE: AUG. 20, 2007		SCALE: AS NOTED	SHEET 10 OF 11

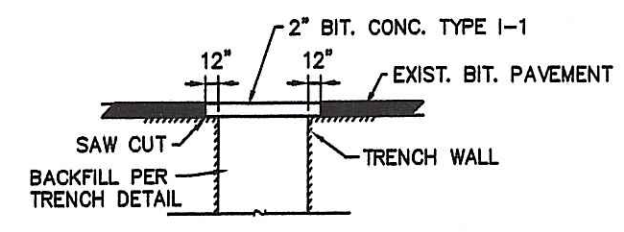


TYPICAL DRIVEWAY SECTION
NOT TO SCALE

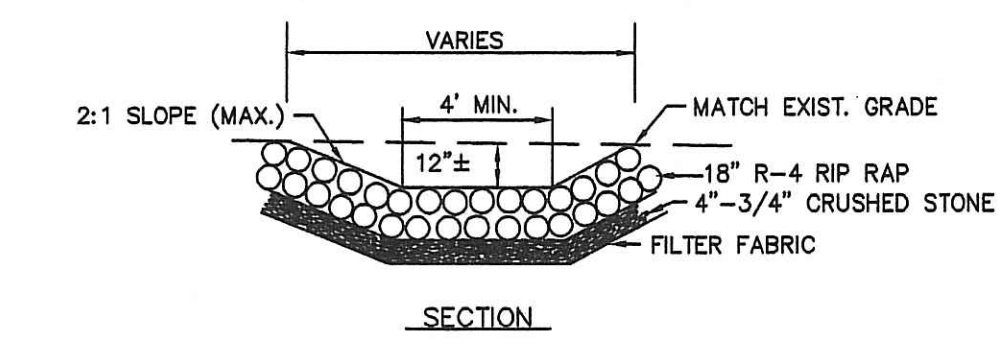


- NOTE:**
1. ALL PAVEMENT EDGES SHALL BE TACK COATED.
 2. RESAW CUT EXIST. BIT. PAVMT. 12\"/>

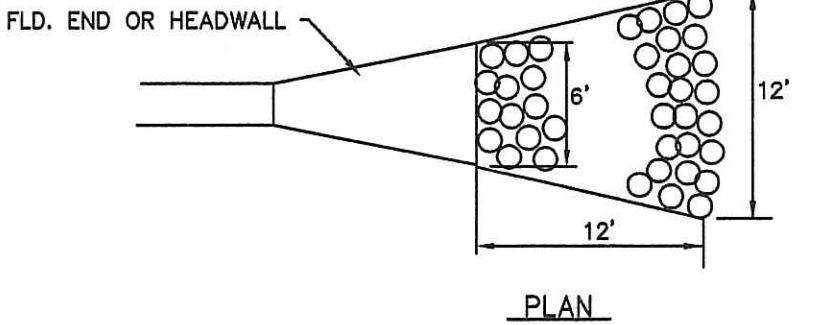
PERMANENT PAVEMENT PATCH
NOT TO SCALE



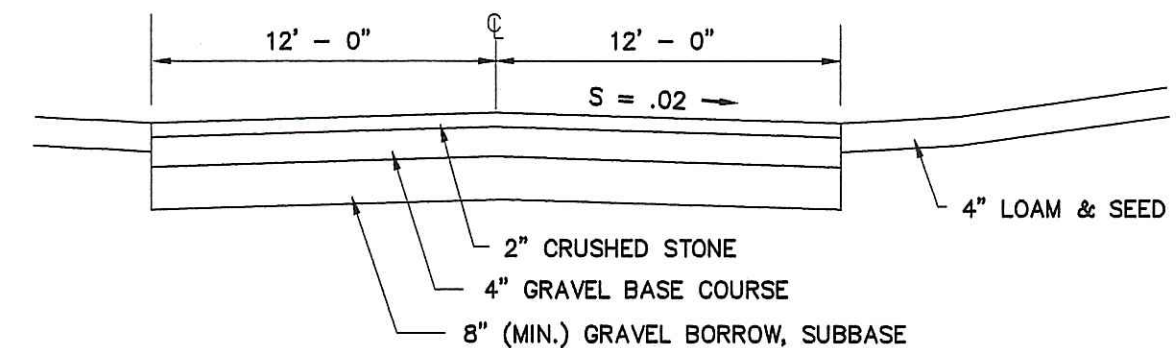
TEMPORARY PAVEMENT PATCH
NOT TO SCALE



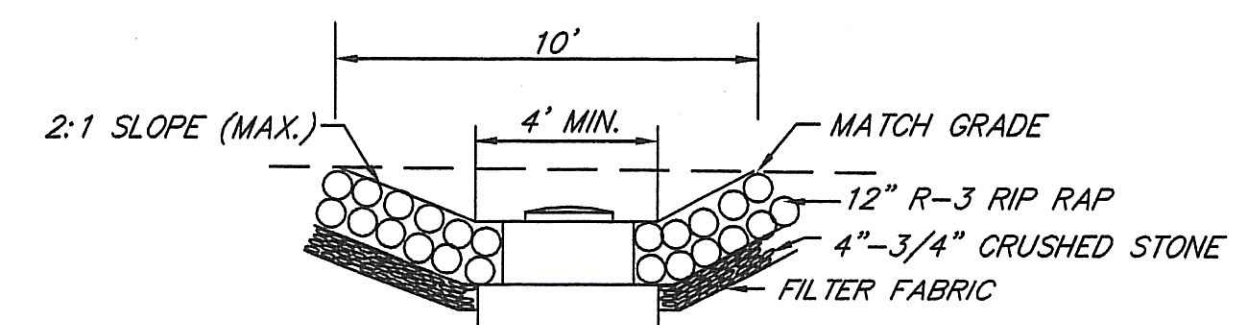
- NOTE:**
RIP RAP SWALES SHALL BE 6\"/>



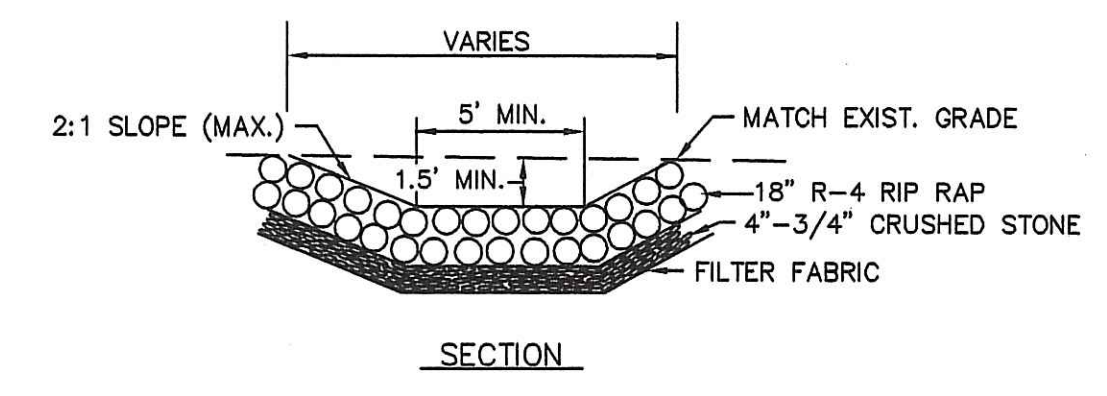
RIP RAP @ FLARED END
NOT TO SCALE



EMERGENCY ACCESS ROAD SECTION
NOT TO SCALE



RIP RAP @ TYPE R CATCH BASIN
NOT TO SCALE



RIP RAP SWALE DETAIL
NOT TO SCALE

GENERAL NOTES

1. ALL WORK PERFORMED HEREIN SHALL BE GOVERNED BY THE R.I. STANDARD SPECIFICATIONS FOR ROAD AND BRIDGE CONSTRUCTION (REVISION OF 1997) WITH ALL CORRECTIONS AND ADDENDA AND THE 1998 R.I. STANDARD DETAILS WITH ALL CORRECTIONS AND ADDENDA.
2. EMBANKMENT SLOPES AND ALL DISTURBED AREAS ARE TO RECEIVE 4\"/>

SEDIMENTATION CONTROL PROGRAM

1. EXTREME CARE SHALL BE EXERCISED SO AS TO PREVENT ANY SEDIMENTS FROM ENTERING THE WETLANDS OR ADJOINING PROPERTIES.
2. BANKS OR SLOPES OVER 5 PERCENT SHALL BE SEEDED AS SOON AS POSSIBLE AND SHALL BE PROTECTED WITH A HAY, STRAW OR FIBER MULCH.
3. DURING CONSTRUCTION, THE CONTRACTOR AND/OR DEVELOPER SHALL BE RESPONSIBLE FOR MAINTAINING DRAINAGE AND RUNOFF FLOW DURING STORMS AND PERIODS OF RAINFALL.

EROSION CONTROL & SOIL STABILIZATION PROGRAM

1. DENUDE SLOPES SHALL NOT BE UNATTENDED OR EXPOSED FOR EXCESSIVE PERIODS OF TIME SUCH AS THE INACTIVE WINTER SEASON.
2. ALL DISTURBED SLOPES, EITHER NEWLY CREATED OR EXPOSED PRIOR TO OCTOBER 15, SHALL BE SEEDED OR PROTECTED BY THAT DATE FOR ANY WORK COMPLETED DURING EACH CONSTRUCTION YEAR.
3. THE TOP SOIL SHALL HAVE A SANDY LOAM TEXTURE RELATIVELY FREE OF SUBSOIL MATERIAL, STONES, ROOTS, LUMPS OF SOIL, TREE LIMBS, TRASH OR CONSTRUCTION DEBRIS AND SHALL CONFORM WITH R.I. STANDARD SPECIFICATION M. 20.

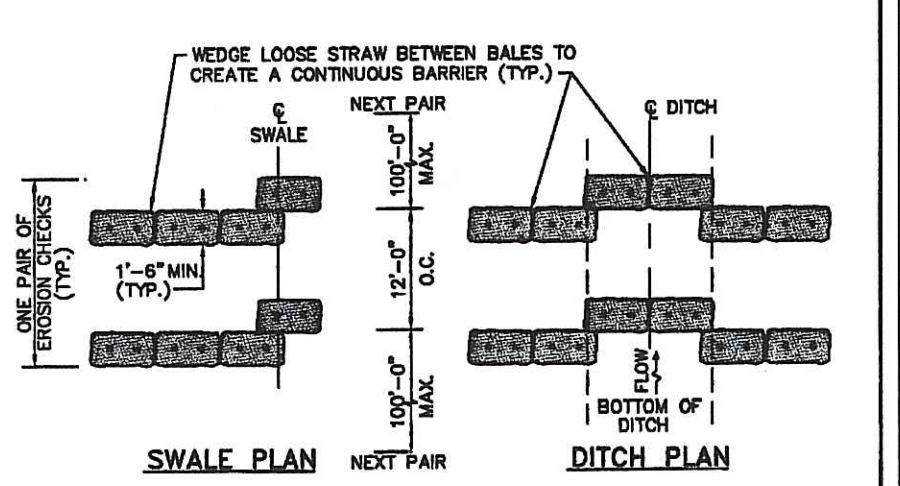
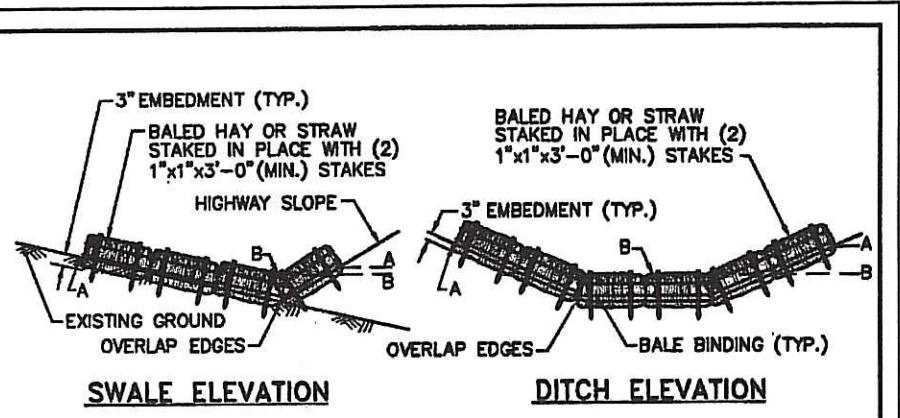
SEEDING MIXTURES

MIXTURE	% BY WT.	SEEDING DATES
RED FESCUE	70	APRIL 1-JUNE 15
KENTUCKY BLUEGRASS	15	APRIL 1-JUNE 15
COLONIAL BENTGRASS	5	AUG. 15-OCT. 15
PERENNIAL RYEGRASS	10	AUG. 15-OCT. 15
TOTAL	200 LBS/AC	

MIXTURE	% BY WT.	SEEDING DATES
TALL FESCUE	70	APRIL 1-JUNE 15
RED FESCUE	32	APRIL 1-JUNE 15
PERENNIAL RYEGRASS	24	AUG. 15-OCT. 15
WILDFLOWER MIX	15	AUG. 15-OCT. 15
REED CANARY GRASS	7	
REDTOP	4	
TOTAL	200 LBS/AC	

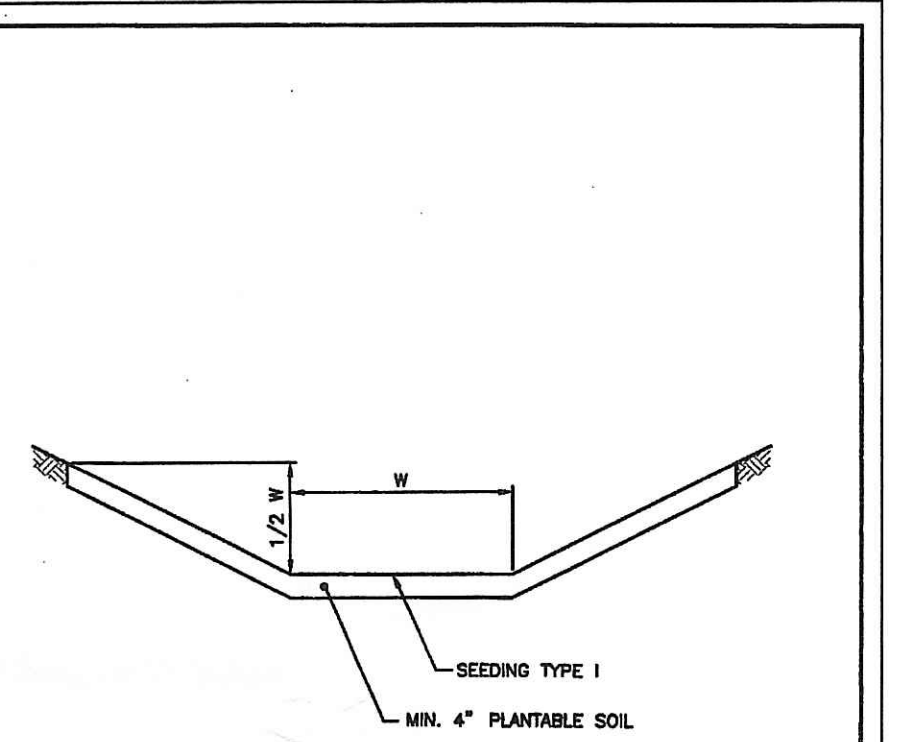
ORDER OF PROCEDURE

1. PRIOR TO ANY CONSTRUCTION OR EXCAVATION, HAYBALES OR SILT FENCE SHALL BE INSTALLED AT THE PROPERTY LINE OR LIMIT OF DISTURBANCE. TEMPORARY HAYBALES OR SILT FENCE SHALL BE INSTALLED AT THE LIMIT OF WORK ACTIVITY IF CONSTRUCTION IS TO BE DONE IN PHASES.
2. ALL EROSION AND SEDIMENTATION CONTROL STRUCTURES SHALL BE PERIODICALLY MAINTAINED AS PER THE RESPECTIVE PROGRAMS FOR TEMPORARY CONTROL.
3. IF WORK PROGRESS IS TO BE INTERRUPTED AT ANY TIME, REFERENCE EROSION AND SEDIMENTATION PROGRAMS FOR TEMPORARY CONTROL.
4. TEMPORARY HAYBALES AND SANDBAGS ALONG AND AT THE ENDS OF ROADWAYS MAY ALSO BE REMOVED AFTER FINAL SOIL STABILIZATION HAS BEEN ACHIEVED AND APPROVED.
5. HAYBALES LOCATED AT DRAINAGE INLETS OR OUTLETS MUST REMAIN UNTIL SUCH TIME THAT A DESIRABLE STAND OF GRASS OR GROUND COVER HAS BEEN ESTABLISHED AND THE PROJECT RECEIVES A FAVORABLE APPROVAL FOR FINAL ACCEPTANCE FROM THE ENGINEER.



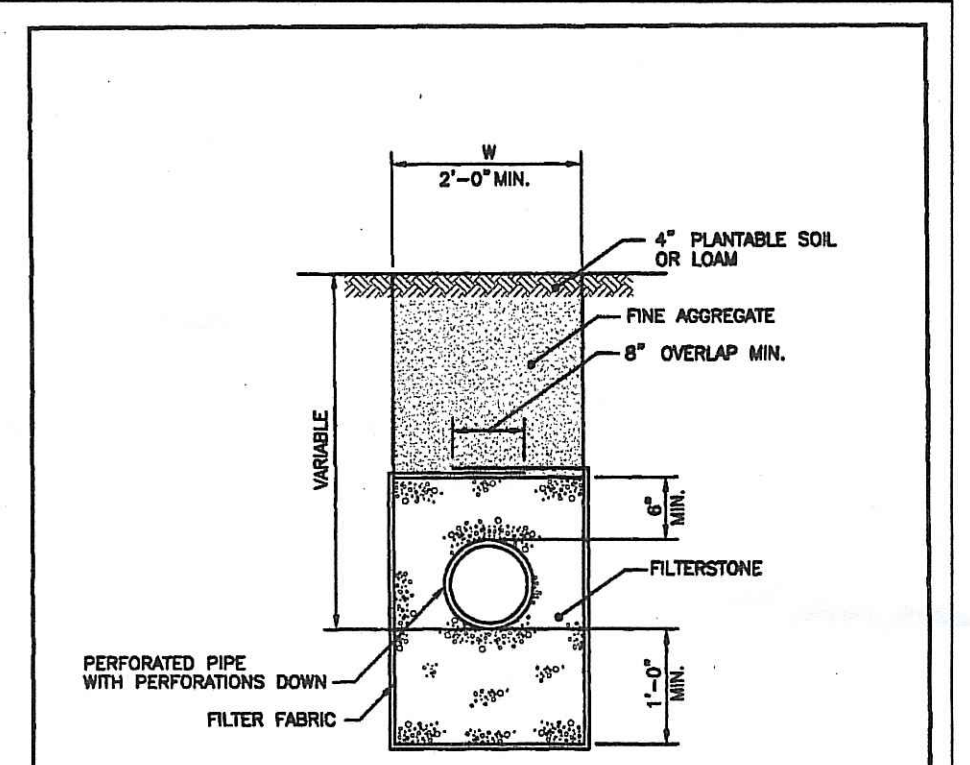
- NOTES:**
1. SHALL BE IN ACCORDANCE WITH SECTION 207 OF THE R.I. STANDARD SPECIFICATIONS.
 2. TO BE USED IN LOCATIONS WHERE THE EXISTING GROUND SLOPES IN TOWARD THE EMBANKMENT OR IN DRAINAGE DITCHES AS CALLED FOR ON THE PLANS.
 3. THE BALES ARE TO BE EMBEDDED A MINIMUM OF 3\"/>

RHODE ISLAND DEPARTMENT OF TRANSPORTATION
BALED HAY DITCH AND SWALE EROSION CHECK
R.I. STANDARD 9.4.0



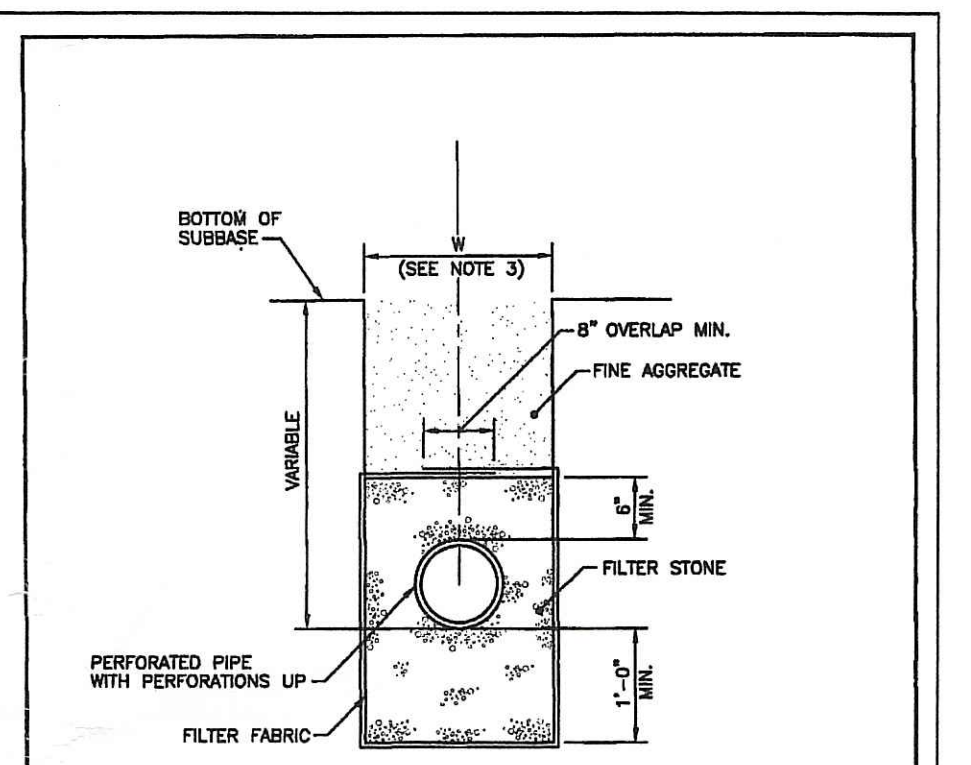
- NOTE:**
SLOPES MAY VARY TO SUIT CONDITIONS AS PER PLANS OR ENGINEER.

RHODE ISLAND DEPARTMENT OF TRANSPORTATION
SEEDED DITCH
R.I. STANDARD 8.1.0



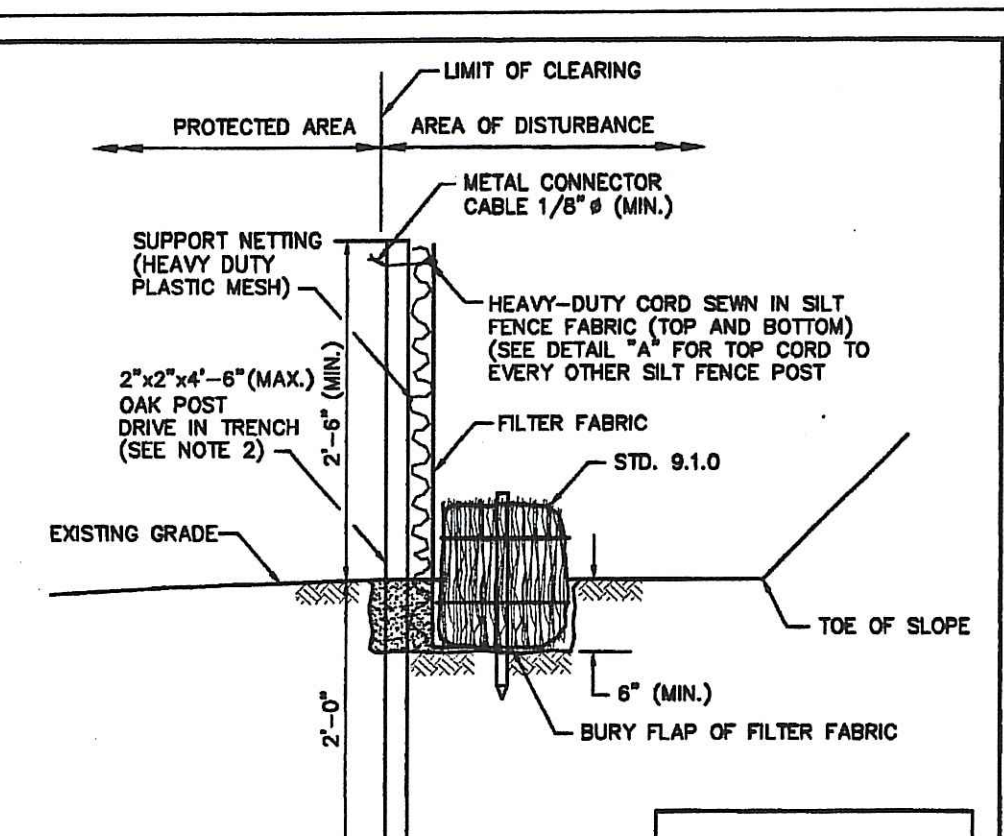
- NOTES:**
1. SHALL BE IN ACCORDANCE WITH SECTION 703 OF THE R.I. STANDARD SPECIFICATIONS.
 2. MINIMUM PIPE DIAMETER 1'-0\"/>

RHODE ISLAND DEPARTMENT OF TRANSPORTATION
UNDERDRAIN
R.I. STANDARD 1.1.0



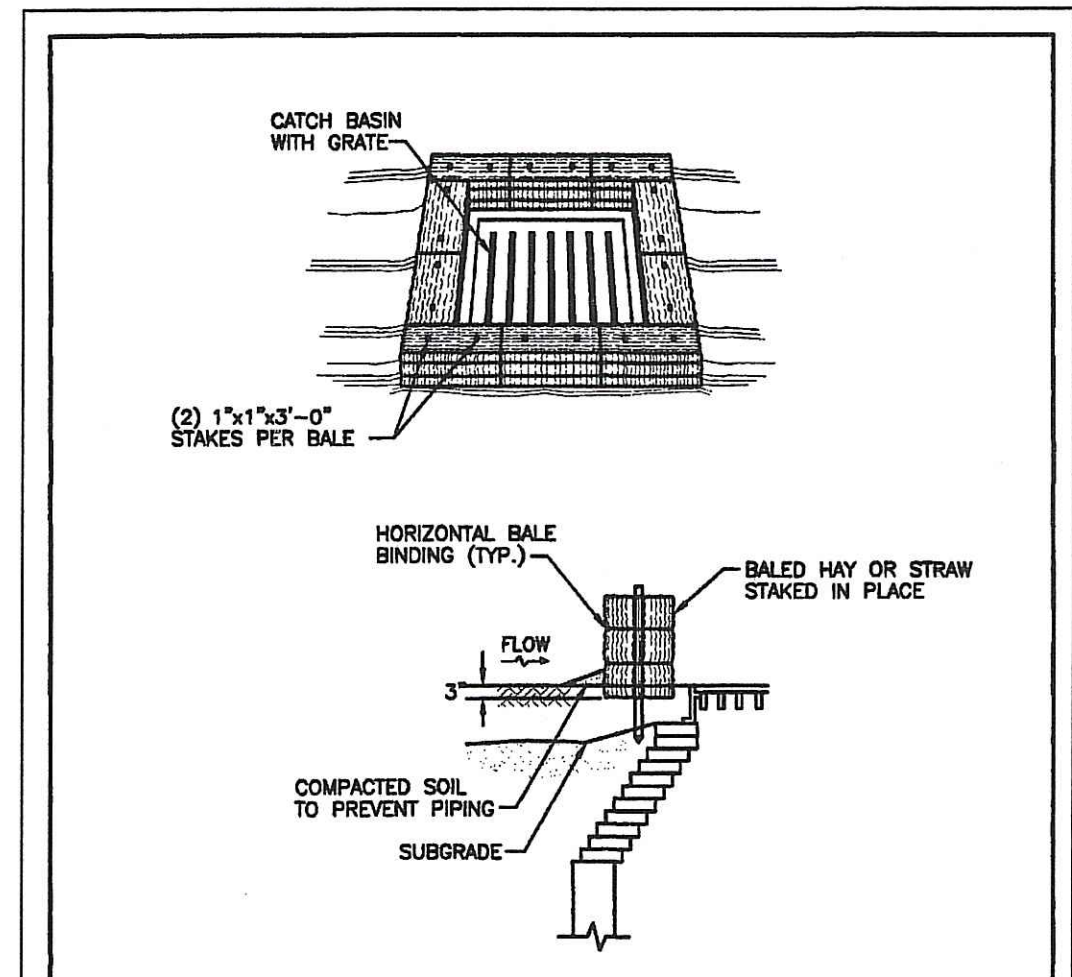
- NOTES:**
1. SHALL BE IN ACCORDANCE WITH SECTION 703 OF THE R.I. STANDARD SPECIFICATIONS.
 2. MINIMUM PIPE DIAMETER 1'-0\"/>

RHODE ISLAND DEPARTMENT OF TRANSPORTATION
COMBINATION DRAIN
R.I. STANDARD 1.2.0



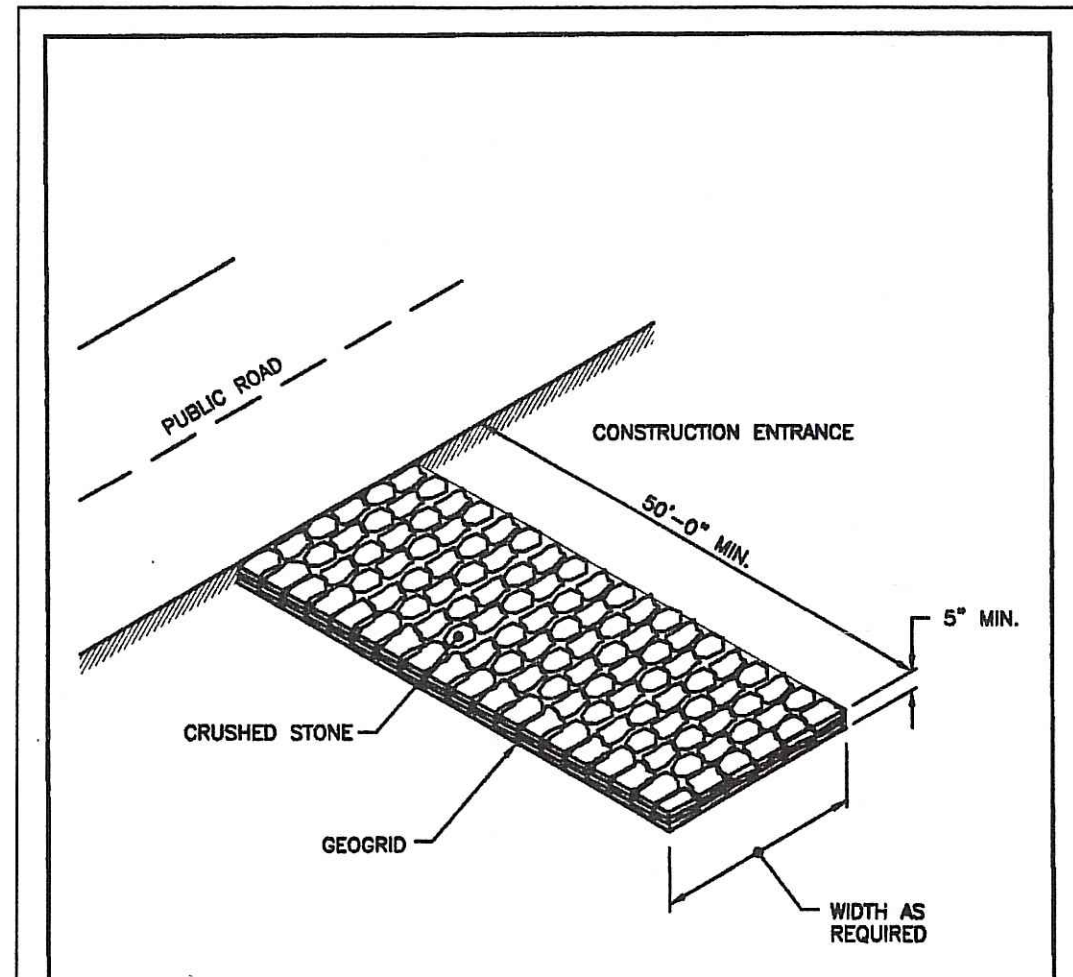
- NOTES:**
1. SHALL BE IN ACCORDANCE WITH SECTION 206 OF THE R.I. STANDARD SPECIFICATIONS.
 2. STD. 9.1.0 IS INSTALLED "TIGHT" AGAINST SILT FENCE. THOROUGHLY COMPACT EXCAVATED SOILS BACK INTO TRENCH AFTER INSTALLATION OF EROSION CONTROL DEVICE. SILT FENCE FABRIC SHALL NOT BE SILT STD. 9.1.0 POST SHALL BE DRIVEN THROUGH SILT FENCE FABRIC 2\"/>

RHODE ISLAND DEPARTMENT OF TRANSPORTATION
BALED HAY EROSION CHECK AND SILT FENCE COMBINED
R.I. STANDARD 9.3.0



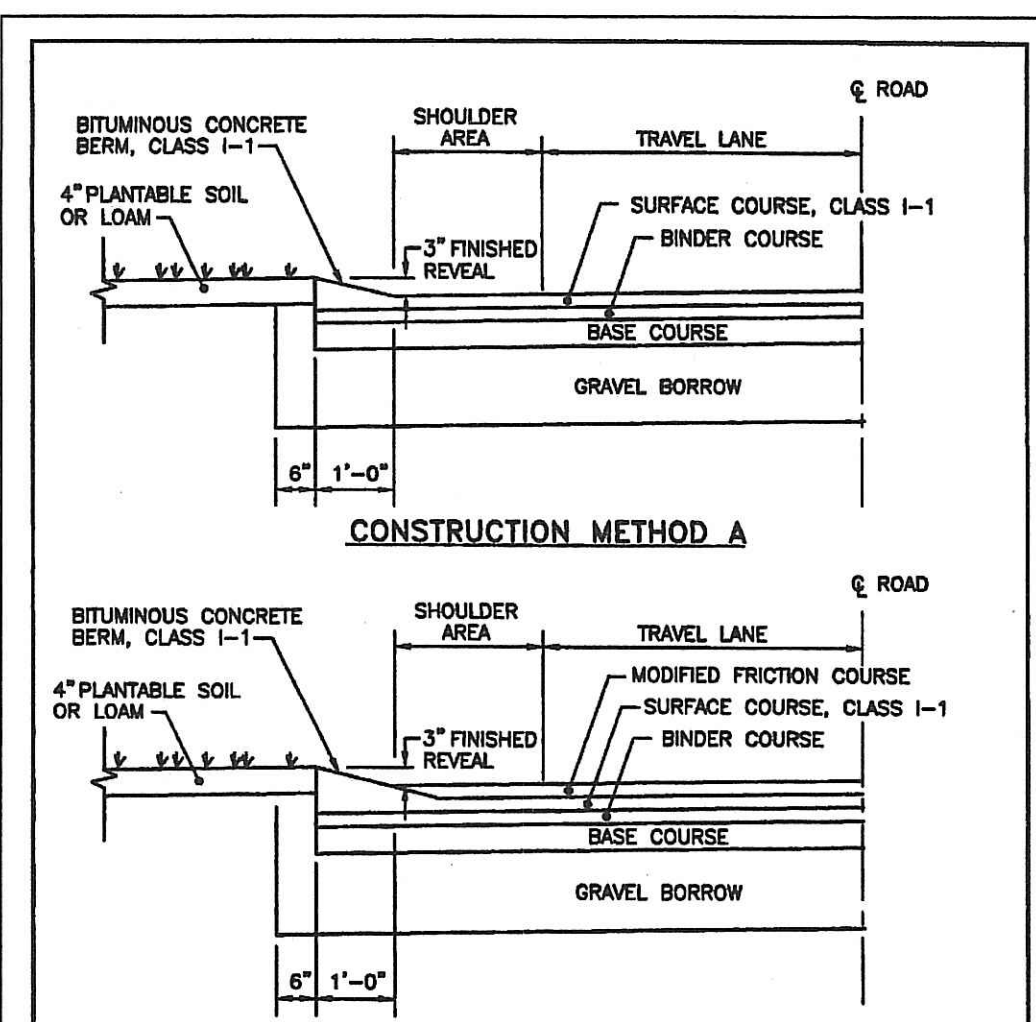
- NOTES:**
1. SHALL BE IN ACCORDANCE WITH SECTION 209 OF THE R.I. STANDARD SPECIFICATIONS.
 2. THIS INLET PROTECTION CAN ALSO BE USED WHEN CONSTRUCTION SEQUENCING REQUIRES A CATCH BASIN TO BE EXPOSED TO SEDIMENT FROM THE SUBGRADE. THIS WILL BE ACHIEVED BY INSTALLING THE BALED HAY AS SHOWN ON THIS DETAIL INTO THE SUBGRADE.
 3. THE PERIMETER CONFIGURATION OF THE BALED HAY WILL VARY DEPENDING ON THE PARTICULAR TYPE OF CATCH BASIN INLET BEING CONSTRUCTED. THE ENGINEER WILL PROVIDE SPECIFIC DIRECTION IN SUCH CASES.

RHODE ISLAND DEPARTMENT OF TRANSPORTATION
BALED HAY CATCH BASIN INLET PROTECTION
R.I. STANDARD 9.8.0



- NOTE:**
SHALL BE IN ACCORDANCE WITH SECTION 211 OF THE R.I. STANDARD SPECIFICATIONS.

RHODE ISLAND DEPARTMENT OF TRANSPORTATION
CONSTRUCTION ACCESS
R.I. STANDARD 9.9.0

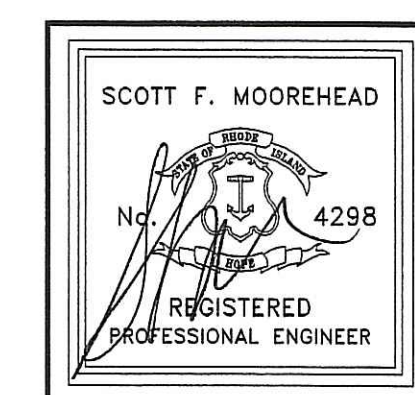


- NOTES:**
1. SHALL BE IN ACCORDANCE WITH SECTION 805 OF THE R.I. STANDARD SPECIFICATIONS.
 2. BITUMINOUS BERM CAN BE PLACED AT THE SAME TIME THAT THE SURFACE COURSE LAYER IS PLACED ON THE PROJECT ROADWAY, OR IT CAN BE INSTALLED IN A SEPARATE OPERATION.

RHODE ISLAND DEPARTMENT OF TRANSPORTATION
BITUMINOUS BERM
R.I. STANDARD 7.5.1

DEPARTMENT OF ENVIRONMENTAL MANAGEMENT
OFFICE OF WATER RESOURCES
FRESHWATER WETLANDS PROGRAM
APPROVED WITH CONDITIONS
AS SPECIFIED IN THE LETTER OF APPROVAL
DATED DEC 03 2007 FILE # 06-0248
NO CHANGES ALLOWED WITHOUT PRIOR APPROVAL
APPROVED PLANS MUST BE AT CONSTRUCTION SITE

Charles A. Moorehead
NOV 21 2007



DATE	REVISION
9-4-07	TOWN SUBMISSION
9-12-07	D.E.M. WETLANDS
11-5-07	F.W.W. COMMENTS

S.F.M. ENGINEERING ASSOCIATES
410 TIGUE AVENUE
COVENTRY, R.I. 02816
(401)828-3736

THE RESIDENCES AT BAY RIDGE
ASSESSOR'S PLAT 113 LOT 3
MIDDLETOWN, RHODE ISLAND
PREPARED FOR:
BAY RIDGE DEVELOPMENT CORP.
64 FERRY LANDING CIRCLE
PORTSMOUTH, R.I. 02871