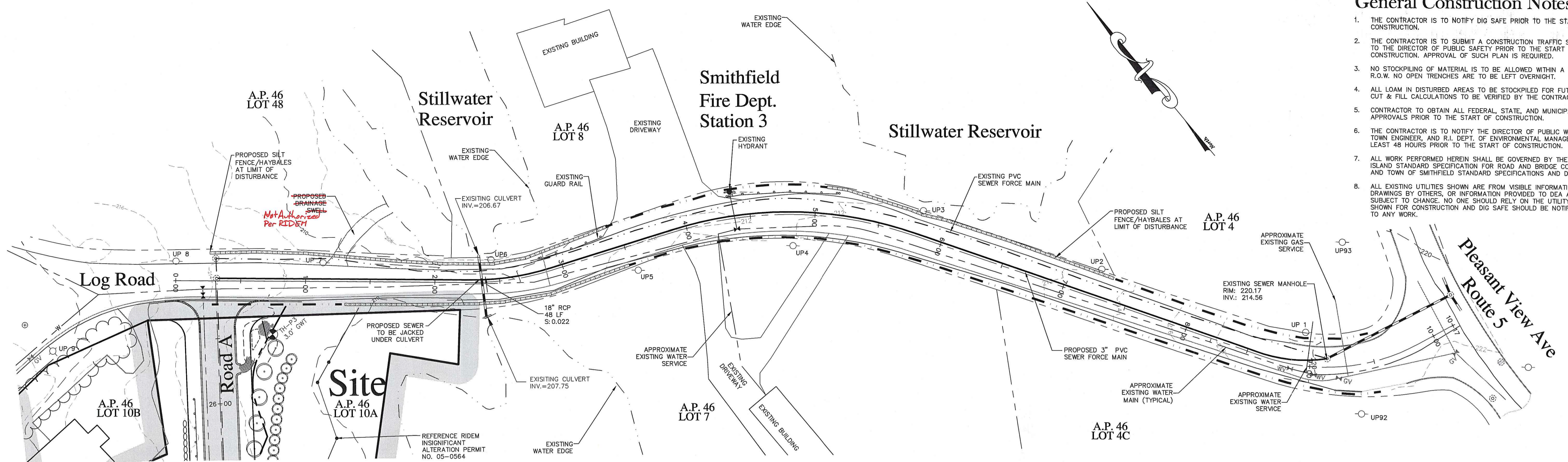
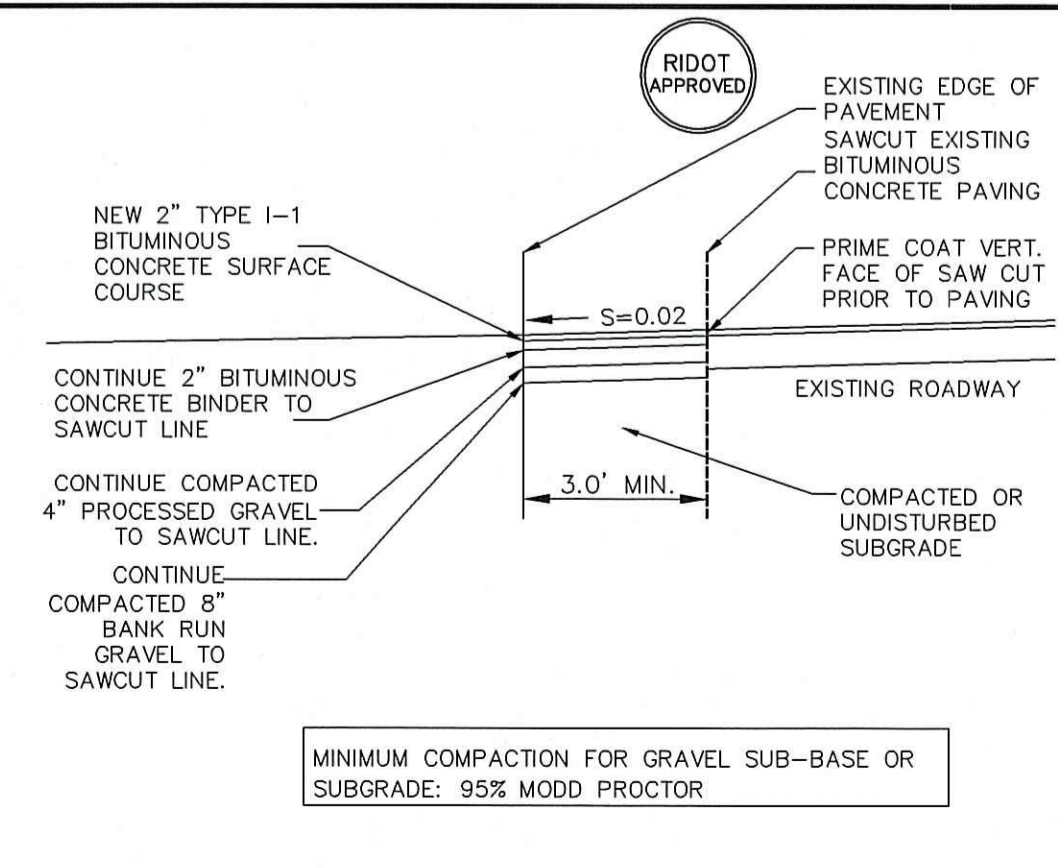
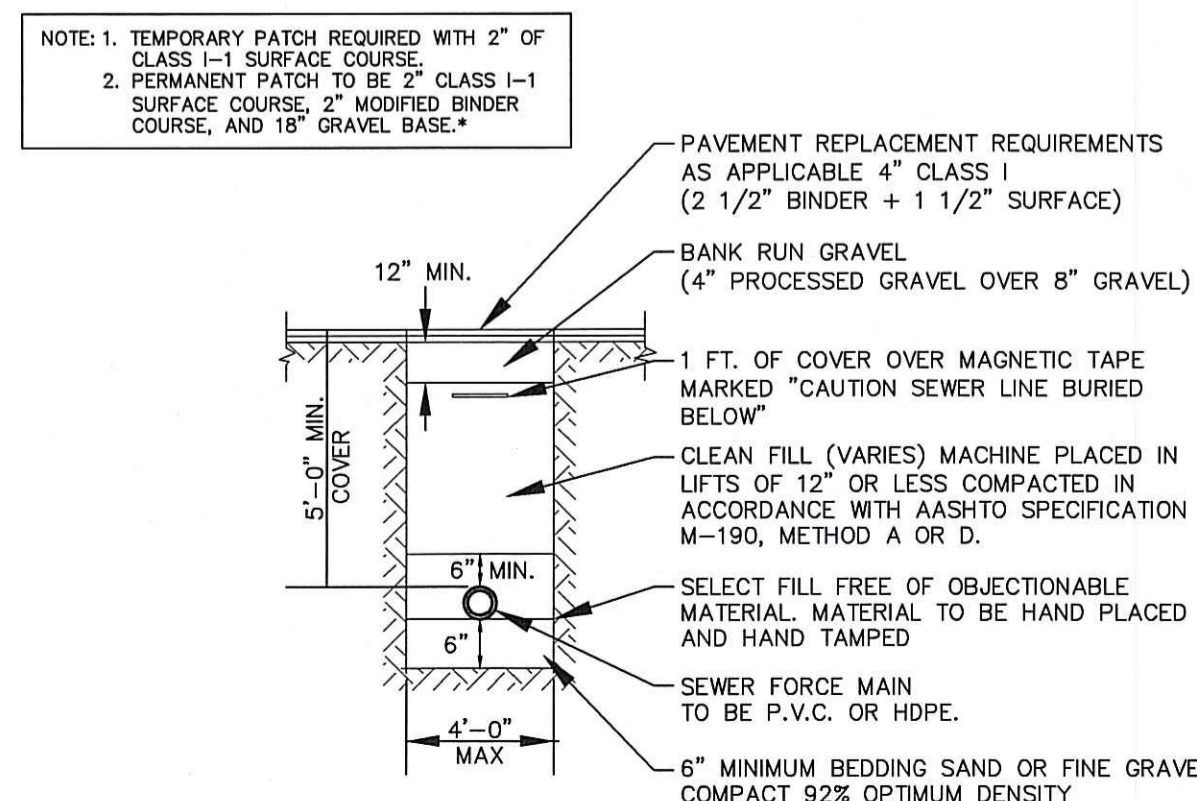
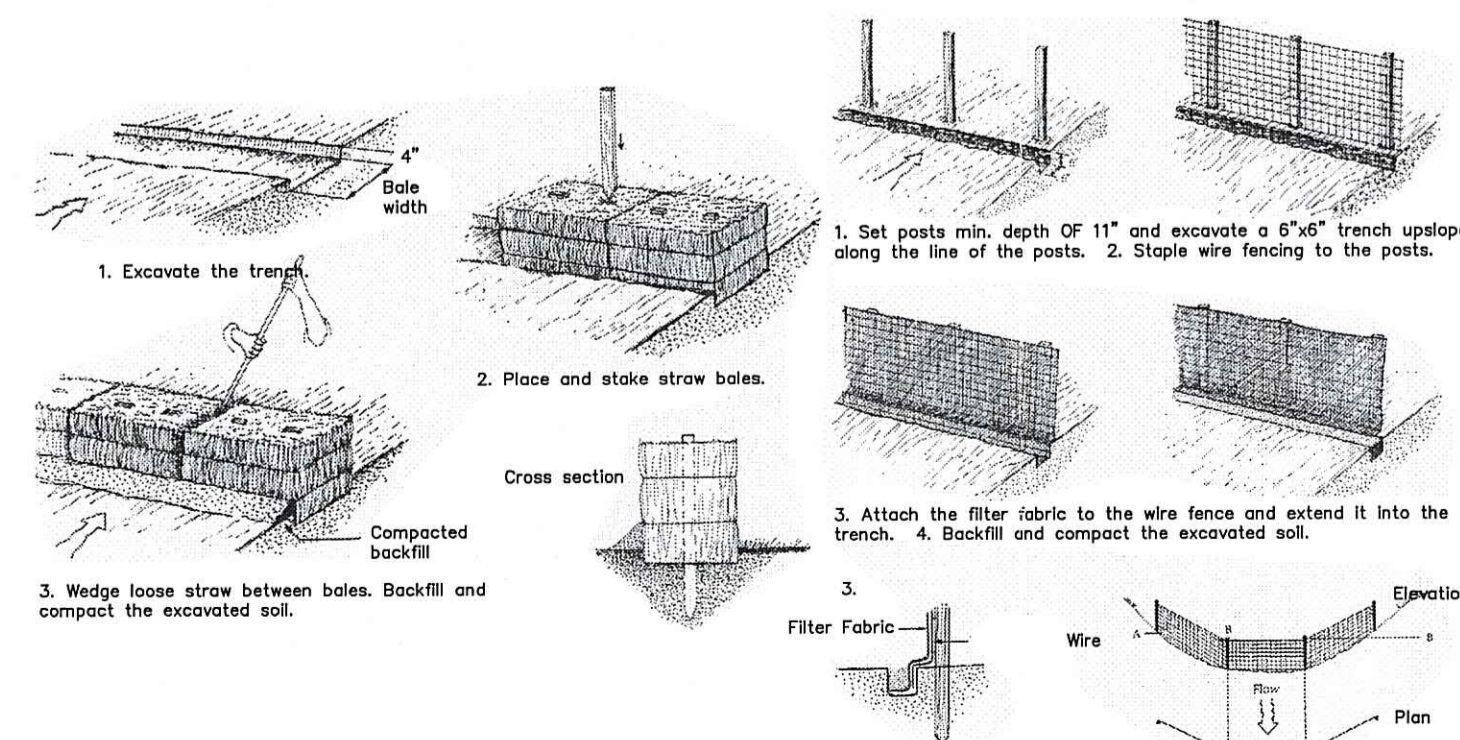
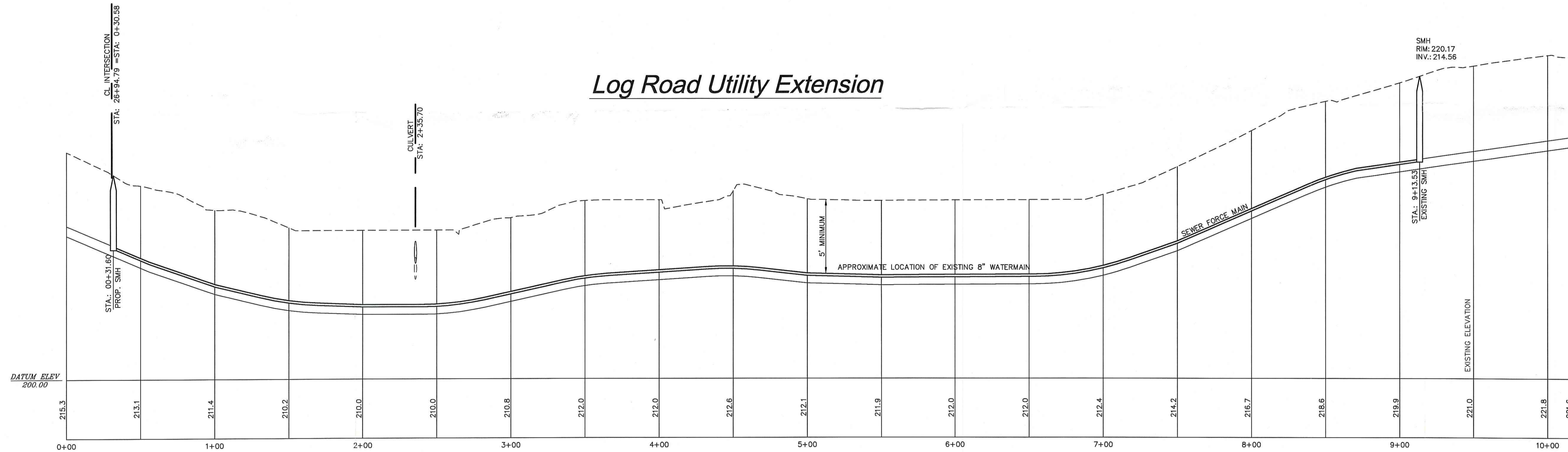


General Construction Notes

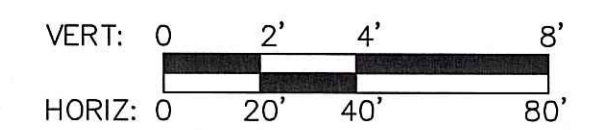
1. THE CONTRACTOR IS TO NOTIFY DIG SAFE PRIOR TO THE START OF CONSTRUCTION.
2. THE CONTRACTOR IS TO SUBMIT A CONSTRUCTION TRAFFIC SAFETY PLAN TO THE DIRECTOR OF PUBLIC SAFETY PRIOR TO THE START OF CONSTRUCTION. APPROVAL OF SUCH PLAN IS REQUIRED.
3. NO STOCKPILING OF MATERIAL IS TO BE ALLOWED WITHIN A PUBLIC R.O.W. NO OPEN TRENCHES ARE TO BE LEFT OVERNIGHT.
4. ALL LOAM IN DISTURBED AREAS TO BE STOCKPILED FOR FUTURE USE. CUT & FILL CALCULATIONS TO BE VERIFIED BY THE CONTRACTOR.
5. CONTRACTOR TO OBTAIN ALL FEDERAL, STATE, AND MUNICIPAL APPROVALS PRIOR TO THE START OF CONSTRUCTION.
6. THE CONTRACTOR IS TO NOTIFY THE DIRECTOR OF PUBLIC WORKS, THE TOWN ENGINEER, AND R.I. DEPT. OF ENVIRONMENTAL MANAGEMENT AT LEAST 48 HOURS PRIOR TO THE START OF CONSTRUCTION.
7. ALL WORK PERFORMED HEREIN SHALL BE GOVERNED BY THE RHODE ISLAND STANDARD SPECIFICATION FOR ROAD AND BRIDGE CONSTRUCTION AND TOWN OF SMITHFIELD STANDARD SPECIFICATIONS AND DETAILS.
8. ALL EXISTING UTILITIES SHOWN ARE FROM VISIBLE INFORMATION, DRAWINGS BY OTHERS, OR INFORMATION PROVIDED TO DEA AND ARE SUBJECT TO CHANGE. NO ONE SHOULD RELY ON THE UTILITY LOCATIONS SHOWN FOR CONSTRUCTION AND DIG SAFE SHOULD BE NOTIFIED PRIOR TO ANY WORK.



Log Road Utility Extension



DEPARTMENT OF ENVIRONMENTAL MANAGEMENT
OFFICE OF WATER RESOURCES
FRESHWATER WETLANDS PROGRAM
REVIEWED SITE PLAN APPLICATION NO.: 07-0225
DATED SEP 13 2007
SEE LETTER OF SAME DATE



Preliminary Submission

OFF SITE SEWER PLAN

Sand Trace Subdivision

ASSESSOR'S PLAT 46 LOT 10
SMITHFIELD, RHODE ISLAND

CHRISTOPHER A. DURANEL
No. 5013
REGISTERED PROFESSIONAL ENGINEER

Sheet 1 of 1

Applicant:
Frank Simonelli
108 Appian Way
Esmont, R.I. 02917
(401) 232-2201

Engineer:
DiPrete Engineering Associates, Inc.
Engineering, Surveying, and Planning Consultants
Two Stafford Court
Cranston, Rhode Island 02920
Tel: (401) 943-1000 Fax: (401) 464-6006

NO.	DATE	DESCRIPTION	BY

DATE: NOVEMBER, 2005
DWG. BY: J.M.D.

Copyright 2005 by DiPrete Engineering Associates, Inc.

M:\Engineers\Projects\02-14-017 Old Log Road\Drawings\02-14-017 Prelim IMD R4 Submission Town Comments.dwg, 5/2/2007 4:43:16 PM, dmsad, Cee TD5600.pcd