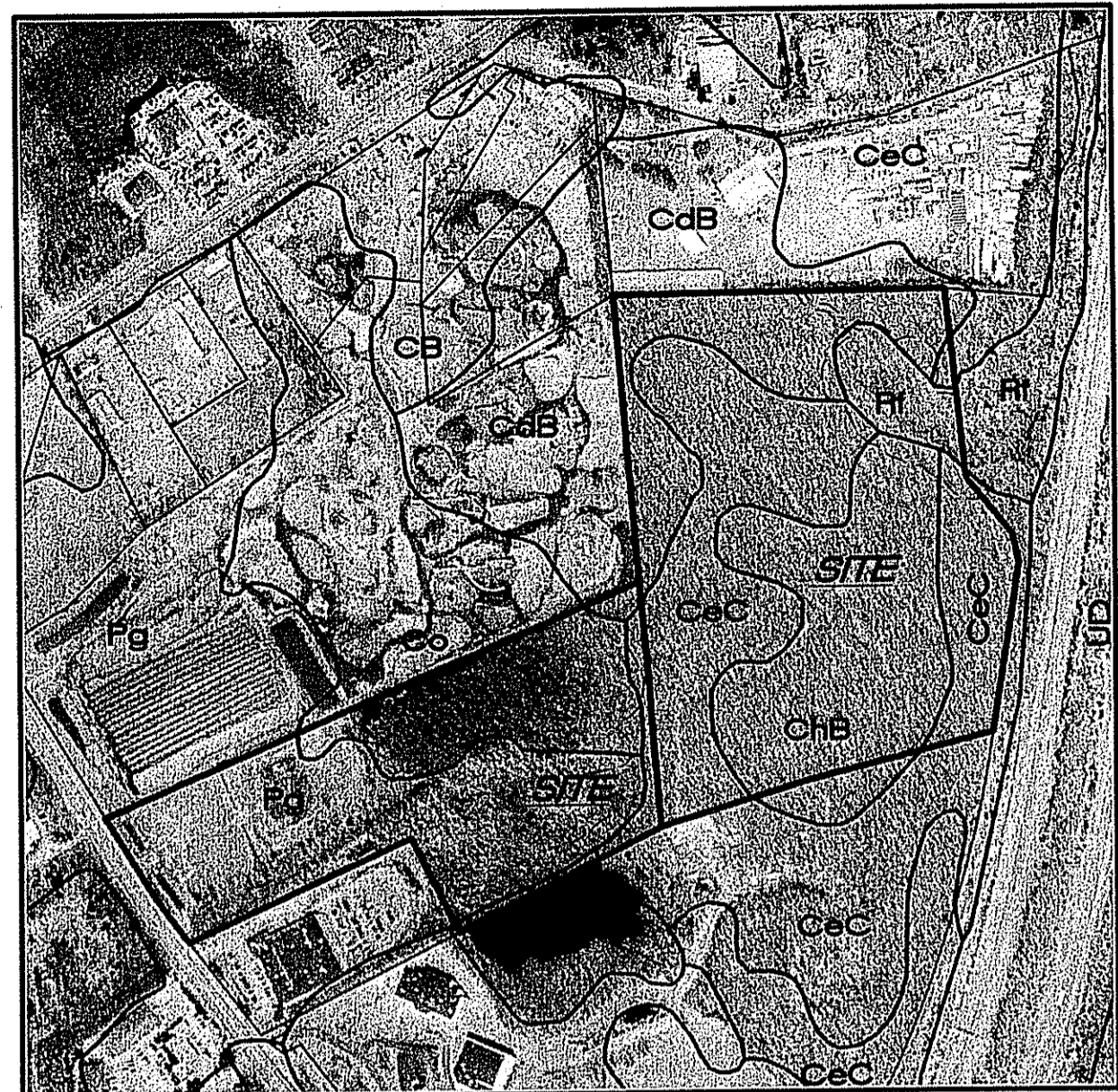


10/23/07 ACCESS ROAD PER DEEM WETLANDS FILE #4886 & DEM COMPOST FILE #4; ADD SHEET 7



REFERENCE: SOIL SURVEY OF RHODE ISLAND MAP SHEETS 17 AND 23

**SOIL SURVEY MAP**  
SCALE: 1" = 500'

**SOIL SURVEY DATA:**

SYMBOL	NAME
CdB	CANTON AND CHARLTON FINE SANDY LOAMS, 3 TO 8 PERCENT SLOPES
CdC	CANTON AND CHARLTON FINE SANDY LOAMS, VERY ROCKY, 3 TO 15 PERCENT SLOPES
ChB	CANTON AND CHARLTON VERY STONY FINE SANDY LOAMS, 3 TO 8 PERCENT SLOPES
Cc	CARLISLE MUCK
Pg	PITS, GRAVEL
Rf	RIDGEBURY, WHITMAN, AND LEICESTER EXTREMELY STONY FINE SANDY LOAMS

**NOTE:**  
SOIL AREA'S ARE APPROXIMATE ONLY, AND BASED ON THE SOIL SURVEY OF RHODE ISLAND 1981, BY THE UNITED STATES DEPARTMENT OF AGRICULTURE, SOIL CONSERVATION SERVICE.

**OWNER/DEVELOPER:**

JAKE DEVELOPMENT CO., LLC.  
295 WASHINGTON HIGHWAY  
SMITHFIELD, RHODE ISLAND 02917

**DEVELOPMENT SCHEDULE:**

THE PROJECT IS PROPOSED TO BE BUILT IN ONE PHASE

**INDEX:**

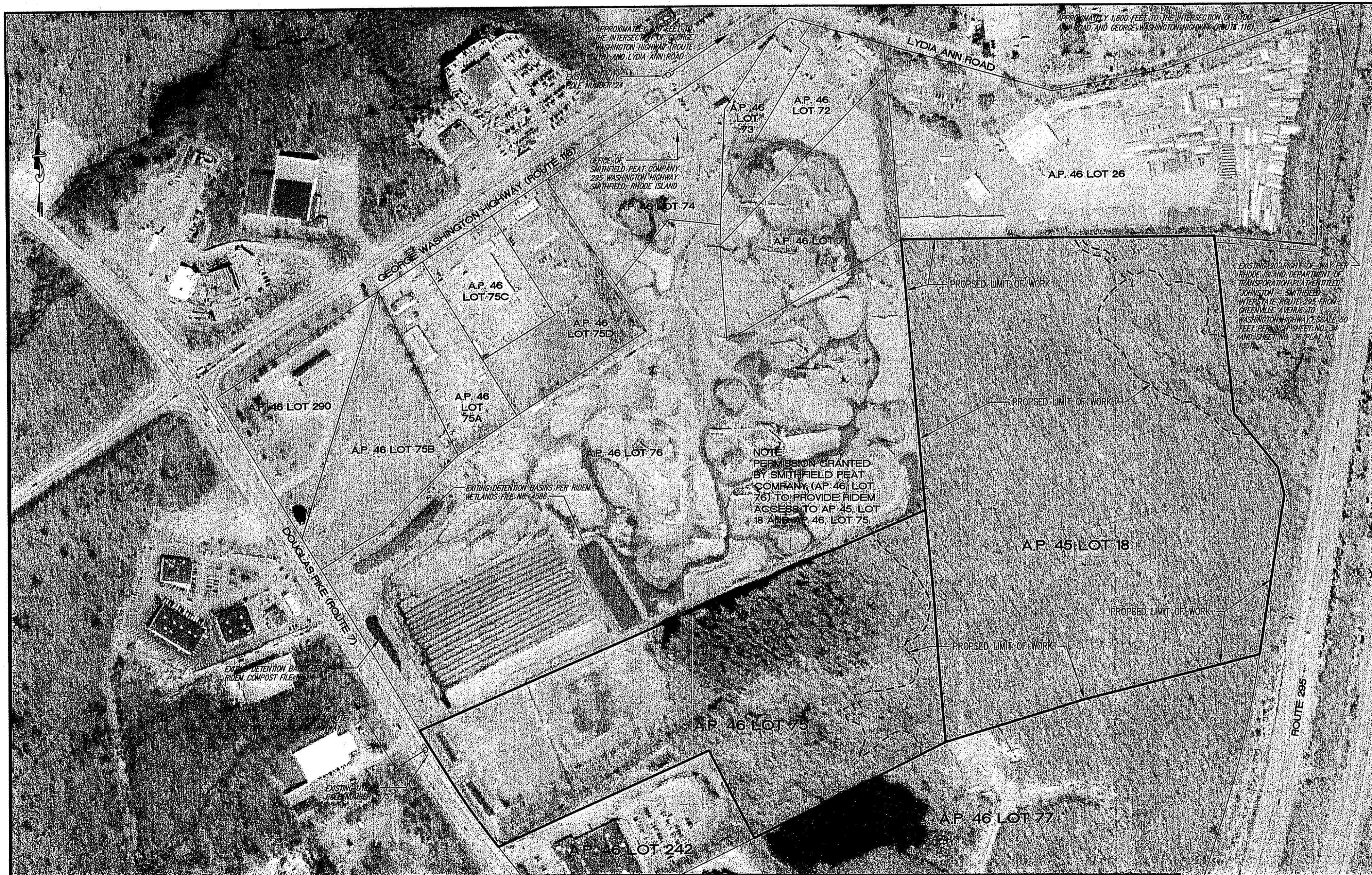
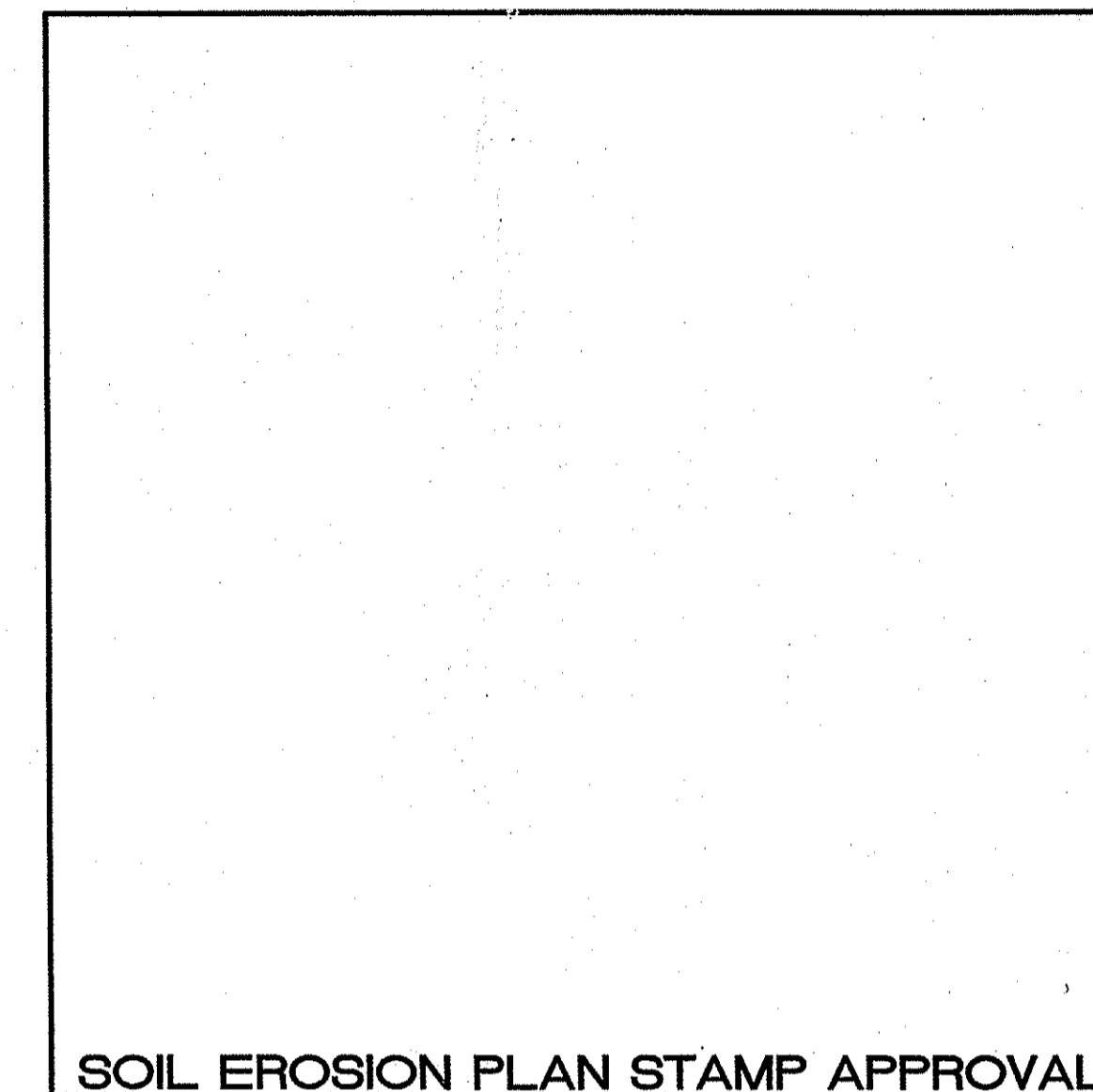
SHEET	DESCRIPTION
1	COVER SHEET
2	EXISTING CONDITIONS
3	SITE GRADING PLAN
4	NOTES AND DETAILS
5	SECTIONS - 1
6	SECTIONS - 2

# SOIL EROSION PLAN

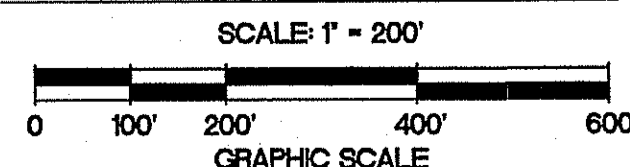
## ASSESSOR'S PLAT 45, LOT 18 AND ASSESSOR'S PLAT 46, LOT 75

### GEORGE WASHINGTON HIGHWAY (ROUTE 116) SMITHFIELD, RHODE ISLAND

MAY 2007

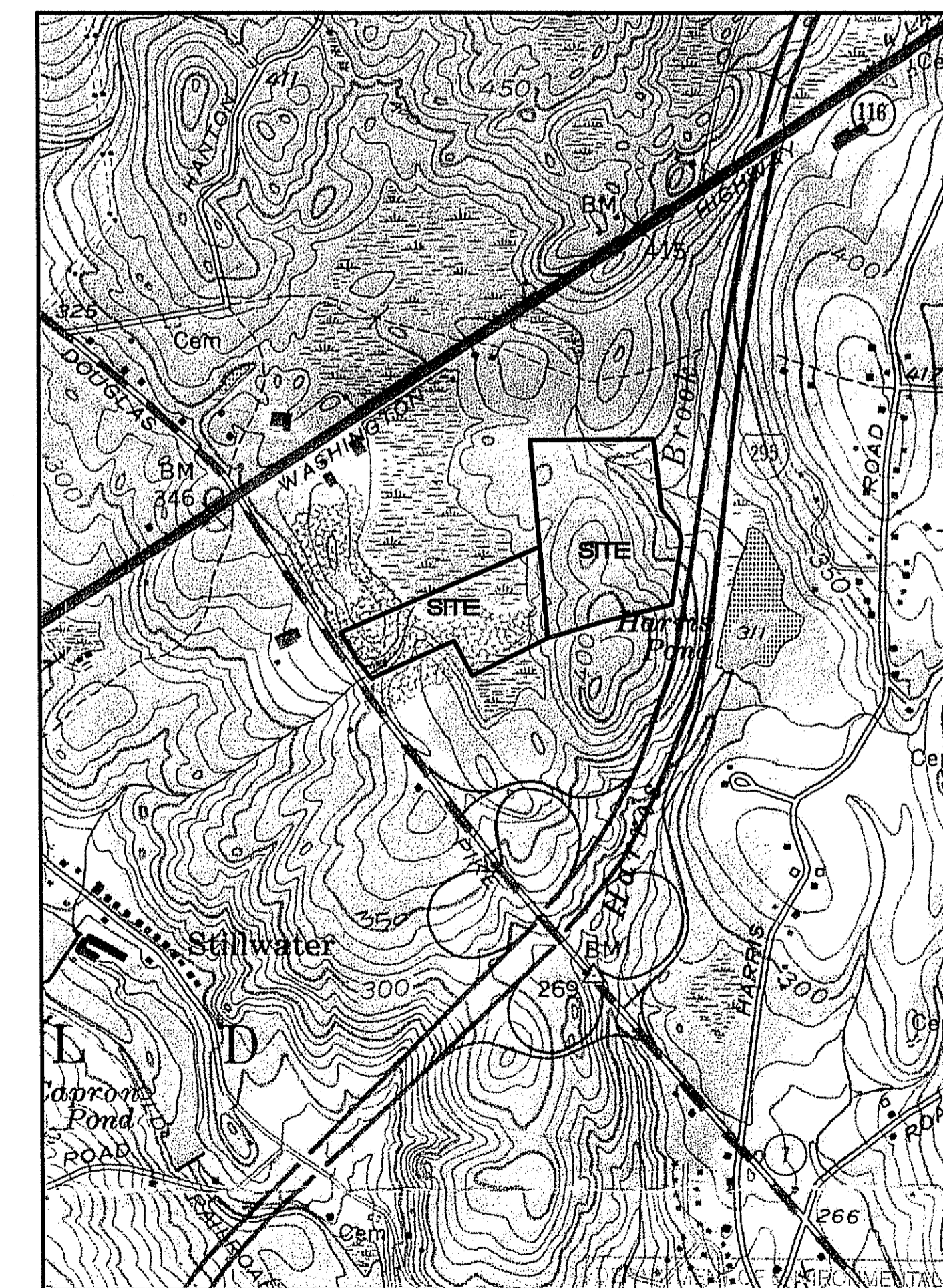


**AERIAL PHOTOGRAPH**  
SCALE: 1" = 200'



**REFERENCE:**

AERIAL PHOTOGRAPH PROVIDED BY THE RHODE ISLAND GEOGRAPHIC INFORMATION SYSTEM (RIGIS). THIS IMAGE WAS CREATED FROM AERIAL PHOTOGRAPHY TAKEN IN APRIL OF 2004 FOR NATIONAL GRID-USA AND THE RHODE ISLAND DEPARTMENT OF TRANSPORTATION. IMAGE FILE: 3232.sld



**LOCUS PLAN**  
SCALE: 1"=1000'

REFERENCE: USGS GEORGEVILLE, RI MAP QUADRANGLE  
DATE: JUN 9 2008 FILE # 07-0216  
NO CHANGES ALLOWED WITHOUT PRIOR APPROVAL  
APPROVED PLANS MUST BE AT CONSTRUCTION SITE

NO.	DATE	REVISION
1	10/23/07	ACCESS ROAD PER DEEM WETLANDS FILE #4886 & DEM COMPOST FILE #4; ADD SHEET 7
2	04/07/08	REMOVE ACCESS ROAD & BUILD-OUT PLAN

JOHN P. CAITO  
Professional Engineer  
No. 00893-2382  
401-615-8600  
FAX: 401-615-8606

CIVIL ENGINEERS  
LAND PLANNERS  
**Caito** CORPORATION

PROJECT NO: 131495  
DATE: MAY 2007  
SCALE: AS NOTED  
DESIGNED BY: S.Q.T.  
DRAWN BY: J.M.M.  
CHECKED BY: J.P.C.

COVER SHEET  
**SOIL EROSION PLAN**  
ASSESSOR'S PLAT 45, LOT 18  
AND ASSESSOR'S PLAT 46, LOT 75  
GEORGE WASHINGTON HIGHWAY  
SMITHFIELD, RHODE ISLAND  
PREPARED FOR  
JAKE DEVELOPMENT CO., LLC

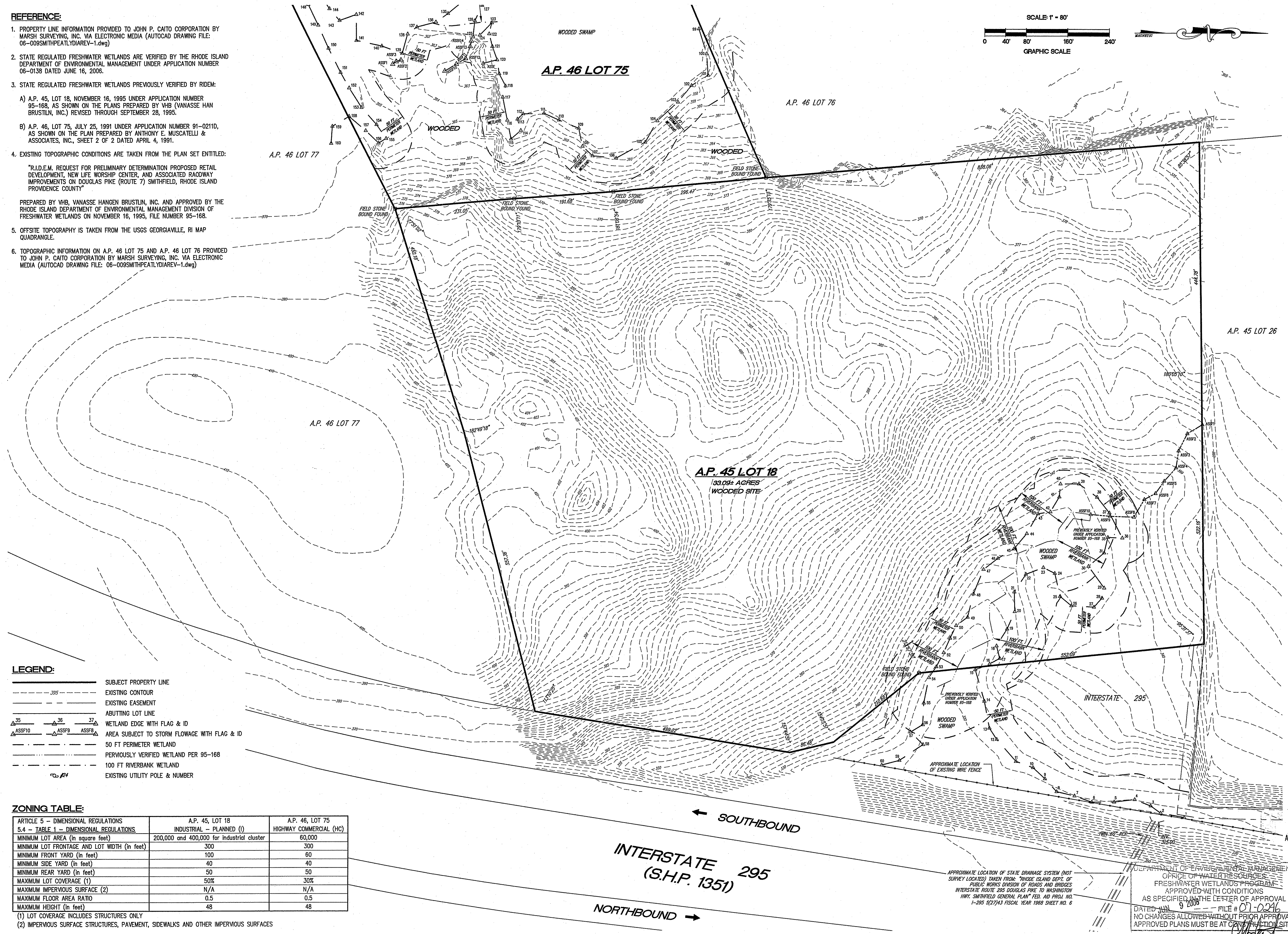
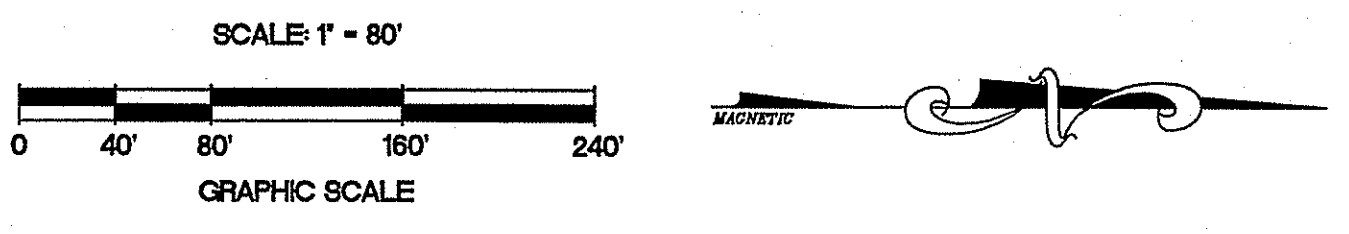
DRAWING NUMBER  
**1**  
SHEET 1 OF 6

© 2008 JOHN P. CAITO CORPORATION

1405 SHEET 2 3 4 5 & 6 (SOIL EROSION) 05-2007 (DISC 1040)

**REFERENCE:**

- PROPERTY LINE INFORMATION PROVIDED TO JOHN P. CAITO CORPORATION BY MARSH SURVEYING, INC. VIA ELECTRONIC MEDIA (AUTOCAD DRAWING FILE: 06-009SMITHPEATLYDIAREV-1.dwg)
  - STATE REGULATED FRESHWATER WETLANDS ARE VERIFIED BY THE RHODE ISLAND DEPARTMENT OF ENVIRONMENTAL MANAGEMENT UNDER APPLICATION NUMBER 06-0138 DATED JUNE 16, 2006.
  - STATE REGULATED FRESHWATER WETLANDS PREVIOUSLY VERIFIED BY RIDEM:
    - A.P. 45, LOT 18, NOVEMBER 16, 1995 UNDER APPLICATION NUMBER 95-168, AS SHOWN ON THE PLANS PREPARED BY VHB (VANASSE HAN BRUSTLIN, INC.) REVISED THROUGH SEPTEMBER 28, 1995.
    - A.P. 46, LOT 75, JULY 25, 1991 UNDER APPLICATION NUMBER 91-02110, AS SHOWN ON THE PLAN PREPARED BY ANTHONY E. MUSCATELLI & ASSOCIATES, INC., SHEET 2 OF 2 DATED APRIL 4, 1991.
  - EXISTING TOPOGRAPHIC CONDITIONS ARE TAKEN FROM THE PLAN SET ENTITLED: "R.I.D.E.M. REQUEST FOR PRELIMINARY DETERMINATION PROPOSED RETAIL DEVELOPMENT, NEW LIFE WORSHIP CENTER, AND ASSOCIATED ROADWAY IMPROVEMENTS ON DOUGLAS PIKE (ROUTE 7) SMITHFIELD, RHODE ISLAND PROVIDENCE COUNTY"
- PREPARED BY VHB, VANASSE HAN BRUSTLIN, INC. AND APPROVED BY THE RHODE ISLAND DEPARTMENT OF ENVIRONMENTAL MANAGEMENT DIVISION OF FRESHWATER WETLANDS ON NOVEMBER 16, 1995, FILE NUMBER 95-168.
- OFFSITE TOPOGRAPHY IS TAKEN FROM THE USGS GEORGIATVILLE, RI MAP QUADRANGLE.
  - TOPOGRAPHIC INFORMATION ON A.P. 46 LOT 75 AND A.P. 46 LOT 76 PROVIDED TO JOHN P. CAITO CORPORATION BY MARSH SURVEYING, INC. VIA ELECTRONIC MEDIA (AUTOCAD DRAWING FILE: 06-009SMITHPEATLYDIAREV-1.dwg)



**LEGEND:**

- SUBJECT PROPERTY LINE
- - - - - EXISTING CONTOUR
- - - - - EXISTING EASEMENT
- - - - - ABUTTING LOT LINE
- ▲ 35 ▲ 36 ▲ 37 WETLAND EDGE WITH FLAG & ID
- ▲ ASS10 ▲ ASS9 ▲ ASS8 AREA SUBJECT TO STORM FLOWAGE WITH FLAG & ID
- 50 FT PERIMETER WETLAND
- PERVIOUSLY VERIFIED WETLAND PER 95-168
- 100 FT RIVERBANK WETLAND
- 24 EXISTING UTILITY POLE & NUMBER

**ZONING TABLE:**

ARTICLE 5 - DIMENSIONAL REGULATIONS 5.4 - TABLE 1 - DIMENSIONAL REGULATIONS	A.P. 45, LOT 18 INDUSTRIAL - PLANNED (I)	A.P. 46, LOT 75 HIGHWAY COMMERCIAL (HC)
MINIMUM LOT AREA (in square feet)	200,000 and 400,000 for industrial cluster	60,000
MINIMUM LOT FRONTAGE AND LOT WIDTH (in feet)	300	300
MINIMUM FRONT YARD (in feet)	100	60
MINIMUM SIDE YARD (in feet)	40	40
MINIMUM REAR YARD (in feet)	50	50
MAXIMUM LOT COVERAGE (1)	50%	30%
MAXIMUM IMPERVIOUS SURFACE (2)	N/A	N/A
MAXIMUM FLOOR AREA RATIO	0.5	0.5
MAXIMUM HEIGHT (in feet)	48	48

(1) LOT COVERAGE INCLUDES STRUCTURES ONLY  
 (2) IMPERVIOUS SURFACE STRUCTURES, PAVEMENT, SIDEWALKS AND OTHER IMPERVIOUS SURFACES

NO.	DATE	REVISION

JOHN P. CAITO  
 No. 2388  
 PROFESSIONAL ENGINEER

CIVIL ENGINEERS  
 JOHN P. CAITO CORPORATION  
 LAND PLANNERS  
 141 JAMES P. MURPHY HIGHWAY  
 WEST WARWICK, RHODE ISLAND  
 02893-2388  
 401-615-8600  
 fax: 401-615-8606

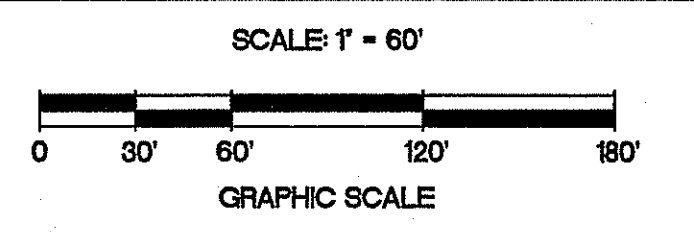
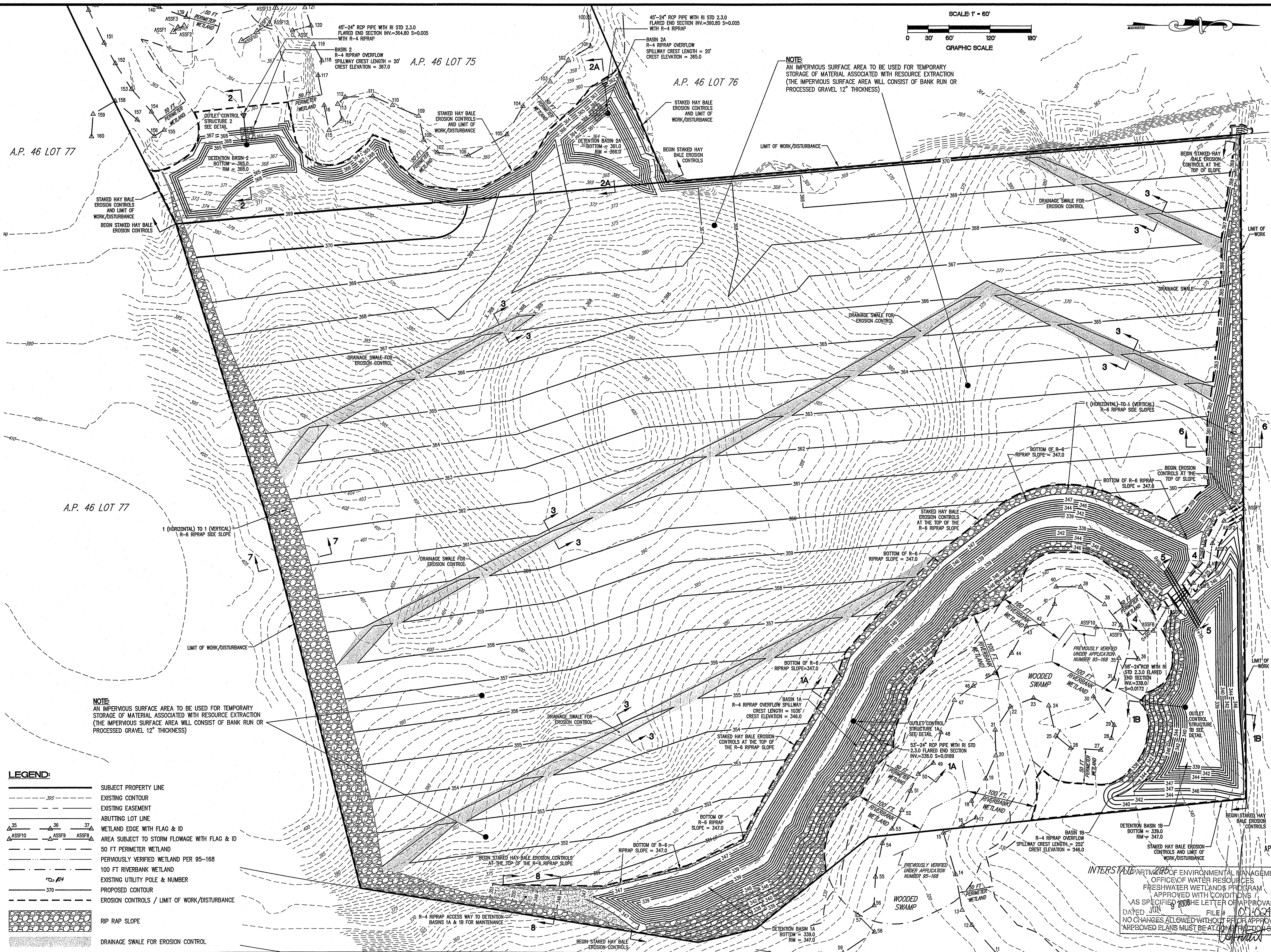
PROJECT NO: 131495  
 DATE: MAY 2007  
 SCALE: 1" = 80'  
 DESIGNED BY: S.G.T.  
 DRAWN BY: J.M.M.  
 CHECKED BY: J.P.C.

EXISTING CONDITIONS  
**SOIL EROSION PLAN**  
 ASSESSOR'S PLAT 45, LOT 18  
 AND ASSESSOR'S PLAT 46, LOT 75  
 GEORGE WASHINGTON HIGHWAY  
 SMITHFIELD  
 PREPARED FOR  
**JAKE DEVELOPMENT CO., LLC**

APR 0 2008  
 DEPARTMENT OF ENVIRONMENTAL MANAGEMENT  
 OFFICE OF WATER RESOURCES  
 FRESHWATER WETLANDS PROGRAM  
 APPROVED WITH CONDITIONS  
 AS SPECIFIED IN THE LETTER OF APPROVAL  
 DATED 4/10/08 FILE # 07-0246  
 NO CHANGES ALLOWED WITHOUT PRIOR APPROVAL  
 APPROVED PLANS MUST BE AT CONSTRUCTION SITE

DRAWING NUMBER  
**2**  
 SHEET 2 OF 6

1495 SHEET 2, 3, 4, 5 & 6 (SOIL EROSION) 05-2007\_02.DWG (DSG: 1040)



NOTE:  
AN IMPERVIOUS SURFACE AREA TO BE USED FOR TEMPORARY STORAGE OF MATERIAL ASSOCIATED WITH RESOURCE EXTRACTION (THE IMPERVIOUS SURFACE AREA WILL CONSIST OF BANK RUN OR PROCESSED GRAVEL 12" THICKNESS)

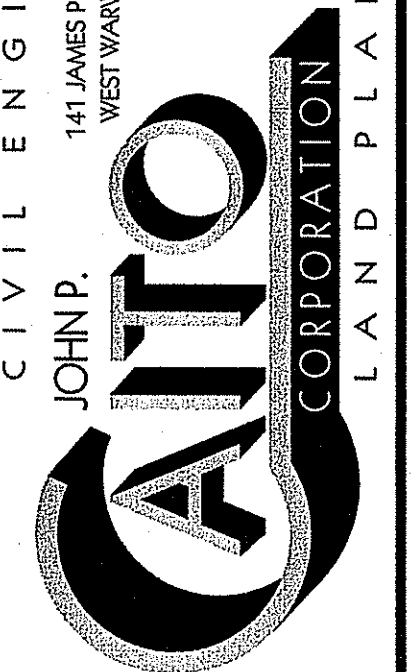
NOTE:  
AN IMPERVIOUS SURFACE AREA TO BE USED FOR TEMPORARY STORAGE OF MATERIAL ASSOCIATED WITH RESOURCE EXTRACTION (THE IMPERVIOUS SURFACE AREA WILL CONSIST OF BANK RUN OR PROCESSED GRAVEL 12" THICKNESS)

- LEGEND:**
- SUBJECT PROPERTY LINE
  - EXISTING CONTOUR
  - EXISTING EASEMENT
  - ABUTTING LOT LINE
  - WETLAND EDGE WITH FLAG & ID
  - AREA SUBJECT TO STORM FLOWAGE WITH FLAG & ID
  - 50 FT PERIMETER WETLAND
  - PREVIOUSLY VERIFIED WETLAND PER 95-168
  - 100 FT RIVERBANK WETLAND
  - EXISTING UTILITY POLE & NUMBER
  - PROPOSED CONTOUR
  - EROSION CONTROLS / LIMIT OF WORK/DISTURBANCE
  - RIP RAP SLOPE
  - DRAINAGE SWALE FOR EROSION CONTROL

NO.	DATE	REVISION
1	10/22/07	REV. 07-1246 COMMENTS
2	04/07/08	REMOVE ACCESS ROAD / ADD NOTE

**JOHN P. CAITO**  
 No. 4398  
 PROFESSIONAL ENGINEER

CIVIL ENGINEERS  
 JOHN P. CAITO CORPORATION  
 LAND PLANNERS  
 141 JAMES P. HURRY HIGHWAY  
 WEST WARWICK, RHODE ISLAND 02893-0388  
 401-515-8600  
 FAX: 401-515-8606

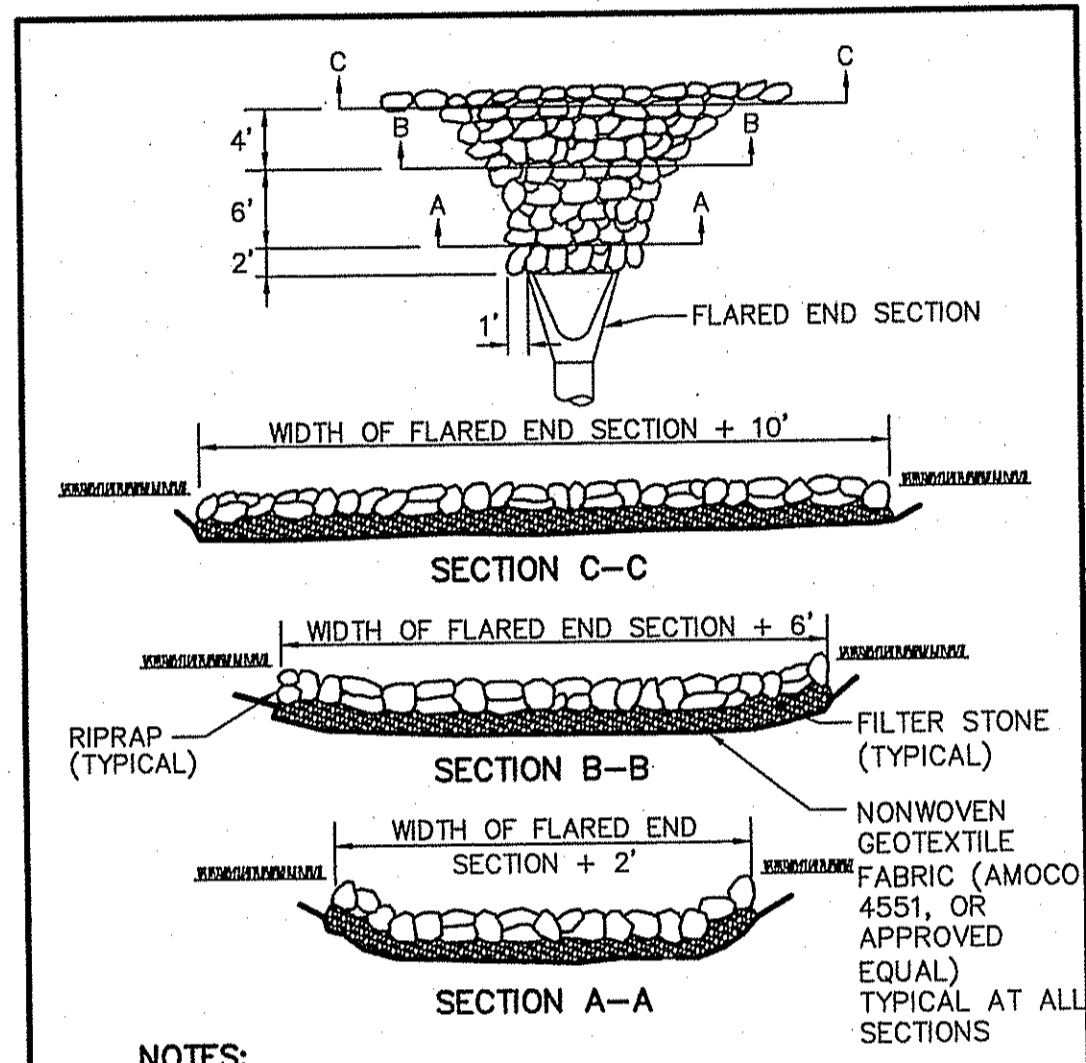
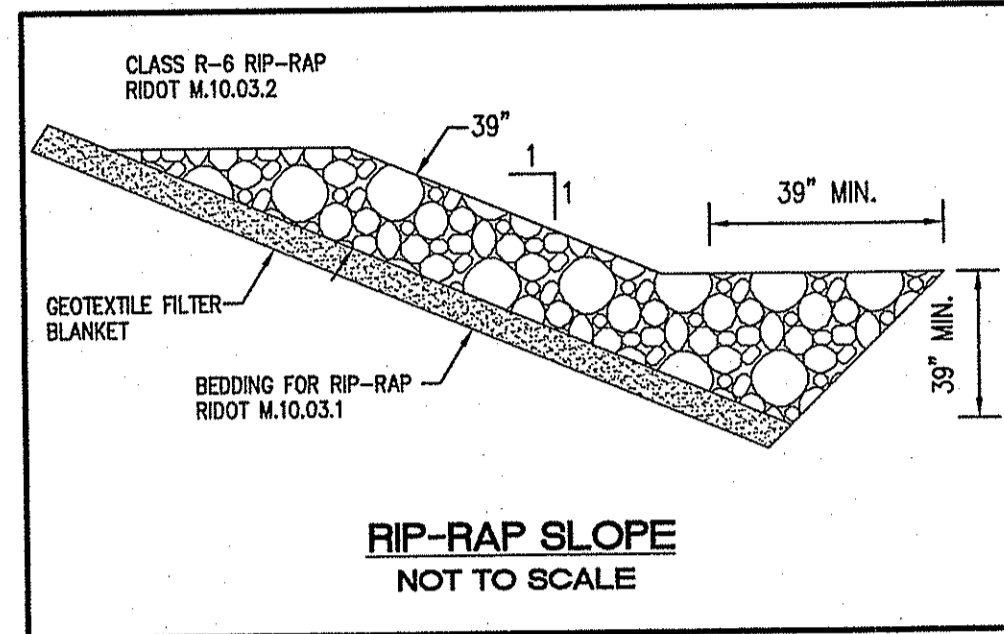
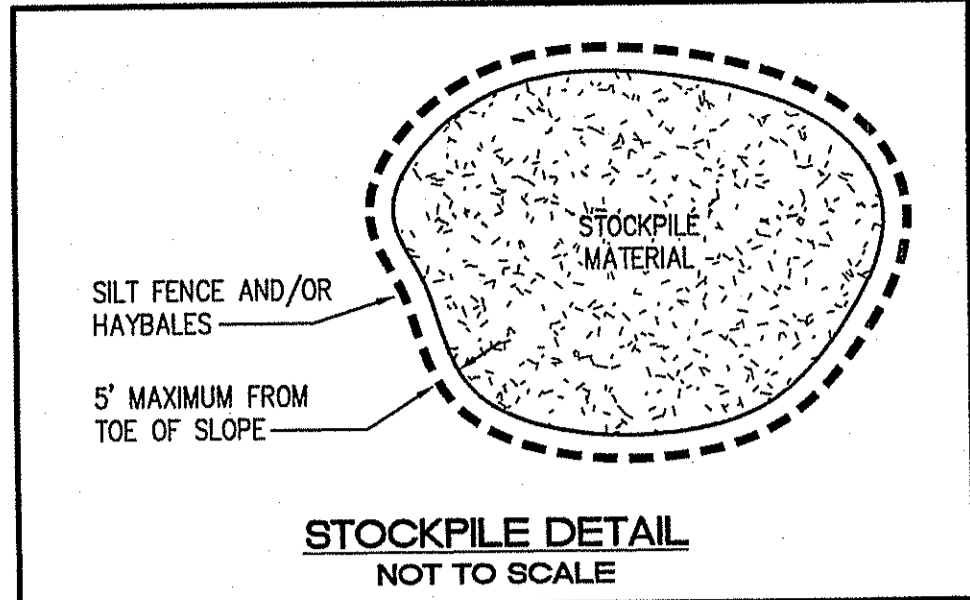
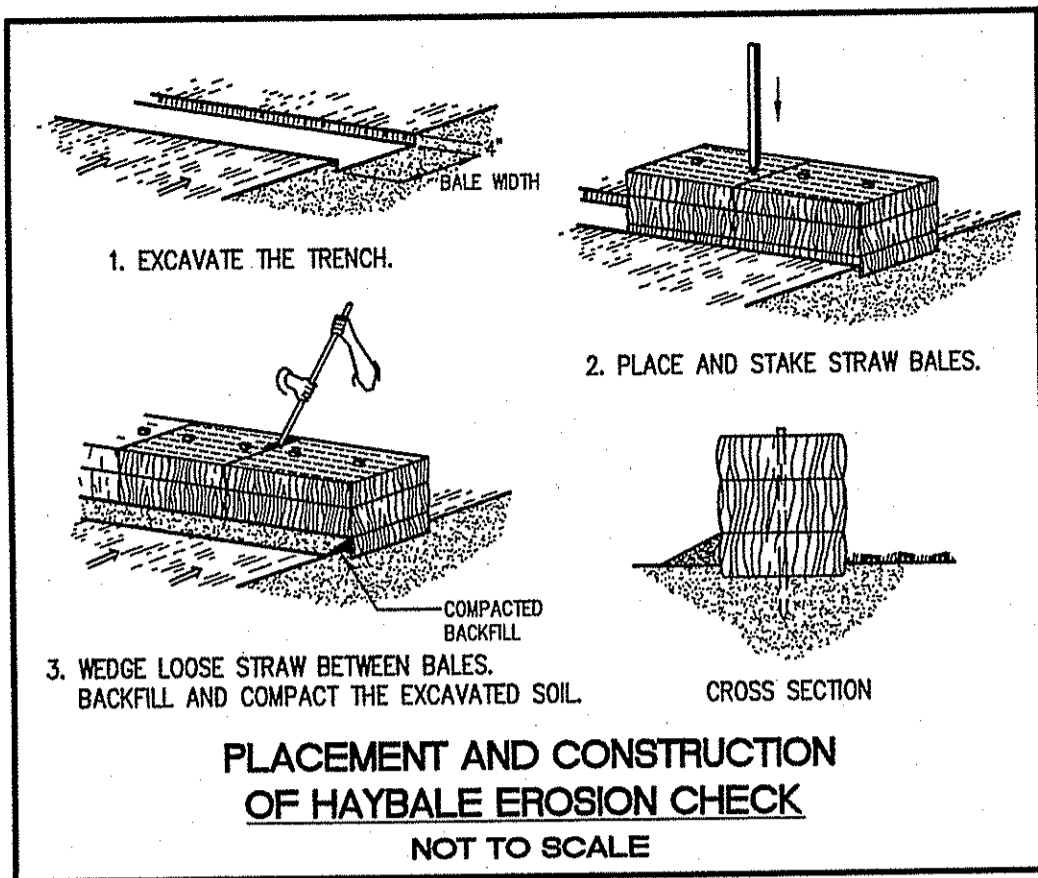


PROJECT NO: 131495  
 DATE: MAY 2007  
 SCALE: 1" = 60'  
 DESIGNED BY: S.G.T.  
 DRAWN BY: J.M.M.  
 CHECKED BY: J.P.C.

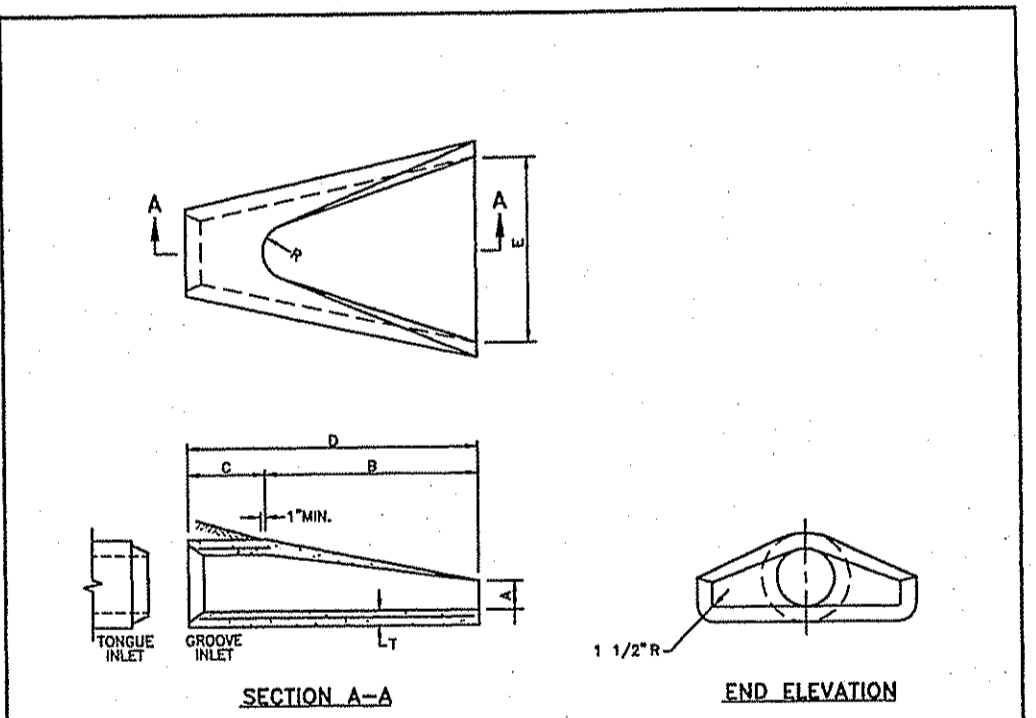
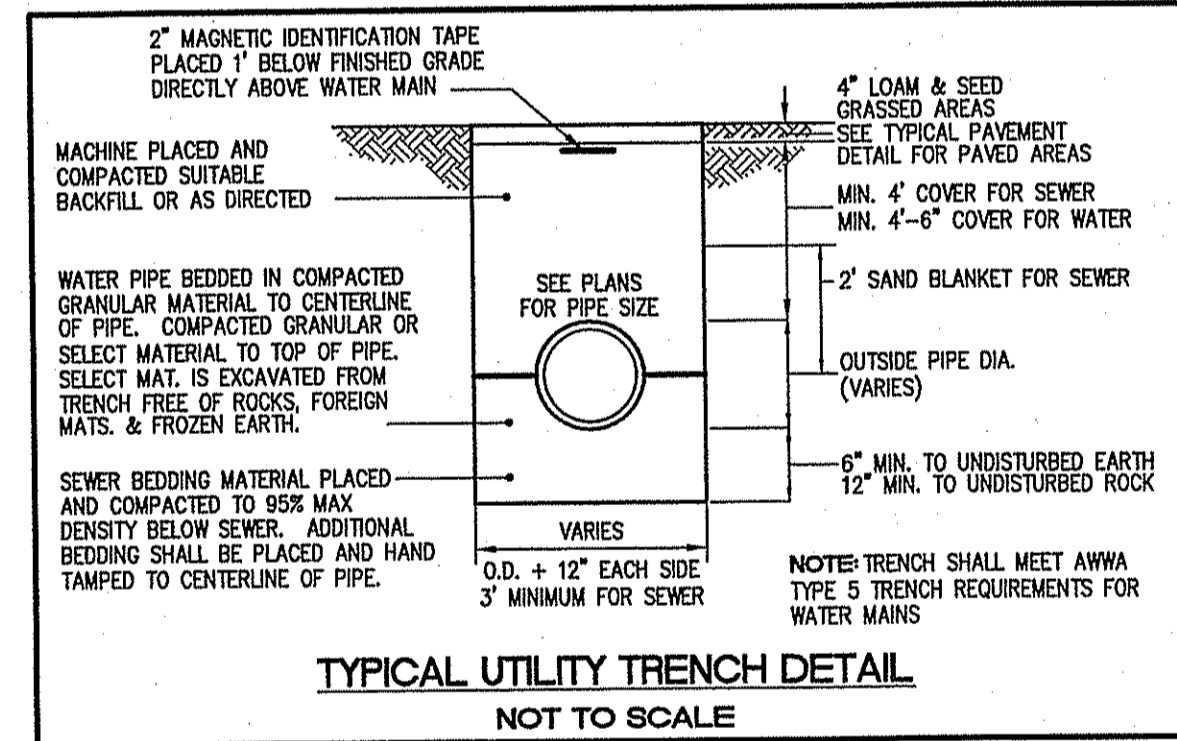
**SITE GRADING PLAN**  
**SOIL EROSION PLAN**  
 ASSESSOR'S PLAT 46, LOT 18  
 AND ASSESSOR'S PLAT 46, LOT 75  
 GEORGE WASHINGTON HIGHWAY  
 PREPARED FOR  
**JAKE DEVELOPMENT CO., LLC**  
 RHODE ISLAND  
 SMITHFIELD

INTERSTATE PART 290 OF ENVIRONMENTAL MANAGEMENT  
 OFFICE OF WATER RESOURCES  
 FRESHWATER WETLANDS PROGRAM  
 APPROVED WITH CONDITIONS  
 AS SPECIFIED IN THE LETTER OF APPROVAL  
 DATED JUN 10 2016 FILE # 0110216  
 NO CHANGES ALLOWED WITHOUT PRIOR APPROVAL  
 APPROVED PLANS MUST BE AT CONSTRUCTION SITE

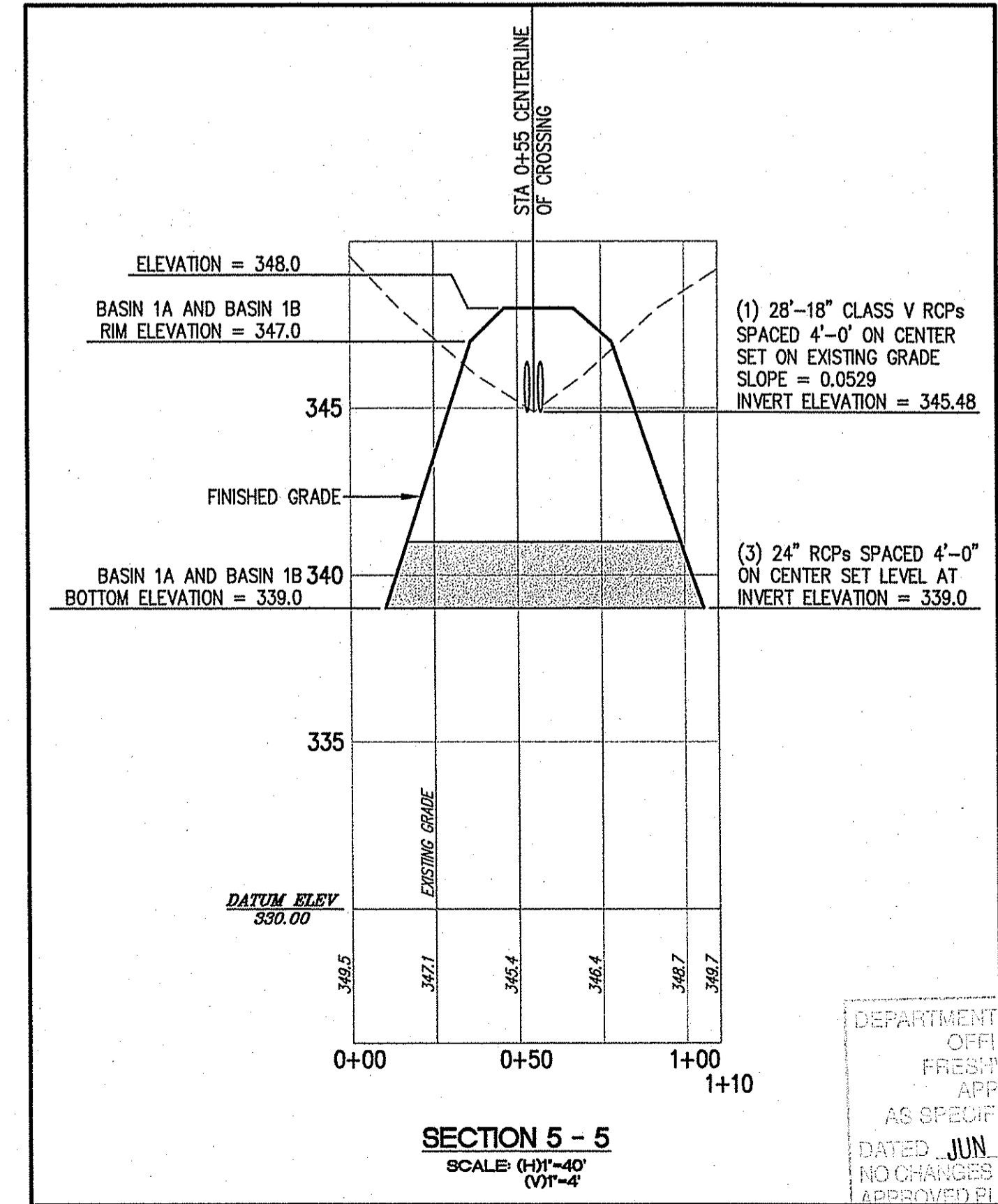
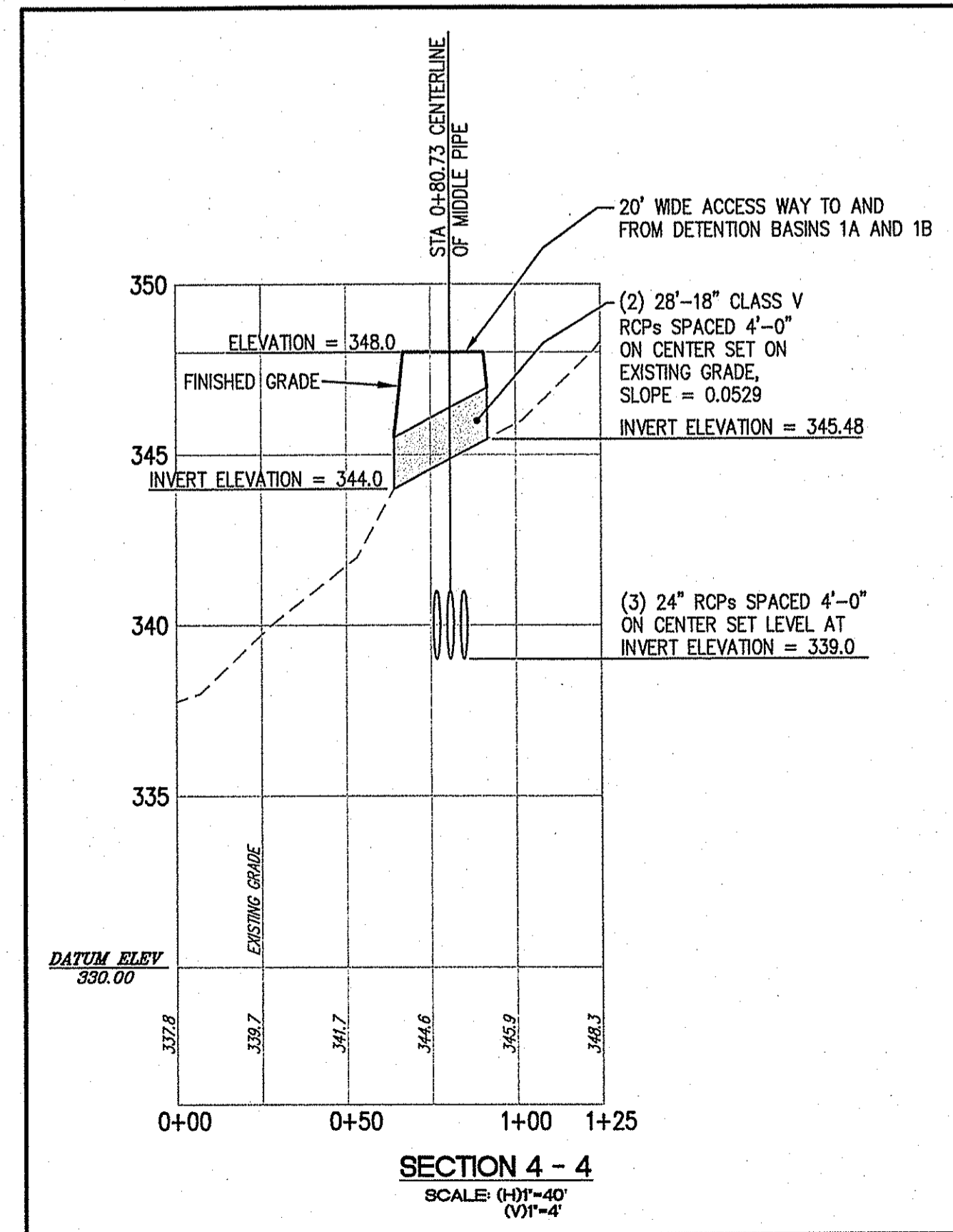
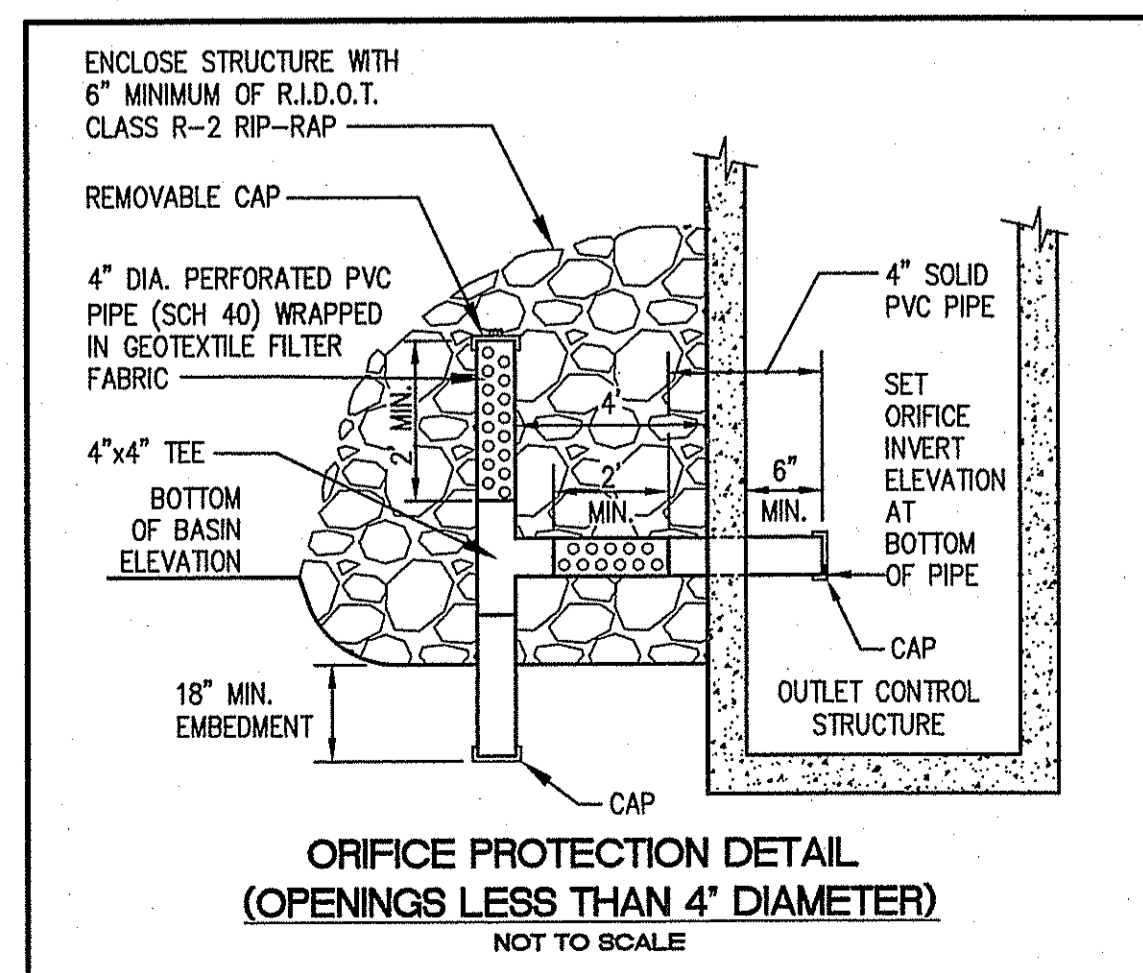
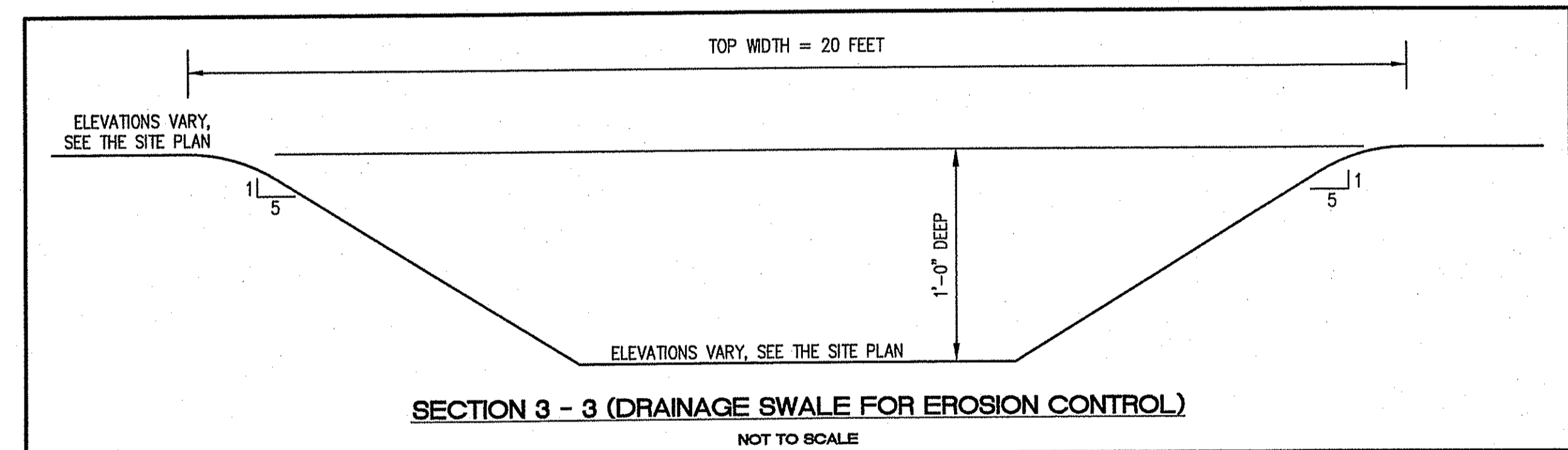
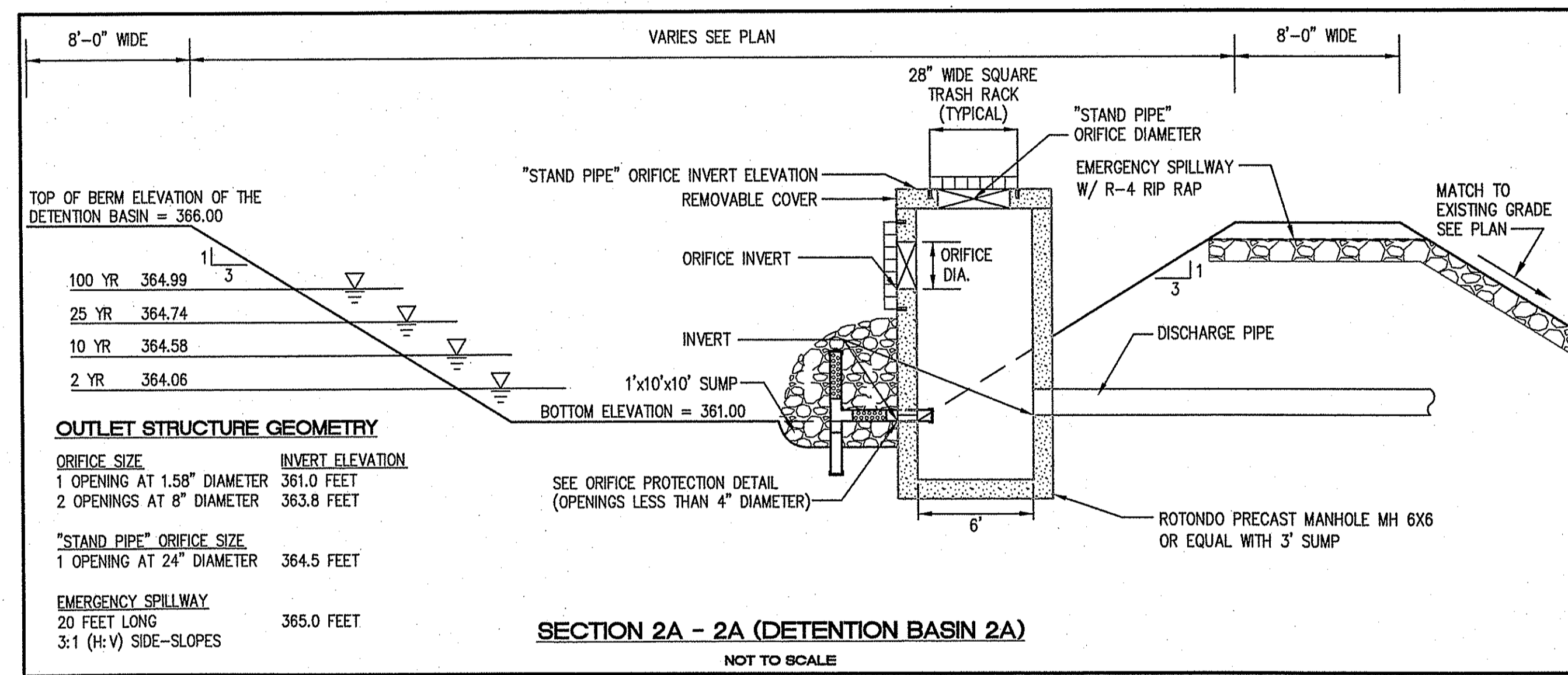
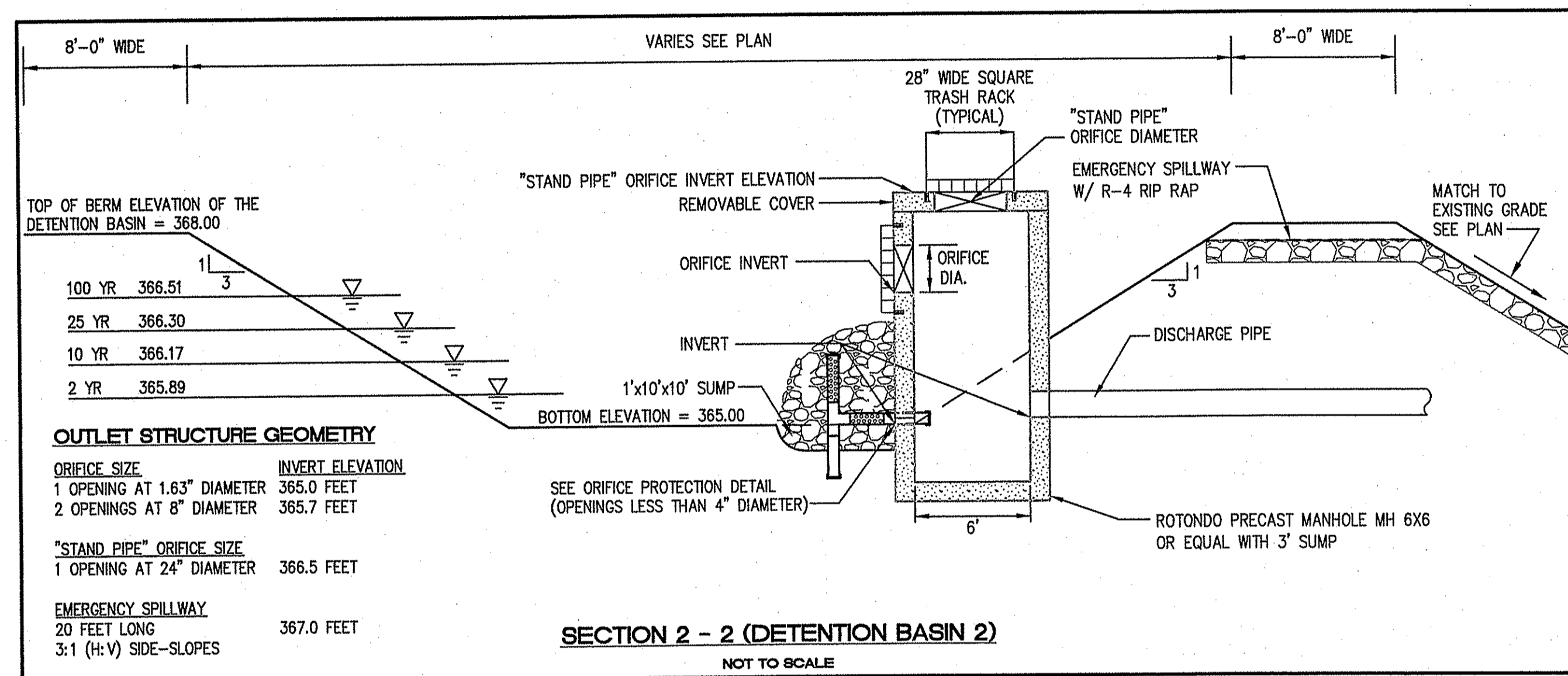
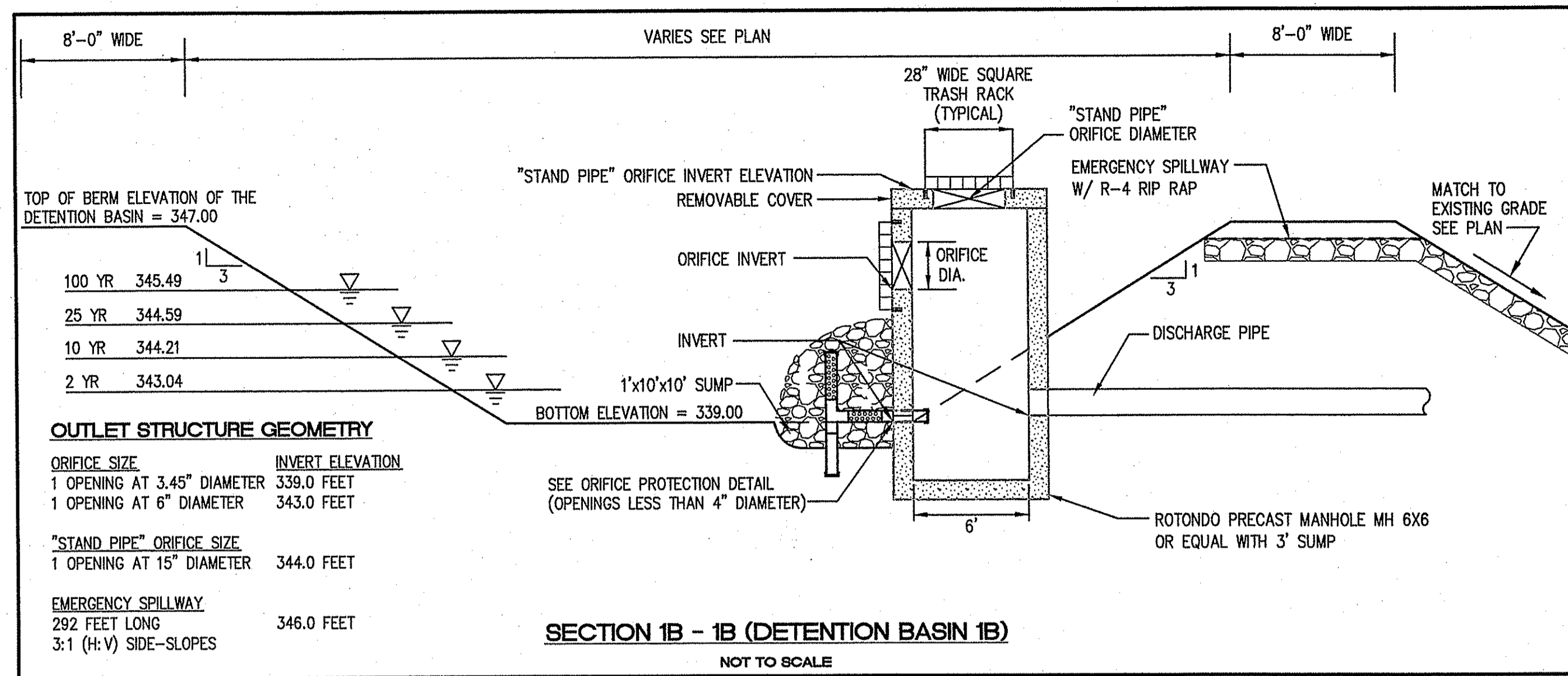
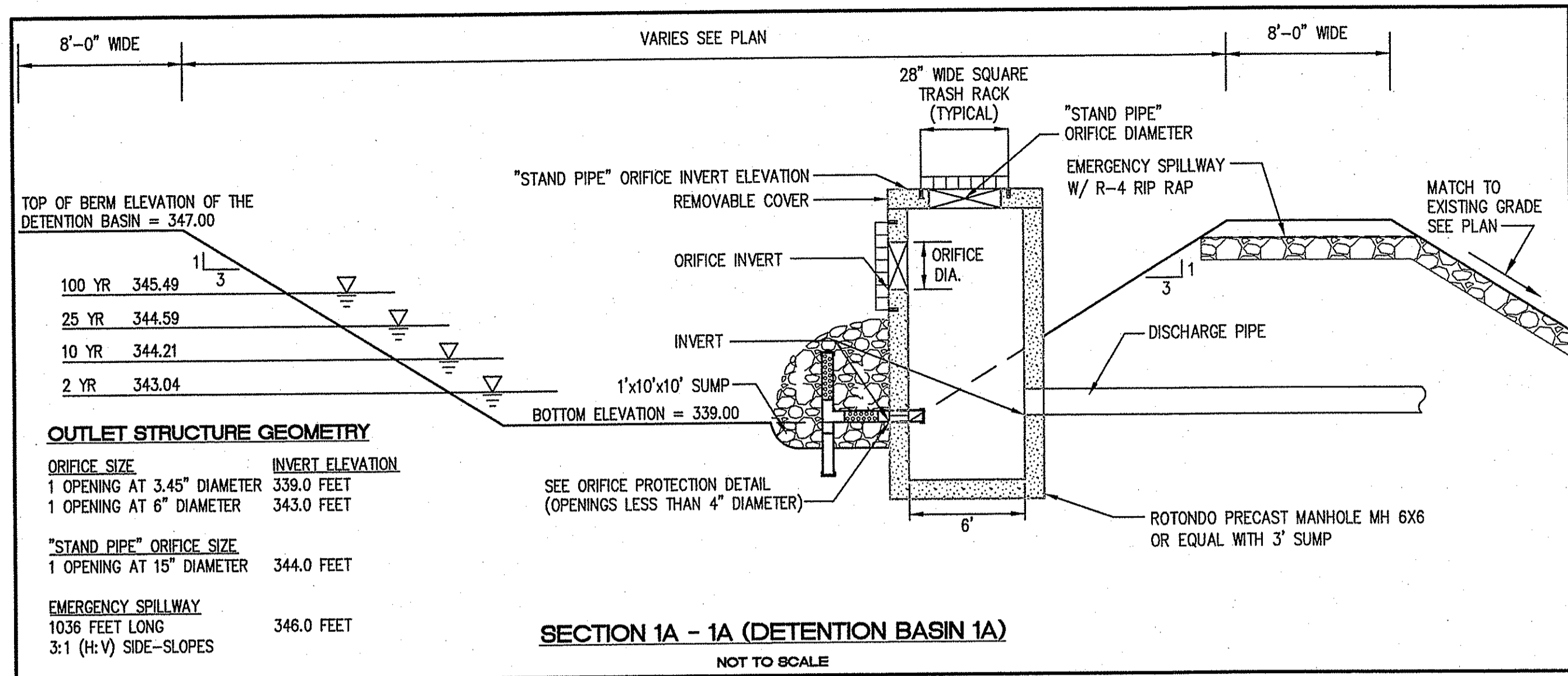
APR 11 2008  
 DRAWING NUMBER  
**3**  
 SHEET 3 OF 6



- NOTES:**
- SEE SITE PLAN FOR CLASS OF RIP-RAP TO BE USED
  - SEE FILTER STONE CHART FOR APPROPRIATE FILTER STONE TYPE AND DEPTH
  - THE MINIMUM THICKNESS OF THE RIP-RAP LAYER SHALL BE 1.5 TIMES THE MAXIMUM STONE DIAMETER (100% PASSING), BUT NOT LESS THAN 6 INCHES.
  - DIMENSIONS MAY BE MODIFIED BY ENGINEER TO MEET FIELD CONDITIONS.
  - UNLESS OTHERWISE SPECIFIED, DUMPED RIP-RAP SHALL BE USED.



DIMENSIONS		REINFORCEMENT	
DI.	REINFORCEMENT	DI.	REINFORCEMENT
1'-0"	4"	2'-0"	3"
1'-3"	6"	2'-3"	3"
1'-6"	8"	3'-0"	3"
2'-0"	8"	3'-6"	3"
2'-3"	8"	4'-0"	3"
2'-6"	8"	4'-6"	3"
3'-0"	8"	5'-0"	3"
3'-3"	8"	5'-6"	3"
3'-6"	8"	6'-0"	3"
4'-0"	8"	6'-6"	3"
4'-3"	8"	7'-0"	3"
4'-6"	8"	7'-6"	3"
5'-0"	8"	8'-0"	3"
5'-3"	8"	8'-6"	3"
5'-6"	8"	9'-0"	3"
6'-0"	8"	9'-6"	3"
6'-3"	8"	10'-0"	3"
6'-6"	8"	10'-6"	3"
7'-0"	8"	11'-0"	3"
7'-3"	8"	11'-6"	3"
7'-6"	8"	12'-0"	3"
8'-0"	8"	12'-6"	3"
8'-3"	8"	13'-0"	3"
8'-6"	8"	13'-6"	3"
9'-0"	8"	14'-0"	3"
9'-3"	8"	14'-6"	3"
9'-6"	8"	15'-0"	3"
10'-0"	8"	15'-6"	3"
10'-3"	8"	16'-0"	3"
10'-6"	8"	16'-6"	3"
11'-0"	8"	17'-0"	3"
11'-3"	8"	17'-6"	3"
11'-6"	8"	18'-0"	3"
12'-0"	8"	18'-6"	3"
12'-3"	8"	19'-0"	3"
12'-6"	8"	19'-6"	3"
13'-0"	8"	20'-0"	3"
13'-3"	8"	20'-6"	3"
13'-6"	8"	21'-0"	3"
14'-0"	8"	21'-6"	3"
14'-3"	8"	22'-0"	3"
14'-6"	8"	22'-6"	3"
15'-0"	8"	23'-0"	3"
15'-3"	8"	23'-6"	3"
15'-6"	8"	24'-0"	3"
16'-0"	8"	24'-6"	3"
16'-3"	8"	25'-0"	3"
16'-6"	8"	25'-6"	3"
17'-0"	8"	26'-0"	3"
17'-3"	8"	26'-6"	3"
17'-6"	8"	27'-0"	3"
18'-0"	8"	27'-6"	3"
18'-3"	8"	28'-0"	3"
18'-6"	8"	28'-6"	3"
19'-0"	8"	29'-0"	3"
19'-3"	8"	29'-6"	3"
19'-6"	8"	30'-0"	3"
20'-0"	8"	30'-6"	3"
20'-3"	8"	31'-0"	3"
20'-6"	8"	31'-6"	3"
21'-0"	8"	32'-0"	3"
21'-3"	8"	32'-6"	3"
21'-6"	8"	33'-0"	3"
22'-0"	8"	33'-6"	3"
22'-3"	8"	34'-0"	3"
22'-6"	8"	34'-6"	3"
23'-0"	8"	35'-0"	3"
23'-3"	8"	35'-6"	3"
23'-6"	8"	36'-0"	3"
24'-0"	8"	36'-6"	3"
24'-3"	8"	37'-0"	3"
24'-6"	8"	37'-6"	3"
25'-0"	8"	38'-0"	3"
25'-3"	8"	38'-6"	3"
25'-6"	8"	39'-0"	3"
26'-0"	8"	39'-6"	3"
26'-3"	8"	40'-0"	3"
26'-6"	8"	40'-6"	3"
27'-0"	8"	41'-0"	3"
27'-3"	8"	41'-6"	3"
27'-6"	8"	42'-0"	3"
28'-0"	8"	42'-6"	3"
28'-3"	8"	43'-0"	3"
28'-6"	8"	43'-6"	3"
29'-0"	8"	44'-0"	3"
29'-3"	8"	44'-6"	3"
29'-6"	8"	45'-0"	3"
30'-0"	8"	45'-6"	3"
30'-3"	8"	46'-0"	3"
30'-6"	8"	46'-6"	3"
31'-0"	8"	47'-0"	3"
31'-3"	8"	47'-6"	3"
31'-6"	8"	48'-0"	3"
32'-0"	8"	48'-6"	3"
32'-3"	8"	49'-0"	3"
32'-6"	8"	49'-6"	3"
33'-0"	8"	50'-0"	3"
33'-3"	8"	50'-6"	3"
33'-6"	8"	51'-0"	3"
34'-0"	8"	51'-6"	3"
34'-3"	8"	52'-0"	3"
34'-6"	8"	52'-6"	3"
35'-0"	8"	53'-0"	3"
35'-3"	8"	53'-6"	3"
35'-6"	8"	54'-0"	3"
36'-0"	8"	54'-6"	3"
36'-3"	8"	55'-0"	3"
36'-6"	8"	55'-6"	3"
37'-0"	8"	56'-0"	3"
37'-3"	8"	56'-6"	3"
37'-6"	8"	57'-0"	3"
38'-0"	8"	57'-6"	3"
38'-3"	8"	58'-0"	3"
38'-6"	8"	58'-6"	3"
39'-0"	8"	59'-0"	3"
39'-3"	8"	59'-6"	3"
39'-6"	8"	60'-0"	3"
40'-0"	8"	60'-6"	3"
40'-3"	8"	61'-0"	3"
40'-6"	8"	61'-6"	3"
41'-0"	8"	62'-0"	3"
41'-3"	8"	62'-6"	3"
41'-6"	8"	63'-0"	3"
42'-0"	8"	63'-6"	3"
42'-3"	8"	64'-0"	3"
42'-6"	8"	64'-6"	3"
43'-0"	8"	65'-0"	3"
43'-3"	8"	65'-6"	3"
43'-6"	8"	66'-0"	3"
44'-0"	8"	66'-6"	3"
44'-3"	8"	67'-0"	3"
44'-6"	8"	67'-6"	3"
45'-0"	8"	68'-0"	3"
45'-3"	8"	68'-6"	3"
45'-6"	8"	69'-0"	3"
46'-0"	8"	69'-6"	3"
46'-3"	8"	70'-0"	3"
46'-6"	8"	70'-6"	3"
47'-0"	8"	71'-0"	3"
47'-3"	8"	71'-6"	3"
47'-6"	8"	72'-0"	3"
48'-0"	8"	72'-6"	3"
48'-3"	8"	73'-0"	3"
48'-6"	8"	73'-6"	3"
49'-0"	8"	74'-0"	3"
49'-3"	8"	74'-6"	3"
49'-6"	8"	75'-0"	3"
50'-0"	8"	75'-6"	3"
50'-3"	8"	76'-0"	3"
50'-6"	8"	76'-6"	3"
51'-0"	8"	77'-0"	3"
51'-3"	8"	77'-6"	3"
51'-6"	8"	78'-0"	3"
52'-0"	8"	78'-6"	3"
52'-3"	8"	79'-0"	3"
52'-6"	8"	79'-6"	3"
53'-0"	8"	80'-0"	3"
53'-3"	8"	80'-6"	3"
53'-6"	8"	81'-0"	3"
54'-0"	8"	81'-6"	3"
54'-3"	8"	82'-0"	3"
54'-6"	8"	82'-6"	3"
55'-0"	8"	83'-0"	3"
55'-3"	8"	83'-6"	3"
55'-6"	8"	84'-0"	3"
56'-0"	8"	84'-6"	3"
56'-3"	8"	85'-0"	3"
56'-6"	8"	85'-6"	3"
57'-0"	8"	86'-0"	3"
57'-3"	8"	86'-6"	3"
57'-6"	8"	87'-0"	3"
58'-0"	8"	87'-6"	3"
58'-3"	8"	88'-0"	3"
58'-6"	8"	88'-6"	3"
59'-0"	8"	89'-0"	3"
59'-3"	8"	89'-6"	3"
59'-6"	8"	90'-0"	3"
60'-0"	8"	90'-6"	3"
60'-3"	8"	91'-0"	3"
60'-6"	8"	91'-6"	3"
61'-0"	8"	92'-0"	3"
61'-3"	8"	92'-6"	3"
61'-6"	8"	93'-0"	3"
62'-0"	8"	93'-6"	3"
62'-3"	8"	94'-0"	3"
62'-6"	8"	94'-6"	3"
63'-0"	8"	95'-0"	3"
63'-3"	8"	95'-6"	3"
63'-6"	8"	96'-0"	3"
64'-0"	8"	96'-6"	3"
64'-3"	8"	97'-0"	3"
64'-6"	8"	97'-6"	3"
65'-0"	8"	98'-0"	3"
65'-3"	8"	98'-6"	3"
65'-6"	8"	99'-0"	3"
66'-0"	8"	99'-6"	3"
66'-3"	8"	100'-0"	3"
66'-6"	8"	100'-6"	3"
67'-0"	8"	101'-0"	3"
67'-3"	8"	101'-6"	3"
67'-6"	8"	102'-0"	3"
68'-0"	8"	102'-6"	3"
68'-3"	8"	103'-0"	3"
68'-6"	8"	103'-6"	3"
69'-0"	8"	104'-0"	3"
69'-3"	8"	104'-6"	3"
69'-6"	8"	105'-0"	3"
70'-0"	8"	105'-6"	3"
70'-3"	8"	106'-0"	3"
70'-6"	8"	106'-6"	3"
71'-0"	8"	107'-0"	3"
71'-3"	8"	107'-6"	3"
71'-6"	8"	108'-0"	3"
72'-0"	8"	108'-6"	3"
72'-3"	8"	109'-0"	3"
72'-6"	8"	109'-6"	3"
73'-0"	8"	110'-0"	3"
73'-3"	8"	110'-6"	3"
73'-6"	8"	111'-0"	3"
74'-0"	8"	111'-6"	3"
74'-3"	8"	112'-0"	3"
74'-6"	8"	112'-6"	3"
75'-0"	8"	113'-0"	3"
75'-3"	8"	113'-6"	3"
75'-6"	8"	114'-0"	3"
76'-0"	8"	114'-6"	3"
76'-3"	8"	115'-0"	3"
76'-6"	8"	115'-6"	3"
77'-0"	8"	116'-0"	3"
77'-3"	8"	116'-6"	3"
77'-6"	8"	117'-0"	3"
78'-0"	8"	117'-6"	3"
78'-3"	8"	118'-0"	3"
78'-6"	8"	118'-6"	3"
79'-0"	8"	119'-0"	3"
79'-3"	8"	119'-6"	3"
79'-6"	8"	120'-0"	3"
80'-0"	8"	120'-6"	3"
80'-3"	8"	121'-0"	3"
80'-6"	8"	121'-6"	3"
81'-0"	8"	122'-0"	3"
81'-3"	8"	122'-6"	3"
81'-6"	8"	123'-0"	3"
82'-0"	8"	123'-6"	3"
82'-3"	8"	124'-0"	3"
82'-6"	8"	124'-6"	3"
83'-0"	8"	125'-0"	3"
83'-3"	8"	125'-6"	3"
83'-6"	8"	126'-0"	3"
84'-0"	8"	126'-6"	3"
84'-3"	8"	127'-0"	3"
84'-6"	8"	127'-6"	3"
85'-0"	8"	128'-0"	3"
85'-3"	8"	128'-6"	3"
85'-6"	8"	129'-0"	3"
86'-0"	8"	129'-6"	3"
86'-3"	8"	130'-0"	3"
86'-6"	8"	130'-6"	3"
87'-0"	8"	131'-0"	3"
87'-3"	8"	131'-6"	3"
87'-6"	8"	132'-0"	3"
88'-0"	8"	132'-6"	3"
88'-3"	8"	133'-0"	3"
88'-6"	8"	133'-6"	3"
89'-0"	8"	134'-0"	3"
89'-3"	8"	134'-6"	3"
89'-6"	8"	135'-0"	3"
90'-0"	8"	135'-6"	3"
90'-3"	8"	136'-0"	3"
90'-6"	8"	136'-6"	3"
91'-0"	8"	137'-0"	3"
91'-3"	8"	137'-6"	3"
91'-6"	8"	138'-0"	3"
92'-0"	8"	138'-6"	3"
92'-3"	8"	139'-0"	3"
92'-6"	8"	139'-6"	3"
93'-0"	8"	140	



APR 10 2008  
 DEPARTMENT OF ENVIRONMENTAL MANAGEMENT  
 OFFICE OF WATER RESOURCES  
 FRESH WATER WETLANDS PROGRAM  
 APPROVED WITH CONDITIONS  
 AS SPECIFIED IN THE LETTER OF APPROVAL  
 DATED JUN 9 2008 FILE # 07-0216  
 NO CHANGES ALLOWED WITHOUT PRIOR APPROVAL  
 APPROVED BY: [Signature]

REVISION	NO.	DATE

JOHN P. CAITO  
 No. 0598  
 401-915-8600  
 Inc. 401-915-8606  
 PROFESSIONAL ENGINEER

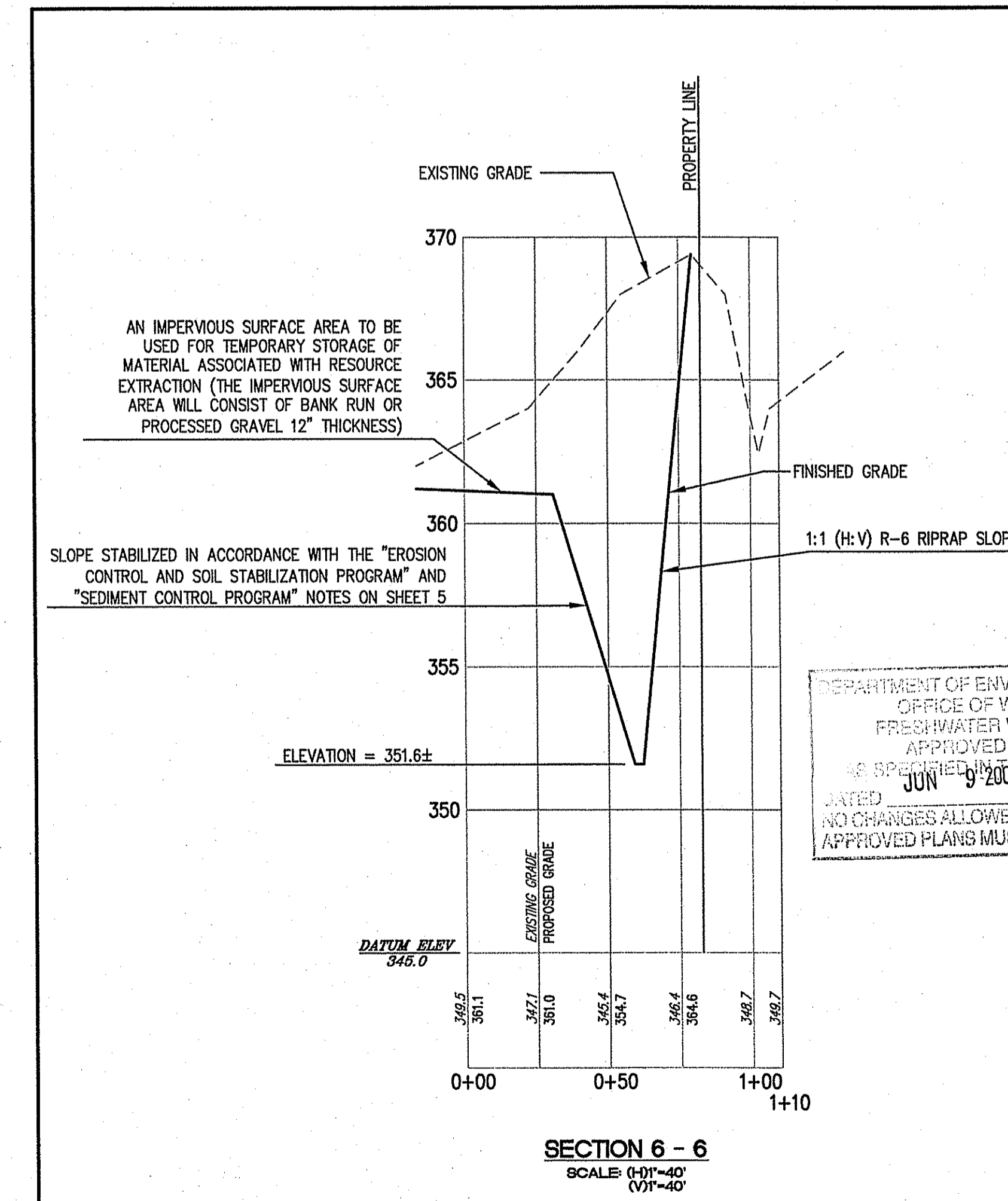
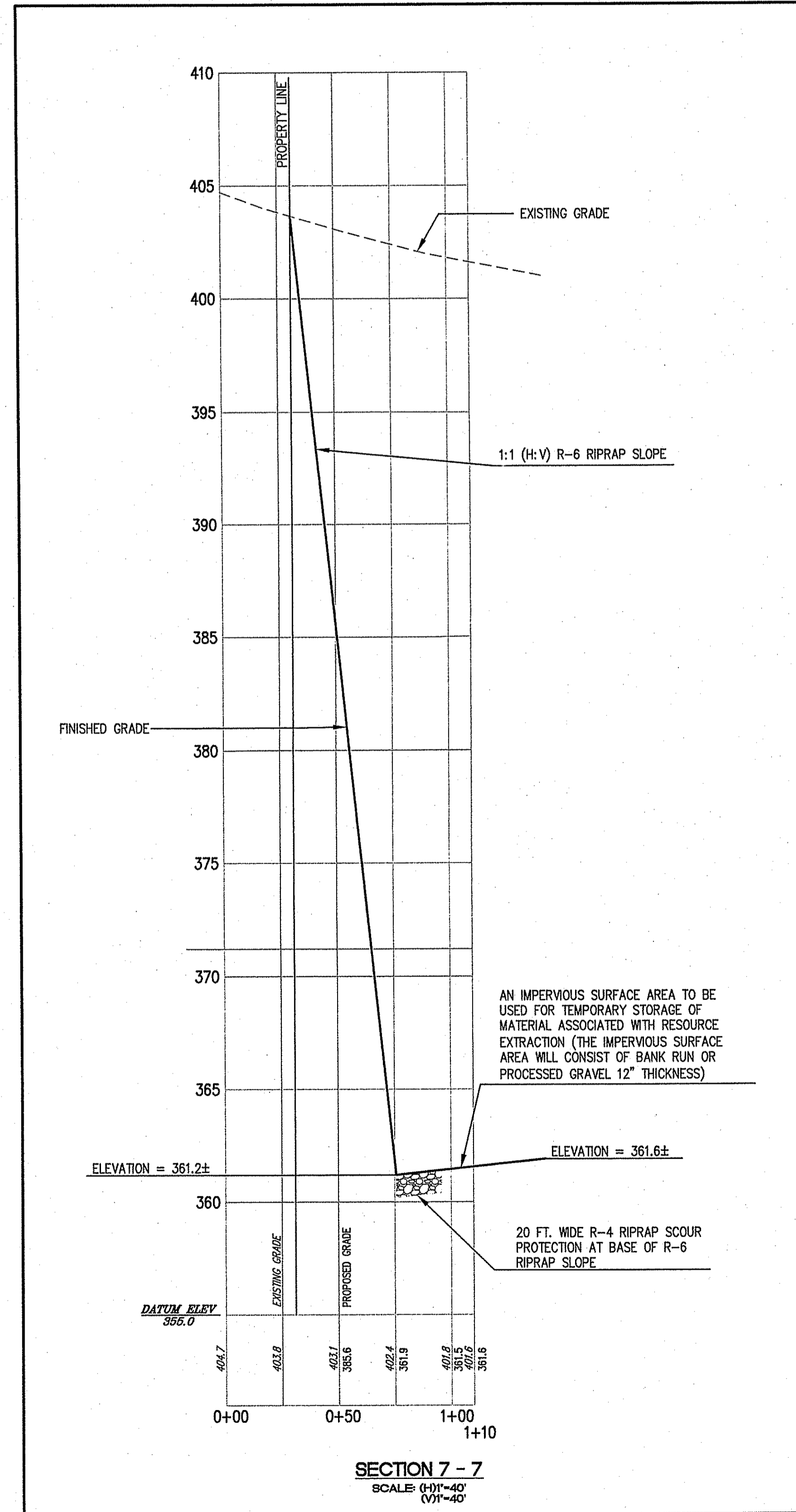
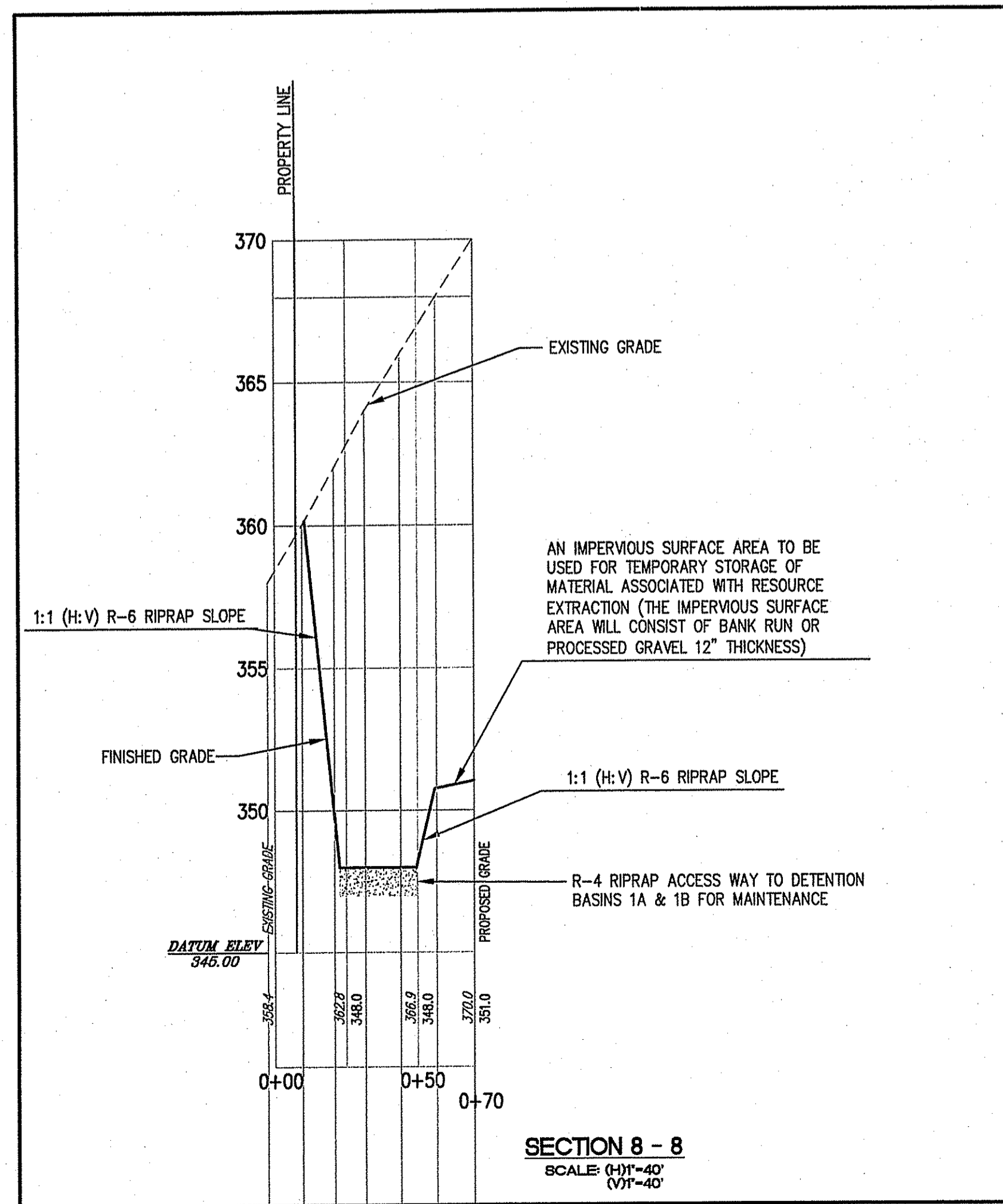
CIVIL ENGINEERS  
 141 JAMES P. MURPHY HIGHWAY  
 WEST WARWICK, RHODE ISLAND  
 02893-2382  
 401-915-8600  
 Inc. 401-915-8606

**CAITO CORPORATION**  
 LAND PLANNERS

PROJECT NO.: 131495  
 DATE: MAY 2007  
 SCALE: AS NOTED  
 DESIGNED BY: S.G.T.  
 DRAWN BY: S.G.T.  
 CHECKED BY: J.P.C.

SECTIONS-1  
**SOIL EROSION PLAN**  
 ASSESSOR'S PLAT 45, LOT 18  
 AND ASSESSOR'S PLAT 46, LOT 75  
 GEORGE WASHINGTON HIGHWAY RHODE ISLAND  
 PREPARED FOR  
**JAKE DEVELOPMENT CO., LLC**  
 SMITH-FIELD

DRAWING NUMBER  
**5**  
 SHEET 5 OF 6



DEPARTMENT OF ENVIRONMENTAL MANAGEMENT  
OFFICE OF WATER RESOURCES  
FRESHWATER WETLANDS PROGRAM  
APPROVED WITH CONDITIONS  
AS SPECIFIED IN THE LETTER OF APPROVAL  
DATED JUN 9 2008 FILE # 07-0026  
NO CHANGES ALLOWED WITHOUT PRIOR APPROVAL  
APPROVED PLANS MUST BE AT CONSTRUCTION SITE

APR 10 2008

NO.	DATE	REVISION

JOHN P. CAITO  
No. 4398  
PROFESSIONAL ENGINEER

CIVIL ENGINEERS  
JOHN P. CAITO CORPORATION  
LAND PLANNERS

PROJECT NO: 13.1495  
DATE: OCTOBER 2007  
SCALE: AS NOTED  
DESIGNED BY: S.G.T.  
DRAWN BY: S.G.T.  
CHECKED BY: J.P.C.

SECTIONS-2  
**SOIL EROSION PLAN**  
ASSESSOR'S FLAT 45, LOT 1B  
AND ASSESSOR'S FLAT 46, LOT 75  
GEORGE WASHINGTON HIGHWAY RHODE ISLAND  
SMITHFIELD  
PREPARED FOR  
JAKE DEVELOPMENT CO., LLC

DRAWING NUMBER

**6**  
SHEET 6 OF 6