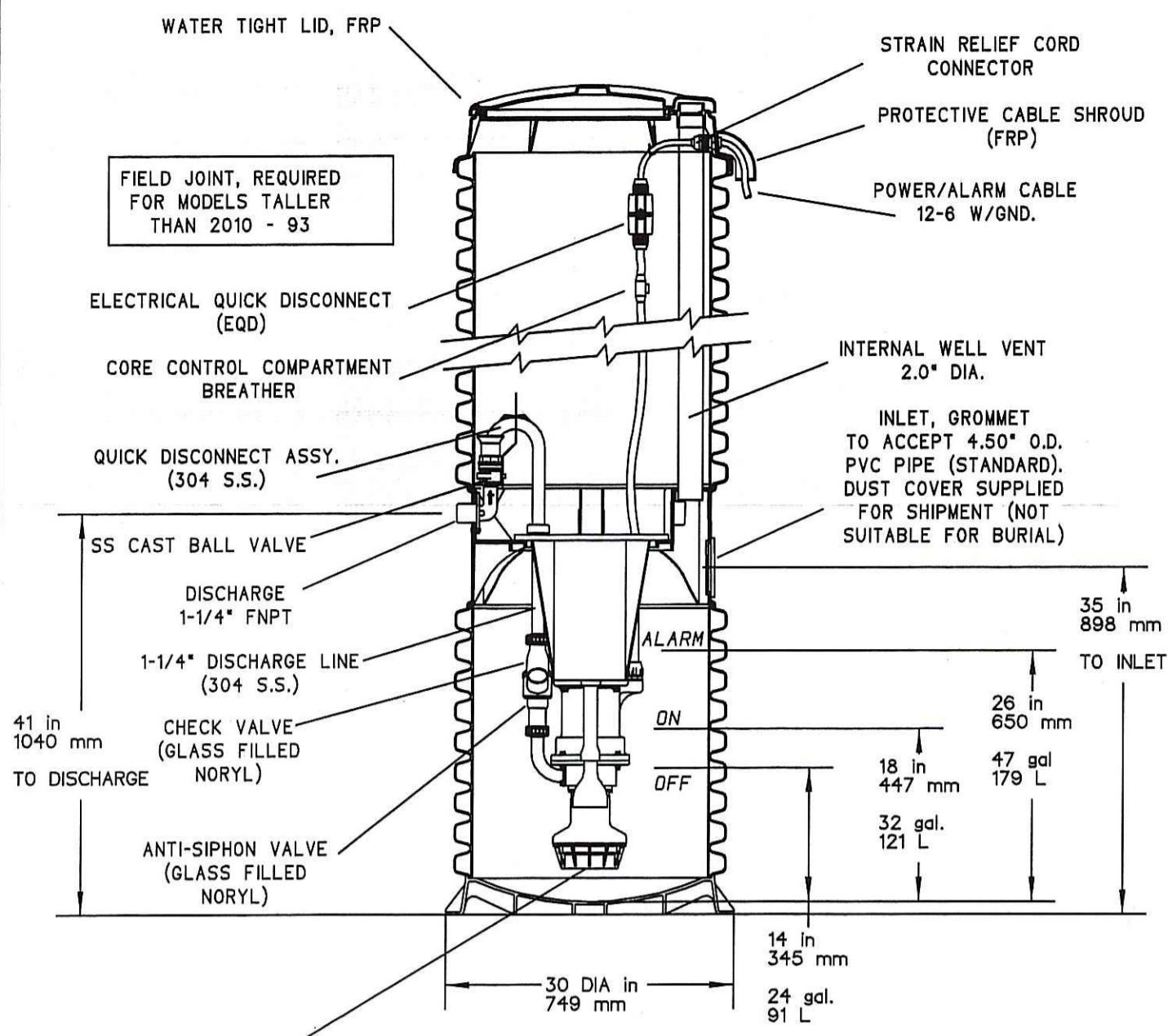


2010

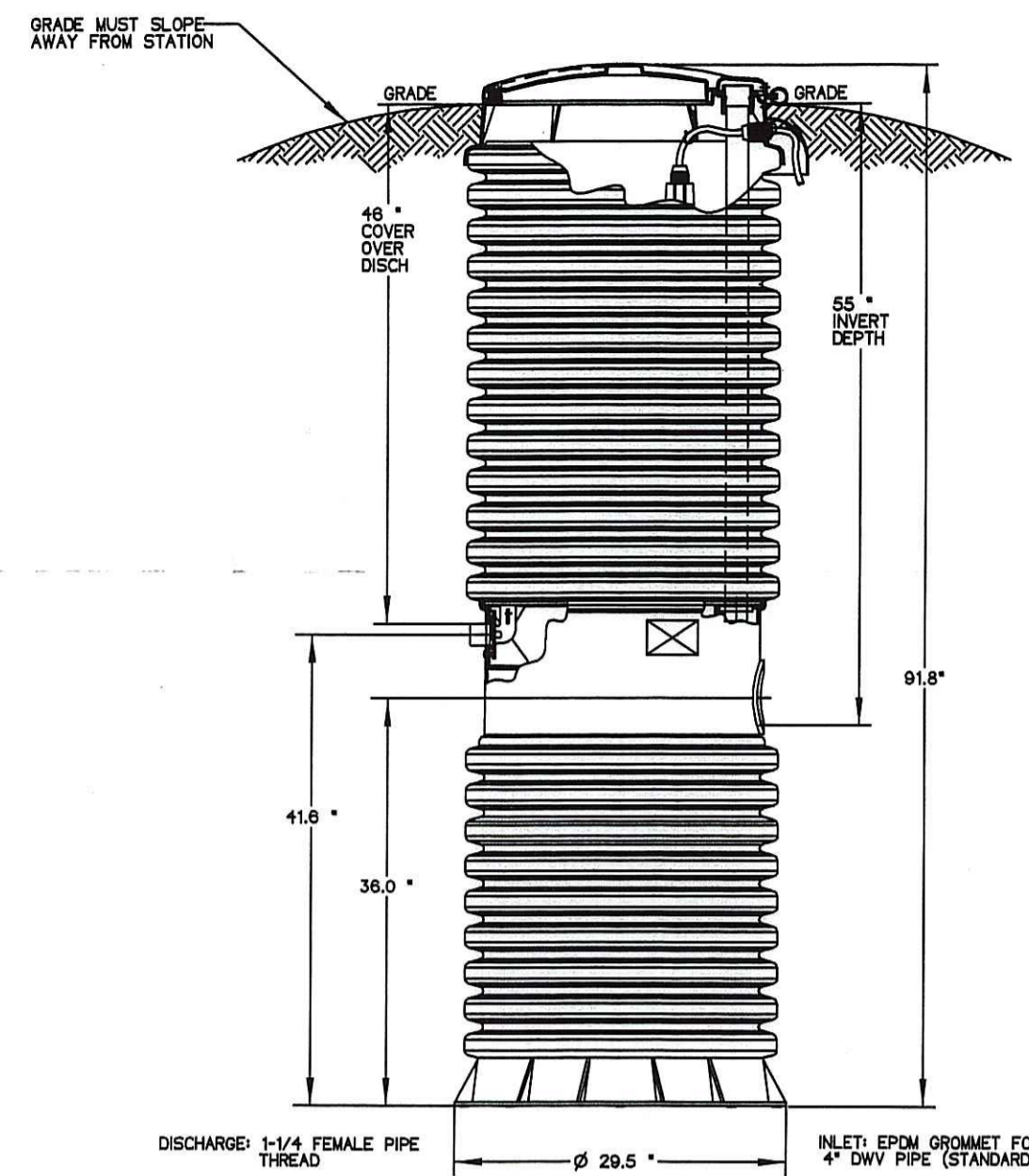


SEMI-POSITIVE DISPLACEMENT TYPE PUMP DIRECTLY DRIVEN BY A 1 HP MOTOR CAPABLE OF DELIVERING 9 gpm AT 138' T.D.H. (34 lpm AT 42m T.D.H.)

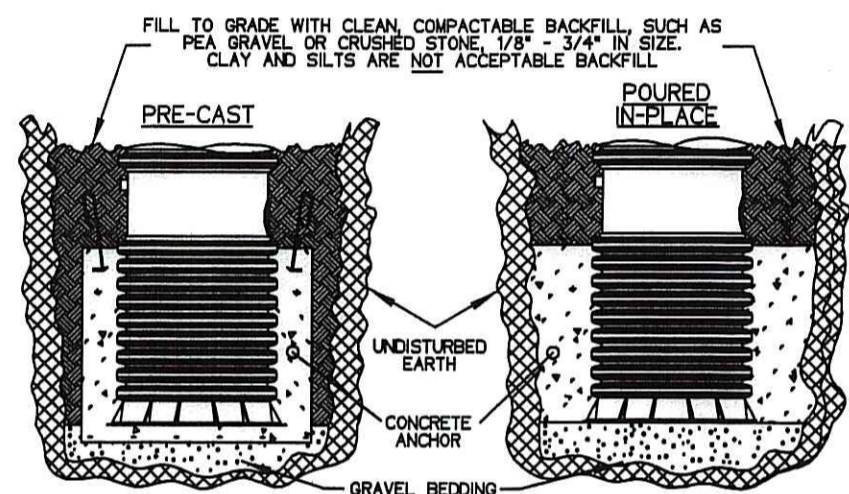
NOTE: A CONCRETE ANCHOR IS REQUIRED TO PREVENT TANK FROM FLOATING. SEE INSTALLATION INSTRUCTIONS OR SPECIFIC CUT SHEET FOR SIZE AND WEIGHT OF ANCHOR

UL	NSF	SA		
SGS	CAH	1/25/99	F	1/16
DR BY	CHK'D	DATE	ISSUE	SCALE
eone SEWER SYSTEMS				
MODEL 2010, DETAIL SHEET				
PA 0908 P01				

2010-93



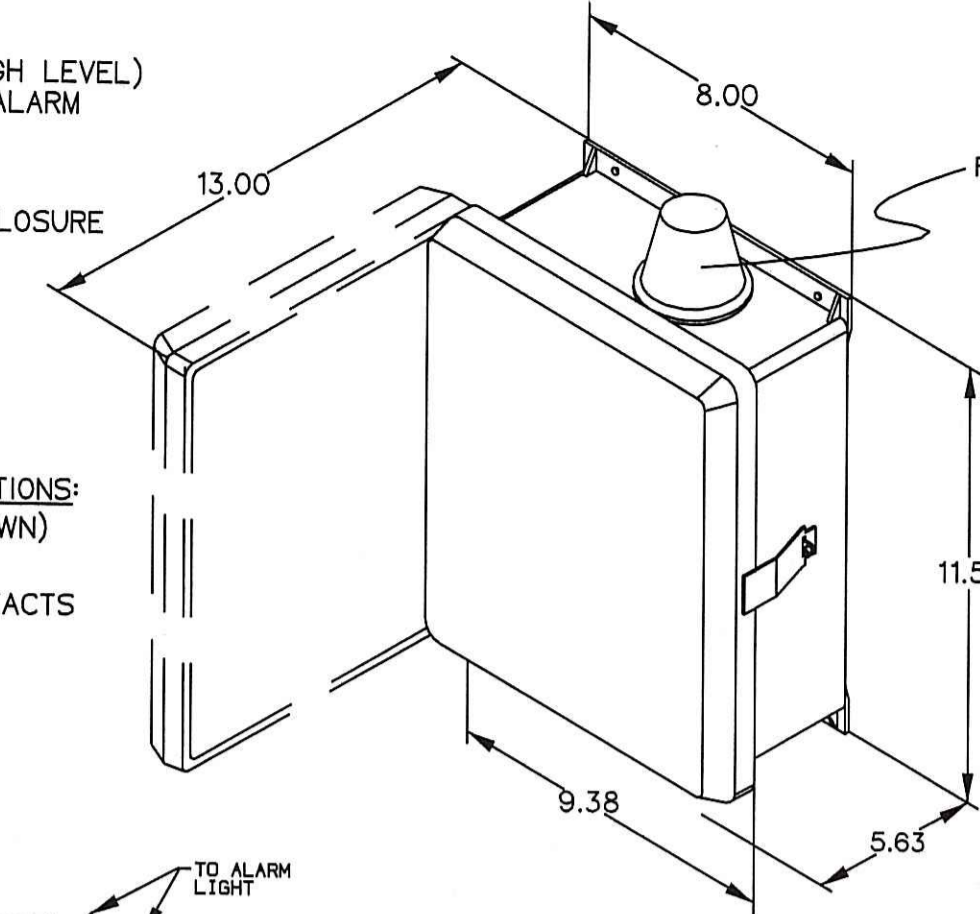
**SEE INSTALLATION INSTRUCTIONS FOR FURTHER DETAILS
NOTE: A CONCRETE ANCHOR OF 2800 lbs (17.3 cu ft) IS REQUIRED ON ALL MODEL 2010 93 STATIONS.



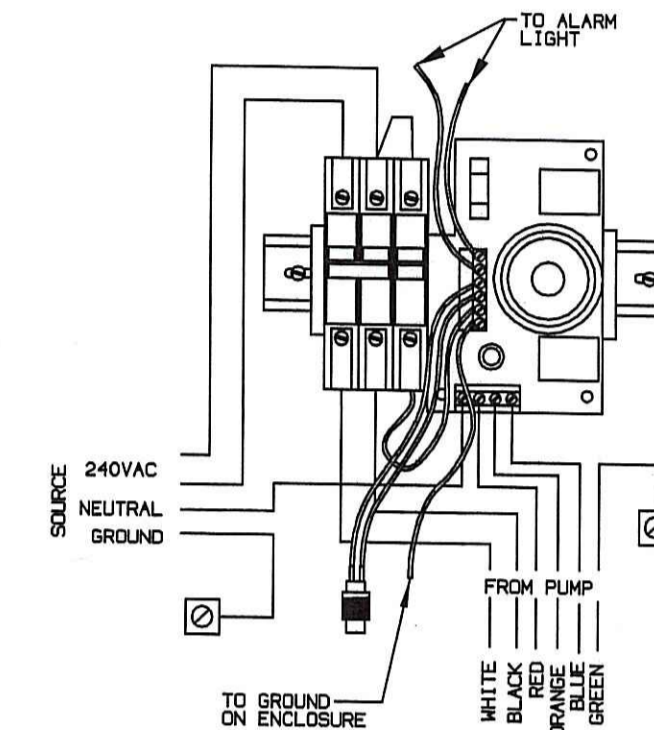
UL	NSF	SA		
SGS	CAH	01/21/99	A	1/16
DR BY	CHK'D	DATE	ISSUE	SCALE
eone SEWER SYSTEMS				
MODEL 2010-93				
PA 0856 P04				

SIMPLEX MOD 250

REDUNDANT RUN (HIGH LEVEL) VISUAL & AUDIBLE ALARM
MANUAL SILENCE
MANUAL RUN
240VAC
4X FIBERGLASS ENCLOSURE



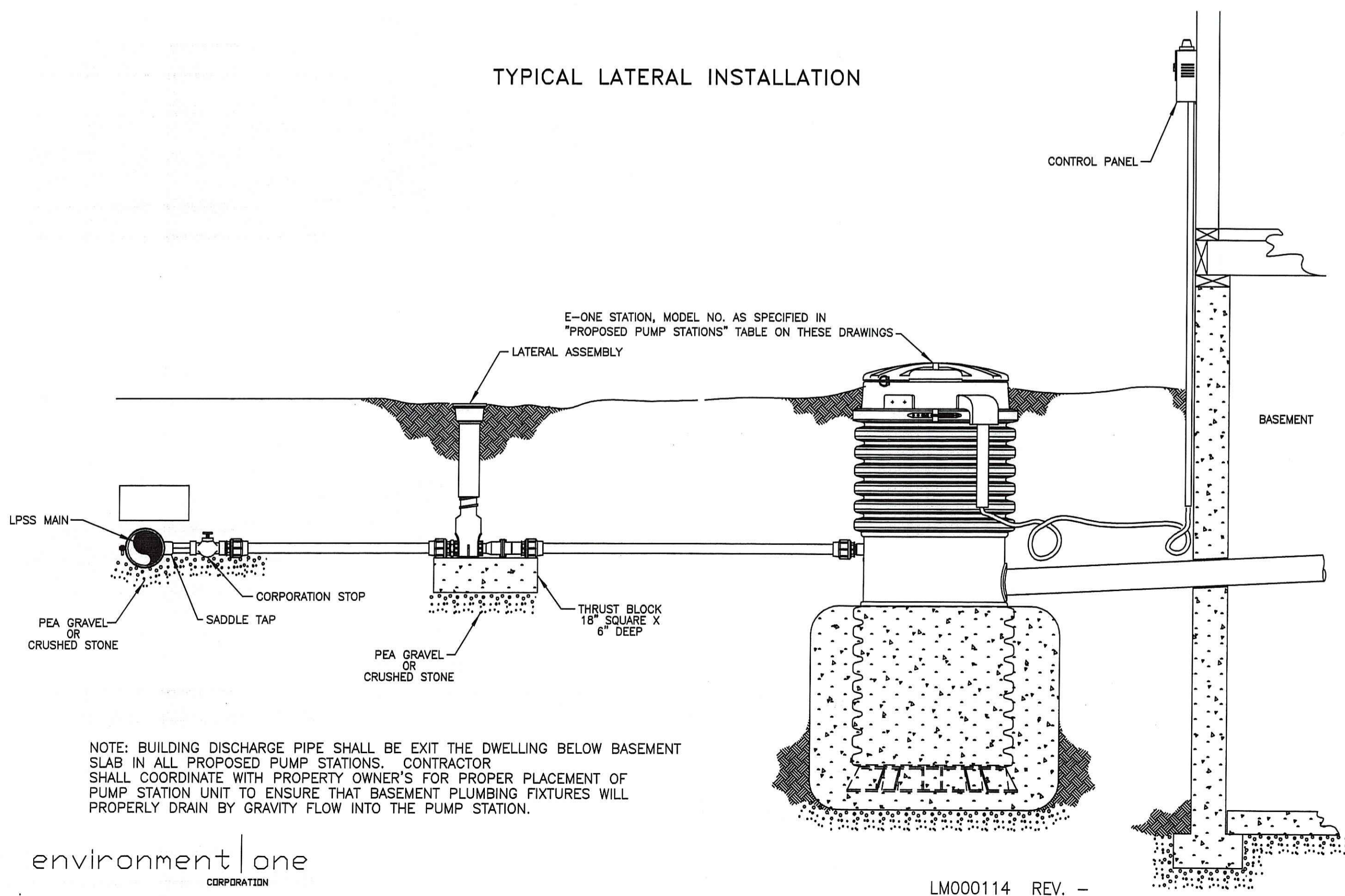
AVAILABLE CONFIGURATIONS:
G01 - STANDARD (SHOWN)
G02 - WITHOUT HORN
G03 - WITH DRY CONTACTS
G04 - WITH REMOTE



CONTROL CABLE:
TYPE TC: DIRECT BURIAL, 12AWG, SIX CONDUCTOR.

UL	NSF			
SGS	CAH	9/5/00	A	5/32
DR BY	CHK'D	DATE	ISSUE	SCALE
eone SEWER SYSTEMS				
PANEL, 4X SIMPLEX, 240V				
LM000152				

TYPICAL LATERAL INSTALLATION

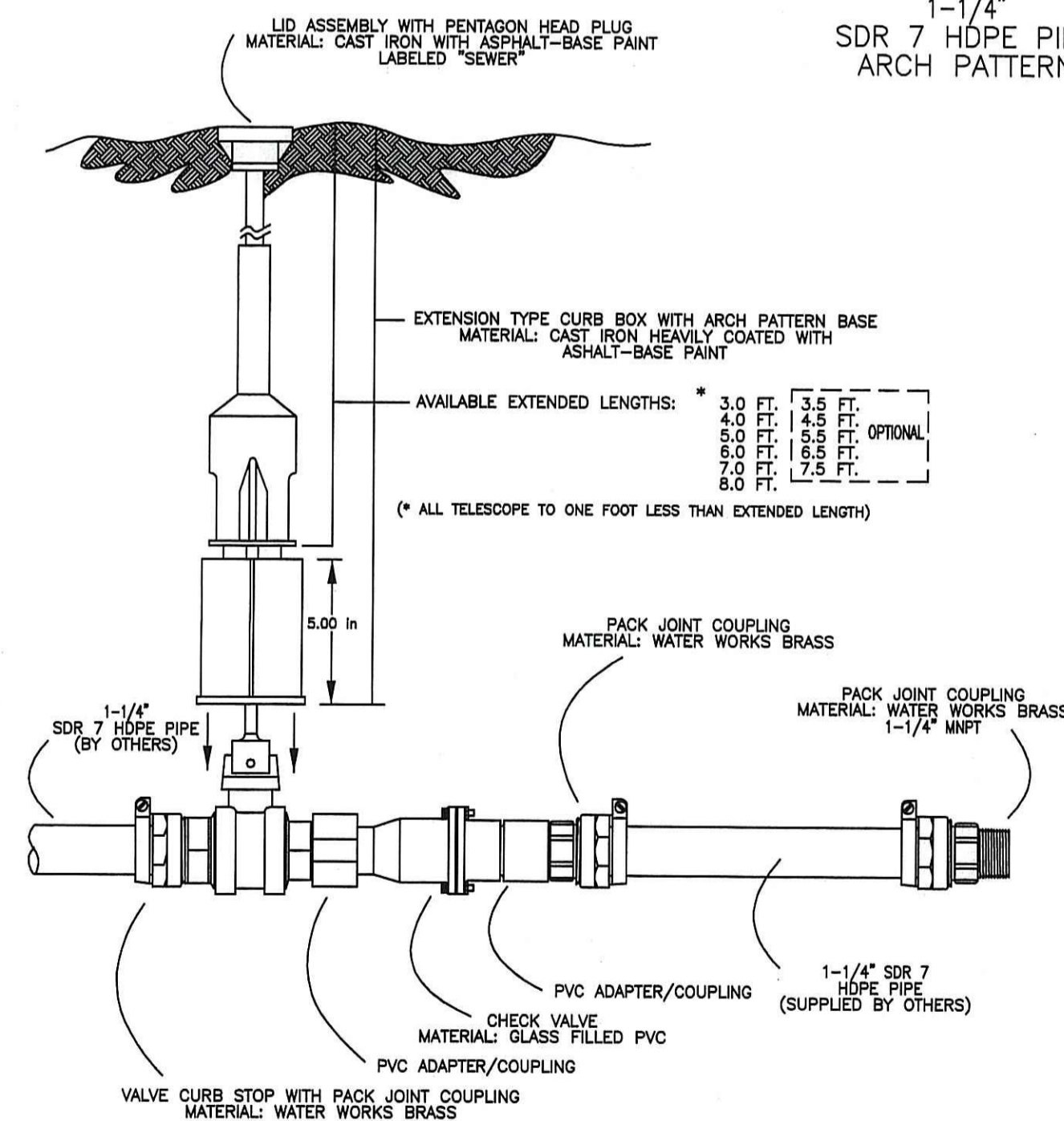


NOTE: BUILDING DISCHARGE PIPE SHALL BE EXIT THE DWELLING BELOW BASEMENT SLAB IN ALL PROPOSED PUMP STATIONS. CONTRACTOR SHALL COORDINATE WITH PROPERTY OWNER'S FOR PROPER PLACEMENT OF PUMP STATION UNIT TO ENSURE THAT BASEMENT PLUMBING FIXTURES WILL PROPERLY DRAIN BY GRAVITY FLOW INTO THE PUMP STATION.

environment one CORPORATION

LM000114 REV. -

LATERAL ASSEMBLY 1-1/4" SDR 7 HDPE PIPE ARCH PATTERN



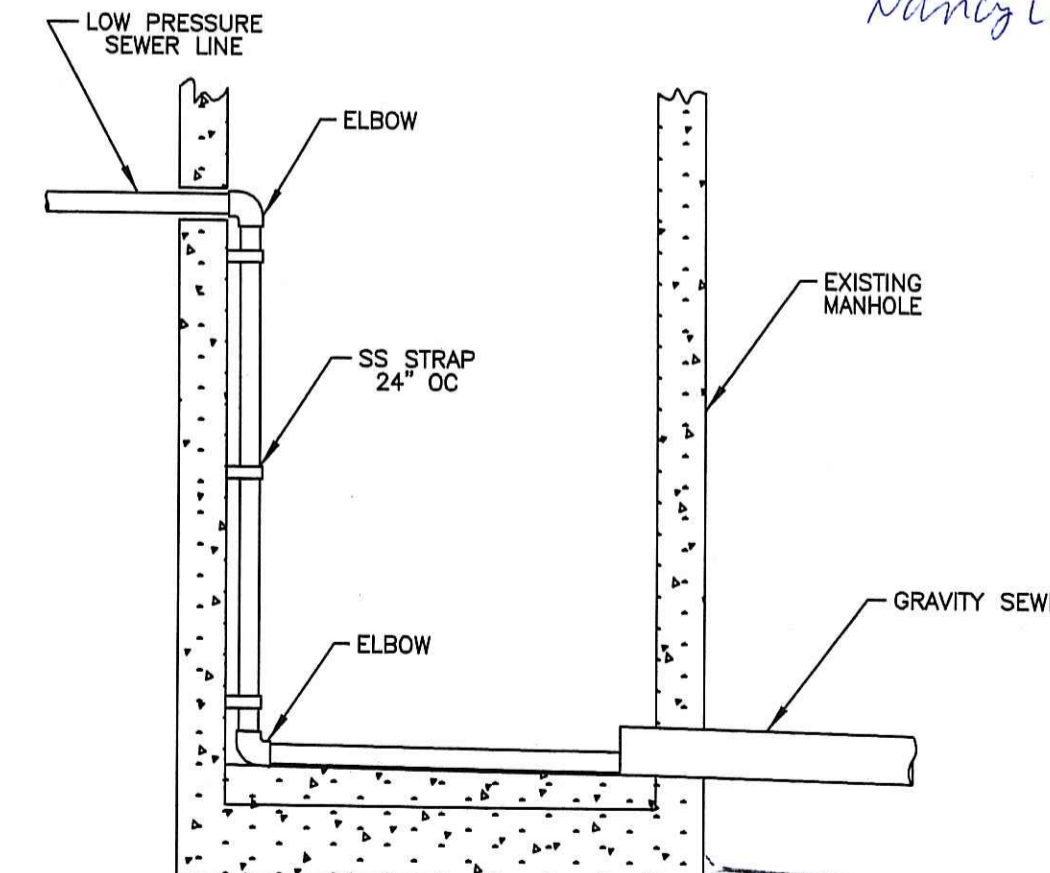
PRESSURE RATING: 150 psi
ALL PACK JOINT COUPLINGS SUPPLIED WITH INSERT STIFFENERS

ASSEMBLY TO BE USED WITH 1-1/4" SDR 7 PIPE ONLY

*FOR ORDERING INFORMATION SEE PA1372P01 LATERAL ORDER CODE

APS	WRS	01/06/97	-	3/16
DR BY	CHK'D	DATE	ISSUE	SCALE
environment one CORPORATION				
LATERAL ASSEMBLY 1-1/4" SDR 7 HDPE PIPE ARCH PATTERN				
PA 1329 P01				

TYPICAL DROP CONNECTION LPSS IN EXISTING MANHOLE



AUG 2 2007

07-0274

Nancy L. Freeman

JOHN LAWLESS, JR.
REGISTERED PROFESSIONAL ENGINEER
6-13-07

environment one CORPORATION

LM000115 REV. -

DRAWING TITLE:
PROPOSED PRIVATE SANITARY SEWER, PHASE 2: DETAILS

REVISIONS:

DATE:
6-6-07

SCALE:
AS NOTED

BY:
JL

DRAWING NO:
SS2

SHEET 2 OF 2

PROJECT ID:
200

ENGINEER:
JOHN LAWLESS, JR., P.E.
71 CORONADO STREET
JAMESTOWN, RI 02835
TEL. 401-423-9999

PROJECT:
LEWIS GAFFETT: PROPOSED PRIVATE SANITARY SEWER TO BE LOCATED AT EBBETT'S HOLLOW RD., BLOCK IS., RI