

Roadway Plans

Issued for: **Construction**

Date Issued: August 1, 2007

Latest Issue: August 1, 2007

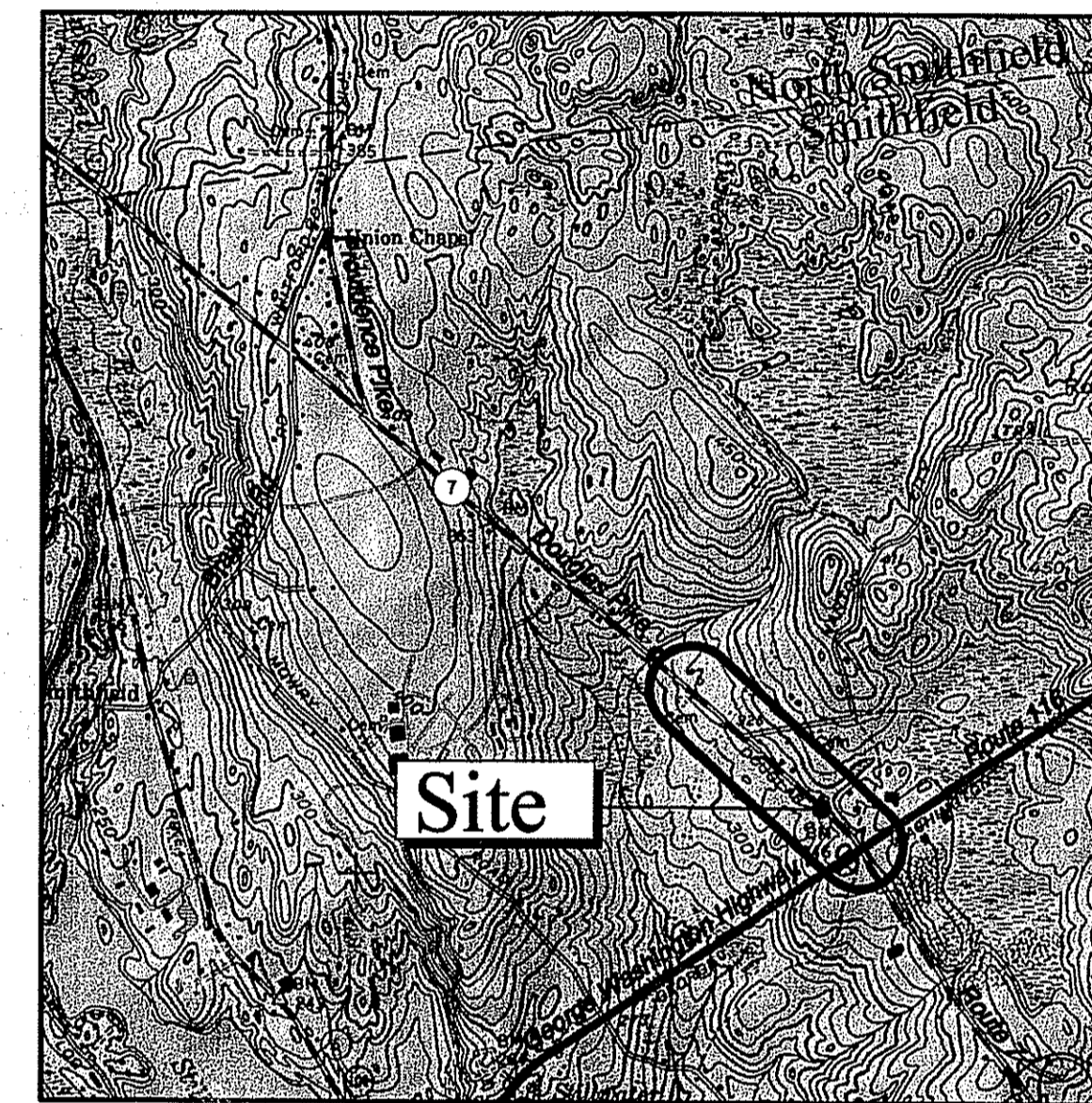
Index

No.	Drawing Title	Latest Issue
	Cover sheet	
H-1	Key Plan	8/1/07
H-2	Plan Symbols & General Legend	8/1/07
H-3	General Notes	8/1/07
H-4	Typical Section Essex Road	8/1/07
H-5	Typical Sections Douglas Pike	8/1/07
H-6	Typical Sections George Washington Highway	8/1/07
H-7 thru H-13	General Plan Nos. 1-7	8/1/07
H-14 thru H-20	Drainage & Utility Plan Nos. 1-7	8/1/07



Off-Site Roadway Improvements

Douglas Pike and George Washington Highway Smithfield, Rhode Island



Site Location Map



0 1000 2000 Feet

Property Information

Owner/Applicant:
Fidelity Real Estate Co. LLC
82 Devonshire Street: WGA
Boston, MA 02109

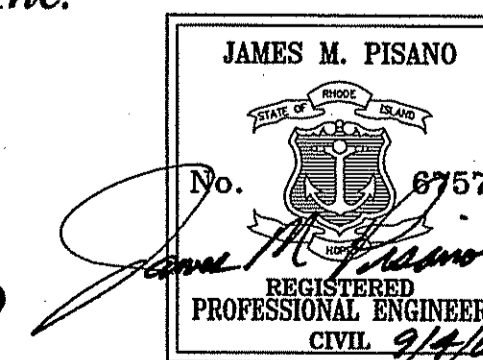
DEPARTMENT OF ENVIRONMENTAL MANAGEMENT
OFFICE OF WATER RESOURCES
FRESHWATER WETLANDS PROGRAM
APPROVED WITH CONDITIONS
AS SPECIFIED IN THE LETTER OF APPROVAL
DATED **SEP 14 2007** FILE # **07-0289**
NO CHANGES ALLOWED WITHOUT PRIOR APPROVAL
APPROVED PLANS MUST BE AT CONSTRUCTION SITE

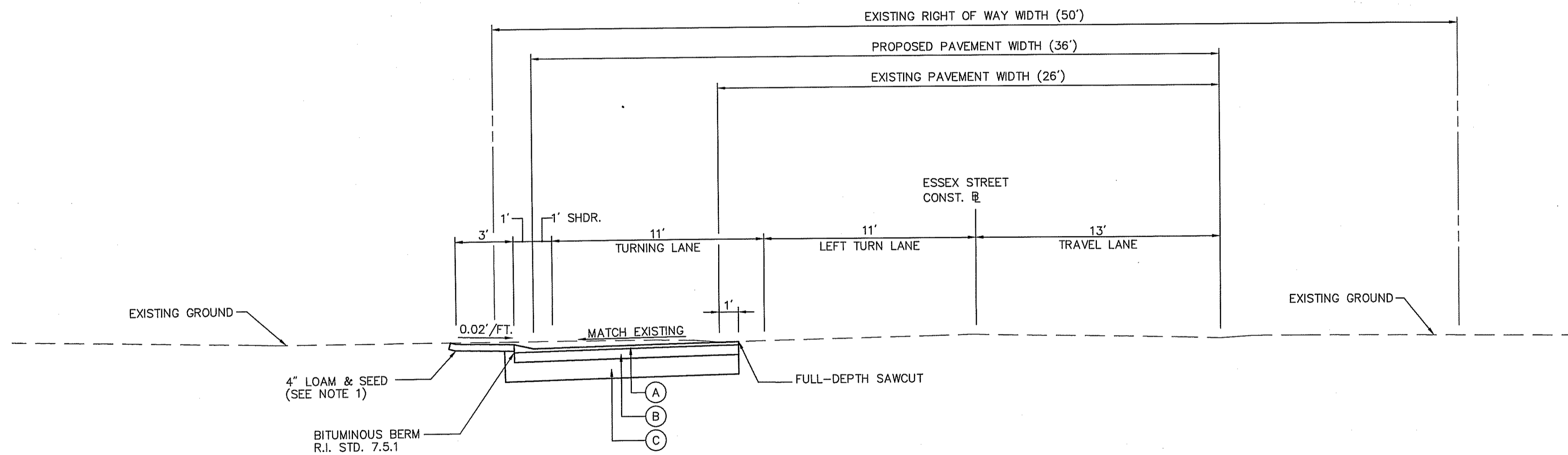
Chris A. [Signature]

SEP - 5 2007



Vanasse Hangen Brustlin, Inc.
Transportation
Land Development
Environmental Services
530 Broadway
Providence, Rhode Island 02909
401 272 8100 · 401 273 9694





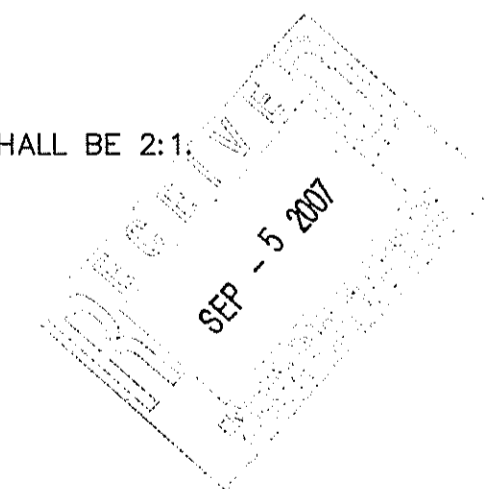
ESSEX STREET
STA. 9+70 TO 10+30
SCALE: 1"=4'

PAVEMENT STRUCTURE (PAVEMENT WIDENING)

- (A) 2" BITUMINOUS SURFACE COURSE, TYPE I-1
- (B) 6" BITUMINOUS BASE COURSE
- (C) 12" GRAVEL BORROW SUBBASE COURSE

NOTE:

1. THE MAXIMUM SLOPE TREATMENT SHALL BE 2:1.



DEPARTMENT OF ENVIRONMENTAL MANAGEMENT
OFFICE OF WATER RESOURCES
FRESHWATER WETLANDS PROGRAM
APPROVED WITH CONDITIONS
AS SPECIFIED IN THE LETTER OF APPROVAL
DATED SEP 14 2007 FILE # 07-0289
NO CHANGES ALLOWED WITHOUT PRIOR APPROVAL
APPROVED PLANS MUST BE AT CONSTRUCTION SITE

Charles H. H.

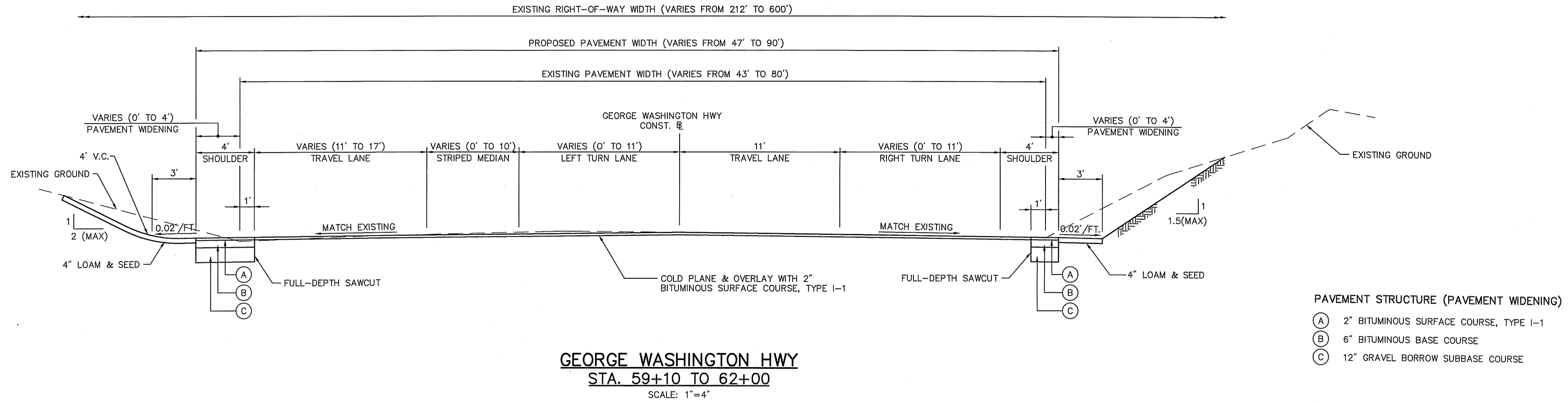
No.	Revision	Date	Apprd.

**Off-Site Roadway
Improvements**
Douglas Pike and George Washington Hwy.
Smithfield, Rhode Island

Issued For Construction

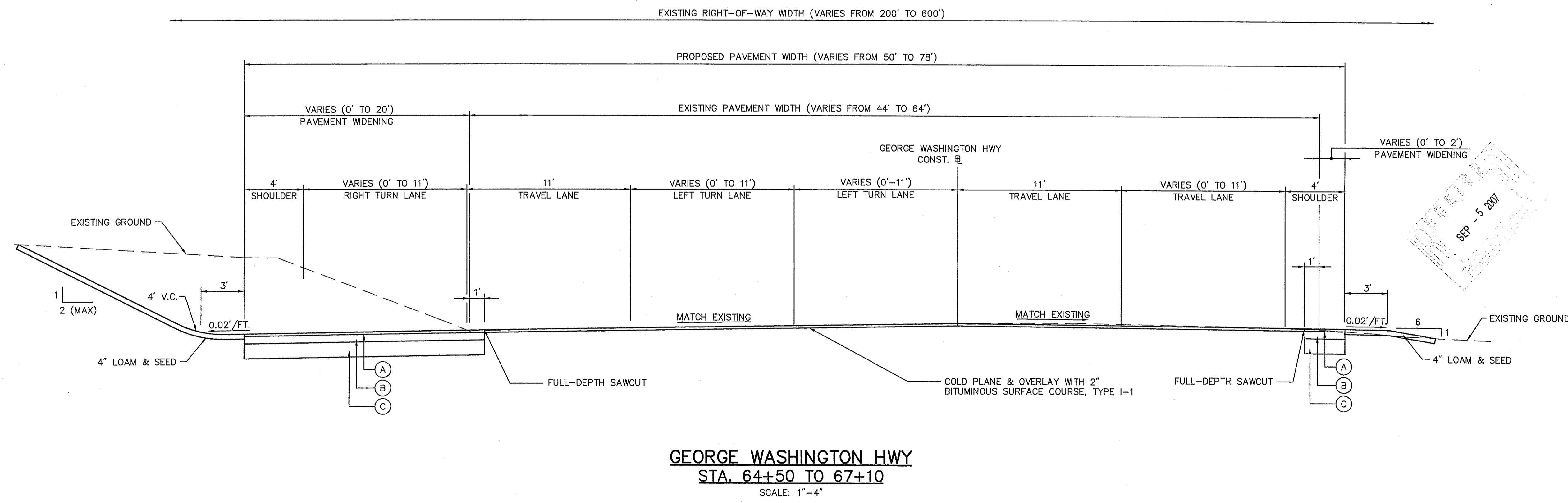
Typical Section
Essex Street

Drawing Number
H-4
Sheet 4 of 20
Project Number
71809.20



DEPARTMENT OF ENVIRONMENTAL MANAGEMENT
OFFICE OF WATER RESOURCES
FRESHWATER WETLANDS PROGRAM
APPROVED WITH CONDITIONS
AS SPECIFIED IN THE LETTER OF APPROVAL
DATED SEP 11 2007, FILE # 07-0389
NO CHANGES ALLOWED WITHOUT PRIOR APPROVAL
APPROVED PLANS MUST BE AT CONSTRUCTION SITE

Charles A. Haber



APPROVED
SEP - 5 2007

No.	Revision	Date	Appr.

Designed by _____ Drawn by _____ Checked by _____
CAD checked by _____ Approved by _____
Scale 1"=4' Date August 1, 2007
Project Title _____

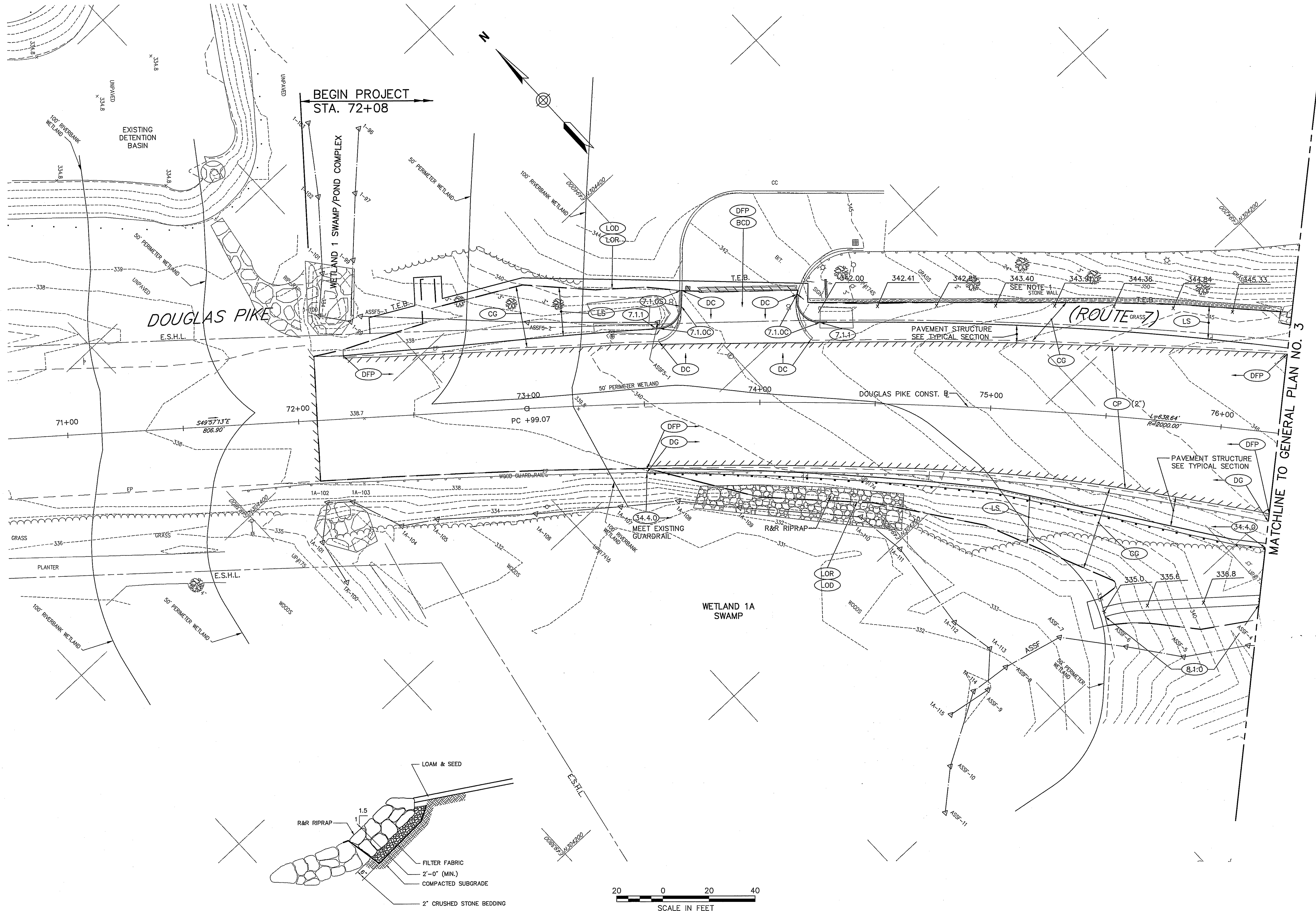
Off-Site Roadway Improvements
Douglas Pike and George Washington Hwy.
Smithfield, Rhode Island
Issued for _____

Issued For Construction

Drawing Title _____

Typical Sections
George Washington Hwy

Drawing Number _____
H-6
Sheet 6 of 20
Project Number 71809.20



NOTE:
1. FOR SLOPE RATES ALONG DITCH - SEE TYPICAL SECTION

DEPARTMENT OF ENVIRONMENTAL MANAGEMENT
OFFICE OF WATER RESOURCES
FRESHWATER WETLANDS PROGRAM
APPROVED WITH CONDITIONS
AS SPECIFIED IN THE LETTER OF APPROVAL
DATED SEP 14 2007, FILE # 07-0289
NO CHANGES ALLOWED WITHOUT PRIOR APPROVAL
APPROVED PLANS MUST BE AT CONSTRUCTION SITE

Charles H. Barber

No.	Revision	Date	Appr.

Designed by	Drawn by	Checked by
CAD checked by	Approved by	
Scale 1"=20'	Date August 1, 2007	
Project Title		

Off-Site Roadway Improvements
Douglas Pike and George Washington Hwy.
Smithfield, Rhode Island
Issued for

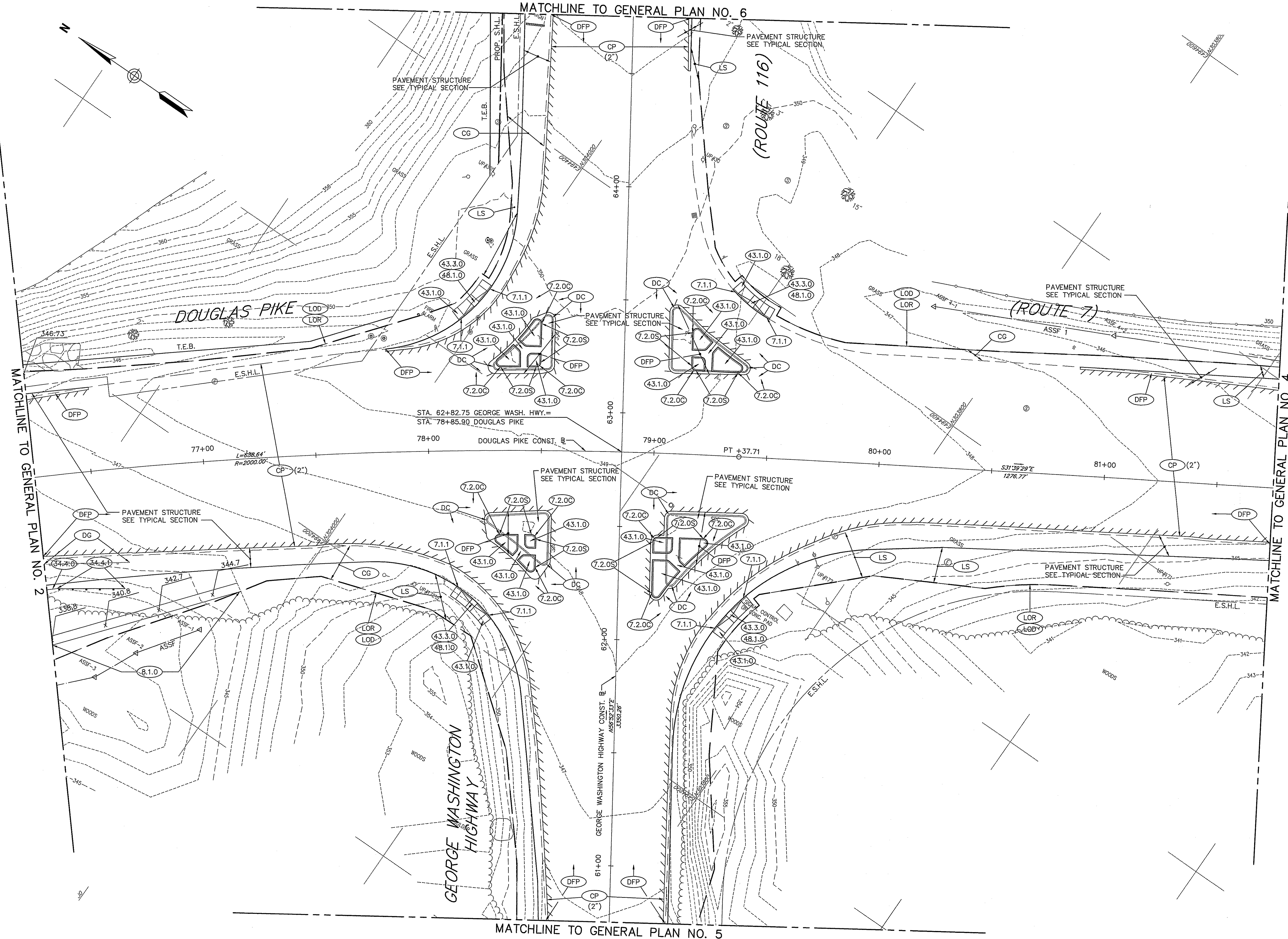
Issued For Construction

RECEIVED
SEP - 5 2007

General Plan No. 2

Drawing Number
H-8
Sheet of
8 of 20
Project Number
71809.20

Remove and Reset Rip Rap Detail
N.T.S. REV



DEPARTMENT OF ENVIRONMENTAL MANAGEMENT
OFFICE OF WATER RESOURCES
FRESHWATER WETLANDS PROGRAM
APPROVED WITH CONDITIONS
AS SPECIFIED IN THE LETTER OF APPROVAL
DATED SEP 14 2007, FILE # 07-0289
NO CHANGES ALLOWED WITHOUT PRIOR APPROVAL
APPROVED PLANS MUST BE AT CONSTRUCTION SITE

Charles H. Norbeck

No.	Revision	Date	Appd.

Designed by _____ Drawn by _____ Checked by _____
 CAD checked by _____ Approved by _____
 Scale 1"=20' Date August 1, 2007
 Project Title _____

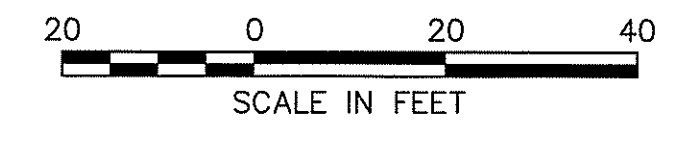
**Off-Site Roadway
Improvements**
 Douglas Pike and George Washington Hwy.
 Smithfield, Rhode Island

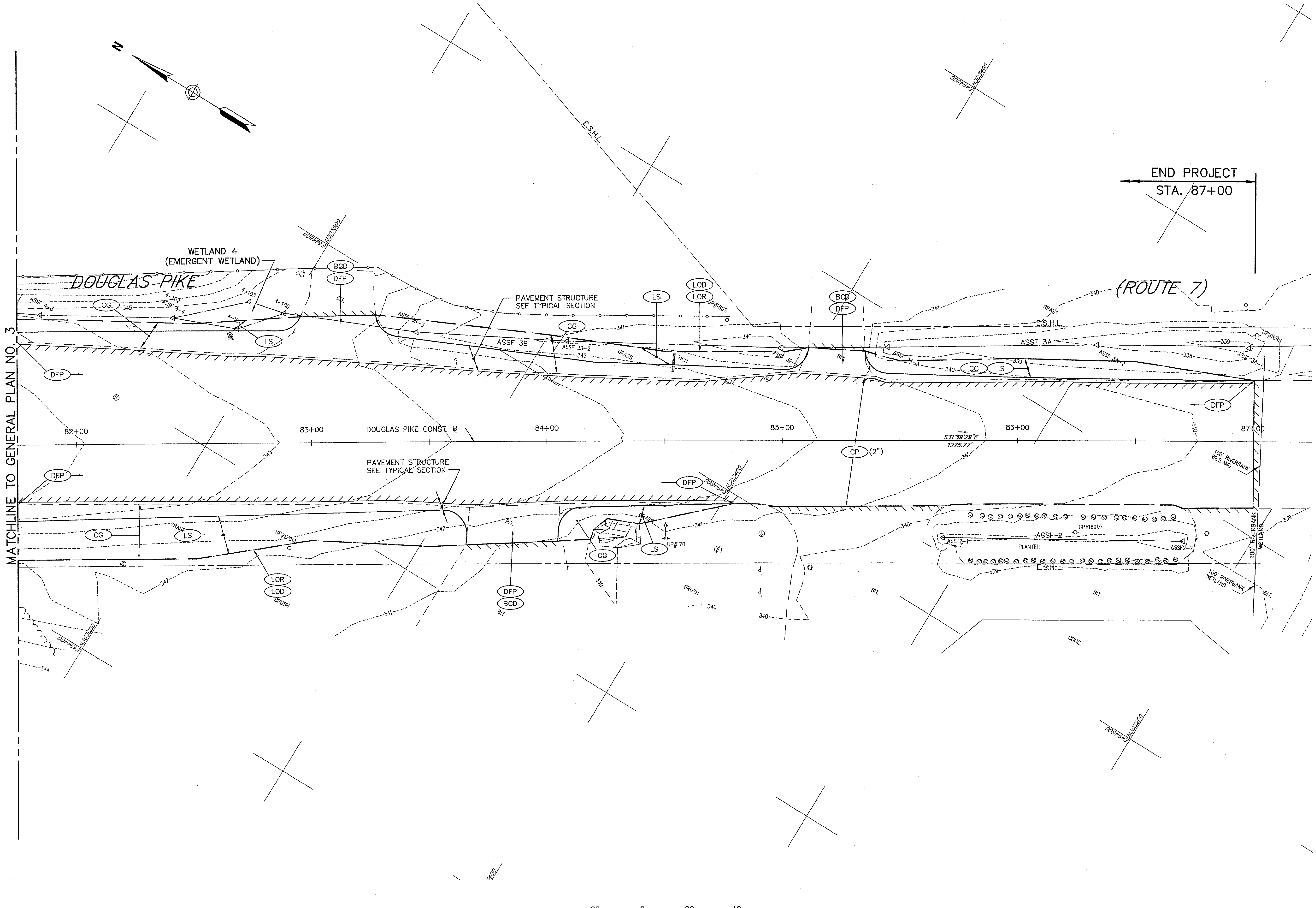
Issued For Construction

Drawing Title _____

General Plan No. GP3-5 2007

Drawing Number _____
H-9
 Sheet of 9 20
 Project Number 71809.20





MATCHLINE TO GENERAL PLAN NO. 3

END PROJECT
STA. 87+00

(ROUTE 7)

DEPARTMENT OF ENVIRONMENTAL MANAGEMENT
OFFICE OF WATER RESOURCES
FRESHWATER WETLANDS PROGRAM
APPROVED WITH CONDITIONS
AS SPECIFIED IN THE LETTER OF APPROVAL
DATED SEP 14 2007, FILE # 07-0389
NO CHARGES ALLOWED WITHOUT PRIOR APPROVAL
APPROVED THIS MUST BE AT CONSTRUCTION SITE
Charles H. Roberts

No.	Revision	Date	Appr.
Designed by	Drawn by	Checked by	
CAD checked by		Approved by	
Scale 1"=20'		Date August 1, 2007	
Project Title			

**Off-Site Roadway
Improvements**

Douglas Pike and George Washington Hwy.
Smithfield, Rhode Island

Issued For Construction

Drawing Title

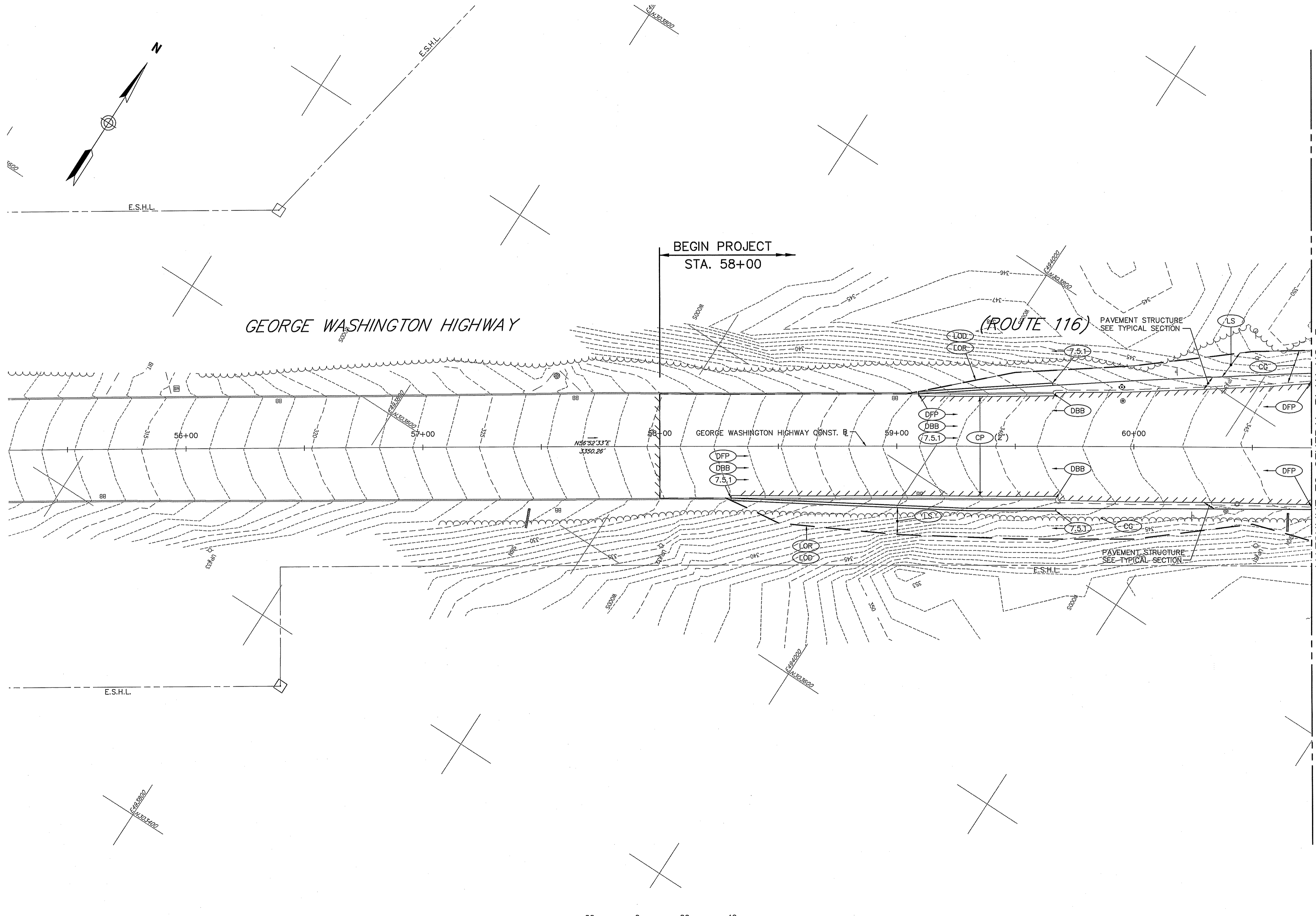
General Plan No. 4 5 2007
SEP

Drawing Number

H-10

Sheet of 10 20

Project Number 71809.20



DEPARTMENT OF ENVIRONMENTAL MANAGEMENT
OFFICE OF WATER RESOURCES
FRESHWATER WETLANDS PROGRAM
APPROVED WITH CONDITIONS
AS SPECIFIED IN THE LETTER OF APPROVAL
DATED SEP 14 2007, FILE # 07-0389
NO CHANGES ALLOWED WITHOUT PRIOR APPROVAL
APPROVED PLANS MUST BE AT CONSTRUCTION SITE

Charles H. ...

No.	Revision	Date	Appr.

Designed by: _____ Drawn by: _____ Checked by: _____
 CAD checked by: _____ Approved by: _____
 Scale 1"=20' Date August 1, 2007
 Project Title _____

Off-Site Roadway Improvements

Douglas Pike and George Washington Hwy.
Smithfield, Rhode Island

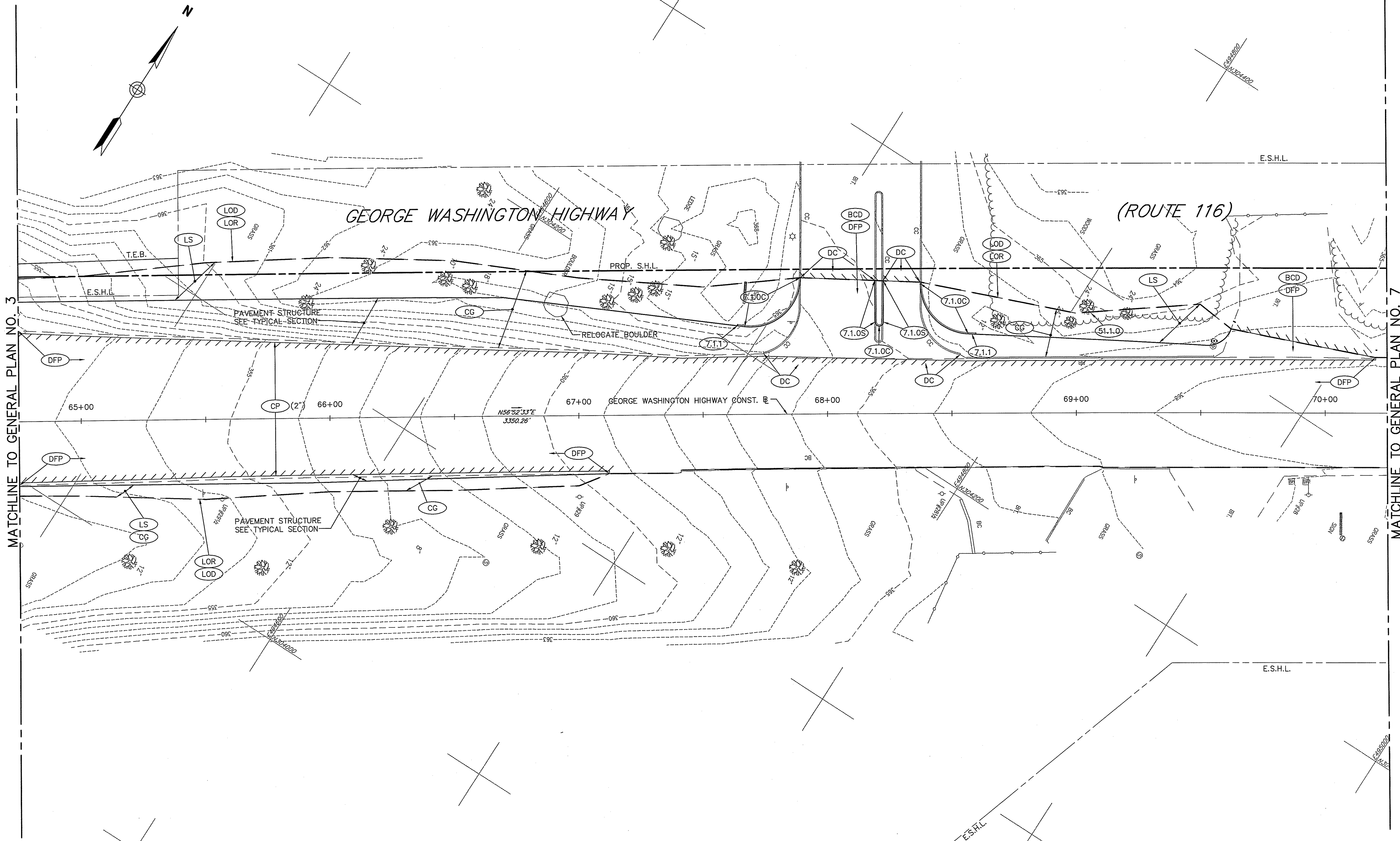
Issued For Construction

General Plan No. 5

SEP - 5 2007

H-11

Sheet of 11 20
Project Number 71809.20



DEPARTMENT OF ENVIRONMENTAL MANAGEMENT
OFFICE OF WATER RESOURCES
FRESHWATER WETLANDS PROGRAM
APPROVED WITH CONDITIONS
AS SPECIFIED IN THE LETTER OF APPROVAL
DATED SEP 14 2007 FILE # 07-0089
NO CHANGES ALLOWED WITHOUT PRIOR APPROVAL
APPROVED PLANS MUST BE AT CONSTRUCTION SITE

Charles A. Walker

No.	Revision	Date	Appr.

Project Title
Off-Site Roadway Improvements

Douglas Pike and George Washington Hwy.
Smithfield, Rhode Island

Issued For Construction

General Plan No. 6

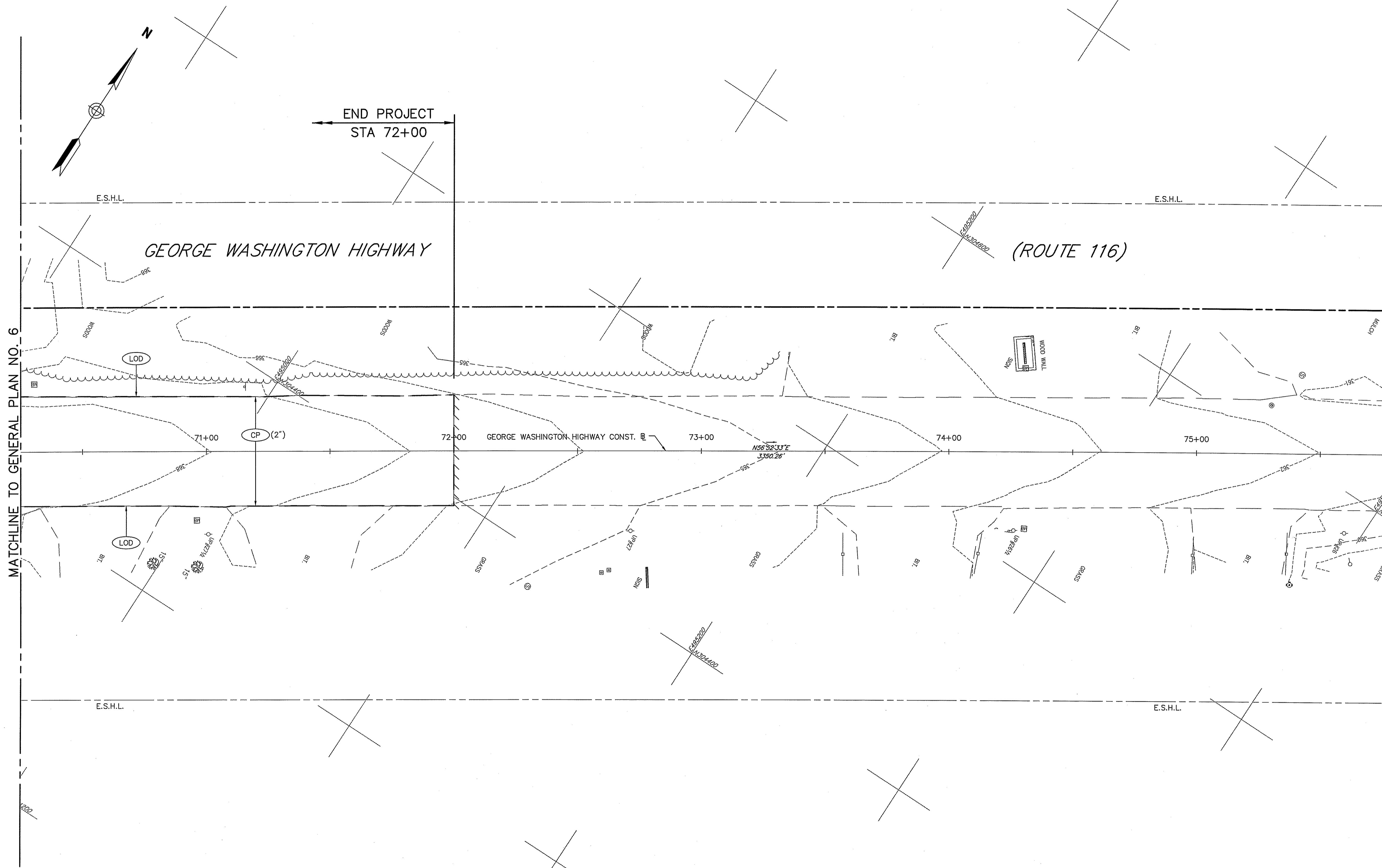
SEP - 5 2007

Drawing Number

H-12

Sheet of 20

Project Number 71809.20



MATCHLINE TO GENERAL PLAN NO. 6

DEPARTMENT OF ENVIRONMENTAL MANAGEMENT
OFFICE OF WATER RESOURCES
FRESHWATER WETLANDS PROGRAM
APPROVED WITH CONDITIONS
AS SPECIFIED IN THE LETTER OF APPROVAL
DATED SEP 14 2007 FILE # 07-0289
NO CHANGES ALLOWED WITHOUT PRIOR APPROVAL
APPROVED PLANS MUST BE AT CONSTRUCTION SITE

Charles H. Harker

No.	Revision	Date	Appd.

Off-Site Roadway Improvements

Douglas Pike and George Washington Hwy.
Smithfield, Rhode Island

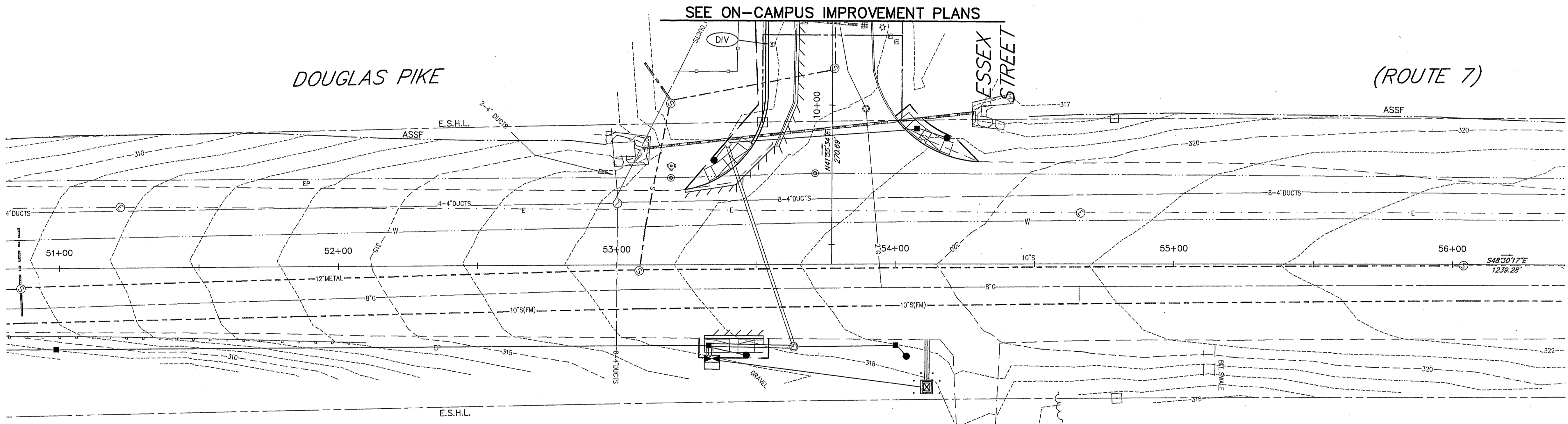
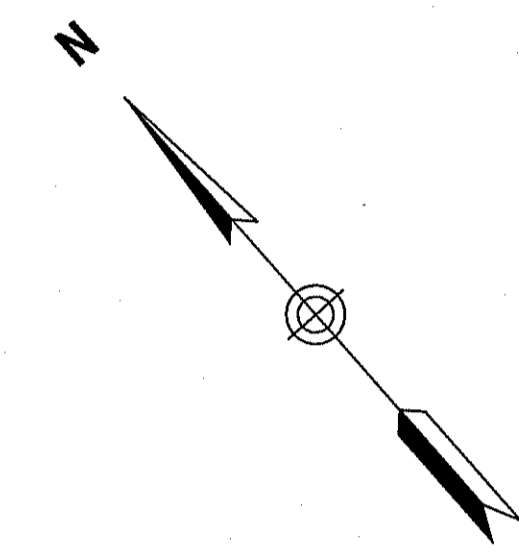
Issued For Construction

General Plan No. 7

SEP 5 2007

H-13

Sheet of
13 20
Project Number
71809.20



DEPARTMENT OF ENVIRONMENTAL MANAGEMENT
OFFICE OF WATER RESOURCES
FRESHWATER WETLANDS PROGRAM
APPROVED WITH CONDITIONS
AS SPECIFIED IN THE LETTER OF APPROVAL
DATED SEP 14 2007 FILE # 07-0289
NO CHANGES ALLOWED WITHOUT PRIOR APPROVAL
APPROVED PLANS MUST BE AT CONSTRUCTION SITE

Charles A. Herbert

No.	Revision	Date	Appr.

Project Title
Off-Site Roadway Improvements
Douglas Pike and George Washington Hwy.
Smithfield, Rhode Island

Issued For Construction

Drawing Title

Drainage & Utility Plan No. 1

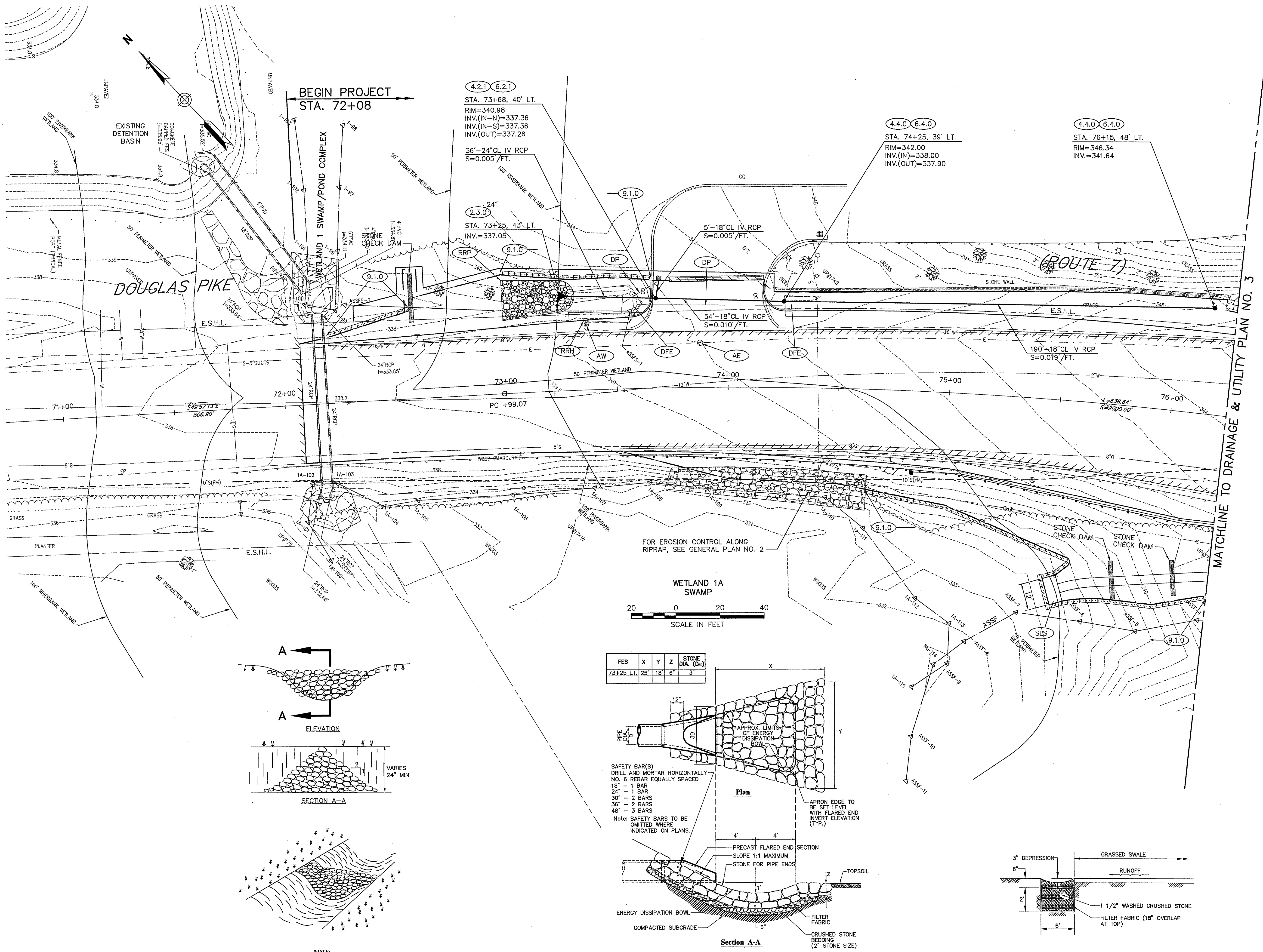
SEP - 5 2007
Drawing Number

H-14

Sheet of 14 20

Project Number 71809.20





DEPARTMENT OF ENVIRONMENTAL MANAGEMENT
OFFICE OF WATER RESOURCES
FRESHWATER WETLANDS PROGRAM
APPROVED WITH CONDITIONS
AS SPECIFIED IN THE LETTER OF APPROVAL
DATED SEP 14 2007 FILE # 07-0289
NO CHANGES ALLOWED WITHOUT PRIOR APPROVAL
APPROVED PLANS MUST BE AT CONSTRUCTION SITE

Charles H. Barber

No.	Revision	Date	Appr.

Designed by: _____ Drawn by: _____ Checked by: _____
 CAD checked by: _____ Approved by: _____
 Scale: 1"=20' Date: August 1, 2007
 Project Title: _____

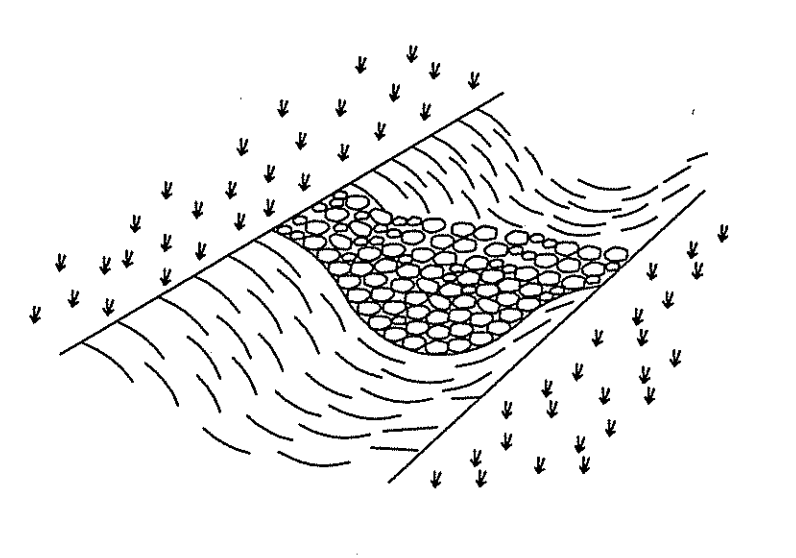
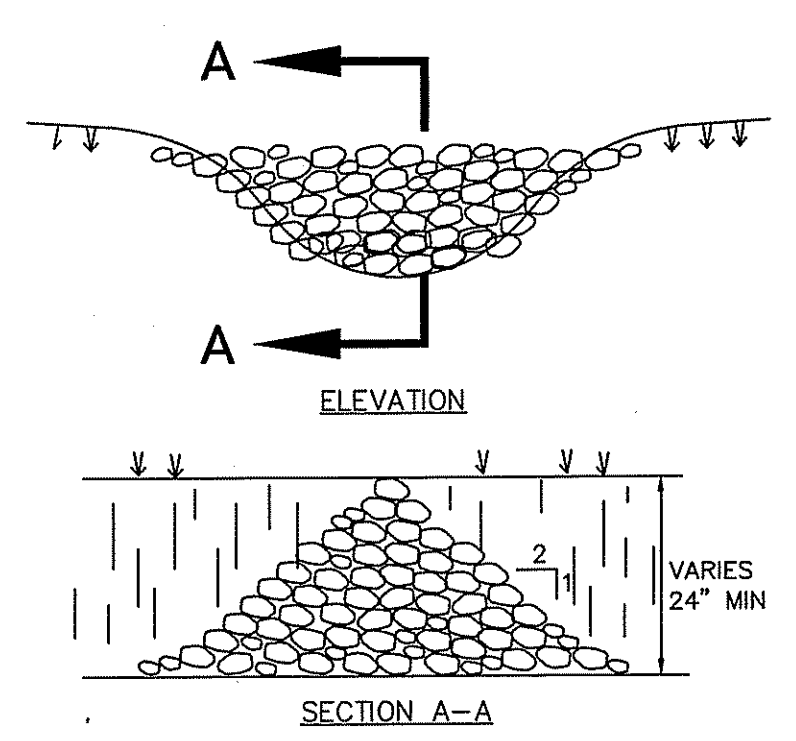
Off-Site Roadway Improvements
 Douglas Pike and George Washington Hwy.
 Smithfield, Rhode Island
 Issued for

Issued For Construction

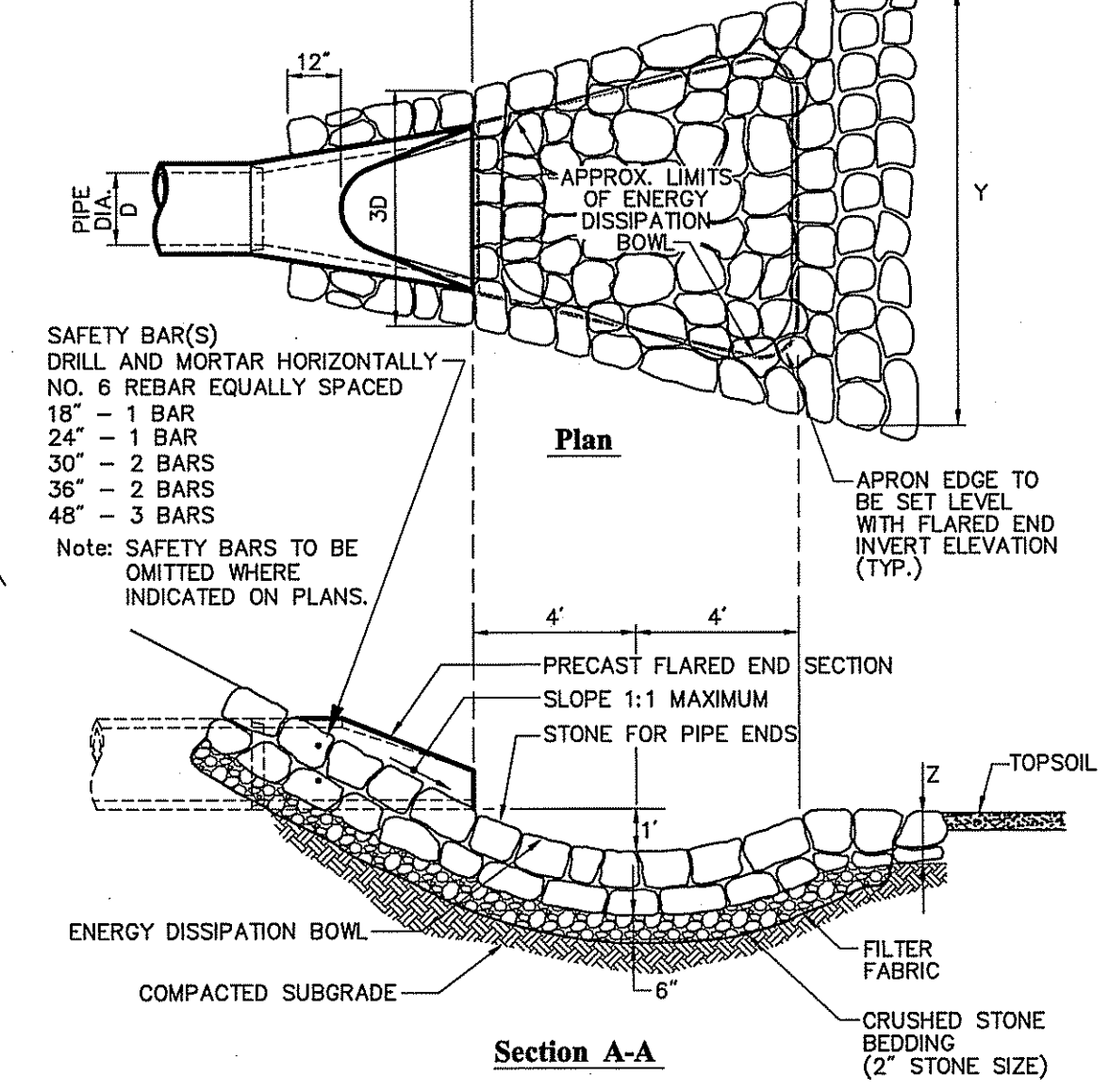
Drawing Title

Drainage & Utility Plan No. 2
 SEP - 5 2007

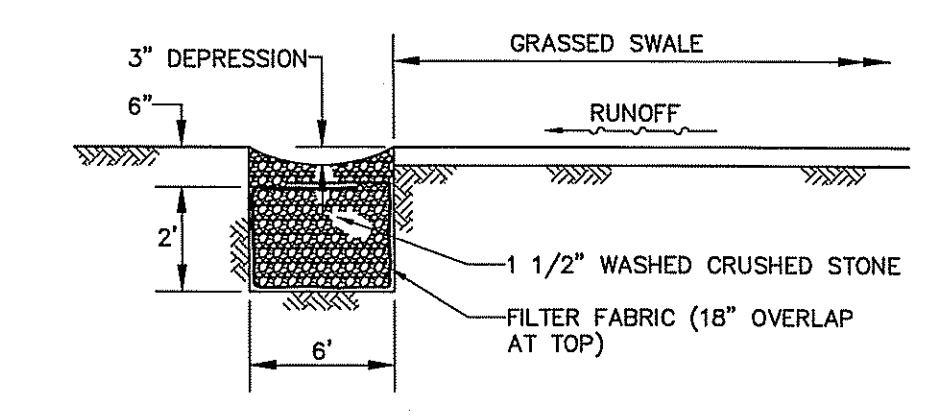
Drawing Number
H-15
 Sheet of 15 20
 Project Number 71809.20



FES	X	Y	Z	STONE DIA. (D ₅₀)
73+25 LT.	25'	18'	6"	3"

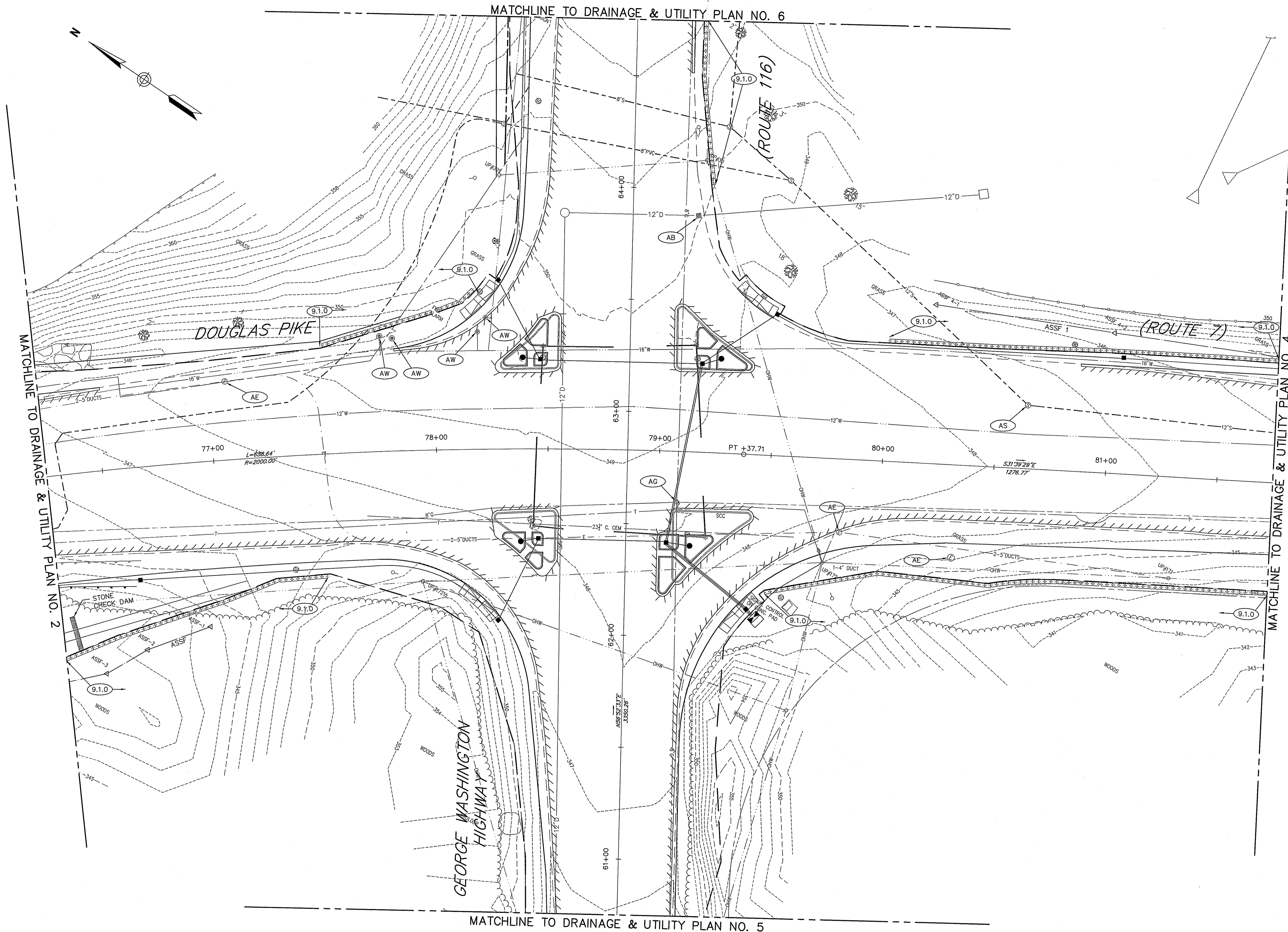


Flared End Section (FES) with Stone Protection
 N.T.S. Source: VHB 6/03 REV LD_134



Stone Level Spreader
 N.T.S. Source: VHB 6/03 REV LD_134

Stone Check Dam
 S-1313RI N.T.S.



DEPARTMENT OF ENVIRONMENTAL MANAGEMENT
OFFICE OF WATER RESOURCES
FRESHWATER WETLANDS PROGRAM
APPROVED WITH CONDITIONS
AS SPECIFIED IN THE LETTER OF APPROVAL
DATE: SEP 14 2007 FILE # 07-0289
NO CHANGES ALLOWED WITHOUT PRIOR APPROVAL
APPROVED PLANS MUST BE AT CONSTRUCTION SITE
Charles H. Barber

No.	Revision	Date	Appr.

Designed by _____ Drawn by _____ Checked by _____
CAD checked by _____ Approved by _____
Scale 1"=20' Date August 1, 2007
Project Title _____

Off-Site Roadway Improvements

Douglas Pike and George Washington Hwy.
Smithfield, Rhode Island

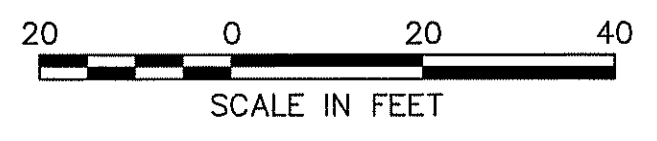
Issued For Construction

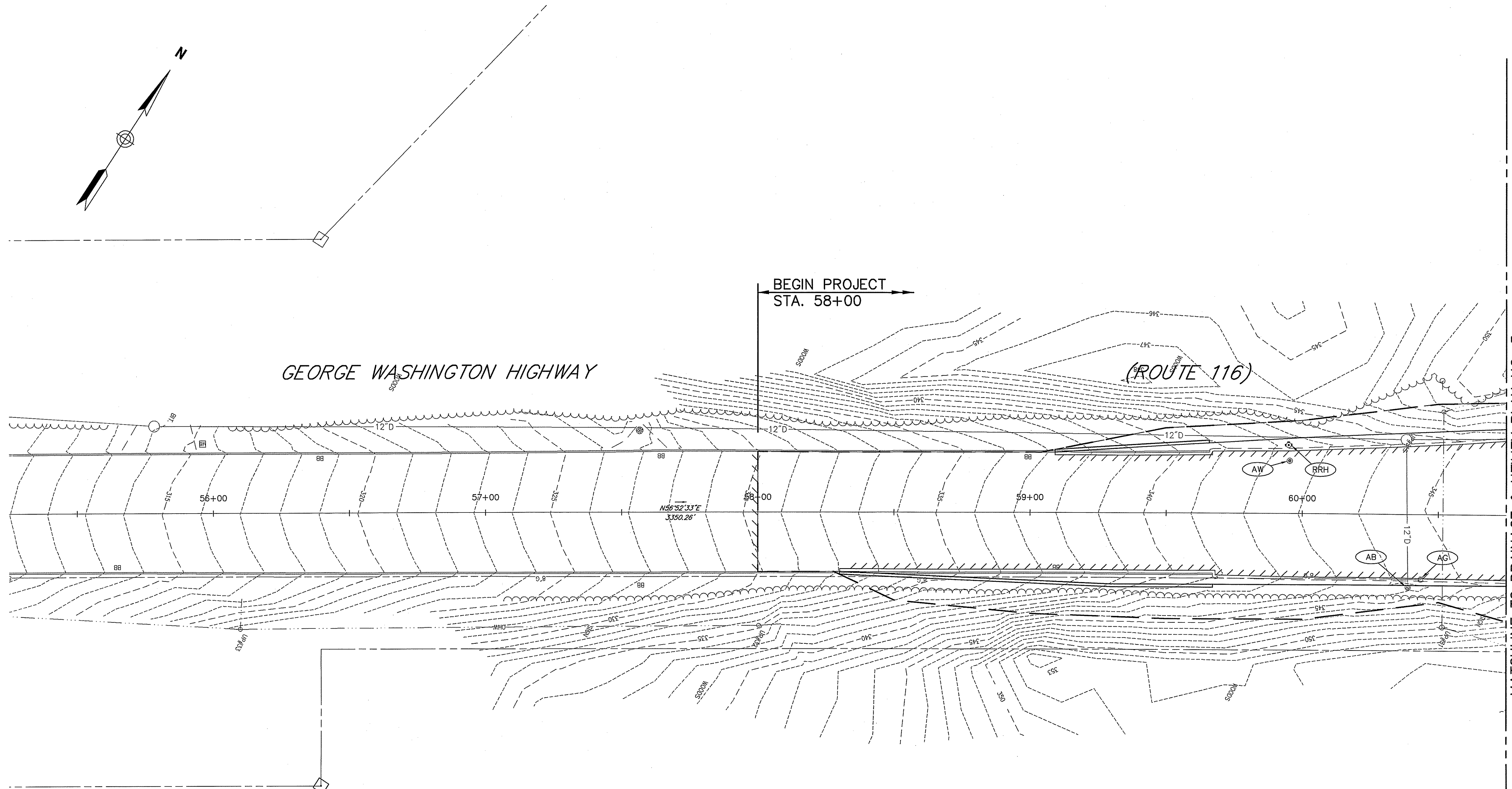
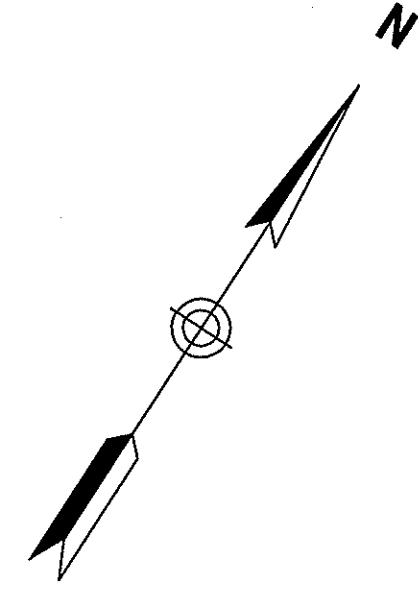
Drainage & Utility Plan No. 3

SEP - 5 2007

Drawing Number
H-16

Sheet of
16 20
Project Number
71809.20





DEPARTMENT OF ENVIRONMENTAL MANAGEMENT
OFFICE OF WATER RESOURCES
FRESHWATER WETLANDS PROGRAM
APPROVED WITH CONDITIONS
AS SPECIFIED IN THE LETTER OF APPROVAL
DATED SEP 14 2007 FILE # 07-0289
NO CHANGES ALLOWED WITHOUT PRIOR APPROVAL
APPROVED PLANS MUST BE AT CONSTRUCTION SITE

Charles A. Herbert

No.	Revision	Date	Appv.

Designed by _____ Drawn by _____ Checked by _____
CAD checked by _____ Approved by _____
Scale 1"=20' Date August 1, 2007
Project Title _____

Off-Site Roadway Improvements

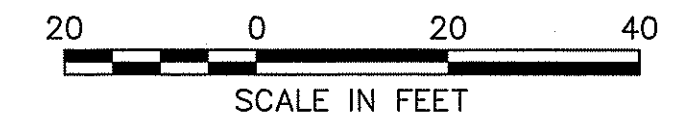
Douglas Pike and George Washington Hwy.
Smithfield, Rhode Island

Issued For Construction

Drawing Title _____

Drainage & Utility
Plan No. 5 SEP - 5 2007

Drawing Number _____



H-18

Sheet of
18 20

Project Number
71809.20

