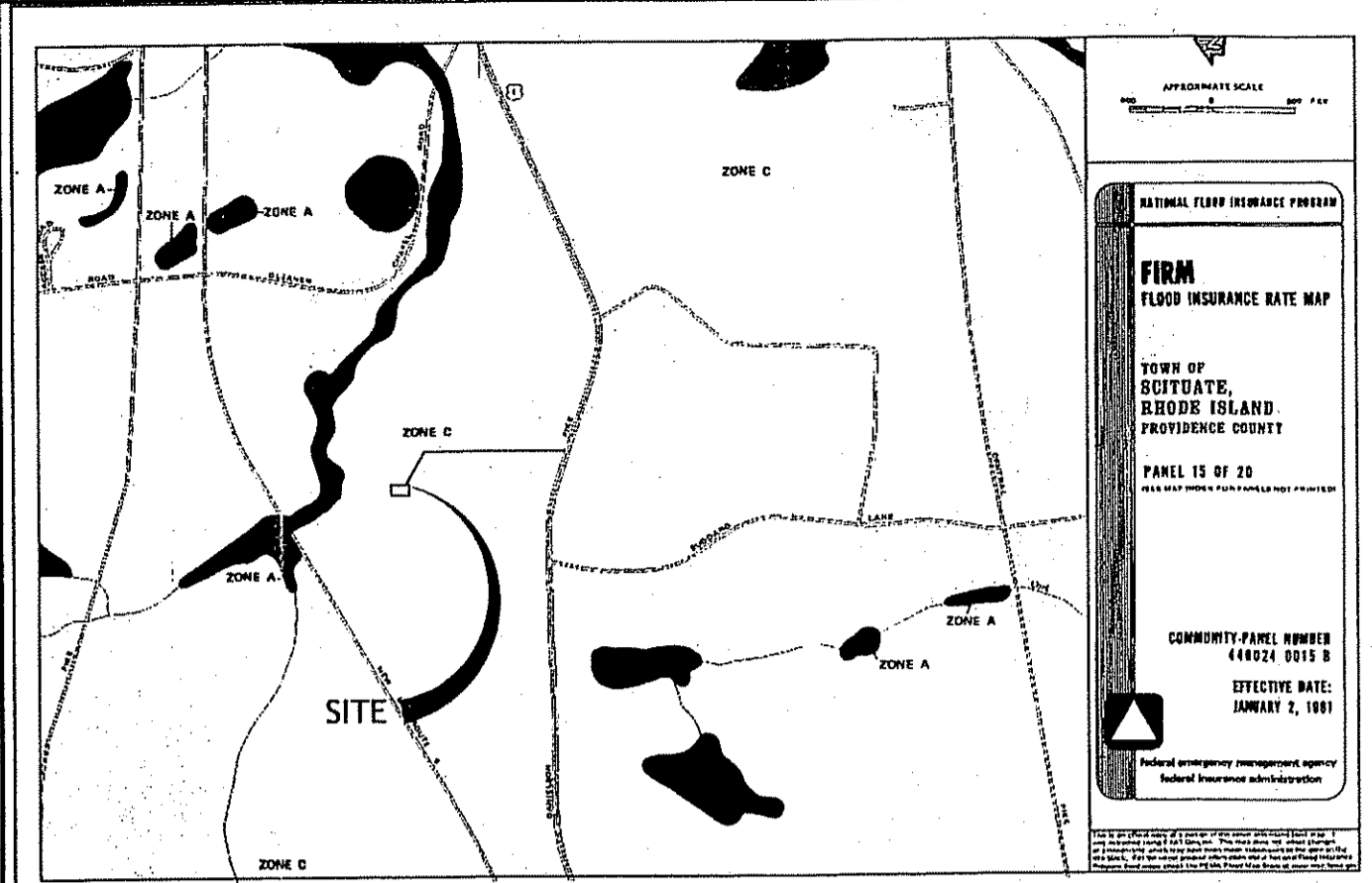
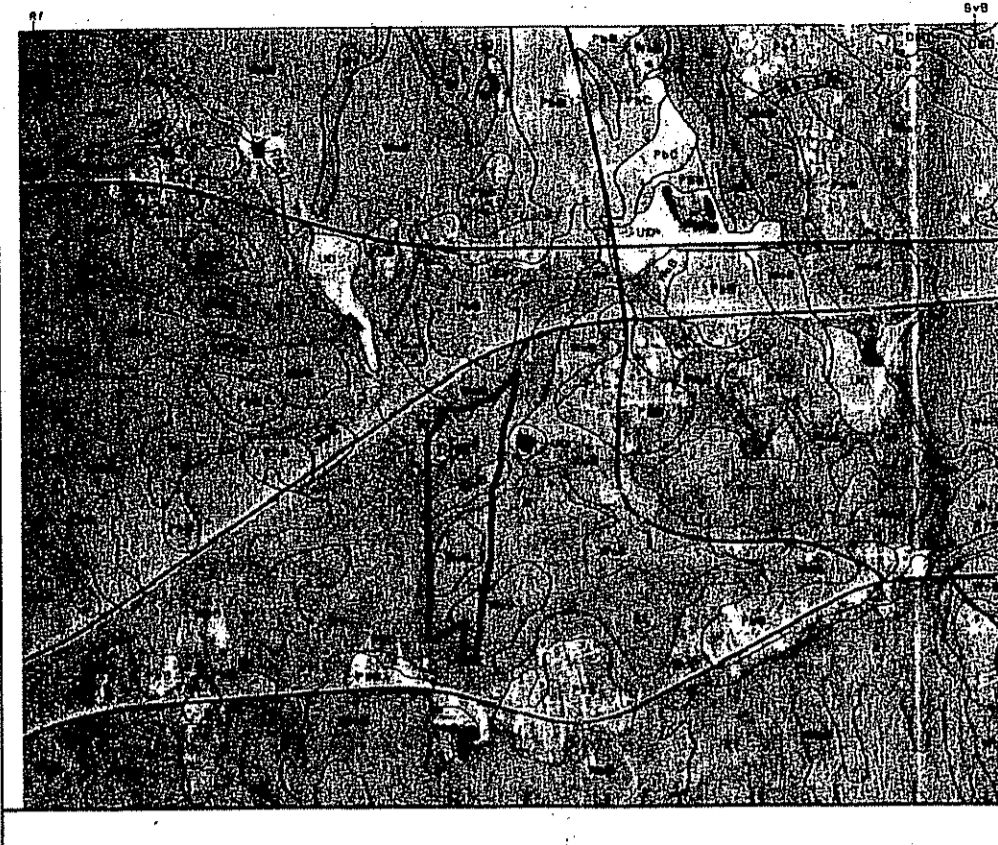


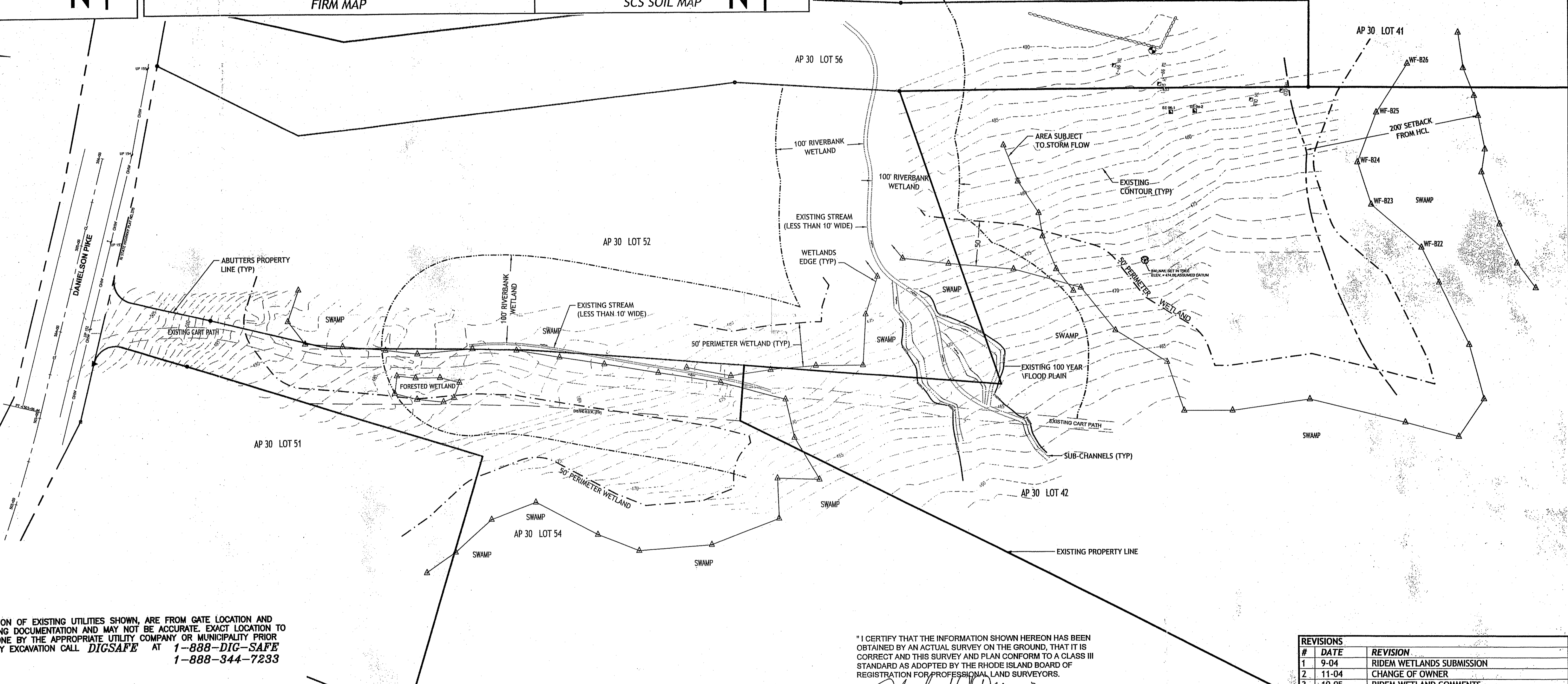
LOCUS MAP
NOT TO SCALE



FIRM MAP

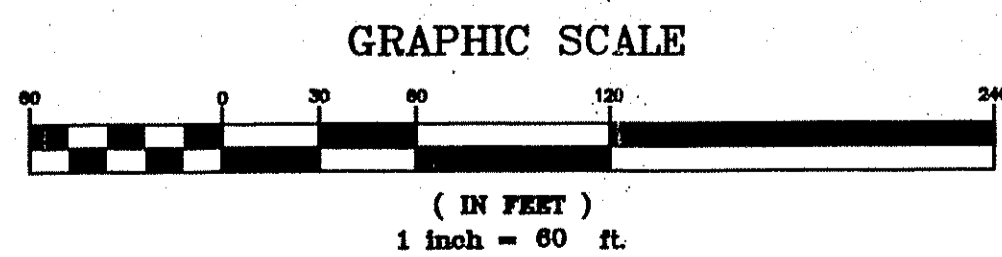


SCS SOIL MAP



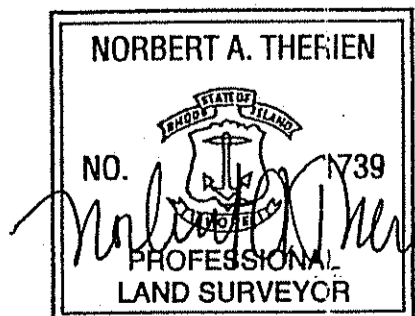
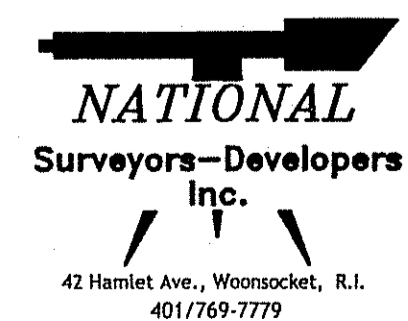
LOCATION OF EXISTING UTILITIES SHOWN, ARE FROM GATE LOCATION AND EXISTING DOCUMENTATION AND MAY NOT BE ACCURATE. EXACT LOCATION TO BE DONE BY THE APPROPRIATE UTILITY COMPANY OR MUNICIPALITY PRIOR TO ANY EXCAVATION CALL **DIGSAFE** AT **1-888-DIG-SAFE** OR **1-888-344-7233**

- NOTES:**
- EXISTING TOPOGRAPHIC MAPPING AND BOUNDARY SURVEY WAS COMPLETED BY NATIONAL LAND SURVEYORS DEVELOPERS, INC. IN JUNE 2004.
 - WETLAND RESOURCES AND HYDRAULIC CONDUCTIVITY LINE DELINEATED BY NATURAL RESOURCE SERVICES, INC ON SEPTEMBER 10, 2002, MAY 15, 2003, AND JULY 2006.
 - THE 100-YEAR FLOODPLAIN WAS DELINEATED BY JCE, INC. IN JUNE 2006, IN A REPORT ENTITLED "HYDROLOGIC ANALYSIS REPORT FOR PLAT 30 LOT 11 SCITUATE, RHODE ISLAND".



"I CERTIFY THAT THE INFORMATION SHOWN HEREON HAS BEEN OBTAINED BY AN ACTUAL SURVEY ON THE GROUND, THAT IT IS CORRECT AND THIS SURVEY AND PLAN CONFORM TO A CLASS III STANDARD AS ADOPTED BY THE RHODE ISLAND BOARD OF REGISTRATION FOR PROFESSIONAL LAND SURVEYORS.

BY: *Robert A. Therien*
ROBERT A. THERIEN P.L.S.



#	DATE	REVISION
1	9-04	RIDEM WETLANDS SUBMISSION
2	11-04	CHANGE OF OWNER
3	10-05	RIDEM WETLAND COMMENTS
4	8-06	RIDEM WETLAND COMMENTS
5	4-07	RIDOT PAPA SUBMISSION

RICHARD & RHONDA CUCINO
DANIELSON PIKE
SCITUATE, RHODE ISLAND
AP 30 LOT 42

EXISTING CONDITIONS

MAY 2007

PAGE 1 OF 1

RECEIVED
AUG 30 2007