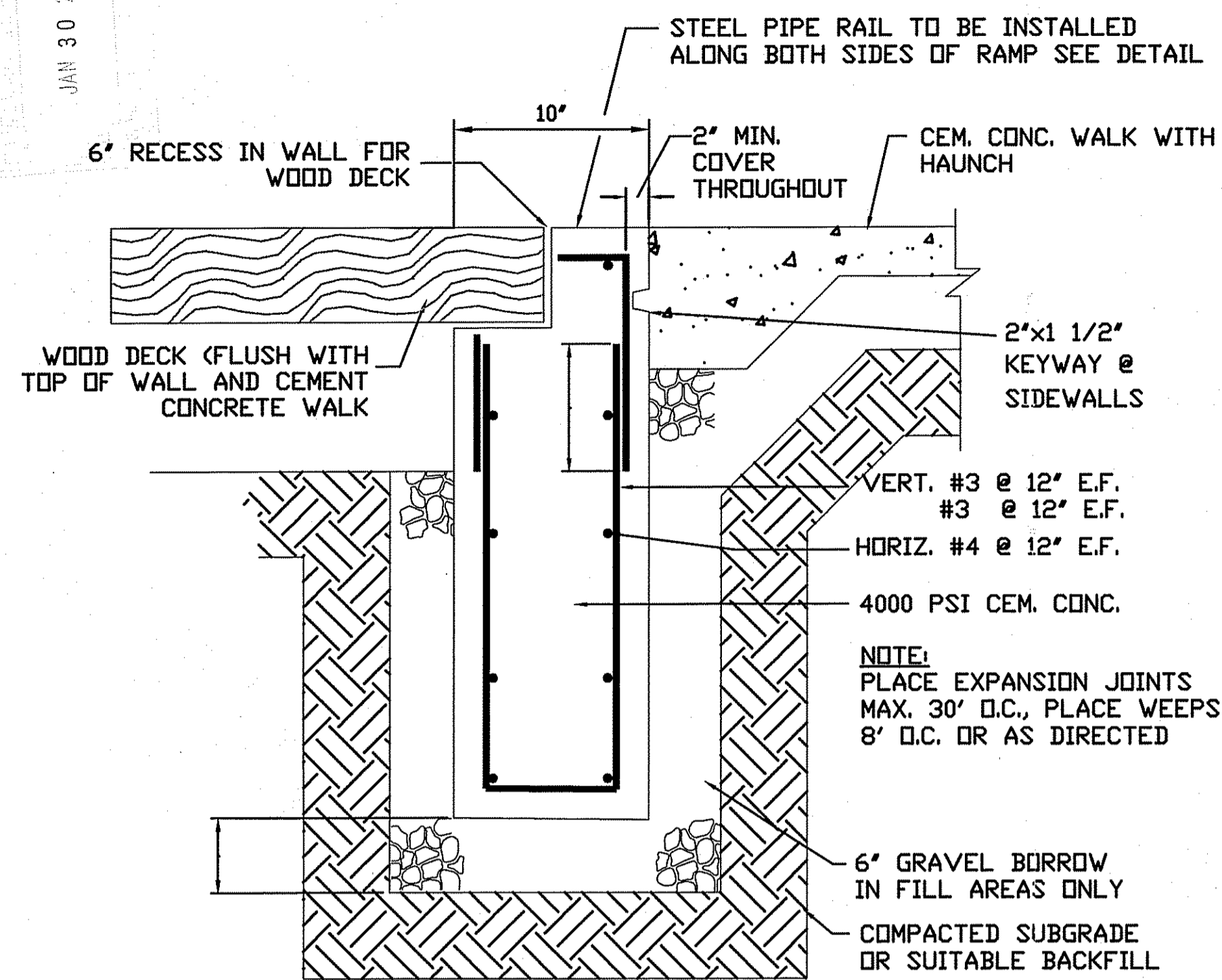
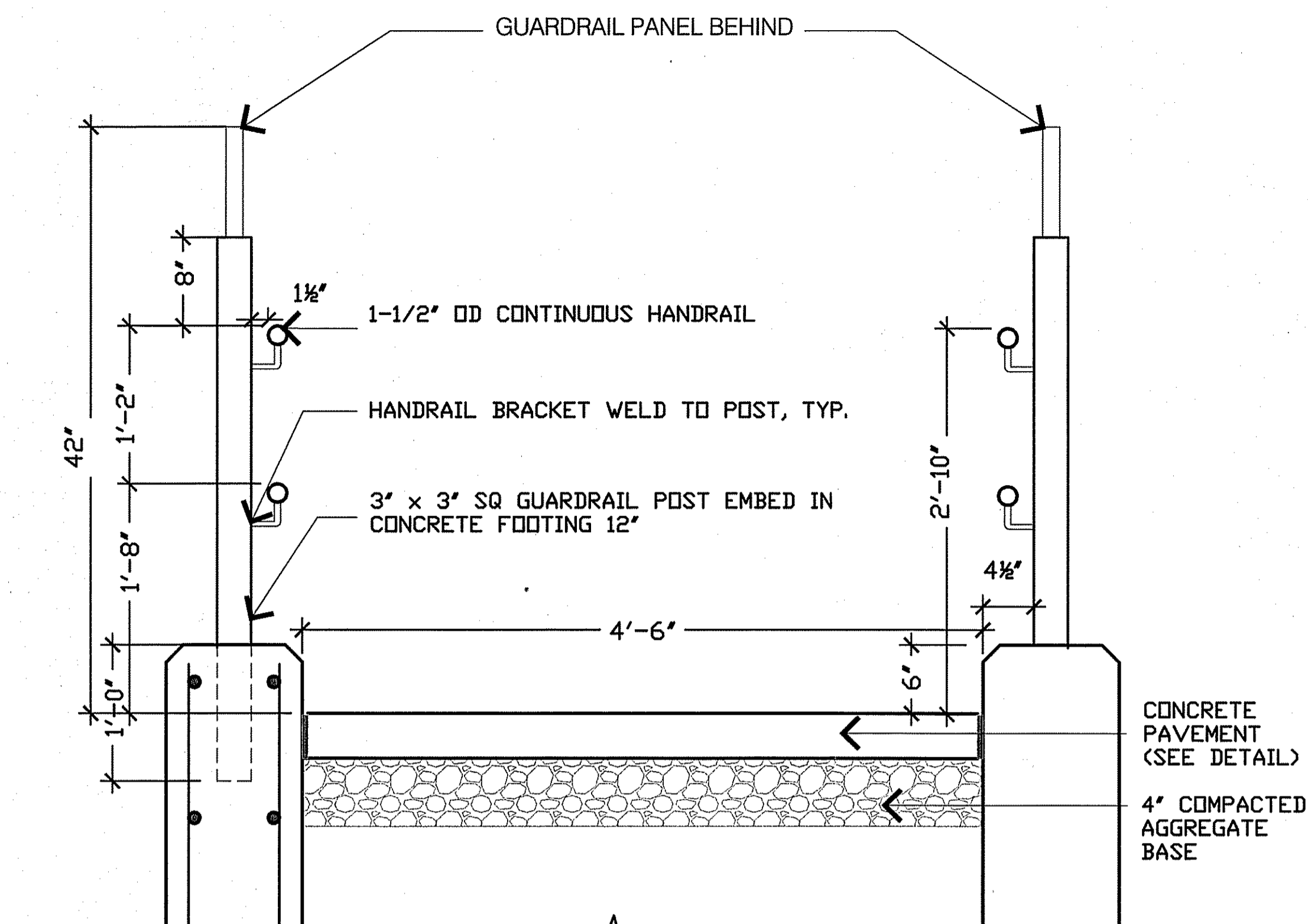


JAN 30 2008



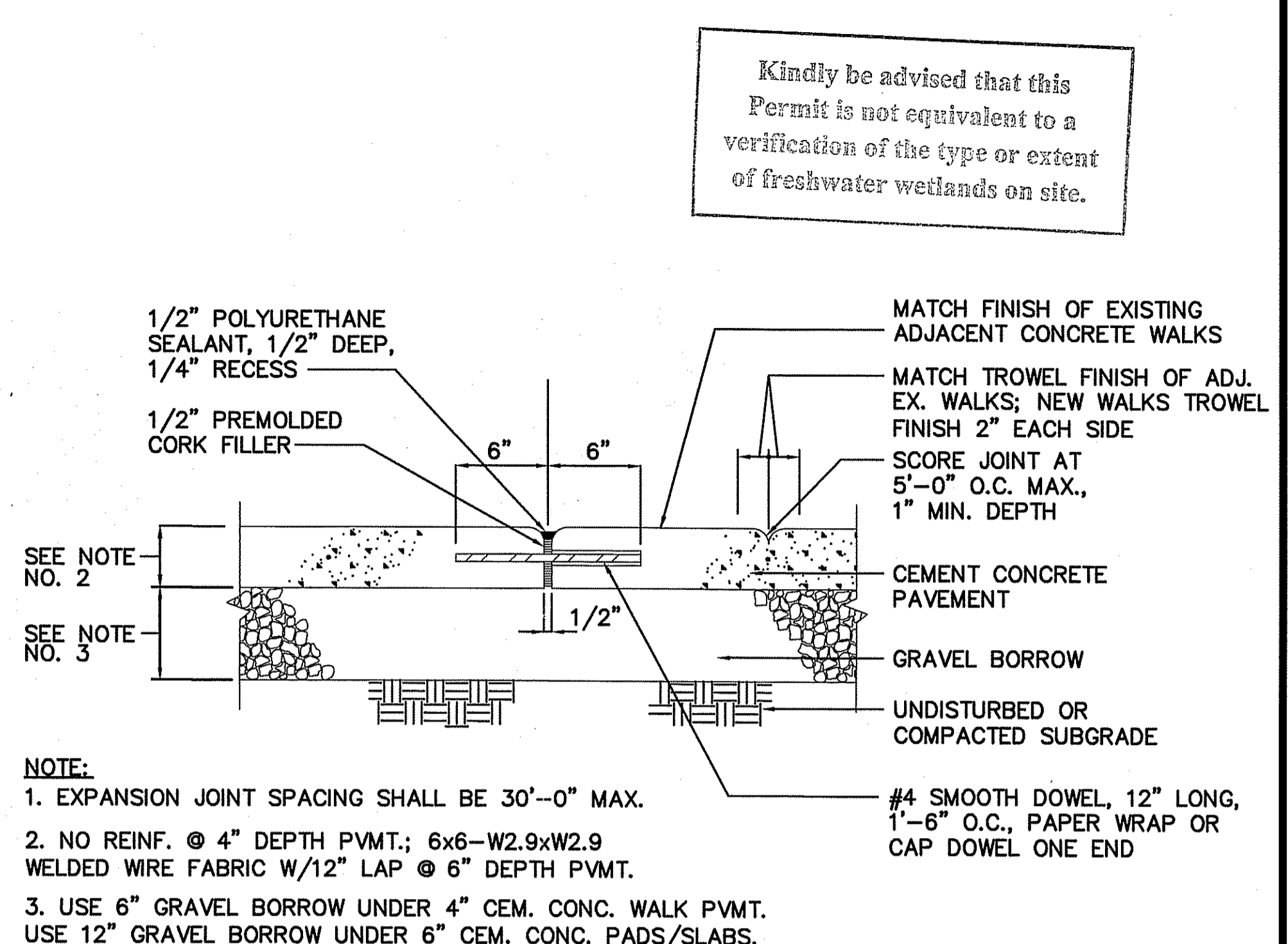
1 RETAINING/HEADWALL DETAIL (TYPICAL)

NOT TO SCALE



2 CEMENT CONCRETE WALK AND EXPANSION JOINTS (TYPICAL)

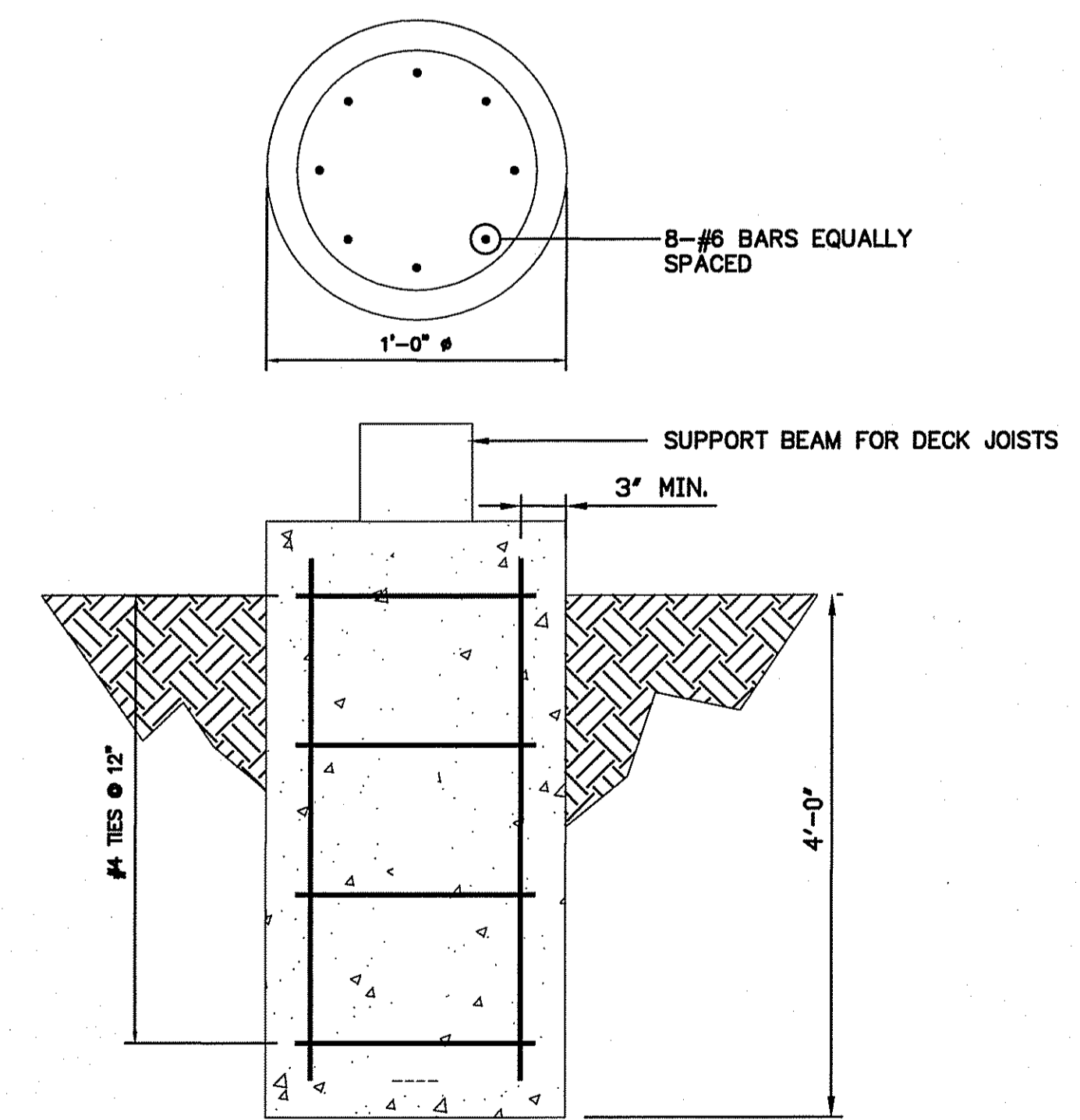
NOT TO SCALE



3 CEMENT CONCRETE WALK AND EXPANSION JOINTS (TYPICAL)

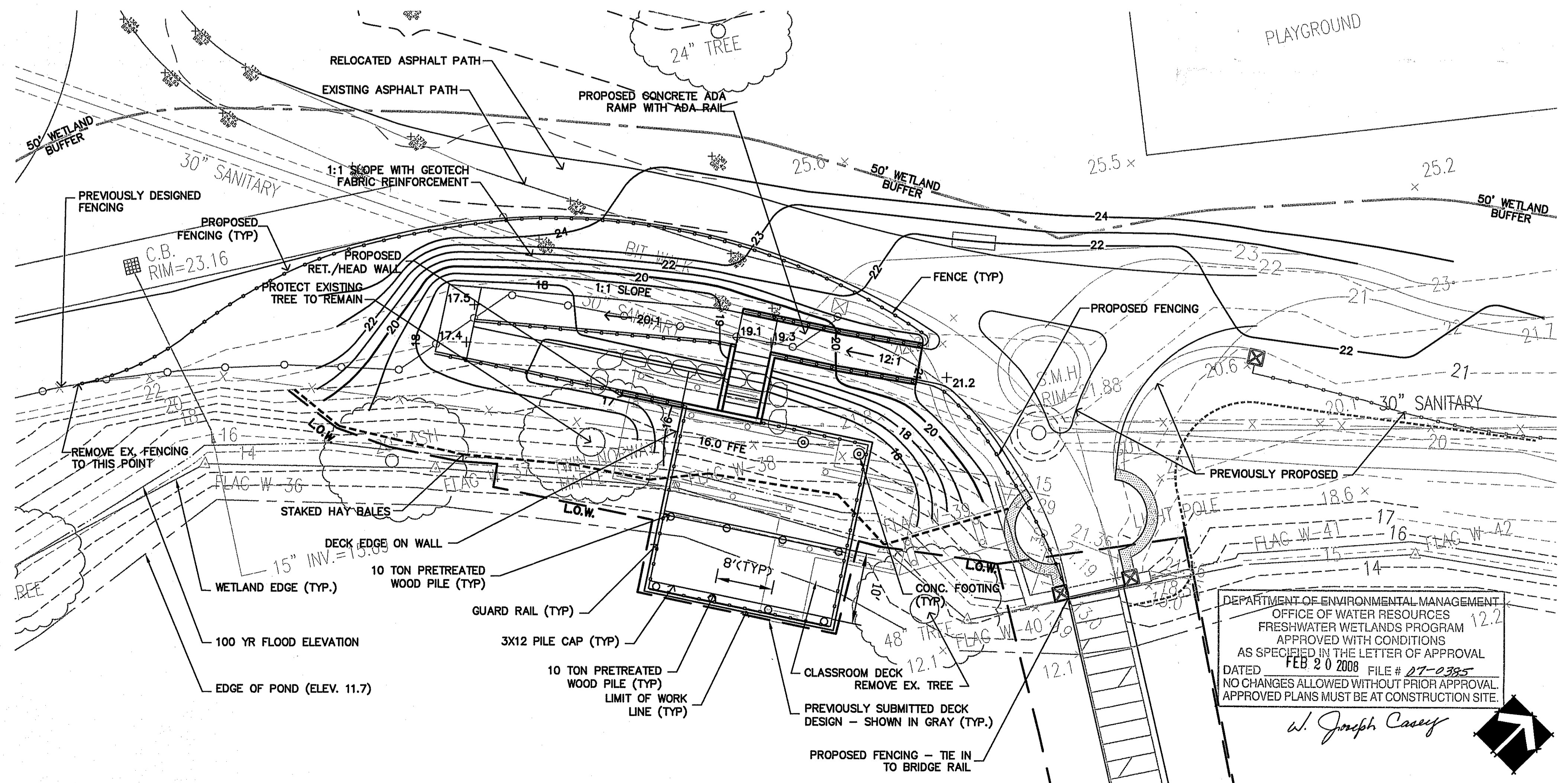
NOT TO SCALE

- NOTE:
1. CONCRETE SHALL HAVE A MINIMUM 28-DAY COMPRESSIVE STRESS, FC=4000 PSI.
 2. REINFORCING STEEL SHALL CONFORM TO ASTM A615 GRADE 60.
 3. CONCRETE COVER OVER REINFORCING ON SIDES AND BOTTOM SHALL BE 3".



4 CONCRETE FOOTING (TYPICAL)

NOT TO SCALE



5 NEW OUTDOOR CLASSROOM DECK - LAYOUT AND GRADING

PLAN

SCALE: 1" = 10'-0"

Kindly be advised that this Permit is not equivalent to a verification of the type or extent of freshwater wetlands on site.

- NOTE:
1. EXPANSION JOINT SPACING SHALL BE 30'-0" MAX.
 2. NO REINF. @ 4" DEPTH PVMT.; 6x6-W2.9xW2.9 WELDED WIRE FABRIC W/12" LAP @ 6" DEPTH PVMT.
 3. USE 6" GRAVEL BORROW UNDER 4" CEM. CONC. WALK PVMT. USE 12" GRAVEL BORROW UNDER 6" CEM. CONC. PADS/SLABS.

DEPARTMENT OF ENVIRONMENTAL MANAGEMENT
OFFICE OF WATER RESOURCES
FRESHWATER WETLANDS PROGRAM
APPROVED WITH CONDITIONS
AS SPECIFIED IN THE LETTER OF APPROVAL
DATED FEB 20 2008 FILE # 07-0385
NO CHANGES ALLOWED WITHOUT PRIOR APPROVAL
APPROVED PLANS MUST BE AT CONSTRUCTION SITE.

W. Joseph Casey

PERMIT DOCUMENTS- REVISED JANUARY 2008

Weston & Sampson
When it's essential, it's West. & Sampson.
1899
Weston & Sampson
100 Foxborough Blvd., S.250
Foxborough, MA 02035

No.	Date	Dr. By	Chk. By	App. By	DATE
		A	P	R	O
					V
					E
					D

Town of South Kingstown, Rhode Island
Public Services Department
Suaghtucket Greenway Improvements - Phase 2
OUTDOOR CLASSROOM

CADD NO. 2060333-LM AS NOTED
JOB NO. 2060333
DR. BY MSB
CHK. BY KN
APP. BY ERB
CONTRACT: AS NOTED

FILE NO. 07-0385