

TEST HOLE DATA

DATE: 8/10/06

TH1
0'-3" Ap, SIL, 10YR 3/3
3'-12" Bw, SL, 10YR 4/6
12'-46" Bw, G, SL, 2.5YR 5/6
46'-120" C, ST, CB, G, LS, 2.5YR 6/3
NO LEDGE AT 120"
ESHW: 96"

TH2
0'-3" Ap, SIL, 10YR 3/3
3'-18" Bw, SL, 10YR 4/6
18'-36" Bw, G, SL, 2.5YR 5/6
36'-72" C, ST, CB, G, SL, 2.5YR 5/3
72'-120" C2, ST, CB, G, LS, 2.5YR 6/3
NO LEDGE AT 120"
ESHW: 48"

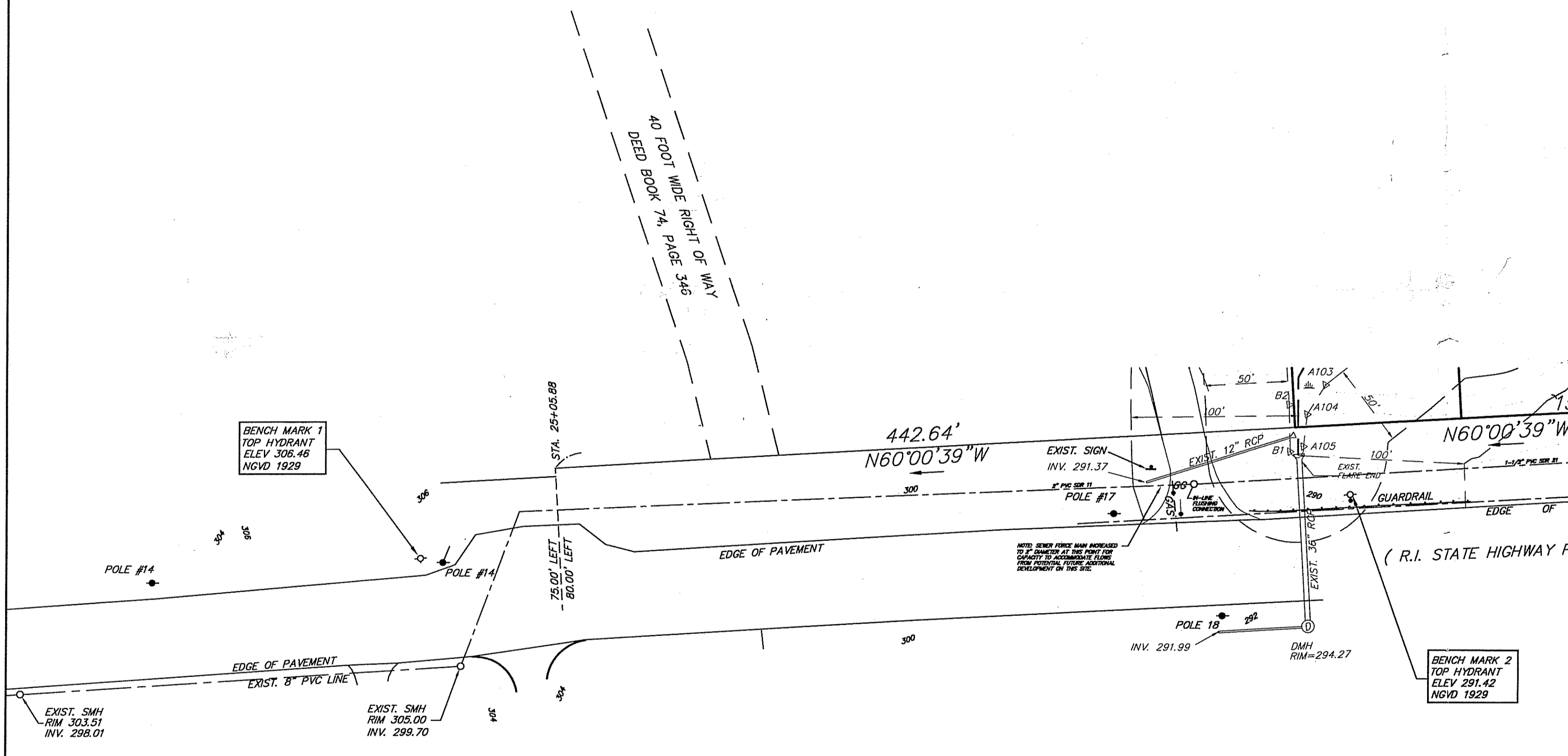
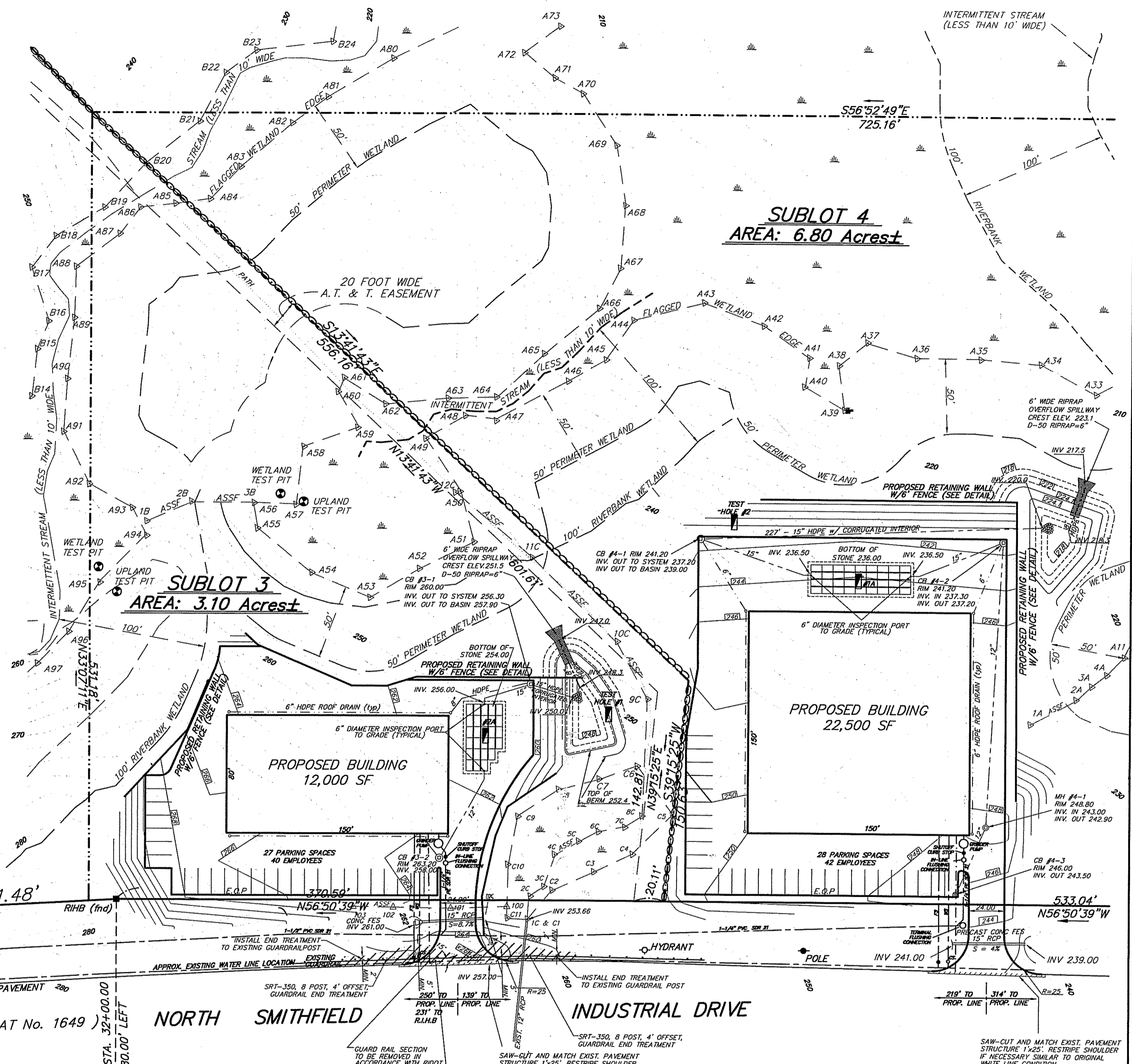
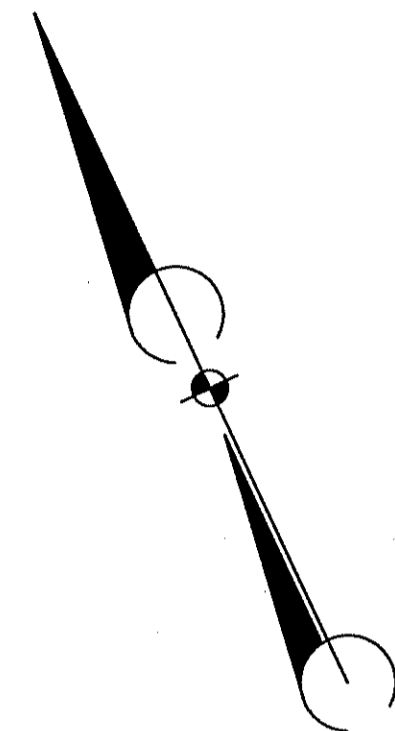
DATE: 1/3/07

TH1A
0'-9" Ap, SIL, 10YR 3/4
9'-30" Bw, SL, 10YR 5/6
30'-120" C, ST, CB, G, LS, 2.5YR 5/3
NO LEDGE AT 120"
ESHW: 60"

TH2A
0'-9" Ap, SIL, 10YR 3/4
9'-44" Bw, SL, 2.5YR 5/4
44'-120" C, ST, CB, G, LS, 2.5YR 5/3
NO LEDGE AT 120"
ESHW: 76"

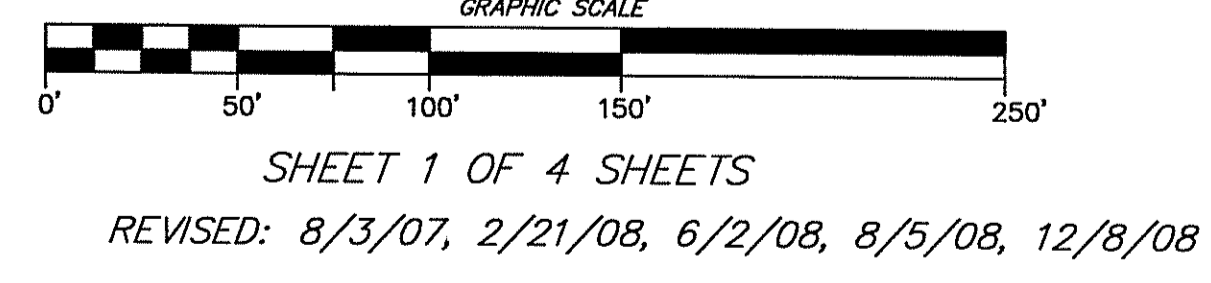
NOTES:

- "ALL WORK WITHIN THE STATE'S RIGHT OF WAY WILL CONFORM TO THE RIDOT'S STANDARD SPECIFICATIONS FOR ROAD AND BRIDGE CONSTRUCTION, 2004 EDITION INCLUDING ALL REVISION AND STANDARD DETAILS, JUNE 15, 1998, AS AMENDED BY REVISIONS."
- TRAFFIC CONTROL MEASURES DURING CONSTRUCTION TO BE IN ACCORDANCE WITH THE M.U.T.C.D. 2003 (MANUAL OF UNIFORM TRAFFIC CONTROL DEVICES)
- RIDOT UTILITY PERMIT WILL NEED TO BE OBTAINED FOR INSTALLATION OF SEWER AND WATER SERVICES WITHIN HIGHWAY R.O.W AREA.
- INSTALLATION AND MATERIAL SHALL CONFORM TO NORTH SMITHFIELD SEWER STANDARDS.



DEPARTMENT OF ENVIRONMENTAL MANAGEMENT
OFFICE OF WATER RESOURCES
FRESHWATER WETLANDS PROGRAM
APPROVED WITH CONDITIONS
AS SPECIFIED IN THE LETTER OF APPROVAL
DATED JAN 21 2009 FILE # 07-0397
NO CHANGES ALLOWED WITHOUT PRIOR APPROVAL
APPROVED PLANS MUST BE AT CONSTRUCTION SITE.

SITE PLAN
FOR
**INDUSTRIAL DRIVE
COMMERCE PARK
PLAT 5, LOT 76**
NORTH SMITHFIELD, RHODE ISLAND
DATE: APRIL, 2007
SCALE: 1 INCH EQUALS 50 FEET



LEGEND

- WETLAND AREA
- WETLAND FLAG
- EXIST. CONTOUR LINE
- FIRE HYDRANT
- WATER GATE
- STONE WALL
- GUARD RAIL
- EXISTING PROPERTY LINE
- PROPOSED PROPERTY LINE
- WETLAND/UPLAND TEST PITS
- SOIL EVALUATION
- STREAM
- RHODE ISLAND HIGHWAY BOUND FOUND
- SEWER LINE
- WATER LINE
- DRAIN LINE
- GAS LINE
- PROPOSED UTILITY POLE

PAUL J. GADOURY
NO. 3637
REGISTERED
PROFESSIONAL ENGINEER

PROPOSED DRAINAGE AND UTILITIES
BY: PAUL J. GADOURY, P.E.
1 SOUTHBURY ROAD
CUMBERLAND, RHODE ISLAND 02864

Kindly be advised that this
Permit is not equivalent to a
verification of the type or extent
of freshwater wetlands on site.

MARC N. NYBERG
NO. 1797
PROFESSIONAL
LAND SURVEYOR

Marc N. Nyberg Associates, Inc.
Land Surveyors
Planners
GPS

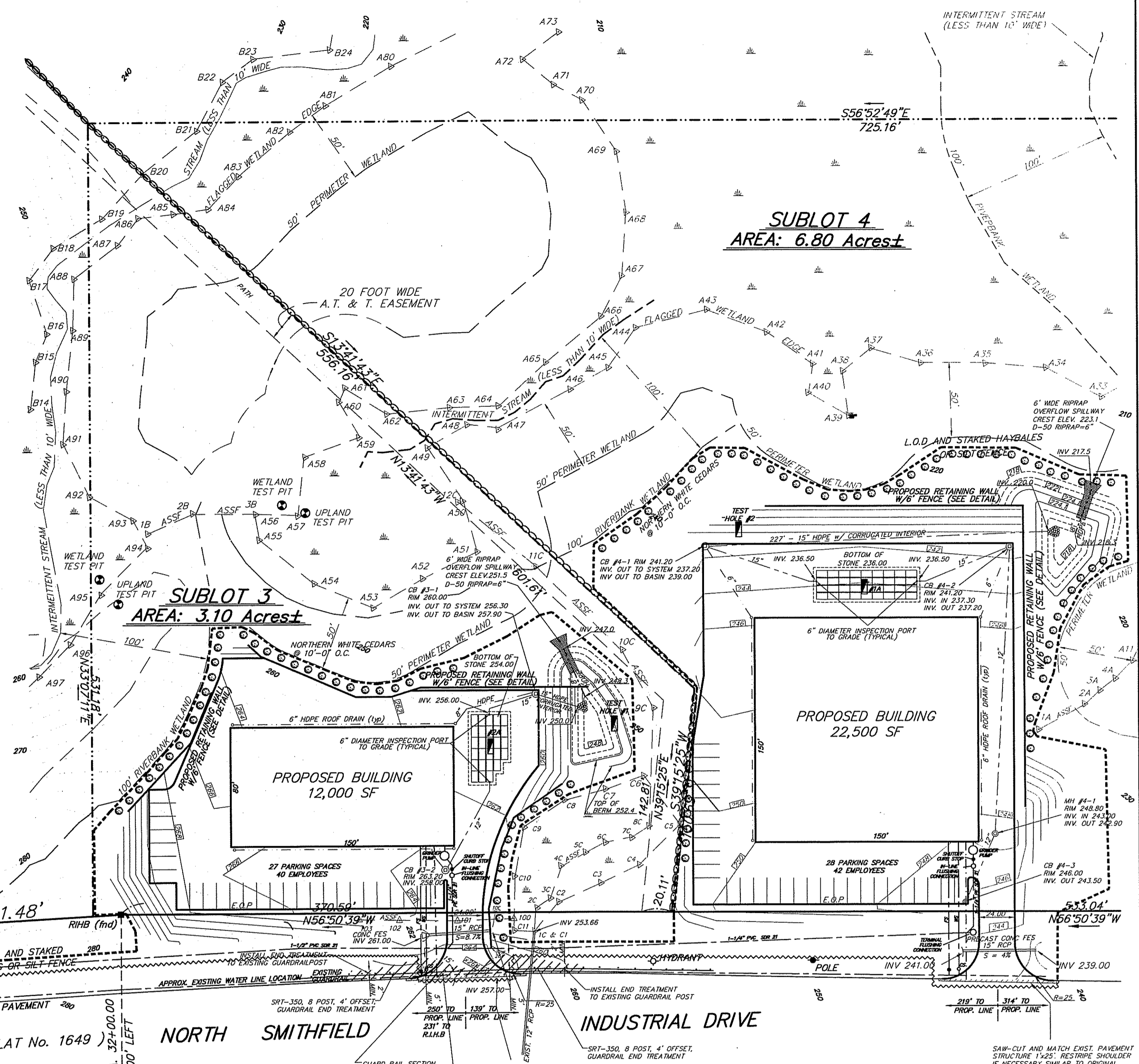
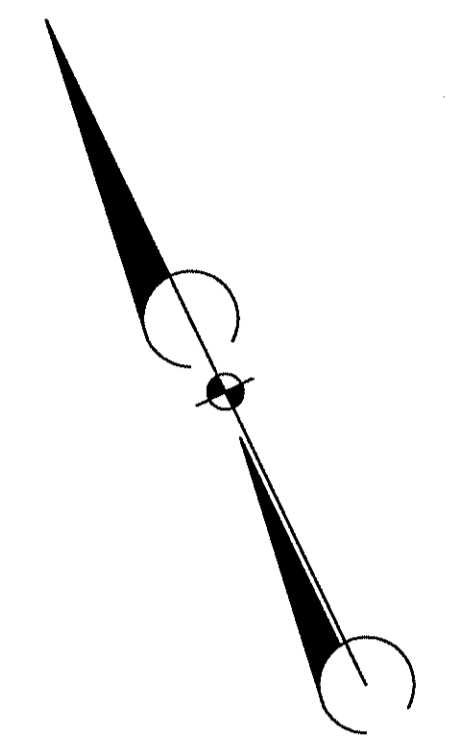
MARC N. NYBERG ASSOCIATES, INC.
LAND SURVEYORS AND PLANNERS
501 GREAT ROAD, UNIT 104
NORTH SMITHFIELD, RHODE ISLAND 02896
TEL. (401) 762-2870 FAX. (401) 762-2871

TEST HOLE DATA
DATE: 6/10/08

- TH1**
0'-3" Ap. SIL, 10YR 3/3
3'-12" Bw. SL, 10YR 4/6
12'-46" Bc. G, SL, 2.5YR 5/6
46'-120" C, ST, CB, G, LS, 2.5YR 6/3
NO LEDGE AT 120"
ESHW: 96"
- TH2**
0'-3" Ap. SIL, 10YR 3/3
3'-18" Bw. SL, 10YR 4/6
18'-36" Bc. G, SL, 2.5YR 5/6
36'-72" C, ST, CB, G, SL, 2.5YR 5/3
72'-120" C2, ST, CB, G, LS, 2.5YR 6/3
NO LEDGE AT 120"
ESHW: 48"
- DATE: 4/3/07
- TH1A**
0'-9" Ap. SIL, 10YR 3/4
9'-30" Bw. SL, 10YR 5/6
30'-120" C, ST, CB, G, LS, 2.5YR 5/3
NO LEDGE AT 120"
ESHW: 60"
- TH2A**
0'-9" Ap. SIL, 10YR 3/4
9'-44" Bw. SL, 2.5YR 5/4
44'-120" C, ST, CB, G, LS, 2.5YR 5/3
NO LEDGE AT 120"
ESHW: 76"

NOTES:

- "ALL WORK WITHIN THE STATE'S RIGHT OF WAY WILL CONFORM TO THE RIDOT'S STANDARD SPECIFICATIONS FOR ROAD AND BRIDGE CONSTRUCTION, 2004 EDITION INCLUDING ALL REVISION AND STANDARD DETAILS, JUNE 15, 1998, AS AMENDED BY REVISIONS."
- TRAFFIC CONTROL MEASURES DURING CONSTRUCTION TO BE IN ACCORDANCE WITH THE M.U.T.C.D. 2003 (MANUAL OF UNIFORM TRAFFIC CONTROL DEVICES)
- RIDOT UTILITY PERMIT WILL NEED TO BE OBTAINED FOR INSTALLATION OF SEWER AND WATER SERVICES WITHIN HIGHWAY R.O.W AREA.
- INSTALLATION AND MATERIAL SHALL CONFORM TO NORTH SMITHFIELD SEWER STANDARDS.



BENCH MARK 1
TOP HYDRANT
ELEV 306.46
NGVD 1929

BENCH MARK 2
TOP HYDRANT
ELEV 291.42
NGVD 1929

LEGEND

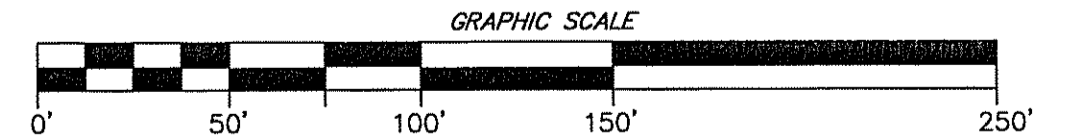
- WETLAND AREA
- WETLAND FLAG
- EXIST. CONTOUR LINE
- FIRE HYDRANT
- WATER GATE
- STONE WALL
- GUARD RAIL
- EXISTING PROPERTY LINE
- PROPOSED PROPERTY LINE
- WETLAND/UPLAND TEST PITS
- SOIL EVALUATION
- STREAM
- RHODE ISLAND HIGHWAY BOUND FOUND
- SEWER LINE
- WATER LINE
- DRAIN LINE
- GAS LINE
- PROPOSED UTILITY POLE
- LIMIT OF DISTURBANCE
- STAKED HAYBALES OR SILT FENCE
- NORTHERN WHITE CEDARS
@ 10'-0" O.C.

DEPARTMENT OF ENVIRONMENTAL MANAGEMENT
OFFICE OF WATER RESOURCES
FRESHWATER WETLANDS PROGRAM
APPROVED WITH CONDITIONS
AS SPECIFIED IN THE LETTER OF APPROVAL
DATED JAN 21 2009 FILE # 07-0347
NO CHANGES ALLOWED WITHOUT PRIOR APPROVAL.
APPROVED PLANS MUST BE AT CONSTRUCTION SITE.

PAUL J. GADOURY
NO. 3637
REGISTERED PROFESSIONAL ENGINEER
PROPOSED DRAINAGE AND UTILITIES
BY: PAUL J. GADOURY, P.E.
1 SOUTHURDY ROAD
CUMBERLAND, RHODE ISLAND 02864

Kindly be advised that this Permit is not equivalent to a verification of the type or extent of freshwater wetlands on site.

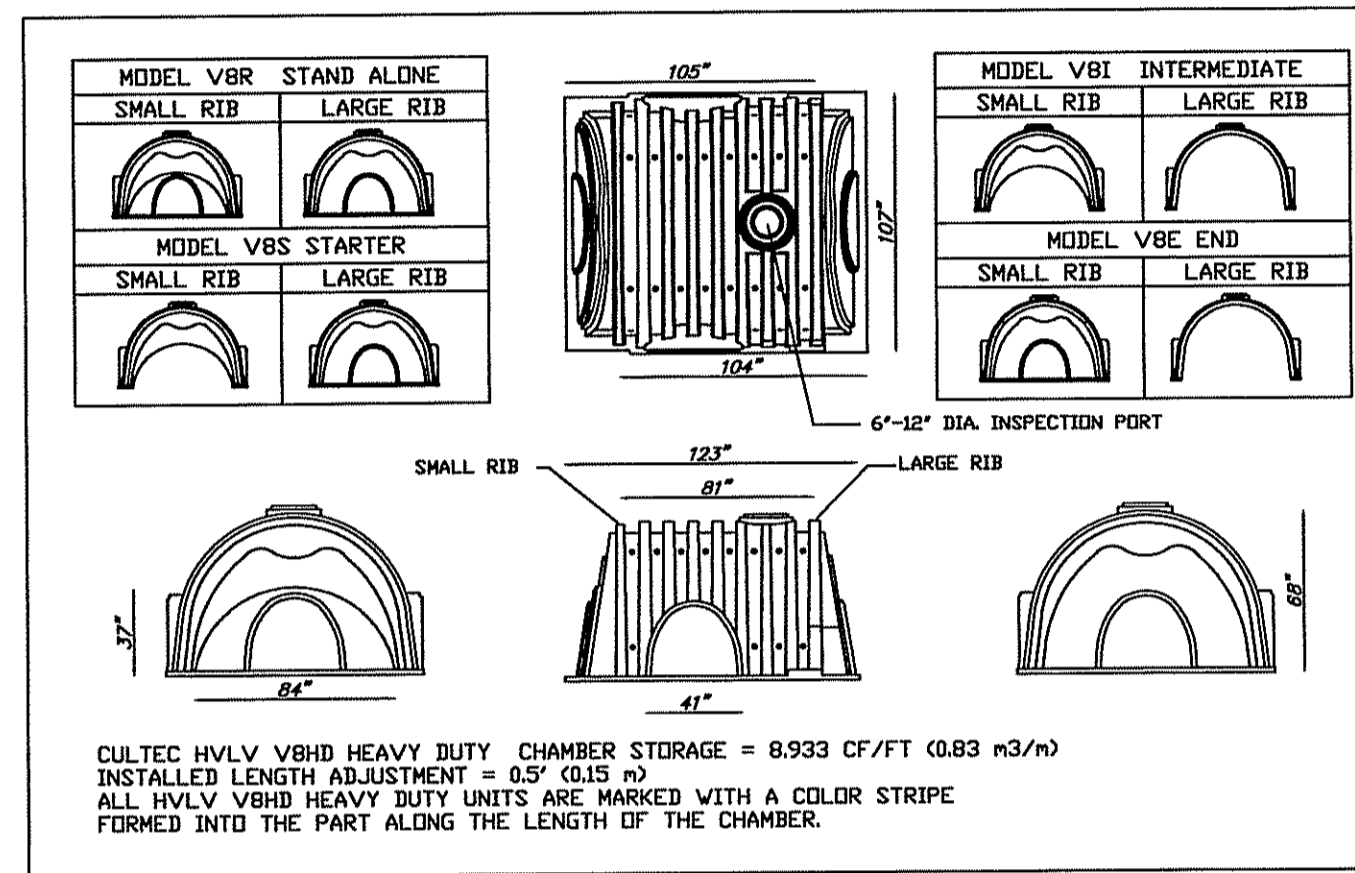
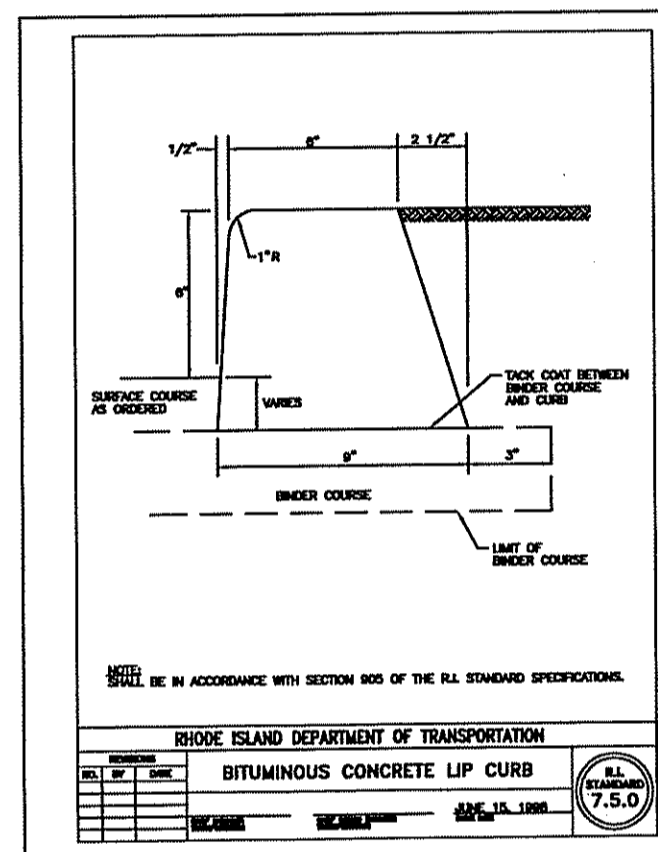
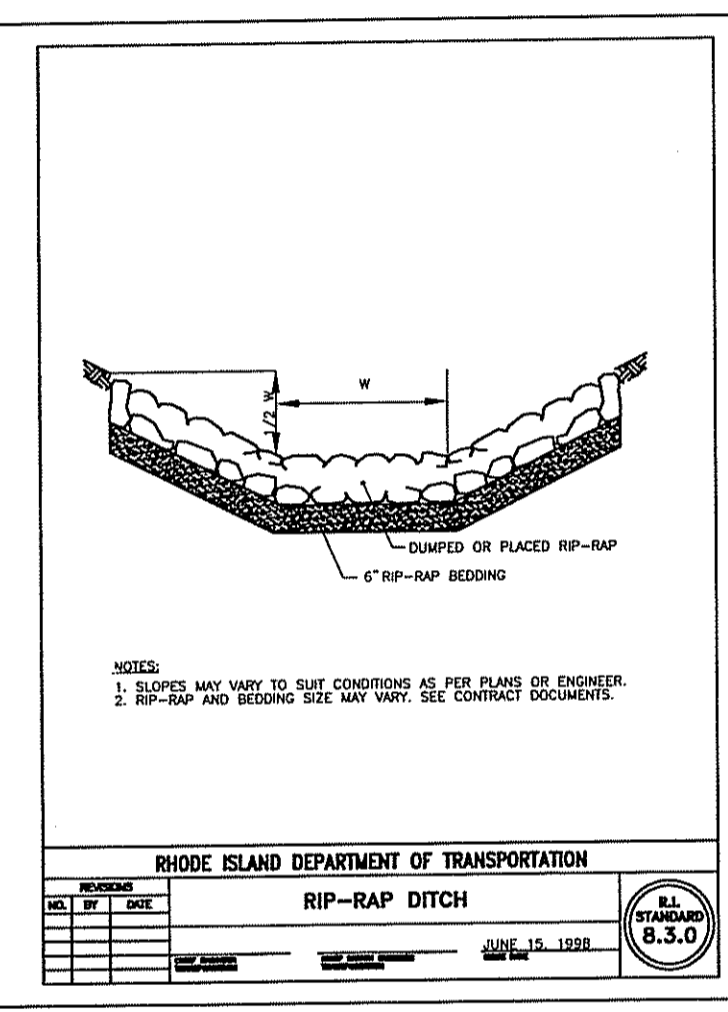
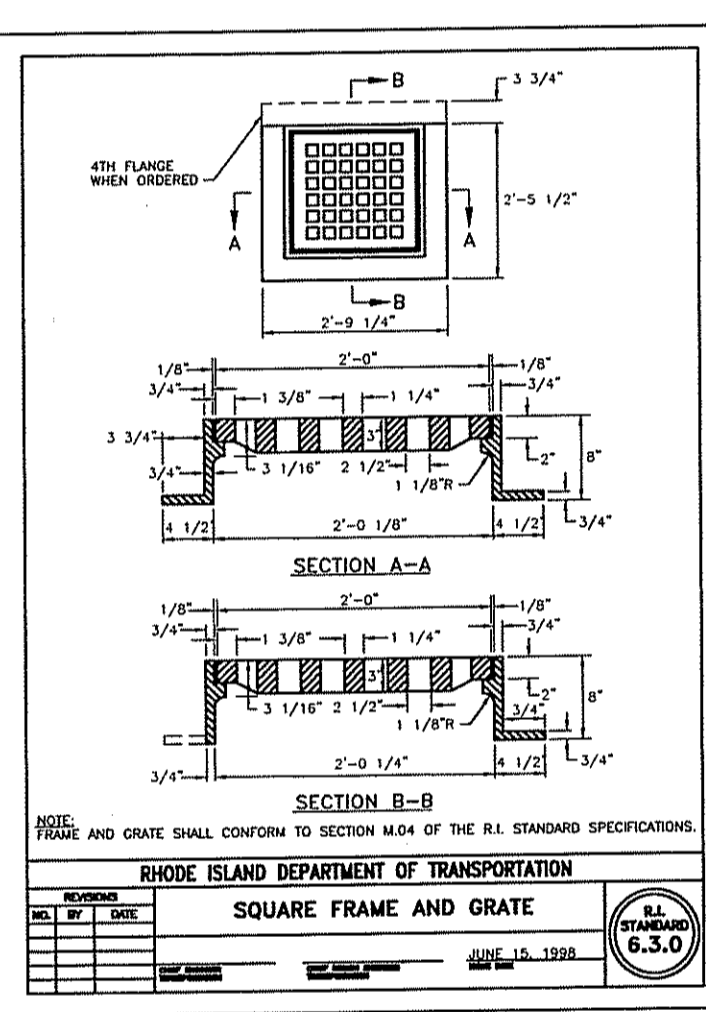
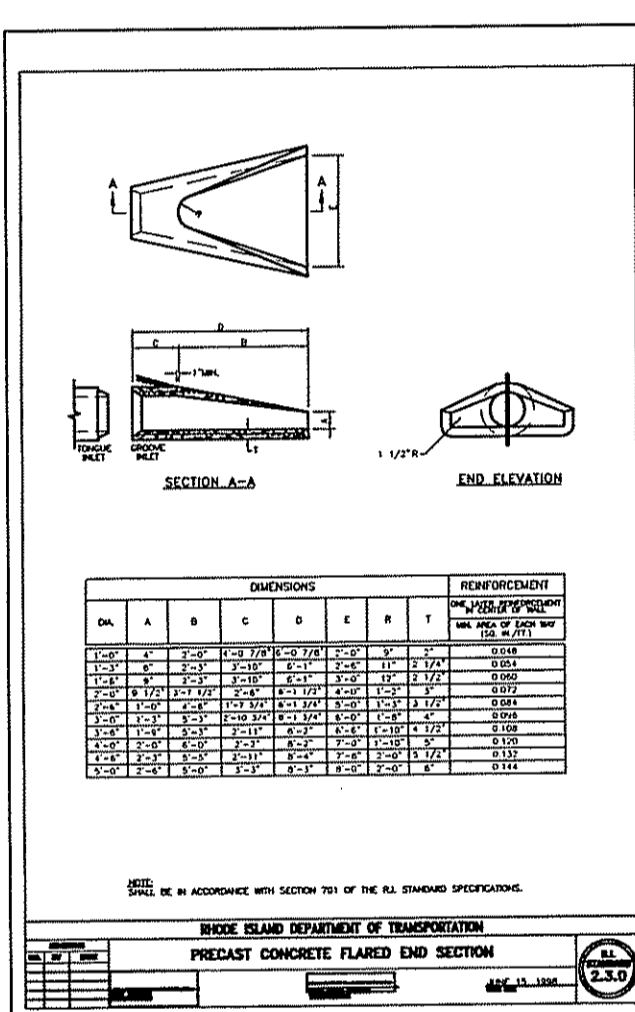
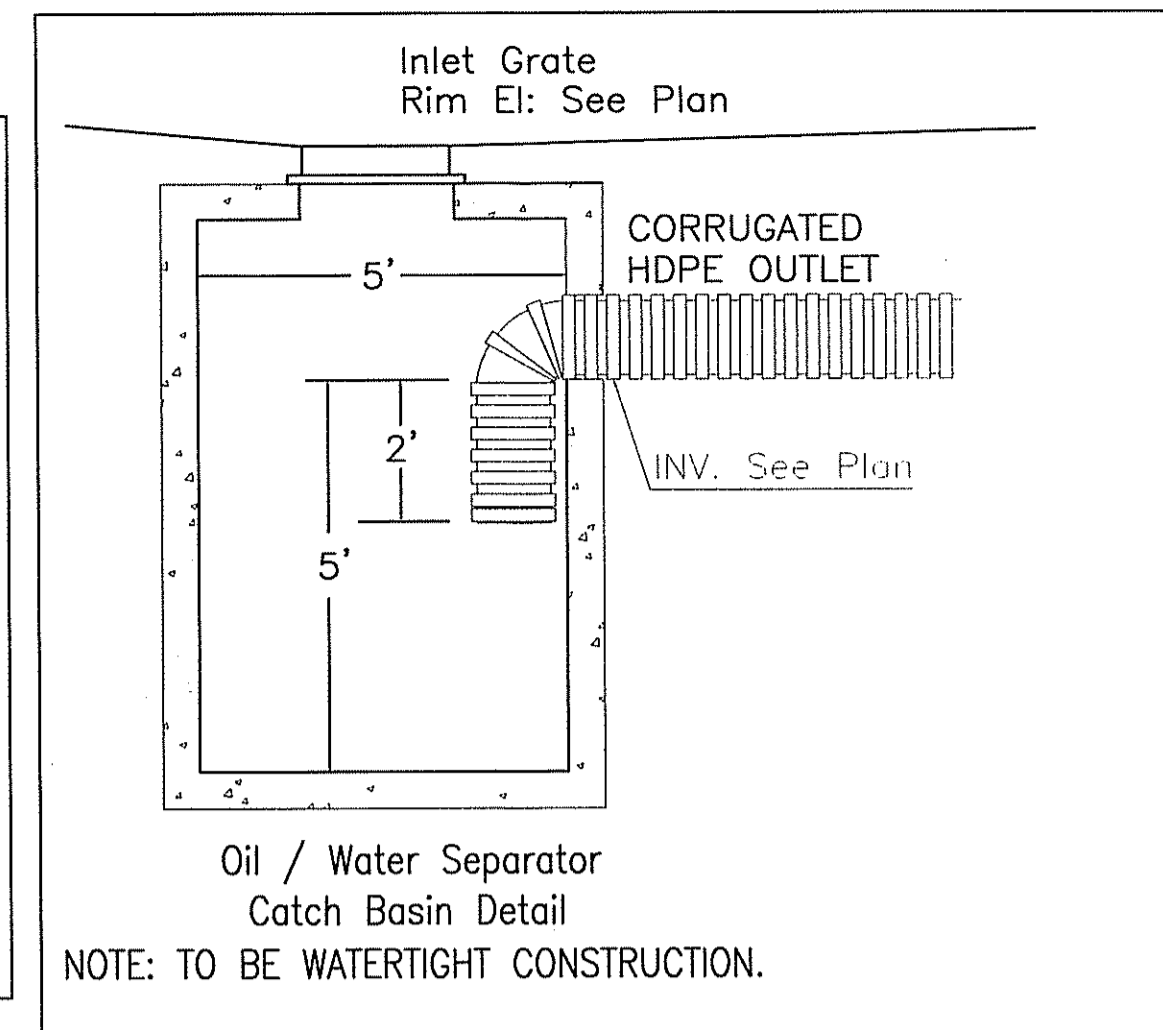
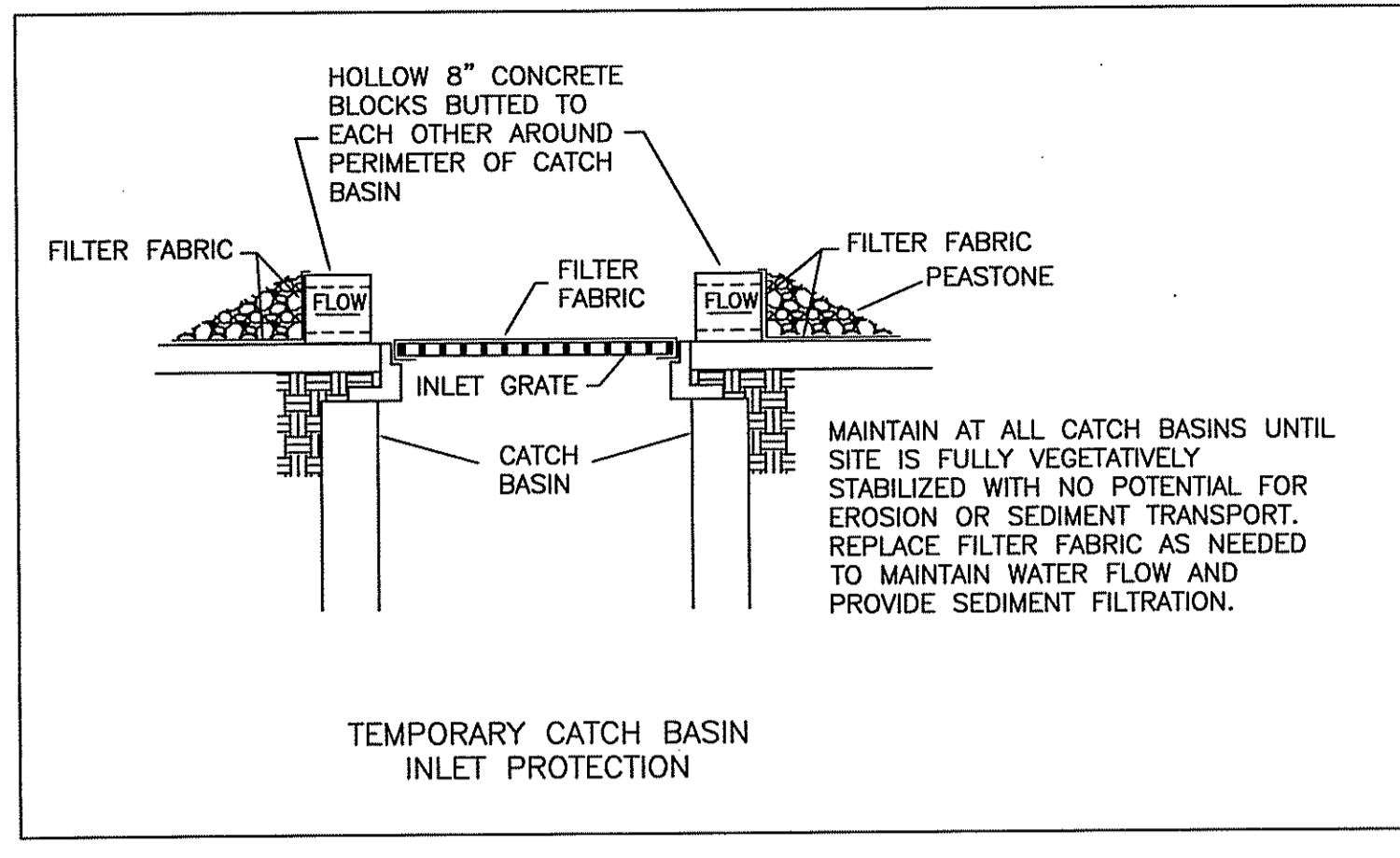
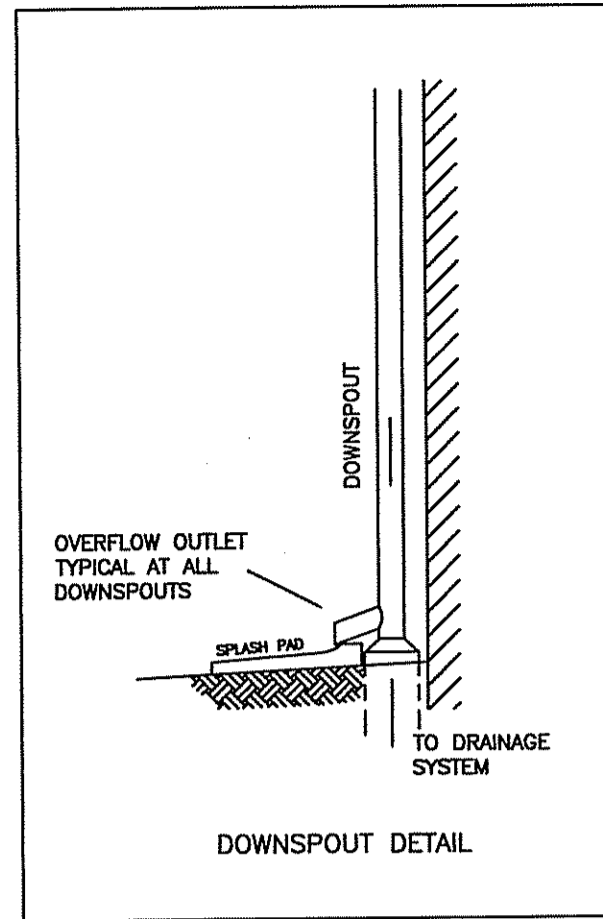
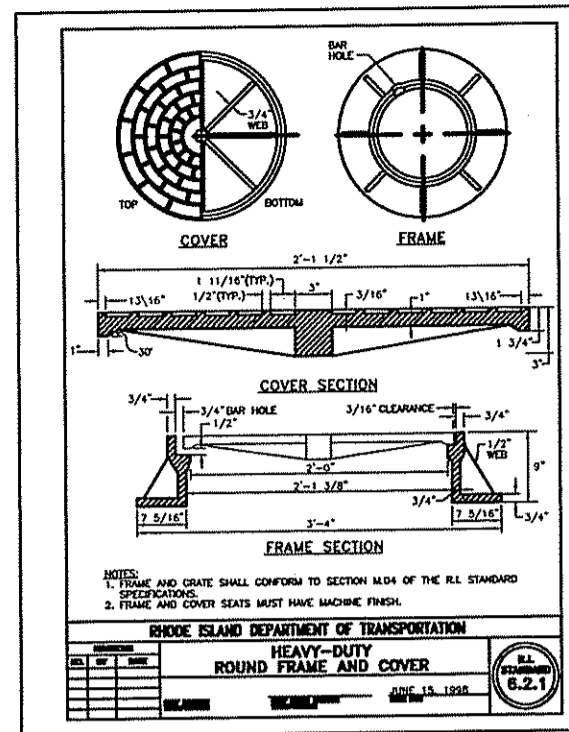
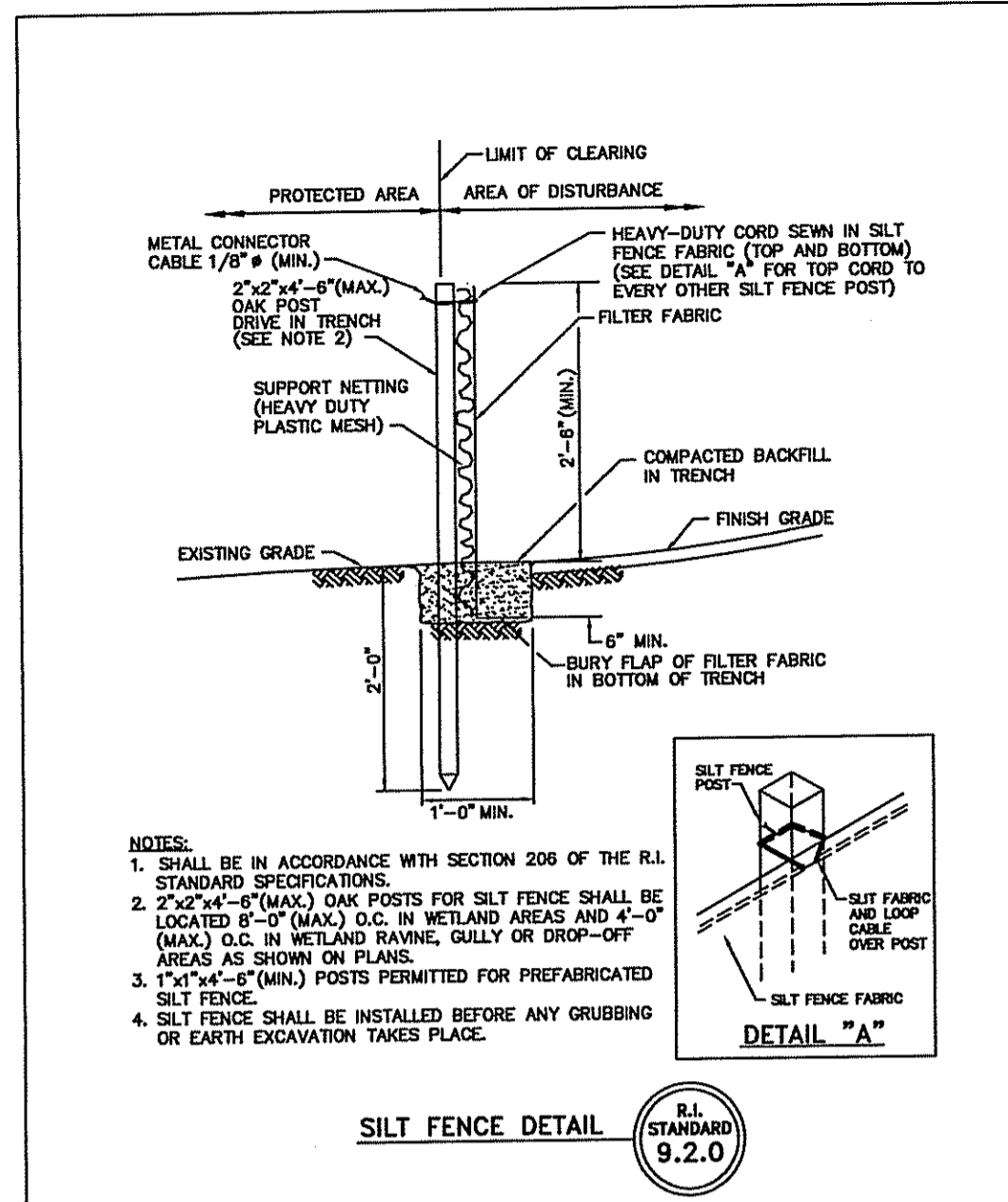
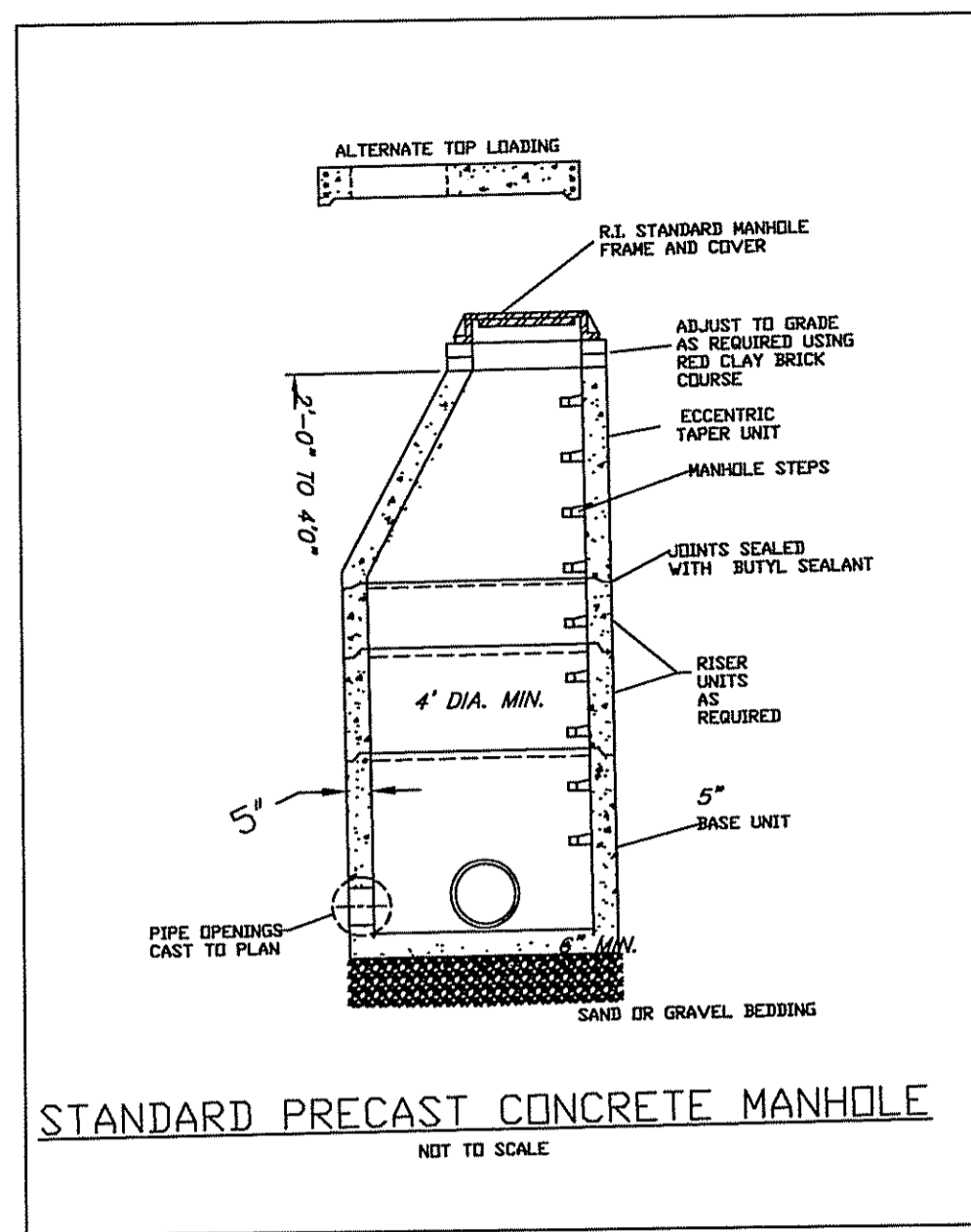
SOIL EROSION CONTROL PLAN
FOR
INDUSTRIAL DRIVE
COMMERCE PARK
PLAT 5, LOT 76
NORTH SMITHFIELD, RHODE ISLAND
DATE: APRIL, 2007
SCALE: 1 INCH EQUALS 50 FEET



SHEET 2 OF 3 SHEETS
REVISED: 8/3/07, 2/21/08, 6/2/08, 8/5/08, 12/8/08

MARC N. NYBERG
NO. 1797
REGISTERED LAND SURVEYOR

Marc N. Nyberg Associates, Inc.
Land Surveyors
Planners
GPS
MARC N. NYBERG ASSOCIATES, INC.
LAND SURVEYORS AND PLANNERS
501 GREAT ROAD, UNIT 104
NORTH SMITHFIELD, RHODE ISLAND 02896
TEL. (401) 762-2870 FAX. (401) 762-2871

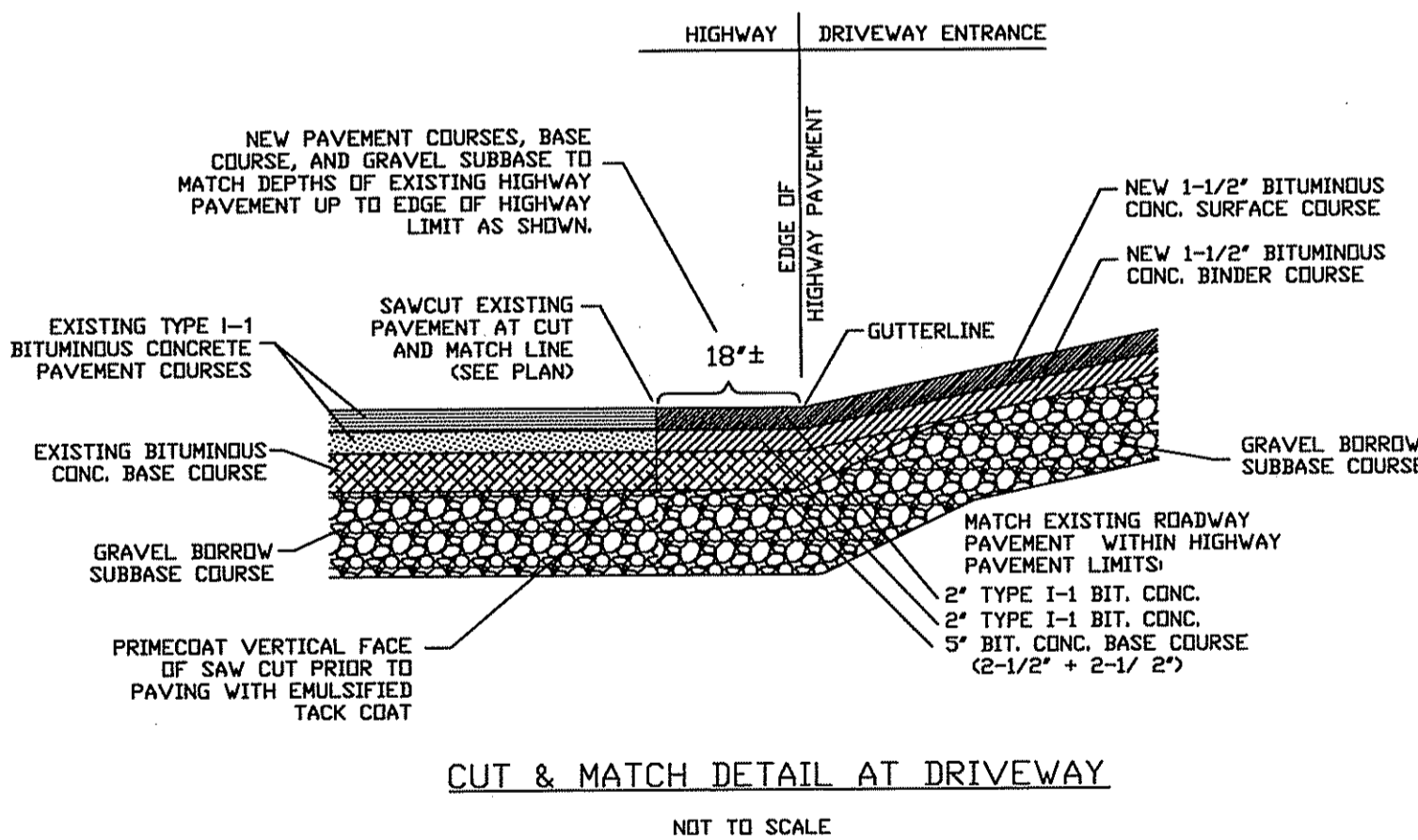
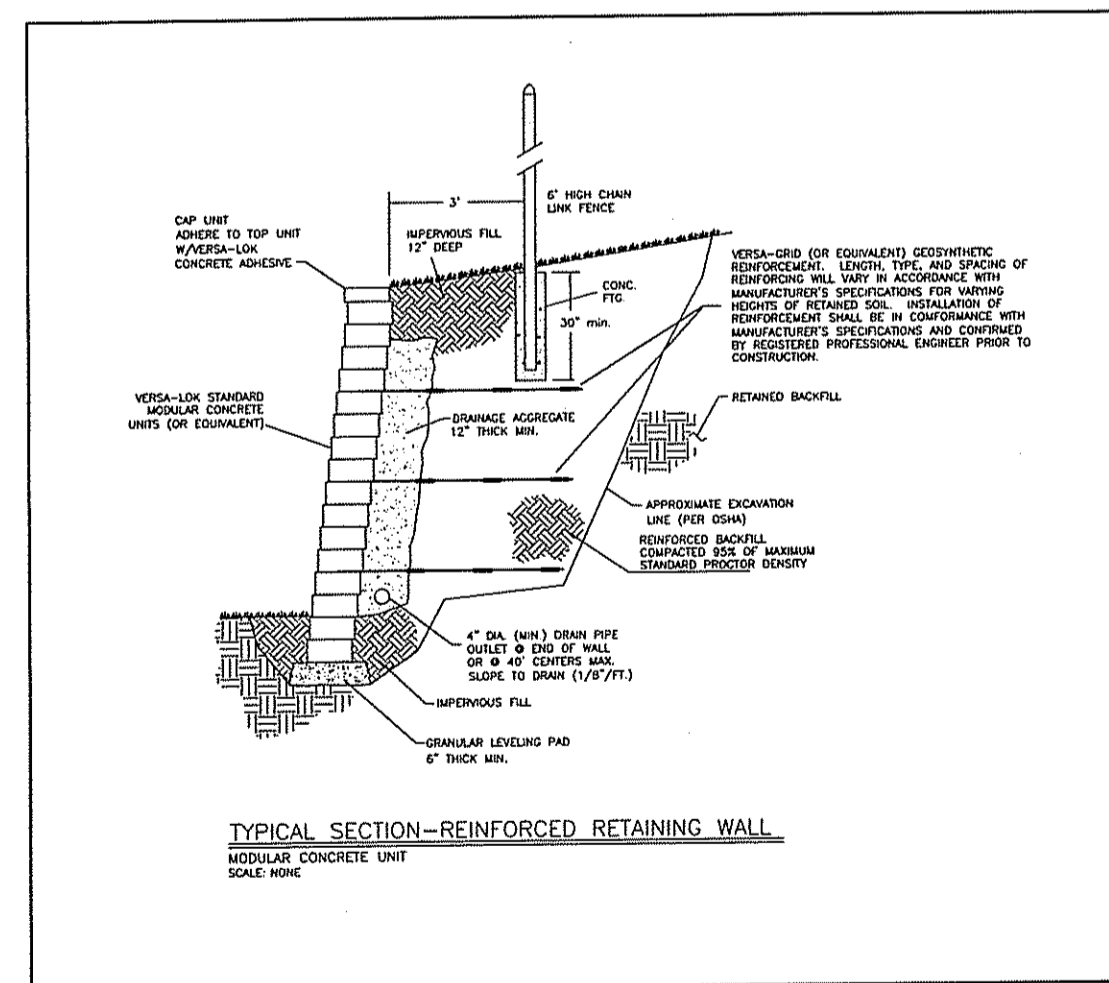
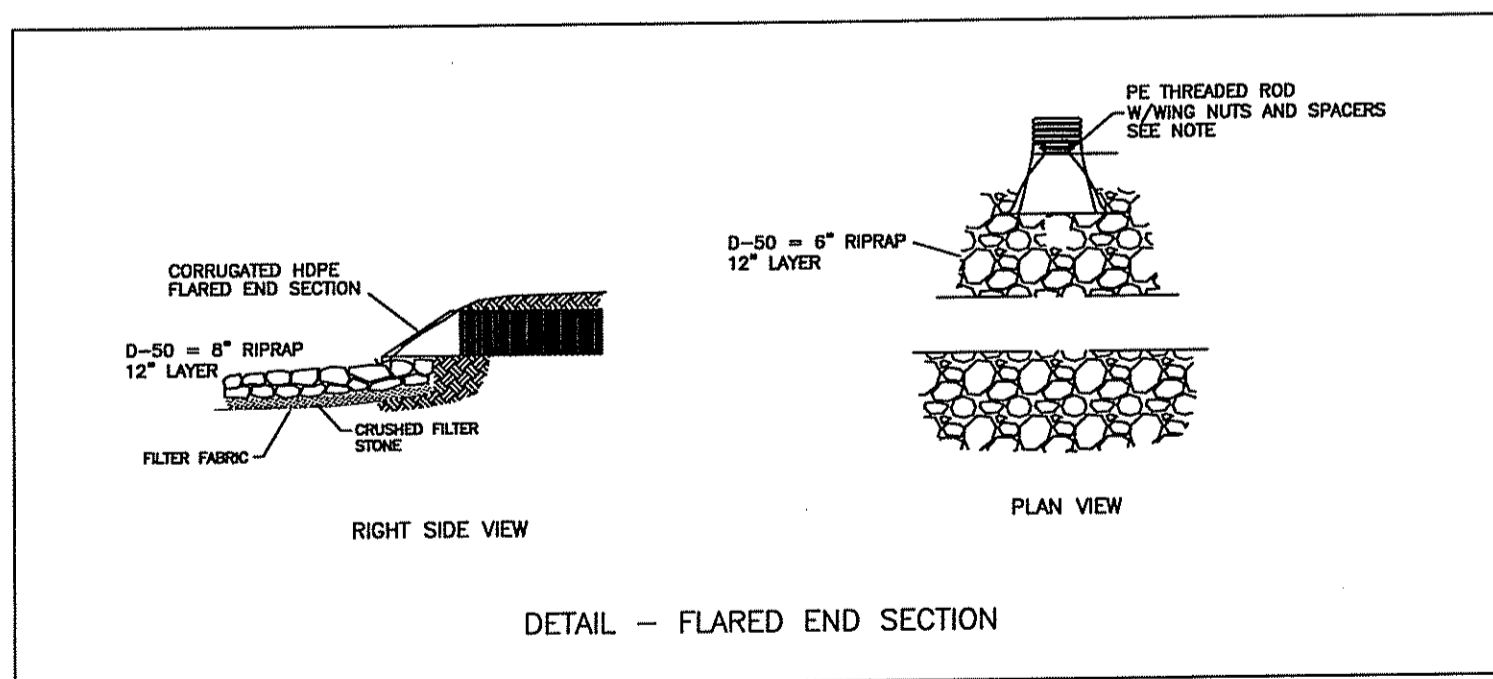


Long Term Maintenance Plan of Stormwater System

Owner of the property is responsible for conducting continual long term maintenance of the on-site drainage system. Frequent and thorough cleaning of catch basins is critical for maintaining infiltration system performance. Ongoing program of regular inspections and cleaning shall be maintained. Sediment removal is to be performed on a frequent basis to maintain ample sump storage capacity to promote solids settling and minimize potential for solids resuspension.

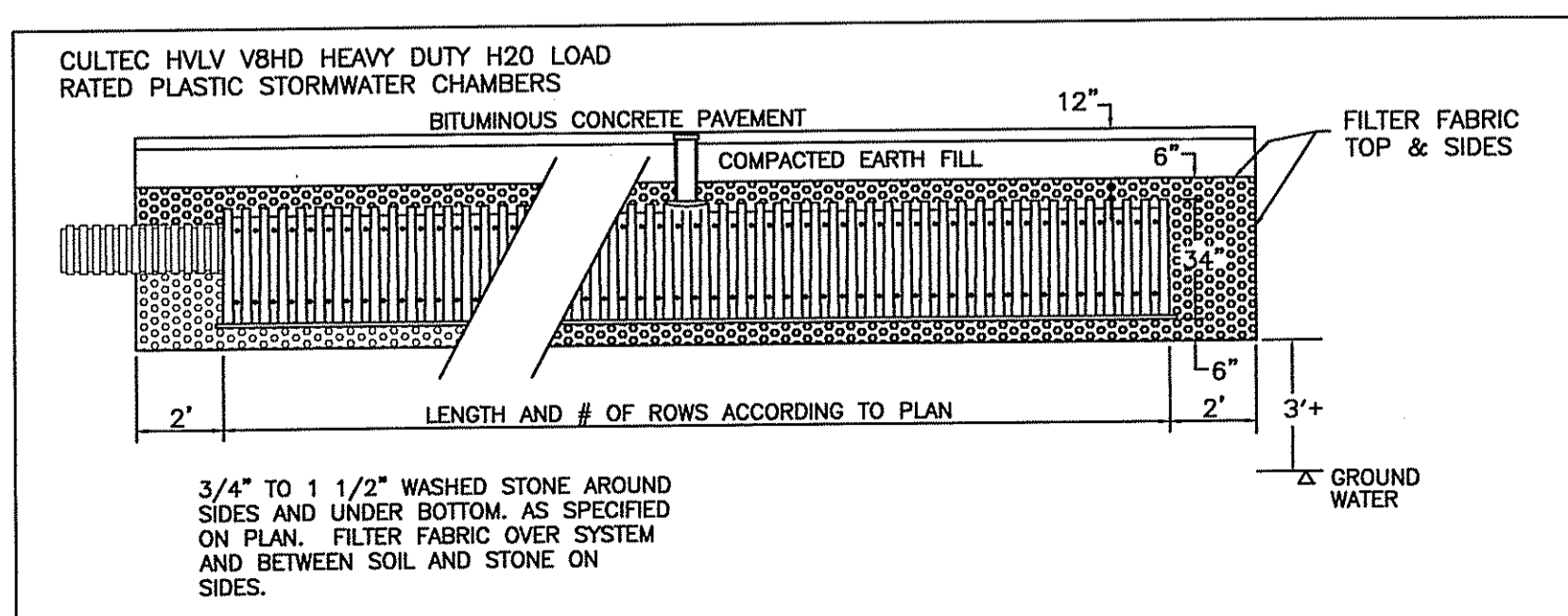
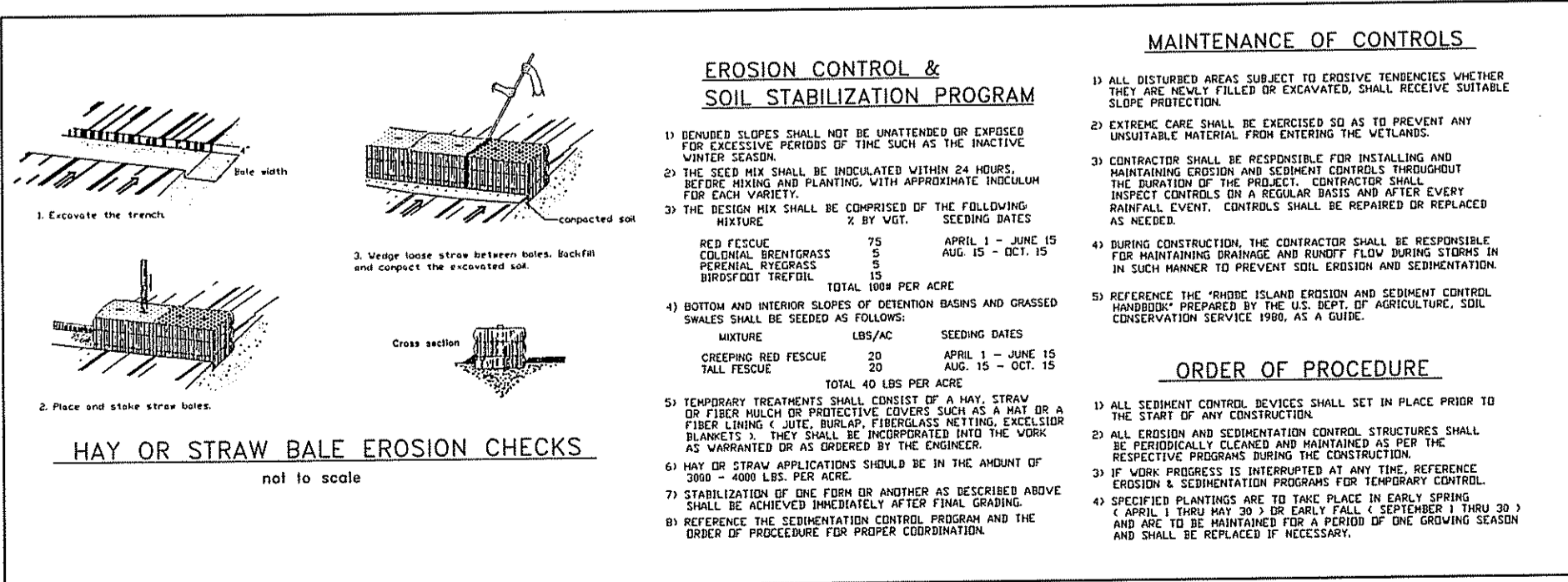
1. Conduct inspections initially on once per month basis. Remove sediment so as to not allow sediment accumulation depth in basin to exceed 1 foot.
2. Increase or reduce frequency of inspection and cleaning as required to allow no more than 1 foot sediment accumulation, but in no case shall inspections be conducted less frequently than quarterly.
3. Clean out sediment, oil and grease, and floatables using catch basin cleaning equipment (vacuum pumps). Manual removal of pollutants may be necessary.
4. Properly dispose of oils, solids, sediments and disposables.
5. In the event of any activities with potential for sediment transport, immediately install catch basin filter protection in accordance with detail on plan. In the event of any sedimentation occurrence, immediately remove accumulated sediment from affected catch basins and install protective filters as necessary.
6. Monitor performance of infiltration systems on quarterly basis by recording water levels in monitoring pipes following storm events. Particularly monitor systems following extreme rainfall events.
7. The owner/Manager of the project shall be responsible for submitting an annual report to the town, in format, as shall be required and approved by the town, documenting and certifying that the drainage system has been maintained in accordance with the requirements as set forth on the approved plans for the project.

IMPORTANT!!!
INFILTRATION SYSTEMS SHALL NOT BE PUT INTO OPERATION UNTIL THE SITE HAS BEEN FULLY STABILIZED VEGETATIVELY AND THERE IS NO POTENTIAL FOR ANY SEDIMENT TRANSPORT TO THE CATCH BASINS.



DETAIL SHEET FOR INDUSTRIAL DRIVE COMMERCE PARK PLAT 5, LOT 76 NORTH SMITHFIELD, RHODE ISLAND SHEET 3 OF 4 SHEETS

NOT TO SCALE
JUNE 18, 2007
REVISED: 8/3/07, 6/2/08, 6/13/08, 6/12/08, 12/8/08



DEPARTMENT OF ENVIRONMENTAL MANAGEMENT
OFFICE OF WATER RESOURCES
FRESHWATER WETLANDS PROGRAM
APPROVED WITH CONDITIONS
AS SPECIFIED IN THE LETTER OF APPROVAL
DATED JAN 21 2009 FILE # 07-0317
NO CHANGES ALLOWED WITHOUT PRIOR APPROVAL
APPROVED PLANS MUST BE AT CONSTRUCTION SITE

PAUL J. GADOURY
REGISTERED PROFESSIONAL ENGINEER
NO. 3637

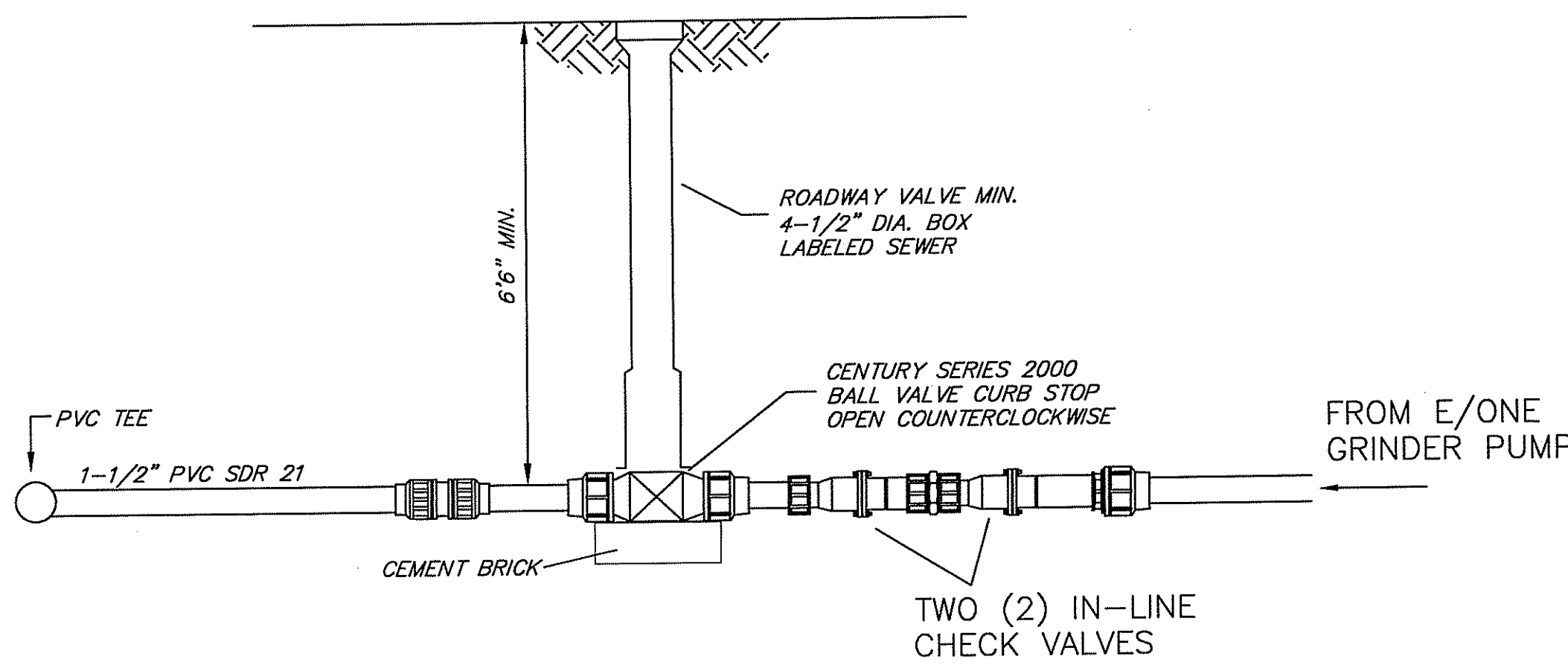
MARC N. NYBERG
REGISTERED LAND SURVEYOR
NO. 1797

PROPOSED DRAINAGE AND UTILITIES
BY: PAUL J. GADOURY, P.E.
PROFESSIONAL ENGINEER
1 SOUTHURBY ROAD
CUMBERLAND, RHODE ISLAND 02864

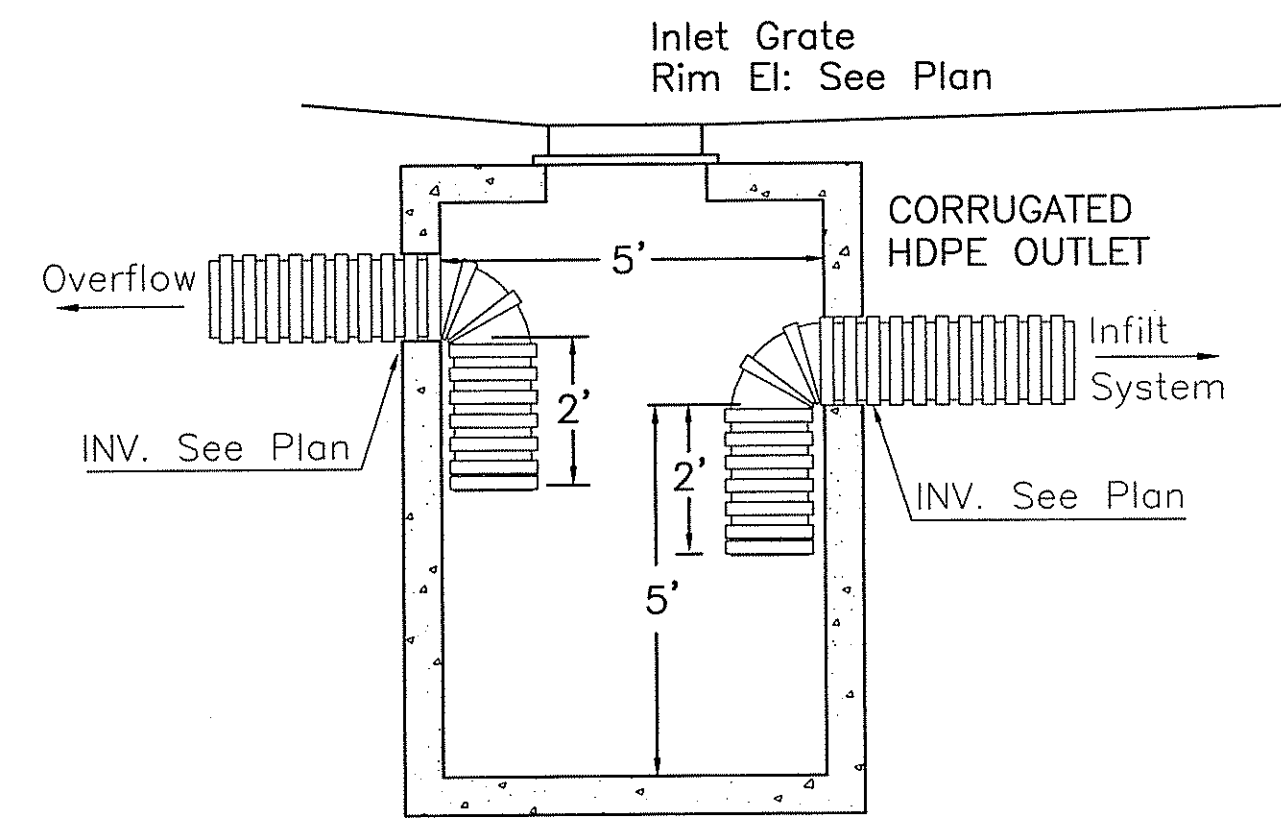
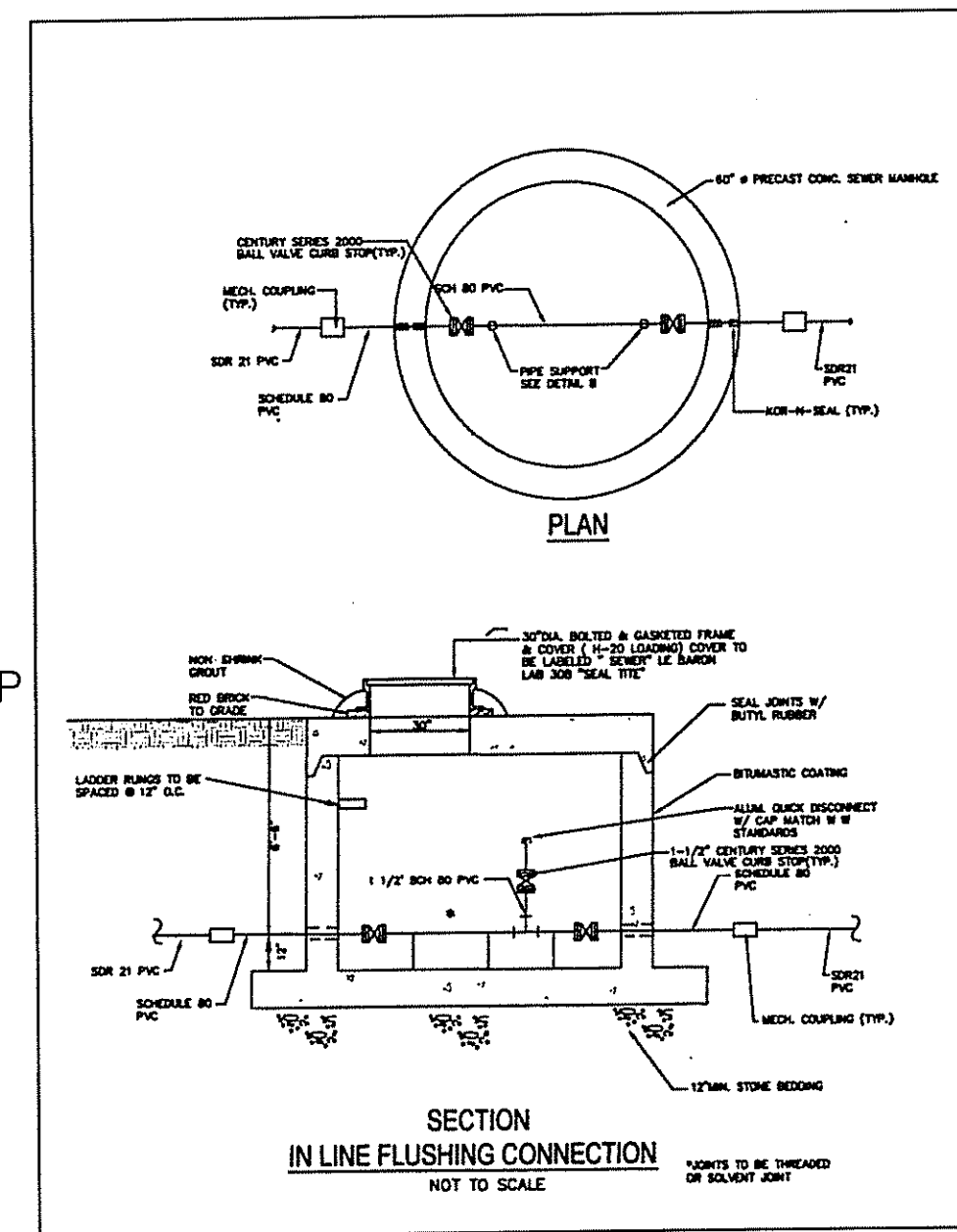
Kindly be advised that this Permit is not equivalent to a verification of the type or extent of freshwater wetlands on site.

Marc N. Nyberg Associates, Inc.
Land Surveyors
Planners
GPS

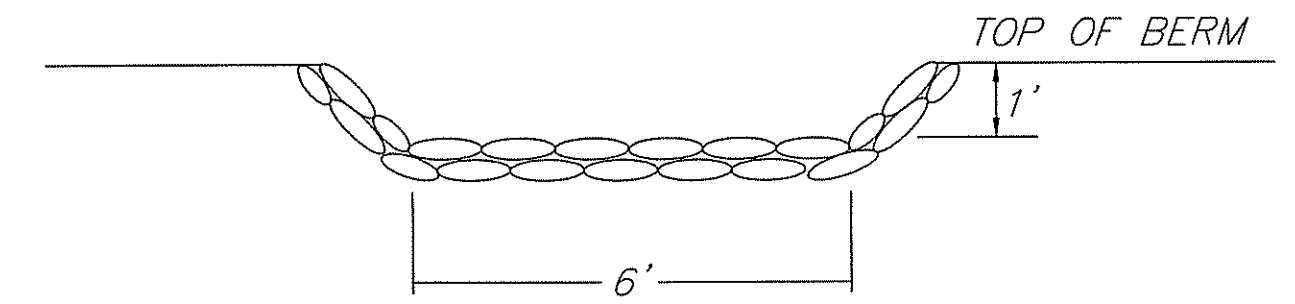
MARC N. NYBERG ASSOCIATES, INC.
LAND SURVEYORS AND PLANNERS
501 GREAT ROAD, UNIT 104
NORTH SMITHFIELD, RHODE ISLAND 02896
TEL. (401) 762-2870 FAX. (401) 762-2871



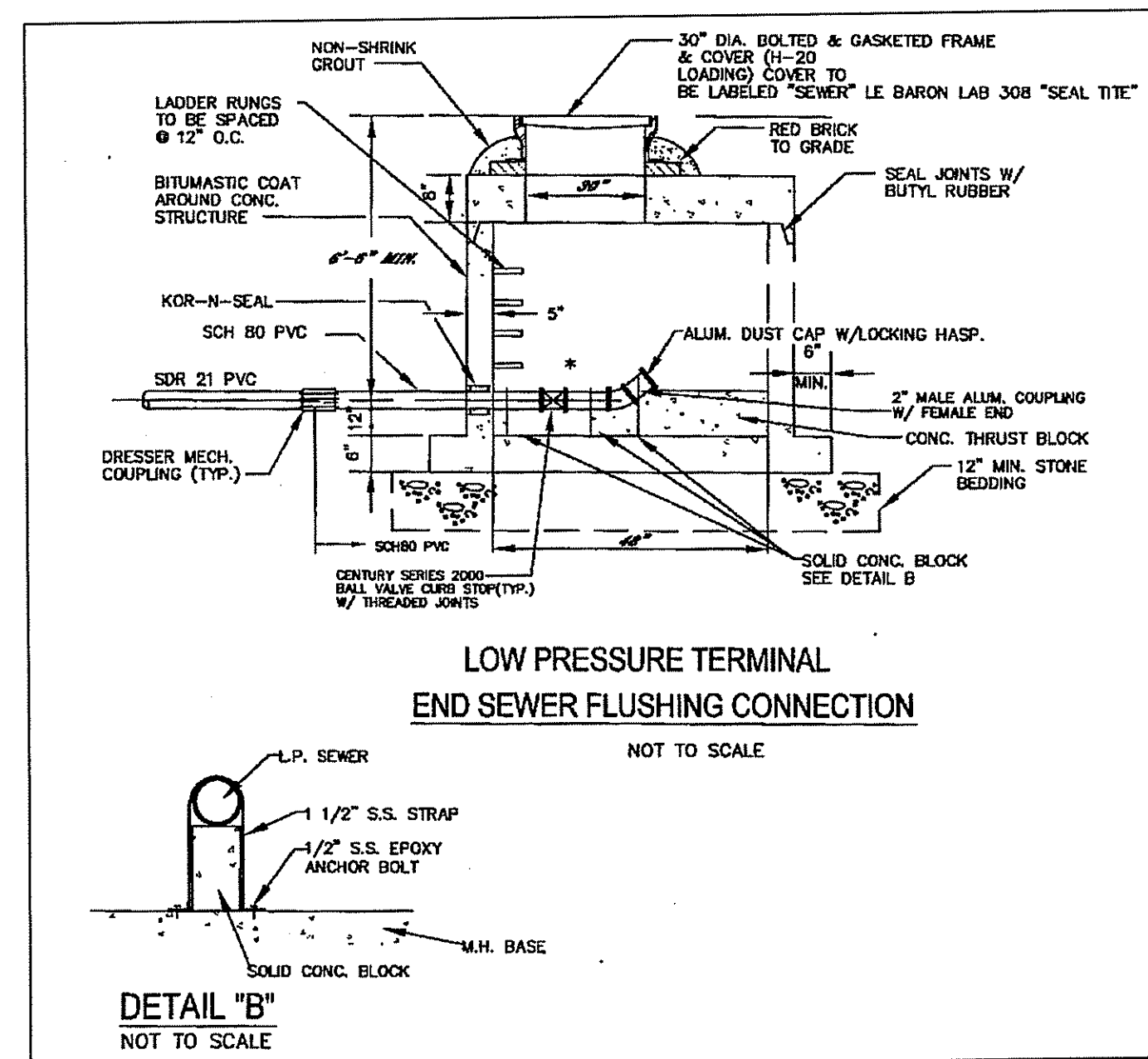
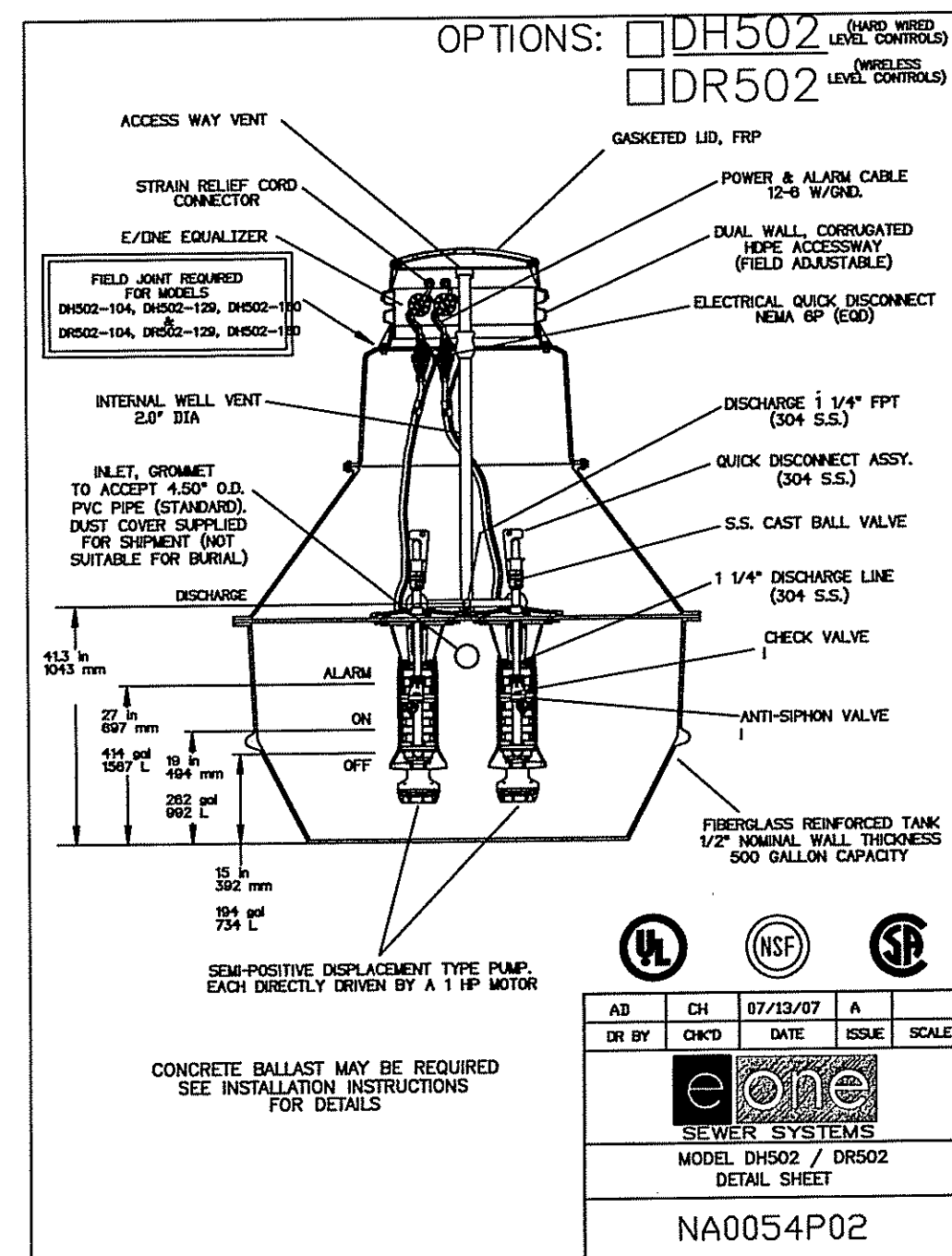
LOW PRESSURE SEWER SERVICE CONNECTION
NOT TO SCALE



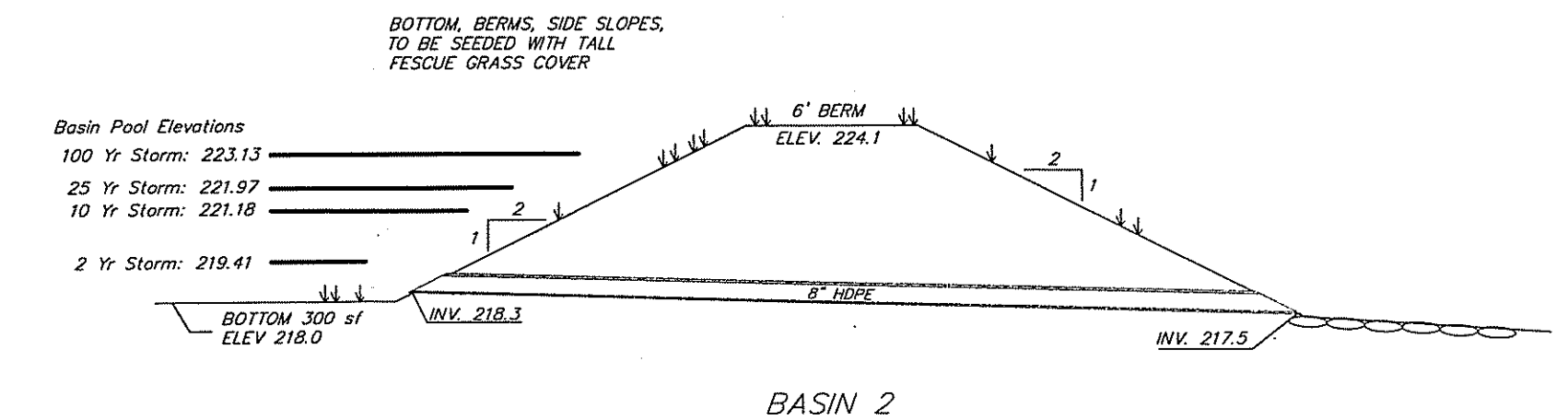
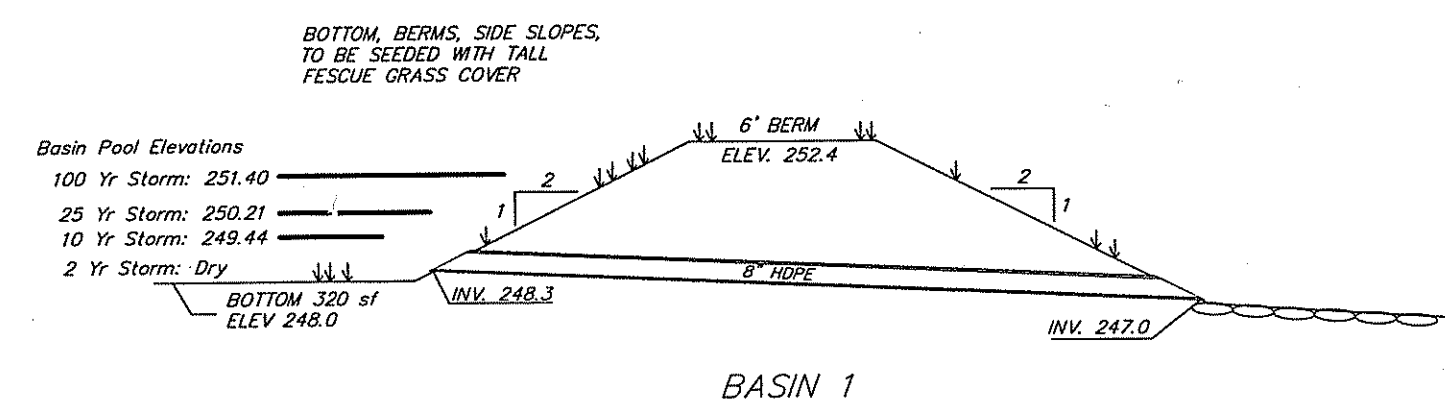
CB's #3-1 & #3-2
Overflow Catch Basin Detail
Oil / Water Separator
NOTE: TO BE WATERTIGHT CONSTRUCTION.



BASIN SPILLWAY SECTION

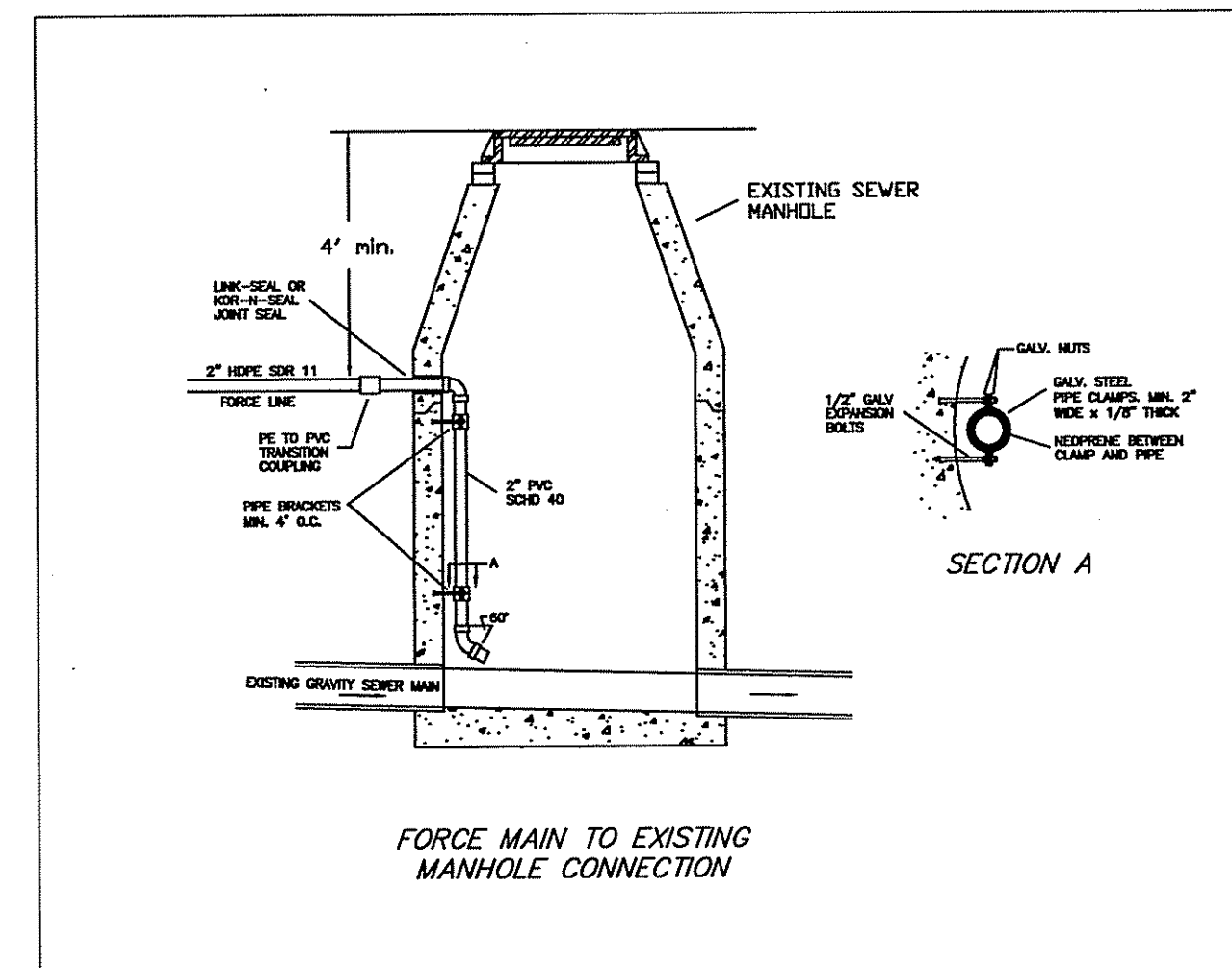
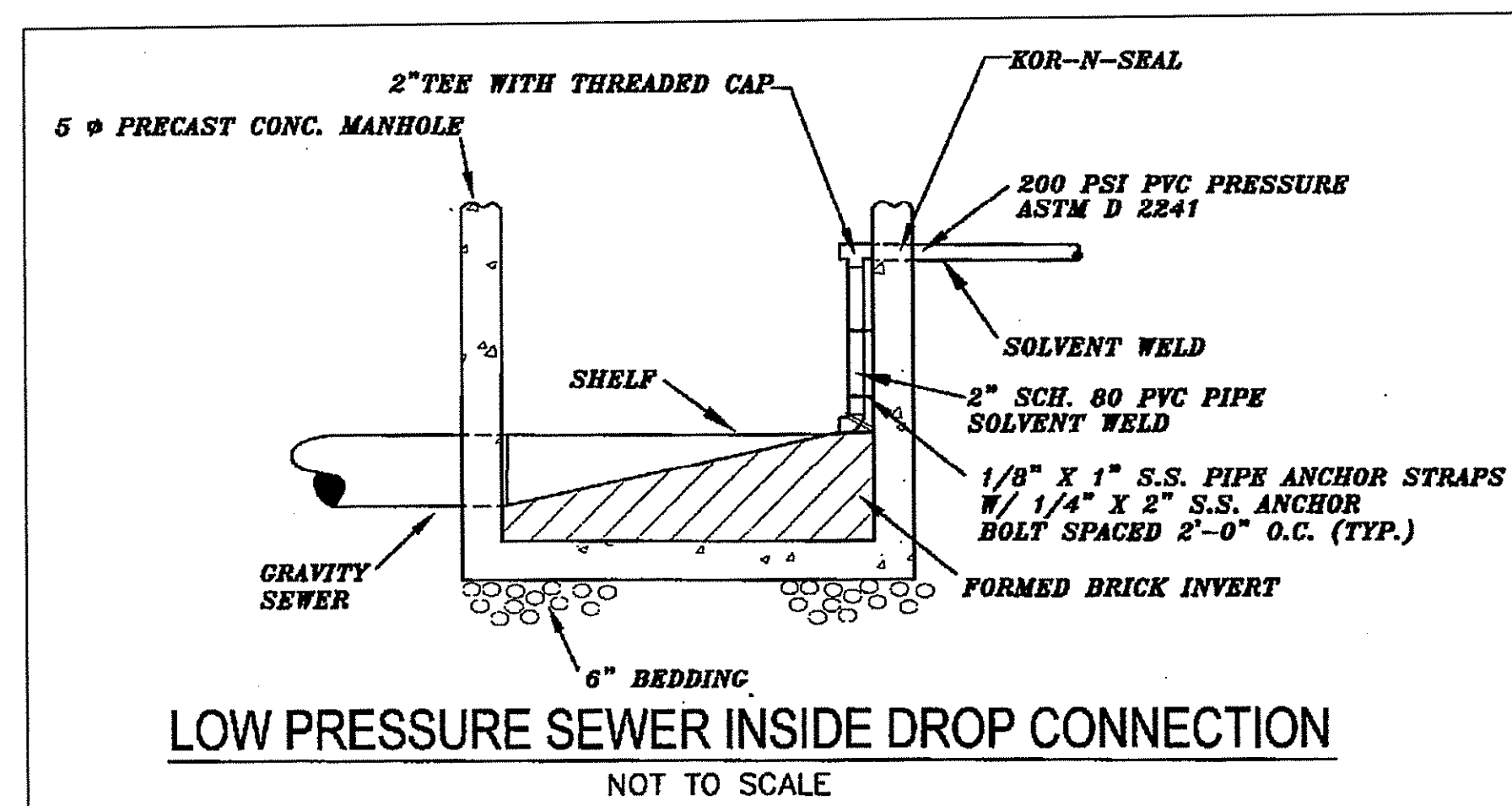
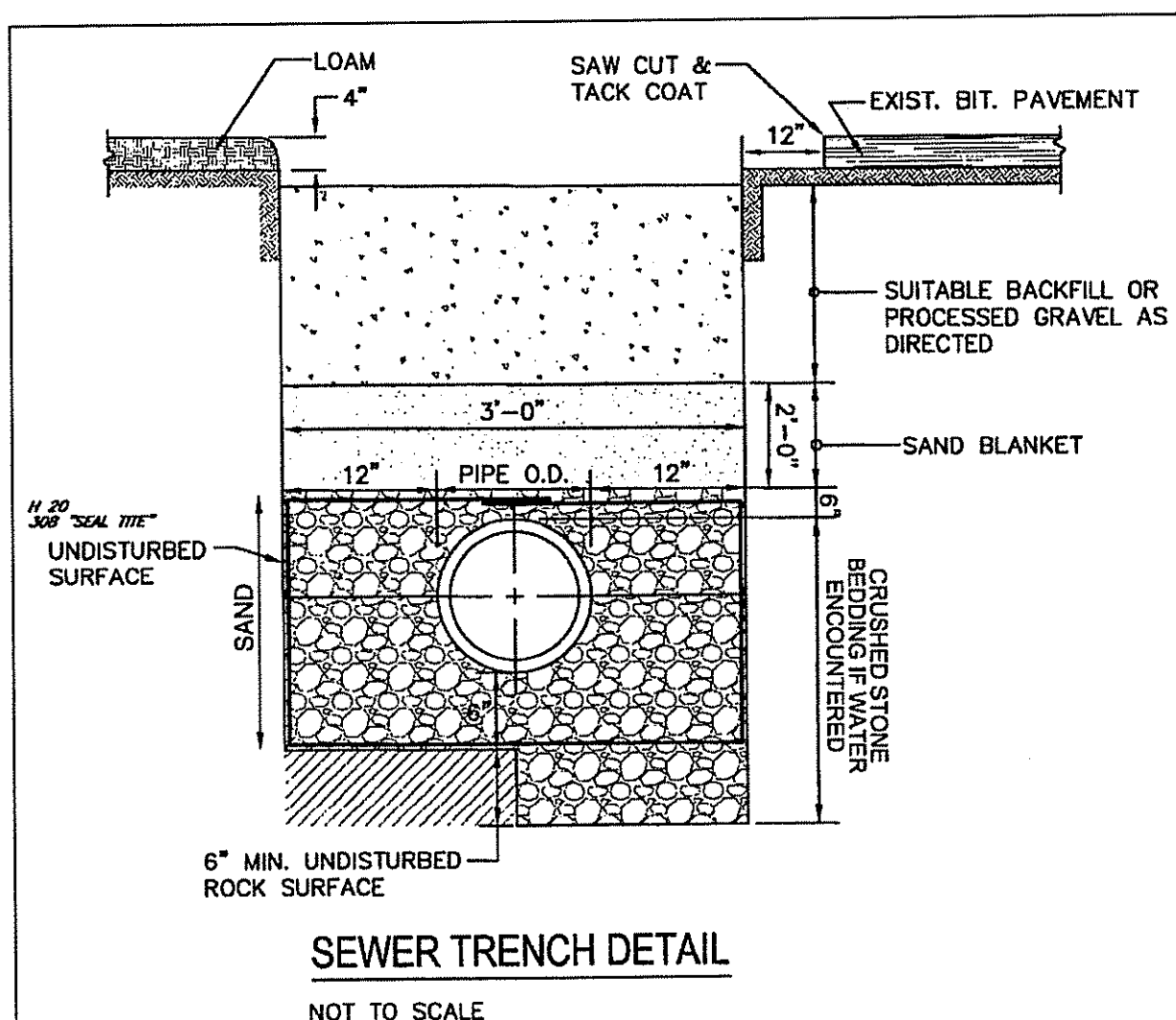


DETAIL 'B'
NOT TO SCALE



DEPARTMENT OF ENVIRONMENTAL MANAGEMENT
OFFICE OF WATER RESOURCES
FRESHWATER WETLANDS PROGRAM
APPROVED WITH CONDITIONS
AS SPECIFIED IN THE LETTER OF APPROVAL
DATED JAN 21 2009 FILE # 07-0397
NO CHANGES ALLOWED WITHOUT PRIOR APPROVAL
APPROVED PLANS MUST BE AT ALL TIMES IN ACCORDANCE WITH THE
APPROVED PLANS MUST BE AT ALL TIMES IN ACCORDANCE WITH THE

DETAIL SHEET
FOR
INDUSTRIAL DRIVE
COMMERCE PARK
PLAT 5, LOT 76
NORTH SMITHFIELD, RHODE ISLAND
SHEET 4 OF 4 SHEETS
NOT TO SCALE
AUGUST 12, 2008
REVISED 9/16/08, 12/8/08



Kindly be advised that this Permit is not equivalent to a verification of the type or extent of freshwater wetlands on site.

PAUL J. GADOURY
NO. 3637
REGISTERED PROFESSIONAL ENGINEER

PROPOSED DRAINAGE AND UTILITIES
BY: PAUL J. GADOURY, P.E.
PROFESSIONAL ENGINEER
1 SOUTHURBY ROAD
CUMBERLAND, RHODE ISLAND 02864

MARC N. NYBERG
NO. 1797
REGISTERED PROFESSIONAL LAND SURVEYOR

Marc N. Nyberg Associates, Inc.
Land Surveyors
Planners
GIS

MARC N. NYBERG ASSOCIATES, INC.
LAND SURVEYORS AND PLANNERS
501 GREAT ROAD, UNIT 104
NORTH SMITHFIELD, RHODE ISLAND 02896
TEL. (401) 762-2870 FAX. (401) 762-2871