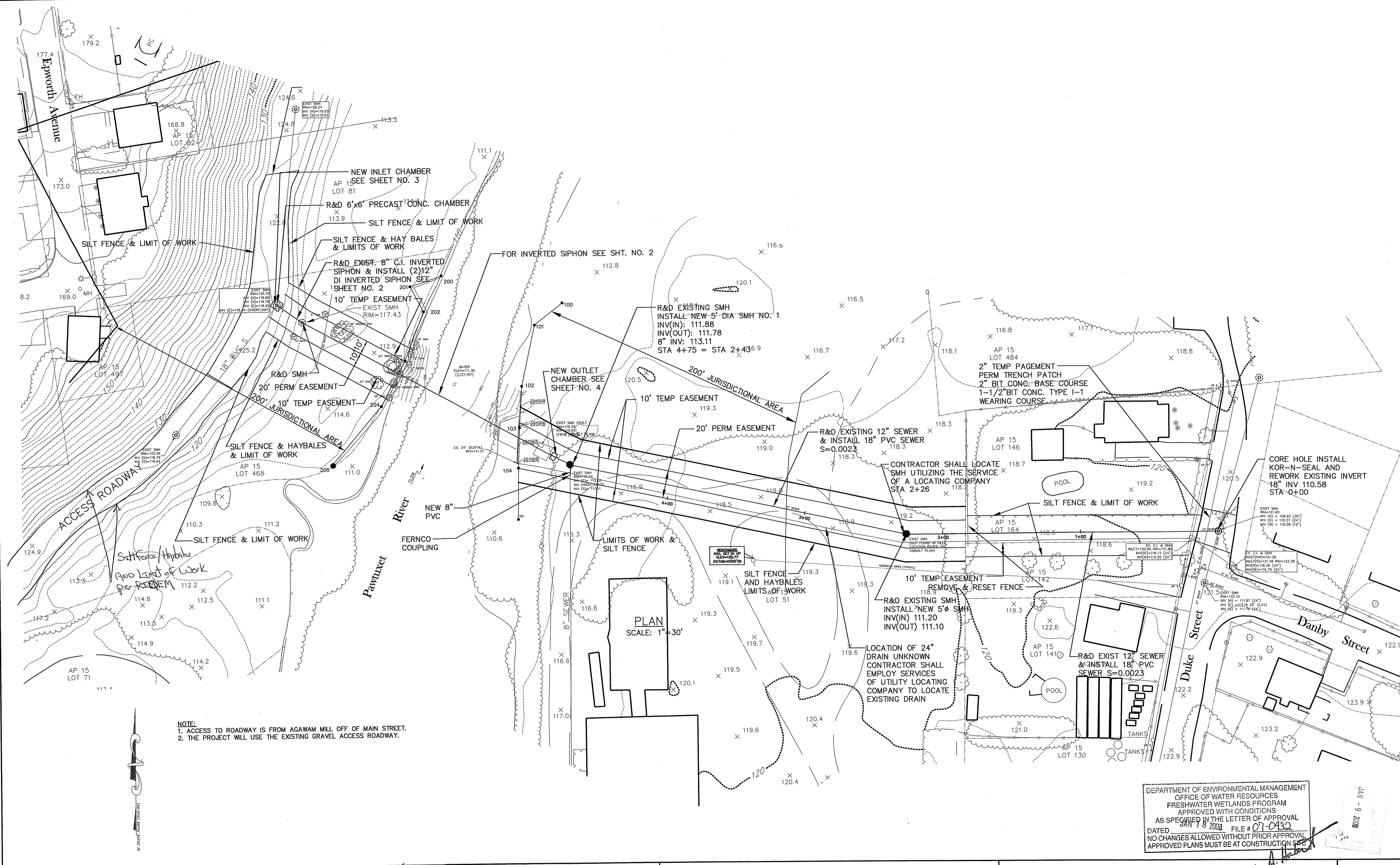


Z:\Projects\West Warwick\Agawam Siphon\1419-001 Exist Cond Plan 4-10-07.dwg, 1/8/2008 2:28:21 PM, 1050c



NOTE:
 1. ACCESS TO ROADWAY IS FROM AGAWAM MILL OFF OF MAIN STREET.
 2. THE PROJECT WILL USE THE EXISTING GRAVEL ACCESS ROADWAY.

PLAN
 SCALE: 1"=30'

DEPARTMENT OF ENVIRONMENTAL MANAGEMENT
 OFFICE OF WATER RESOURCES
 FRESHWATER WETLANDS PROGRAM
 APPROVED WITH CONDITIONS
 AS SPECIFIED IN THE LETTER OF APPROVAL
 DATED JAN 18 2008 FILE # 07-0430
 NO CHANGES ALLOWED WITHOUT PRIOR APPROVAL
 APPROVED PLANS MUST BE AT CONSTRUCTION SITE

DESIGNED BY: RMH	1	RH	01/08	RIDEM REVIEW
DRAWN BY: CJB	NO.	BY:	DATE:	REMARKS:
CHECKED BY: JJC				DATE PRINTED:
SCALE: AS SHOWN				
DATE: SEPT 2007				

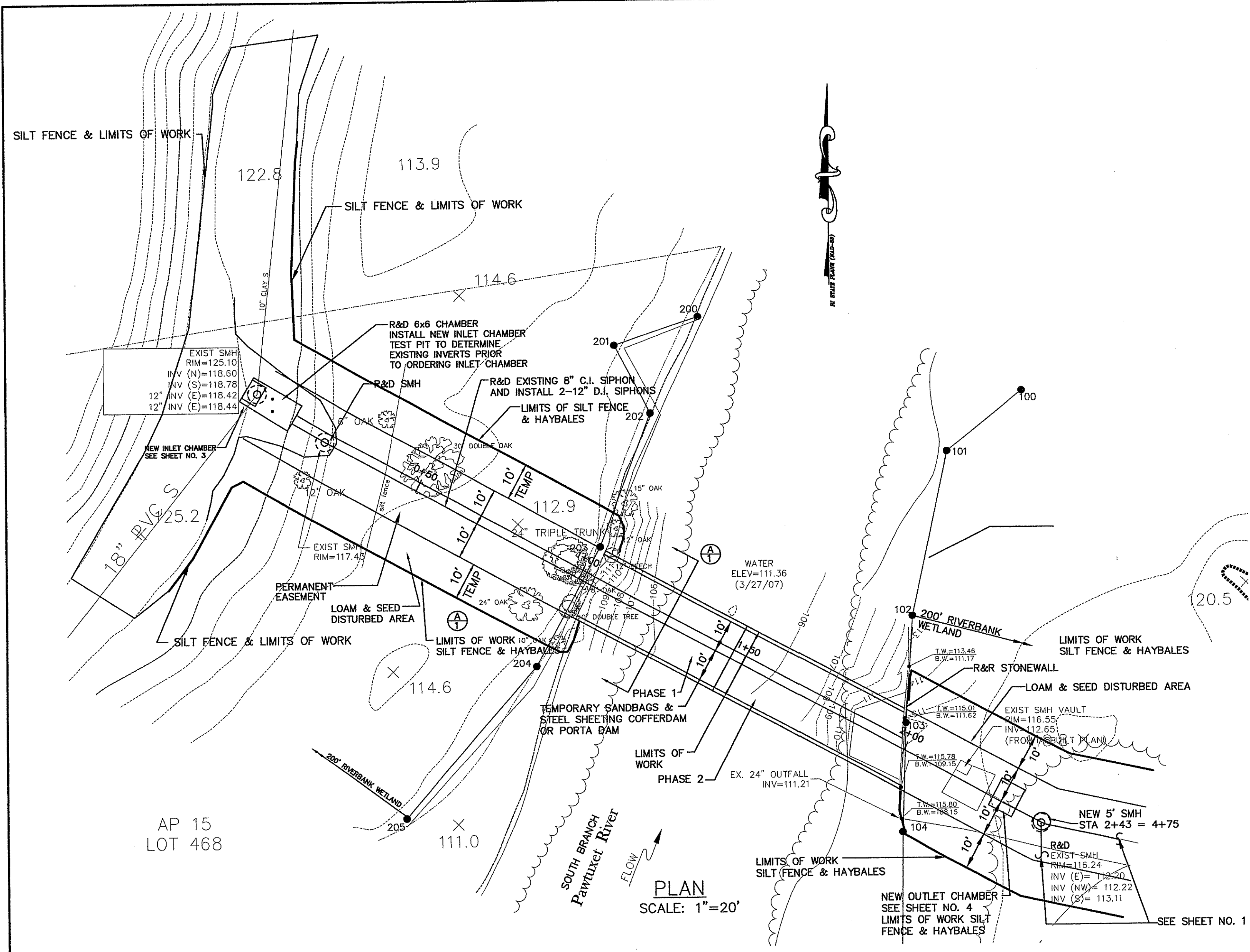
JAMES J. GEREMIA
 No. 4541
 REGISTERED PROFESSIONAL ENGINEER

JAMES J. GEREMIA & ASSOCIATES, INC.
 CONSULTING ENVIRONMENTAL ENGINEERS & SCIENTISTS
 272 W. Exchange Street Suite 201 Providence, RI 02903-1025
 Phone: 401-454-7000 Fax: 401-454-7415

AGAWAM SIPHON

PLAN
 AGAWAM SIPHON
 WEST WARWICK, RI

SHEET NO.
 1

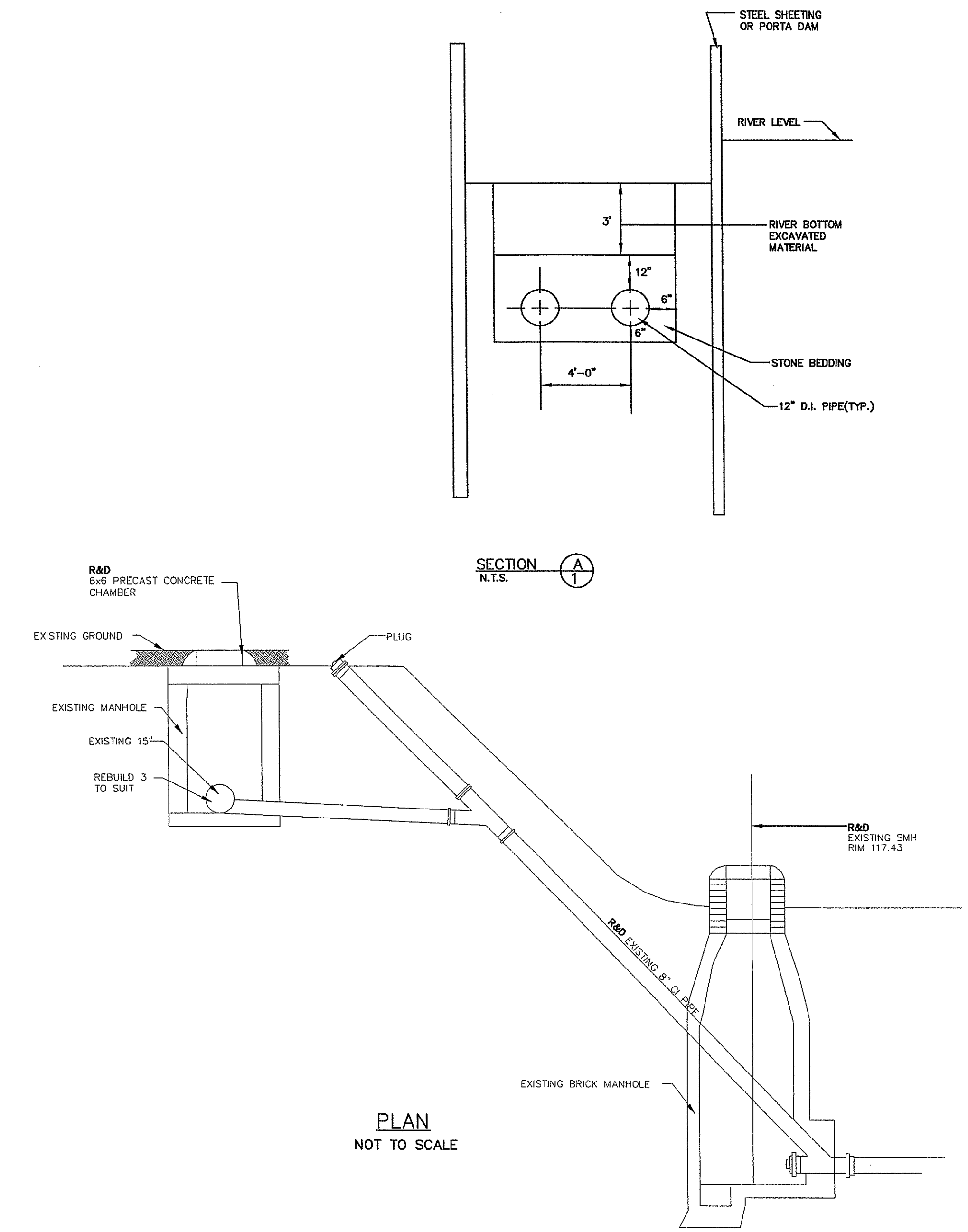


CONSTRUCTION SEQUENCE

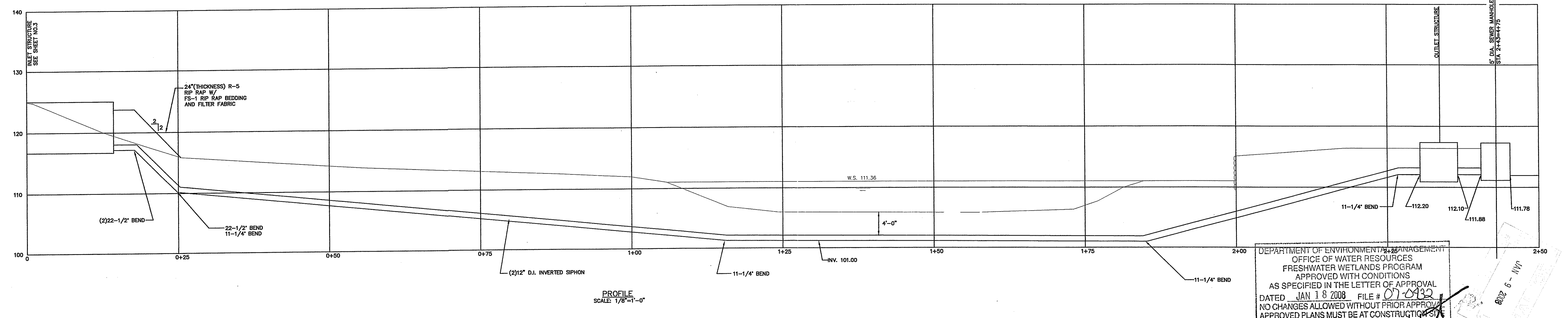
1. THE FOLLOWING IS A CONSTRUCTION SEQUENCE THAT THE CONTRACTOR WILL FOLLOW WHEN INSTALLING PIPELINE. THE CONTRACTOR, HOWEVER, MAY HAVE THE OPTION OF SUBMITTING AN ALTERNATIVE CONSTRUCTION SEQUENCE TO SATISFY THE PROJECT REQUIREMENTS, WHICH MUST BE APPROVED BY RIDEM AND THE ENGINEER. THE CONSTRUCTION SEQUENCE IS OUTLINED AS FOLLOWS:
2. REFER TO FRESHWATER WETLANDS - "PERMIT TO ALTER" RIDEM AND OTHER PERMITS, AND MAKE ALL PROVISIONS REQUIRED THEREIN.
3. INSTALL EROSION/SEDIMENTATION CONTROL DEVICES AS INDICATED IN THE CONTRACT DOCUMENTS AND AS REQUIRED BY PERMITS.
3. OBSTRUCT STREAM FLOW OVER THE WESTERN HALF OF THE PIPE INSTALLATION AREA BY PLACING SANDBAGS AND COFFERDAMS/SHEETING UPSTREAM AND DOWNSTREAM OF THE PROPOSED EXCAVATION (PHASE 1). REPOSITION SANDBAGS/SHEETING AS NECESSARY TO CONSTRUCT THE PIPELINE IN A DRY CONDITION.
4. THE CONTRACTOR IS RESPONSIBLE FOR MAINTAINING RIVER FLOWS THROUGHOUT THE DURATION OF THE PROJECT.
5. CAREFULLY REMOVE AND STOCKPILE RIVER BOTTOM EXCAVATED MATERIAL AT AN OFF-SITE LOCATION FOR LATER USE IN RESTORING RIVER BOTTOM. DISPOSE OF UNSUITABLE MATERIALS.
6. EXCAVATE AND INSTALL PIPELINE IN WESTERN HALF OF RIVER AND BANK AREA.
7. BACKFILL AND REPLACE STOCKPILED RIVER BOTTOM MATERIALS.
8. REMOVE SANDBAGS AND COFFERDAMS/SHEETING OBSTRUCTING FLOW IN THE RIVER.
9. OBSTRUCT STREAM FLOW OVER THE EASTERN HALF OF THE PIPE INSTALLATION AREA BY PLACING SANDBAGS AND COFFERDAMS/SHEETING UPSTREAM AND DOWNSTREAM OF THE PROPOSED EXCAVATION (PHASE 2). REPOSITION SANDBAGS/SHEETING AS NECESSARY TO CONSTRUCT THE PIPELINE IN A DRY CONDITION.
10. EXCAVATE AND INSTALL PIPELINE IN EASTERN HALF OF RIVER AND BANK AREA.
11. BACKFILL AND REPLACE STOCKPILED RIVER BOTTOM MATERIALS.
12. REMOVE SANDBAGS AND COFFERDAMS/SHEETING OBSTRUCTING FLOW IN THE RIVER.
13. RESTORE DISTURBED AREAS AND PERFORM FINAL CLEANUP OF AREA.
14. REMOVE EROSION/SEDIMENTATION CONTROL DEVICES. ENSURE FINAL VEGETATIVE AND STONE COVER ON BANK AND ADJACENT AREAS.

NOTES

1. ALL WATER LEVELS ARE APPROXIMATE BASED ON THE DATES NOTED. ACTUAL WATER LEVELS VARY BY SEASON AND WEATHER CONDITIONS.
2. WETLANDS DELINEATED BY APPLIED BIO-SYSTEMS, INC.
3. PROVIDE COFFERDAMS/SHEETING TO CONTROL WATER ELEVATIONS AND PERFORM INSTALLATION OF THE PIPELINE IN THE DRY.
4. HAYBALES AND SILT FENCE REQUIRED WHERE SHOWN AND AS DIRECTED BY THE ENGINEER.
5. THE 100-YEAR FLOOD ELEVATION = 115.5 (BASED ON FEMA FLOOD INSURANCE RATE MAP).



PLAN
NOT TO SCALE



PROFILE
SCALE: 1/8"=1'-0"

DEPARTMENT OF ENVIRONMENTAL MANAGEMENT
OFFICE OF WATER RESOURCES
FRESHWATER WETLANDS PROGRAM
APPROVED WITH CONDITIONS
AS SPECIFIED IN THE LETTER OF APPROVAL
DATED JAN 18 2008 FILE # 07-0132
NO CHANGES ALLOWED WITHOUT PRIOR APPROVAL
APPROVED PLANS MUST BE AT CONSTRUCTION SITE

NO.	BY:	DATE:	REMARKS:
1	RH	01/08	RIDEM REVIEW
CADD FILE: _____ DATE PRINTED: _____			

DESIGNED BY: RMH
DRAWN BY: CJB
CHECKED BY: JGG
SCALE: AS SHOWN
DATE: SEPT 2007

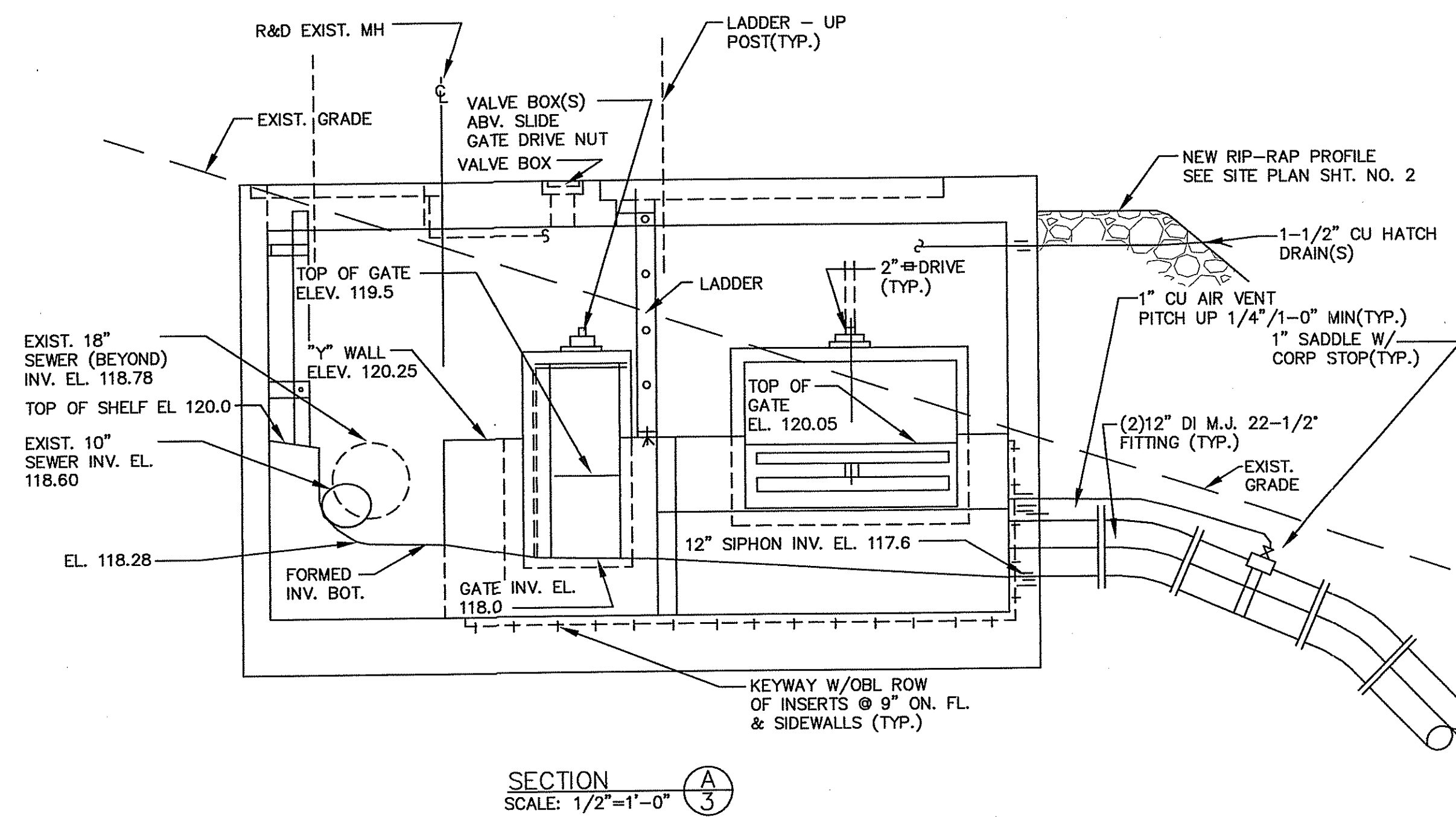
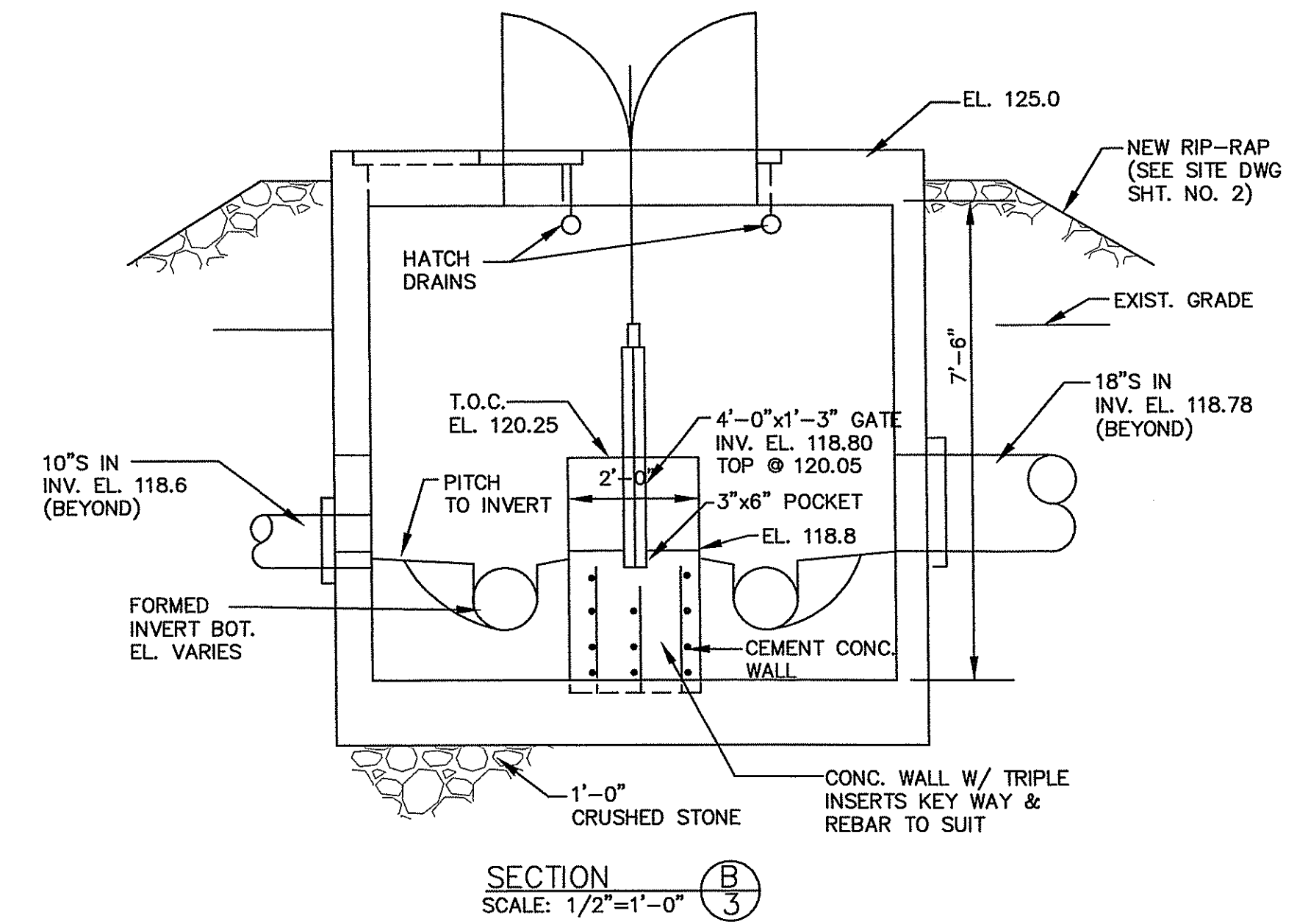
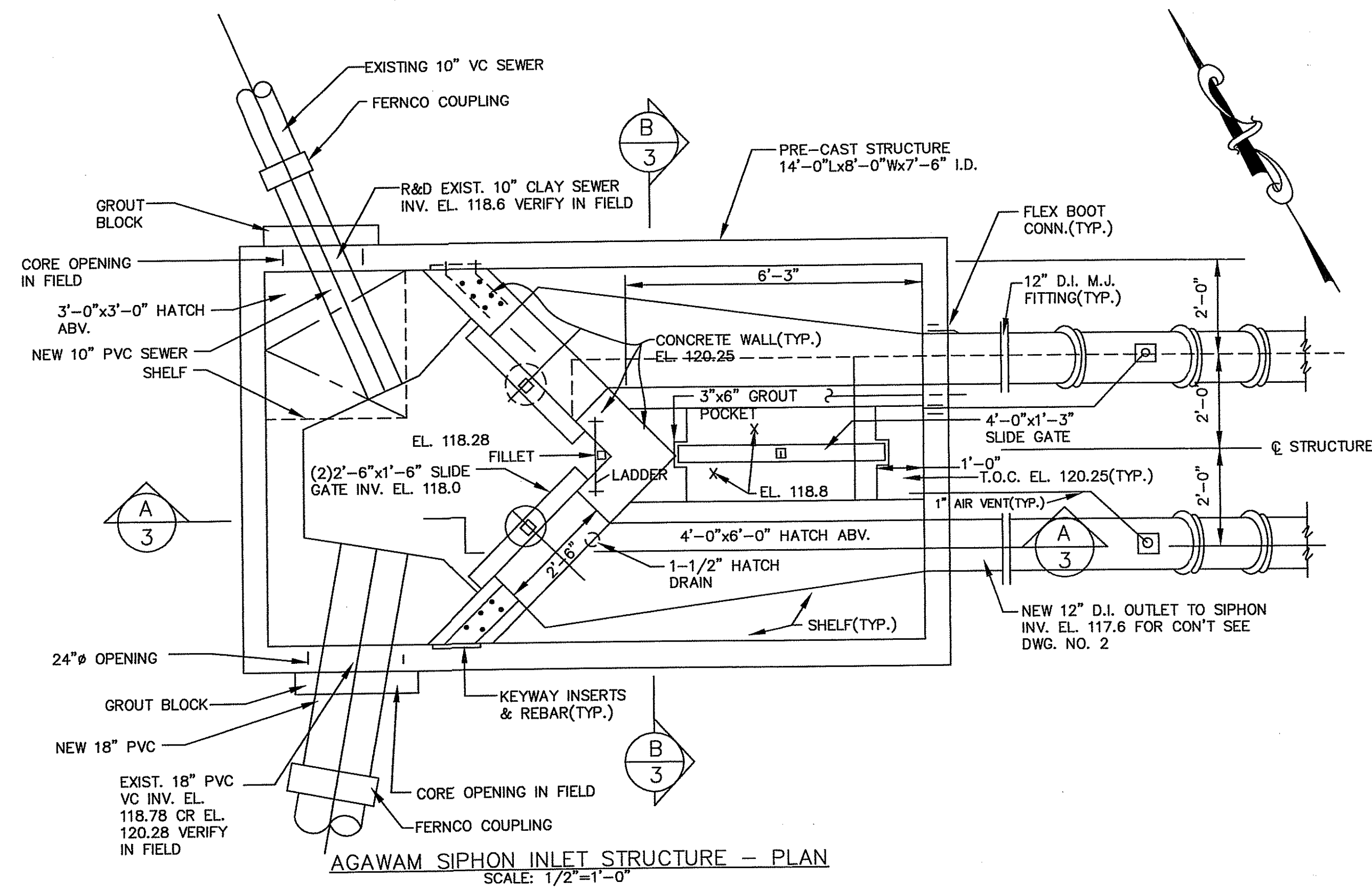
JAMES J. GEREMIA & ASSOCIATES, INC.
CONSULTING ENVIRONMENTAL ENGINEERS & SCIENTISTS
272 W. Exchange Street Suite 201 Providence, RI 02903-1025
Phone: 401-454-7000 Fax: 401-454-7415

AGAWAM SIPHON

PLAN
AGAWAM SIPHON PROFILE & DETAILS
WEST WARWICK, RI

SHEET NO.
2

Z:\Projects\West Warwick\Agawam Siphon\1419-001_Exist_Cond_Plan 4-10-07.dwg, 1/8/2008 2:36:13 PM, 1050c

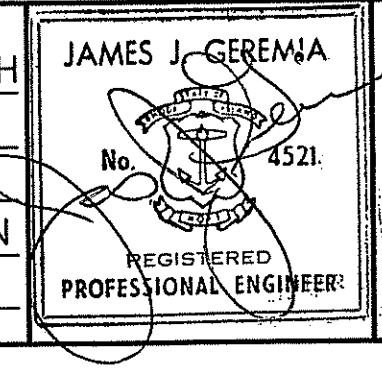


DEPARTMENT OF ENVIRONMENTAL MANAGEMENT
OFFICE OF WATER RESOURCES
FRESHWATER WETLANDS PROGRAM
APPROVED WITH CONDITIONS
AS SPECIFIED IN THE LETTER OF APPROVAL
DATED JAN 18 2008 FILE # 07-0432
NO CHANGES ALLOWED WITHOUT PRIOR APPROVAL
APPROVED PLANS MUST BE AT CONSTRUCTION

JAN - 9 2008

NO.:	BY:	DATE:	REMARKS:
CADD FILE:			DATE PRINTED:

DESIGNED BY: RMH
DRAWN BY: CJB
CHECKED BY: JJC
SCALE: AS SHOWN
DATE: SEPT 2007

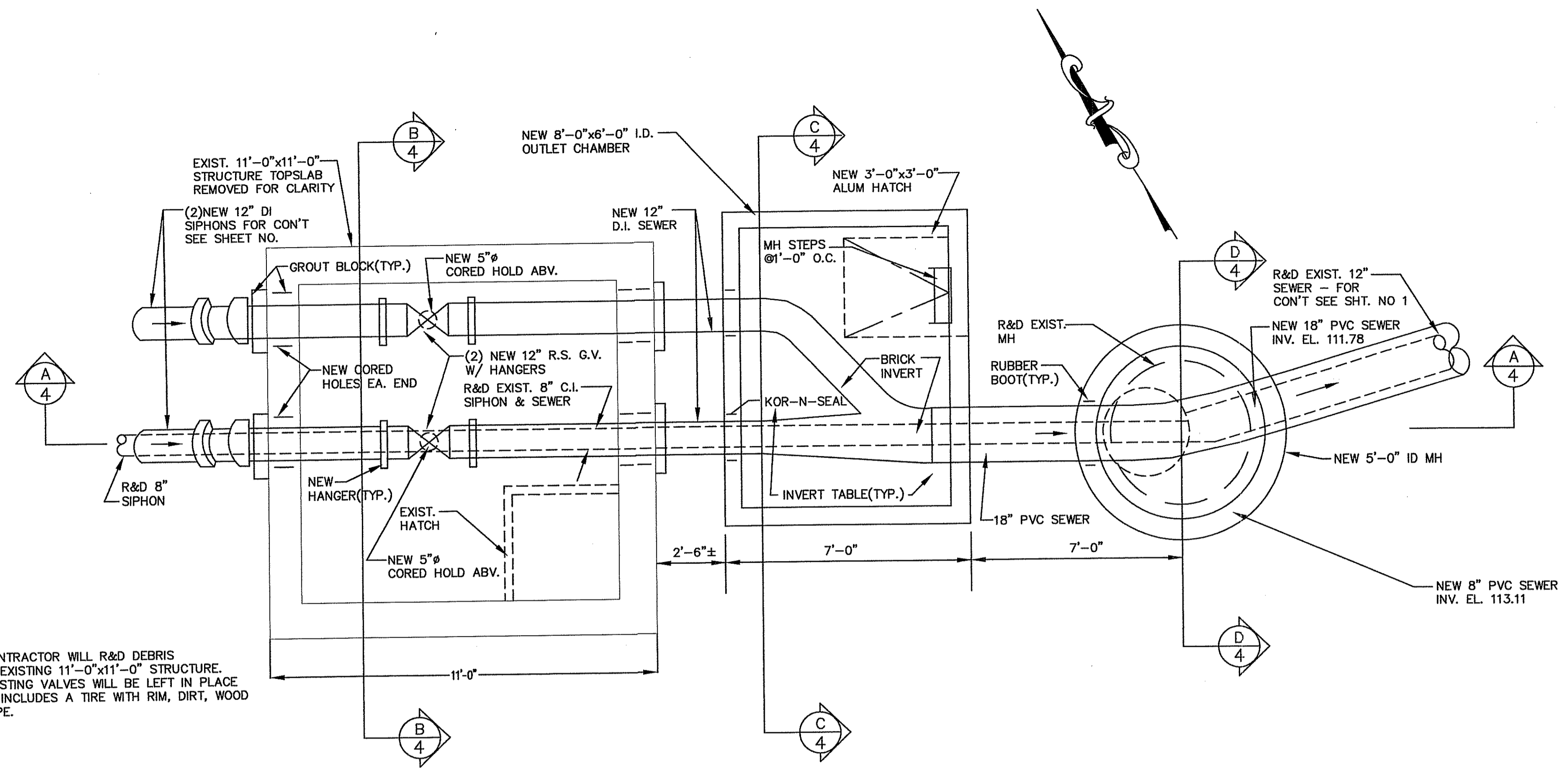


JAMES J. GEREMIA & ASSOCIATES, INC.
CONSULTING ENVIRONMENTAL ENGINEERS & SCIENTISTS
272 W. Exchange Street Suite 201 Providence, RI 02903-1025
Phone: 401-454-7000 Fax: 401-454-7415

AGAWAM SIPHON

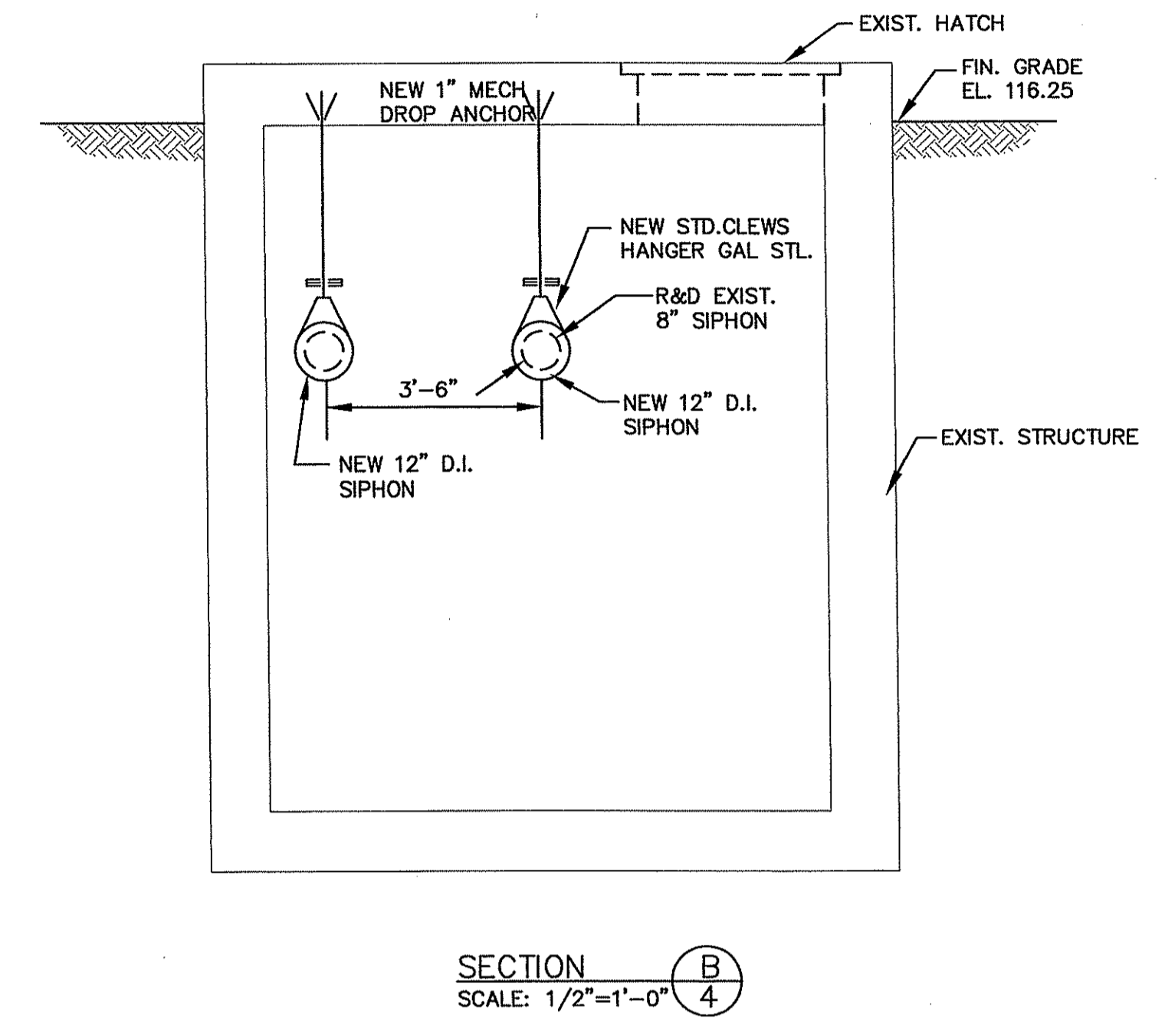
PLAN AND SECTIONS
AGAWAM SIPHON DETAILS
WEST WARWICK, RI

SHEET NO.
3

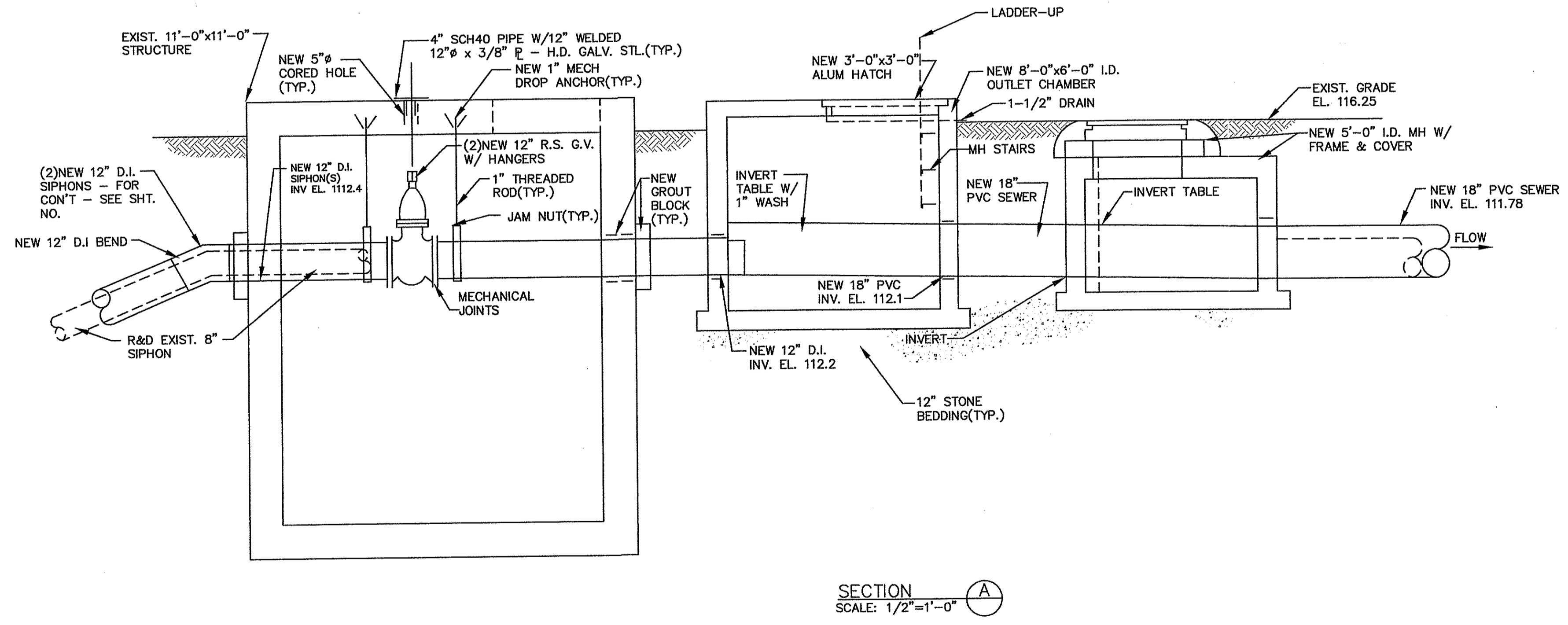


NOTE:
 THE CONTRACTOR WILL R&D DEBRIS
 IN THE EXISTING 11'-0"x11'-0" STRUCTURE.
 THE EXISTING VALVES WILL BE LEFT IN PLACE
 DEBRIS INCLUDES A TIRE WITH RIM, DIRT, WOOD
 AND PIPE.

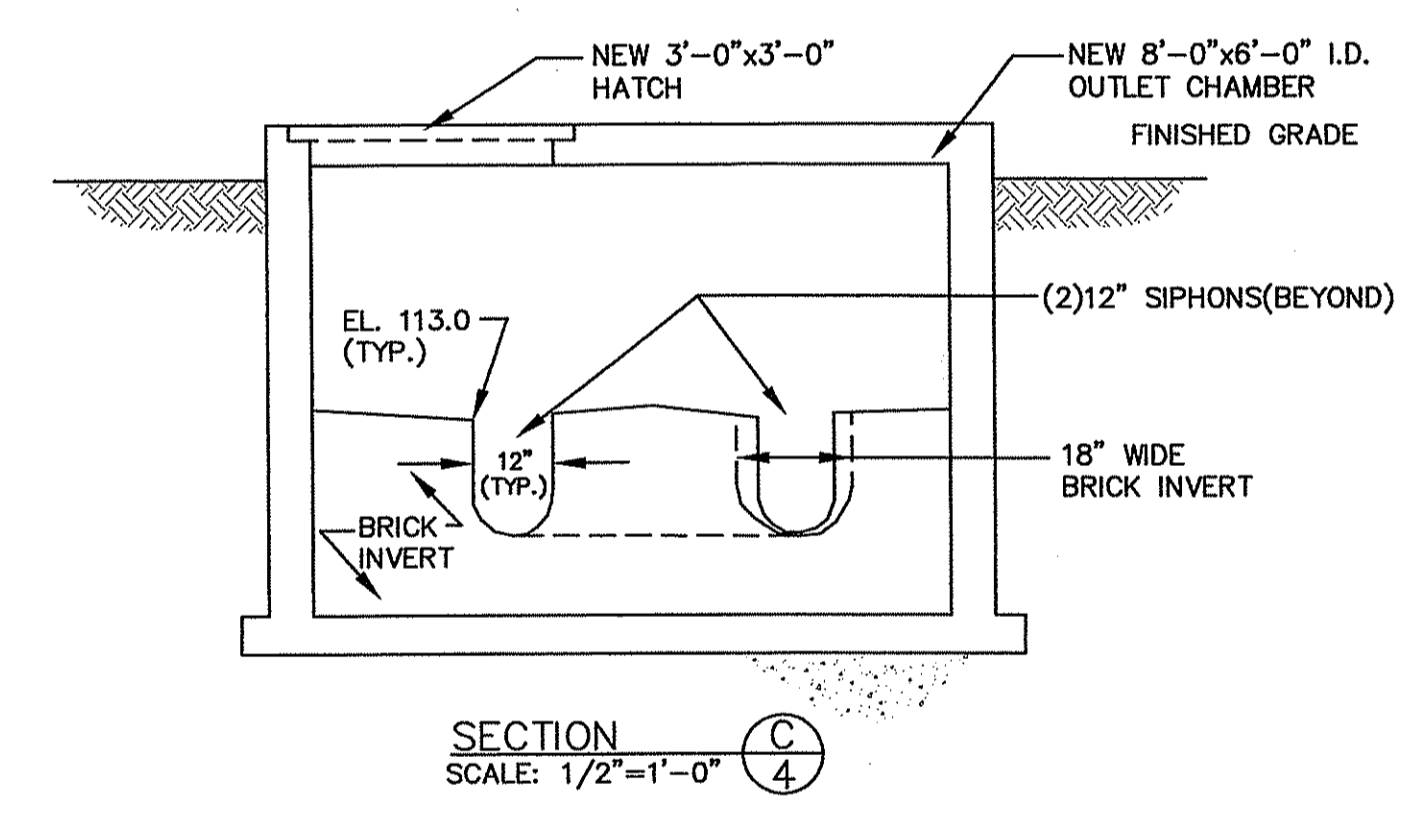
AGAWAM SIPHON OUTLET STRUCTURE - PLAN
 SCALE: 1/2"=1'-0"



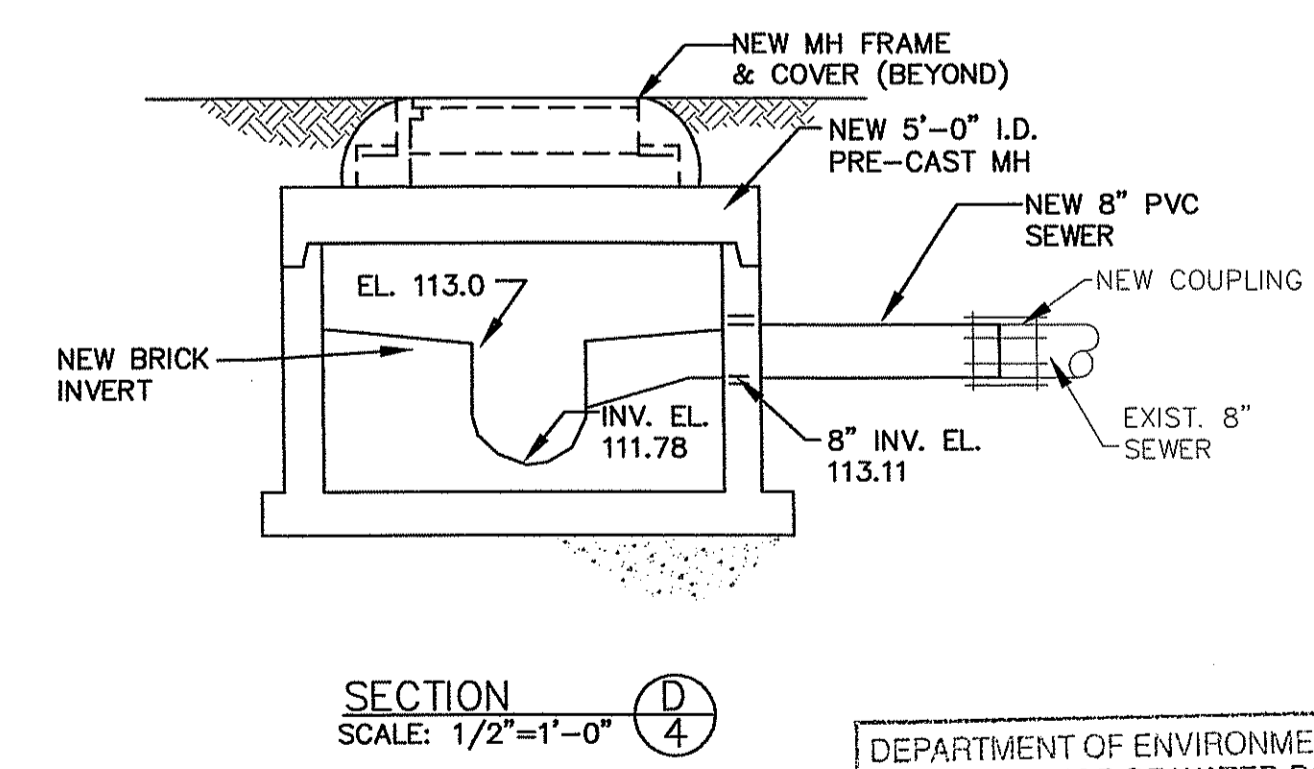
SECTION B-B
 SCALE: 1/2"=1'-0"



SECTION A-A
 SCALE: 1/2"=1'-0"



SECTION C-C
 SCALE: 1/2"=1'-0"



SECTION D-D
 SCALE: 1/2"=1'-0"

DEPARTMENT OF ENVIRONMENTAL MANAGEMENT
 OFFICE OF WATER RESOURCES
 FRESHWATER WETLANDS PROGRAM
 APPROVED WITH CONDITIONS
 AS SPECIFIED IN THE LETTER OF APPROVAL
 DATED JAN 18 2008 FILE # 07-0932
 NO CHANGES ALLOWED WITHOUT PRIOR APPROVAL
 APPROVED PLANS MUST BE AT CONSTRUCTION SITE

NO.	BY:	DATE:	REMARKS:
CADD FILE:			DATE PRINTED:

DESIGNED BY: RMH
 DRAWN BY: CJB
 CHECKED BY: JJG
 SCALE: AS SHOWN
 DATE: SEPT 2007

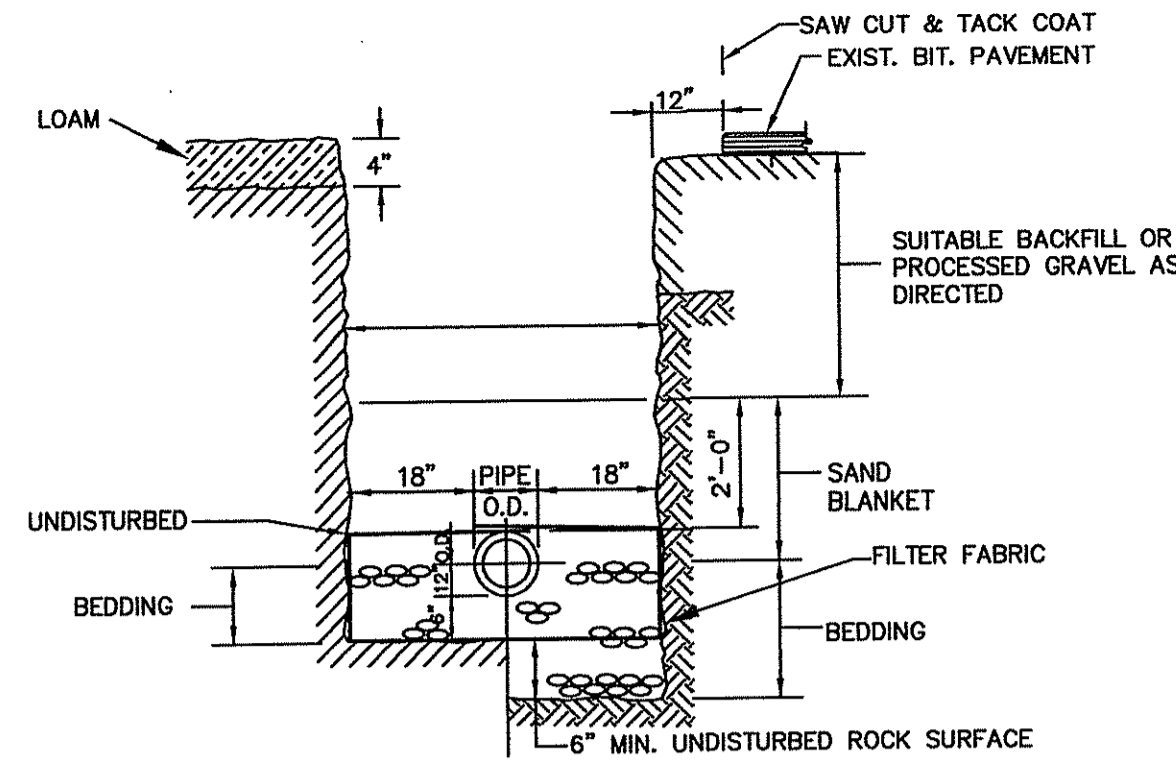
JAMES J. GEREMIA & ASSOCIATES, INC.
 CONSULTING ENVIRONMENTAL ENGINEERS & SCIENTISTS
 272 W. Exchange Street Suite 201 Providence, RI 02903-1025
 Phone: 401-454-7000 Fax: 401-454-7415

AGAWAM SIPHON

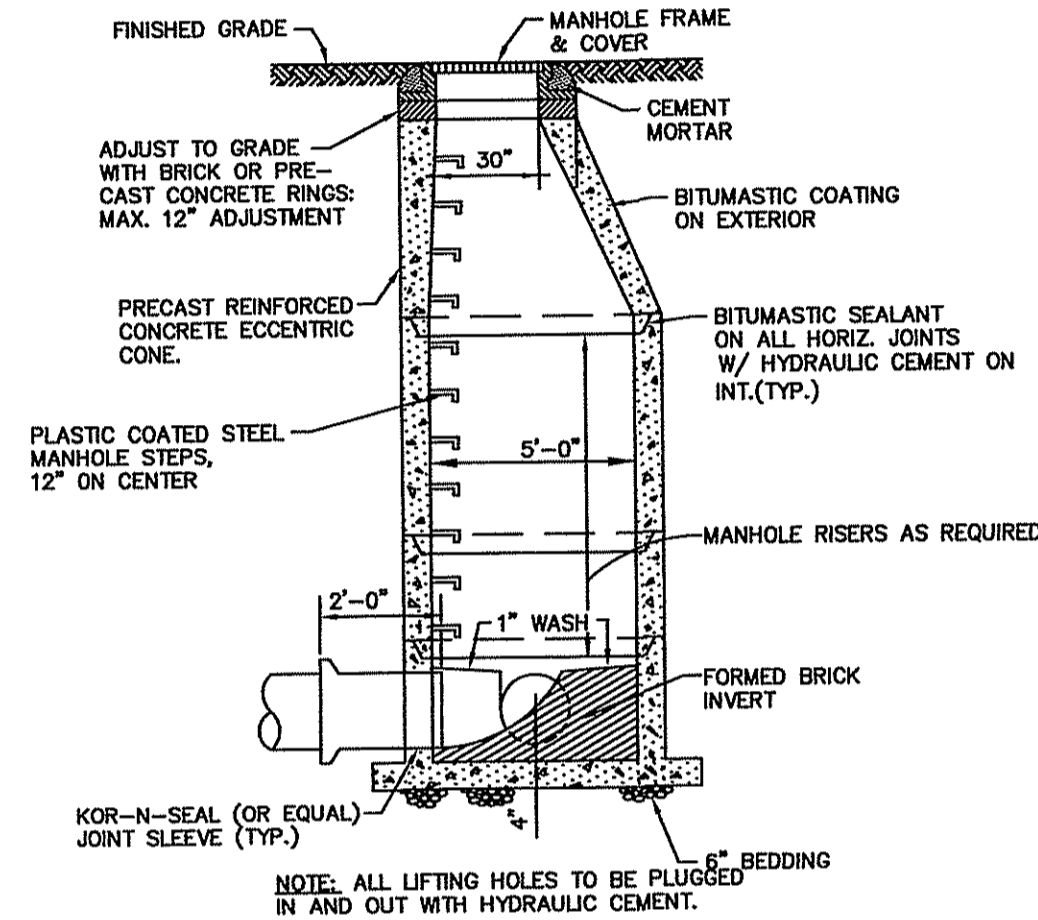
PLAN AND SECTIONS
 AGAWAM SIPHON DETAILS
 WEST WARWICK, RI

GENERAL NOTES:

- TOPOGRAPHIC BASEMAP BY BOYER & ASSOCIATES. ADDITIONAL FIELD WORK & DATA COMPILATION PERFORMED BY DIPRETE ENGINEERING ASSOCIATES, INC. ALONG THE EXISTING SEWER ROUTES AND PAWTUCKET RIVER CROSS SECTIONS.
- LOCATION AND DEPTHS OF EXISTING UTILITIES ARE APPROXIMATE AND HAVE BEEN PLOTTED FROM THE BEST AVAILABLE INFORMATION BY BOYER ASSOCIATES THE CONTRACTOR SHALL VERIFY LOCATIONS OF ALL EXIST. UTILITIES AND NOTIFY THE APPROPRIATED UTILITY AUTHORITIES INCLUDING "DIG SAFE" PRIOR TO STARTING WORK ANY DAMAGE TO UTILITIES CAUSED BY THE CONTRACTOR'S OPERATIONS SHALL BE THE RESPONSIBILITY OF THE CONTRACTOR AND THE COST OF REPAIRS SHALL BE BORNE BY THE CONTRACTOR AT NO ADDITIONAL EXPENSE TO THE OWNER.
- THE CONTRACTOR SHALL CONFINE HIS OPERATIONS AND ACTIVITIES FOR CONSTRUCTION PURPOSES TO WITHIN THE STREET LINES & EASEMENTS
- ALL AREAS DISTURBED BY THE CONTRACTOR SHALL BE RESTORED TO THEIR ORIGINAL CONDITION.
- WATER, GAS, SEWER AND OTHER UTILITIES SHALL BE MAINTAINED AT ALL TIMES DURING CONSTRUCTION.
- ALL GRASSED AREAS DISTURBED BY THE CONTRACTOR'S OPERATIONS SHALL BE LOOMED AND SEEDED.
- ALL ELEVATIONS ARE BASED ON NATIONAL GEODETIC VERTICAL DATUM OF 1929 BASED ON FEMA REFERENCE MAP.
- SAW CUT PAVEMENT FULL-DEPTH PRIOR TO THE INSTALLATION OF SEWERS.
- AT THE END OF EACH WORK DAY THE TRENCH SHALL BE TOTALLY BACKFILLED AND 2" TEMPORARY PAVEMENT INSTALLED WITHIN ROADWAY.
- DEWATERING SYSTEMS EFFLUENT FOR TRENCH EXCAVATIONS SHALL BE DISCHARGED INTO DEWATERING BASINS. THE EFFLUENT FROM THE DEWATERING BASINS SHALL HAVE NO VISUAL SEDIMENTATION PRESENT AND SHALL NOT CAUSE SILTATION OF EXISTING DRAINAGE SYSTEM AND REGULATED WETLANDS. THE DEWATERING BASINS SHALL HAVE A VOLUME NOT LESS THAN THE TOTAL VOLUME OF WATER THAT WILL BE PUMPED DURING A FOUR - HOUR PERIOD.
- THE DEWATERING BASINS SHALL BE DESIGNED IN ACCORDANCE WITH THE R.I. SOIL EROSION AND SEDIMENTATION CONTROL HANDBOOK.
- THE CONTRACTOR SHALL SUBMIT CALCULATIONS FOR SIZING OF DEWATERING BASINS TO THE ENGINEER FOR REVIEW.
- THE CONTRACTOR WILL BE RESPONSIBLE FOR SEDIMENTATION THAT ENTERS THE DRAINAGE SYSTEM AND REGULATED WETLANDS. THE WETLANDS SHALL BE RESTORED IN ACCORDANCE WITH RIDEM REQUIREMENTS AT NO ADDITIONAL COST TO THE OWNER. THE CONTRACTOR WILL BE RESPONSIBLE FOR FINES THAT MAY BE IMPOSED BY THE RIDEM, AND THE OWNER WILL NOT REIMBURSE THE CONTRACTOR.
- IF DRAIN PIPES ARE REMOVED THEY SHALL BE RESET OR REPLACED IMMEDIATELY IN ACCORDANCE WITH THE DEPARTMENT OF PUBLIC WORKS.
- THE CONTRACTOR WILL BE REQUIRED TO PROVIDE CERTIFICATION BY PROFESSIONAL ENGINEER THAT THE SOIL COMPACTION OF TRENCHES MEETS SPECIFIED STANDARDS.
- CONTRACTOR SHALL HAVE UTILITY COMPANY SECURE POLES AS REQUIRED. AT NO ADDITIONAL COST TO THE OWNER.

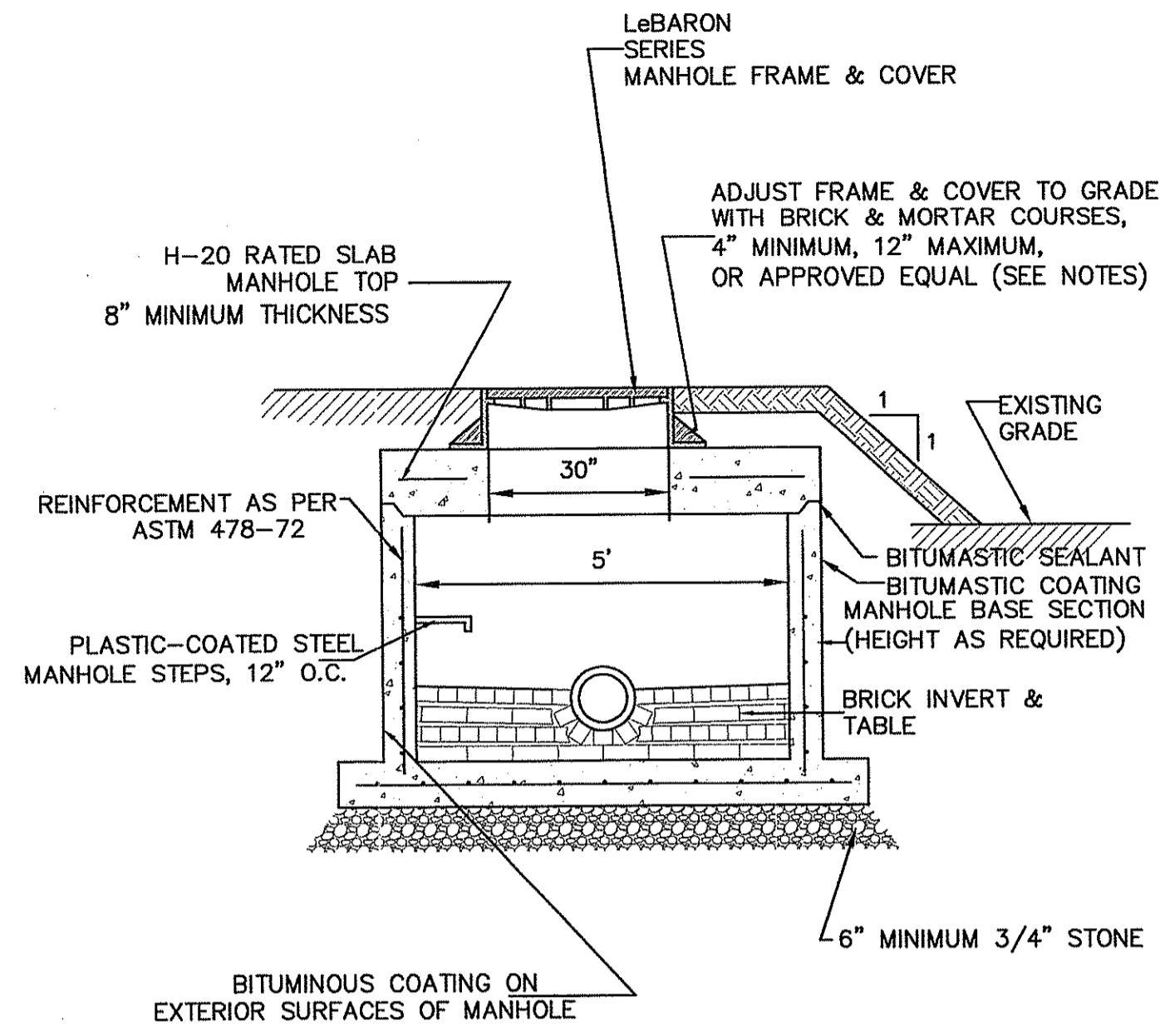


SEWER TRENCH DETAIL



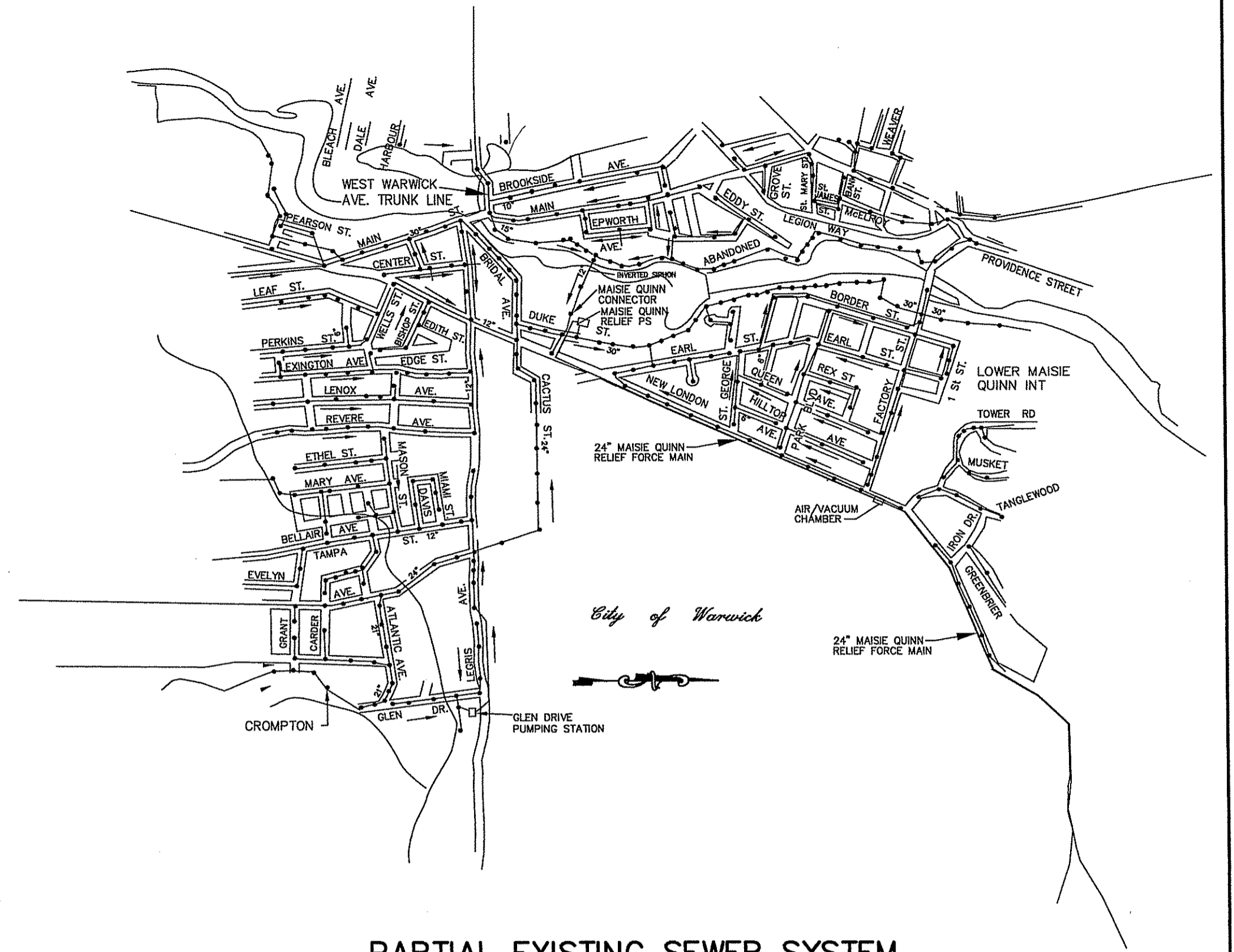
SANITARY MANHOLE DETAIL

N.T.S.
NOTE: ALL LIFTING HOLES TO BE PLUGGED IN AND OUT WITH HYDRAULIC CEMENT.



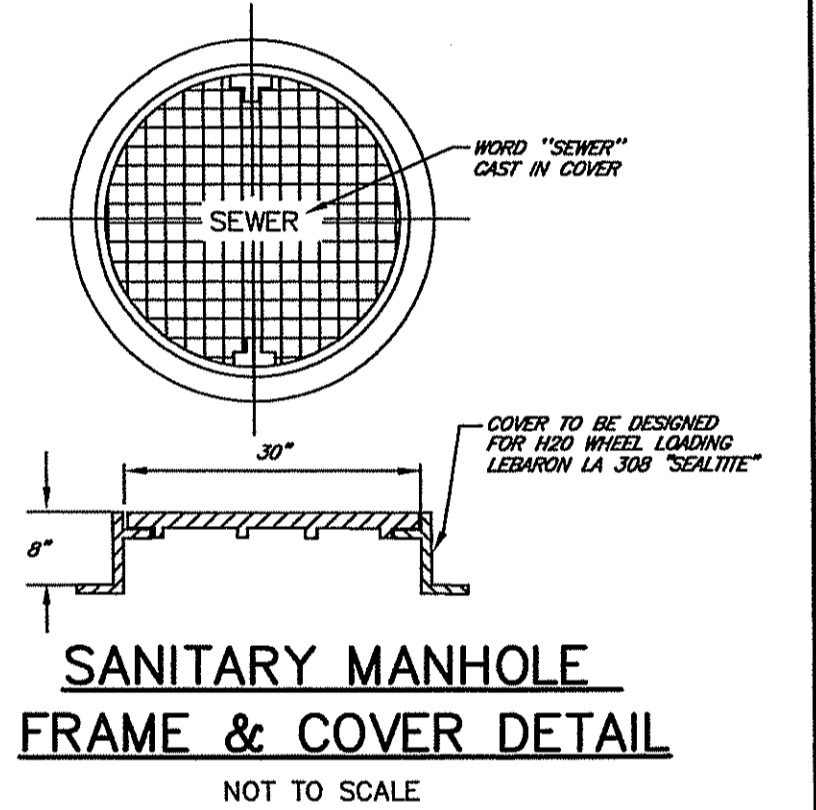
PRECAST CONCRETE LOW PROFILE MANHOLE

NOT TO SCALE



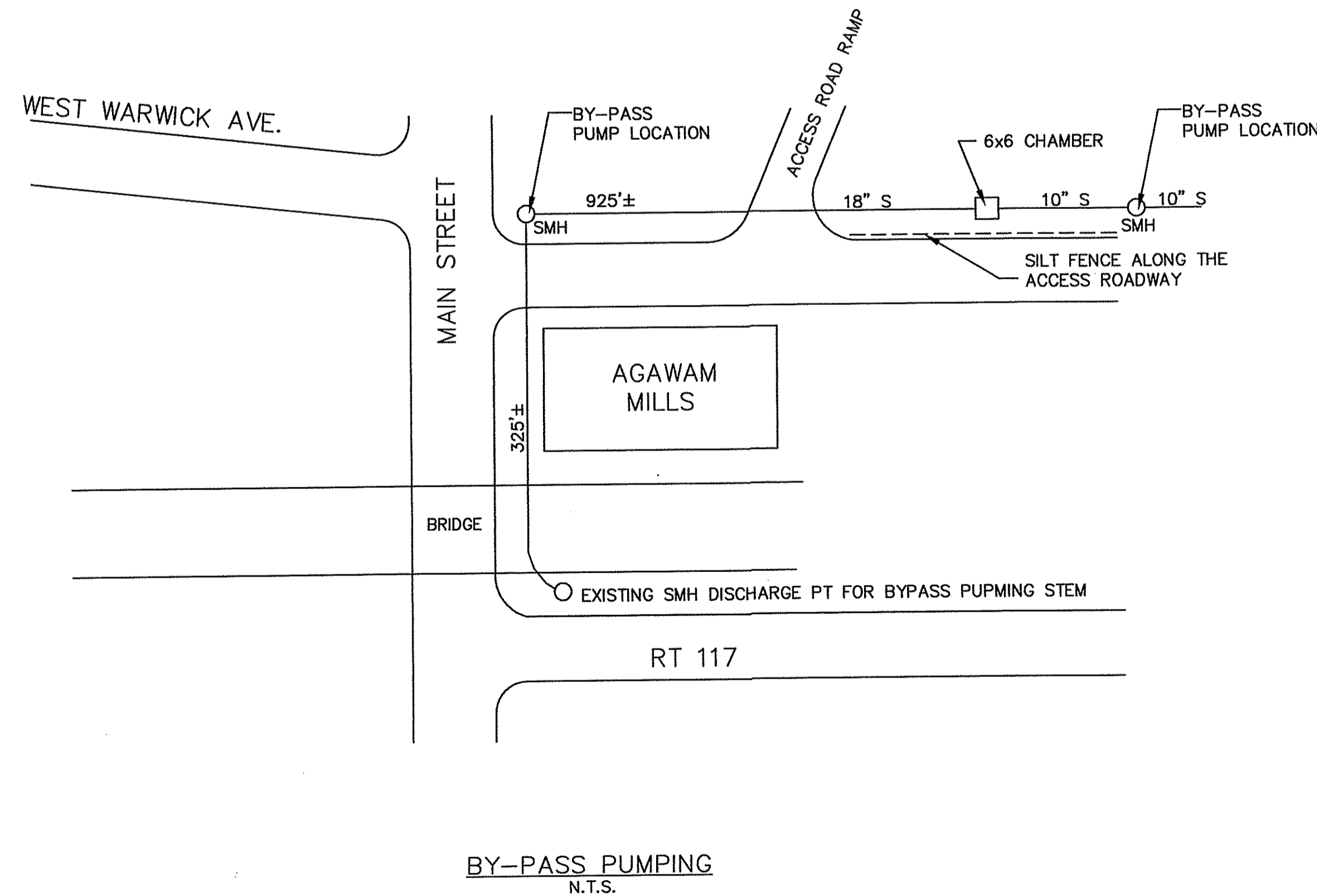
PARTIAL EXISTING SEWER SYSTEM

NOT TO SCALE



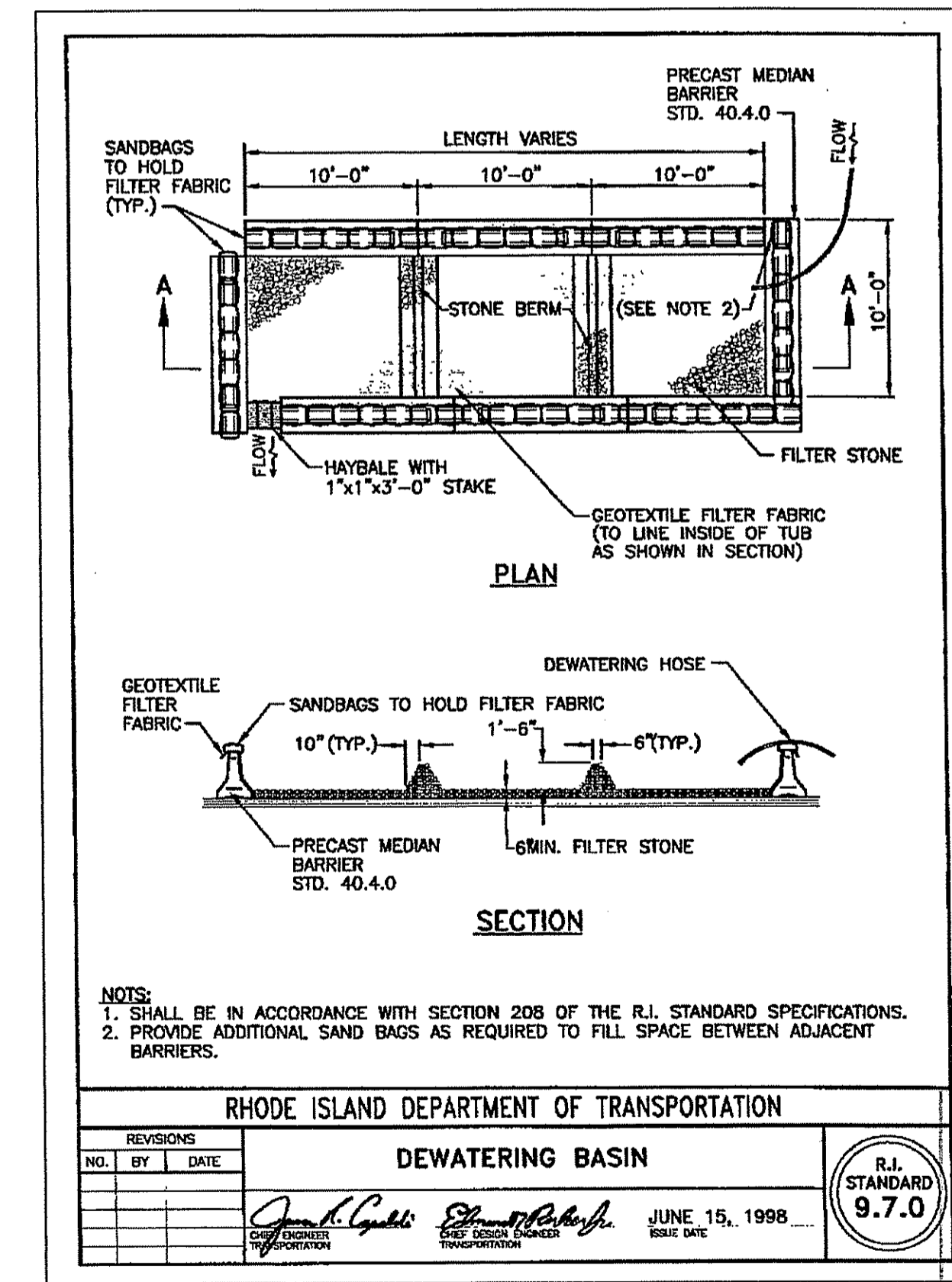
SANITARY MANHOLE FRAME & COVER DETAIL

NOT TO SCALE



BY-PASS PUMPING

N.T.S.



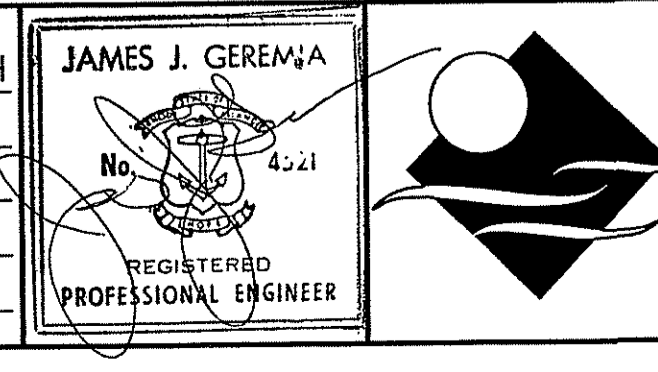
NOTES:
1. SHALL BE IN ACCORDANCE WITH SECTION 208 OF THE R.I. STANDARD SPECIFICATIONS.
2. PROVIDE ADDITIONAL SAND BAGS AS REQUIRED TO FILL SPACE BETWEEN ADJACENT BARRIERS.

REVISIONS		
NO.	BY	DATE

RHODE ISLAND DEPARTMENT OF TRANSPORTATION
DEWATERING BASIN
JAMES J. GEREMIA
REGISTERED PROFESSIONAL ENGINEER
JUNE 15, 1998
R.I. STANDARD 9.7.0

DEPARTMENT OF ENVIRONMENTAL MANAGEMENT
OFFICE OF WATER RESOURCES
FRESHWATER WETLANDS PROGRAM
APPROVED WITH CONDITIONS
AS SPECIFIED IN THE LETTER OF APPROVAL
DATED JAN 10 2000 FILE # 07-0432
AND CHANGES ALLOWED WITHOUT PRIOR APPROVAL
APPROVED PLANS MUST BE AT CONSTRUCTION SITE

DESIGNED BY: RH	DATE: SEPT 2007
DRAWN BY: CJB	REMARKS:
CHECKED BY: JGA	DATE PRINTED:
SCALE: NTS	
NO. BY DATE	
CADD FILE:	



JAMES J. GEREMIA & ASSOCIATES, INC.
CONSULTING ENVIRONMENTAL ENGINEERS & SCIENTISTS
272 W. Exchange Street Suite 201 Providence, RI 02903-1025
Phone: 401-454-7000 Fax: 401-454-7415

AGAWAM SIPHON

MISCELLANEOUS DETAILS

SHEET NO. 5