

INDEX

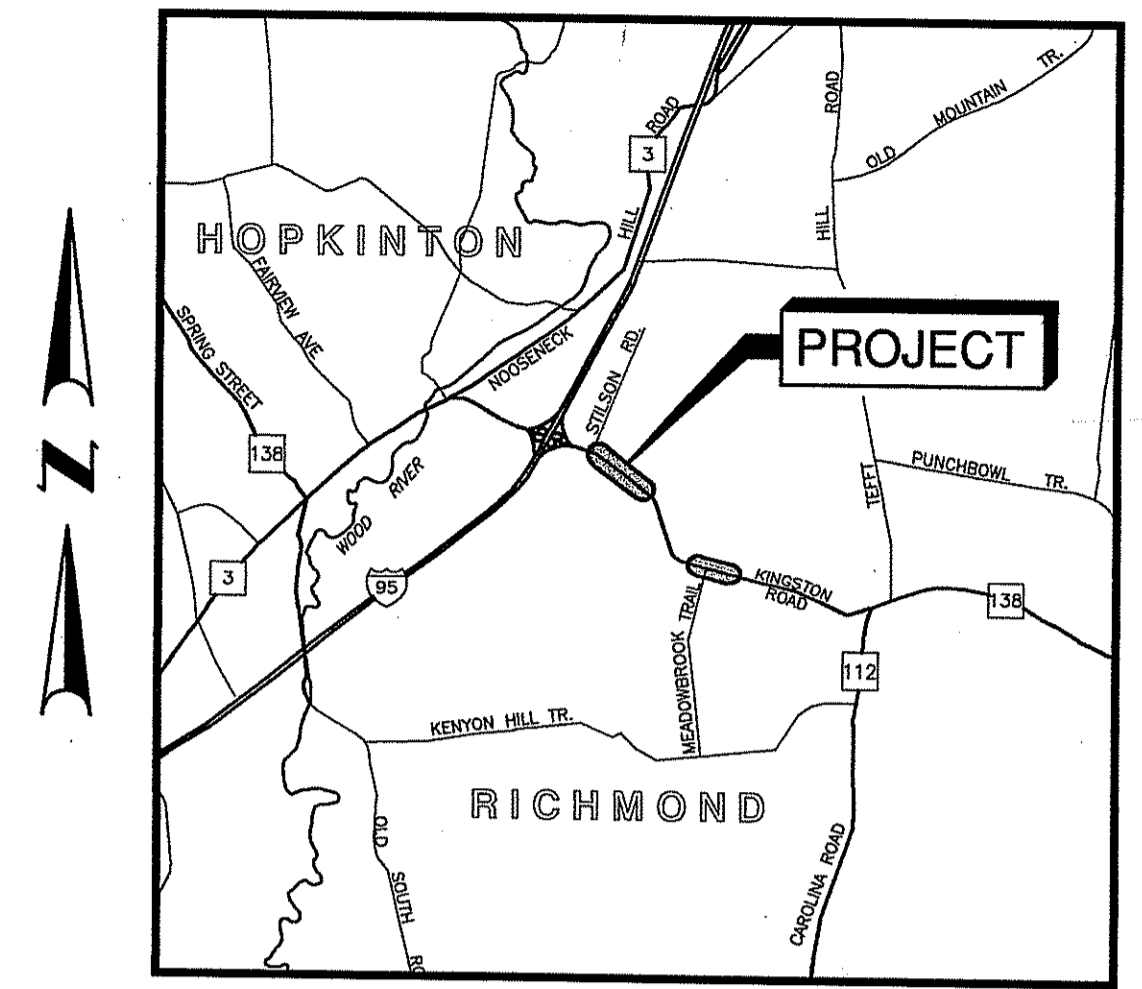
SHEET NO.	DESCRIPTION
1	COVER SHEET
2	PLAN SYMBOLS AND LEGEND
3 & 4	NOTES 1 & 2
5	TYPICAL SECTIONS
6 - 12	GENERAL & DRAINAGE PLANS 1-7
13	INFILTRATION STRUCTURES SYSTEMS 2 & 3
14	GRADING PLAN
15 & 16	MISCELLANEOUS DETAILS 1 & 2
17 & 18	RHODE ISLAND STANDARD DETAILS 1 & 2

RICHMOND COMMONS VILLAGE CENTER

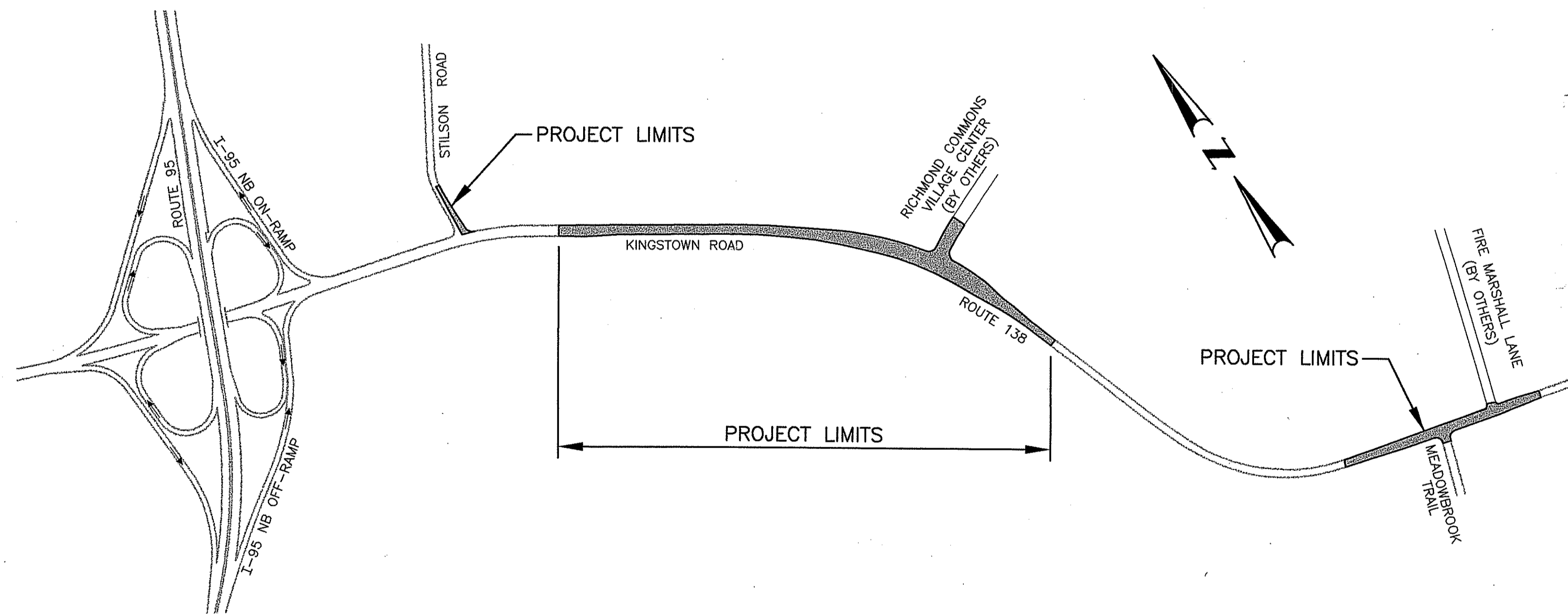
RICHMOND, RHODE ISLAND

ROUTE 138 ROADWAY IMPROVEMENTS

RIDOT PAPA NUMBER 050324-E



LOCATION MAP
SCALE: 1" = 1 MILE

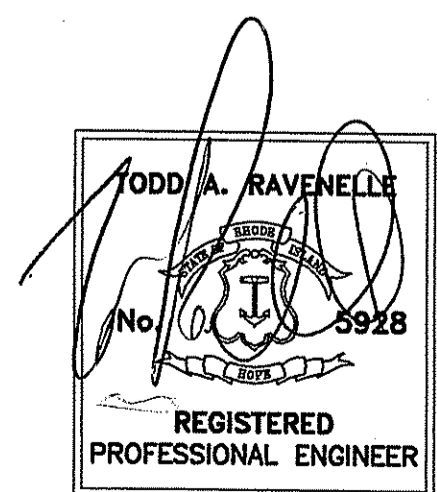


LAYOUT
SCALE 1"=400'±

DEPARTMENT OF ENVIRONMENTAL MANAGEMENT
OFFICE OF WATER RESOURCES
FRESHWATER WETLANDS PROGRAM
APPROVED WITH CONDITIONS
AS SPECIFIED IN THE LETTER OF APPROVAL
DATED MAR 26 2008 FILE # 07-0463
NO CHANGES ALLOWED WITHOUT PRIOR APPROVAL
APPROVED PLANS MUST BE AT CONSTRUCTION SITE

Martin D. Wencel

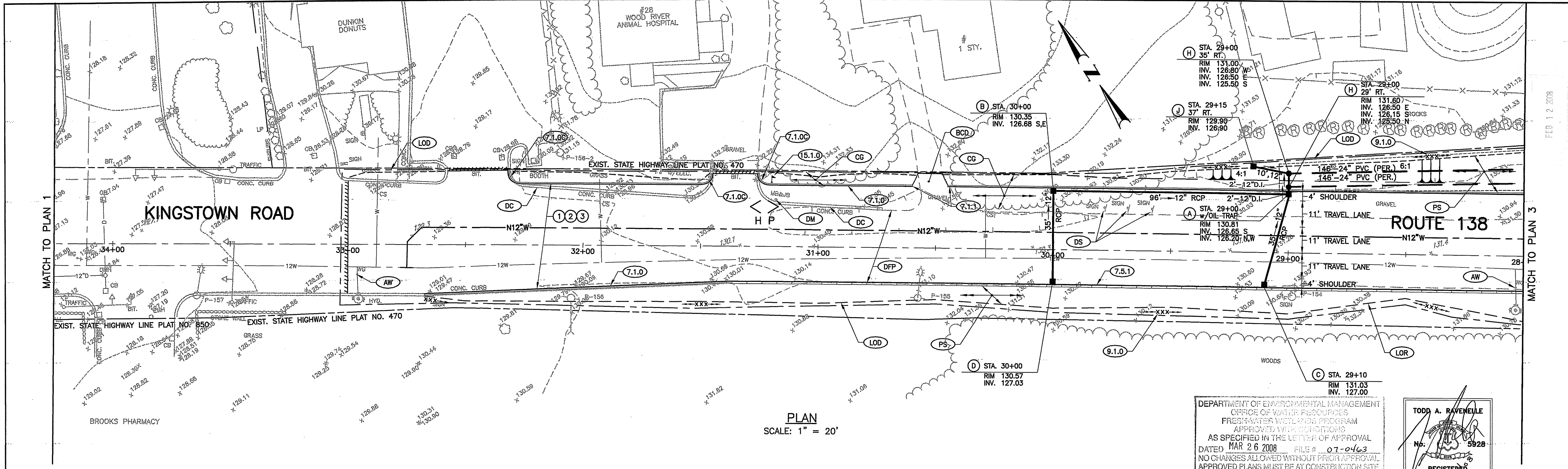
R.I.D.E.M. APPLICATION
SUBMISSION



GRI
Gordon R. Archibald, Inc.
Professional Engineers

F:\FILES\CAD\1112\1112_WETLAND\1112_001_WETLAND_COVER.DWG

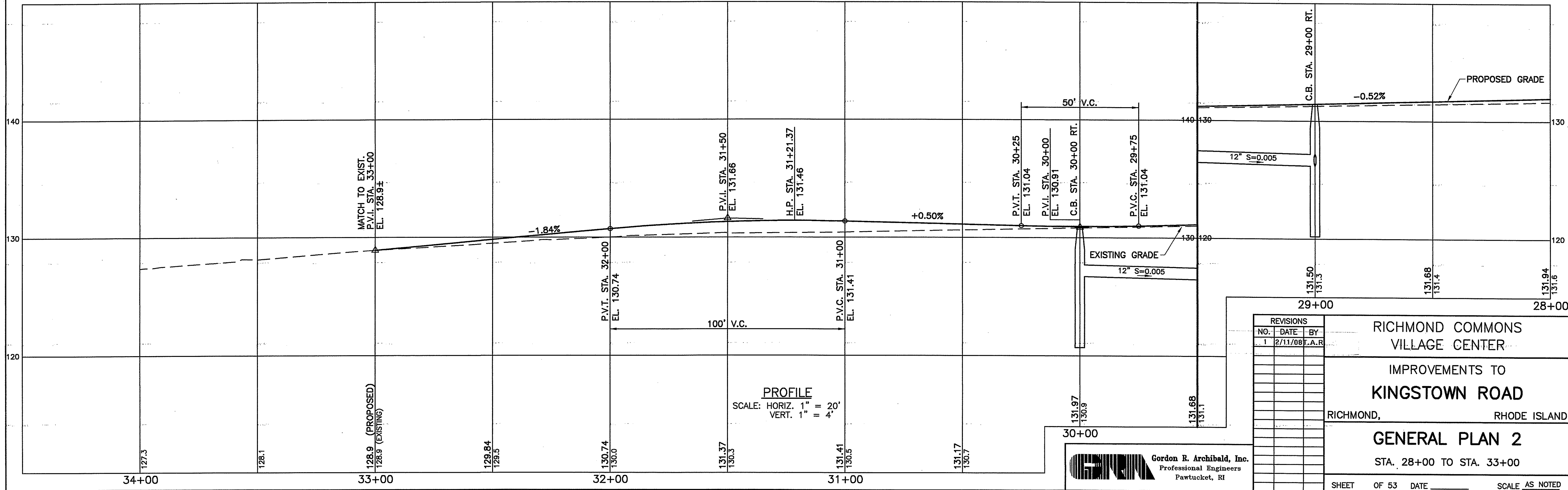
FEB 12 2008



DEPARTMENT OF ENVIRONMENTAL MANAGEMENT
OFFICE OF WATER RESOURCES
FRESHWATER WETLANDS PROGRAM
APPROVED WETLANDS CONDITIONS
AS SPECIFIED IN THE LETTER OF APPROVAL
DATED MAR 26 2008 FILE # 07-0463
NO CHANGES ALLOWED WITHOUT PRIOR APPROVAL
APPROVED PLANS MUST BE AT CONSTRUCTION SITE

Matthew D. Wencel

TODD A. RAVENELLE
No. 5928
REGISTERED PROFESSIONAL ENGINEER



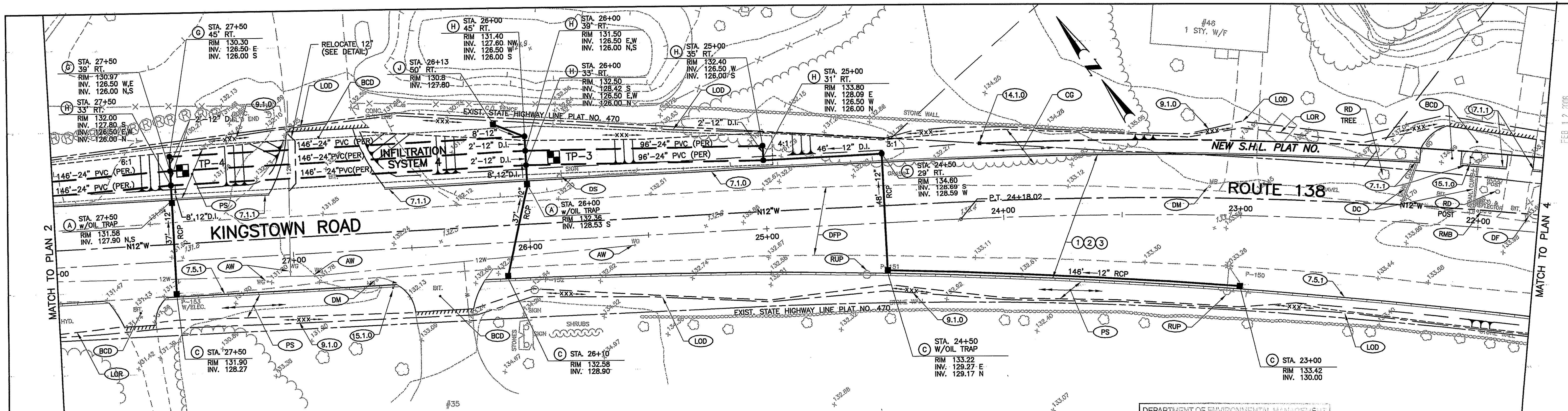
REVISIONS		
NO.	DATE	BY
1	2/11/08	T.A.R.

RICHMOND COMMONS
VILLAGE CENTER
IMPROVEMENTS TO
KINGSTOWN ROAD
RICHMOND, RHODE ISLAND
GENERAL PLAN 2
STA. 28+00 TO STA. 33+00

SHEET OF 53 DATE SCALE AS NOTED
R.I.D.E.M. SHEET NO. 7 OF 18

GRI Gordon R. Archibald, Inc.
Professional Engineers
Pawtucket, RI

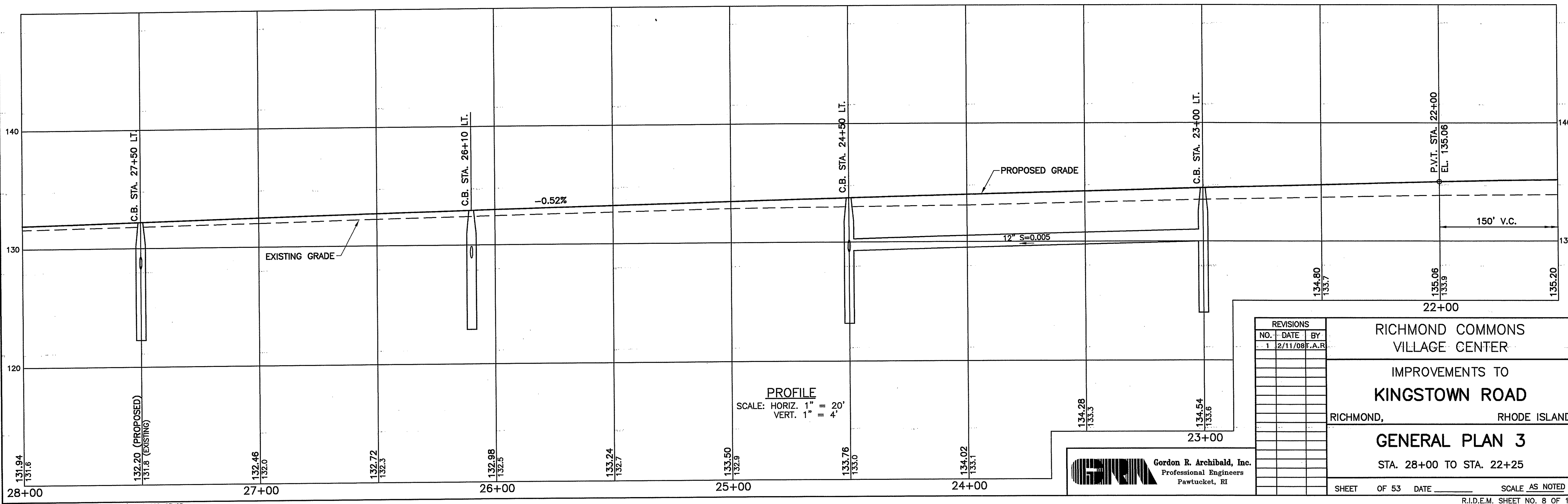
FEB 12 2008



PLAN
SCALE: 1" = 20'

DEPARTMENT OF ENVIRONMENTAL MANAGEMENT
OFFICE OF WATER RESOURCES
FRESHWATER WETLANDS PROGRAM
APPROVED WITH CONDITIONS
AS SPECIFIED IN THE LETTER OF APPROVAL
DATED MAR 26 2008 FILE # 07-0463
NO CHANGES ALLOWED WITHOUT PRIOR APPROVAL
APPROVED PLANS MUST BE AT CONSTRUCTION SITE

TODD A. RAVENELLE
REGISTERED PROFESSIONAL ENGINEER
5928

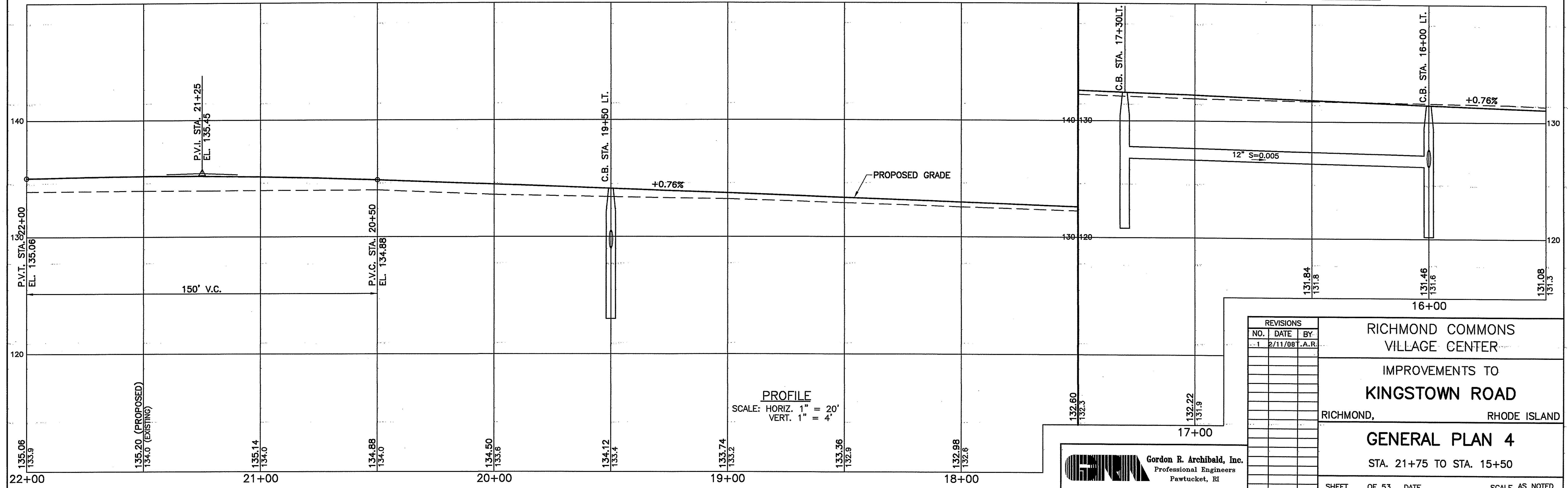
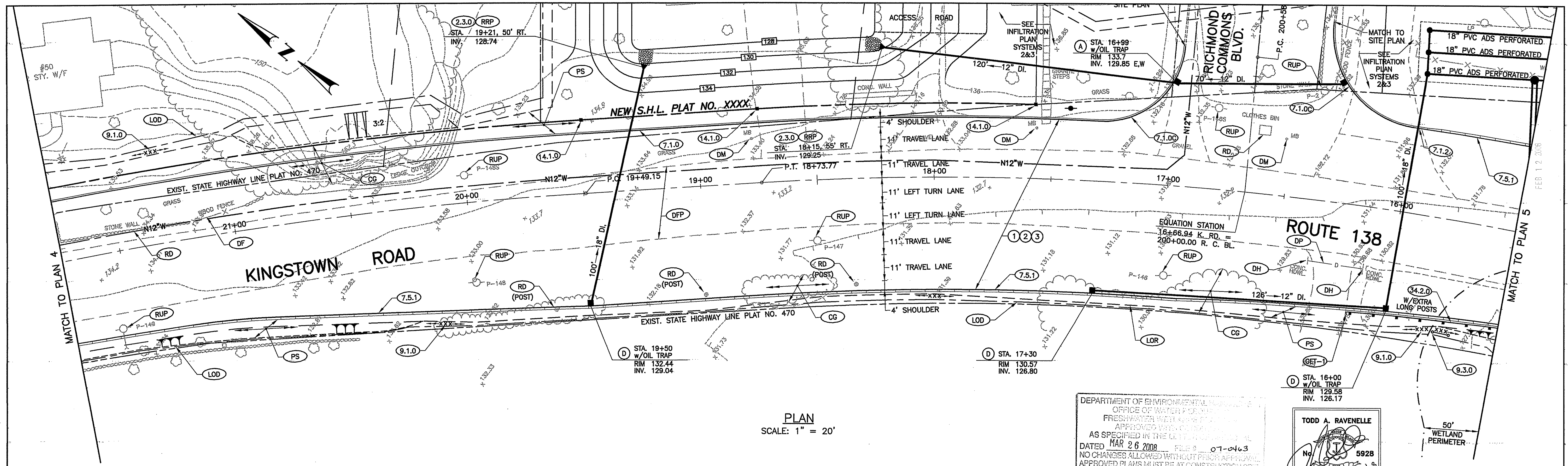


PROFILE
SCALE: HORIZ. 1" = 20'
VERT. 1" = 4'

REVISIONS		
NO.	DATE	BY
1	2/11/08	F.A.R.

RICHMOND COMMONS
VILLAGE CENTER
IMPROVEMENTS TO
KINGSTOWN ROAD
RICHMOND, RHODE ISLAND
GENERAL PLAN 3
STA. 28+00 TO STA. 22+25

Gordon R. Archibald, Inc.
Professional Engineers
Pawtucket, RI

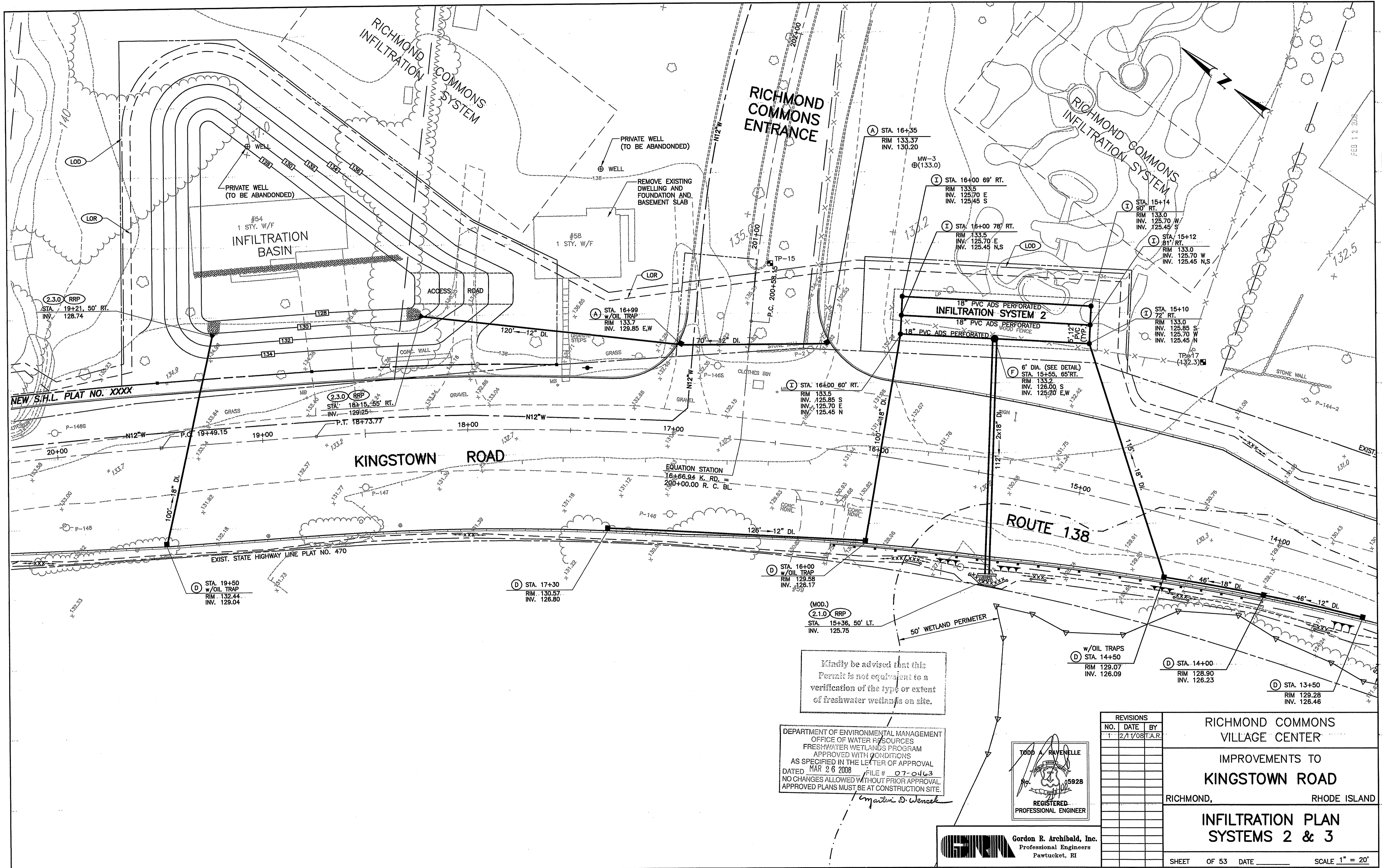


REVISIONS		
NO.	DATE	BY
-1	2/11/08	A.R.

RICHMOND COMMONS VILLAGE CENTER
IMPROVEMENTS TO KINGSTOWN ROAD
RICHMOND, RHODE ISLAND
GENERAL PLAN 4
STA. 21+75 TO STA. 15+50
SHEET OF 53 DATE _____ SCALE AS NOTED

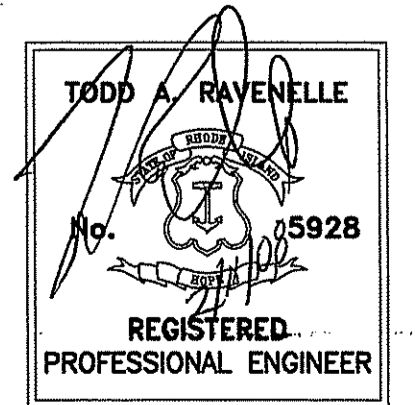
G.R.A. Gordon R. Archibald, Inc.
Professional Engineers
Pawtucket, RI

F:\FILES\CAD\1112\1112_HIGHWAY_PLANS\1112_009_GEN04



Kindly be advised that this Permit is not equivalent to a verification of the type or extent of freshwater wetlands on site.

DEPARTMENT OF ENVIRONMENTAL MANAGEMENT
 OFFICE OF WATER RESOURCES
 FRESHWATER WETLANDS PROGRAM
 APPROVED WITH CONDITIONS
 AS SPECIFIED IN THE LETTER OF APPROVAL
 DATED MAR 26 2008 FILE # 07-0463
 NO CHANGES ALLOWED WITHOUT PRIOR APPROVAL
 APPROVED PLANS MUST BE AT CONSTRUCTION SITE.



GORDON R. ARCHIBALD, INC.
 Professional Engineers
 Pawtucket, RI

REVISIONS		
NO.	DATE	BY
1	2/17/08	T.A.R.

RICHMOND COMMONS VILLAGE CENTER

IMPROVEMENTS TO KINGSTOWN ROAD

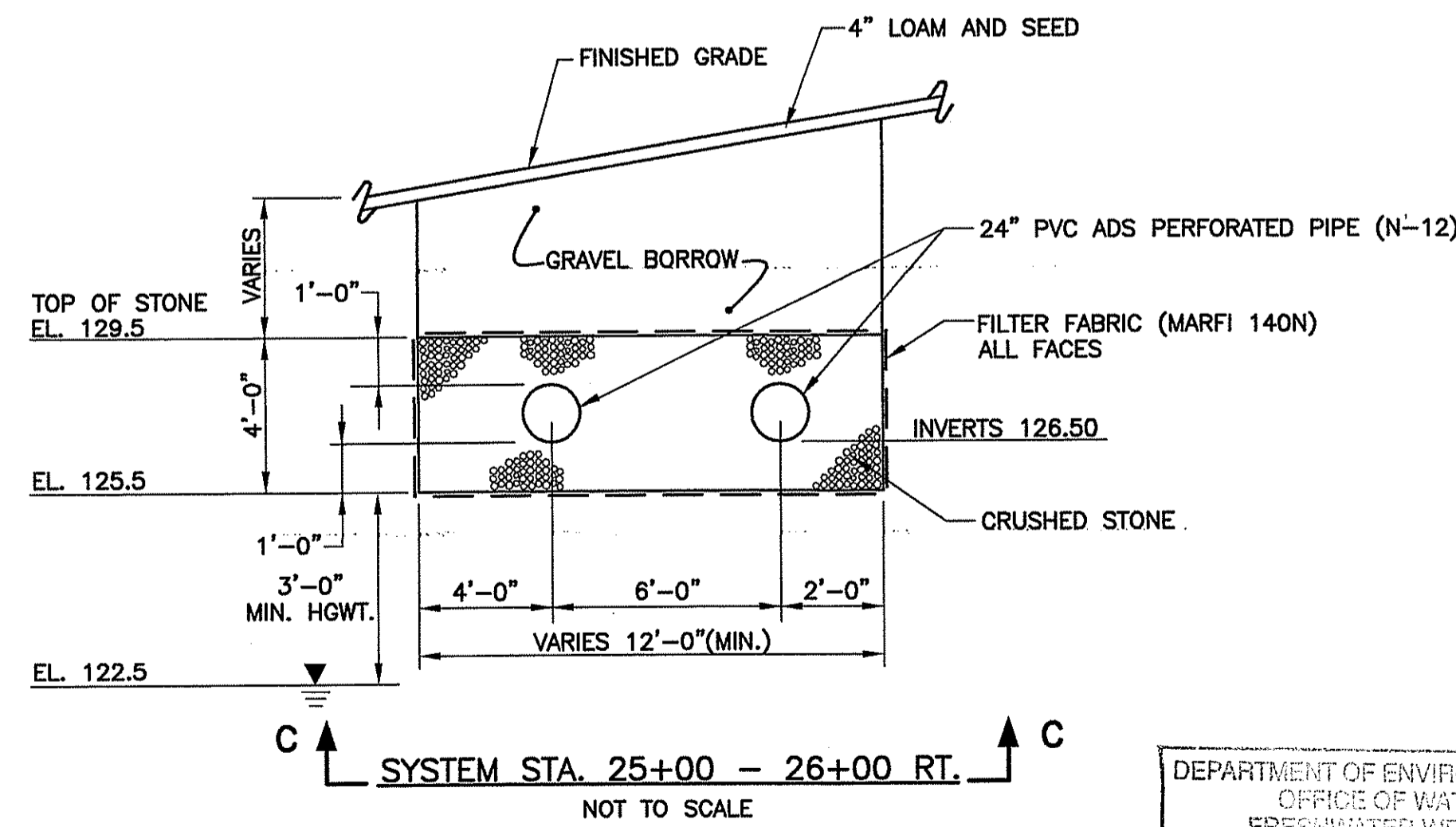
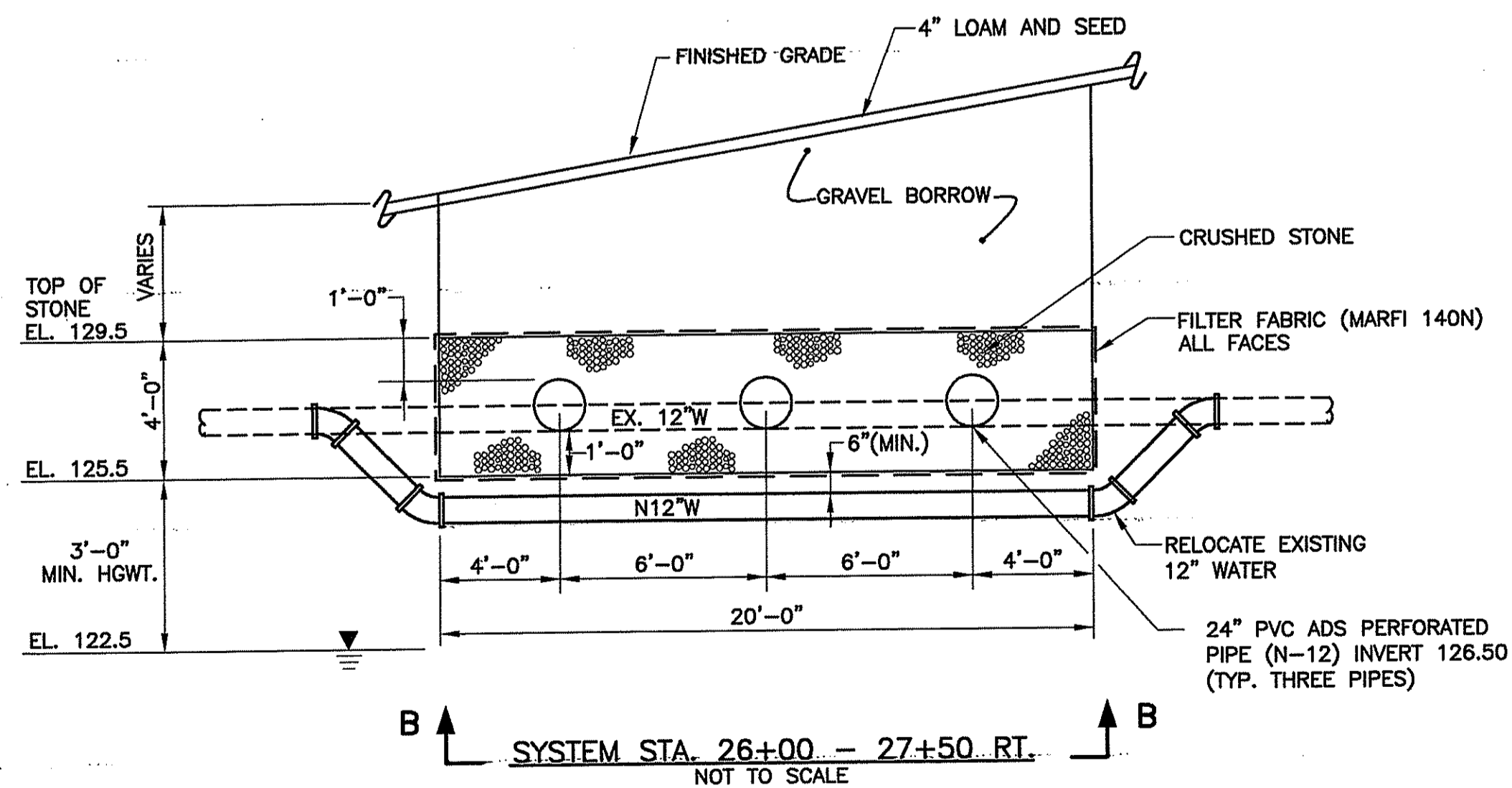
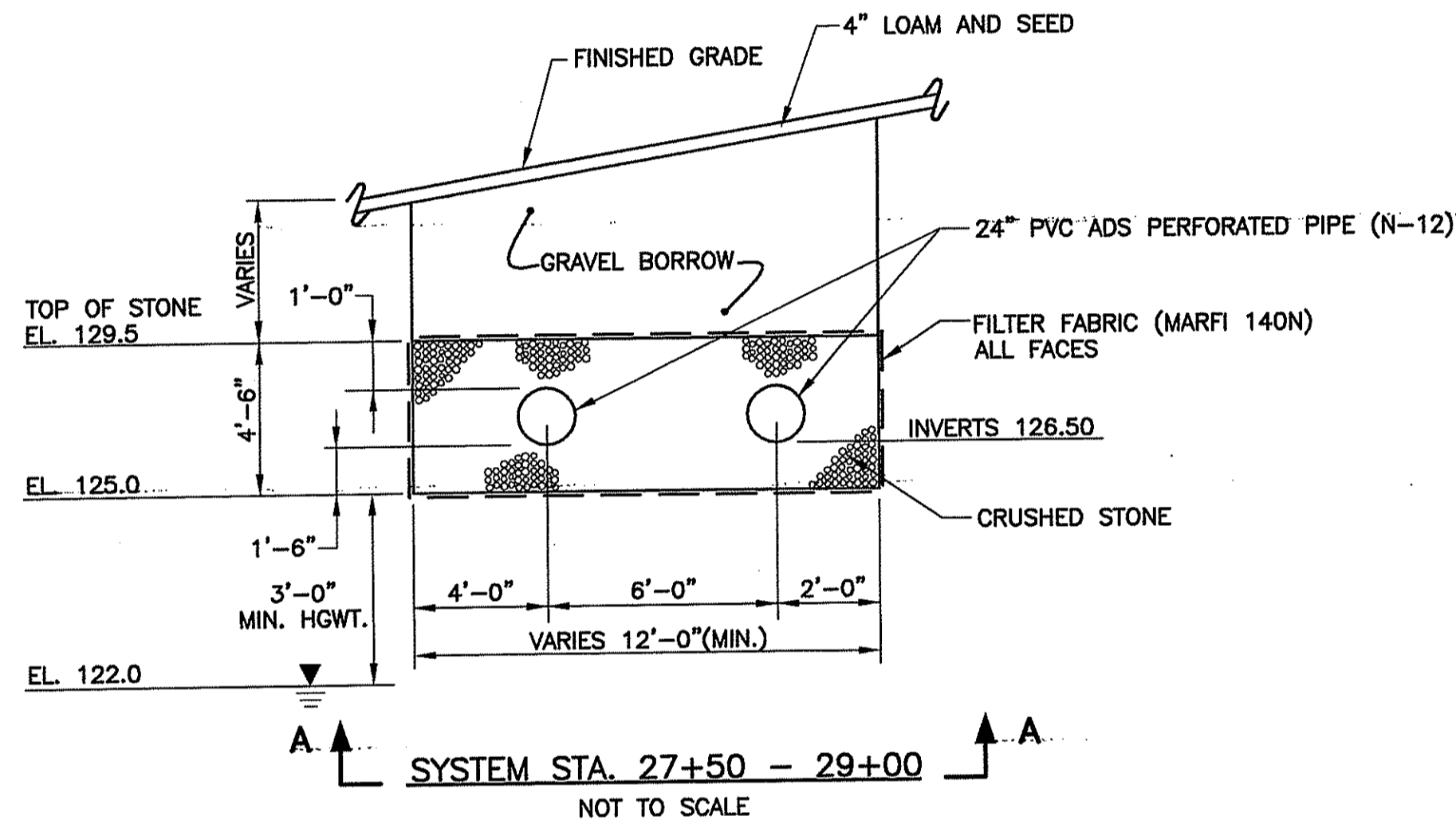
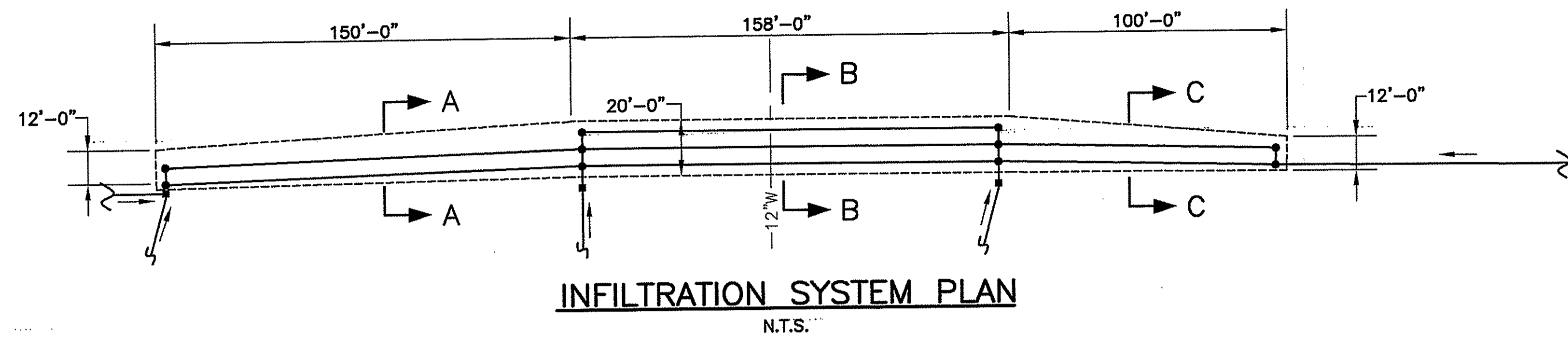
RICHMOND, RHODE ISLAND

INFILTRATION PLAN SYSTEMS 2 & 3

SHEET OF 53 DATE _____ SCALE 1" = 20'

R.I.D.E.M. SHEET NO. 13 OF 18

F:\FILES\CAD\11112\HIGHWAY_PLANS\1112_013_B601



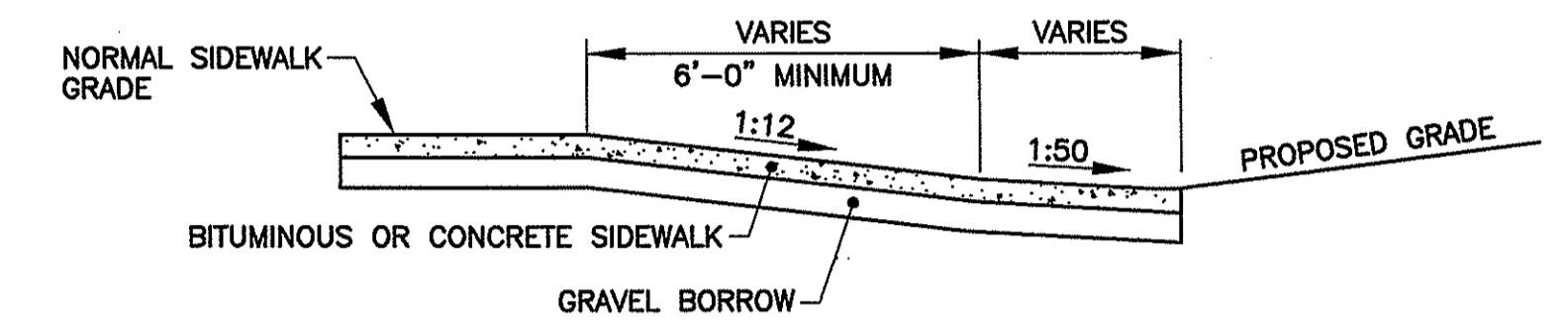
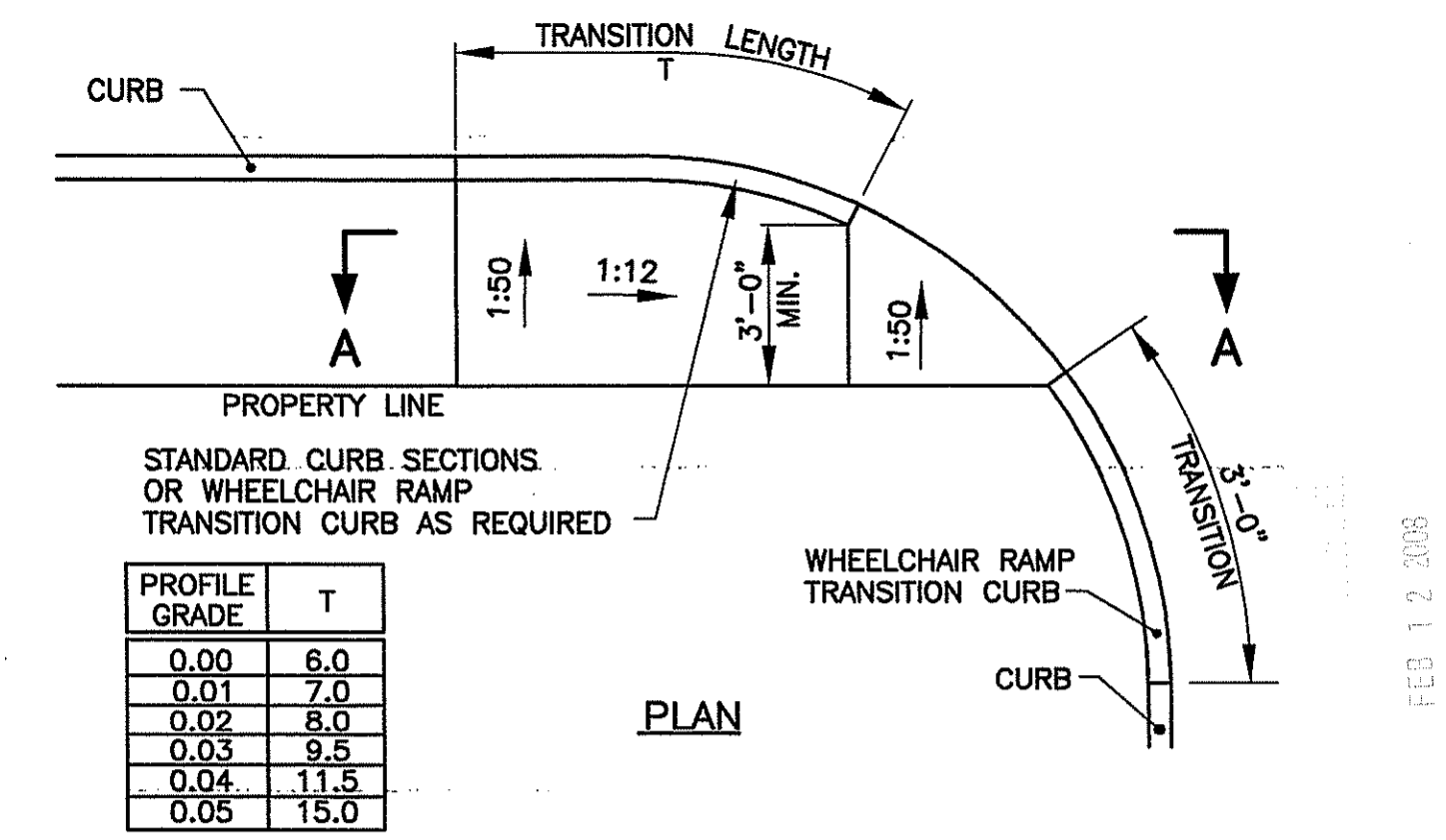
INFILTRATION SYSTEM 4

MAINTENANCE AND INSPECTION NOTES FOR SUBSURFACE INFILTRATION SYSTEMS

- ALL DRY WELLS AND CATCH BASINS DISCHARGING TO SUBSURFACE INFILTRATION SYSTEMS SHALL BE INSPECTED AND CLEANED ON AN SEMI-ANNUAL BASIS. THIS SHALL INCLUDE THE REMOVAL OF ALL ACCUMULATED SEDIMENTS, MAINTENANCE OF OIL-WATER SEPARATORS, AND OTHER WORK AS NECESSARY TO ENSURE THE PROPER FUNCTIONING OF THE INFILTRATION SYSTEM. MAINTENANCE OF SUBSURFACE INFILTRATION SYSTEMS SHALL BE THE RESPONSIBILITY OF THE OWNER OF THE PROPERTY.
- THE OWNER OF THE PROPERTY SHALL BE RESPONSIBLE FOR ALL REPAIRS, REPLACEMENTS, AND OTHER WORK NECESSARY TO MAINTAIN THE PROPER FUNCTIONING OF SUBSURFACE INFILTRATION SYSTEMS. SHOULD THE SYSTEM BECOME CLOG IN THE LONG-TERM AND FAIL TO OPERATE THE OWNER SHALL BE REQUIRED TO EXCAVATE AND REPLACE THE SYSTEM.
- AN INFILTRATION SYSTEMS MAINTENANCE REPORT WHICH DETAILS ANY OPERATIONAL PROBLEMS AND SPILL/DUMPING INCIDENTS SHALL BE SUBMITTED TO THE RIDEM UNDERGROUND INJECTION CONTROL (UIC) PROGRAM ON AN ANNUAL BASIS. THE MAINTENANCE REPORT SHALL BE DUE BY THE LAST DAY OF APRIL FOR EVERY YEAR THE DISPOSAL SYSTEM IS UTILIZED.
- ANY INADVERTENT OR DELIBERATE DISCHARGE OF WASTE OIL OR ANY OTHER POLLUTANT TO THE SUBSURFACE INFILTRATION SYSTEMS REQUIRES IMMEDIATE NOTIFICATION OF THE UIC PROGRAM.
- ANY INCIDENT OF GROUNDWATER CONTAMINATION RESULTING FROM THE IMPROPER DISCHARGE OF CONTAMINANTS TO THE INFILTRATION SYSTEM SHALL BE THE RESPONSIBILITY OF THE PROPERTY OWNER. THE RIDEM WILL REQUIRE THE PROPERTY OWNER TO REMEDIATE ANY SUCH INCIDENTS THAT MAY ADVERSELY IMPACT THE QUALITY OF GROUNDWATER.
- UPON TRANSFER OF THE PROPERTY, THE FUTURE OWNER SHALL BE INFORMED AS TO THE LEGAL RESPONSIBILITY OF OPERATING THE INFILTRATION SYSTEM, AS INDICATED.

INFILTRATION NOTES:

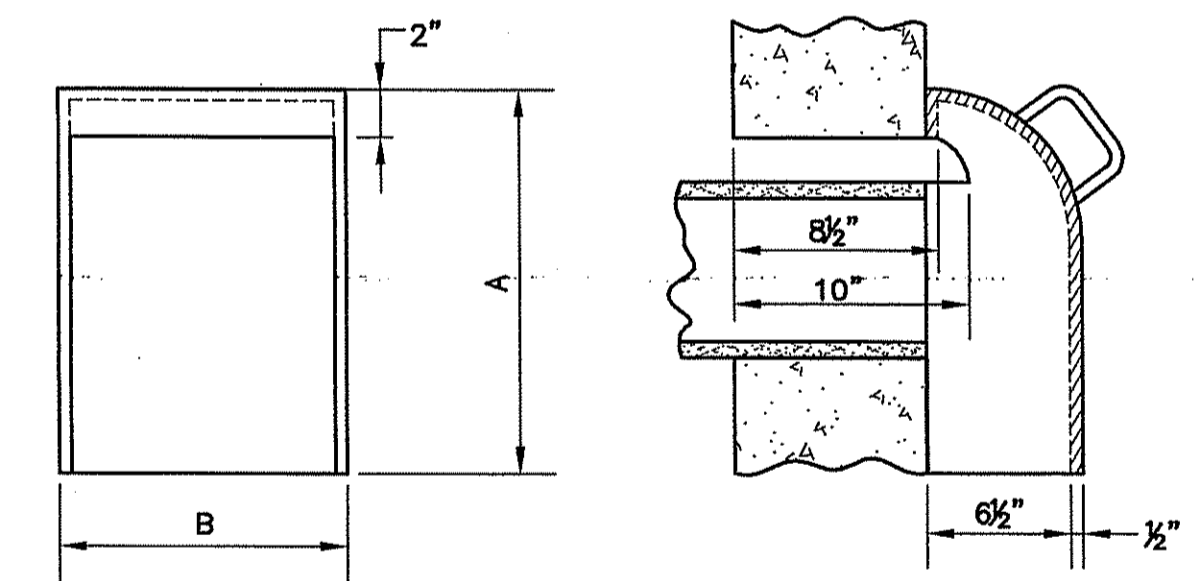
- FILTER STONE SHALL MEET THE REQUIREMENTS OF SECTION M.01.07 OF THE R.I. STANDARD SPECIFICATIONS.
- FILTER FABRIC SHALL MEET THE REQUIREMENTS OF SECTION M.18.20 OF THE R.I. STANDARD SPECIFICATIONS.
- GRAVEL BORROW SHALL MEET THE REQUIREMENTS OF SECTION M.01.02 OF THE R.I. STANDARD SPECIFICATIONS.
- THE SOIL BELOW THE INFILTRATION SYSTEM IN THE LOCATION FOR THE PROPOSED INFILTRATION SYSTEM SHOULD NOT BE COMPACTED BY CONSTRUCTION RELATED ACTIVITIES. THIS WILL NECESSITATE ROPING OFF THE AREAS OF PROPOSED SYSTEMS TO PREVENT MACHINERY FROM COMPACTING THE SOILS.



NOTES:

- SHALL BE IN ACCORDANCE WITH SECTION 904 OF THE R.I. STANDARD SPECIFICATIONS.
- DRAINAGE FACILITIES ARE TO BE LOCATED UP-GRADE OF ALL WHEELCHAIR RAMPS.
- LOCATION OF WHEELCHAIR RAMPS IS AS SHOWN ON CONTRACT DRAWINGS.
- ALL REQUIRED CUTTING OF CURB PIECES TO BE PAID FOR UNDER COST OF CURB.
- WHERE THE ROAD PROFILE EXCEEDS 5% THE TRANSITION LENGTH (T) SHALL BE EIGHTEEN FEET (18'-0").
- THE ENTRANCE OF THE WHEELCHAIR RAMP SHALL BE FLUSH WITH THE ROADWAY.
- MINIMUM LENGTH OF STRAIGHT OR CIRCULAR FILLER PIECES TO BE 3'-0" (GREATER LENGTHS PREFERRED).
- AN UNOBSTRUCTED PATH OF TRAVEL WITH A MINIMUM WIDTH OF 3'-0" SHALL BE MAINTAINED.

WHEELCHAIR RAMP FOR LIMITED RIGHT-OF-WAY AREAS
NOT TO SCALE



NEENAH FOUNDRY COMPANY

CATALOG NO.	DIMENSIONS IN INCHES		SETTING METHOD	NOTES
	A	B		
R-3701-6	12	12	to 6	ON 2 HOOKS
R-3701-12	22	16	12	ON 2 HOOKS
R-3701-18	28	22	18	ON 2 HOOKS

CATCH BASIN OIL TRAPS
NOT TO SCALE

DEPARTMENT OF ENVIRONMENTAL MANAGEMENT
OFFICE OF WATER RESOURCES
FRESHWATER WETLANDS PROGRAM
APPROVED WITH CONDITIONS
AS SPECIFIED IN THE LETTER OF APPROVAL
DATED MAR 26 2008 FILE # 07-0463
NO CHANGES ALLOWED WITHOUT PRIOR APPROVAL
APPROVED PLANS MUST BE AT CONSTRUCTION SITE.

Christopher D. Wencel

TODD A. RAVENELLE
REGISTERED PROFESSIONAL ENGINEER
5928

Gordon R. Archibald, Inc.
Professional Engineers
Pawtucket, RI

REVISIONS		
NO.	DATE	BY
1	2/17/08	T.A.R.

RICHMOND COMMONS VILLAGE CENTER

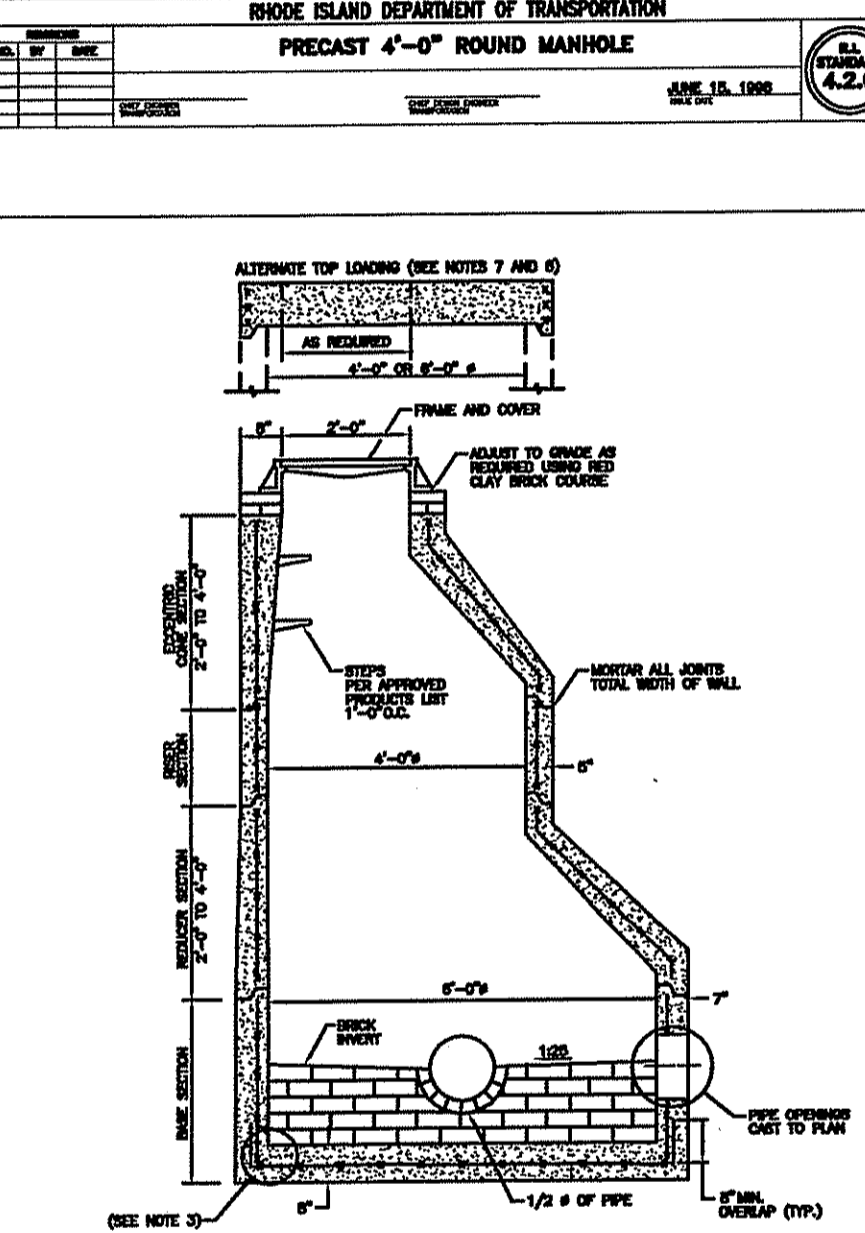
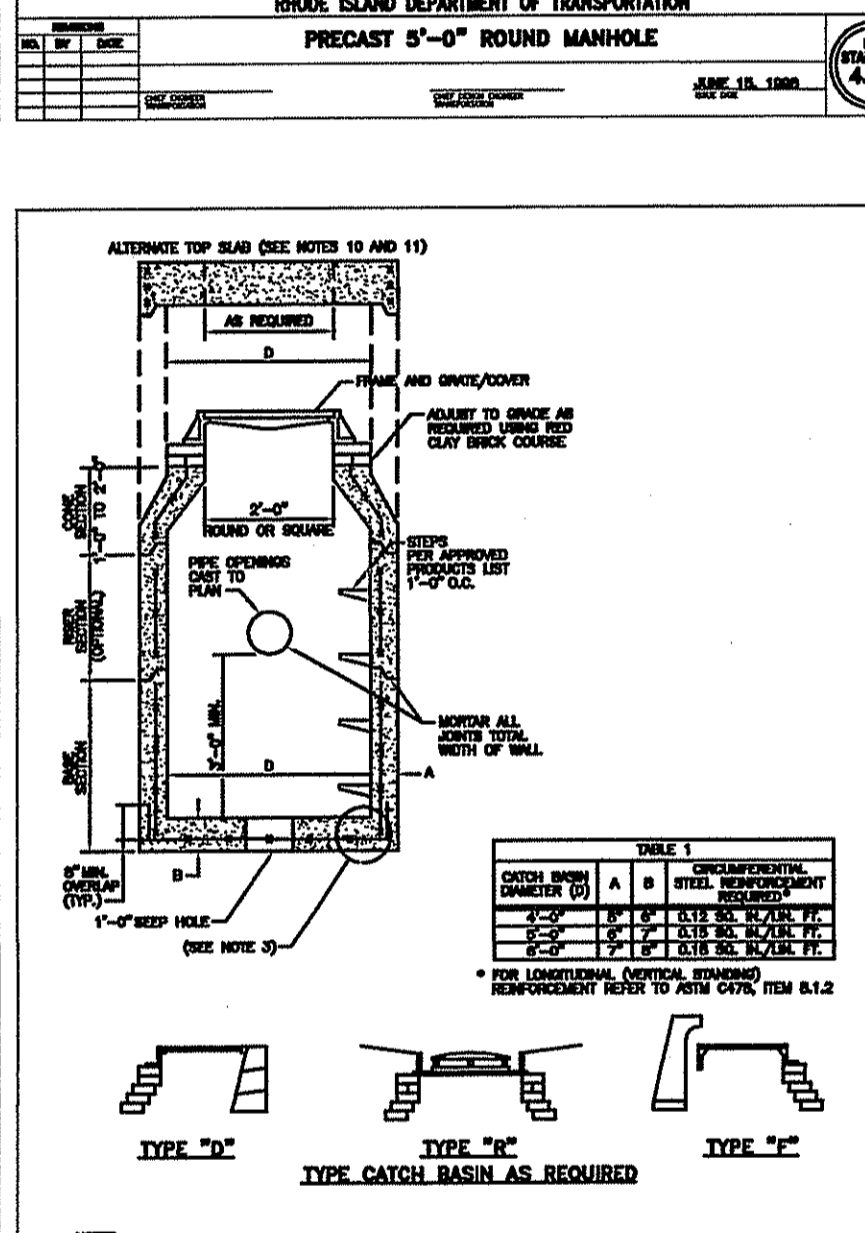
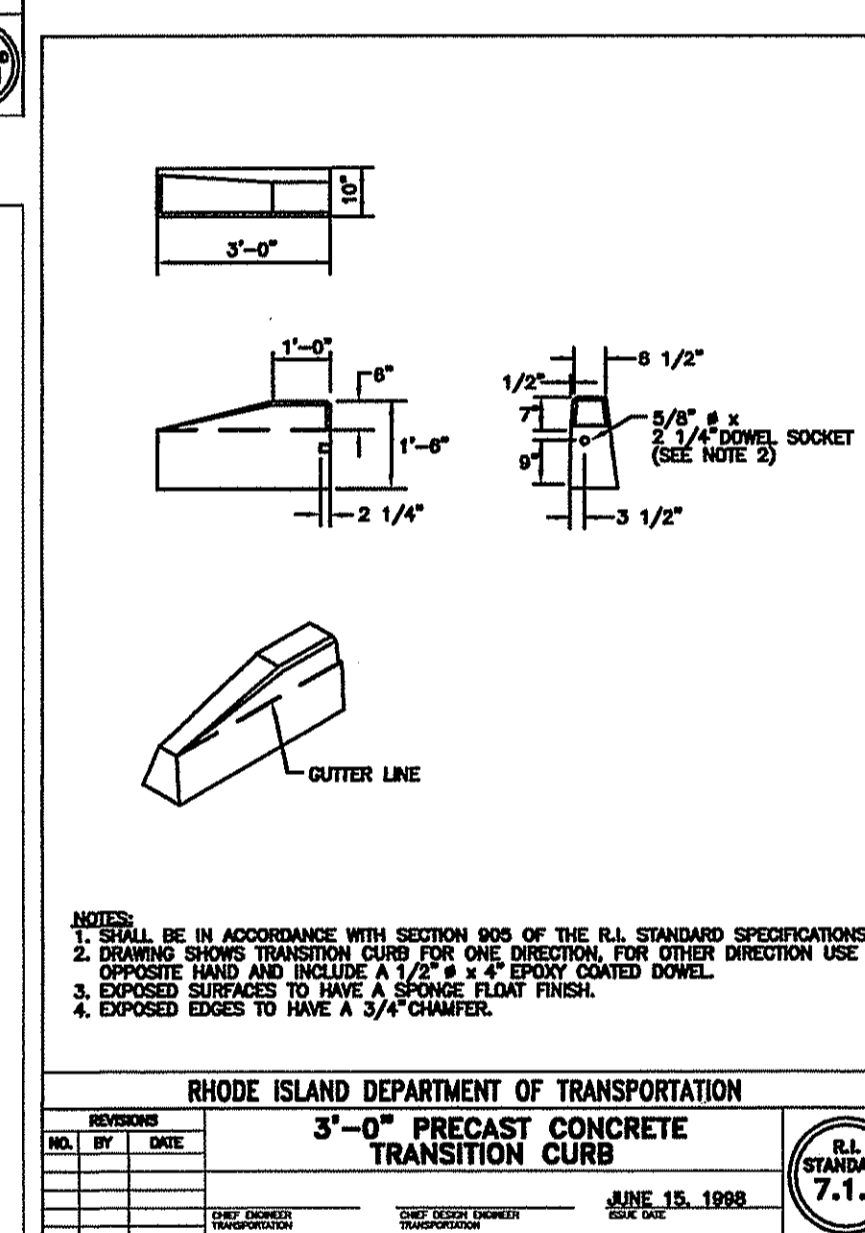
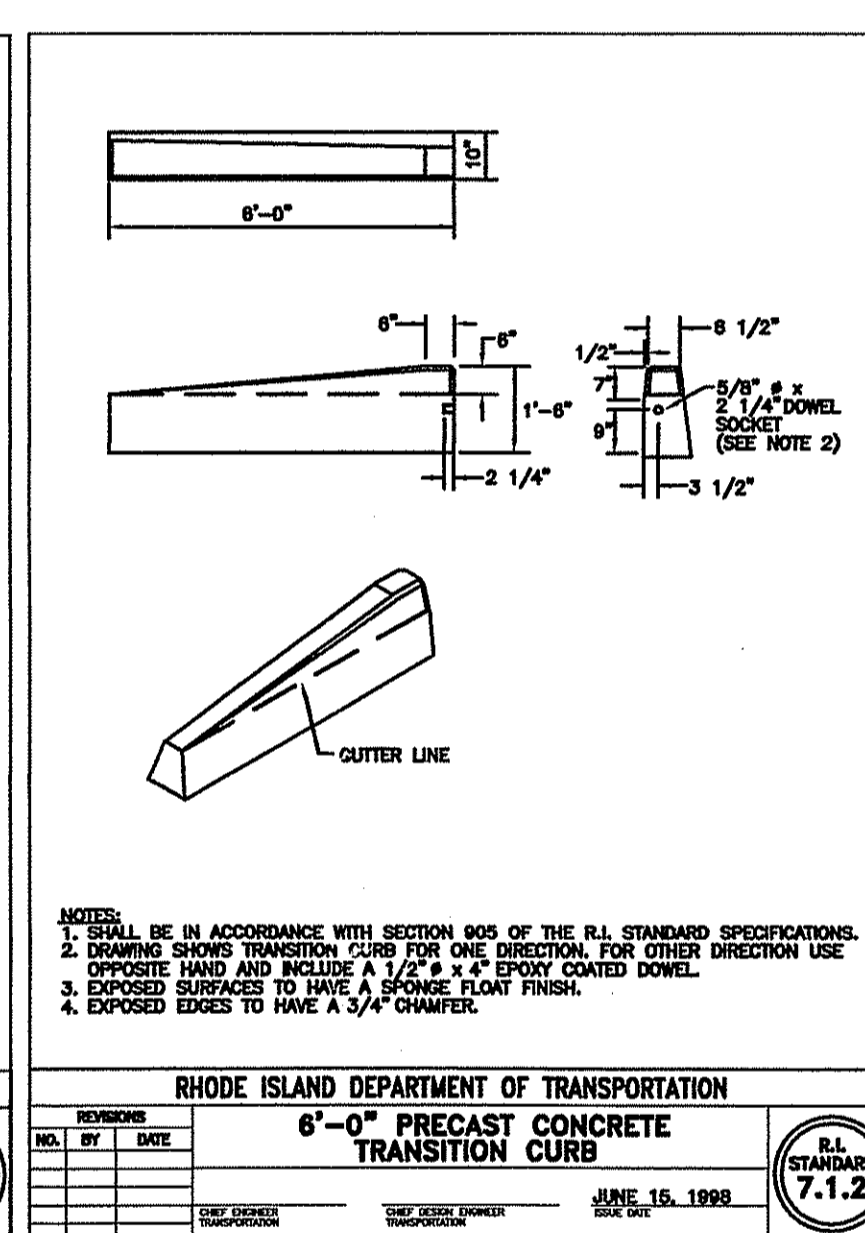
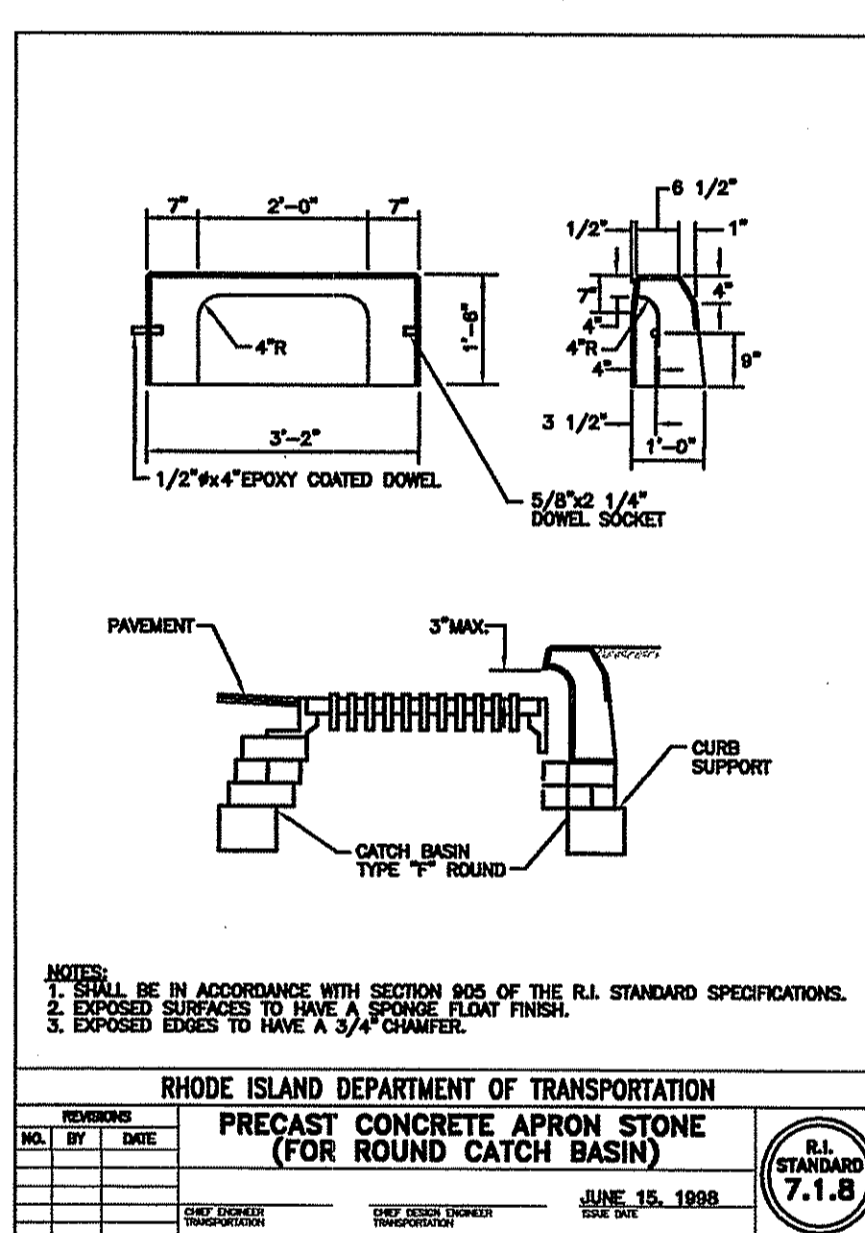
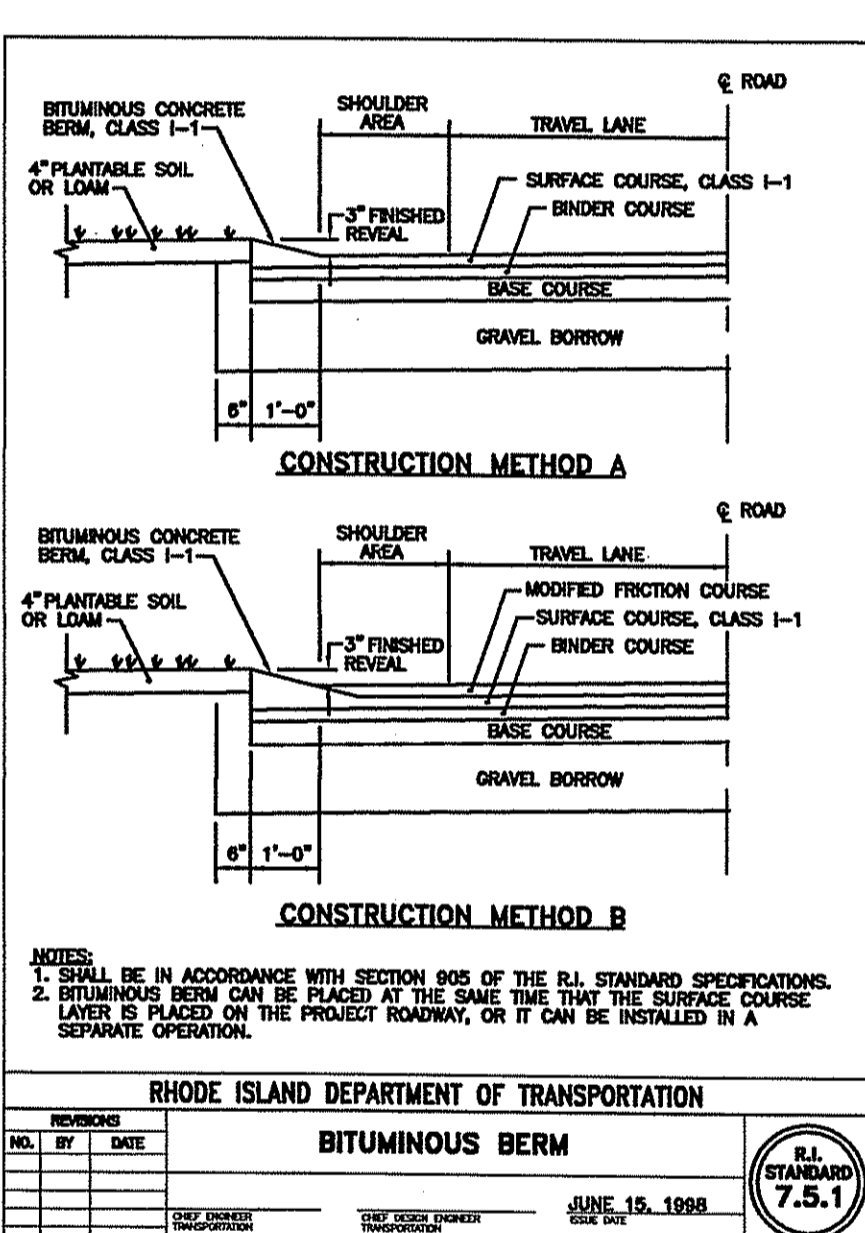
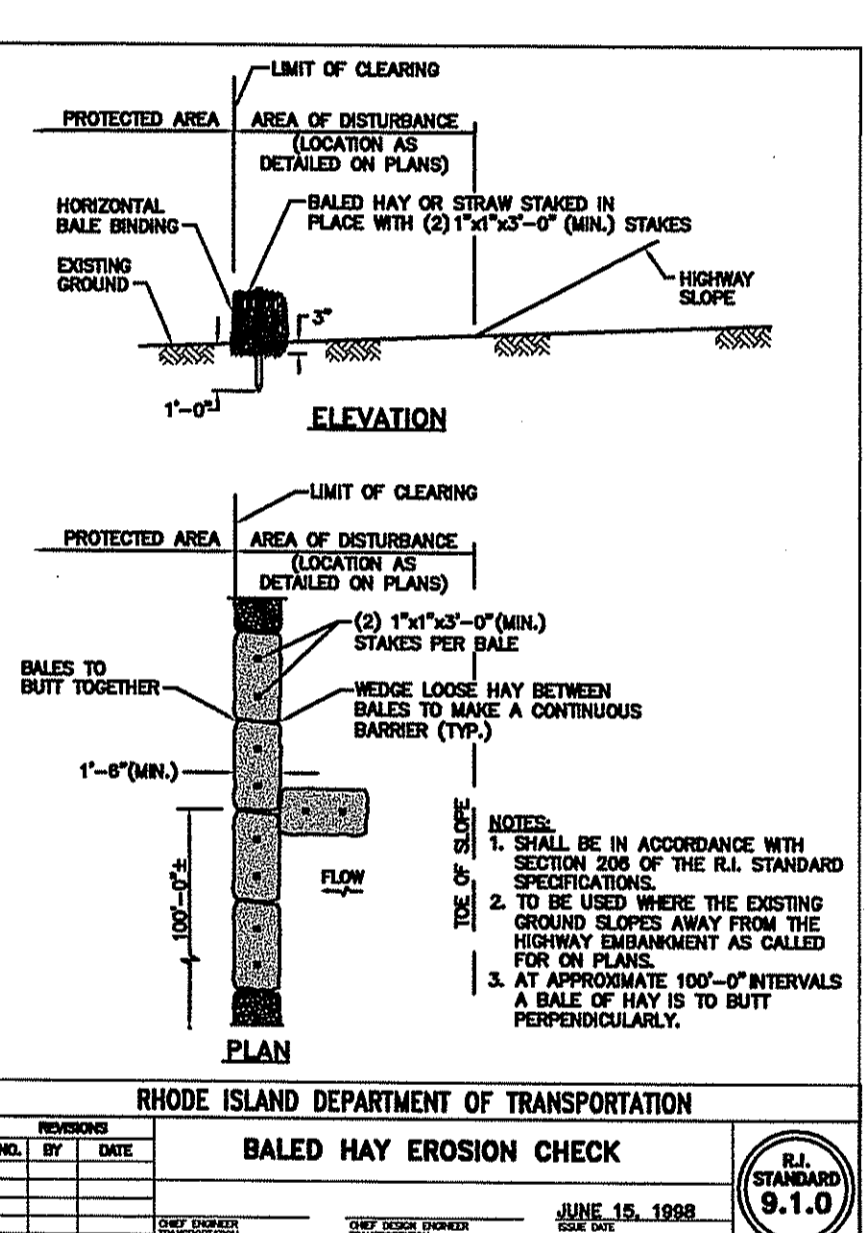
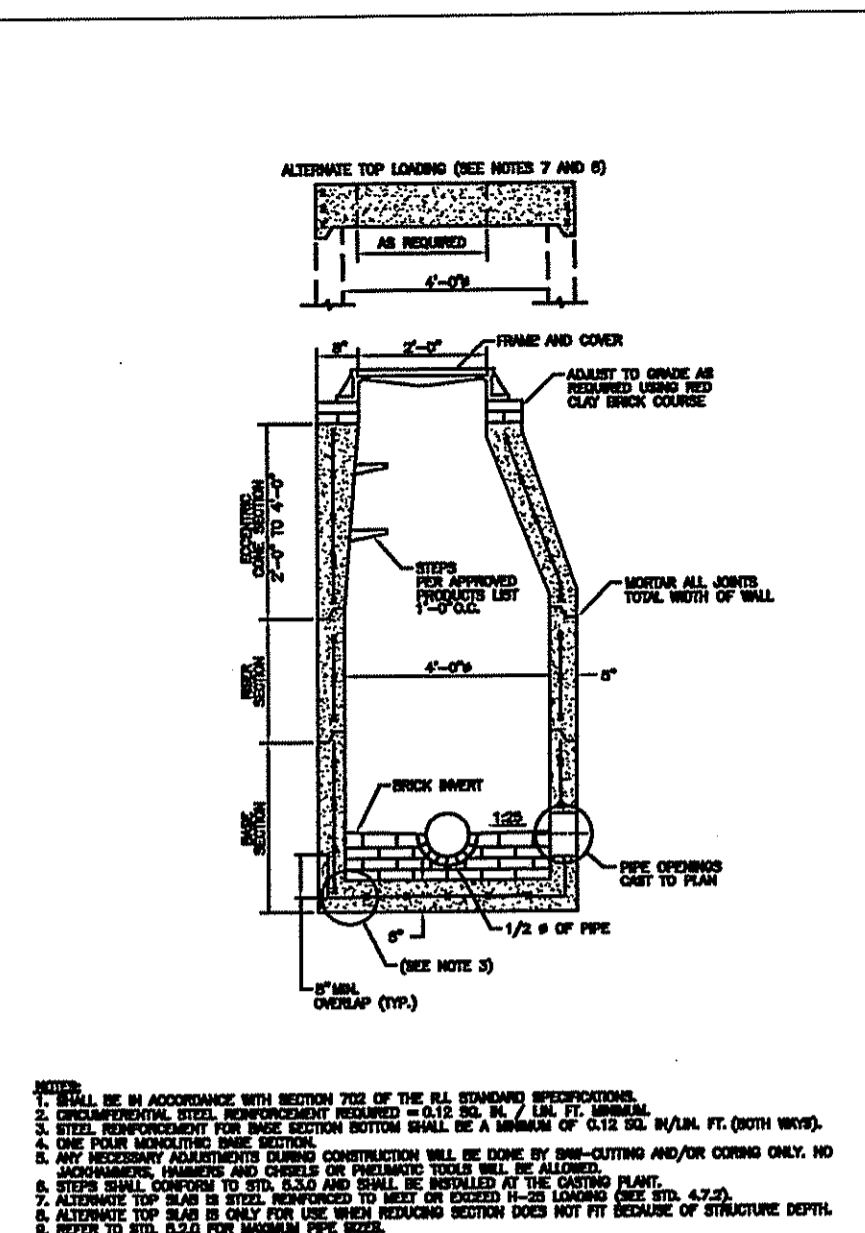
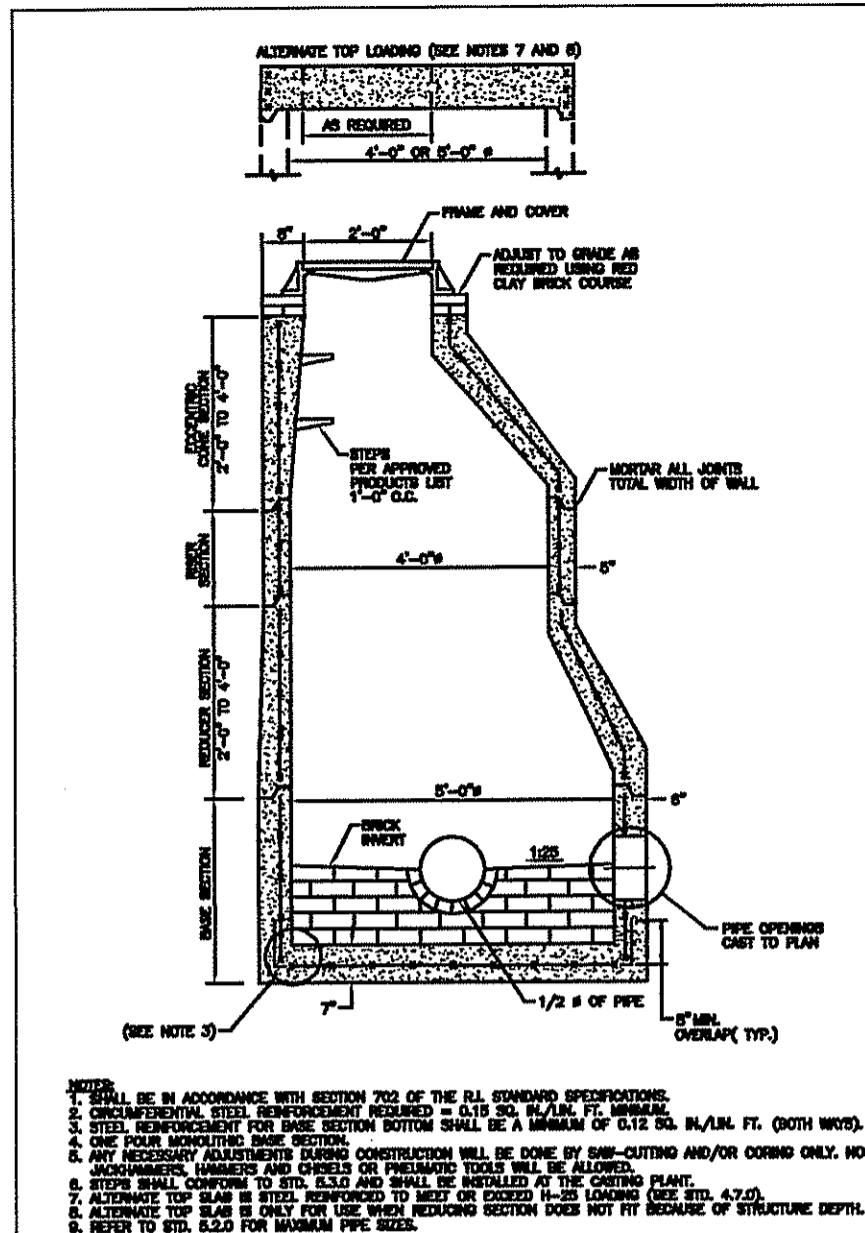
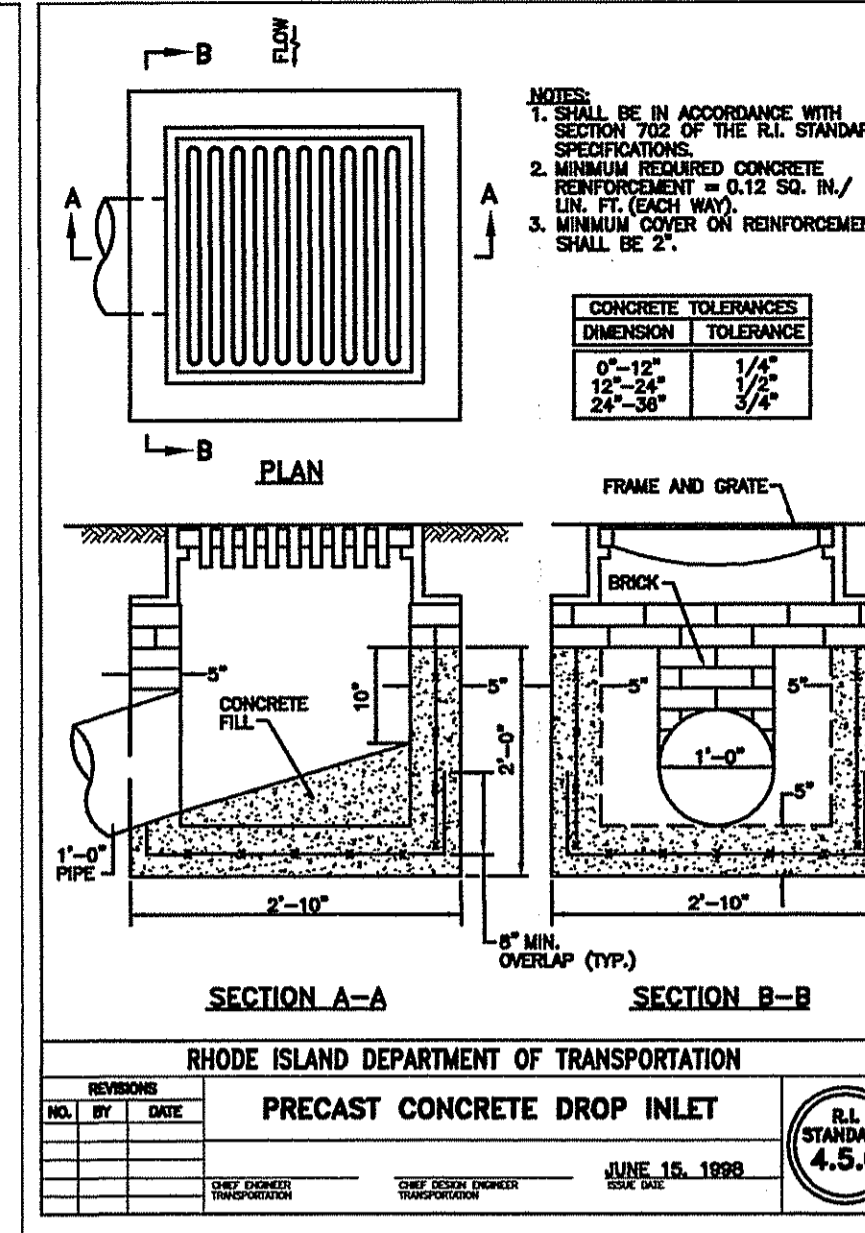
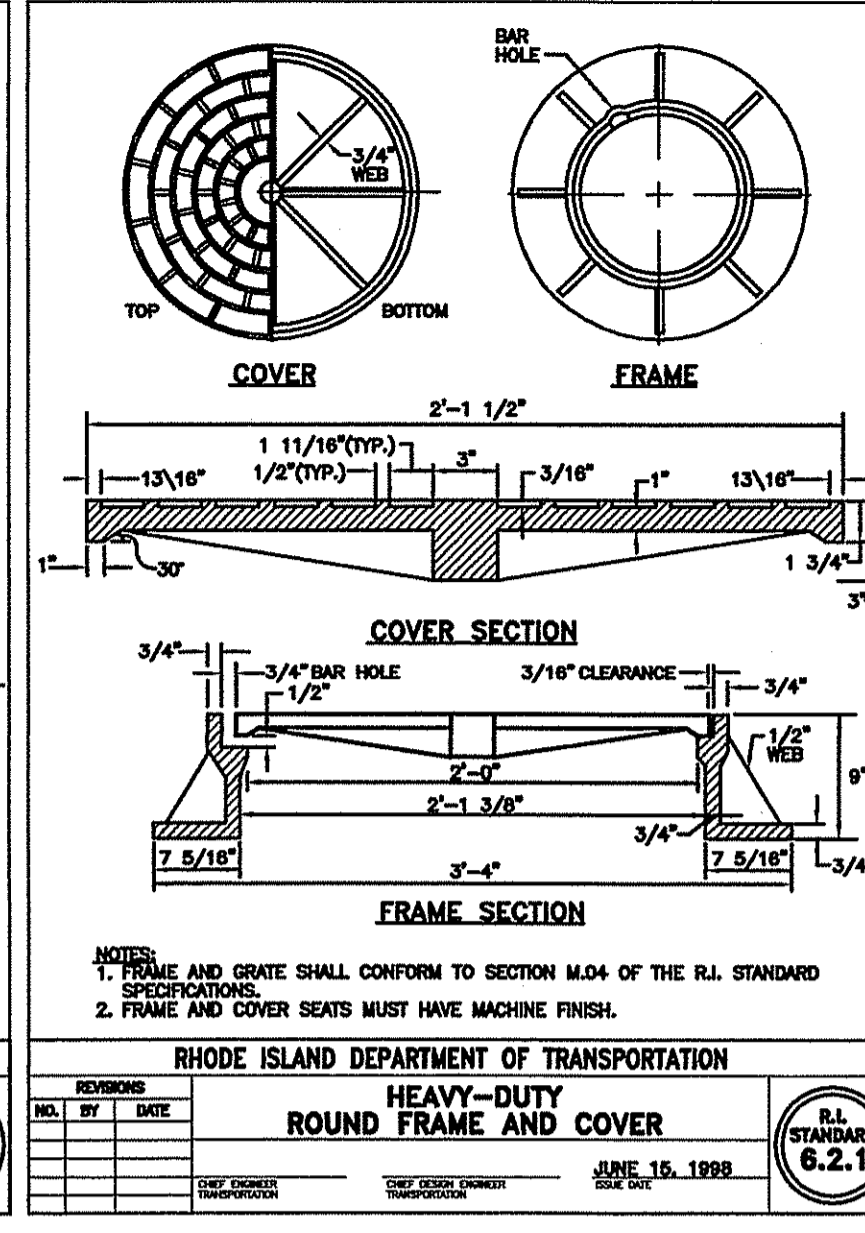
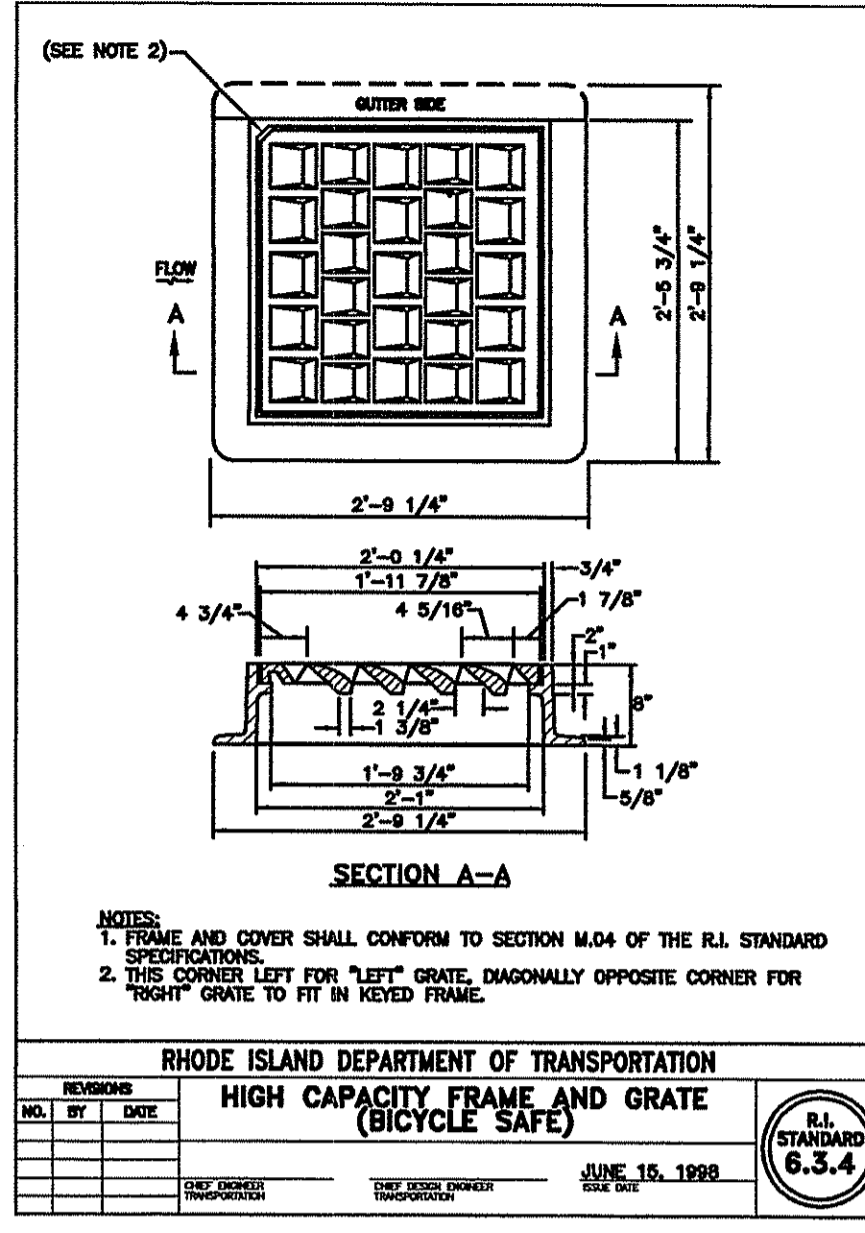
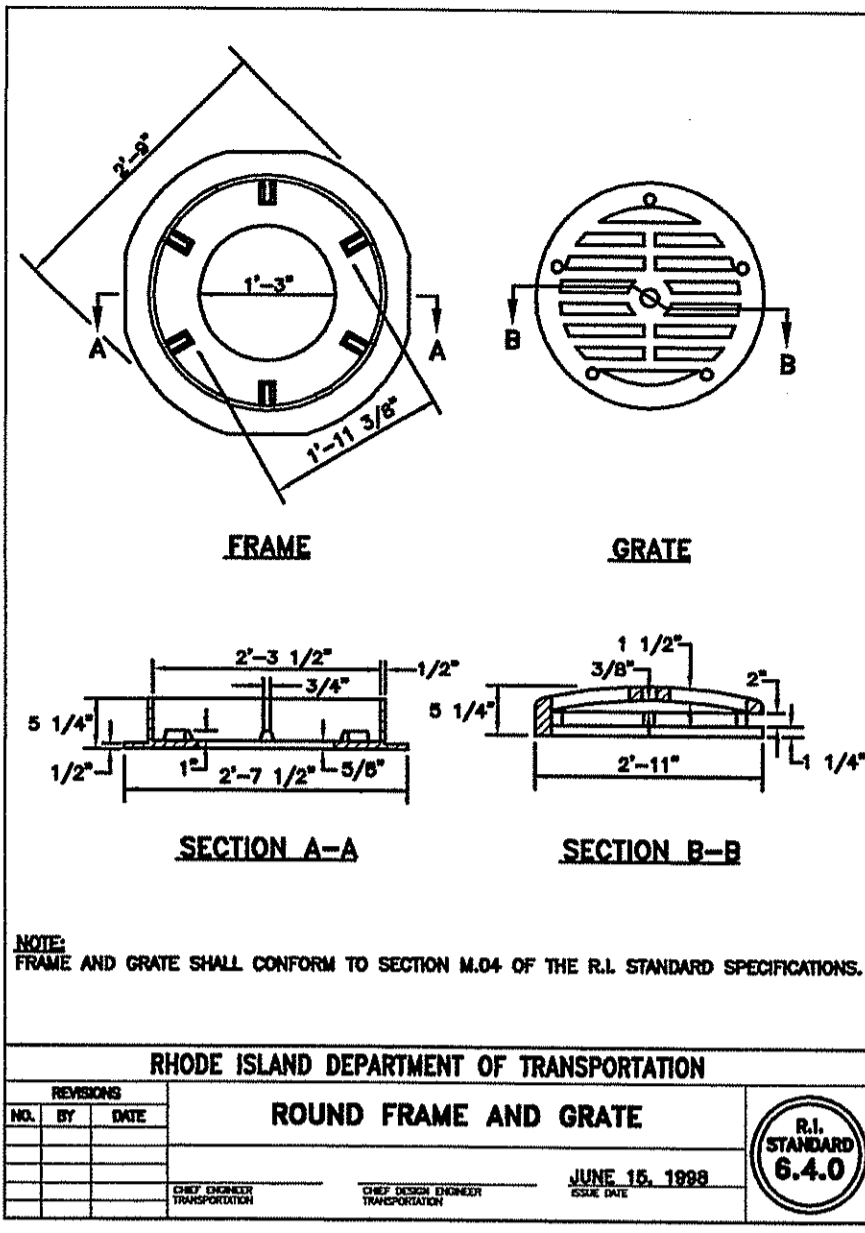
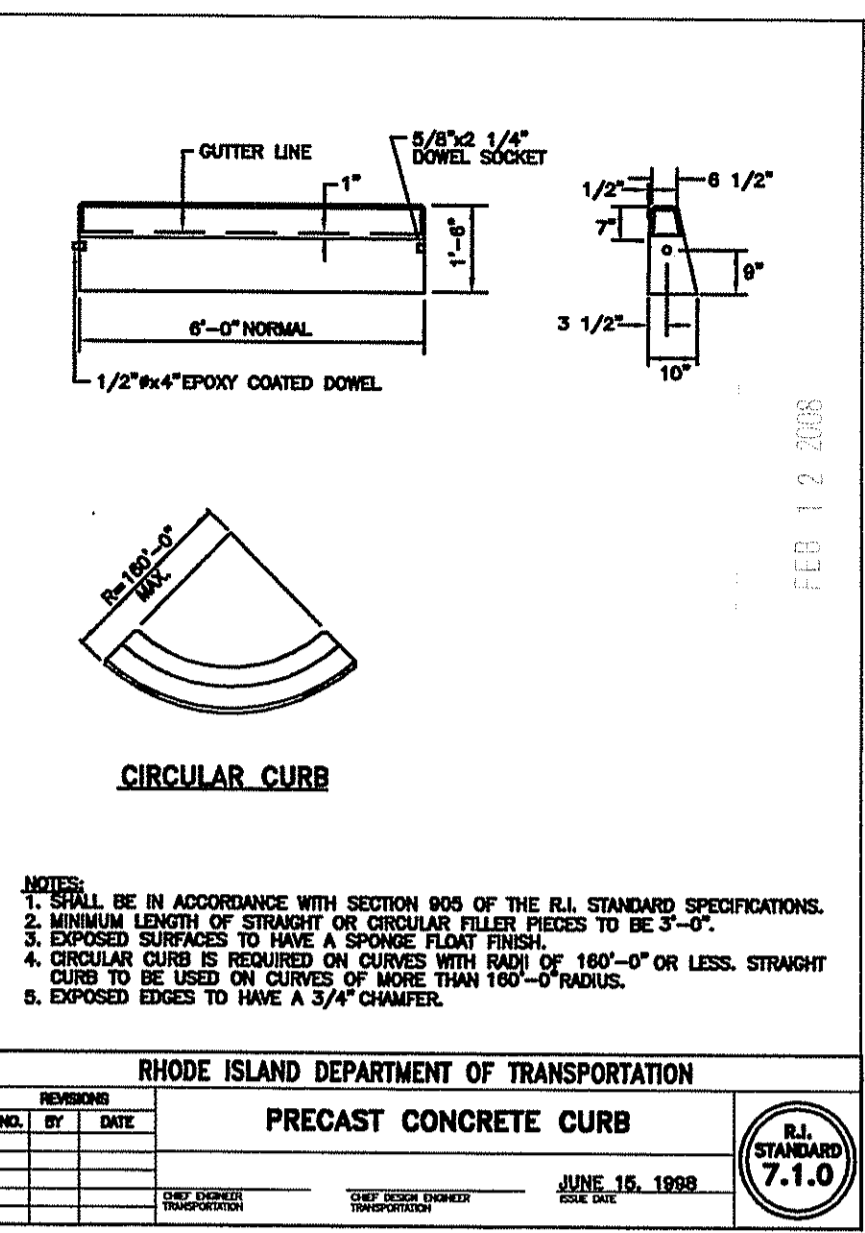
IMPROVEMENTS TO KINGSTOWN ROAD

RICHMOND, RHODE ISLAND

MISCELLANEOUS DETAILS - 2

SHEET OF 53 DATE _____ SCALE AS SHOWN

R.I.D.E.M. SHEET NO. 16 OF 18



DEPARTMENT OF ENVIRONMENTAL MANAGEMENT
 OFFICE OF WATER RESOURCES
 FRESHWATER WETLANDS PROGRAM
 APPROVED WITH CONDITIONS
 AS SPECIFIED IN THE LETTER OF APPROVAL
 DATED MAR 26 2008 FILE # 07-043
 NO CHANGES ALLOWED WITHOUT PRIOR APPROVAL
 APPROVED PLANS MUST BE AT CONSTRUCTION SITE

Matthew D. Wencel

RICHMOND COMMONS VILLAGE CENTER
IMPROVEMENTS TO KINGSTOWN ROAD
 RICHMOND, RHODE ISLAND

RHODE ISLAND STANDARD DETAILS - 1

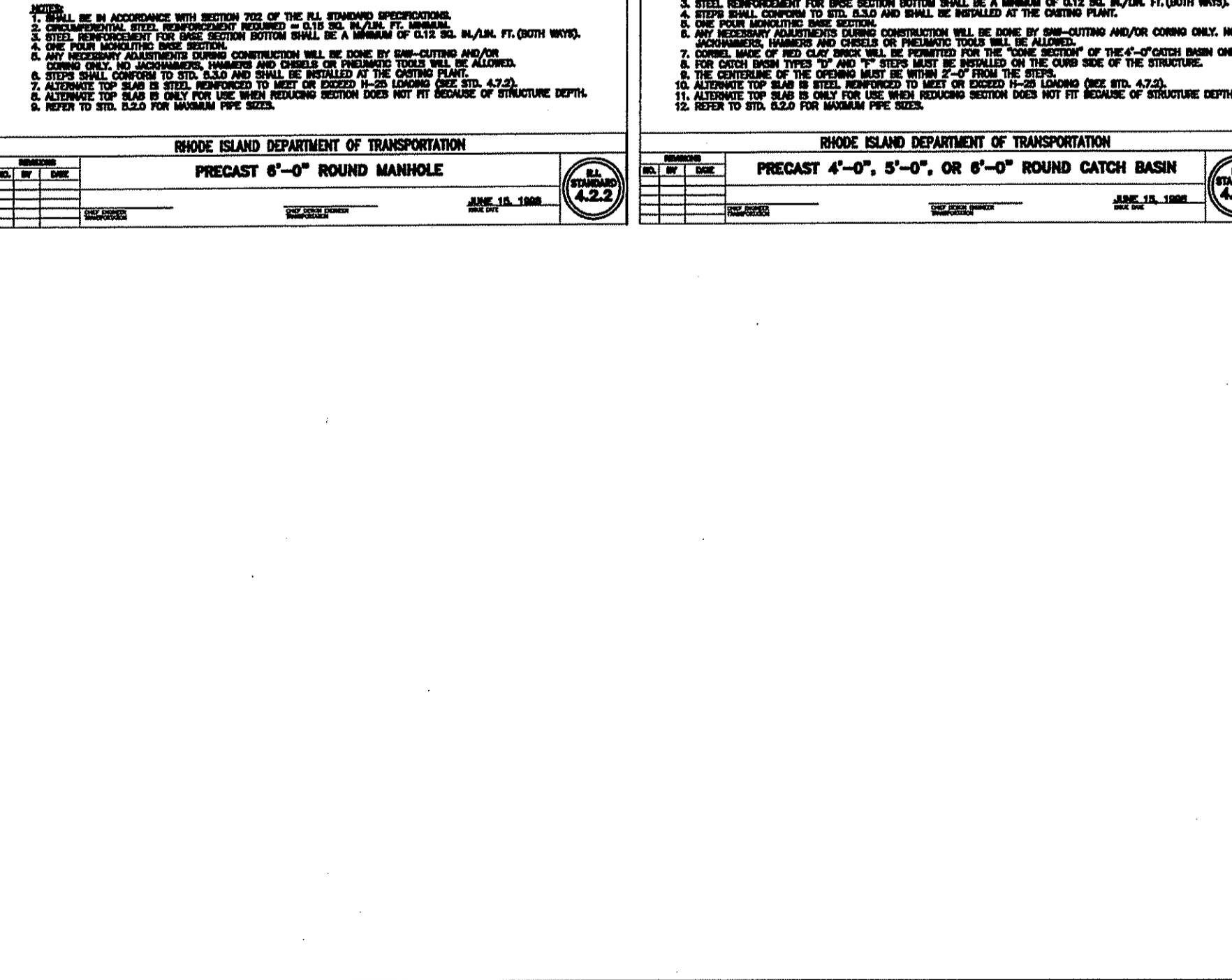
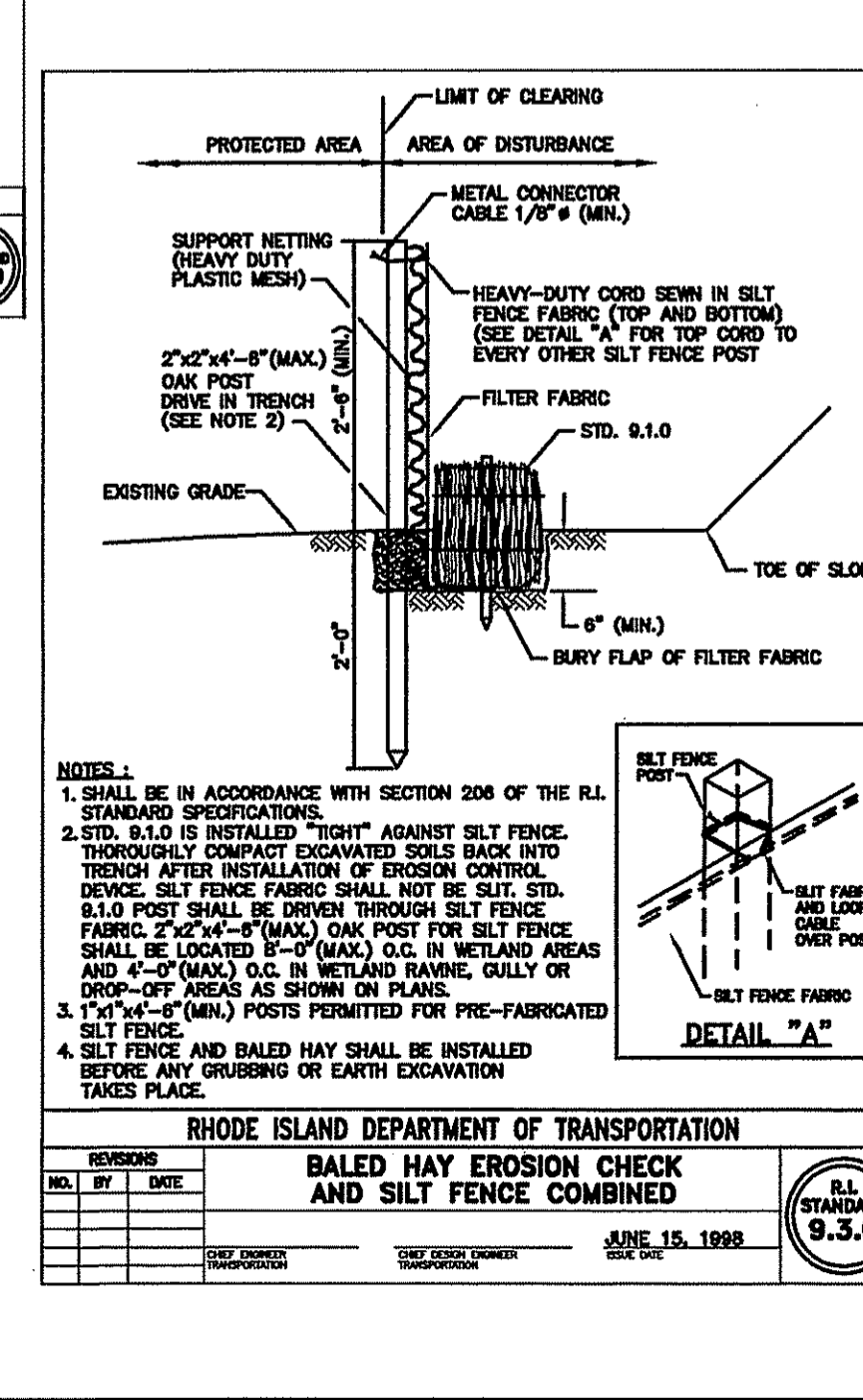
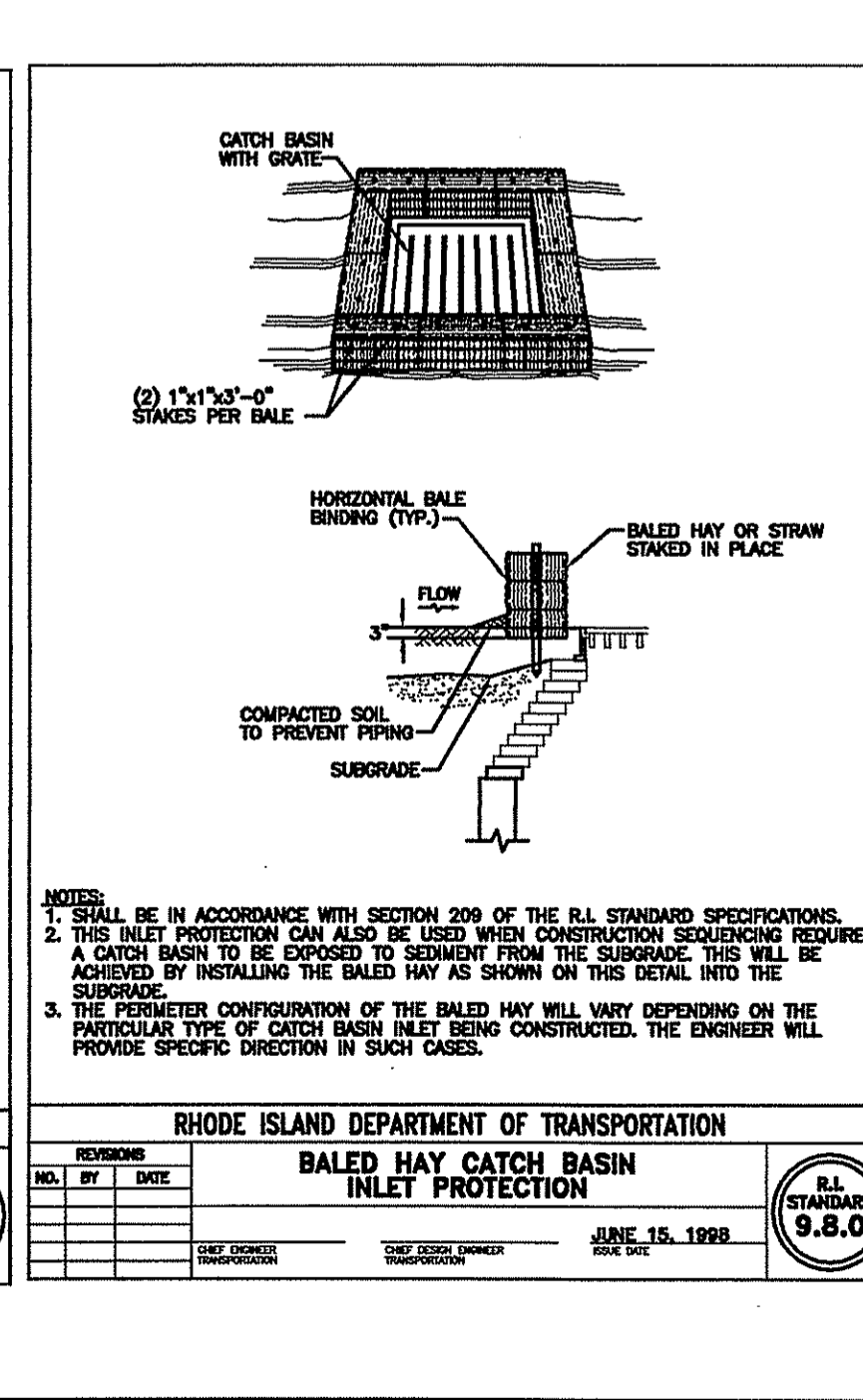
SHEET OF X DATE SCALE N.T.S.

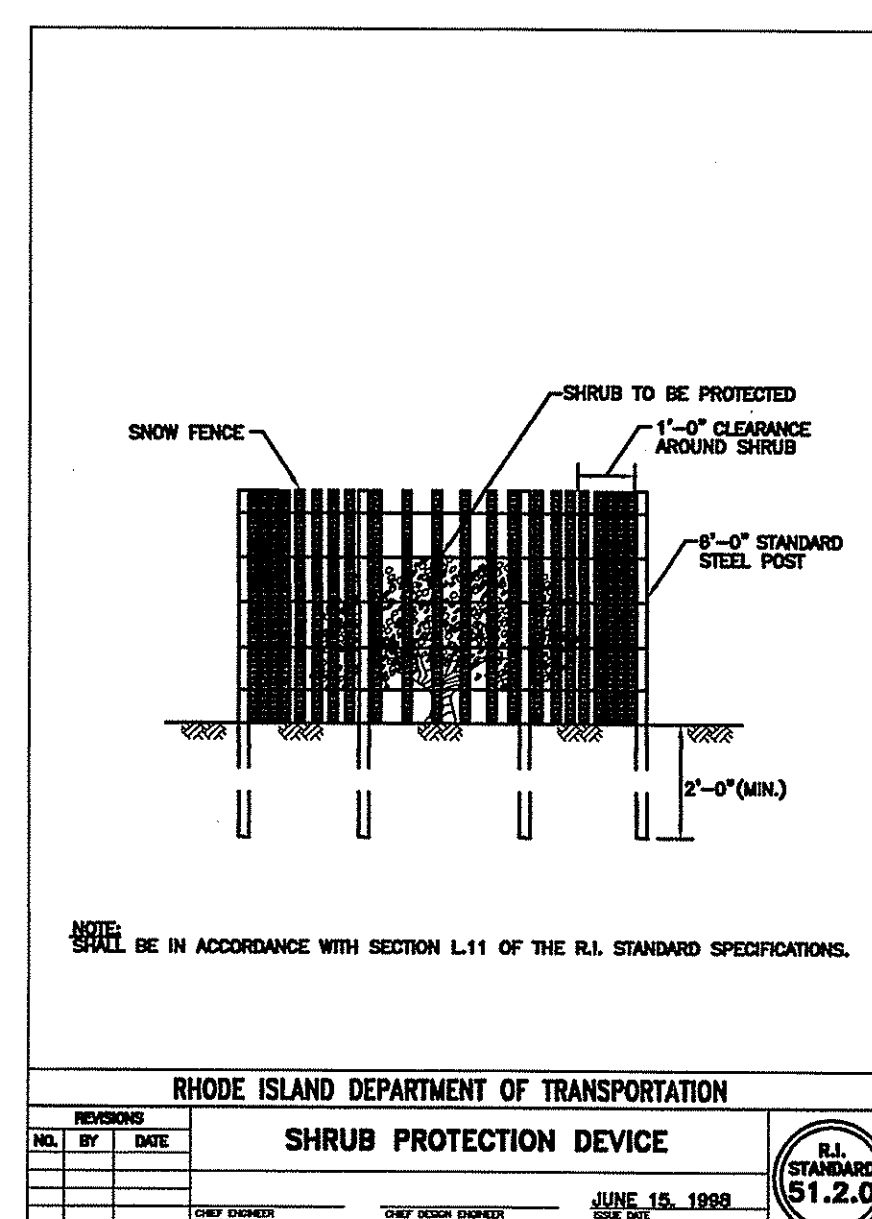
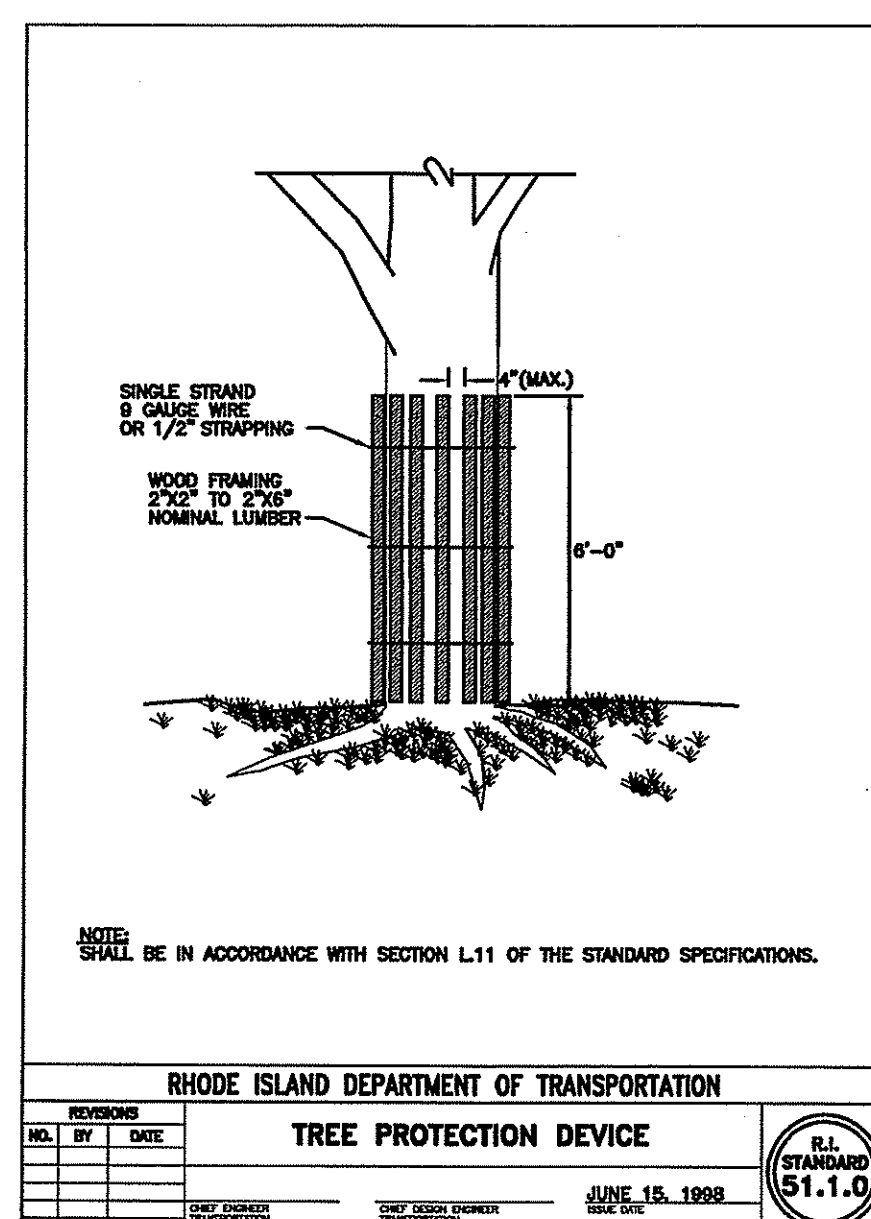
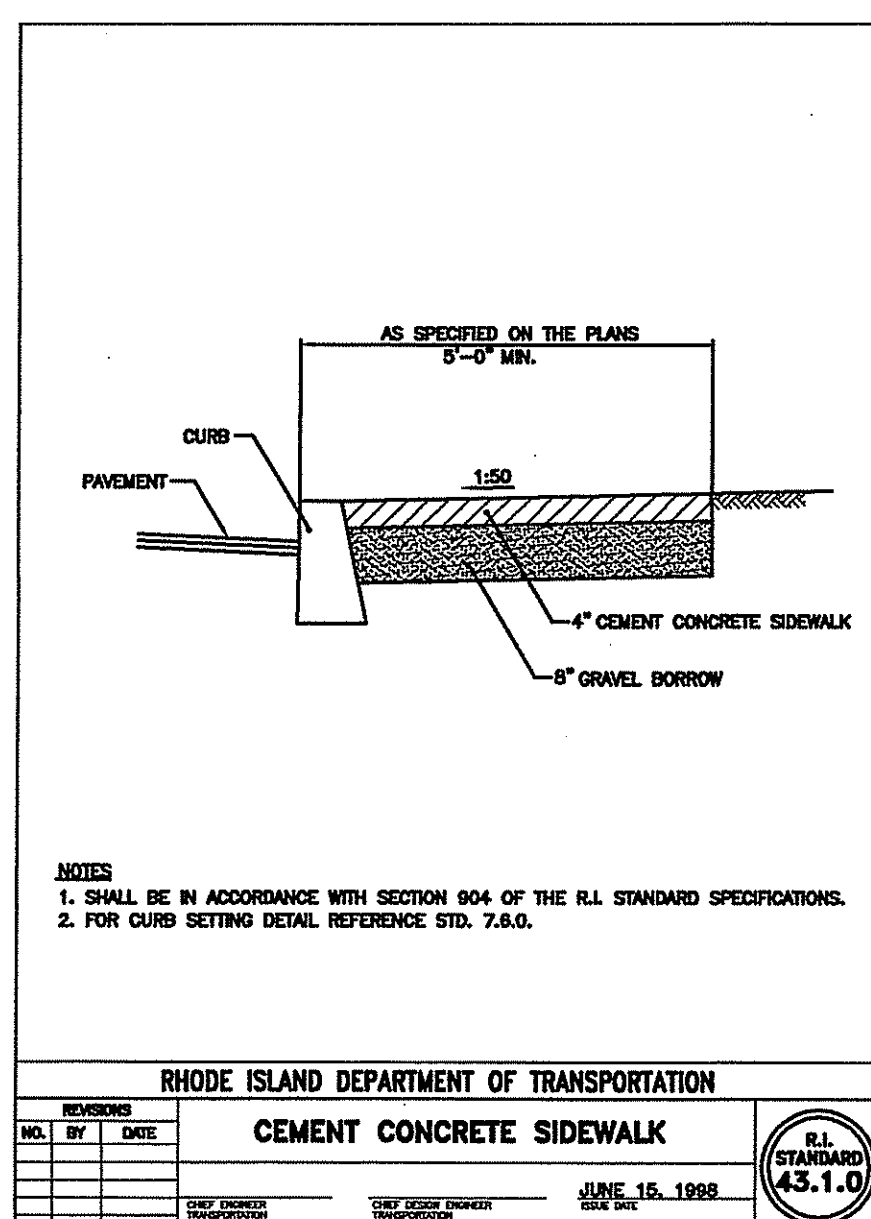
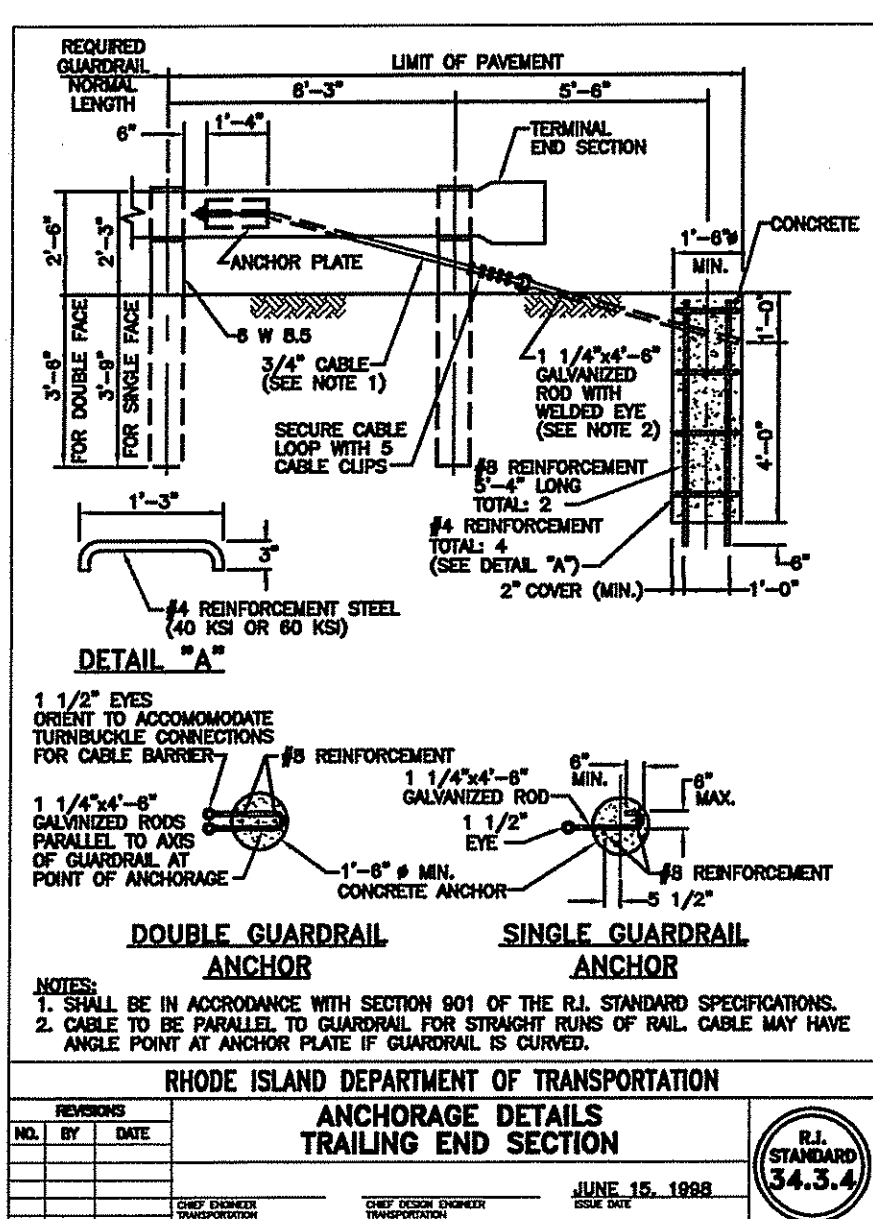
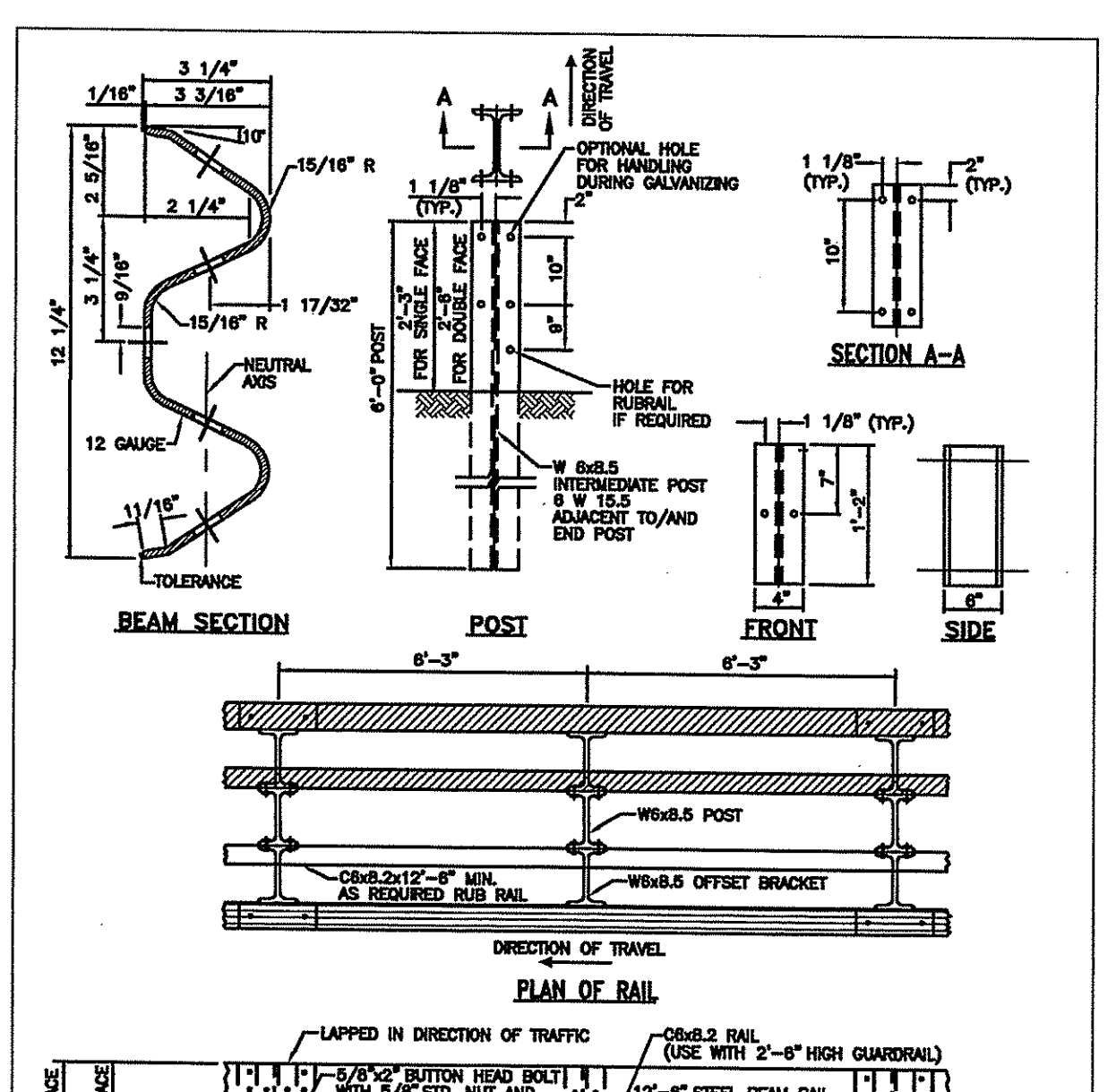
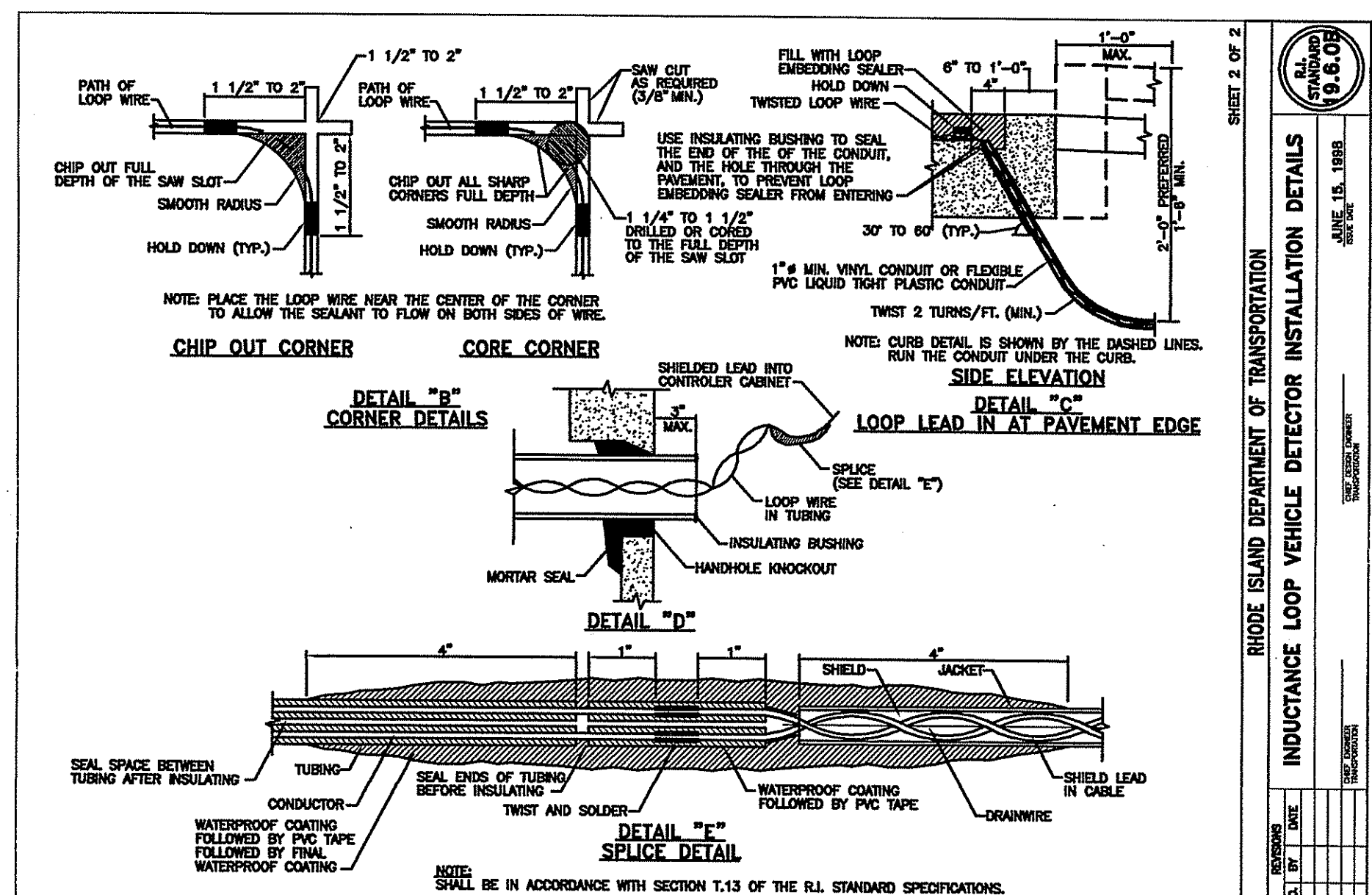
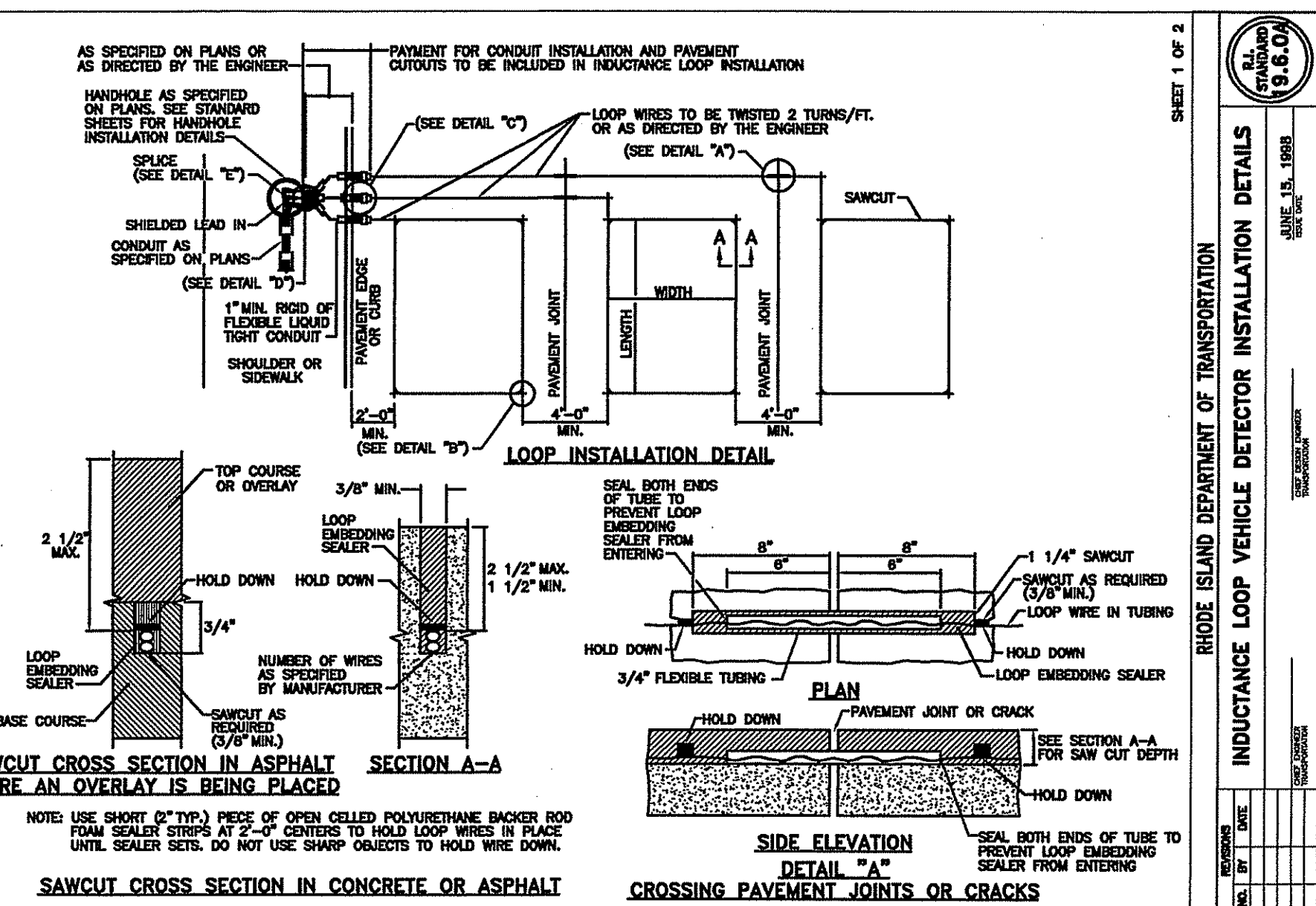
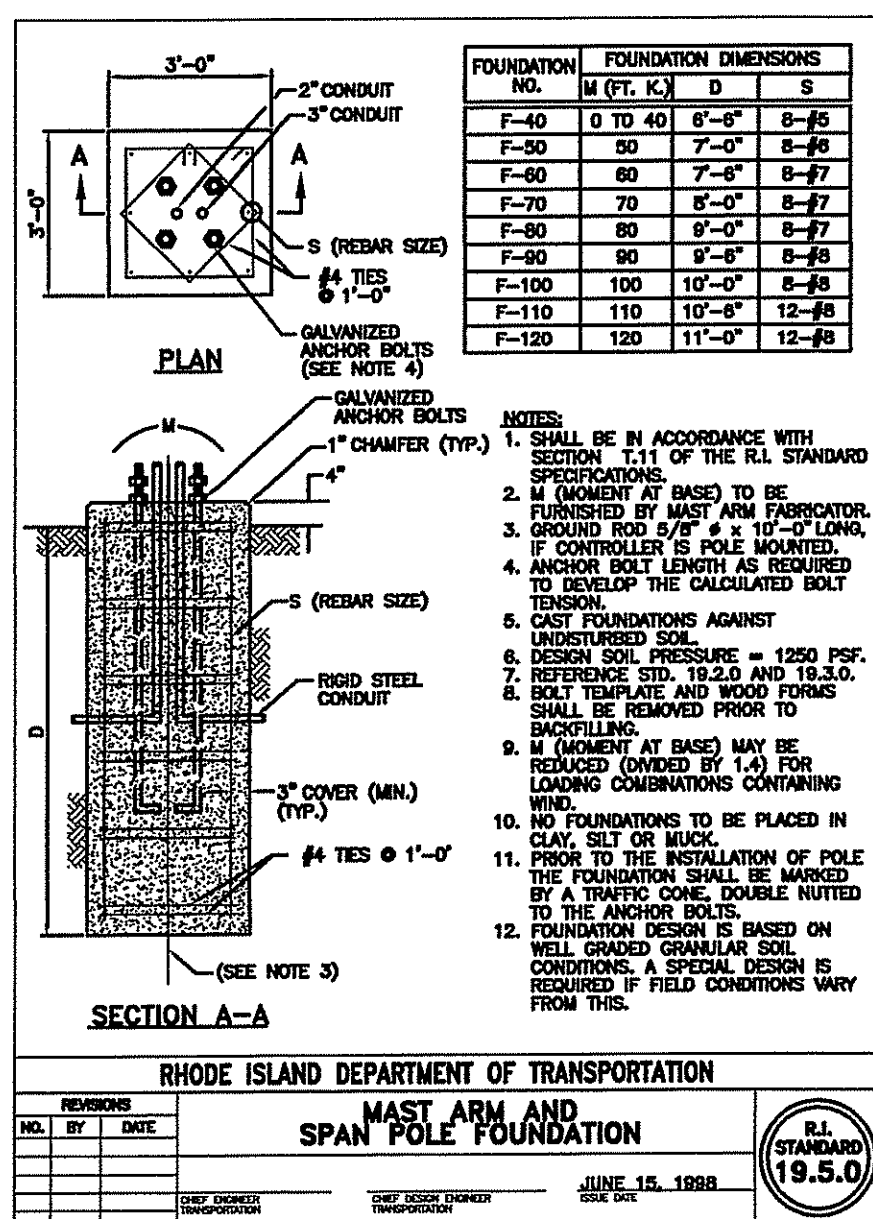
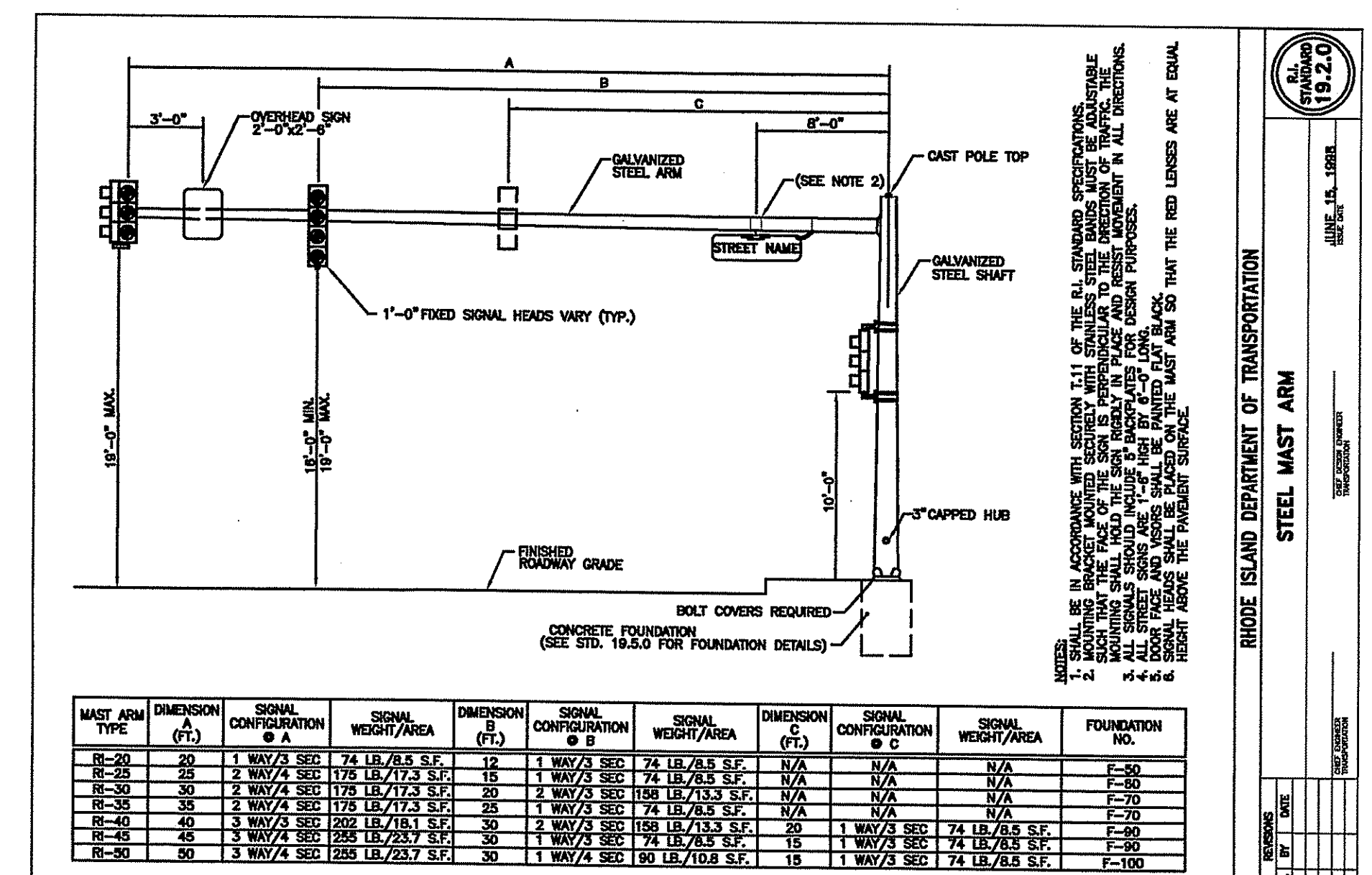
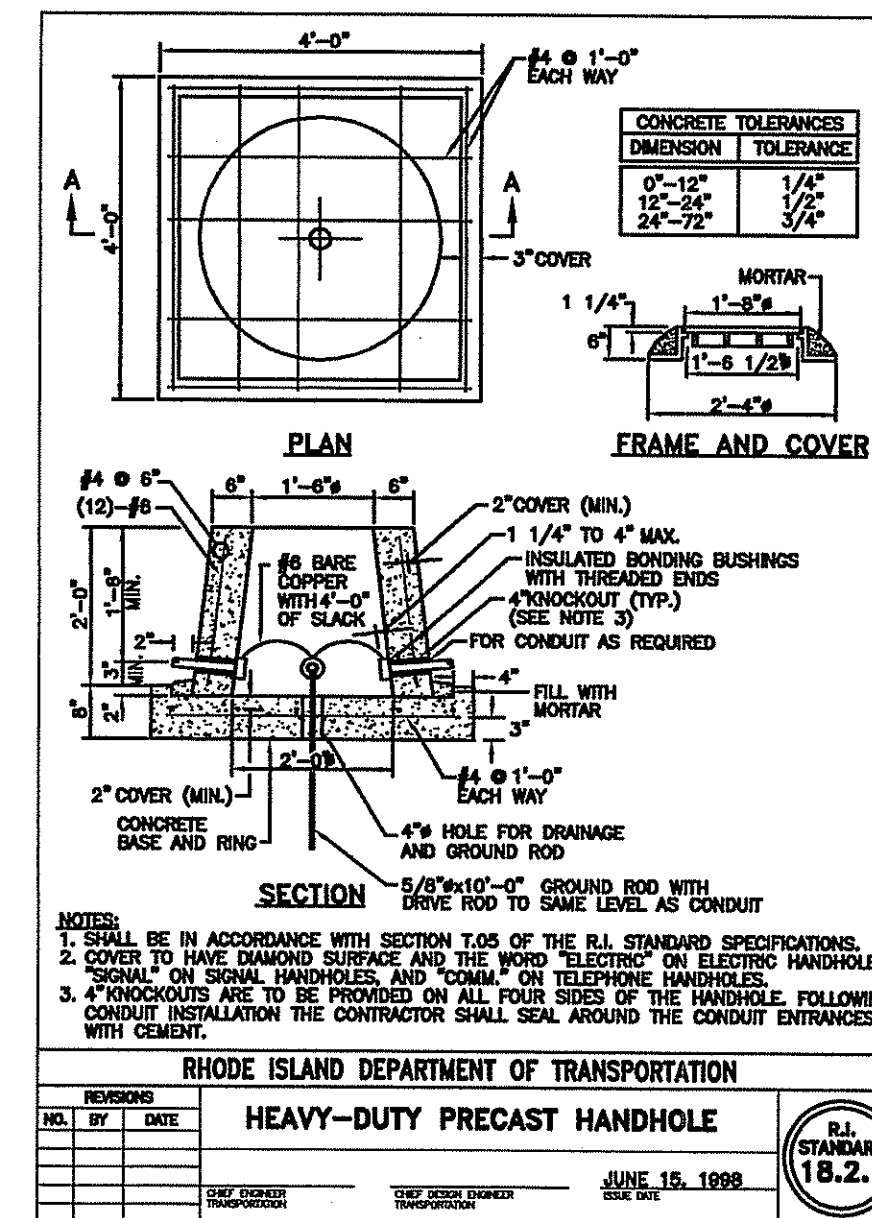
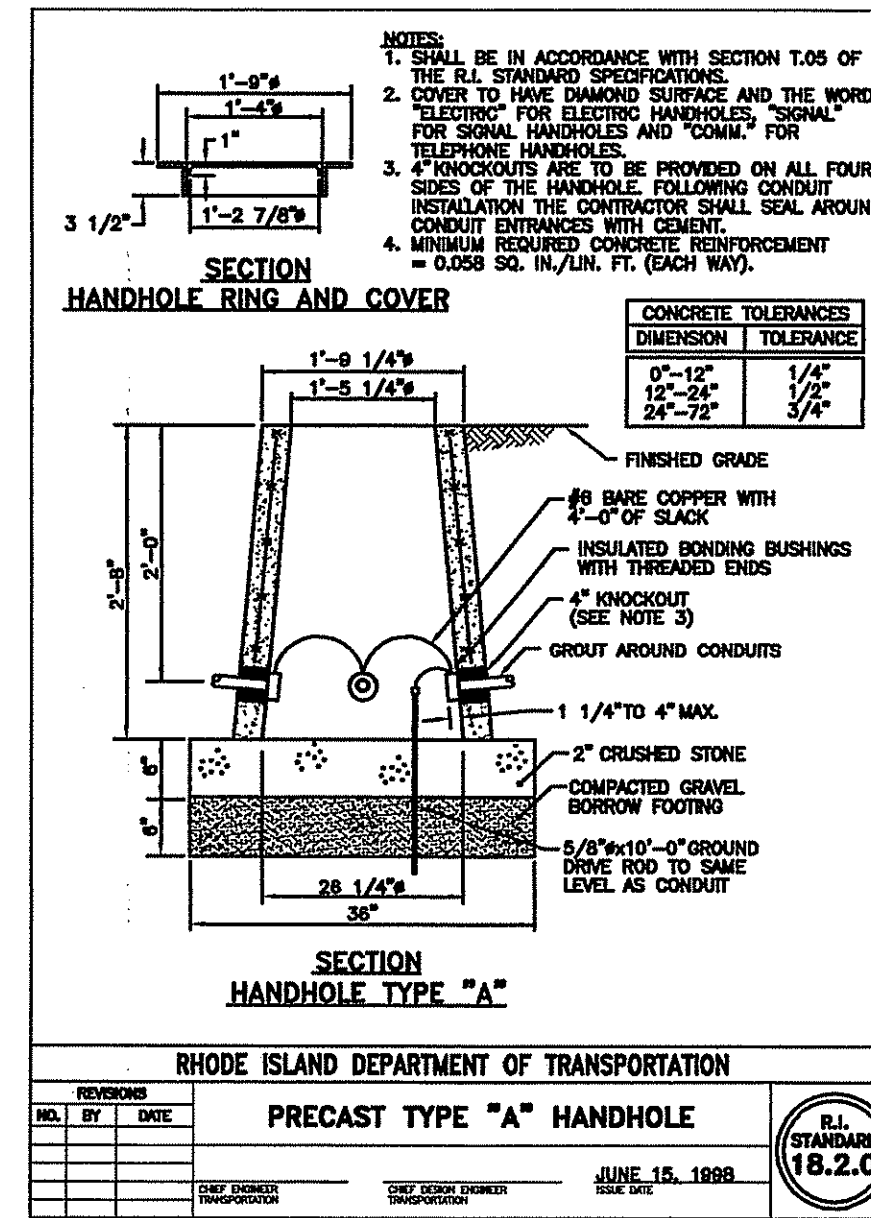
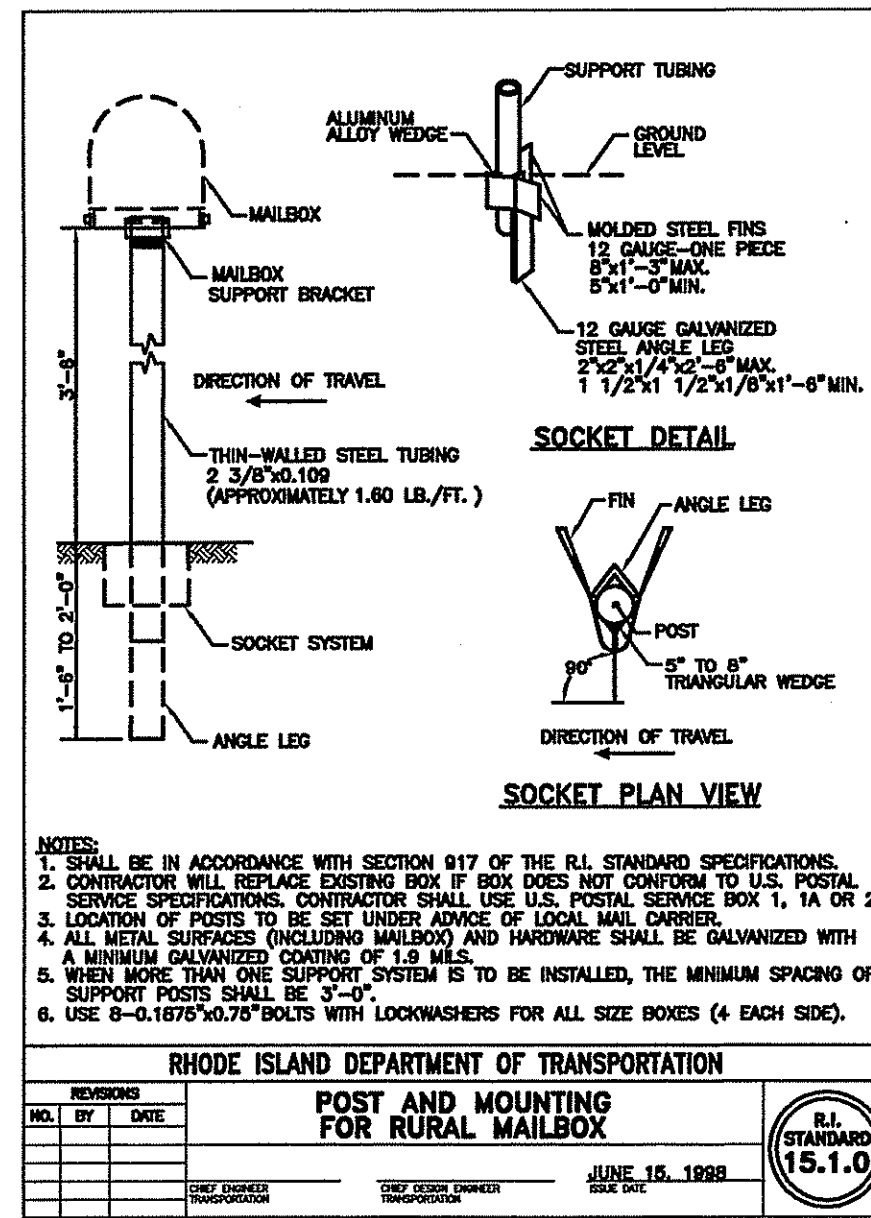
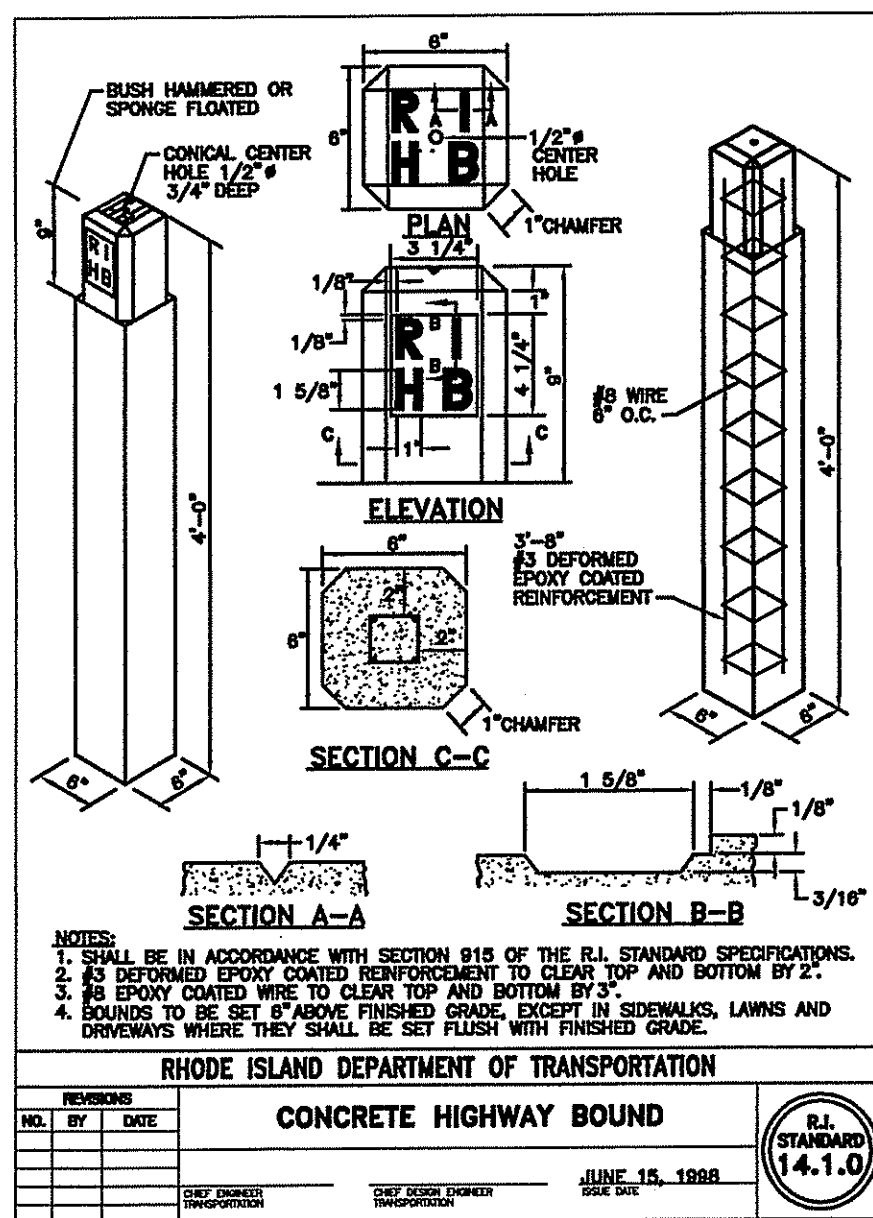
REVISIONS

NO.	DATE	BY
-----	------	----

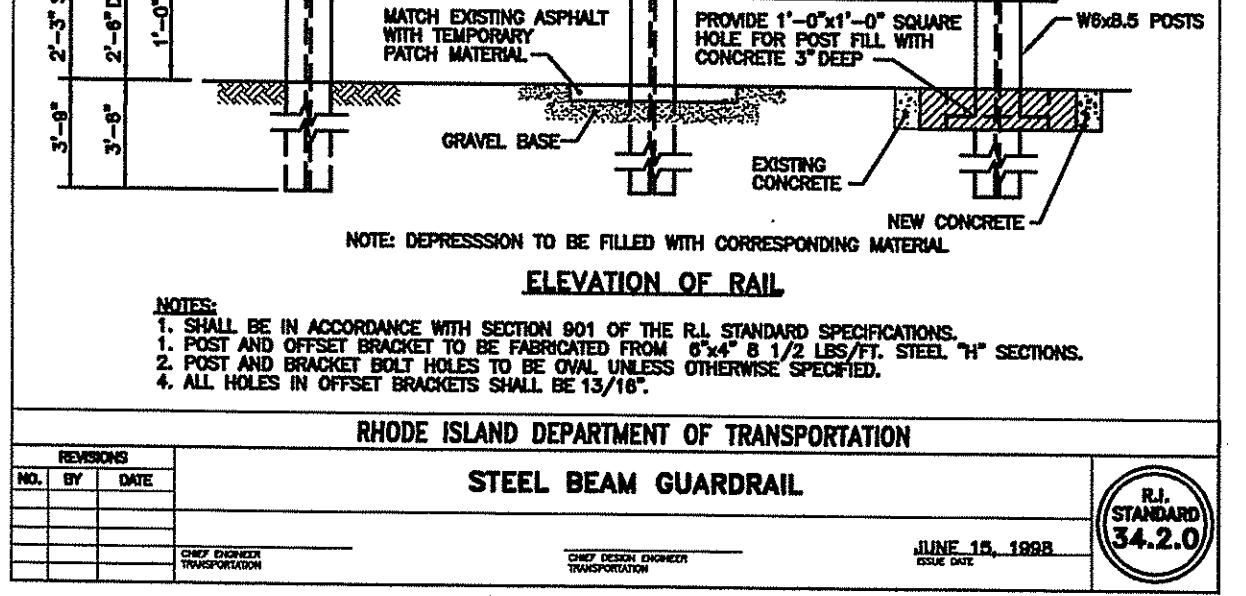
TODD A. RAVENELLE
 No. 5928
 REGISTERED PROFESSIONAL ENGINEER

Gordon R. Archibald, Inc.
 Professional Engineers
 Pawtucket, RI





DEPARTMENT OF ENVIRONMENTAL MANAGEMENT
 OFFICE OF WATER RESOURCES
 FRESHWATER WETLANDS PROGRAM
 APPROVED WITH CONDITIONS
 AS SPECIFIED IN THE LETTER OF APPROVAL
 DATED MAR 26 2008 FILE # 07-0463
 NO CHANGES ALLOWED WITHOUT PRIOR APPROVAL.
 APPROVED PLANS MUST BE AT CONSTRUCTION SITE.
Matthew D. Wenzel



REVISIONS

NO.	DATE	BY

TODD A. RAVENELLE
 No. 0728
 REGISTERED PROFESSIONAL ENGINEER

Gordon R. Archibald, Inc.
 Professional Engineers
 Pawtucket, RI

RICHMOND COMMONS VILLAGE CENTER
IMPROVEMENTS TO KINGSTOWN ROAD
 RICHMOND, RHODE ISLAND

RHODE ISLAND STANDARD DETAILS - 2

SHEET OF X DATE SCALE N.T.S.

R.I.D.E.M. SHEET NO. 18 OF 18