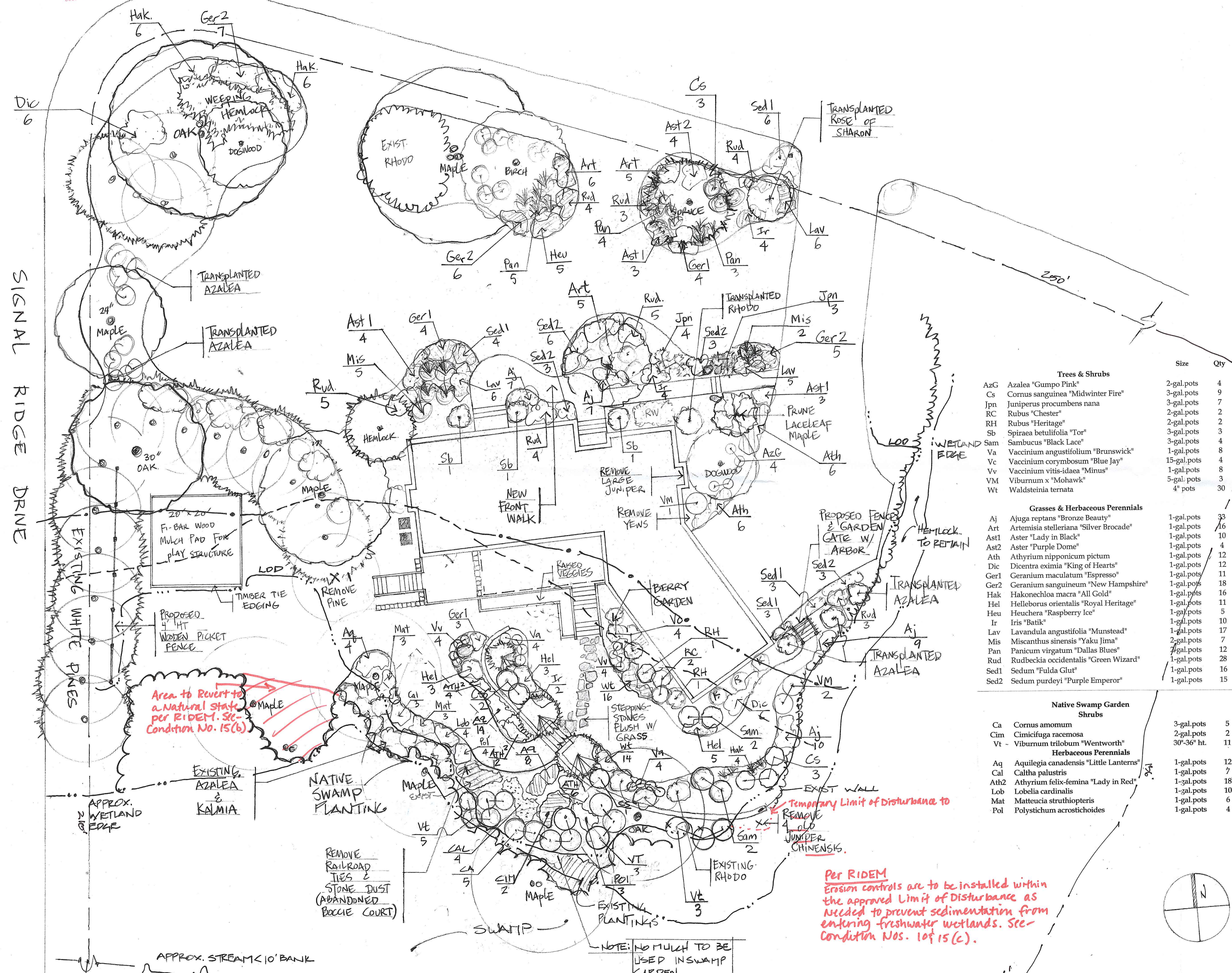


8002 4" = 1' W/M



LEGEND

- LIMIT OF DISTURBANCE
- PERIMETER WETLAND
- PROPERTY LINE
- RIVERBANK WETLAND
- ~ ~ ~ STREAM BANK
- WETLAND EDGE

Trees & Shrubs		Size	Qty
AzG	Azalea "Gumpo Pink"	2-gal.pots	4
Cs	Cornus sanguinea "Midwinter Fire"	3-gal.pots	9
Jpn	Juniperus procumbens nana	3-gal.pots	7
RC	Rubus "Chester"	2-gal.pots	2
RH	Rubus "Heritage"	2-gal.pots	2
Sb	Spiraea betulifolia "Tor"	3-gal.pots	3
Sam	Sambucus "Black Lace"	3-gal.pots	4
Va	Vaccinium angustifolium "Brunswick"	1-gal.pots	8
Vc	Vaccinium corymbosum "Blue Jay"	15-gal.pots	4
Vv	Vaccinium vitis-idaea "Minus"	1-gal.pots	8
VM	Viburnum x "Mohawk"	5-gal.pots	3
Wt	Waldsteinia ternata	4" pots	30
Grasses & Herbaceous Perennials			
Aj	Ajuga reptans "Bronze Beauty"	1-gal.pots	33
Art	Artemisia stelleriana "Silver Brocade"	1-gal.pots	16
Ast1	Aster "Lady in Black"	1-gal.pots	10
Ast2	Aster "Purple Dome"	1-gal.pots	4
Ath	Athyrium nipponicum pictum	1-gal.pots	12
Dic	Dicentra eximia "King of Hearts"	1-gal.pots	12
Ger1	Geranium maculatum "Espresso"	1-gal.pots	11
Ger2	Geranium sanguineum "New Hampshire"	1-gal.pots	18
Hak	Hakonechloa macra "All Gold"	1-gal.pots	16
Hel	Helleborus orientalis "Royal Heritage"	1-gal.pots	11
Heu	Heuchera "Raspberry Ice"	1-gal.pots	5
Ir	Iris "Batik"	1-gal.pots	10
Lav	Lavandula angustifolia "Munstead"	1-gal.pots	17
Mis	Miscanthus sinensis "Yaku Jima"	2-gal.pots	7
Pan	Panicum virgatum "Dallas Blues"	2-gal.pots	12
Rud	Rudbeckia occidentalis "Green Wizard"	1-gal.pots	28
Sed1	Sedum "Fulda Glut"	1-gal.pots	16
Sed2	Sedum purdeyi "Purple Emperor"	1-gal.pots	15

Native Swamp Garden			
Shrubs			
Ca	Cornus amomum	3-gal.pots	5
Cim	Cimicifuga racemosa	2-gal.pots	2
Vt	Viburnum trilobum "Wentworth"	30"-36" ht.	11
Herbaceous Perennials			
Aq	Aquilegia canadensis "Little Lanterns"	1-gal.pots	12
Cal	Caltha palustris	1-gal.pots	7
Ath2	Athyrium filix-femina "Lady in Red"	1-gal.pots	18
Lob	Lobelia cardinalis	1-gal.pots	10
Mat	Matteucia struthiopteris	1-gal.pots	6
Pol	Polystichum acrostichoides	1-gal.pots	4

DEPARTMENT OF ENVIRONMENTAL MANAGEMENT
 OFFICE OF WATER RESOURCES
 FRESHWATER WETLANDS PROGRAM
 APPROVED WITH CONDITIONS
 AS SPECIFIED IN THE LETTER OF APPROVAL
 DATED MAR 31 2008 FILE # 08-0007
 NO CHANGES ALLOWED WITHOUT PRIOR APPROVAL
 APPROVED PLANS MUST BE AT CONSTRUCTION SITE
 Nancy L. Freeman



LOCATION MAP

APP# 08-0007



CleanScape Landscape Architecture
 150 Colfax Street
 Providence RI, 02905 (401) 461-1766

GUGLIELMO RESIDENCE
 40 WATCH HILL DRIVE
 EAST GREENWICH, RI 02818

SCALE: 1" = 10'-0"
 DRAWN BY: PMB
 DATE: 9/7/07 REVISED 3/1/08
 SHEET: 1 OF 1



Per RIDEM
 Erosion controls are to be installed within
 the approved Limit of Disturbance as
 needed to prevent sedimentation from
 entering freshwater wetlands. See
 Condition Nos. 10 & 15(c).

NOTE: NO MULCH TO BE
 USED IN SWAMP
 GARDEN