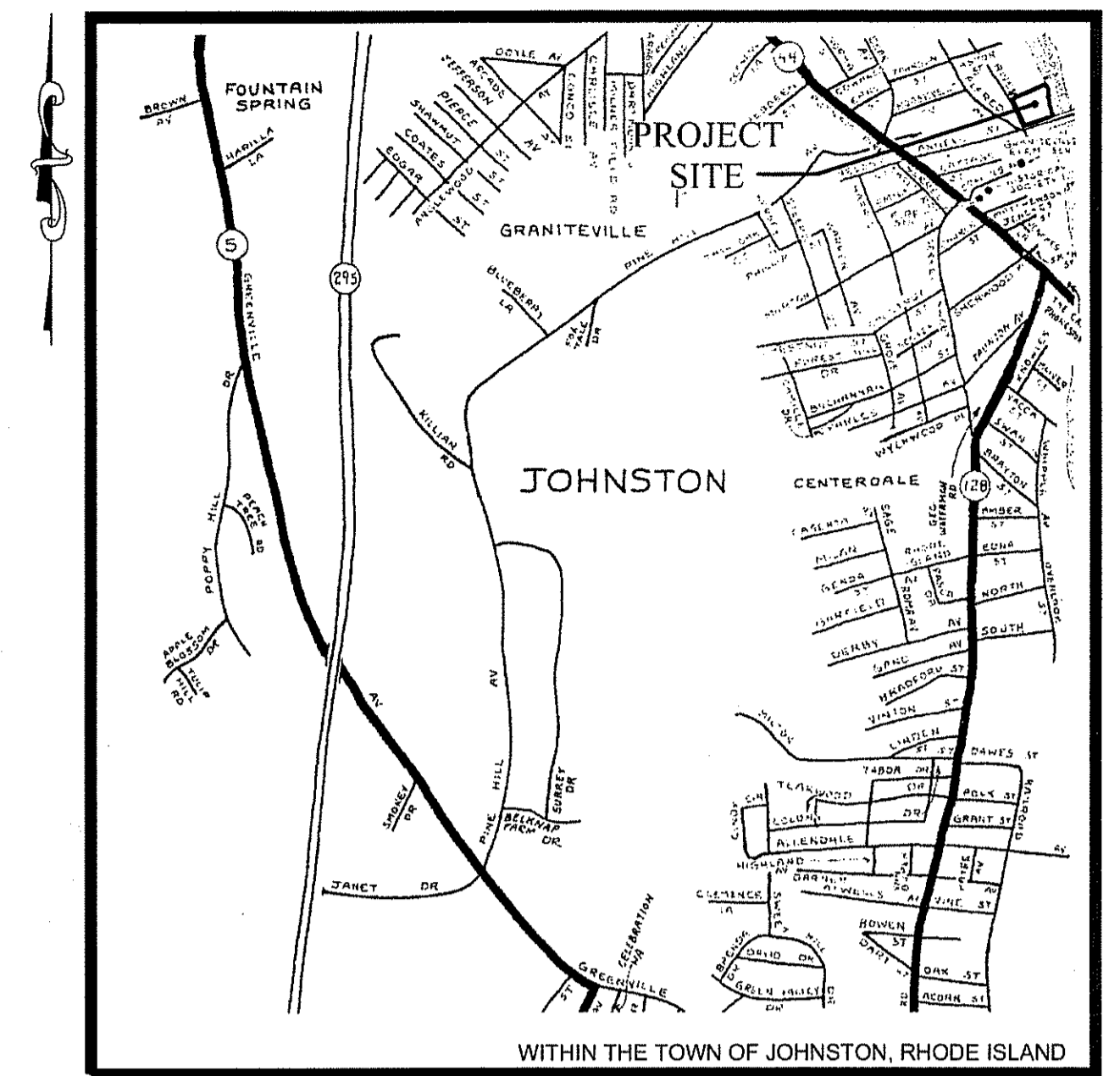
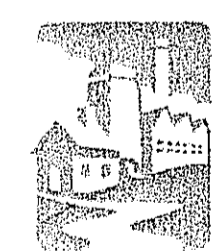


CRICKET FIELD RENOVATION PLAN

ANGELL STREET, JOHNSTON, RHODE ISLAND



LOCUS MAP
NOT TO SCALE



Prepared for:
**WOONASQUATUCKET RIVER
WATERSHED COUNCIL**

In Association with:
**TOWN OF JOHNSTON PARKS AND
RECREATION DEPARTMENT**
JOSEPH M. POLISENA, MAYOR

Prepared By:
THE GIFFORD DESIGN GROUP, Inc.
LANDSCAPE ARCHITECTURE ENVIRONMENTAL PLANNING

In Association with:
MARC N. NYBERG ASSOCIATES, Inc.
LAND SURVEYORS AND PLANNERS

DEPARTMENT OF ENVIRONMENTAL MANAGEMENT
OFFICE OF WATER RESOURCES
FRESHWATER WETLANDS PROGRAM
APPROVED WITH CONDITIONS
AS SPECIFIED IN THE LETTER OF APPROVAL
DATED **MAR 24 2008** FILE # **08-0042**
NO CHANGES ALLOWED WITHOUT PRIOR APPROVAL
APPROVED PLANS MUST BE AT CONSTRUCTION SITE

Nancy L. Freeman

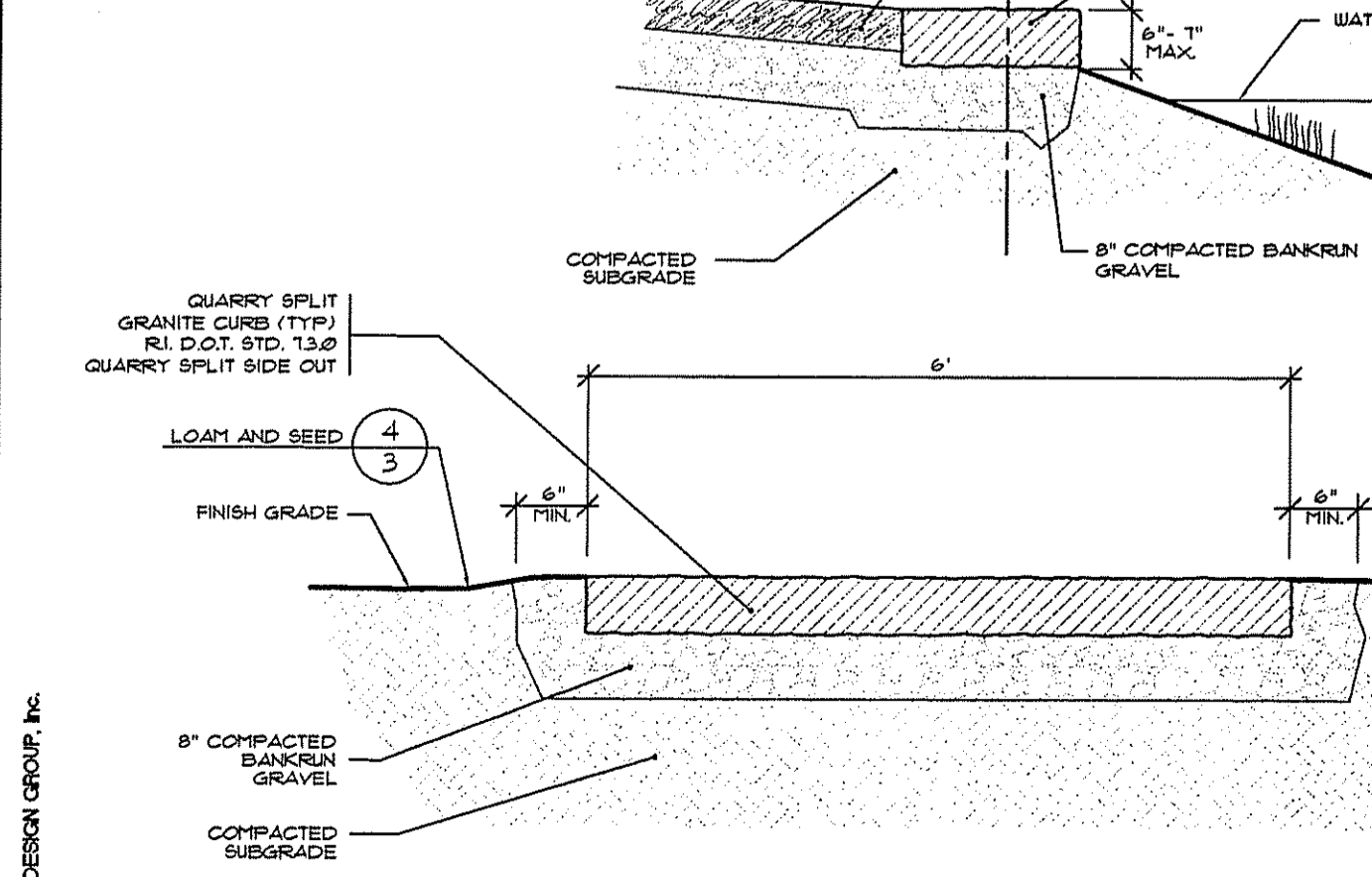
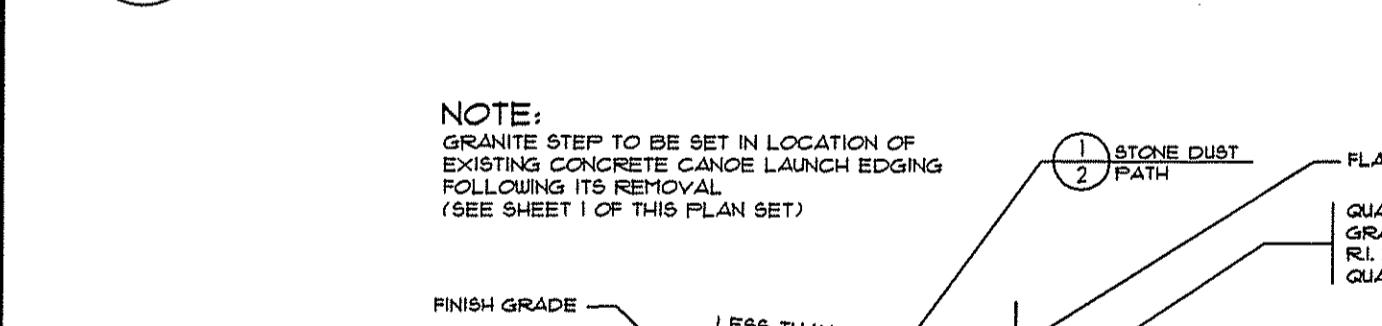
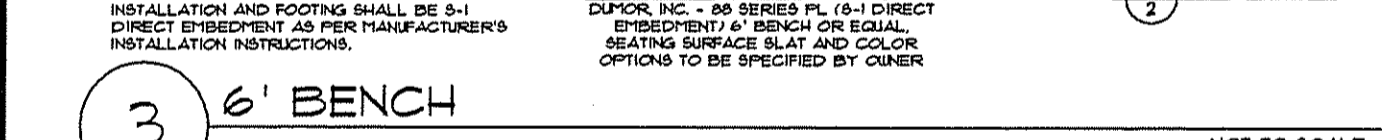
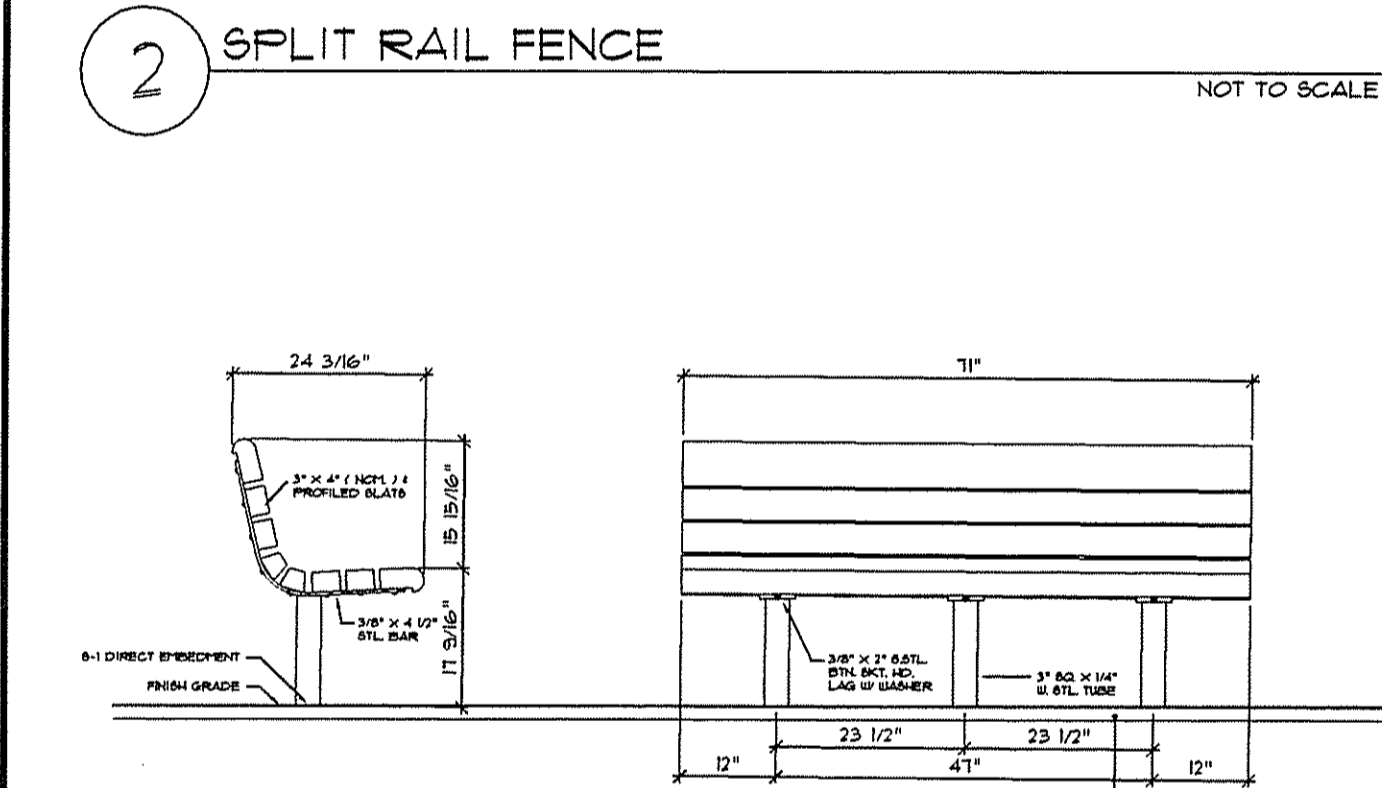
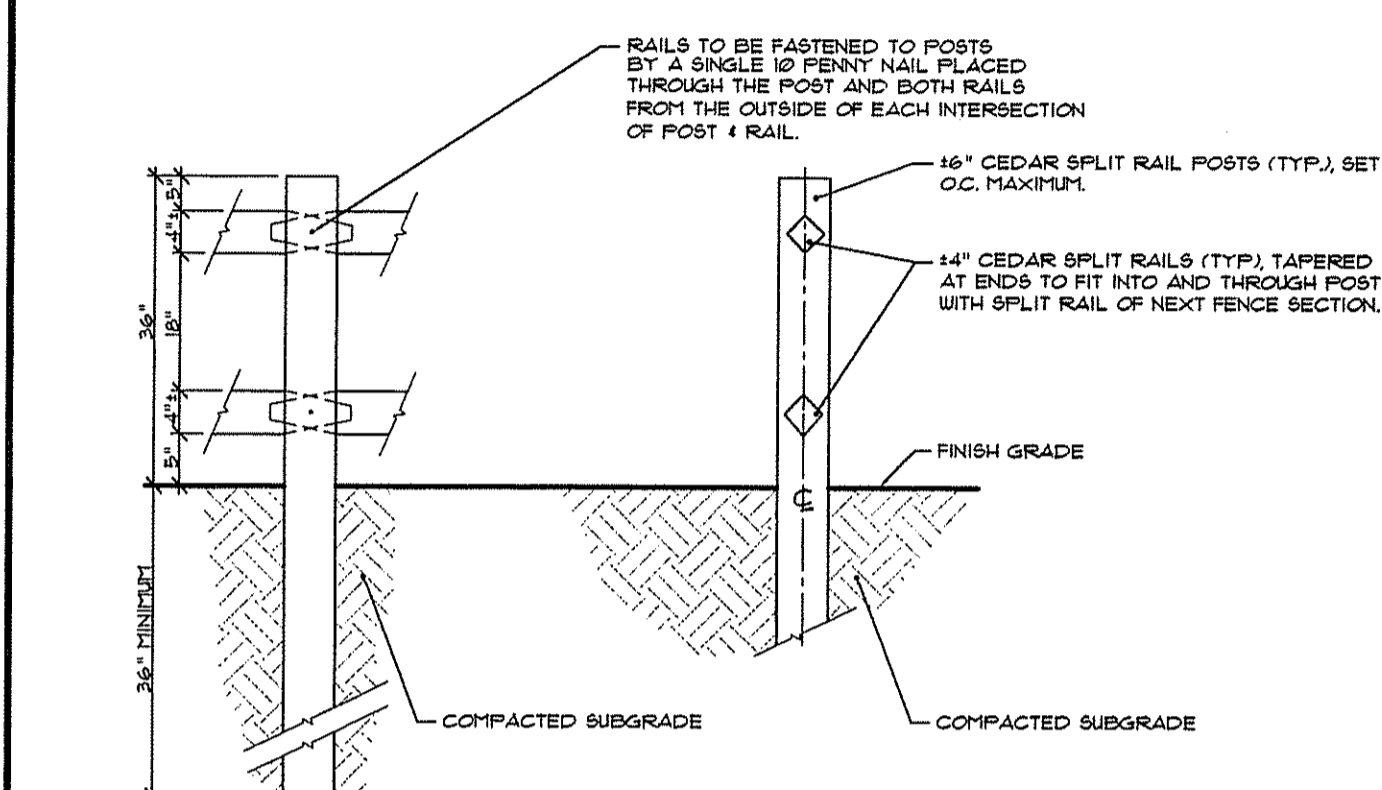
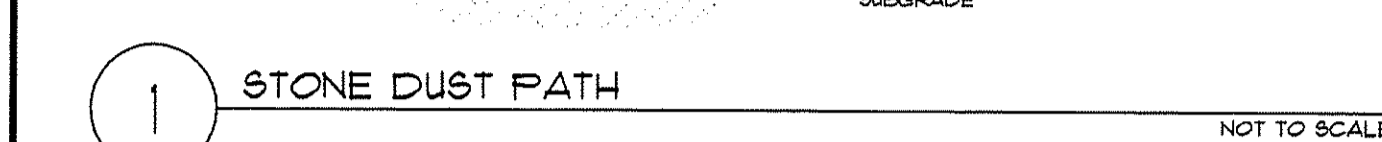


TABLE OF CONTENTS:

SHEET TITLE	SHEET #
EXISTING CONDITIONS / SITE PREPARATION PLAN	1 OF 3
SITE LAYOUT & GRADING PLAN	2 OF 3
PLANTING PLAN	3 OF 3

FEBRUARY 2008

200.572 Cricket Field Layout Plan (2) of 2



LEGEND:

	APPROXIMATE OVERALL PROPERTY LINE
	EDGE OF WATER
	FLAGGED WETLAND EDGE
	50' FOOT PERIMETER WETLAND
	200' FOOT RIVERBANK WETLAND
	EXISTING MAJOR CONTOUR LINE
	EXISTING MINOR CONTOUR LINE
	EXISTING SPOT GRADE
	EXISTING TREELINE
	EXISTING CHAIN LINK FENCE TO REMAIN
	EXISTING CONCRETE WALLS
	EXISTING METAL GUARDRAIL
	LIMIT-OF-DISTURBANCE
	HAYBALE/SILTATION FENCE
	EROSION AND SILTATION CONTROL LINE
	PROPOSED ROOT ZONE PROTECTION
	PROPOSED TREELINE
	PROPOSED MAJOR CONTOUR LINE
	PROPOSED MINOR CONTOUR LINE
	RADIUS OF STONE DUST PATH SECTION
	APPROXIMATE ARC LENGTH OF STONE DUST PATH SECTION
	PROPOSED STONE DUST PATH
	PROPOSED SPLIT RAIL FENCE
	6' BENCH
	TRASH RECEPTACLE
	CANOE RACK
	EXISTING TREES TO REMAIN AND BE PROTECTED WITHIN LIMIT-OF-DISTURBANCE

STONE DUST PATH AND SITE AMENITY LAYOUT NOTES:

HORIZONTAL ALIGNMENT:

- OVERALL HORIZONTAL ALIGNMENT INDICATED ON THIS PLAN IS INTENDED TO BE AN ACCURATE GUIDELINE. FINAL ALIGNMENT SHALL BE STAKED IN FIELD AND REVIEWED BY OWNER'S REPRESENTATIVE PRIOR TO INSTALLATION.

VERTICAL ALIGNMENT:

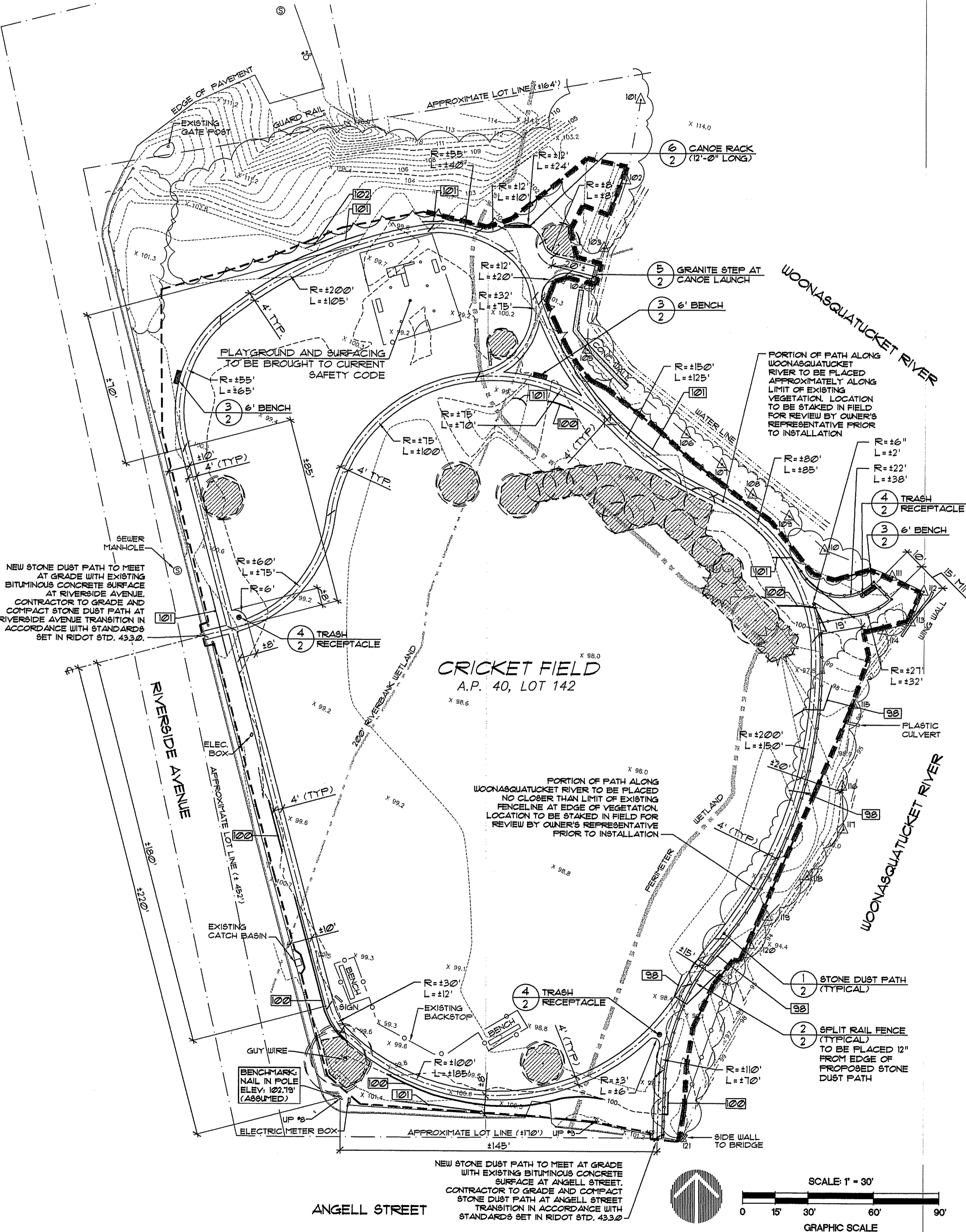
- ALL WALKWAYS TO BE AT A SLOPE LESS THAN 5%. ALL AT GRADE STONE DUST WALK SURFACES WILL ALSO HAVE A 2% CROSS SLOPE FOR PROPER DRAINAGE (SEE 1).

SITE AMENITY LAYOUT:

- SITE AMENITY LOCATIONS ARE SHOWN FOR APPROXIMATE LOCATION ONLY. FINAL LOCATIONS TO BE DETERMINED BY OWNER. SUCH LOCATIONS SHALL BE WITHIN THE SPECIFIED LIMIT OF WORK.

PLAYGROUND NOTE:

- PLAYGROUND AND SURFACES TO BE BROUGHT TO CURRENT SAFETY STANDARDS AND COMPLY WITH ALL LOCAL, STATE AND FEDERAL CODES.



No.	Revision:	Date:

REFERENCES:

EXISTING CONDITIONS AND TOPOGRAPHY:
 EXISTING CONDITIONS PLAN, PLAT 40, LOT 142, JOHNSTON, RHODE ISLAND;
 PREPARED FOR: THE GIFFORD DESIGN GROUP, INC.
 PREPARED BY: MARC N. NYBERG ASSOCIATES, INC.;
 SCALE: 1" = 30', DATED: September 21, 2007
 W/Revisions Through JANUARY 24, 2008

APPROXIMATE PROPERTY LINE INFORMATION:
 TOWN OF JOHNSTON, R.I. ASSESSOR'S PLAT #40

BASE FLOOD ELEVATION:
 FIRM FLOOD INSURANCE RATE MAP, TOWN OF JOHNSTON, RHODE ISLAND, PROVIDENCE COUNTY; PANEL 10 OF 20; COMMUNITY PANEL NUMBER: 440018 0010 C; MAP REVISED: NOVEMBER 17, 1993

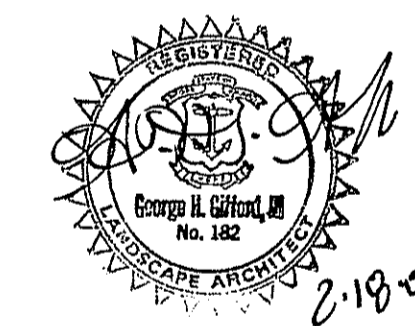


CRICKET FIELD RENOVATION PLAN

A.P. 40, LOT 142
 ANGELL STREET
 JOHNSTON, RI

PREPARED FOR:
 THE WOONASQUATUCKET RIVER
 WATERSHED COUNCIL

IN ASSOCIATION WITH:
 THE TOWN OF JOHNSTON

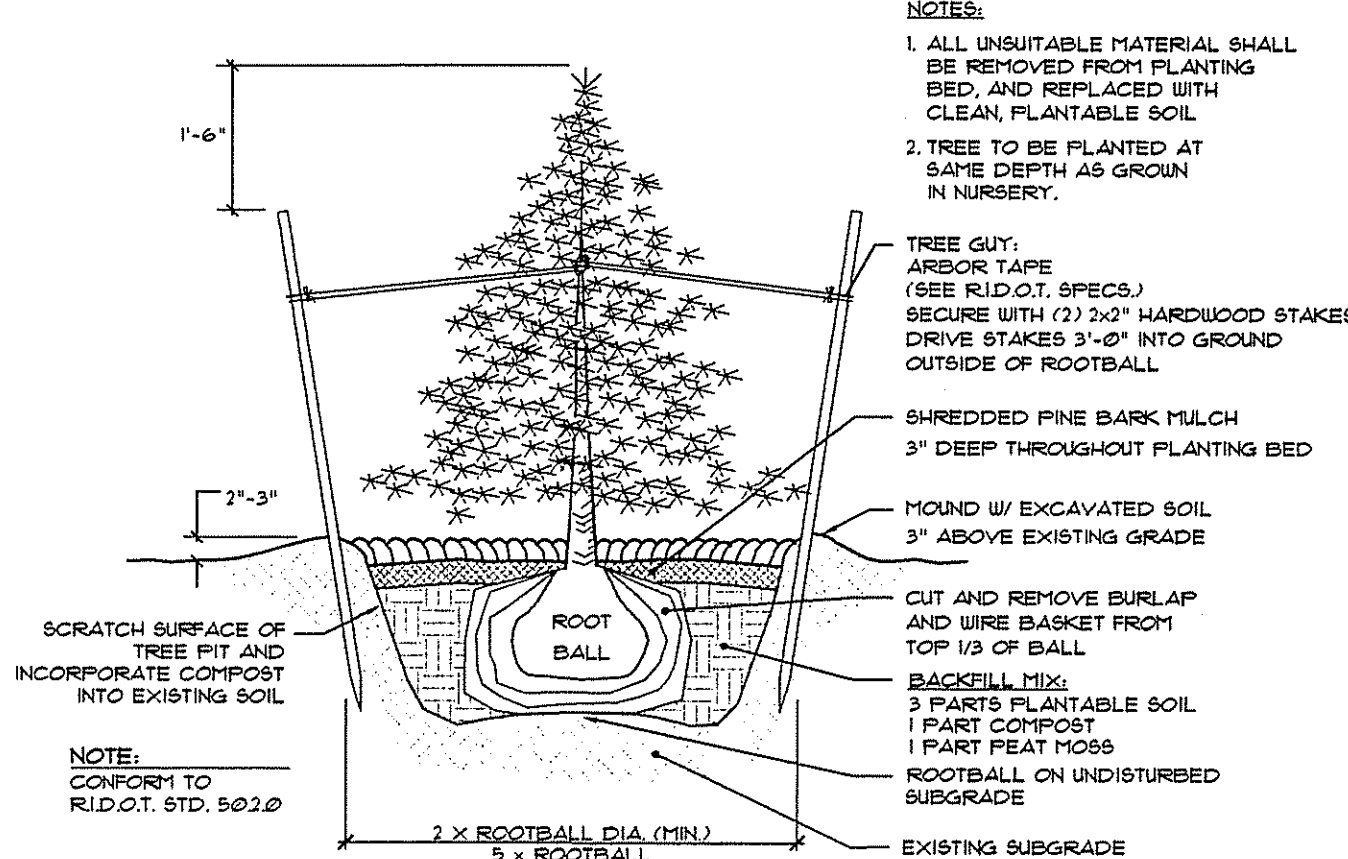


THE GIFFORD DESIGN GROUP, Inc.
 LANDSCAPE ARCHITECTURE
 ENVIRONMENTAL PLANNING
 4095 MENDON ROAD, CUMBERLAND, RHODE ISLAND 02864
 P O N E (401) 671-6335 F A X (401) 671-6465

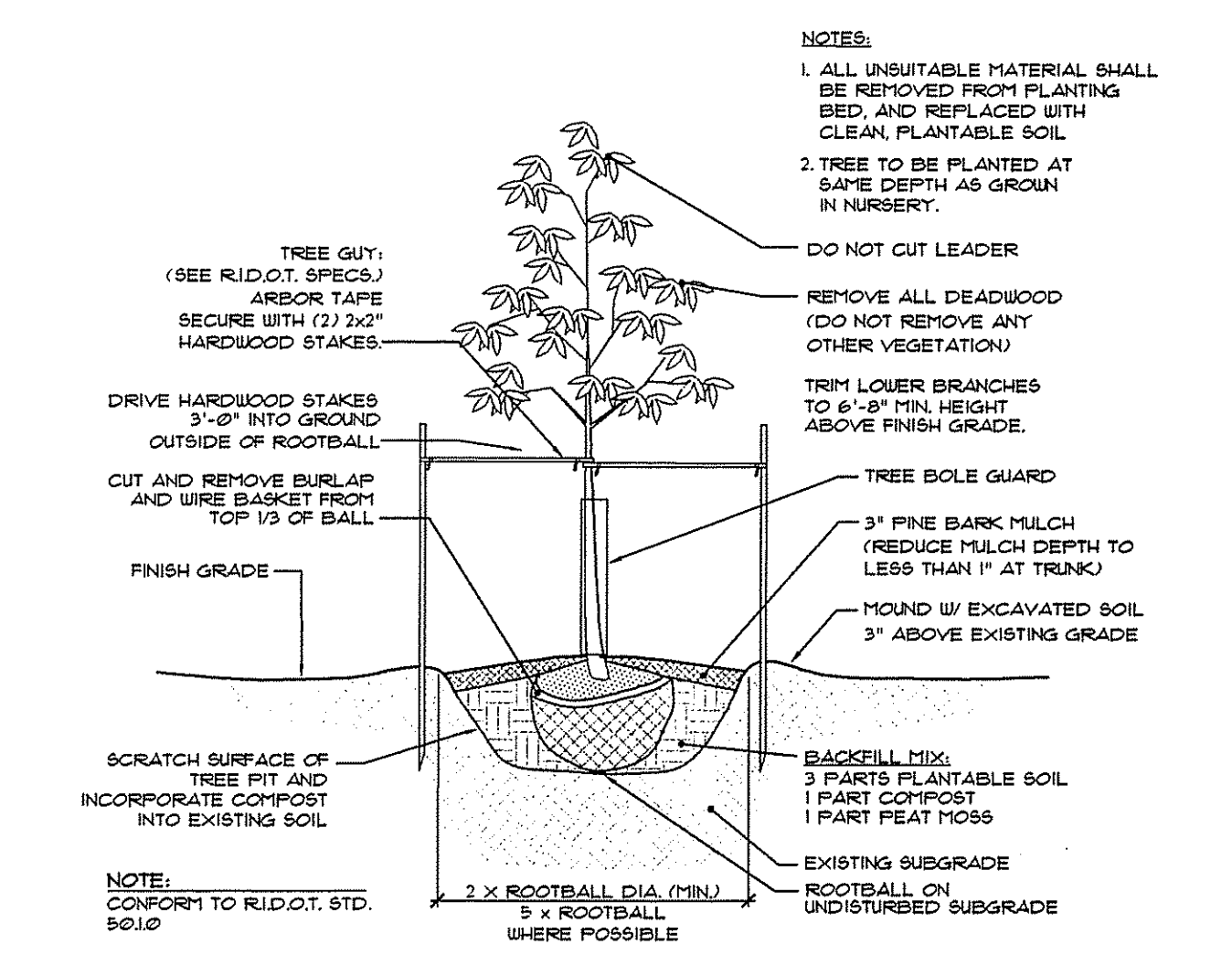
DEPARTMENT OF ENVIRONMENTAL AFFAIRS
 OFFICE OF WATER RESOURCES
 FRESHWATER WETLANDS PROGRAM
 APPROVED WITH CONDITIONS
 AS SPECIFIED IN THE LETTER OF APPROVAL
 DATED MAR 24 2008 FILE # 08-0042
 NO CHANGES ALLOWED WITHOUT PRIOR APPROVAL
 APPROVED PLANS MUST BE AT CONSTRUCTION SITE

SITE LAYOUT AND GRADING PLAN

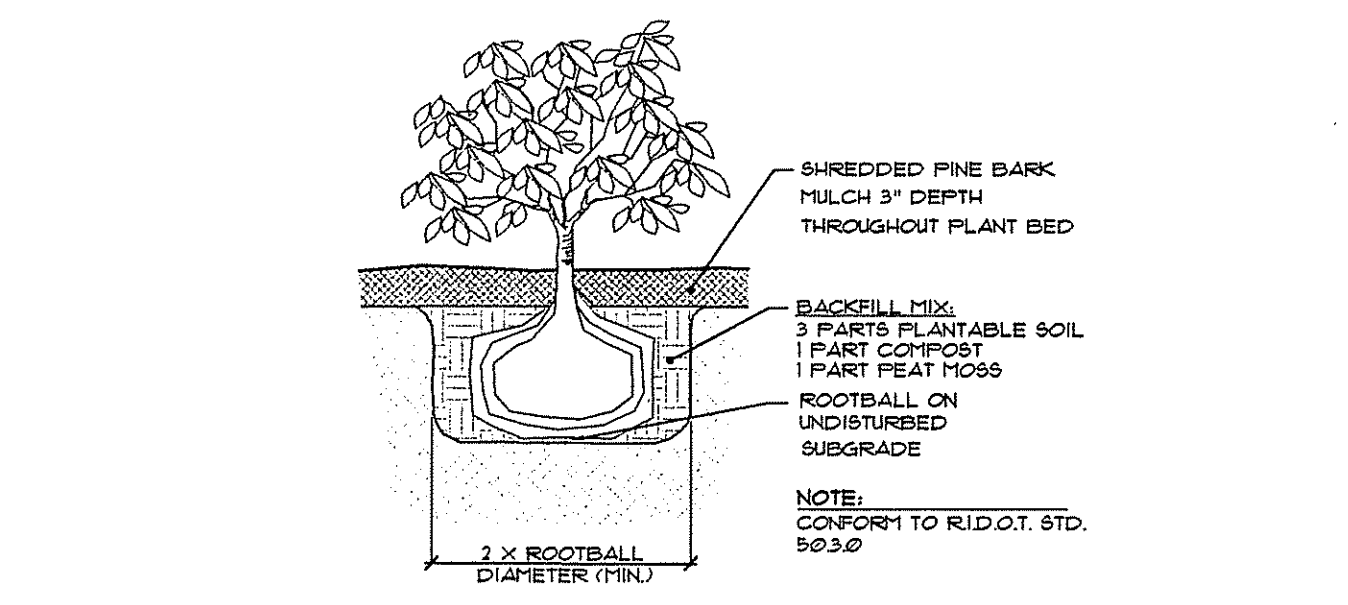
PROJECT NO. 200.572 DRAWING 2 OF 3
 DATE: FEBRUARY 2008
 SCALE: 1" = 30'
 DRAWN BY: KMA, WS
 CHECKED BY: KMA, GHG



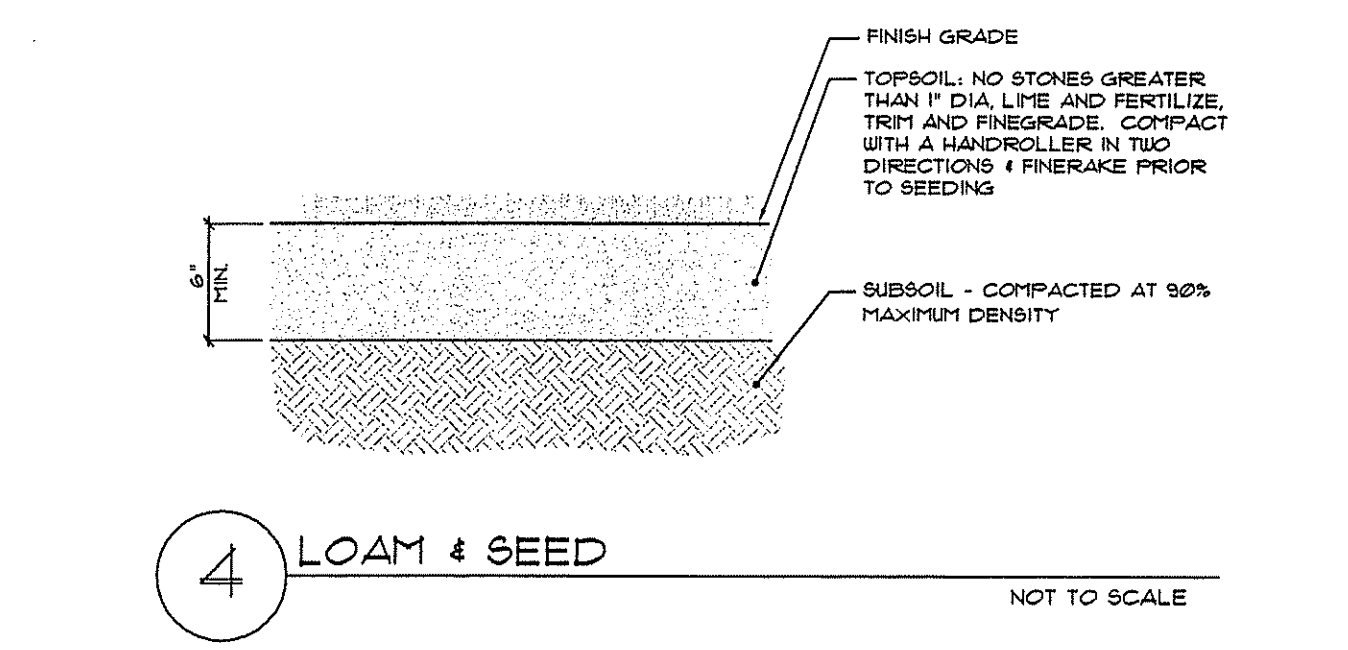
1 EVERGREEN PLANTING & STAKING DETAIL
NOT TO SCALE



2 TREE PLANTING & STAKING DETAIL
NOT TO SCALE



3 SHRUB PLANTING DETAIL
NOT TO SCALE



4 LOAM & SEED
NOT TO SCALE

LEGEND:

---	APPROXIMATE OVERALL PROPERTY LINE
- - -	EDGE OF WATER
---	FLAGGED WETLAND EDGE
---	50 FOOT PERIMETER WETLAND
---	200 FOOT RIVERSIDE WETLAND
---	EXISTING MAJOR CONTOUR LINE
---	EXISTING MINOR CONTOUR LINE
---	EXISTING SPOT GRADE
---	EXISTING TREELINE
---	EXISTING CHAIN LINK FENCE TO REMAIN
---	EXISTING CONCRETE WALLS
---	EXISTING METAL GUARDRAIL
---	LIMIT-OF-DISTURBANCE
---	HAYBALE/SILTATION FENCE
---	EROSION AND SILTATION CONTROL LINE
---	PROPOSED ROOT ZONE PROTECTION
---	PROPOSED TREELINE
---	PROPOSED MAJOR CONTOUR LINE
---	PROPOSED MINOR CONTOUR LINE
---	PROPOSED STONE DUST PATH
---	PROPOSED SPLIT RAIL FENCE
---	BENCH (SEE PLAN FOR LOCATIONS)
---	TRASH RECEPTACLE (SEE PLAN FOR LOCATIONS)
---	CANOE RACK (SEE PLAN FOR LOCATIONS)
---	EXISTING TREES TO REMAIN AND BE PROTECTED WITHIN LIMIT-OF-DISTURBANCE
---	PROPOSED RELOCATED TREE
---	PROPOSED DECIDUOUS TREE
---	PROPOSED SHRUB MASSING

Plant Schedule:

Key	Botanical Name/ Common Name	Size	Qty	Comment
AS	ACER SACCHARUM Sugar Maple	2"-25" Cal.	4	B/B
CA	CLETHRA ALNIFOLIA 'Hummingbird'	2" (2 Gal.)	8	Container Plant 6" o.c. B/B
IV	ILEX VERTICILLATA Winterberry	18"-24"	10	1 1/2" per Planting Plant 6" o.c. B/B
PSK'	PRUNUS SERRULATA 'Kauzani' Kauzani Cherry	2"-25" Cal.	10	Container Plant 6" o.c. B/B
RA'GL'	RUBUS AROMATICUS 'Gro-Lu' Gro-Lu Fragrant Sumac	2" (2 Gal.)	28	Container Plant 6" o.c. B/B
TC	TILIA CORDATA Lime Leaf Linden	2"-25" Cal.	4	B/B
VC	VACCINIUM CORYMBOSUM Highbush Blueberry	18"-24"	16	Plant 6" o.c. B/B
VD	VIBURNUM DENTATUM Arrowwood Viburnum	18"-24"	30	Plant 6" o.c. B/B
VT	VIBURNUM TRICOLORUM American Cranberry Bush	18"-24"	8	Plant 6" o.c. B/B

NOTE:
PLANT SIZES INDICATED WITH A "H" SHALL BE WETLAND RESTORATION GRADE PLANTINGS AS AVAILABLE THROUGH NEW ENGLAND WETLAND PLANTS, Inc. OR APPROVED EQUAL.

LANDSCAPE NOTES:

- PROVIDE A WARRANTY FOR TREE AND SHRUB PLANTINGS FOR A MINIMUM OF ONE (1) YEAR INCLUDING ONE (1) CONTIGUOUS GROWING SEASON. CONFERENCE WARRANTY ON DATE IDENTIFIED IN THE CERTIFICATE OF FINAL COMPLETION.
- REPLACEMENTS: PLANTS OF EQUAL OR GREATER SIZE AND SPECIES AS SPECIFIED PLANTED IN THE NEXT GROWING SEASON WITH NEW WARRANTY AND EXTENDED PLANTING PERIOD UNLESS OTHERWISE APPROVED BY THE A/E. PROVIDED USE OF LARGER PLANTS DOES NOT INCREASE CONTRACT PRICE.
- PLANT MATERIALS SHALL BE OF SIZE AND CALIBER REQUIRED AND COMPLY WITH THE HORTICULTURAL STANDARDS OF THE AMERICAN ASSOCIATION OF NURSERYMEN (ANSI Z602-1) IN ALL RESPECTS.
- PLANTS OF OTHER KINDS THAN THOSE NAMED IN THE PLANT SCHEDULE SHALL NOT BE ACCEPTED WITHOUT APPROVAL. REPLACEMENTS: PLANTS OF EQUAL OR GREATER SIZE THAN EXISTING MAY BE USED IF APPROVED BY THE A/E. PROVIDED USE OF LARGER PLANTS DOES NOT INCREASE CONTRACT PRICE.
- UNLESS OTHERWISE APPROVED BY THE A/E ALL PLANTS SHALL BE NURSERY GROWN IN ACCORDANCE WITH GOOD HORTICULTURAL PRACTICES AND SHALL HAVE BEEN GROWN UNDER CLIMATIC CONDITIONS SIMILAR TO THOSE IN THE LOCALITY OF THE PROJECT FOR AT LEAST TWO (2) YEARS.
- SET PLANTS PLUMP AND AT SUCH A LEVEL THAT AFTER SETTLEMENT THEY BEAR THE SAME RELATION TO THE SURROUNDING GROUND AS THEY BORE TO THE GROUND FROM WHICH THEY WERE DUG. SETTLE BACKFILL MATERIAL FOR PLANTS THOROUGHLY & PROPERLY BY FIRING OR TAMPING. ACCOMPANY BACKFILLING WITH THOROUGH WATERING UNLESS OTHERWISE APPROVED. FORM SAUCER CAPABLE OF HOLDING WATER AROUND INDIVIDUAL PLANTS.
- FERTILIZE SHRUB BEDS WITH 10-6-4 FERTILIZER AT THE RATE OF 3 POUNDS PER 100 SQUARE FEET OF SURFACE AREA (BROAD CAST). APPLY THE FERTILIZER UNIFORMLY TO THE SURFACE BEDS AND WORK INTO THE UPPER TWO (2) INCHES OF SOIL. FERTILIZE INDIVIDUAL TREES AT THE RATE OF ONE (1) AEROSOL PELLETS PER INCH OF TREE DIAMETER FOLLOW MANUFACTURER'S WRITTEN INSTRUCTIONS. APPLY A SECOND APPLICATION OF FERTILIZER TO ALL PLANT ITEMS AT THE SAME SPECIFIED RATES OVER THE MULCH AT THE END OF AN EIGHT WEEK PERIOD.
- CONTAINER GROWN MATERIALS: REMOVE PLANT FROM CONTAINER AND "BUTTERFLY" ROOT BALL OR OTHERWISE SPREAD OUT ROOTS ON SETTING MOUND. BACKFILL SHALL BE SIFTED THROUGH TRIED AND SOLIDLY FIRING.
- AFTER PLANTING PRUNE ONLY BACKED OR DEFORMED BRANCHES AND IN SUCH MANNER AS TO PRESERVE NATURAL CHARACTER OF PLANT.
- IMMEDIATELY AFTER PLANTING STAKE TREES OVER FIVE (5) FEET AS INDICATED ON DETAIL DRAWINGS INDICATED OR APPROVED BY THE OWNER REPRESENTATIVE. REMOVE STAKES AT THE END OF GUARANTEE PERIOD.
- MULCH SHALL BE APPLIED A MINIMUM OF THREE (3) INCHES IN DEPTH IN ALL PLANTING BEDS AS INDICATED ON THE DRAWINGS.
- THE PLANTS SHALL BE WATERED IMMEDIATELY FOLLOWING PLANTING, PREFERABLY WITH TWO THIRDS OF THE BACKFILL HAD BEEN PLACED SO ALL AIR POCKETS ARE REMOVED AND THE PLANT PROPERLY SET. ADDITIONAL WATERING SHALL BE MADE AT LEAST ONCE EVERY THREE (3) WEEKS UNLESS OTHERWISE DIRECTED UNTIL FINAL ACCEPTANCE OF THE PLANT MATERIAL.
- GUARANTEE THAT UPON COMPLETION AND FINAL ACCEPTANCE, TREE SHRUB AND GRASS COVER PLANTING CONFORMS TO REQUIREMENTS OF CONTRACT DOCUMENTS AND THAT ALL PLANTS ARE HEALTHY AND WILL REMAIN SO FOR A PERIOD OF ONE (1) YEAR EACH PERIOD SHALL COMMENCE WITH DATE OF FINAL APPROVAL.
- INSTALL WHITE MESH EROSION CONTROL FABRIC WHERE FINAL GRADES ARE 3:1 (33%) OR GREATER PER MANUFACTURER'S INSTRUCTIONS.
- CONTRACTOR TO LOAM AND SEED ALL DISTURBED AREAS.
- SEEDING NOTE: USE UNIVERSITY OF RHODE ISLAND SEED MIX NO. 2 OR EQUAL.



No:	Revision:	Date:

REFERENCES:
EXISTING CONDITIONS AND TOPOGRAPHY:
EXISTING CONDITIONS PLAN, PLAT 40, LOT 142, JOHNSTON, RHODE ISLAND;
PREPARED FOR: THE GIFFORD DESIGN GROUP, INC.
PREPARED BY: MARC N. NYBERG ASSOCIATES, INC.;
SCALE: 1" = 30', DATED: September 21, 2007
W/Revisions Through JANUARY 24, 2008

APPROXIMATE PROPERTY LINE INFORMATION:
TOWN OF JOHNSTON, R.I. ASSESSOR'S PLAT #40

BASE FLOOD ELEVATION:
FIRM FLOOD INSURANCE RATE MAP, TOWN OF JOHNSTON, RHODE ISLAND, PROVIDENCE COUNTY; PANEL 10 OF 20; COMMUNITY PANEL NUMBER: 440018 0010 C; MAP REVISED: NOVEMBER 17, 1993

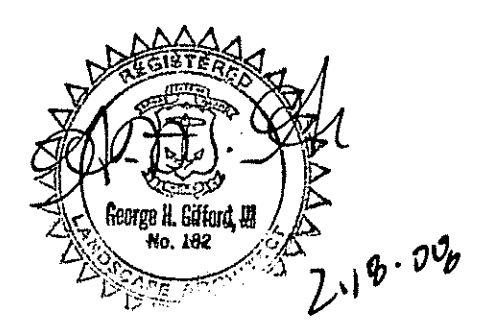


CRICKET FIELD RENOVATION PLAN

A.P. 40, LOT 142
ANGELL STREET
JOHNSTON, RI

PREPARED FOR:
THE WOONASQUATUCKET RIVER WATERSHED COUNCIL

IN ASSOCIATION WITH:
THE TOWN OF JOHNSTON



THE GIFFORD DESIGN GROUP, Inc.
LANDSCAPE ARCHITECTURE
ENVIRONMENTAL PLANNING
4096 MENDON ROAD, CUMBERLAND, RHODE ISLAND 02864
PHONE (401) 671-6336 FAX (401) 671-6465

DEPARTMENT OF ENVIRONMENTAL MANAGEMENT
OFFICE OF WATER RESOURCES
FRESHWATER WETLANDS PERMITTING
APPROVED WITH CONDITIONS
AS SPECIFIED IN THE LETTER OF APPROVAL
DATED **MAR 24 2008** FILE # **08-0042**
NO CHANGES ALLOWED WITHOUT PREVIOUS APPROVAL
APPROVED PLANS MUST BE AT CONSTRUCTION

Mandy L. Freeman

FEB 20 2008

PLANTING PLAN

PROJECT NO. 200.572	DRAWING 3 OF 3
DATE: FEBRUARY 2008	DRAWING NO:
SCALE: 1" = 30'	3
DRAWN BY: KMA, WS	CHECKED BY: KMA, GHG