

FRESHWATER WETLAND VERIFICATION-02-08-06.dwg (DISK: Z-1002)

**LEGEND:**

- AP 9/27 ASSESSOR'S PLAT AND LOT NUMBER
- SEWER MANHOLE
- GAS VALVE
- WATER VALVE
- CATCH BASIN
- DRAIN MANHOLE
- UTILITY POLE
- FIRE HYDRANT
- WF A5 WETLAND DELINEATION FLAG AND NUMBER
- STONE WALL
- CHAIN LINK FENCE
- WIRE FENCE
- STOCKADE FENCE
- DRAIN LINE
- SEWER LINE
- EXISTING CONTOURS
- EDGE OF TREES
- PROPERTY LINE

**REFERENCES:**

- "KAITLIN COURT; FOR A.P.13, LOT 658 COWESETT AVENUE IN WEST WARWICK, RHODE ISLAND; SCALE: 1"=20'; SHEET 1 OF 1; DATE: JULY 7, 2005; BY COMMONWEALTH ENGINEERS & CONSULTANTS, INC."
- "SUBDIVISION FOR A.P. 13, LOT 658; COWESETT AVENUE IN WEST WARWICK, RHODE ISLAND; SCALE 1"=20'; SHEET 1 OF 1; DATE: OCTOBER 5, 2004 BY COMMONWEALTH ENGINEERS & CONSULTANTS, INC."
- "STATE OF RHODE ISLAND DEPARTMENT OF TRANSPORTATION; PLANS OF PROPOSED STATE HIGHWAY RECONSTRUCTION OF COWESETT AVENUE; ROUTE 3; RHODE ISLAND; CONTRACT NO. 2001-GH-068; BY MAGUIRE GROUP INC." APPROVED 10-11-01 BY THE RHODE ISLAND DEPARTMENT OF TRANSPORTATION.

**FLOOD ZONE NOTE:**

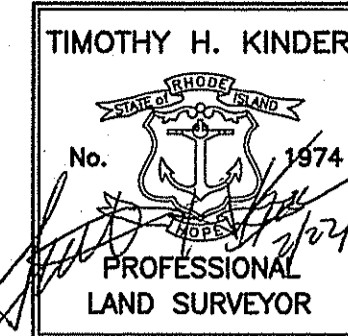
THE SITE LIMITS ARE LOCATED ENTIRELY WITH IN ZONE C: AREAS OF MINIMAL FLOODING AS SHOWN ON FLOOD INSURANCE RATE MAP TOWN OF WEST WARWICK, RHODE ISLAND, KENT COUNTY, PANEL 2 OF 2, COMMUNITY-PANEL NUMBER 440007 0002 B MAP REVISED: APRIL 15, 1986.

**NOTE:**

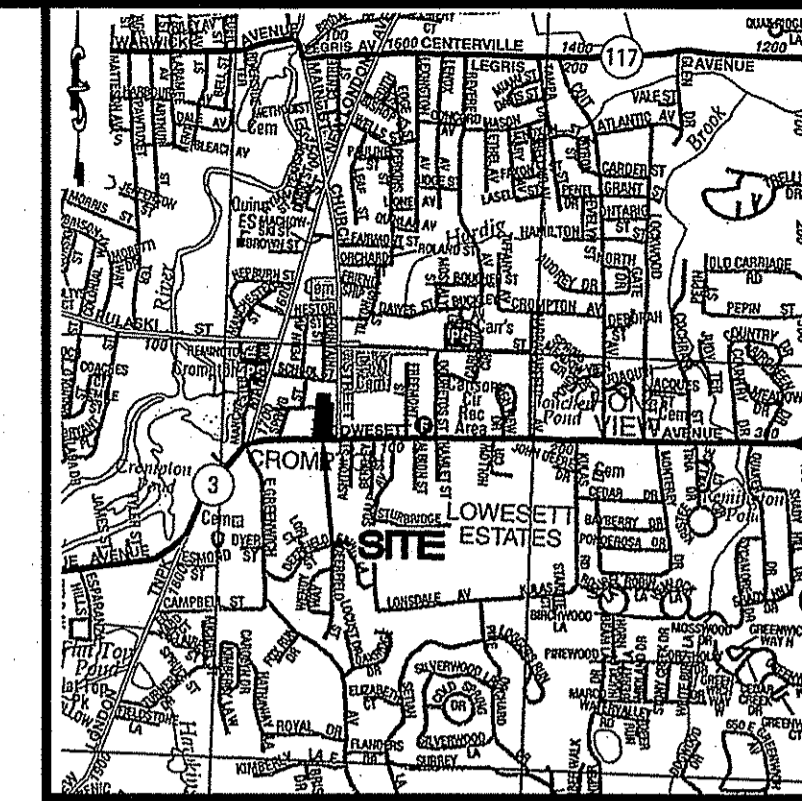
- ALL SITE FEATURES HEREON WERE FIELD SURVEY LOCATED IN JUNE 2007 BY JOHN P. CAITO CORPORATION.
- WETLAND FLAG DELINEATION PERFORMED BY NATURAL RESOURCE SERVICES, INC.

**CERTIFICATION:**

THIS SURVEY AND PLAN CONFORM TO A CLASS III STANDARD AS ADOPTED BY THE RHODE ISLAND BOARD OF REGISTRATION FOR PROFESSIONAL LAND SURVEYORS.

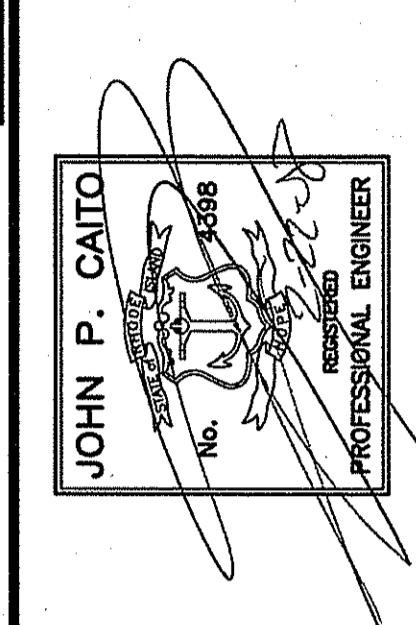


BY *Timothy H. Kinder* 2/22/08  
PROFESSIONAL LAND SURVEYOR DATE



LOCATION MAP  
NOT TO SCALE

NO.	DATE	REVISION

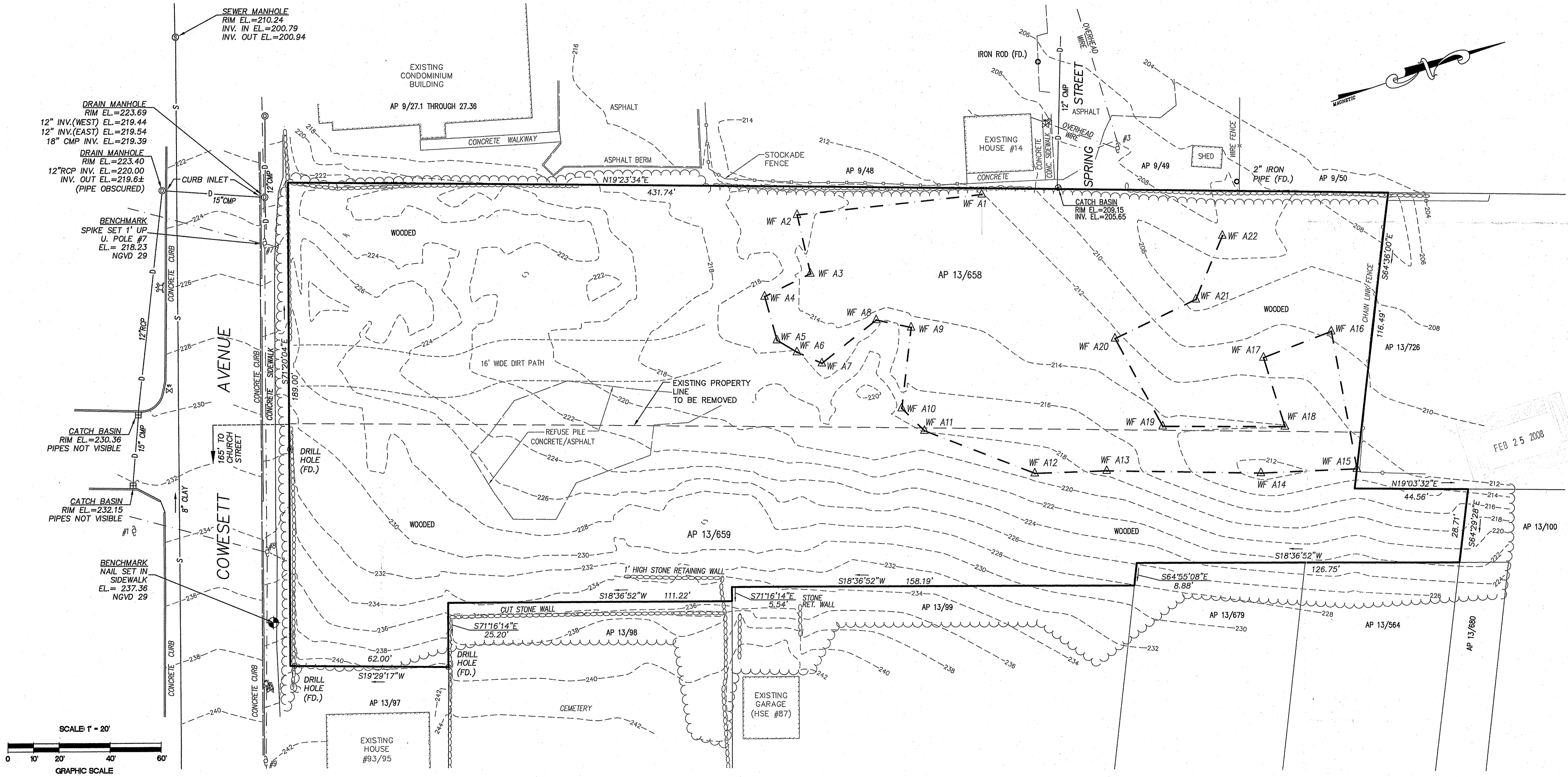


**CAITO CORPORATION**  
LAND PLANNERS  
CIVIL ENGINEERS  
141 JAMES P. MURPHY HIGHWAY  
WEST WARWICK, RHODE ISLAND  
08903-2382  
401-615-8600  
FAX 401-615-8606

PROJECT NO: 101577  
DATE: FEBRUARY 2008  
SCALE: 1" = 20'  
DESIGNED BY: N/A  
DRAWN BY: J.W.P.  
CHECKED BY: J.P.C.

FRESHWATER WETLANDS VERIFICATION PLAN  
ASSESSOR'S PLAT 13, LOT 658 and 659  
WEST WARWICK, RHODE ISLAND  
COWESETT AVENUE  
UNIVERSAL PROPERTIES GROUP, INC.  
PREPARED FOR

DRAWING NUMBER  
**1**  
SHEET 1 OF 1



© 2008 JOHN P. CAITO CORPORATION