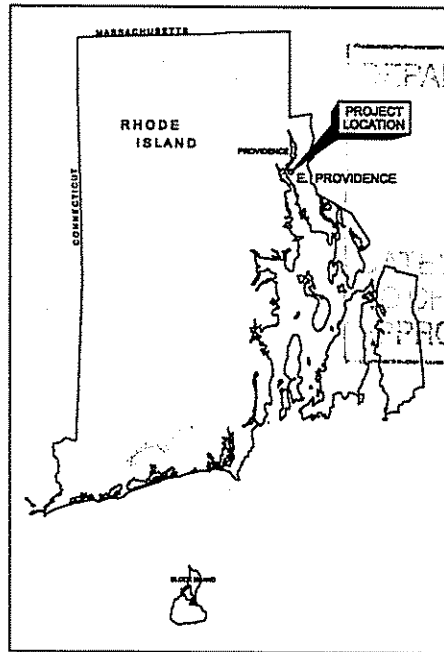


# FISH PASSAGE FACILITY AT TURNER RESERVOIR DAM TEN MILE RIVER, EAST PROVIDENCE, RI

RECEIVED

ENVIRONMENTAL MANAGEMENT  
OFFICE OF WATER RESOURCES

JUL - 3 2008



DEPARTMENT OF ENVIRONMENTAL MANAGEMENT  
OFFICE OF WATER RESOURCES  
FRESHWATER WETLANDS PROGRAM

APPROVED WITH CONDITIONS  
PER THE LETTER OF APPROVAL

OCT 15 2008 FILE # *08-0089*

NO CHANGES ALLOWED WITHOUT PRIOR APPROVAL.  
APPROVED PLANS MUST BE AT CONSTRUCTION SITE.

*Matthew D. Wenczek*

RECEIVED

ENVIRONMENTAL MANAGEMENT  
OFFICE OF WATER RESOURCES

SIGNATURES APPROVED BELOW INDICATE OFFICIAL RECOMMENDATION AND APPROVAL OF ALL CHANGES TO THIS SET AS NOTICED ON SHEET 0-02.

|  |      |
|--|------|
| APPROVED FOR TECHNICAL AGENCY BY:                            | DATE |
| TECHNICAL LEAD ENGINEER                                      | DATE |
| REVIEWED BY:   | DATE |
| CHIEF, RESTORATION/WATER RESOURCES BRANCH                    | DATE |
| REVIEWED BY:   | DATE |
| CHIEF, GEO-ENVIRONMENTAL BRANCH                              | DATE |
| APPROVAL RECOMMENDATION BY:                                  | DATE |
| CHIEF, DES. BR / DEPUTY CHIEF, ENGINEERING/PLANNING DIVISION | DATE |
| APPROVED BY:   | DATE |
| CHIEF, ENGINEERING / PLANNING DIVISION                       | DATE |

This project was designed by the U.S. Army Corps of Engineers. The title or signature and registration identification of individuals appear on these project documents, with the scope of their employment as required by ER 1110-4-6102.

**U.S. ARMY CORPS OF ENGINEERS**  
NEW ENGLAND DISTRICT

|      |    |     |          |     |
|------|----|-----|----------|-----|
| DATE | BY | FOR | REVISION | NO. |
|      |    |     |          |     |
|      |    |     |          |     |
|      |    |     |          |     |
|      |    |     |          |     |

---

|      |    |     |          |     |
|------|----|-----|----------|-----|
| DATE | BY | FOR | REVISION | NO. |
|      |    |     |          |     |
|      |    |     |          |     |
|      |    |     |          |     |
|      |    |     |          |     |

---

U.S. ARMY ENGINEER DISTRICT  
CORPS OF ENGINEERS  
CONCORD, MASSACHUSETTS

TEN MILE RIVER  
EAST PROVIDENCE, RHODE ISLAND  
FISH-PASSAGE FACILITY AT  
TURNER RESERVOIR DAM

COVER SHEET

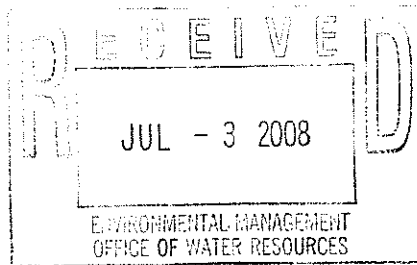
---

SHEET IDENTIFICATION NUMBER  
**G-1**

| LEGEND  |          |                      |
|---------|----------|----------------------|
| NEW     | EXISTING | DESCRIPTION          |
| -X-X-X- | -X-X-X-  | FENCE                |
|         |          | TREE/VEGETATION LINE |
|         |          |                      |
|         |          |                      |

DEPARTMENT OF ENVIRONMENTAL MANAGEMENT  
 OFFICE OF WATER RESOURCES  
 FRESHWATER WETLANDS PROGRAM  
 APPROVED WITH CONDITIONS  
 AS SPECIFIED IN THE LETTER OF APPROVAL  
 DATED OCT 15 2008 FILE # 08-0098  
 NO CHANGES ALLOWED WITHOUT PRIOR APPROVAL.  
 APPROVED PLANS MUST BE AT CONSTRUCTION SITE.

*Christopher D. Wenczek*



**GENERAL NOTES:**

- ALL ELEVATIONS SHOWN REFER TO THE NORTH AMERICAN VERTICAL DATUM OF 1988 (NAVD 88).
- TARGET SPECIES - AMERICAN EEL, AMERICAN SHAD, ALEWIVES, AND BLUE-BACK HERRING.

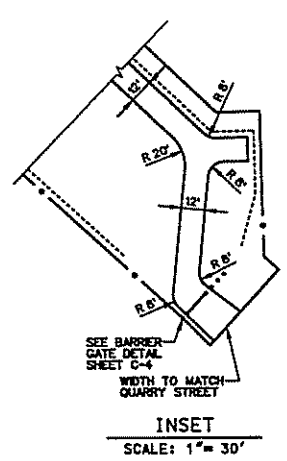
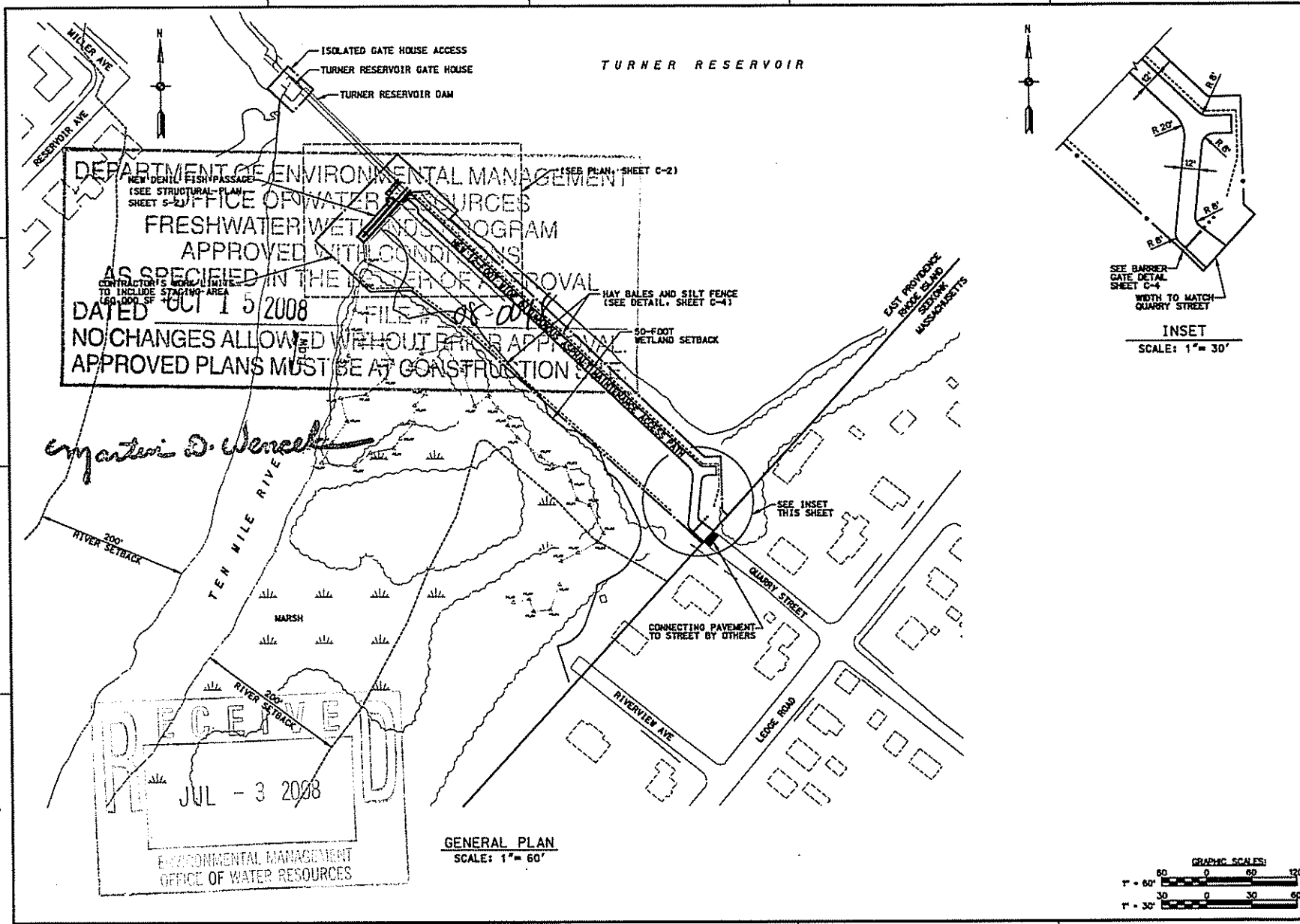
| INDEX TO DRAWINGS |             |  |
|-------------------|-------------|--|
| SHEET NO.         | DESIGN FILE | SHEET TITLE                                  |
| 1                 | 0-1         | TMR0-1.S01 COVER SHEET                       |
| 2                 | 0-2         | TMR0-2.S02 INDEX, LEGEND AND GENERAL NOTES   |
| 3                 | 0-3         | TMR0-3.S03 PROJECT LOCATION MAP              |
| 4                 | C-1         | TMRC-1.S04 GENERAL PLAN                      |
| 5                 | C-2         | TMRC-2.S05 SITE PLAN                         |
| 6                 | C-3         | TMRC-3.S06 SECTIONS                          |
| 7                 | C-4         | TMRC-4.S07 DETAILS                           |
| 8                 | S-1         | TMRS-1.S08 STRUCTURAL NOTES AND LEGEND       |
| 9                 | S-2         | TMRS-2.S09 PLAN AND LOWER RAMP SECTION       |
| 10                | S-3         | TMRS-3.S10 UPPER RAMP SECTION                |
| 11                | S-4         | TMRS-4.S11 STRUCTURAL SECTIONS NO.1          |
| 12                | S-5         | TMRS-5.S12 STRUCTURAL SECTIONS NO.2          |
| 13                | S-6         | TMRS-6.S13 CATWALK FRAMING PLAN AND SECTIONS |
| 14                | S-7         | TMRS-7.S14 STRUCTURAL DETAILS                |
| 15                | S-8         | TMRS-8.S15 DENIL BAFFLES AND STOP LOGS       |
| 16                | S-9         | TMRS-9.S16 OVERLOOK PLATFORM                 |

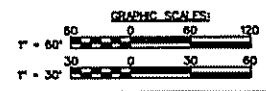
| INFORMATION DRAWINGS |           |   |
|----------------------|-----------|---|
| DRWG NO.             | DATE      | DRAWING TITLE                             |
| B-2                  | JAN. 1981 | JAMES V. TURNER RESERVOIR DAM - PLAN      |
| B-3                  | JAN. 1981 | JAMES V. TURNER RESERVOIR DAM - ELEVATION |
| B-4                  | JAN. 1981 | JAMES V. TURNER RESERVOIR DAM - SECTIONS  |

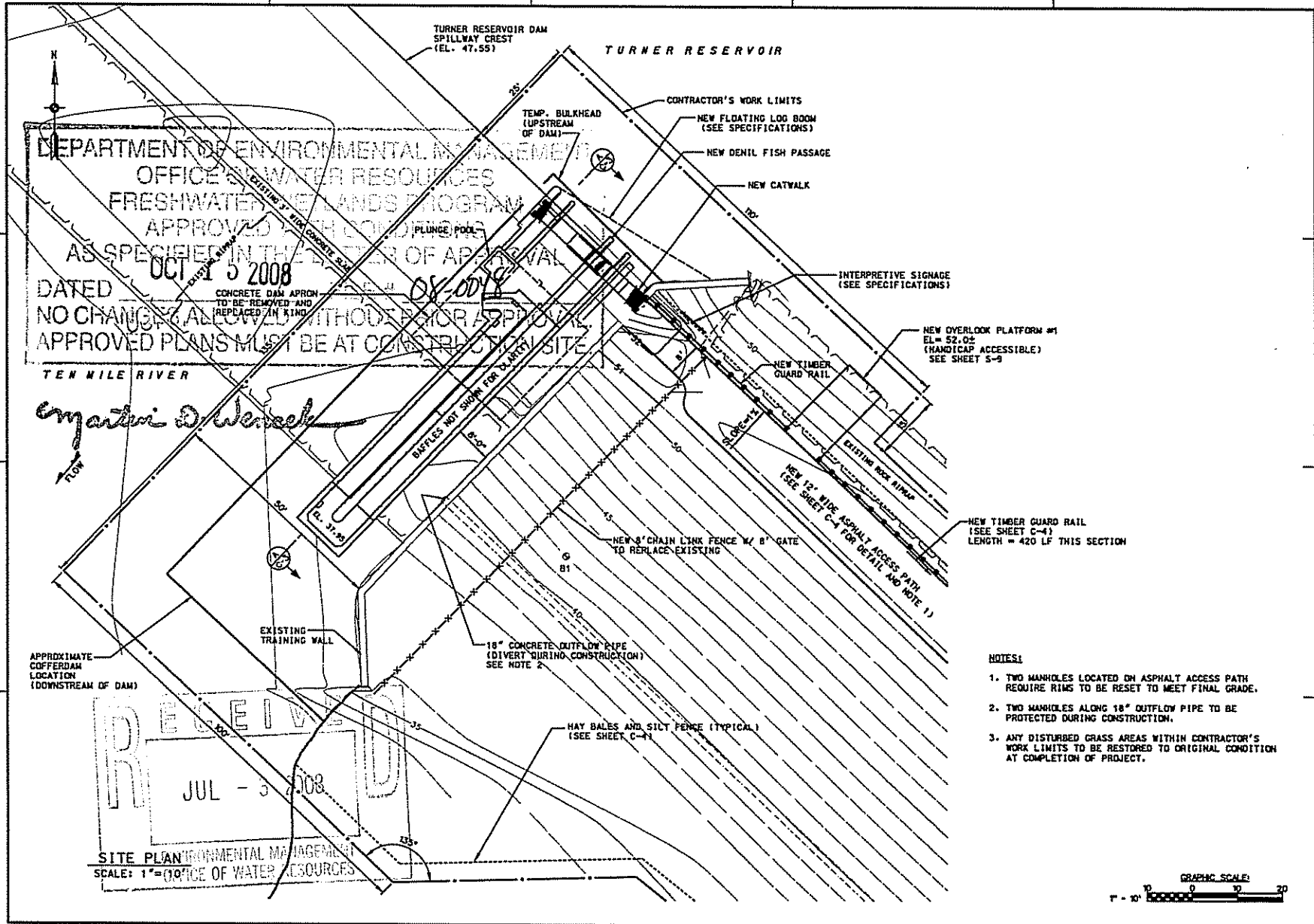
|   |   |
|---|---|
| <br>US ARMY CORPS OF ENGINEERS<br>NEW ENGLAND DISTRICT                      |   |
| DRAWN BY: _____<br>CHECKED BY: _____<br>DATE: _____                         | SCALE: _____<br>SHEET NO.: _____<br>TOTAL SHEETS: _____   |
| U.S. ARMY ENGINEER DISTRICT<br>CORPS OF ENGINEERS<br>CONCORD, MASSACHUSETTS | EAST PRODUCE FRACTION ISLAND<br>FRESHWATER FACILITY AT<br>TURNER RESERVOIR DAM<br>INDEX, LEGEND AND GENERAL NOTES |
| SHEET IDENTIFICATION NUMBER<br><b>C-2</b>                                   |   |





|   |                               |
|---|-------------------------------|
| <br>US ARMY CORPS OF ENGINEERS<br>NEW ENGLAND DISTRICT  |                               |
| PROJECT NO.<br>DRAWING NO.<br>SHEET NO.   | DATE<br>SCALE<br>PROJECT NAME |
| U.S. ARMY ENGINEER DISTRICT<br>CORPS OF ENGINEERS<br>DISTRICT HEADQUARTERS<br>1111 SOUTH STREET<br>WASHINGTON, D.C. 20315-5000<br>TEL: (202) 755-6000<br>FAX: (202) 755-6000<br>WWW: www.usace.army.mil |                               |
| TEN MILE RIVER<br>EAST PROVIDENCE ROCKE ISLAND<br>FISH PASSAGE FACILITY AT<br>TURNER RESERVOIR DAM<br>GENERAL PLAN  |                               |
| SHEET IDENTIFICATION NUMBER<br><b>C-1</b>   |                               |





DEPARTMENT OF ENVIRONMENTAL MANAGEMENT  
 OFFICE OF WATER RESOURCES  
 FRESHWATER WETLANDS PROGRAM  
 APPROVED WITH CONDITIONS  
 AS SPECIFIED IN THE LETTER OF APPROVAL  
 DATED OCT 15 2008  
 CONCRETE DAM APRON  
 TO BE REMOVED AND  
 REPLACED IN KIND  
 NO CHANGES ALLOWED WITHOUT PRIOR APPROVAL  
 APPROVED PLANS MUST BE AT CONSTRUCTION SITE

*Ernest D. Wenzel*  
 FLOW

RECEIVED  
 JUL - 5 - 2008  
 SITE PLAN ENVIRONMENTAL MANAGEMENT  
 SCALE: 1" = 10' (OFFICE OF WATER RESOURCES)

- NOTES:
1. TWO MANHOLES LOCATED ON ASPHALT ACCESS PATH REQUIRE RIMS TO BE RESET TO MEET FINAL GRADE.
  2. TWO MANHOLES ALONG 18" OUTFLOW PIPE TO BE PROTECTED DURING CONSTRUCTION.
  3. ANY DISTURBED GRASS AREAS WITHIN CONTRACTOR'S WORK LIMITS TO BE RESTORED TO ORIGINAL CONDITION AT COMPLETION OF PROJECT.



U.S. ARMY CORPS OF ENGINEERS  
 NEW ENGLAND DISTRICT

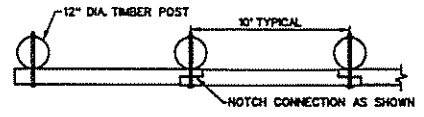
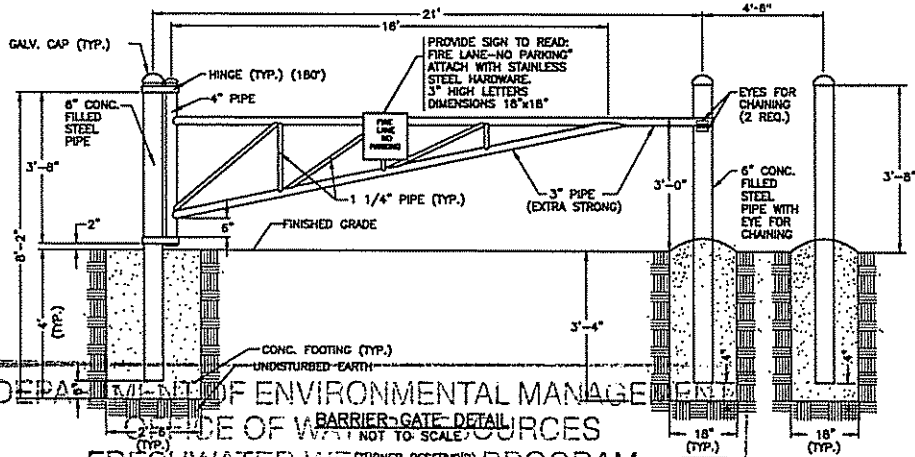
|             |             |      |
|-------------|-------------|------|
| DESIGNED BY | CHECKED BY  | DATE |
| DRAWN BY    | APPROVED BY |      |
| SCALE       | PROJECT NO. |      |
|             |             |      |

U.S. ARMY ENGINEER DISTRICT  
 CORPS OF ENGINEERS  
 CONCORD, MASSACHUSETTS

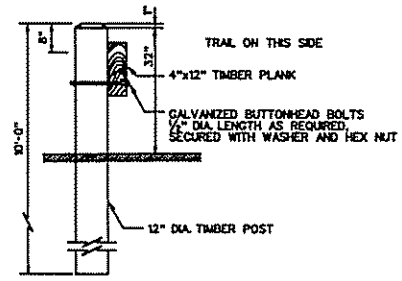
TEN MILE RIVER  
 EAST PROVIDENCE, RHODE ISLAND  
 FISH PASSAGE FACILITY AT  
 TURNER RESERVOIR DAM

SHEET IDENTIFICATION NUMBER  
 C-2



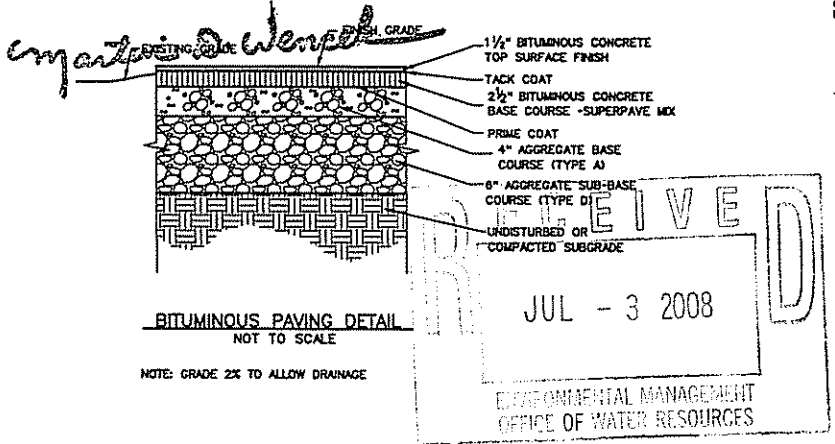


TIMBER GUARD RAIL PLAN VIEW  
NOT TO SCALE

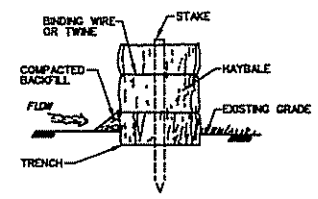


TIMBER GUARD RAIL ELEVATION VIEW  
NOT TO SCALE

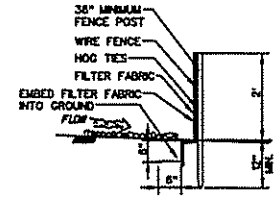
DEPARTMENT OF ENVIRONMENTAL MANAGEMENT  
OFFICE OF WATER RESOURCES  
FRESHWATER WETLANDS PROGRAM  
APPROVED WITH CONDITIONS  
AS SPECIFIED IN THE LETTER OF APPROVAL  
DATED OCT 15 2008 FILE # 08-6098  
NO CHANGES ALLOWED WITHOUT PRIOR APPROVAL.  
APPROVED PLANS MUST BE AT CONSTRUCTION SITE.



BITUMINOUS PAVING DETAIL  
NOT TO SCALE



STAKED HAY BALES



SILT FENCE

NOTES:

1. EXCAVATE A TRENCH 4" DEEP AND THE WIDTH OF A HAY BALE.
2. PLACE AND STAKE HAY BALES. TWO STAKES PER BALE.
3. WEDGE LOOSE HAY BALES TO CREATE A CONTINUOUS BARRIER.
4. BACKFILL AND COMPACT THE EXCAVATED SOIL AS SHOWN ON THE UPHILL SIDE OF THE BARRIER TO PREVENT PIPING.

EROSION AND SEDIMENTATION CONTROL  
NOT TO SCALE

U.S. ARMY CORPS OF ENGINEERS  
NEW ENGLAND DISTRICT

|      |       |             |           |
|------|-------|-------------|-----------|
| DATE | SCALE | PROJECT NO. | SHEET NO. |
|      |       |             |           |

U.S. ARMY ENGINEER DISTRICT  
CORPS OF ENGINEERS  
CONCORD MASSACHUSETTS

TERMINAL RIVER  
EAST PROVIDENCE, RHODE ISLAND  
FRESHWATER FACILITY AT  
TURNER RESERVOIR DAM

DETAILS

SHEET IDENTIFICATION NUMBER  
C-4

**STRUCTURAL NOTES:**

**CONCRETE:**

1. MATERIAL PROPERTIES:  
CONCRETE -  $f_c = 4000$  PSI  
REINFORCING STEEL -  $f_y = 60,000$  PSI
2. MINIMUM CONCRETE COVER OVER REINFORCEMENT SHALL BE 3". UNLESS NOTED OTHERWISE.
3. CHAMFER EXPOSED CORNERS 1"x45", UNLESS NOTED OTHERWISE.
4. CONSTRUCTION JOINTS SHALL BE MADE AS INDICATED. NO JOINTS SHALL BE ADDED OR DELETED UNLESS APPROVED BY THE CONTRACTING OFFICER'S REPRESENTATIVE.
5. CANTILEVER PORTIONS OF THE STRUCTURE SHALL BE PLACED USING SHORED CONSTRUCTION METHODS. SHORING SHALL BE DESIGNED FOR FULL DEAD LOAD PLUS LIVE LOAD OF WORKMEN AND EQUIPMENT.
6. CONCRETE PLACEMENT SEQUENCE FOR CANTILEVER PORTIONS OF THE STRUCTURE SHALL BE SUCH THAT THE DEAD LOADS DO NOT CREATE AN UNBALANCED OVERTURNING CONDITION AT THE CENTER WALL. SHORING SHALL REMAIN IN PLACE UNTIL THE RAMPS ON BOTH SIDES OF THE CENTER WALL HAVE ATTAINED A MINIMUM CONCRETE COMPRESSIVE STRENGTH OF 3,000 PSI.

**STEEL:**

7. STRUCTURAL STEEL SHAPES AND PLATES SHALL CONFORM TO ASTM A 36.
8. EMBEDDED STEEL ITEMS SHALL BE HOT-DIP GALVANIZED AFTER FABRICATION.
9. ALL STRUCTURAL STEEL SHALL BE PAINTED IN THE SHOP. TOUCH-UP PAINT FIELD WELDED AREAS.





**TIMBER:**

10. PRESSURE TREATMENT SHALL BE WITH ALKALINE COPPER QUAT (ACQ) PRESERVATIVE. RETENTION SHALL BE 0.25 PCF FOR DIMENSIONAL LUMBER AND 0.60 PCF FOR PILING.
11. ALL CONNECTION PLATES, BOLTS, AND NAILS SHALL BE GALVANIZED.
12. SECURE DECKING TO STRINGERS WITH STAINLESS STEEL LAG SCREWS.

**ABBREVIATIONS:**

|          |                                       |
|----------|---------------------------------------|
| C.J.     | CONSTRUCTION JOINT                    |
| DIA.     | DIAMETER                              |
| E.F.     | EACH FACE                             |
| EL.      | ELEVATION                             |
| EXIST.   | EXISTING                              |
| EXP. JT. | EXPANSION JOINT                       |
| $f_c$    | SPECIFIED 28-DAY COMPRESSIVE STRENGTH |
| $f_y$    | YIELD STRENGTH                        |
| GALV.    | GALVANIZED                            |
| HORIZ.   | HORIZONTAL                            |
| MIN.     | MINIMUM                               |
| O.C.     | ON CENTER                             |
| PCF      | POUNDS PER CUBIC FOOT                 |
| PSI      | POUNDS PER SQUARE INCH                |
| P.T.     | PRESSURE TREATED                      |
| R.       | RADIUS                                |
| REQ'D    | REQUIRED                              |
| STD.     | STANDARD                              |
| TYP.     | TYPICAL                               |
| VERT.    | VERTICAL                              |
| W/       | WITH                                  |


**SYMBOLS:**

|   |                   |
|---|-------------------|
|  | EARTH LINE        |
|  | REINFORCING STEEL |
|  | ROCK LINE         |
|  | FLOW DIRECTION    |

DEPARTMENT OF ENVIRONMENTAL MANAGEMENT  
 OFFICE OF WATER RESOURCES  
 FRESHWATER WETLANDS PROGRAM  
 APPROVED WITH CONDITIONS  
 AS SPECIFIED IN THE LETTER OF APPROVAL  
 DATED OCT 15 2008 FILE # 08-0088  
 NO CHANGES ALLOWED WITHOUT PRIOR APPROVAL.  
 APPROVED PLANS MUST BE AT CONSTRUCTION SITE.

*Christopher D. Wencsek*

**RECEIVED**  
 JUL - 3 2008  
 ENVIRONMENTAL MANAGEMENT  
 OFFICE OF WATER RESOURCES

  
 LICENSED PROFESSIONAL ENGINEER  
 CIVIL ENGINEERING  
 STATE OF MASSACHUSETTS

|              |      |       |
|--------------|------|-------|
| PROJECT NO.  | DATE | SCALE |
| CONTRACT NO. | DATE | SCALE |
| CONTRACTOR   | DATE | SCALE |
| DESIGNER     | DATE | SCALE |
| CHECKED      | DATE | SCALE |
| APPROVED     | DATE | SCALE |

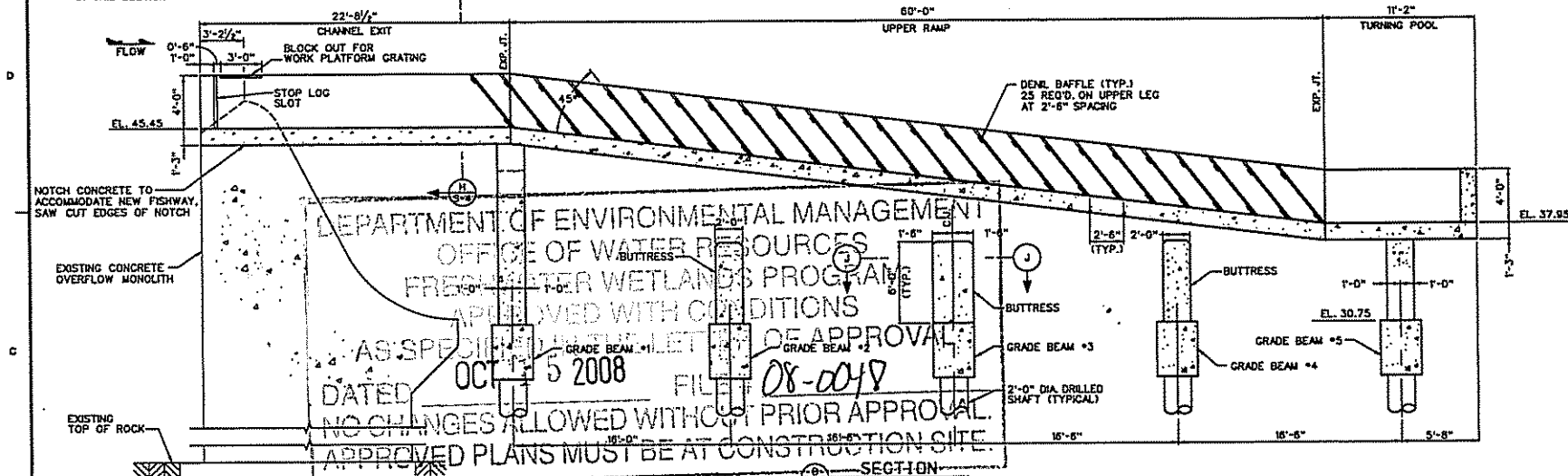
U.S. ARMY CORPS OF ENGINEERS  
 CONCORD, MASSACHUSETTS  
 PROJECT NO. 08-0088  
 SHEET NO. 08-0088-01  
 DATE: OCT 15 2008

TURNER RESERVOIR DAM  
 EAST PROVIDENCE, BRIDGE ISLAND  
 FISH PASSAGE FACILITY AT  
 TURNER RESERVOIR DAM  
 STRUCTURAL NOTES AND LEGEND

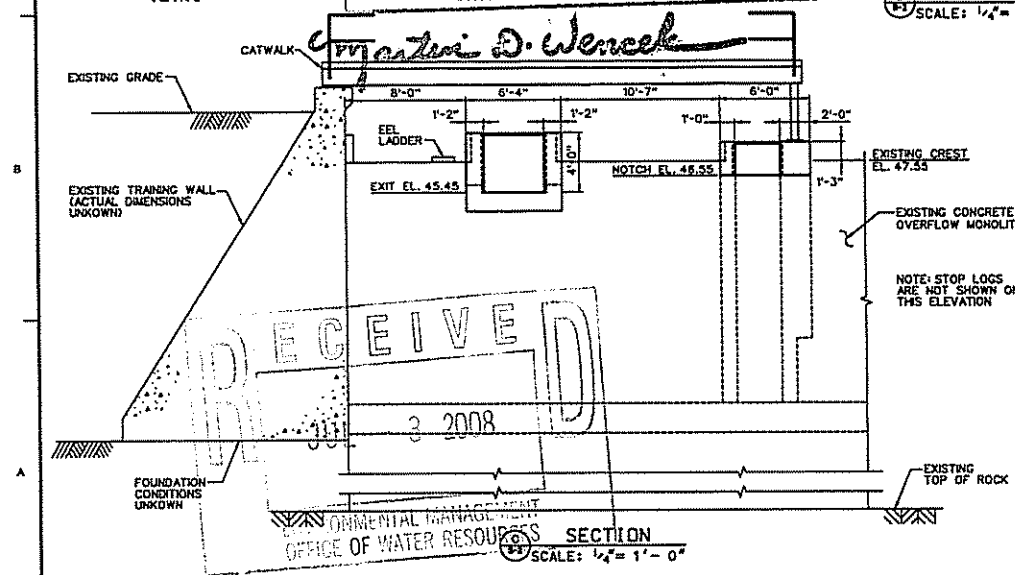
SHEET IDENTIFICATION NUMBER  
 08-0088-01



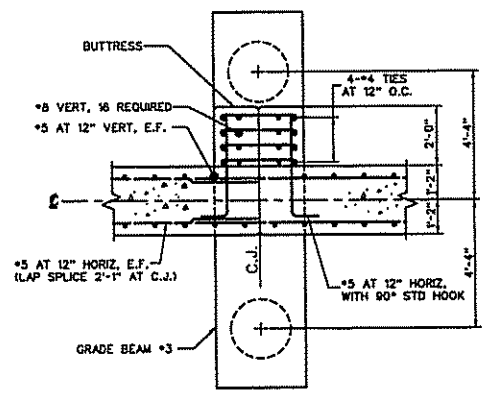
NOTE: CATWALK IS NOT SHOWN IN THIS SECTION



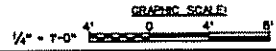
SECTION I-I  
SCALE: 1/4" = 1'-0"



SECTION J-J  
SCALE: 1/4" = 1'-0"



SECTION J-J  
SCALE: 1/2" = 1'-0"

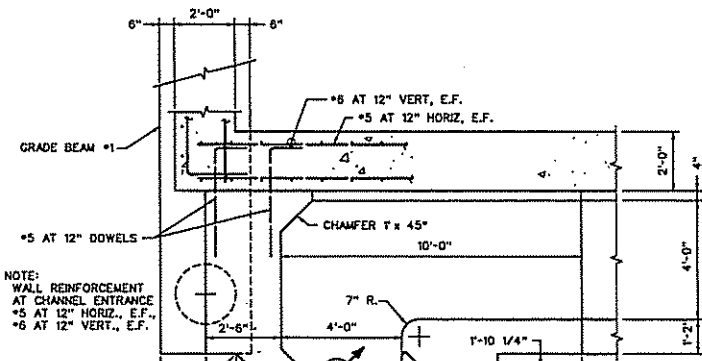


DEPARTMENT OF ENVIRONMENTAL MANAGEMENT  
OFFICE OF WATER RESOURCES  
FRESHWATER WETLANDS PROGRAM  
APPROVED WITH CONDITIONS  
AS SPECIFIED IN THE LETTER OF APPROVAL  
DATED OCT 15 2008 FILE # 08-0018  
NO CHANGES ALLOWED WITHOUT PRIOR APPROVAL  
APPROVED PLANS MUST BE AT CONSTRUCTION SITE

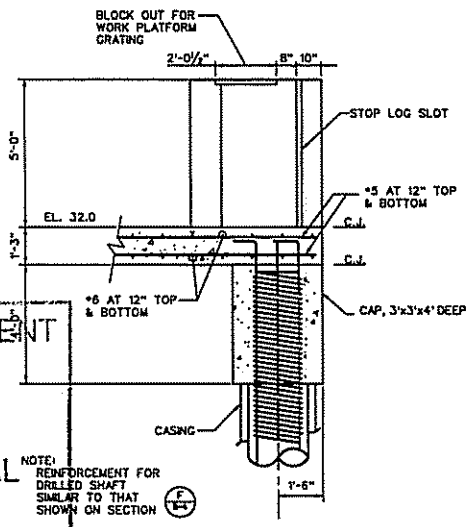
RECEIVED  
3 2008

|   |   |
|---|---|
|   |   |
| PROJECT NO.: 08-0018<br>SHEET NO.: 3-3<br>DATE: 10/15/08                                    | DRAWN BY: JAW<br>CHECKED BY: JAW<br>CONTRACT NO.:<br>PROJECT NAME: EAST PROVIDENCE FACILITY AT TURBENT RESERVOIR DAM<br>SHEET TITLE: UPPER RAMP SECTION |
| U.S. ENVIRONMENTAL PROTECTION AGENCY<br>OFFICE OF WATER RESOURCES<br>CONCORD, MASSACHUSETTS |   |
| SHEET IDENTIFICATION NUMBER<br>S-3  |   |





NOTE:  
WALL REINFORCEMENT  
AT CHANNEL ENTRANCE  
#5 AT 12" HORIZ. E.F.  
#6 AT 12" VERT. E.F.

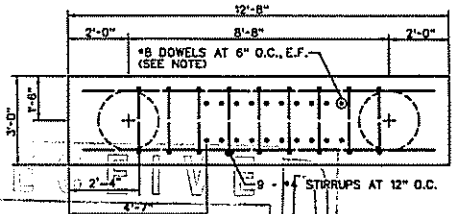


NOTE:  
REINFORCEMENT FOR  
DRILLED SHAFT  
SIMILAR TO THAT  
SHOWN ON SECTION

SECTION M-M  
SCALE: 1/2" = 1'-0"

DEPARTMENT OF ENVIRONMENTAL MANAGEMENT  
OFFICE OF WATER RESOURCES  
WETLANDS PROGRAM  
APPROVED WITH CONDITIONS  
OCT 15 2008  
DATED 12-6-08 FILE # 08-0048  
NO CHANGES ALLOWED WITHOUT PRIOR APPROVAL.  
APPROVALS MUST BE AT CONSTRUCTION SITE.

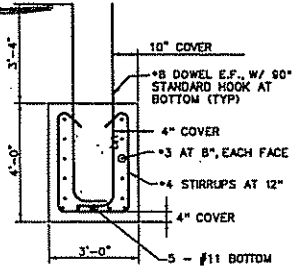
*Christopher D. Wenzel*



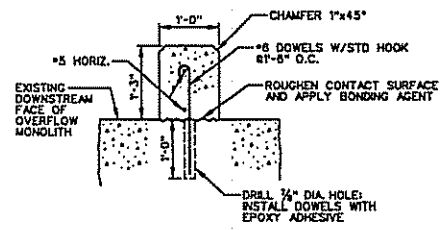
NOTE:  
DOWEL PATTERN SHOWN  
IS FOR GRADE BEAM #5;  
PATTERN VARIES AT  
OTHER LOCATIONS

2008 PLAN

ENVIRONMENTAL MANAGEMENT OFFICE OF WATER RESOURCES  
TYPICAL GRADE BEAM DETAIL  
SCALE: 1/2" = 1'-0"



SECTION



SECTION  
SCALE: 1" = 1'-0"



|      |    |         |          |
|------|----|---------|----------|
| DATE | BY | CHECKED | APPROVED |
|      |    |         |          |
|      |    |         |          |
|      |    |         |          |
|      |    |         |          |
|      |    |         |          |
|      |    |         |          |
|      |    |         |          |
|      |    |         |          |
|      |    |         |          |

|             |            |      |
|-------------|------------|------|
| DESIGNED BY | CHECKED BY | DATE |
|             |            |      |
|             |            |      |
|             |            |      |
|             |            |      |
|             |            |      |
|             |            |      |
|             |            |      |
|             |            |      |
|             |            |      |

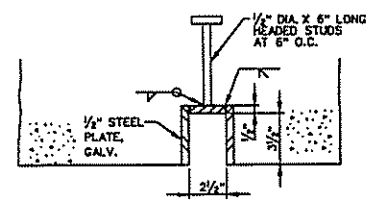
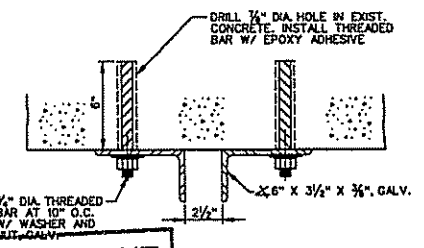
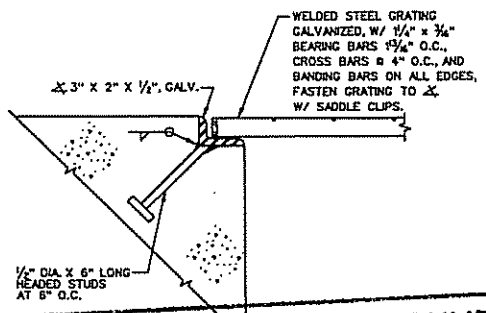
U.S. ARMY ENGINEER DISTRICT  
CORPS OF ENGINEERS  
CONCORD, MASSACHUSETTS

TEN MILE RIVER  
EAST PROVIDENCE, RHODE ISLAND  
FISH PRODUCE FACILITY AT  
TURNER RESERVOIR DAM

STRUCTURAL SECTIONS NO. 2

SHEET IDENTIFICATION NUMBER  
S-5

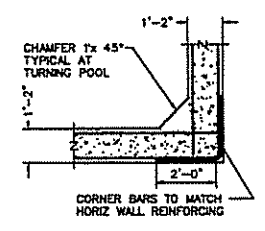
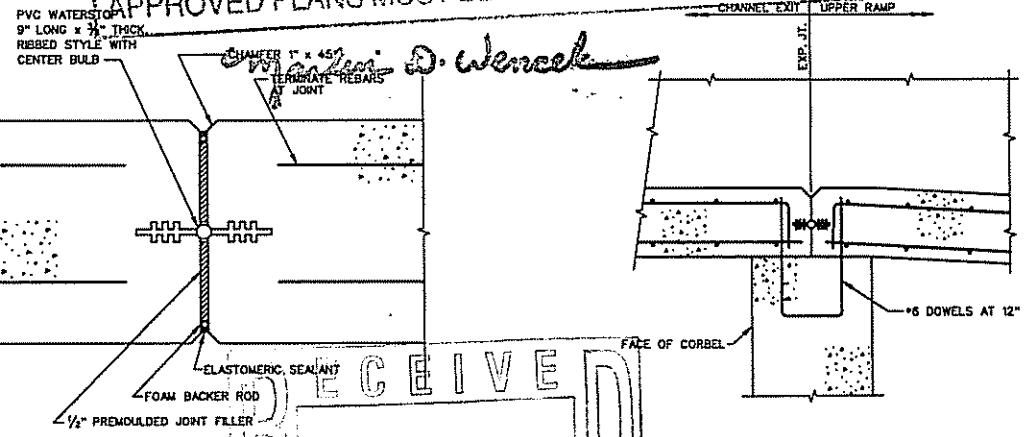




DEPARTMENT OF ENVIRONMENTAL MANAGEMENT  
 OFFICE OF WATER RESOURCES  
 WORK PLATFORM GRATING DETAIL  
 SCALE: 3" = 1'-0"

APPROVED WITH CONDITIONS  
 AS SPECIFIED IN THE LETTER OF APPROVAL  
 DATED OCT 15 2008 FILE # 08-0048  
 NO CHANGES ALLOWED WITHOUT PRIOR APPROVAL.  
 APPROVED PLANS MUST BE AT CONSTRUCTION SITE.

STOP LOG SLOT DETAILS  
 SCALE: 3" = 1'-0"

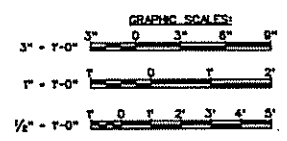


TYPICAL CORNER DETAIL  
 SCALE: 1/2" = 1'-0"

EXPANSION JOINT DETAIL  
 SCALE: 3" = 1'-0"

CONNECTION DETAIL  
 AT CORBEL  
 SCALE: 1" = 1'-0"

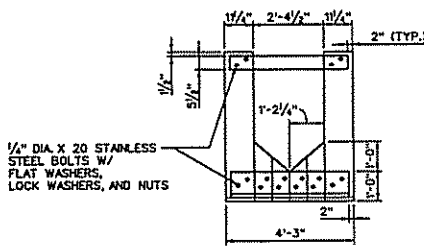
RECEIVED  
 JUL - 3 2008  
 ENVIRONMENTAL MANAGEMENT  
 OFFICE OF WATER RESOURCES



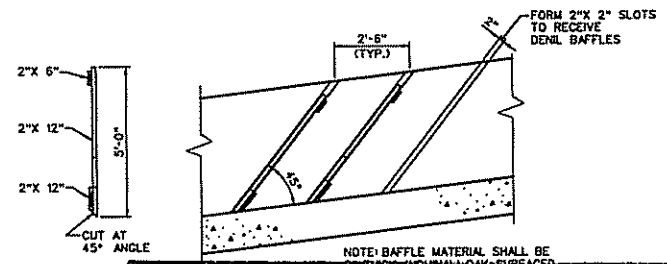
UNIVERSITY OF MASSACHUSETTS  
 COLLEGE OF ENGINEERING  
 CIVIL ENGINEERING  
 EAST PROVERENCE, MASSACHUSETTS 01929

PROJECT: TEN MILE RIVER  
 EAST PROVERENCE, MASSACHUSETTS  
 UPPER RESEARCH DAM

SHEET IDENTIFICATION NUMBER: S-7



ELEVATION



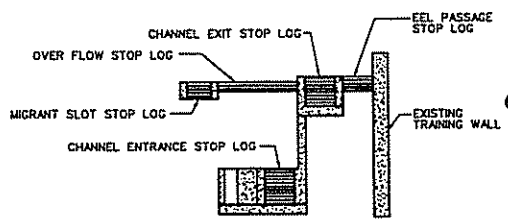
SIDE VIEW

| DENIL BAFFLE SCHEDULE |              |        |
|-----------------------|--------------|--------|
| LOCATION              | NO. REQUIRED | LENGTH |
| UPPER RAMP            | 25           | 5'-0"  |
| LOWER RAMP            | 20           | 5'-0"  |

NOTE: BAFFLE MATERIAL SHALL BE 2" THICK NOMINAL OAK SURFACED SIDES

DEPARTMENT OF ENVIRONMENTAL MANAGEMENT  
 OFFICE OF WATER RESOURCES  
 FRESHWATER WETLANDS PROGRAM  
 APPROVED WITH CONDITIONS  
 AS SPECIFIED IN THE LETTER OF APPROVAL  
 DATED OCT 15 2008 FILE # 08-0048  
 NO CHANGES ALLOWED WITHOUT PRIOR APPROVAL.  
 APPROVED PLANS MUST BE AT CONSTRUCTION SITE.

DENIL BAFFLE DETAILS  
 SCALE: 1/2" = 1'-0"



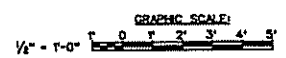
STOP LOG DIAGRAM  
 NOT TO SCALE

| STOP LOG SCHEDULE |       |              |       |             |       |              |       |                  |       |
|-------------------|-------|--------------|-------|-------------|-------|--------------|-------|------------------|-------|
| OVER FLOW         |       | CHANNEL EXIT |       | EEL PASSAGE |       | MIGRANT SLOT |       | CHANNEL ENTRANCE |       |
| LENGTH            | REQ'D | LENGTH       | REQ'D | LENGTH      | REQ'D | LENGTH       | REQ'D | LENGTH           | REQ'D |
| 12'-0"            | 3     | 4'-8"        | 8     | 8'-3"       | 5     | 3'-6"        | 4     | 3'-0"            | 10    |

NOTE: STOP LOGS SHALL BE 2" X 6" ROUGH CUT OAK (FULL DIMENSION)

*Christopher D. Wencel*

RECEIVED  
 JUL - 3 2008  
 ENVIRONMENTAL MANAGEMENT  
 OFFICE OF WATER RESOURCES



U.S. ARMY CORPS OF ENGINEERS  
 NEW ENGLAND DISTRICT

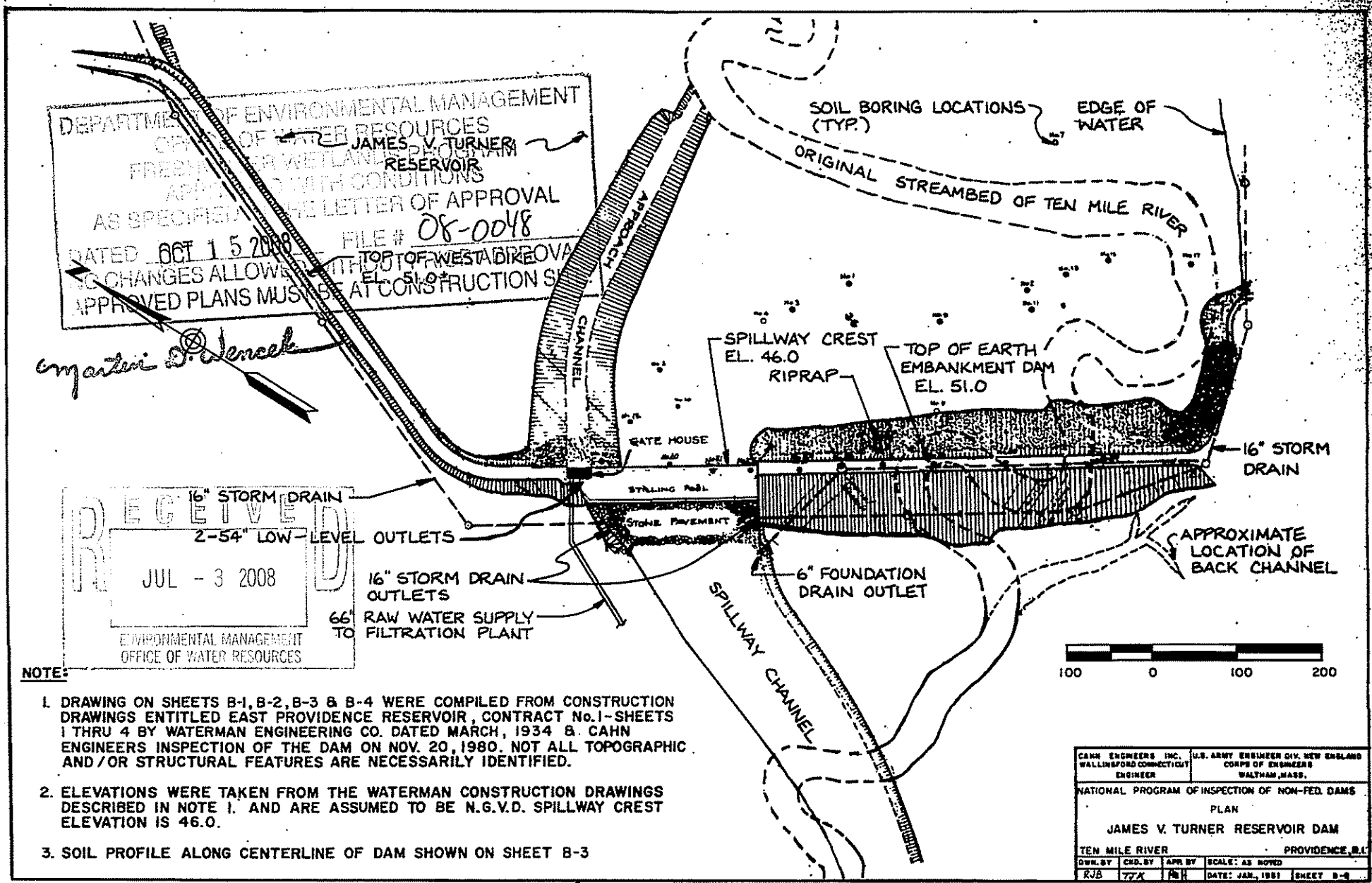
U.S. ARMY DISTRICT OFFICE  
 CORP. OF ENGINEERS  
 CONCORD, MASSACHUSETTS

DATE: \_\_\_\_\_ TIME: \_\_\_\_\_  
 DRAWN BY: \_\_\_\_\_ CHECKED BY: \_\_\_\_\_  
 DESIGNED BY: \_\_\_\_\_ APPROVED BY: \_\_\_\_\_  
 PROJECT NAME: \_\_\_\_\_ SHEET NO.: \_\_\_\_\_

TEN MILE POINT ISLAND  
 EAST PASSAGE FACILITY AT  
 TURNER RESERVOIR DAM  
 DENIL BAFFLES AND STOP LOGS

SHEET IDENTIFICATION NUMBER  
 C-8





DEPARTMENT OF ENVIRONMENTAL MANAGEMENT  
 OFFICE OF WATER RESOURCES  
 FRESHWATER WETLANDS PROGRAM  
 APPROVED WITH CONDITIONS  
 AS SPECIFIED IN THE LETTER OF APPROVAL  
 DATED OCT 15 2008 FILE # 08-0048  
 NO CHANGES ALLOWED WITHOUT THE  
 APPROVED PLANS MUST BE AT CONSTRUCTION SITE

*Ernest D. Jencel*

RECEIVED  
 JUL - 3 2008  
 ENVIRONMENTAL MANAGEMENT  
 OFFICE OF WATER RESOURCES

**NOTE:**

1. DRAWING ON SHEETS B-1, B-2, B-3 & B-4 WERE COMPILED FROM CONSTRUCTION DRAWINGS ENTITLED EAST PROVIDENCE RESERVOIR, CONTRACT No. 1-SHEETS 1 THRU 4 BY WATERMAN ENGINEERING CO. DATED MARCH, 1934 & CAHN ENGINEERS INSPECTION OF THE DAM ON NOV. 20, 1980. NOT ALL TOPOGRAPHIC AND/OR STRUCTURAL FEATURES ARE NECESSARILY IDENTIFIED.
2. ELEVATIONS WERE TAKEN FROM THE WATERMAN CONSTRUCTION DRAWINGS DESCRIBED IN NOTE 1. AND ARE ASSUMED TO BE N.G.V.D. SPILLWAY CREST ELEVATION IS 46.0.
3. SOIL PROFILE ALONG CENTERLINE OF DAM SHOWN ON SHEET B-3

|  |   |
|--|---|
| CAHN ENGINEERS INC.<br>WALLINGFORD CONNECTICUT<br>ENGINEER | U.S. ARMY ENGINEER DIV. NEW ENGLAND<br>CORPS OF ENGINEERS<br>WALTHAM, MASS. |
| NATIONAL PROGRAM OF INSPECTION OF NON-FED. DAMS            |   |
| PLAN   |   |
| JAMES V. TURNER RESERVOIR DAM                              |   |
| TEN MILE RIVER   | PROVIDENCE, R.I.  |
| DWN. BY<br>RJB   | CHK. BY<br>TAX  |
| APP. BY<br>PHH   | SCALE: AS NOTED   |
| DATE: JAN., 1981   | SHEET B-2   |



