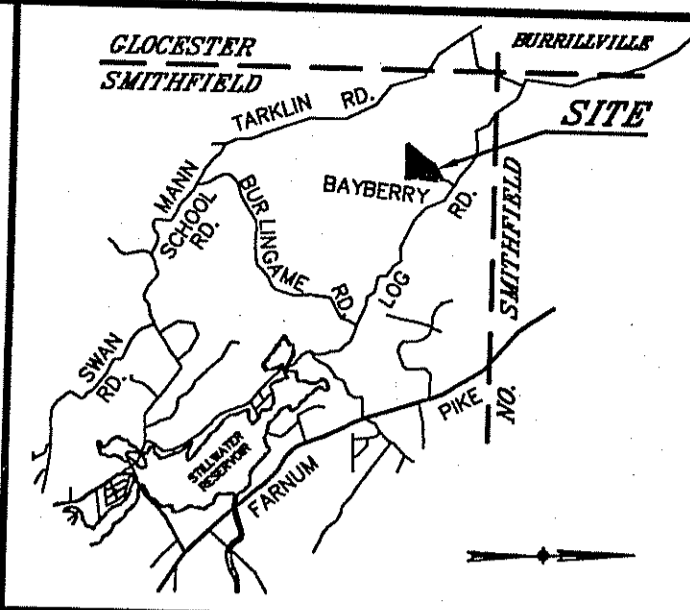


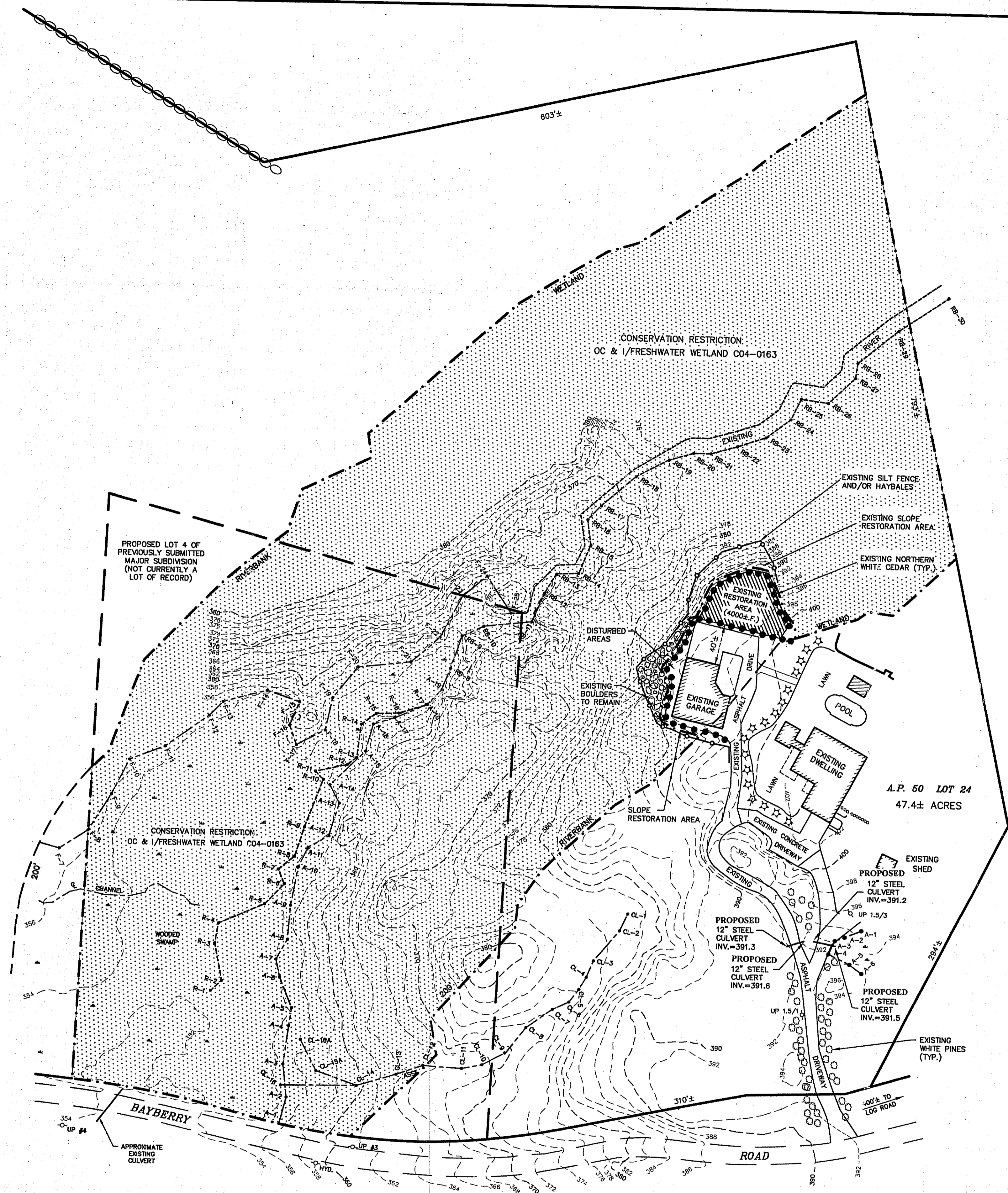
KEY MAP  
(NOT TO SCALE)



LOCUS MAP  
NOT TO SCALE

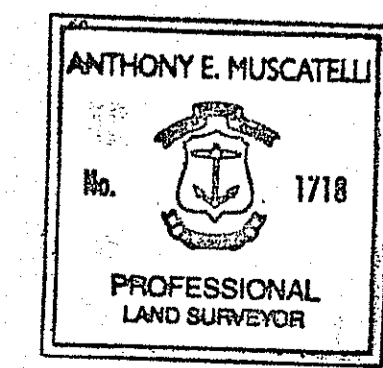
**LEGEND:**

- EXISTING RIVER W/FLAG
- EXISTING WETLAND EDGE W/FLAG
- EXISTING PLANTING
- CONSERVATION RESTRICTION
- PROPOSED PROPERTY LINE OF PREVIOUSLY SUBMITTED MAJOR SUBDIVISION
- EXISTING UTILITY POLE
- EXISTING HYDRANT



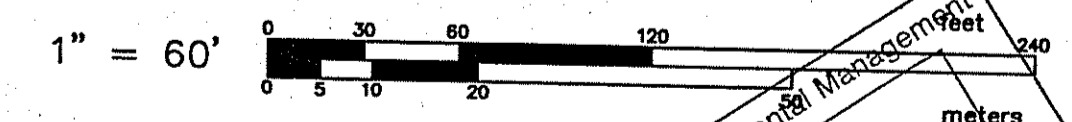
- NOTES:**
- SUBJECT PROPERTY FOUND TO BE WITHIN ZONE X, AREAS DETERMINED TO BE OUTSIDE 500-YEAR FLOODPLAIN, AS SHOWN ON FIRM FLOOD INSURANCE RATE MAP COMMUNITY PANEL NUMBER 440025 0001 B, MAP REVISED MARCH 4, 1991.
  - VERTICAL DATUM: MEAN SEA LEVEL (NAVD 1988).
  - WETLAND EDGE DELINEATED BY NATURAL RESOURCE SERVICES, INC. AND LOCATED BY INSTRUMENT SURVEY BY INTERNATIONAL MAPPING AND SURVEYING CORPORATION. FLAGS RB-8 THRU RB-23 FIELD LOCATED BY NATURAL RESOURCE SERVICES INC.

**CERTIFICATION:**  
THIS SURVEY AND PLAN CONFORM TO A CLASS III STANDARD AS ADOPTED BY THE RHODE ISLAND BOARD OF REGISTRATION FOR PROFESSIONAL LAND SURVEYORS.

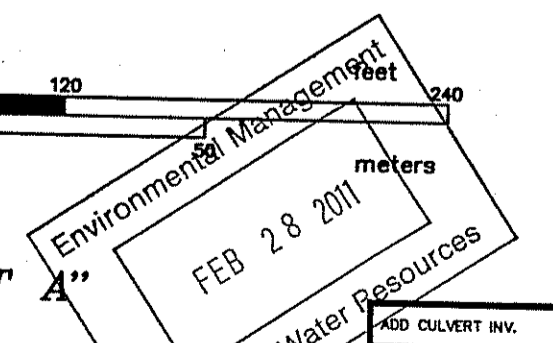


BY: \_\_\_\_\_  
REGISTERED PROFESSIONAL LAND SURVEYOR DATE

DEPARTMENT OF ENVIRONMENTAL MANAGEMENT  
OFFICE OF WATER RESOURCES  
FRESHWATER WETLANDS PROGRAM  
APPROVED WITH CONDITIONS  
AS SPECIFIED IN THE LETTER OF APPROVAL  
DATED MAR 30 2011 FILE # 08-0094  
NO CHANGES ALLOWED WITHOUT PRIOR APPROVAL  
APPROVED PLANS MUST BE AT CONSTRUCTION SITE.  
*Karen L. Freeman*



"EXHIBIT A"



**INTERNATIONAL MAPPING & SURVEYING CORP**  
LAND SURVEYING CIVIL ENGINEERING PHOTOGRAMMETRIC MAPPING  
19 INDUSTRIAL DRIVE, SMITHFIELD, R.I. 02917 (401) 232-2620

**CONSERVATION RESTRICTION & RESTORATION PLAN**  
for WILLIAM MACHALA  
on BAYBERRY ROAD  
in SMITHFIELD, RI  
A.P. 50 LOT 24

REVISIONS	DATE	NO.
DRAWN BY	P.A.K.	
CHKD. BY	K.R.R.	
APPRD. BY	P.A.K.	
DATE	8/15/05	
SCALE	1"=60'	
SHEET	1 OF 1	
DWG.NO.	010705-W4	