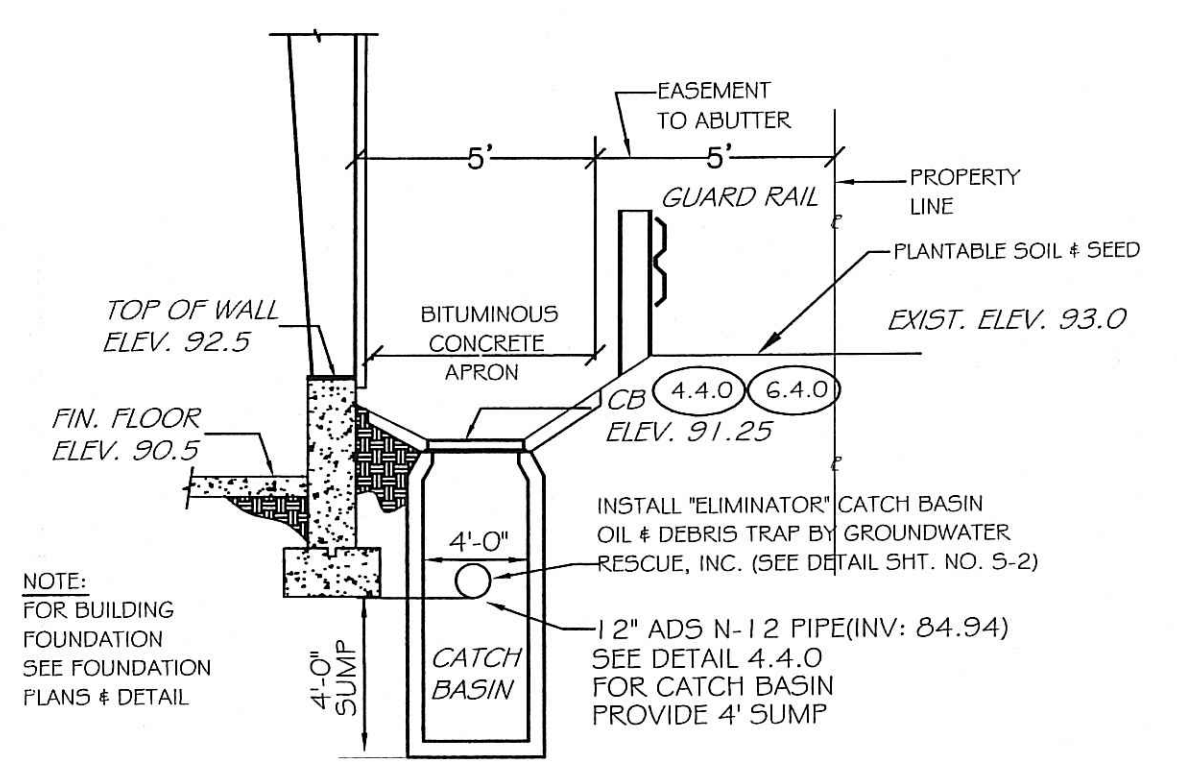
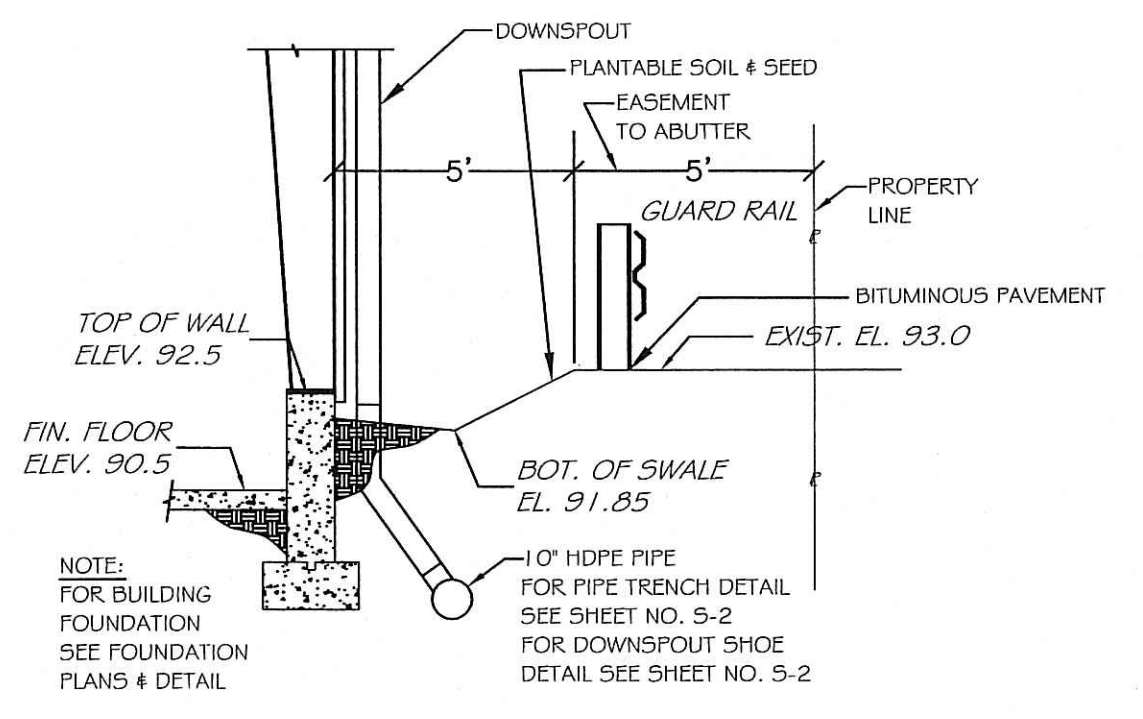


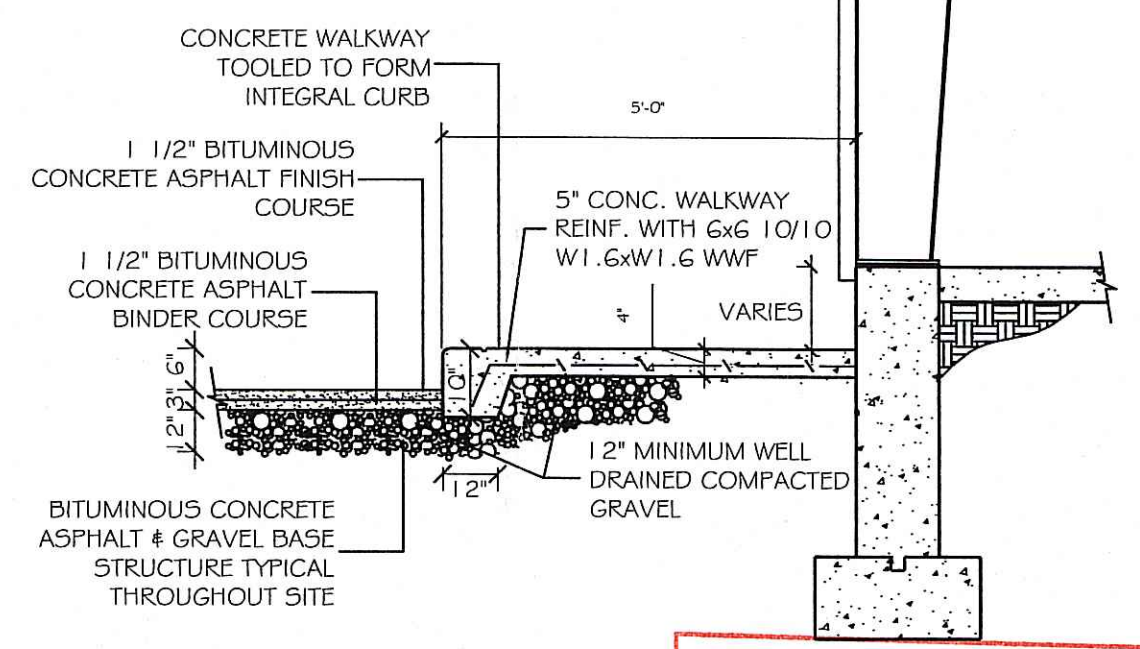
SECTION "A" - "A"
N.T.S.



SECTION "B" - "B"
N.T.S.

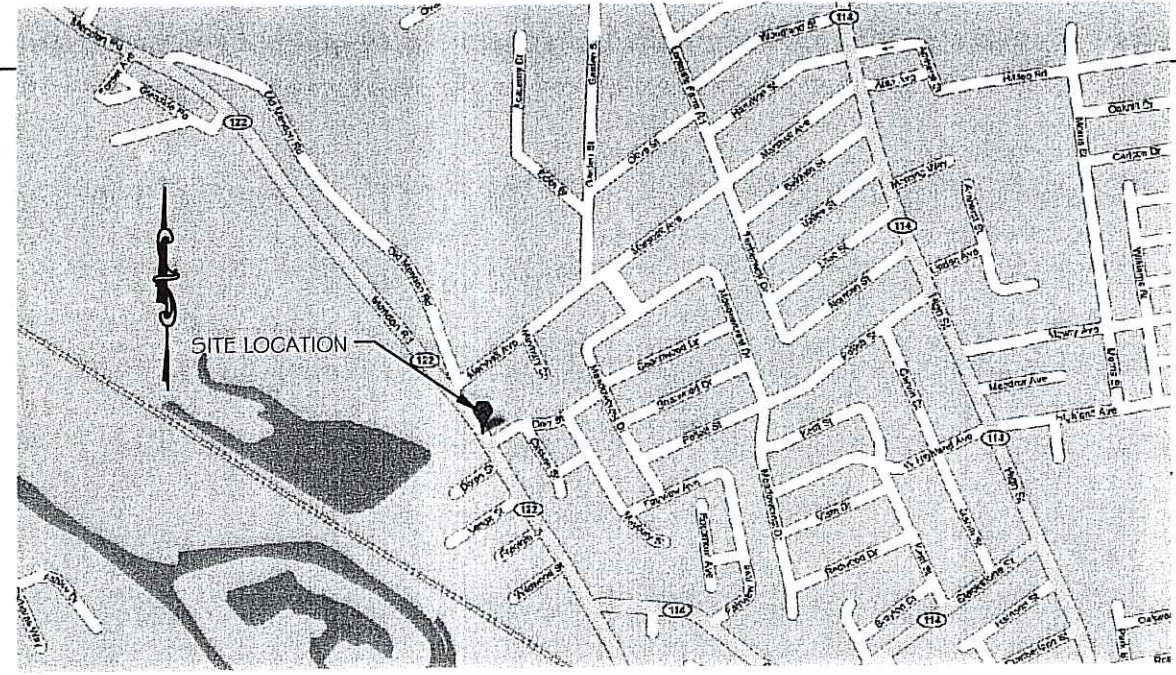


SECTION "C" - "C"
N.T.S.



SECTION "E" - "E"
N.T.S.

Kindly be advised that this Permit is not equivalent to a verification of the type or extent of freshwater wetlands on site.

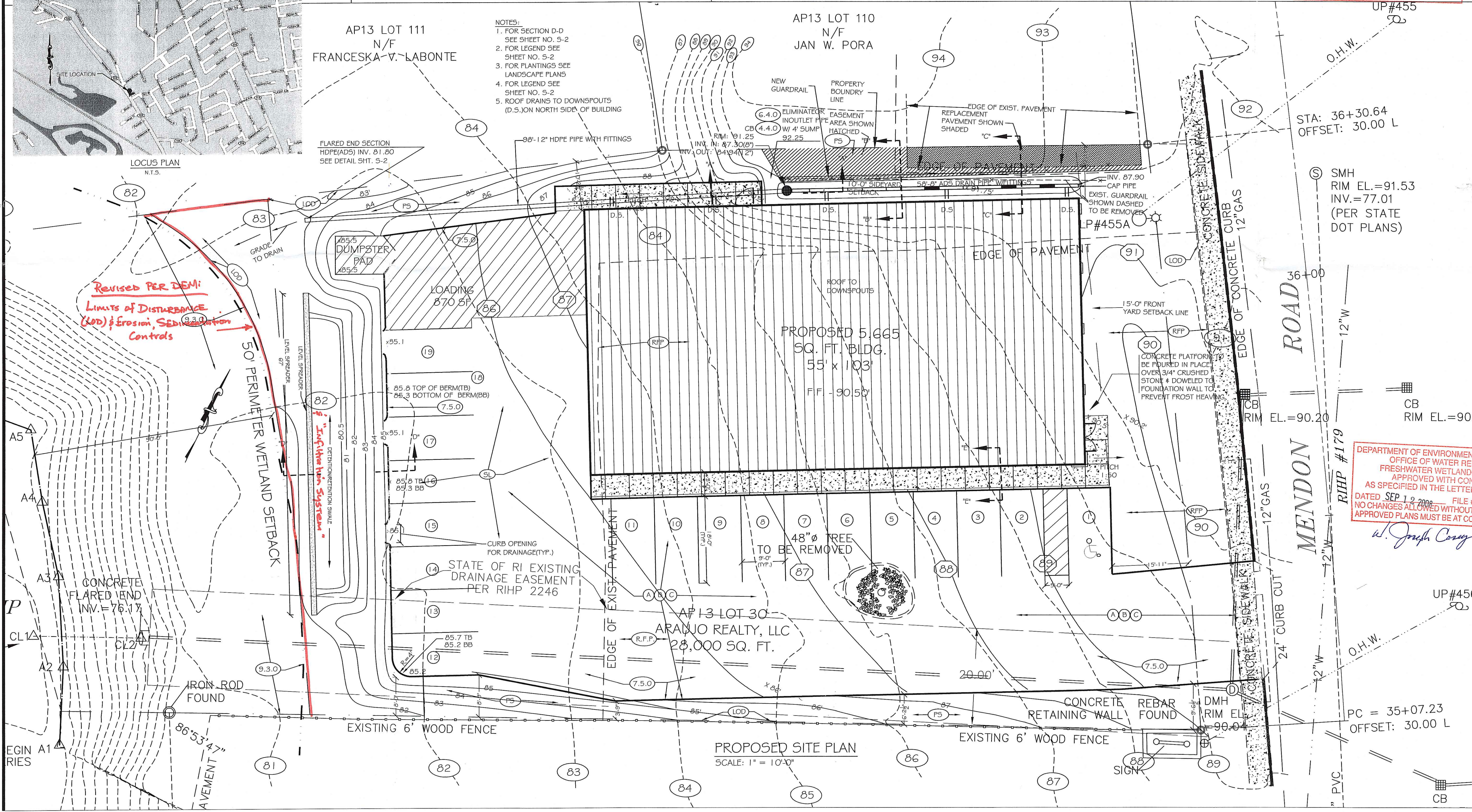


LOCUS PLAN
N.T.S.

AP13 LOT 111
N/F
FRANCESKA-V. LABONTE

AP13 LOT 110
N/F
JAN W. PORA

- NOTES:
1. FOR SECTION D-D SEE SHEET NO. 5-2
 2. FOR LEGEND SEE SHEET NO. 5-2
 3. FOR PLANTINGS SEE LANDSCAPE PLANS
 4. FOR LEGEND SEE SHEET NO. 5-2
 5. ROOF DRAINS TO DOWNSPOUTS (D.S.) ON NORTH SIDE OF BUILDING



PROPOSED SITE PLAN
SCALE: 1" = 10'-0"

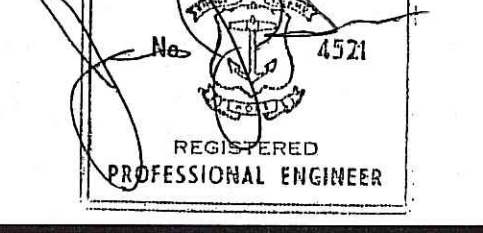
REVISIONS:
REVISION NO. 1 (6-25-08)
PER RIDEM COMMENTS
DATE JUNE 11, 2008

AUG 1 2008



JAMES J. GEREMIA & ASSOCIATES, INC.
CONSULTING, ENVIRONMENTAL, ENGINEERS & SCIENTISTS
272 W. Exchange Street, Suite 201 Providence, RI 02903-1025
Phone: 401-454-7000 Fax: 401-454-7415

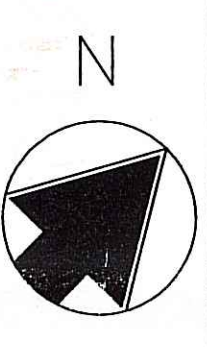
JAMES J. GEREMIA



R B H UGHES
CORP.
BUILDERS & ENGINEERS

63 Dexter Road
East Providence, Rhode Island 02914
Tel: (401) 434-0645
Fax: (401) 438-2465

© RBHC
COPYRIGHT IS CLAIMED ON THESE DRAWINGS
AND NO USE MAY BE MADE OF THEM WITHOUT
PRIOR WRITTEN PERMISSION.
COPYRIGHT 2007



TITLE
PROPOSED NEW STORE
FOR:

JA APPLIANCE Inc.

MENDON ROAD
CUMBERLAND, RHODE ISLAND

DEPARTMENT OF ENVIRONMENT
OFFICE OF WATER RESOURCES
FRESHWATER WETLANDS
PROGRAM
APPROVED WITH CONDITIONS
AS SPECIFIED IN THE LETTER OF APPROVAL
DATED SEP 19 2008 FILE # 08-0116
NO CHANGES ALLOWED WITHOUT PRIOR APPROVAL
APPROVED PLANS MUST BE AT CONSTRUCTION SITE.
W. Joseph Casey

DATE:
9 JANUARY, 2008

SCALE:
AS NOTED

DRAWN BY:
BJV

SHEET NO.

S-1

SHEET 1 OF 2

GENERAL NOTES:

- SITE PLAN FOR PROPOSED NEW STORE BUILDING FOR J. A. APPLIANCE, MENDON RD., CUMBERLAND, RI PROVIDED BY R. B. HUGHES CORP., 63 DEXTER RD., EAST PROVIDENCE, RI 02914 SHOWING PROPOSED BUILDING, PROPOSED SITE GRADING, 50' PERIMETER WETLAND SETBACK, AND EXISTING TOPO.
- STORM DRAINS AND INFILTRATION SYSTEM DESIGNED BY JAMES J. GEREMIA & ASSOCIATES, INC., 272 WEST EXCHANGE ST., SUITE 201, PROVIDENCE, RI 02903.
- NOTE 3 DELETED
- AT THE END OF THE PROJECT, THE CONTRACTOR SHALL FLUSH THE DRAINAGE SYSTEM AND REMOVE ALL SILTATION.
- THE CONTRACTOR SHALL BE RESPONSIBLE FOR ALL EROSION CONTROL MAINTENANCE AND SHALL INSPECT/REPLACE DAILY, AND AFTER EACH RAINFALL. REPAIRS SHALL BE MADE IMMEDIATELY, TO SLOPES, PAVEMENT, DRAINAGE STRUCTURES AND DETENTION/RETENTION SWALES.
- ALL SEDIMENT MUST BE REMOVED WHEN THE HEIGHT OF THE SEDIMENT REACHES THE HEIGHT OF THE SEDIMENT BARRIER (SILT FENCE).
- THE "R.I. EROSION AND SEDIMENT CONTROL HANDBOOK" PREPARED BY THE U.S. DEPARTMENT OF AGRICULTURE, SOIL CONSERVATION SERVICE (LATEST EDITION) MUST BE UTILIZED BY THE CONTRACTOR AS A GUIDE.
- ALL BACKFILL ADJACENT TO DRAINAGE STRUCTURES SHALL BE COMPACTED TO 95% IN ACCORDANCE WITH AASHTO T-160 METHOD A OR D.
- ALL PROPOSED DRAINAGE STRUCTURES SHALL BE OF PRECAST CONCRETE CONSTRUCTION, UNLESS OTHERWISE INDICATED ON THE PLANS OR AUTHORIZED BY THE ENGINEER.
- ALL POLYETHYLENE PIPE SHALL BE SMOOTH INTERIOR CORRUGATED PIPE AND INSTALLED ACCORDING TO ASTM D2321.
- ALL WORK WITHIN THE STATE HIGHWAY RIGHT-OF-WAY SHALL CONFORM TO RIDOT "STANDARD SPECIFICATIONS FOR ROAD AND BRIDGE CONSTRUCTION (2004 EDITION)", INCLUDING ALL REVISIONS AND THE RI STANDARD DETAILS.
- ALL TRAFFIC CONTROL SHALL CONFORM TO THE "MANUAL FOR UNIFORM TRAFFIC CONTROL DEVICES (2003)", INCLUDING ALL REVISIONS.

FRESHWATER WETLAND NOTES:

- ALL EXCESS SOIL, STUMPS, TREES, ROCKS, BOULDERS AND OTHER REFUSE SHALL BE DISCARDED OFF-SITE IN AN APPROPRIATE UPLAND LOCATION, OUTSIDE OF ALL REGULATED FRESHWATER WETLAND AREAS, UNLESS OTHERWISE SPECIFIED BY THE ENGINEER.
- THE HAY BALE/SILT FENCE LINE ILLUSTRATED ON THESE PLANS SHALL SERVE AS THE STRICT LIMITS OF DISTURBANCE FOR THE PROJECT, WITHIN OR ADJACENT TO REGULATED FRESHWATER WETLAND AREAS. NO ALTERATIONS, INCLUDING VEGETATIVE CLEARING OR SURFACE DISTURBANCE, SHALL OCCUR BEYOND THIS HAY BALE/SILT FENCE LINE.
- ALL DISTURBED AREAS WITHIN REGULATED FRESHWATER WETLAND LIMITS SHALL BE PERMANENTLY STABILIZED WITH PLANTABLE SOIL AND A SUITABLE CONSERVATION TYPE SEED MIX (RIDOT SEED MIX TYPE 1) PRIOR TO THE COMPLETION OF THE PROJECT. ALL GRASSED SHOULDERS AND SLOPES WITHIN REGULATED WETLAND LIMITS SHALL BE ALLOWED TO REGROW IN A NATURAL CONDITION.
- ALL SOIL EROSION AND SEDIMENT CONTROLS SHALL BE INSTALLED PRIOR TO THE START OF PROJECT CONSTRUCTION.

CATCH BASIN & INFILTRATION SYSTEM MAINTENANCE PROGRAM

All on-site catch basins and infiltration systems shall be inspected every six (6) months by the maintenance personnel (personnel) with experience in the inspection and maintenance of such structures. The inspections shall be scheduled for mid-April and mid-October of each year. The owner shall direct such personnel to regularly inspect and maintain all facilities at the time interval specified above, in accordance with this document. The owner shall comply with OSHA safety regulations at all times. The owner shall make a record of all inspection and maintenance measurements and tasks, and keep a record copy.

The pavement shall be swept each Spring after parking area sanding is completed for the season.

CATCH BASIN AND INFILTRATION SYSTEM INSPECTION

The following tasks shall comprise the inspection:

- The depth of accumulated sediment at the bottom of each catch basin and infiltration system shall be measured. The depth of accumulated sediment shall be referenced to the total depth of the catch basin as indicated on the site plan.
- Not the presence of any accumulated trash, debris, and/or deleterious material other than sediments.
- All catch basin inlet grates shall be inspected for proper functioning. Note any malfunctioning of the inlet grate such as the reduced ability to collect stormwater adjacent to the catch basin. Also note any deterioration of the bituminous concrete apron surrounding the catch basins.
- Grates shall be inspected for integrity and proper functioning for the catch basins.

CATCH BASIN MAINTENANCE

Following the inspection of catch basins, the personnel shall provide maintenance services of those structures as follows:
Sediment Removal: Accumulated sediments shall be removed from the catch basin when the depth of such sediments reach 6-inches in depth. The depth of accumulated sediments shall be measured from the bottom of the catch basin as shown on the site plan. All sediments removed from the catch basins shall be disposed of legally. In addition to removing accumulated sediments, all other trash and debris shall be removed from all catch basins.

Inlet Grate Maintenance: If the inspection of the inlet grate indicates that it is not properly functioning, the grate and surrounding bituminous paved area shall be repaired such that the inlet grate provides for the intended collection of stormwater.

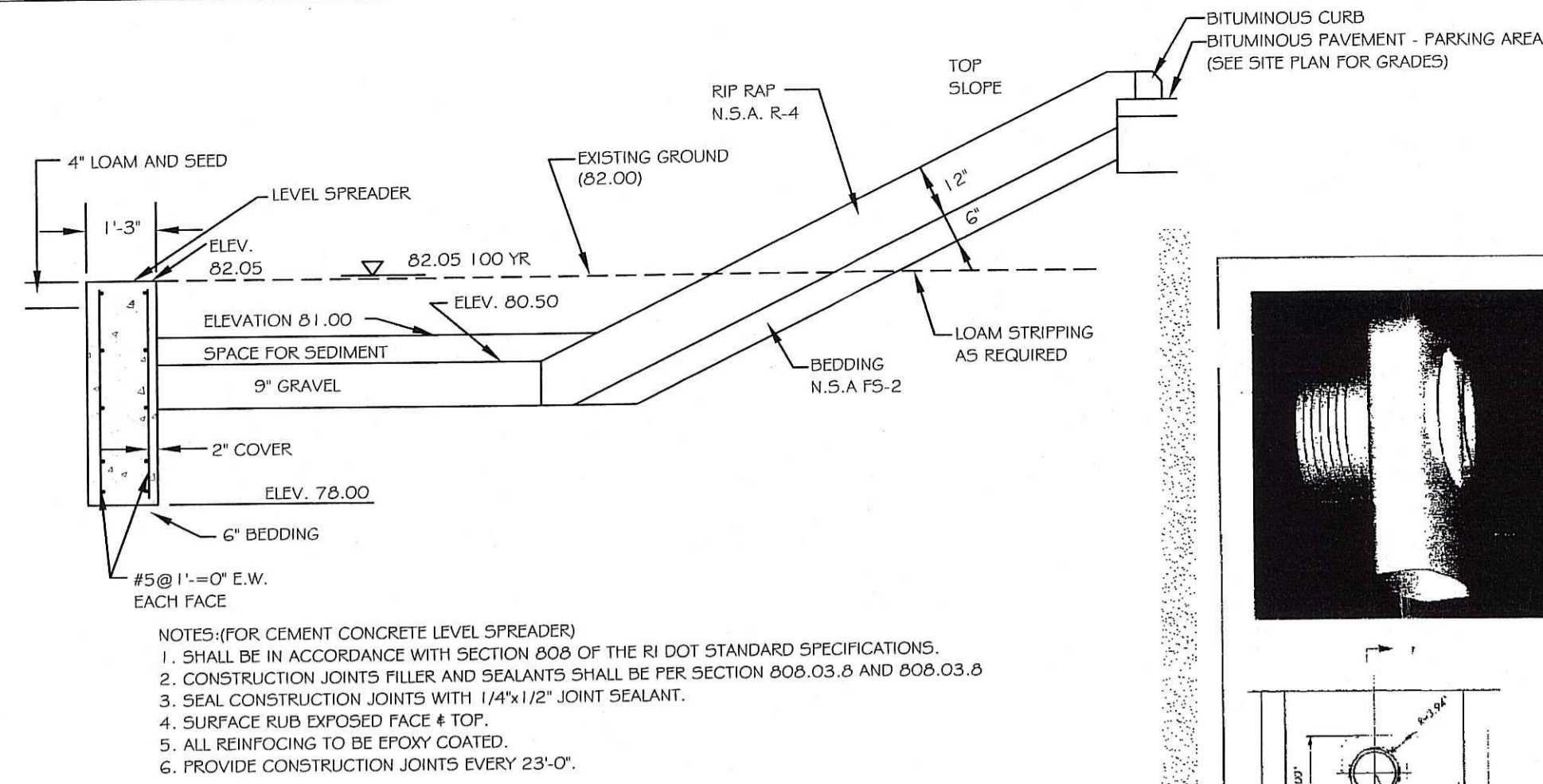
Other Catch Basin Maintenance: The presence of any other materials within the catch basin, either liquid or solid (other than clear water), shall be removed and disposed of legally at each maintenance interval.

INFILTRATION SYSTEM MAINTENANCE

Following the inspection of the infiltration system, the personnel shall provide maintenance services of this structure as follows:

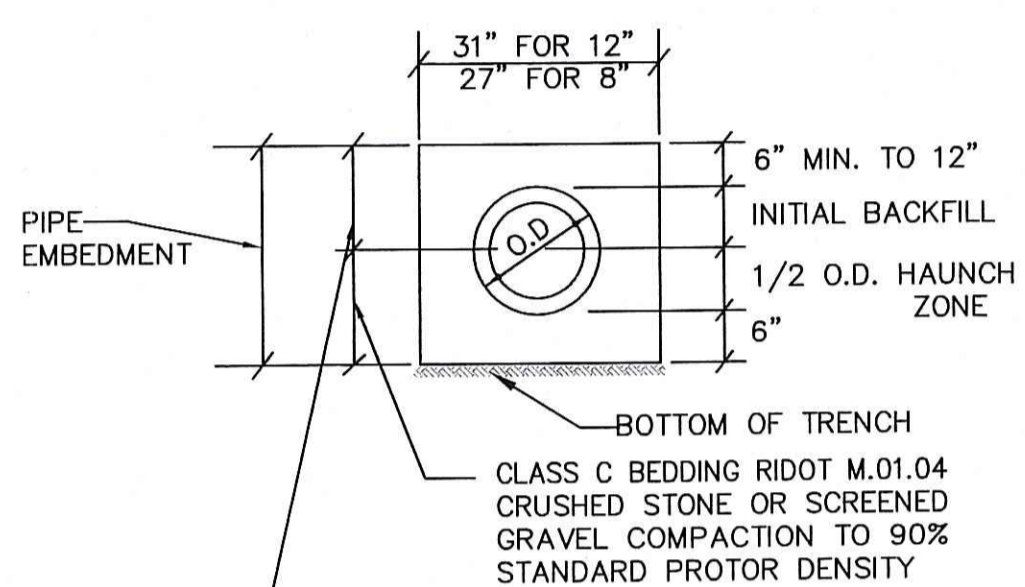
Sediment Removal: All sediment is to be removed from the infiltration area. All sediments removed from the infiltration system shall be disposed of legally. In addition to removing accumulated sediments, all other trash and debris shall be removed from the system.

Scarfing or Tilling: Scarfing or tilling of retention/detention swale will be required if water remains longer than 72 hours.



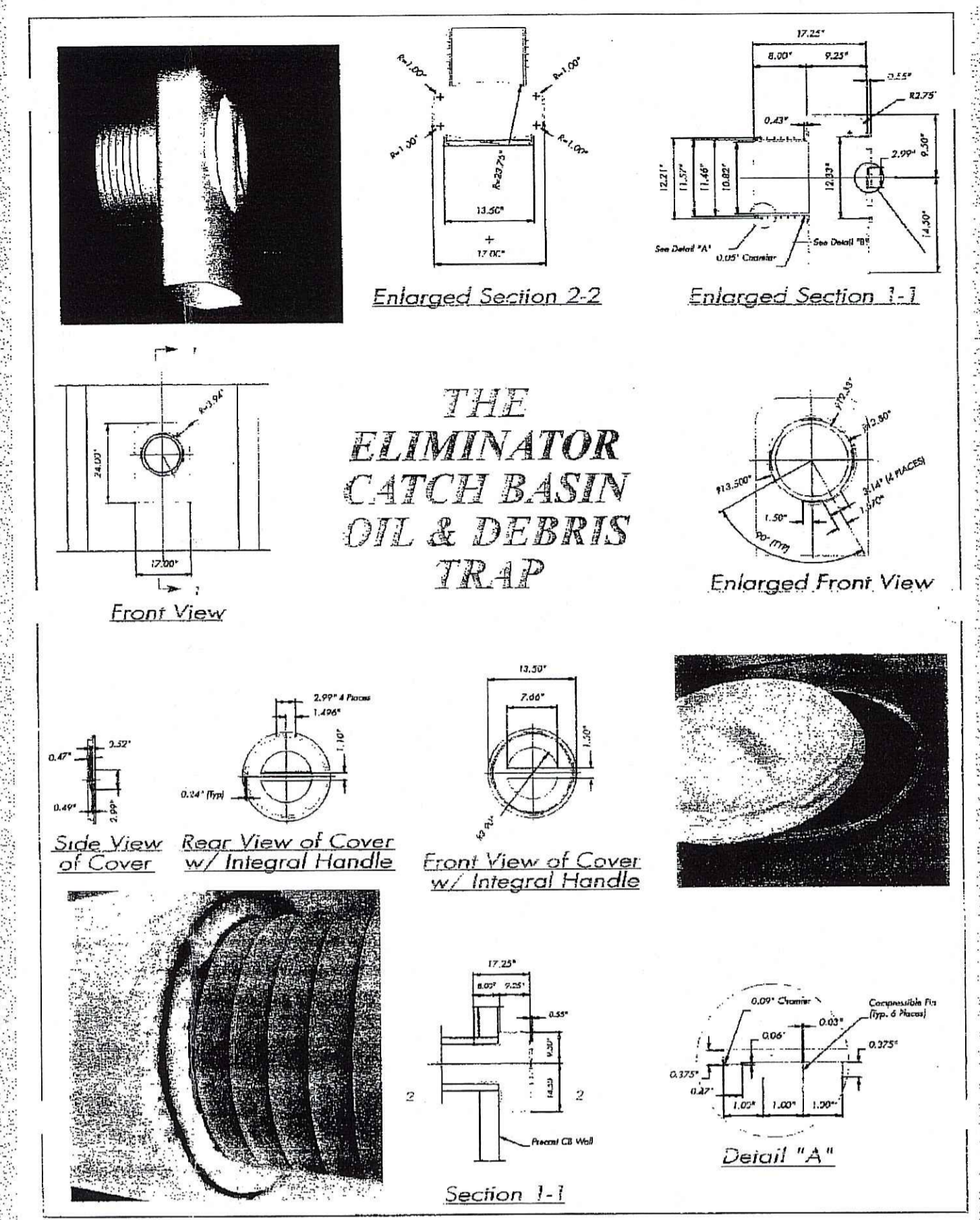
- NOTES (FOR CEMENT CONCRETE LEVEL SPREADER)
- SHALL BE IN ACCORDANCE WITH SECTION 606 OF THE RI DOT STANDARD SPECIFICATIONS.
 - CONSTRUCTION JOINTS FILLER AND SEALANTS SHALL BE PER SECTION 906.03.6 AND 906.03.8
 - SEAL CONSTRUCTION JOINTS WITH 1/4"x1/2" JOINT SEALANT.
 - SURFACE RUB EXPOSED FACE & TOP.
 - ALL REINFORCING TO BE EPOXY COATED.
 - PROVIDE CONSTRUCTION JOINTS EVERY 23'-0".

SECTION OF DETENTION/RETENTION SWALE SHOWING LEVEL SPREADER SECTION "D" - "D" N.T.S.

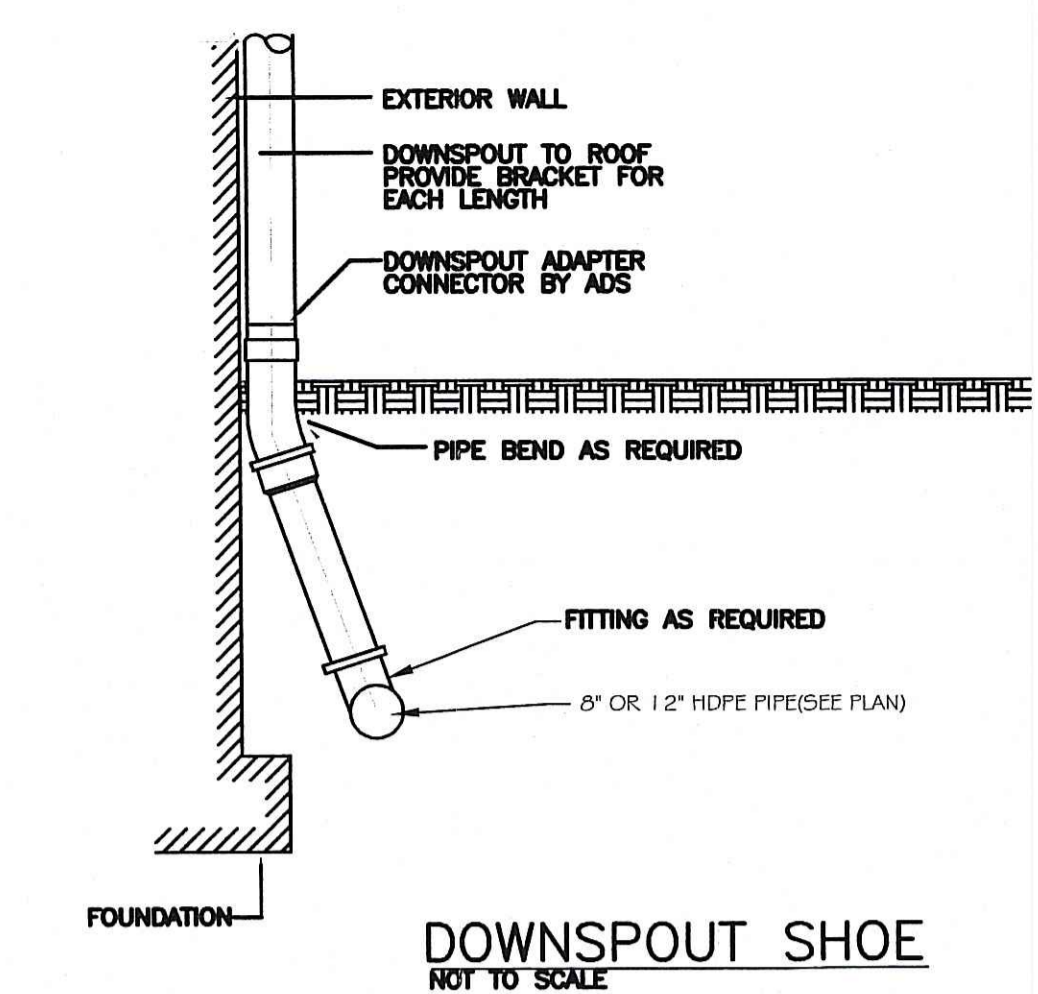


NOTE: INSTALLATION ACCORDING TO SPECIFICATION FOR HDPE PIPE ASTM D231

TRENCH DETAIL FOR HDPE PIPE N.T.S.



MANUFACTURED BY GROUNDWATER RESCUE, INC. 24 RYDEN STREET QUINCY, MA



NOTE: PIPE SIZE TO MATCH DOWN SPOUT SIZE

LEGEND

- (A) 1-1/2" BITUMINOUS CONCRETE CLASS 1 SURFACE COURSE
- (B) 1-1/2" BITUMINOUS CLASS 1 BINDER COURSE
- (C) 12" COMPACTED GRAVEL BASE COURSE
- (RFP) REMOVE & DISPOSE FLEXIBLE PAVEMENT
- (SL) LOAM REMOVED AND STOCK FILED
- (PS) 4" PLANTABLE SOIL & SEED
- (LOD) LIMITS OF DISTURBANCE
- (4.4.0) PRECAST 4'-0" ROUND CATCH BASIN
- (6.4.0) ROUND FRAME & GRATE
- (7.5.0) BITUMINOUS CONCRETE LIP CURB
- (9.3.0) BALED HAY EROSION CHECK & SILT FENCE COMBINED
- (LOD) LIMIT OF DISTURBANCE

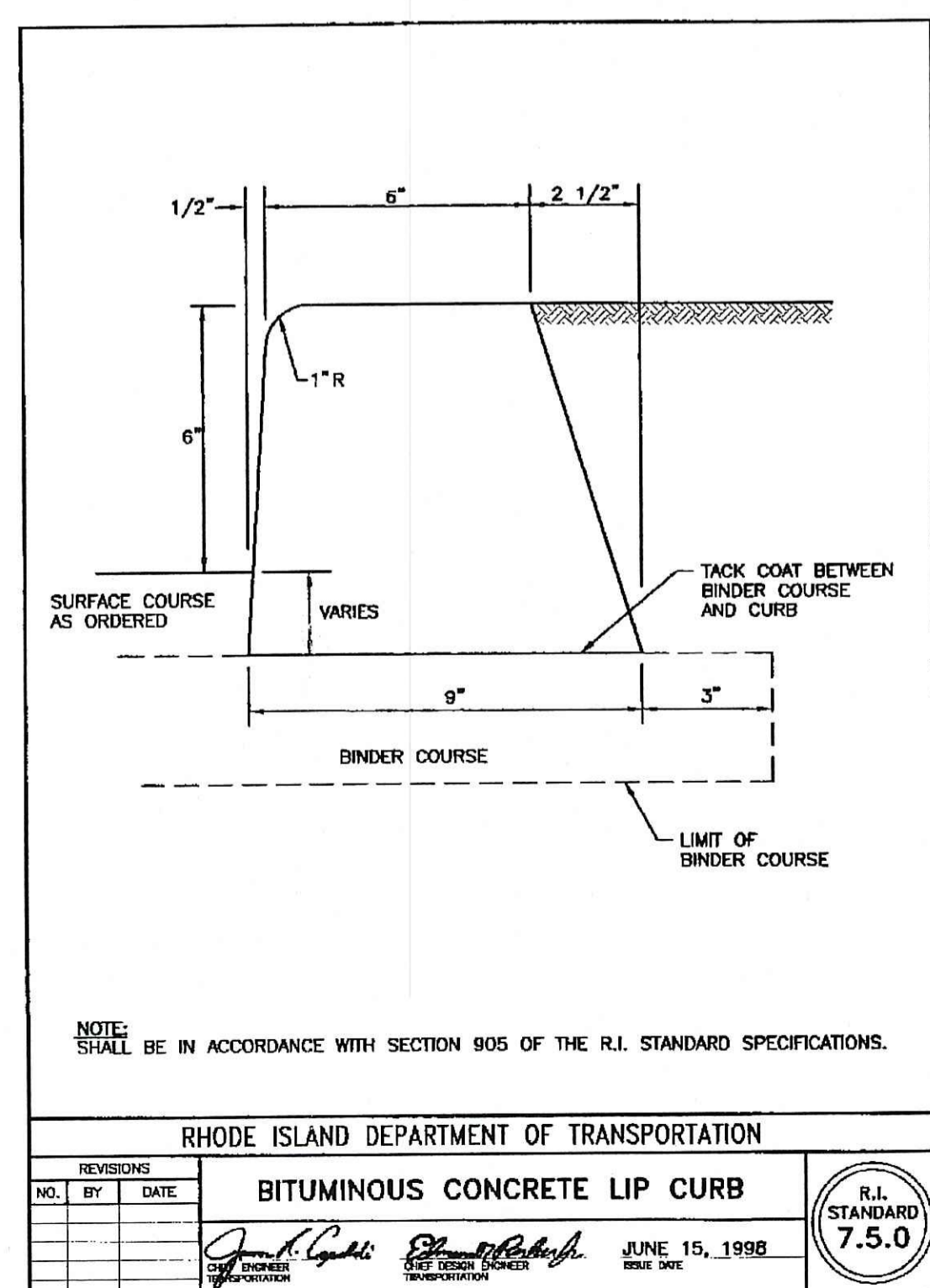
Kindly be advised that this Permit is not equivalent to a verification of the type or extent of freshwater wetlands on site.

DEPARTMENT OF ENVIRONMENTAL MANAGEMENT
 OFFICE OF WATER RESOURCES
 FRESHWATER WETLANDS PROGRAM
 APPROVED WITH CONDITIONS
 AS SPECIFIED IN THE LETTER OF APPROVAL
 DATED SEP 12 2008 FILE # 08-0116
 NO CHANGES ALLOWED WITHOUT PRIOR APPROVAL
 APPROVED PLANS MUST BE AT CONSTRUCTION SITE

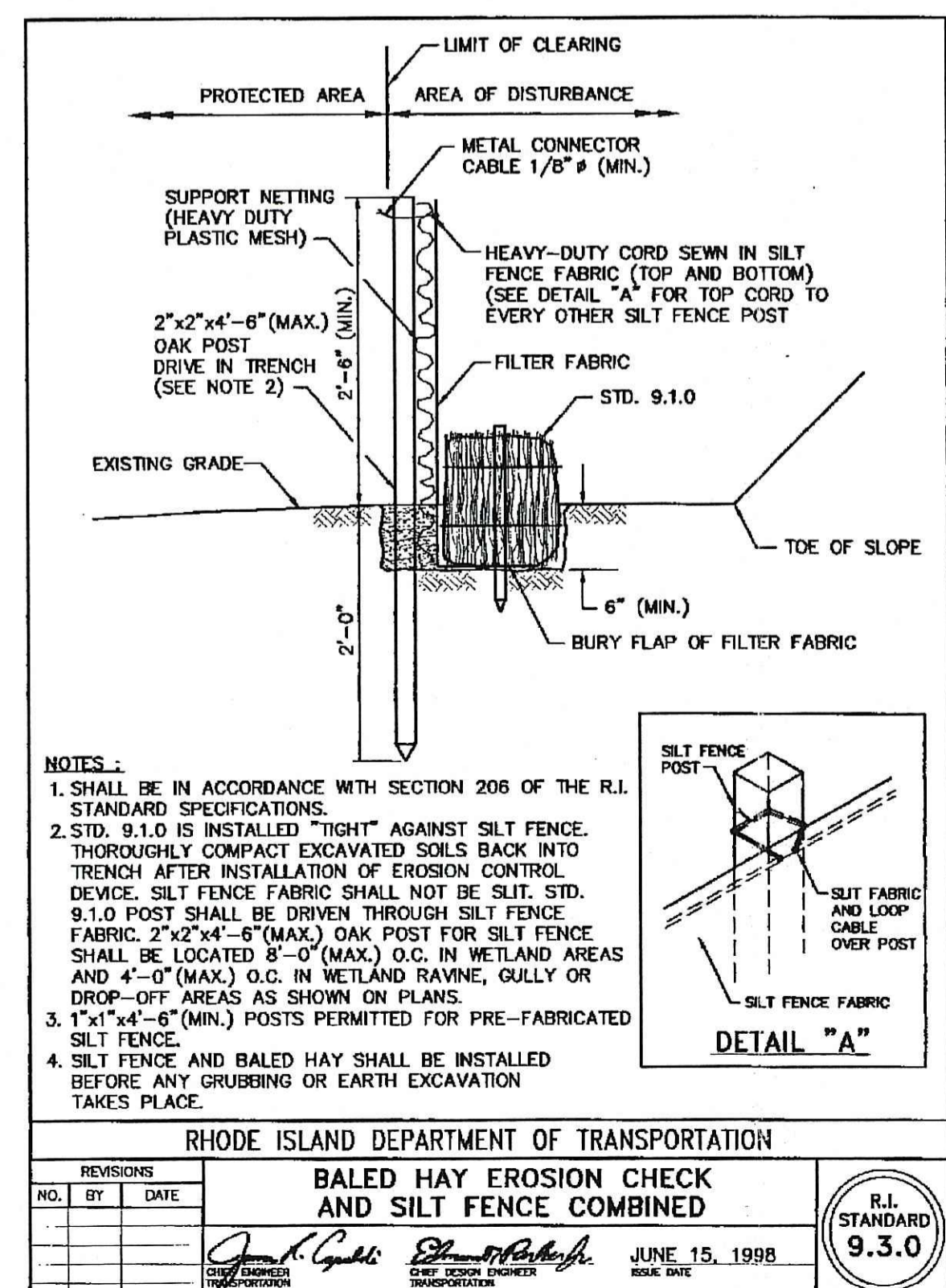
ADS ADAPTERS & END SECTION DETAILS

Part #	Tube Size	Downspout
0364AA	3"	3.25 x 2.5
0464AA	4"	3.25 x 2.5
0465AA	4"	4.25 x 3
0466AA	4"	2.56 x 2.56 Raingo
0664AA	6"	4 x 6

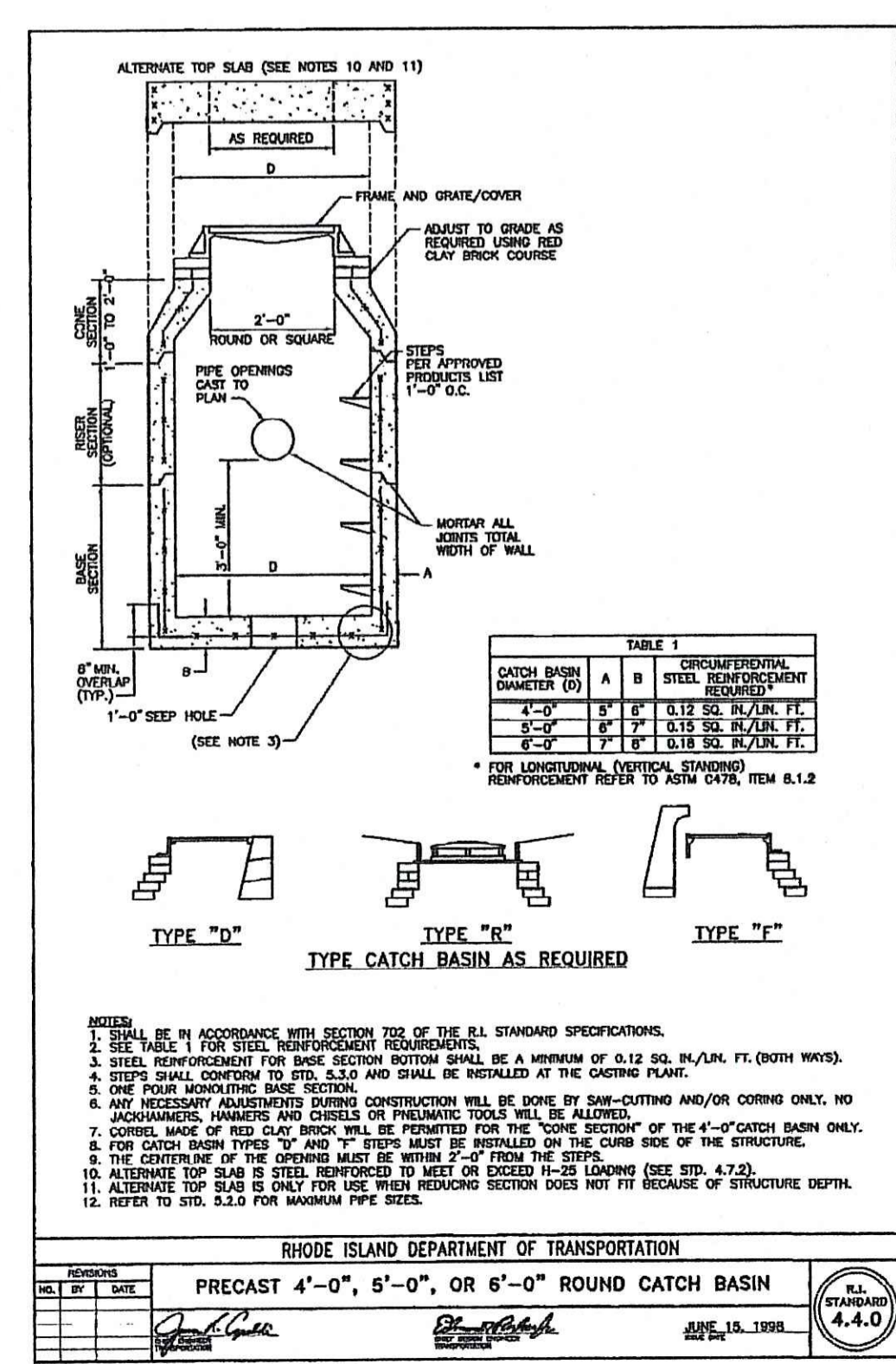
NOTE: ADAPTER SIZE TO MATCH DOWNSPOUT & PIPE SIZE



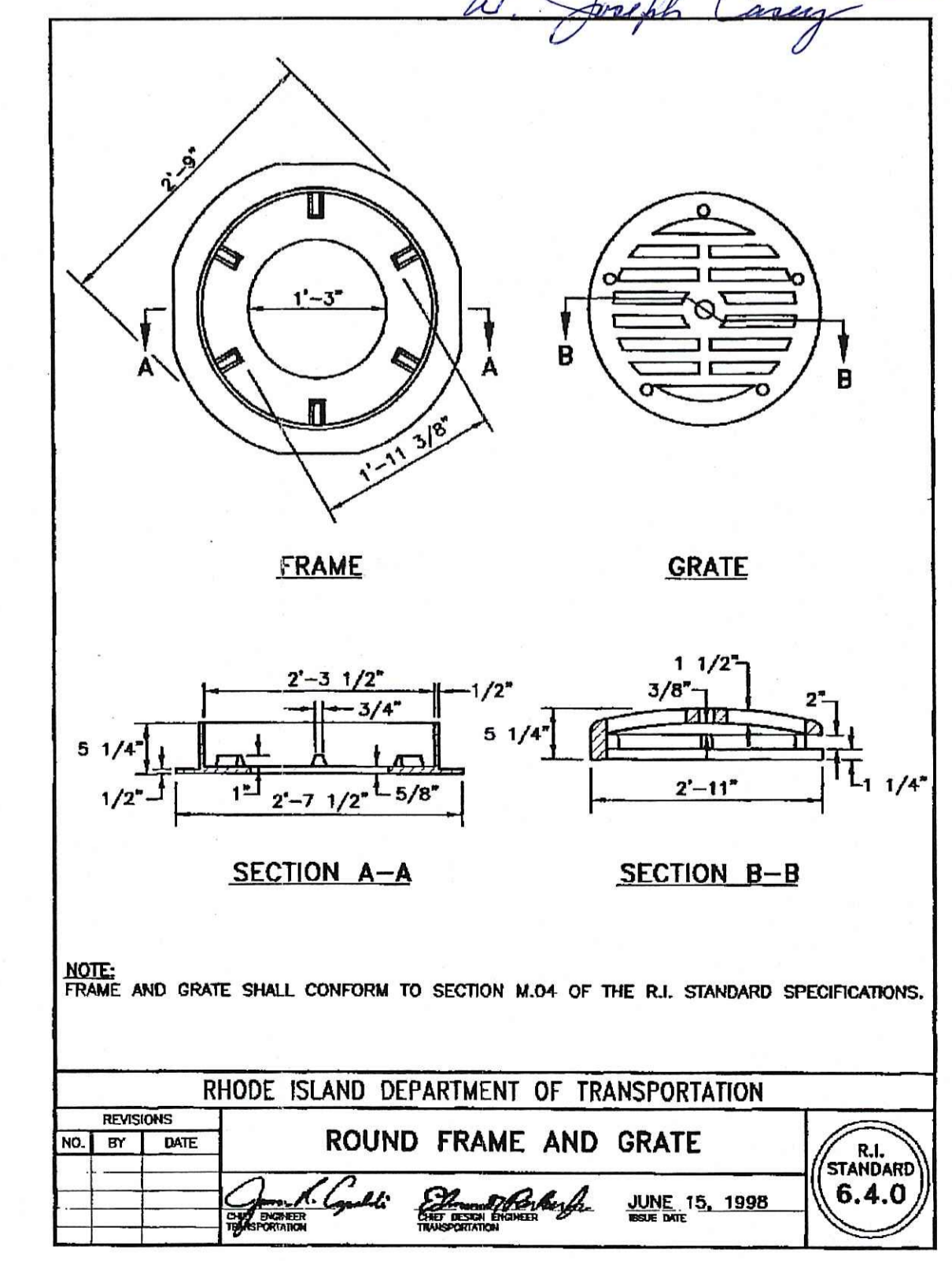
REVISIONS			R.I. STANDARD
NO.	BY	DATE	
			7.5.0



REVISIONS			R.I. STANDARD
NO.	BY	DATE	
			9.3.0



REVISIONS			R.I. STANDARD
NO.	BY	DATE	
			6.4.0



REVISIONS			R.I. STANDARD
NO.	BY	DATE	
			6.4.0

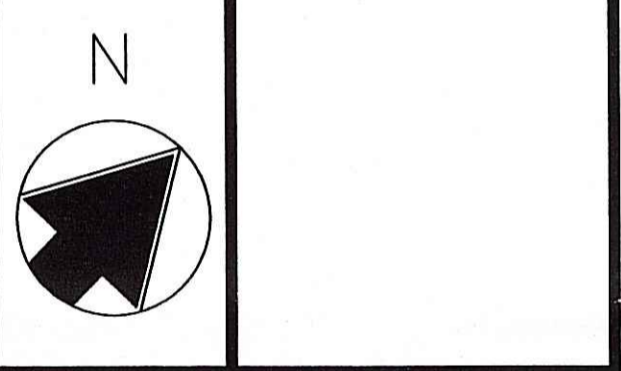
REVISIONS:
 REVISION NO. 1 (6-25-08)
 PER RIDEM COMMENTS
 DATE JUNE 11, 2008

JAMES J. GEREMIA & ASSOCIATES, INC.
 CONSULTING ENVIRONMENTAL ENGINEERS & ARCHITECTS
 272 W. Exchange Street Suite 201 Providence, RI 02903-1025
 Phone: 401-854-7000 Fax: 401-854-7415

JAMES J. GEREMIA
 No. 4321
 REGISTERED PROFESSIONAL ENGINEER

RBI HUGHES CORP.
 BUILDERS & ENGINEERS
 63 Dexter Road
 East Providence, Rhode Island 02914
 Tel: (401) 434-0616 Fax: (401) 438-2460

© RBHC
 COPYRIGHT IS CLAIMED ON THESE DRAWINGS AND NO USE MAY BE MADE OF THEM WITHOUT PRIOR WRITTEN PERMISSION. COPYRIGHT 2007



TITLE
 PROPOSED NEW STORE FOR:
JA APPLIANCE Inc.
 MENDON ROAD
 CUMBERLAND, RHODE ISLAND

SITE DETAILS

DATE:
 9 JANUARY, 2008
 SCALE: AS NOTED
 DRAWN BY: BJV

SHEET NO.
S-2
 SHEET 2 OF 2