

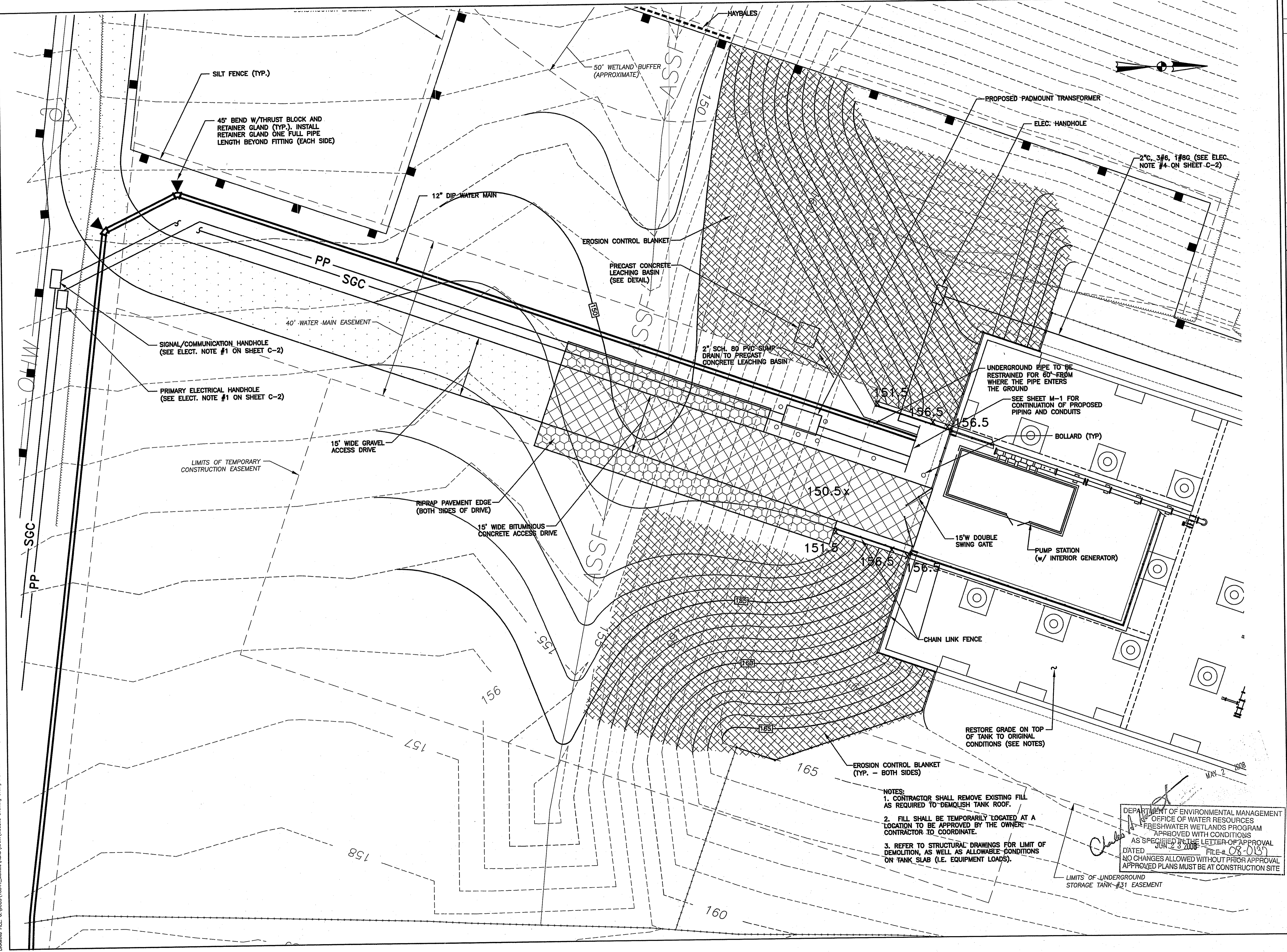








DRAWING FILE: G:\JOBS\18344\_Melville\WATER\Wetland\Drawing 5.dwg PLOTTED: Feb 20, 2008 - 12:50pm BY: Mlscad  
 REVIEWED BY: CIVIL INSTALLATION ARCH. INSTALLATION STRUC. INSTALLATION PLUMB. INSTALLATION FIRE INSTALLATION MECH. INSTALLATION ELEC. INSTALLATION

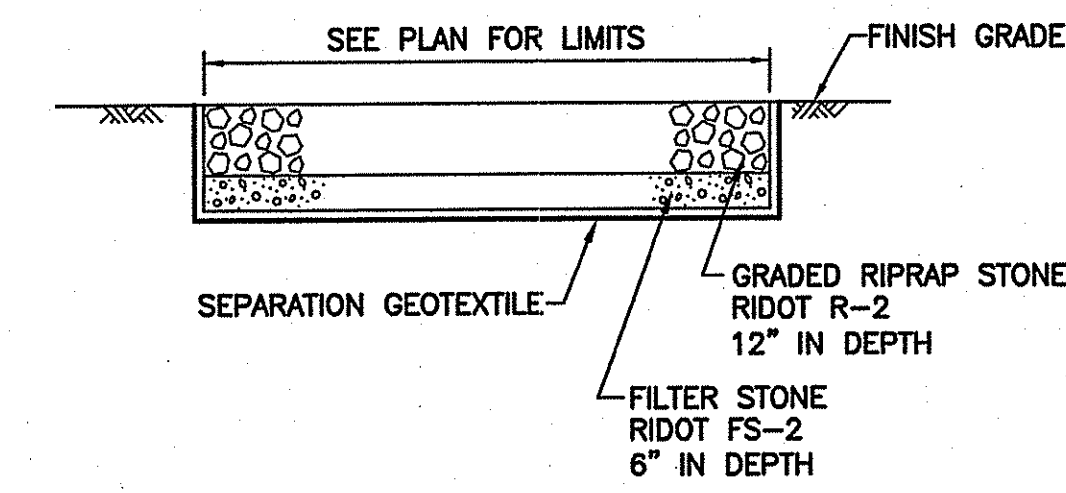


- NOTES:
1. CONTRACTOR SHALL REMOVE EXISTING FILL AS REQUIRED TO DEMOLISH TANK ROOF.
  2. FILL SHALL BE TEMPORARILY LOCATED AT A LOCATION TO BE APPROVED BY THE OWNER; CONTRACTOR TO COORDINATE.
  3. REFER TO STRUCTURAL DRAWINGS FOR LIMIT OF DEMOLITION, AS WELL AS ALLOWABLE CONDITIONS ON TANK SLAB (I.E. EQUIPMENT LOADS).

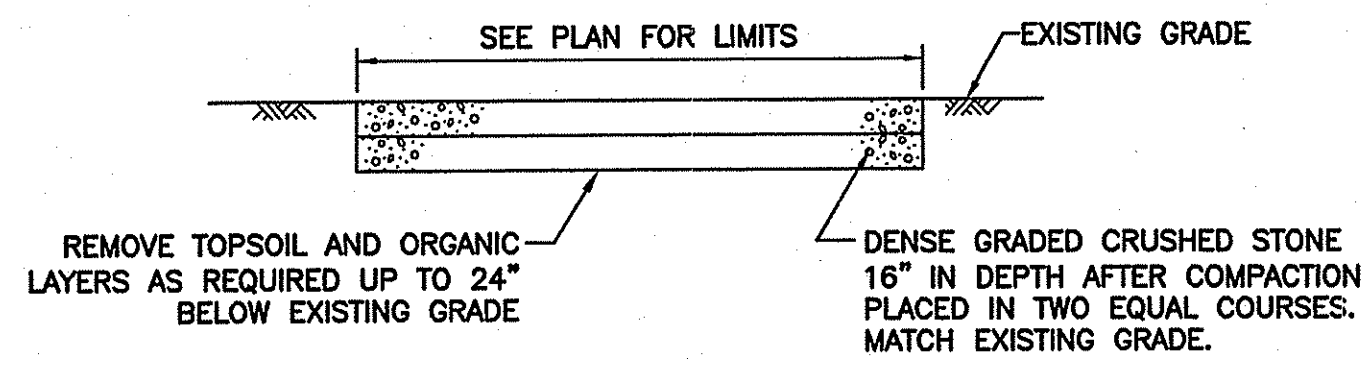
DEPARTMENT OF ENVIRONMENTAL MANAGEMENT  
 OFFICE OF WATER RESOURCES  
 FRESHWATER WETLANDS PROGRAM  
 APPROVED WITH CONDITIONS  
 AS SPECIFIED IN THE LETTER OF APPROVAL  
 DATED 02/20/08 FILE # 08-0137  
 NO CHANGES ALLOWED WITHOUT PRIOR APPROVAL  
 APPROVED PLANS MUST BE AT CONSTRUCTION SITE

|   |          |
|---|----------|
|   |          |
| <b>Maguire Group Inc.</b><br>Architects / Engineers / Planners<br>225 Chapman Street, 4th Floor<br>Providence, Rhode Island 02905   |          |
| <b>NAVAC MID-ATLANTIC PWD</b><br><b>NEWPORT, RHODE ISLAND</b><br><b>Melville Water System Project</b><br><b>PROPOSED GRADING AND</b><br><b>RESERVOIR NO. 31 SITE PLAN</b> |          |
| PROJECT NO.:  | 18344    |
| DESIGNED BY:  | ---      |
| DRAWN BY:   | ---      |
| CHK'D BY:   | ---      |
| DATE:   | 02-20-08 |
| SCALE:  | 1" = 10' |
| SHEET NO.:  | 5        |
| SHEET   | 5 OF 9   |

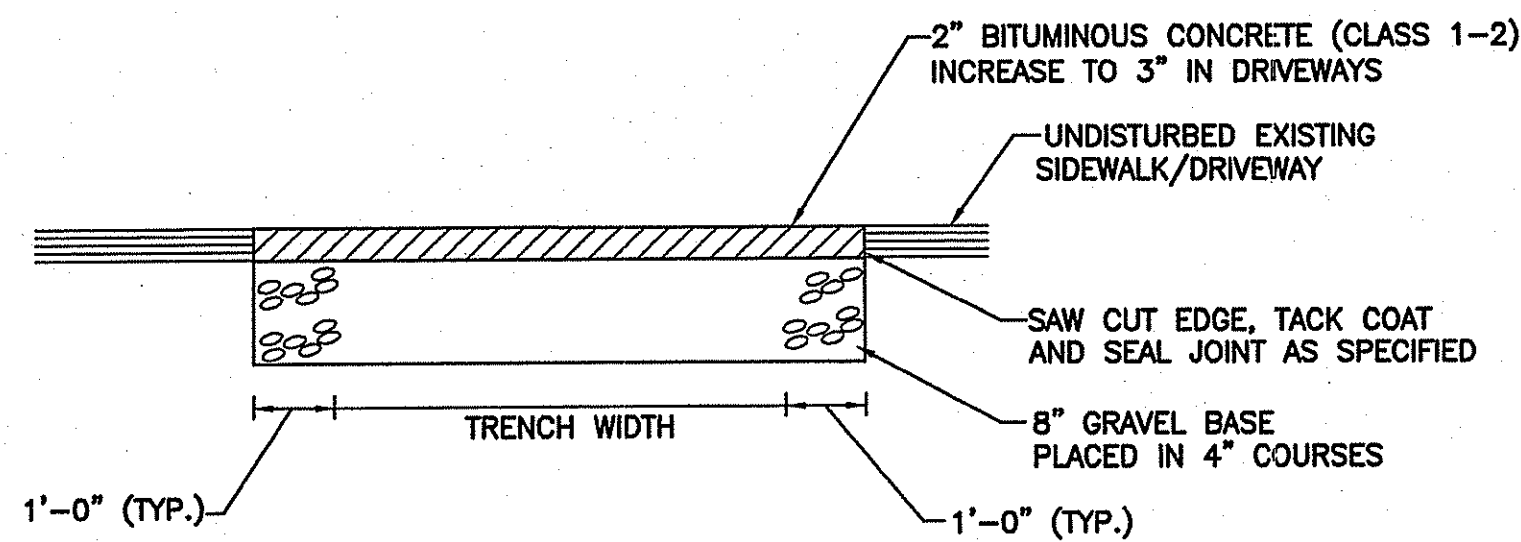
DRAWING FILE: C:\V053\18344\_Melville\ACAD\WATER\Wetland Drawing 6.dwg PLOTTED: Fri 20/06/2008 12:51 pm BY: Mllocci



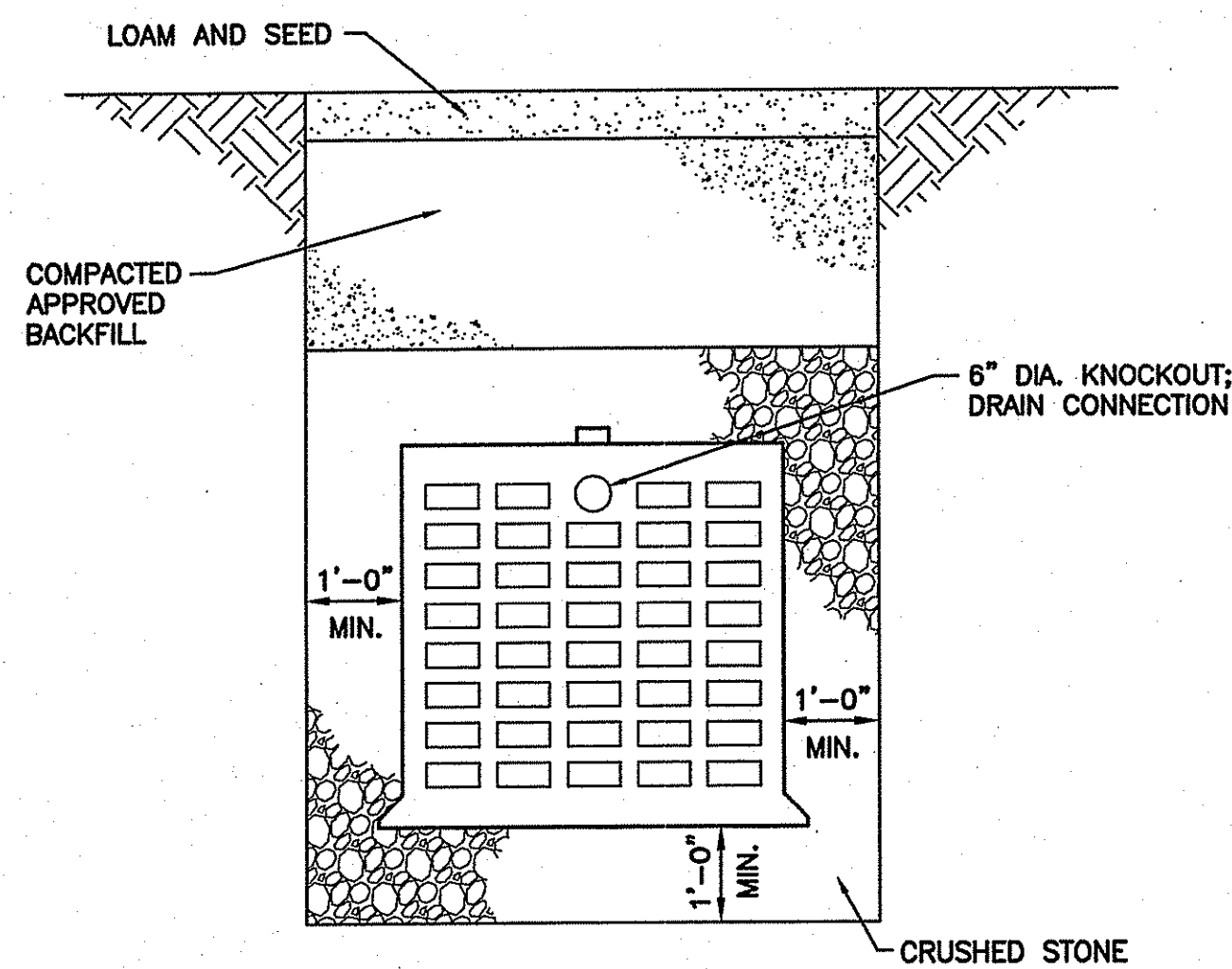
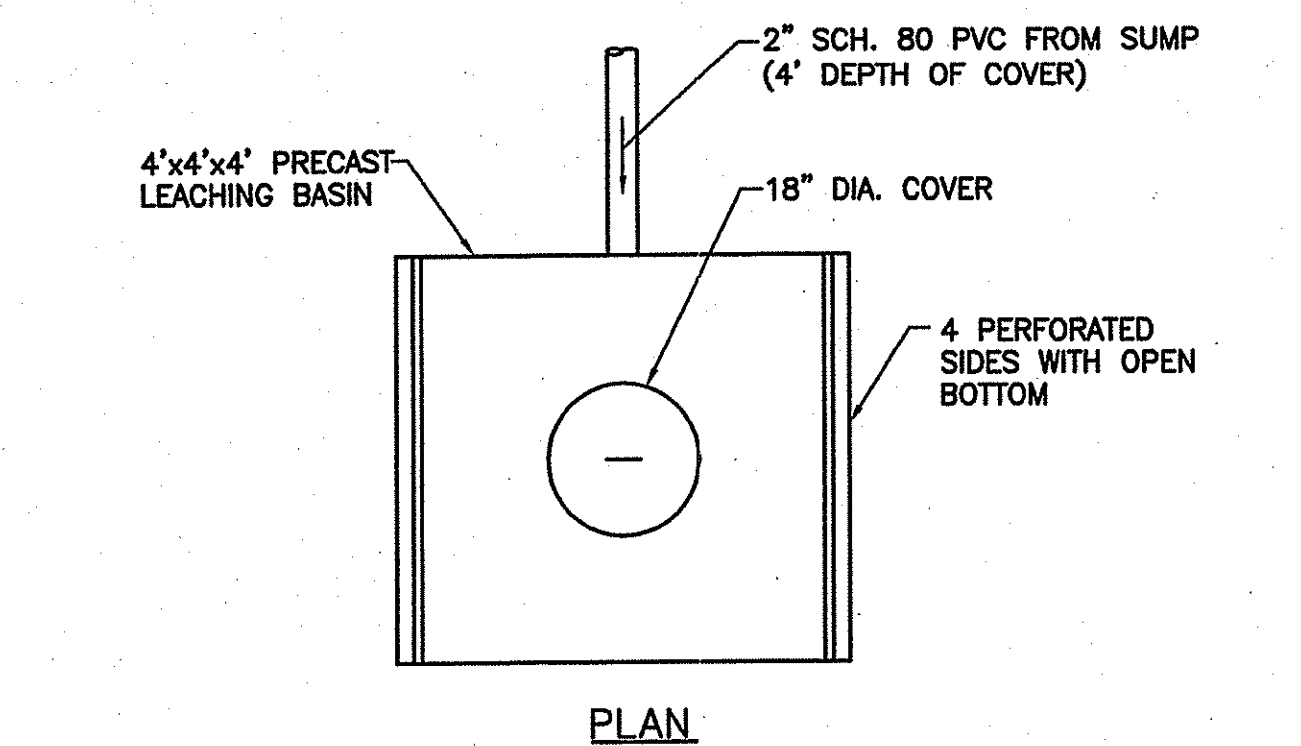
**RIPRAP AT PAVEMENT EDGE DETAIL**  
N.T.S.



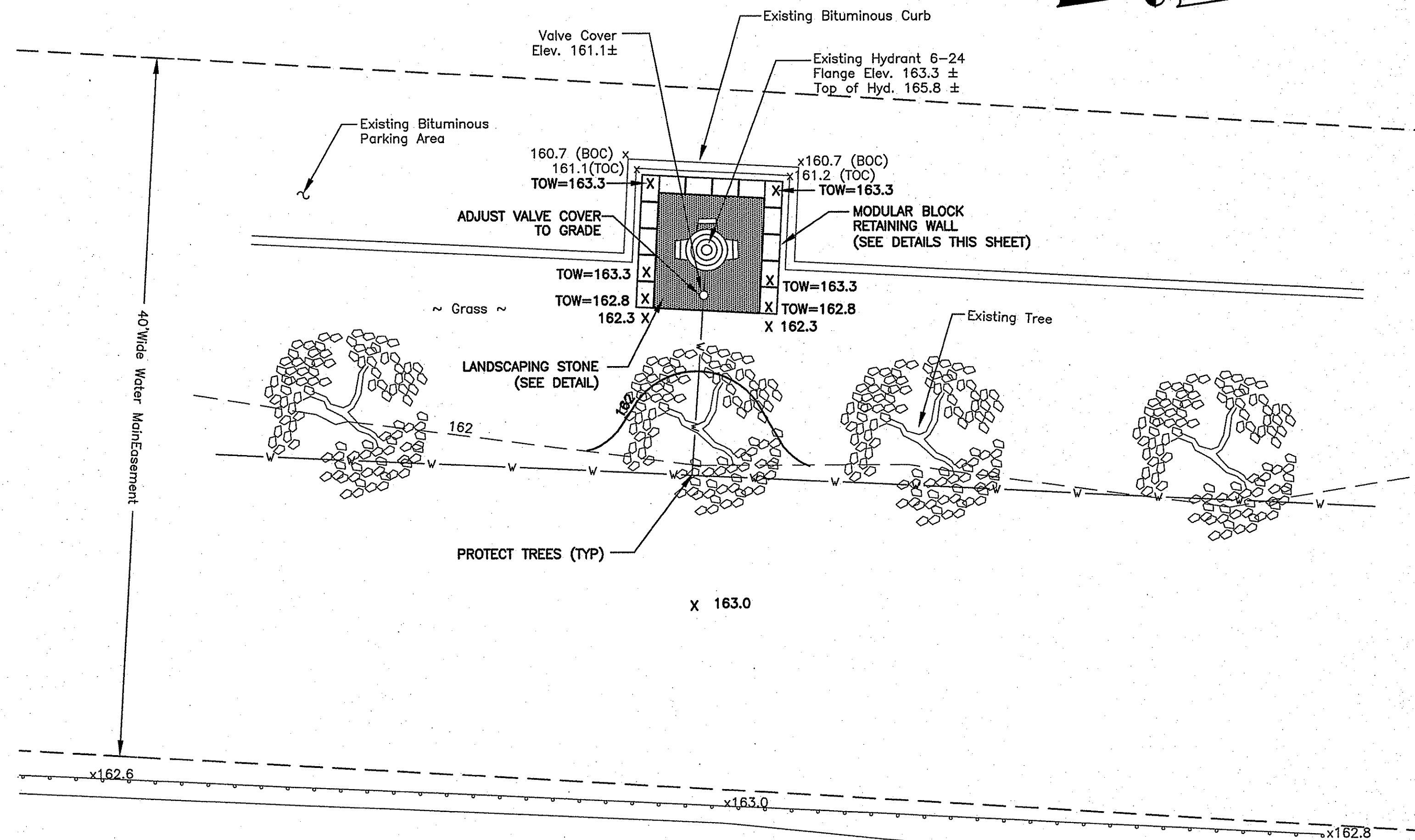
**GRAVEL ACCESS ROAD DETAIL**  
N.T.S.



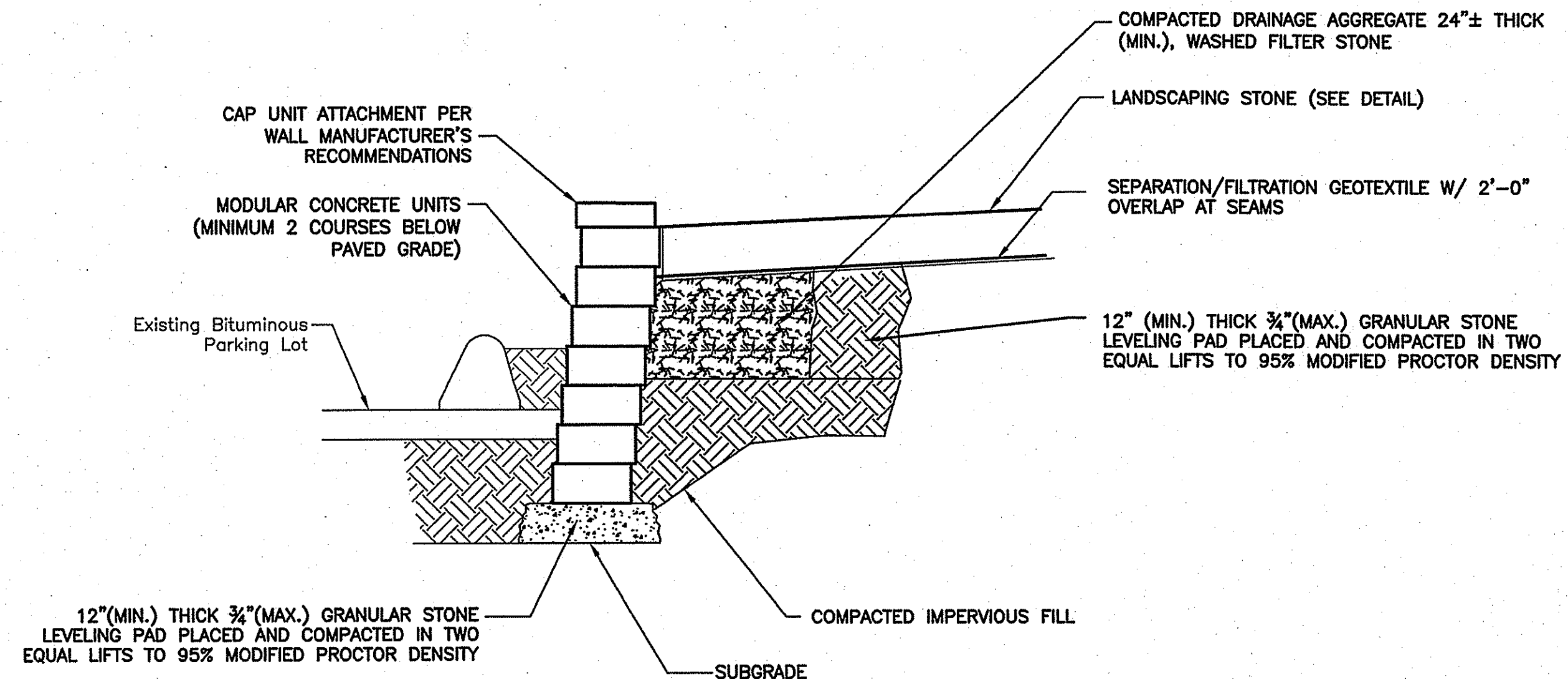
**BITUMINOUS CONCRETE ACCESS DRIVE AND SIDEWALK DETAIL**  
N.T.S.



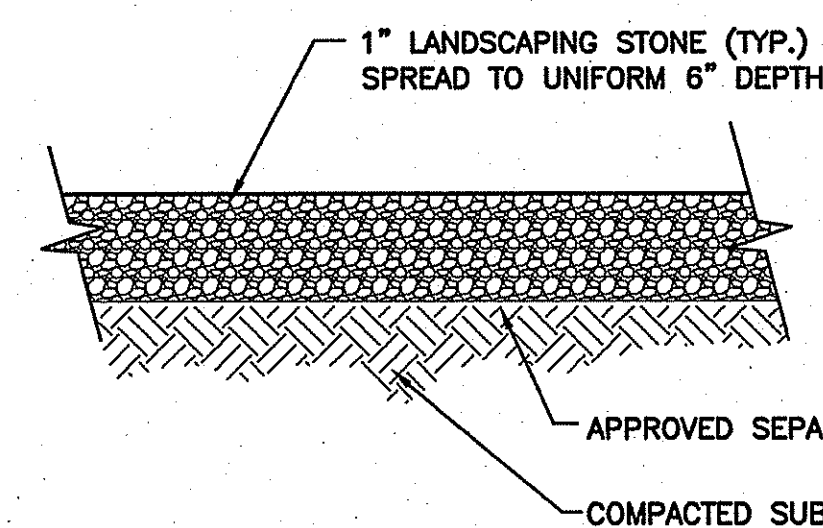
**PRECAST CONCRETE LEACHING BASIN**  
N.T.S.



**LANDSCAPING PLAN AT HYDRANT 6-24**  
SCALE: 1" = 5'-0"



**TYPICAL SECTION AT UNREINFORCED SEGMENTAL RETAINING WALL**  
N.T.S.



**LANDSCAPING STONE DETAIL**  
N.T.S.

DEPARTMENT OF ENVIRONMENTAL MANAGEMENT  
OFFICE OF WATER RESOURCES  
FRESHWATER WETLANDS PROGRAM  
APPROVED WITH CONDITIONS  
AS SPECIFIED IN THE LETTER OF APPROVAL  
DATED JUN 23 2008 FILE # 08-0137  
NO CHANGES ALLOWED WITHOUT PRIOR APPROVAL  
APPROVED PLANS MUST BE AT CONSTRUCTION SITE

|              |          |
|--------------|----------|
| PROJECT NO.: | 18344    |
| DESIGNED BY: | ---      |
| DRAWN BY:    | ---      |
| CHK'D BY:    | ---      |
| DATE:        | 02-20-08 |
| SCALE:       | AS NOTED |
| SHEET NO.:   | 6        |
| SHEET 6 OF 9 |          |

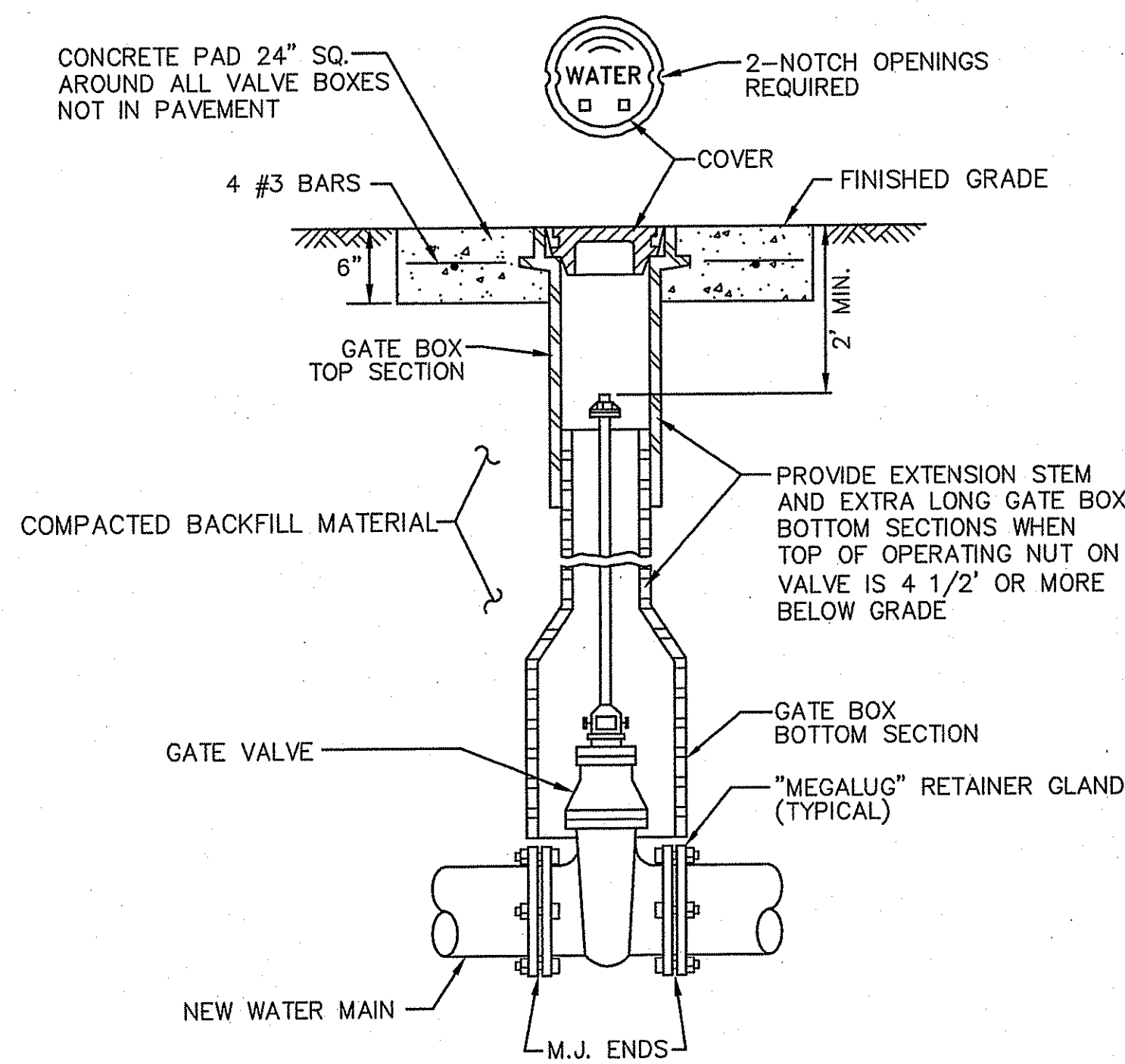
**Maguire Group Inc.**  
Architects/Engineers/Planners  
225 Chapman Street, 4th Floor  
Providence, Rhode Island 02905



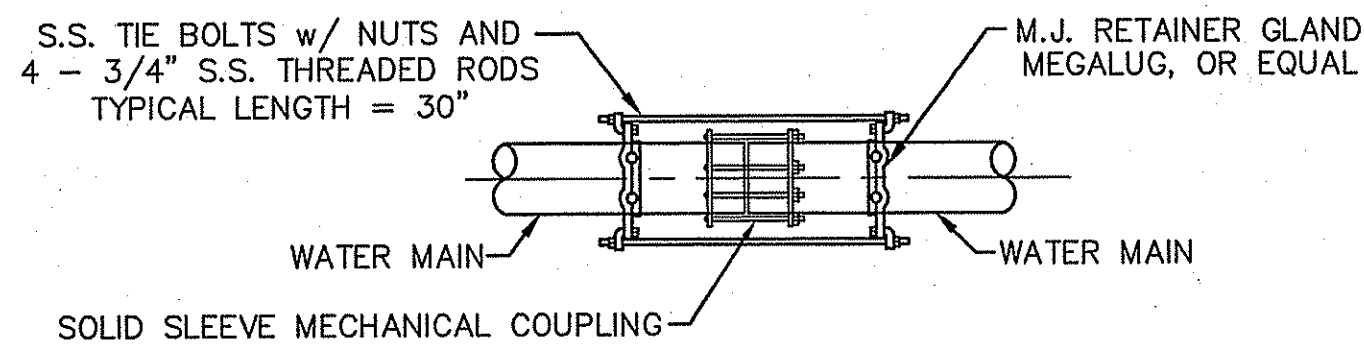
NAVFAC MID-ATLANTIC PWD  
NEWPORT, RHODE ISLAND  
Melville Water System Project  
MISCELLANEOUS SITE DETAILS

STEVEN J. LANDRY  
No. 4889  
REGISTERED PROFESSIONAL ENGINEER

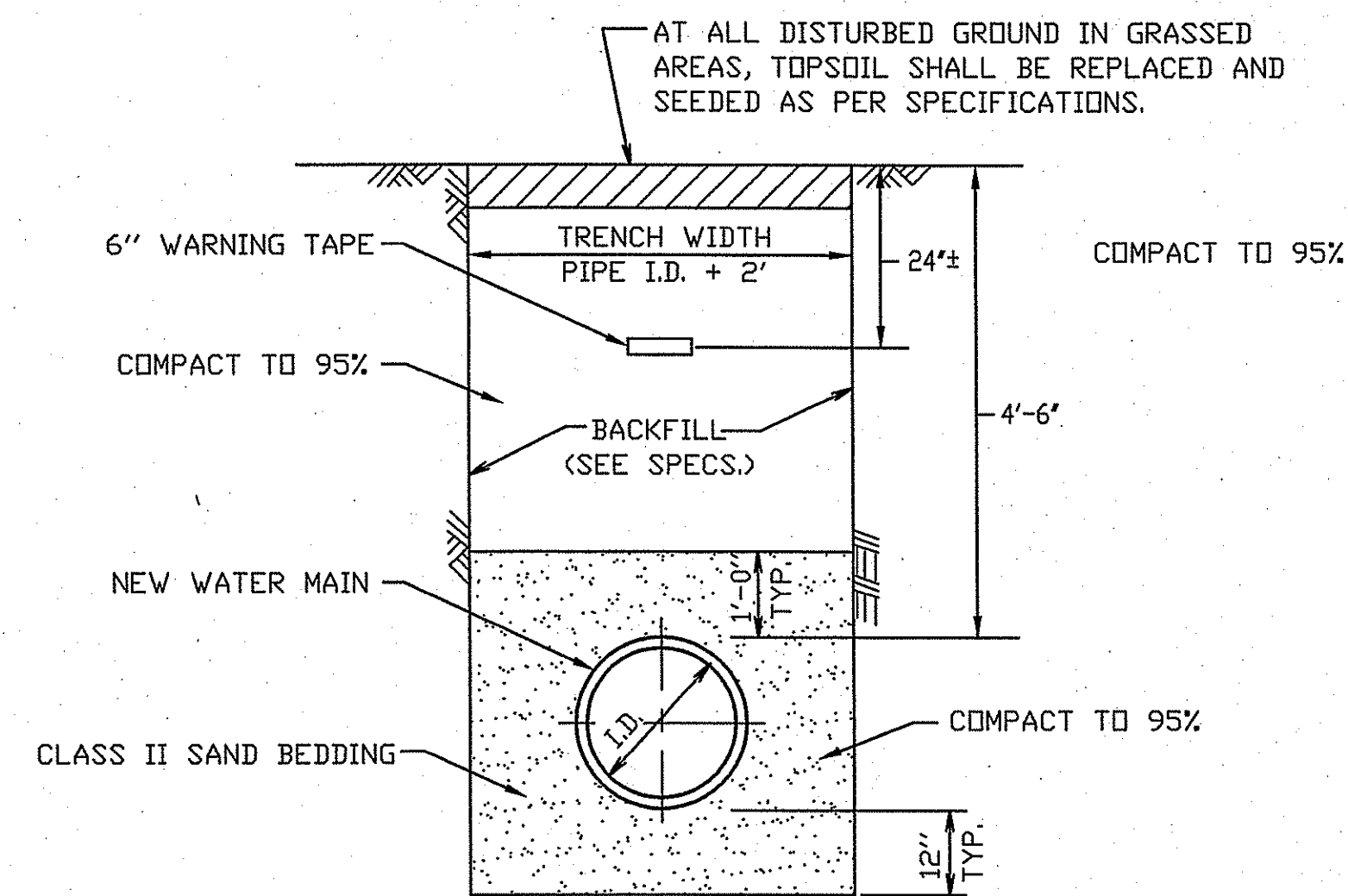
DRAWING FILE: G:\WORK\1834\_Melville\WATER\Wetland Drawing 7.dwg PLOTTED: Feb 20, 2008 - 1:25:15 PM BY: MMSec  
 REVIEWED BY: CIVIL: INTALAGARATE ARCH: INTALAGARATE PLUM: INTALAGARATE FIRE: INTALAGARATE MECH: INTALAGARATE ELEC: INTALAGARATE



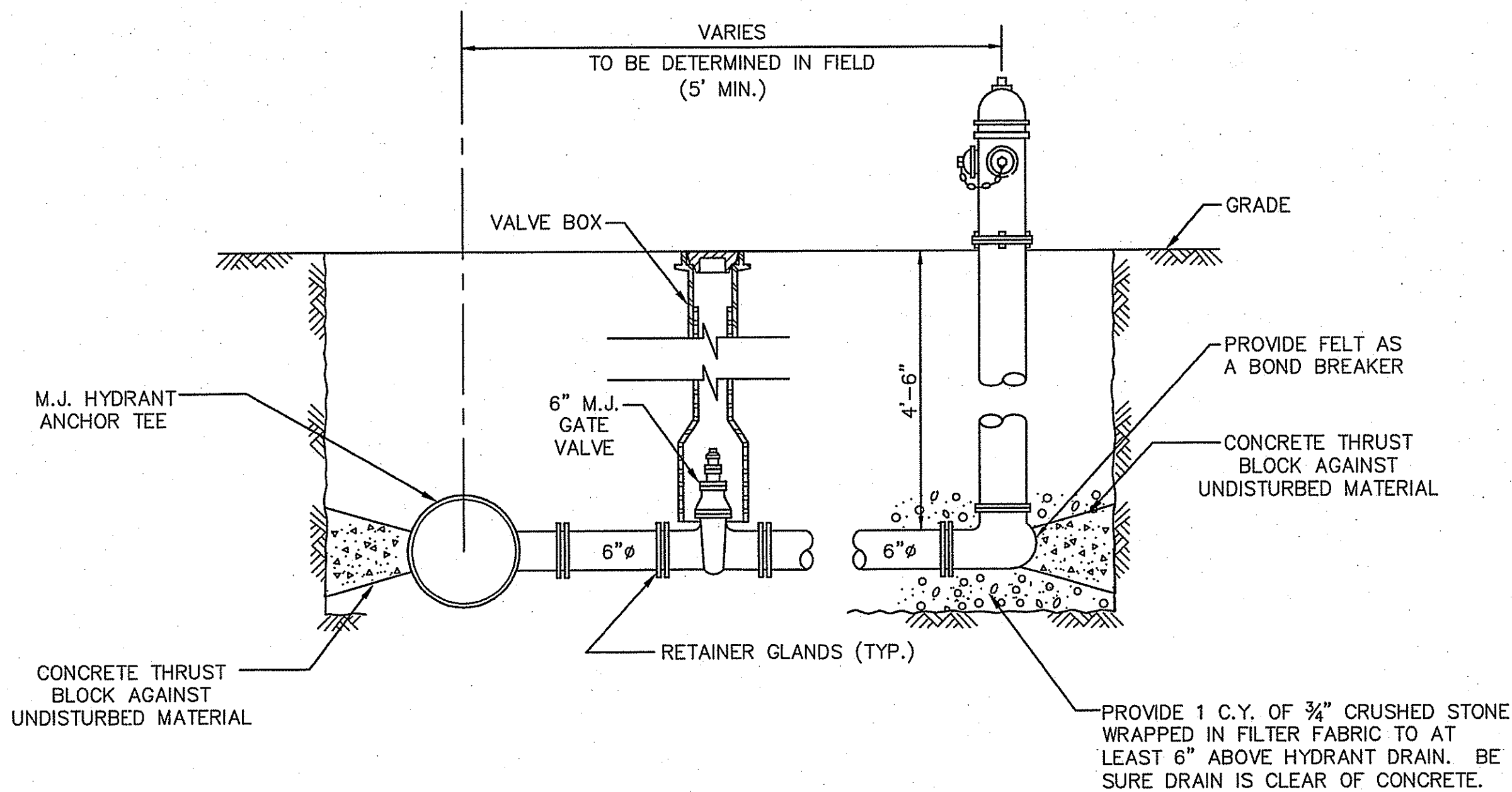
**GATE VALVE AND VALVE BOX DETAIL**



**FLEXIBLE COUPLING DETAIL  
UNDERGROUND INSTALLATION**



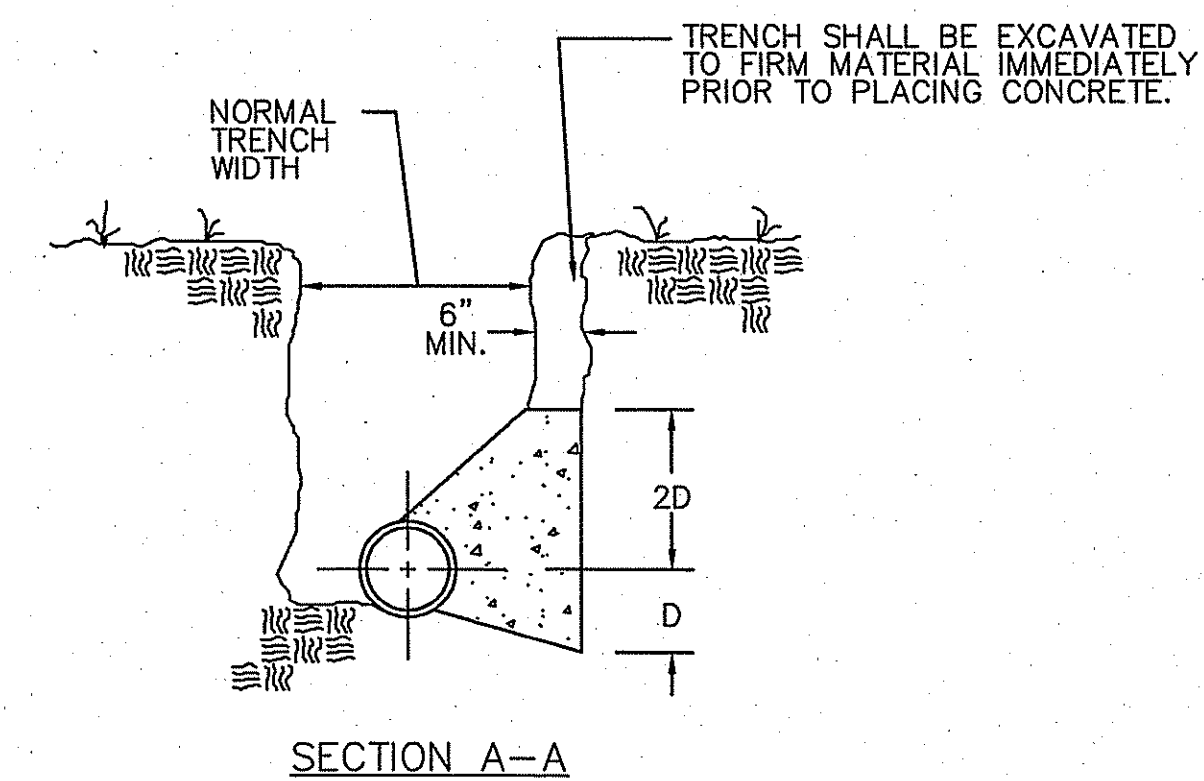
**TYPICAL PIPE TRENCH DETAIL**



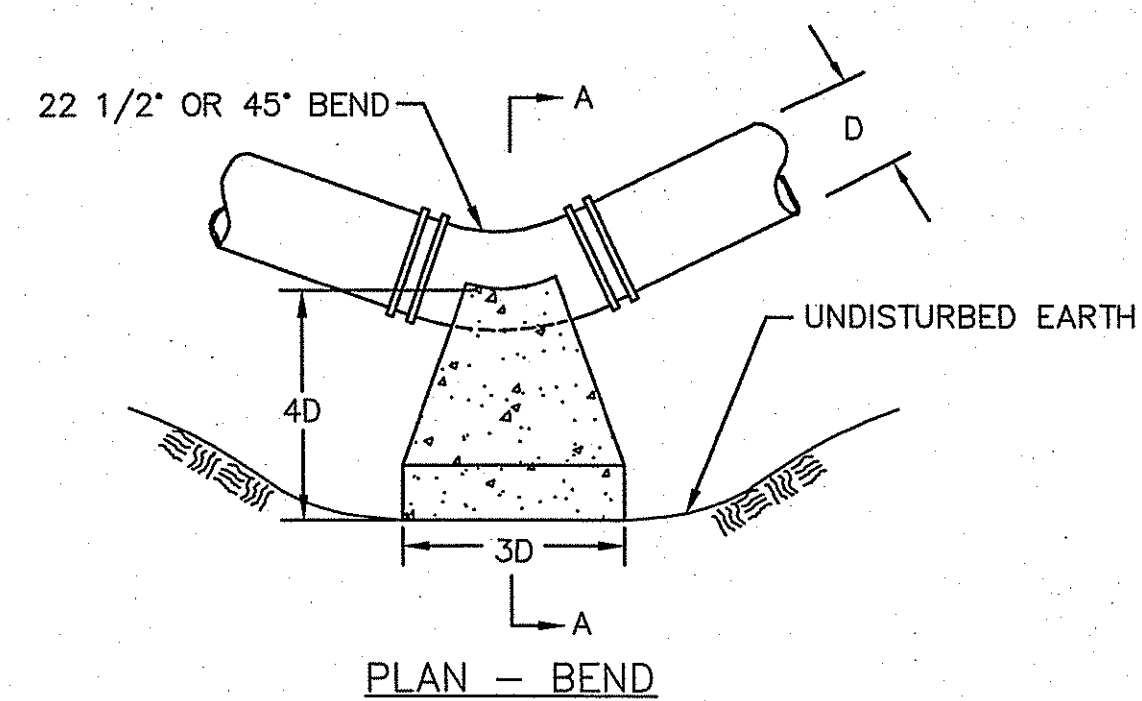
**NOTES:**

1. ALL MATERIALS TO BE MECHANICAL JOINT AND RESTRAINED WITH MEGALUG RETAINER GLANDS.
2. HYDRANT TO BE PAINTED PER PORTSMOUTH WATER AND FIRE DISTRICT'S REQUIREMENTS AFTER TESTING.
3. ORIENTATION WILL VARY FOR EACH LOCATION.

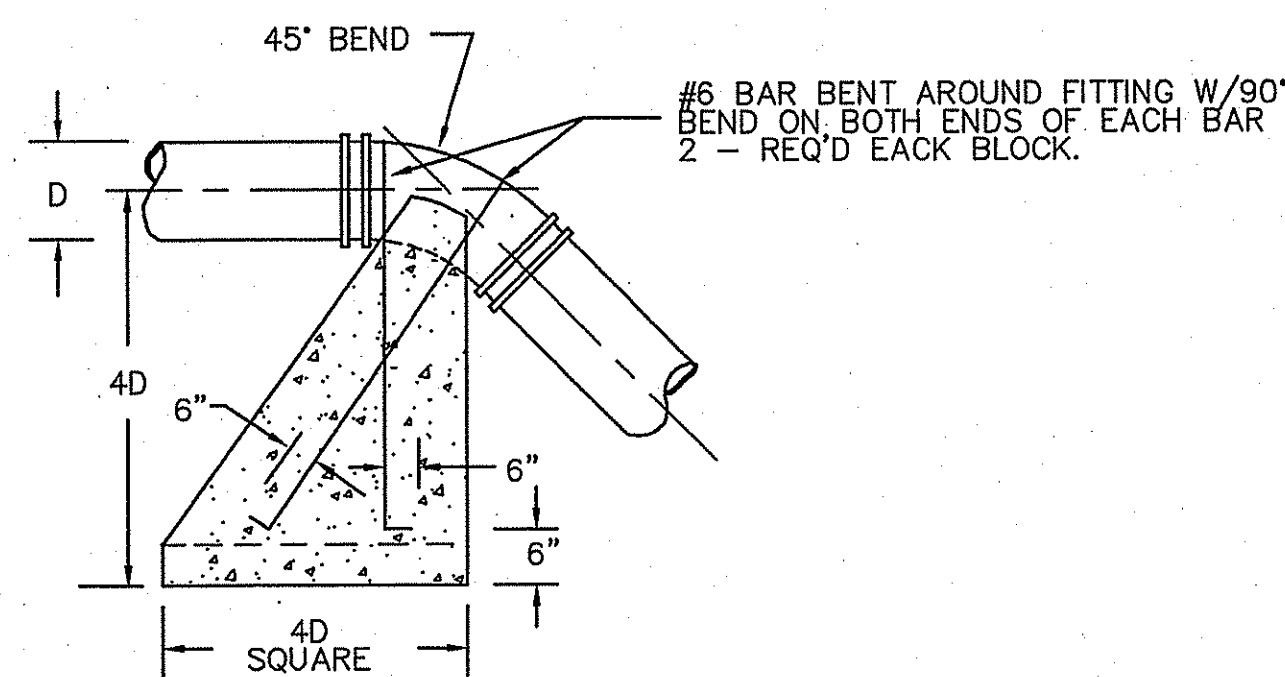
**HYDRANT ASSEMBLY AND VALVE DETAIL**



**SECTION A-A**



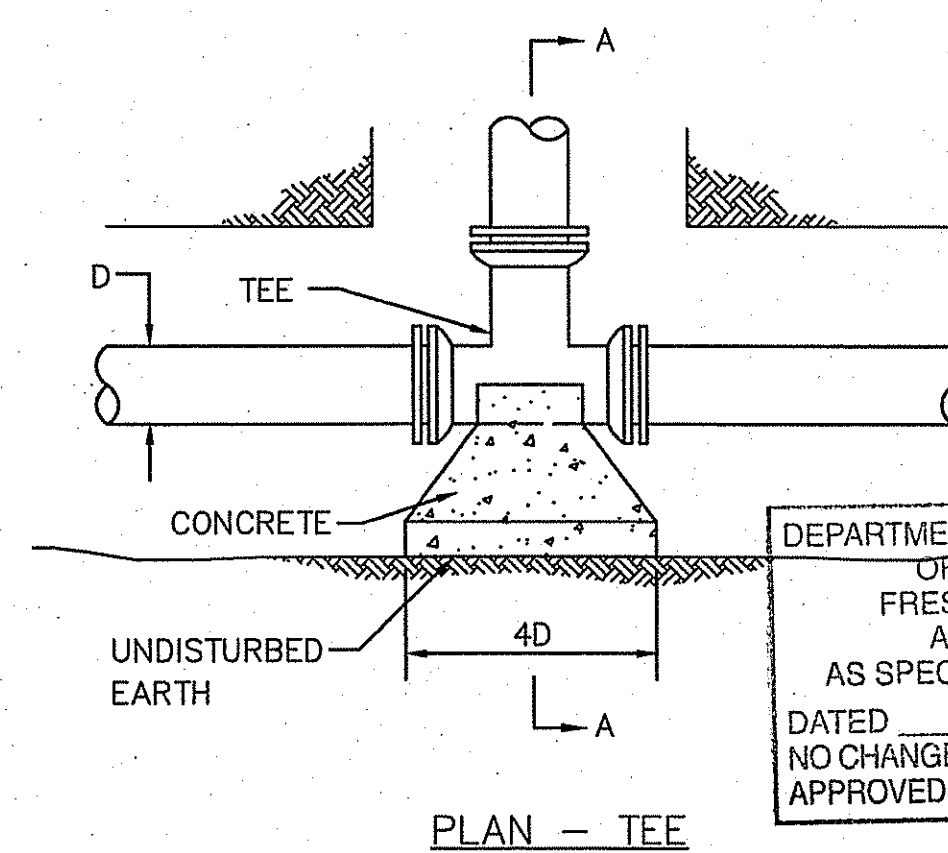
**PLAN - BEND**



**VERTICAL THRUST BLOCK DETAIL**

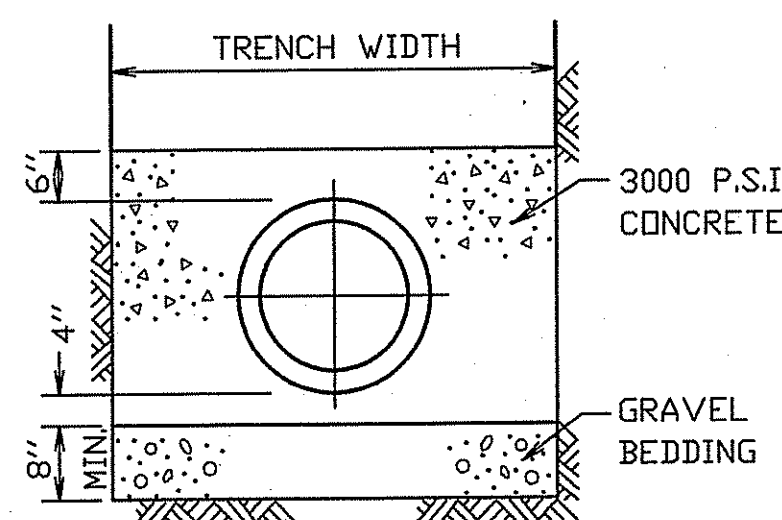
**NOTES:**

1. 3000 PSI CONCRETE TO BE USED FOR THRUST BLOCKS
2. THRUST BLOCKS SHALL BEAR AGAINST UNDISTURBED EARTH.
3. PROVIDE FELT AS BOND BREAKER WHERE PIPE CONTACTS CONCRETE.

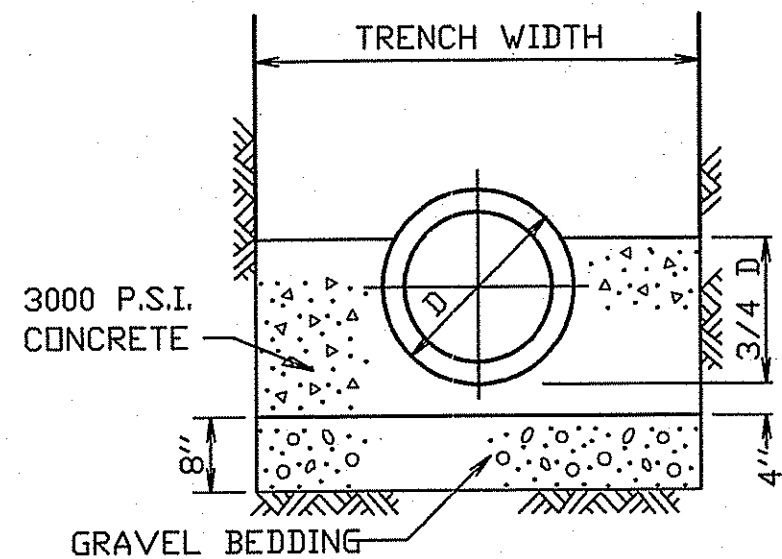


**PLAN - TEE**

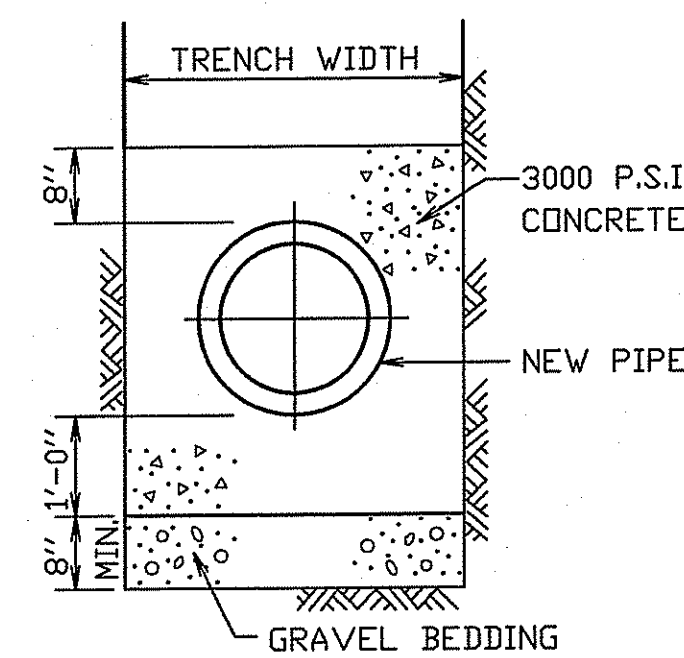
**HORIZONTAL THRUST BLOCK DETAIL**



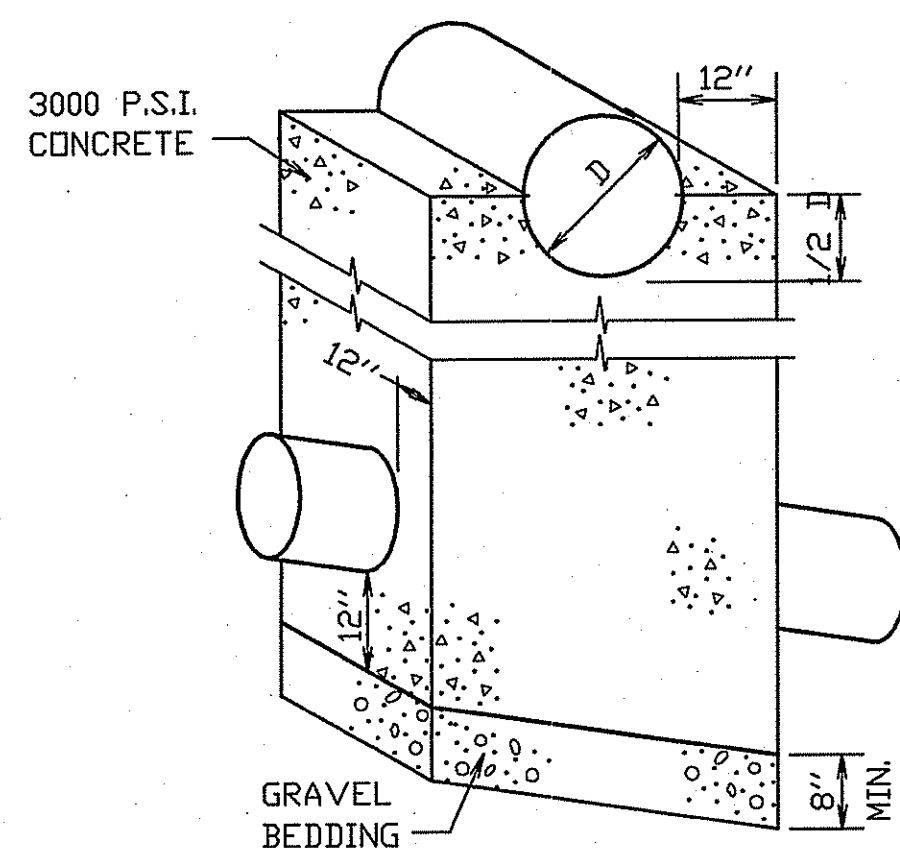
**FULL CRADLE**



**HALF CRADLE**



**PIPE ENCASEMENT**



**CROSSING PIPE CRADLE**

**NOTE:**  
WHERE NEW PIPE CROSSES UNDER OR OVER, WITHIN 12 INCHES OF EXISTING UTILITIES CONCRETE CRADLE SHALL BE USED AS DIRECTED BY THE ENGINEER.

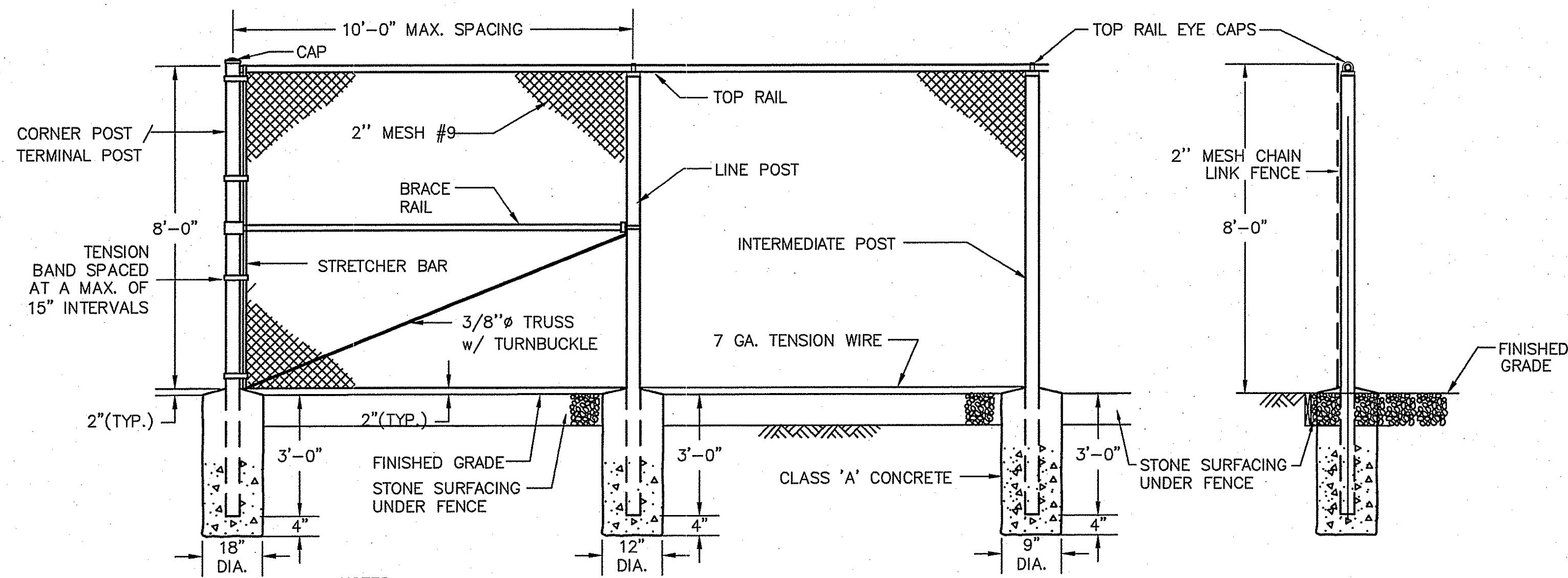
**CONCRETE CRADLE AND ENCASEMENT DETAILS**

|      |             |
|------|-------------|
| BY   | APP'D       |
| DATE | DESCRIPTION |
| MARK | DATE        |

**Maguire Group Inc.**  
 Architects/Engineers/Planners  
 225 Chapman Street, 4th Floor  
 Providence, Rhode Island 02905

|              |          |
|--------------|----------|
| PROJECT NO.: | 18344    |
| DESIGNED BY: | ---      |
| DRAWN BY:    | ---      |
| CHK'D BY:    | ---      |
| DATE:        | 02-20-08 |
| SCALE:       | NONE     |
| SHEET NO.:   | 7        |
| SHEET        | 7 OF 9   |

DRAWING FILE: G:\JOBS\18344\_Melville\WWSR\Method Drawing 8.dwg PLOTTED: Feb 20, 2008 - 12:48pm BY: MRCCL

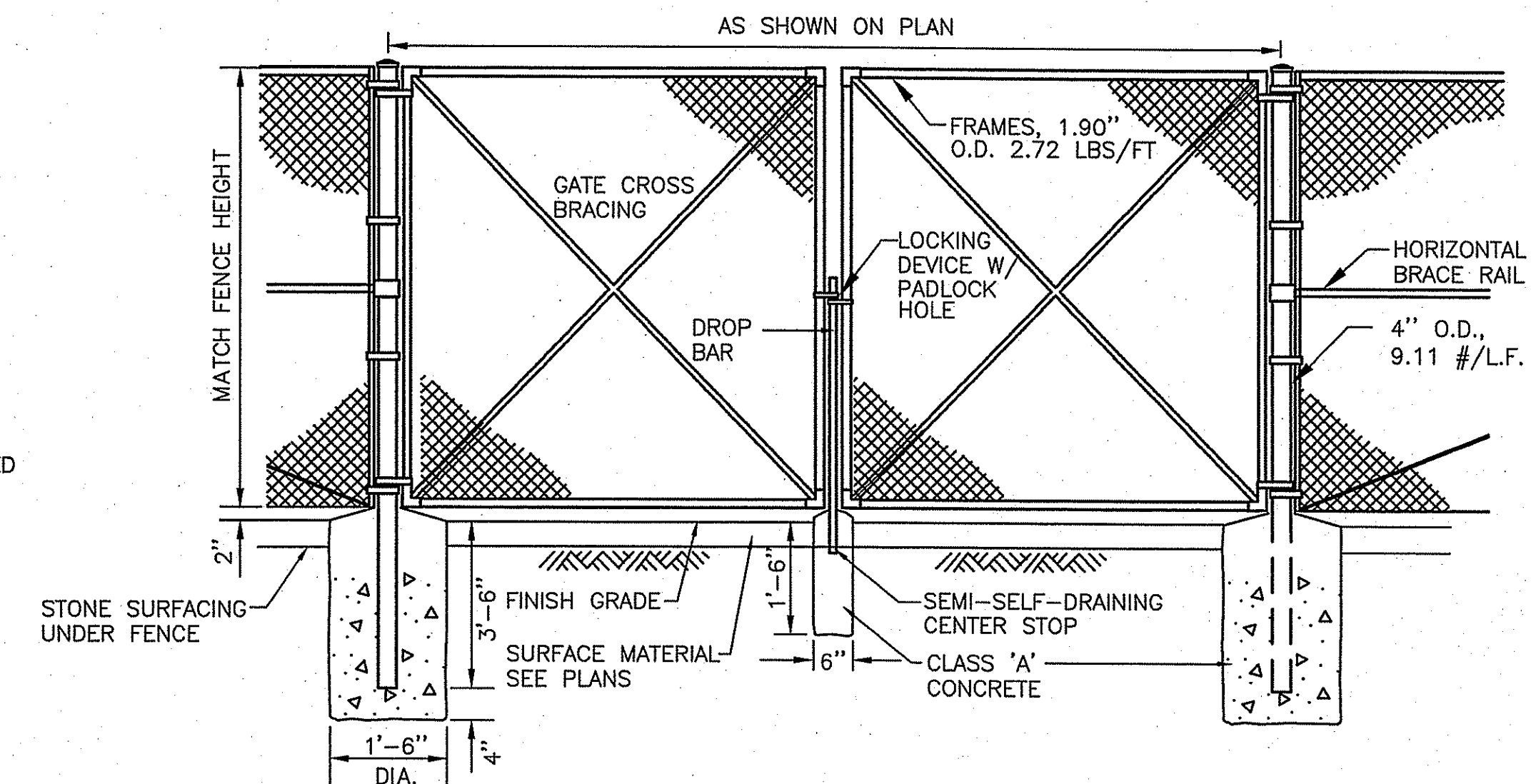


**NOTES:**

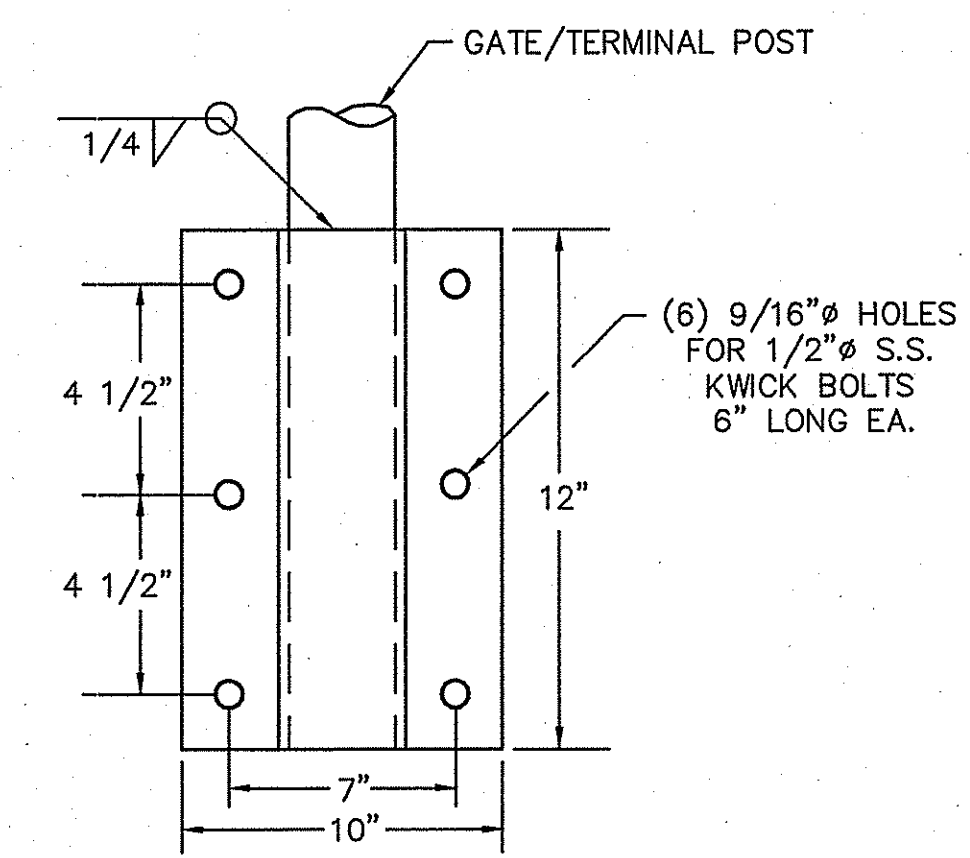
1. ALL TERMINAL POSTS SHALL BE BRACED TO ADJACENT POSTS.
2. REFER TO THE CONTRACT SPECIFICATIONS FOR DETAILED CONSTRUCTION REQUIREMENTS.
3. PROVIDE CAPS ON ALL POSTS.
4. CORNER POSTS SHALL BE INSTALLED WHERE CHANGE IN FENCE HORIZONTAL ALIGNMENT EXCEEDS 15 DEGREES.

**CHAIN LINK FENCE IN GROUND**

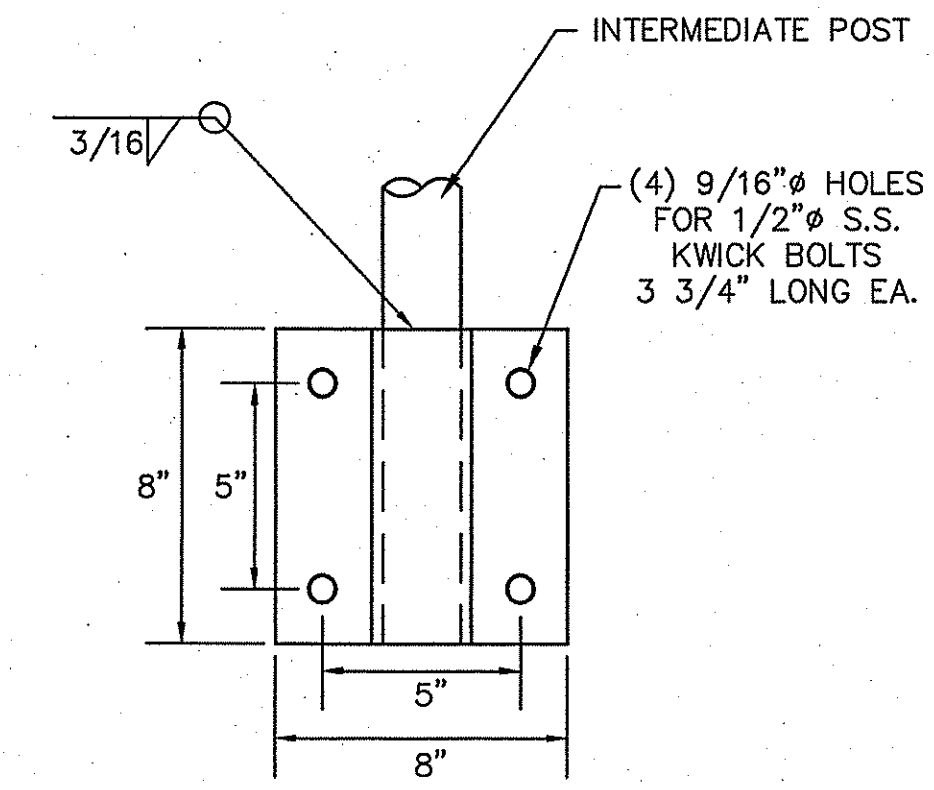
**TYPICAL FENCE SECTION IN GROUND**



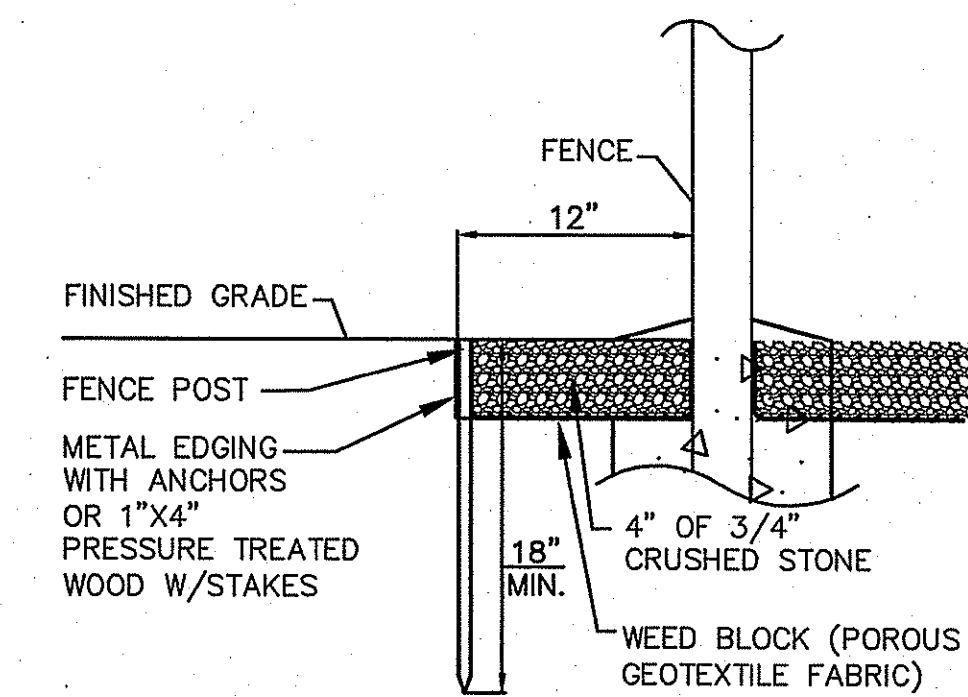
**DOUBLE SWING GATE DETAIL**



**GATE/TERMINAL POST MOUNTING BRACKET ON WALL**

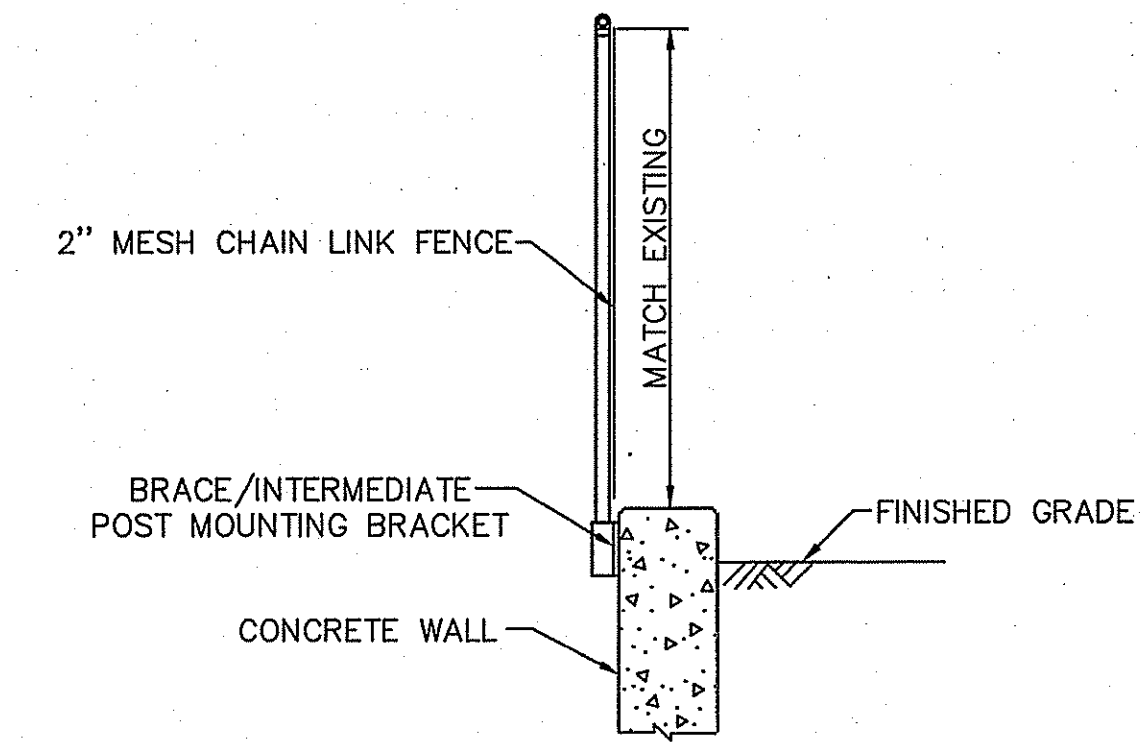


**BRACE/INTERMEDIATE POST MOUNTING BRACKET ON WALL**

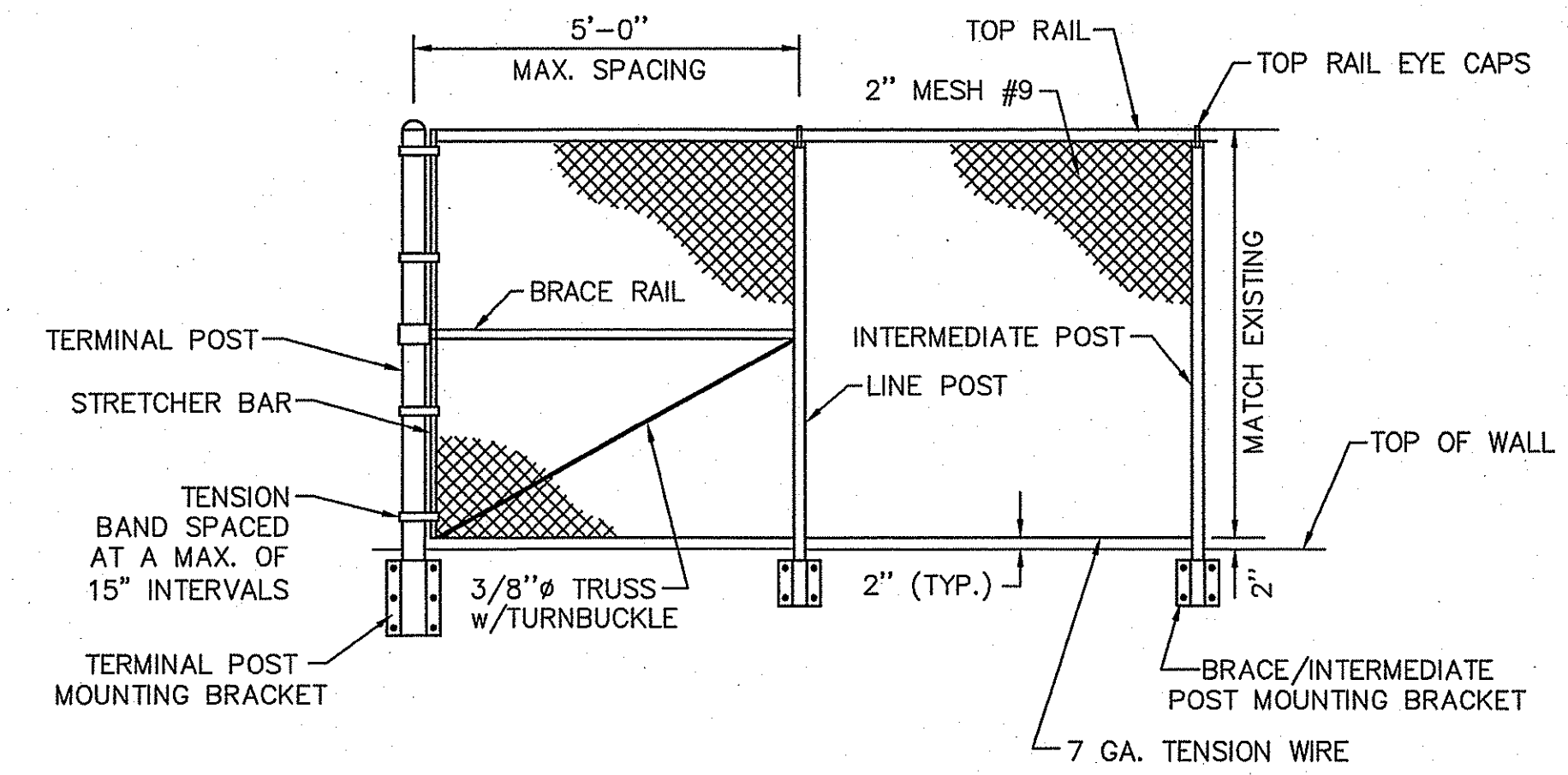


**NOTE:**  
INSTALL 2"x4" WOOD LANDSCAPING EDGING WITH STAKES AT PERIMETER OF STONE SURFACING IN LOCATIONS WHERE STONE ABUTS GRASSED AREAS OR LANDSCAPED AREAS. WOOD AND STAKES TO BE PRESSURE TREATED. METAL EDGING ACCEPTABLE SUBSTITUTE (SUBMIT FOR APPROVAL).

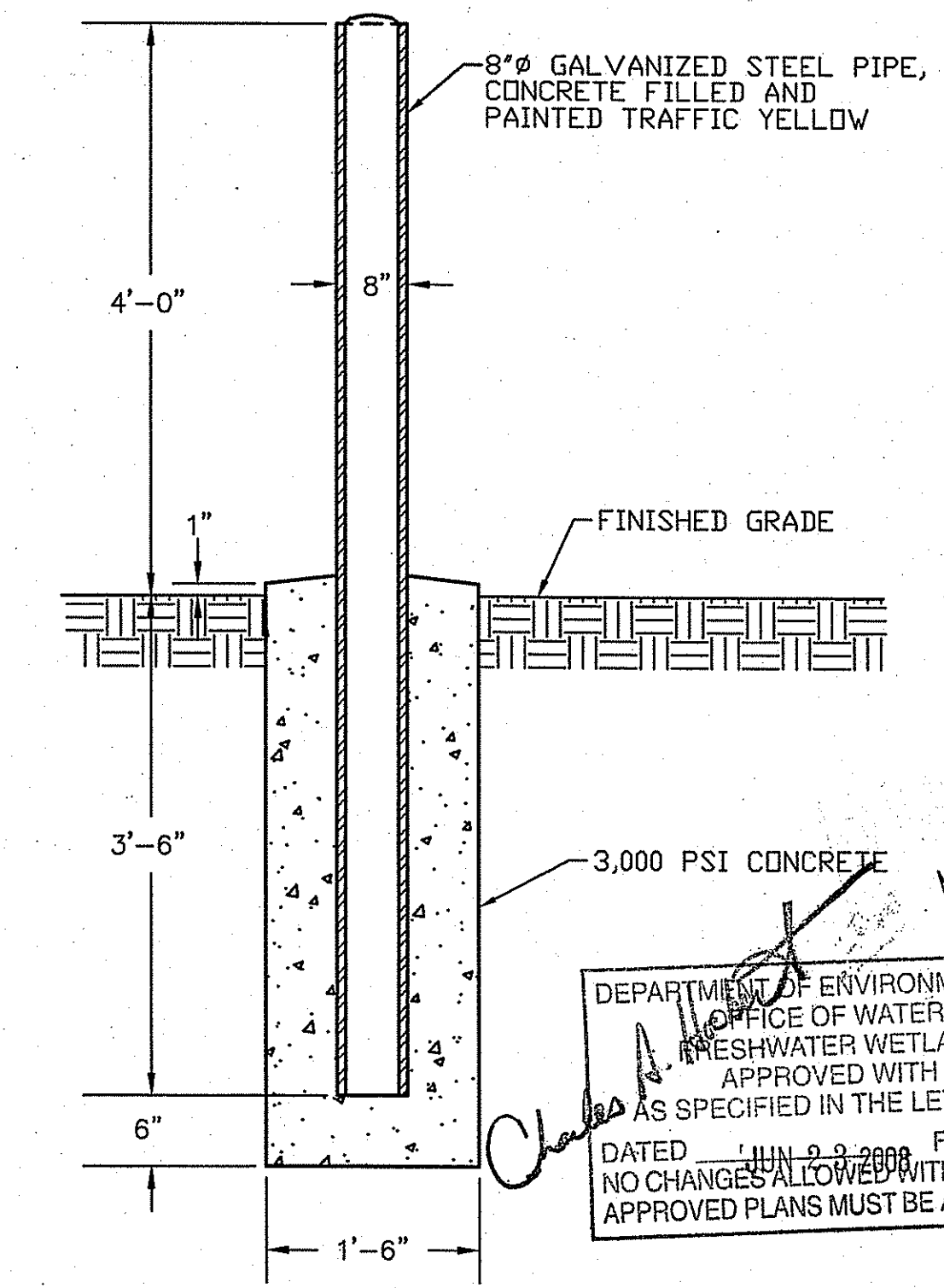
**STONE SURFACING UNDER FENCE**



**TYPICAL FENCE SECTION ON WALL**



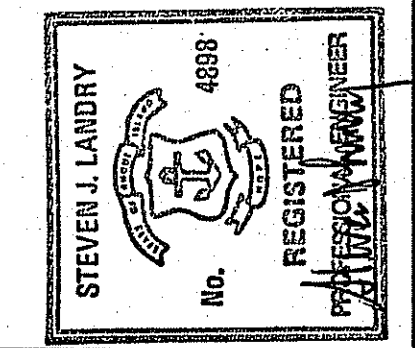
**CHAIN LINK FENCE ON WALL**



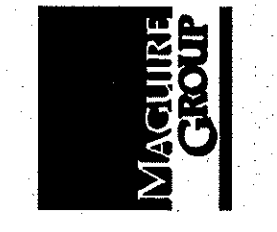
**BOLLARD DETAIL**

DEPARTMENT OF ENVIRONMENTAL MANAGEMENT  
OFFICE OF WATER RESOURCES  
FRESHWATER WETLANDS PROGRAM  
APPROVED WITH CONDITIONS  
AS SPECIFIED IN THE LETTER OF APPROVAL  
DATED JUN 9 2008 FILE # 08-0137  
NO CHANGES ALLOWED WITHOUT PRIOR APPROVAL  
APPROVED PLANS MUST BE AT CONSTRUCTION SITE

| MARK | DATE | DESCRIPTION | BY | APP'D |
|------|------|-------------|----|-------|
|      |      |             |    |       |
|      |      |             |    |       |
|      |      |             |    |       |



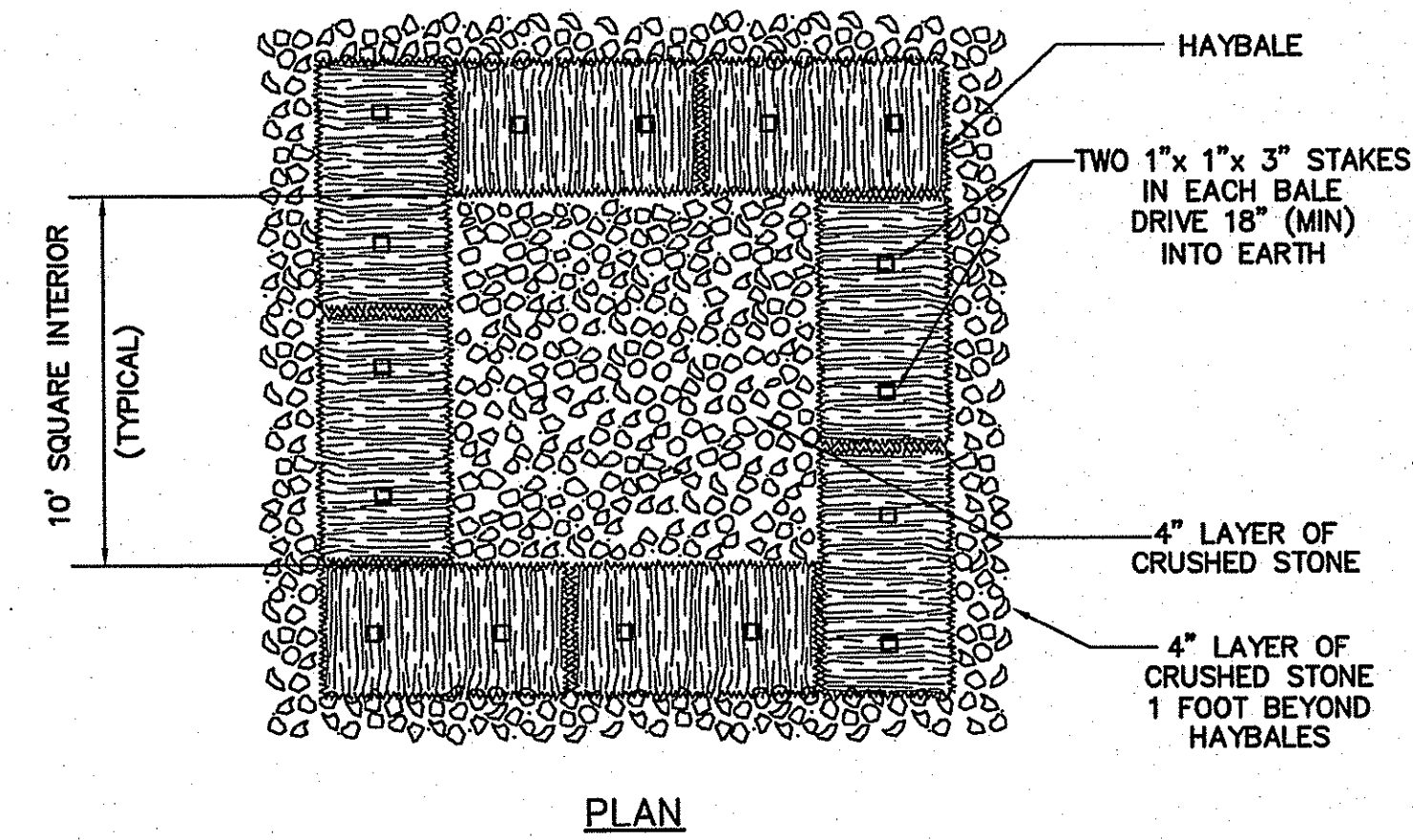
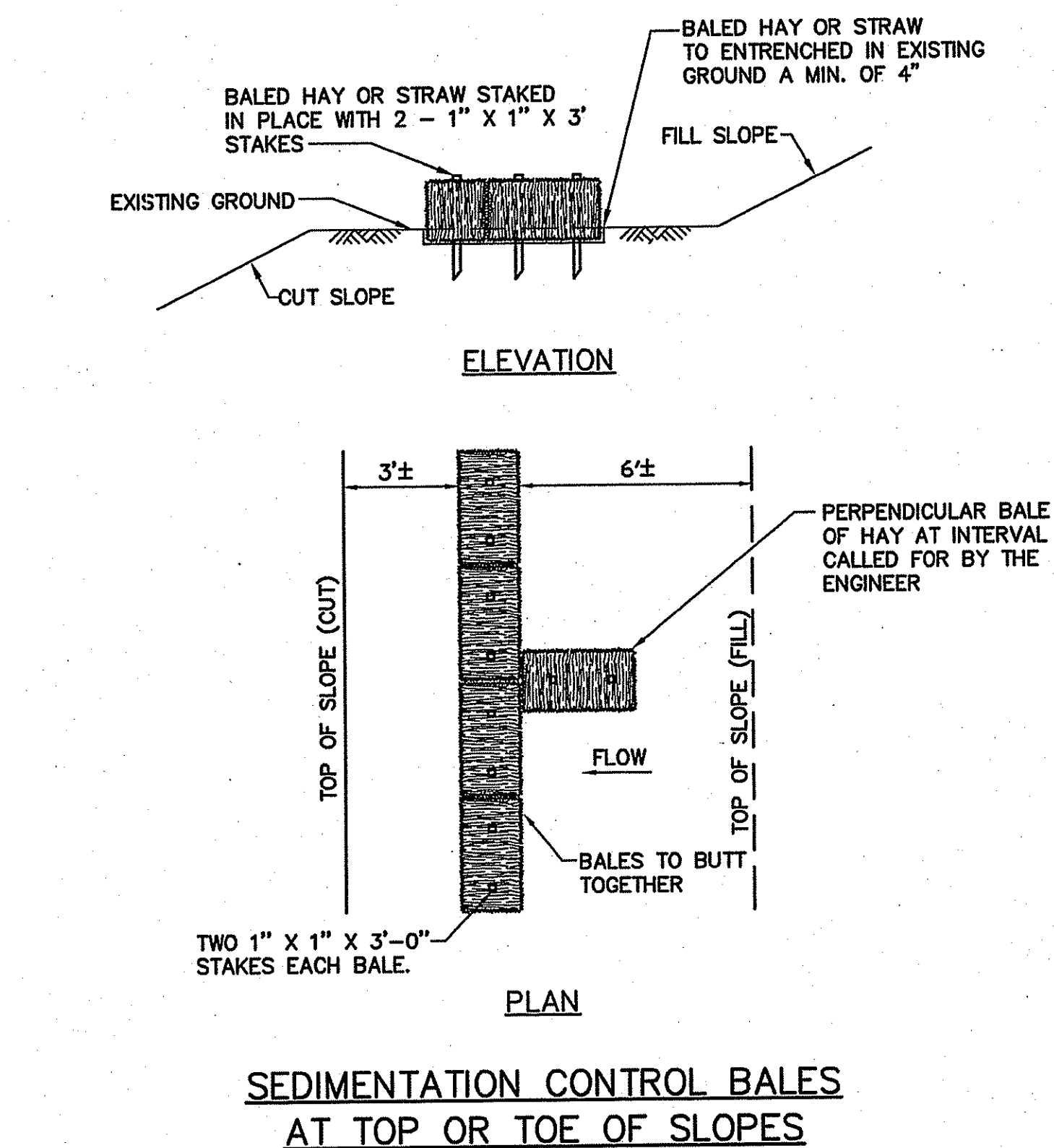
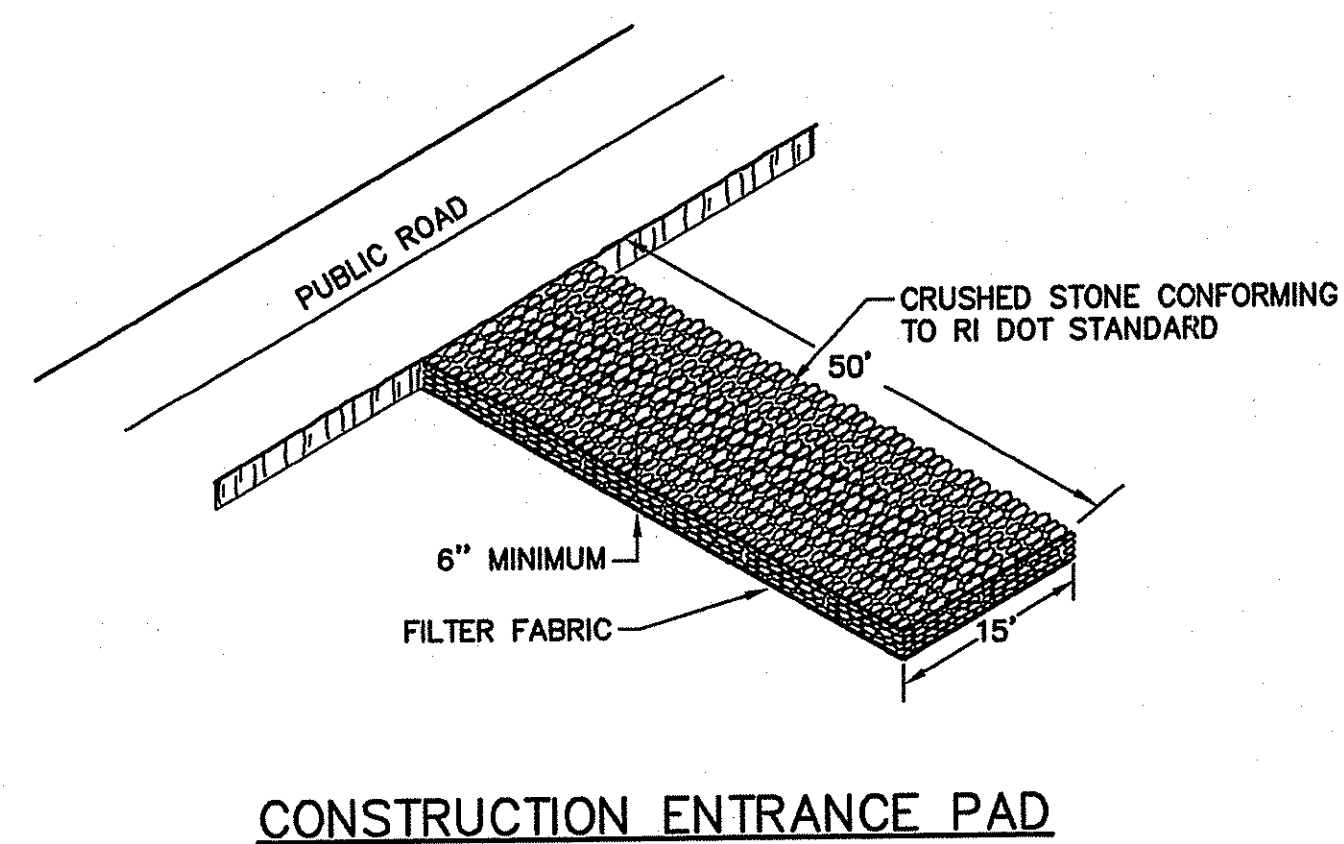
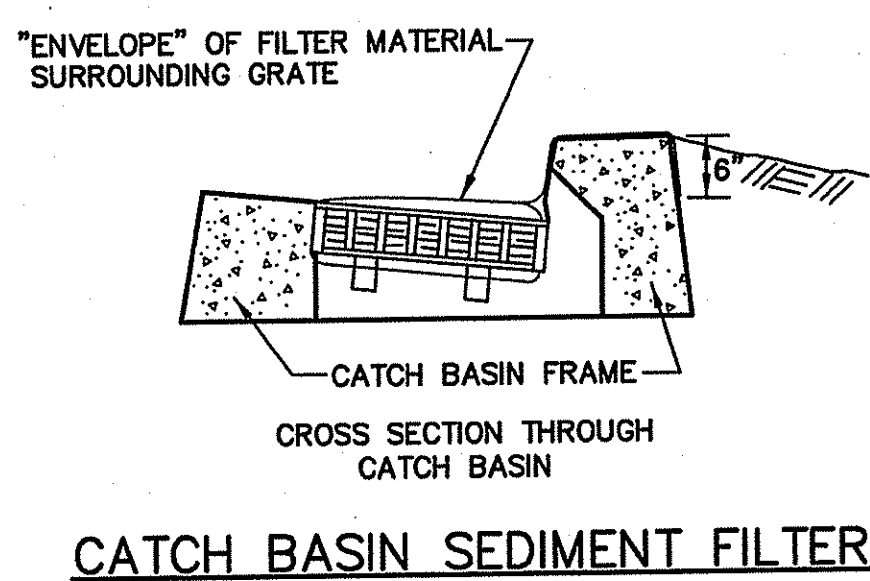
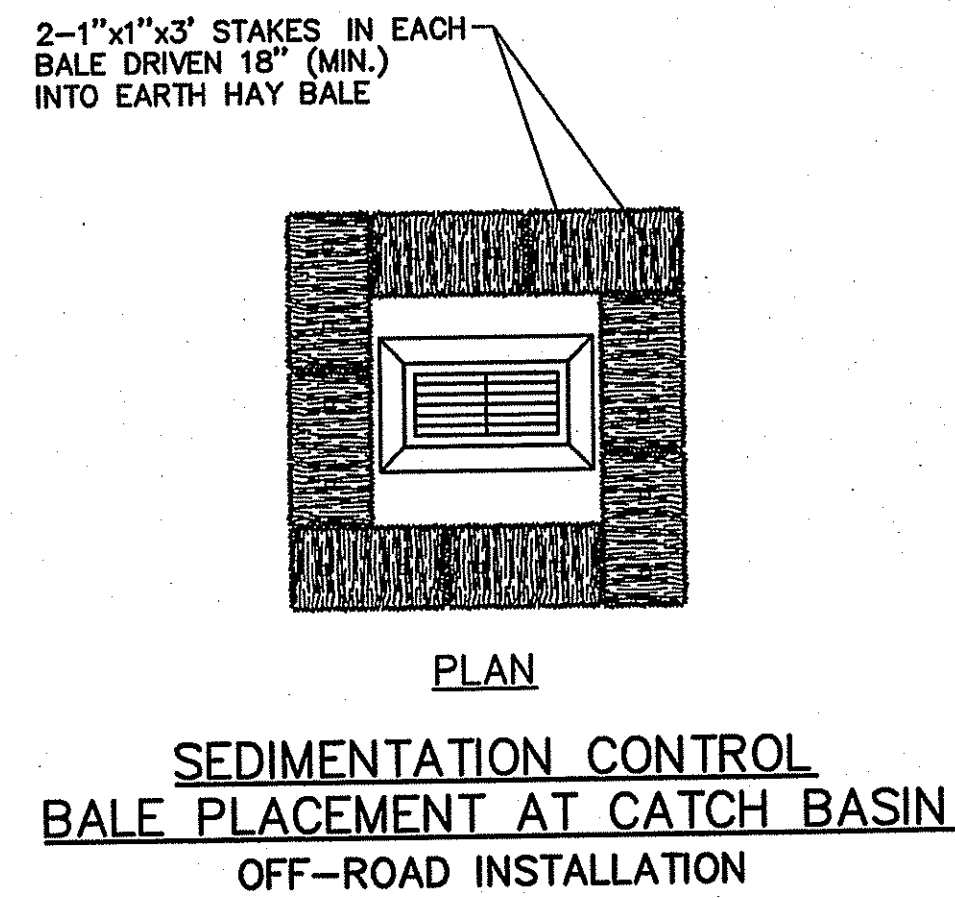
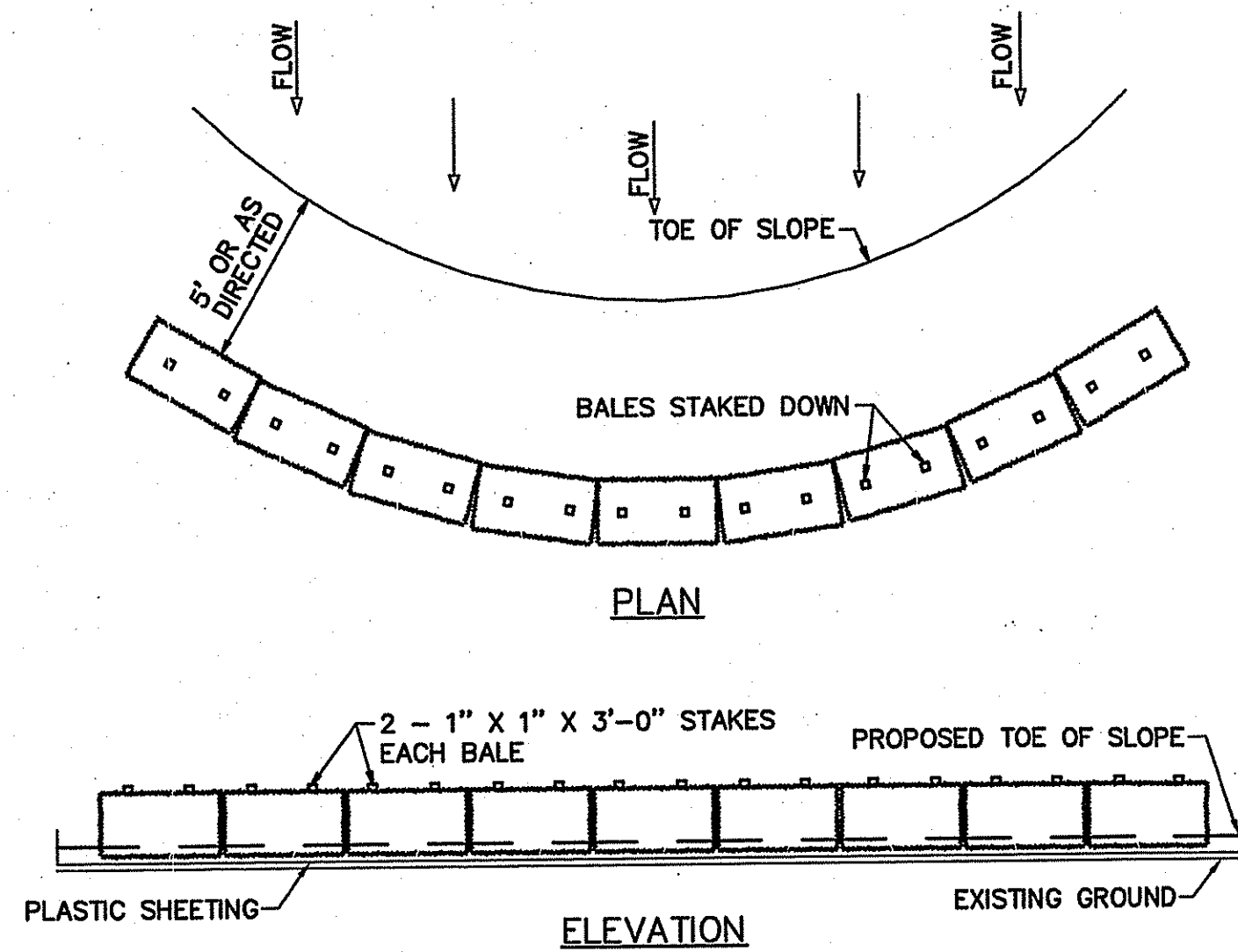
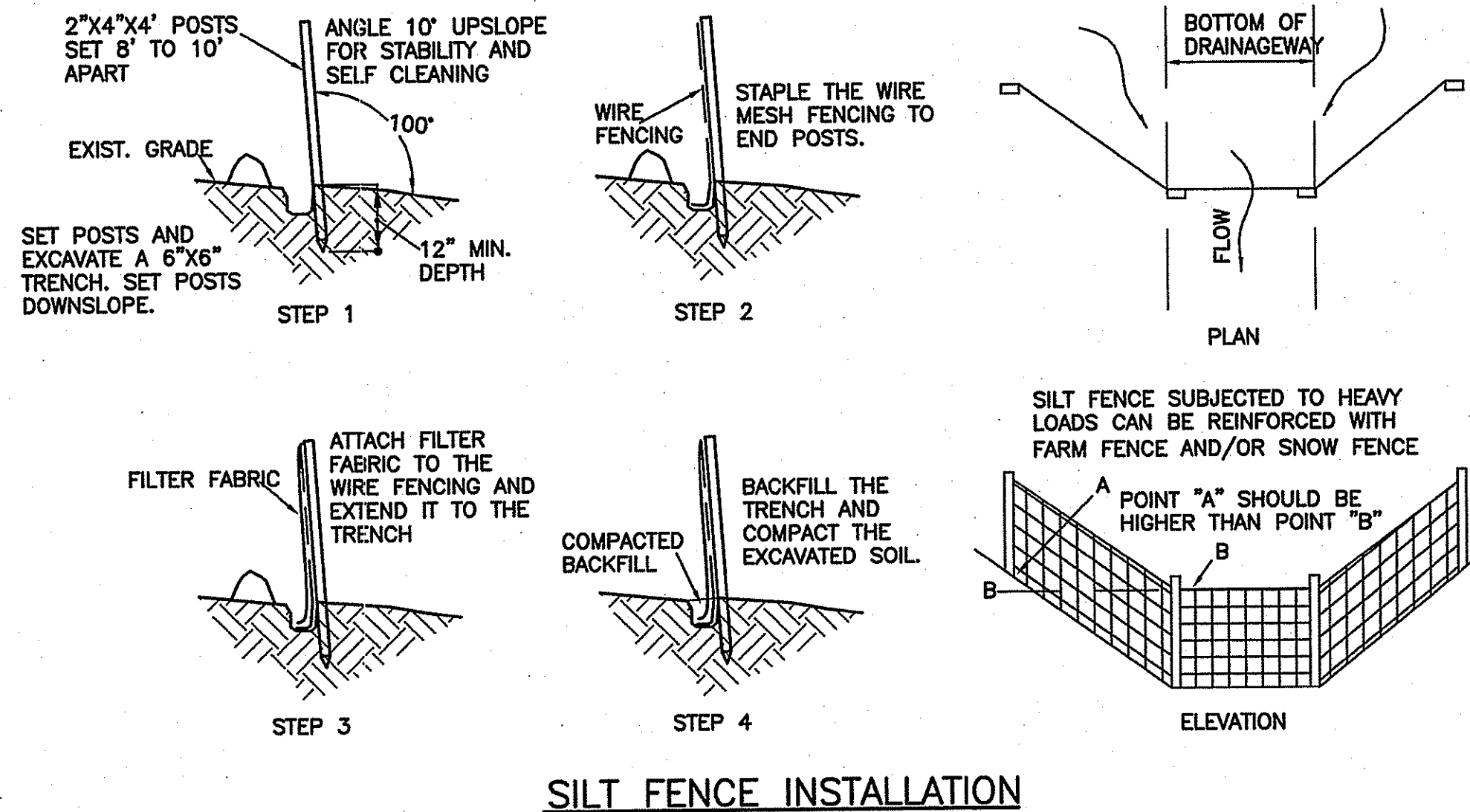
**Maguire Group Inc.**  
Architects/Engineers/Planners  
225 Chapman Street, 4th Floor  
Providence, Rhode Island 02905



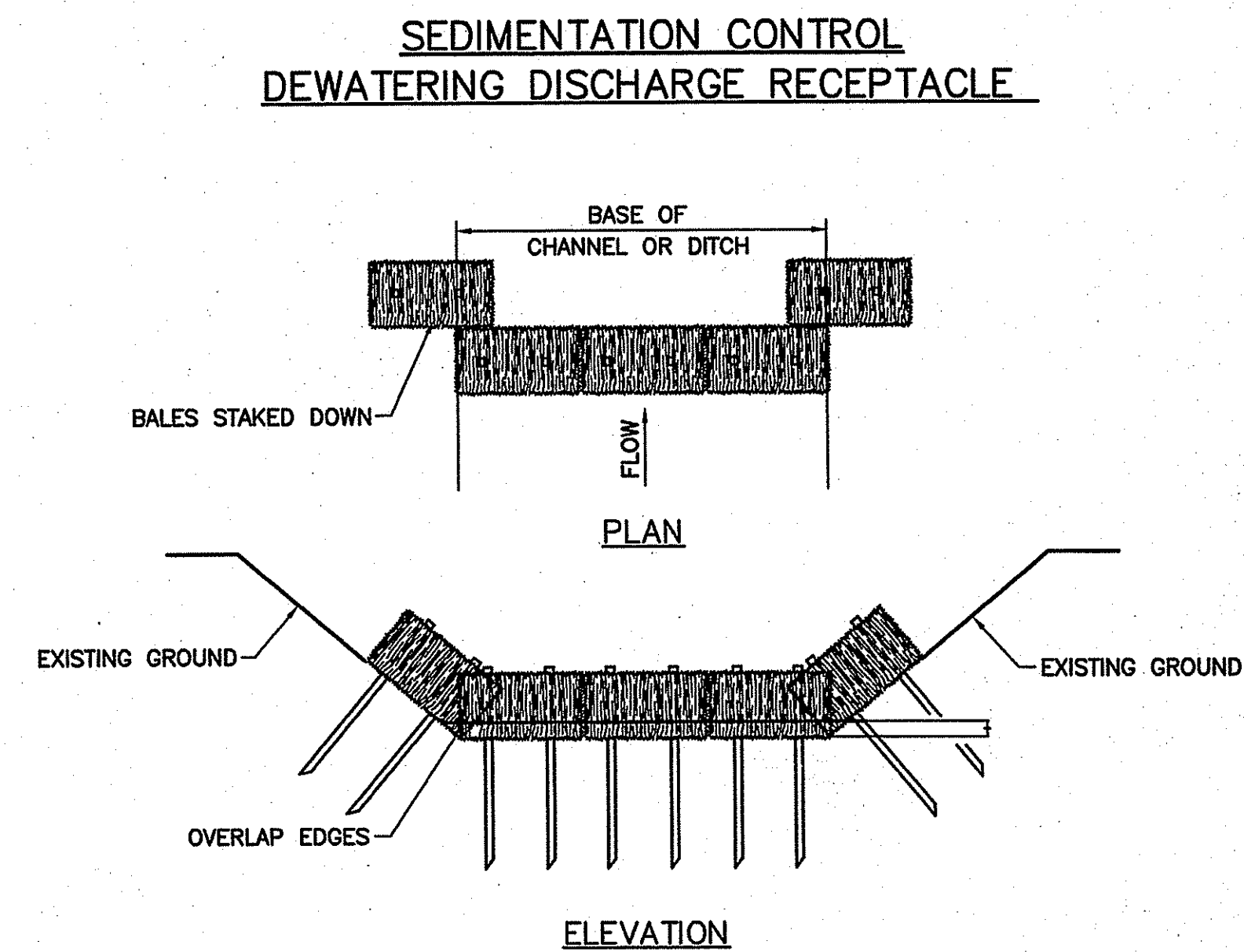
NAVFAC MID-ATLANTIC PWD  
NEWPORT, RHODE ISLAND  
Melville Water System Project  
MISCELLANEOUS SITE DETAILS

|              |          |
|--------------|----------|
| PROJECT NO.: | 18344    |
| DESIGNED BY: | ---      |
| DRAWN BY:    | ---      |
| CHK'D BY:    | ---      |
| DATE:        | 02-20-08 |
| SCALE:       | NONE     |
| SHEET NO.:   | 8        |

DRAWING FILE: C:\JOBS\18344\_Melville\ACAD\WATER\EROSION\2008-12-25.dwg PLOTTED: Feb 20, 2008 - 12:50pm BY: MJK/ced  
 REVIEWED BY: CIVIL: INITIAL/DATE ARCH: INITIAL/DATE STRUC: INITIAL/DATE PLUM: INITIAL/DATE FIRE: INITIAL/DATE MECH: INITIAL/DATE ELEC: INITIAL/DATE

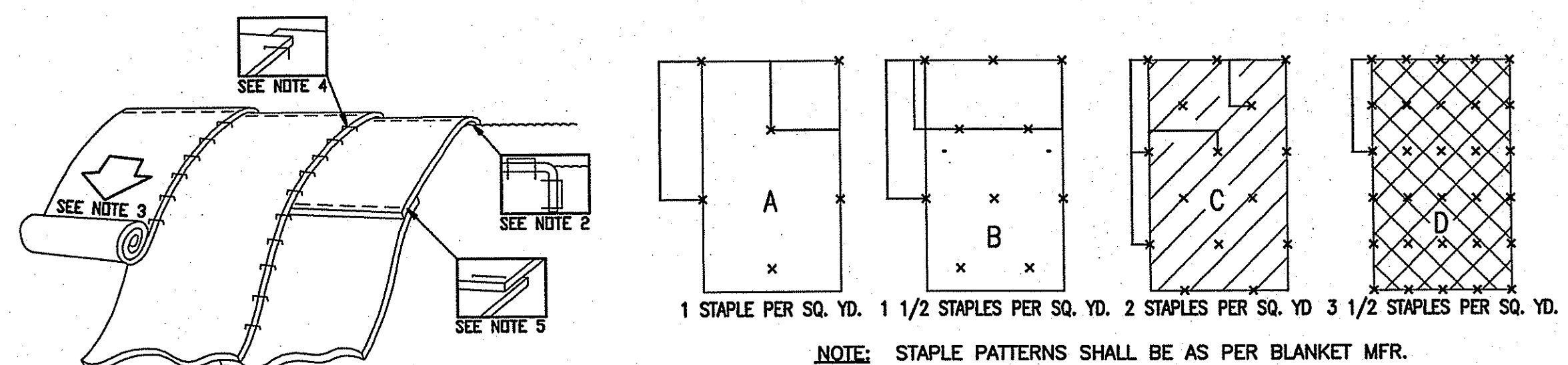


- NOTES:
- REMOVE ALL SEDIMENT ACCUMULATION DAILY OR AS REQUIRED TO ALLOW FOR PROPER FILTERING OF WATER.
  - CONTRACTOR TO RESTORE AREA TO ORIGINAL CONDITIONS AT NO ADDITIONAL COST TO THE OWNER.
  - QUANTITY OF RECEPTACLES TO BE INCREASED AS REQUIRED DUE TO FLOW CONDITIONS.

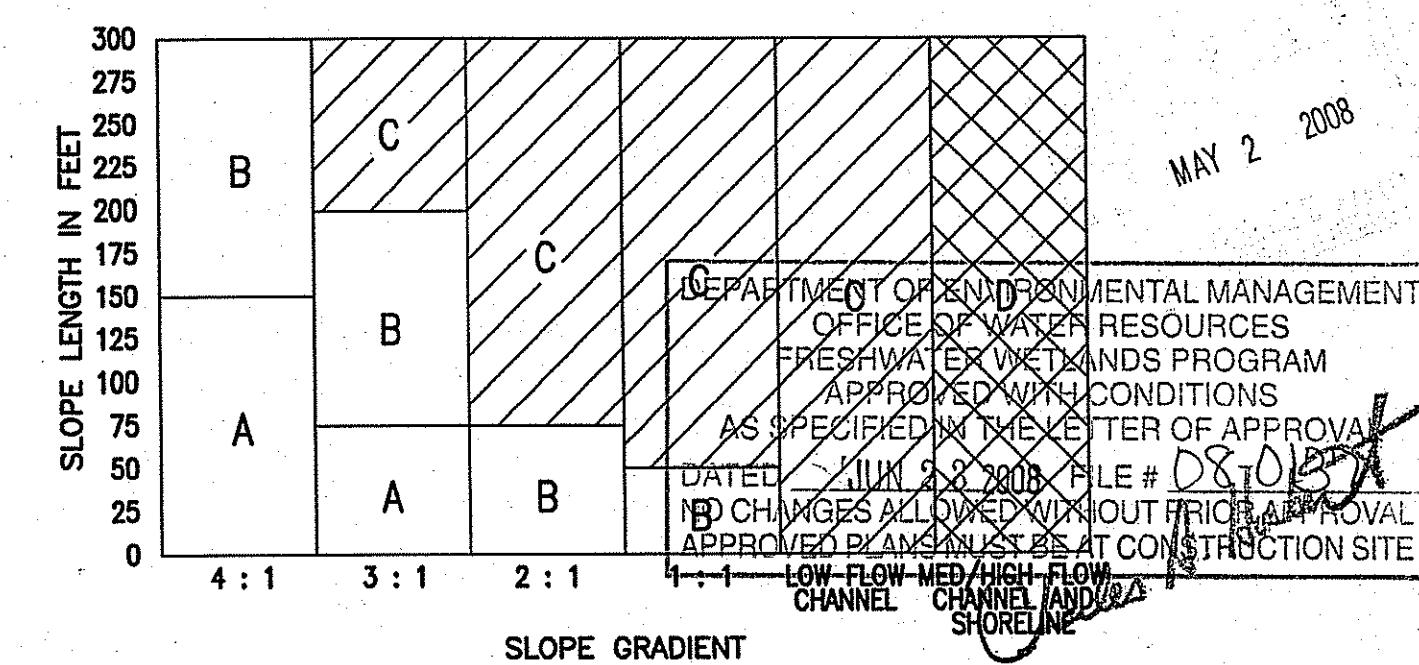


- NOTES:
- HAY BALE CHECK DAMS TO BE USED IN LOCATIONS SHOWN ON PLANS OR AS DIRECTED BY THE ENGINEER AND WILL BE MAINTAINED BY THE CONTRACTOR DURING CONSTRUCTION.
  - NUMBER OF BALES NEEDED WILL VARY TO MEET FIELD CONDITIONS.
  - BALES WILL BE ALLOWED TO ROT IN PLACE.
  - THE HAY SHALL BE TIED TO FORM A BALE WITH WIRE AND NOT ROPE OR TWINE.
  - ALL BALES SHALL BE EMBEDDED IN THE SOIL A MINIMUM OF 4 INCHES WITH EARTH TAMPED ON THE UPSTREAM SIDE TO PREVENT PIPING.

**HAY BALE CHECK DAM**



- NOTES:
- PREPARE SOIL BEFORE INSTALLING BLANKETS, INCLUDING APPLICATION OF SEED.
  - BEGIN AT THE TOP OF THE SLOPE BY ANCHORING THE BLANKET IN A 6" DEEP X 6" WIDE TRENCH. BACKFILL AND COMPACT THE TRENCH AFTER STAPLING.
  - ROLL THE BLANKETS DOWN THE SLOPE IN THE DIRECTION OF THE WATER FLOW.
  - THE EDGES OF PARALLEL BLANKETS SHALL BE STAPLED WITH APPROXIMATELY 2" OVERLAP.
  - WHEN THE BLANKETS MUST BE SPLICED DOWN THE SLOPE, PLACE BLANKET ENDS OVER END (SHINGLE STYLE) WITH APPROXIMATELY 6" OVERLAP. STAPLE THROUGH OVERLAPPED AREA. APPROXIMATELY 12" APART.



|              |          |
|--------------|----------|
| PROJECT NO.: | 18344    |
| DESIGNED BY: | ---      |
| DRAWN BY:    | ---      |
| CHK'D BY:    | ---      |
| DATE:        | 02-20-08 |
| SCALE:       | NONE     |
| SHEET NO.:   | 9        |

|             |      |
|-------------|------|
| BY          | APPD |
| DATE        |      |
| MARK        |      |
| DESCRIPTION |      |

|                 |      |            |                       |
|-----------------|------|------------|-----------------------|
| STEVEN L LANDRY | 4688 | REGISTERED | PROFESSIONAL ENGINEER |
| No.             |      |            |                       |

Maguire Group Inc.  
Architects/Engineers/Planners  
225 Chapman Street, 4th Floor  
Providence, Rhode Island 02905

**MAGUIRE GROUP**

NAVFAC MID-ATLANTIC PWD  
NEWPORT, RHODE ISLAND

Melville Water System Project  
EROSION CONTROL DETAILS