

Wannamoissett Country Club

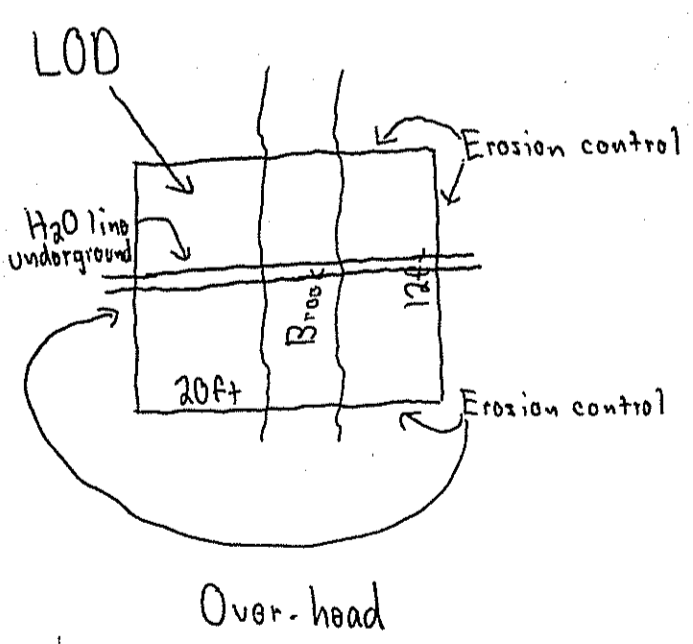
DATE: 05/23/07
 SHEET: 1 of 1
 SHEET TITLE: Irrigation Piping Plan



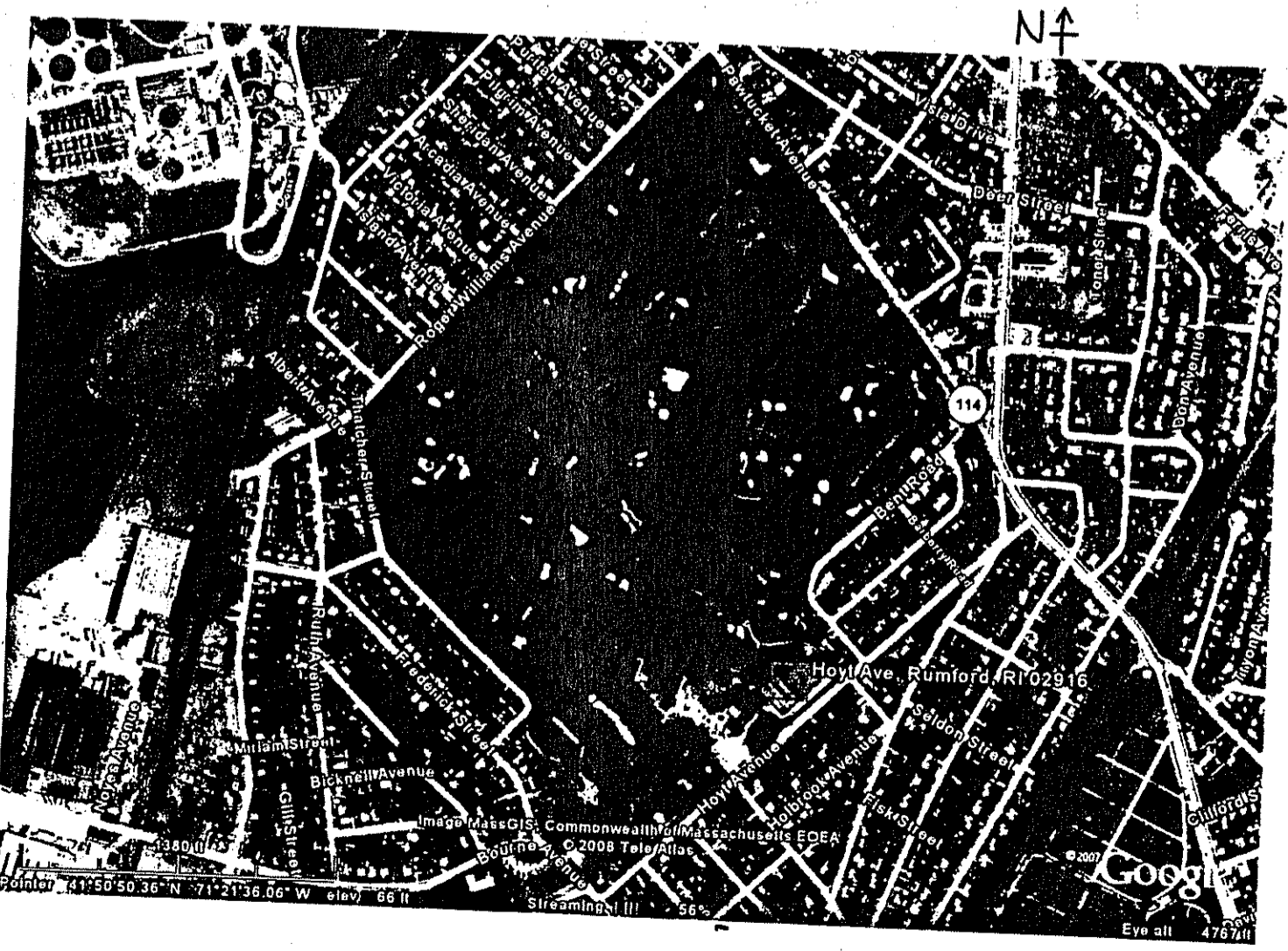
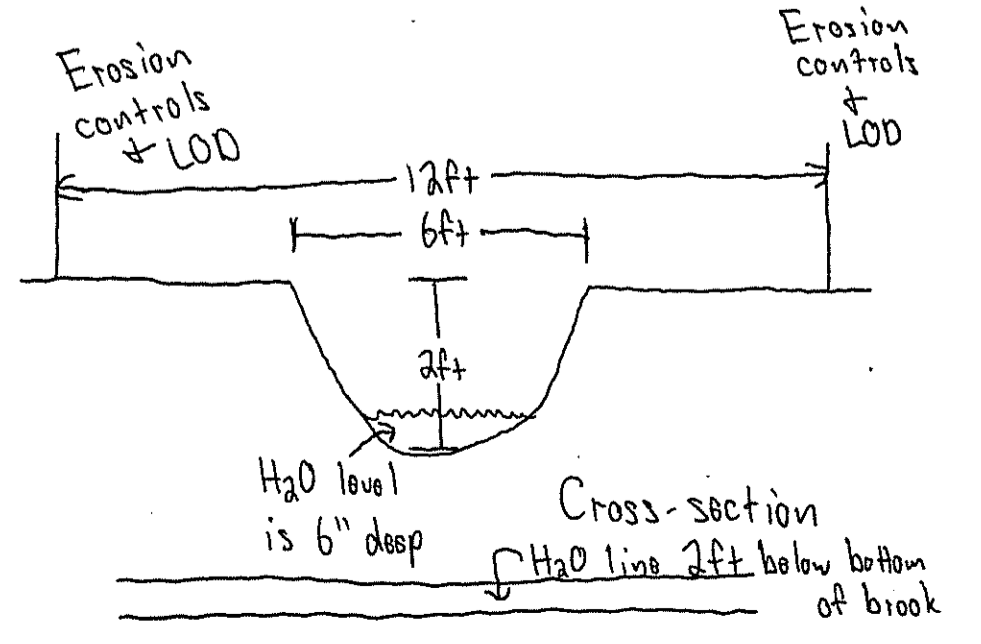
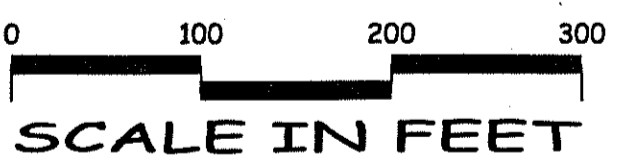
MECHANICAL - LEGEND

Symbol	Item	Type
⊙	854S-46-556 / 900E-52-70	VIH Sprinkler
⊙	885S-46-866 / 950E-22-70	VIH Sprinkler
⊙	854S-46-536 / 900E-44-70	VIH Sprinkler
⊙	885S-46-836 / 950E-18-70	VIH Sprinkler
⊙	724-46-396 / 500E-53-70	VIH Sprinkler
⊙	725-46-396 / 550E-53-70	VIH Sprinkler
⊙	Full Circle	- 75' Spacing
⊙	Part Circle	- 75' Spacing
⊙	Full Circle	- 65' Spacing
⊙	Part Circle	- 65' Spacing
⊙	Full Circle	- 35' Spacing
⊙	Part Circle	- 35' Spacing
⊙	Isolation Valve - Line Sized	
⊙	3" Isolation Valve - Green Feeds	
⊙	2" Fairway Lateral Valve	
⊙	2.5" Fairway Lateral Valve	
⊙	Air Release Valve	
⊙	Satellite Controller - 48 Stations, Hole #15	
---	Limits of Stations Controlled by Satellite	
---	2" Pipe	SDR 21 PVC Pipe - LATERAL
---	2.5" Pipe	SDR 21 PVC Pipe - LATERAL
---	3" Pipe	SDR 21 PVC Pipe - MAIN
---	4" Pipe	SDR 21 PVC Pipe - MAIN
---	6" Pipe	SDR 21 PVC Pipe - MAIN
---	8" Pipe	SDR 21 PVC Pipe - MAIN
---	10" Pipe	SDR 21 PVC Pipe - MAIN
---	16" Pipe	SDR 21 PVC Pipe - MAIN
---	DR 18 C905 PVC Pipe	- MAIN
⊙	Sandbags	

Erosion controls and limits of disturbance CLOD



Wannamoissett Country Club
 96 Hoyt Avenue
 Rumford, RI 02916
 401 434-1200 ext. 10
 Map 402 Parcel 21 Block 20

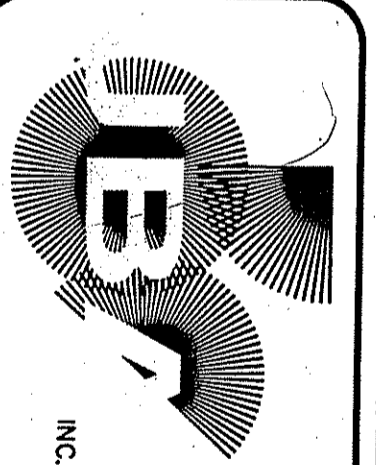


NOTES:
 1) Green feed is 3', Green loop is 2.5'.
 2) 2" Pipe to all single heads.
 3) Install 2" feed, 2" gate valve, control wire and common wire at each bunker for future spray zones. Location to be determined by owner in field.
 4) Leave 2" tap, gate valve, 4 control wires & loop of common wire at future tee, at location specified by this symbol. (⊙)

Location: 1 on Hole #1
 1 on Hole #6
 1 on Hole #11
 2 on Hole #12
 2 on Hole #14
 1 on Hole #17

DEPARTMENT OF ENVIRONMENTAL AFFAIRS
 OFFICE OF WATER RESOURCES
 FRESHWATER WETLANDS PERMIT
 APPROVED WITH CONDITIONS
 AS SPECIFIED IN THE LETTER OF APPROVAL
 DATED OCT 3 2008 FILE # 2008-0001
 NO CHANGES ALLOWED WITHOUT PERMISSION
 APPROVED PLANS MUST BE AT CONSISTENT WITH THE PERMIT

PROFESSIONAL MEMBER
 AMERICAN SOCIETY OF IRRIGATION CONSULTANTS
 James M. Barrett



JAMES BARRETT ASSOCIATES, INC.
 GOLF COURSE IRRIGATION DESIGN AND CONSULTING
 P. O. Box 155, Roseland, New Jersey 07068
 (973) 364-9701 Fax: (973) 364-9702



W. Joseph