

LOCATION MAP

SCALE: 1"=1000'

EROSION CONTROL NOTES:

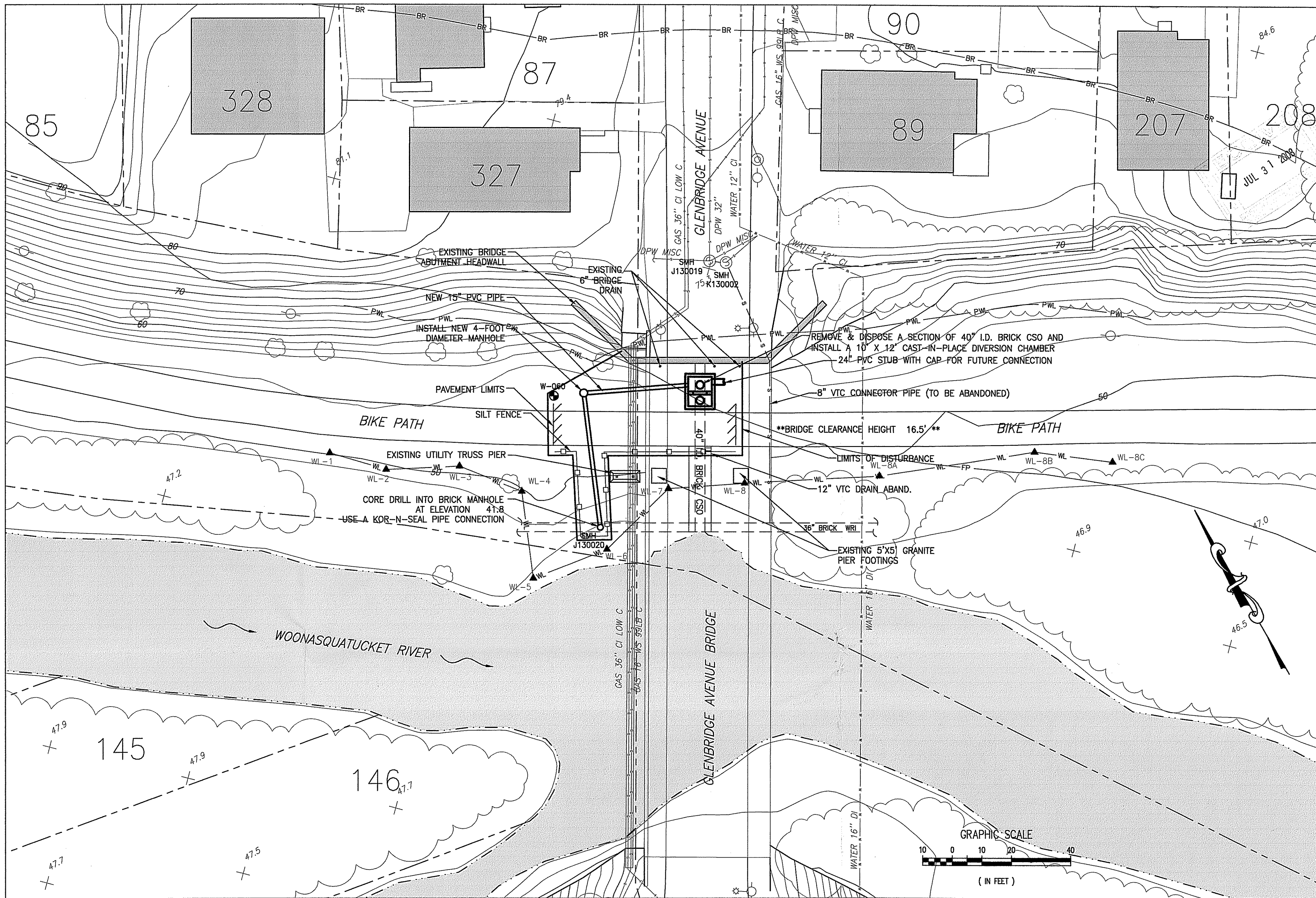
1. PRIOR TO BEGINNING CONSTRUCTION, THE CONTRACTOR SHALL SUBMIT FOR ACCEPTANCE A GENERAL WORK SCHEDULE AND PLAN WHICH INDICATES PLANNED IMPLEMENTATION OF TEMPORARY AND PERMANENT SOIL EROSION AND SEDIMENTATION CONTROL MEASURES, INCLUDING SHUTDOWN PROCEDURES FOR WINTER AND OTHER WORK INTERRUPTIONS.
2. SEDIMENTATION AND EROSION CONTROL DEVICES SHALL BE INSTALLED AND MAINTAINED THROUGHOUT THE DURATION OF CONSTRUCTION. SEDIMENTATION DEVICES SHALL BE FURNISHED, INSTALLED AND MAINTAINED AS SHOWN ON THE PLANS AND/OR AS DIRECTED BY THE ENGINEER. THE CONTRACTOR SHALL PREVENT THE DISCHARGE AND MIGRATION OF SEDIMENT FROM THE SITE.
3. THE LIMIT OF WORK AREA MUST BE STRICTLY ADHERED TO IN ALL AREAS. THE CONTRACTOR WILL BE RESPONSIBLE FOR RESTORING AREAS WHICH ARE OUTSIDE OF THE PROJECT AREAS OF DISTURBANCE WHICH ARE IMPACTED BY CONSTRUCTION OPERATIONS AT HIS OWN EXPENSE. SUCH AREAS INCLUDE THOSE WHERE VEHICLES, EQUIPMENT, AND MATERIALS ARE STORED WITH THE PERMISSION OF THE ENGINEER/OWNER.
4. ALL DISTURBED SLOPES EITHER NEWLY CREATED OR EXPOSED PRIOR TO OCTOBER 15TH SHALL BE SEEDED OR PROTECTED BY THAT DATE FOR ANY WORK COMPLETED DURING EACH CONSTRUCTION YEAR WITH SOIL STABILIZATION BLANKET.
5. TEMPORARY TREATMENT OF EXPOSED SURFACES SHALL CONSIST OF HAY, STRAW, FIBER MULCH OR PROTECTIVE COVERS SUCH AS A MAT OR FIBER LINING (BURLAP, JUTE MESH, FIBERGLASS NETTING, EXCELSIOR MATTING). THESE TREATMENTS SHALL BE INCORPORATED INTO THE WORK AS WARRANTED OR AS ORDERED BY THE ENGINEER.
6. HAY OR STRAW APPLICATIONS SHALL BE IN THE AMOUNT OF 3,000-4,000 LBS./ACRE.
7. ALL HAY BALES, SILT FENCE OR TEMPORARY PROTECTION SHALL REMAIN IN PLACE UNTIL AN ACCEPTABLE STAND (90%) OF GRASS OR APPROVED GROUND COVER IS ESTABLISHED. IF NEEDED, TEMPORARY SEEDING MAY BE USED TO MINIMIZE EROSION.
8. THE CONTRACTOR MUST REPAIR AND/OR RESEED ANY AREA THAT DOES NOT DEVELOP WITHIN THE PERIOD OF ONE YEAR.
9. SEDIMENTATION CONTROL DEVICES SHALL BE INSPECTED WEEKLY AND MAINTAINED PROMPTLY BY THE CONTRACTOR.
10. EROSION CONTROL INSPECTIONS SHALL OCCUR WITHIN 24 HOURS OF RAINFALL EVENTS TOTALING 0.25 INCHES OR MORE WITHIN A 24-HOUR PERIOD.

GENERAL NOTES:

1. THE BASE PLAN FOR THIS PROJECT WAS DEVELOPED UTILIZING INFORMATION PROVIDED BY CHAS SELLS DATED MARCH 2008 (SEE SURVEY NOTES).
2. ALL AREAS DISTURBED BY THE CONTRACTOR OUTSIDE THE LIMITS OF DISTURBANCE SHALL BE RESTORED TO THE ORIGINAL CONDITION AT NO ADDITIONAL COST TO THE OWNER. ALL ORIGINAL GRADES SHALL BE RESTORED.
3. THE CONTRACTOR SHALL BE RESPONSIBLE FOR HEALTH AND SAFETY OF ALL ITS EMPLOYEES, SUBCONTRACTORS, VENDORS, AND VISITORS WORKING ON THE PROJECT.
4. THE CONTRACTOR SHALL PERFORM ALL CONSTRUCTION ACTIVITIES WITHIN THE LIMIT OF WORK AREAS INDICATED ON THE PLANS. THE LIMITS OF DISTURBANCE AS SHOWN ON THE PLANS SHALL BE STRICTLY ADHERED.
5. IT IS THE CONTRACTOR'S RESPONSIBILITY TO ENSURE THAT THE EXISTING CONDITIONS ARE NOT OBLITERATED BEFORE CONTROL POINTS ARE LOCATED AND CONSTRUCTION LAYOUT IS ESTABLISHED. THE CONSTRUCTION LAYOUT SHALL BE PROVIDED IN SUFFICIENT DETAIL THEREBY ENABLING THE CONTRACTOR TO CONSTRUCT THE PROJECT IN CONFORMITY WITH THE PLANS AND SPECIFICATIONS. SURVEY WILL BE PROVIDED BY THE CONTRACTOR. THE ENGINEER WILL NOT AUTHORIZE CONSTRUCTION ACTIVITIES TO BEGIN UNTIL THE CONTRACTOR SATISFIES THAT ALL GROUND CONTROL HAS BEEN ESTABLISHED, TIED DOWN, AND DULY RECORDED IN STANDARD FIELD BOOKS.
6. THE CONTRACTOR SHALL SAWCUT AT ALL MATCH POINTS, EXISTING TO FINISHED SURFACES (EG. SIDEWALK, PAVEMENT, CURBS, ETC).

UTILITY NOTES:

1. THE CONTRACTOR SHALL BE RESPONSIBLE FOR COORDINATION AND DESIGN AS NECESSARY OF ALL PERMANENT AND TEMPORARY UTILITY RELOCATIONS, BOTH UNDER GROUND AND OVERHEAD.
2. THE UTILITIES ARE SHOWN AT APPROXIMATE LOCATIONS. CONTRACTOR TO FIELD VERIFY EXACT LOCATION.
3. THE CONTRACTOR SHALL NOTIFY DIG-SAFE AND THE ENGINEER A MINIMUM OF 72 HOURS PRIOR TO COMMENCING WORK.
4. THE CONTRACTOR SHALL BE RESPONSIBLE FOR COORDINATING AND PROVIDING TEMPORARY ELECTRIC, WATER SERVICES, AND SANITARY FACILITIES AS REQUIRED.
5. ALL INVERTS INDICATED ON PLANS ARE TAKEN FROM THE MANHOLE CENTERLINE. ALL MANHOLES SHALL MAINTAIN A 0.10 FOOT DROP ACROSS EACH STRUCTURE.



SITE PLAN

SCALE: 1"=20'

SURVEY NOTES:

1. THE TOPOGRAPHY DEPICTED ON THE PLANS WAS DEVELOPED FROM MARCH 2008 SURVEY CONDUCTED BY CHAS H SELLS, CHARLTON, MA.
2. THE SURVEY IS BASED ON THE RHODE ISLAND STATE PLANE COORDINATE SYSTEM NAD 1983 HORIZONTAL DATUM AND THE NGVD 1929 VERTICAL DATUM (MSL).
3. ALL SURVEY FIELD WORK AND COMPUTATIONS WERE PERFORMED IN CONFORMANCE WITH "PROCEDURAL AND TECHNICAL STANDARDS FOR THE PRACTICE OF LAND SURVEYING IN THE STATE OF RHODE ISLAND AND PROVIDENCE PLANTATIONS" PREPARED BY THE RHODE ISLAND SOCIETY OF PROFESSIONAL LAND SURVEYORS (AS AMENDED), NATIONAL MAPPING ACCURACY STANDARD, AND THE FEDERAL GEOGRAPHIC DATA COMMITTEE (FGDC) STANDARDS. MAPPING WAS DEVELOPED TO MEET A DELIVERED SCALE OF 1" = 40', WITH MINIMUM POSITIONAL ACCURACIES OF ±0.82' HORIZONTAL AND ±0.33' VERTICAL AT A 95% LEVEL OF CONFIDENCE. THE CONTROL NETWORK SHALL HAVE A MINIMUM ACCURACY OF 1:50,000 HORIZONTAL AND 0.035 x (DISTANCE IN MILES)²/2 FEET VERTICAL.

SCOPE OF WORK:

1. THE PURPOSE OF THE PROJECT IS TO CONSTRUCT A NEW DIVERSION STRUCTURE AND DRY WEATHER CONNECTION ON AN ACTIVE COMBINED SEWER OVERFLOW (CSO), DESIGNATED AS OF-055, WHICH IS DISCHARGES TO THE WOONASQUATUCKET RIVER IN PROVIDENCE, RI.
2. THE PROJECT INVOLVES THE REPLACEMENT OF AN EXISTING 8-INCH VITRIFIED CLAY PIPE (VCP) DRY WEATHER CONNECTION PIPE WITH A REALIGNED 15-INCH PVC PIPE. THE EXISTING 8-INCH LINE HAS REQUIRED INCREASED MAINTENANCE IN RECENT YEARS TO PREVENT DRY WEATHER OVERFLOWS. A NEW CAST-IN-PLACE DIVERSION STRUCTURE WILL BE CONSTRUCTED AROUND THE EXISTING OUTFALL PIPE. A NEW 15-INCH DRY WEATHER LINE WILL CONNECT TO THE EXISTING INTERCEPTOR AT AN EXISTING SANITARY MANHOLE.
3. THE PROJECT LOCATION IS DIRECTLY UNDERNEATH THE GLENBRIDGE AVENUE BRIDGE CROSSING WITHIN THE ROUTE 6 RIGHT-OF-WAY (ROW). THE NARRAGANSETT BAY COMMISSION (NBC) HAS AN EXISTING SEWER EASEMENT FOR THE STRUCTURE. NBC HAS OBTAINED AN EXPANDED CONSTRUCTION EASEMENT FROM THE RHODE ISLAND DEPARTMENT OF TRANSPORTATION (RDOT) TO CONSTRUCT THE PROPOSED IMPROVEMENTS. THE TOTAL AREA OF THE PERMANENT EASEMENT FOR THE NEW FACILITY WILL BE 1,294 SQUARE FEET (SF), WITH A 2,346 SF TEMPORARY CONSTRUCTION EASEMENT. THEREFORE, THE ENTIRE PROJECT WILL ENCOMPASS 3,642 SF.
4. THE SLOPED, VEGETATED AREAS DISTURBED DURING CONSTRUCTION WILL BE RESTORED AND REVEGETATED FOLLOWING CONSTRUCTION.
5. ALL TEMPORARY EROSION CONTROLS SHALL BE REMOVED FROM THE PROJECT FOLLOWING FINAL STABILIZATION.

DEPARTMENT OF ENVIRONMENTAL MANAGEMENT
OFFICE OF WATER RESOURCES
FRESHWATER WETLANDS PROGRAM

LEGEND APPROVED WITH CONDITIONS

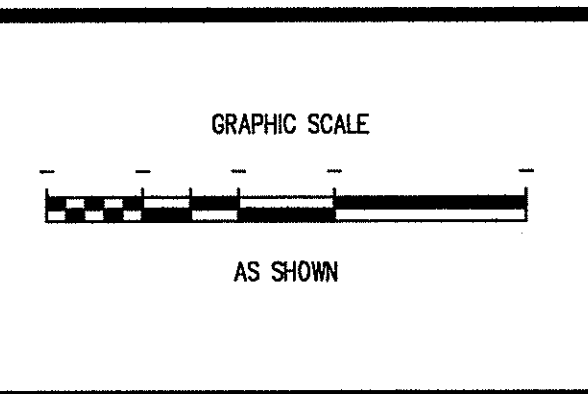
- WETLAND SWAMP
- FLOODPLAIN (FEMA)
- PERIMETER WETLAND
- RIVERBANK WETLAND
- - - EDGE OF RIVER
- WL-4 WETLAND FLAG - DELINEATED EDGE (LEG, APRIL 5, 2008)
- SILT FENCE
- OBSERVATION WELL
- VEGETATION
- PROPERTY LINE
- UTILITY POLE

APPROVED IN THE LETTER OF APPROVAL
SEP 26 2008 FILE # 08-0243

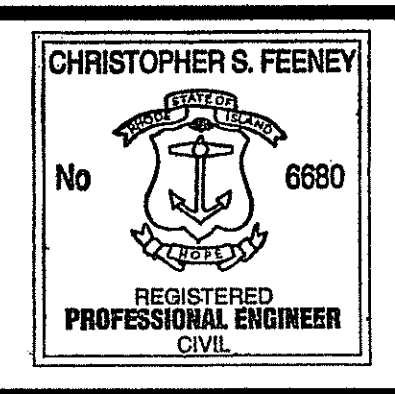
ALLOWED WITHOUT PRIOR APPROVAL
APPROVED PLANS MUST BE APPROVED AT THE LOCATION SITE

JUL 31 2008

NUMBER	DATE	MADE BY	CHECKED BY	REVISIONS DESCRIPTION



DRAWN BY:
AG/GD
DEPT CHECK:
CF
PROJECT CHECK:
GH

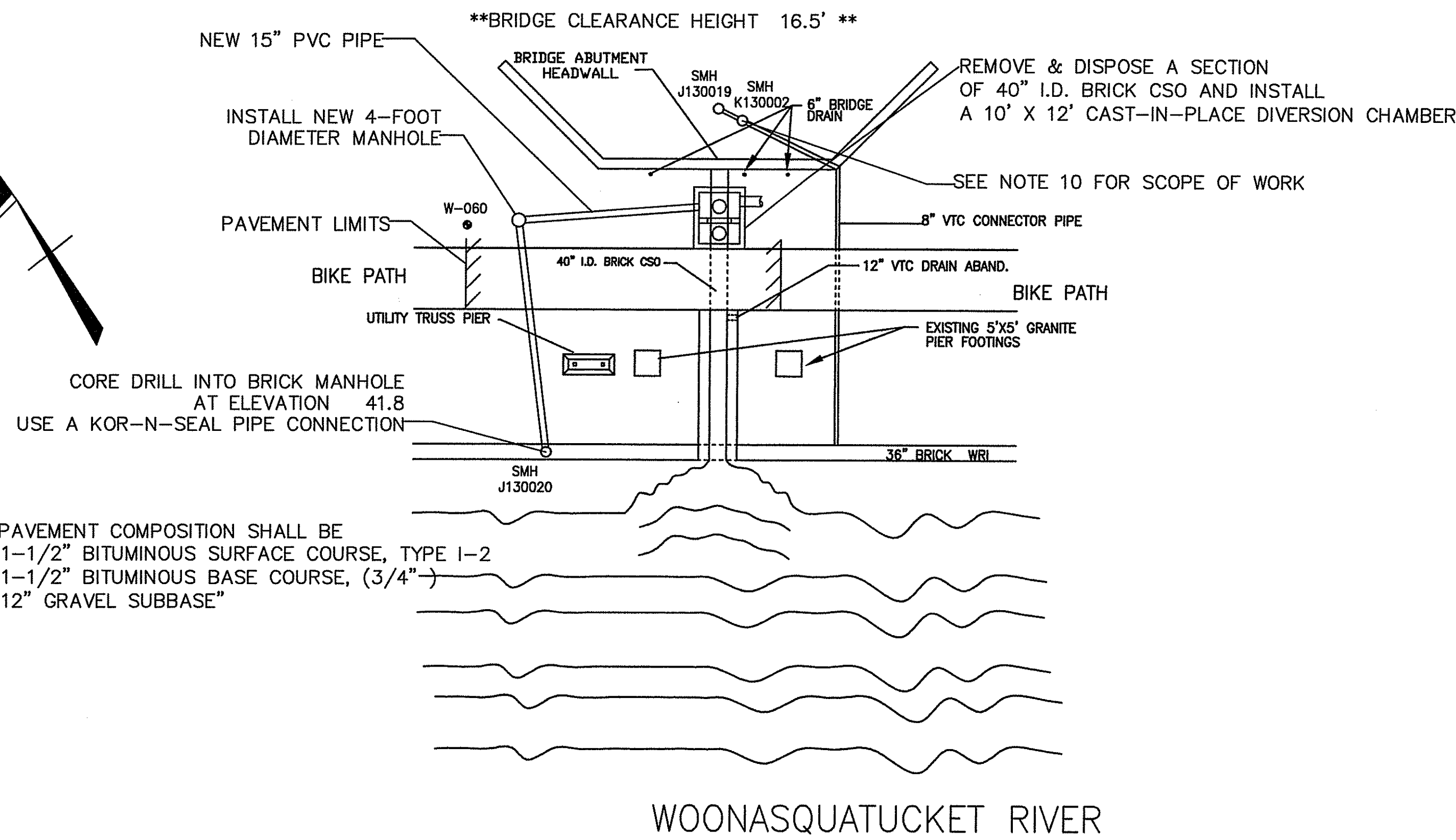
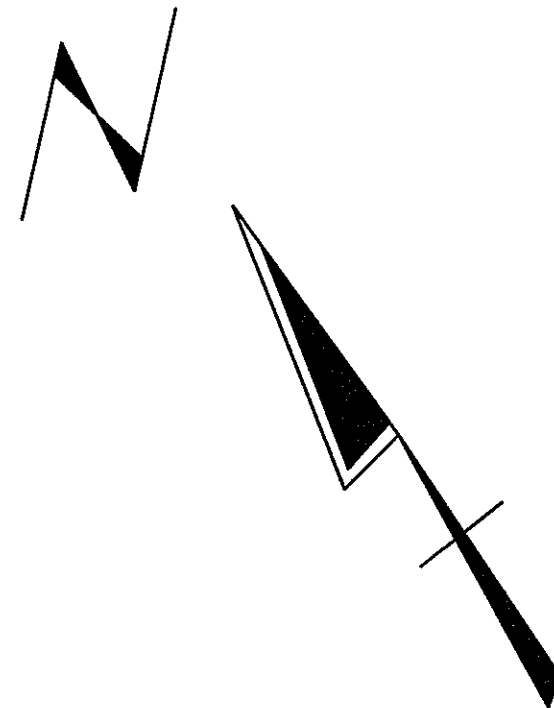


REGISTERED PROFESSIONAL ENGINEER
DATE 7/31/08

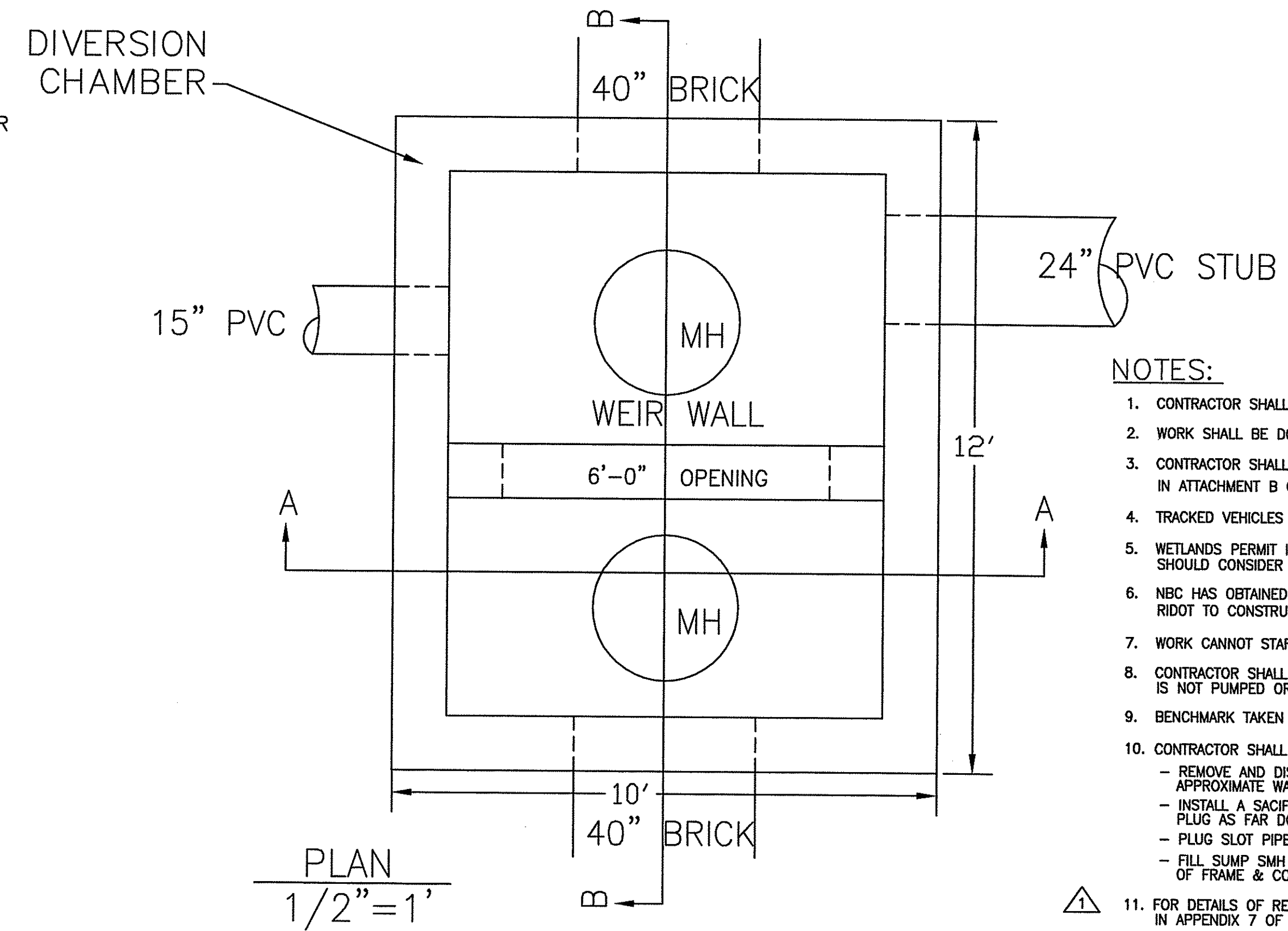
THE NARRAGANSETT BAY COMMISSION
COMBINED SEWER OVERFLOW CONTROL FACILITIES PROGRAM
The LOUIS BERGER GROUP, Inc.
PROGRAM MANAGER

CONTRACT No. —
FILENAME: —
GLENBRIDGE AVENUE REGULATOR
OUTFALL OF-055
SHEET No. 1 of 2

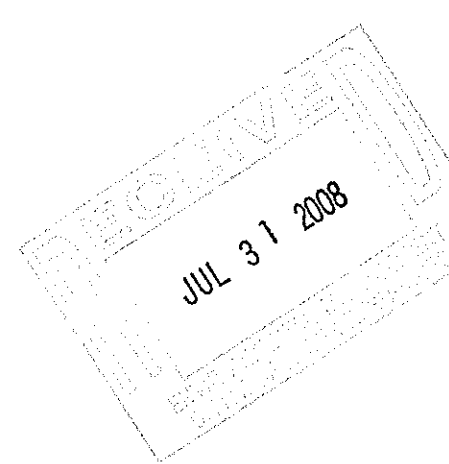
GLENBRIDGE AVENUE BRIDGE



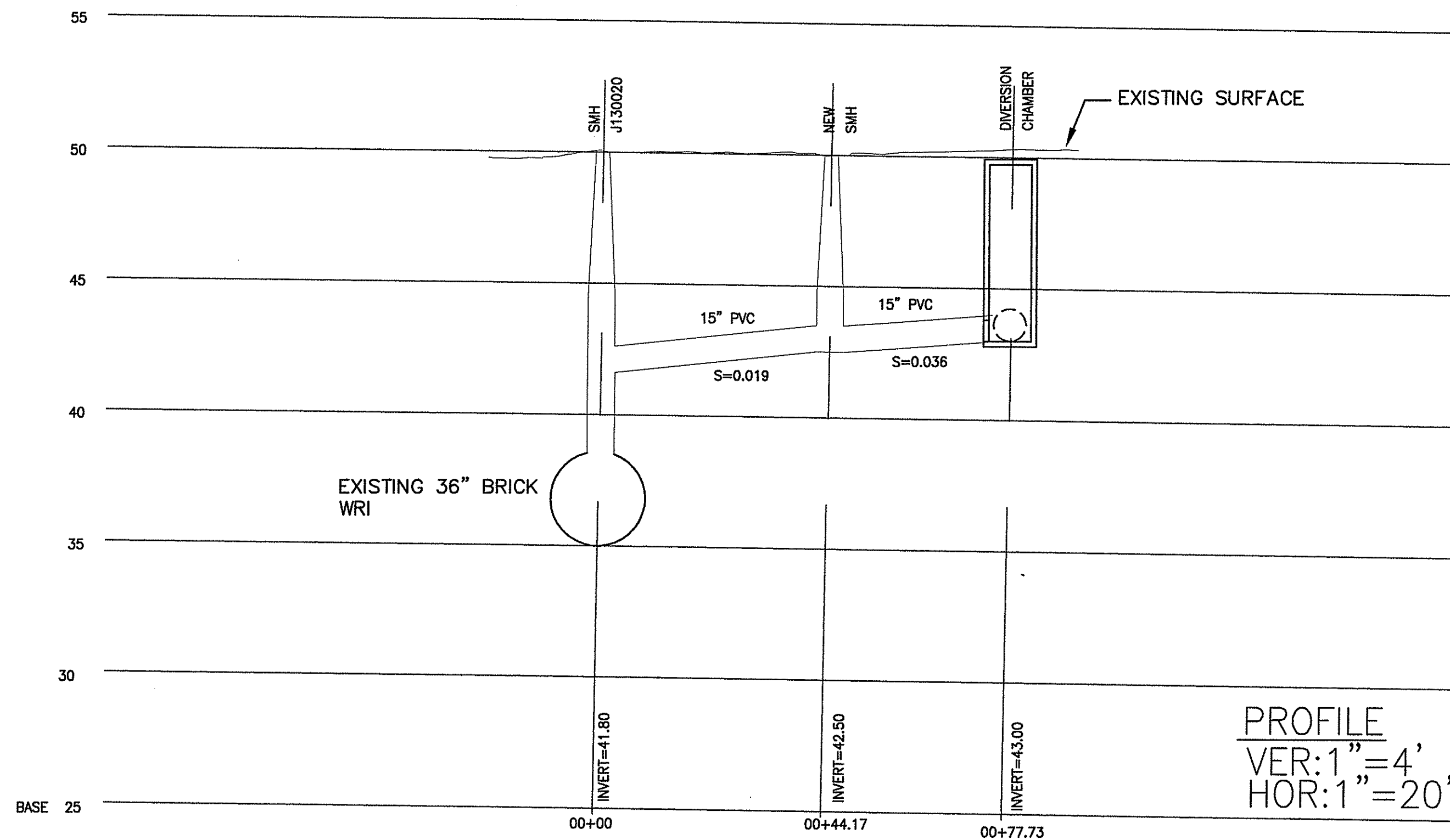
- NOTE:
- THE PAVEMENT COMPOSITION SHALL BE
 - 1-1/2" BITUMINOUS SURFACE COURSE, TYPE 1-2
 - 1-1/2" BITUMINOUS BASE COURSE, (3/4")
 - 12" GRAVEL SUBBASE"



- NOTES:
- CONTRACTOR SHALL VERIFY ALL ELEVATIONS PRIOR TO CONSTRUCTION.
 - WORK SHALL BE DONE DURING DRY WEATHER FLOW.
 - CONTRACTOR SHALL REFER TO GEOTECHNICAL LOCATION MAPS LOCATED IN ATTACHMENT B OF THE SPECIFICATIONS.
 - TRACKED VEHICLES WILL NOT BE PERMITTED ON THE BIKE PATH.
 - WETLANDS PERMIT IS IN THE PROCESS OF BEING OBTAINED. CONTRACTOR SHOULD CONSIDER EROSION CONTROL ALONG THE RIVER IN HIS BID.
 - NEC HAS OBTAINED AN EXPANDED CONSTRUCTION EASEMENT FROM RIDOT TO CONSTRUCT THE PROPOSED IMPROVEMENTS.
 - WORK CANNOT START UNTIL OCTOBER 1, 2008.
 - CONTRACTOR SHALL ENSURE THAT STANDING WATER IN THE STRUCTURE IS NOT PUMPED OR DIRECTED TO THE RIVER.
 - BENCHMARK TAKEN FROM BORING CAP ELEVATION 50.80.
 - CONTRACTOR SHALL DO THE FOLLOWING:
 - REMOVE AND DISPOSE OF BRICK WEIR WALL IN SMH J130019. APPROXIMATE WALL DIMENSIONS ARE: 32" LONG, 9" HIGH, 8" WIDE.
 - INSTALL A SACIFICIAL PLUG INTO THE 8" CONNECTOR PIPE AND PUSH PLUG AS FAR DOWN PIPE AS POSSIBLE AND FILL WITH CONCRETE.
 - PLUG SLOT PIPE TO SUMP SMH K130002 WITH CONCRETE.
 - FILL SUMP SMH K130002 WITH FLOWABLE FILL, REMOVE AND DISPOSE OF FRAME & COVER AND MATCH EXISTING SURFACE.
 - FOR DETAILS OF REINFORCING STEEL SEE SKETCH SK-2 INCLUDED IN APPENDIX 7 OF ADDENDUM #1.

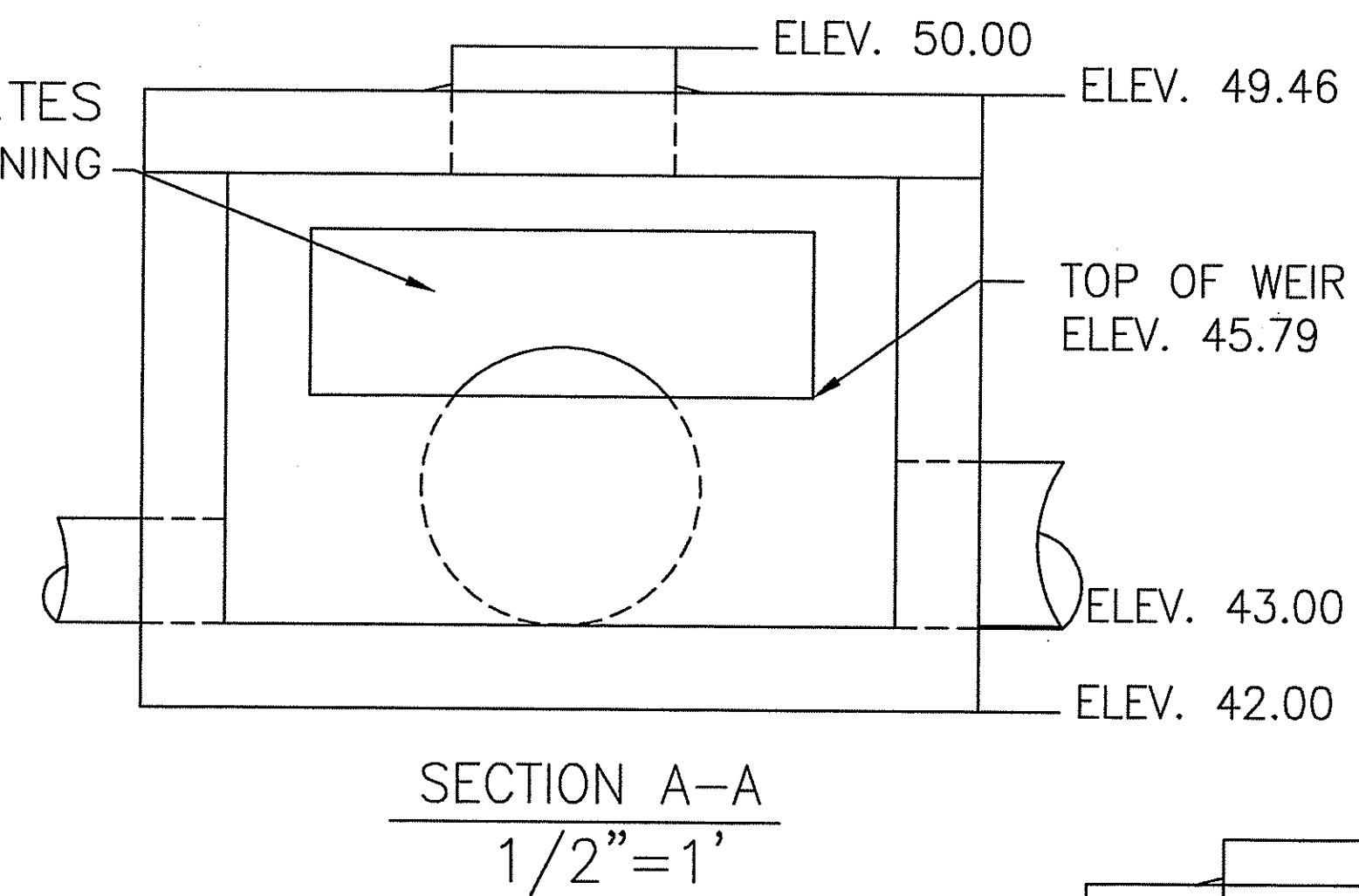


PLAN
1"=20'



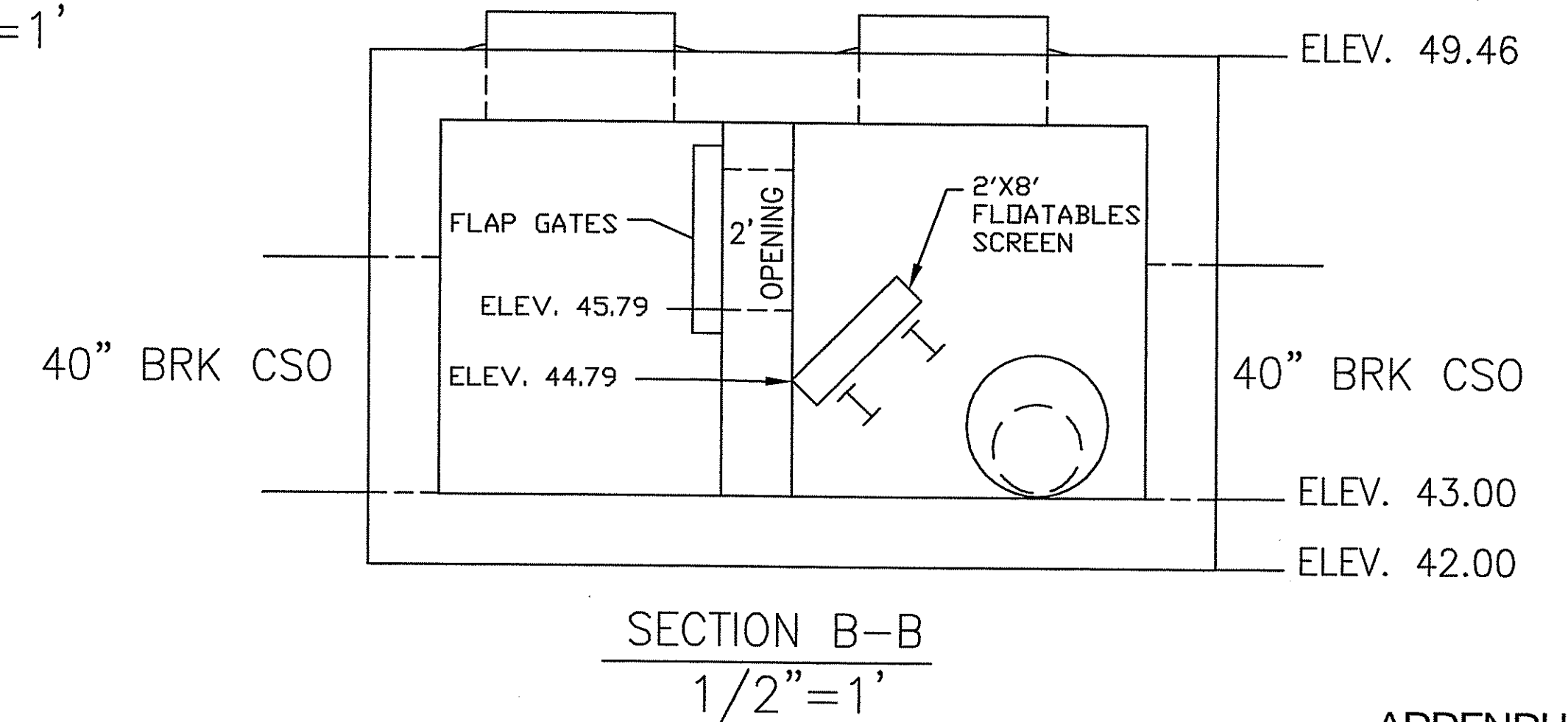
PROFILE
VER: 1"=4'
HOR: 1"=20'

2 FLAP GATES
FOR 6' x 2' OPENING



SECTION A-A
1/2"=1'

DEPARTMENT OF ENVIRONMENTAL MANAGEMENT
OFFICE OF WATER RESOURCES
FRESHWATER WETLANDS PROGRAM
APPROVED WITH CONDITIONS
AS SPECIFIED IN THE LETTER OF APPROVAL
DATED SEP 26 2008 FILE # 08-0243
NO CHANGES ALLOWED WITHOUT PRIOR APPROVAL
APPROVED PLANS MUST BE AT CONSTRUCTION SITE

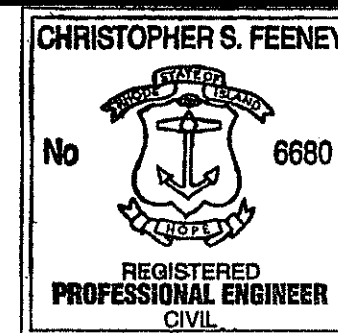


SECTION B-B
1/2"=1'

ADDENDUM NO.3

NUMBER	DATE	MADE BY	CHECKED BY	REVISIONS DESCRIPTION
-	-	-	-	-
-	-	-	-	-
-	-	-	-	-
-	-	-	-	-

DRAWN BY:
AG/GD
DEPT CHECK:
CF
PROJECT CHECK:
GH



REGISTERED PROFESSIONAL ENGINEER
DATE 7/31/08



THE NARRAGANSETT BAY COMMISSION
COMBINED SEWER OVERFLOW
CONTROL FACILITIES PROGRAM
The LOUIS BERGER GROUP, Inc.
PROGRAM MANAGER

CONTRACT No. _____
FILENAME: _____
GLENBRIDGE AVENUE REGULATOR
OUTFALL OF-055
JUL 31 2008
SHEET No. 2 of 2