

# Site Plans

Issued for: RIDEM PDA

Date Issued: August 20, 2008

Latest Issue: August 20, 2008

## Index

No.	Drawing Title	Latest Issue
C-1	Legend and General Notes	8/20/2008
C-2	Overall Site Plan	8/20/2008
C-3	Site Plan and Details	8/20/2008

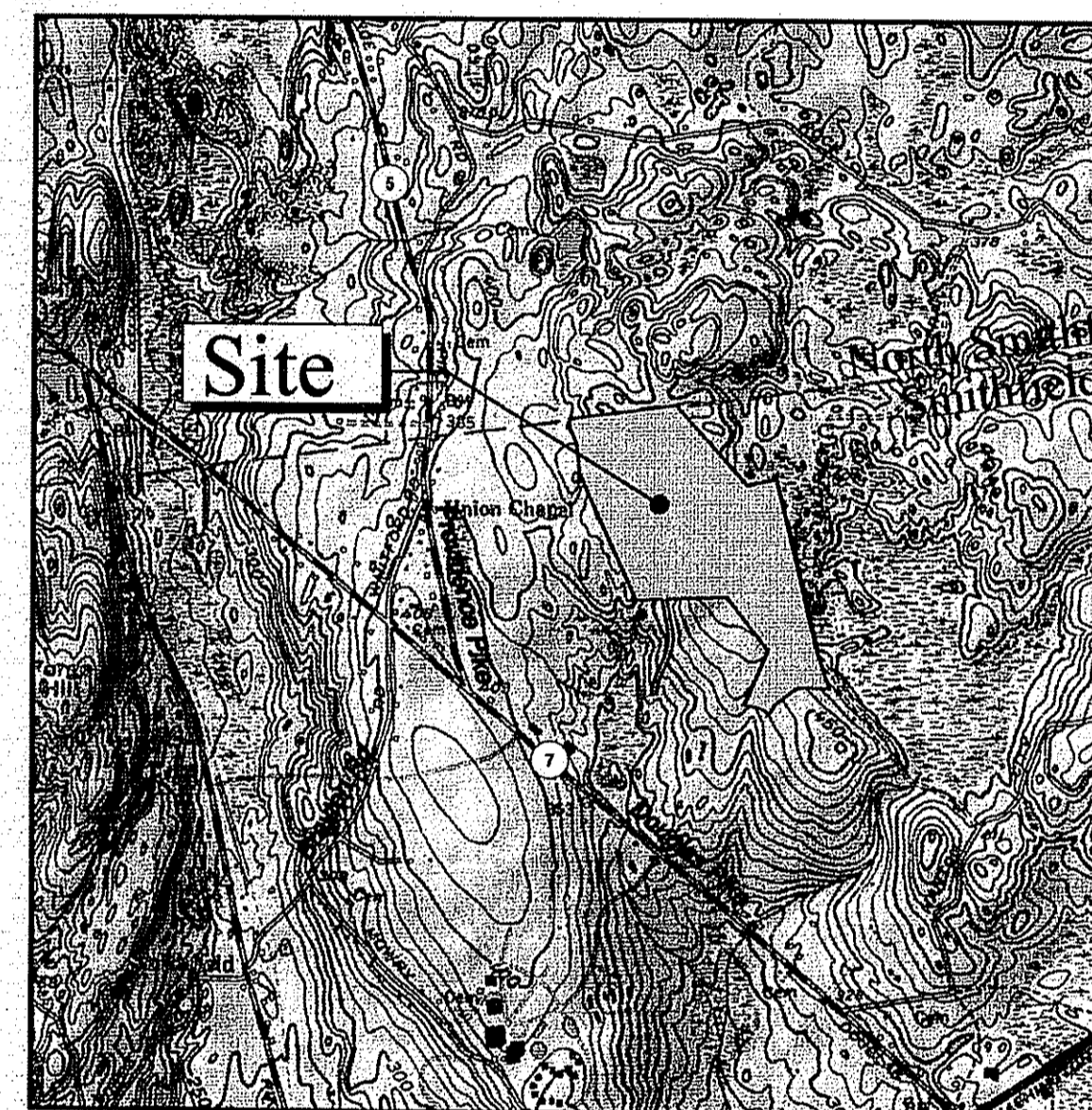
## Reference Drawings

AS-1 Thru	Administrative Subdivision Plan of Land in Smithfield, 7/18/06
AS-7	Rhode Island A.P. 49 Lots 49, 85, 159, and 224



# Fidelity Smithfield Campus Proposed Drainage Swale

Salem Street (Off Route 7)  
Smithfield, Rhode Island



Site Location Map

## Property Information

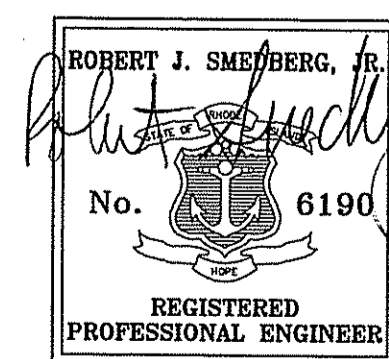
Owner/Applicant:  
**Rhode Island Economic Development Corporation**  
One West Exchange Street  
Providence, Rhode Island 02903  
Phone: 401-222-6601

Prepared for:  
**FMR Rhode Island Inc.**  
100 Salem Street  
Smithfield, Rhode Island 02917  
Phone: 401-292-6090

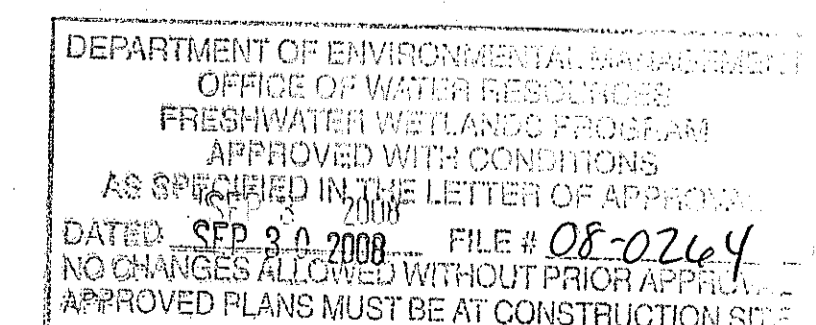
Assessor's Plat: 49  
Lot: 159



**Vanasse Hangen Brustlin, Inc.**  
Transportation  
Land Development  
Environmental Services  
10 Dorrance Street, Suite 400  
Providence, Rhode Island 02903  
401 272 8100 · 401 273 9694



8/20/08



Nancy L. Freeman

VHB Project No. 71809.00  
Salem Street, Smithfield, RI  
Issued for: RIDEM PDA - 8/20/08







Vanasse Hangen Brustlin, Inc.

Transportation  
Land Development  
Environmental Services

10 Dorrance Street, Suite 400  
Providence, Rhode Island 02903  
401.272.8100 • FAX 401.273.9694



Assessor's Plat 49  
Lot: 159

No.	Revision	Date	Appr.

Designed by	Drawn by	Checked by
Scale 1"=10'	Date August 20, 2008	

**Fidelity Smithfield Campus  
Proposed Drainage Swale**

Salem Street (Off Route 7)  
Smithfield, Rhode Island

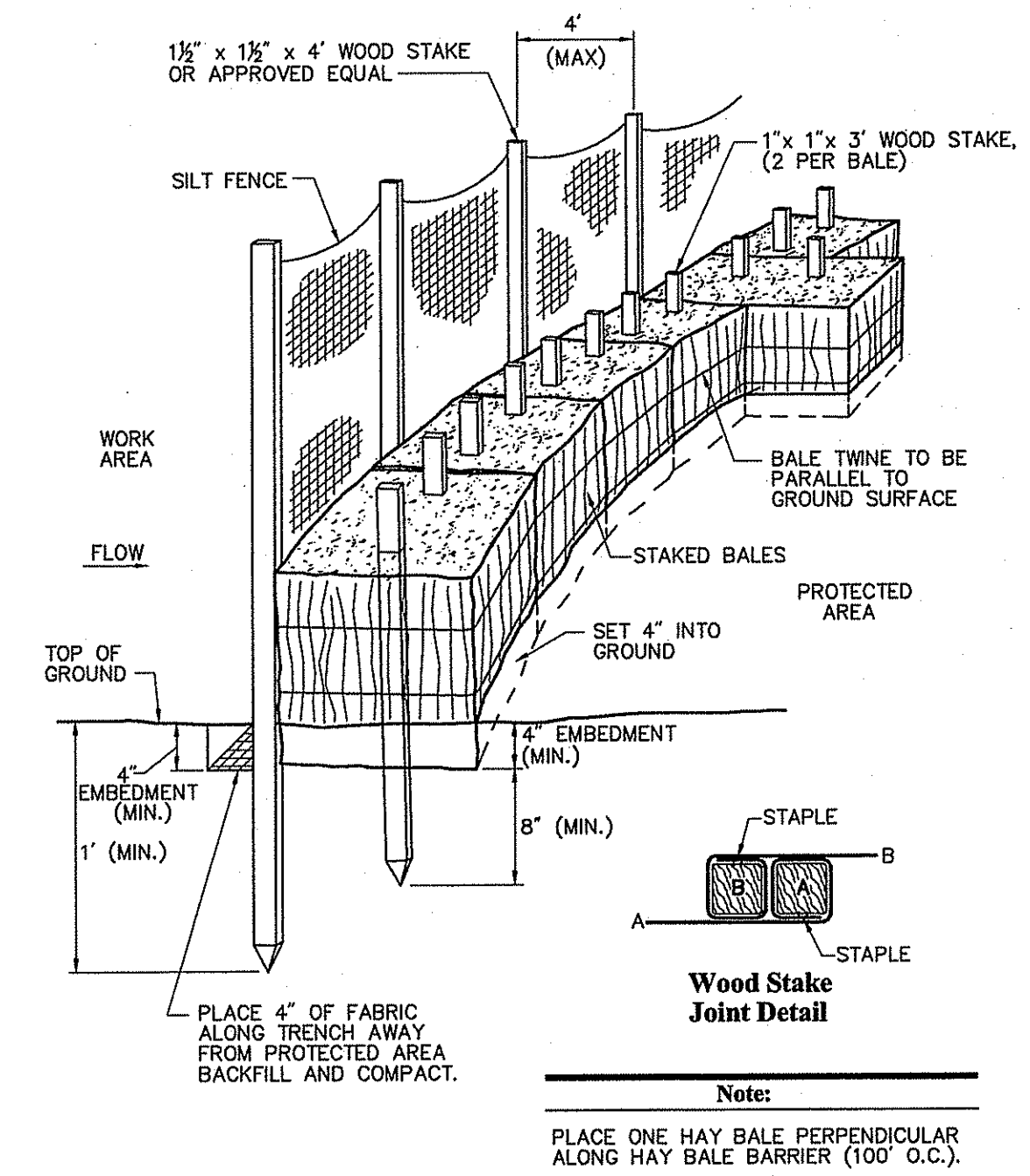
RIDEM PDA AUG 25 2008

**Site Plan & Details**

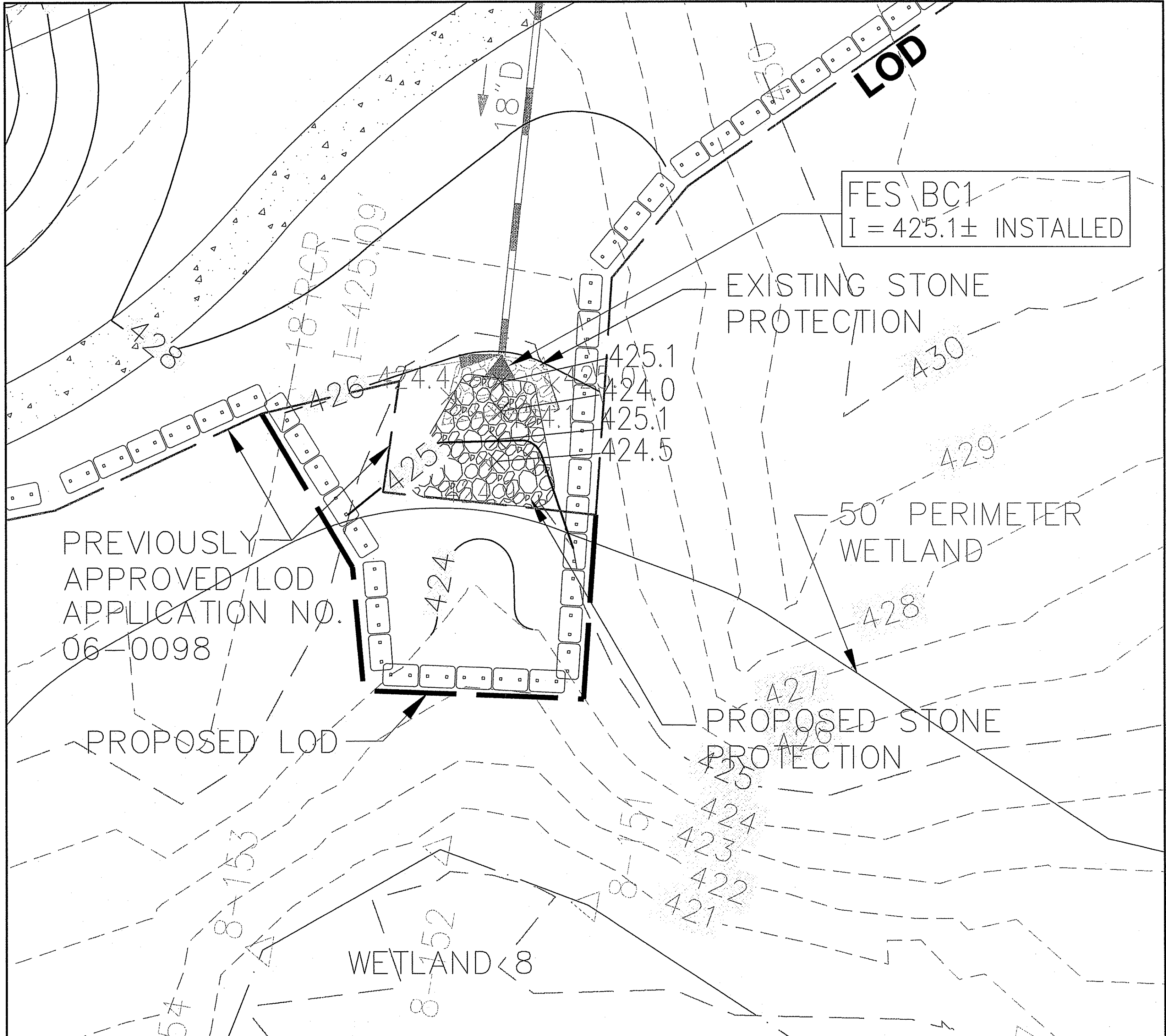
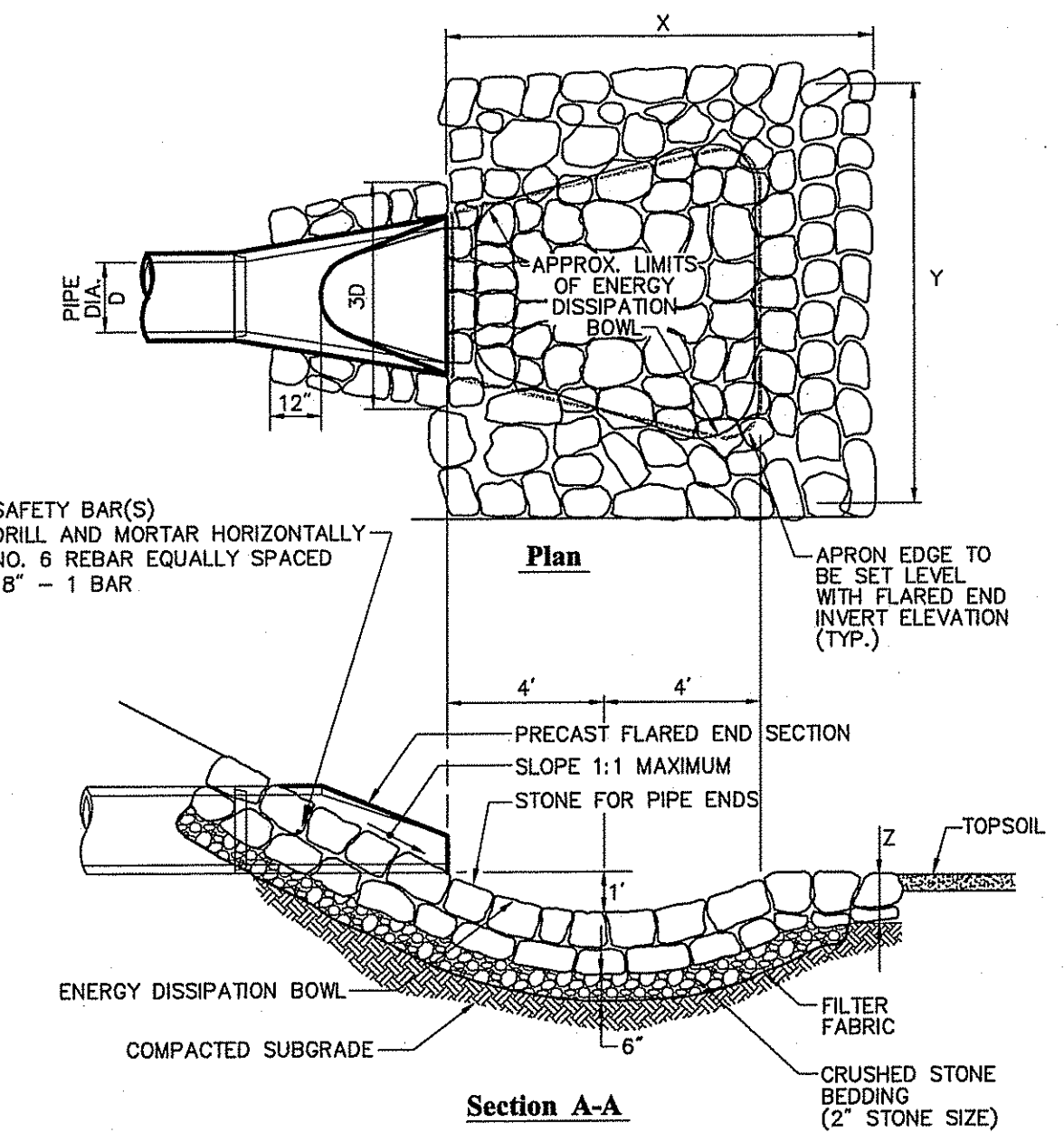
Robert J. Smedberg, Jr.  
No. 6190  
REGISTERED PROFESSIONAL ENGINEER  
8/20/08

Project Number 71809.00

Sheet 4 of 4



FES NO.	X	Y	Z	STONE DIA. (D <sub>50</sub> )
BC1	18"	22"	2.0'	12"



**Construction Methods Within Perimeter Wetlands**

1. INSTALL PERIMETER SEDIMENT CONTROL AS DEPICTED ON THE PLAN.
2. CAREFULLY REMOVE AND STOCKPILE UPPER SIX-INCHES OF TOP SOIL WITH VEGETATION.
3. EXCAVATE SUBSOIL AND SUBGRADE WITHIN WORK AREA SIX-INCHES BELOW FINAL GRADE.
4. RESET STRIPPED TOPSOIL PRESERVING AS MUCH VEGETATION AS POSSIBLE.
5. IRRIGATE SITE WHENEVER WEEKLY RAINFALL IS LESS THEN AN INCH.
6. REMOVE PERIMETER SEDIMENT CONTROLS ONCE SITE IS STABILIZED. DISPOSE OF ACCUMULATED SEDIMENT AND SEDIMENT CONTROL PRODUCTS IN A METHOD CONSISTENT WITH STATE AND FEDERAL REGULATIONS.

DEPARTMENT OF ENVIRONMENTAL MANAGEMENT  
OFFICE OF WATER RESOURCES  
FRESHWATER WETLANDS PROGRAM  
APPROVED WITH CONDITIONS  
AS SPECIFIED IN THE LETTER OF APPROVAL  
DATED FILE # 08-02104  
NO CHANGES ALLOWED WITHOUT PRIOR APPROVAL  
APPROVED PLANS MUST BE AT CONSTRUCTION SITE  
Warily L. Freeman