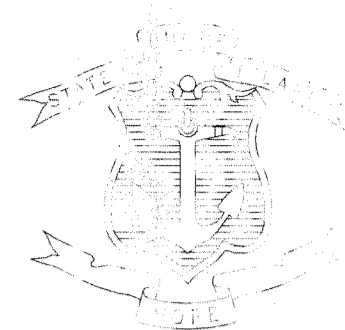


**INDEX**

SHEET NO.	DESCRIPTION
1	COVER SHEET
2	STANDARD PLAN SYMBOLS & STANDARD LEGEND
3	STANDARD NOTES - 1
4	STANDARD NOTES - 2
5	JOB SPECIFIC PLAN SYMBOLS, LEGEND & NOTES
6	GENERAL PLAN
7	DRAINAGE, UTILITY & GRADING PLAN
8-12	CROSS SECTIONS (1-5)
13	SITE DETAILS - 1
14	SITE DETAILS - 2
15	ELECTRICAL OUTDOOR LIGHTING PLAN - OE-1
16	OUTDOOR LIGHTING ELECTRICAL DETAILS - OE-2
17	STRUCTURAL GENERAL NOTES 1
18	STRUCTURAL GENERAL NOTES 2
19	FOUNDATION PLAN
20	FOUNDATION DETAILS
21	MISCELLANEOUS DETAILS
22	CRANE SUPPORT DETAILS
23-31	ARCHITECTURAL PLANS (A 1.0 - A 6.0)
32-35	ARCHITECTURAL MECHANICAL PLANS (M 1.0 - M 4.0)
36-40	ARCHITECTURAL ELECTRICAL PLANS (E 0.1 - E 3.1)
41-44	ARCHITECTURAL PLUMBING PLANS (P 1.0 - P 3.1)
45-46	ARCHITECTURAL FIRE PROTECTION PLANS (FP 1.0 - FP 2.0)

STATE OF RHODE ISLAND



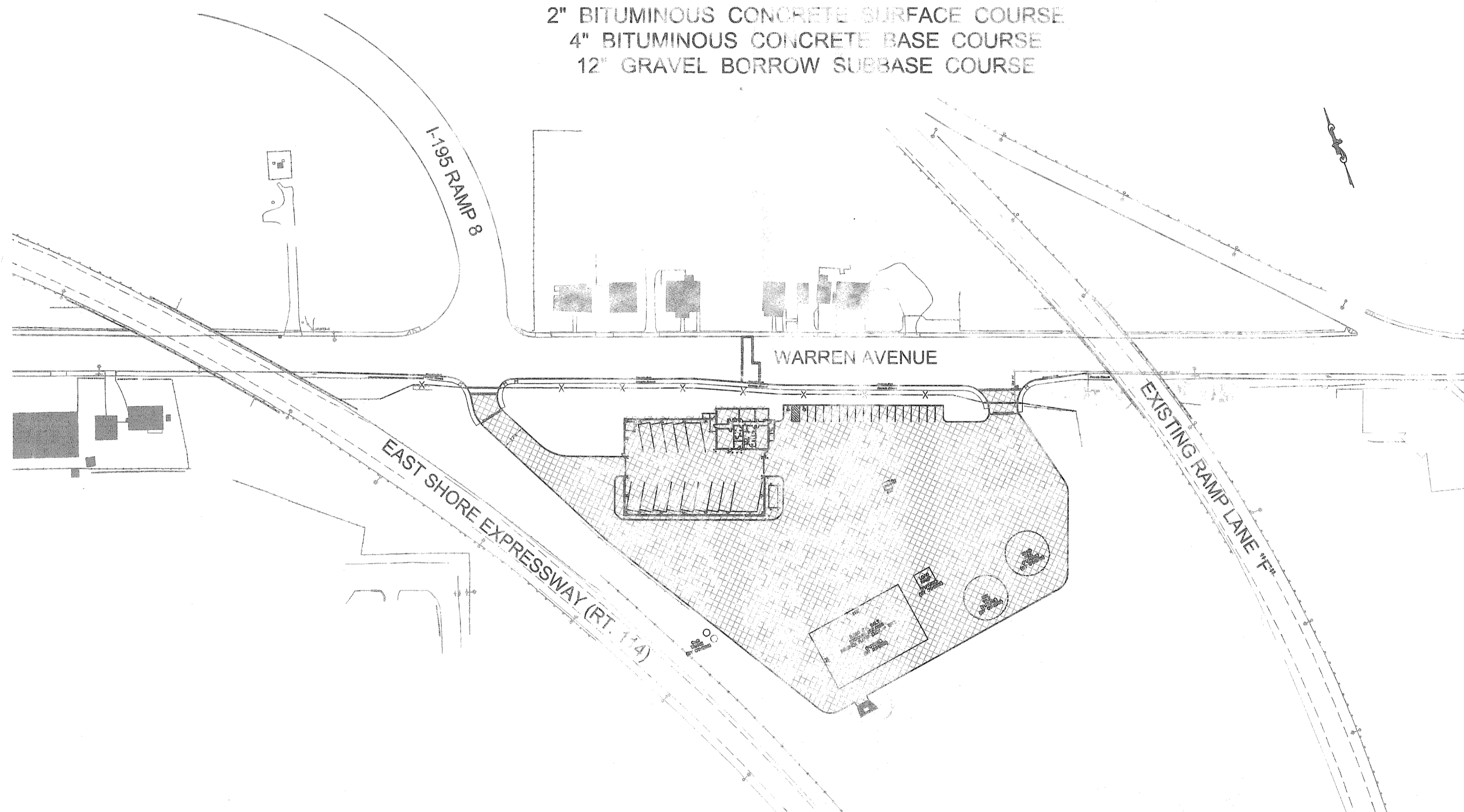
DEPARTMENT OF TRANSPORTATION  
 PLAN OF PROPOSED  
**SALT STORAGE FACILITIES CONTRACT-4**  
 WARREN AVENUE

CITY OF EAST PROVIDENCE  
 COUNTY OF PROVIDENCE

R.I. CONTRACT NO.: 2009-CH-019 F.A. PROJECT NO.: STL-STRG(007)

PAVEMENT STRUCTURE

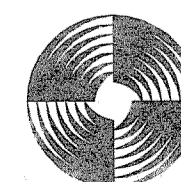
2" BITUMINOUS CONCRETE SURFACE COURSE  
 4" BITUMINOUS CONCRETE BASE COURSE  
 12" GRAVEL BORROW SUBBASE COURSE



LAYOUT PLAN  
 1"=100'

SCALES OF DRAWINGS  
 Plans 1 inch = 30 feet  
 Cross Sections 1 inch = 10 feet Horizontal  
 Cross Sections 1 inch = 10 feet Vertical

BASE OF LEVELS  
 NGVD 29 (V)  
 NAD 83 (H)



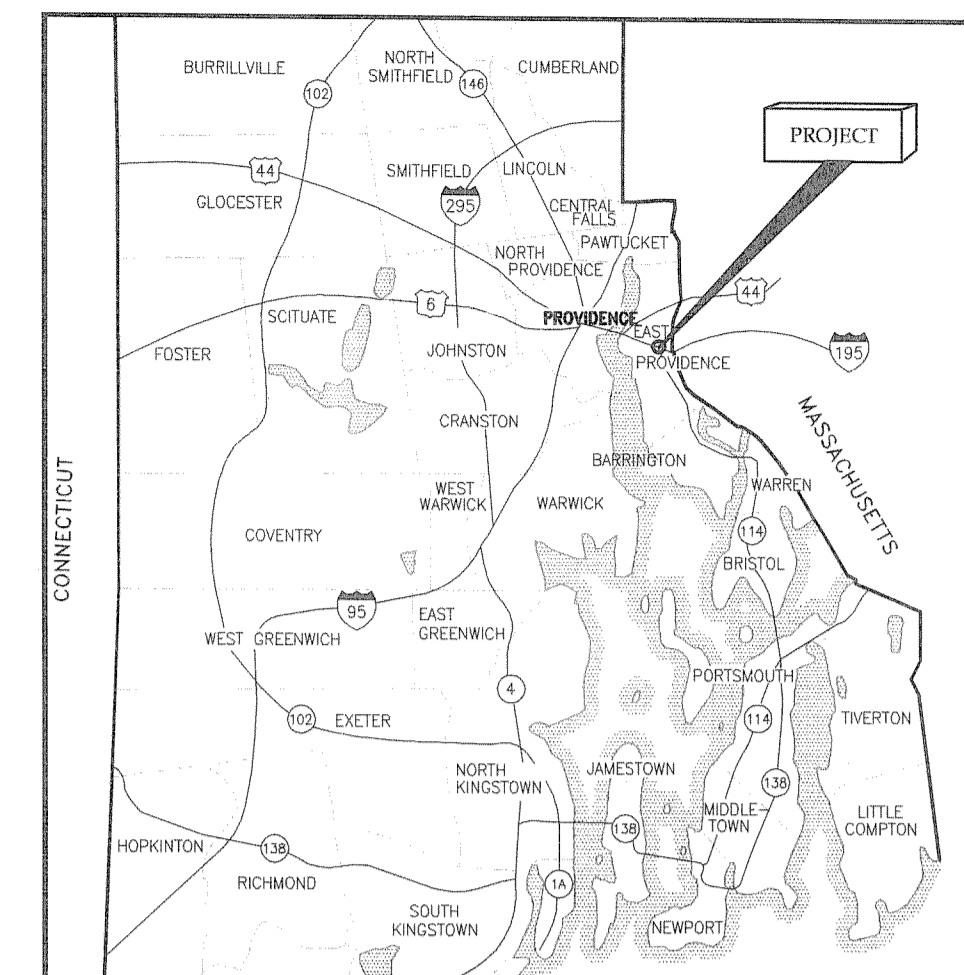
G. PROFIO & ASSOCIATES, INC.  
 CIVIL & STRUCTURAL ENGINEERS/SURVEYORS  
 LAND PLANNERS/ENVIRONMENTAL SCIENTISTS  
 85 CORLISS STREET, P.O. BOX 5145, PROVIDENCE, RI 02940  
 401-272-6000

Contract Number 2009-CH-019

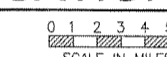
Number of Sheet 1

Total Sheets 46

FED. ROAD DIV. NO.	STATE	FEDERAL AID PROJECT NO.	FISCAL YEAR	SHEET NO.	TOTAL SHEETS
	RI	SLT-STRG(007)		1	46



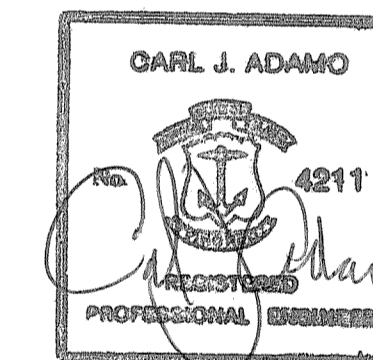
LOCATION MAP



SCALE IN MILES

R.I. STANDARD SPECIFICATIONS AND STANDARD DETAILS

SPECIFICATIONS TO GOVERN THIS PROJECT ARE THE R.I. STANDARD SPECIFICATIONS FOR ROAD AND BRIDGE CONSTRUCTION, 2004 EDITION, AND THE STATE AND FEDERAL SPECIAL PROVISIONS INCLUDED IN THE CONTRACT DOCUMENTS. STANDARD DETAILS FOR THIS PROJECT ARE R.I. STANDARD DETAILS, 1998 EDITION, WITH ALL REVISIONS.



2-3-09

FEB 6 2009

RIDEM RE-SUBMISSION  
 FEBRUARY 3, 2009

DEPARTMENT OF ENVIRONMENTAL MANAGEMENT  
 OFFICE OF WATER RESOURCES  
 FRESHWATER WETLANDS PROGRAM

R.I. DEPARTMENT OF TRANSPORTATION - PROVAL  
 DATED FEB 17 2009 FILE # 09-0005  
 NO CHANGES ALLOWED WITHOUT PRIOR APPROVAL  
 APPROVED PROVED PLANS MUST BE AT CONSTRUCTION SITE

DEPUTY CHIEF ENGINEER \_\_\_\_\_ DATE \_\_\_\_\_  
 APPROVED \_\_\_\_\_

CHIEF ENGINEER \_\_\_\_\_ DATE \_\_\_\_\_  
 APPROVED \_\_\_\_\_

DIRECTOR \_\_\_\_\_ DATE \_\_\_\_\_

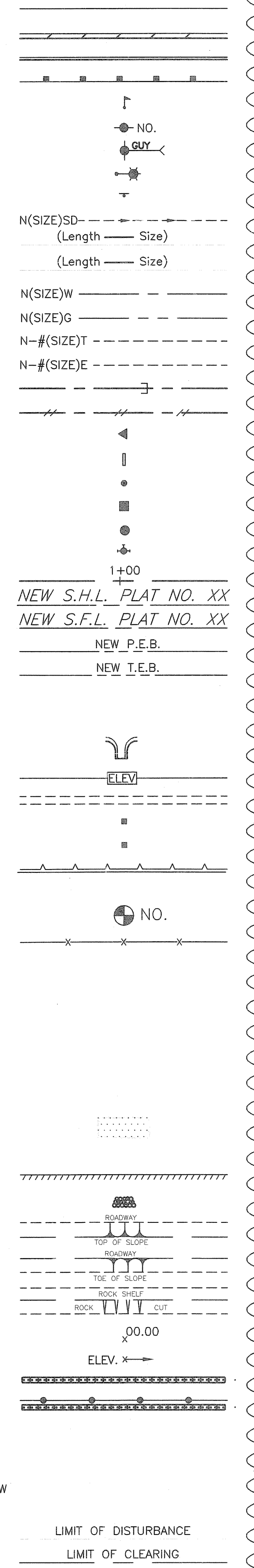
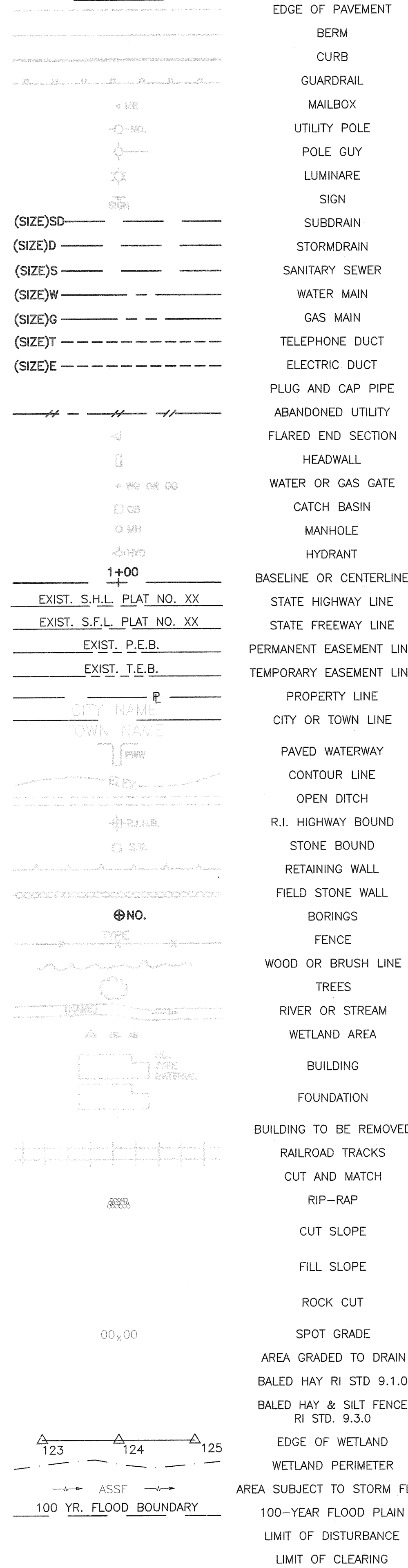
DEPARTMENT OF TRANSPORTATION  
 FEDERAL HIGHWAY ADMINISTRATION

APPROVED \_\_\_\_\_

DIVISION ADMINISTRATOR \_\_\_\_\_ DATE \_\_\_\_\_

**EXISTING**

**NEW**



- 1.1.0 UNDERDRAIN
- 1.3.0 CONCRETE CONNECTING COLLAR
- 2.1.0 CONCRETE HEADWALLS FOR PIPE CULVERTS
- 2.2.0 STANDARD HEADWALLS FOR MULTIPLE 3'-6" TO 7'-0" PIPE CULVERTS
- 2.3.0 (DIA.) PRECAST CONCRETE FLARED END SECTION
- 3.2.0 BRICK/SOLID BLOCK 4'-0" ROUND MANHOLE
- 3.2.1 (DIA.) BRICK/SOLID BLOCK 5'-0" OR 6'-0" ROUND MANHOLE
- 3.3.0 BRICK/SOLID BLOCK TYPE "D" SQUARE CATCH BASIN
- 3.3.2 BRICK/SOLID BLOCK TYPE "F" SQUARE CATCH BASIN
- 3.3.3 SOLID BLOCK FLUSH SQUARE CATCH BASIN
- 3.4.0 BRICK/SOLID BLOCK TYPE "D" ROUND CATCH BASIN
- 3.4.1 BRICK/SOLID BLOCK ROUND CATCH BASIN WITH GUTTER INLET
- 3.4.2 BRICK/SOLID BLOCK TYPE "F" ROUND CATCH BASIN
- 3.4.3 BRICK/SOLID BLOCK TYPE "R" CATCH BASIN
- 3.4.4 SOLID BLOCK FLUSH ROUND CATCH BASIN
- 3.4.5 (DIA.) BRICK/SOLID BLOCK 5'-0" OR 6'-0" ROUND CATCH BASIN
- 3.5.0 SOLID BLOCK SHALLOW TYPE "F" SQUARE CATCH BASIN
- 3.5.1 (SIZE) SOLID BLOCK SHALLOW 5'-0" OR 6'-0" SQUARE CATCH BASIN
- 3.6.0 BRICK/SOLID BLOCK DROP INLET
- 3.7.0 (DIA.) BRICK/SOLID BLOCK ROUND MANHOLE OR CATCH BASIN GREATER THAN 12'-0"
- 4.2.0 PRECAST 4'-0" ROUND MANHOLE
- 4.2.1 PRECAST 5'-0" ROUND MANHOLE
- 4.2.2 PRECAST 6'-0" ROUND MANHOLE
- 4.3.0 (SIZE) PRECAST 4'-0" OR 6'-0" SQUARE MANHOLE OR CATCH BASIN
- 4.4.0 (DIA.) PRECAST 4'-0", 5'-0", OR 6'-0" ROUND CATCH BASIN
- 4.5.0 PRECAST CONCRETE DROP INLET
- 4.5.1 PRECAST CONCRETE DROP INLET LATERAL OUTLET
- 4.5.2 PRECAST CONCRETE DROP INLET LONGITUDINAL OUTLET
- 5.3.0 CATCH BASIN AND MANHOLE STEP
- 5.4.0 CONCRETE COLLARS
- 6.1.0 LIGHT-DUTY SQUARE FRAME AND ROUND COVER
- 6.1.1 HEAVY DUTY SQUARE FRAME AND ROUND COVER
- 6.2.0 LIGHT-DUTY ROUND FRAME AND COVER
- 6.2.1 HEAVY-DUTY ROUND FRAME AND COVER
- 6.3.0 SQUARE FRAME AND GRATE
- 6.3.1 SQUARE FRAME AND GRATE
- 6.3.2 SQUARE FRAME AND GRATE (BICYCLE SAFE)
- 6.3.3 HIGH CAPACITY FRAME AND GRATE
- 6.3.4 HIGH CAPACITY FRAME AND GRATE (BICYCLE SAFE)
- 6.4.0 ROUND FRAME AND GRATE
- 7.1.0S PRECAST CONCRETE CURB (STRAIGHT)
- 7.1.0C PRECAST CONCRETE CURB (CIRCULAR)
- 7.1.1 3'-0" PRECAST CONCRETE TRANSITION CURB
- 7.1.2 6'-0" PRECAST CONCRETE TRANSITION CURB
- 7.1.4 PRECAST 2'-0" RADIUS CORNER
- 7.1.5 PRECAST CONCRETE INLET STONE (FOR SQUARE CATCH BASIN)
- 7.1.6 PRECAST CONCRETE INLET STONE (FOR ROUND CATCH BASIN)
- 7.1.7 PRECAST CONCRETE APRON STONE (FOR SQUARE CATCH BASIN)
- 7.1.8 PRECAST CONCRETE APRON STONE (FOR ROUND CATCH BASIN)
- 7.2.0S PRECAST CONCRETE SLOPED FACE CURB (STRAIGHT)
- 7.2.0C PRECAST CONCRETE SLOPED FACE CURB (CIRCULAR)
- 7.2.1 PRECAST CONCRETE SLOPED FACE TRANSITION CURB
- 7.2.2 PRECAST CONCRETE TRANSITION CURB (VERTICAL FACE TO SLOPED FACE)
- 7.3.0S GRANITE CURB (STRAIGHT)
- 7.3.0C GRANITE CURB (CIRCULAR)
- 7.3.1 3'-0" GRANITE TRANSITION CURB
- 7.3.2 6'-0" GRANITE TRANSITION CURB
- 7.3.3 GRANITE WHEELCHAIR RAMP TRANSITION CURB
- 7.3.4 GRANITE 2'-0" RADIUS CORNER
- 7.3.5 GRANITE INLET STONE (FOR SQUARE CATCH BASIN)
- 7.3.6 GRANITE INLET STONE (FOR ROUND CATCH BASIN)
- 7.3.7 GRANITE APRON STONE (FOR SQUARE CATCH BASIN)
- 7.3.8 GRANITE APRON STONE (FOR ROUND CATCH BASIN)
- 7.4.0 GRANITE SLOPED FACE CURB
- 7.4.1 GRANITE SLOPED FACE TRANSITION CURB

- 7.4.2 GRANITE TRANSITION CURB (VERTICAL FACE TO SLOPE FACE)
- 7.5.0 BITUMINOUS CONCRETE LIP CURB
- 7.5.1A BITUMINOUS BERM (CONSTRUCTION METHOD A)
- 7.5.1B BITUMINOUS BERM (CONSTRUCTION METHOD B)
- 7.6.0 CURB SETTING DETAIL
- 8.2.0 BITUMINOUS CONCRETE DITCH
- 8.3.0 RIP-RAP DITCH
- 8.4.0 PAVED WATERWAY
- 9.1.0 BALED HAY EROSION CHECK
- 9.2.0 SILT FENCE DETAIL
- 9.3.0 BALED HAY DITCH EROSION CHECK AND SILT FENCE COMBINED
- 9.4.0 BALED HAY DITCH AND SWALE EROSION CHECK
- 9.5.0 LOG AND HAY CHECK DAM
- 9.7.0 DEWATERING BASIN
- 9.8.0 BALED HAY CATCH BASIN INLET PROTECTION
- 9.9.0 CONSTRUCTION ACCESS
- 10.1.0 WET STONE MASONRY RETAINING WALL
- 10.2.0 RUBBLE MASONRY WALL
- 10.3.0 CONCRETE RETAINING WALL
- 10.4.0 STONE MASONRY STEPS
- 14.1.0 CONCRETE HIGHWAY BOUND
- 15.1.0 POST AND MOUNTINGS FOR RURAL MAILBOX
- 15.2.0 (NO.) POST AND MULTIPLE MOUNTINGS FOR RURAL MAILBOXES
- 18.2.0 PRECAST TYPE "A" HANDHOLE
- 18.2.2 HEAVY DUTY TYPE "H" HANDHOLE
- 18.3.0 ALUMINUM LIGHTING STANDARDS
- 20.2.0 BI-DIRECTIONAL CONTROL DEVICE
- 24.6.1 STREET SIGN MOUNTING DETAIL
- 26.2.0 POLYETHYLENE DRUM WITH MARKINGS
- 26.3.0 PVC PLASTIC PIPE TYPE III BARRICADE
- 31.1.0 CHAIN LINK FENCE 3'-0" TO 4'-0"
- 31.2.0 CHAIN LINK FENCE 5'-0" TO 6'-0"
- 31.2.1 CHAIN LINK FENCE 5'-0" TO 6'-0" INTERMEDIATE POST
- 31.3.0 WOVEN WIRE RIGHT-OF-WAY FENCE (STEEL POST)
- 34.1.0 TYPICAL GUARDRAIL INSTALLATION
- 34.2.0 STEEL BEAM GUARDRAIL
- 34.2.1 STEEL BEAM GUARDRAIL DETAILS
- 34.2.2 STEEL BEAM GUARDRAIL DOUBLE FACED ASSEMBLY
- 34.2.3 STEEL BEAM GUARDRAIL FIXTURES
- 34.2.5 STEEL BEAM GUARDRAIL REFLECTORIZED TRIANGULAR DELINEATOR
- 34.3.1 GUARDRAIL END SECTION
- 34.3.2 TERMINAL END SECTION (SINGLE FACE)
- 34.3.3 ANCHORAGE DETAILS APPROACH END SECTION
- 34.3.4 ANCHORAGE DETAILS TRAILING END SECTION
- 34.4.0 STEEL BACKED TIMBER GUARDRAIL
- 34.4.1 STEEL BACKED TIMBER GUARDRAIL TERMINAL SECTION-TYPE 1
- 40.1.0 DOUBLE-FACED PRECAST MEDIAN BARRIER
- 40.2.0 SINGLE-FACED PRECAST MEDIAN BARRIER
- 40.2.1 SINGLE-FACED PRECAST MEDIAN BARRIER
- 40.3.0 PRECAST MEDIAN BARRIER TRANSITION UNIT
- 40.5.0 PRECAST MEDIAN BARRIER FOR TEMPORARY TRAFFIC CONTROL
- 43.1.0 CEMENT CONCRETE SIDEWALK
- 43.2.0 BITUMINOUS CONCRETE SIDEWALK
- 43.3.0 WHEELCHAIR RAMP
- 43.3.1 WHEELCHAIR RAMP FOR LIMITED RIGHT-OF-WAY AREAS
- 43.4.0 DRIVEWAY DEVELOPMENT FOR 3'-0" TRANSITION CURB
- 43.4.1 DRIVEWAY DEVELOPMENT FOR 6'-0" TRANSITION CURB
- 43.5.0 CEMENT CONCRETE DRIVEWAYS
- 48.1.0 DETECTABLE WARNING SYSTEM
- 51.1.0 TREE PROTECTION DEVICE
- 51.1.1 DRIP LINE TREE PROTECTION DEVICE FOR EXISTING TREES
- 51.2.0 SHRUB PROTECTION DEVICE
- 51.3.0 TREE WELL
- 51.4.0 TREE WALL

- AB ADJUST CATCH BASIN TO GRADE
- ABM ADJUST CATCH BASIN TO MANHOLE
- AC ADJUST CURB STOP TO GRADE
- AD ADJUST DRAINAGE MANHOLE TO GRADE
- AE ADJUST ELECTRIC MANHOLE TO GRADE
- AFC ADJUST FRAME AND COVER TO GRADE
- AFG ADJUST FRAME AND GRATE TO GRADE
- AG ADJUST GAS GATE BOX TO GRADE
- AHH ADJUST HANDHOLE TO GRADE
- AS ADJUST SANITARY SEWER MANHOLE TO GRADE
- AT ADJUST TELEPHONE MANHOLE TO GRADE
- AW ADJUST WATER GATE BOX TO GRADE
- BCD BITUMINOUS CONCRETE DRIVEWAY 3" BITUMINOUS CONCRETE TYPE I-2 8" GRAVEL BORROW SUBBASE COURSE
- BPS BUILD NEW STRUCTURE OVER EXISTING PIPE
- CCB CLEAN CATCH BASIN
- CCP CUT AND CAP PIPE WITH RESTRAINT (ALL SIZES)
- CFP CLEAN AND FLUSH PIPE
- CG CLEARING AND GRUBBING
- CMH CLEAN MANHOLE
- CP (DEPTH) COLD PLANE
- CPP CUT AND PLUG PIPE (ALL TYPES, ALL SIZES)
- DC REMOVE AND DISPOSE BITUMINOUS CURB
- DCB REMOVE AND DISPOSE CONCRETE CURB
- DDI REMOVE AND DISPOSE DRAINAGE DITCH
- DF REMOVE AND DISPOSE FENCE
- DFC REMOVE AND DISPOSE FRAME AND COVER
- DFE REMOVE AND DISPOSE FLARED END SECTION
- DFG REMOVE AND DISPOSE FRAME AND GRATE
- DFH REMOVE AND DISPOSE FIRE HYDRANT
- DFP REMOVE AND DISPOSE FLEXIBLE PAVEMENT
- DG REMOVE AND DISPOSE GUARDRAIL
- DH REMOVE AND DISPOSE HEADWALL
- DHB REMOVE AND DISPOSE HIGHWAY BOUND
- DHH REMOVE AND DISPOSE HANDHOLE
- DL REMOVE AND DISPOSE LIGHT AND FOUNDATION
- DMB REMOVE AND DISPOSE MEDIAN BARRIER
- DMH REMOVE AND DISPOSE MANHOLE
- DMM REMOVE AND DISPOSE MEDIAN MARKER
- DOW REMOVE AND DISPOSE OBSERVATION WELL
- DP REMOVE AND DISPOSE PIPE
- DPB REMOVE AND DISPOSE PAVEMENT AND RIGID BASE
- DRB REMOVE AND DISPOSE RIGID BASE
- DS REMOVE AND DISPOSE SIGN
- DSS REMOVE AND DISPOSE TRAFFIC SIGNAL SYSTEM
- DSW REMOVE AND DISPOSE SIDEWALK
- DTD REMOVE AND DISPOSE TELEPHONE DUCT BANKS
- DUP REMOVE AND DISPOSE UTILITY POLE
- DWW REMOVE AND DISPOSE PAVED WATERWAY
- FF FILTER FABRIC RIPRAP FLARED END UNDERLAYMENT
- GET FLARED GUARDRAIL END TREATMENT
- IA IMPACT ATTENUATOR
- IDL IMPERVIOUS DITCH LINER
- LOD LIMIT OF DISTURBANCE
- LOR LIMIT OF REGRADING
- LS 4" LOAM AND SEED

- NFH NEW FIRE HYDRANT WITH GATE VALVE
- NIC NOT IN THIS CONSTRUCTION CONTRACT
- NWB FURNISH AND INSTALL NEW WATER GATE VALVE BOX
- NWVB FURNISH AND INSTALL NEW WATER GATE VALVE AND BOX
- NWCB FURNISH AND INSTALL NEW WATER CURB STOP BOX
- NWSB FURNISH AND INSTALL NEW WATER CURB STOP AND BOX
- PCD PERMANENT CHECK DAM
- PS 4" PLANTABLE SOIL AND SEED
- RCB RECONSTRUCT TYPE "D" CATCH BASIN, TO CATCH BASIN WITH GUTTER INLET
- RCM R.I.D.O.T. COMMUNICATIONS MANHOLE
- RHH REMOVE, HANDLE, HAUL, TRIM, RESET CURB EDGING, STRAIGHT, CIRCULAR (ALL TYPES)
- RLP RELOCATE LAMP POST
- RMB RELOCATE MAILBOX (BY OTHERS)
- RPM REMOVE PAVEMENT MARKINGS
- RRP RIP-RAP PAD (SEE DETAIL)
- RRS REMOVE AND RELOCATE SIGN
- RUP RELOCATE UTILITY POLE (BY OTHERS)
- SB STONE BAFFLE
- SBAE STEEL BEAM BRIDGE CONNECTION APPROACH END (W/O NESTED RAIL)
- SBTE STEEL BEAM BRIDGE CONNECTION TRAILING END (W/NESTED RAIL)
- SD- STRUCTURAL DISPOSITION - SEE CS PAGES OF SPECIFICATION
- SF REMOVE AND STOCKPILE FENCE
- SGA SPECIAL GRADED AGGREGATE
- SGC REMOVE AND STOCKPILE GRANITE CURB
- SGR REMOVE AND STOCKPILE GUARDRAIL
- SH REMOVE AND STOCKPILE HYDRANT
- SS REMOVE AND STOCKPILE SIGN
- STS REMOVE AND STOCKPILE TRAFFIC SIGNAL SYSTEM
- TB CONCRETE THRUST BLOCK
- TEP TIE EXISTING PIPE INTO NEW STRUCTURE
- TNP TIE NEW PIPE INTO EXISTING STRUCTURE
- TBT THRIE BEAM TRANSITION
- TBBC THRIE BEAM BRIDGE CONNECTION
- TT TREE TRIMMING
- WCM 4" WOOD CHIP MULCH
- 4DY 4" EPOXY RESIN PAVEMENT MARKINGS - DOUBLE YELLOW
- 6W 6" EPOXY RESIN PAVEMENT MARKINGS - WHITE
- 12W 12" EPOXY RESIN PAVEMENT MARKINGS - WHITE
- 6WT 6" PREFORMED PATTERNED MARKING (HIGH PERFORMANCE TAPE)
- 4Y 4" EPOXY RESIN PAVEMENT MARKINGS - YELLOW
- 6Y 6" EPOXY RESIN PAVEMENT MARKINGS - YELLOW
- P.G.L. PROFILE GRADE LINE

DEPARTMENT OF ENVIRONMENTAL MANAGEMENT  
OFFICE OF WATER RESOURCES  
FRESHWATER WETLANDS PROGRAM  
APPROVED WITH CONDITIONS  
AS SPECIFIED IN THE LETTER OF APPROVAL  
DATED FEB 17 2009 FILE # 09-0005  
NO CHANGES ALLOWED WITHOUT PRIOR APPROVAL  
APPROVED PLANS MUST BE AT CONSTRUCTION SITE

**THIS PLAN SHALL NOT BE ALTERED**

REVISIONS		
NO.	DATE	BY
1	6/07	TRB

**RHODE ISLAND**  
**DEPARTMENT OF TRANSPORTATION**

**WARREN AVENUE**  
**MAINTENANCE FACILITY**

EAST PROVIDENCE, RHODE ISLAND

**STANDARD PLAN SYMBOLS & STANDARD LEGEND**

CHECKED BY: M.W.C. DATE: 2/03/08 SCALE: NO SCALE



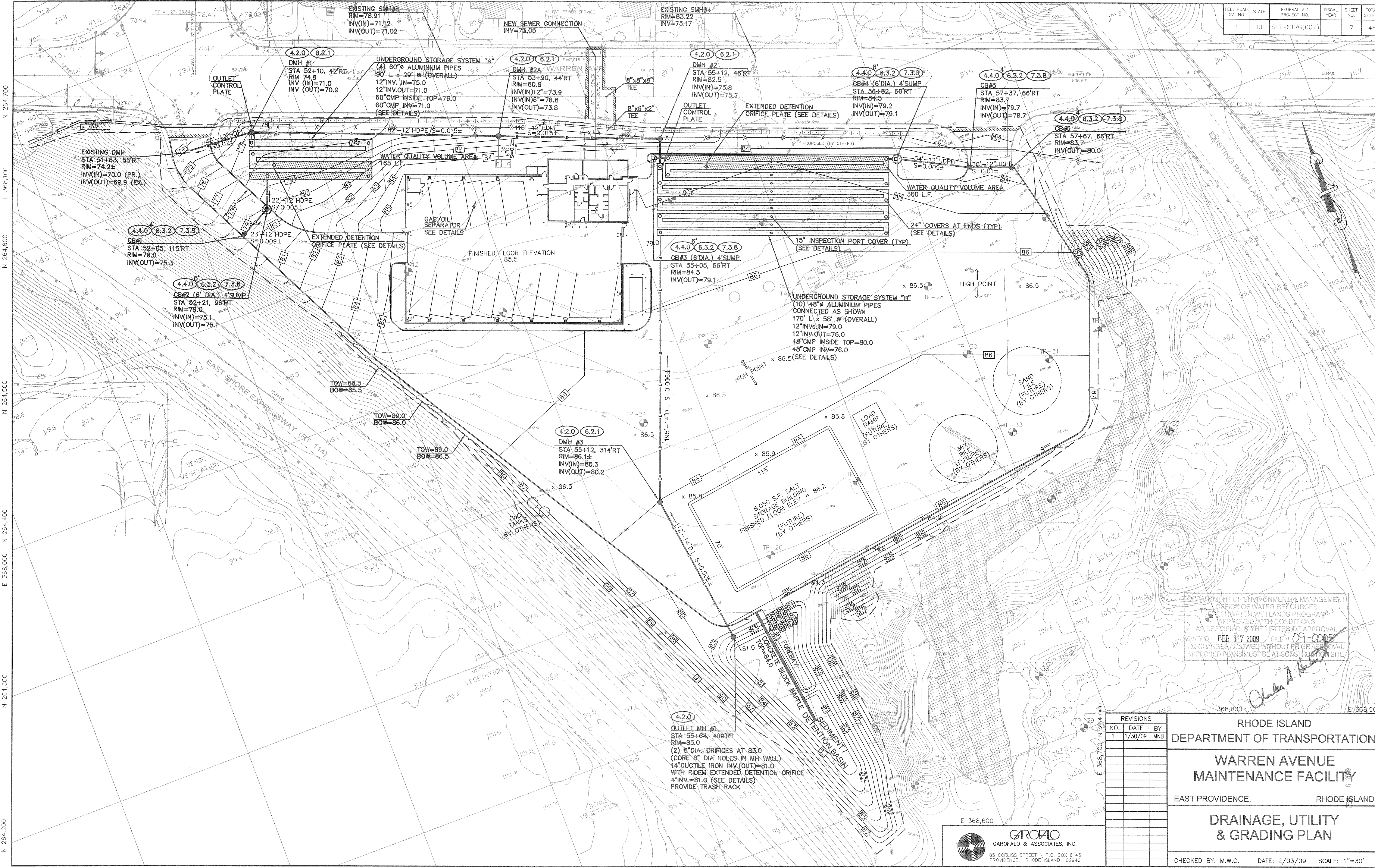








FED. ROAD DIV. NO.	STATE	FEDERAL AID PROJECT NO.	FISCAL YEAR	SHEET NO.	TOTAL SHEETS
1	RI	SLT-STRG(007)		7	46



DEPARTMENT OF ENVIRONMENTAL MANAGEMENT  
 OFFICE OF WATER RESOURCES  
 FRESH WATER WETLANDS PROGRAM  
 APPROVED WITH CONDITIONS  
 AS SPECIFIED IN THE LETTER OF APPROVAL  
 DATED FEB 17 2009 FILE # 09-0005  
 NO CHANGES ALLOWED WITHOUT RWPP APPROVAL  
 APPROVED PLANS MUST BE AT CONSTRUCTION SITE

REVISIONS		
NO.	DATE	BY
1	1/30/09	MNB

**RHODE ISLAND  
DEPARTMENT OF TRANSPORTATION**

**WARREN AVENUE  
MAINTENANCE FACILITY**

EAST PROVIDENCE, RHODE ISLAND

**DRAINAGE, UTILITY  
& GRADING PLAN**

CHECKED BY: M.W.C. DATE: 2/03/09 SCALE: 1"=30'

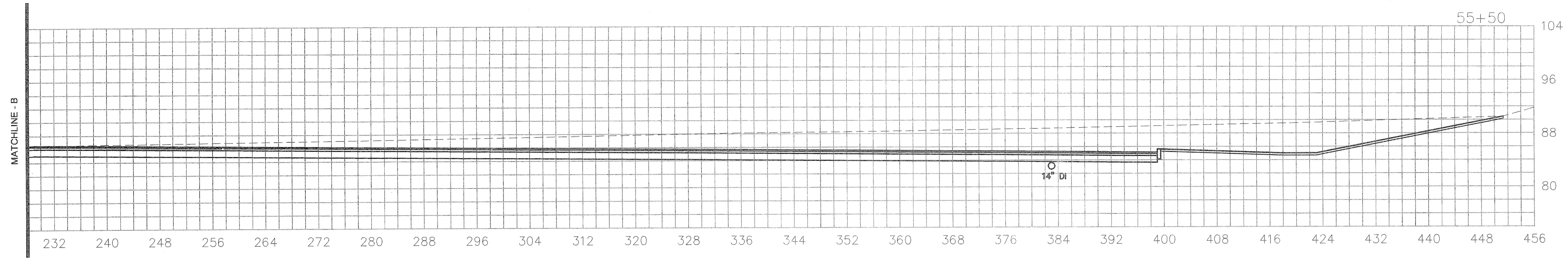
**GAROFALO**  
GAROFALO & ASSOCIATES, INC.  
95 CORLISS STREET \ P.O. BOX 6145  
PROVIDENCE, RHODE ISLAND 02940

L:\5656-04 Warren Ave Maint. - East Providence, RI\dwg\01-Current\565604-Plans.dwg



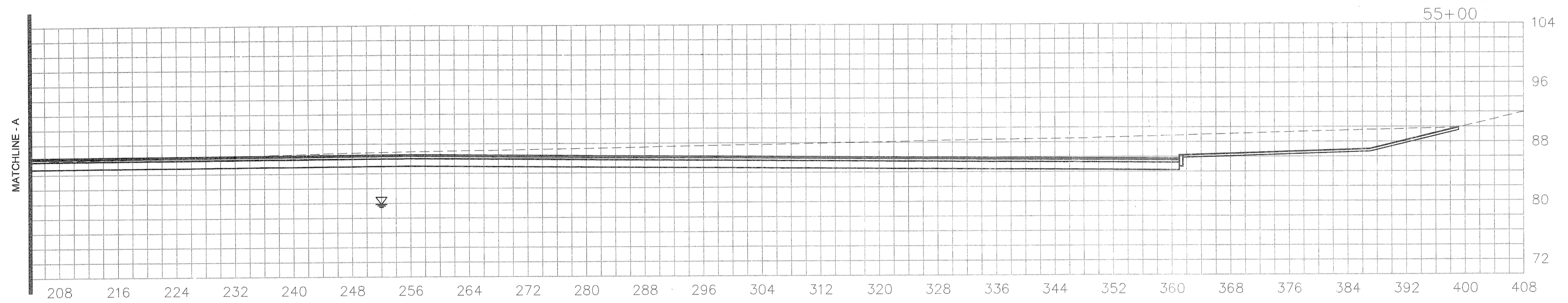
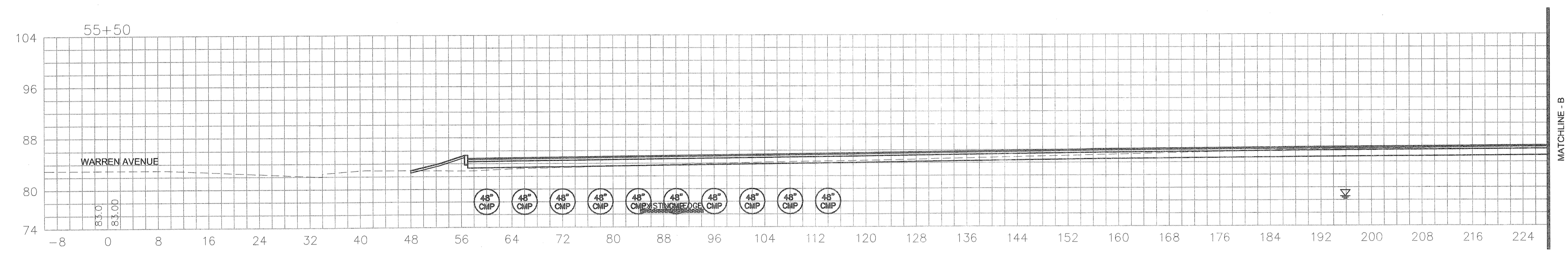


FED. ROAD DIV. NO.	STATE	FEDERAL AID PROJECT NO.	FISCAL YEAR	SHEET NO.	TOTAL SHEETS
1	RI	SLT-STRG(007)		10	46



STATION 55+50

EARTH CUT	FILL
476 SF	2 SF

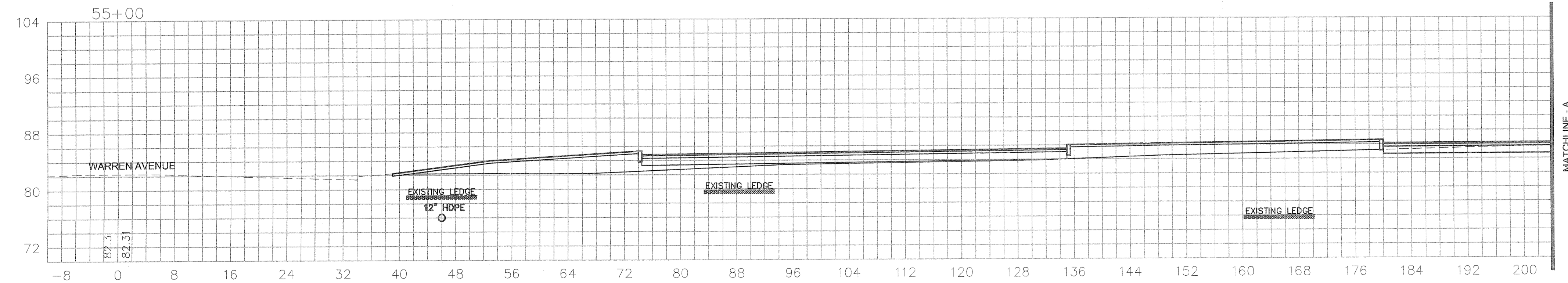


STATION 55+00

EARTH CUT	FILL
540 SF	0 SF

DEPARTMENT OF ENVIRONMENTAL MANAGEMENT  
OFFICE OF WATER RESOURCES  
FRESHWATER WETLANDS PROGRAM  
APPROVED WITH CONDITIONS  
AS SPECIFIED IN THE LETTER OF APPROVAL  
DATED FEB 17 2009 FILE # 09-0005  
NO CHANGES ALLOWED WITHOUT PRIOR APPROVAL  
APPROVED PLANS MUST BE AT CONSTRUCTION TIME

FEB 6 2009



**GAROFALO**  
GAROFALO & ASSOCIATES, INC.  
85 CORLISS STREET \ P.O. BOX 6145  
PROVIDENCE, RHODE ISLAND 02940

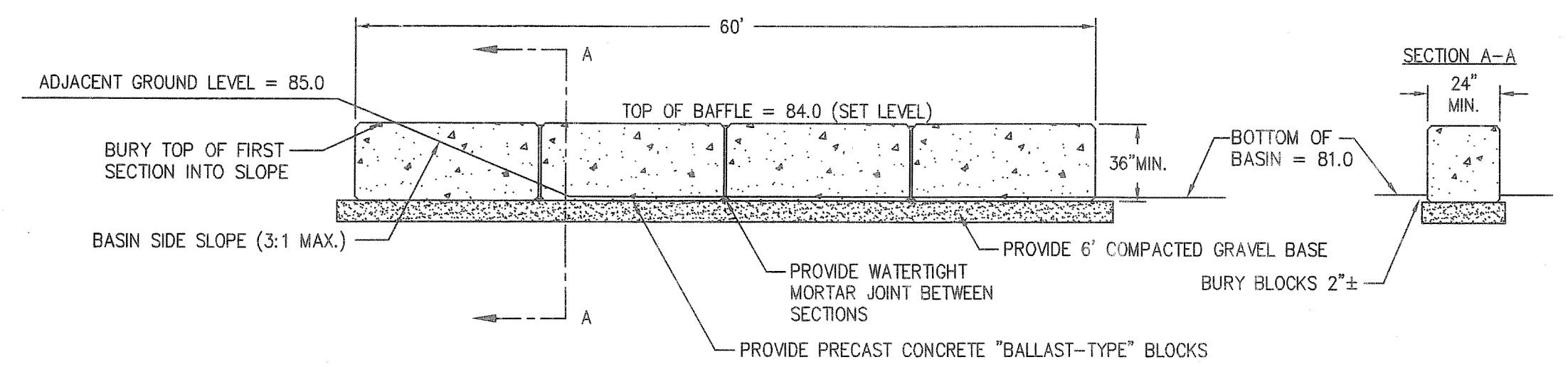
REVISIONS		
NO.	DATE	BY

**RHODE ISLAND**  
DEPARTMENT OF TRANSPORTATION  
**WARREN AVENUE**  
**MAINTENANCE FACILITY**  
EAST PROVIDENCE, RHODE ISLAND  
**CROSS SECTIONS**  
**STA. 55+00 TO STA. 55+50**  
CHECKED BY: M.W.C. DATE: 2/03/09 SCALE: 1"=10'

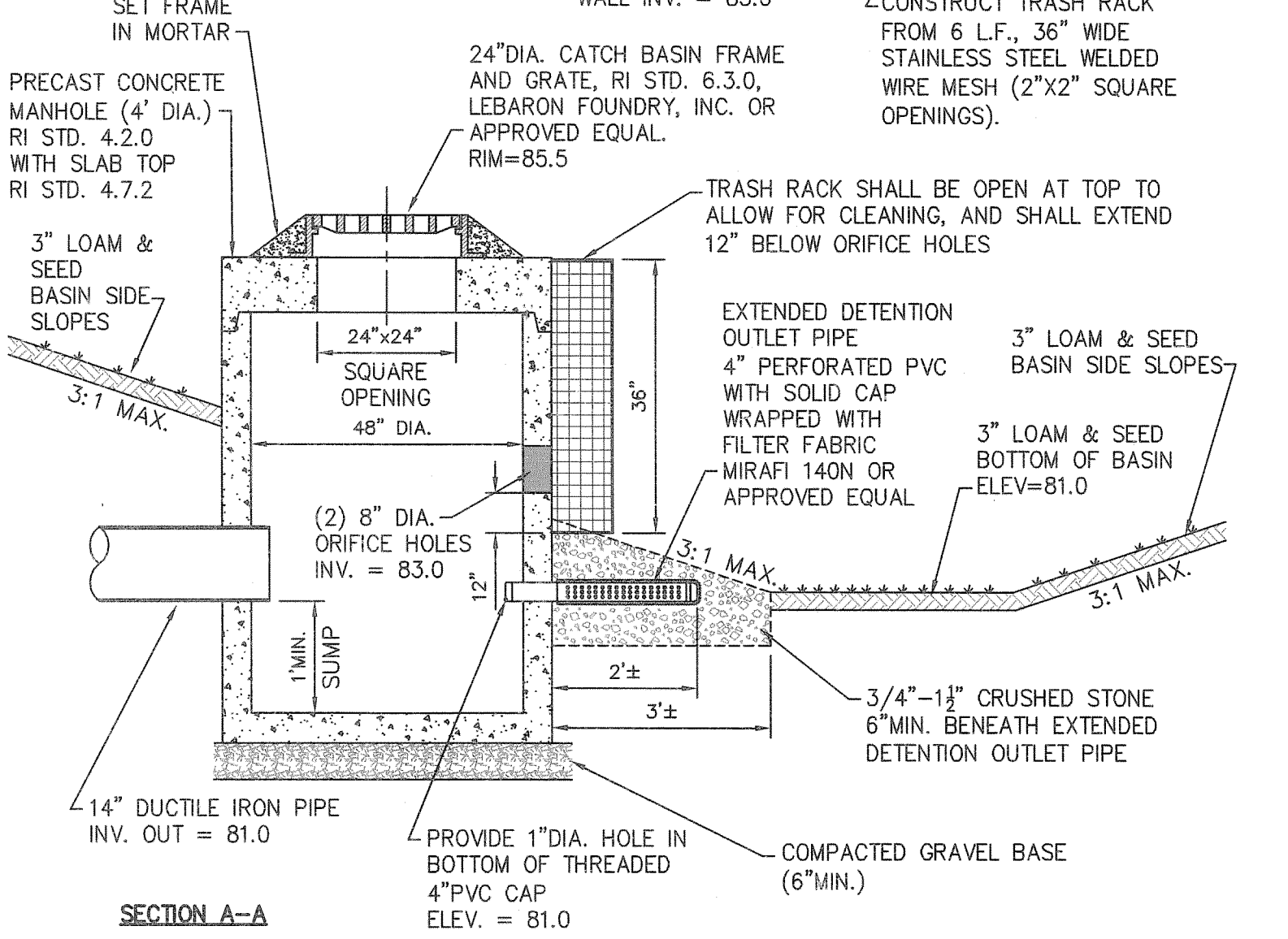
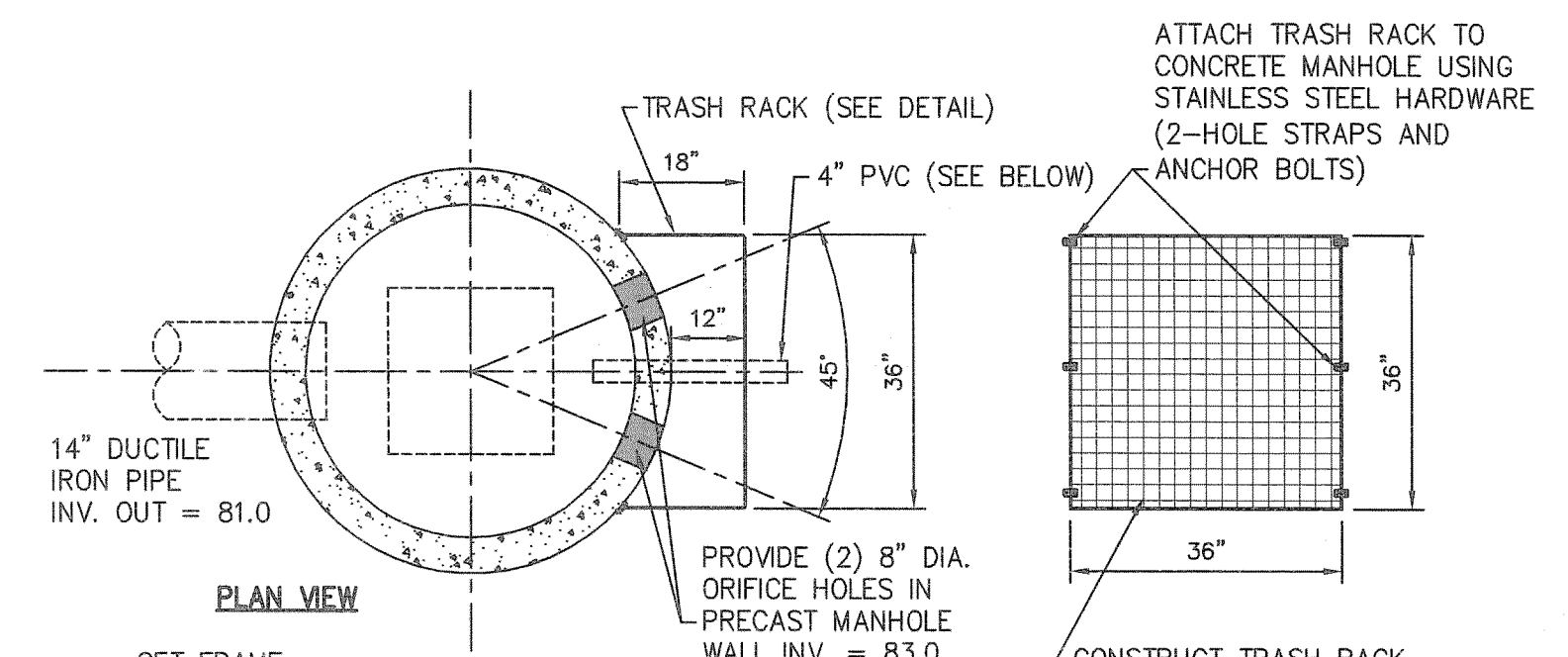




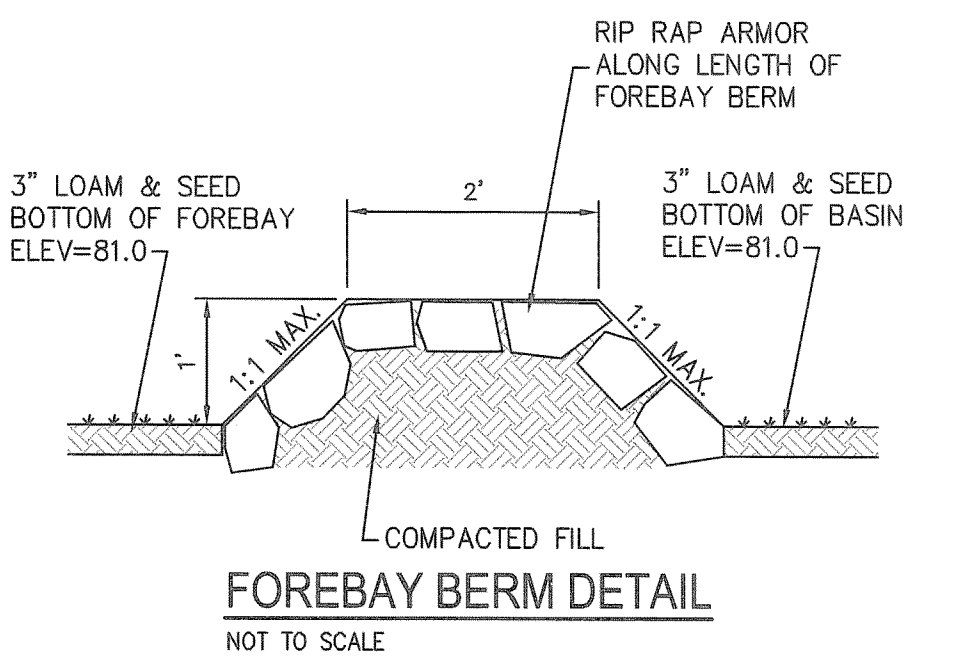
SYSTEM	ALUMINIUM CMP PIPE DIAMETER	NUMBER OF PIPES	OVERALL PIPE LENGTH (INCLUDING HEADERS)	OVERALL SYSTEM WIDTH	INVERT OF PIPES	TOP OF PIPES	12"D INVERT(S) IN	12"D INVERT OUT
"A"	60"	4	90'	29'	71.0	76.0	75.0	71.0
"B"	48"	10	170'	58'	76.0	80.0	79.0	76.0



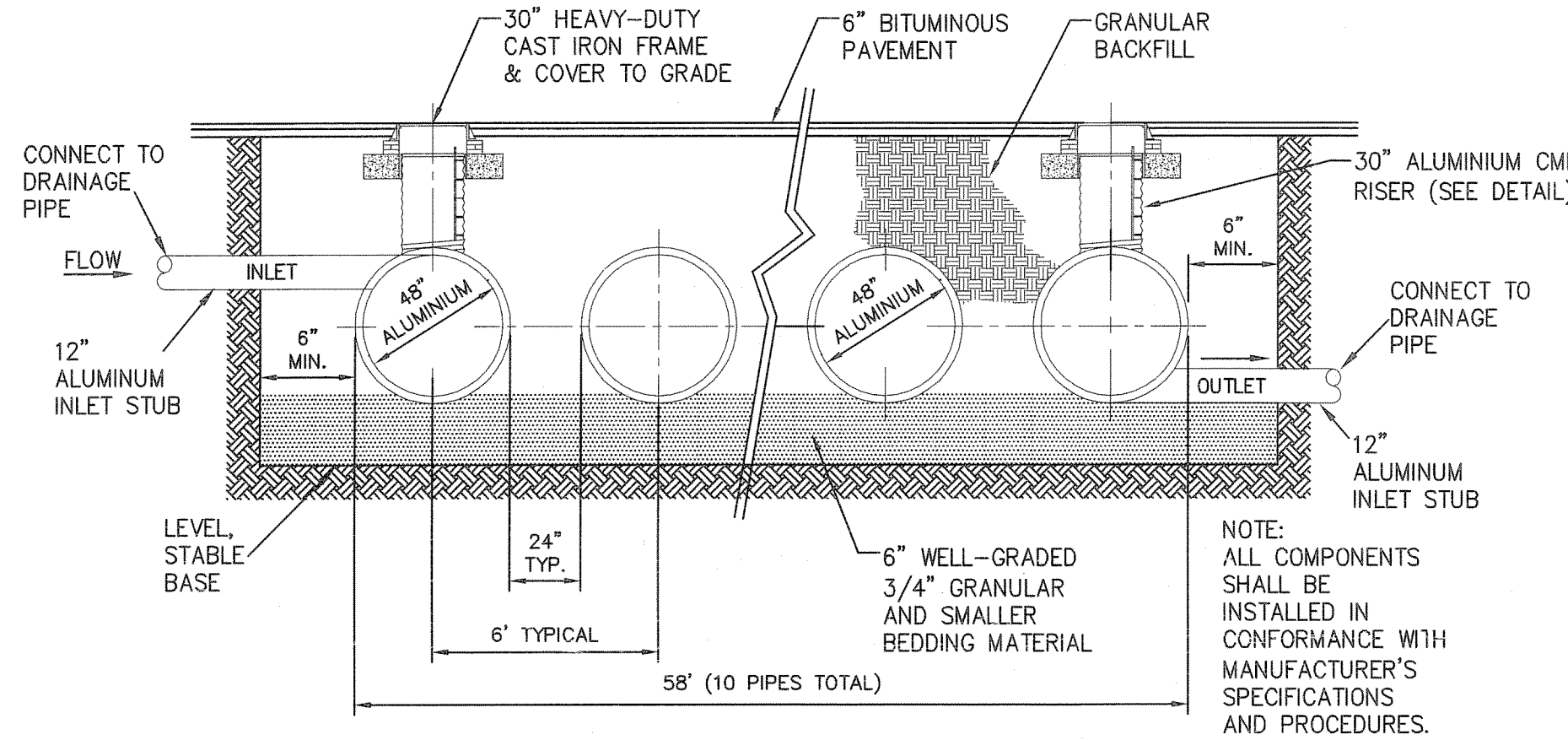
**PRECAST CONCRETE DETENTION BASIN BAFFLE**  
NOT TO SCALE



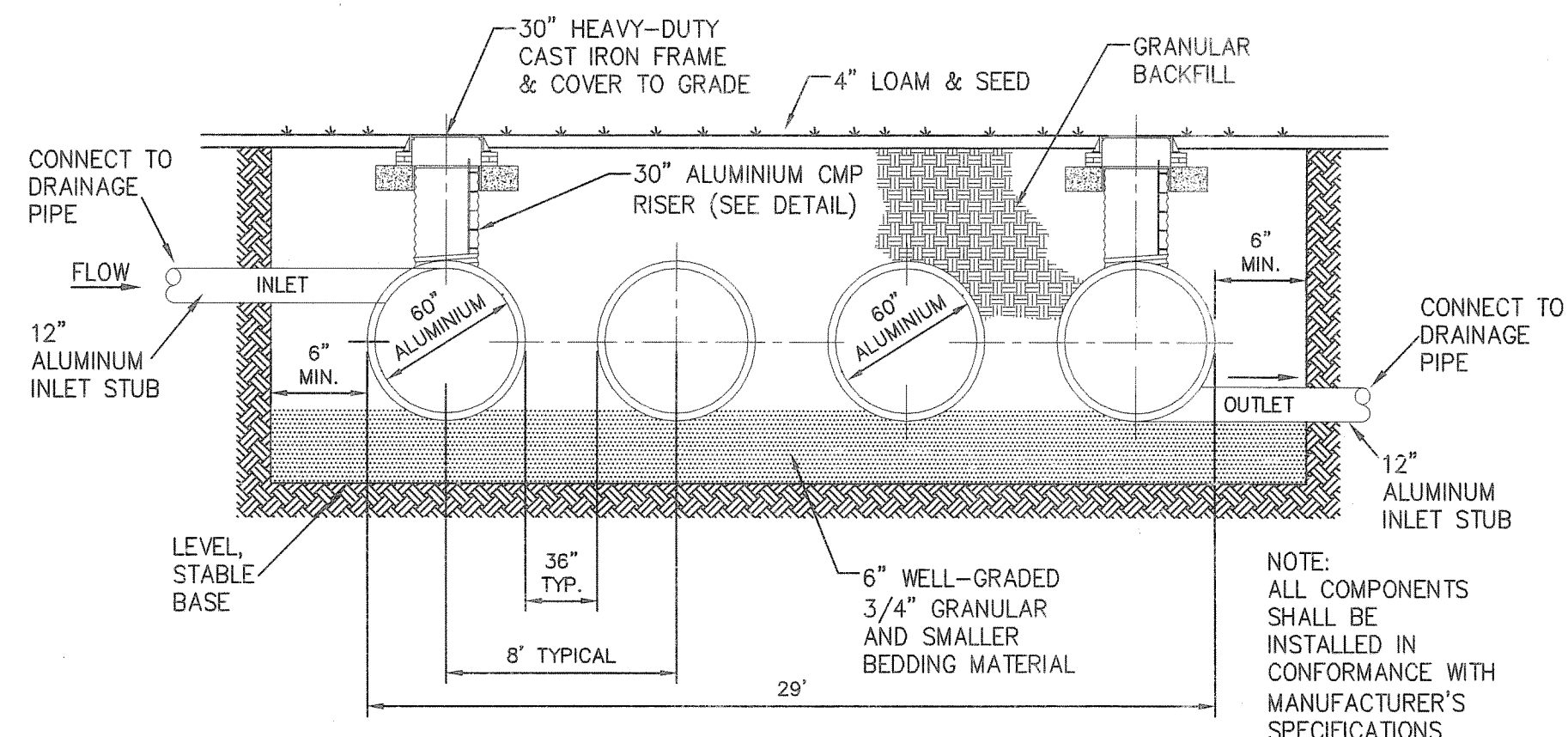
**DETENTION BASIN OUTLET STRUCTURE**  
NOT TO SCALE



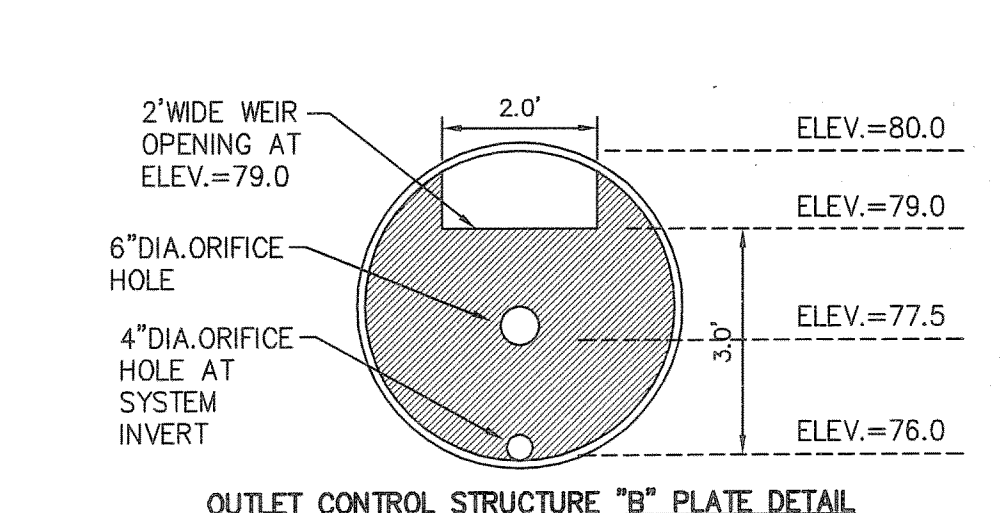
**FOREBAY BERM DETAIL**  
NOT TO SCALE



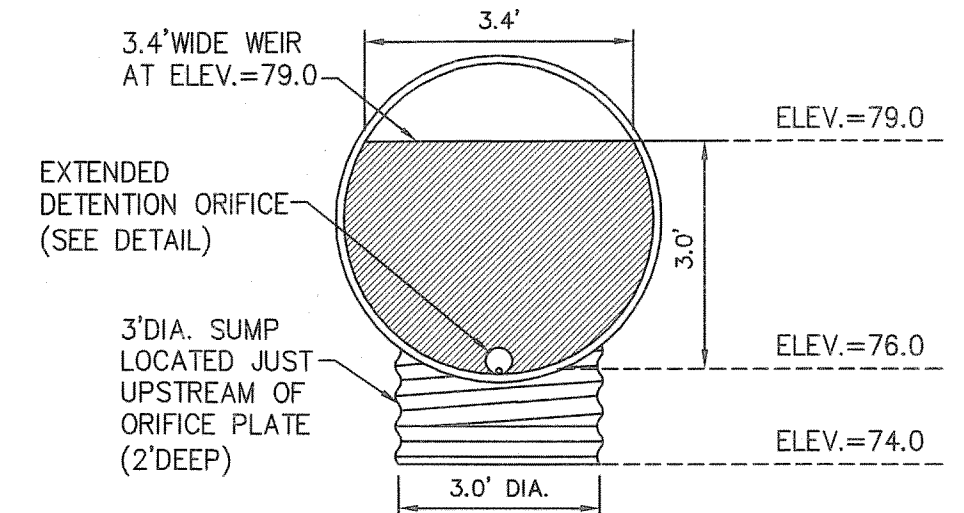
**UNDERGROUND DETENTION SYSTEM "B" CROSS-SECTION**  
NOT TO SCALE



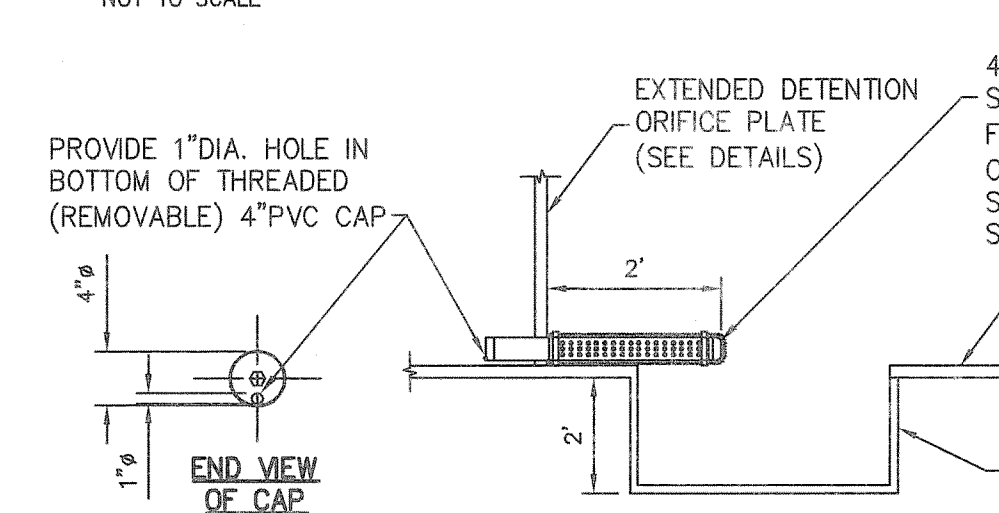
**UNDERGROUND DETENTION SYSTEM "A" CROSS-SECTION**  
NOT TO SCALE



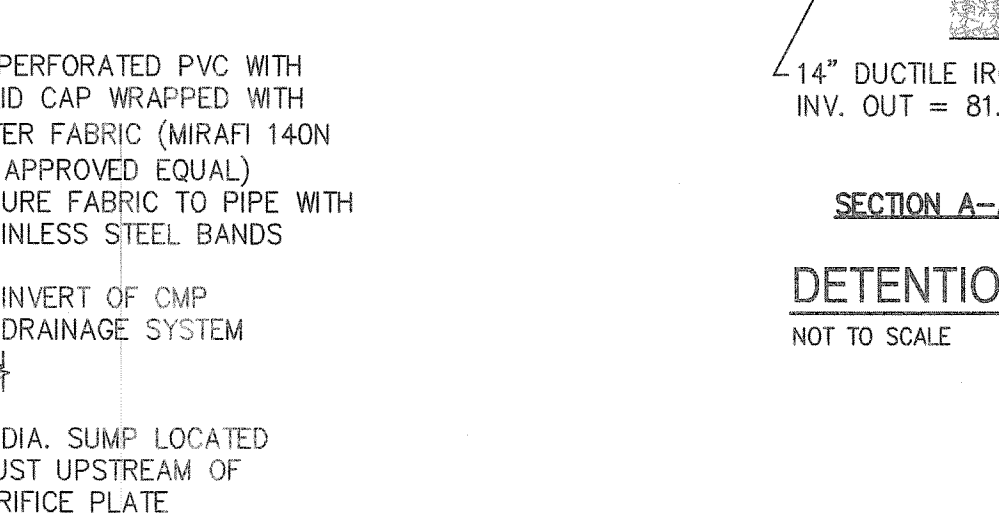
**OUTLET CONTROL STRUCTURE "B" PLATE DETAIL**



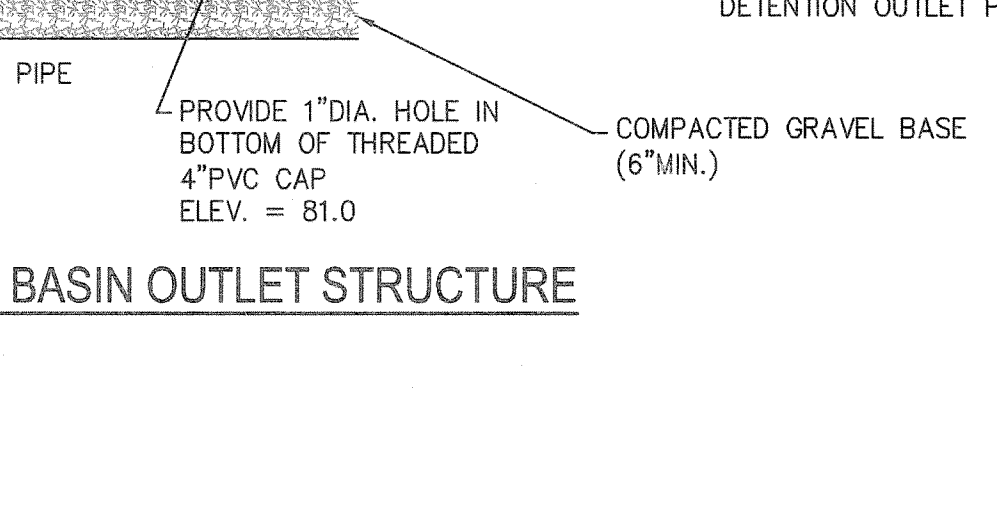
**EXTENDED DETENTION ORIFICE PLATE "B" DETAIL**



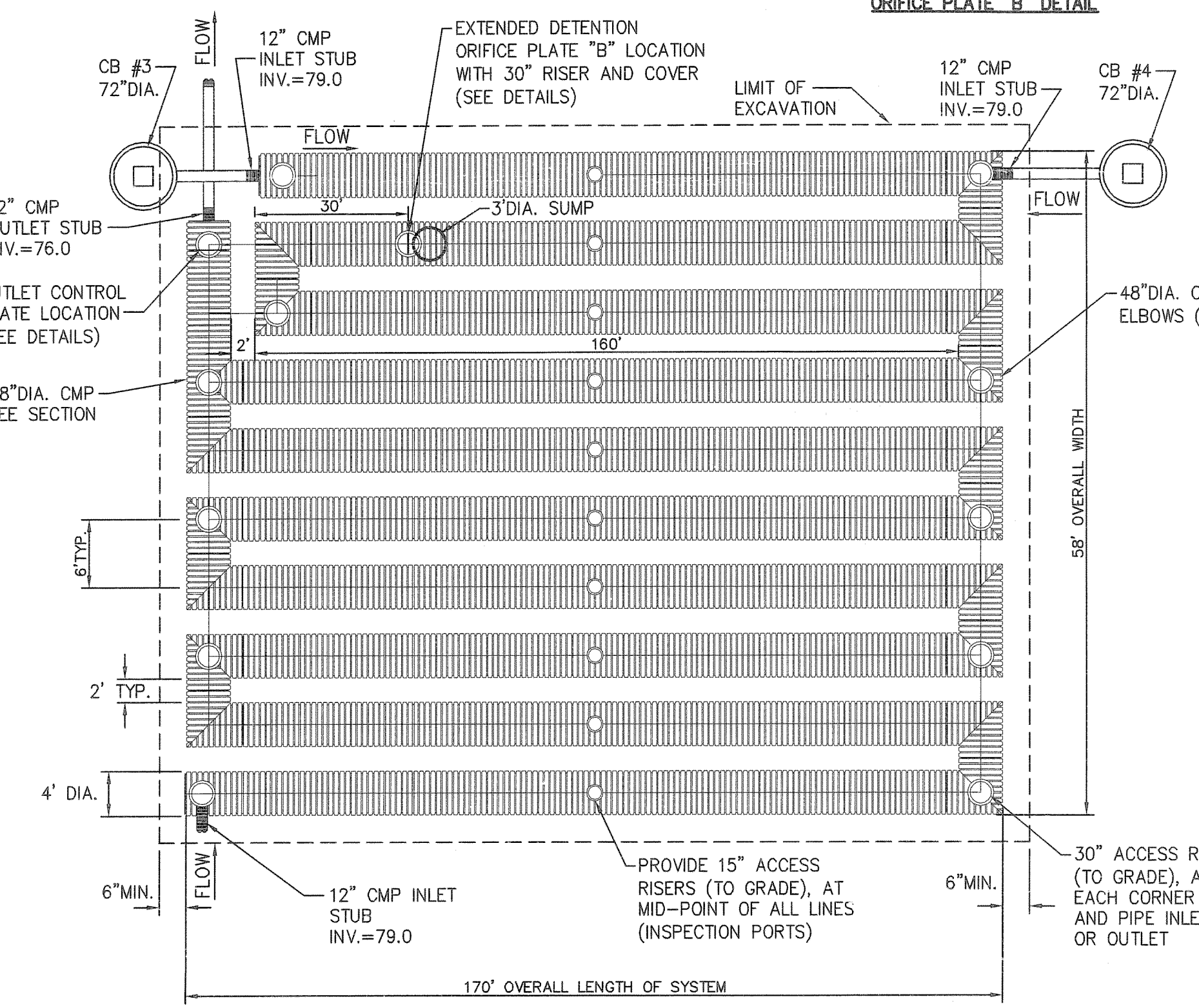
**EXTENDED DETENTION ORIFICE DETAIL FOR UNDERGROUND STORAGE SYSTEMS**



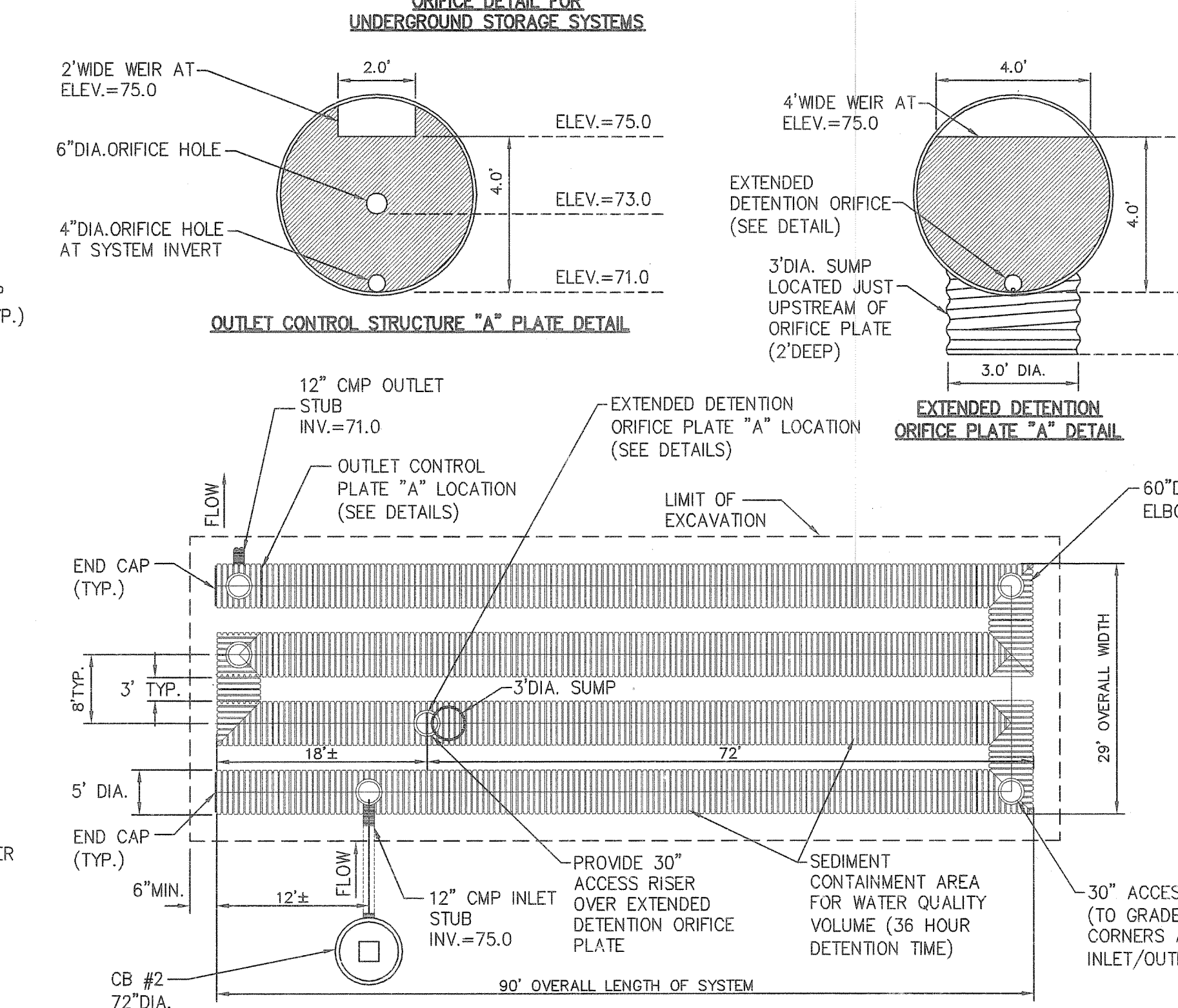
**OUTLET CONTROL STRUCTURE "A" PLATE DETAIL**



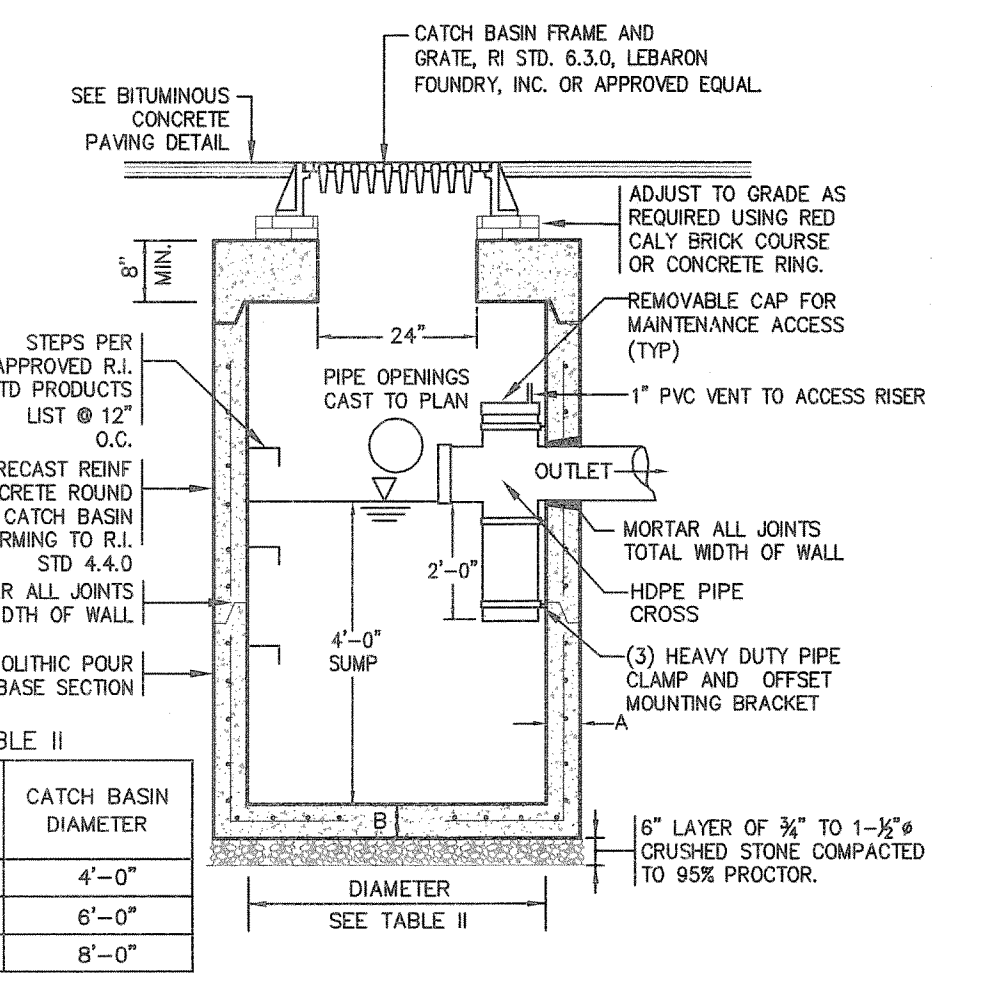
**EXTENDED DETENTION ORIFICE PLATE "A" DETAIL**



**UNDERGROUND DRAINAGE RETENTION SYSTEM "B" PLAN VIEW**  
NOT TO SCALE



**UNDERGROUND DRAINAGE RETENTION SYSTEM "A" PLAN VIEW**  
NOT TO SCALE

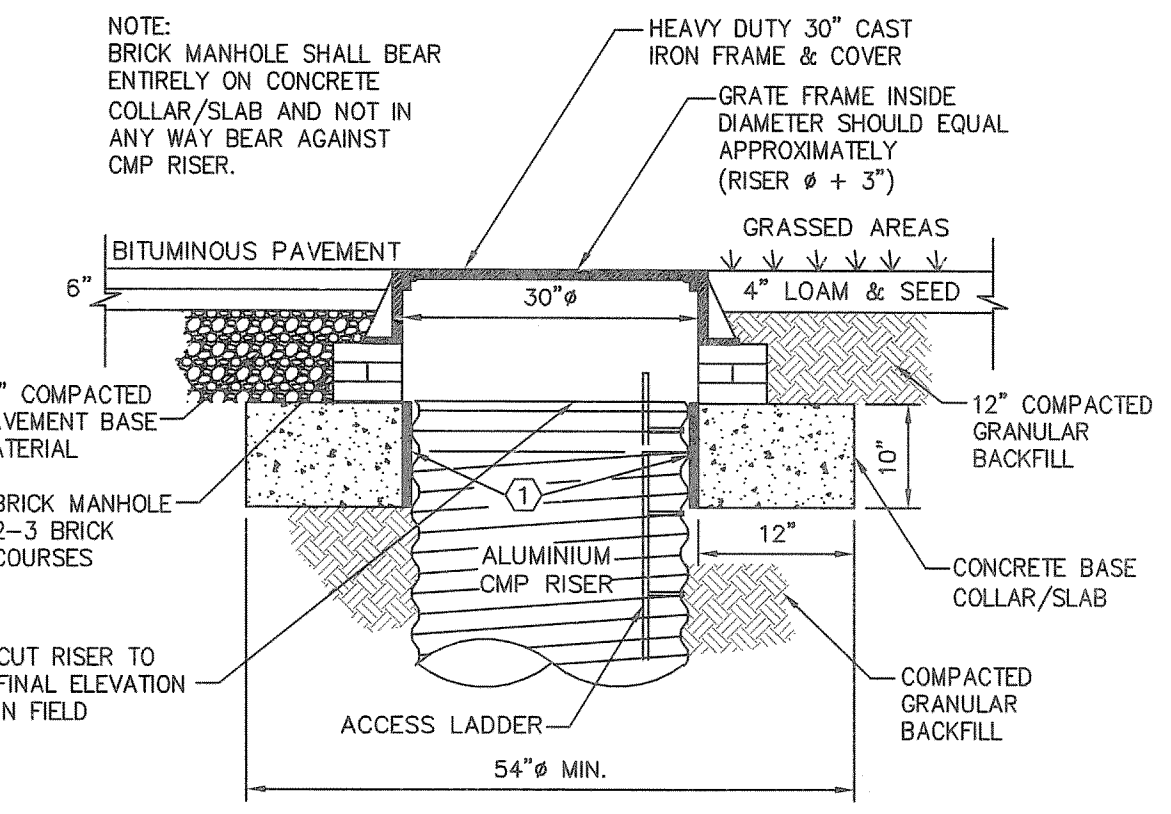


**TYPICAL DETENTION SYSTEM RISER DETAIL**  
NOT TO SCALE

OUTLET PIPE DIAMETER	CATCH BASIN DIAMETER
12"	4'-0"
18"-24"	6'-0"
30"-48"	8'-0"

CATCH BASIN DIAMETER	A	B	CIRCUMFERENTIAL STEEL REINFORCEMENT REQUIRED *
4'-0"	5"	6"	0.12 SQ. IN./LINEAL FT
5'-0"	6"	7"	0.15 SQ. IN./LINEAL FT
6'-0"	7"	8"	0.18 SQ. IN./LINEAL FT

**PRECAST CONCRETE CATCH BASIN DETAIL WITH OIL & WATER SEPARATOR**  
NOT TO SCALE

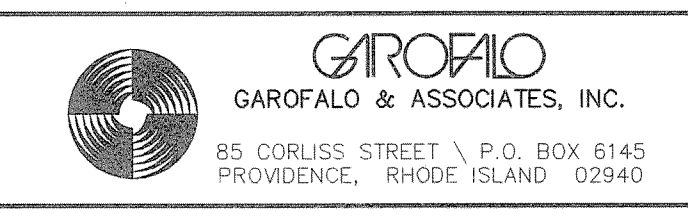


**TYPICAL DETENTION SYSTEM RISER DETAIL**  
NOT TO SCALE

NO.	DATE	BY
1	1/30/09	MNB

**RHODE ISLAND DEPARTMENT OF TRANSPORTATION**  
**WARREN AVENUE MAINTENANCE FACILITY**  
EAST PROVIDENCE, RHODE ISLAND  
**SITE DETAILS - 1**

CHECKED BY: M.W.C. DATE: 2/03/09 SCALE: NO SCALE



L:\5656-04 Warren Ave Maint. - East Providence, RI\dwg\01-Current\565604-02-Legend.dwg

