

5500-60



Andrews Survey & Engineering, Inc.
Land Surveying - Civil Engineering - Site Planning
P.O. Box 312, 104 Mendon Street
Uxbridge, Massachusetts 01569-0312
P.508-278-3897 F.508-278-2289

ZONING INFORMATION:
MAP 230, LOT 15: HC
MAP 266, LOT 6: HC
MINIMUM BUILDING SETBACKS:
FRONT: 75 FT.
REAR: 40 FT.
SIDE: 30 FT.

ZONING INFORMATION:
MAP 230, LOT 15: R-40
MINIMUM LOT AREA: 40,000
MINIMUM LOT FRONTAGE: 150 FT.
MINIMUM BUILDING SETBACKS:
FRONT: 40 FT.
REAR: 40 FT.
SIDE: 40 FT.

ASSESSORS INFORMATION:
MAP 230 LOT 15 & MAP 266 LOT 6

DEED REFERENCES:
BOOK 118 PAGE 658
BOOK 184 PAGE 527
BOOK 186 PAGE 85
BOOK 192 PAGE 55

LEGEND

EXISTING WETLAND FLAG	▲
EXISTING CONTOUR	---455---
PROPOSED CONTOUR	—456—
PROPOSED SHRUB	⊗
TREE LINE	⊕

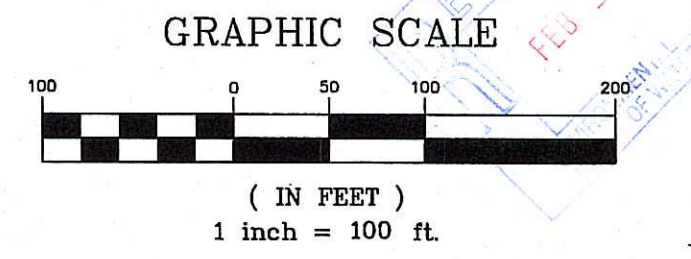
DEPARTMENT OF ENVIRONMENTAL MANAGEMENT
OFFICE OF WATER RESOURCES
FRESHWATER WETLANDS PROGRAM
APPROVED WITH CONDITIONS
AS SPECIFIED IN THE LETTER OF APPROVAL
DATED MAR 20 2009 FILE # 09-0035
NO CHANGES ALLOWED WITHOUT PROFESSIONAL ENGINEER'S
APPROVED PLANS MUST BE AT CONSTRUCTION SITE
Nancy L. Fleeman

EXISTING TOPOGRAPHY TAKEN FROM AERIAL
PHOTOGRAMMETRY DATED DECEMBER 29, 2000 AND
FROM GOLF COURSE PLANS BY HM DESIGN GROUP.

REVISIONS

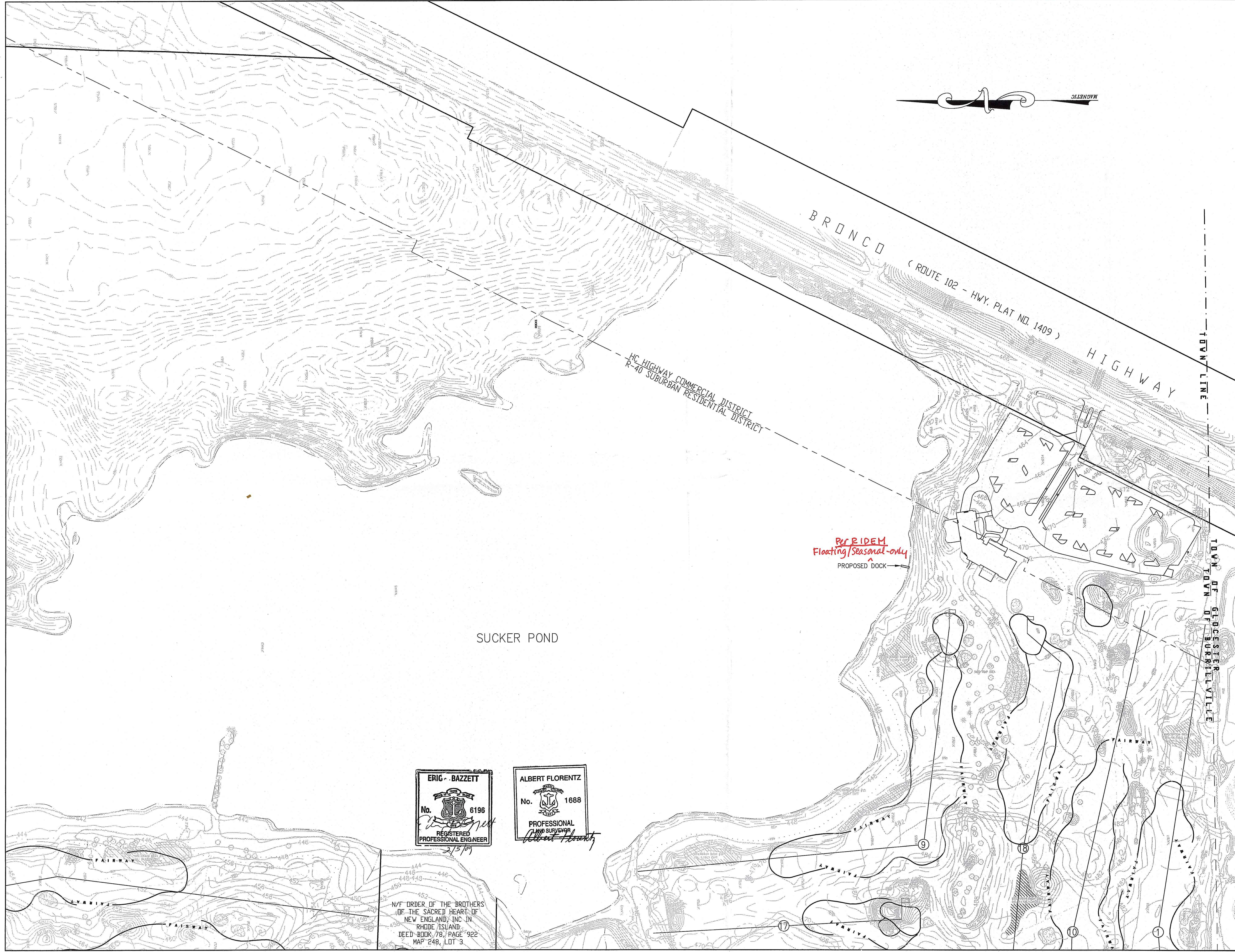
DATE	DESCRIPTION
01-12-09	PER DEM COMMENTS

SITE PLAN
CRYSTAL LAKE COUNTRY CLUB
BURRILLVILLE, RHODE ISLAND
GRADING & LAYOUT PLAN
PREPARED FOR
BLISS GOLF INVESTORS
SCALE: 1"=100' DECEMBER 23, 2008



L-3504

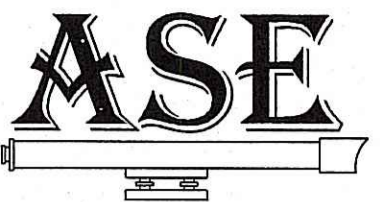
DRAWN BY:	TRB	DATE:	DECEMBER 23, 2008
CHECKED BY:	BA, JRA	DRAWING NO.:	2000-490_DOCK-OVERVIEW.dwg
PROJECT NO.:	2000-490	SHEET	1 OF 2



ERIC - BAZZETT
No. 6196
REGISTERED PROFESSIONAL ENGINEER

ALBERT FLORENTZ
No. 1688
PROFESSIONAL LAND SURVEYOR

N/F ORDER OF THE BROTHERS
OF THE SACRED HEART OF
NEW ENGLAND, INC. IN
RHODE ISLAND
DEED BOOK 78, PAGE 922
MAP 248, LOT 3



Andrews Survey & Engineering, Inc.
 Land Surveying - Civil Engineering - Site Planning
 P.O. Box 312, 104 Mendon Street
 Uxbridge, Massachusetts 01569-0312
 P.508-278-3897 F.508-278-2289

ZONING INFORMATION:
 MAP 230, LOT 15: HC
 MAP 266, LOT 6: HC
 MINIMUM BUILDING SETBACKS:
 FRONT: 75 FT.
 REAR: 40 FT.
 SIDE: 30 FT.

ZONING INFORMATION:
 MAP 230, LOT 15: R-40
 MINIMUM LOT AREA: 40,000
 MINIMUM LOT FRONTAGE: 150 FT.
 MINIMUM BUILDING SETBACKS:
 FRONT: 40 FT.
 REAR: 40 FT.
 SIDE: 40 FT.

ASSESSORS INFORMATION:
 MAP 230 LOT 15 & MAP 266 LOT 6
 PLAN BOOK 9, PAGE 20
 PLAN BOOK 14, PAGE 14
 PLAN BOOK 23, PAGE 13

DEED REFERENCES:
 BOOK 118 PAGE 658
 BOOK 184 PAGE 527
 BOOK 186 PAGE 85
 BOOK 192 PAGE 55

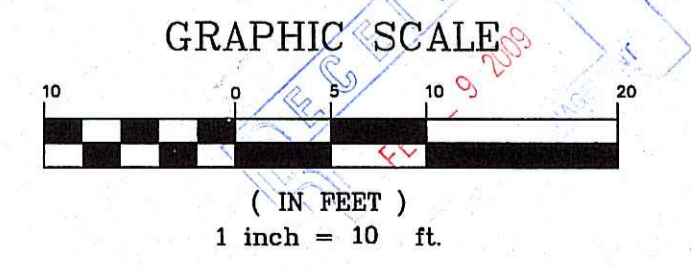
LEGEND	
EXISTING WETLAND FLAG	△
EXISTING CONTOUR	--- 456 ---
PROPOSED CONTOUR	--- 456 ---
MOUNTAIN LAUREL	☼
TREE LINE	~~~~~

DEPARTMENT OF ENVIRONMENTAL MANAGEMENT
 OFFICE OF WATER RESOURCES
 FRESHWATER WETLANDS PROGRAM
 APPROVED WITH CONDITIONS
 AS SPECIFIED IN THE LETTER OF APPROVAL
 DATED MAR 20 2008 FILE # 09-0035
 NO CHANGES ALLOWED WITHOUT PRIOR APPROVAL
 APPROVED PLANS MUST BE AT CONSTRUCTION SITE
 Nancy L. Freeman

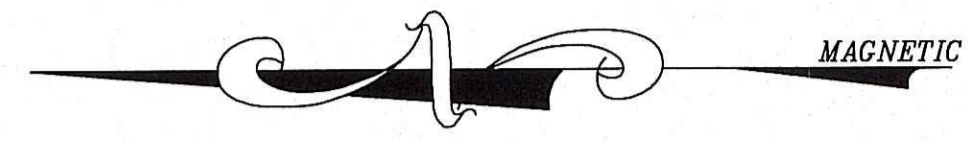
EXISTING TOPOGRAPHY TAKEN FROM AERIAL
 PHOTOGRAMMETRY DATED DECEMBER 29, 2000 AND
 FROM GOLF COURSE PLANS BY HM DESIGN GROUP.

REVISIONS	
DATE	DESCRIPTION
01-12-09	PER DEM COMMENTS

SITE PLAN
 CRYSTAL LAKE COUNTRY CLUB
 BURRILLVILLE, RHODE ISLAND
 GRADING & LAYOUT PLAN
 PREPARED FOR
 BLISS GOLF INVESTORS
 SCALE: 1"=10' DECEMBER 23, 2008



DRAWN BY:	TRB	DATE:	DECEMBER 23, 2008
CHECKED BY:	BA, JRA	DRAWING NO.:	2000-490_DOCK-OVERVIEW.dwg
PROJECT NO.:	2000-490	SHEET	2 OF 2



SUCKER POND

EXISTING EDGE OF WATER LINE
 ELEVATION: 441.30 (01-2001)

PLANT LIST

KEY	BOTANICAL NAME	COMMON NAME	SIZE	SPACING	QUANTITY
KLT	KALMIA LATIFOLIA	MOUNTAIN LAUREL	3'-4' HT.	6' O.C.	18

PROP DOCK
 Floating/Seasonal-only
 per RIDEM

Revised Limit of Disturbance
 per RIDEM to enclose all
 work proposed.

