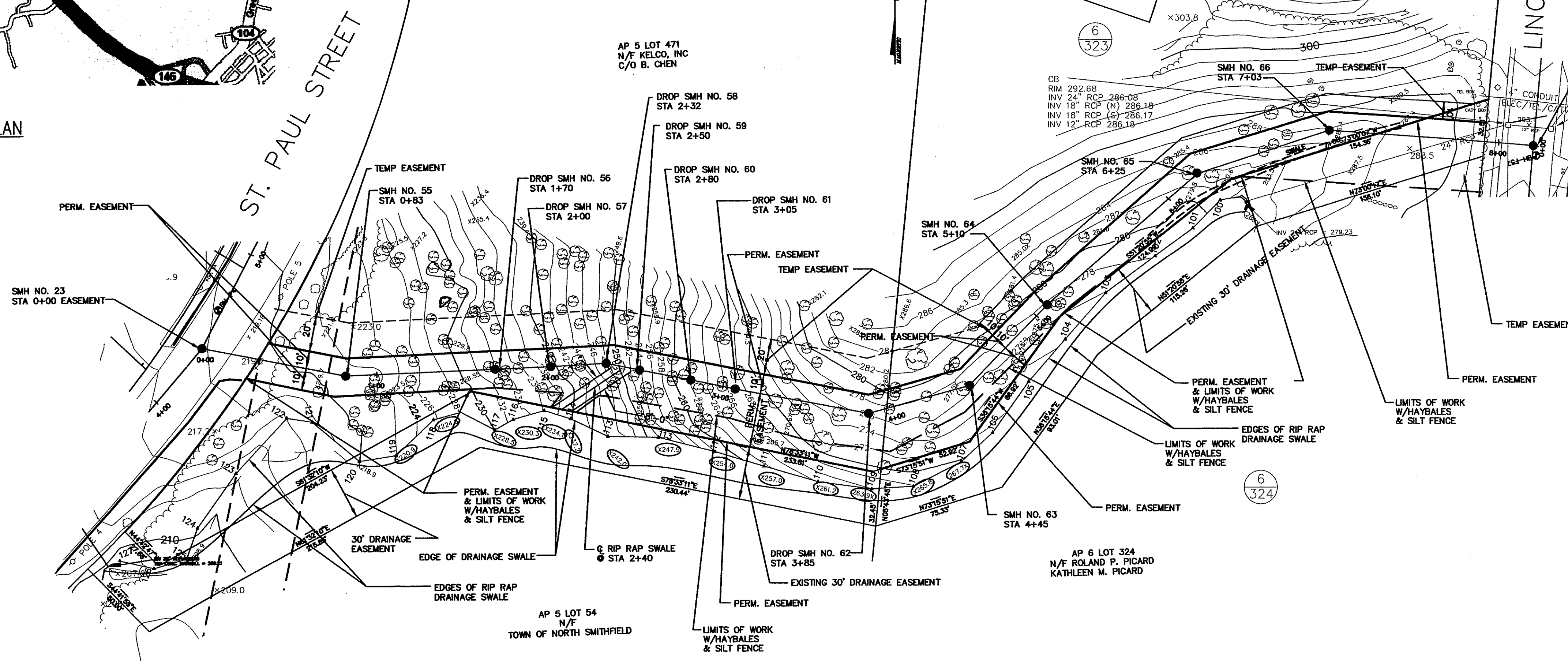


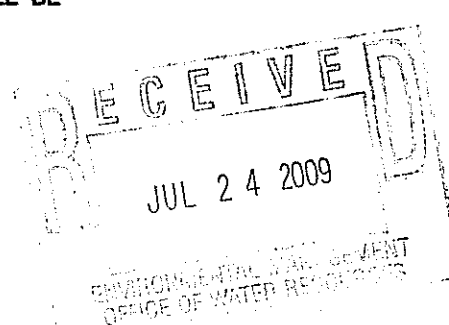
LOCUS PLAN
N.T.S.



DEPARTMENT OF ENVIRONMENTAL MANAGEMENT
OFFICE OF WATER RESOURCES
FRESHWATER WETLANDS PROGRAM
APPROVED WITH CONDITIONS
AS SPECIFIED IN THE LETTER OF APPROVAL
DATED AUG 07 2009 FILE # 09-0095
NO CHANGES ALLOWED WITHOUT PRIOR APPROVAL
APPROVED PLANS MUST BE AT CONSTRUCTION SITE

Charles A. Haber

1. PLANIMETRIC & TOPOGRAPHIC MAPPING BY MARC N. NYBERG & ASSOCIATES (CLASS 1 SURVEY)
HORIZONTAL DATUM = NAD83 & VERTICAL DATUM = NAVD1988
 2. WETLAND FLAGGING BY APPLIED BIO-SYSTEMS
 3. STOCK PILING OF EXCAVATED MATERIAL SHALL BE WITHIN THE LIMITS OF WORK
 4. DEWATERING BASINS SHALL BE LOCATED WITHIN THE LIMITS OF WORK
- ⊕ SWALE ELEVATION



PLAN
SCALE: 1"=40'

1	RH	07/09	RIDEM REVIEW COMMENTS
NO.	BY:	DATE:	REMARKS:
CADD FILE:			DATE PRINTED:

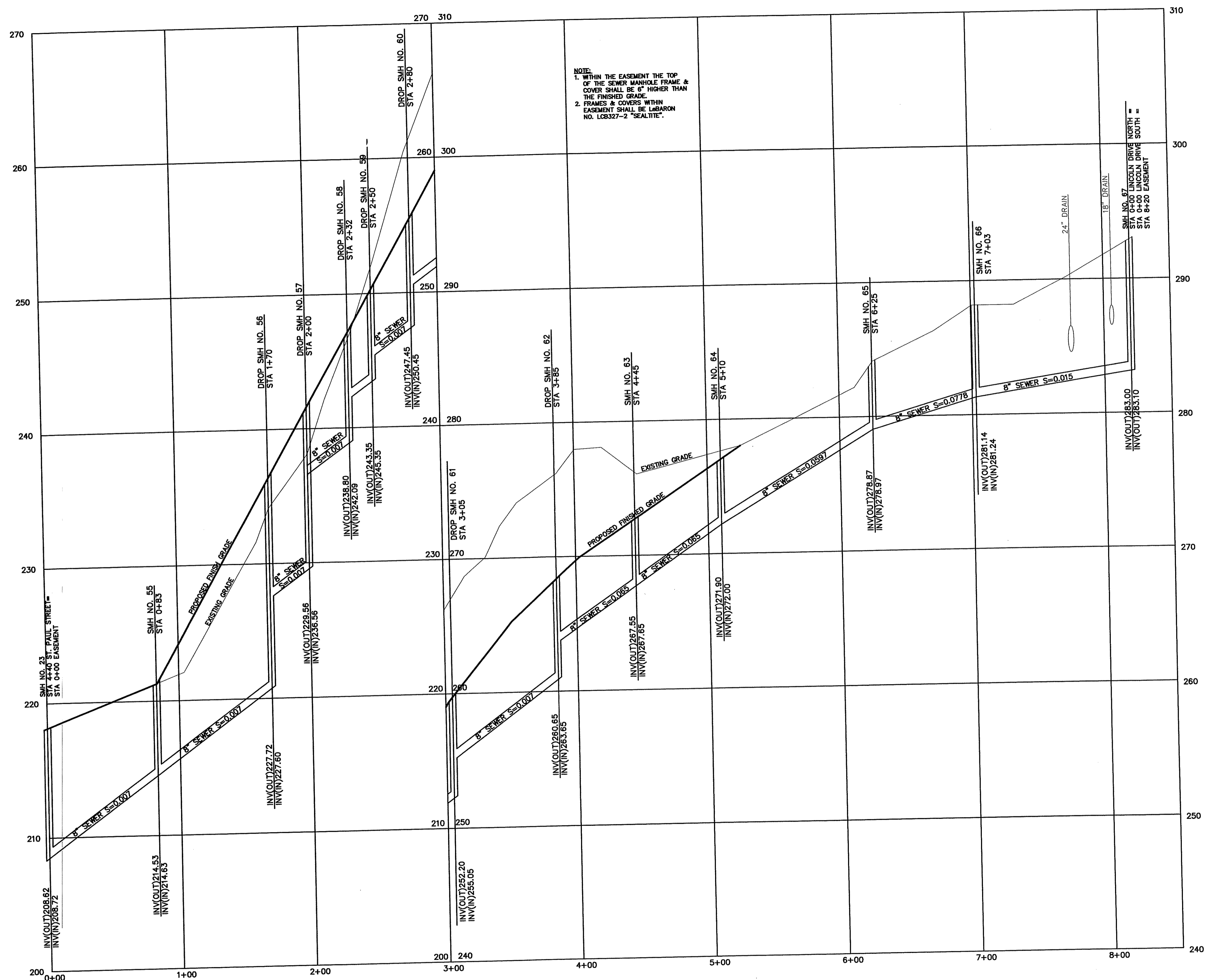
DESIGNED BY: RMH
DRAWN BY: CJB
CHECKED BY: JJC
SCALE: AS SHOWN
DATE: FEB 2009

JAMES J. GEREMIA & ASSOCIATES, INC.
CONSULTING ENVIRONMENTAL ENGINEERS & SCIENTISTS
272 W. Exchange Street Suite 201 Providence, RI 02903-1025
Phone: 401-454-7000 Fax: 401-454-7415

PHASE II
NORTH SMITHFIELD WASTEWATER
COLLECTION SYSTEM IMPROVEMENTS
PREPARED FOR
TOWN OF NORTH SMITHFIELD

PLAN
EASEMENT STA 0+00 TO STA 8+20
NORTH SMITHFIELD, RI

SHEET NO.
1



NOTE:
 1. WITHIN THE EASEMENT THE TOP OF THE SEWER MANHOLE FRAME & COVER SHALL BE 6" HIGHER THAN THE FINISHED GRADE.
 2. FRAMES & COVERS WITHIN EASEMENT SHALL BE LABARON NO. L08327-2 "SEALITE".

DEPARTMENT OF ENVIRONMENTAL MANAGEMENT
 OFFICE OF WATER RESOURCES
 FRESHWATER WETLANDS PROGRAM
 APPROVED WITH CONDITIONS
 AS SPECIFIED IN THE LETTER OF APPROVAL
 DATED AUG 07 2009 FILE # 09-095
 NO CHANGES ALLOWED WITHOUT PRIOR APPROVAL
 APPROVED PLANS MUST BE AT CONSTRUCTION SITE

Charles R. Harte

RECEIVED
 JUL 24 2009
 DEPARTMENT OF ENVIRONMENTAL MANAGEMENT
 OFFICE OF WATER RESOURCES

PROFILE
 SCALE: 1"=40' HORIZ.
 1"=4' VERT.

1	RH	07/09	RIDEM REVIEW COMMENTS
NO.:	BY:	DATE:	REMARKS:
CADD FILE:			DATE PRINTED:

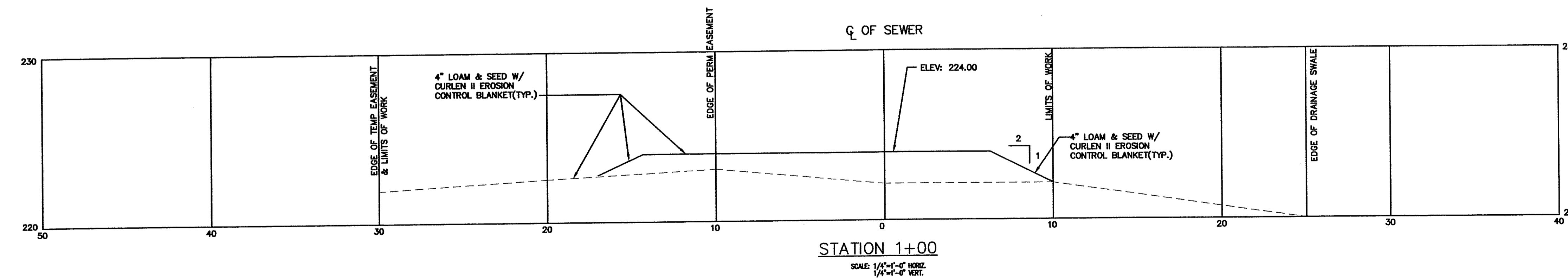
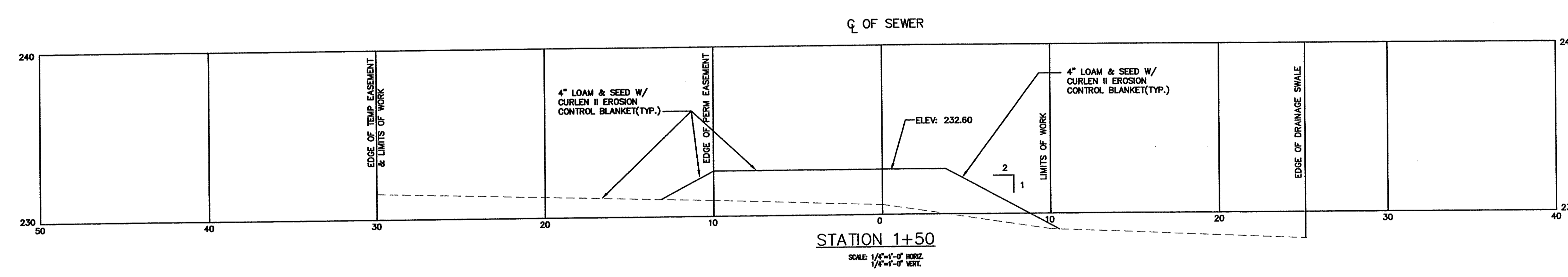
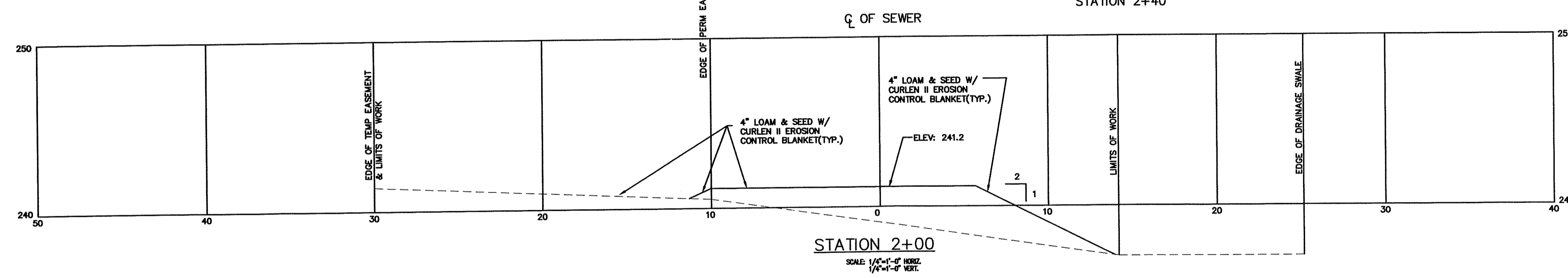
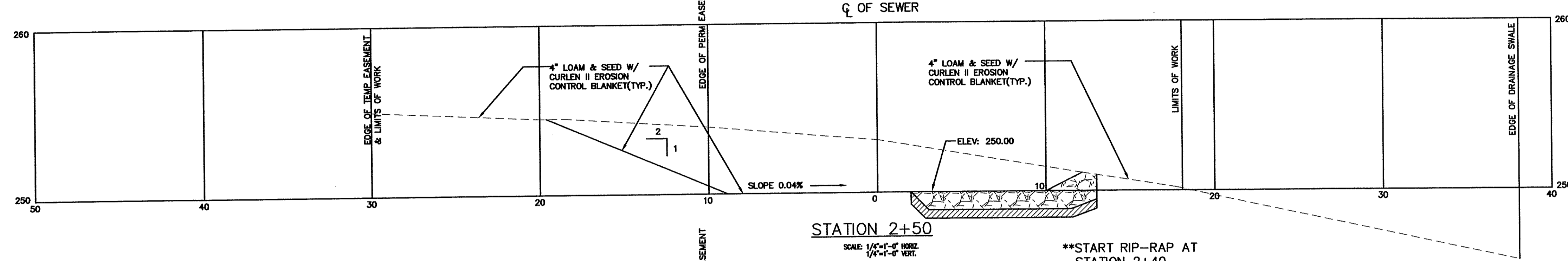
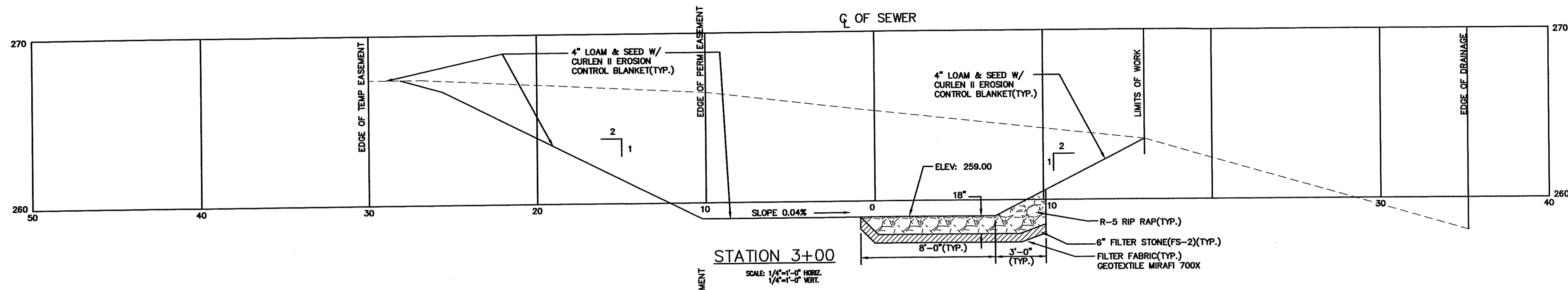
DESIGNED BY: RMH
 DRAWN BY: CJB
 CHECKED BY: JJG
 SCALE: AS SHOWN
 DATE: FEB 2009

JAMES J. GEREMIA & ASSOCIATES, INC.
 CONSULTING ENVIRONMENTAL ENGINEERS & SCIENTISTS
 272 W. Exchange Street Suite 201 Providence, RI 02903-1025
 Phone: 401-454-7000 Fax: 401-454-7415

PHASE II
NORTH SMITHFIELD WASTEWATER
COLLECTION SYSTEM IMPROVEMENTS
 PREPARED FOR
TOWN OF NORTH SMITHFIELD

PROFILE
EASEMENT STA 0+00 TO STA 8+20
NORTH SMITHFIELD, RI

SHEET NO.
2



DEPARTMENT OF ENVIRONMENTAL MANAGEMENT
 OFFICE OF WATER RESOURCES
 FRESHWATER WETLANDS PROGRAM
 APPROVED WITH CONDITIONS
 AS SPECIFIED IN THE LETTER OF APPROVAL
 DATED AUG 07 2009 FILE # 09-0095
 NO CHANGES ALLOWED WITHOUT PRIOR APPROVAL
 APPROVED PLANS MUST BE AT CONSTRUCTION SITE

Charles A. Haber

RECEIVED
 JUL 24 2009

NO.:	BY:	DATE:	REMARKS:
CADD FILE:			DATE PRINTED:

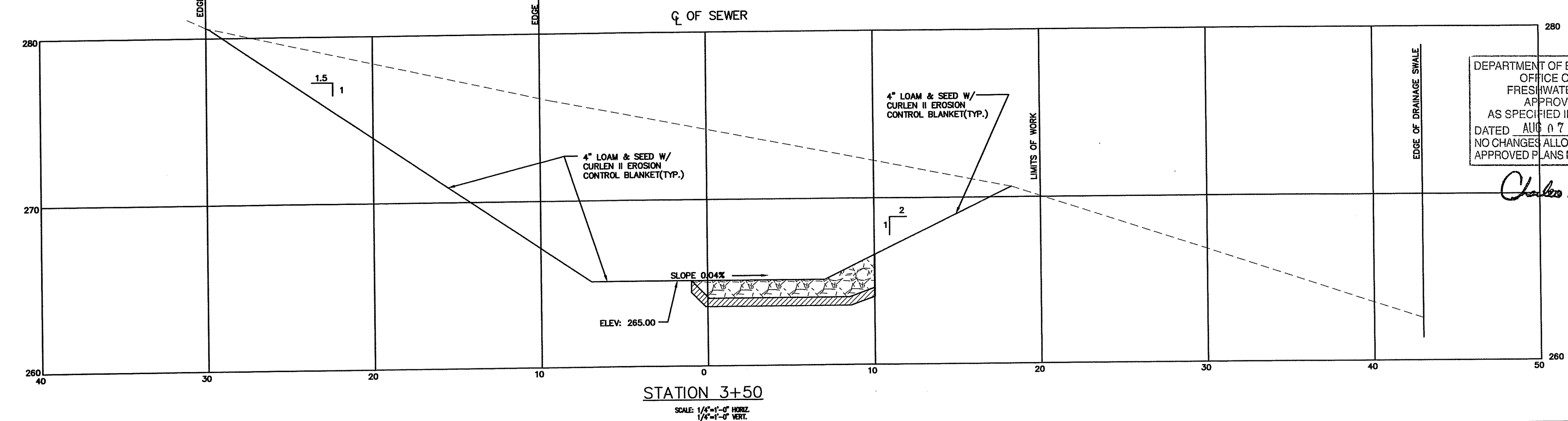
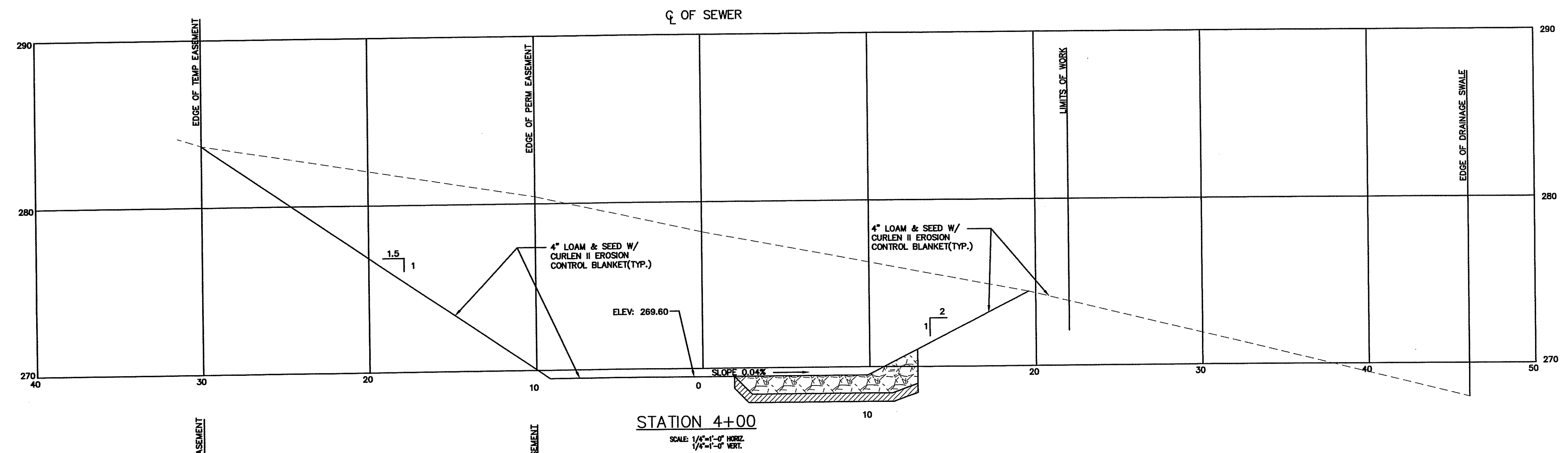
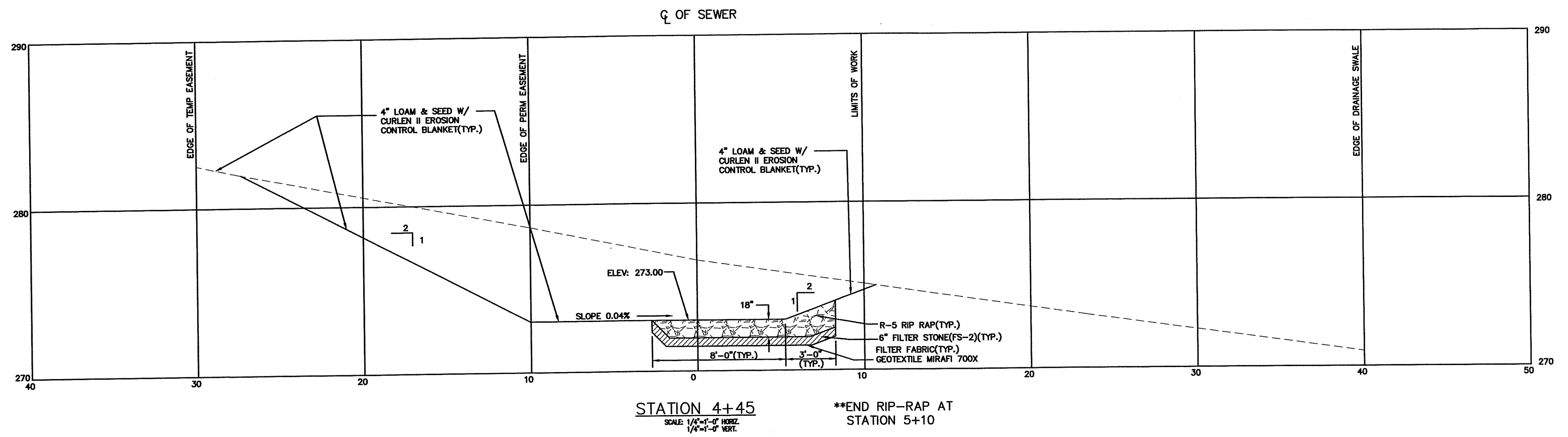
DESIGNED BY: RMH
 DRAWN BY: CJB
 CHECKED BY: JJC
 SCALE: AS SHOWN
 DATE: FEB 2009

JAMES J. GEREMIA & ASSOCIATES, INC.
 CONSULTING ENVIRONMENTAL ENGINEERS & SCIENTISTS
 272 W. Exchange Street Suite 201 Providence, RI 02903-1025
 Phone: 401-454-7000 Fax: 401-454-7415

PHASE II
 NORTH SMITHFIELD WASTEWATER
 COLLECTION SYSTEM IMPROVEMENTS
 TOWN OF NORTH SMITHFIELD

CROSS SECTIONS
 EASEMENT STA 1+00 TO STA 3+00
 NORTH SMITHFIELD, RI

SHEET NO.
3



DEPARTMENT OF ENVIRONMENTAL MANAGEMENT
 OFFICE OF WATER RESOURCES
 FRESHWATER WETLANDS PROGRAM
 APPROVED WITH CONDITIONS
 AS SPECIFIED IN THE LETTER OF APPROVAL
 DATED AUG 07 2009 FILE # 09-0095
 NO CHANGES ALLOWED WITHOUT PRIOR APPROVAL
 APPROVED PLANS MUST BE AT CONSTRUCTION SITE

Charles A. Herbert

RECEIVED
 JUL 24 2009

NO.:	BY:	DATE:	REMARKS:
CADD FILE:			DATE PRINTED:

DESIGNED BY: RMH
 DRAWN BY: CJB
 CHECKED BY: JJC
 SCALE: AS SHOWN
 DATE: FEB 2009

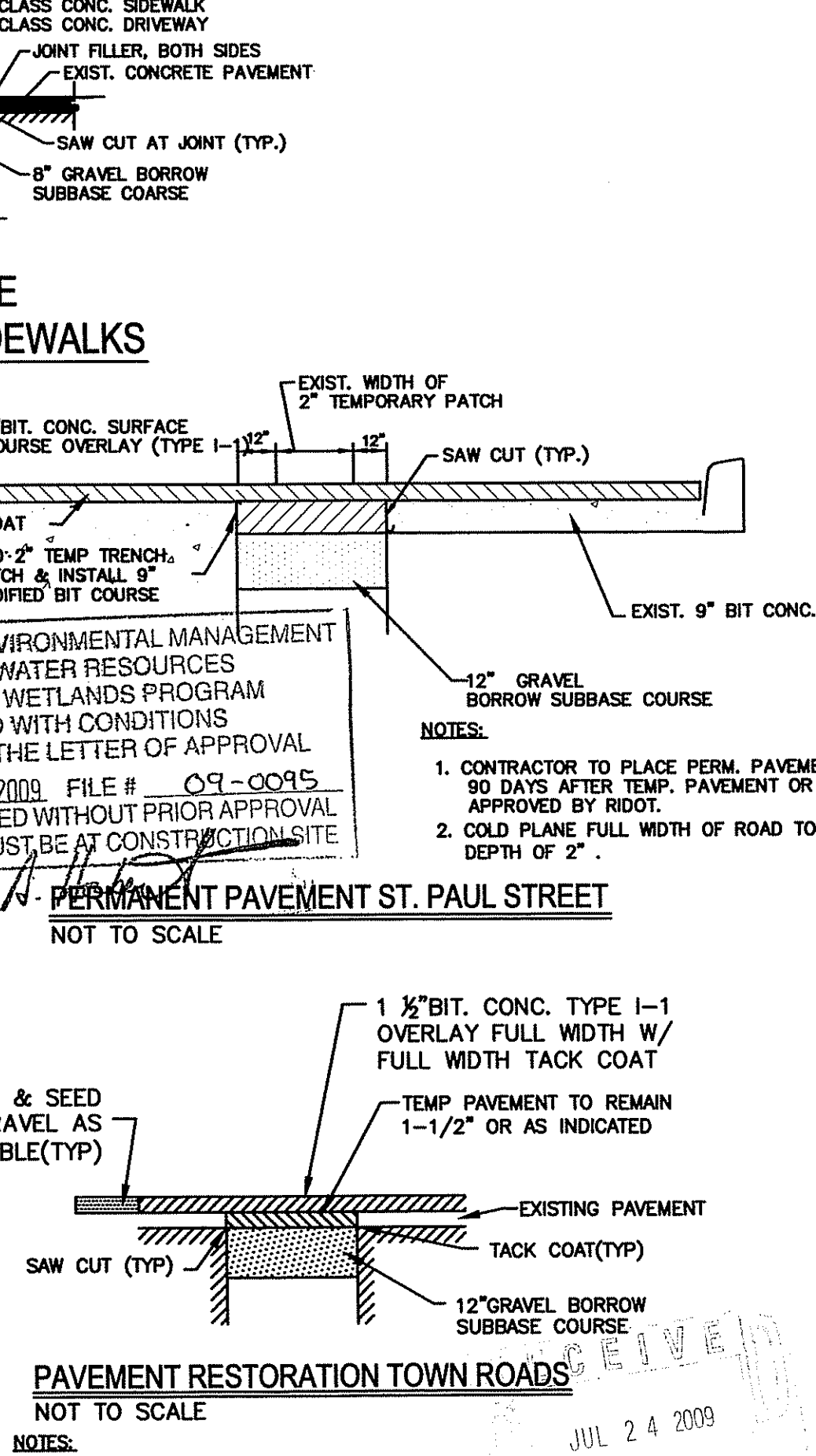
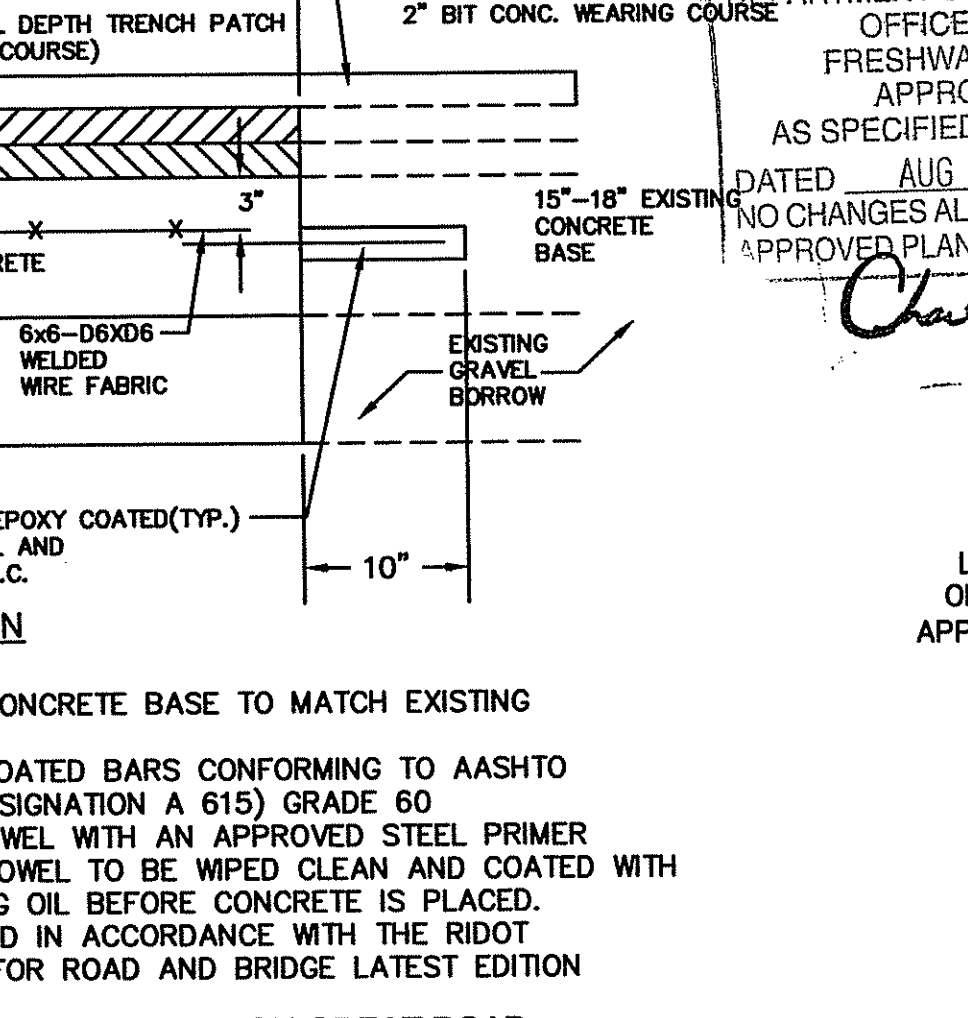
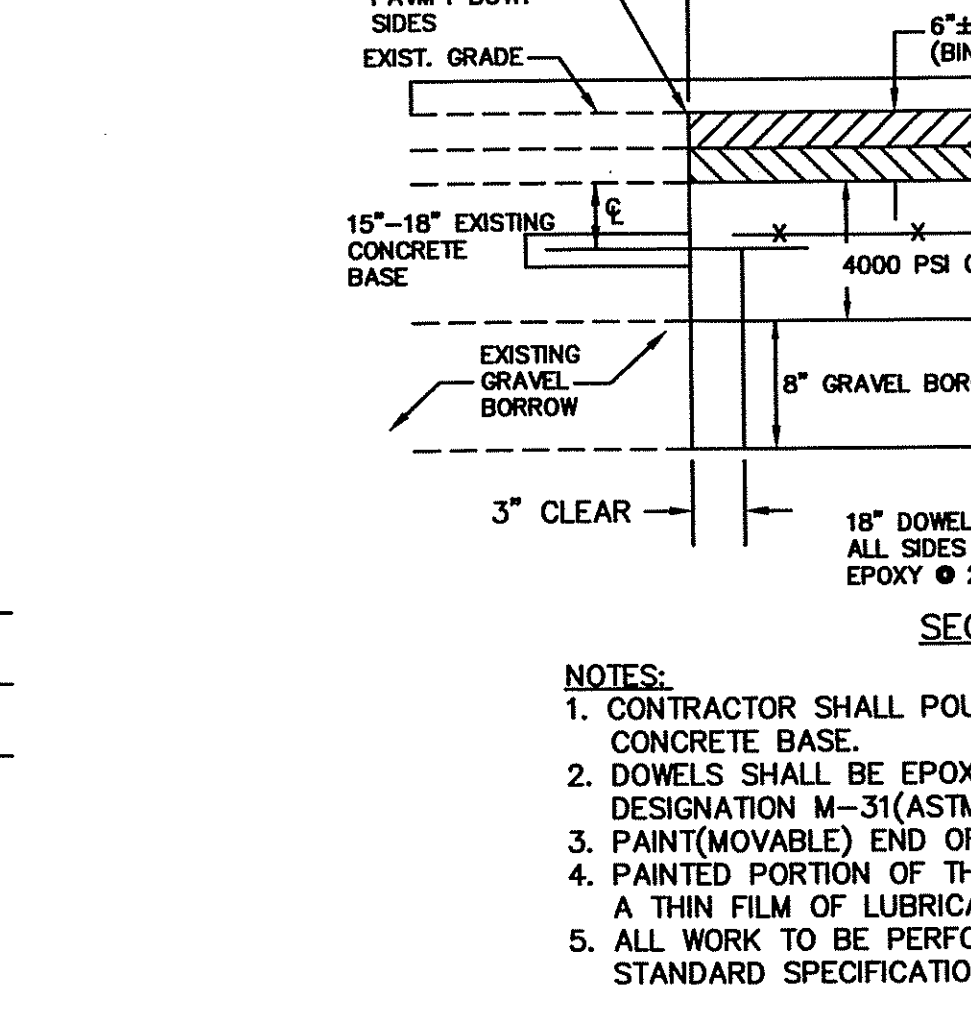
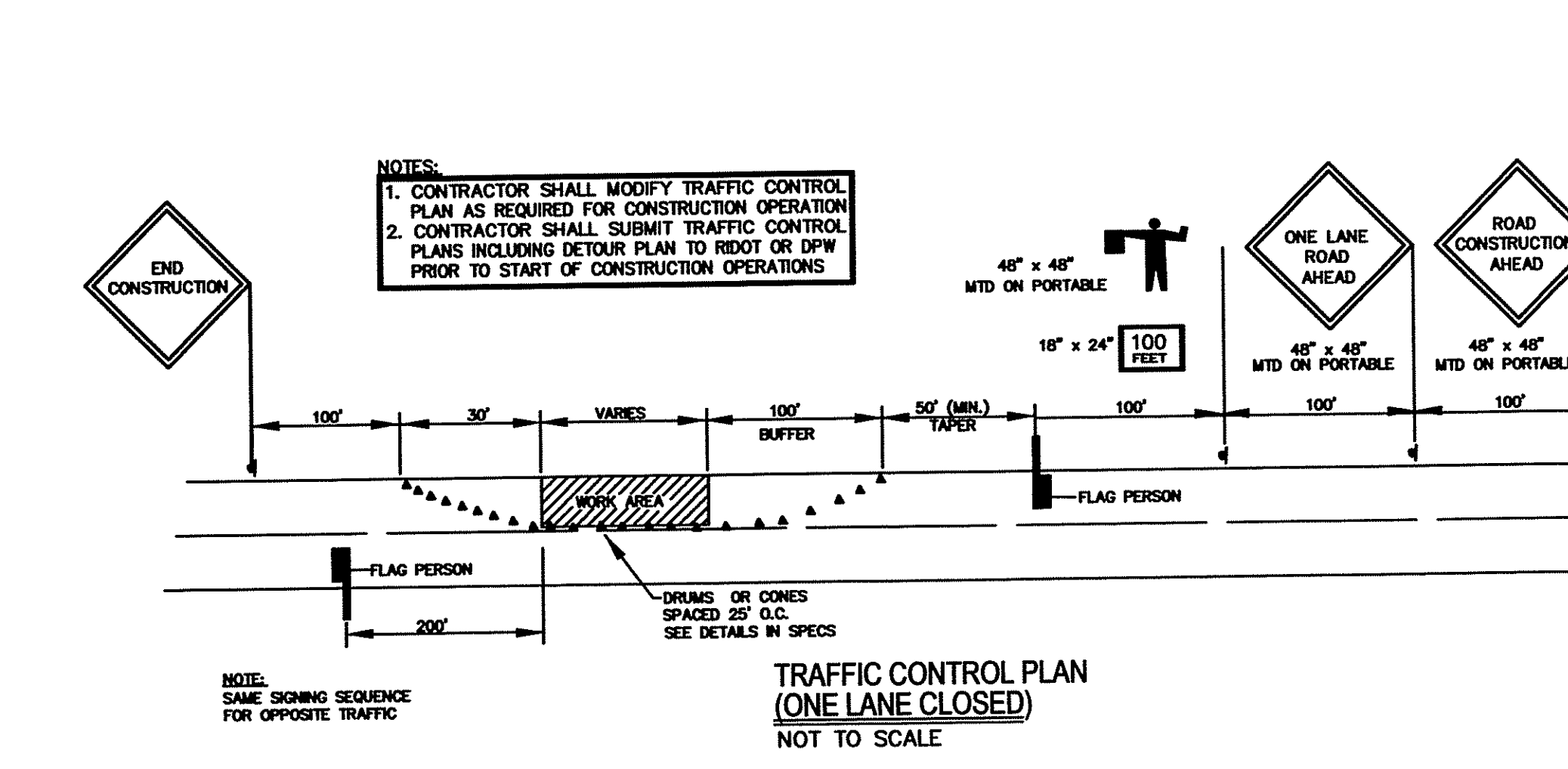
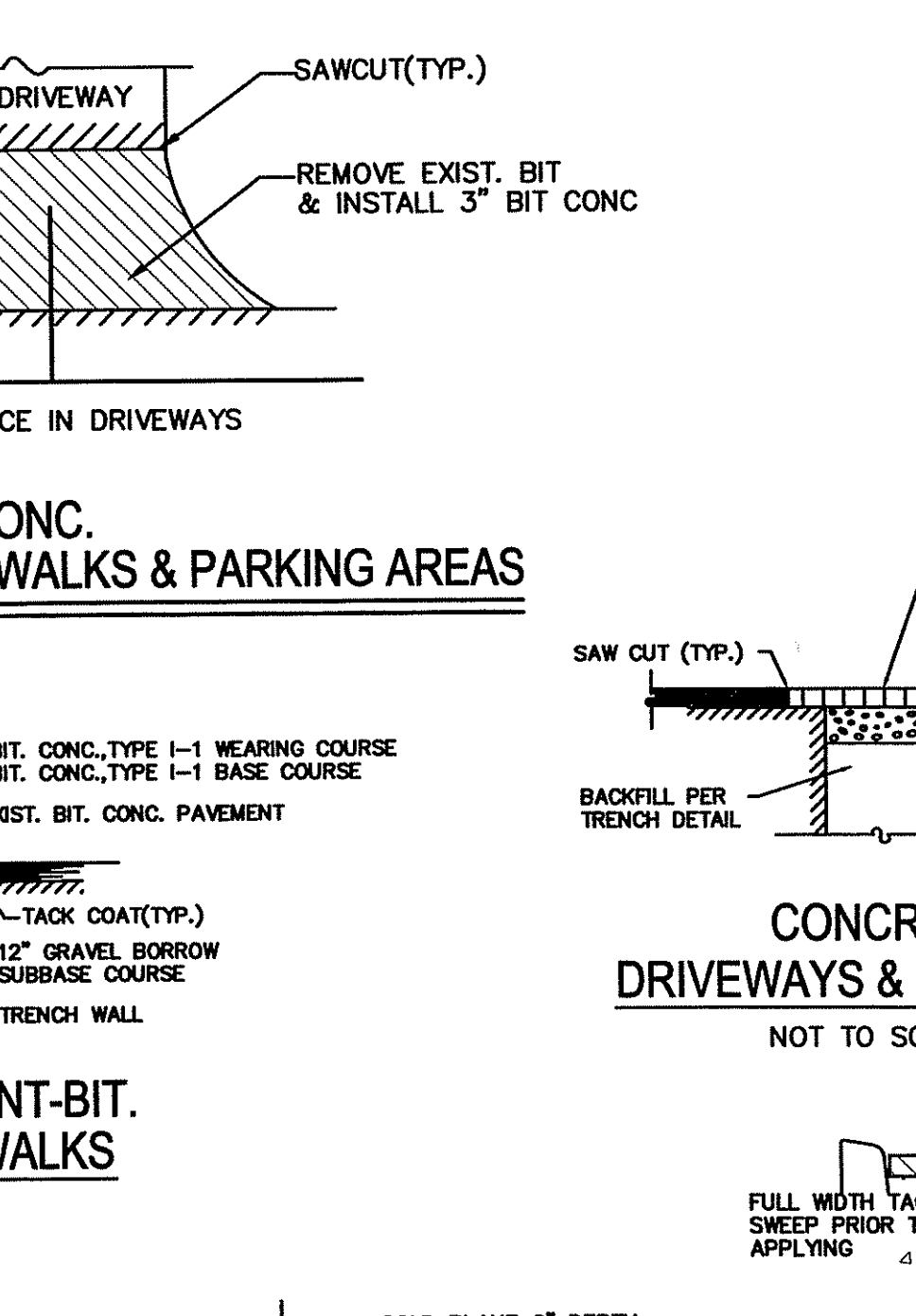
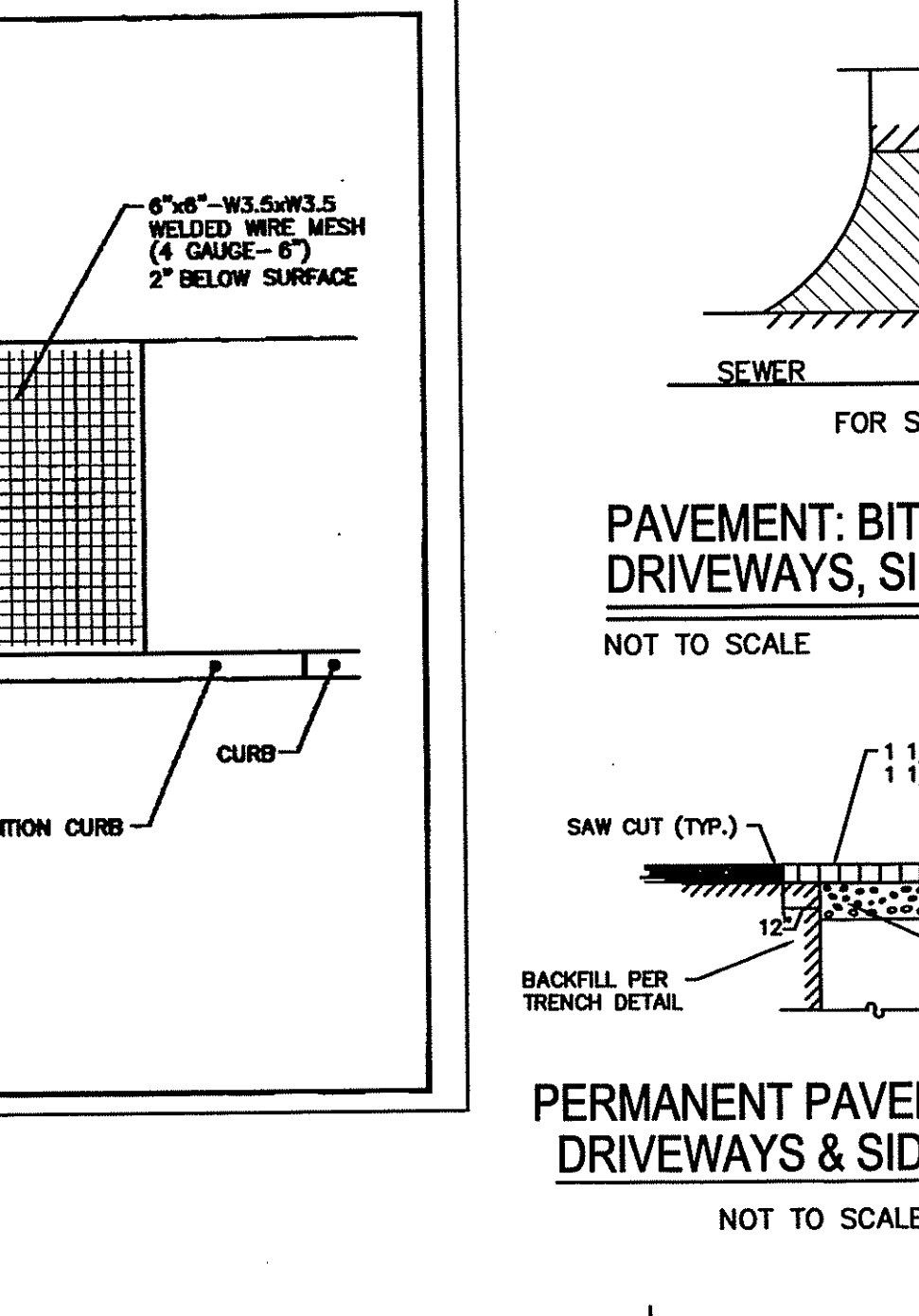
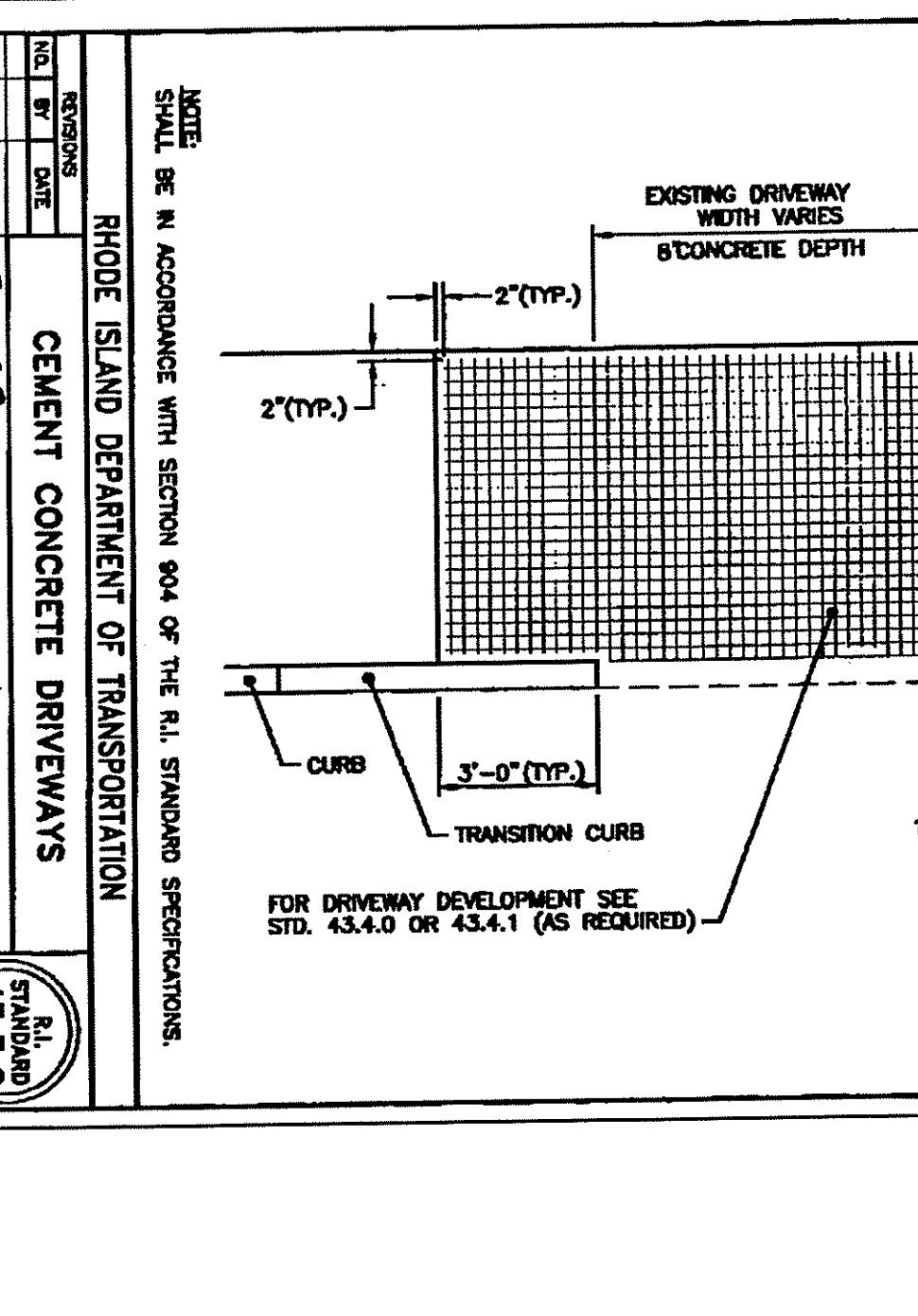
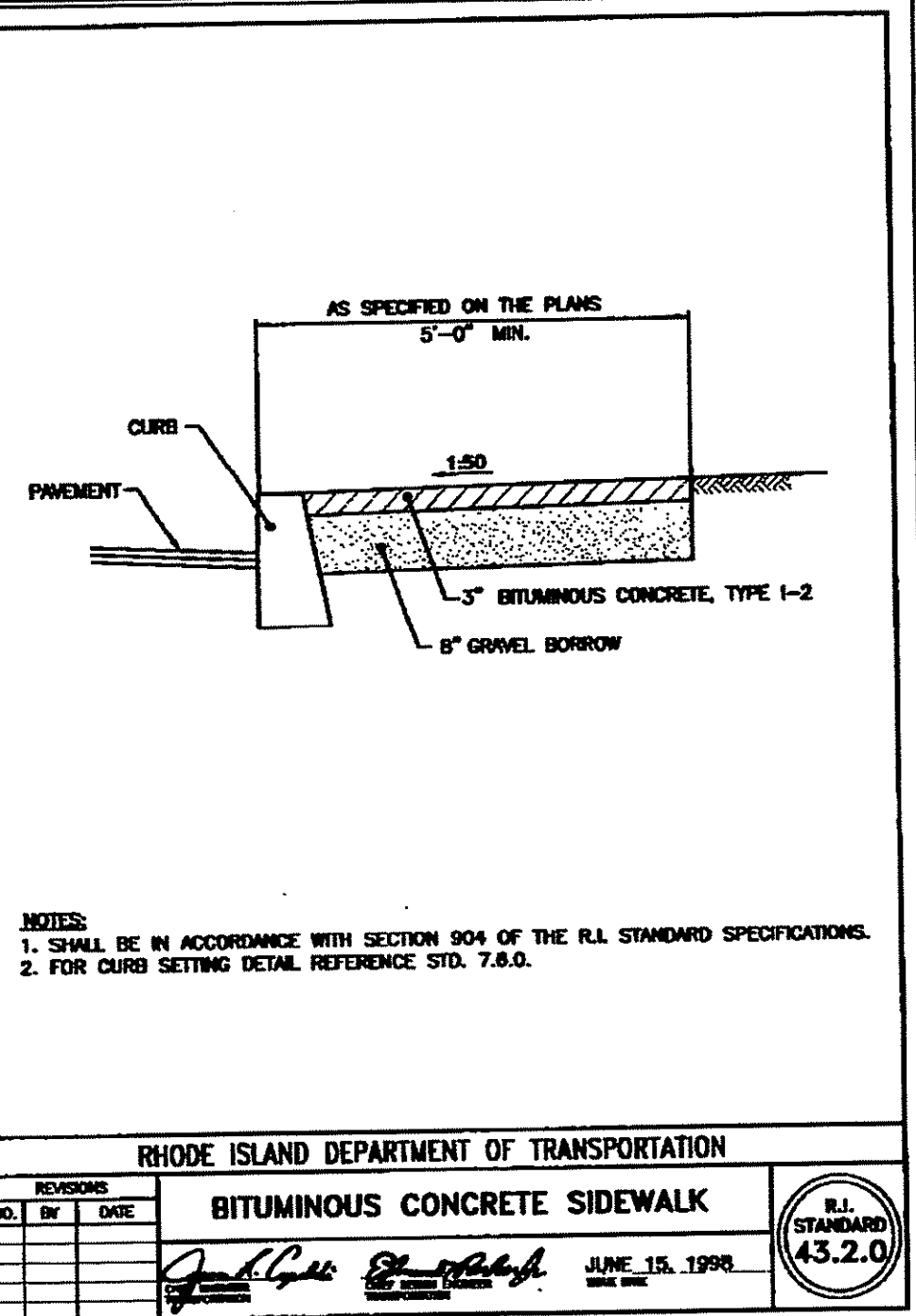
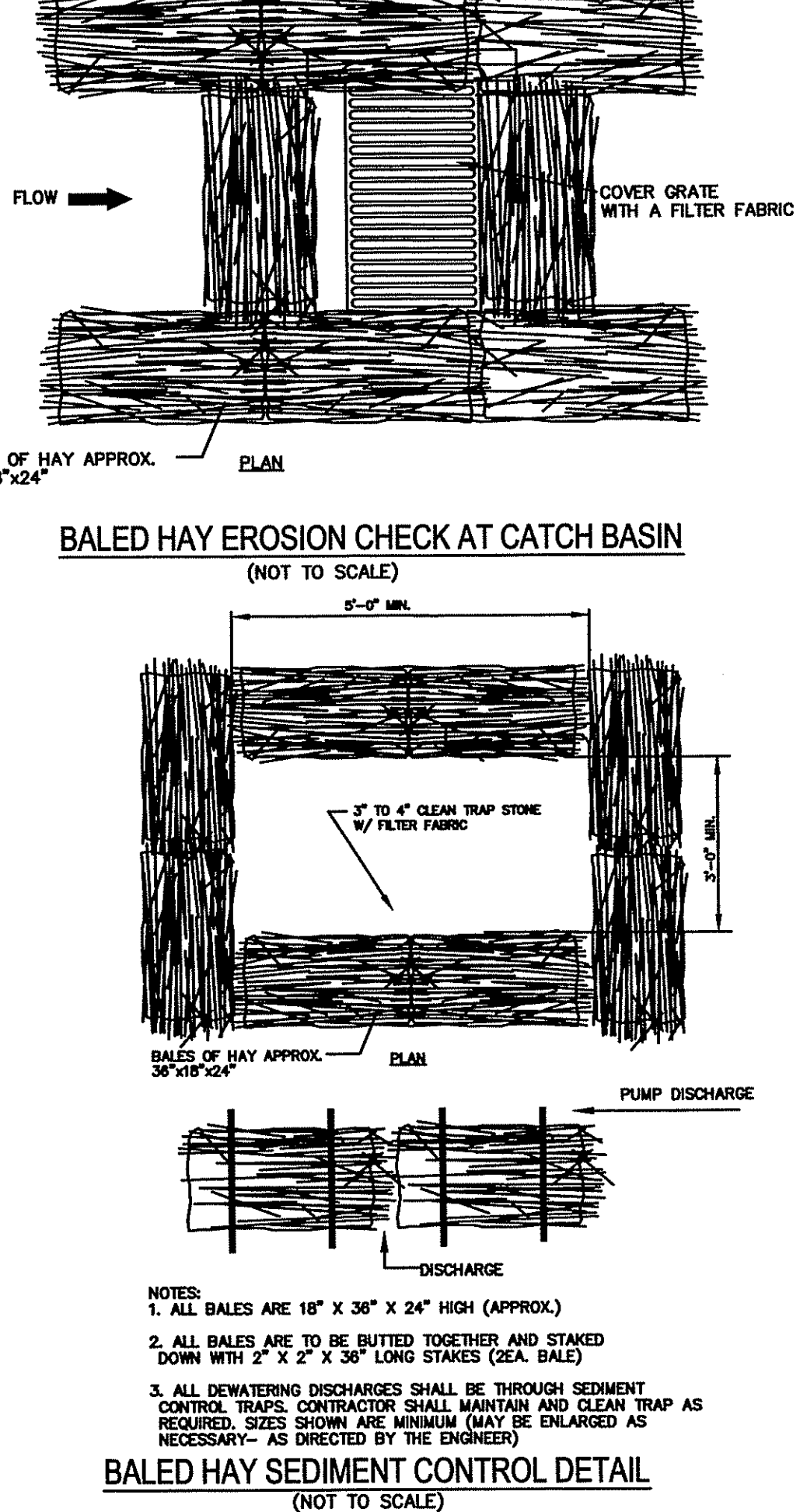
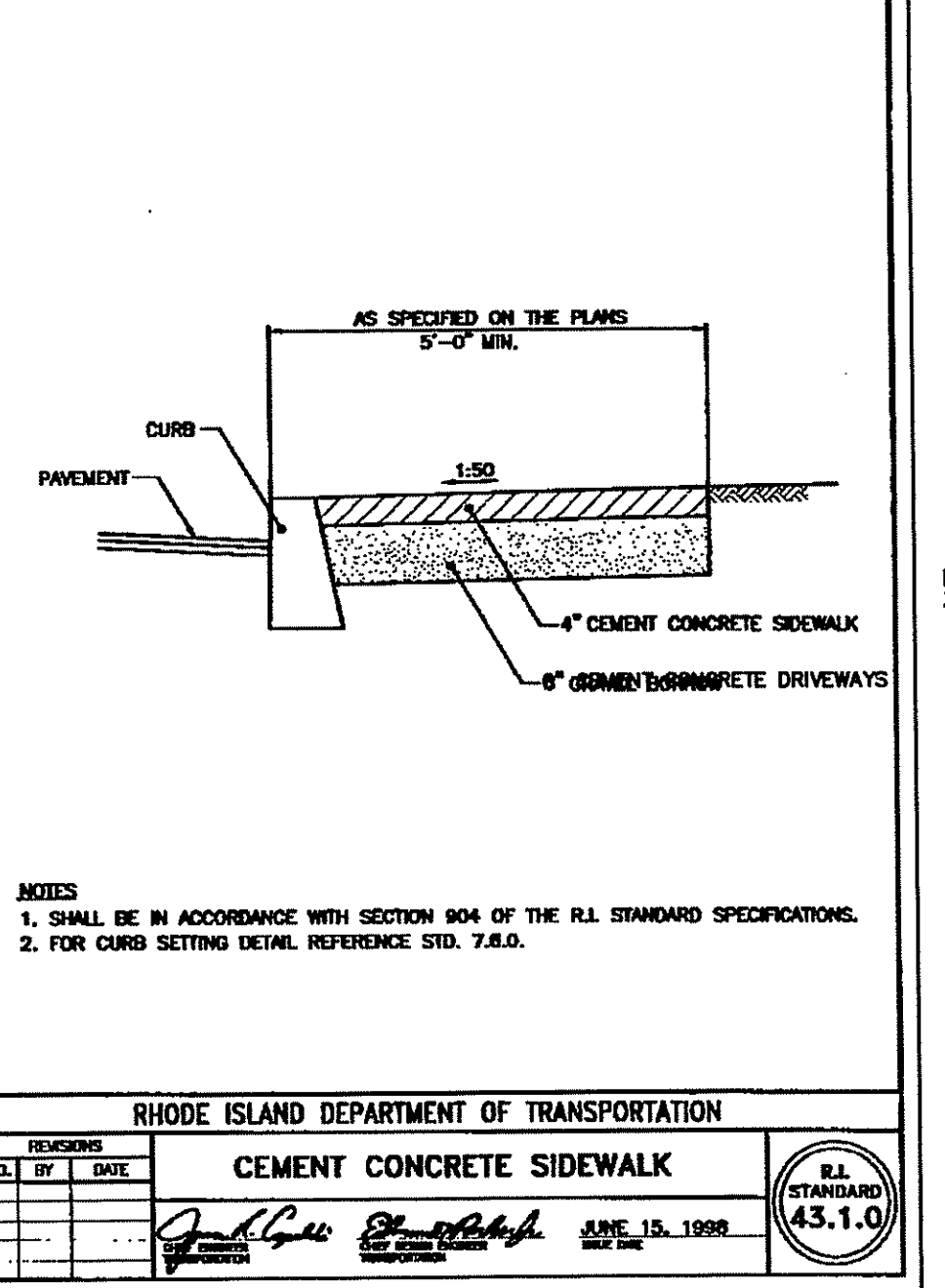
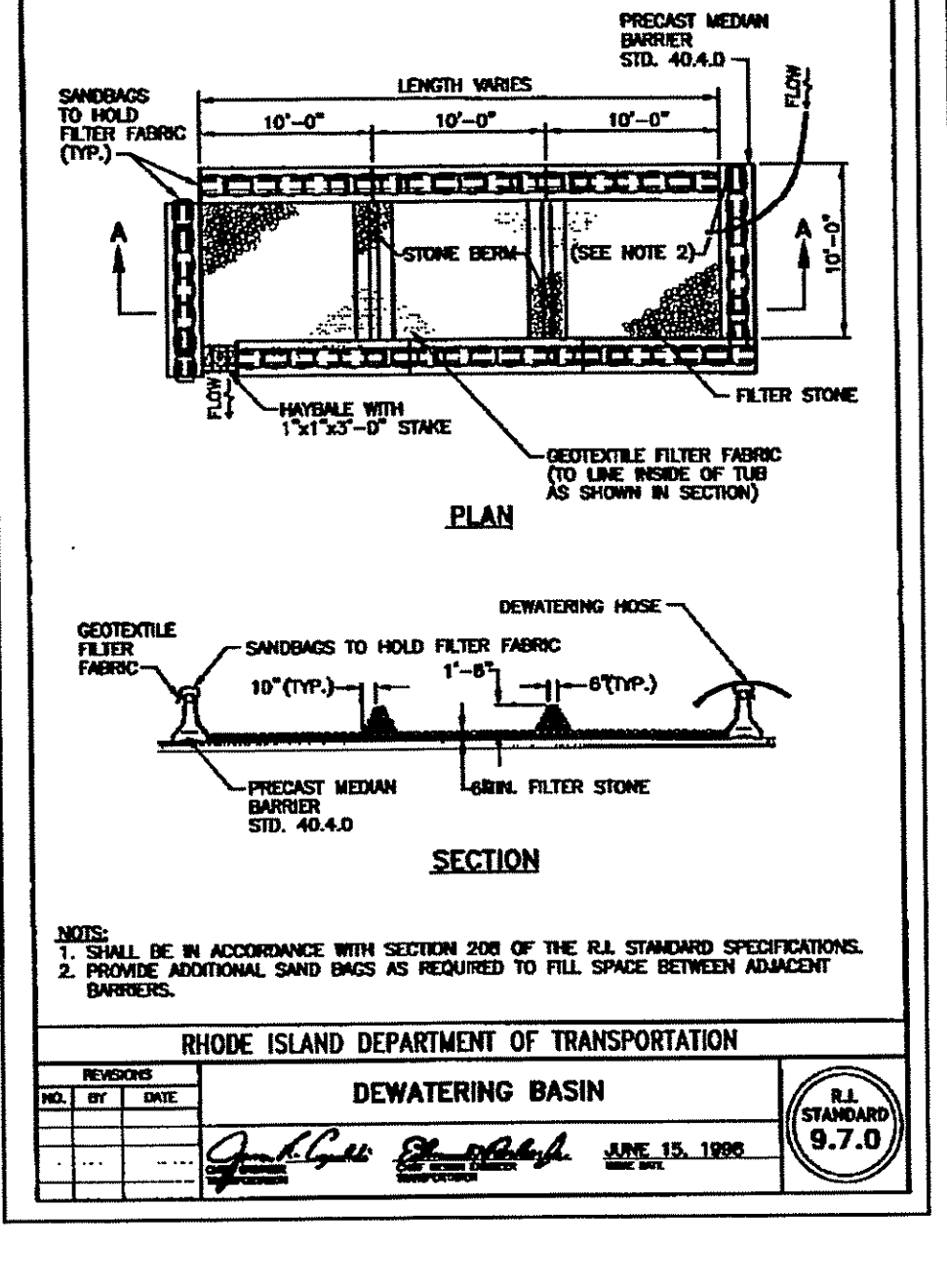
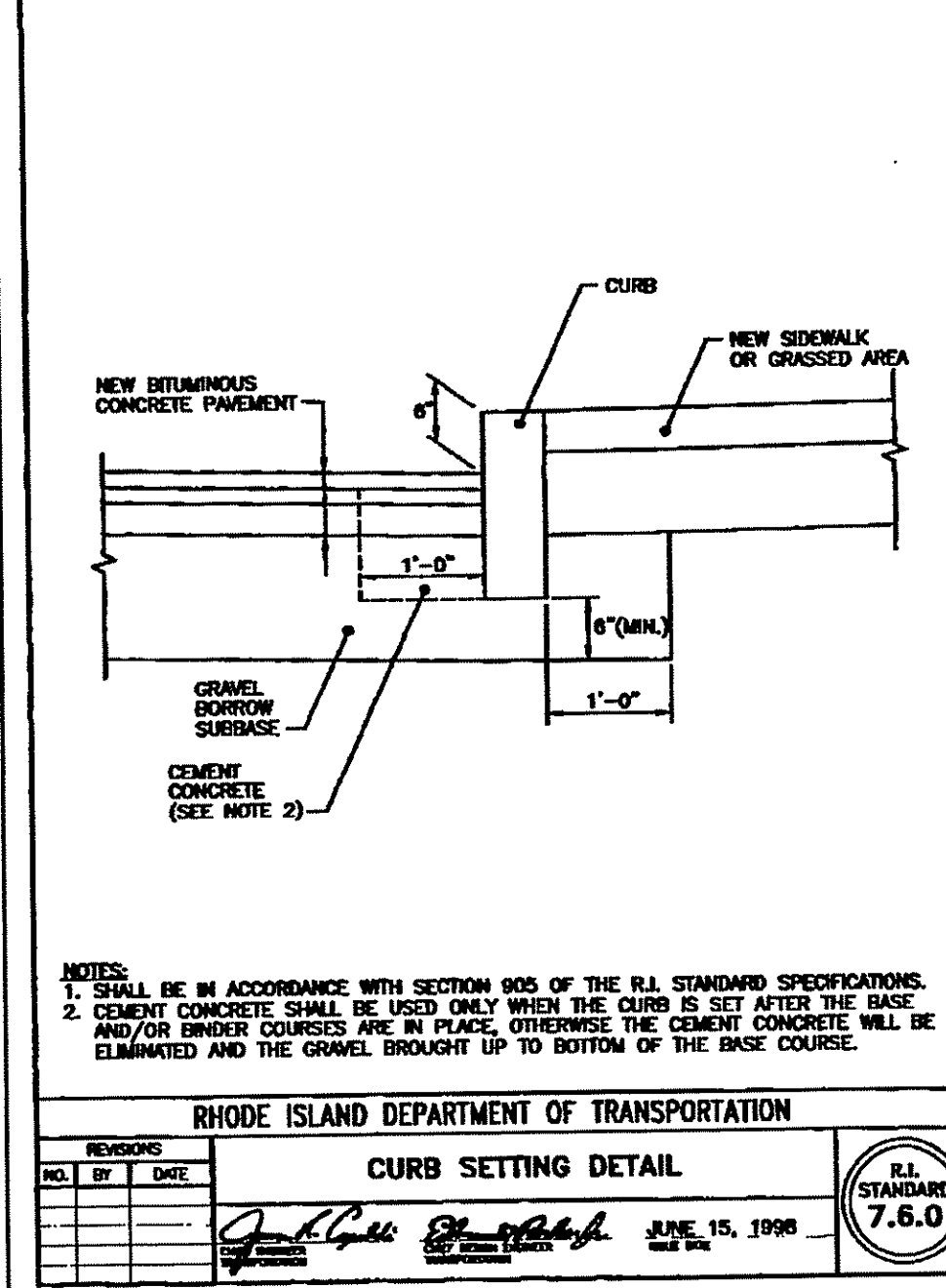
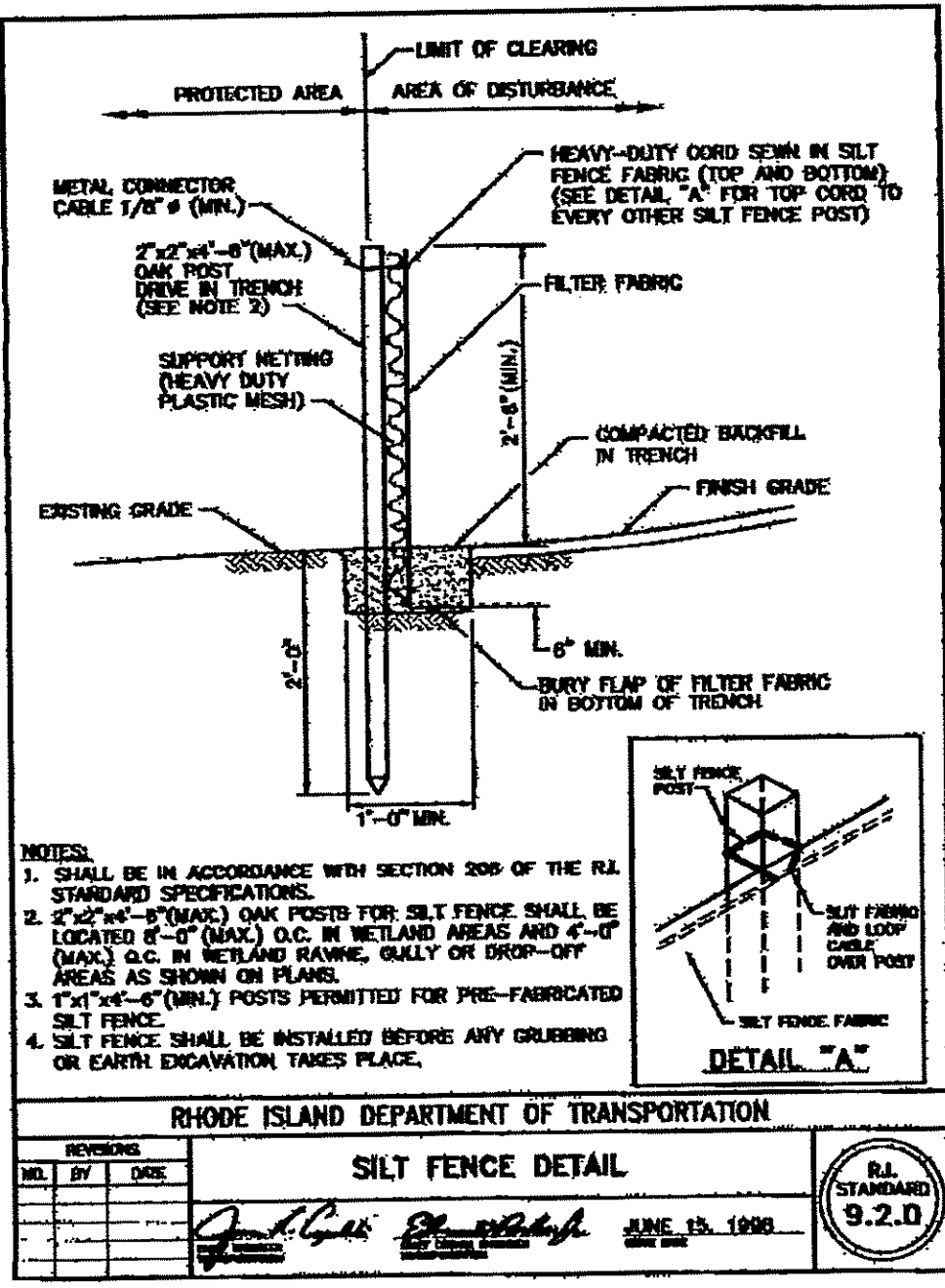
JAMES J. GEREMIA & ASSOCIATES, INC.
 CONSULTING ENVIRONMENTAL ENGINEERS & SCIENTISTS
 272 W. Exchange Street Suite 201 Providence, RI 02903-1025
 Phone: 401-454-7000 Fax: 401-454-7415

PHASE II
NORTH SMITHFIELD WASTEWATER
COLLECTION SYSTEM IMPROVEMENTS
 PREPARED FOR
TOWN OF NORTH SMITHFIELD

COSS SECTIONS
EASEMENT STA 3+50 TO STA 4+45
NORTH SMITHFIELD, RI

GENERAL NOTES:

- PLANIMETRIC AND TOPOGRAPHIC MAPPING BY COL-EAST INC.
- FIELD EDITING BY MARC N. NYBERG ASSOC. WETLAND FLAGGING BY APPLIED BIOSYSTEMS. HORIZONTAL DATUM = NAD 1983 AND VERTICAL DATUM = NAVD 1988
- LOCATION AND DEPTHS OF EXISTING UTILITIES ARE APPROXIMATE AND HAVE BEEN PLOTTED FROM THE BEST AVAILABLE INFORMATION BY MARC NYBERG & ASSOC. THE CONTRACTOR SHALL VERIFY LOCATIONS OF ALL EXIST. UTILITIES AND NOTIFY THE APPROPRIATE UTILITY AUTHORITIES INCLUDING "DIE SAFE" PRIOR TO STARTING WORK ANY DAMAGE TO UTILITIES CAUSED BY THE CONTRACTOR'S OPERATIONS SHALL BE THE RESPONSIBILITY OF THE CONTRACTOR AND THE COST OF REPAIRS SHALL BE BORNE BY THE CONTRACTOR AT NO ADDITIONAL EXPENSE TO THE OWNER
- PROTECTION OF WATER LINES: SEWERS SHALL BE LAID AT A MIN. AT LEAST 10 FEET HORIZONTALLY FROM ANY EXIST. OR PROPOSED WATER MAIN OR SERVICE. SHOULD LOCAL CONDITIONS PREVENT A LATERAL SEPARATION OF 10 FEET, THE SEWER LINE SHALL BE CONSTRUCTED OF AWMA 900 POLYVINYL CHLORIDE PRESSURE PIPE. WHENEVER SEWERS CROSS UNDER WATER MAINS, OR SERVICES, THE SEWER SHALL BE LAID AT SUCH AN ELEVATION THAT THE TOP OF THE SEWER IS AT LEAST 18 INCHES BELOW THE BOTTOM OF THE WATER MAIN. WHEN THE ELEVATION OF THE SEWER CANNOT BE RELOCATED TO PROVIDE THIS SEPARATION, THE SEWER LINE SHALL BE CONSTRUCTED OF AWMA 900 POLYVINYL CHLORIDE PRESSURE PIPE FROM MANHOLE TO MANHOLE REACH INCLUDING THE SERVICE CONNECTION PIPE. THE CONTRACTOR SHALL VERIFY AND DOCUMENT SUCH CONDITIONS PRIOR TO EXCAVATION.
- THE CONTRACTOR SHALL CONFIRM HIS OPERATIONS AND ACTIVITIES FOR CONSTRUCTION PURPOSES TO WITHIN THE STREET LINES, EASEMENTS AND/OR RIGHT OF WAY ACROSS PRIVATE PROPERTY.
- ALL AREAS DISTURBED BY THE CONTRACTOR SHALL BE RESTORED TO THEIR ORIGINAL CONDITION.
- WATER, GAS, SEWER AND OTHER UTILITIES SHALL BE MAINTAINED AT ALL TIMES DURING CONSTRUCTION.
- ALL GRASSSED AREAS DISTURBED BY THE CONTRACTOR'S OPERATIONS SHALL BE LOAMED AND SEEDED.
- ALL CURBING DISTURBED BY THE CONTRACTOR'S OPERATIONS SHALL BE REPLACED AND RESTORED AT NO ADDITIONAL EXPENSE TO THE OWNER.
- A HOUSE CONNECTION SHALL BE PROVIDED FOR EVERY HOUSE LOT ALONG THE ROUTE OF THE SEWER LINE, AND AS DIRECTED BY THE OWNER. EXACT LOCATIONS AND END DEPTHS OF HOUSE CONNECTIONS SHALL BE DETERMINED BY THE OWNER'S REPRESENTATIVE DURING CONSTRUCTION.
- PROPERTY AND STREET LINE INFORMATION SHOWN ON THE DRAWINGS WERE OBTAINED FROM ASSESSOR'S PLAT MAPS AND SHOULD BE CONSIDERED APPROXIMATE.
- ALL ELEVATIONS ARE BASED ON NATIONAL GEODETIC VERTICAL DATUM OF 1988 AND HORIZONTAL DATUM OF NAD 83. BENCH MARK ELEVATIONS ARE AS SHOWN ON PLANS.
- SAW CUT PAVEMENT FULL-DEPTH PRIOR TO THE INSTALLATION OF SEWERS.
- DRIVEWAYS TO BE SAW CUT.
- EACH DWELLING UNIT AND COMMERCIAL ESTABLISHMENT SHALL BE ACCESSIBLE FOR TRASH REMOVAL AND POSTAL SERVICE.
- SCHOOL BUS SERVICE SHALL NOT BE DISRUPTED.
- AT THE END OF EACH WORK DAY THE TRENCH SHALL BE TOTALLY BACKFILLED.
- DEWATERING SYSTEMS EFFLUENT FOR TRENCH EXCAVATIONS SHALL BE DISCHARGED INTO DEWATERING BASINS. THE EFFLUENT FROM THE DEWATERING BASINS SHALL HAVE NO VISUAL SEDIMENTATION PRESENT AND SHALL NOT CAUSE SILTATION OF EXISTING DRAINAGE SYSTEM AND REGULATED WETLANDS. THE DEWATERING BASINS SHALL HAVE A VOLUME NOT LESS THAN THE TOTAL VOLUME OF WATER THAT WILL BE PUMPED DURING A FOUR-HOUR PERIOD.
- THE DEWATERING BASINS SHALL BE DESIGNED IN ACCORDANCE WITH THE R.I. SOIL EROSION AND SEDIMENTATION CONTROL HANDBOOK.
- THE CONTRACTOR SHALL SUBMIT CALCULATIONS FOR SIZING OF DEWATERING BASINS TO THE ENGINEER FOR REVIEW.
- THE CONTRACTOR WILL BE RESPONSIBLE FOR SEDIMENTATION THAT ENTERS THE DRAINAGE SYSTEM AND REGULATED WETLANDS. THE WETLANDS SHALL BE RESTORED IN ACCORDANCE WITH RIDEM REQUIREMENTS AT NO ADDITIONAL COST TO THE OWNER. THE CONTRACTOR WILL BE RESPONSIBLE FOR FINES THAT MAY BE IMPOSED BY THE RIDEM, AND THE OWNER WILL NOT REIMBURSE THE CONTRACTOR.
- PRIOR TO COMMENCING CONSTRUCTION OPERATIONS, SILT FENCING SHALL BE PLACED SO AS TO PREVENT SEDIMENT FROM ENTERING ADJOINING REGULATED WETLANDS.
- THE CONTRACTOR SHALL BE RESPONSIBLE FOR ALL EROSION CONTROL MAINTENANCE AND SHALL INSPECT/REPLACE DAILY AND AFTER EACH RAINFALL. REPAIRS SHALL BE MADE IMMEDIATELY.
- ALL SEDIMENT MUST BE REMOVED WHEN THE HEIGHT OF THE SEDIMENT REACHES THE HEIGHT OF THE SEDIMENT BARRIER (SILT FENCE).
- THE "R.I. EROSION AND SEDIMENT CONTROL HANDBOOK" PREPARED BY THE U.S. DEPARTMENT OF AGRICULTURE, SOIL CONSERVATION SERVICE, LATEST EDITION, MUST BE UTILIZED BY THE CONTRACTOR AS A GUIDE.
- THE CONTRACTOR SHALL HAVE TRAFFIC CONTROL DEVICES, SUCH AS SIGNAGE, ETC., INSTALLED PRIOR TO THE START OF CONSTRUCTION, IN ACCORDANCE WITH THE TOWN AND THE RHODE ISLAND DEPARTMENT OF TRANSPORTATION, AND THE MUTCD MANUAL.
- CONTRACTOR SHALL SUBMIT TO RIDOT TRAFFIC CONTROL PLANS FOR APPROVAL PRIOR TO BEGINNING THE PROJECT.
- THE CONTRACTOR WILL BE REQUIRED TO PROVIDE CERTIFICATION BY A PROFESSIONAL ENGINEER THAT THE SOIL COMPACTION OF TRENCHES MEETS SPECIFIED STANDARDS.
- TEMPORARY PAVEMENT SHALL BE INSTALLED AT THE END OF EACH WORK DAY
- CONSTRUCTION ON GREAT ROAD AND ST PAUL ST SHALL BE IN ACCORDANCE WITH THE LATEST REVISION OF LAND MODIFICATIONS TO THE STATE OF RHODE ISLAND STANDARD SPECIFICATIONS FOR ROAD AND BRIDGE CONSTRUCTION. & STANDARD DETAILS.
- THE CONTRACTOR SHALL NOTIFY THE WATER USERS 24 HOURS PRIOR TO ANY WATER SHUT DOWNS.
- CONTRACTOR IS REQUIRED TO ESTABLISH ADDITIONAL BENCHMARKS AS REQUIRED FOR HIS OR HER OPERATIONS AT NO ADDITIONAL COST TO THE OWNER
- CONTRACTOR SHALL COORDINATE WITH UTILITY COMPANY TO SECURE POLES AND PROVIDE SHIELDS AS REQUIRED DURING CONSTRUCTION AT NO ADDITIONAL COST TO THE OWNER
- DRAIN PIPES THAT ARE DAMAGED OR REMOVED BY THE CONTRACTOR SHALL BE REPLACED IN KIND PRIOR TO THE END OF THE WORK DAY AT NO ADDITIONAL COST TO THE OWNER.
- WORK HOURS ON STATE ROADWAY SHALL BE FROM 9:00 AM TO 3:00 PM



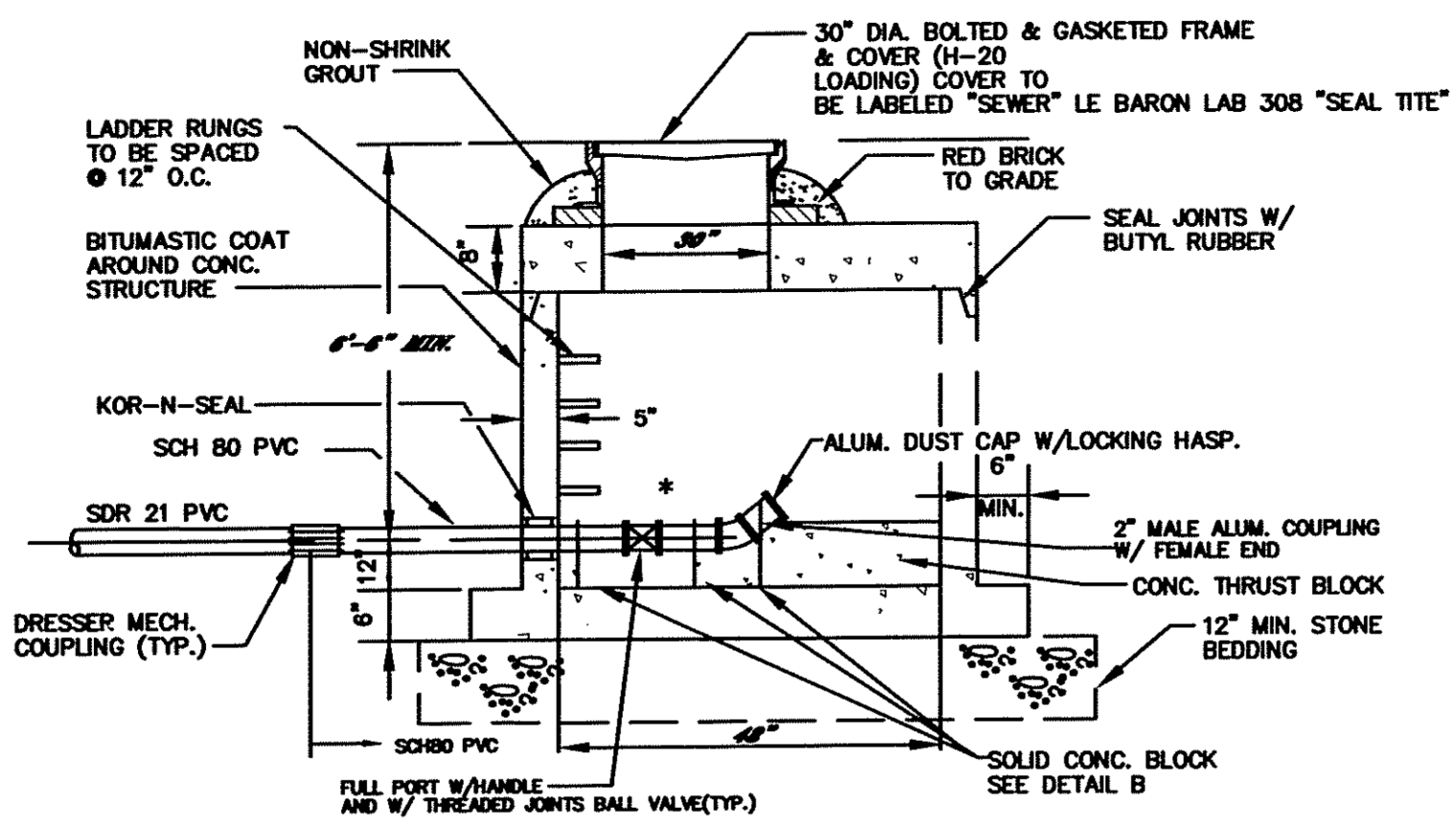
DESIGNED BY: RMH	CHECKED BY: JJC	DATE: FEB 2009
DRAWN BY: CJB	SCALE: AS SHOWN	REMARKS:
CADD FILE:	DATE PRINTED:	

DESIGNED BY: RMH
 DRAWN BY: CJB
 CHECKED BY: JJC
 SCALE: AS SHOWN
 DATE: FEB 2009

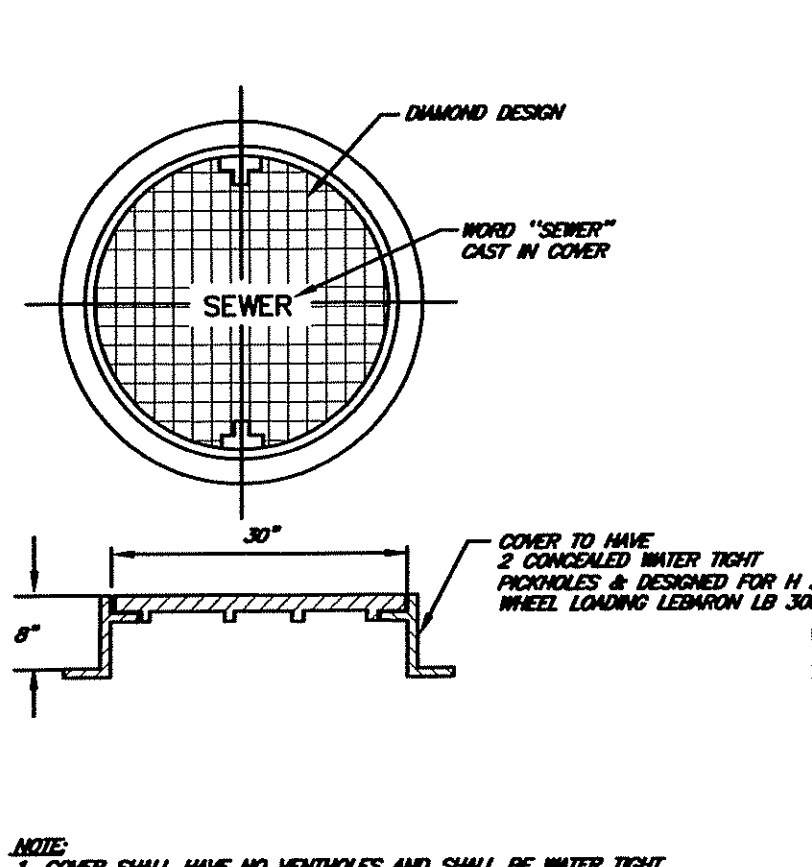
JAMES J. GEREMIA & ASSOCIATES, INC.
 CONSULTING ENVIRONMENTAL ENGINEERS & SCIENTISTS
 272 W. Exchange Street Suite 201 Providence, RI 02903-1025
 Phone: 401-454-7000 Fax: 401-454-7415

PHASE II
 NORTH SMITHFIELD WASTEWATER
 COLLECTION SYSTEM IMPROVEMENTS
 TOWN OF NORTH SMITHFIELD

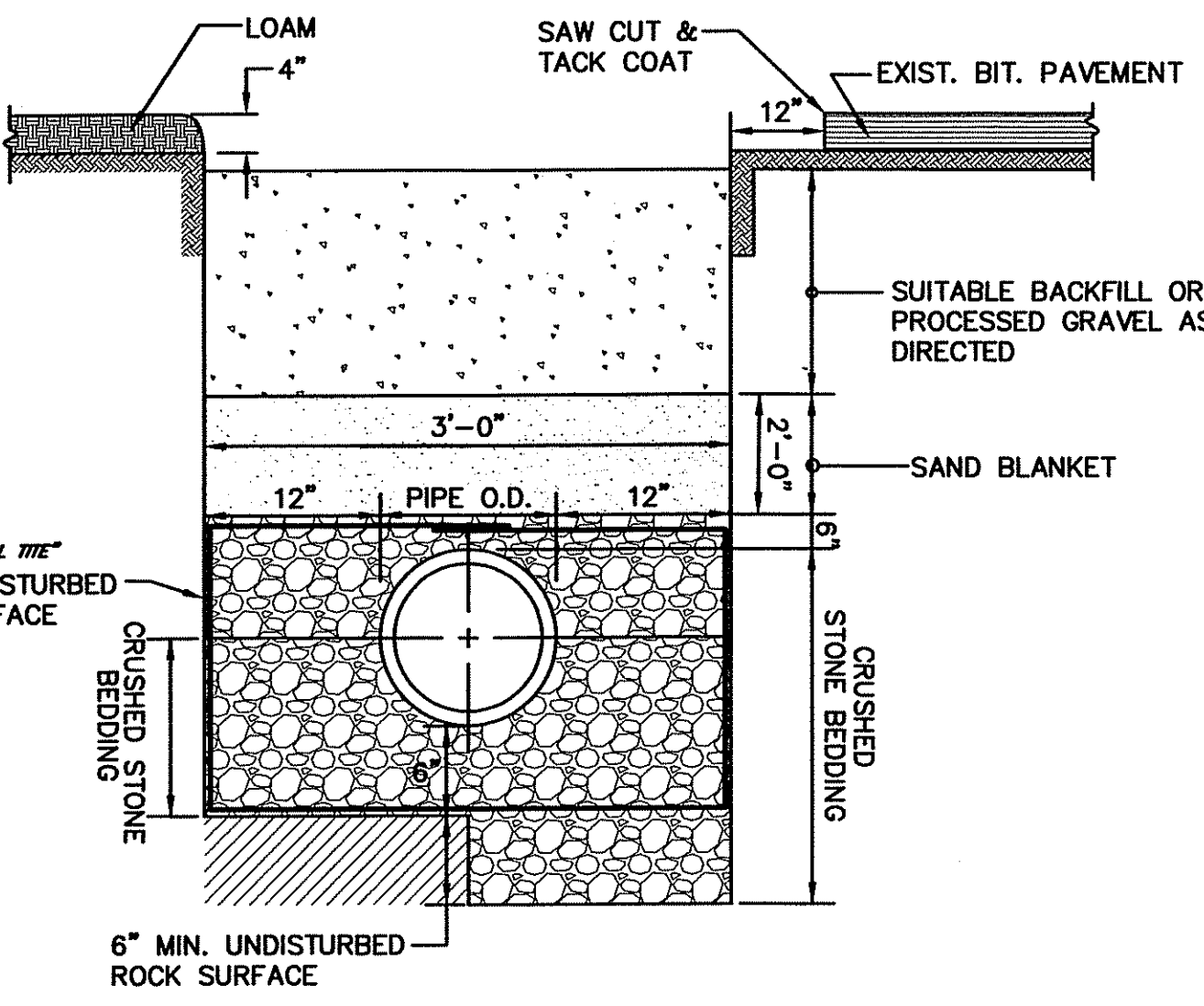
MISCELLANEOUS DETAILS I



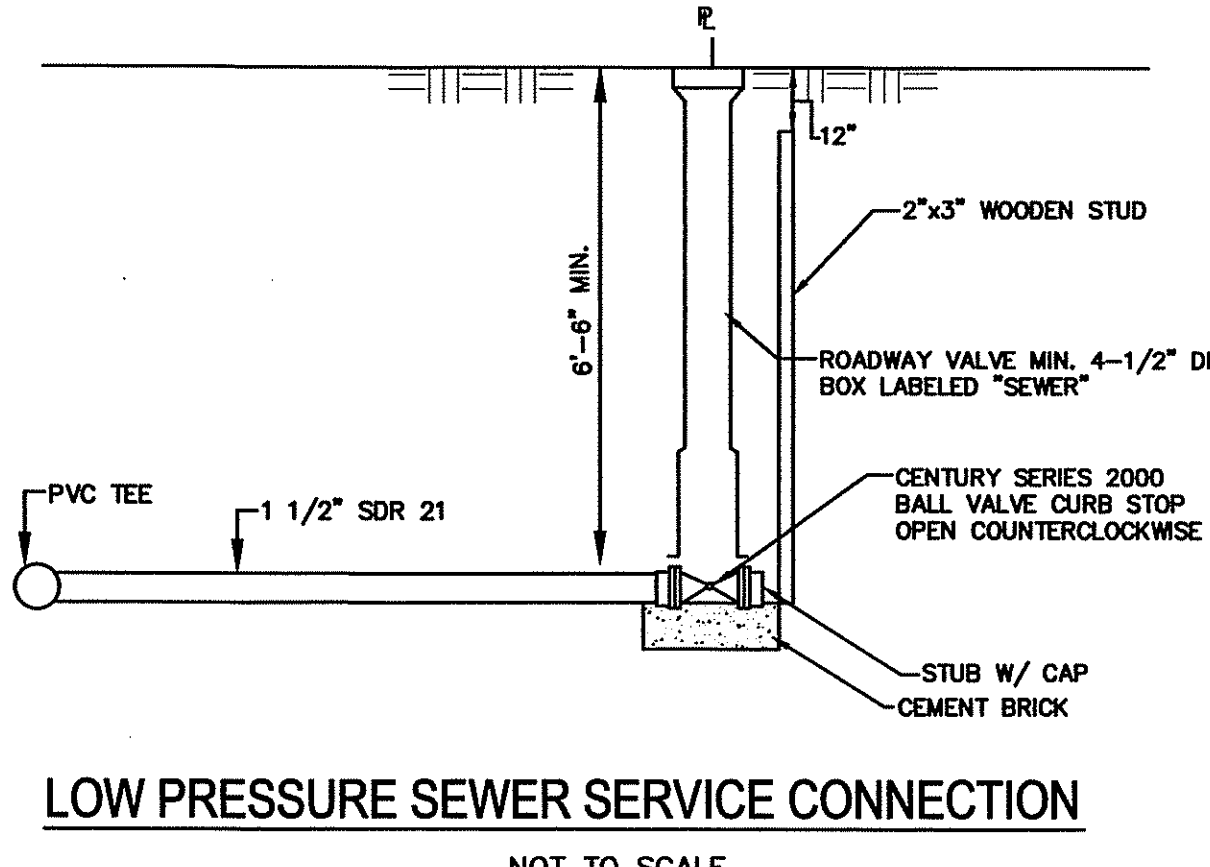
LOW PRESSURE TERMINAL END SEWER FLUSHING CONNECTION
NOT TO SCALE



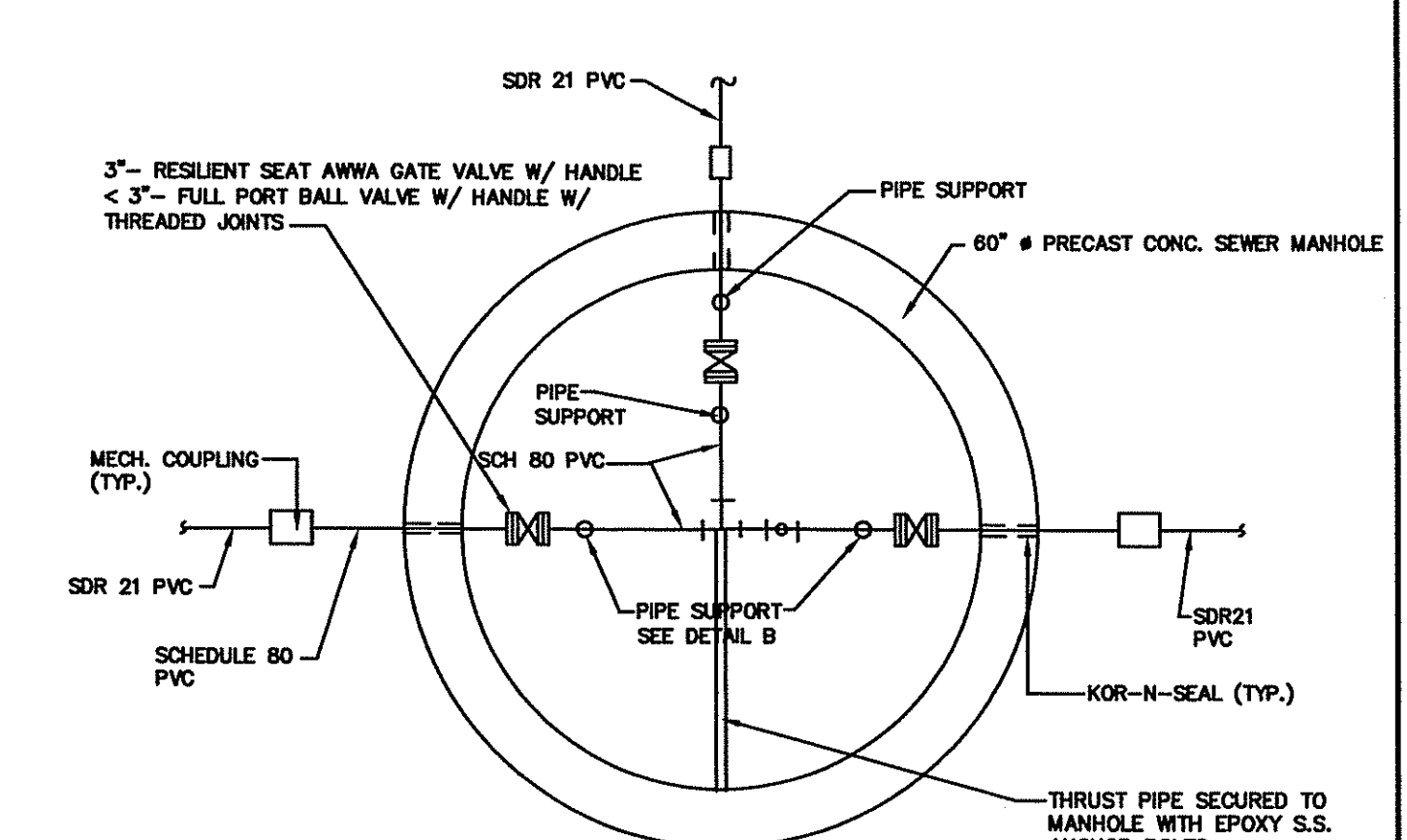
SANITARY MANHOLE FRAME & COVER DETAIL
NOT TO SCALE



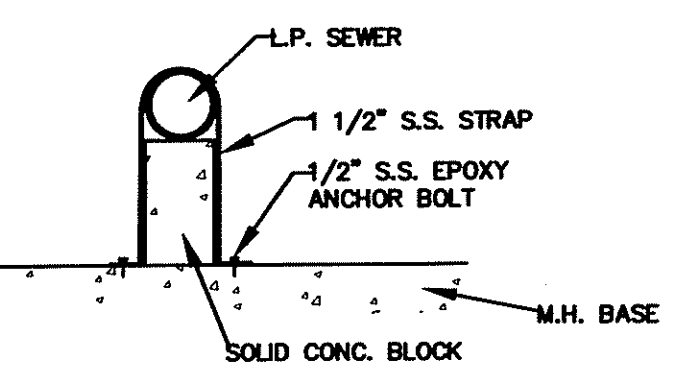
SEWER TRENCH DETAIL (WET AREA)
NOT TO SCALE



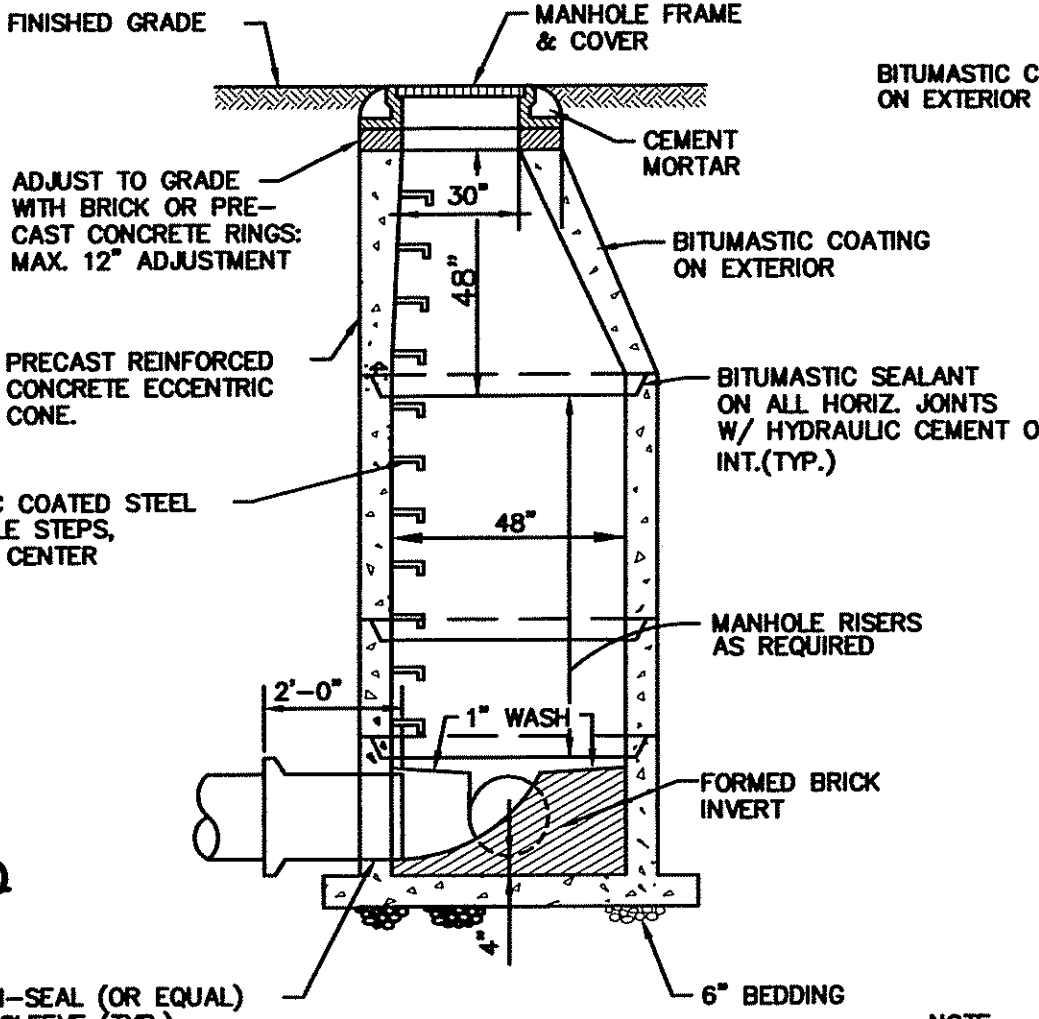
LOW PRESSURE SEWER SERVICE CONNECTION
NOT TO SCALE



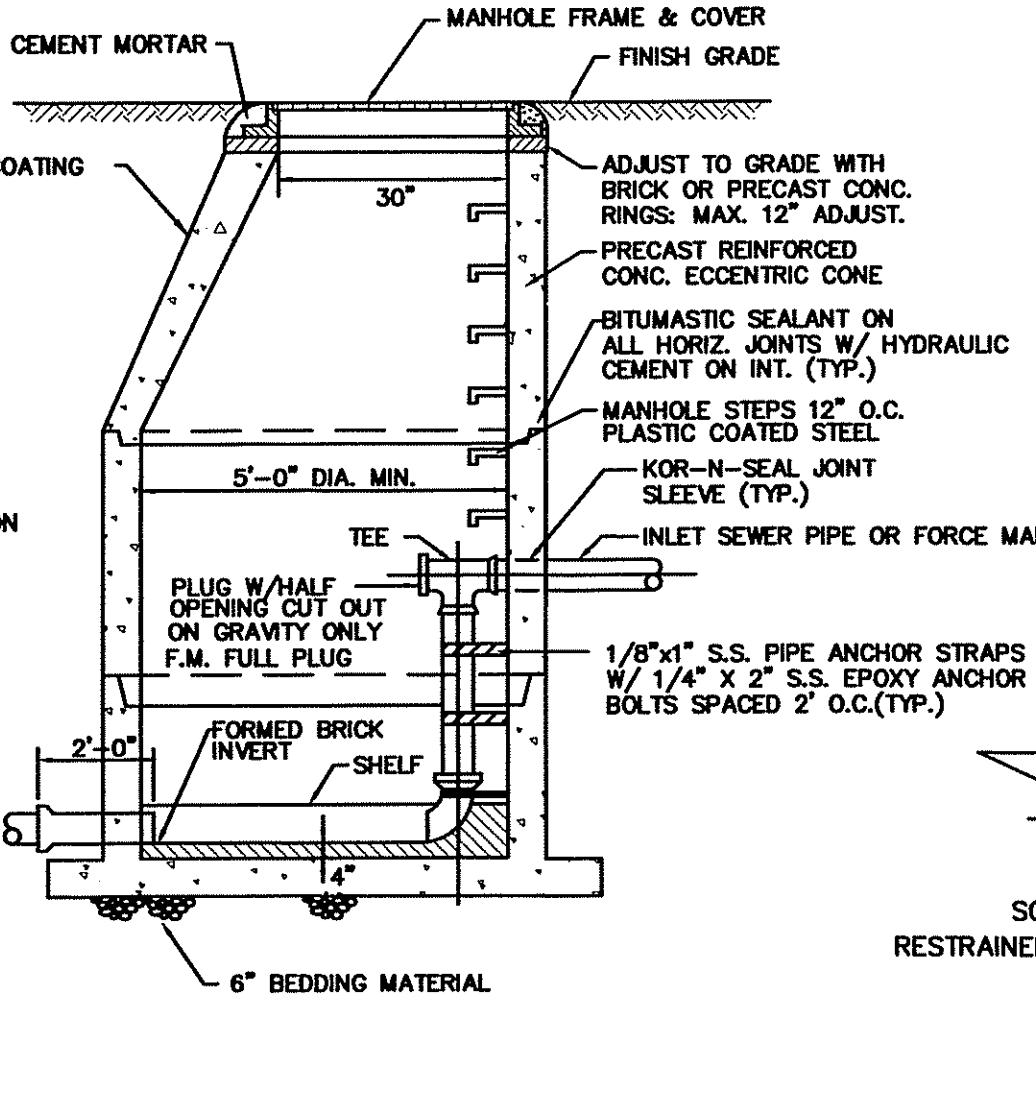
PLAN



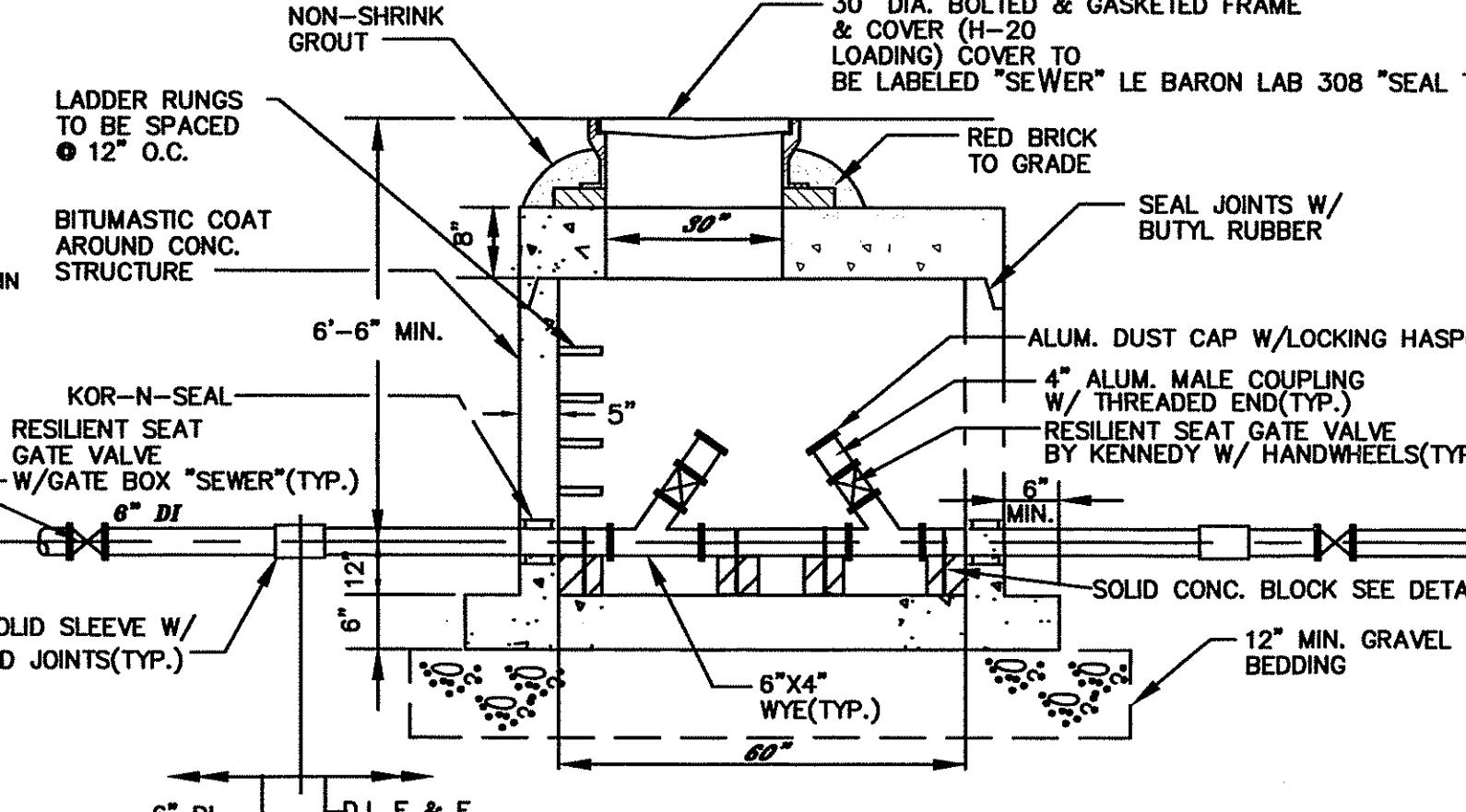
DETAIL "B"
NOT TO SCALE



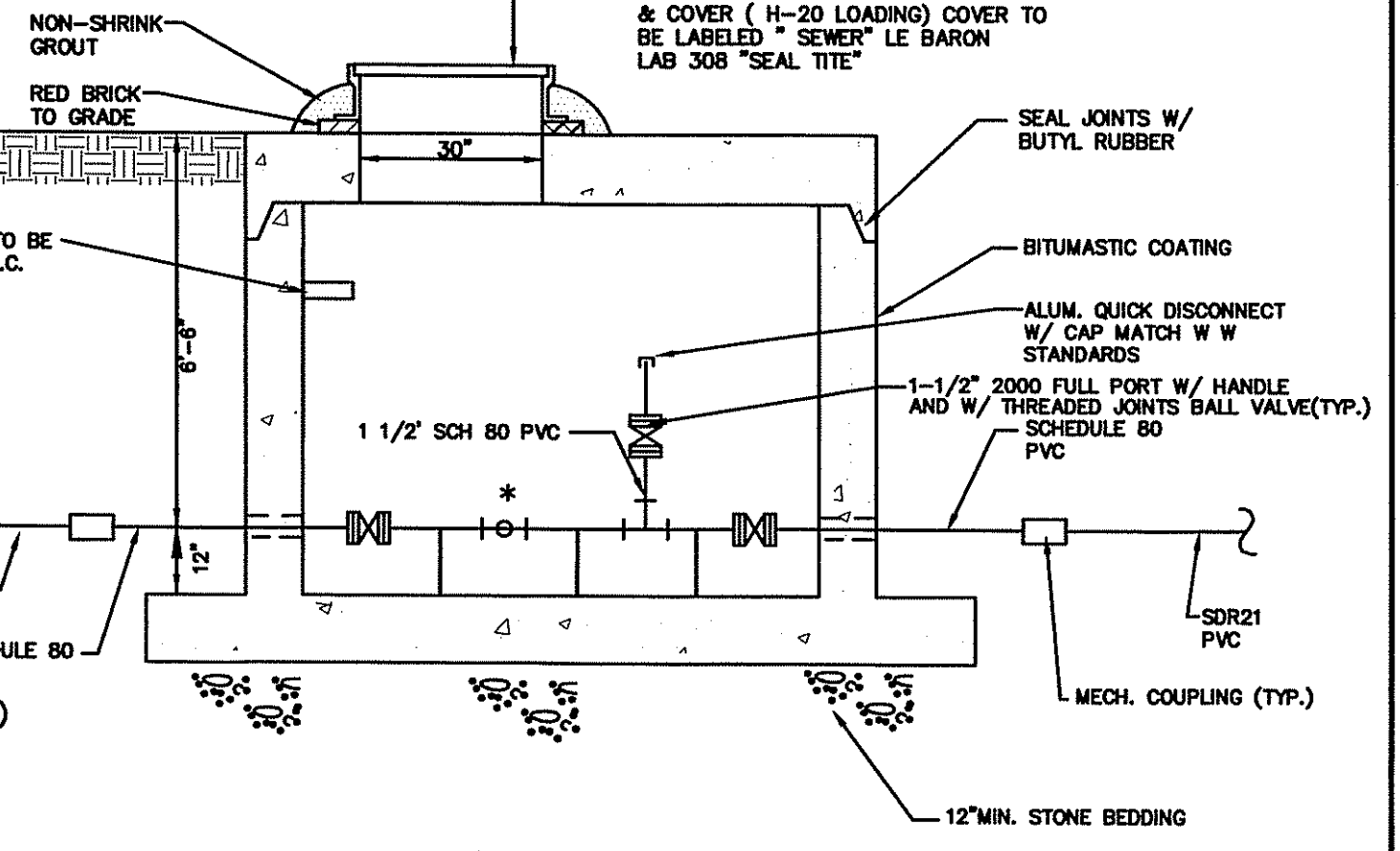
SANITARY MANHOLE DETAIL
NOT TO SCALE



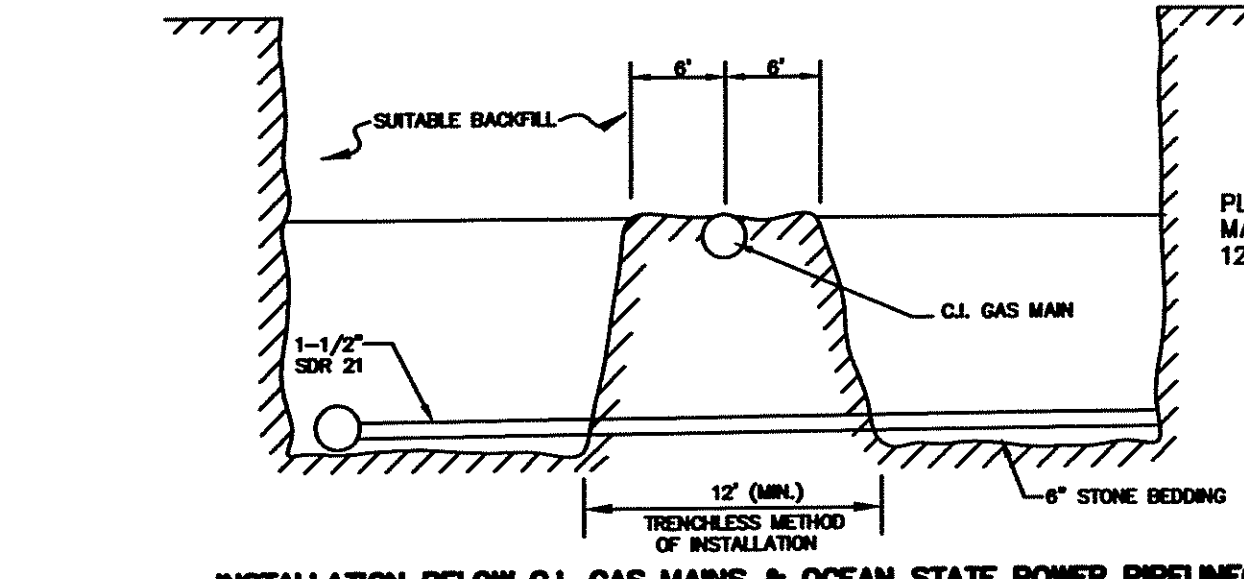
INSIDE DROP SANITARY MANHOLE
NOT TO SCALE



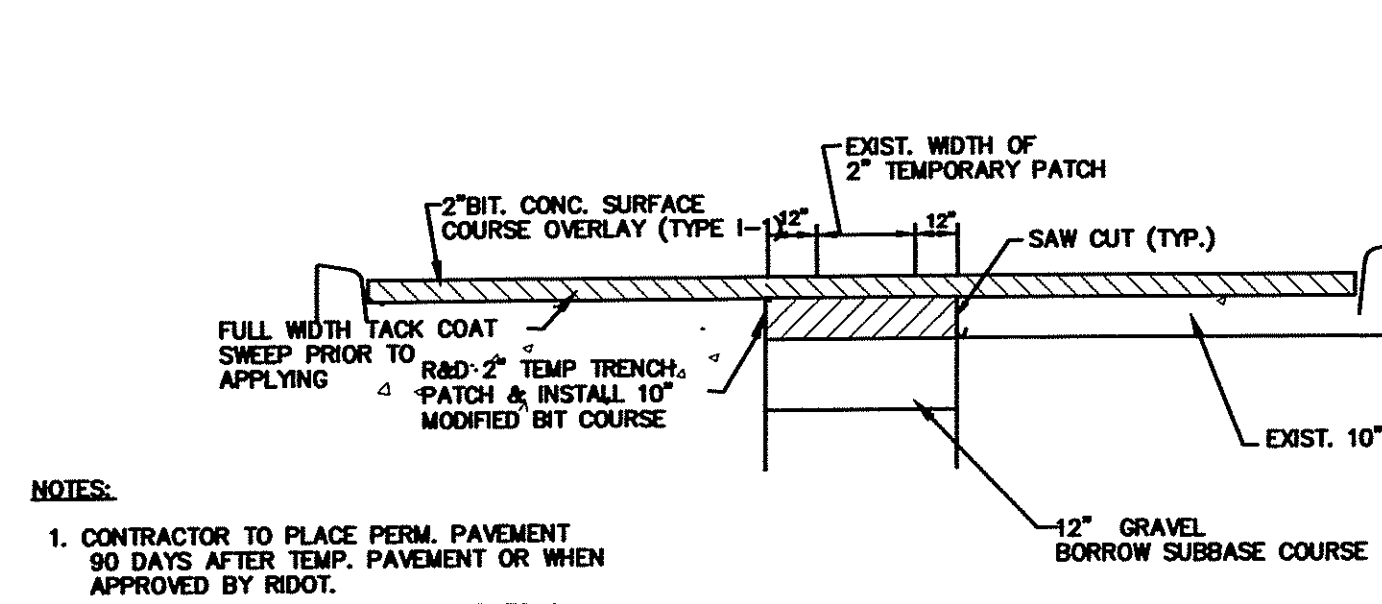
FORCE MAIN CLEAN OUT MANHOLE DETAIL
NOT TO SCALE



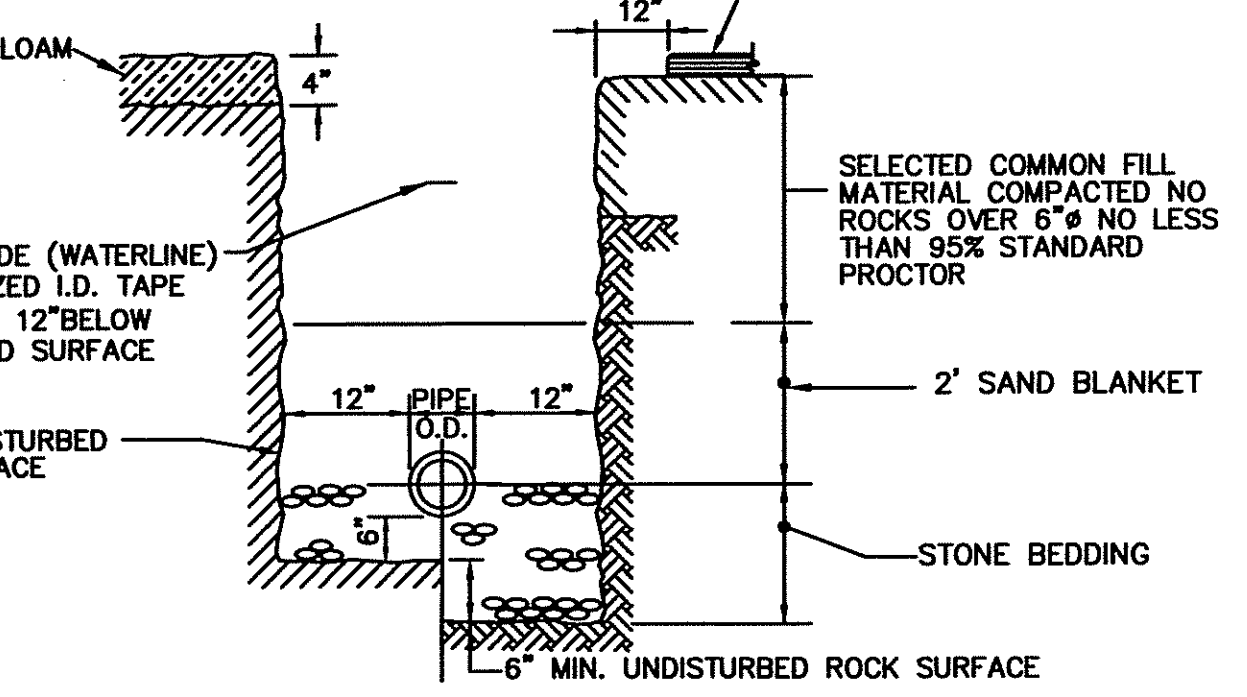
SECTION IN LINE FLUSHING CONNECTION
NOT TO SCALE



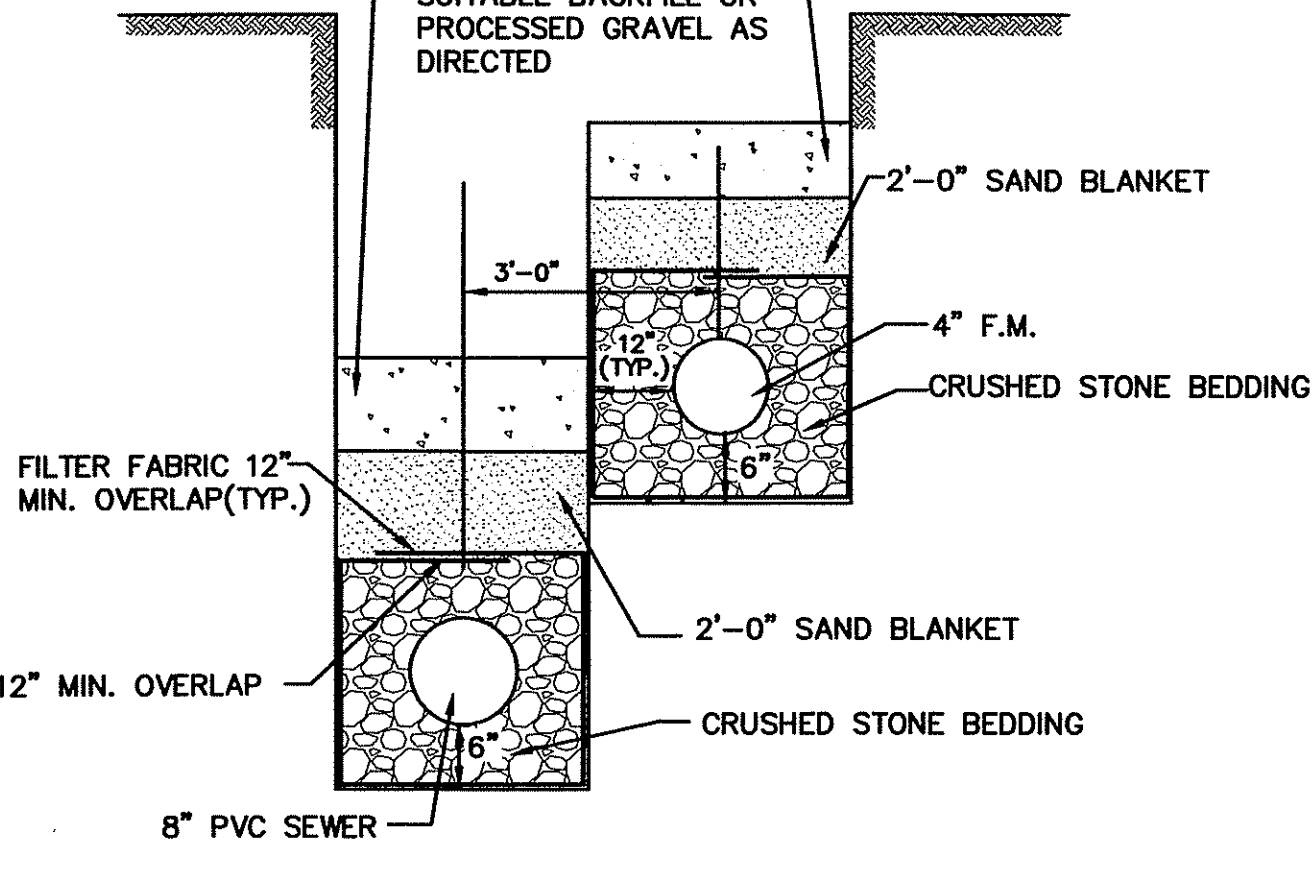
INSTALLATION BELOW C.I. GAS MAINS & OCEAN STATE POWER PIPELINE (OSP)
NOT TO SCALE



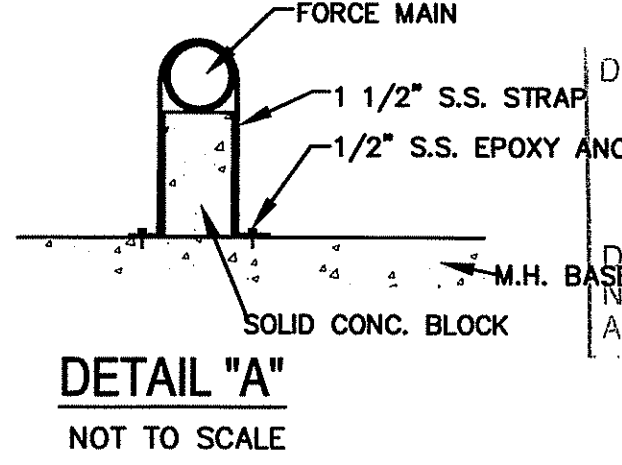
PERMANENT PAVEMENT ST. PAUL STREET
NOT TO SCALE



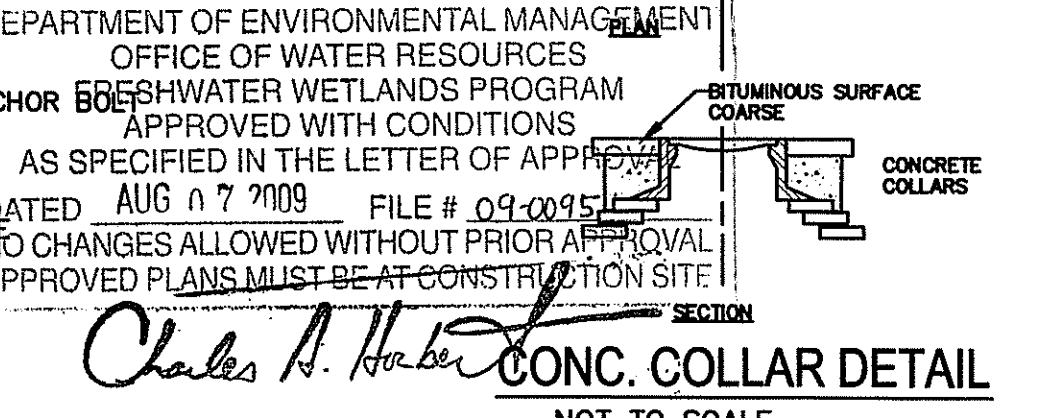
TRENCH DETAIL (DRY AREAS)
NOT TO SCALE



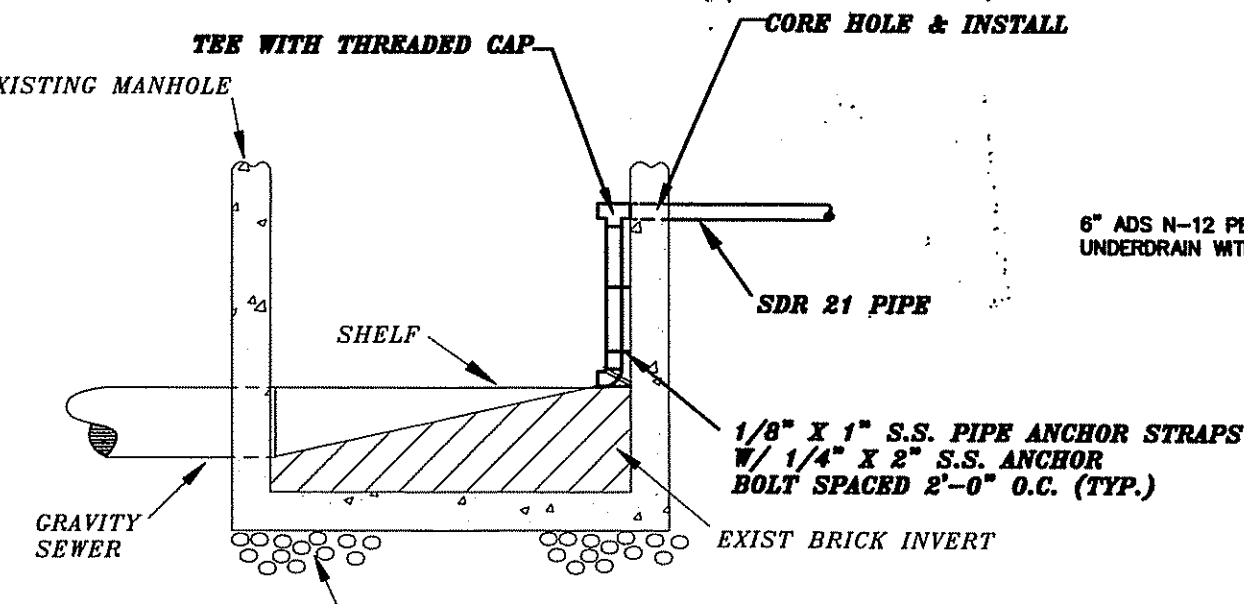
TRENCH DETAIL: GRAVITY SEWER & FORCE MAINS
NOT TO SCALE



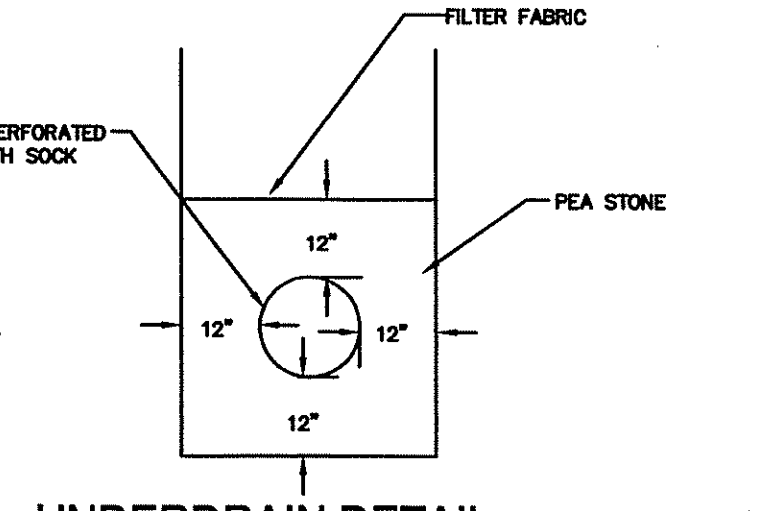
DETAIL "A"
NOT TO SCALE



CONC. COLLAR DETAIL
NOT TO SCALE



EXISTING SEWER MANHOLE
NOT TO SCALE



UNDERDRAIN DETAIL
NOT TO SCALE

- NOTES:**
1. CONTRACTOR TO PLACE PERM. PAVEMENT 90 DAYS AFTER TEMP. PAVEMENT OR WHEN APPROVED BY RIDOT.
 2. COLD PLANE FULL WIDTH OF ROAD TO A DEPTH OF 2" .

DEPARTMENT OF ENVIRONMENTAL MANAGEMENT
OFFICE OF WATER RESOURCES
ANCHOR BOWSHWATER WETLANDS PROGRAM
APPROVED WITH CONDITIONS
AS SPECIFIED IN THE LETTER OF APPROVAL
DATED AUG 07 2009 FILE # 09-0035
NO CHANGES ALLOWED WITHOUT PRIOR APPROVAL
APPROVED PLANS MUST BE AT CONSTRUCTION SITE

Charles A. Huber
CONC. COLLAR DETAIL
NOT TO SCALE

RECEIVED
JUL 24 2009

NO.:	BY:	DATE:	REMARKS:
CADD FILE:			DATE PRINTED:

DESIGNED BY: RMH
DRAWN BY: CJB
CHECKED BY: JUG
SCALE: AS SHOWN
DATE: FEB 2009

JAMES J. GEREMIA & ASSOCIATES, INC.
CONSULTING ENVIRONMENTAL ENGINEERS & SCIENTISTS
272 W. Exchange Street Suite 201 Providence, RI 02903-1025
Phone: 401-454-7000 Fax: 401-454-7415

PHASE II
NORTH SMITHFIELD WASTEWATER COLLECTION SYSTEM IMPROVEMENTS
PREPARED FOR
TOWN OF NORTH SMITHFIELD

MISCELLANEOUS DETAILS II

SHEET NO.
6