



Vanasse Hangen Brustlin, Inc.

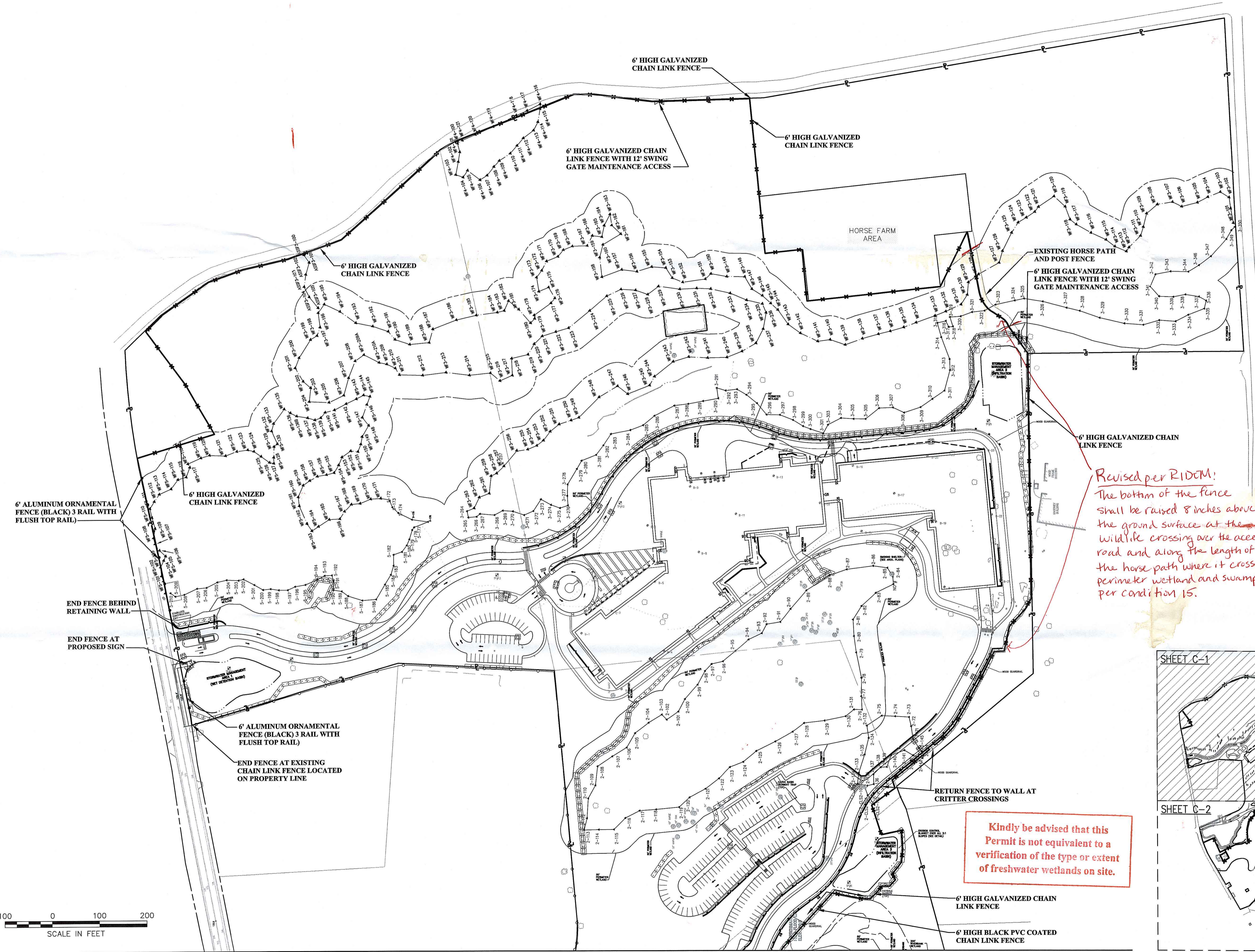
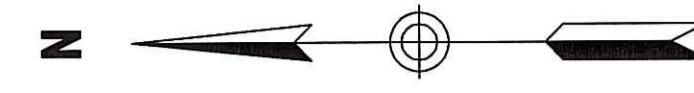
Transportation
Land Development
Environmental Services

10 Dorrance Street
Providence, Rhode Island 02903
401.272.8100 • FAX 401.273.9694

Note:

HORSE PATH LOCATED USING AERIAL PHOTOGRAPHY.

--- PROPOSED NEW CHAIN LINK FENCE



*Revised per RIDEM:
The bottom of the fence shall be raised 8 inches above the ground surface at the wildlife crossing over the access road and along the length of the horse path where it crosses perimeter wetland and swamp, per condition 15.*

Kindly be advised that this Permit is not equivalent to a verification of the type or extent of freshwater wetlands on site.

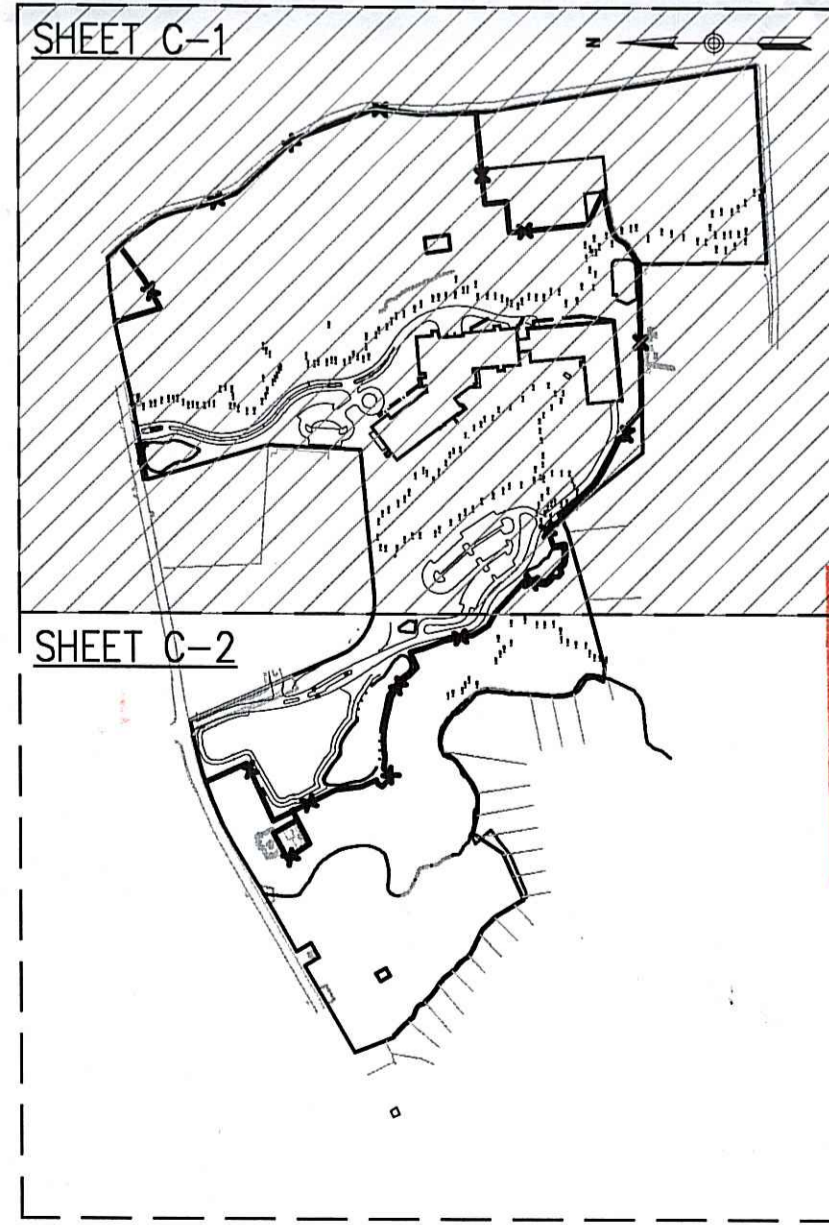
No.	Revision	Date	Approved

Designed by	Drawn by	Checked by
CAD checked by	Approved by	
Scale: As Noted	Date: July 2, 2009	

Project Title
**FM Global
New Corporate Headquarters
Perimeter Security Fence
Central Avenue
Johnston, Rhode Island**
Issued for

Permitting
Not Approved for Construction
Drawing Title

**DEPARTMENT OF ENVIRONMENTAL MANAGEMENT
OFFICE OF WATER RESOURCES
FRESHWATER WETLANDS PROGRAM
APPROVED WITH CONDITIONS
AS SPECIFIED IN THE LETTER OF APPROVAL
DATED August 20 2009 FILE # 09-0185
NO CHANGES ALLOWED WITHOUT PRIOR APPROVAL.
APPROVED PLANS MUST BE AT CONSTRUCTION SITE.**

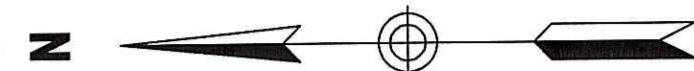


Drawing Number
C-1
Sheet of
1
Project Number
72012.40



MATCH TO DRAWING NO. C-2

MATCH TO DRAWING NO. C-1



6" BLACK ALUMINUM ORNAMENTAL FENCE 3 RAIL WITH FLUSH TOP RAIL
6" HIGH MANUAL OPERATED SWING GATE 14' WIDE MATCH FENCE TYPE
6" HIGH MANUAL OPERATED SWING GATE 20' WIDE MATCH FENCE TYPE

AUTOMATIC ARM GATE WITH ARMING LOOP AND RESET LOOP

6" HIGH BLACK PVC COATED CHAIN LINK FENCE



Kindly be advised that this Permit is not equivalent to a verification of the type or extent of freshwater wetlands on site.



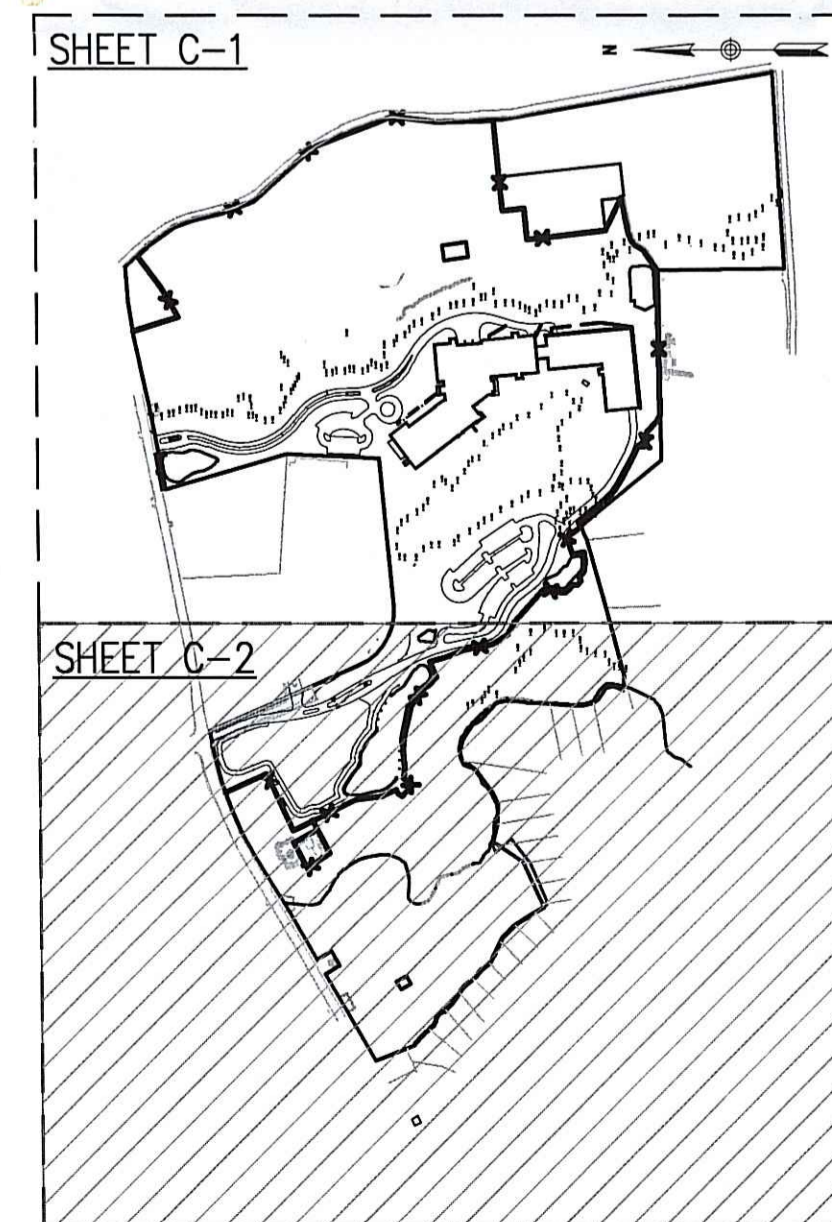
Vanasse Hangen Brustlin, Inc.

Transportation
Land Development
Environmental Services

10 Dorrance Street
Providence, Rhode Island 02903
401.272.8100 • FAX 401.273.9694

No.	Revision	Date	Approved

Designed by _____ Drawn by _____ Checked by _____
CAD checked by _____ Approved by _____
Scale As Noted Date July 2, 2009
Project Title



SITE KEY PLAN
NOT TO SCALE

FM Global
New Corporate Headquarters
Perimeter Security Fence
Central Avenue
Johnston, Rhode Island

Permitting

Not Approved for Construction

DEPARTMENT OF ENVIRONMENTAL MANAGEMENT
OFFICE OF WATER RESOURCES
FRESHWATER WETLANDS PROGRAM
APPROVED WITH CONDITIONS
AS SPECIFIED IN THE LETTER OF APPROVAL
DATED Aug. 29, 2009 FILE # 09-0185
NO CHANGES ALLOWED WITHOUT PRIOR APPROVAL
APPROVED PLANS MUST BE AT CONSTRUCTION SITE.

Drawing Number

C-2

Sheet 2 of 2

Project Number 72012.40