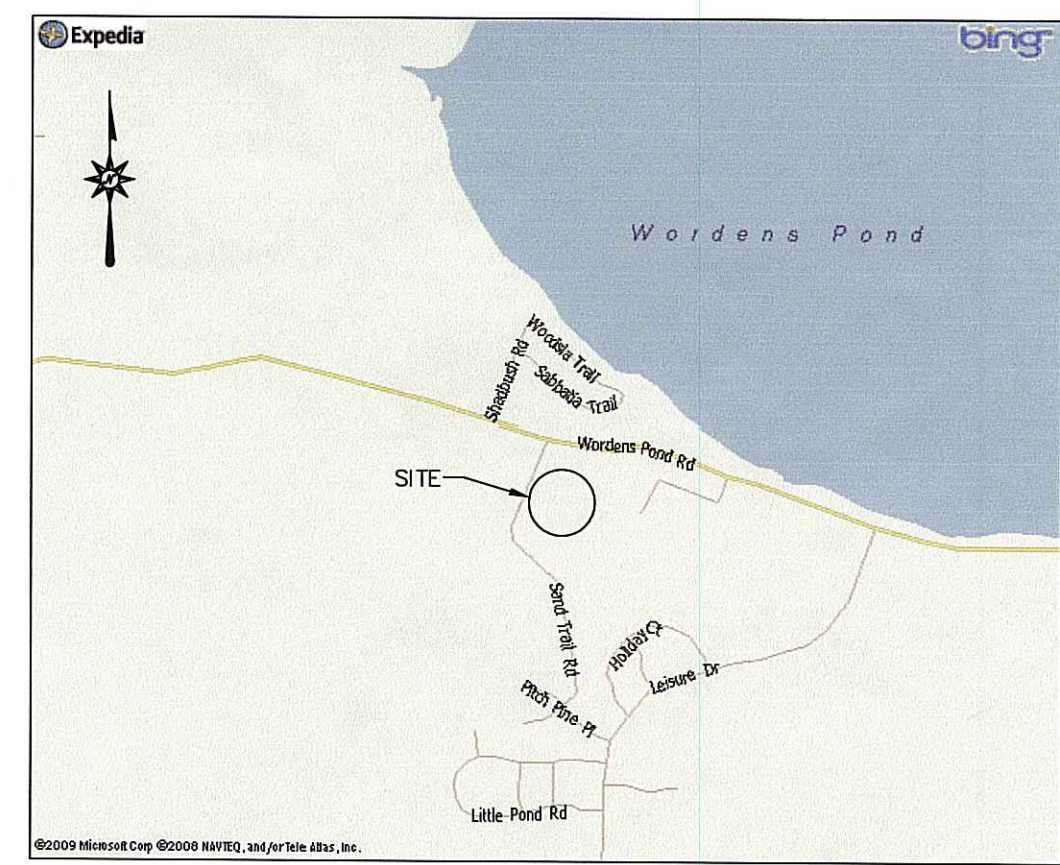


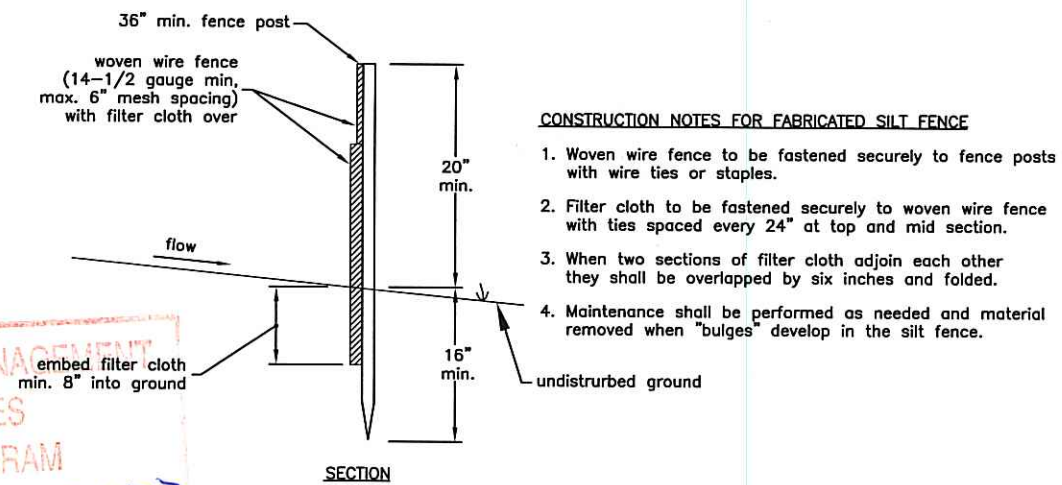
PLAN VIEW
SCALE: 1"=30'



LOCATION MAP

LEGEND

- EXISTING CONTOURS --- 75
- PROPOSED CONTOURS --- 104
- PROPERTY LINE ---
- EXISTING TREELINE ~~~~~
- UTILITY POLE U.P. 110
- PROP. TREELINE ~~~~~
- EXIST. WATER LINE --- W ---
- TEST HOLE TH-1
- LEDGE HOLE L-1
- WETLAND EDGE & FLAG # WE-D3

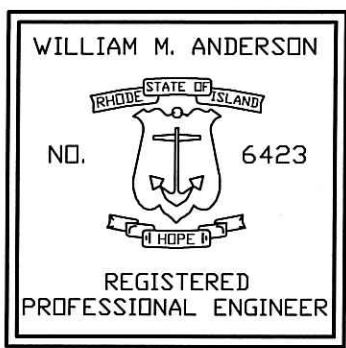


SILT FENCE DETAIL
N.T.S.

DEPARTMENT OF ENVIRONMENTAL MANAGEMENT
OFFICE OF WATER RESOURCES
FRESHWATER WETLANDS PROGRAM
REVIEWED SITE PLAN APPLICATION NO.: 09-0187
DATED SEP 1 0 2009
SEE LETTER OF SAME DATE.

NOTES

1. THE SILT FENCE SHALL BE INSTALLED PRIOR TO ANY EARTHWORK ACTIVITY AS SHOWN ON DETAIL THIS SHEET. CONTRACTOR TO INSPECT AND MAINTAIN INTEGRITY OF SILT FENCE UNTIL CONSTRUCTION HAS BEEN COMPLETED AND REVEGETATION HAS TAKEN PLACE.
2. WETLAND DETERMINATION CONDUCTED BY GREEN HILL ENVIRONMENTAL, LLC. IN JULY 2009
3. REFERENCE PLAN ENTITLED "TRACT OF LAND NEAR WORDEN'S POND IN THE TOWN OF SOUTH KINGSTOWN, RI, PROPERTY OF FRANCES M.C. STREETER. SURVEYED & PLATTED OCT., 1967. A.J. EASTERBROOKS, C.E. SCALE 1"=40'"
4. REFERENCE RIDEM-OWTS APPLICATION NUMBER 0932-0665 FOR MORE INFORMATION.



REVISIONS	NUMBER	DATE	MADE BY	CHECKED BY	DESCRIPTION

Anderson Engineering, LLC
CIVIL ... STRUCTURAL ... LAND DEVELOPMENT
WILLIAM M. ANDERSON, P.E.
REGISTERED PROFESSIONAL ENGINEER
190 Cedar Avenue East Greenwich, RI 02818 Voice: (401) 265-6169 / Fax: (401) 884-2880

Proj. Mgr: WMA
Designed: KFC
Drawn: KFC
Checked: WMA
Scale: 1" = 30'
Date: JULY 2009

PRELIMINARY WETLAND DETERMINATION
PLAN FOR
ESTATE OF GEORGE MAIN
A.P. 59-2, LOT 4, 601 SAND TRAIL ROAD
SOUTH KINGSTOWN, RHODE ISLAND

Proj. No.
Dwg. No.
1
Sheet 1 of 1

JUL 29 2009