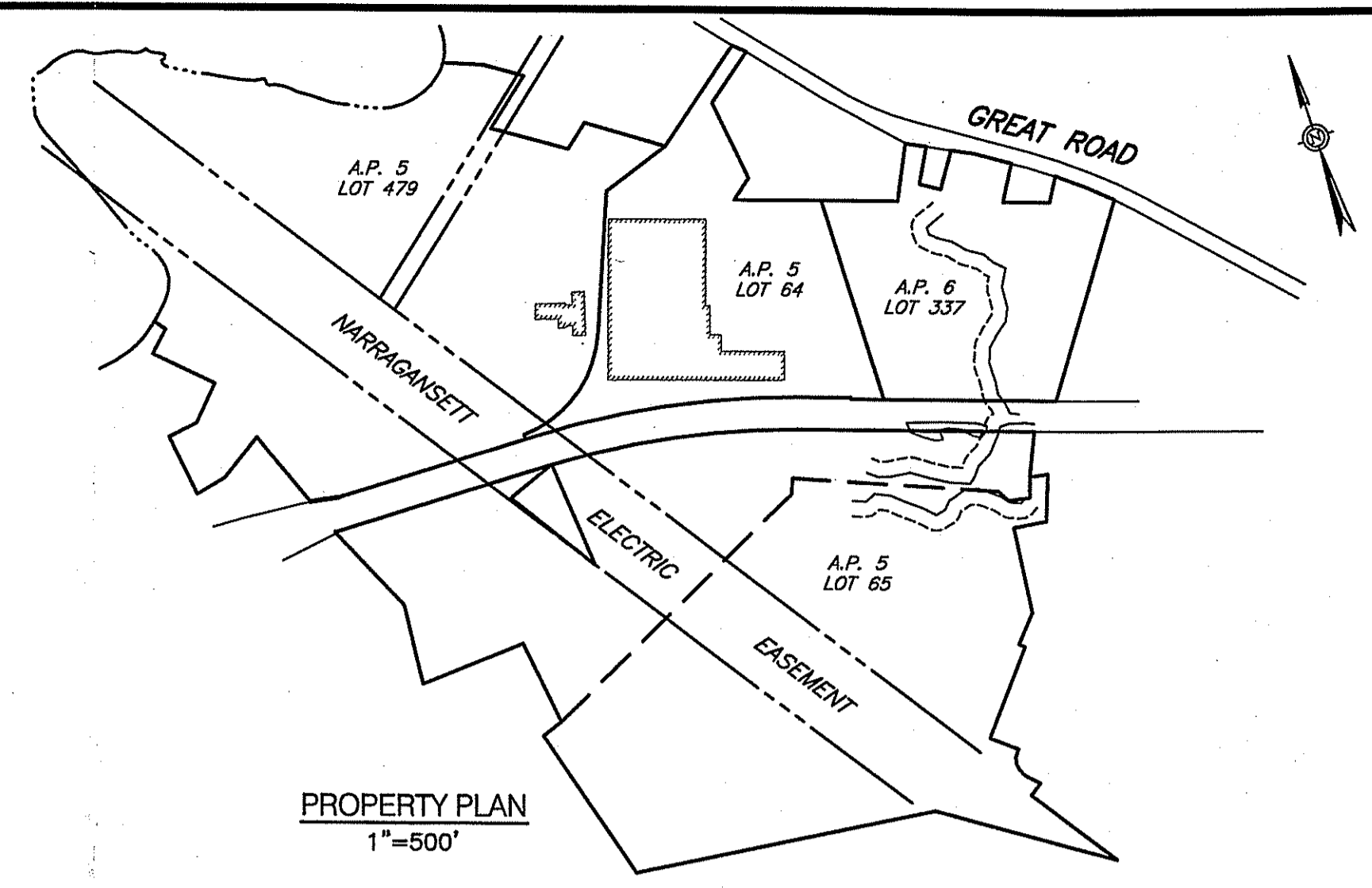


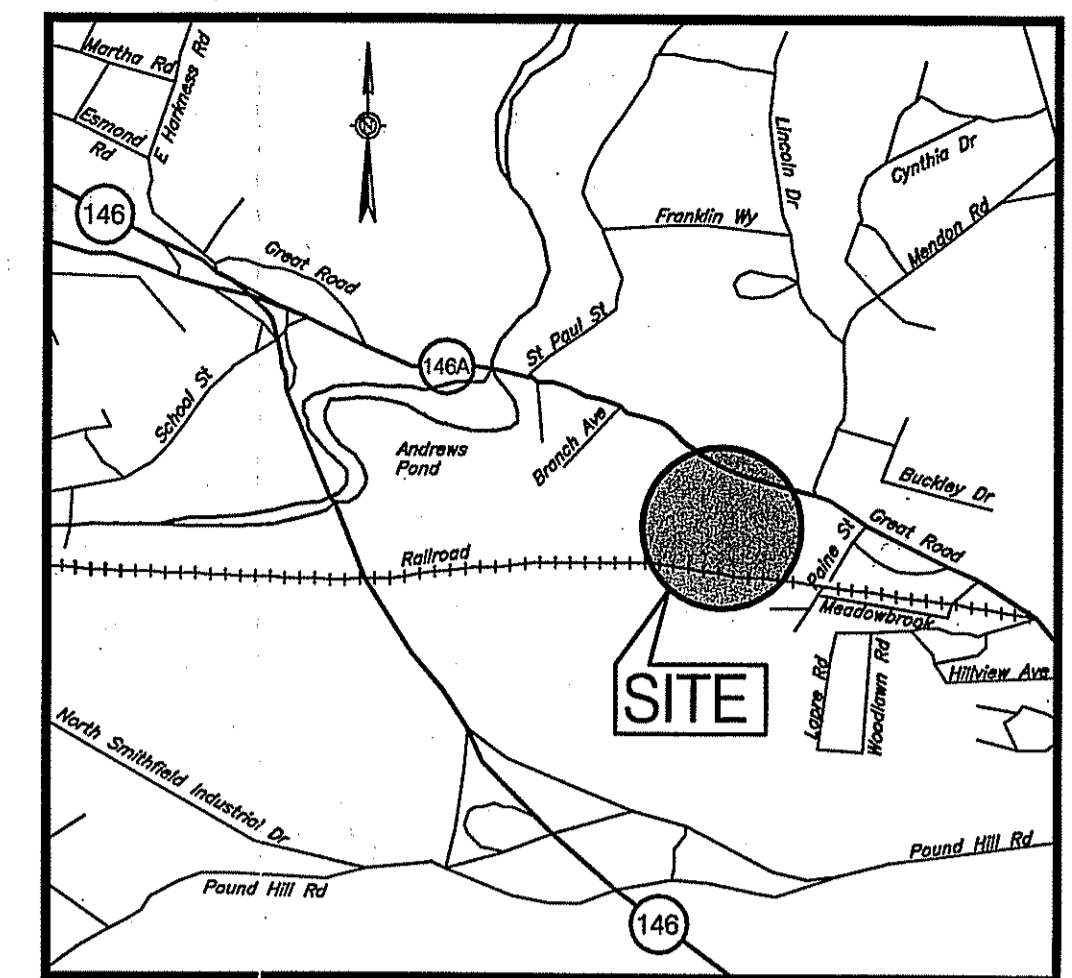
LEGEND:

- R — APPROX. PROPERTY LINE
- E — EASEMENT LINE
- A.P. ASSESSORS PLAT
- N/F NOW OR FORMERLY
- D.B., PG. DEED BOOK, PAGE
- - - - - CONTOUR LINE
- XX.XX SPOT GRADE
- ⊙ SMH SEWER MANHOLE
- ⊙ TELEPHONE MANHOLE
- ⊕ FIRE HYDRANT
- OWG WATER GATE
- x — x — CHAIN LINK FENCE
- o — o — STONE WALL
- - - - - GAS LINE
- - - - - WETLAND FLAG
- ⊥ SIGN

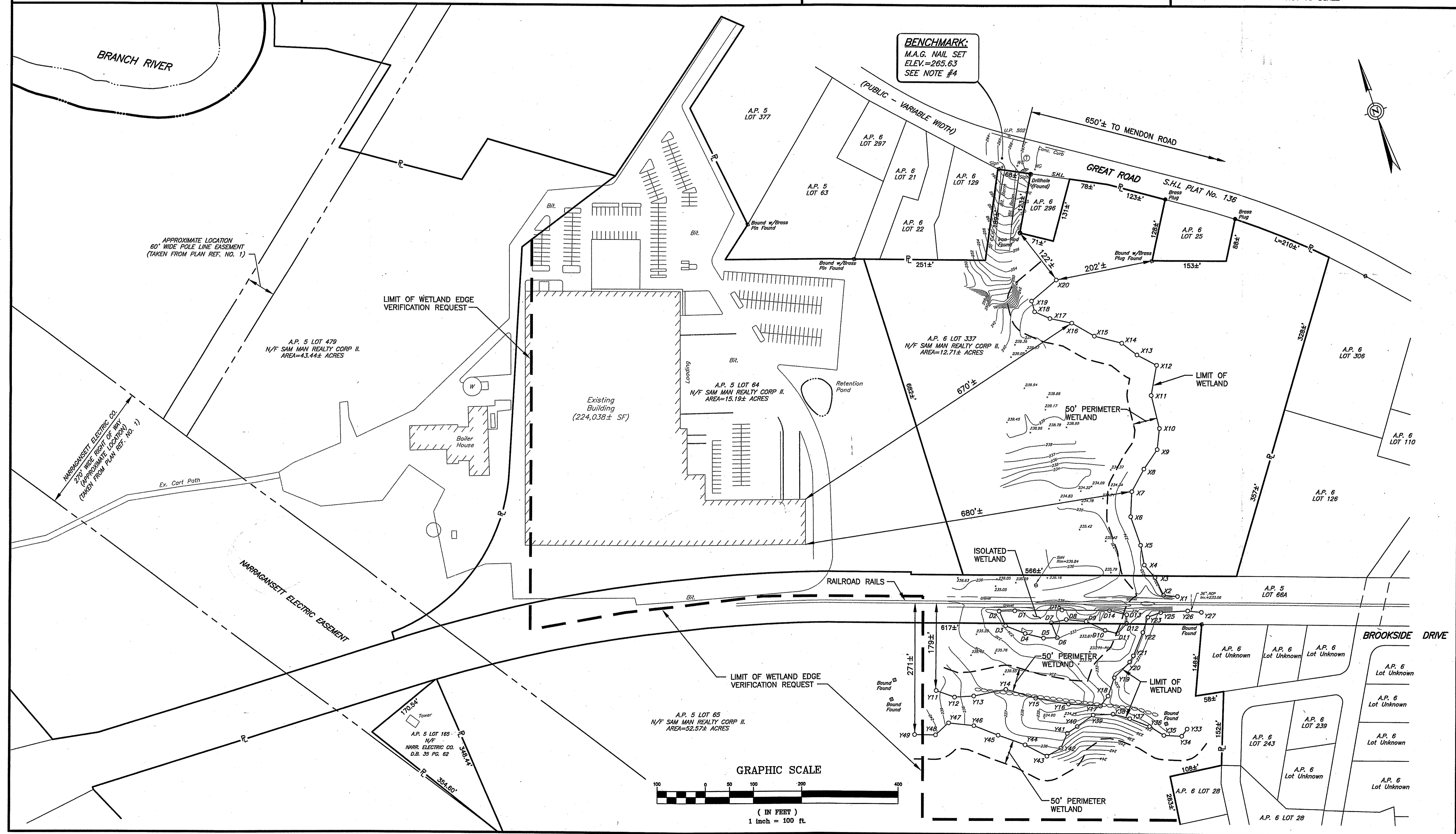


NOTES:

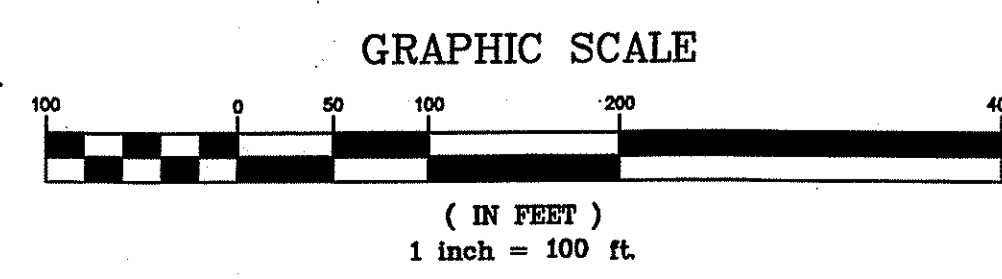
1. FIELD SURVEY OF EXISTING CONDITIONS, TOPOGRAPHY AND WETLAND FLAG LOCATION PERFORMED IN JULY AND AUGUST OF 2008, AND CONFORM TO CL. III R.I. SURVEY STANDARDS.
2. WETLAND FLAGS WERE PLACED BY NATURAL RESOURCE SERVICES INC. IN JULY 2008 AND JANUARY 2009.
3. ALL ELEVATIONS, BENCHMARKS AND NGVD 29 DATUM ORIGINATED FROM A RI GEODETIC SURVEY DISK STAMPED "NS 014".
4. THE AREAS UNDER STUDY ARE LOCATED IN A ZONE X, AREAS DETERMINED TO BE OUTSIDE 500-YEAR FLOOD PLAIN, AS SHOWN ON THE FLOOD INSURANCE RATE MAP, TOWN OF NORTH SMITHFIELD, PROVIDENCE COUNTY, COMMUNITY PANEL NUMBER 440021 0005 C, MAP REVISED: DECEMBER 3, 1993.



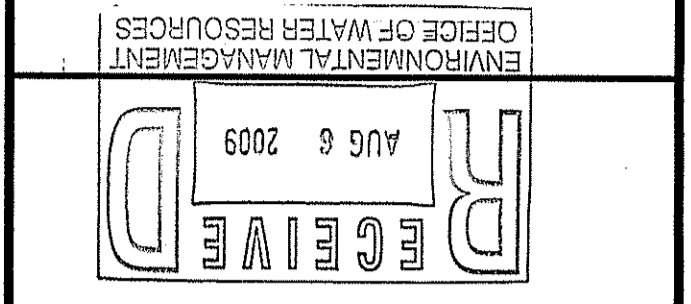
LOCUS MAP
NOT TO SCALE



BENCHMARK:
M.A.G. NAIL SET
ELEV.=265.63
SEE NOTE #4



CROSSMAN ENGINEERING, INC.
151 Centerville Road
Warwick, Rhode Island 02886
Phone: (401) 738-5660 - Fax: (401) 738-8157
Email: cel@crossmaneng.com



STEVEN M. CABRAL
No. 4847
REGISTERED PROFESSIONAL ENGINEER
2/1/09

PROJECT TITLE:
WETLAND VERIFICATION
PLAT MAP 5, LOTS 64, 65 and 479
PLAT MAP 6, LOT 337
582 GREAT ROAD
BRANCH RIVER INDUSTRIAL PARK
NORTH SMITHFIELD, RHODE ISLAND

OWNER:
SAM-MAN REALTY CORPORATION
P.O. BOX 309
235 SINGLETON STREET
WOONSOCKET, RHODE ISLAND 02895

DRAWING TITLE:
WETLAND EDGE VERIFICATION
PLAN IN SELECT AREAS

DATE: APRIL 2009 **SCALE:** 1"=100'
DWG. NAME: 1228-C1.1-WETLAND.dwg

REVISIONS

NUMBER	REMARKS	DATE

DRAWING NUMBER
C1.1
SHEET: 1 OF 1
AGENCY REVIEW SUBMISSION

S:\1228 Branch River Industrial Park\Current\1228-C1.1-WETLAND.dwg, Model: 7/28/2009 8:34:40 AM, 1:100