

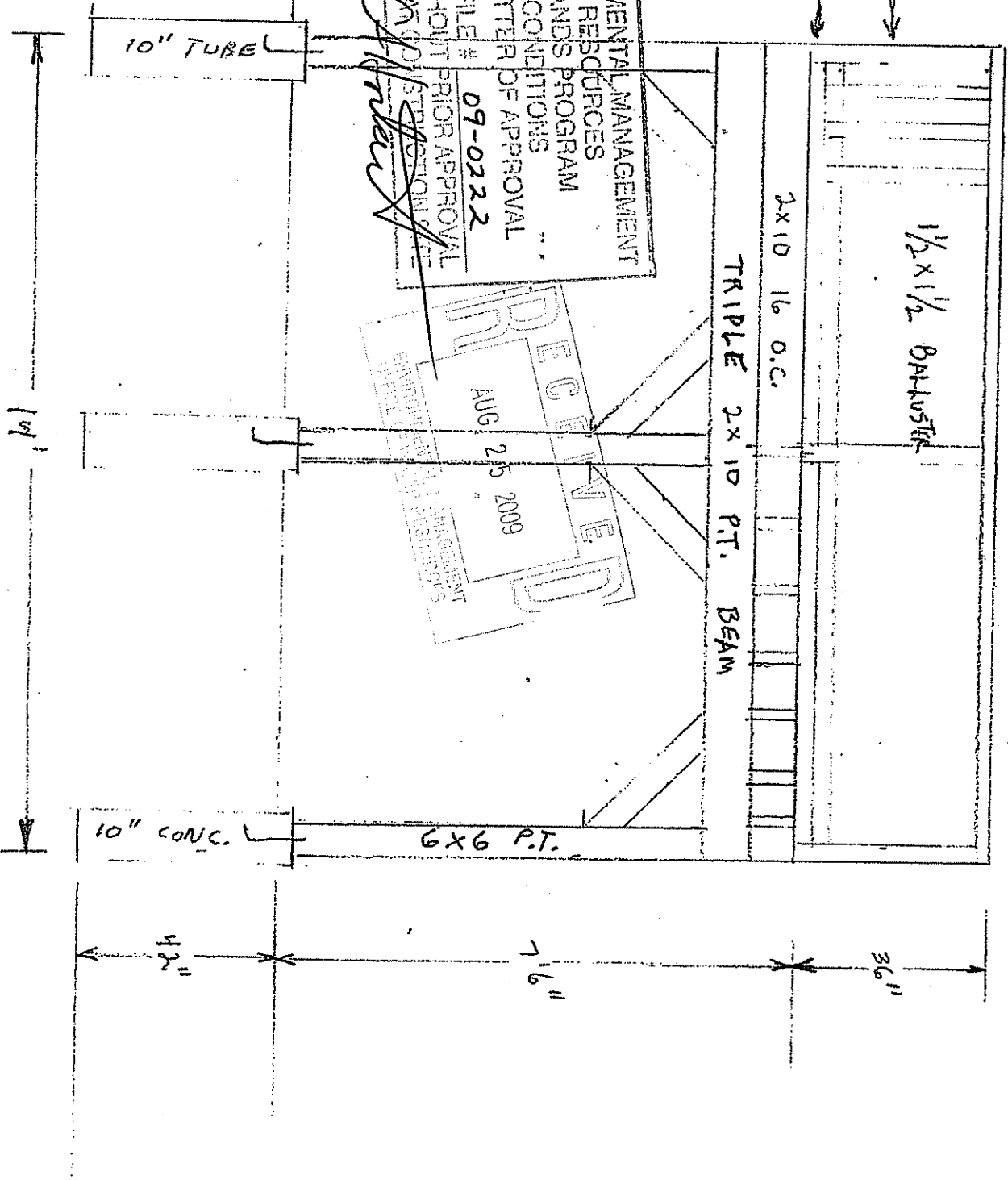
CONSTRUCTION DETAIL

3/8" = 1'

4x4 PT. POST
5/4 x 6
COMPOSITE DECKING

DEPARTMENT OF ENVIRONMENTAL MANAGEMENT
OFFICE OF WATER RESOURCES
FRESHWATER WETLANDS PROGRAM
APPROVED WITH CONDITIONS
AS SPECIFIED IN THE LETTER OF APPROVAL
DATED OCT 19 2009 FILE # 09-0222
NO CHANGES ALLOWED WITHOUT PRIOR APPROVAL
APPROVER: *[Signature]*

RECEIVED
AUG 25 2009
DEPARTMENT OF ENVIRONMENTAL MANAGEMENT
OFFICE OF WATER RESOURCES
FRESHWATER WETLANDS PROGRAM



10" TUBE

1 1/2 x 1/2 BALUSTERS

2x10 16 O.C.

TRIPLE 2x10 PT. BEAM

6x6 PT.

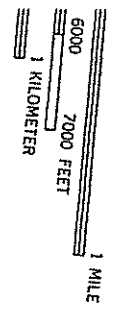
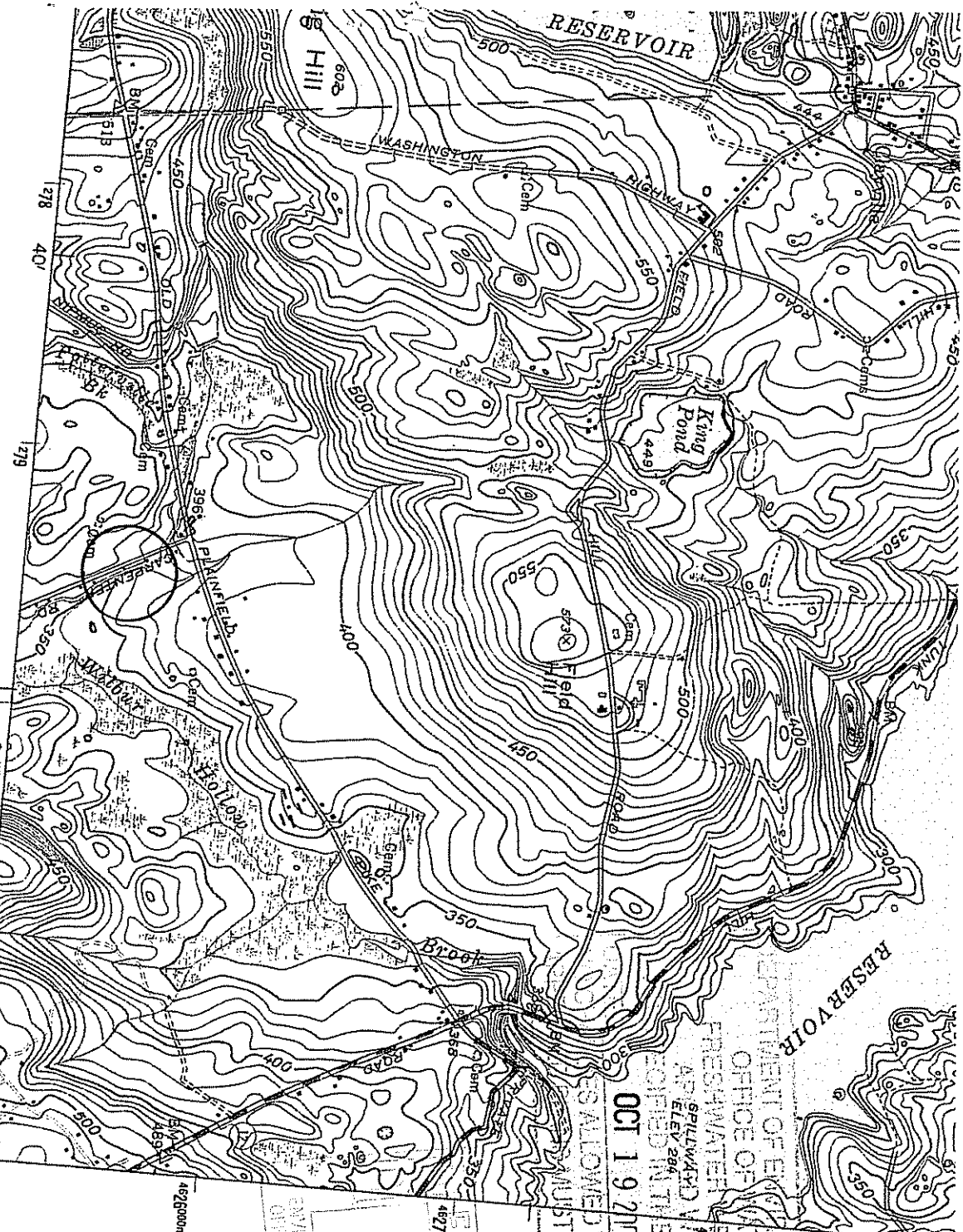
10" CONC.

36"

7 1/6"

4 3/8"

10'



- ROAD CLASSIFICATION**
- Heavy-duty
 - Medium-duty
 - Light-duty
 - Unimproved dirt
- ROAD TYPE**
- U. S. Route
 - State Route



ARDS
C. 20242
E ON REQUEST

CLAYVILLE, R. I.

(GROMPTON)
6667 11 NE

41°45'
281000m E 71°37'30"

4826000m N

RECEIVED
AUG 25 2009
ENVIRONMENTAL MANAGEMENT
OFFICE OF WATER RESOURCES
WETLANDS PROGRAM

DEPARTMENT OF ENVIRONMENTAL MANAGEMENT
OFFICE OF WATER RESOURCES
WETLANDS PROGRAM
FRESHWATER WETLANDS PROGRAM
SPILLWAY WITH HIGH CONDITIONS
ELEV 296
OBTAINED IN THE LETTER OF APPROVAL
OCT 19 2009 FILE # 09-0222
NOT ALLOWED WITHOUT PRIOR APPROVAL
MUST BE MODIFIED AT PROTECTION SITE

[Signature]

DEPARTMENT OF ENVIRONMENTAL MANAGEMENT
 OFFICE OF WATER RESOURCES
 FRESHWATER WETLANDS PROGRAM
 APPROVED WITH CONDITIONS
 AS SPECIFIED IN THE LETTER OF APPROVAL
 DATED OCT 19 2009 FILE # 09-0222
 NO CHANGES ALLOWED WITHOUT PRIOR APPROVAL
 APPROVED PLANS MUST BE AT ALL TIMES IN ACCORDANCE WITH THE LETTER OF APPROVAL

RECEIVED
 AUG 25 2009
 ENVIRONMENTAL MANAGEMENT
 OFFICE OF WATER RESOURCES

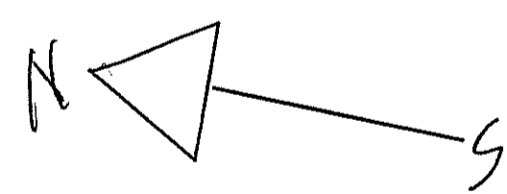
EXISTING 25x30 BARN

POND WITH OUTLET

EXISTING FOOT BRIDGE

RIVER IS INTERMITTENT IN FLOW
 AND VARIES IN WIDTH
 FROM 1' TO 4'

A1	100'	SET BACK TO
A2	100'	STREAM
A3	100'	
A4	100'	



PROPOSED DECKS TO BE BUILT ON
 SIMPLE 10" FOOTINGS HAND DUG
 WITH NO EXCAVATION OR GRADE
 CHANGE REQUIRED

DRAWINGS BY CONTRACTOR
 JAMES P. O'ROURKE
 R.I. REG. # 12037
 SCALE 1/8" = 1'
 26 CARPENTER ROAD
 SCITUATE R.I. 02825
 OWNER DAVE & CHERYL McMAHON

CARPENTER ROAD

CARPENTER ROAD

CARPENTER ROAD

