

MATCHLINE

NORTH SHORE DRIVE



MATCHLINE

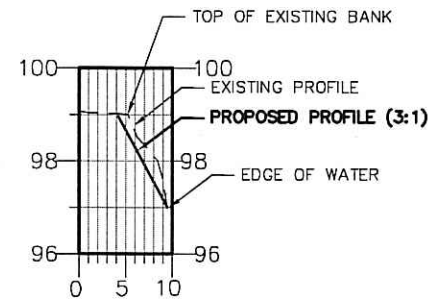
A.P. 93 LOT 20
N/F BARBARA KAFALAS
AREA=0.5± acre

LEGEND

- EXISTING CONTOUR
- 99— PROPOSED CONTOUR
- - - - - PROPERTY LINE
- EROSION CONTROL

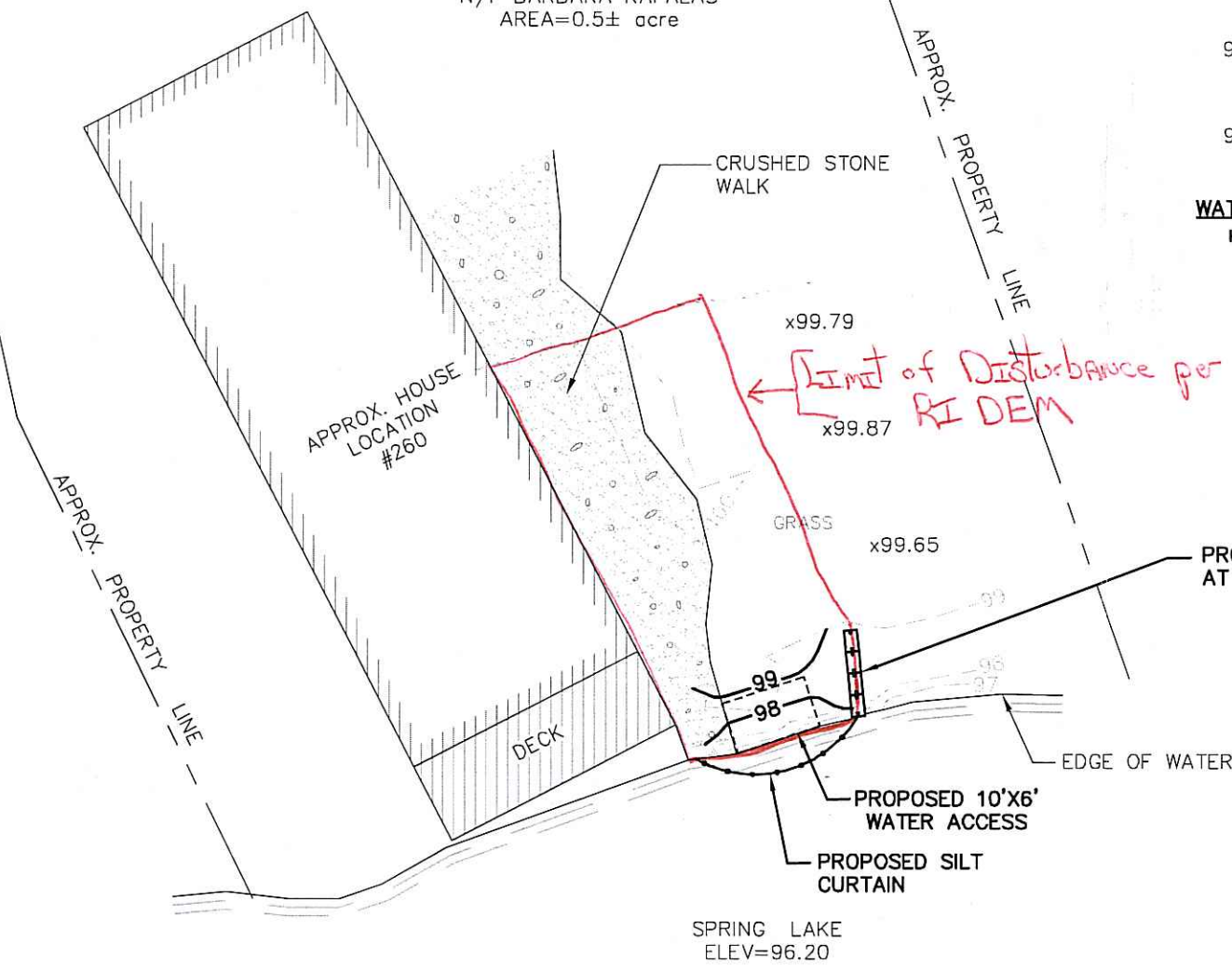
NOTES:

1. TOPOGRAPHY WAS FIELD SURVEYED BY ADVANCED CIVIL DESIGN, INC. DATED NOVEMBER 24, 2009.
2. PROPERTY LINE FROM BURRILLVILLE ASSESSOR MAPS AND SHOULD BE CONSIDERED APPROXIMATE.
3. THE CONTRACTOR SHALL INSTALL THE SILT CURTAIN PRIOR TO LAND DISTURBING ACTIVITIES.

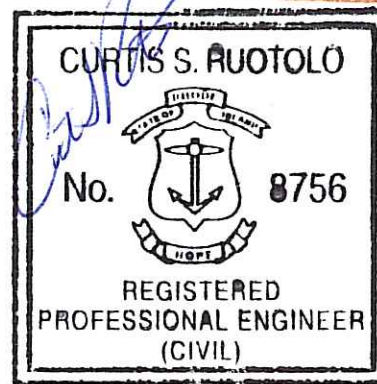
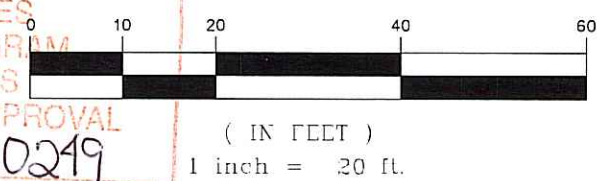


WATER ACCESS PROFILE

HORIZONTAL: 1"=20'
VERTICAL: 1"=4'



DEPARTMENT OF ENVIRONMENTAL MANAGEMENT
OFFICE OF WATER RESOURCES
FRESHWATER WETLANDS PROGRAM
APPROVED WITH CONDITIONS
AS SPECIFIED IN THE LETTER OF APPROVAL
DATED DEC 29 2009 FILE # 09-0249
APPROVED PLANS MUST BE AT CONSTRUCTION SITE



PROPOSED SITE PLAN FOR
WATER ACCESS
A.P. 93 LOT 20
260 NORTH SHORE DRIVE
NOVEMBER 27, 2009

ADVANCED CIVIL DESIGN, INC.
COUNTRY SIDE 1/2 NF
SCITUATE, RI 02857
PH: (401) 644-8000
FAX: (401) 473-4404

