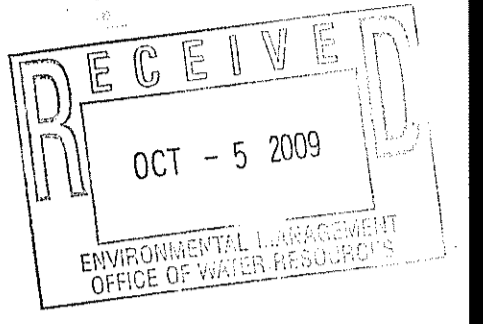
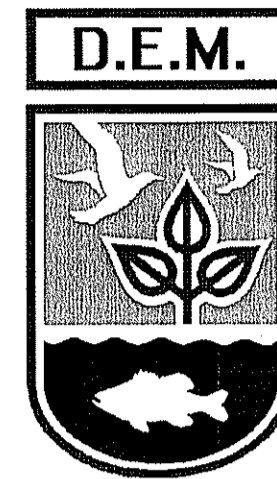
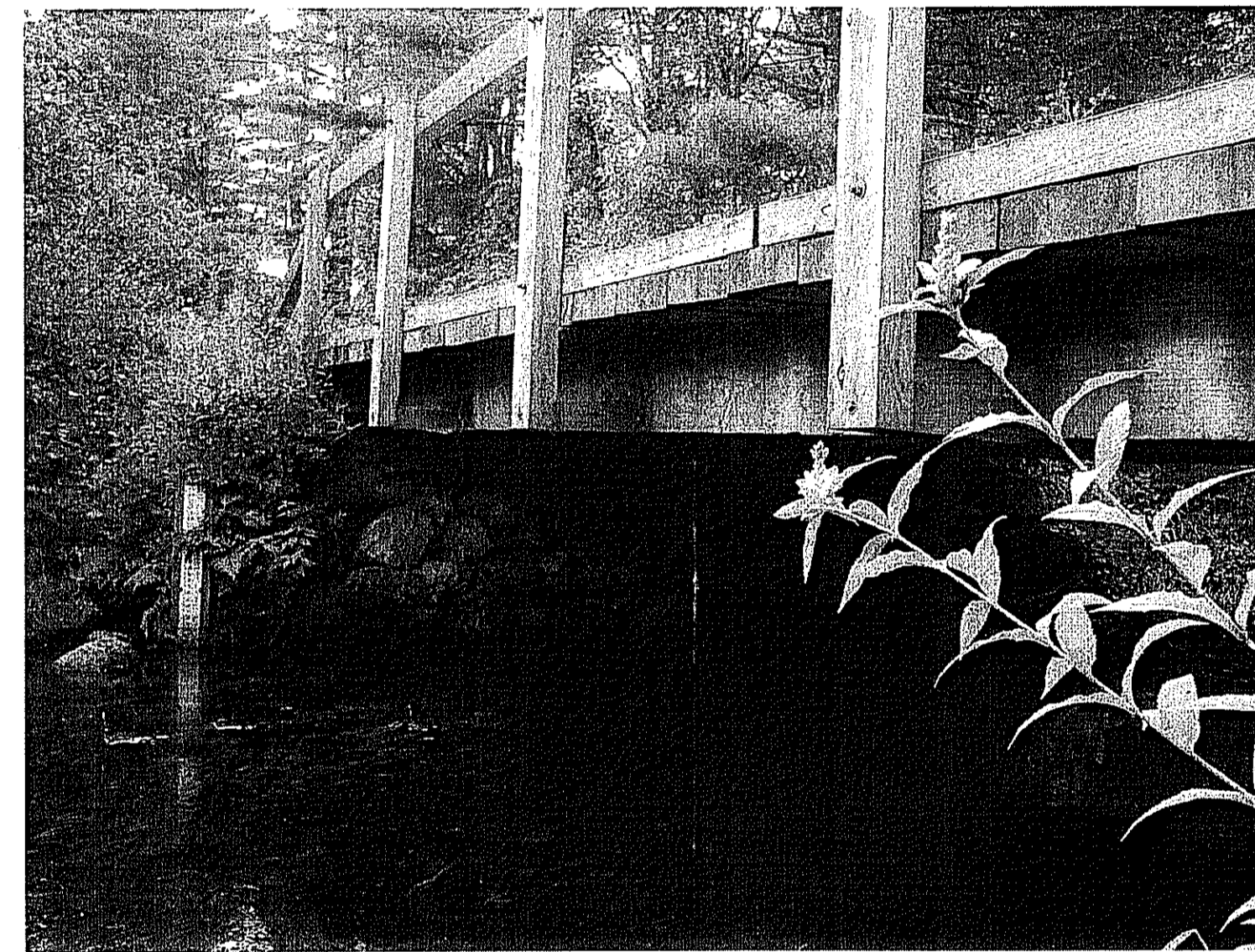
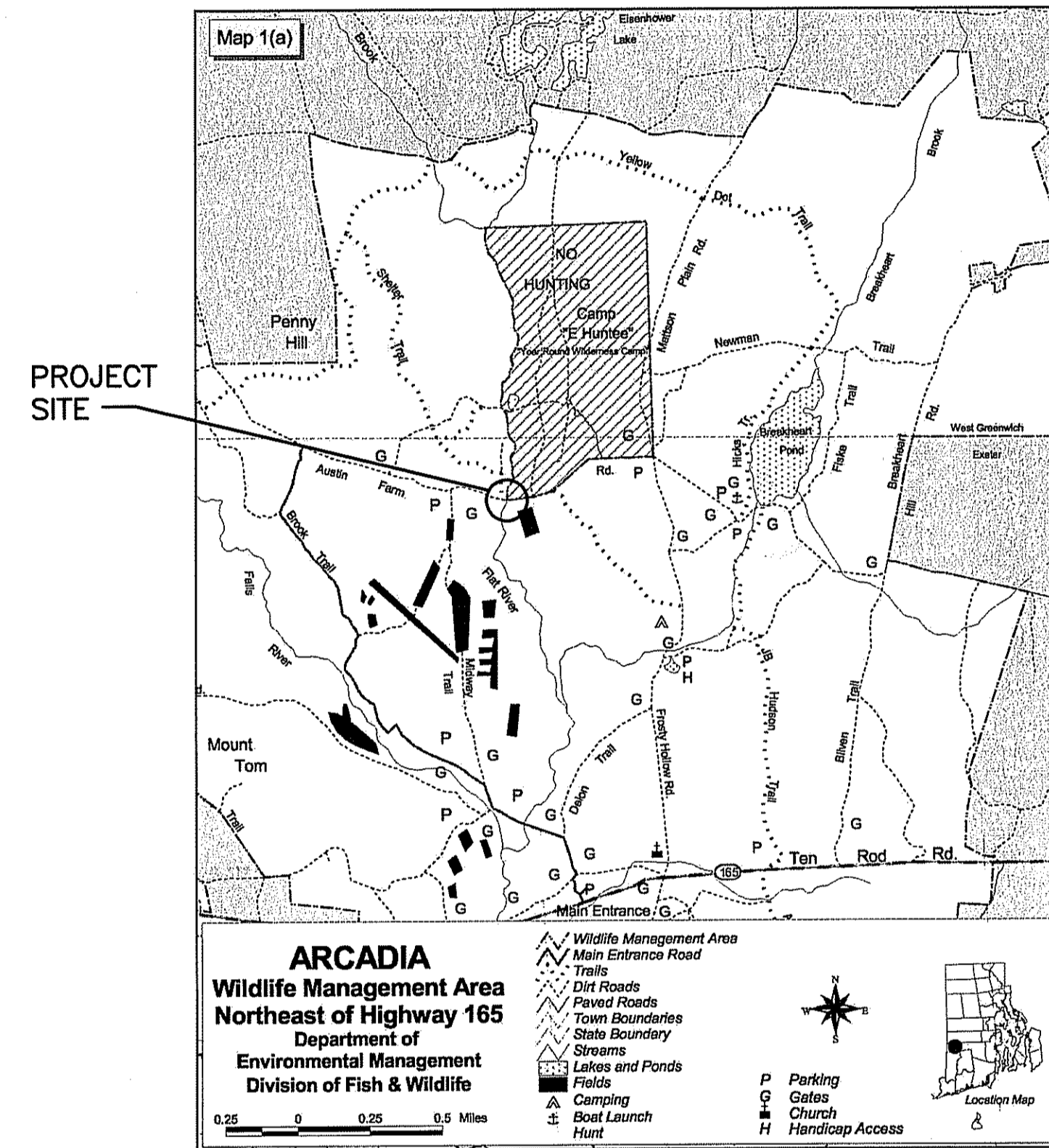


STATE OF RHODE ISLAND DEPARTMENT OF ENVIRONMENTAL MANAGEMENT



PROJECT # 18744



LEWIS CITY BRIDGE
ARCADIA STATE PARK

DRAWING LIST

GENERAL DRAWING LIST

T1 TITLE SHEET

CIVIL DRAWING LIST

C001 NOTES
C101 EXISTING CONDITIONS
C102 DEMOLITION AND SEDIMENT & EROSION CONTROL PLAN
C103 BRIDGE LAYOUT PLAN

STRUCTURAL DRAWING LIST

S101 BRIDGE FRAMING PLAN, SECTIONS & DETAILS

SEPTEMBER 30, 2009
PERMITTING PLANS



Maguire Group Inc.
Architects / Engineers / Planners

225 Chapman Street
Providence, Rhode Island

DEPARTMENT OF ENVIRONMENTAL MANAGEMENT
OFFICE OF WATER RESOURCES
FRESHWATER WETLANDS PROGRAM
APPROVED WITH CONDITIONS
AS SPECIFIED IN THE LETTER OF APPROVAL
DATED NOV 12 2009 FILE # 09-0256
NO CHANGES ALLOWED WITHOUT PRIOR APPROVAL
APPROVED PLANS MUST BE AT CONSTRUCTION SITE

REVIEWED BY: CIVIL INITIALS DATE ARCH: INITIALS DATE STRUC: INITIALS DATE PLUM: INITIALS DATE ELEC: INITIALS DATE

GENERAL NOTES:

- 1. THE CONTRACTOR SHALL MAKE APPLICATION FOR AND PAY ALL FEES FOR PERMITS REQUIRED BY THE TOWN OF EXETER, AND THE STATE OF RHODE ISLAND TO CONSTRUCT THIS PROJECT.
2. THE OWNER SHALL BE IMMEDIATELY NOTIFIED OF ANY DIRECTION RECEIVED FROM UTILITY COMPANIES, STATE OR TOWN EMPLOYEES WHICH COULD AFFECT THE QUALITY OR COST OF WORK (INCREASE OR DECREASE).
3. ALL CONSTRUCTION SHALL BE IN ACCORDANCE WITH THE APPROVED PLANS AND MATERIALS, STANDARD AND SPECIAL DETAILS, AND TECHNICAL SPECIFICATIONS. ANY WORK NOT MEETING THE APPROVED SPECIFICATIONS SHALL BE IMMEDIATELY REMOVED AND REPLACED BY THE CONTRACTOR AT NO ADDITIONAL COST TO THE OWNER.
4. THE CONTRACTOR SHALL MAINTAIN IN THE FIELD UP TO DATE AS-BUILT DRAWINGS OF ALL CONSTRUCTION. UPON COMPLETION OF THE WORK AND PRIOR TO FINAL ACCEPTANCE THE CONTRACTOR SHALL PROVIDE A FULL SIZE SET OF REPRODUCIBLE AS-BUILT DRAWINGS CERTIFIED AS ACCURATELY DEPICTING AS-BUILT CONDITIONS TO THE OWNER.
5. LOCATIONS AND DEPTHS OF EXISTING PIPES, CONDUITS AND STRUCTURES, AS SHOWN, ARE APPROXIMATE ONLY, BASED ON FIELD SURVEYS AND THE BEST AVAILABLE INFORMATION. THE CONTRACTOR SHALL MAKE, AT HIS EXPENSE, SUCH SUPPLEMENTAL INVESTIGATIONS AS HE DEEMS NECESSARY TO DETERMINE THE EXACT LOCATIONS OF UTILITIES AND STRUCTURES. ANY EXPENSE AND/OR DELAY OCCASIONED BY UTILITIES AND STRUCTURES, OR DAMAGE THERETO, INCLUDING THOSE NOT SHOWN, SHALL BE THE RESPONSIBILITY OF THE CONTRACTOR.
6. BEFORE PROCEEDING WITH CONSTRUCTION OPERATIONS, THE CONTRACTOR SHALL NOTIFY DIG SAFE AT 1-800-DIG-SAFE.
7. THE CONTRACTOR SHALL BE RESPONSIBLE TO COORDINATE ALL CONSTRUCTION WITH ALL THE UTILITY COMPANIES THROUGH THEIR DESIGNATED CONTACTS, KEEPING THE OWNER INFORMED AND COPIED ON ALL CORRESPONDENCE.
8. WHERE EXISTING MATERIALS ARE ENCOUNTERED WHICH, IN THE OPINION OF THE ENGINEER, ARE UNSUITABLE FOR BEDDING OR OTHER INTENDED USE, SUCH MATERIALS SHALL BE REMOVED AND REPLACED WITH SUITABLE MATERIAL, AS SPECIFIED OR AS OTHERWISE DIRECTED.
9. ALL EXISTING PIPE, STRUCTURES, EXCESS AND MISCELLANEOUS MATERIALS REMOVED DURING THE COURSE OF WORK, EXCEPT SALVAGEABLE ITEMS, SHALL BE LEGALLY DISPOSED OF OFF OF THE PROJECT SITE.
10. COPIES OF PERMITS, LICENSES AND OTHER REGULATORY APPROVALS OBTAINED BY THE OWNER ARE INCLUDED IN THE CONTRACT DOCUMENTS. IT IS THE RESPONSIBILITY OF THE CONTRACTOR TO BE FAMILIAR WITH THE APPLICABLE PROVISIONS OF EACH AS THEY APPLY TO THE WORK.
11. THE CONTRACTOR SHALL PLACE CONSTRUCTION DEBRIS CONTROL DEVICES, BOOMS, TARPULINS, FLOATS, STAGING, AND OTHER DEVICES AS NECESSARY TO PREVENT CONSTRUCTION DEBRIS FROM ENTERING THE WATER, AND AIR BORNE MATERIALS FROM LEAVING THE IMMEDIATE VICINITY OF THE SITE. THE CONTRACTOR SHALL BE RESPONSIBLE FOR CLEAN-UP OF ANY MATERIALS DEPOSITED OUTSIDE THE WORK AREA AND IN THE WATER. SEE PERMIT CONDITIONS.

DEMOLITION NOTES:

- 1. INSTALL TEMPORARY SECURITY/CONSTRUCTION FENCE AS DIRECTED BY THE OWNER'S REPRESENTATIVE OR THE OWNER.
2. REMOVE AND DISPOSE THE EXISTING TIMBER BRIDGE, SLABS, CONCRETE, SITE FEATURES AND STRUCTURES CALLED OUT ON THE DRAWINGS.
3. VERIFY THE STATUS (ACTIVE OR ABANDONED) OF ALL UTILITIES BEFORE PROCEEDING WITH THE WORK. ASSURE THAT ONLY INACTIVE OR ABANDONED UTILITIES ARE CUT, DISRUPTED OR REMOVED.
4. PLUG ALL ABANDONED PIPES AND CONDUITS WHERE EXPOSED BY EXCAVATIONS OR REMOVAL OF STRUCTURES, FOUNDATIONS OR UTILITIES. USE CAUTION WHEN CUTTING LINES.
5. ANY UNDERGROUND UTILITIES ABANDONED IN PLACE THAT DO NOT REQUIRE REMOVAL DUE TO CONSTRUCTION SHALL BE FILLED WITH CONCRETE.
6. NOTIFY ALL UTILITY AUTHORITIES, COMPANIES AND AGENCIES PRIOR TO PERFORMING ANY WORK ON OR NEAR THEIR LINES. COMPLY WITH ALL REGULATIONS. COMPLY WITH "DIG SAFE" REQUIREMENTS. VERIFY SIZES, LOCATIONS AND DEPTHS OF ALL UTILITIES. PERFORM TEST PITS AS NECESSARY.
7. COMPLY WITH ALL FEDERAL, STATE AND LOCAL HAULING, DISPOSAL AND SAFETY REGULATIONS.
8. ALL EXCAVATIONS AND DEPRESSIONS RESULTING FROM DEMOLITION AND REMOVAL TO BE REFILLED WITH COMPACTED GRANULAR FILL FROM ON-SITE SOURCES OR BORROW, AS DIRECTED.

GENERAL STRUCTURAL NOTES:

- 1. THE CONTRACTOR SHALL VERIFY ALL EXISTING CONDITIONS AND DIMENSIONS IN THE FIELD, BEFORE ORDERING ANY MATERIAL, COMMENCING ANY FABRICATION, OR PERFORMING ANY WORK. HE SHALL NOTIFY THE ENGINEER, IN WRITING, OF ANY CONDITIONS OR DIMENSIONS WHICH VARY FROM THOSE SHOWN ON THE DRAWINGS AND INCORPORATE SUCH VARIATIONS IN THE CONSTRUCTION AS APPROVED BY THE ENGINEER.
2. THE CONTRACTOR SHALL EXERCISE ALL NECESSARY CARE TO PREVENT ANY DAMAGE TO EXISTING CONSTRUCTION BY OR AS A RESULT OF HIS OPERATIONS. ANY DAMAGES RESULTING FROM THE CONTRACTOR'S OPERATIONS SHALL BE REPAIRED AS DIRECTED BY THE ENGINEER AT NO ADDITIONAL COST TO THE OWNER.
3. THE CONTRACTOR SHALL HAVE SOLE RESPONSIBILITY FOR PROVIDING ALL MATERIALS, EQUIPMENT, AND TOOLS. THE OWNER DOES NOT PROVIDE SECURITY SERVICES AND ASSUMES NO RESPONSIBILITY OR LIABILITY FOR ANY MATERIALS, EQUIPMENT OR TOOLS STORED ON ITS PROPERTY.
4. THE CONTRACTOR WILL BE REQUIRED TO PREVENT MATERIAL FROM FALLING IN ANY OF THE AREAS UNDERNEATH OR ADJACENT TO THE WORK AREA.
5. THE CONTRACTOR IS RESPONSIBLE FOR THE SAFE AND PROPER DISPOSAL OF ALL MATERIALS AND SHALL OBTAIN ALL NECESSARY LICENSES AND PERMITS FOR SUCH DISPOSAL. NO MATERIAL IS TO BE DEPOSITED INTO THE RIVER.
6. THE CONTRACTOR WORK AREA AND LAY DOWN AREA SHALL BE AS INDICATED IN THE DRAWINGS AND AS DIRECTED BY THE OWNER. THE WORK AREA AND LAY DOWN AREA WILL BE AVAILABLE FOR THE CONTRACTOR'S USE.

CONCRETE NOTES:

- 1. ALL CONCRETE SHALL BE AIR ENTRAINED HAVING A MINIMUM ULTIMATE COMPRESSIVE STRENGTH f'c = 4,000 PSI AT 28 DAYS. REFER TO THE PROJECT SPECIFICATIONS FOR ADDITIONAL REQUIREMENTS.
2. ALL CONCRETE WORK SHALL CONFORM TO THE BUILDING CODE REQUIREMENTS FOR REINFORCED CONCRETE, ACI 318-02.
3. REINFORCING STEEL SHALL CONFORM TO ASTM A-615, GRADE 60 WITH EPOXY COATING CONFORMING TO ASTM A775/A775M.
4. PROVIDE CONCRETE COVER FROM FACE OF CONCRETE TO MAIN REINFORCEMENT OF 3", UNLESS OTHERWISE NOTED ON THE DRAWINGS.
5. BAR PLACING SHALL CONFORM TO THE CONCRETE REINFORCING STEEL INSTITUTE'S RECOMMENDED PRACTICE FOR PLACING REINFORCING BARS.
6. REINFORCING BARS SHALL BE DETAILED IN ACCORDANCE WITH THE LATEST ACI MANUAL OF STANDARD PRACTICE FOR DETAILING REINFORCED CONCRETE STRUCTURES (ACI 315).
7. EXPOSED CORNERS OF CONCRETE SHALL HAVE A 3/4" x 45' CHAMFER UNLESS OTHERWISE NOTED.
8. CARBON STEEL EMBEDMENTS SHALL BE HOT-DIPPED GALVANIZED IN ACCORDANCE WITH ASTM A123 OR A153 AS APPLICABLE.

TIMBER NOTES:

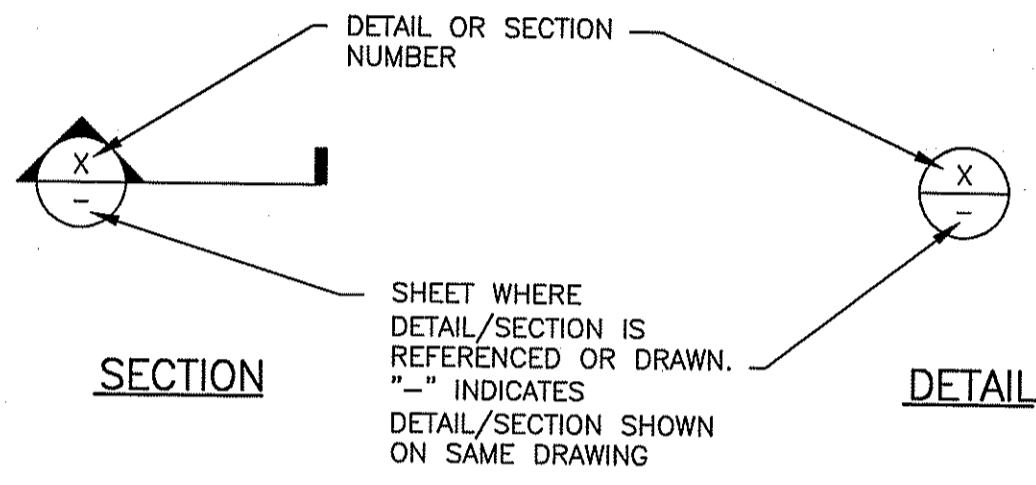
- 1. TIMBER FOR STRINGERS SHALL BE SOLID SAWN LUMBER (S4S), SOUTHERN YELLOW PINE GRADE NO. 1 OR BETTER (Fb=1650 PSI) AND SHALL BE TREATED WITH ACQ TO A MINIMUM RETENTION OF 0.6 LBS PER CUBIC FOOT.
2. TIMBER FOR DECKING AND RAILING SHALL BE SOLID SAWN LUMBER (S4S), SOUTHERN YELLOW PINE GRADE NO. 2 OR BETTER (Fb=1050 PSI) AND SHALL BE TREATED WITH ACQ TO A MINIMUM RETENTION OF 0.6 LBS PER CUBIC FOOT.
3. ALL HARDWARE SHALL BE HOT-DIPPED GALVANIZED IN ACCORDANCE WITH ASTM A123 OR A153 AS APPLICABLE.
4. ALL BOLTS SHALL BE ASTM 307 WITH OGEE WASHERS UNLESS OTHERWISE NOTED.
5. BOLTS SHALL BE COUNTERSUNK INTO TIMBER WHERE NOTED. FILL COUNTERSINKS IN HORIZONTAL SURFACES WITH POLYURETHANE ELASTOMERIC SEALANT.

STRUCTURAL AND MISCELLANEOUS STEEL NOTES:

- 1. ALL STEEL WORK SHALL BE PERFORMED ACCORDING TO THE AISC SPECIFICATIONS FOR THE DESIGN, FABRICATION, AND ERECTION OF STRUCTURAL STEEL FOR BUILDINGS.
2. MATERIAL SHALL CONFORM TO THE FOLLOWING, UON:
A. ANGLES, BARS AND PLATES..... ASTM A36
B. ROLLED SHAPES..... ASTM A992, GRADE 50
3. ALL METALS INCLUDING BEAMS, BOLTS, WASHERS, NUTS, ANGLES, INSERTS, PLATES, ETC. SHALL BE GALVANIZED BY THE HOT-DIPPED PROCESS IN ACCORDANCE WITH THE REQUIREMENTS OF ASTM A123 OR A153, AS APPLICABLE, AFTER FABRICATION.
4. FIELD TREAT DAMAGED GALVANIZED FINISH AND EXPOSED THREADED SURFACES WITH TWO COATS OF ZINC RICH PAINT CONFORMING TO ASTM A780.

STRUCTURAL ABBREVIATIONS

Table with 4 columns: ALUMINUM AND ANGLE(S) APPROXIMATELY AT CAST IN PLACE CENTERLINE CHANNEL CONCRETE CONTINUOUS DIAMETER DOWN DRAWING(S) EACH FACE EACH WAY ELEVATION EMBEDMENT, EMBEDDED EXISTING FIBERGLASS REINFORCED PIPE FINISH GALVANIZED HIGH POINT HORIZONTAL; ALUM. & L's. APPROX. @ C.I.P. C CONC. CONT. DIA. # DN. DWG., DWG'S. E.F. E.W. EL. EMBED. EXIST. FRN. GALV. H.P. HORIZ.; INVERT JOINT KIPS PER SQUARE INCH LOW POINT MANHOLE MANUFACTURER MAXIMUM MEAN HIGH WATER MEAN LOW WATER MINIMUM NOT TO SCALE ON CENTER POUNDS PER SQUARE FOOT POUNDS PER SQUARE INCH REINFORCEMENT REQUIRED ROADWAY SQUARE FEET SPECIFICATIONS STAINLESS STEEL SURFACE FOUR SIDES TOP AND BOTTOM TYPICAL UNLESS OTHERWISE NOTED VERTICAL WELDED WIRE FABRIC WITH WORK POINT; INV. JT. KSI L.P. M.H. MANUF. MAX. MHW. MIN. MLW. MIN. N.T.S. O.C. PSI REINFORCING ROADWAY RDWY. SQ. FT. SPECS. S.S. (S4S) T&B TYP. U.O.N. VERT. W.W.F. W/P.



RECEIVED OCT - 5 2009



Maguire Group Inc. Architects/Engineers/Planners 225 Chapman Street Providence, Rhode Island 401-272-6000 www.maguiregroup.com PROJECT MANAGER: Jim Jackson ext. 245 jjackson@maguiregroup.com

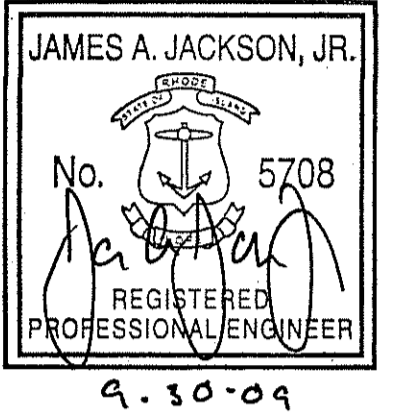


Table with 3 columns: REVISIONS, Number, Description, Date

ISSUED FOR: PERMITTING 9-30-09

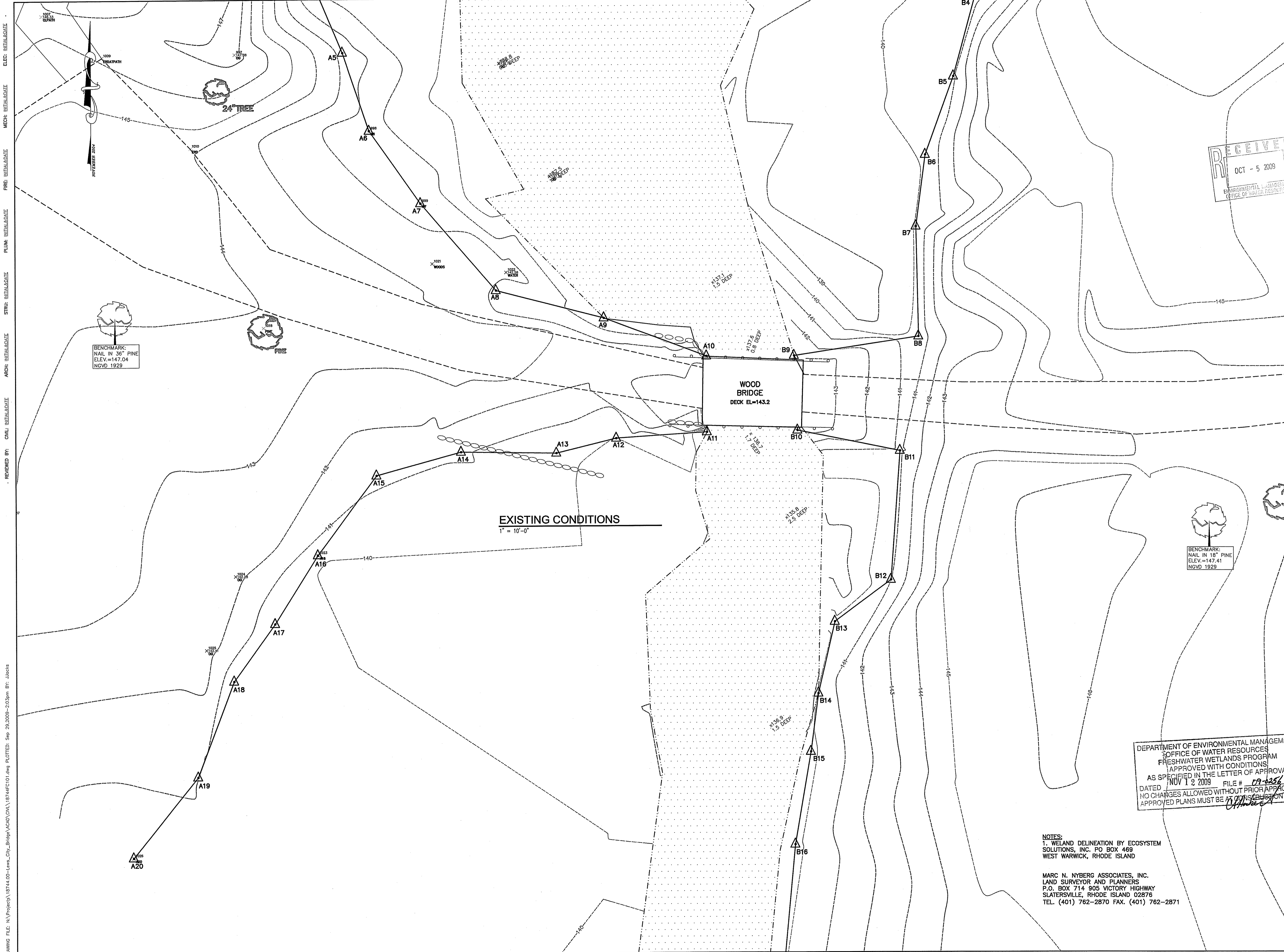
LEWIS CITY BRIDGE ARCADIA STATE PARK

NOTES

DEPARTMENT OF ENVIRONMENTAL MANAGEMENT OFFICE OF WATER RESOURCES FRESHWATER WETLANDS PROGRAM APPROVED WITH CONDITIONS SPECIFIED IN THE LETTER OF APPROVAL NOV 12 2009 FILE # 09-0256 CHANGES ALLOWED WITHOUT PRIOR APPROVAL APPROVED PLANS MUST BE AT CONSTRUCTION SITE

PROJECT NO.: 18744 DESIGNED BY: JAJ DRAWN BY: KC CHK'D BY: JMM DATE: SEPTEMBER 30, 2009 SCALE: 1"=10'-0"

SHEET NO.: C001 SHEET 2 OF 6



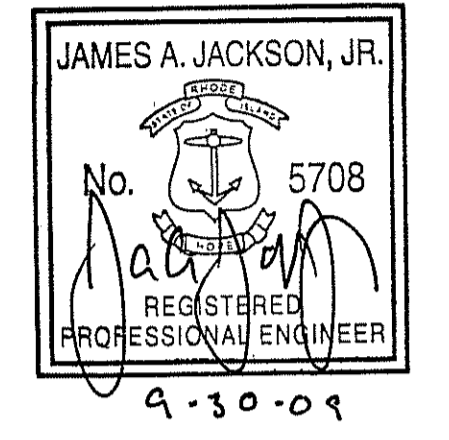
DRAWING FILE: N:\Projects\18744.00-Lewis_City_Bridge\ACAD\DWG\18744FC101.dwg PLOTTED: Sep 29, 2009 - 2:03pm BY: Jjacks
 REVIEWED BY: CIVIL: INTERRADGAGE ARCH: INTERRADGAGE STRU: INTERRADGAGE PLUM: INTERRADGAGE FIRE: INTERRADGAGE MECH: INTERRADGAGE ELEC: INTERRADGAGE

RECEIVED
 OCT - 5 2009
 ENVIRONMENTAL MANAGEMENT
 OFFICE OF WATER RESOURCES



Maguire Group Inc.
 Architects / Engineers / Planners
 225 Chapman Street
 Providence, Rhode Island
 401-272-6000
 www.maguiregroup.com

PROJECT: Jim Jackson
 ext. 245
 MANAGER: jackson@maguiregroup.com



REVISIONS

Number	Description	Date

ISSUED FOR:
 PERMITTING
 9-30-09

LEWIS CITY BRIDGE
ARCADIA STATE
PARK

EXISTING CONDITIONS

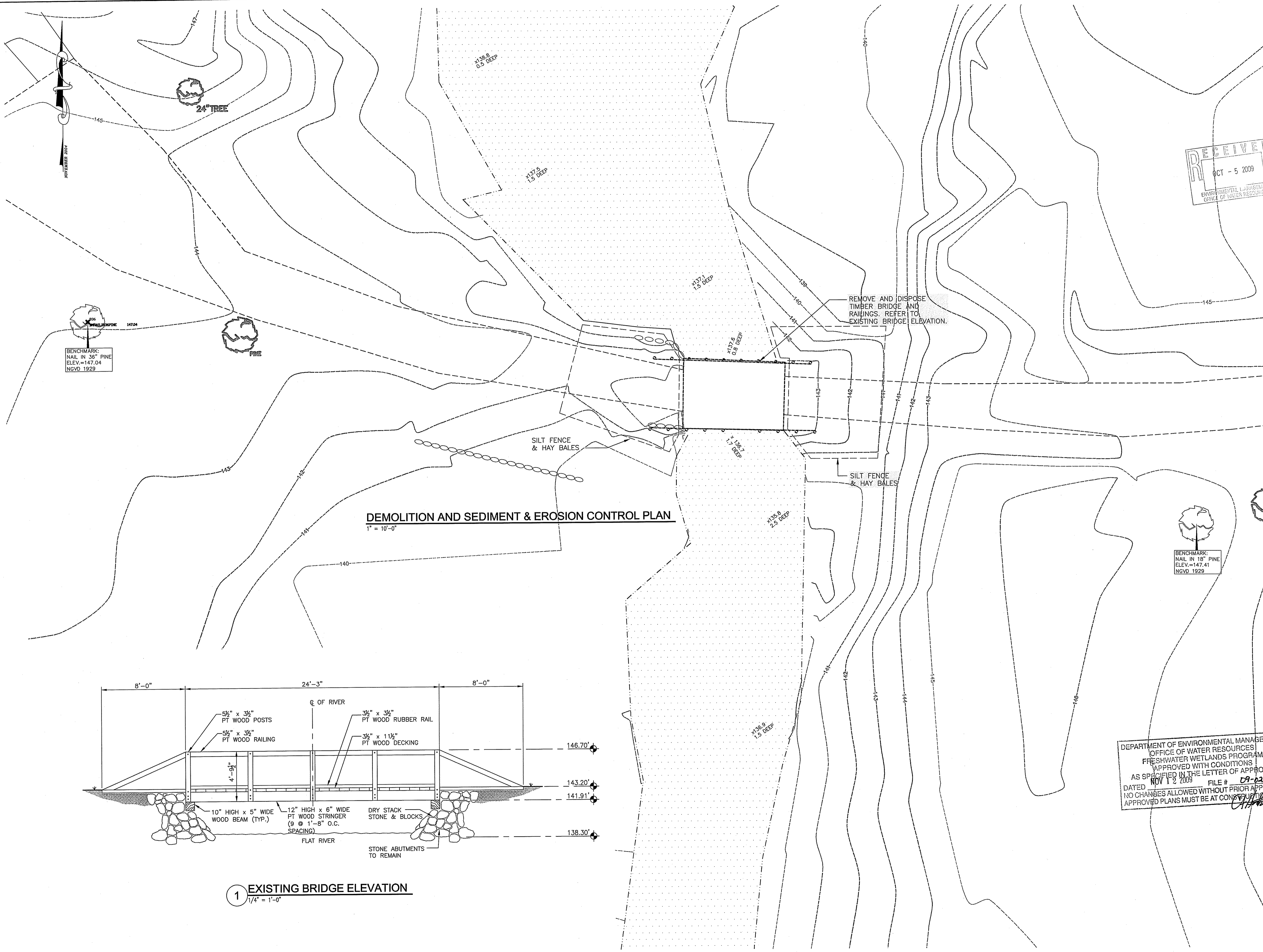
DEPARTMENT OF ENVIRONMENTAL MANAGEMENT
 OFFICE OF WATER RESOURCES
 FRESHWATER WETLANDS PROGRAM
 APPROVED WITH CONDITIONS
 AS SPECIFIED IN THE LETTER OF APPROVAL
 DATED NOV 12 2009 FILE # 09-6256
 NO CHANGES ALLOWED WITHOUT PRIOR APPROVAL
 APPROVED PLANS MUST BE AT THIS LOCATION ON SITE

NOTES:
 1. WELAND DELINEATION BY ECOSYSTEM SOLUTIONS, INC. PO BOX 469 WEST WARWICK, RHODE ISLAND
 MARC N. NYBERG ASSOCIATES, INC. LAND SURVEYOR AND PLANNERS P.O. BOX 714 905 VICTORY HIGHWAY SLATERSVILLE, RHODE ISLAND 02876 TEL. (401) 762-2870 FAX. (401) 762-2871

PROJECT NO.: 18744
 DESIGNED BY: JAJ
 DRAWN BY: KC
 CHK'D BY: JMM
 DATE: SEPTEMBER 30, 2009
 SCALE: 1"=10'-0"

SHEET NO.:
C101

DRAWING FILE: H:\Projects\18744-00-Lewis_City_Bridge\18744-00-Lewis_City_Bridge\18744-00-Lewis_City_Bridge.dwg PLOTTED: Sep 29, 2009 - 2:09pm BY: Jjacks



RECEIVED
OCT - 5 2009
ENVIRONMENTAL MANAGEMENT
OFFICE OF WATER RESOURCES

JAMES A. JACKSON, JR.
No. 5708
REGISTERED
PROFESSIONAL ENGINEER
4-30-09

REVISIONS

Number	Description	Date

**ISSUED FOR:
PERMITTING
9-30-09**

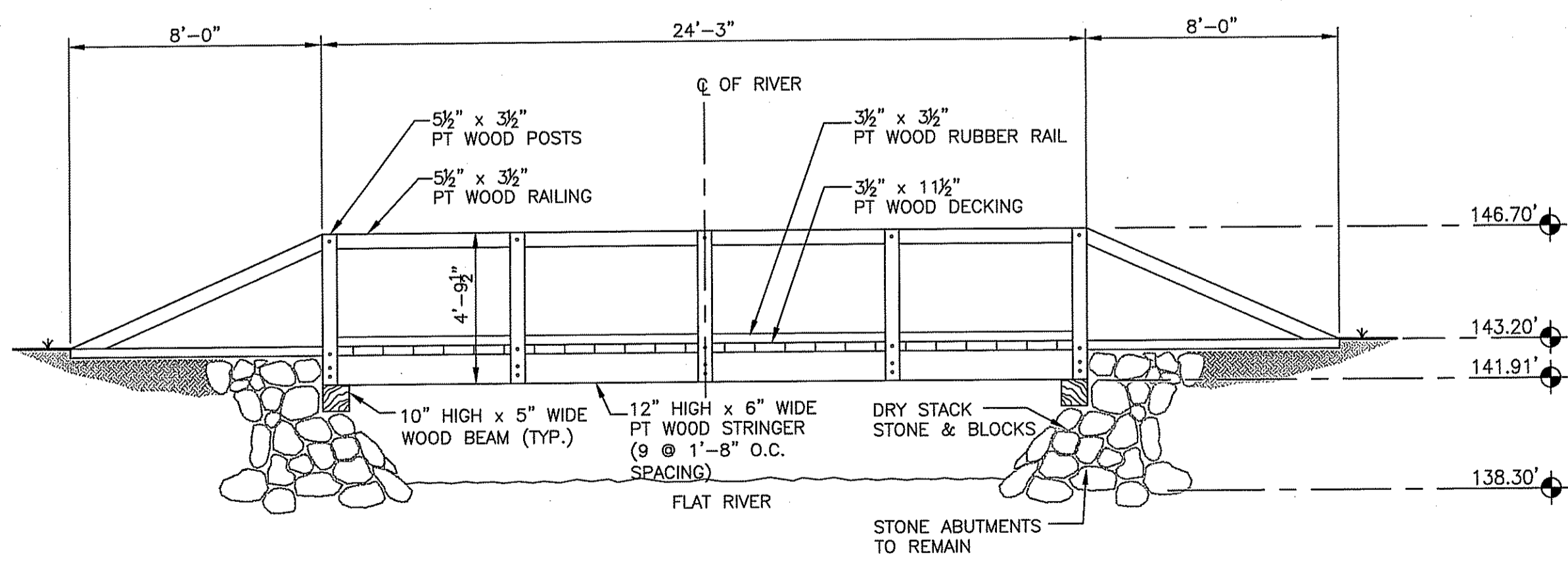
**LEWIS CITY BRIDGE
ARCADIA STATE
PARK**

**DEMOLITION AND
SEDIMENT & EROSION
CONTROL PLAN**

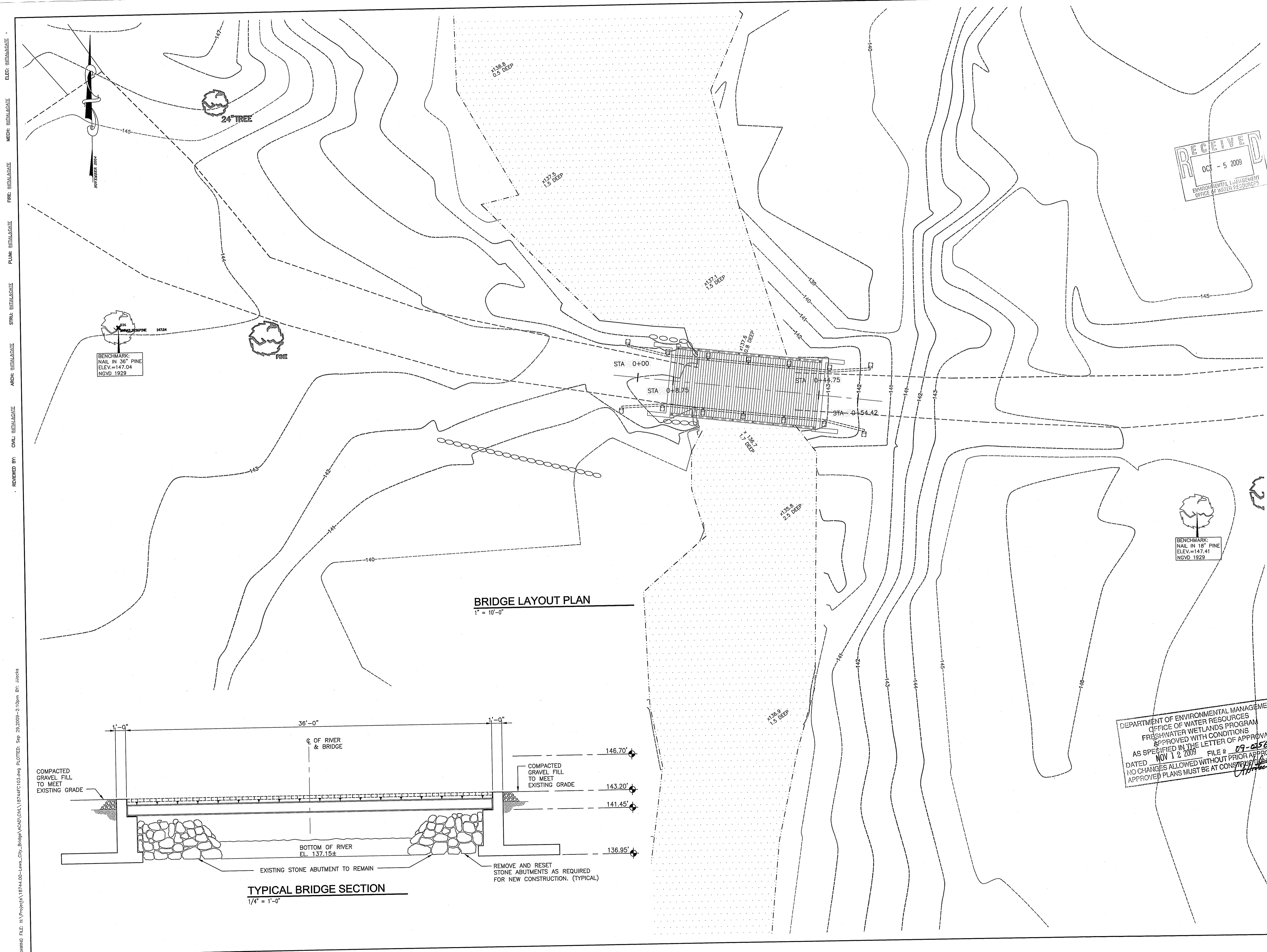
PROJECT NO.: 18744
DESIGNED BY: JAJ
DRAWN BY: KC
CHK'D BY: JMM
DATE: SEPTEMBER 30, 2009
SCALE: 1"=10'-0"

SHEET NO.:
C102
SHEET 4 OF 6

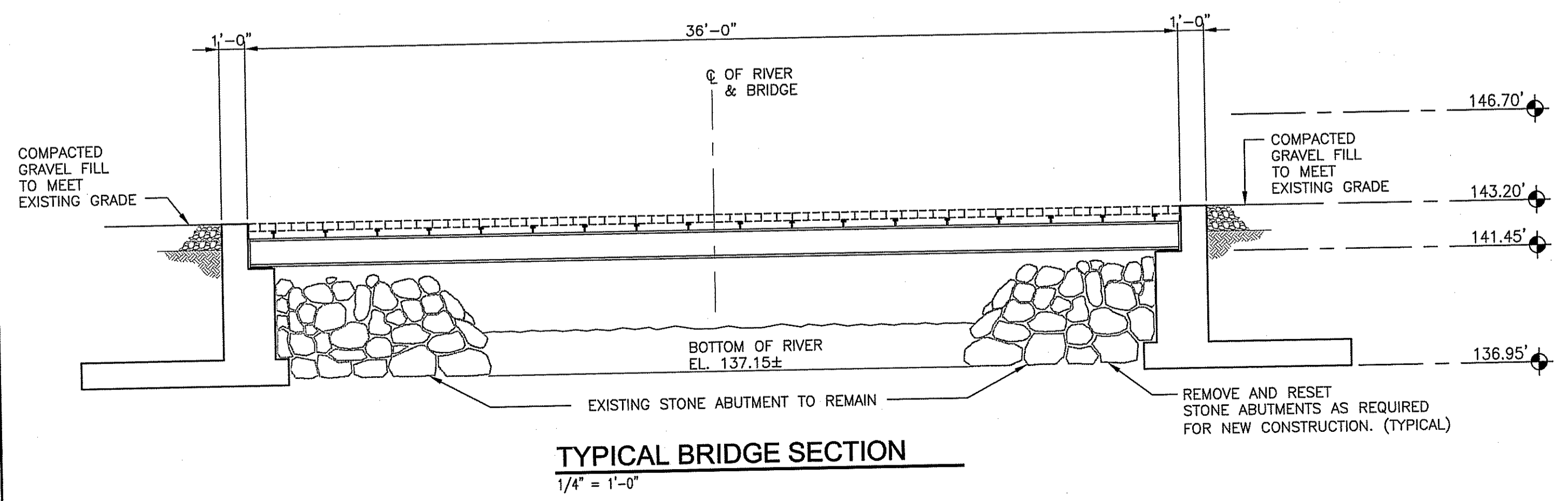
DEPARTMENT OF ENVIRONMENTAL MANAGEMENT
OFFICE OF WATER RESOURCES
FRESHWATER WETLANDS PROGRAM
APPROVED WITH CONDITIONS
AS SPECIFIED IN THE LETTER OF APPROVAL
DATED NOV 18 2009 FILE # 09-0256
NO CHANGES ALLOWED WITHOUT PRIOR APPROVAL
APPROVED PLANS MUST BE AT CONSTRUCTION SITE



1 EXISTING BRIDGE ELEVATION
1/4" = 1'-0"



BRIDGE LAYOUT PLAN
1" = 10'-0"



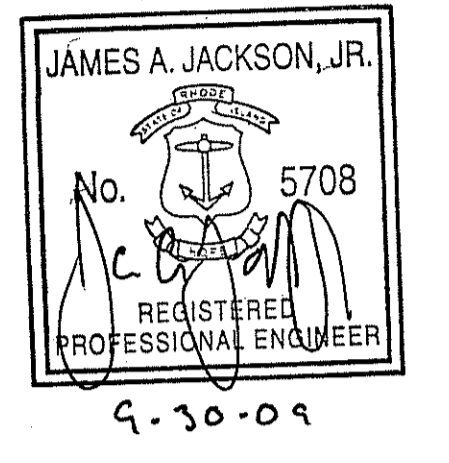
TYPICAL BRIDGE SECTION
1/4" = 1'-0"

RECEIVED
OCT - 5 2009
ENVIRONMENTAL MANAGEMENT
OFFICE OF WATER RESOURCES



Maguire Group Inc.
Architects / Engineers / Planners
225 Chapman Street
Providence, Rhode Island
401-272-6000
www.maguiregroup.com

PROJECT: Jim Jackson
MANAGER: ext. 245
jjackson@maguiregroup.com



REVISIONS

Number	Description	Date

**ISSUED FOR:
PERMITTING
9-30-09**

**LEWIS CITY BRIDGE
ARCADIA STATE
PARK**

**BRIDGE
LAYOUT PLAN**

DEPARTMENT OF ENVIRONMENTAL MANAGEMENT
OFFICE OF WATER RESOURCES
FRESHWATER WETLANDS PROGRAM
APPROVED WITH CONDITIONS
AS SPECIFIED IN THE LETTER OF APPROVAL
DATED **NOV 12 2009** FILE # **09-056**
NO CHANGES ALLOWED WITHOUT PRIOR APPROVAL
APPROVED PLANS MUST BE AT CONSTRUCTION
Approved

PROJECT NO.: 18744
DESIGNED BY: JAJ
DRAWN BY: KC
CHK'D BY: JMM
DATE: SEPTEMBER 30, 2009
SCALE: 1"=10'-0"

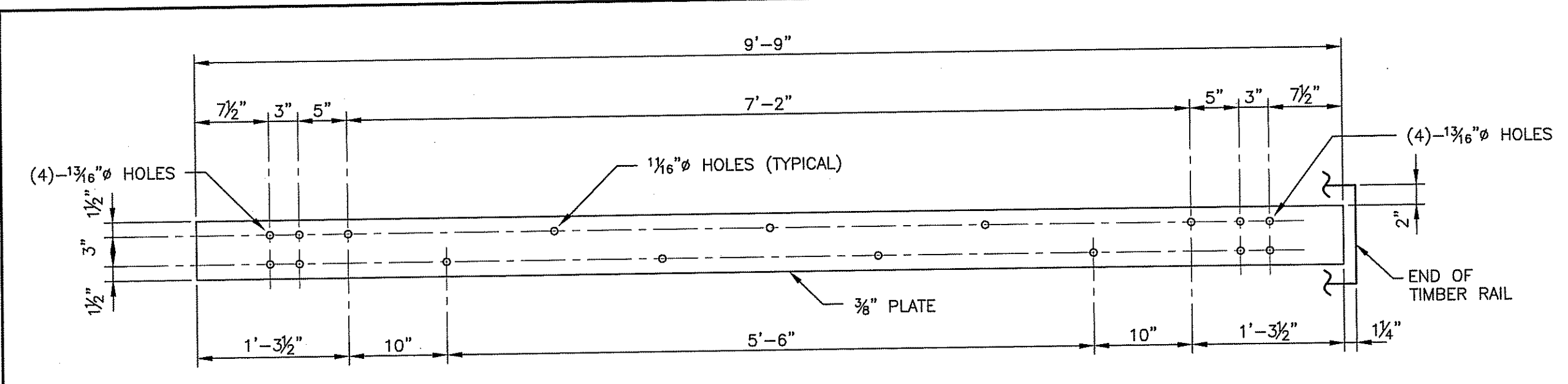
SHEET NO.:

C103

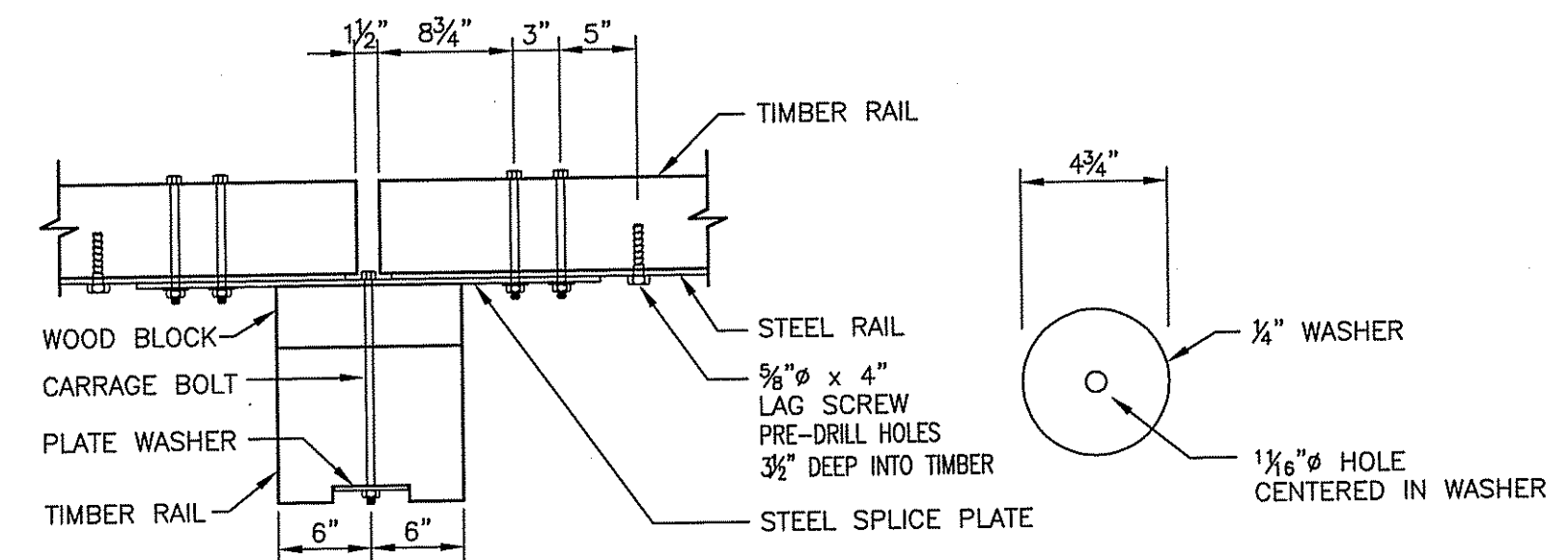
DRAWING FILE: \\N:\Projects\18744-00-Lewis_City_Bridge\WCD\Civil\18744-F103.dwg PLOTTED: Sep 29 2009 - 2:10pm BY: Jjacks

ELEC: INITIAL/DATE
MECH: INITIAL/DATE
PUMP: INITIAL/DATE
STR: INITIAL/DATE
ARCH: INITIAL/DATE
REVIEWED BY: CIVIL INITIAL/DATE

ELEC: INTERLACADE
 MECH: INTERLACADE
 FIRE: INTERLACADE
 PLUMB: INTERLACADE
 STRUCT: INTERLACADE
 ARCH: INTERLACADE
 CIVIL: INTERLACADE
 REVIEWED BY:



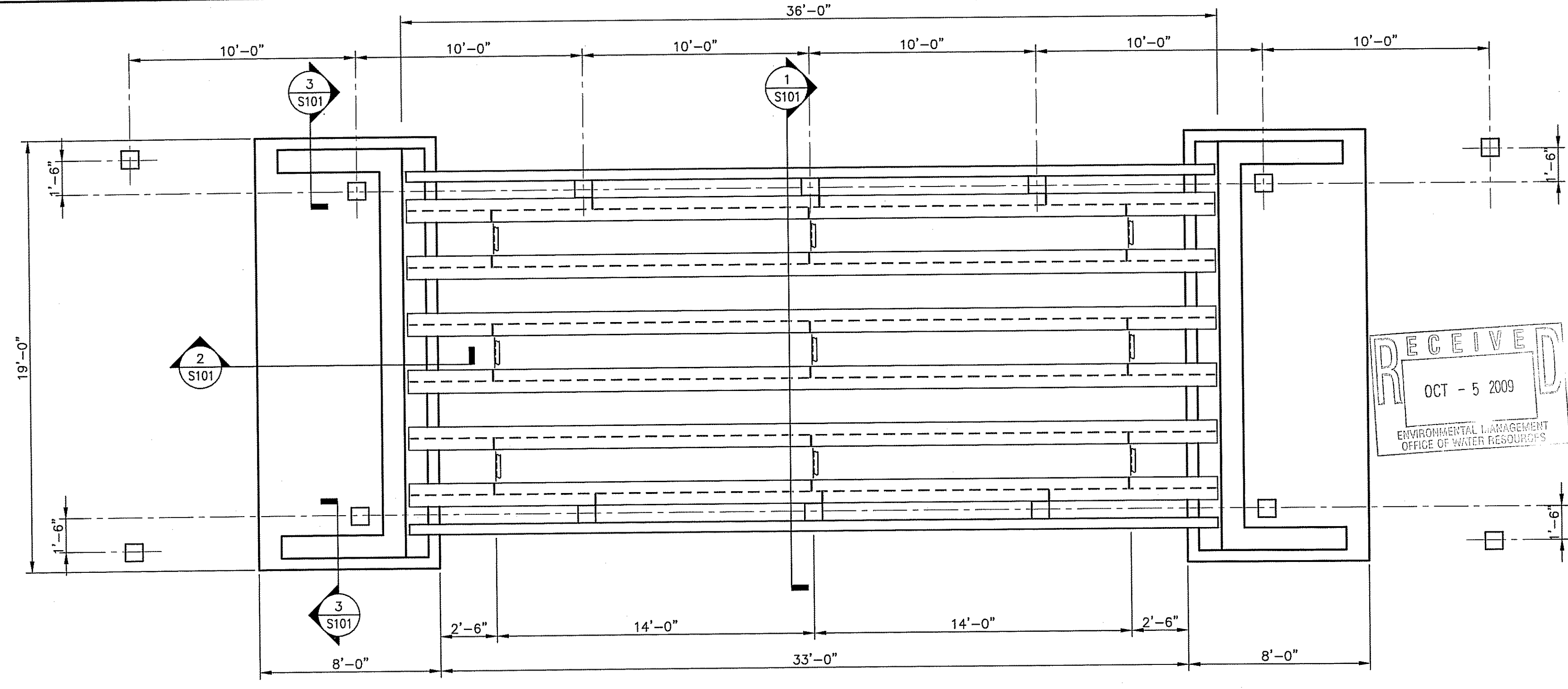
STEEL RAIL DETAIL
1" = 1'-0"



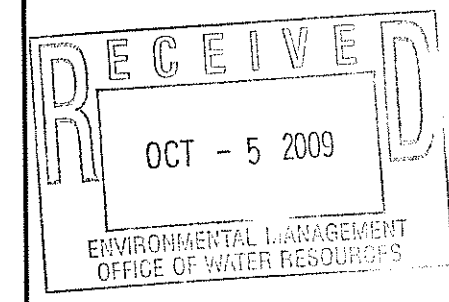
POST CONNECTION PLAN
1" = 1'-0"

PLATE WASHER DETAIL
1" = 1'-0"

STEEL SPLICE PLATE DETAIL
1" = 1'-0"

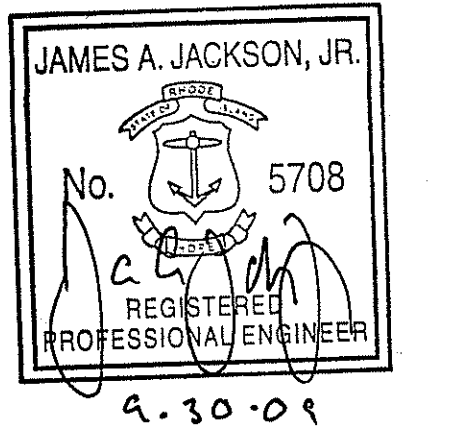


BRIDGE FRAMING PLAN
1/4" = 1'-0"



Maguire Group Inc.
Architects / Engineers / Planners
225 Chapman Street
Providence, Rhode Island
401-272-6000
www.maguiregroup.com

PROJECT: Jim Jackson
MANAGER: ext. 245
jackson@maguiregroup.com



Number	Description	Date

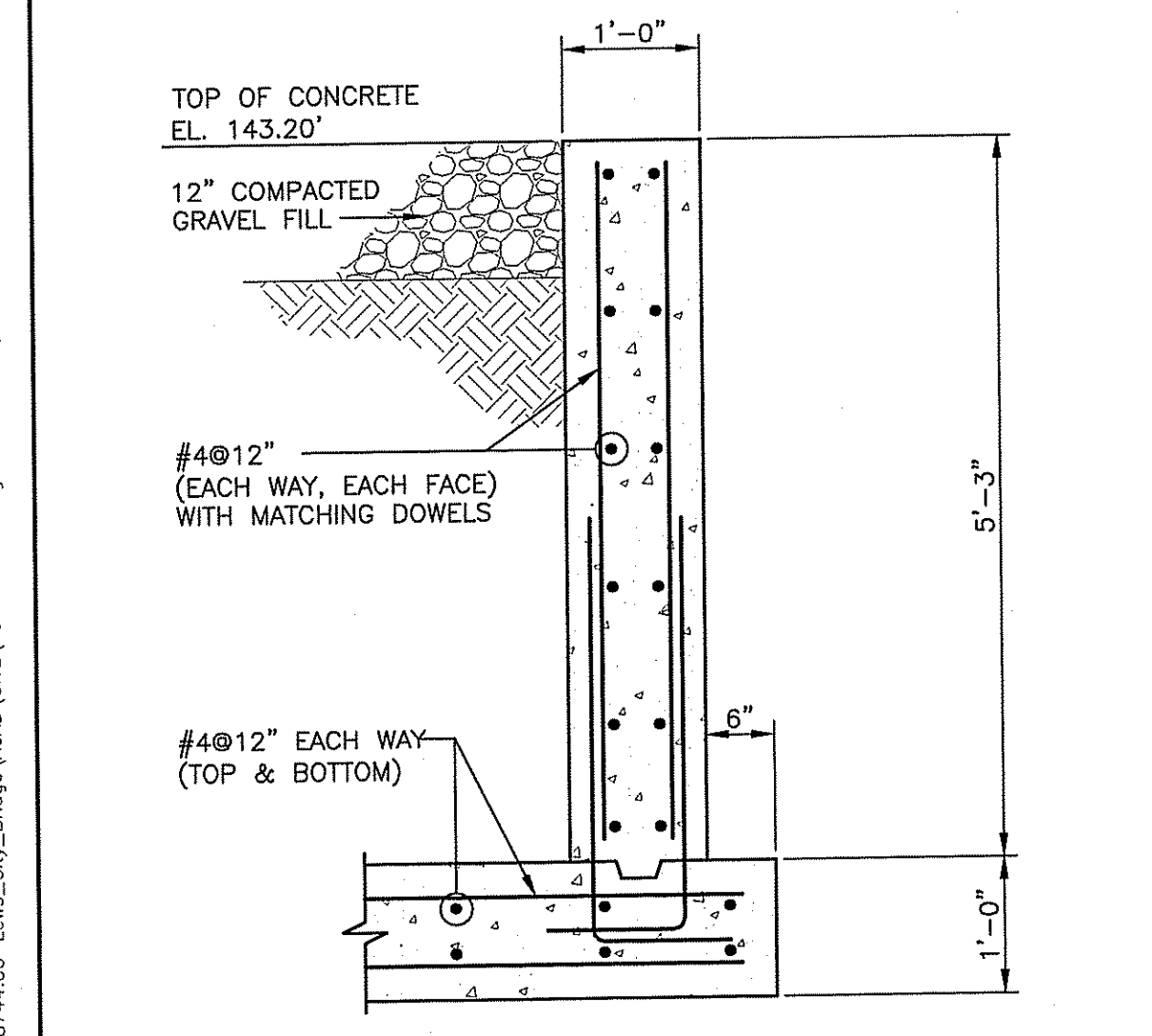
**ISSUED FOR:
PERMITTING
9-30-09**

**LEWIS CITY BRIDGE
ARCADIA STATE
PARK**

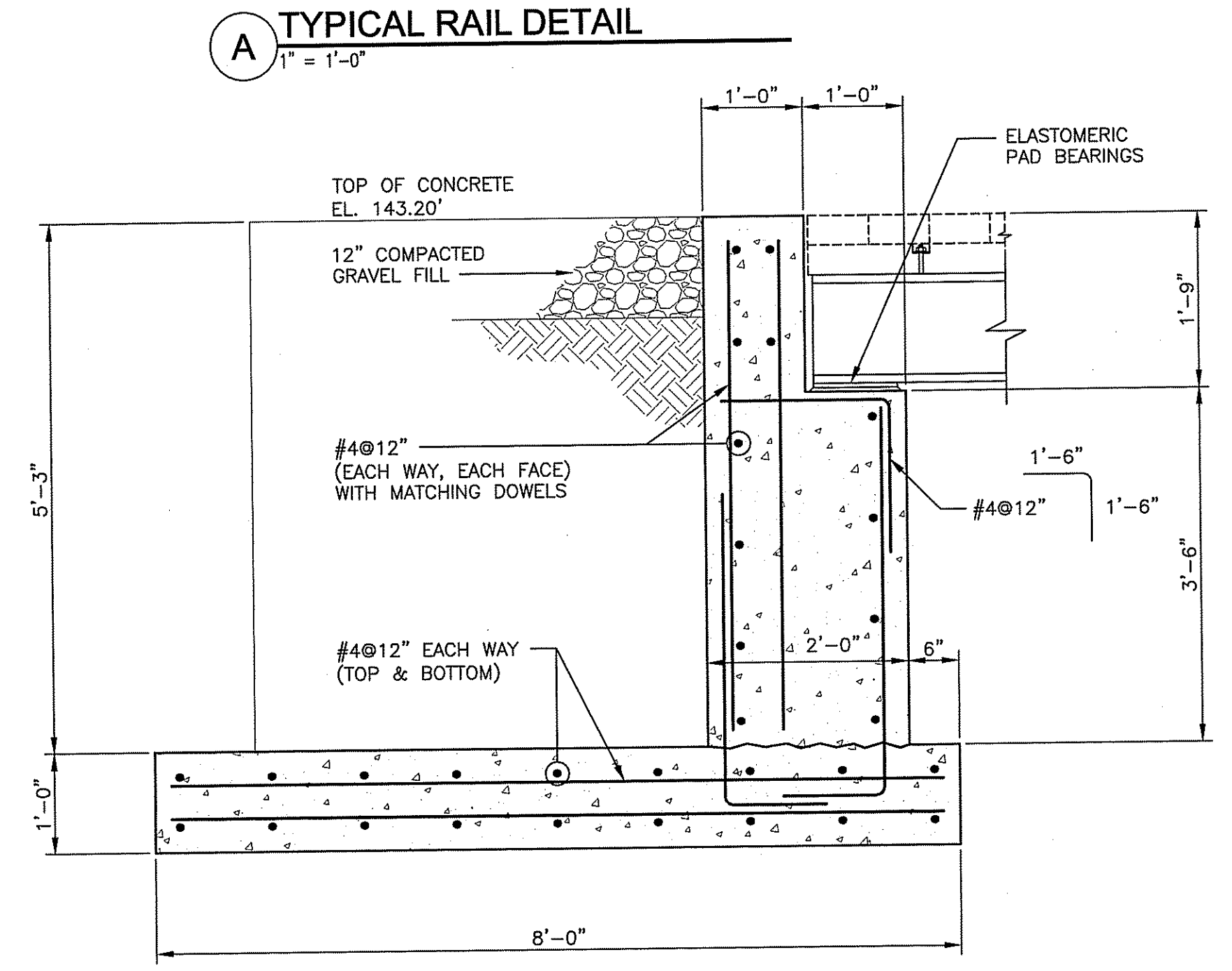
**BRIDGE
FRAMING PLAN,
SECTIONS & DETAILS**

PROJECT NO.: 18744
DESIGNED BY: JAJ
DRAWN BY: KC
CHK'D BY: JMM
DATE: SEPTEMBER 30, 2009
SCALE: AS NOTED
SHEET NO.:

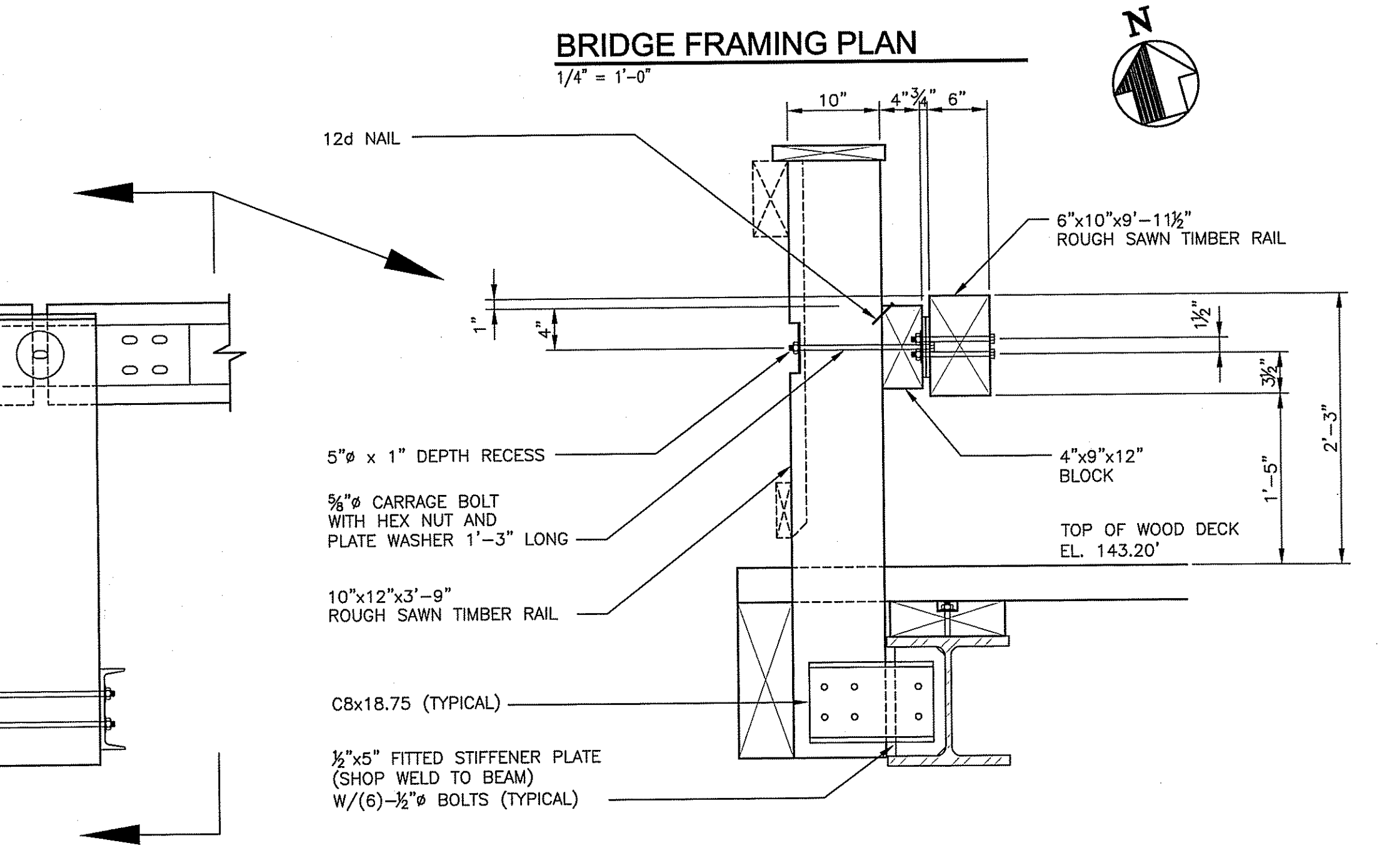
S101



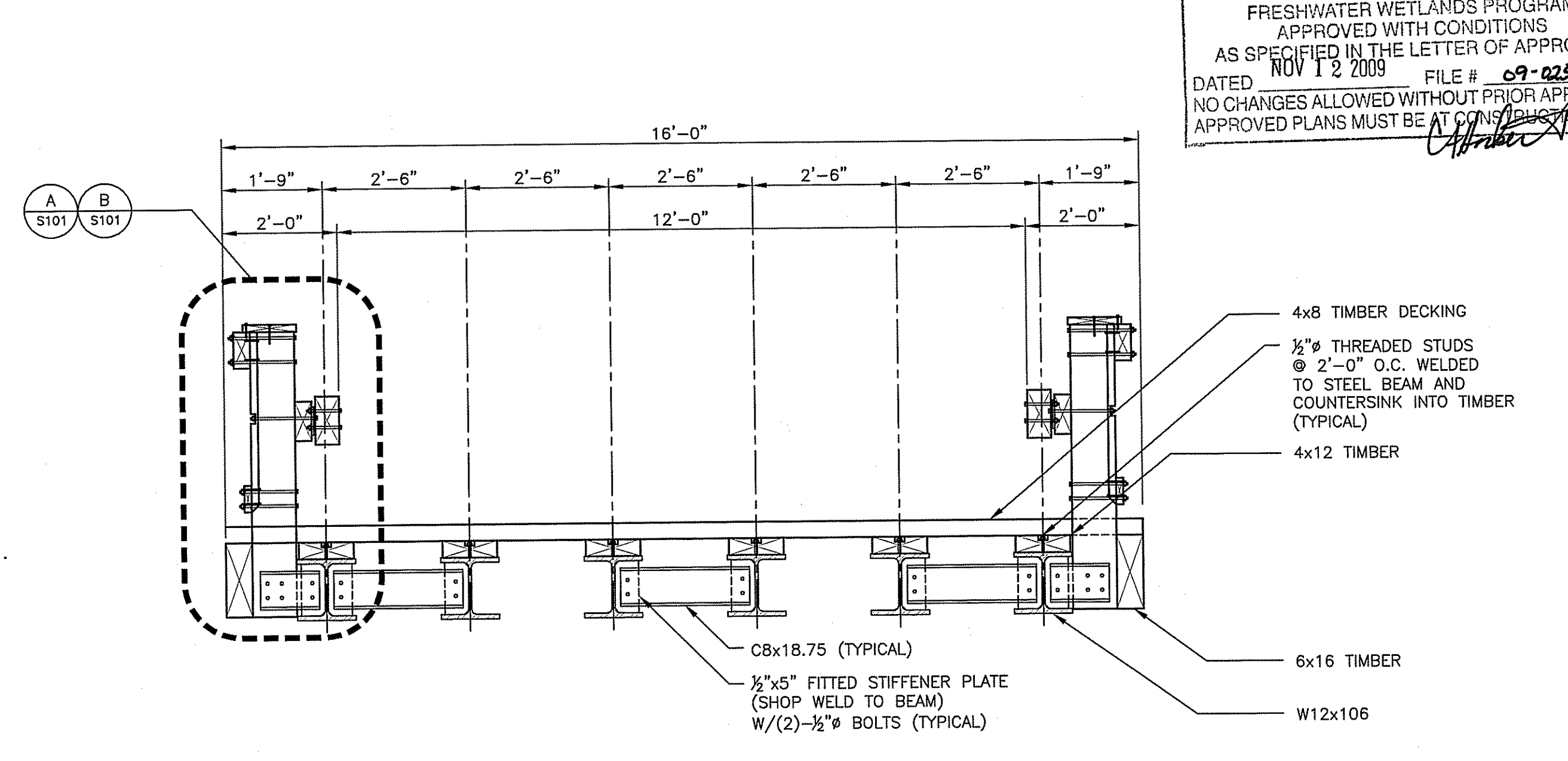
3 SECTION
3/4" = 1'-0"



2 SECTION
3/4" = 1'-0"



B TYPICAL GUARD RAIL DETAIL
1" = 1'-0"



1 BRIDGE SECTION
1/2" = 1'-0"

DEPARTMENT OF ENVIRONMENTAL MANAGEMENT
OFFICE OF WATER RESOURCES
FRESHWATER WETLANDS PROGRAM
APPROVED WITH CONDITIONS
AS SPECIFIED IN THE LETTER OF APPROVAL
DATED NOV 12 2009 FILE # 09-0256
NO CHANGES ALLOWED WITHOUT PRIOR APPROVAL
APPROVED PLANS MUST BE AT CONSULTATION SITE

DRAWING FILE: N:\Projects\18744-00-Lewis_City_Bridge\ACAD\DWG\18744-FS101.dwg PLOTTED: Sep 29 2009 - 2:10pm By: Jajack