

DEPARTMENT OF ENVIRONMENTAL MANAGEMENT
 OFFICE OF WATER RESOURCES
 FRESHWATER WETLANDS PROGRAM
 APPROVED WITH CONDITIONS
 AS SPECIFIED IN THE LETTER OF APPROVAL
 DATED **DEC 11 2009** FILE # *09-0272*
 NO CHANGES ALLOWED WITHOUT PRIOR APPROVAL.
 APPROVED PLANS MUST BE AT CONSTRUCTION SITE.

W. Joseph Carney

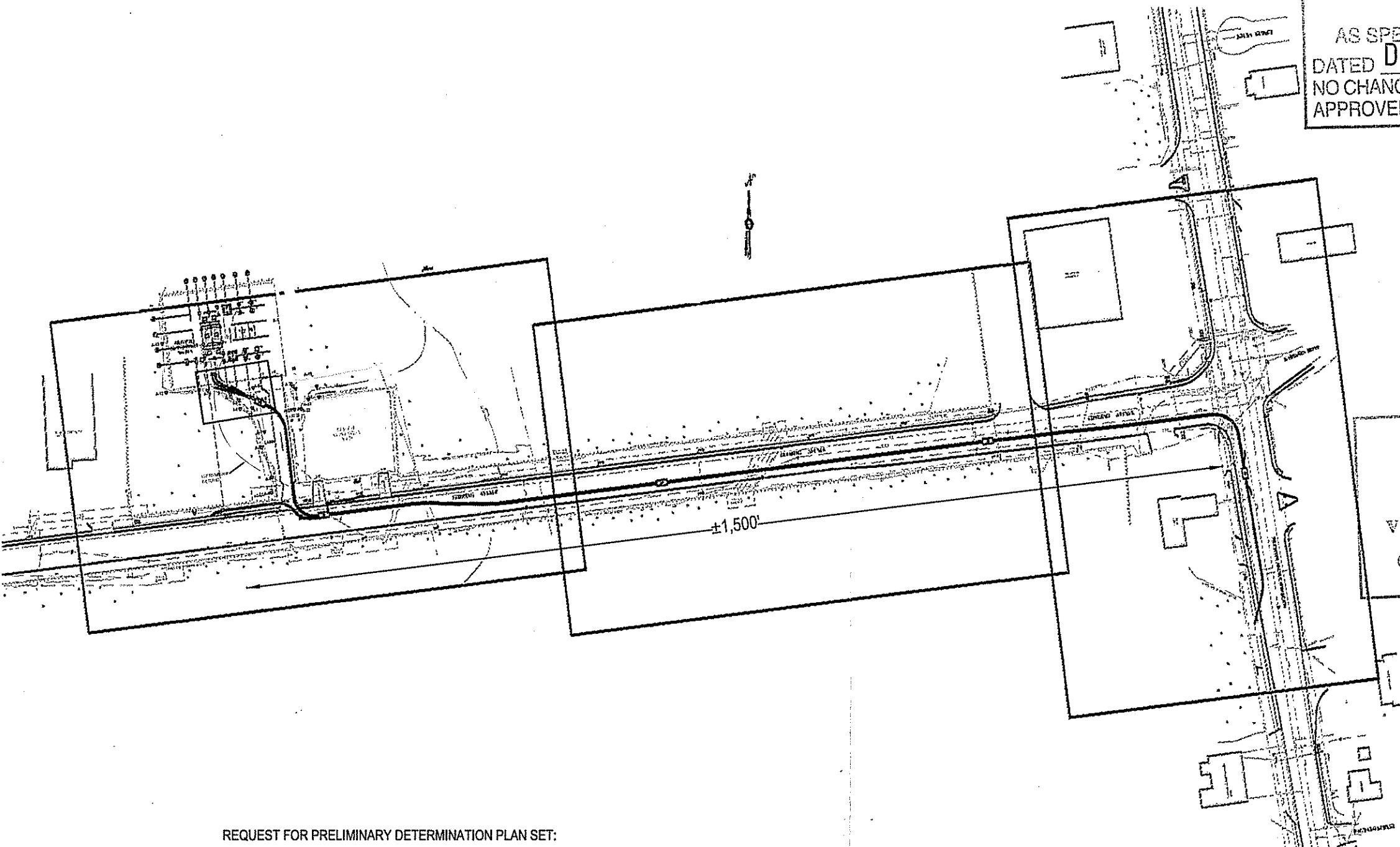
RECEIVED
 NOV 6 2009
 ENVIRONMENTAL MANAGEMENT
 OFFICE OF WATER RESOURCES

Kindly be advised that this
 Permit is not equivalent to a
 verification of the type or extent
 of freshwater wetlands on site.

- NOTES**
- DO NOT SCALE DIMENSIONS, USE DIMENSIONS WHERE NOTED. DIMENSIONS OF DIMENSIONS MAY HAVE BEEN CHANGED PER DESIGN.
 - SHOULD REFER TO PLAN NUMBER AND CONSTRUCTION.
 - NO FIELD SHALL BE PERFORMED BY THE PUBLIC UNTIL THE NECESSARY PERMITS HAVE BEEN OBTAINED.
 - LOCATION OF PILES AND STRUCTURES HAVE BEEN TAKEN FROM RECORDS AND ARE APPROXIMATE. EXACT LOCATION TO BE VERIFIED BY CONTRACTOR UNDER ASSISTANCE.
 - SMALLER CONSTRUCTION TO BE ACQUIRED BY THE FIELD AS REQUIRED TO MEET MINIMUM DESIGN AND CLEARANCES.
 - ALL WORK TO BE DONE IN ACCORDANCE WITH THE DRAWINGS LISTED BELOW. IN CASE OF CONFLICT, THIS DRAWING WILL TAKE PRECEDENCE.

APPROVED DIMENSIONS: 1000 STD. 1/4" & 3/8" THRU 1/4" 14. 1/2" 1/4" 1/2" 3/4" 1" 1 1/4" 1 1/2" 1 3/4" 2" 2 1/4" 2 1/2" 2 3/4" 3" 3 1/4" 3 1/2" 3 3/4" 4" 4 1/4" 4 1/2" 4 3/4" 5" 5 1/4" 5 1/2" 5 3/4" 6" 6 1/4" 6 1/2" 6 3/4" 7" 7 1/4" 7 1/2" 7 3/4" 8" 8 1/4" 8 1/2" 8 3/4" 9" 9 1/4" 9 1/2" 9 3/4" 10" 10 1/4" 10 1/2" 10 3/4" 11" 11 1/4" 11 1/2" 11 3/4" 12" 12 1/4" 12 1/2" 12 3/4" 13" 13 1/4" 13 1/2" 13 3/4" 14" 14 1/4" 14 1/2" 14 3/4" 15" 15 1/4" 15 1/2" 15 3/4" 16" 16 1/4" 16 1/2" 16 3/4" 17" 17 1/4" 17 1/2" 17 3/4" 18" 18 1/4" 18 1/2" 18 3/4" 19" 19 1/4" 19 1/2" 19 3/4" 20"

APPROVED DIMENSIONS: 1/8" 1/4" 3/8" 1/2" 5/8" 3/4" 7/8" 1" 1 1/8" 1 1/4" 1 1/2" 1 3/4" 1 7/8" 2" 2 1/8" 2 1/4" 2 1/2" 2 3/4" 2 7/8" 3" 3 1/8" 3 1/4" 3 1/2" 3 3/4" 3 7/8" 4" 4 1/8" 4 1/4" 4 1/2" 4 3/4" 4 7/8" 5" 5 1/8" 5 1/4" 5 1/2" 5 3/4" 5 7/8" 6" 6 1/8" 6 1/4" 6 1/2" 6 3/4" 6 7/8" 7" 7 1/8" 7 1/4" 7 1/2" 7 3/4" 7 7/8" 8" 8 1/8" 8 1/4" 8 1/2" 8 3/4" 8 7/8" 9" 9 1/8" 9 1/4" 9 1/2" 9 3/4" 9 7/8" 10" 10 1/8" 10 1/4" 10 1/2" 10 3/4" 10 7/8" 11" 11 1/8" 11 1/4" 11 1/2" 11 3/4" 11 7/8" 12" 12 1/8" 12 1/4" 12 1/2" 12 3/4" 12 7/8" 13" 13 1/8" 13 1/4" 13 1/2" 13 3/4" 13 7/8" 14" 14 1/8" 14 1/4" 14 1/2" 14 3/4" 14 7/8" 15" 15 1/8" 15 1/4" 15 1/2" 15 3/4" 15 7/8" 16" 16 1/8" 16 1/4" 16 1/2" 16 3/4" 16 7/8" 17" 17 1/8" 17 1/4" 17 1/2" 17 3/4" 17 7/8" 18" 18 1/8" 18 1/4" 18 1/2" 18 3/4" 18 7/8" 19" 19 1/8" 19 1/4" 19 1/2" 19 3/4" 19 7/8" 20"



REQUEST FOR PRELIMINARY DETERMINATION PLAN SET:
 SHEET 1 OF 4 - KEY PLAN
 SHEET 2 OF 4 - SITE PLAN
 SHEET 3 OF 4 - PARTIAL SITE PLAN, DETAIL A5
 SHEET 4 OF 4 - PROFILES B2, C2, AND D2

KEY PLAN

REVISIONS					
NO.	DATE	DESCRIPTION	BY	CHKD	APP'D
1	07/15/09	PRELIMINARY APPLICATION	SAC	PL	TS

WORK #	STATUS
1001	OPEN
1002	CLOSED
1003	RESERVED

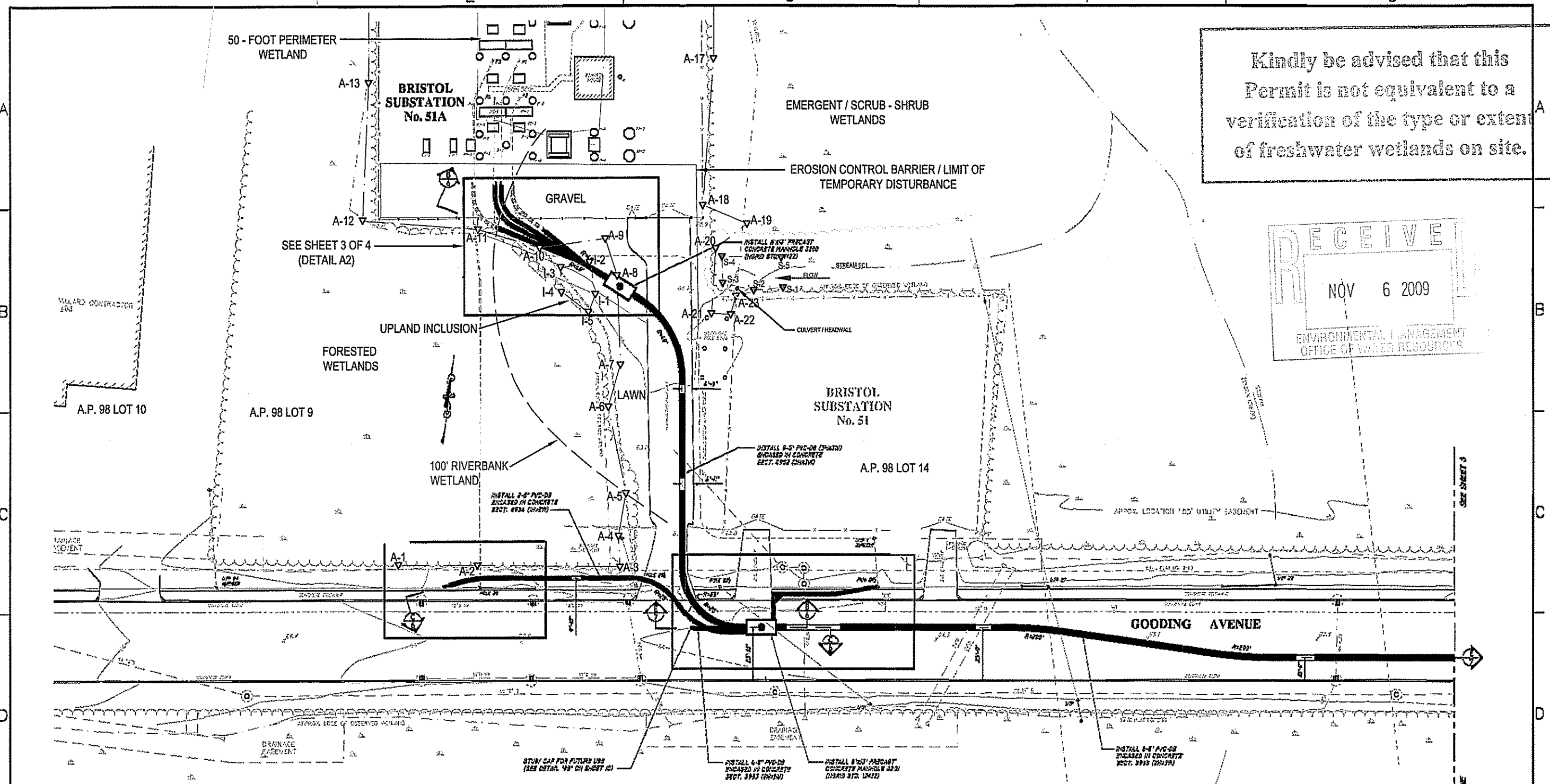
nationalgrid

BRISTOL LOAD RELIEF
 GOODING AVENUE
 BRISTOL, RI
 MANHOLE & DUCTLINE INSTALLATION
 ASSESSOR PLAT 98 LOT 9

SCALE NOT TO SCALE DATE 07.15.09 BY JWB RY MPA JLF

Kindly be advised that this Permit is not equivalent to a verification of the type or extent of freshwater wetlands on site.

RECEIVED
NOV 6 2009
ENVIRONMENTAL MANAGEMENT
OFFICE OF WATER RESOURCES



DEPARTMENT OF ENVIRONMENTAL MANAGEMENT
OFFICE OF WATER RESOURCES
FRESHWATER WETLANDS PROGRAM
APPROVED WITH CONDITIONS
AS SPECIFIED IN THE LETTER OF APPROVAL
DATED **DEC 11 2009** FILE # *D9-0272*
NO CHANGES ALLOWED WITHOUT PRIOR APPROVAL.
APPROVED PLANS MUST BE AT CONSTRUCTION SITE.

W. Joseph Carey

Legend
A-23▽ Wetland Boundary Flag
I-1▽ Upland Inclusion Boundary Flag
S-3▽ Stream Bank Flag

Notes:
1. Wetland flags A-14 through A-16 are north of subject work location and are not depicted on this site plan.
2. Erosion control measures shown in this plan are for Request for Preliminary Determination project area only.

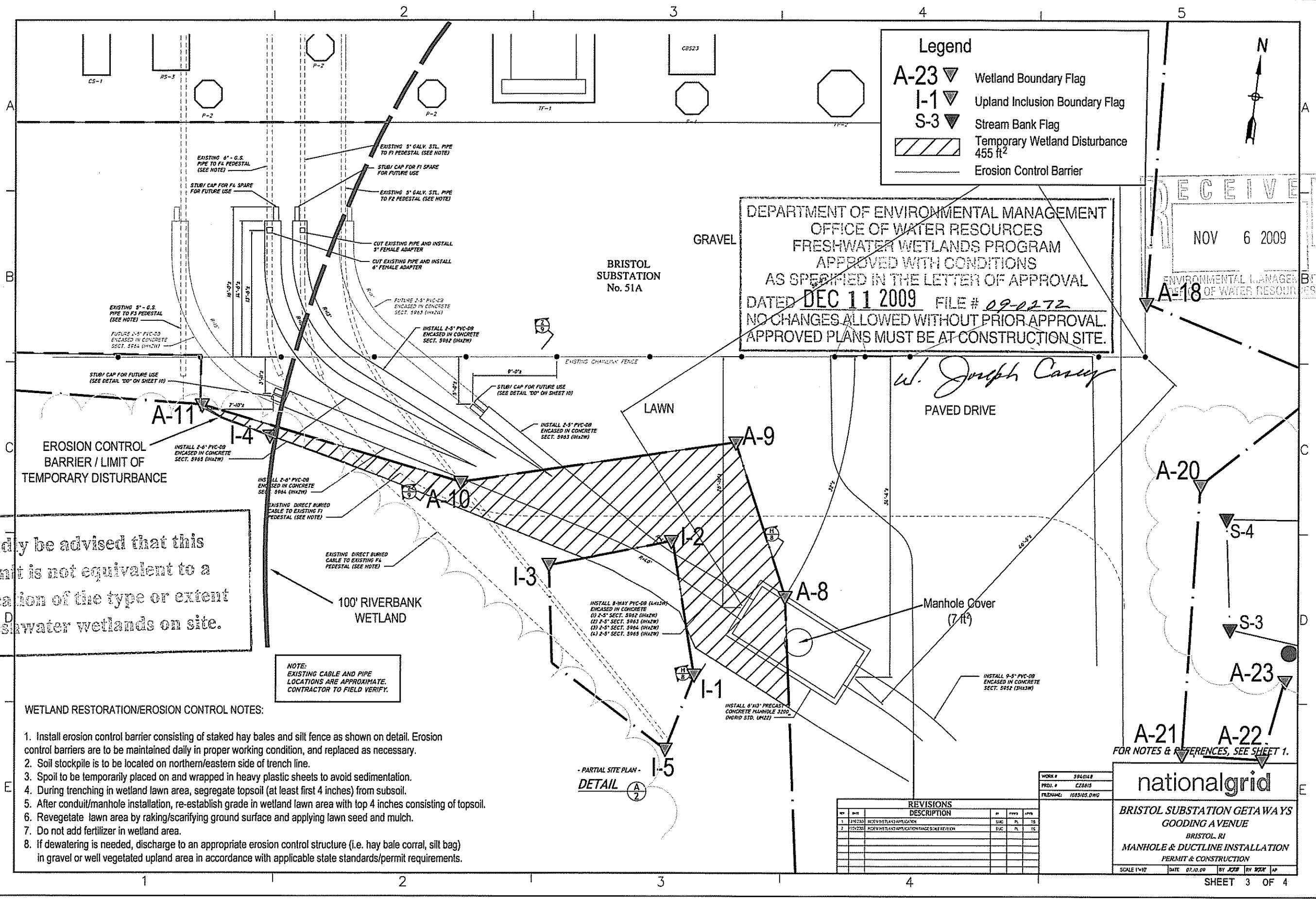
REVISIONS				
NO.	DATE	DESCRIPTION	BY	CHKD
1	10/20/09	REVISED APPROVAL	WJC	PL

WORK # 286242
PROJ # 07567
FILENAME 040802.DWG

nationalgrid

BRISTOL LOAD RELIEF
GOODING AVENUE
BRISTOL, RI
MANHOLE & DUCTLINE INSTALLATION
ASSESSOR PLAT 98 LOT 9

SCALE 1"=40' DATE 07.15.09 BY WJC/PL/TS/PL/TS



Legend

- A-23 ▽ Wetland Boundary Flag
- I-1 ▽ Upland Inclusion Boundary Flag
- S-3 ▽ Stream Bank Flag
- Temporary Wetland Disturbance 455 ft²
- Erosion Control Barrier

DEPARTMENT OF ENVIRONMENTAL MANAGEMENT
 OFFICE OF WATER RESOURCES
 FRESHWATER WETLANDS PROGRAM
 APPROVED WITH CONDITIONS
 AS SPECIFIED IN THE LETTER OF APPROVAL
 DATED **DEC 11 2009** FILE # *09-0272*
 NO CHANGES ALLOWED WITHOUT PRIOR APPROVAL.
 APPROVED PLANS MUST BE AT CONSTRUCTION SITE.

W. Joseph Casey
 PAVED DRIVE

RECEIVED
 NOV 6 2009
 ENVIRONMENTAL MANAGER
 OFFICE OF WATER RESOURCES

Kindly be advised that this Permit is not equivalent to a verification of the type or extent of freshwater wetlands on site.

NOTE:
 EXISTING CABLE AND PIPE LOCATIONS ARE APPROXIMATE. CONTRACTOR TO FIELD VERIFY.

- WETLAND RESTORATION/EROSION CONTROL NOTES:**
1. Install erosion control barrier consisting of staked hay bales and silt fence as shown on detail. Erosion control barriers are to be maintained daily in proper working condition, and replaced as necessary.
 2. Soil stockpile is to be located on northern/eastern side of trench line.
 3. Spoil to be temporarily placed on and wrapped in heavy plastic sheets to avoid sedimentation.
 4. During trenching in wetland lawn area, segregate topsoil (at least first 4 inches) from subsoil.
 5. After conduit/manhole installation, re-establish grade in wetland lawn area with top 4 inches consisting of topsoil.
 6. Revegetate lawn area by raking/scarifying ground surface and applying lawn seed and mulch.
 7. Do not add fertilizer in wetland area.
 8. If dewatering is needed, discharge to an appropriate erosion control structure (i.e. hay bale corral, silt bag) in gravel or well vegetated upland area in accordance with applicable state standards/permit requirements.

REVISIONS					
NO.	DATE	DESCRIPTION	BY	CHKD	APP'D
1	07/20/09	REVIEW PERMITS APPLICATION	SJC	PL	TS
2	10/20/09	REVIEW WETLANDS APPLICATION PAGE SCALE REVISION	SJC	PL	TS

nationalgrid

BRISTOL SUBSTATION GETAWAYS
 GOODING AVENUE
 BRISTOL, RI
 MANHOLE & DUCTLINE INSTALLATION
 PERMIT & CONSTRUCTION

SCALE 1"=10' DATE 07.10.09 BY JZB RV 9224 JP

A

B

C

D

E

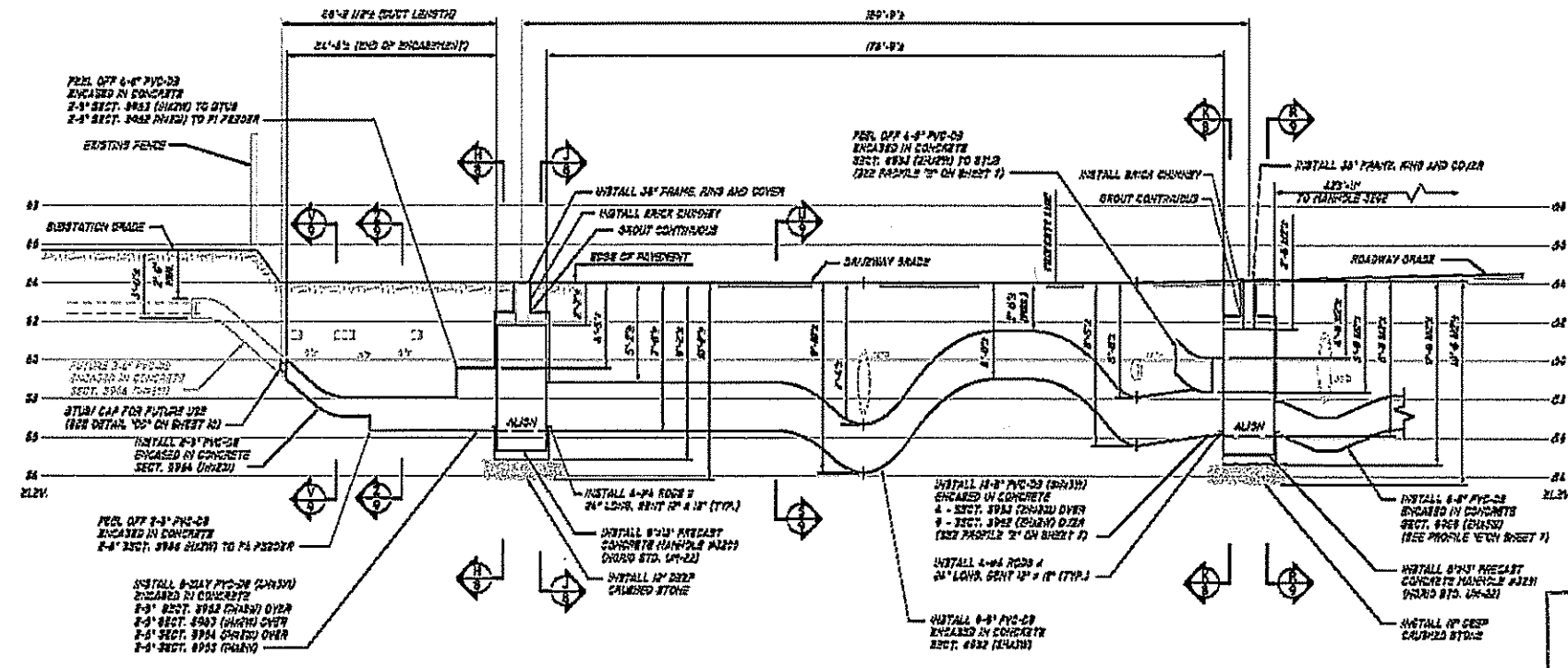
A

B

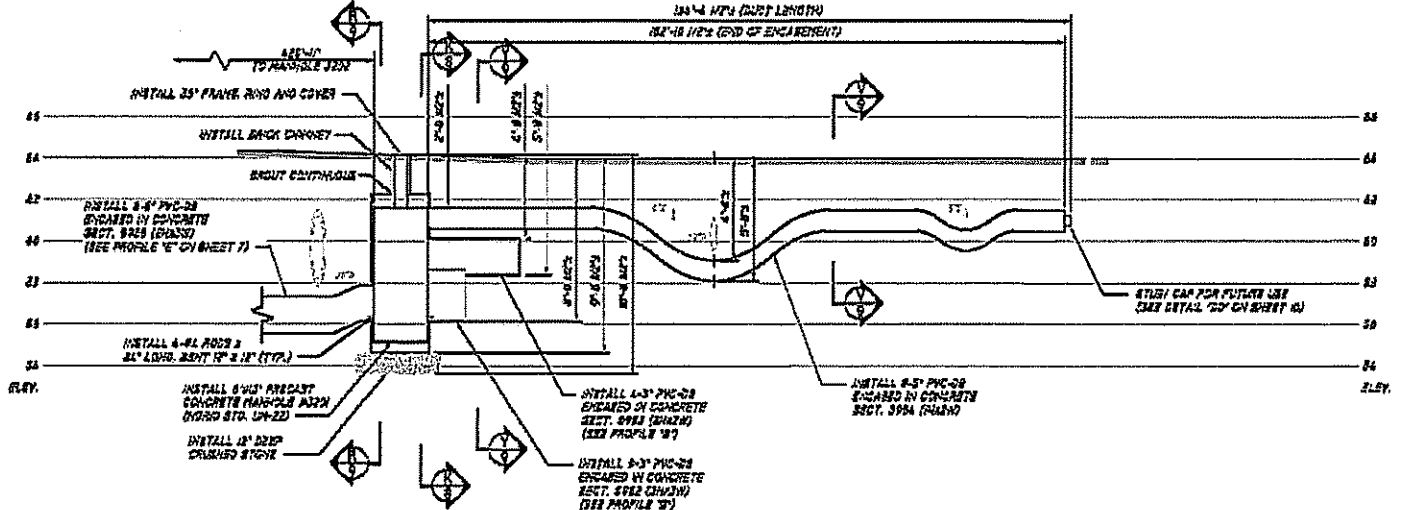
C

D

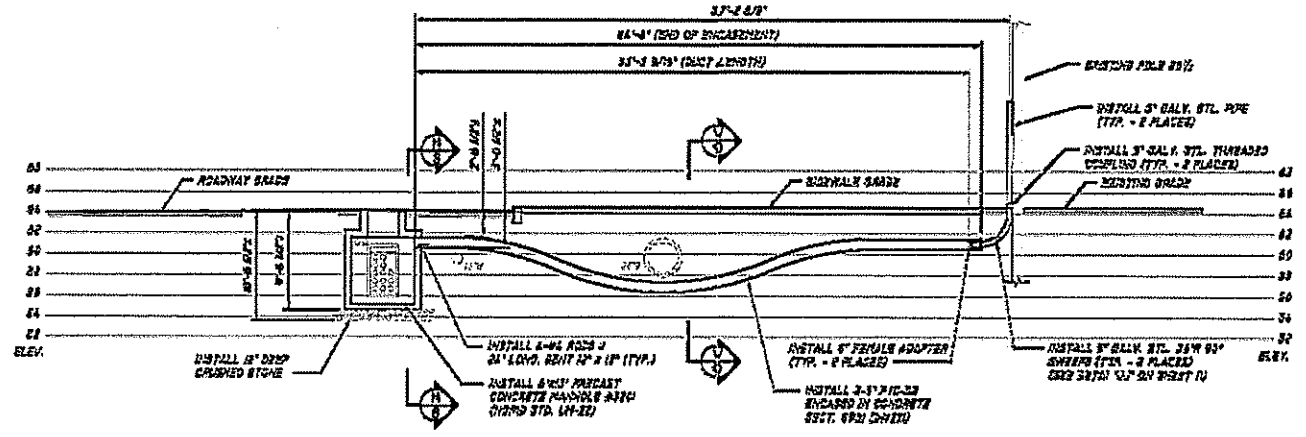
E



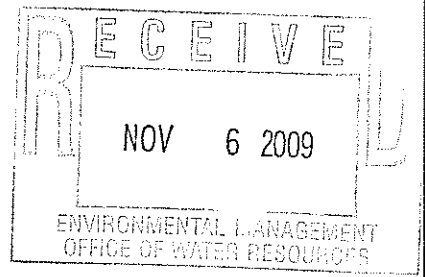
PROFILE B
1'-20'-0" HORIZ.
1/4"=1'-0" VERT.



PROFILE C
1'-20'-0" HORIZ.
1/4"=1'-0" VERT.



PROFILE D
1'-20'-0" HORIZ.
1/4"=1'-0" VERT.



Kindly be advised that this Permit is not equivalent to a verification of the type or extent of freshwater wetlands on site.

DEPARTMENT OF ENVIRONMENTAL MANAGEMENT
OFFICE OF WATER RESOURCES
FRESHWATER WETLANDS PROGRAM
APPROVED WITH CONDITIONS
AS SPECIFIED IN THE LETTER OF APPROVAL
DATED **DEC 11 2009** FILE # **09-0872**
NO CHANGES ALLOWED WITHOUT PRIOR APPROVAL.
APPROVED PLANS MUST BE AT CONSTRUCTION SITE.

W. Joseph Conroy

REVISIONS				
NO.	DATE	DESCRIPTION	BY	CHKD.
1	09/22/09	ISSUED FOR PERMIT	JAC	PL

FOR NOTES & REFERENCES, SEE SHEET 1.

nationalgrid

BRISTOL LOAD RELIEF
GOODING AVENUE
BRISTOL, RI
MANHOLE & DUCTLINE INSTALLATION
ASSESSOR PLAT 98 LOT 9

SCALE AS NOTED DATE 07.02.09 BY JAC/PL/RS