

Site Plans

Issued for: **Local Permitting**

Date Issued: November 6, 2009

Latest Issue: November 6, 2009

Index

No.	Drawing Title	Latest Issue
C-1	Legend and General Notes	11/6/09
C-2	Overall Site Plan	11/6/09
C-3	Layout and Materials Plan	11/6/09
C-4	Grading, Drainage, and Erosion Control Plan	11/6/09
C-5	Utility Plan	11/6/09
C-6	Landscape Plan	11/6/09
C-7	Site Details 1	11/6/09
C-8	Site Details 2	11/6/09
Reference Drawings		
Sv-1	Existing Conditions Plan	4/17/09

Stop & Shop Fuel Facility

1410 Atwood Avenue
Johnston, Rhode Island



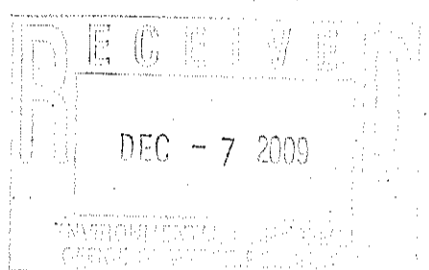
Site Location Map

Property Information

Owner:
Amalgamated Financial Equities X, LLC
1414 Atwood Avenue
Johnston, RI 02919

Applicant:
Stop & Shop Supermarket Company, LLC
1385 Hancock Street
Quincy, MA 02169

Assessor's Plat: 44-3
Lot: 431



Civil Engineer/Traffic/Survey Consultant
Vanasse Hangen Brustlin, Inc.
101 Walnut Street
Watertown, MA 02471
617-924-1770 · Fax 617 728 7782

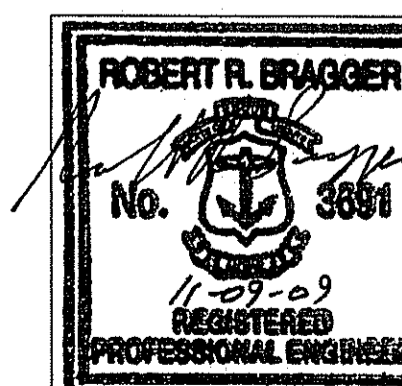
Signage Consultant
Agnoll Sign Company, Inc.
722 Worthington Street
Springfield, MA 01105
413-732-5111 · Fax 413-787-2169

Site Lighting Consultant
Engineering Advantage, Inc.
2 Park Street
Boston, MA 02122
617-288-3969 · FAX 617-825-8922

Structural Consultant
Austin Mohawk & Co., Inc.
2175 Beechgrove Place
Utica, NY 13501
315-793-3000 · Fax 315-793-9370



Vanasse Hangen Brustlin, Inc.
Transportation
Land Development
Environmental Services



Kindly be advised that this
Permit is not equivalent to a
verification of the type or extent
of freshwater wetlands on site.

DEPARTMENT OF ENVIRONMENTAL MANAGEMENT
OFFICE OF WATER RESOURCES
FRESHWATER WETLANDS PROGRAM
APPROVED WITH CONDITIONS
AS SPECIFIED IN THE LETTER OF APPROVAL
DATED **JAN 21 2010** FILE # **09-0293**
NO CHANGES ALLOWED WITHOUT PRIOR APPROVAL.
APPROVED PLANS MUST BE AT CONSTRUCTION SITE.

W. Joseph Casey

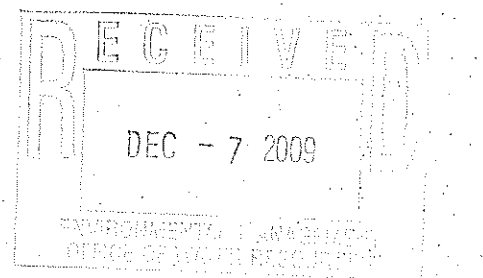
REVISED PER DEM:
SHEET 1 OF 13



Vanasse Hangen Brustlin, Inc.

Transportation
Land Development
Environmental Services

101 Walnut Street, P.O. Box 9151
Watertown, Massachusetts 02471
617.924.1770 • FAX 617.924.2286



Legend

Exist.	Prop.	Exist.	Prop.
PROPERTY LINE		CONCRETE	
PROJECT LIMIT LINE		HEAVY DUTY PAVEMENT	
RIGHT-OF-WAY/PROPERTY LINE		RIPRAP	
EASEMENT		CONSTRUCTION ENTRANCE	
BUILDING SETBACK			
PARKING SETBACK		27.25 TC x	27.35 TC x
BASELINE		36.25 BC x	26.85 BC x
CONSTRUCTION LAYOUT		132.75 x	132.75 x
ZONING LINE		45.0 TW x	45.0 TW x
TOWN LINE		38.5 BW x	38.5 BW x
		BORING LOCATION	
		TEST PIT LOCATION	
		MONITORING WELL	
		UNDERDRAIN	
WETLAND LINE WITH FLAG		12" D	12" D
FLOODPLAIN		6" D	6" D
		ROOF DRAIN	
BORDERING LAND SUBJECT TO FLOODING		12" S	12" S
WETLAND BUFFER ZONE		EM	EM
NO DISTURB ZONE		FM	FM
200' RIVERFRONT AREA		OHW	OHW
		OVERHEAD WIRE	
GRAVEL ROAD		6" W	6" W
EDGE OF PAVEMENT		4" TP	4" TP
BITUMINOUS BERM		2" DW	2" DW
BITUMINOUS CURB		G	G
CONCRETE CURB		E	E
CURB AND GUTTER		5" M	5" M
EXTRUDED CONCRETE CURB		5" M	5" M
MONOLITHIC CONCRETE CURB		5" M	5" M
PRECAST CONC. CURB		5" M	5" M
SLOPED GRAN. EDGING		5" M	5" M
VERT. GRAN. CURB		5" M	5" M
LIMIT OF CURB TYPE		5" M	5" M
SAWCUT		5" M	5" M
		CATCH BASIN	
BUILDING		DOUBLE CATCH BASIN	
BUILDING ENTRANCE		GUTTER INLET	
LOADING DOCK		DRAIN MANHOLE	
BOLLARD		TRENCH DRAIN	
DUMPSTER PAD		PLUG OR CAP	
SIGN		CLEANOUT	
DOUBLE SIGN		FLARED END SECTION	
		HEADWALL	
		SEWER MANHOLE	
		CURB STOP & BOX	
		WATER VALVE & BOX	
		TAPPING SLEEVE, VALVE & BOX	
		SIAMSESE CONNECTION	
		FIRE HYDRANT	
		WATER METER	
		POST INDICATOR VALVE	
		WATER WELL	
		GAS GATE	
		GAS METER	
		ELECTRIC MANHOLE	
		ELECTRIC METER	
		LIGHT POLE	
		TELEPHONE MANHOLE	
		TRANSFORMER PAD	
		UTILITY POLE	
		GUY POLE	
		GUY WIRE & ANCHOR	
		HAND HOLE	
		PULL BOX	
		MATCHLINE	
		MATCHLINE	
		CROSSWALK	
		ACCESSIBLE CURB RAMP	
		ACCESSIBLE PARKING	
		VAN-ACCESSIBLE PARKING	

Abbreviations

General	General
ABAN	ABANDON
ACR	ACCESSIBLE CURB RAMP
ADJ	ADJUST
APPROX	APPROXIMATE
BIT	BITUMINOUS
BS	BOTTOM OF SLOPE
BWLL	BROKEN WHITE LANE LINE
CONC	CONCRETE
DYCL	DOUBLE YELLOW CENTER LINE
EL	ELEVATION
ELEV	ELEVATION
EXIST	EXISTING
FDN	FOUNDATION
FFE	FIRST FLOOR ELEVATION
GRAN	GRANITE
GTD	GRADE TO DRAIN
LA	LANDSCAPE AREA
LOD	LIMIT OF DISTURBANCE
MAX	MAXIMUM
MIN	MINIMUM
NIC	NOT IN CONTRACT
NTS	NOT TO SCALE
PERF	PERFORATED
PROP	PROPOSED
REM	REMOVE
RET	RETAIN
R&D	REMOVE AND DISPOSE
R&R	REMOVE AND RESET
SWEL	SOLID WHITE EDGE LINE
SWLL	SOLID WHITE LANE LINE
TS	TOP OF SLOPE
TYP	TYPICAL
Utility	Utility
CB	CATCH BASIN
CMP	CORRUGATED METAL PIPE
CO	CLEANOUT
DCB	DOUBLE CATCH BASIN
DMH	DRAIN MANHOLE
CIP	CAST IRON PIPE
COND	CONDUIT
DIP	DUCTILE IRON PIPE
FES	FLARED END SECTION
FM	FORCE MAIN
F&G	FRAME AND GRATE
F&C	FRAME AND COVER
GI	GUTTER INLET
GT	GREASE TRAP
HDPE	HIGH DENSITY POLYETHYLENE PIPE
HH	HANDHOLE
HW	HEADWALL
HYD	HYDRANT
INV	INVERT ELEVATION
I-	INVERT ELEVATION
LP	LIGHT POLE
MES	METAL END SECTION
PWW	PAVED WATER WAY
PVC	POLYVINYLCHLORIDE PIPE
RCP	REINFORCED CONCRETE PIPE
R=	RIM ELEVATION
SMH	SEWER MANHOLE
TSV	TAPPING SLEEVE, VALVE AND BOX
UG	UNDERGROUND
UP	UTILITY POLE

Notes:

- General**
- CONTRACTOR SHALL NOTIFY "DIG-SAFE" (1-888-344-7233) AT LEAST 72 HOURS BEFORE EXCAVATING.
 - CONTRACTOR SHALL BE RESPONSIBLE FOR SITE SECURITY AND JOB SAFETY. CONSTRUCTION ACTIVITIES SHALL BE IN ACCORDANCE WITH OSHA STANDARDS AND LOCAL REQUIREMENTS.
 - ACCESSIBLE ROUTES, PARKING SPACES, RAMPS, SIDEWALKS AND WALKWAYS SHALL BE CONSTRUCTED IN CONFORMANCE WITH THE FEDERAL AMERICANS WITH DISABILITIES ACT AND WITH STATE AND LOCAL LAWS AND REGULATIONS (WHICHEVER ARE MORE STRINGENT).
 - AREAS DISTURBED DURING CONSTRUCTION AND NOT RESTORED WITH IMPERVIOUS SURFACES (BUILDINGS, PAVEMENTS, WALKS, ETC.) SHALL RECEIVE 6 INCHES LOAM AND SEED.
 - WITHIN THE LIMITS OF THE BUILDING FOOTPRINT, THE SITE CONTRACTOR SHALL PERFORM EARTHWORK OPERATIONS REQUIRED UP TO SUBGRADE ELEVATIONS.
 - WORK WITHIN THE LOCAL RIGHTS-OF-WAY SHALL CONFORM TO LOCAL MUNICIPAL STANDARDS. WORK WITHIN STATE RIGHTS-OF-WAY SHALL CONFORM TO THE LATEST EDITION OF THE STATE HIGHWAY DEPARTMENT'S STANDARD SPECIFICATIONS FOR HIGHWAYS AND BRIDGES.
 - UPON AWARD OF CONTRACT, CONTRACTOR SHALL MAKE NECESSARY CONSTRUCTION NOTIFICATIONS AND APPLY FOR AND OBTAIN NECESSARY PERMITS, PAY FEES, AND POST BONDS ASSOCIATED WITH THE WORK INDICATED ON THE DRAWINGS, IN THE SPECIFICATIONS, AND IN THE CONTRACT DOCUMENTS. DO NOT CLOSE OR OBSTRUCT ROADWAYS, SIDEWALKS, AND FIRE HYDRANTS, WITHOUT APPROPRIATE PERMITS.
 - TRAFFIC SIGNAGE AND PAVEMENT MARKINGS SHALL CONFORM TO THE MANUAL OF UNIFORM TRAFFIC CONTROL DEVICES.
 - AREAS OUTSIDE THE LIMITS OF PROPOSED WORK DISTURBED BY THE CONTRACTOR'S OPERATIONS SHALL BE RESTORED BY THE CONTRACTOR TO THEIR ORIGINAL CONDITION AT THE CONTRACTOR'S EXPENSE.
 - IN THE EVENT THAT SUSPECTED CONTAMINATED SOIL, GROUNDWATER, AND OTHER MEDIA ARE ENCOUNTERED DURING EXCAVATION AND CONSTRUCTION ACTIVITIES BASED ON VISUAL, OLFACTORY, OR OTHER EVIDENCE, THE CONTRACTOR SHALL STOP WORK IN THE VICINITY OF THE SUSPECT MATERIAL TO AVOID FURTHER SPREADING OF THE MATERIAL, AND SHALL NOTIFY THE OWNER IMMEDIATELY SO THAT THE APPROPRIATE TESTING AND SUBSEQUENT ACTION CAN BE TAKEN.
 - CONTRACTOR SHALL PREVENT DUST, SEDIMENT, AND DEBRIS FROM EXITING THE SITE AND SHALL BE RESPONSIBLE FOR CLEANUP, REPAIRS AND CORRECTIVE ACTION IF SUCH OCCURS.
 - DAMAGE RESULTING FROM CONSTRUCTION LOADS SHALL BE REPAIRED BY THE CONTRACTOR AT NO ADDITIONAL COST TO OWNER.
 - CONTRACTOR SHALL CONTROL STORMWATER RUNOFF DURING CONSTRUCTION TO PREVENT ADVERSE IMPACTS TO OFF SITE AREAS, AND SHALL BE RESPONSIBLE TO REPAIR RESULTING DAMAGES, IF ANY, AT NO COST TO OWNER.
- Utilities**
- THE LOCATIONS, SIZES, AND TYPES OF EXISTING UTILITIES ARE SHOWN AS AN APPROXIMATE REPRESENTATION ONLY. THE OWNER OR ITS REPRESENTATIVE(S) HAVE NOT INDEPENDENTLY VERIFIED THIS INFORMATION AS SHOWN ON THE PLANS. THE UTILITY INFORMATION SHOWN DOES NOT GUARANTEE THE ACTUAL EXISTENCE, SERVICEABILITY, OR OTHER DATA CONCERNING THE UTILITIES, NOR DOES IT GUARANTEE AGAINST THE POSSIBILITY THAT ADDITIONAL UTILITIES MAY BE PRESENT THAT ARE NOT SHOWN ON THE PLANS. PRIOR TO ORDERING MATERIALS AND BEGINNING CONSTRUCTION, THE CONTRACTOR SHALL VERIFY AND DETERMINE THE EXACT LOCATIONS, SIZES, AND ELEVATIONS OF THE POINTS OF CONNECTIONS TO EXISTING UTILITIES AND, SHALL CONFIRM THAT THERE ARE NO INTERFERENCES WITH EXISTING UTILITIES AND THE PROPOSED UTILITY ROUTES, INCLUDING ROUTES WITHIN THE PUBLIC RIGHTS OF WAY.
 - WHERE AN EXISTING UTILITY IS FOUND TO CONFLICT WITH THE PROPOSED WORK, OR EXISTING CONDITIONS DIFFER FROM THOSE SHOWN SUCH THAT THE WORK CANNOT BE COMPLETED AS INTENDED, THE LOCATION, ELEVATION, AND SIZE OF THE UTILITY SHALL BE ACCURATELY DETERMINED WITHOUT DELAY BY THE CONTRACTOR, AND THE INFORMATION FURNISHED IN WRITING TO THE OWNER'S REPRESENTATIVE FOR THE RESOLUTION OF THE CONFLICT AND CONTRACTOR'S FAILURE TO NOTIFY PRIOR TO PERFORMING ADDITIONAL WORK RELEASES OWNER FROM OBLIGATIONS FOR ADDITIONAL PAYMENTS WHICH OTHERWISE MAY BE WARRANTED TO RESOLVE THE CONFLICT.
 - SET CATCH BASIN RIMS, AND INVERTS OF SEWERS, DRAINS, AND DITCHES IN ACCORDANCE WITH ELEVATIONS ON THE GRADING AND UTILITY PLANS.
 - RIM ELEVATIONS FOR DRAIN AND SEWER MANHOLES, WATER VALVE COVERS, GAS GATES, ELECTRIC AND TELEPHONE PULL BOXES, AND MANHOLES, AND OTHER SUCH ITEMS, ARE APPROXIMATE AND SHALL BE SET/RESET AS FOLLOWS:
 - PAVEMENTS AND CONCRETE SURFACES: FLUSH
 - ALL SURFACES ALONG ACCESSIBLE ROUTES: FLUSH
 - LANDSCAPE, LOAM AND SEED, AND OTHER EARTH SURFACE AREAS: ONE INCH ABOVE SURROUNDING AREA AND TAPER EARTH TO THE RIM ELEVATION.
 - THE LOCATION, SIZE, DEPTH, AND SPECIFICATIONS FOR CONSTRUCTION OF PROPOSED PRIVATE UTILITY SERVICES SHALL BE INSTALLED ACCORDING TO THE REQUIREMENTS PROVIDED BY, AND APPROVED BY, THE RESPECTIVE UTILITY COMPANY (GAS, TELEPHONE, ELECTRIC, FIRE ALARM, ETC.). FINAL DESIGN LOADS AND LOCATIONS TO BE COORDINATED WITH OWNER AND ARCHITECT.
 - CONTRACTOR SHALL MAKE ARRANGEMENTS FOR AND SHALL BE RESPONSIBLE FOR PAYING FEES FOR POLE RELOCATION AND FOR THE ALTERATION AND ADJUSTMENT OF GAS, ELECTRIC, TELEPHONE, FIRE ALARM, AND ANY OTHER PRIVATE UTILITIES, WHETHER WORK IS PERFORMED BY CONTRACTOR OR BY THE UTILITIES COMPANY.
 - UTILITY PIPE MATERIALS SHALL BE AS FOLLOWS, UNLESS OTHERWISE NOTED ON THE PLAN:
 - WATER PIPES SHALL BE TYPE K COPPER FOR WATER SERVICE.
 - SANITARY SEWER PIPES SHALL BE POLYVINYL CHLORIDE (PVC) SEWER PIPE
 - STORM DRAINAGE PIPES SHALL BE CLASS V REINFORCED CONCRETE PIPE(RCP), UNLESS OTHERWISE NOTED ON THE PLAN.
 - CONTRACTOR SHALL COORDINATE WITH ELECTRICAL CONTRACTOR AND SHALL FURNISH EXCAVATION, INSTALLATION, AND BACKFILL OF ELECTRICAL FURNISHED SITEWORK RELATED ITEMS SUCH AS PULL BOXES, CONDUITS, DUCT BANKS, LIGHT POLE BASES, AND CONCRETE PADS. SITE CONTRACTOR SHALL FURNISH CONCRETE ENCASUREMENT OF DUCT BANKS IF REQUIRED BY THE UTILITY COMPANY AND AS INDICATED ON THE DRAWINGS.
 - CONTRACTOR SHALL EXCAVATE AND BACKFILL TRENCHES FOR GAS IN ACCORDANCE WITH GAS COMPANY'S REQUIREMENTS.
 - ALL DRAINAGE AND SANITARY STRUCTURE INTERIOR DIAMETERS (4" MIN.) SHALL BE DETERMINED BY THE MANUFACTURER BASED ON THE PIPE CONFIGURATIONS SHOWN ON THESE PLANS AND LOCAL MUNICIPAL STANDARDS. FOR MANHOLES THAT ARE 20 FEET IN DEPTH AND GREATER, THE MINIMUM DIAMETER SHALL BE 5 FEET.
- Layout and Materials**
- DIMENSIONS ARE FROM THE FACE OF CURB, FACE OF BUILDING, FACE OF WALL, AND CENTER LINE

- Demolition**
- CONTRACTOR SHALL REMOVE AND DISPOSE OF EXISTING MANMADE SURFACE FEATURES WITHIN THE LIMIT OF WORK INCLUDING BUILDINGS, STRUCTURES, PAVEMENTS, SLABS, CURBING, FENCES, UTILITY POLES, SIGNS, ETC. UNLESS INDICATED OTHERWISE ON THE DRAWINGS. REMOVE AND DISPOSE OF EXISTING UTILITIES, FOUNDATIONS AND UNSUITABLE MATERIAL BENEATH AND FOR A DISTANCE OF 10 FEET BEYOND THE PROPOSED BUILDING FOOTPRINT INCLUDING EXTERIOR COLUMNS.
 - EXISTING UTILITIES SHALL BE TERMINATED, UNLESS OTHERWISE NOTED, IN CONFORMANCE WITH LOCAL, STATE AND INDIVIDUAL UTILITY COMPANY STANDARD SPECIFICATIONS AND DETAILS. THE CONTRACTOR SHALL COORDINATE UTILITY SERVICE DISCONNECTS WITH THE UTILITY REPRESENTATIVES.
 - CONTRACTOR SHALL DISPOSE OF DEMOLITION DEBRIS IN ACCORDANCE WITH APPLICABLE FEDERAL, STATE AND LOCAL REGULATIONS, ORDINANCES AND STATUTES.
- Erosion Control**
- PRIOR TO STARTING ANY OTHER WORK ON THE SITE, THE CONTRACTOR SHALL NOTIFY APPROPRIATE AGENCIES AND SHALL INSTALL EROSION CONTROL MEASURES AS SHOWN ON THE PLANS AND AS IDENTIFIED IN FEDERAL, STATE, AND LOCAL APPROVAL DOCUMENTS PERTAINING TO THIS PROJECT.
 - CONTRACTOR SHALL INSPECT AND MAINTAIN EROSION CONTROL MEASURES, AND REMOVE SEDIMENT THEREFROM ON A WEEKLY BASIS AND WITHIN TWELVE HOURS AFTER EACH STORM EVENT AND DISPOSE OF SEDIMENTS IN AN UPLAND AREA SUCH THAT THEY DO NOT ENCUMBER OTHER DRAINAGE STRUCTURES AND PROTECTED AREAS.
 - CONTRACTOR SHALL BE FULLY RESPONSIBLE TO CONTROL CONSTRUCTION SUCH THAT SEDIMENTATION SHALL NOT AFFECT REGULATORY PROTECTED AREAS, WHETHER SUCH SEDIMENTATION IS CAUSED BY WATER, WIND, OR DIRECT DEPOSIT.
 - CONTRACTOR SHALL PERFORM CONSTRUCTION SEQUENCING SUCH THAT EARTH MATERIALS ARE EXPOSED FOR A MINIMUM OF TIME BEFORE THEY ARE COVERED, SEED, OR OTHERWISE STABILIZED TO PREVENT EROSION.
 - UPON COMPLETION OF CONSTRUCTION AND ESTABLISHMENT OF PERMANENT GROUND COVER, CONTRACTOR SHALL REMOVE AND DISPOSE OF EROSION CONTROL MEASURES AND CLEAN SEDIMENT AND DEBRIS FROM ENTIRE DRAINAGE AND SEWER SYSTEMS.
- Existing Conditions Information**
- BASE PLAN: THE PROPERTY LINES SHOWN CONFORM TO TYPE IV CLASS STANDARDS ADOPTED BY THE RHODE ISLAND BOARD OF REGISTRATION FOR PROFESSIONAL LAND SURVEYORS. THE TOPOGRAPHY AND PHYSICAL FEATURES ARE BASED ON AN ACTUAL FIELD SURVEY PERFORMED ON THE GROUND BY VANASSE HANGEN BRUSTLIN, INC. BETWEEN APRIL 14, 2009 AND APRIL 22, 2009.
 - DELINEATION OF THE WETLANDS AND PLACEMENT OF THE FLAGS WAS PERFORMED BY VANASSE HANGEN BRUSTLIN, INC.
 - FLAGS MARKING THE WETLANDS WERE LOCATED BY: VANASSE HANGEN BRUSTLIN, INC.
 - TOPOGRAPHY: ELEVATIONS ARE BASED ON N.G.V.D 1929.

Kindly be advised that this Permit is not equivalent to a verification of the type or extent of freshwater wetlands on site.

No.	Revision	Date	Appr.

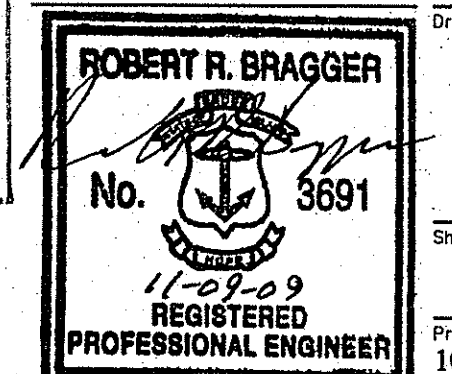
Designed by **MAC** Drawn by **MAC** Checked by **CPN**
 CAD checked by **MAC** Approved by **EHM**
 Scale **N.T.S.** Date **November 6, 2009**
 Project Title

Stop & Shop Fuel Facility
 1410 Atwood Avenue
 Johnston, RI
 Issued for
Local Permitting

Drawing Title
Legend and General Notes

DEPARTMENT OF ENVIRONMENTAL MANAGEMENT
 OFFICE OF WATER RESOURCES
 FRESHWATER WETLANDS PROGRAM
 APPROVED WITH CONDITIONS
 AS SPECIFIED IN THE LETTER OF APPROVAL
 DATED **JAN 21 2010** FILE # **02033**
 NO CHANGES ALLOWED WITHOUT PRIOR APPROVAL.
 APPROVED PLANS MUST BE AT CONSTRUCTION SITE.

W. Joseph Carey



Drawing Number
C-1
 Sheet **2** of **13**
 Project Number
10763.00



Vanasse Hangen Brustlin, Inc.

Transportation
Land Development
Environmental Services

101 Walnut Street, P.O. Box 9151
Watertown, Massachusetts 02471
617.924.1770 • FAX 617.924.2286

Sign Summary

M.U.T.C.D. Number	Specification		Desc.
	Width	Height	
R1-1	30'	30'	

Kindly be advised that this Permit is not equivalent to a verification of the type or extent of freshwater wetlands on site.

RECEIVED
DEC - 7 2009

DEPARTMENT OF ENVIRONMENTAL MANAGEMENT
OFFICE OF WATER RESOURCES
FRESHWATER WETLANDS PROGRAM
APPROVED WITH CONDITIONS
AS SPECIFIED IN THE LETTER OF APPROVAL
DATED **JAN 21 2010** FILE # **09-0293**
NO CHANGES ALLOWED WITHOUT PRIOR APPROVAL.
APPROVED PLANS MUST BE AT CONSTRUCTION SITE.

W. Joseph Conroy

No.	Revision	Date	Appr.

Designed by MAC	Drawn by MAC	Checked by CPN
CAD checked by	Approved by EHM	
Scale 1" = 100'	Date	November 6, 2009

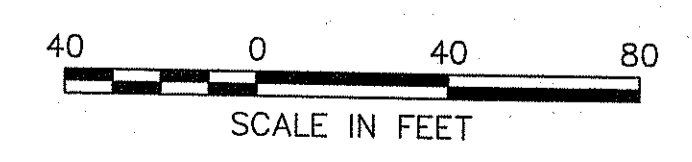
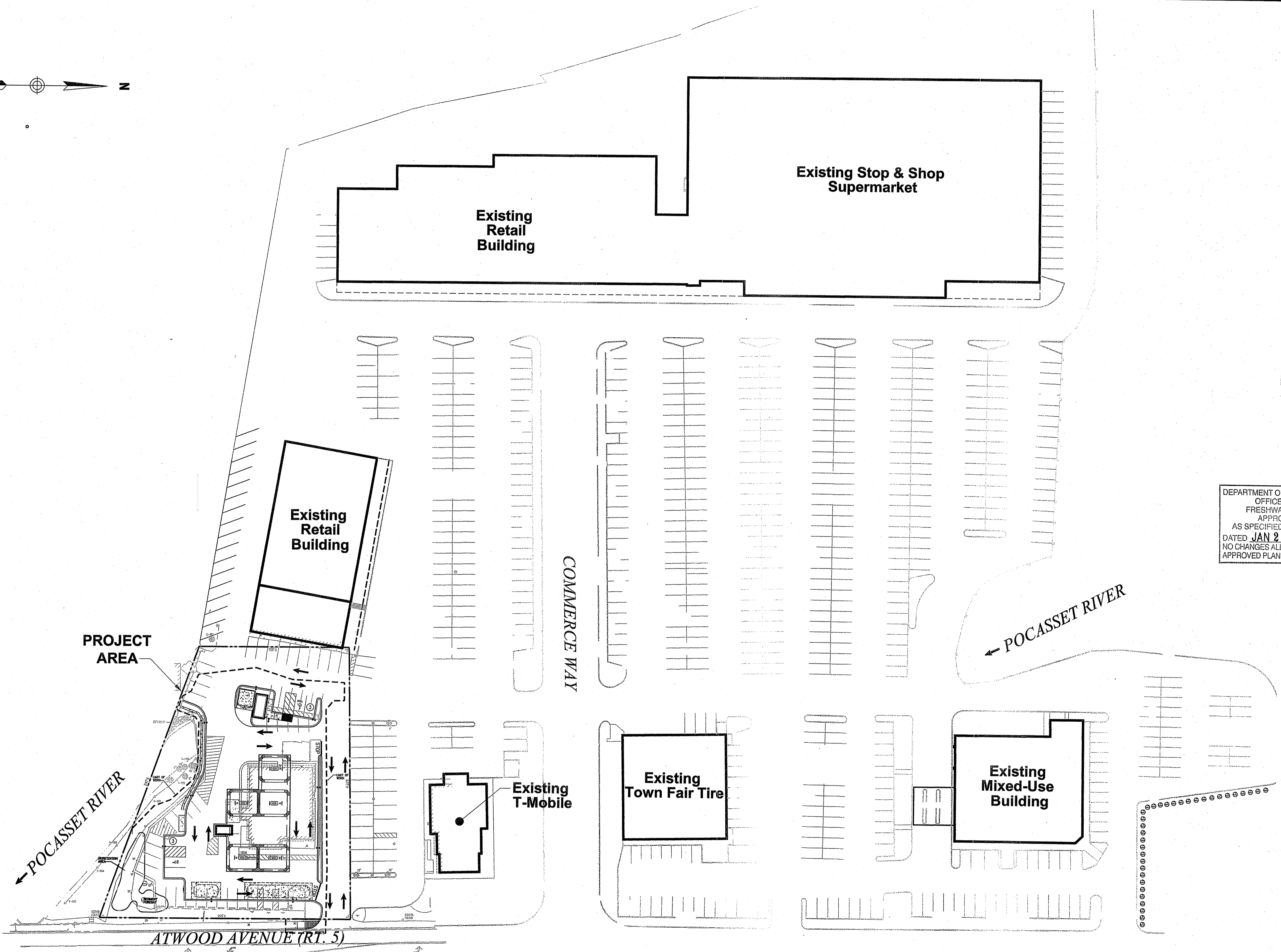
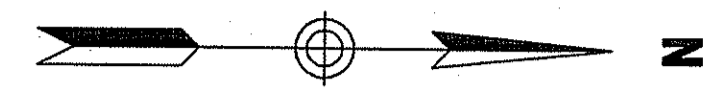
Stop & Shop Fuel Facility

1410 Atwood Avenue
Johnston, RI
Issued for
Local Permitting

Overall Site Plan

ROBERT R. BRAGGER
No. **3691**
11-09-09
REGISTERED
PROFESSIONAL ENGINEER

Drawing Number
C-2
Sheet **3** of **13**
Project Number
10763.00





Vanasse Hangen Brustlin, Inc.

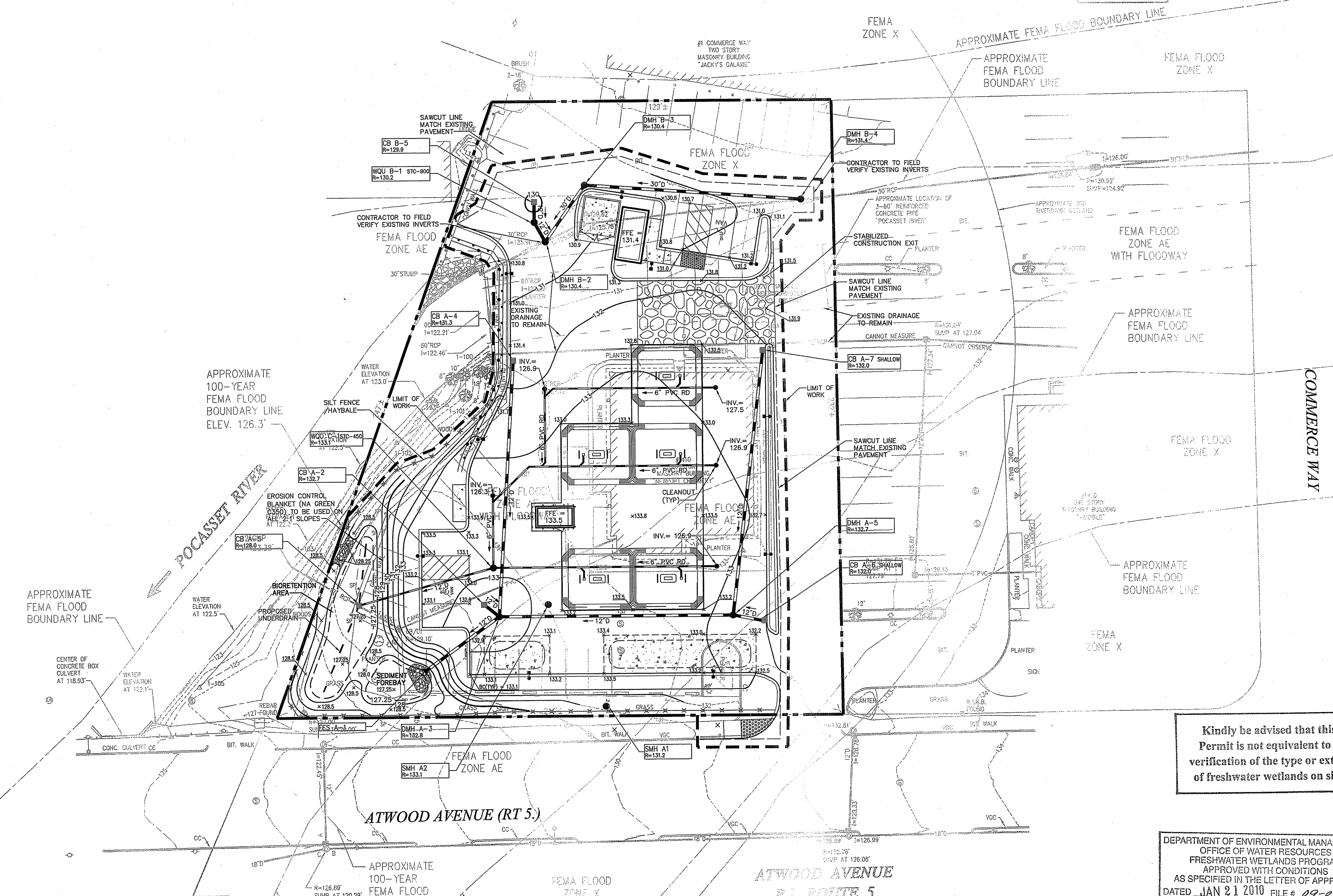
Transportation
Land Development
Environmental Services

101 Walnut Street, P.O. Box 9151
Watertown, Massachusetts 02471
617.924.1770 • FAX 617.924.2286

Saved Thursday, November 05, 2009 4:07:44 PM MARKCOSTA Plotted Friday, November 06, 2009 4:09:52 PM Costa, Mark



BENCH MARK #2
CHISELED SQUARE EAST
SIDE OF CONCRETE
LIGHT POLE BASE
ELEV. 135.26'
M.G.V.D. 1929



RECEIVED
DEC - 7 2009

No.	Revision	Date	Apprv.

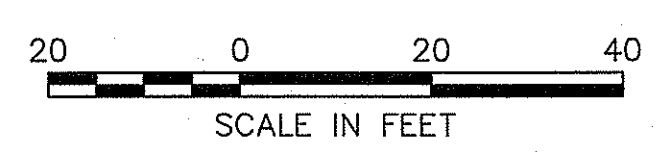
Designed by **MAC** Drawn by **MAC** Checked by **CPN**
CAD checked by Approved by **EHM**
Scale 1" = 20'
Date November 6, 2009

Stop & Shop Fuel Facility
1410 Atwood Avenue
Johnston, RI
Issued for
Local Permitting

Kindly be advised that this Permit is not equivalent to a verification of the type or extent of freshwater wetlands on site.

DEPARTMENT OF ENVIRONMENTAL MANAGEMENT
OFFICE OF WATER RESOURCES
FRESHWATER WETLANDS PROGRAM
APPROVED WITH CONDITIONS
AS SPECIFIED IN THE LETTER OF APPROVAL
DATED JAN 21 2010 FILE # 09-0993
NO CHANGES ALLOWED WITHOUT PRIOR APPROVAL.
APPROVED PLANS MUST BE AT CONSTRUCTION SITE.

W. Joseph Conroy



Grading, Drainage and Erosion Control Plan

Drawing Number
C-4
Sheet 5 of 13
Project Number
10763.00

ROBERT R. BRAGGER
No. 3691
11-09-09
REGISTERED PROFESSIONAL ENGINEER



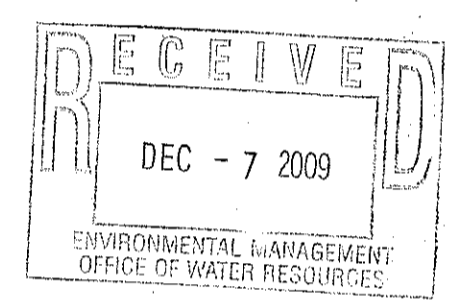
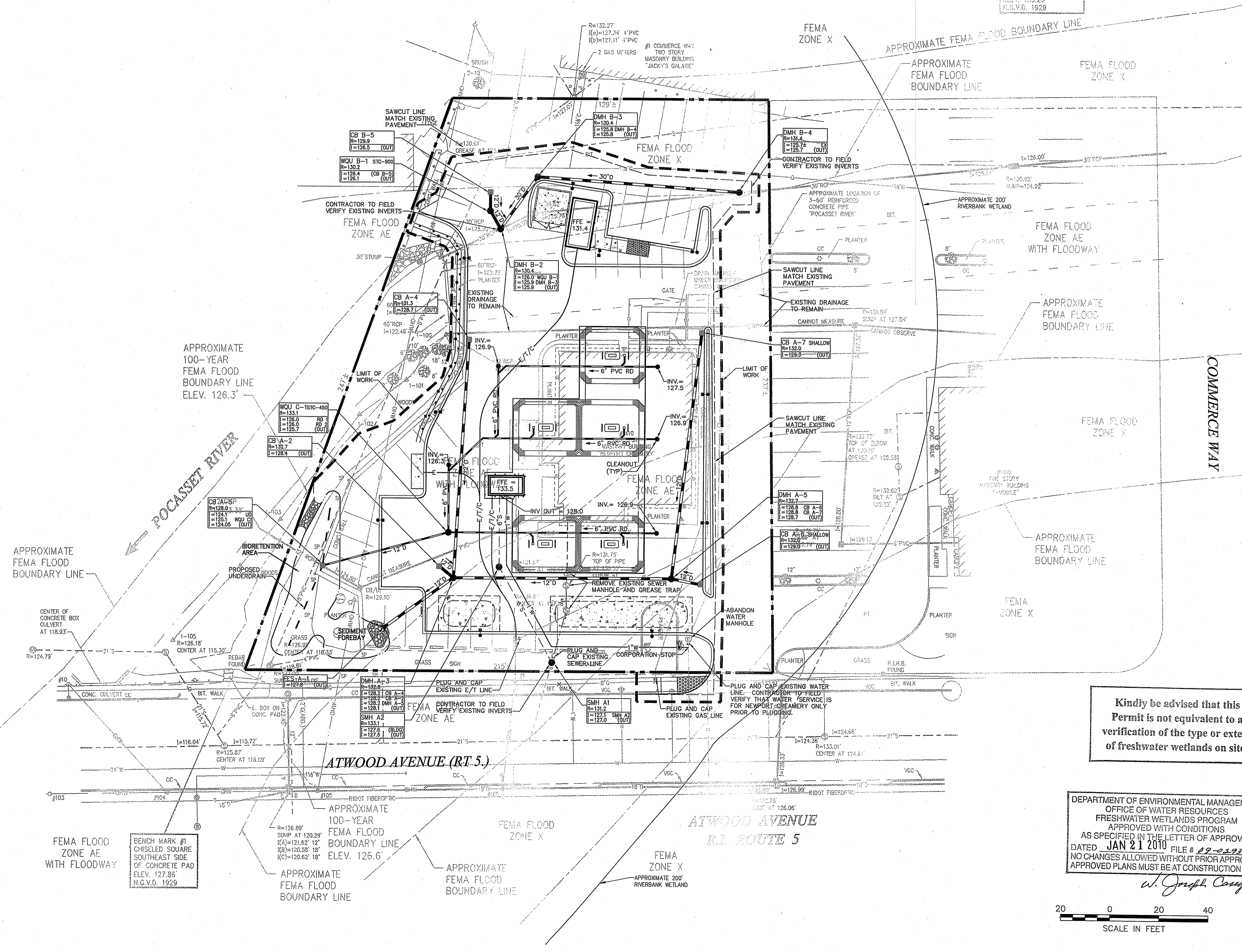
Vanasse Hangen Brustlin, Inc.

Transportation
Land Development
Environmental Services

101 Walnut Street, P.O. Box 9151
Watertown, Massachusetts 02471
617.924.1770 • FAX 617.924.2286



Saved Thursday, November 05, 2009 4:07:32 PM MARCOGOSTA Plotted Friday, November 06, 2009 4:10:02 PM Costa, Mark



No.	Revision	Date	Appr.

Designed by **MAC** Drawn by **MAC** Checked by **CPN**
 CAD checked by **---** Approved by **EHM**
 Scale 1" = 20'
 Date November 6, 2009

**Stop & Shop
Fuel Facility**

1410 Atwood Avenue
Johnston, RI
Issued for
Local Permitting

Kindly be advised that this
Permit is not equivalent to a
verification of the type or extent
of freshwater wetlands on site.

DEPARTMENT OF ENVIRONMENTAL MANAGEMENT
OFFICE OF WATER RESOURCES
FRESHWATER WETLANDS PROGRAM
APPROVED WITH CONDITIONS
AS SPECIFIED IN THE LETTER OF APPROVAL
DATED **JAN 21 2010** FILE # **10-0193**
NO CHANGES ALLOWED WITHOUT PRIOR APPROVAL
APPROVED PLANS MUST BE AT CONSTRUCTION SITE.

W. Joseph Casey
 20 0 20 40
 SCALE IN FEET

Utility Plan

ROBERT R. BRAGGER
 No. 3691
 REGISTERED
 PROFESSIONAL ENGINEER

Drawing Number
C-5
 Sheet 6 of 13
 Project Number
10763.00

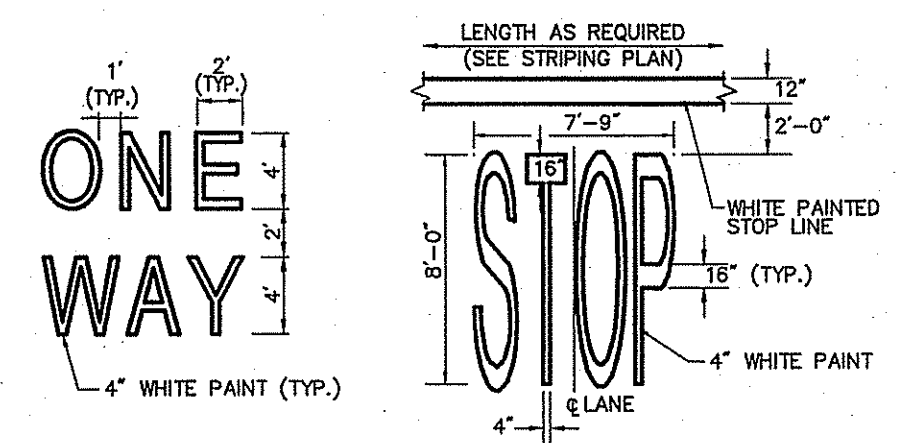
Saved Thursday, November 05, 2009 4:07:52 PM MARKCOSTA Printed Friday, November 05, 2009 4:10:29 PM Costa, Mark



Vanasse Hangen Brustlin, Inc.

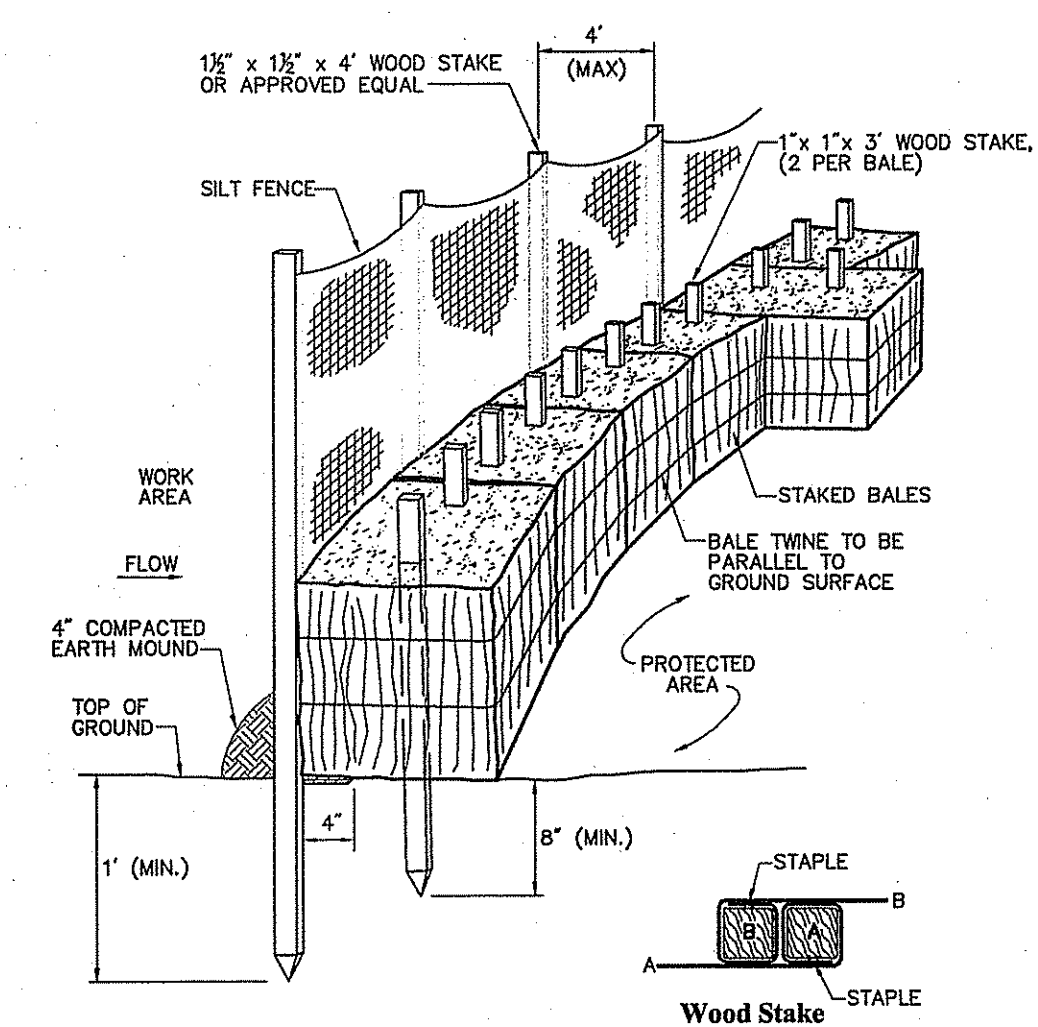
Transportation
Land Development
Environmental Services

101 Walnut Street, P.O. Box 9151
Watertown, Massachusetts 02471
617.924.1770 • FAX 617.924.2286



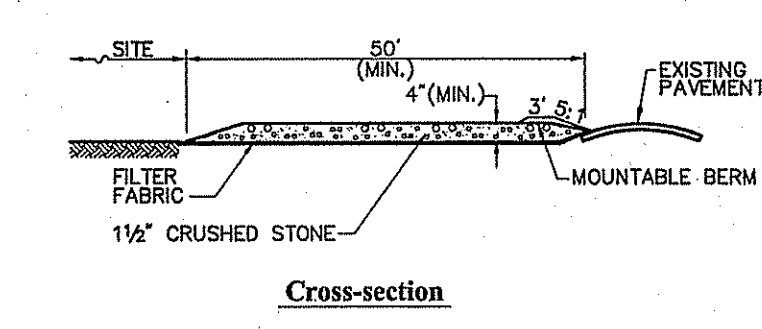
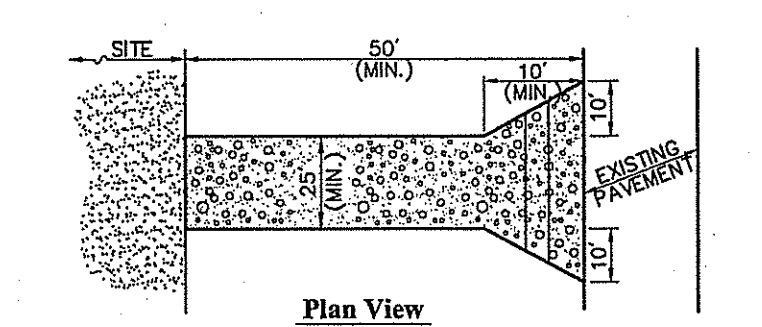
Notes:
1. PAVEMENT MARKINGS TO BE INSTALLED FOR ON SITE WORK IN LOCATIONS SHOWN.

Painted Pavement Markings - On Site 6/08
N.T.S. Source: VHB LD_554



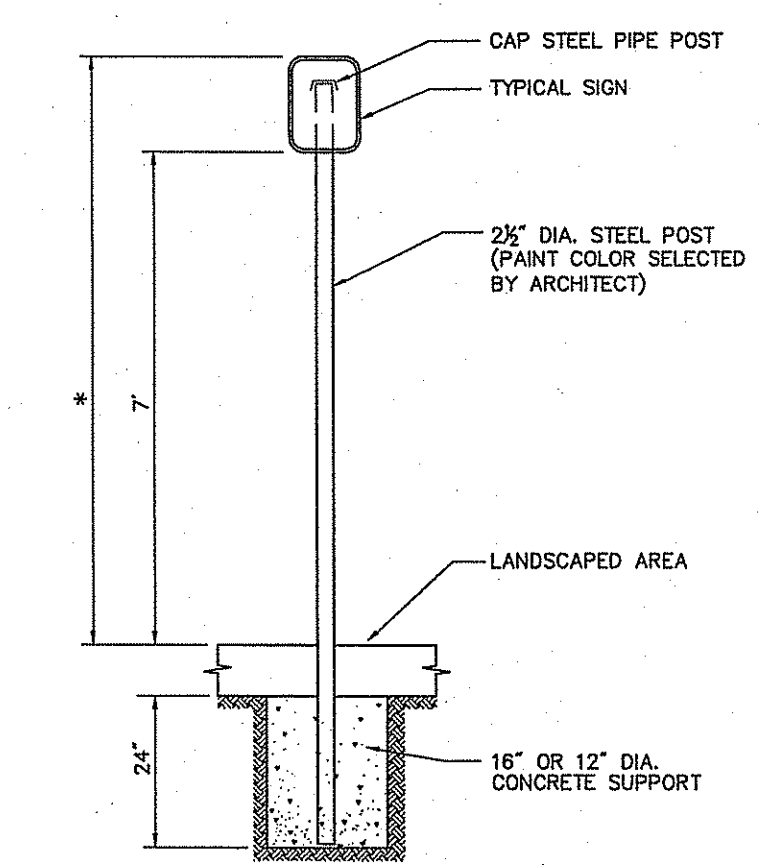
Wood Stake Joint Detail
Note:
PLACE ONE HAY BALE PERPENDICULAR ALONG HAY BALE BARRIER (100' O.C.).

Silt Fence / Hay Bale Barrier 6/08
N.T.S. Source: VHB LD_655



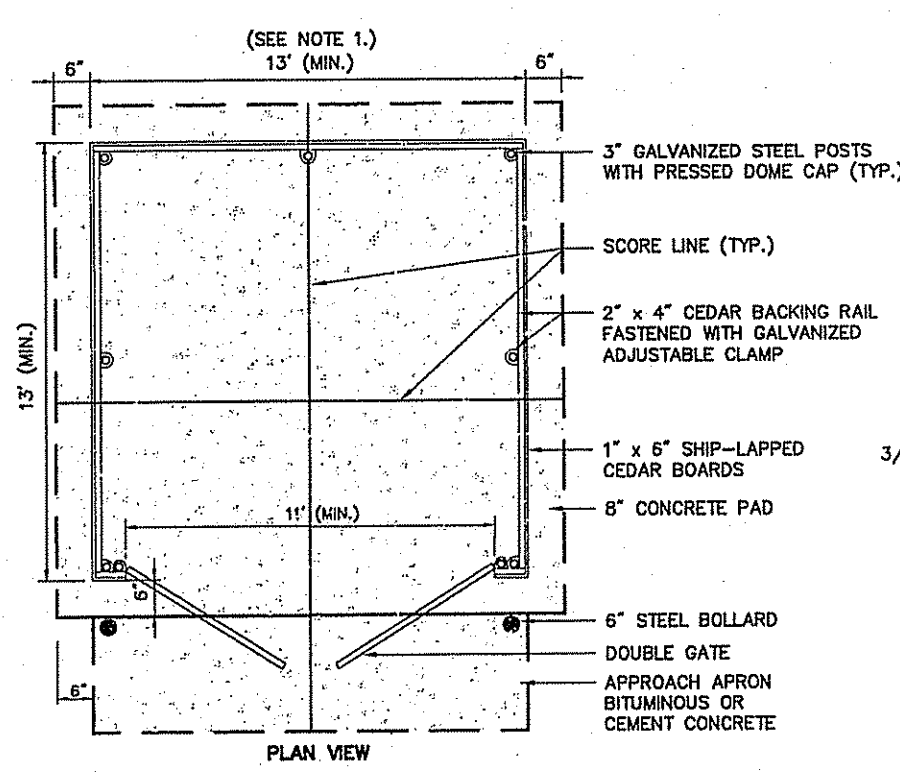
Notes:
1. ENTRANCE WIDTH SHALL BE A TWENTY-FIVE (25) FOOT MINIMUM, BUT NOT LESS THAN THE FULL WIDTH AT POINTS WHERE INGRESS OR EGRESS OCCURS.
2. THE ENTRANCE SHALL BE MAINTAINED IN A CONDITION WHICH SHALL PREVENT TRACKING OR FLOWING OF SEDIMENT ONTO PUBLIC RIGHTS-OF-WAY. THIS MAY REQUIRE PERIODIC TOP DRESSING WITH ADDITIONAL STONE AS CONDITIONS DEMAND AND REPAIR OR CLEANOUT OF ANY MEASURES USED TO TRAP SEDIMENT. ALL SEDIMENT SPILLED, DROPPED, WASHED OR TRACKED ONTO PUBLIC RIGHTS-OF-WAY MUST BE REMOVED IMMEDIATELY. BERM SHALL BE PERMITTED. PERIODIC INSPECTION AND MAINTENANCE SHALL BE PROVIDED AS NEEDED.
3. STABILIZED CONSTRUCTION EXIT SHALL BE REMOVED PRIOR TO FINAL FINISH MATERIALS BEING INSTALLED.

Stabilized Construction Exit 6/08
N.T.S. Source: VHB LD_682



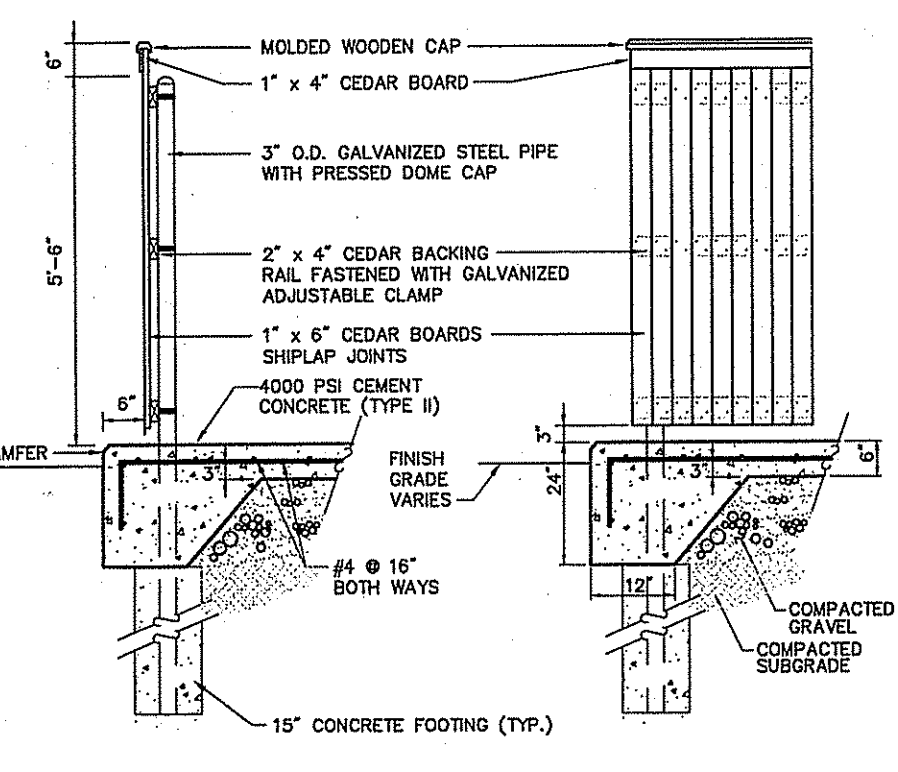
* THIS DIMENSION SHALL BE A MINIMUM OF 5' AND A MAXIMUM OF 8' FOR ACCESSIBLE SIGNAGE IN THE COMMONWEALTH OF MASSACHUSETTS.

Sign Post - Type 'A' 6/08
N.T.S. Source: VHB LD_707

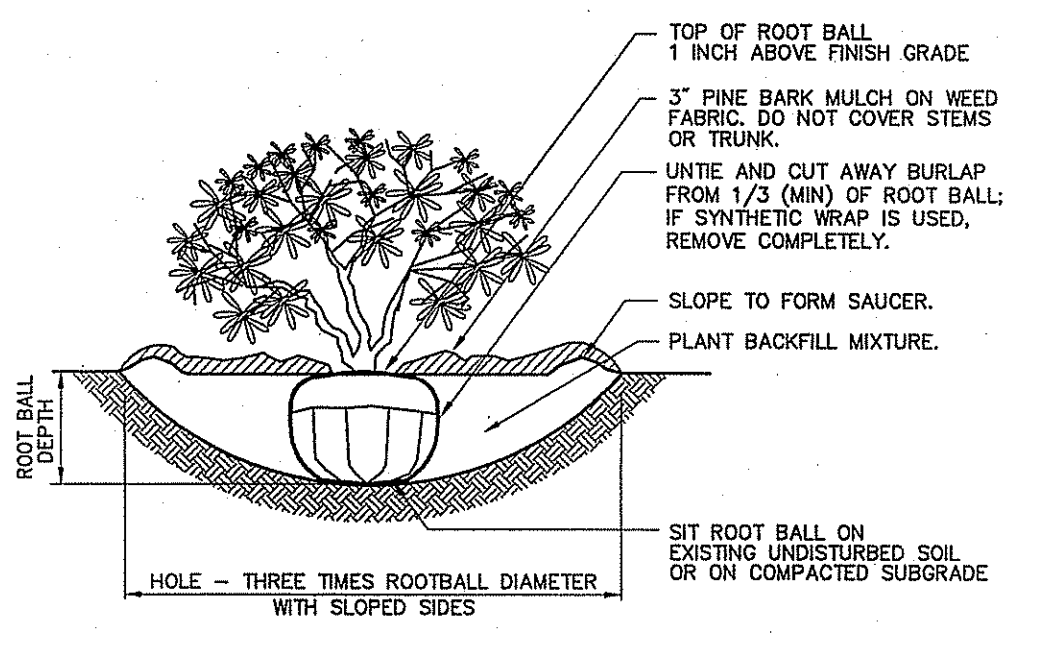


Notes:
1. DUMPSTER PAD DIMENSIONS SHOWN AS MINIMUM. REFER TO PLAN FOR ACTUAL DIMENSION.

Dumpster Pad w/ Enclosure 2/09
N.T.S. Source: VHB LD_713

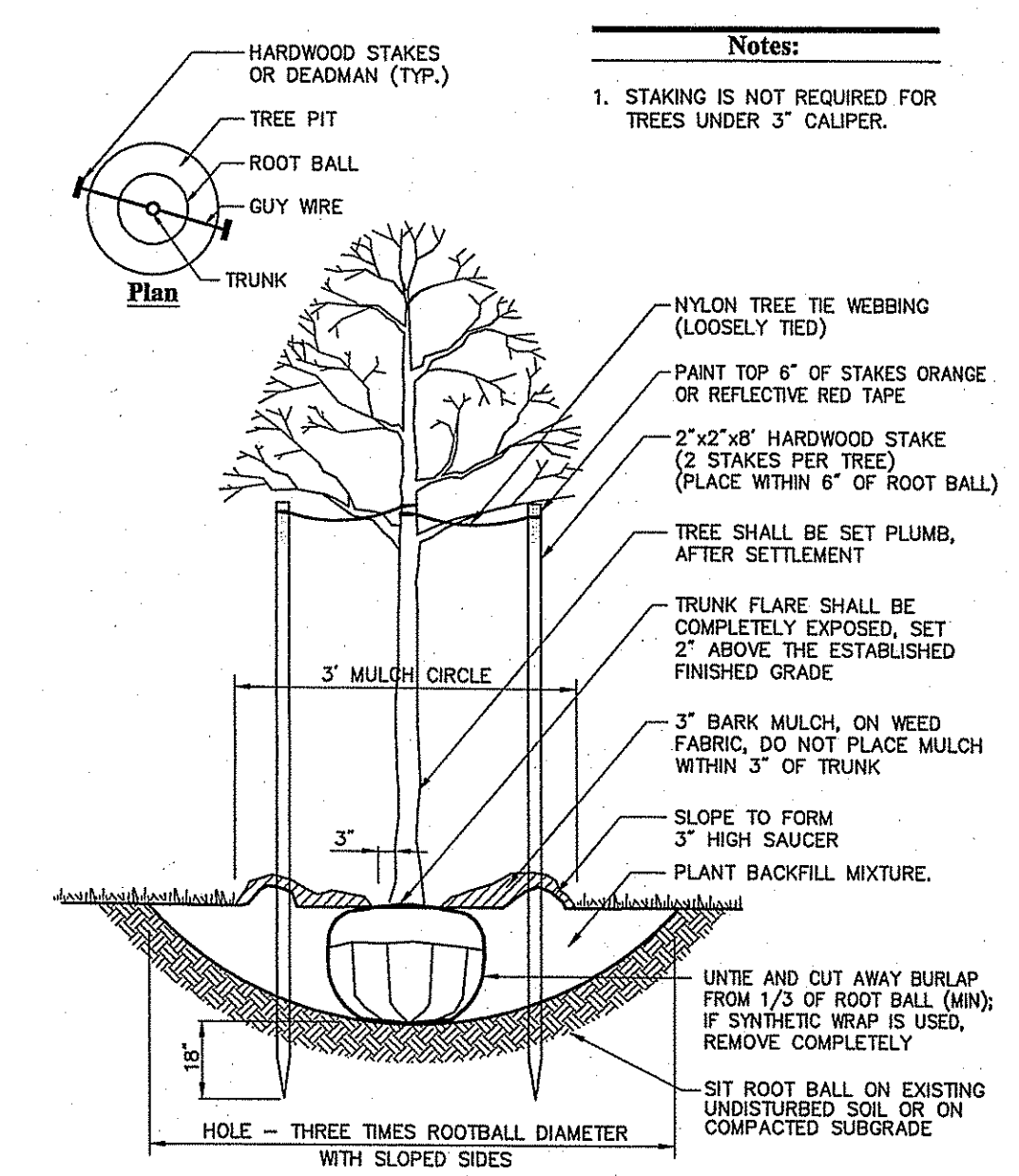


Bollard 6/08
N.T.S. Source: VHB LD_700



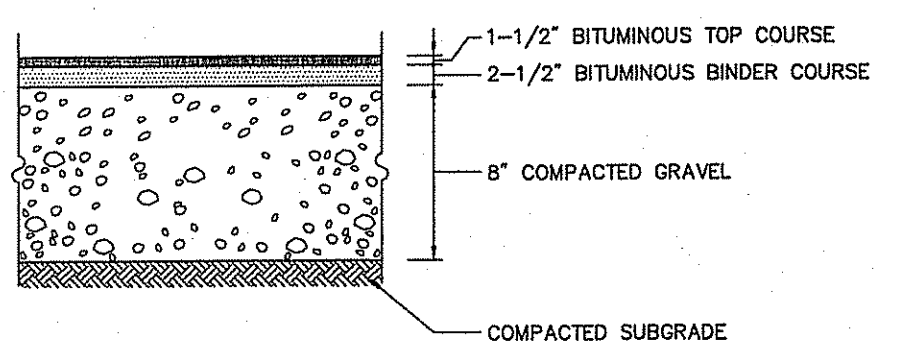
Notes:
1. LOOSEN ROOTS AT THE OUTER EDGE OF ROOTBALL OF CONTAINER GROWN SHRUBS.

Shrub Planting 6/08
N.T.S. Source: VHB LD_602s

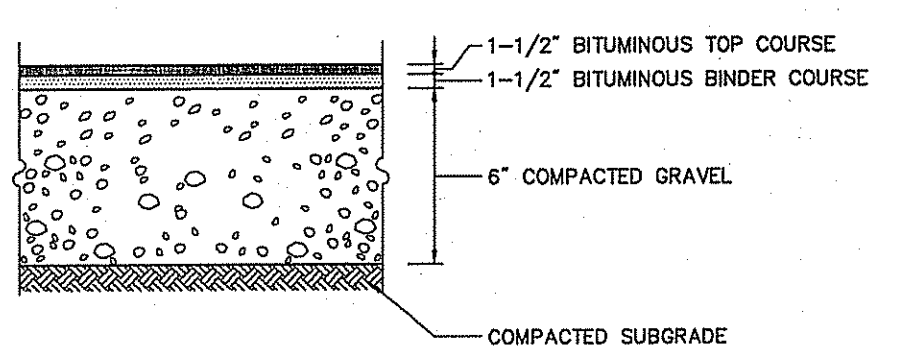


Notes:
1. STAKING IS NOT REQUIRED FOR TREES UNDER 3\"/>

Tree Planting (For Trees Under 4\"/>



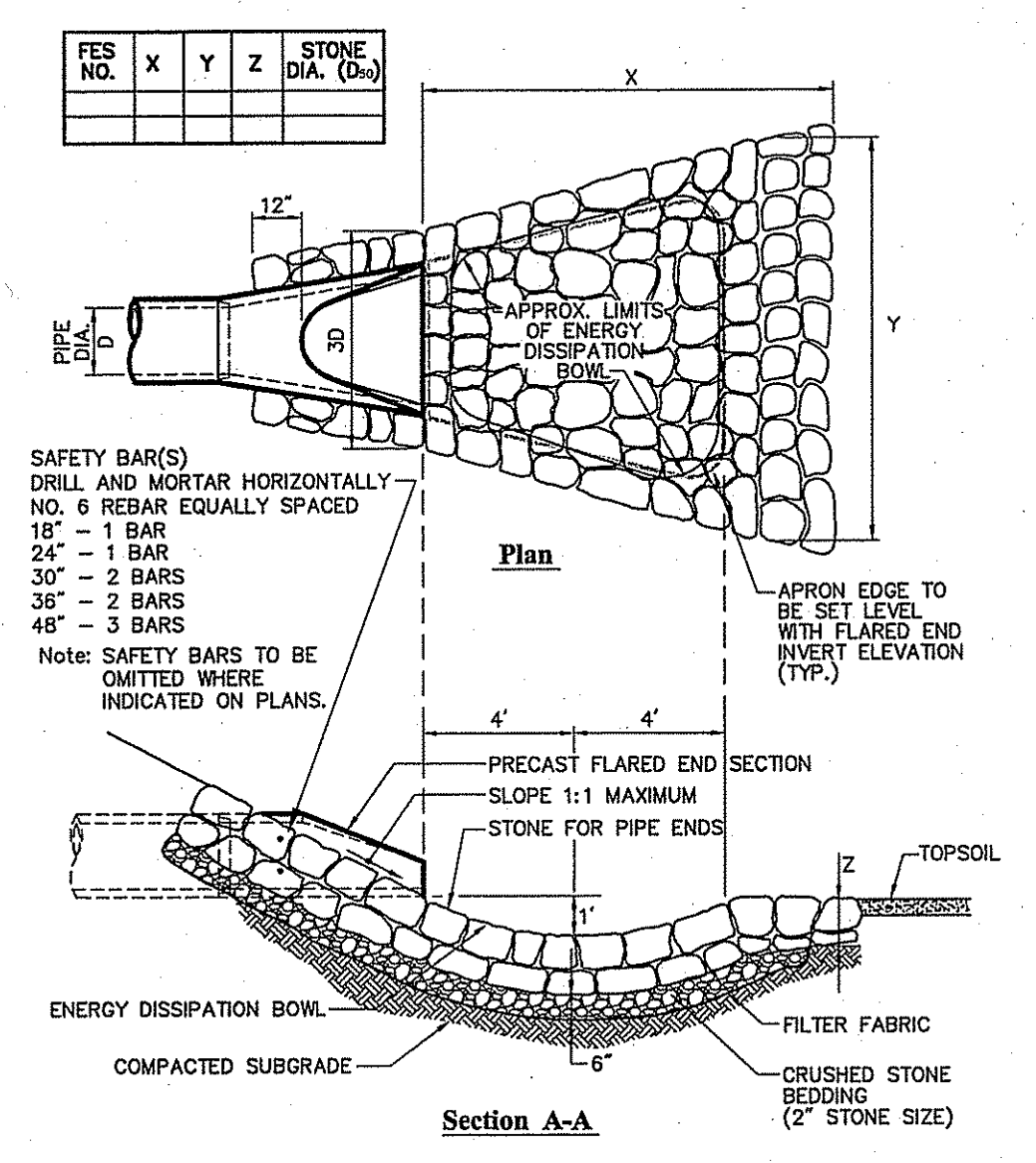
Heavy Duty Flexible Pavement



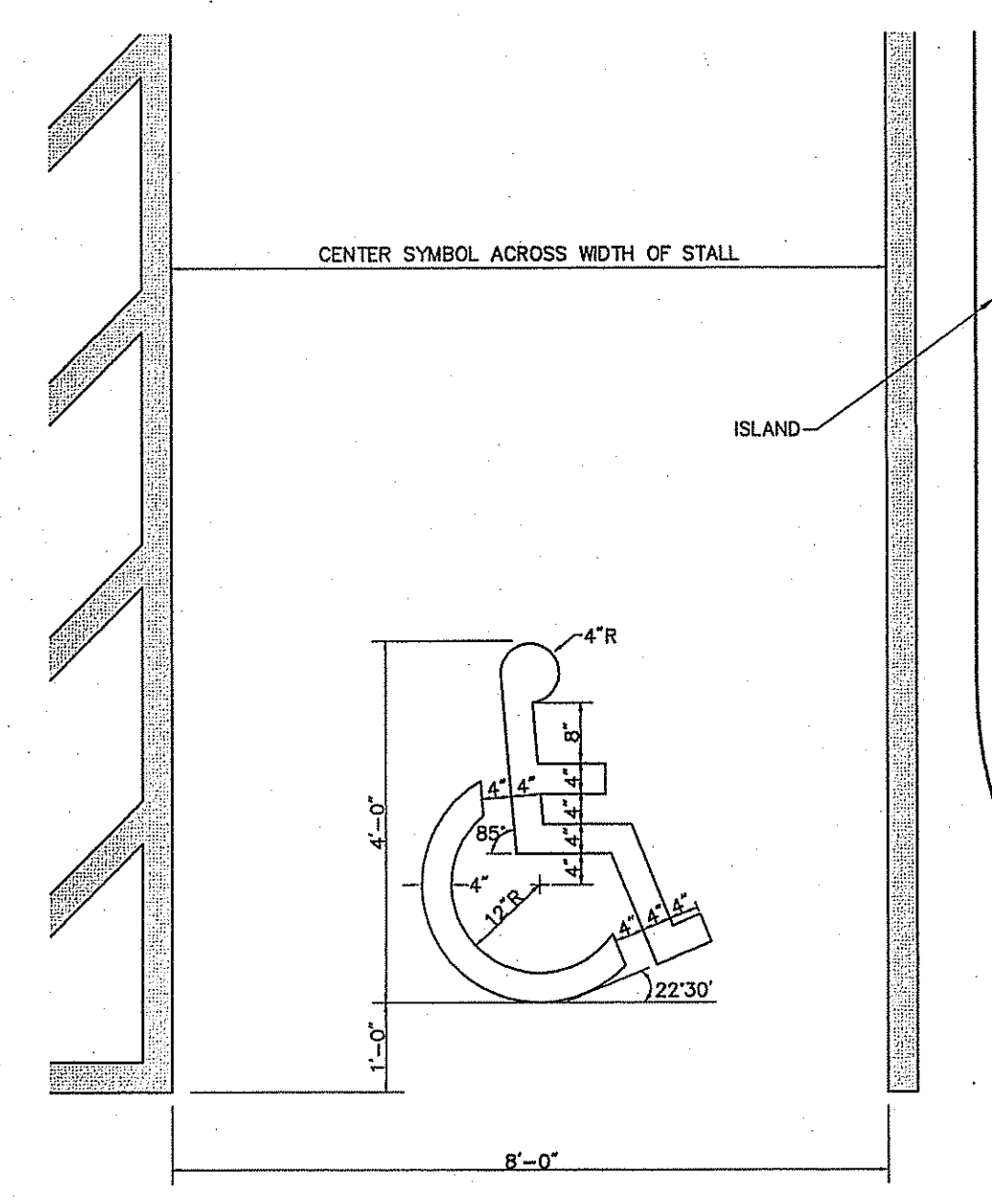
Standard Duty Flexible Pavement

Notes:
PAVEMENT SECTIONS ARE SUBJECT TO CHANGE AND WILL BE BASED ON THE RESULTS OF FURTHER GEOTECHNICAL INVESTIGATIONS.

Bituminous Concrete Pavement Sections 6/08
N.T.S. Source: VHB LD_430s



Flared End Section (FES) with Stone Protection 6/08
N.T.S. Source: VHB LD_134



Accessible Parking Space Symbol 6/08
N.T.S. Source: VHB LD_552s

Design	Revision	Date	Appr.
MAC	MAC	CPN	

Designed by **MAC** Drawn by **MAC** Checked by **CPN**
CAD checked by **EHM** Approved by **EHM**
Scale **As Shown** Date **November 6, 2009**

Stop & Shop Fuel Facility
1410 Atwood Avenue
Johnston, RI
Issued for **Local Permitting**

Kindly be advised that this Permit is not equivalent to a verification of the type or extent of freshwater wetlands on site.

DEPARTMENT OF ENVIRONMENTAL MANAGEMENT
OFFICE OF WATER RESOURCES
FRESHWATER WETLANDS PROGRAM
APPROVED WITH CONDITIONS
AS SPECIFIED IN THE LETTER OF APPROVAL
DATED **JAN 21 2010** FILE # **09-0293**
NO CHANGES ALLOWED WITHOUT PRIOR APPROVAL.
APPROVED PLANS MUST BE AT CONSTRUCTION SITE.

W. Joseph Casey

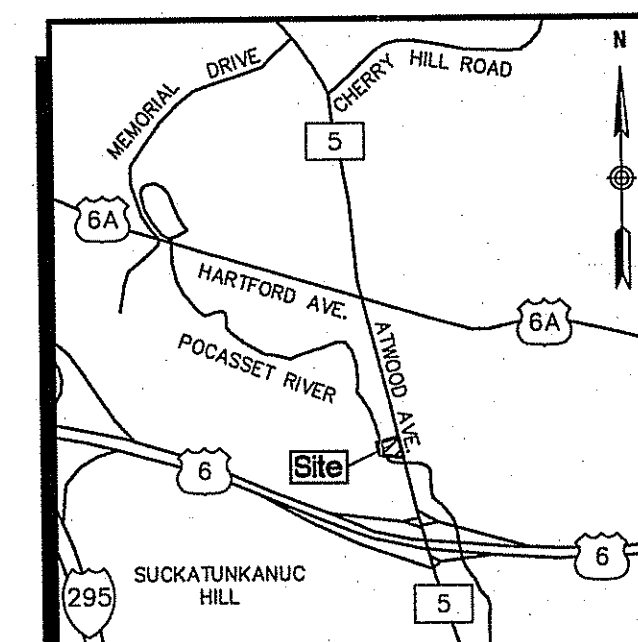
ROBERT B. BRAGGER
No. 3691
11-09-08
REGISTERED PROFESSIONAL ENGINEER
Drawing Number **C-8**
Sheet 9 of 13
Project Number 10763.00



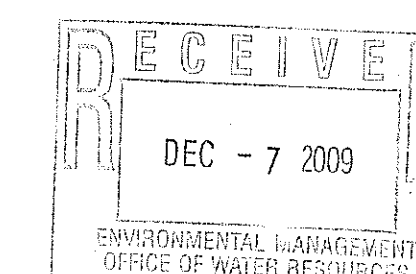
Vanasse Hangen Brustlin, Inc.

Transportation
Land Development
Environmental Services

10 Dornance Street, Suite 400
Providence, Rhode Island 02903
401.272.8100 • FAX 401.273.9694



LOCUS MAP
NOT TO SCALE



DEPARTMENT OF ENVIRONMENTAL MANAGEMENT
OFFICE OF WATER RESOURCES
FRESHWATER WETLANDS PROGRAM
APPROVED WITH CONDITIONS
AS SPECIFIED IN THE LETTER OF APPROVAL
DATED JAN 21 2010 FILE # 09-0293
NO CHANGES ALLOWED WITHOUT PRIOR APPROVAL.
APPROVED PLANS MUST BE AT CONSTRUCTION SITE.

Approval table with columns for No., Revision, Date, and Appr. It includes a signature and a table for tracking revisions.

Super Stop & Shop
Proposed Fueling Facility

1410 Atwood Avenue
Johnston, Rhode Island

Design

Existing Conditions Plan
Assessor's Plat 44-3
Lot 431

Professional seal for Patrick W. McCourt, P.L.S., #1964, dated 4/17/09. Includes drawing number Sv-1 and sheet number 10 of 13.

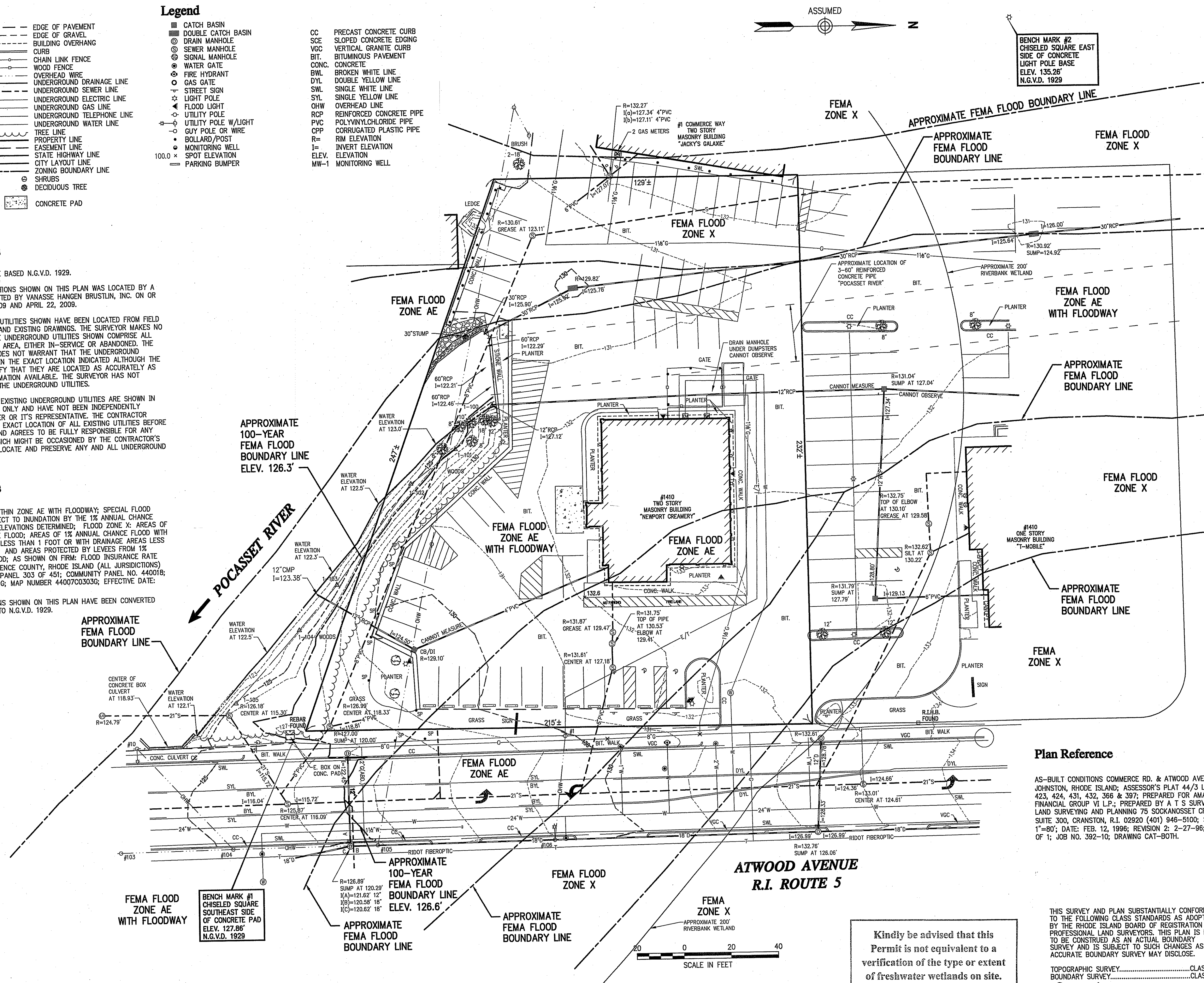
- Legend: Symbols for pavement, catch basins, manholes, fences, utilities, and other site features.

General Notes

- 1. ALL ELEVATIONS ARE BASED N.G.V.D. 1929.
2. THE EXISTING CONDITIONS SHOWN ON THIS PLAN WAS LOCATED BY A FIELD SURVEY...
3. THE UNDERGROUND UTILITIES SHOWN HAVE BEEN LOCATED FROM FIELD SURVEY INFORMATION...
4. THE LOCATIONS OF EXISTING UNDERGROUND UTILITIES ARE SHOWN IN AN APPROXIMATE WAY ONLY...

Zoning Notes

- 1. THE PROJECT IS WITHIN ZONE AE WITH FLOODWAY; SPECIAL FLOOD HAZARD AREAS SUBJECT TO INUNDATION BY THE 1% ANNUAL CHANCE FLOOD...
THE FLOOD ELEVATIONS SHOWN ON THIS PLAN HAVE BEEN CONVERTED FROM N.A.V.D. 1988 TO N.G.V.D. 1929.



BENCH MARK #2
CHISELED SQUARE EAST
SIDE OF CONCRETE
LIGHT POLE BASE
ELEV. 135.26'
N.G.V.D. 1929

BENCH MARK #1
CHISELED SQUARE
SOUTHEAST SIDE
OF CONCRETE PAD
ELEV. 127.86'
N.G.V.D. 1929

Kindly be advised that this
Permit is not equivalent to a
verification of the type or extent
of freshwater wetlands on site.



Plan Reference

AS-BUILT CONDITIONS COMMERCE RD. & ATWOOD AVE. LOCATION JOHNSTON, RHODE ISLAND; ASSESSOR'S PLAT 44/3 LOTS 422, 423, 424, 431, 432, 366 & 397; PREPARED FOR AMALGAMATED FINANCIAL GROUP W.L.P.; PREPARED BY A T S SURVEY, INC. LAND SURVEYING AND PLANNING 75 SOCKANOSSET CROSSROAD, SUITE 300, CRANSTON, R.I. 02920 (401) 948-5100; SCALE: 1"=80'; DATE: FEB. 12, 1996; REVISION 2: 2-27-96; SHEET 1 OF 1; JOB NO. 392-10; DRAWING CAT-BOTH.

THIS SURVEY AND PLAN SUBSTANTIALLY CONFORM TO THE FOLLOWING CLASS STANDARDS AS ADOPTED BY THE RHODE ISLAND BOARD OF REGISTRATION FOR PROFESSIONAL LAND SURVEYORS...
TOPOGRAPHIC SURVEY.....CLASS III
BOUNDARY SURVEY.....CLASS IV
DATE 4/17/09

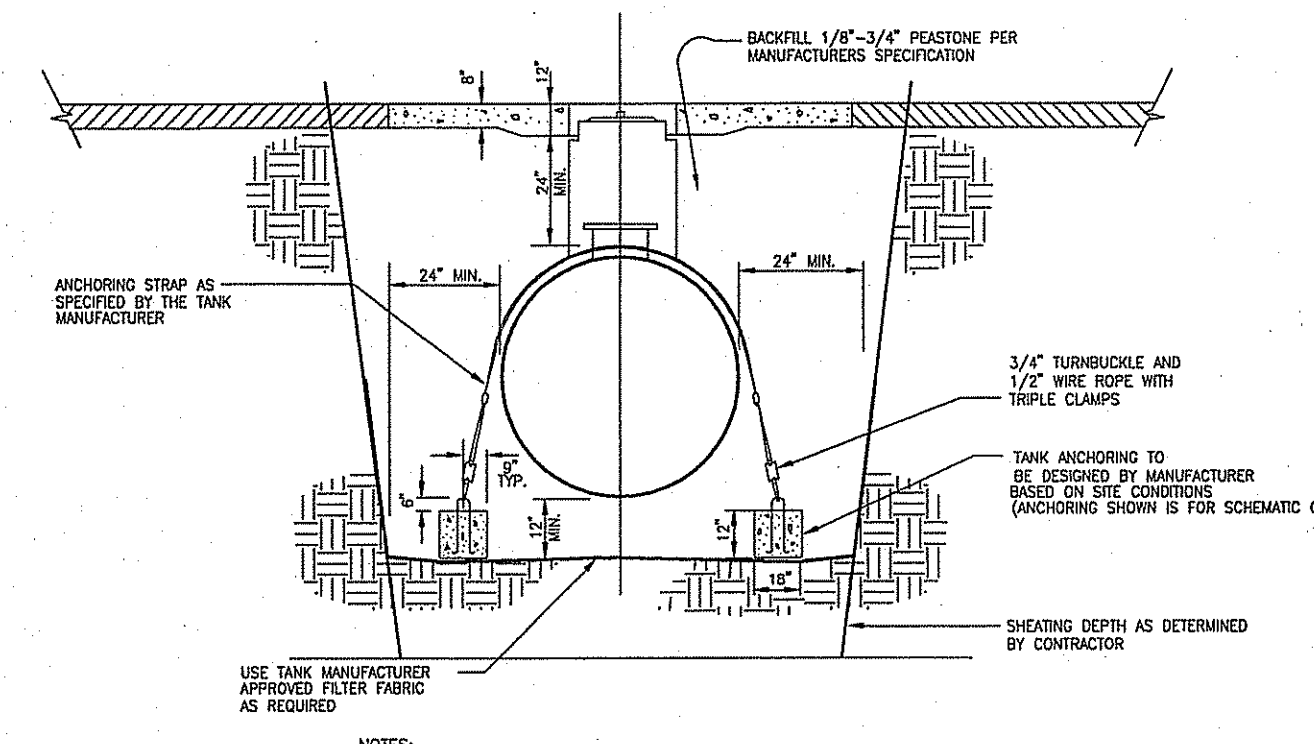
Saved Thursday, November 05, 2009 4:07:22 PM MARKCOSTA Picked Friday, November 06, 2009 4:39:27 PM Costa, Mark



Vanasse Hangen Brustlin, Inc.

Transportation
Land Development
Environmental Services

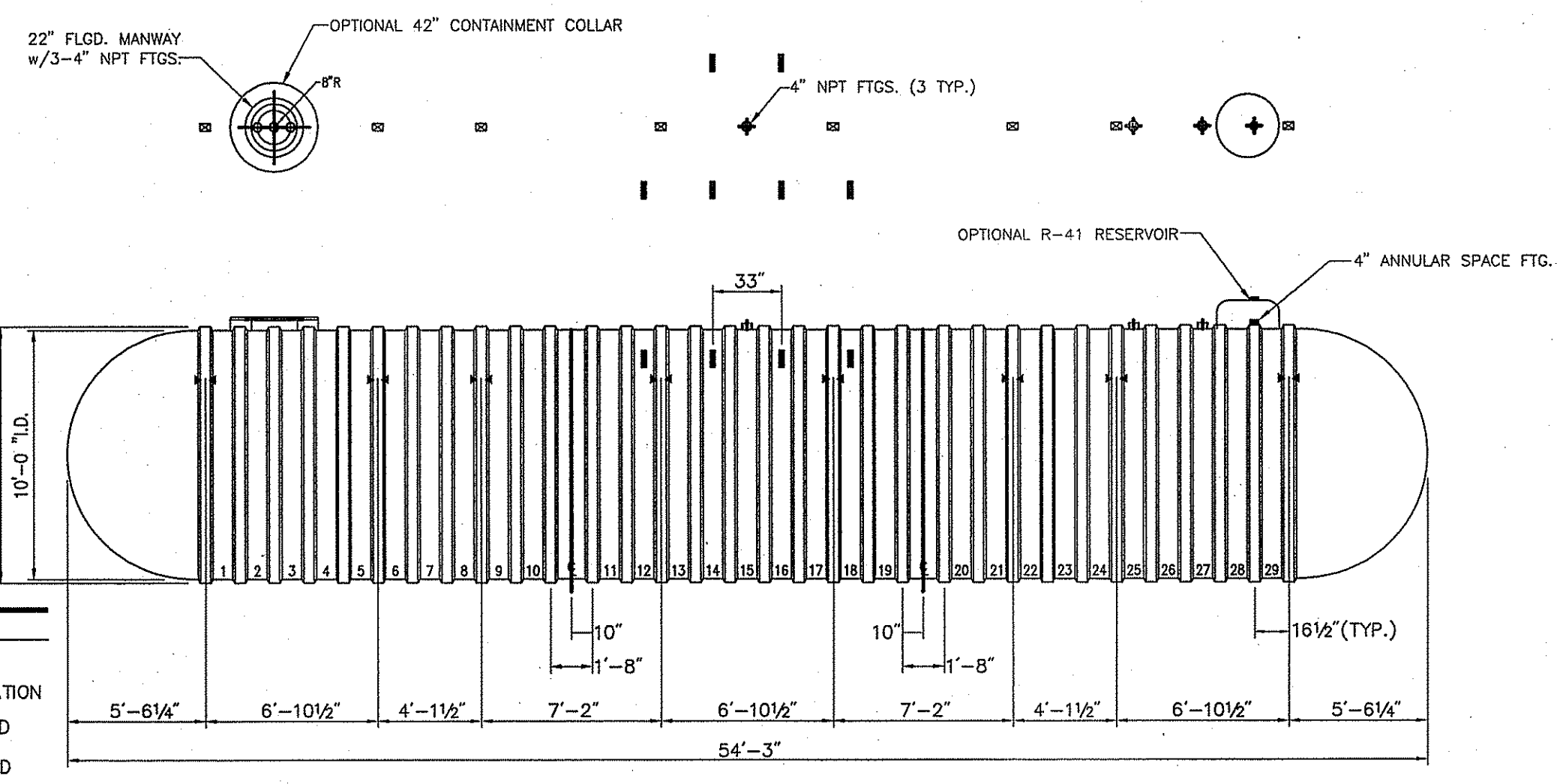
101 Walnut Street, P.O. Box 9151
Watertown, Massachusetts 02471
617.924.1770 • FAX 617.924.2286



- Notes:**
- MECHANICAL TANK ANCHORING IS REQUIRED FOR ALL TANK INSTALLATIONS.
 - USE ONLY TANK MANUFACTURERS SPECIFIED ANCHOR STRAPS, NUMBER AND LOCATION IN ACCORDANCE WITH TANK MANUFACTURERS INSTALLATION INSTRUCTIONS.
 - ALL HOLD-DOWN STRAPS MUST BE UNIFORMLY TIGHTENED. STRAPS MUST BE TIGHTENED UNTIL SNUG, BUT CAUSE NO DEFORMATION OF THE TANK.
 - ALL HOLD-DOWN STRAPS OVER THE TANKS ARE NOT ACCEPTABLE AS A MEANS OF ANCHORING TANKS.
 - ALL TANKS ARE TO BE SET LEVEL IN ACCORDANCE WITH MANUFACTURERS INSTALLATION INSTRUCTIONS.
 - CONTRACTOR SHALL PROVIDE SHEATHING, SHORING AND BRACING ON ALL SIDES OF EXCAVATIONS IN ACCORDANCE W/ STATE, LOCAL, AND OSHA REGULATIONS.
 - GROUNDWATER ELEVATION TO BE DETERMINED BY GEOTECHNICAL BORINGS PRIOR TO CONSTRUCTION.
 - TANK EXCAVATION MUST EXTEND AT LEAST 24" BEYOND EACH END OF THE TANK.

Doublewall Tank Anchoring Detail

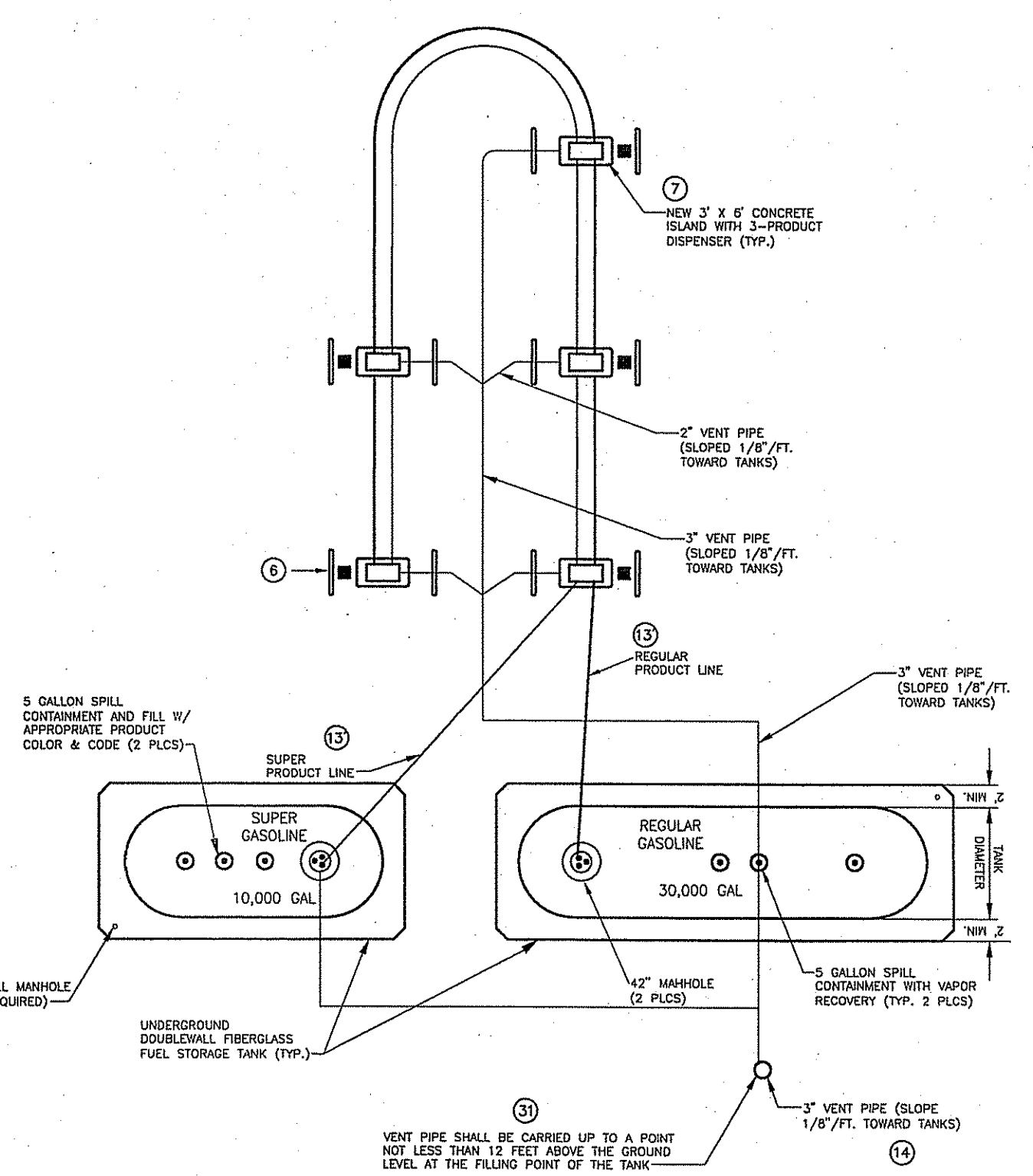
N.T.S. Source: Stop & Shop



- Notes:**
- HOLD DOWN STRAP CLIP
 - HOLD DOWN STRAP LOCATION
 - TYPE "13" LIFT LUG - SD
 - TYPE "13" LIFT LUG - HD

UST Dimensions - Containment Solutions Model DWT-6 SWB-4 (10') - 30M (30,000 GALLONS)

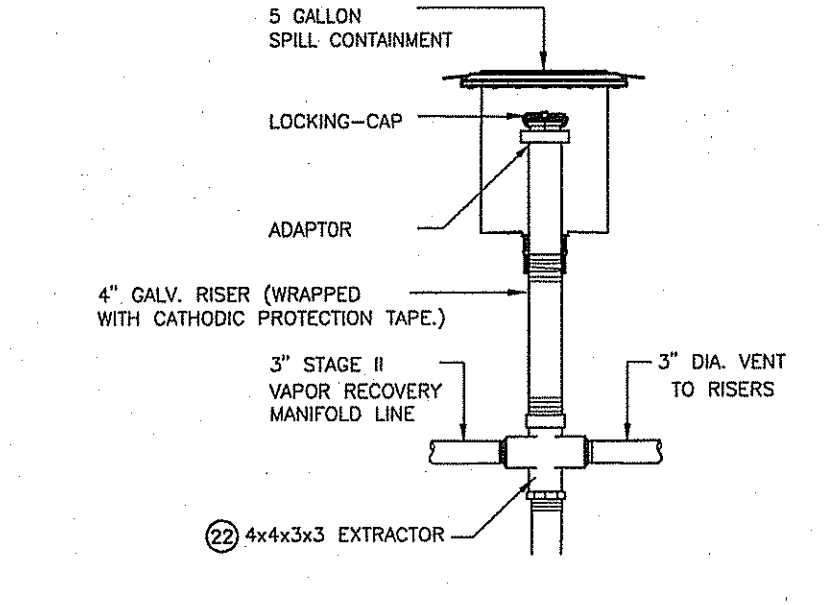
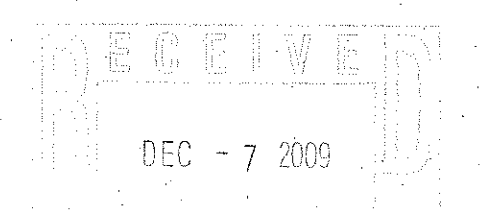
N.T.S. Source: Stop & Shop



- Notes:**
- SEE SITE PLAN FOR SITE SPECIFIC TANKS, ISLANDS, PIPING & LOCATIONS.
- ALL FILL COVERS SHALL BE MARKED, AT LEAST 6 INCHES ONTO THE ADJOINING FIXED METAL, CEMENT OR PAVEMENT SURFACE AND BE PAINTED IN ACCORDANCE W/ THE FOLLOWING COLORS:
- REGULAR UNLEADED = WHITE
PREMIUM UNLEADED = RED
VAPOR BALANCE = ORANGE

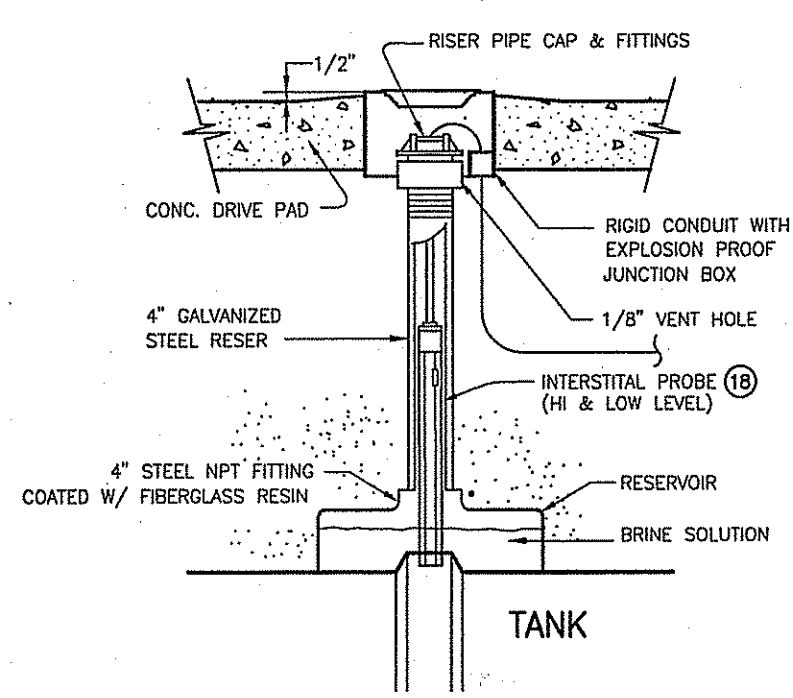
Concrete Drive Pad Plan View

N.T.S. Source: Stop & Shop



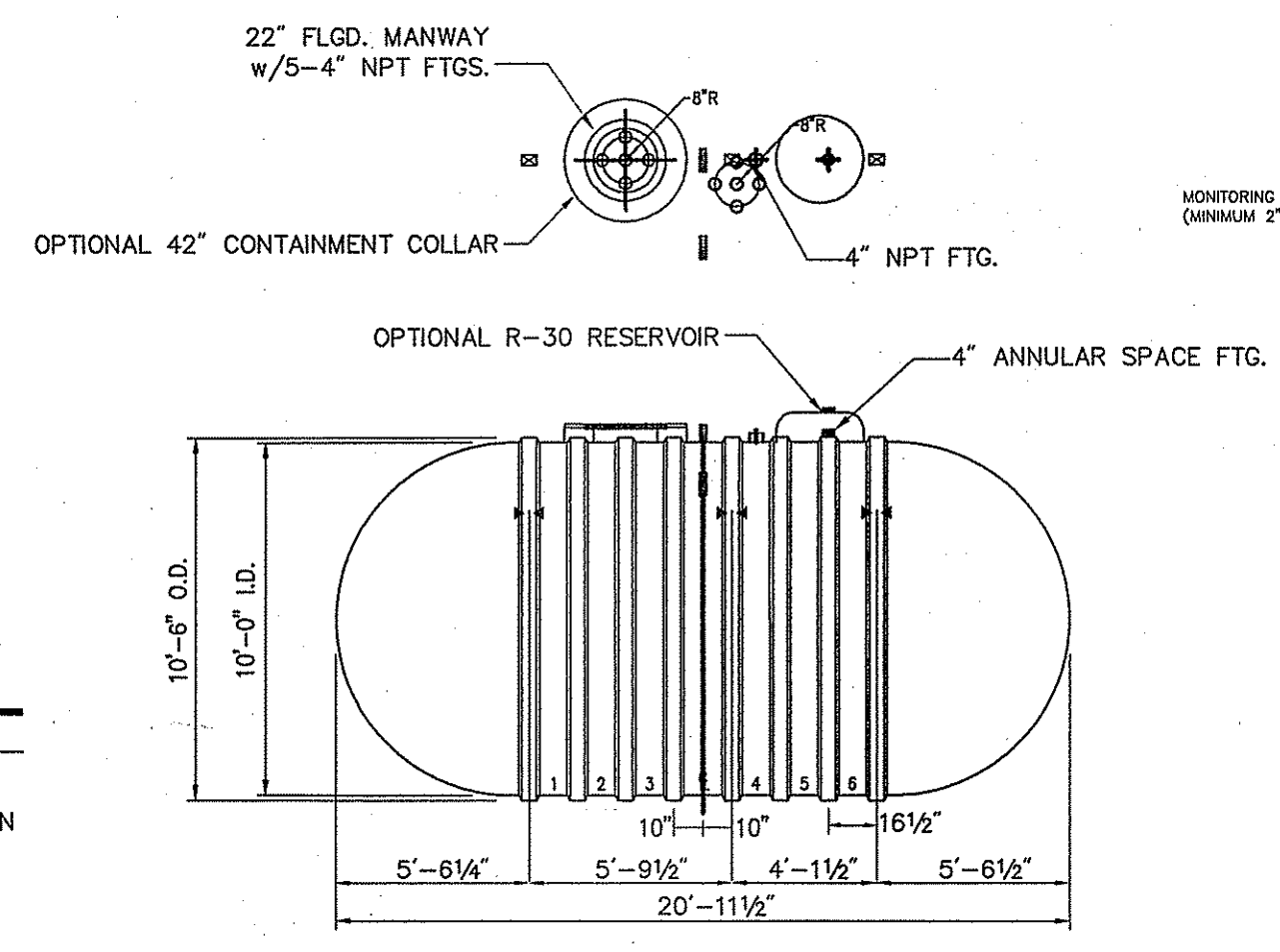
Vapor Connection Detail

N.T.S. Source: Stop & Shop



Interstitial Monitor Riser Detail

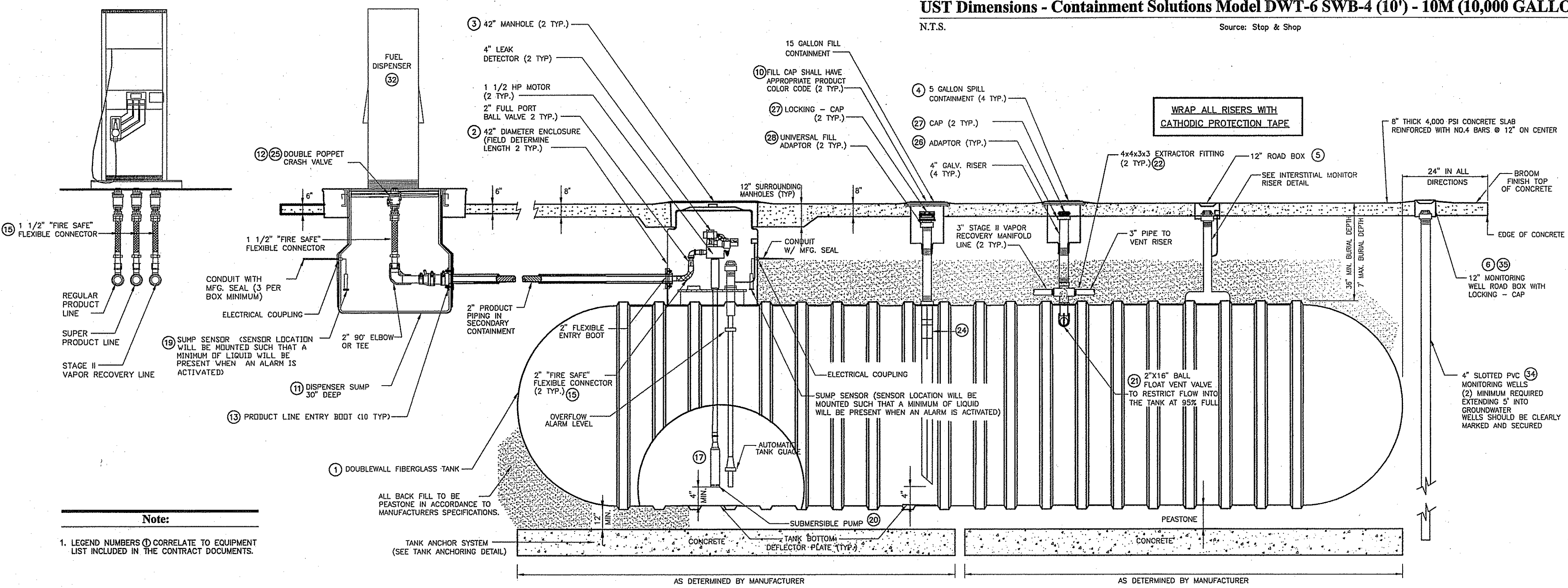
N.T.S. Source: Stop & Shop



- Notes:**
- HOLD DOWN STRAP CLIP
 - HOLD DOWN STRAP LOCATION
 - TYPE "13" LIFT LUG - SD
 - TYPE "13" LIFT LUG - HD

UST Dimensions - Containment Solutions Model DWT-6 SWB-4 (10') - 10M (10,000 GALLONS)

N.T.S. Source: Stop & Shop



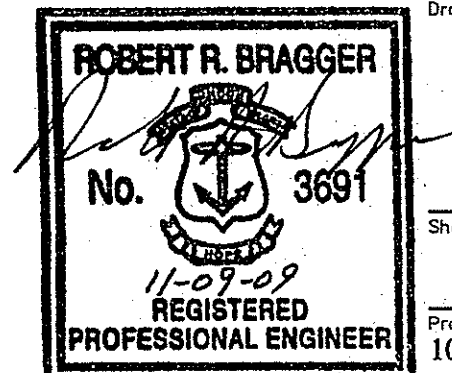
- Note:**
- LEGEND NUMBERS CORRELATE TO EQUIPMENT LIST INCLUDED IN THE CONTRACT DOCUMENTS.

Typical Doublewall Fiberglass Tank Section

N.T.S. Source: Stop & Shop

Kindly be advised that this Permit is not equivalent to a verification of the type or extent of freshwater wetlands on site.

DEPARTMENT OF ENVIRONMENTAL MANAGEMENT
OFFICE OF WATER RESOURCES
FRESHWATER WETLANDS PROGRAM
APPROVED WITH CONDITIONS
AS SPECIFIED IN THE LETTER OF APPROVAL
DATED JAN 21 2010 FILE # 09-1293
NO CHANGES ALLOWED WITHOUT PRIOR APPROVAL.
APPROVED PLANS MUST BE AT CONSTRUCTION SITE.



Drawing Number
T-3
Sheet 12 of 13
11-8-
Project Number
10763.00

No.	Revision	Date	Appr.

Stop & Shop Fuel Facility

1410 Atwood Avenue
Johnston, RI
Issued for
Local Permitting

Double Walled Fiberglass Tank Details

