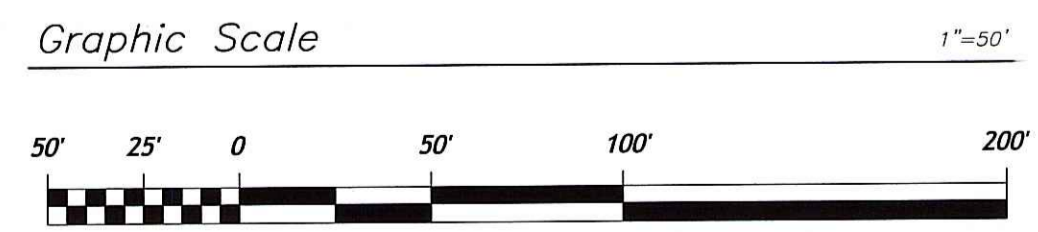


- NOTES:**
1. INFORMATION SHOWN ON THIS PLAN WAS OBTAINED FROM A PLAN PROVIDED BY MR. HAROLD CAHOON ENTITLED: "WETLANDS PLAN, ASSESSOR'S PLAT Q, LOT 62, FRANK LOW STREET & CONGDON STREET, NARRAGANSETT, RHODE ISLAND" PREPARED FOR: MARK CULLION, DATE: 12-23-03, SHEET 1 OF 2, PREPARED BY: CARRIGAN ENGINEERING, INC.
 2. DEPICTED BOUNDARY SURVEY REPORTEDLY CONFORMS WITH A CLASS I STANDARD AS ADOPTED BY THE RHODE ISLAND REGISTRATION OF PROFESSIONAL LAND SURVEYORS.
 3. WETLAND FLAGGING AND DELINEATION (SERIES B, C, D, F, SB, AND ASSP) PERFORMED BY NATURAL RESOURCE SERVICES, INC.
 4. WETLAND FLAGGING (SERIES E AND G) PERFORMED BY ECOTONES, INC. IN FEBRUARY, 2006.
 5. WETLAND FLAGGING (SERIES A AND B) PERFORMED BY ECOTONES, INC. IN NOVEMBER, 2009.
 6. 100 YEAR FLOOD ELEVATION SHOWN WAS TAKEN FROM THE PLAN REFERENCED (NOTE 1).



RT Group, Inc.
 Engineered from the Ground Up
 197 Taunton Avenue, Suite 202
 East Providence, Rhode Island 02914
 T 401 438 3100 F 401 438 5275

DSGN	SWO						
DR	EW						
CHK	JBR						
APVD	JBR	No.	DATE	REVISIONS	BY	APVD	

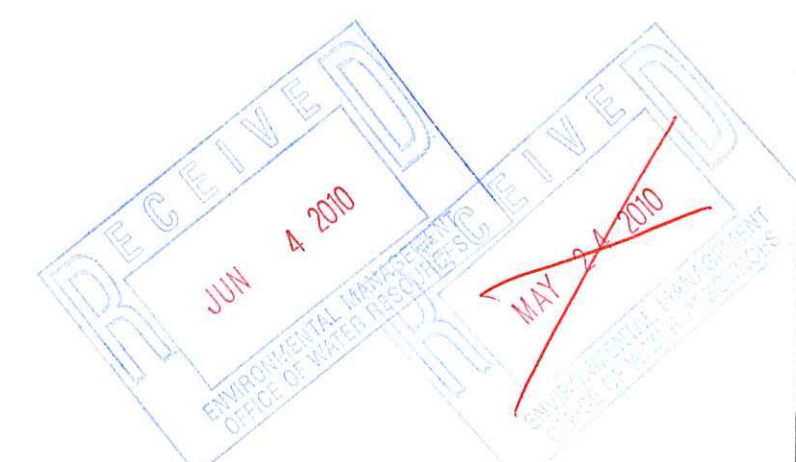
SUBDIVISION OF LOT 62, ASSESSOR'S PLAT Q
 NARRAGANSETT, RHODE ISLAND
 Deslandes Construction, Inc.
 620 Warwick Avenue
 Warwick, Rhode Island

EXISTING CONDITIONS PLAN
 DEPARTMENT OF ENVIRONMENTAL MANAGEMENT
 OFFICE OF WATER RESOURCES
 FRESHWATER WETLANDS PROGRAM

STEVEN W. OTTEN
 No. 8429
 REGISTERED PROFESSIONAL ENGINEER CIVIL

SHEET 1 OF 3
 DWG No. C-01
 DATE DEC 2009
 PROJ No. 05124.03

APPROVED WITH CONDITIONS
 AS SPECIFIED IN THE LETTER OF APPROVAL
 DATED JUL 12 2010 FILE # 10-0115
 NO CHANGES ALLOWED WITHOUT PRIOR APPROVAL
 APPROVED PLANS MUST BE AT CONSTRUCTION SITE



NOTES:

1. AN INSIGNIFICANT ALTERATION PERMIT FOR (1) RESIDENCE ON THE NORTHWEST CORNER OF LOT 62 WAS GRANTED BY RIDEM UNDER APPLICATION No. 05-0102, MAY 19, 2005.
2. THE SITE IS LOCATED WITHIN ZONE C, AS DELINEATED ON FEMA MAP, FIRM, TOWN OF NARRAGANSETT, RI, PANEL 3 OF 9. DEFINED AS AREA OF MINIMAL FLOODING.
3. THE SITE IS LOCATED WITHIN THE HIGH WATER TABLE OVERLAY DISTRICT "B" AND HAS SOILS R_{8A} AND S_f.
4. THE WETLAND AREA IN ITS ENTIRETY IS LESS THAN 3 ACRES AS SUCH THERE IS NO 50 FOOT PERIMETER ASSOCIATED WITH IT.
5. LOTS TO BE SERVICED BY MUNICIPAL WATER AND SEWER. ALL UTILITIES TO BE BURIED WITHIN PROPOSED GRAVEL DRIVEWAYS.
6. THE CONTRACTOR SHALL BE RESPONSIBLE FOR CONTACTING DIG-SAFE AT LEAST 72 HOURS PRIOR TO BEGINNING CONSTRUCTION WORK.

LEGEND:

- 50 --- EXISTING CONTOUR
- 50 --- PROPOSED CONTOUR
- EXISTING STONEWALL
- ▽ G7 WETLAND DELINEATION FLAG (SERIES A-G)
- ▽ ASSF AREA SUBJECT TO STORM FLOW
- ▽ SB STREAM BED
- SILT FENCE/L.O.D.
- LIMIT OF DISTURBANCE (L.O.D.)
- 100' RIVERBANK WETLAND
- AREA SUBJECT TO STORM FLOW (ASSF)
- EXISTING LOT LINE
- PROPOSED LOT LINE
- APPROXIMATE 100 YEAR FLOOD LINE

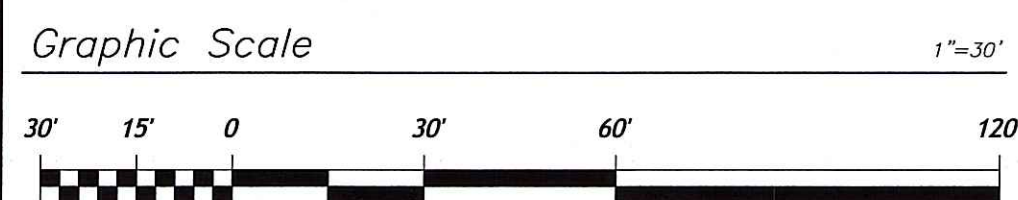
DIMENSIONAL REQUIREMENTS SUMMARY

ZONE R-10, SINGLE FAMILY				
ITEM	REQ'D.	LOT 62-1	LOT 62-2	
LOT SIZE (sq. ft.)	10,000	59,870.37	62,174.41	
LOT WIDTH (ft.)	100	314 ±	173 ±	
LOT FRONTAGE (ft.)	100	22 ± (TOTAL)	45 ± (TOTAL)	
FRONT YARD (ft.)	25	25	25	
REAR YARD (ft.)	20	20	20	
SIDE YARD (ft.)	10	10	10	
BUILDING COVERAGE	25% (MAX.)	4.8%	2.0%	

ORIGINAL LOT SIZE OF LOT 62 = 122,042 S.F. ± (2.80 Ac. ±)

WETLAND SUMMARY

LOT #	LOT AREA	WETLAND AREA	% WETLAND	NET LOT AREA
TOTAL AREA OF SUBDIVISION : 122,042 SF				
TOTAL AREA OF ON-SITE WETLANDS: 19,825.78 SF (16.2%)				
TOTAL AREA OF WETLAND INCLUDING OFF-SITE (APPROX.): 37,689.42 SF (0.87 Ac.)				
62-1	59,870.37 SF	19,453 SF	27.4 %	51,547 SF
62-2	62,174.41 SF	3,477 SF	10.2 %	24,279 SF



RT Group, Inc.
Engineered from the Ground Up
197 Taunton Avenue, Suite 202
East Providence, Rhode Island 02914
T 401 438 3100 F 401 438 5275

DSGN	SWO
DR	EW
CHK	JBR
APVD	JBR
No.	DATE

REVISIONS

BY APVD

BAR IS ONE INCH ON ORIGINAL DRAWING.
0" = 1"
IF NOT ONE INCH ON THIS SHEET, ADJUST SCALES ACCORDINGLY

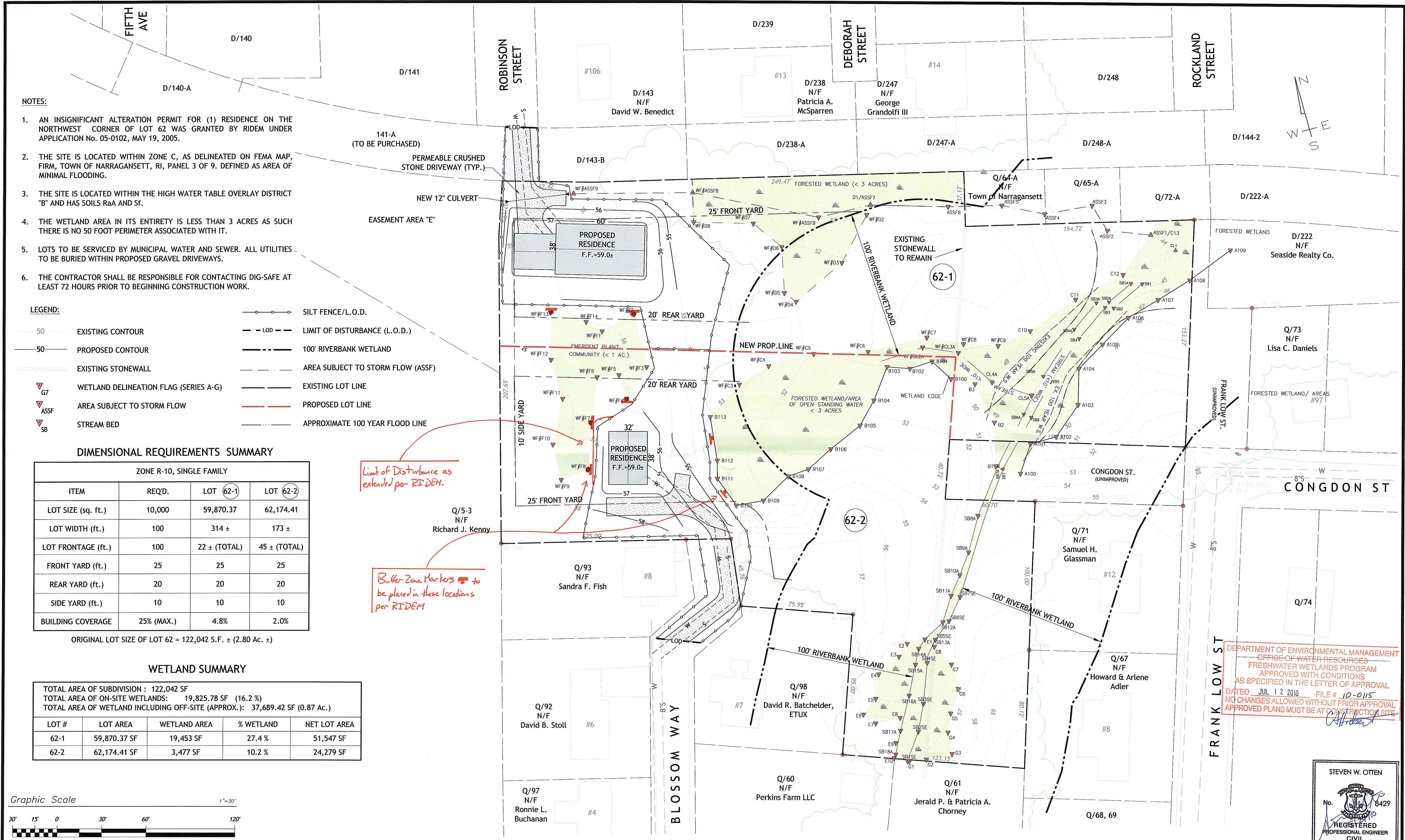
SUBDIVISION OF LOT 62, ASSESSOR'S PLAT Q
NARRAGANSETT, RHODE ISLAND
Deslandes Realty, LLC
620 Warwick Avenue
Warwick, Rhode Island

SUBDIVISION PLAN

STEVEN W. OTTEN
No. 6429
REGISTERED PROFESSIONAL ENGINEER CIVIL

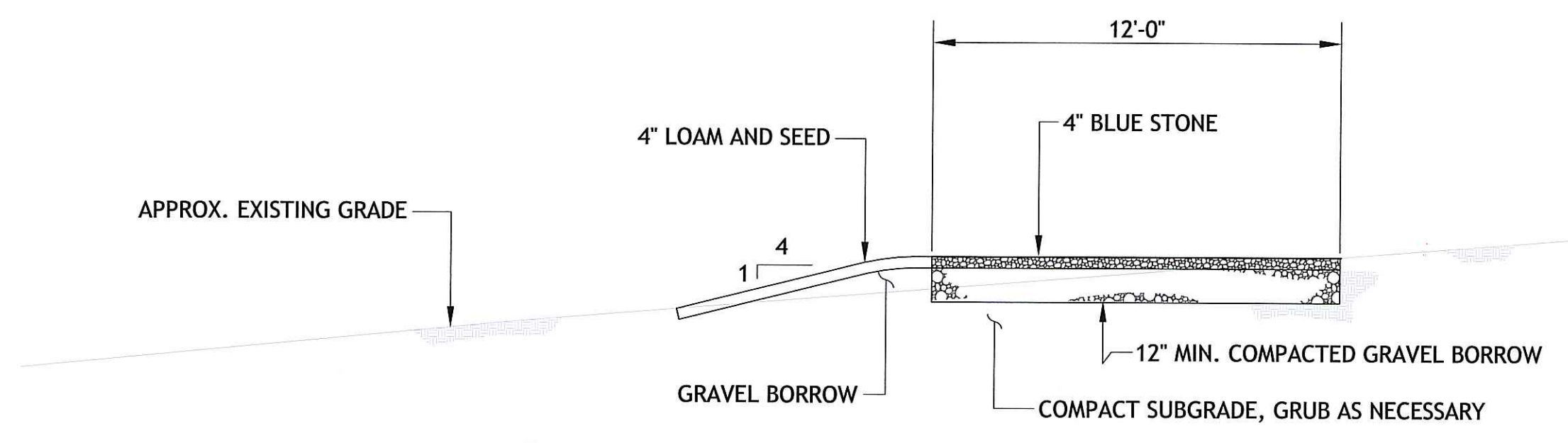
SHEET 2 OF 3
DWG No. C-02
DATE DEC 2009
PROJ No. 05124.03

DEPARTMENT OF ENVIRONMENTAL MANAGEMENT
OFFICE OF WATER RESOURCES
FRESHWATER WETLANDS PROGRAM
APPROVED WITH CONDITIONS
AS SPECIFIED IN THE LETTER OF APPROVAL
DATED JUL 12 2010 FILE # 10-015
NO CHANGES ALLOWED WITHOUT PRIOR APPROVAL
APPROVED PLANS MUST BE AT CONSTRUCTION SITE



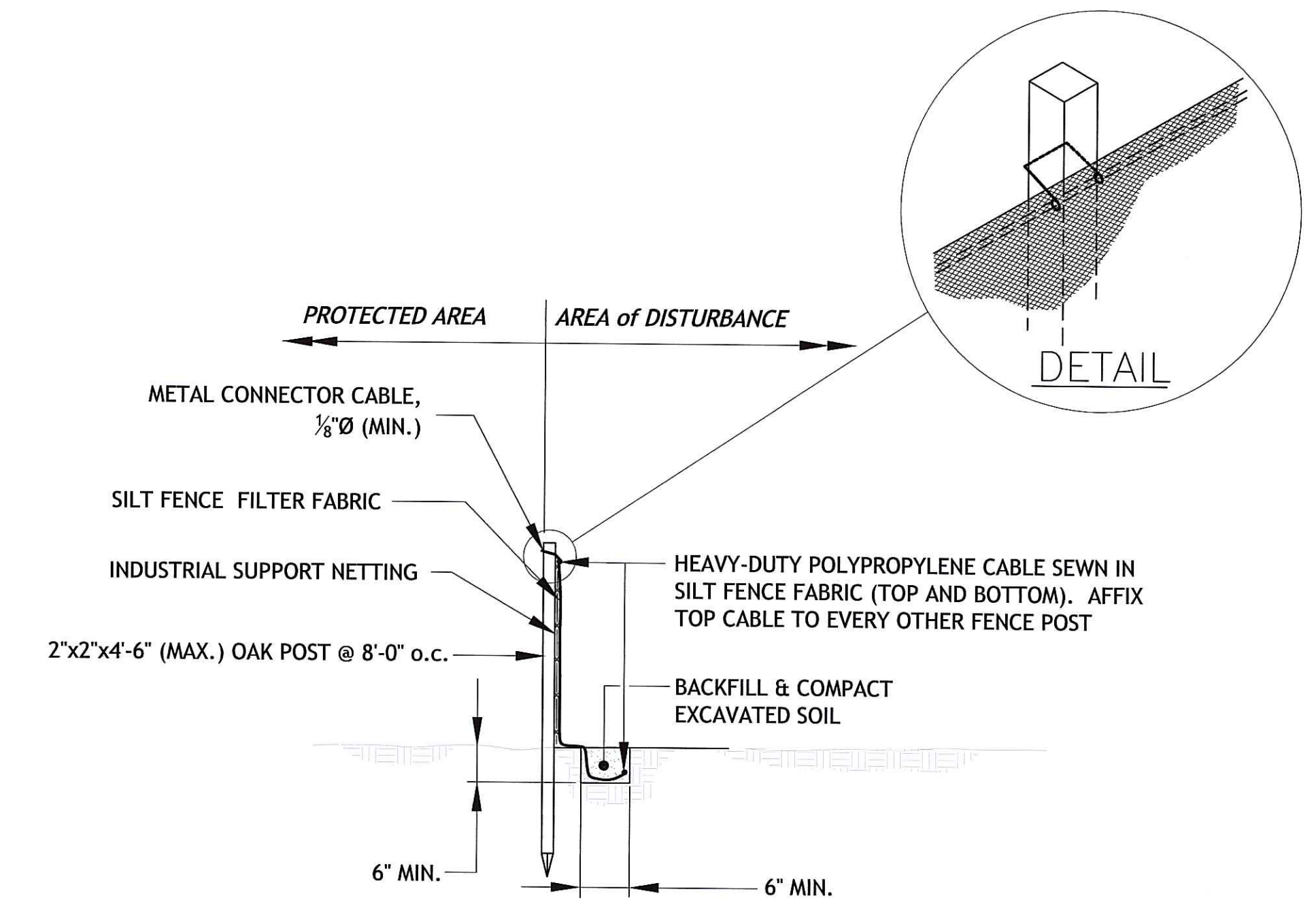
Limit of Disturbance as extended per RIDEM.

Buffer Zone Markers to be placed in these locations per RIDEM



- NOTES:**
1. STRIP TOPSOIL/LOAM AS NECESSARY BENEATH THE PROPOSED DRIVEWAY PRIOR TO GRAVEL BORROW PLACEMENT.
 2. PLACE GRAVEL BORROW TO THE GRADES AND MINIMUM DIMENSIONS SHOWN, AND DRESS WITH 4 INCHES OF 1/2" TO 3/4" DECORATIVE BLUE STONE. GRAVEL BORROW SHALL CONFORM TO ITEM M.01.02.1 OF THE RHODE ISLAND DEPARTMENT OF TRANSPORTATION STANDARD SPECIFICATIONS.
 3. UPON COMPLETION, DRESS SIDES OF DRIVE WAY WITH TOPSOIL/LOAM AND SEED.

TYPICAL GRAVEL DRIVEWAY SECTION
SCALE: 3/4" = 1'-0"



- NOTES:**
1. SET POSTS MINIMUM DEPTH OF 12" AND EXCAVATE A 6" x 6" TRENCH UPSLOPE ALONG THE LINE OF POSTS.
 2. STAPLE WIRE FENCING TO THE POSTS.
 3. ATTACH THE FILTER FABRIC TO THE WIRE FENCE AND EXTEND IT INTO THE TRENCH.
 4. BACKFILL AND COMPACT THE EXCAVATED SOIL.

SILT FENCE DETAIL
SCALE: NONE

DEPARTMENT OF ENVIRONMENTAL MANAGEMENT
OFFICE OF WATER RESOURCES
FRESHWATER WETLANDS PROGRAM
APPROVED WITH CONDITIONS
AS SPECIFIED IN THE LETTER OF APPROVAL
DATED JUL 12 2010 FILE # 10-015
NO CHANGES ALLOWED WITHOUT PRIOR APPROVAL
APPROVED PLANS MUST BE AT CONSTRUCTION SITE

RECEIVED
JUN 4 2010

STEVEN W. OTTEN
No. 8429
REGISTERED
PROFESSIONAL ENGINEER
CIVIL

RECEIVED
MAY 12 2010

rtg RT Group, Inc.
Engineered from the Ground Up
197 Taunton Avenue, Suite 202
East Providence, Rhode Island 02914
T 401 438 3100 F 401 438 5275
Geotechnical Waterfront Structural Civil Geo-Environmental

DSGN	SWO				
DR	DJA				
CHK	JBR				
APVD	JBR	No.	DATE	REVISIONS	BY APVD

BAR IS ONE INCH ON ORIGINAL DRAWING.
0 1"
IF NOT ONE INCH ON THIS SHEET, ADJUST SCALES ACCORDINGLY

SUBDIVISION OF LOT 62, ASSESSOR'S PLAT Q
NARRAGANSETT, RHODE ISLAND
Deslandes Construction, Inc.
620 Warwick Avenue
Warwick, Rhode Island

SECTIONS AND DETAILS

SHEET	3 OF 3
DWG No.	C-03
DATE	DEC 2009
PROJ No.	05124.03