

Site Plans

Issued for: **Permitting**

Date Issued: June 30, 2010

Latest Issue: November 24, 2010

Index

No.	Drawing Title	Latest Issue
C-1	Legend and General Notes	6/30/2010
C-2	Layout and Materials Plan	11/24/2010
C-3	Grading, Drainage, and Erosion Control Plan	11/24/2010
C-4	Utility Plan	11/24/2010
C-5	Site Details 1	11/24/2010
C-6	Site Details 2	11/24/2010
C-7	Site Details 3	11/24/2010
L-1	Planting Plan	6/30/2010

Reference Drawings

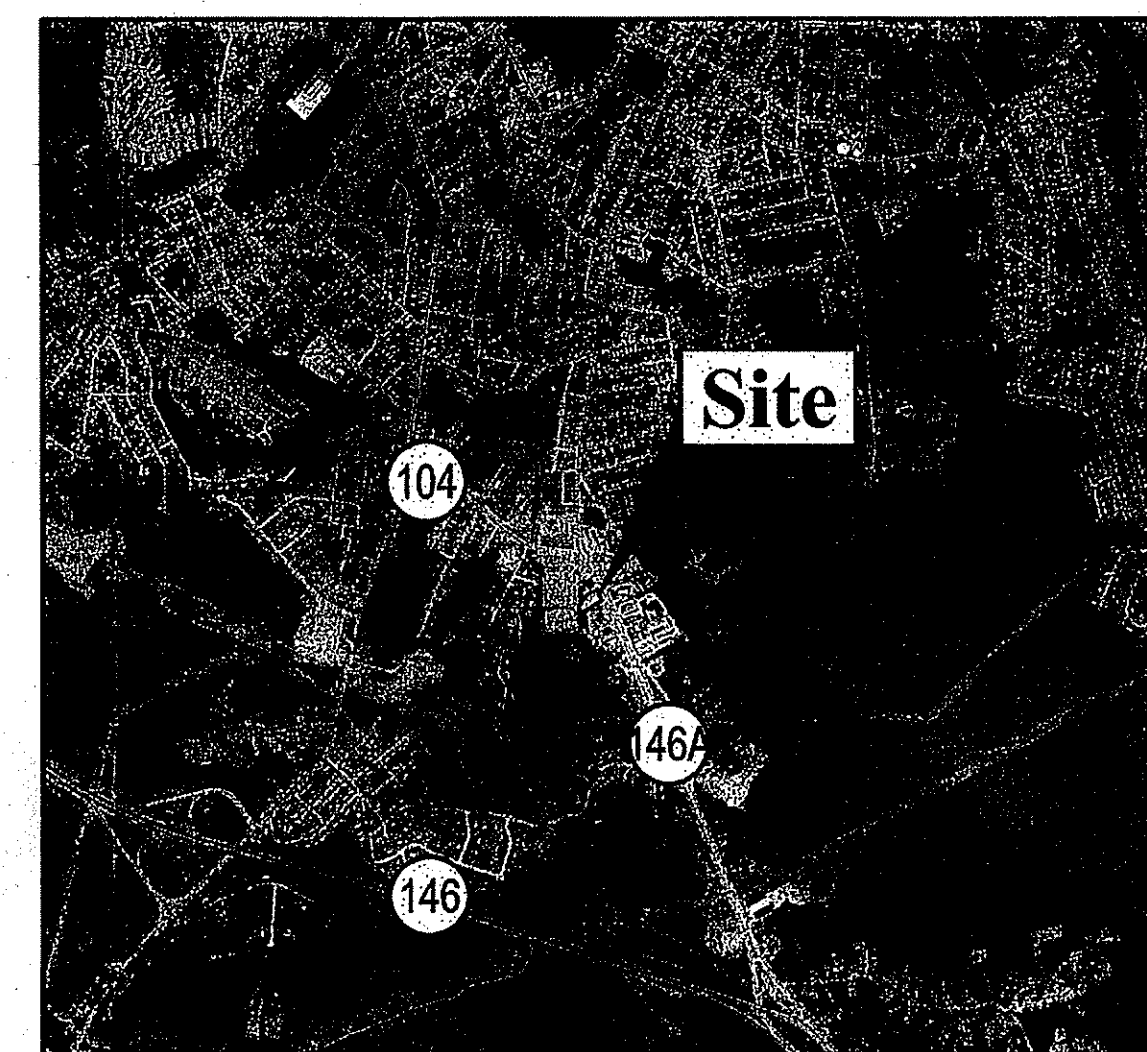
Sv-1	Property Line Plan Assessor's Plat 21 Lot 67	4/24/09
Sv-2	Existing Conditions Plan Assessor's Plat 21 Lot 67	4/24/09

Proposed Stop & Shop Fuel Facility

35 Eddie Dowling Highway
North Smithfield, Rhode Island

Property Information

Owner:
Mars Enterprises, LLC
P.O. Box 7179
Cumberland, Rhode Island 02864



Site Location Map



0 1000 2000 Feet

Map: 21A
Lot: 67

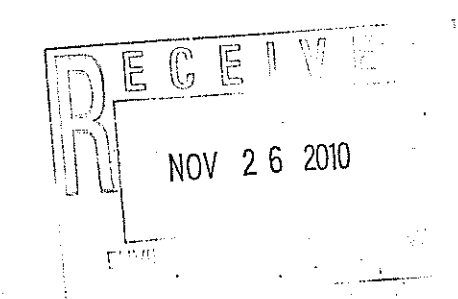
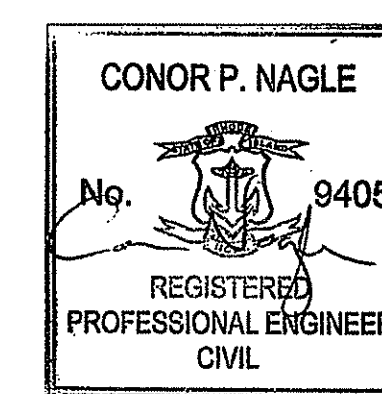
Civil Engineer/Transportation/
Surveyor/Landscape Architect:
Vanasse Hangen Brustlin, Inc.
101 Walnut Street
Watertown, MA 02471
617-924-1770 • Fax 617-924-2286

Site Lighting/Electrical:
Engineering Advantage, Inc.
2 Park Street
Boston, Massachusetts
(617) 288-3969 • Fax (617) 825-8922

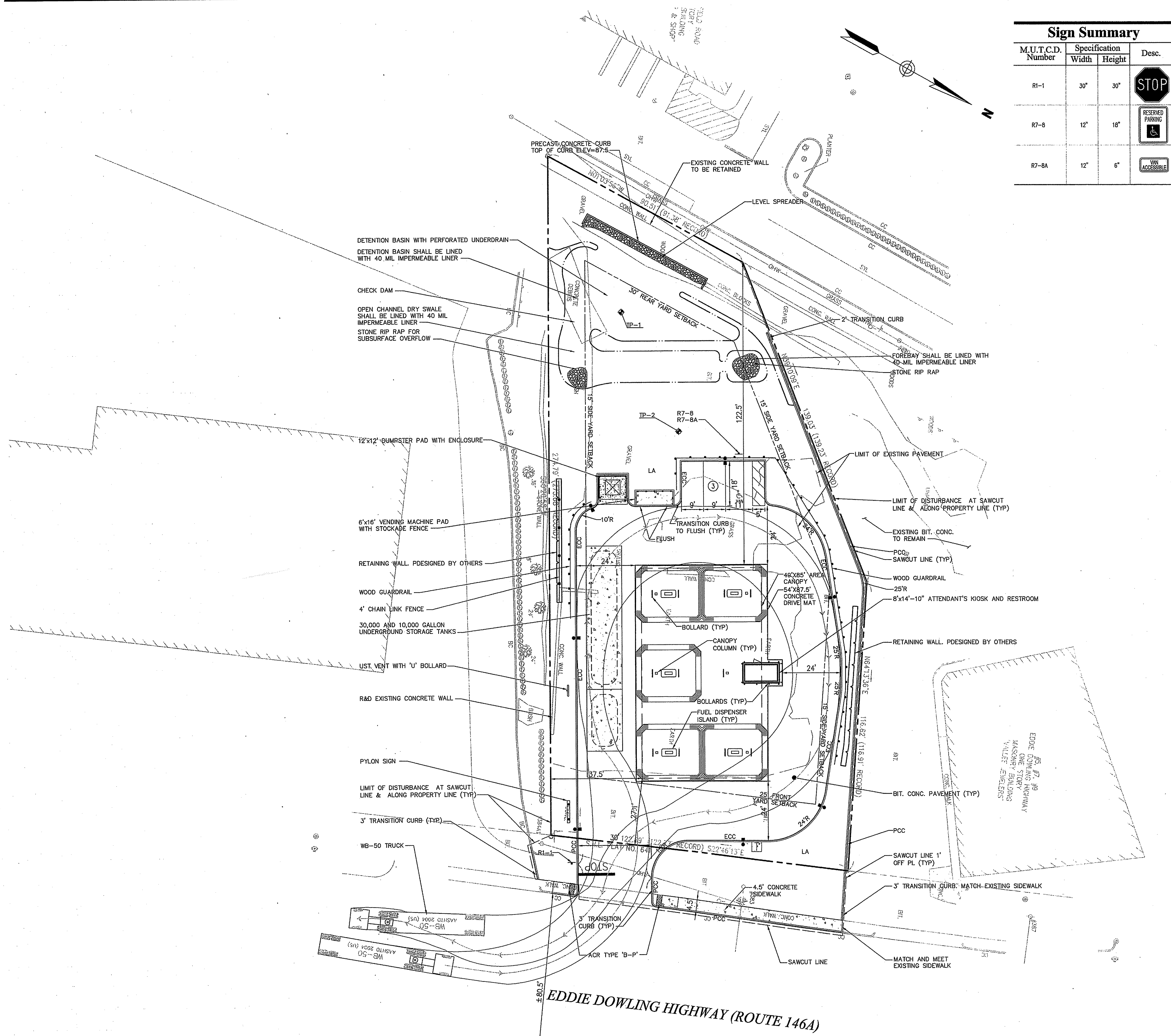
Signage:
Agnoli Sign Company
722 Worthington Street
Springfield, MA 01105
(413) 732-5111 • Fax (413) 787-2169



Vanasse Hangen Brustlin, Inc.
Transportation
Land Development
Environmental Services
101 Walnut Street, P.O. Box 9151
Watertown, Massachusetts 02471
617.924.1770 • FAX 617.924.2286



DEPARTMENT OF ENVIRONMENTAL MANAGEMENT
OFFICE OF WATER RESOURCES
FRESHWATER WETLANDS PROGRAM
APPROVED WITH CONDITIONS
AS SPECIFIED IN THE LETTER OF APPROVAL
DATED DEC 13 2010 FILE # 10-0190
NO CHANGES ALLOWED WITHOUT PRIOR APPROVAL.
APPROVED PLANS MUST BE AT CONSTRUCTION SITE.
Michael D. Wondolowski



Sign Summary

M.U.T.C.D. Number	Specification		Desc.
	Width	Height	
R1-1	30"	30"	STOP
R7-8	12"	18"	RESERVED PARKING
R7-8A	12"	6"	VAN ACCESSIBLE

Site Summary

Zoning Summary

Zoning District(s)	Neighborhood District (BN)	
Zoning Regulation Requirements	Required	Provided
LOT AREA	29,041 SF	29,041 SF
FRONT YARD SETBACK	25 FT	27 FT±
SIDE YARD SETBACK	15 FT	33 FT±
REAR YARD SETBACK	30 FT	122.5 FT
MAX. FLOOR AREA RATIO	0.25	0.01 ±
MAX. BUILDING HEIGHT	35 FT	< 35 FT

Parking Summary

Parking Regulation Requirements	Required	Provided
STANDARD SPACE DIMENSIONS	9' x 18'	9' x 18'
STANDARD SPACES	2	2
VAN ACCESSIBLE SPACES	1	1
TOTAL SPACES	3	3

* ADA/STATE/LOCAL REQUIREMENTS

Parking Requirements:

119 SF x 1 SPACES/75 SF OF SALES AREA = 2
 1 EMPLOYEES x .5 SPACES/EMPLOYEES = 1
TOTAL PARKING REQUIRED = 3

Vanasse Hangen Brustlin, Inc.

Transportation
 Land Development
 Environmental Services

101 Walnut Street, P.O. Box 9151
 Watertown, Massachusetts 02471
 617.924.1770 • FAX 617.924.2286

No.	Revision	Date	Appvd.
2	Response to DEM Comments	11/24/2010	CPN
1	Checklist Resubmission	8/13/2010	CPN

Designed by **DAG** Drawn by **DAG** Checked by **CPN**
 CAD checked by **BKF** Approved by **RPM**
 Scale 1"=20' Date **June 30, 2010**
 Project Title

Proposed Fuel Facility

35 Eddie Dowling Highway
 North Smithfield, Rhode Island

Issued for
Local Permitting

Not Approved for Construction

DEPARTMENT OF ENVIRONMENTAL MANAGEMENT
 OFFICE OF WATER RESOURCES
 FRESHWATER WETLANDS PROGRAM
 APPROVED WITH CONDITIONS
 AS SPECIFIED IN THE LETTER OF APPROVAL
 DATED **DEC 1 2010** FILE # **10-0190**
 NO CHANGES ALLOWED WITHOUT PRIOR APPROVAL.
 APPROVED PLANS MUST BE AT CONSTRUCTION SITE.

Drawing Title
Layout and Materials Plan

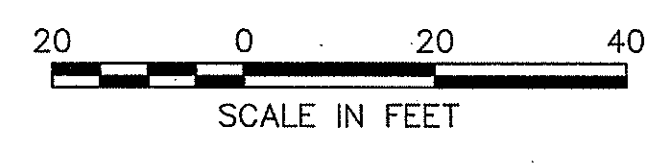
NOV 26 2010

Drawing Number
C-2

Sheet of 2 8

Project Number
10797.07

11/24/10

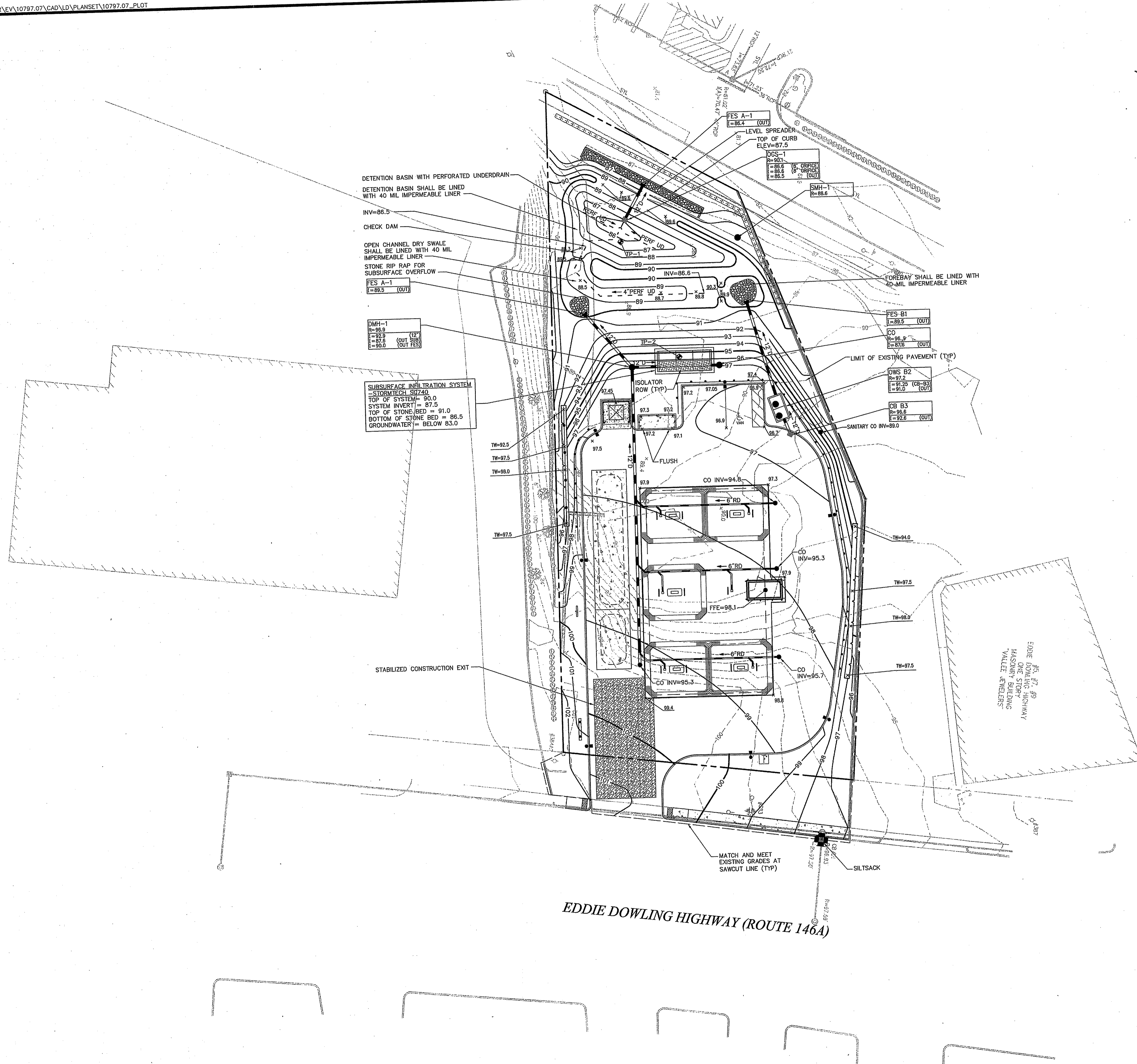
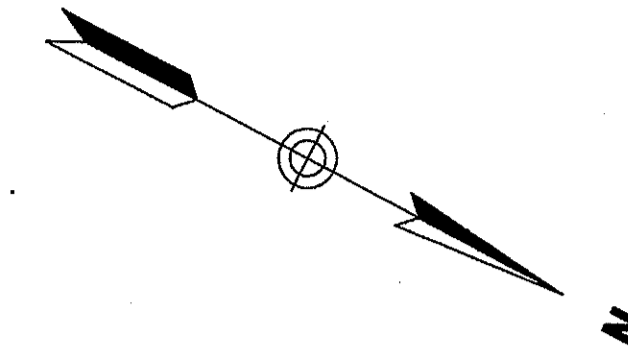




Vanasse Hangen Brustlin, Inc.

Transportation
Land Development
Environmental Services

101 Walnut Street, P.O. Box 9151
Watertown, Massachusetts 02471
617.924.1770 • FAX 617.924.2286



2	Response to DEM Comments	11/24/2010	CPN
1	Checklist Resubmission	8/13/2010	CPN
No.	Revision	Date	Appr.
Designed by DAG		Drawn by DAG	Checked by CPN
CAD checked by BKF		Approved by RPM	
Scale	1"=20'	Date	June 30, 2010
Project Title			

Proposed Fuel Facility

35 Eddie Dowling Highway
North Smithfield, Rhode Island

Issued for
Local Permitting

Not Approved for Construction

Drawing Title

DEPARTMENT OF ENVIRONMENTAL MANAGEMENT
OFFICE OF WATER RESOURCES
FRESHWATER WETLANDS PROGRAM
APPROVED WITH CONDITIONS
AS SPECIFIED IN THE LETTER OF APPROVAL
DATED DEC 13 2010 FILE # 10-0190
NO CHANGES ALLOWED WITHOUT PRIOR APPROVAL.
APPROVED PLANS MUST BE AT CONSTRUCTION SITE.

Conor P. Nagle

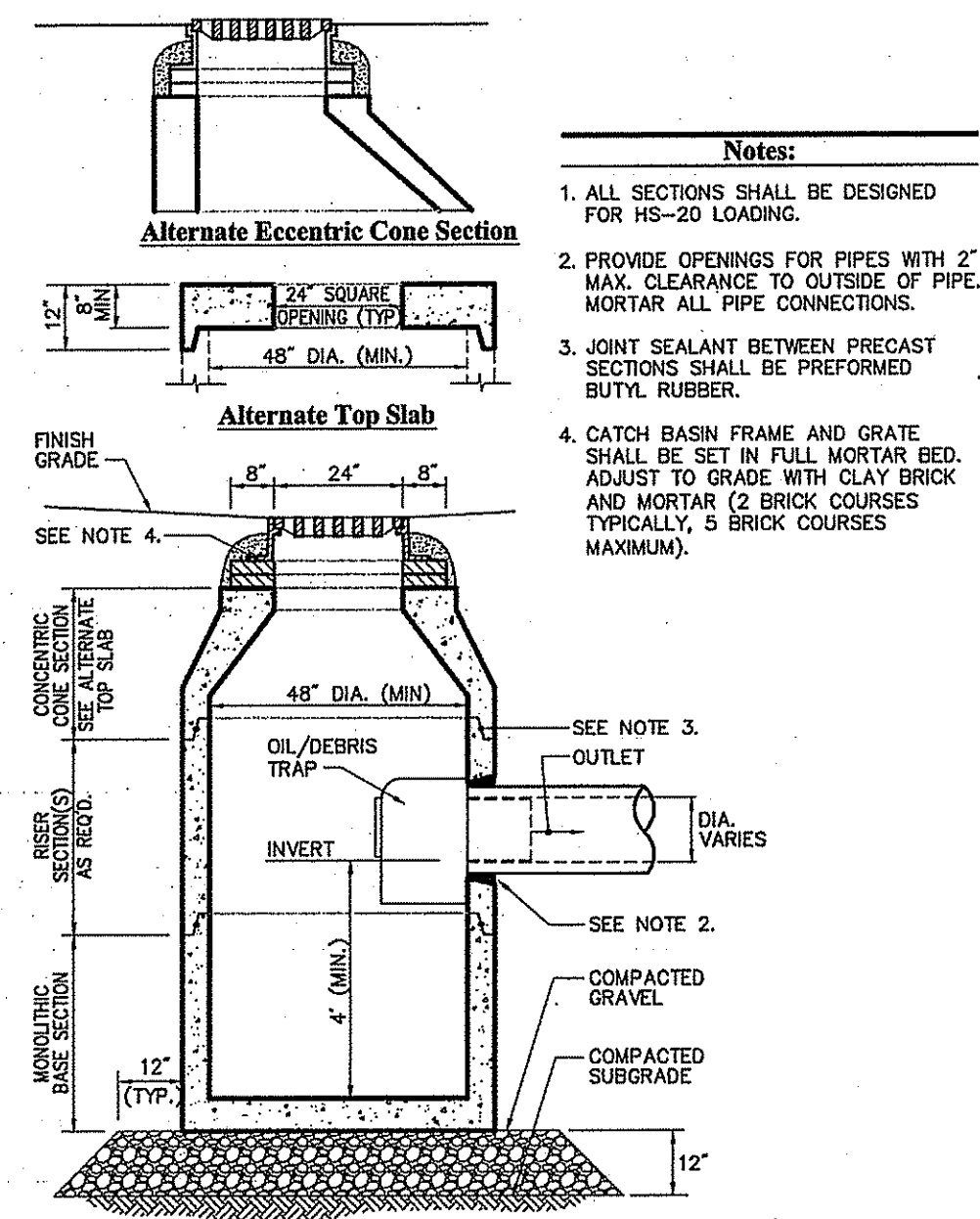


CONOR P. NAGLE
NOV 26 2010
REGISTERED PROFESSIONAL ENGINEER
CIVIL

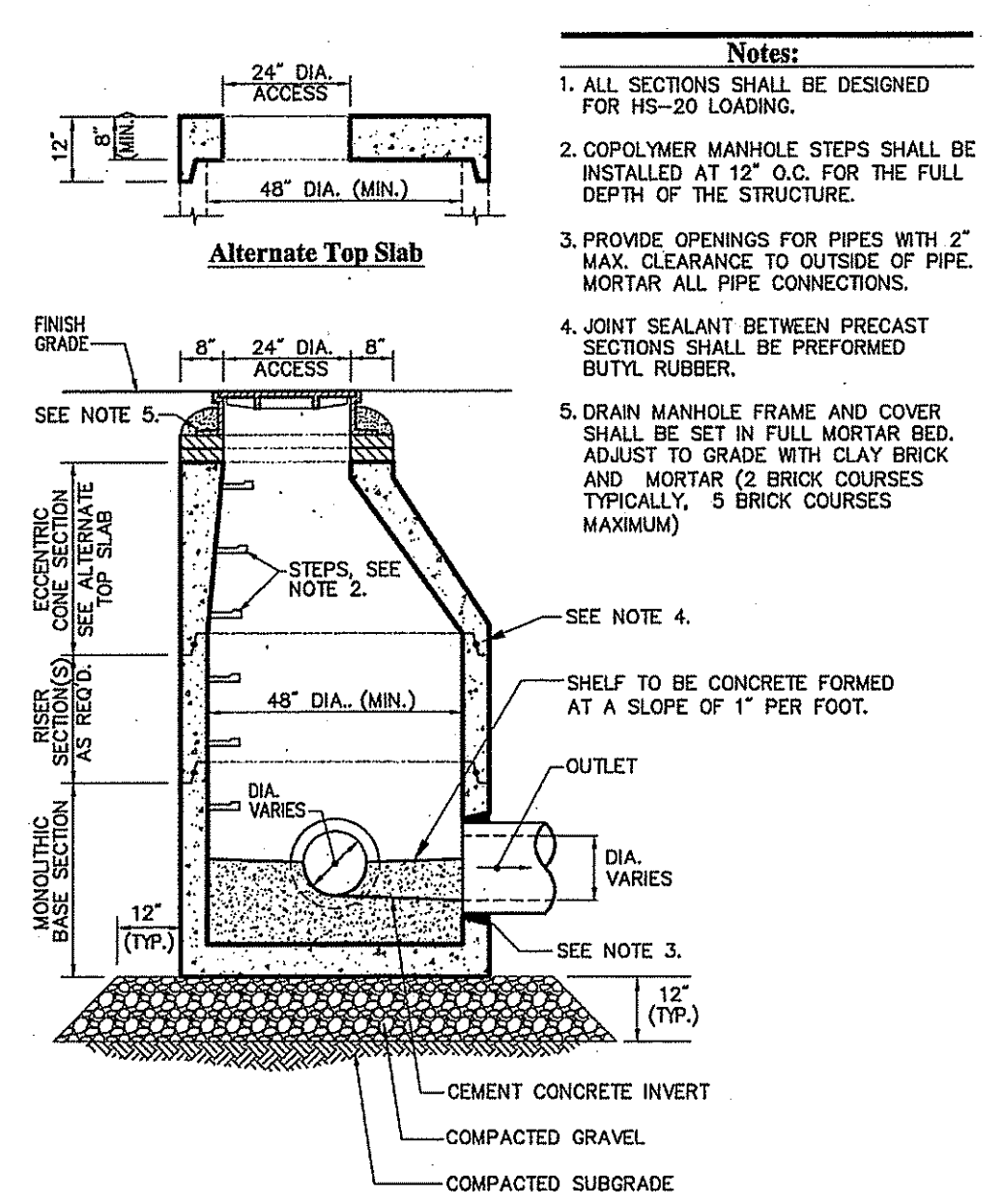
C-3

Sheet of 3 8
Project Number 10797.07

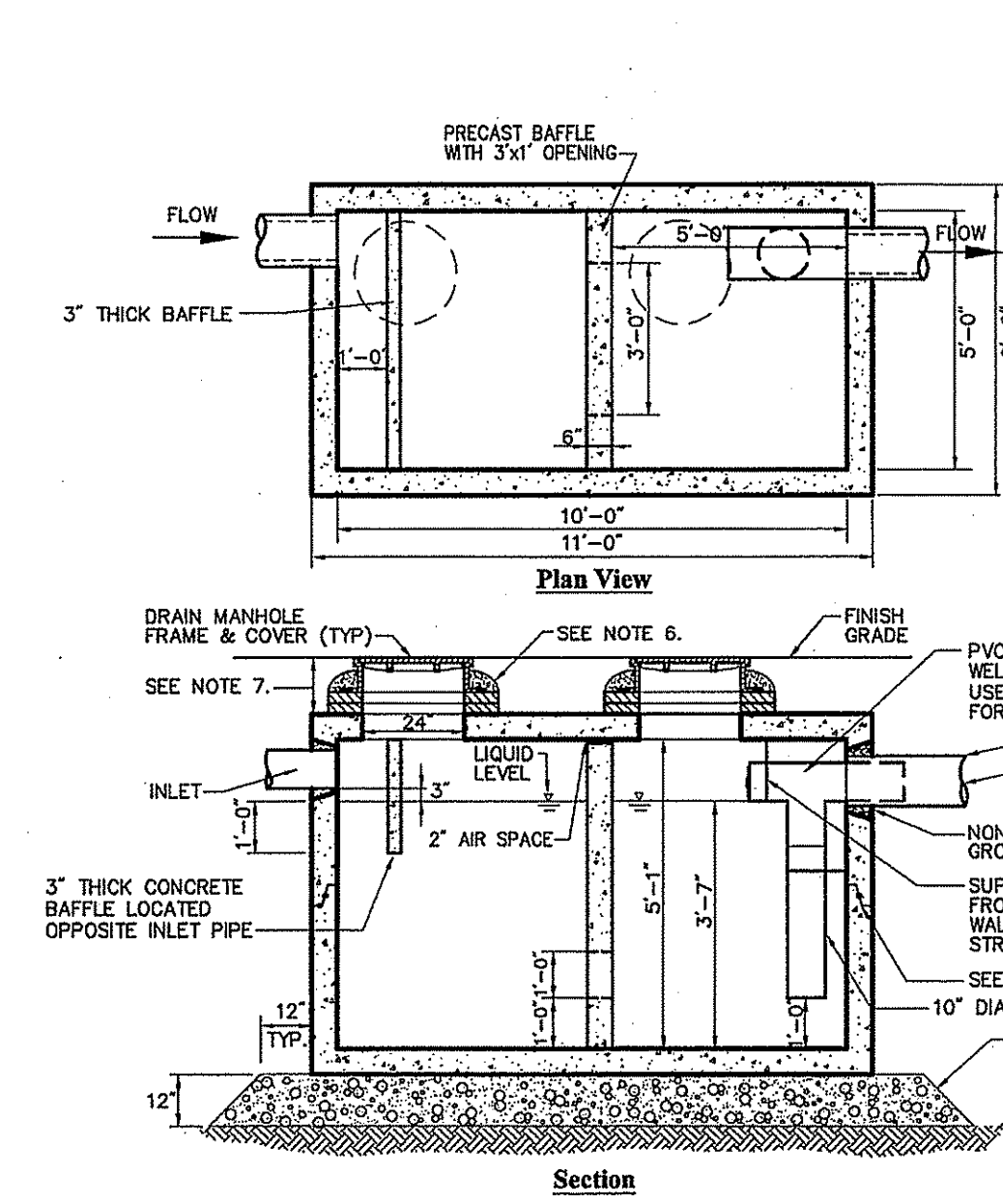
Saved Wednesday, November 24, 2010 10:49:11 AM DORCECCI Plotted Wednesday, November 24, 2010 10:52:22 AM Grecci, Dennis



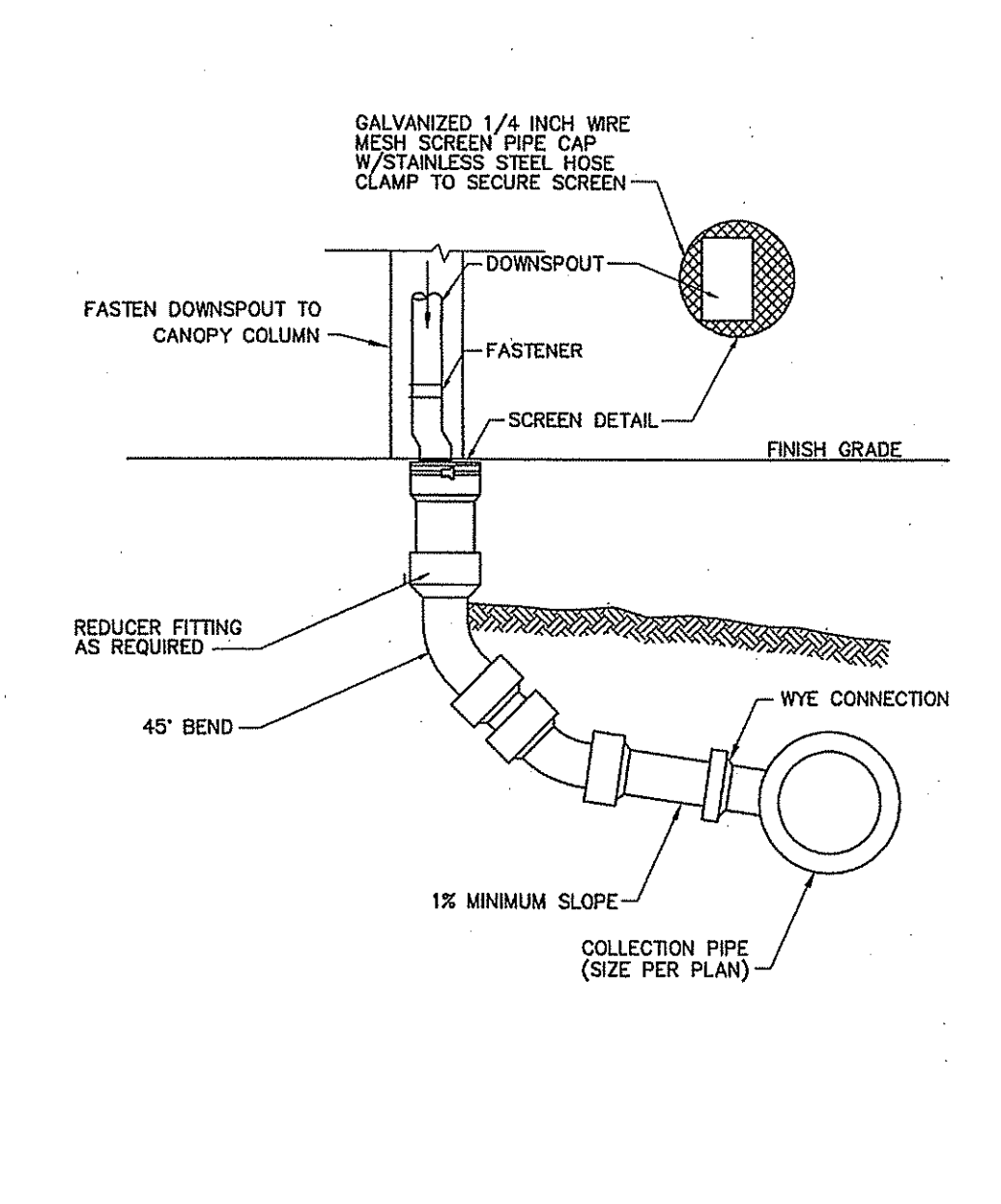
Catch Basin (CB) With Oil/Debris Trap 6/08
N.T.S. Source: VHB LD_101



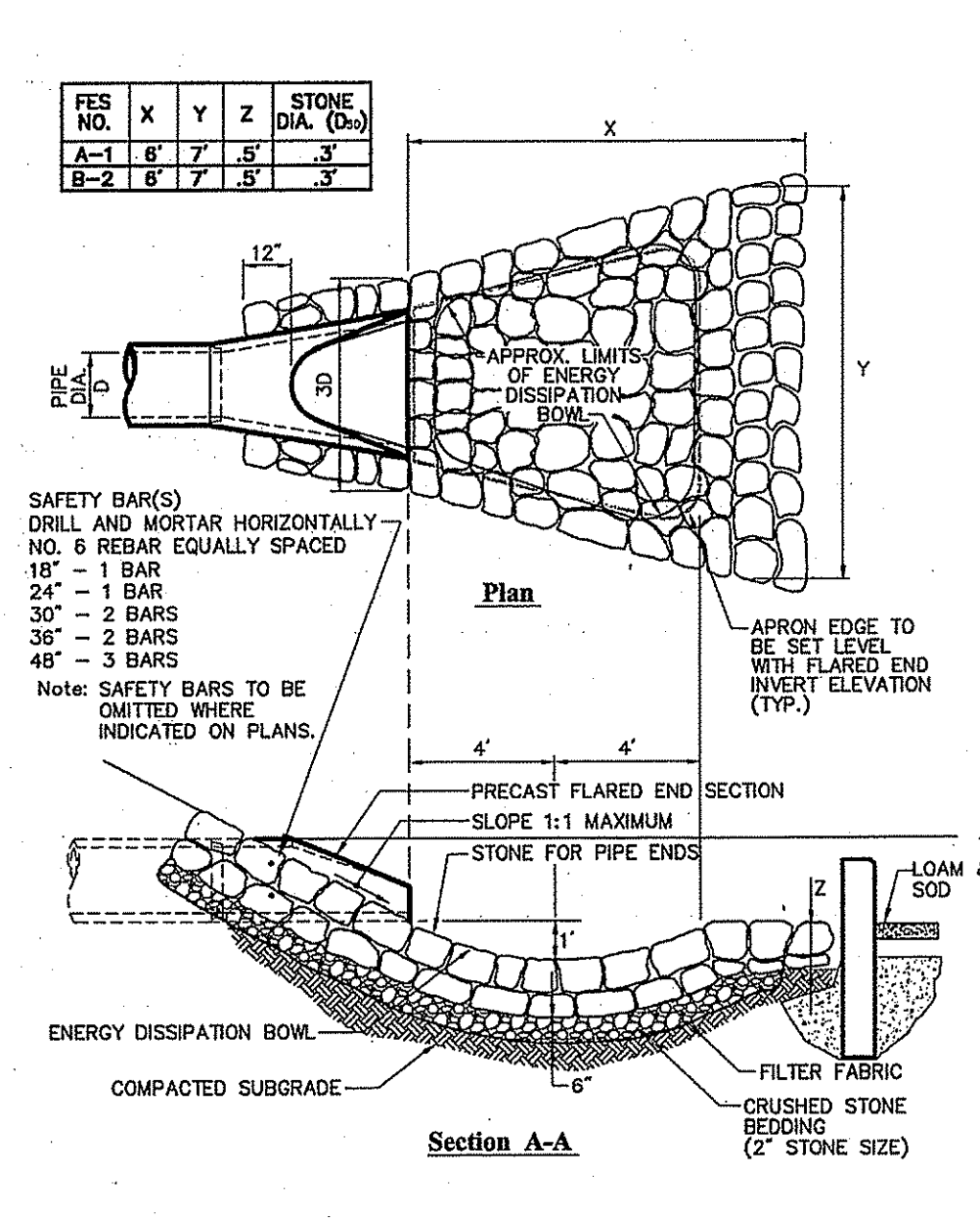
Drain Manhole (DMH) 6/08
N.T.S. Source: VHB LD_115



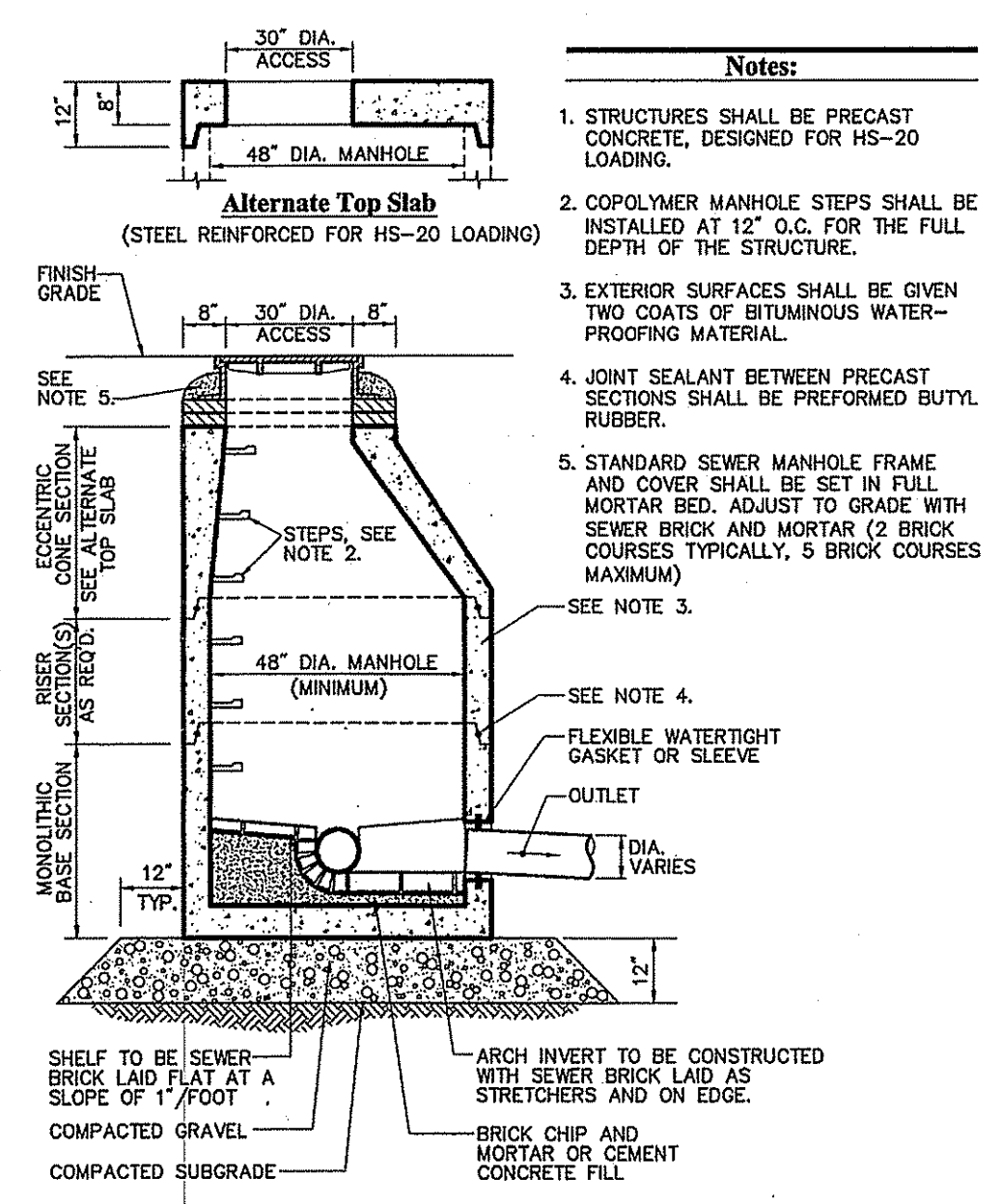
Oil/Water Separator 2/09
N.T.S. Source: VHB REV LD_144



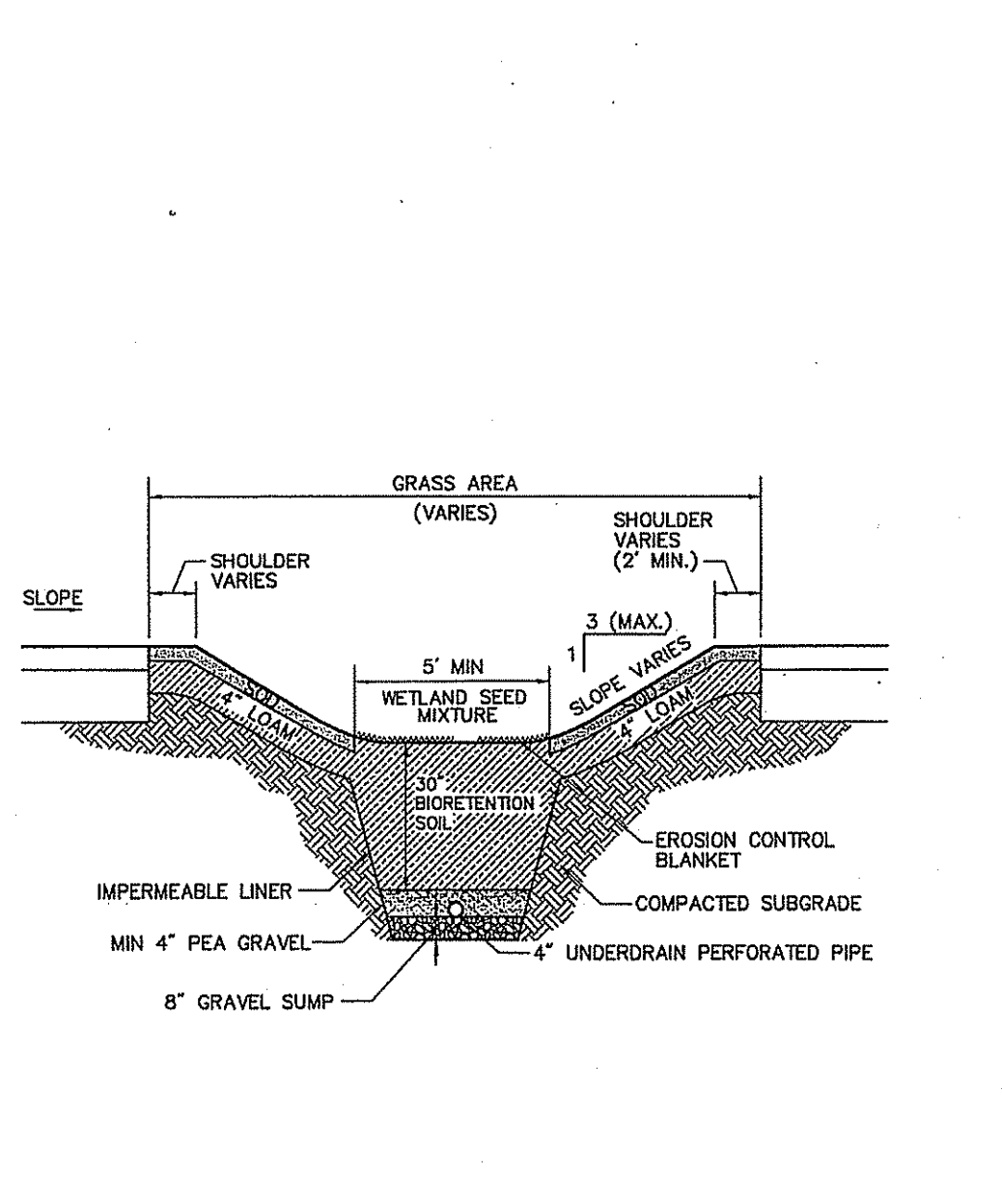
Downspout Rain Leader 12/08
N.T.S. Source: VHB LD_195



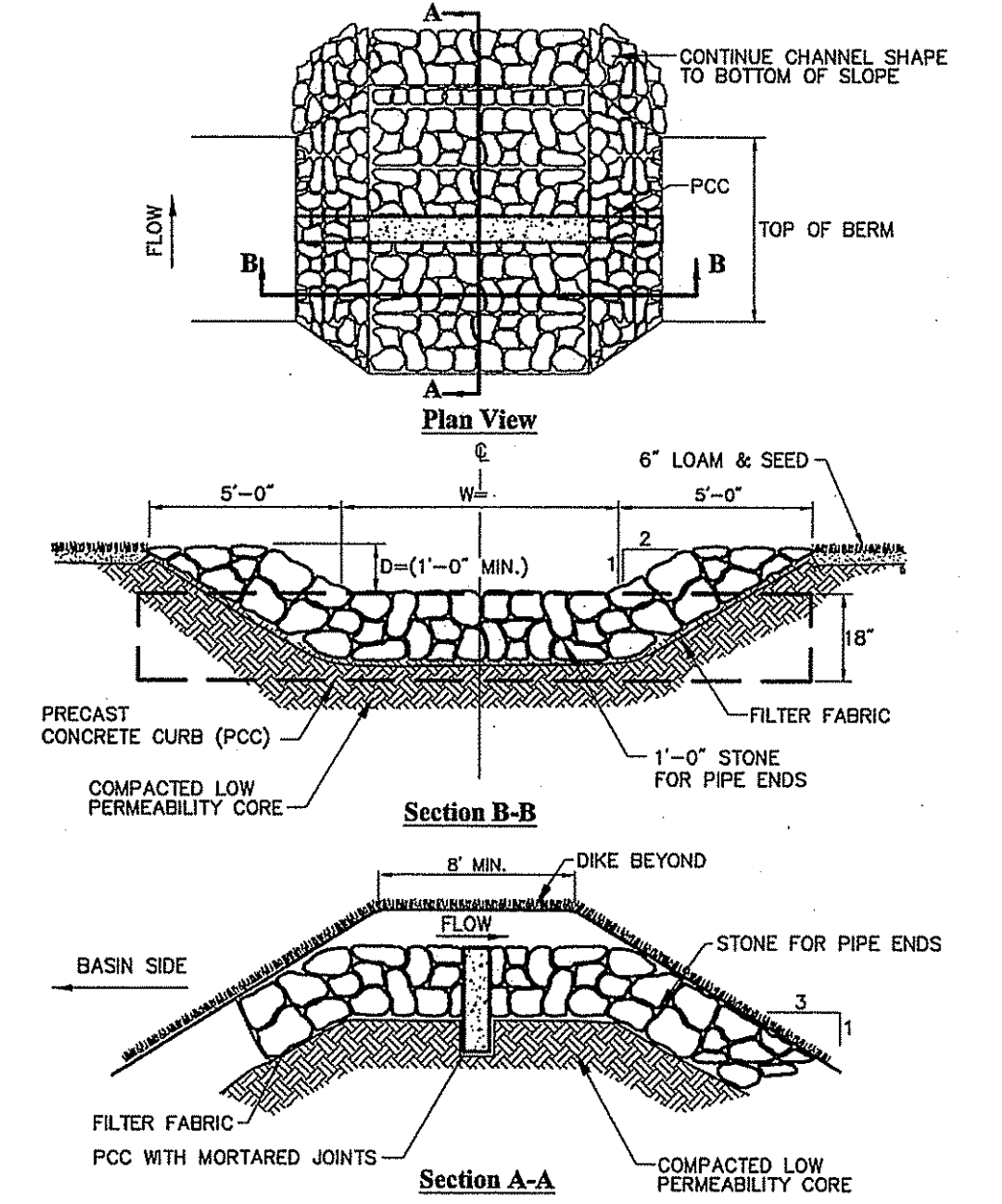
Flared End Section (FES) with Stone Protection 6/08
N.T.S. Source: VHB REV LD_134



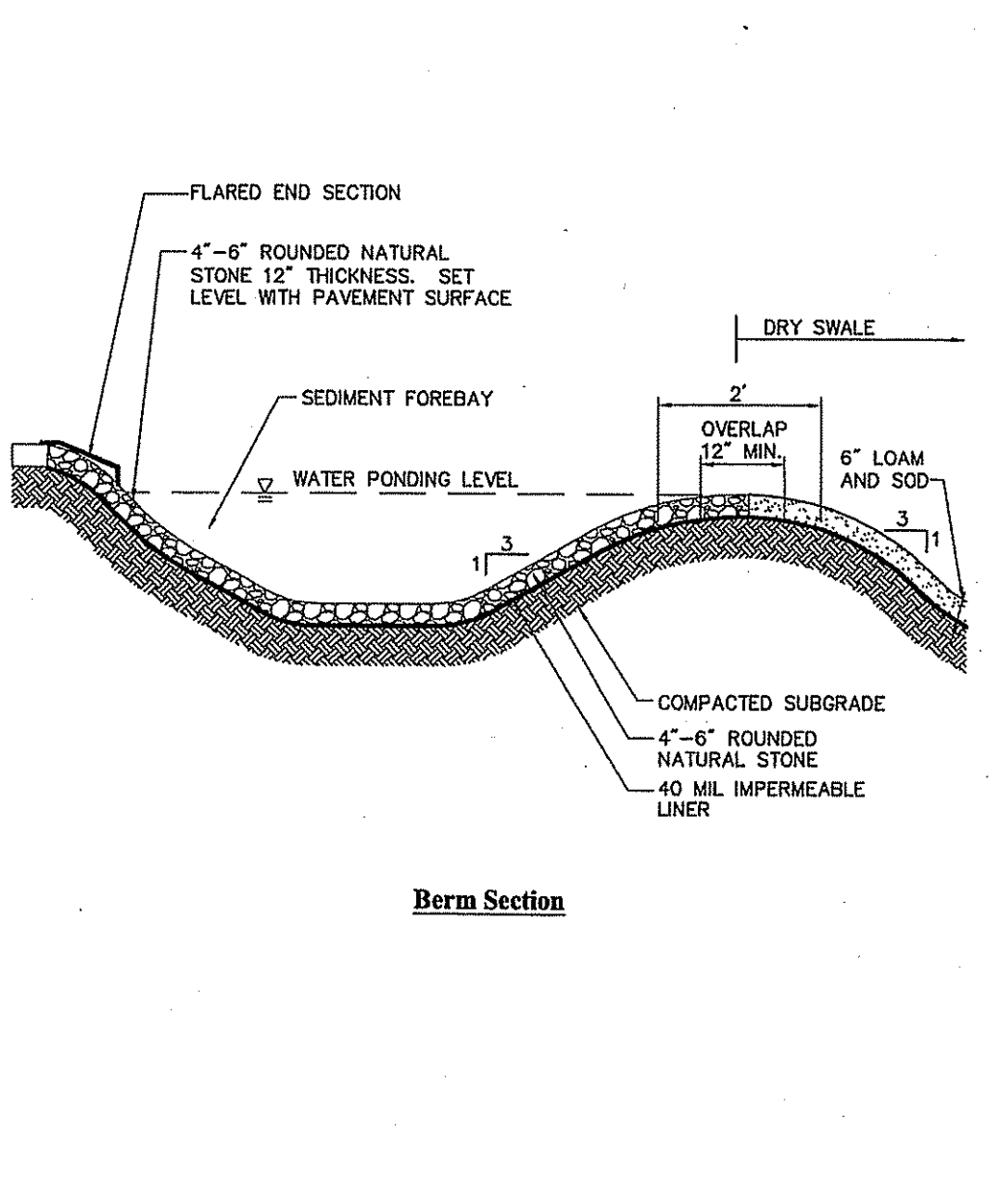
Sanitary Sewer Manhole (SMH) 6/08
N.T.S. Source: VHB LD_200



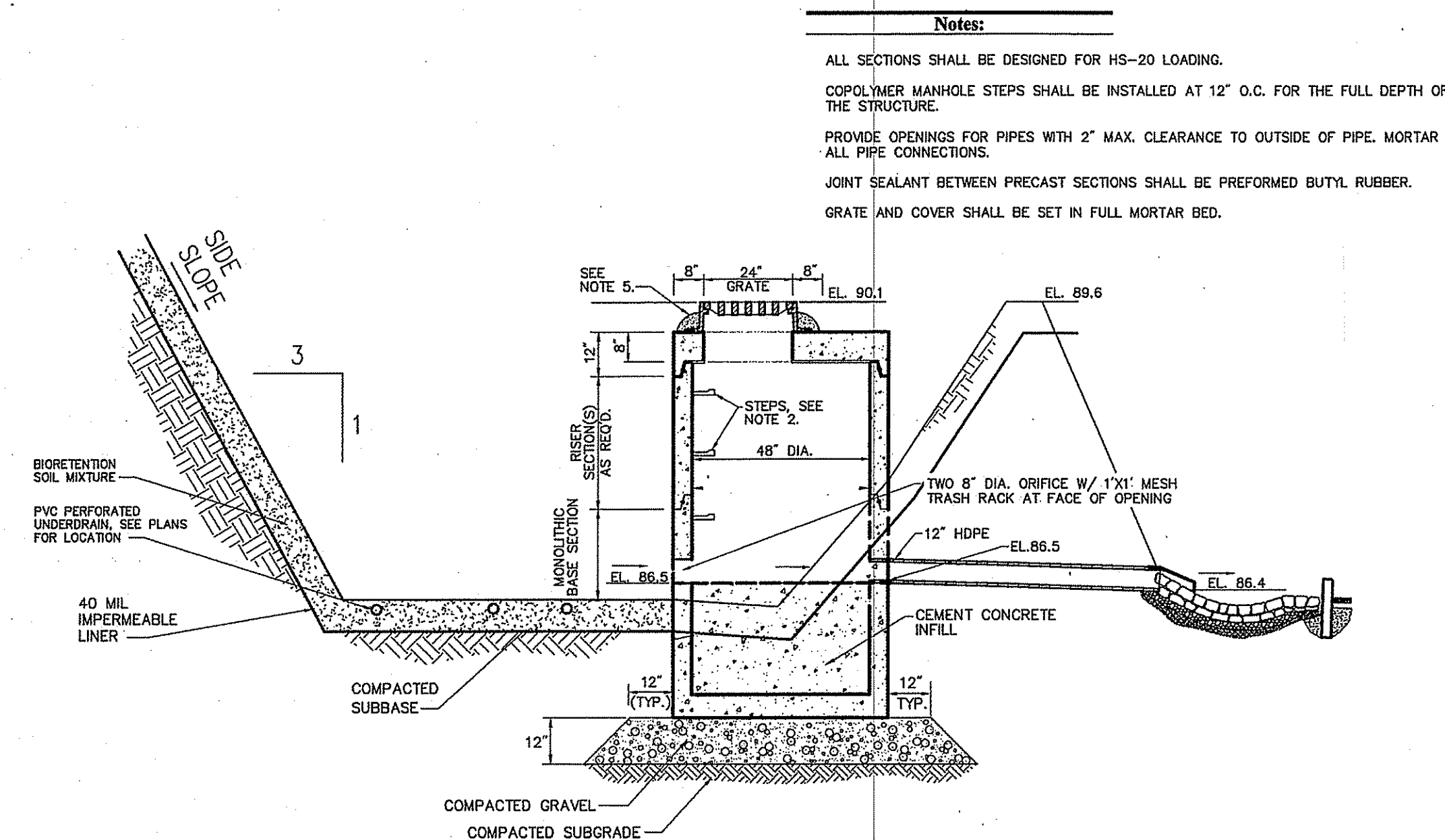
Dry Swale 6/08
N.T.S. Source: VHB REV LD_354



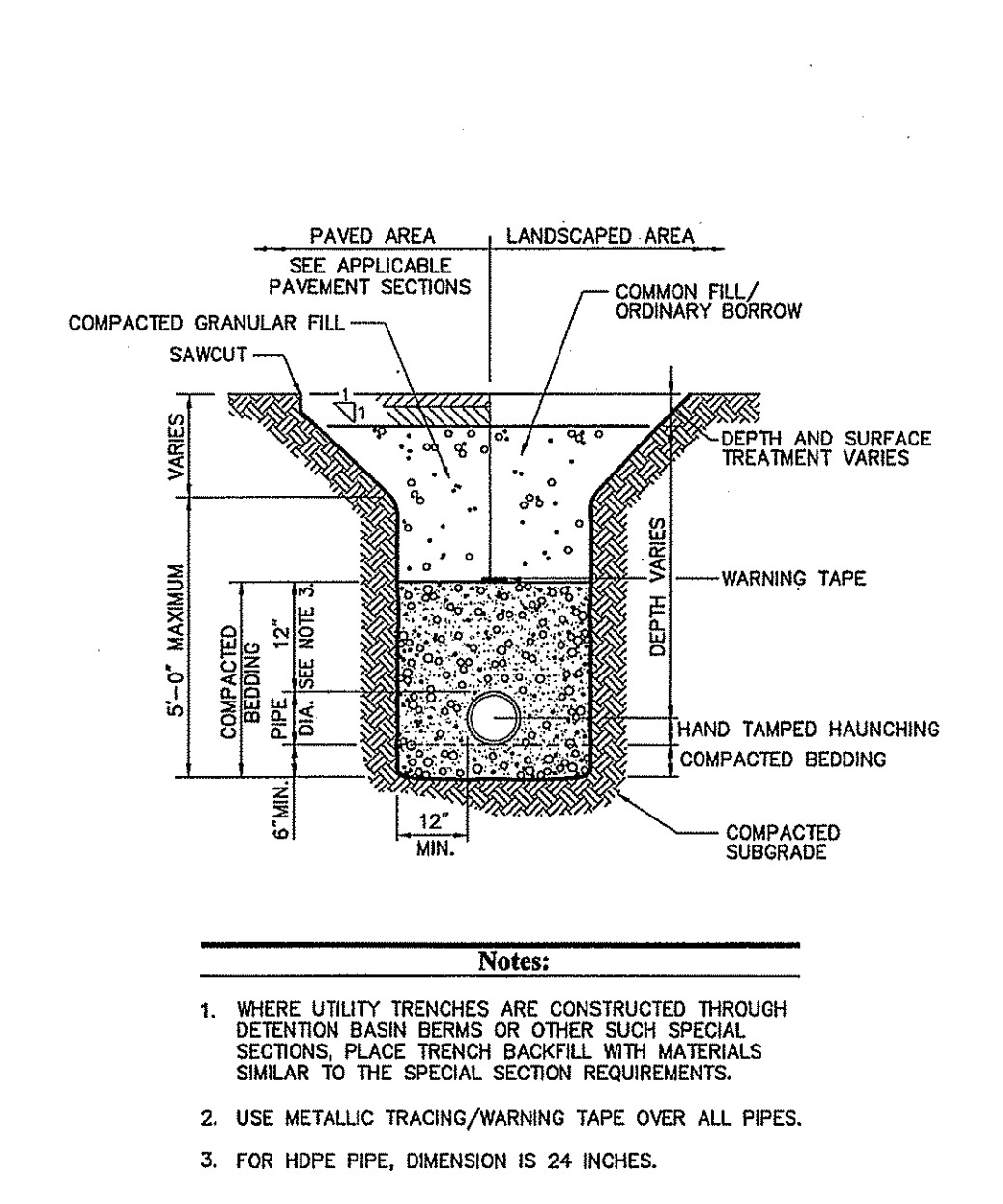
Level Spreader Detail 6/08
N.T.S. Source: VHB REV LD_161



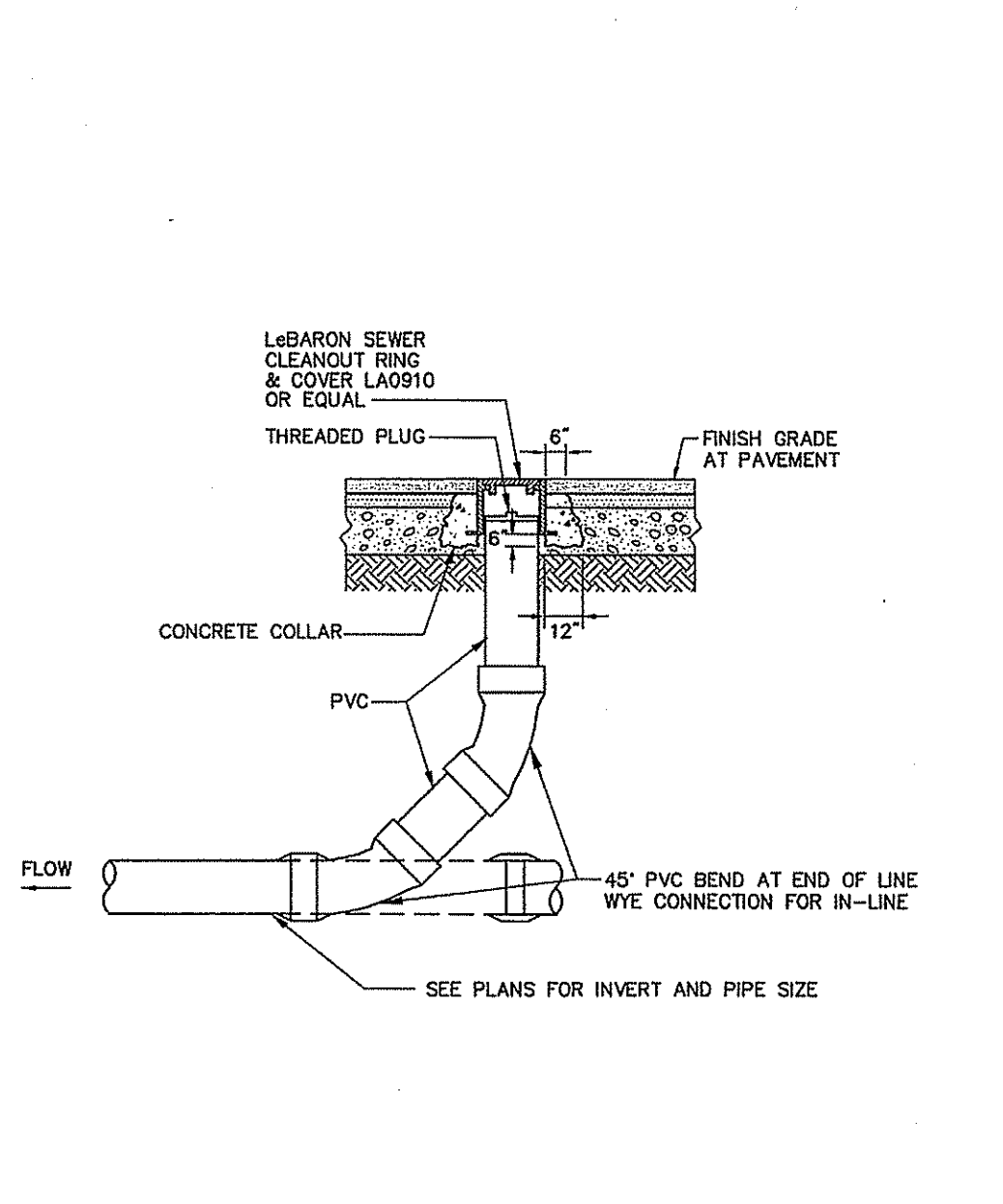
Low Flow Sediment Forebay Berm 6/08
N.T.S. Source: VHB LD_165



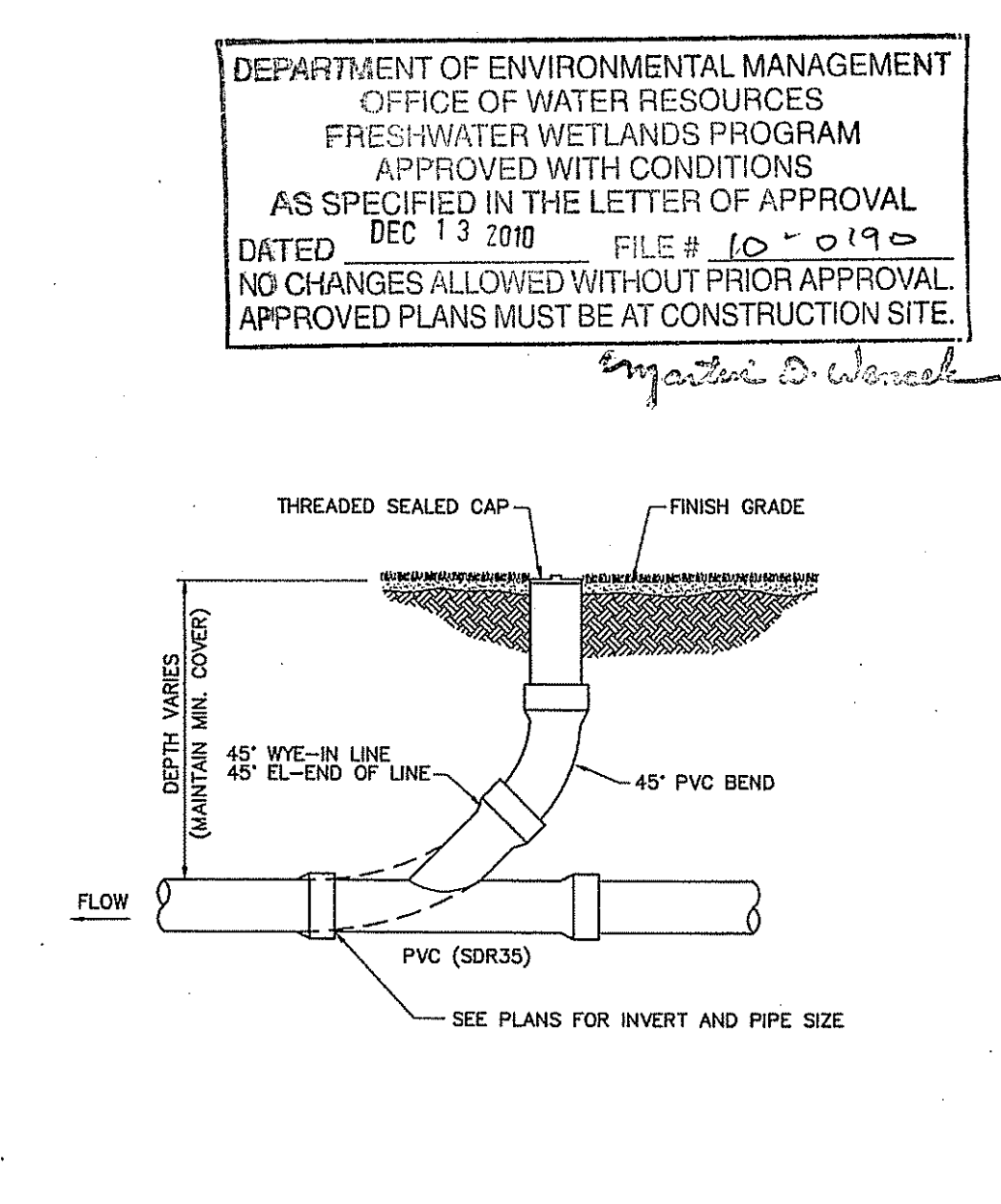
Outlet Control Structure (OCS) / Basin Cross Section 2/09
N.T.S. Source: VHB REV LD_116 Mod



Utility Trench 6/08
N.T.S. Source: VHB LD_300



Cleanout - Paved Area 6/08
N.T.S. Source: VHB LD_303



Cleanout - Landscape Area 6/08
N.T.S. Source: VHB LD_302

VHB
Vanasse Hangen Brustlin, Inc.
Transportation
Land Development
Environmental Services
101 Walnut Street, P.O. Box 9151
Watertown, Massachusetts 02471
617.924.1770 • FAX 617.924.2286

2	Response to DEM Comments	11/24/2010	CPN
1	Checklist Resubmission	8/13/2010	CPN
No.	Revision	Date	Appd.
Designed by DAG		Drawn by DAG	Checked by CPN
CAD checked by BKF		Approved by RPM	
Scale As Noted		Date June 30, 2010	

Proposed Fuel Facility
35 Eddie Dowling Highway
North Smithfield, Rhode Island
Issued for
Local Permitting

Not Approved for Construction
Drawing Title
Site Details
NOV 26 2010

CONOR P. NAGLE
No. 6405
REGISTERED
PROFESSIONAL ENGINEER
CIVIL
11/24/10
C-5
Sheet 5 of 8
Project Number 10797.07
10797.07.DT.DWG

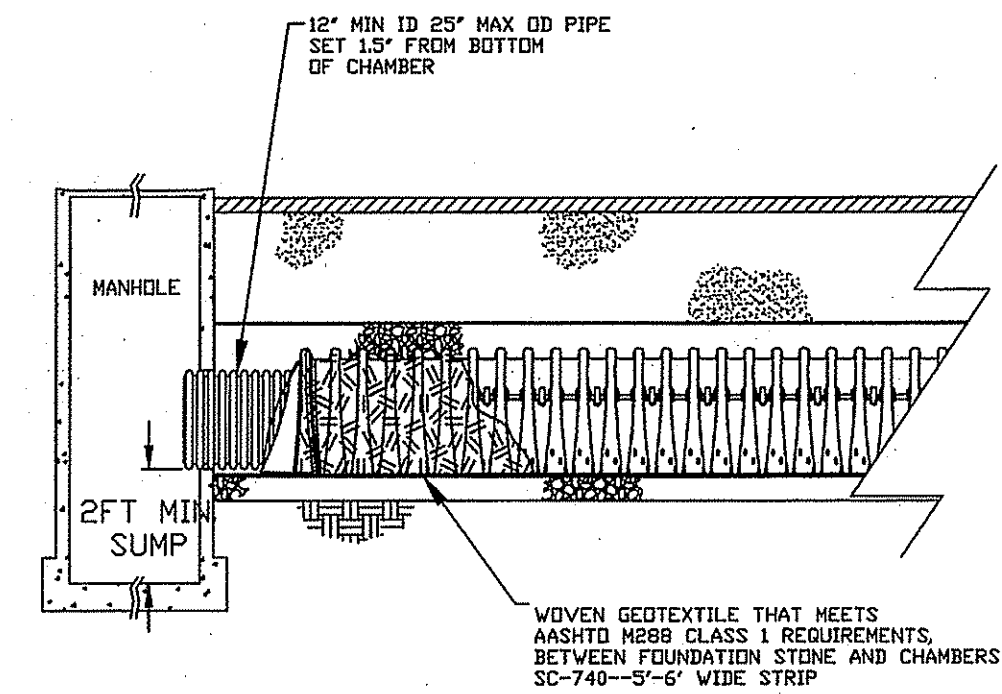
Saved Wednesday, November 24, 2010 10:49:11 AM DORISCI Plotted Wednesday, November 24, 2010 10:52:24 AM Grieco, Dennis



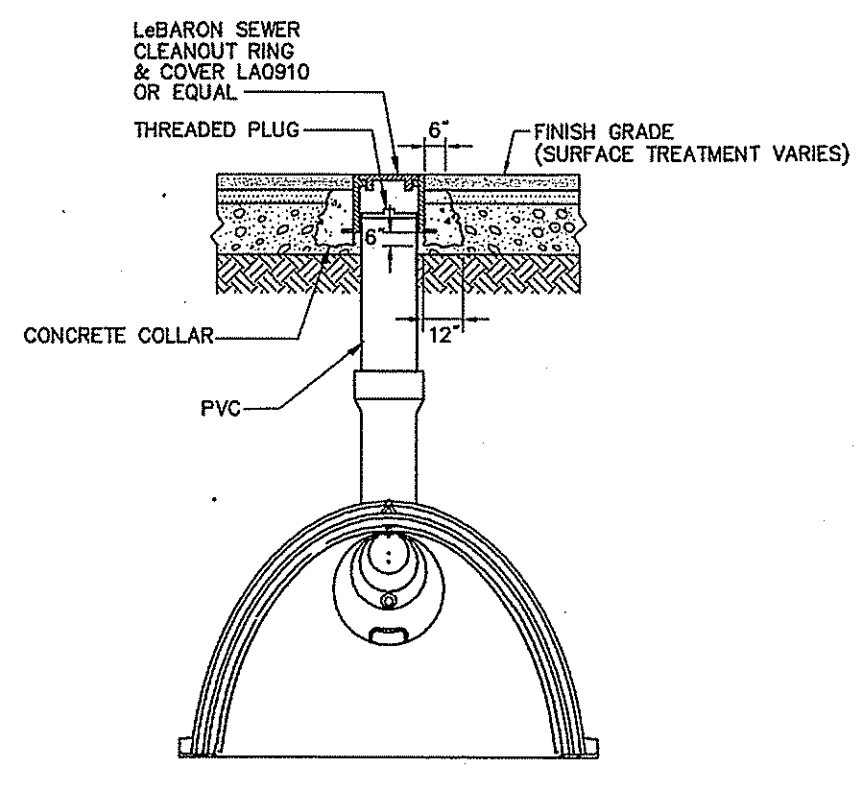
Vanasse Hangen Brustlin, Inc.

Transportation
Land Development
Environmental Services

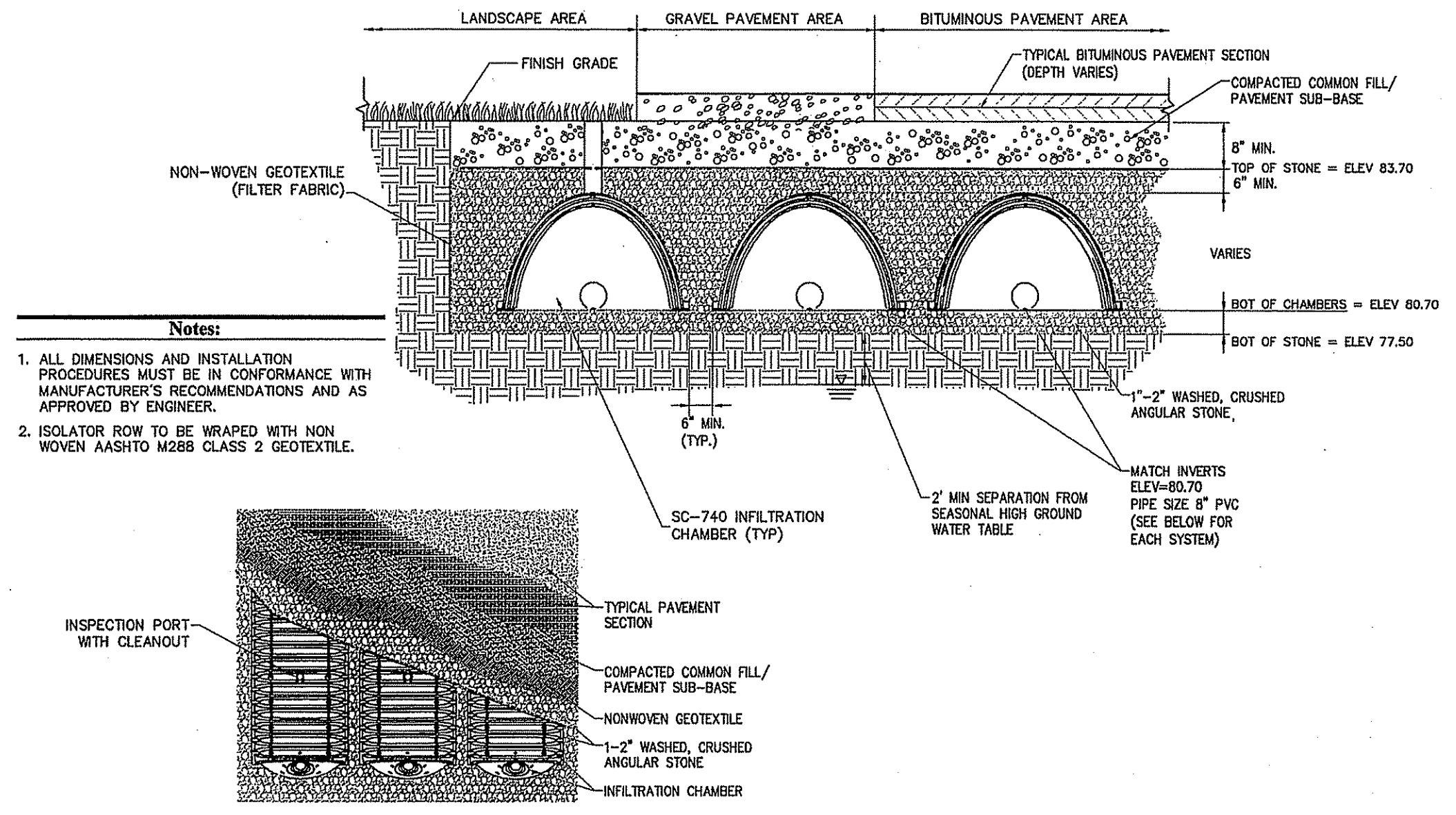
101 Walnut Street, P.O. Box 9151
Watertown, Massachusetts 02471
617.924.1770 • FAX 617.924.2286



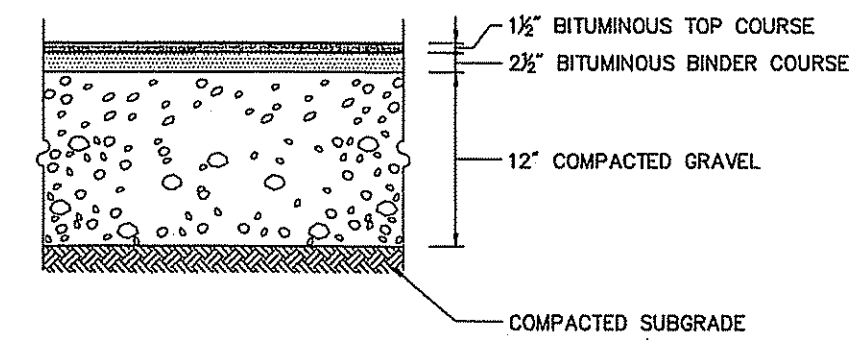
Subsurface Infiltration Isolator Row 6/05
N.T.S. Source: Stormtech LD_303



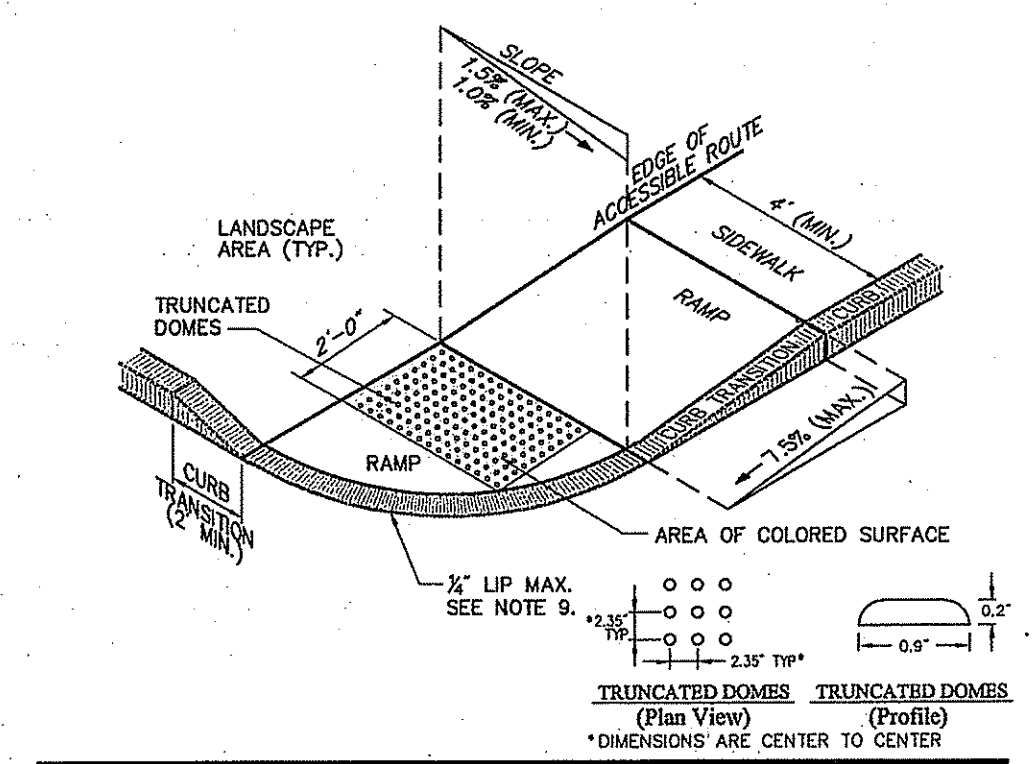
Infiltration System Inspection Port 6/05
N.T.S. Source: Stormtech LD_303



Subsurface Infiltration System (Recharge Chambers) 6/03
N.T.S. Source: Stormtech

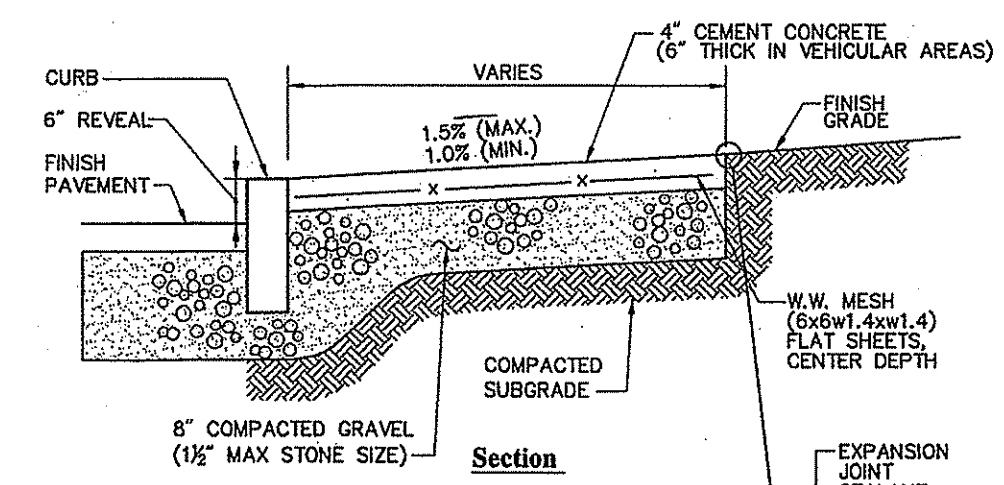


Bituminous Concrete Pavement Sections 6/08
N.T.S. Source: VHB REV LD_430



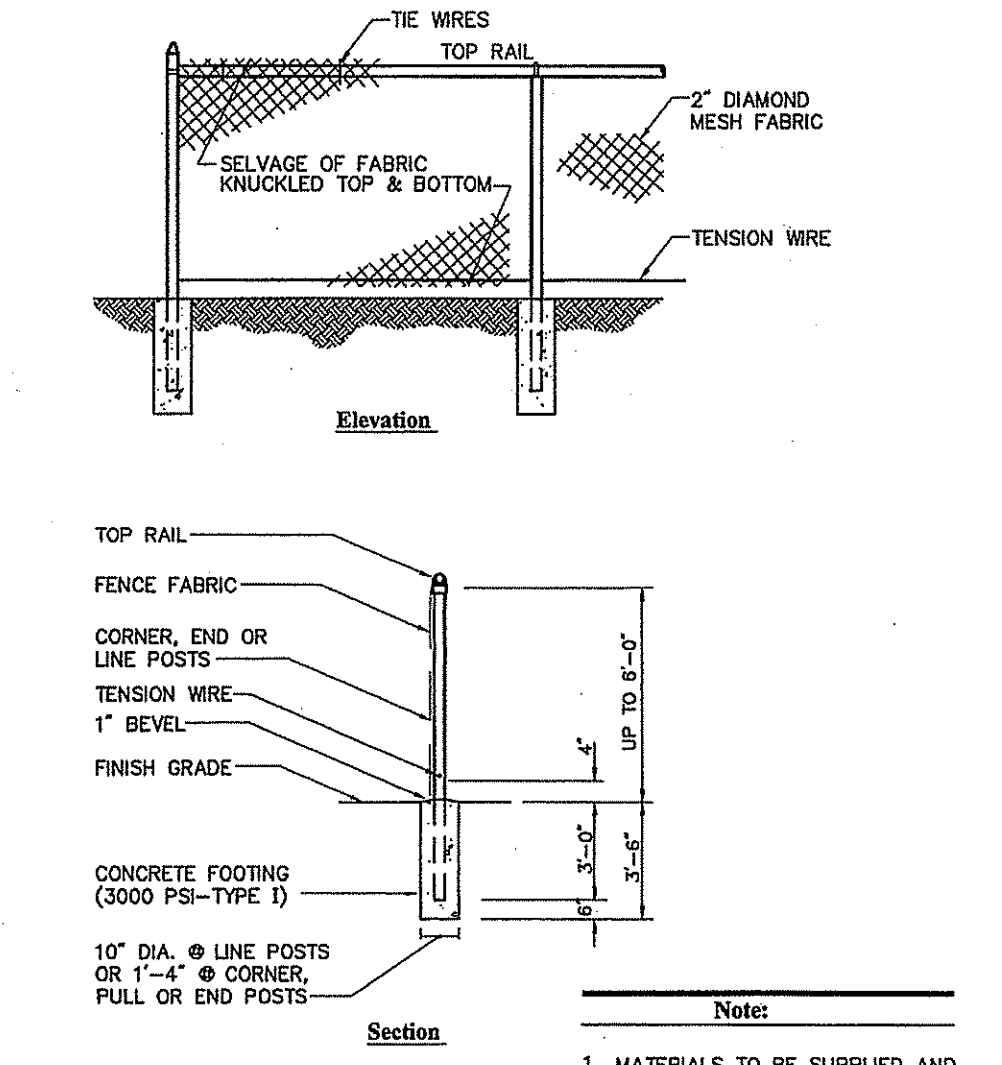
- Notes:**
1. THE MAXIMUM ALLOWABLE SIDEWALK AND CURB RAMP CROSS SLOPES SHALL BE 1.5 (1% MIN.).
 2. THE MAXIMUM ALLOWABLE SLOPE OF ACCESSIBLE ROUTE EXCLUDING CURB RAMPS SHALL BE 5%.
 3. THE MAXIMUM ALLOWABLE SLOPE OF ACCESSIBLE ROUTE CURB RAMPS SHALL BE 7.5%.
 4. A MINIMUM OF 3 FEET CLEAR SHALL BE MAINTAINED AT ANY PERMANENT OBSTACLE IN ACCESSIBLE ROUTE (I.E., HYDRANTS, UTILITY POLES, TREE WELLS, SIGNS, ETC.).
 5. CURB TREATMENT VARIES. SEE PLANS FOR CURB TYPE.
 6. RAMP, CURB AND ADJACENT PAVEMENTS SHALL BE GRADED TO PREVENT PONDING.
 7. SEE TYPICAL SIDEWALK SECTION FOR RAMP CONSTRUCTION.
 8. WHERE ACCESSIBLE ROUTES ARE LESS THAN 5' IN WIDTH (EXCLUDING CURBING) A 5' x 5' PASSING AREA SHALL BE PROVIDED AT INTERVALS NOT TO EXCEED 200 FEET.
 9. ELIMINATE CURBING AT RAMP WHERE IT ABUTS ROADWAY, EXCEPT WHERE VERTICAL CURBING IS INDICATED ON THE DRAWINGS TO BE INSTALLED AND SET FLUSH.
 10. DETECTABLE WARNINGS SHALL CONTRAST VISUALLY WITH ADJOINING SURFACES.
 11. DETECTABLE WARNINGS SHALL BE INSTALLED PERPENDICULAR TO THE ACCESSIBLE ROUTE.
 12. CONTRACTOR TO SUBMIT R.F.I. FOR THIS TYPE OF ACCESSIBLE CURB RAMP FOR APEX ROADWAY CROSSINGS.

Accessible Curb Ramp (ACR) - Type 'B-P' 6/09
N.T.S. Source: VHB LD_401

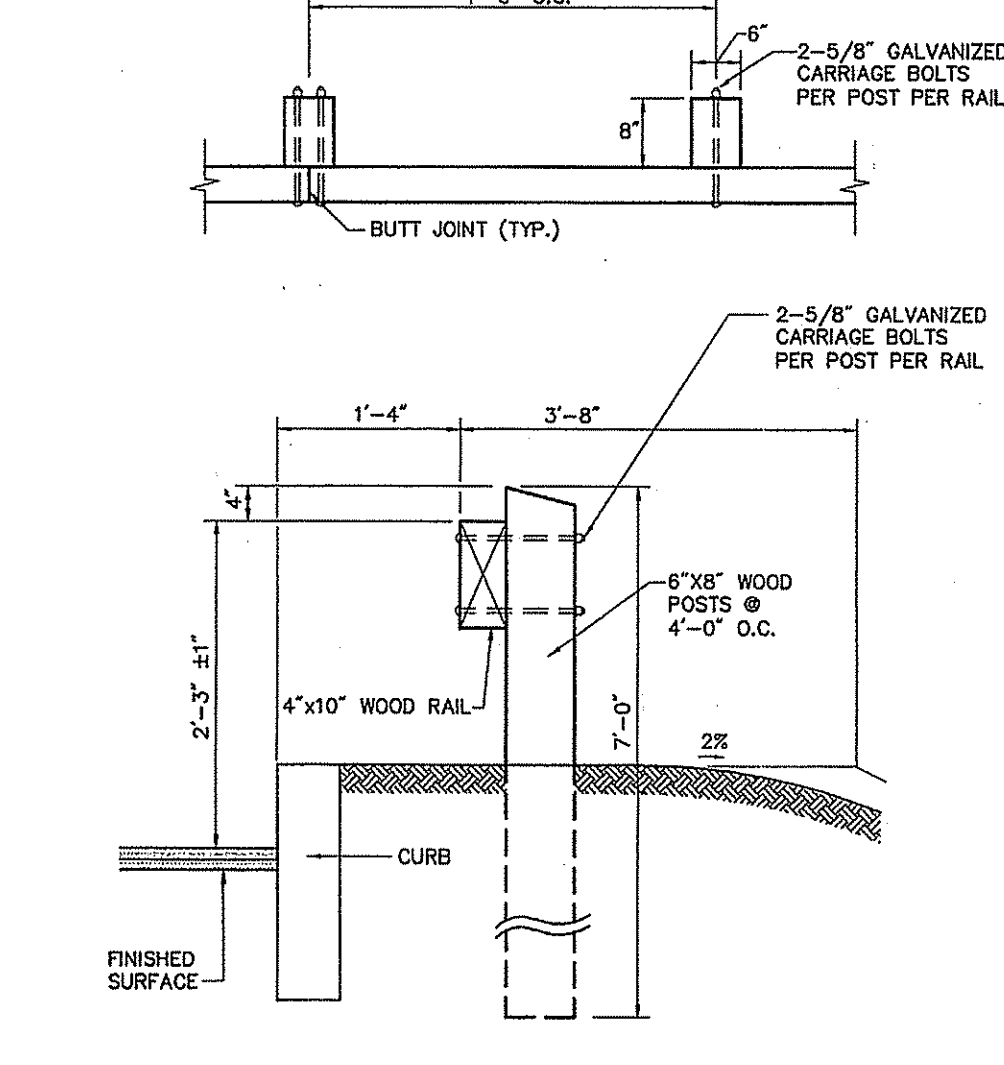


- Notes:**
1. PROVIDE EXPANSION JOINTS AT MIN. 30 FT. O.C. WITH PRE-FORMED JOINT FILLER.
 2. PROVIDE TOOLED CONTROL JOINTS AT 6' O.C.
 3. PROVIDE BROOM FINISH IN DIRECTION PERPENDICULAR TO CURB.
 4. CEMENT CONCRETE SHALL BE 4000 PSI-TYPE II

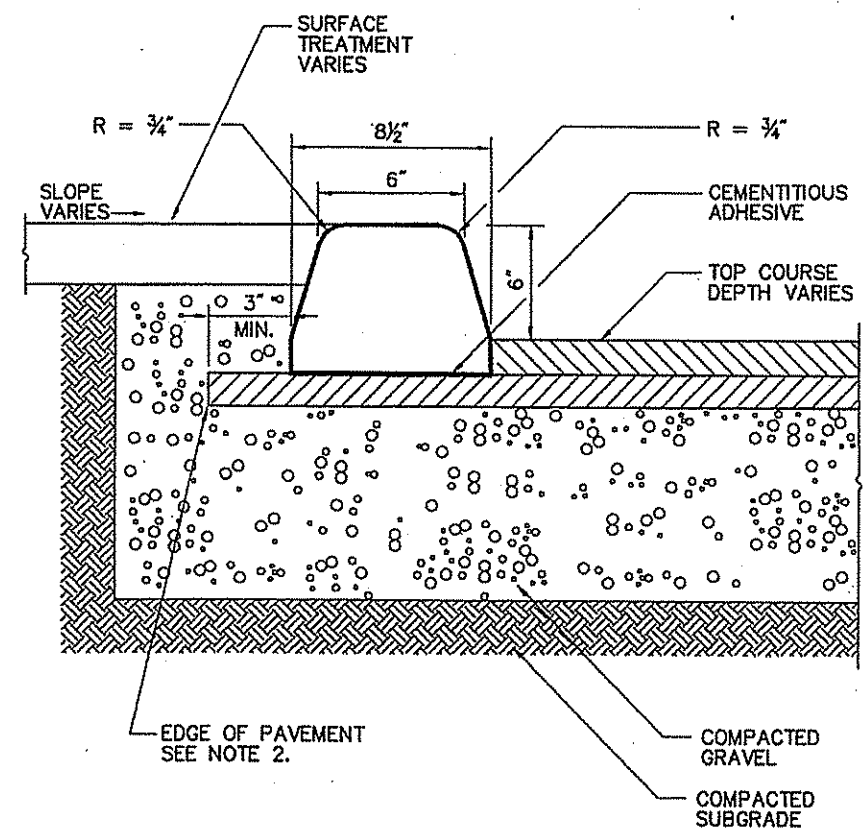
Concrete Sidewalk 6/08
N.T.S. Source: VHB LD_420



Chain Link Fence up to 6' 6/08
N.T.S. Source: VHB LD_481

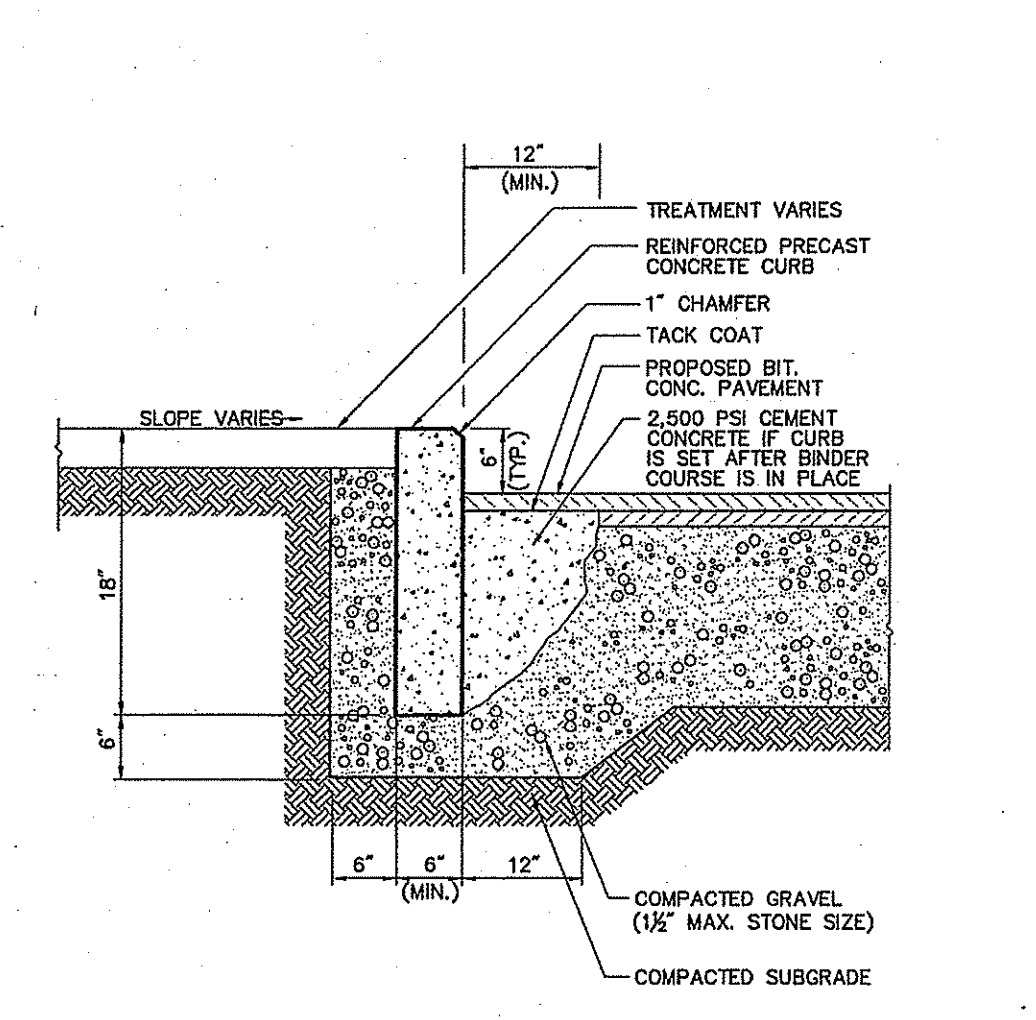


Wood Guardrail 6/08
N.T.S. Source: VHB LD_480

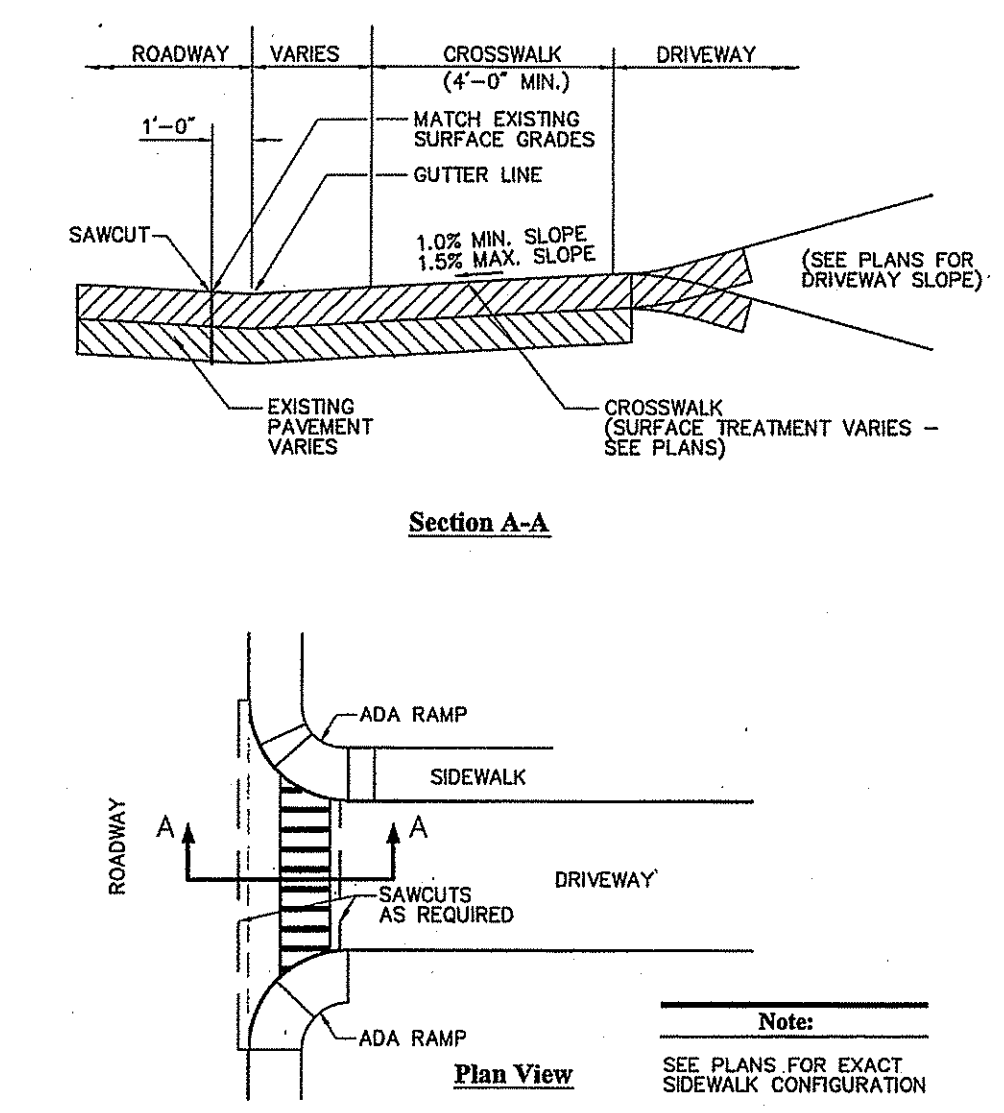


- Notes:**
1. ECC REFERS TO EXTRUDED CONCRETE CURB WHICH IS CAST-IN-PLACE IN THE FIELD.
 2. WHEN ECC IS USED, CONTRACTOR IS TO DETERMINE THE EXTENDED LAYOUT DIMENSIONS OF THE BASE COURSE IN ORDER TO ACCOMMODATE PLACEMENT OF THE ECC.

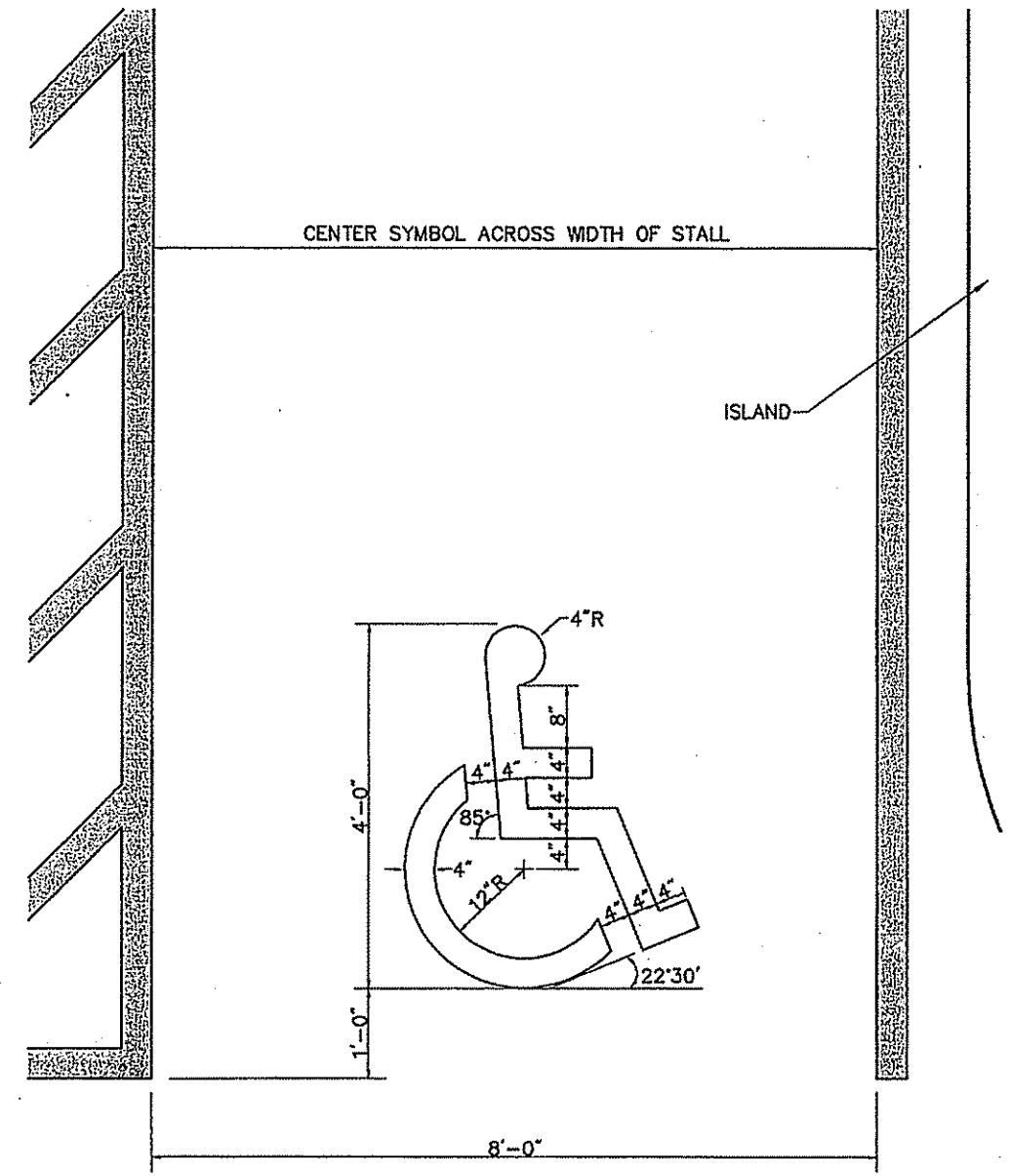
Extruded Concrete Curb (ECC) 6/08
N.T.S. Source: VHB LD_480



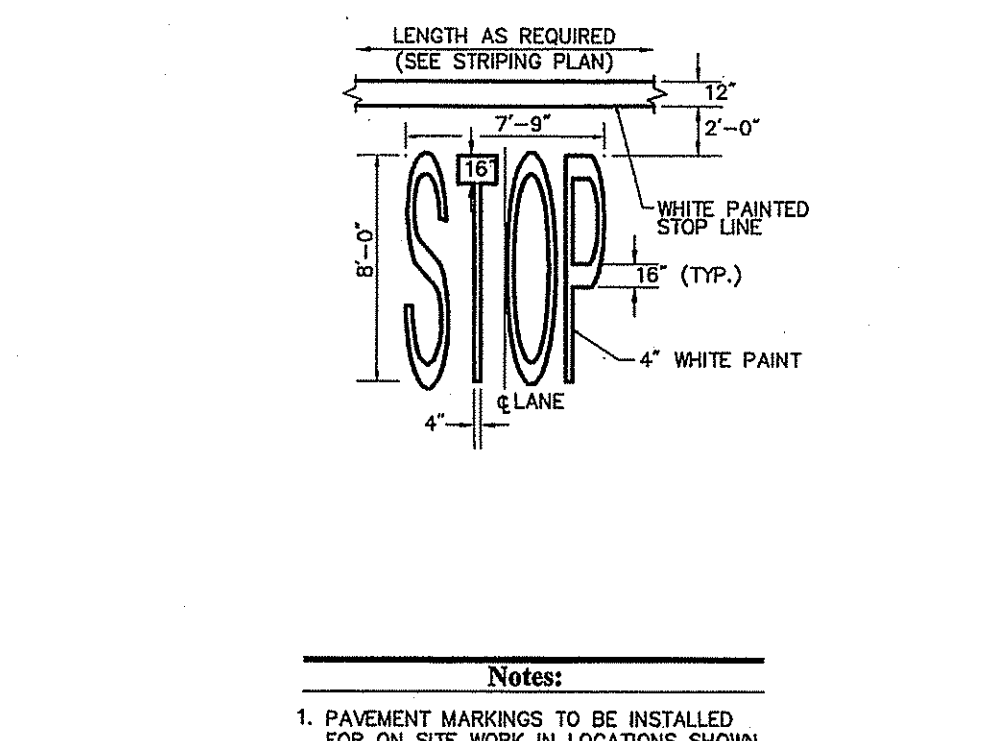
Precast Concrete Curb (PCC) 6/08
N.T.S. Source: VHB REV LD_404s



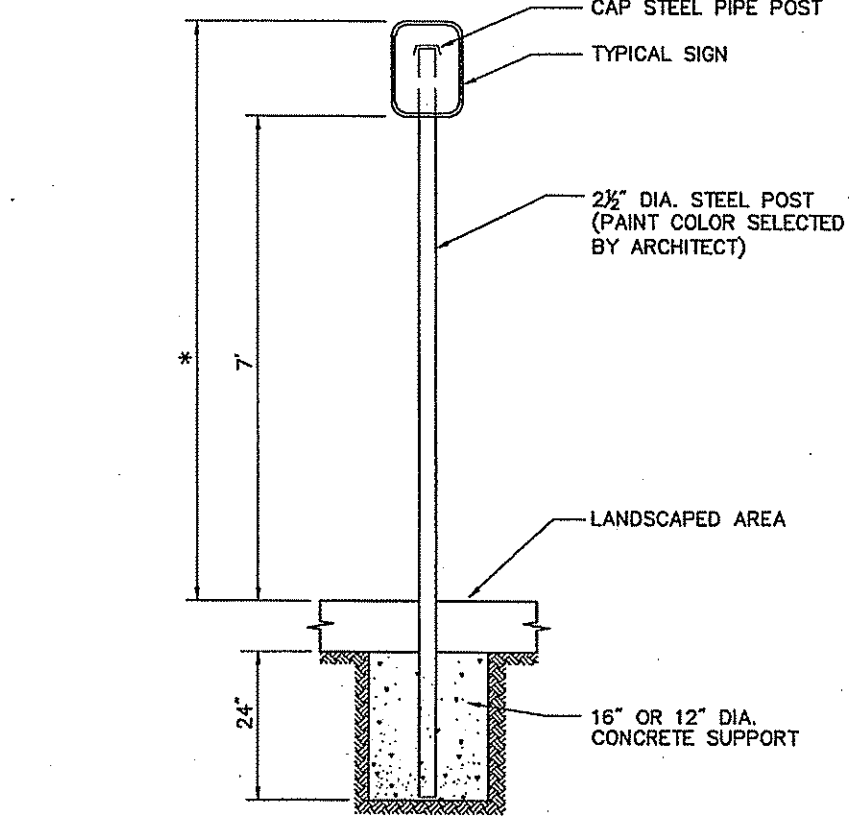
Driveway Entrance/Crosswalk Section Detail 6/08
N.T.S. Source: VHB LD_423



Accessible Parking Space Symbol 6/08
N.T.S. Source: VHB LD_552s



Painted Pavement Markings - On Site 6/08
N.T.S. Source: VHB REV LD_554



Sign Post - Type 'A' 6/08
N.T.S. Source: VHB LD_701

DEPARTMENT OF ENVIRONMENTAL MANAGEMENT
OFFICE OF WATER RESOURCES
FRESHWATER WETLANDS PROGRAM
APPROVED WITH CONDITIONS
AS SPECIFIED IN THE LETTER OF APPROVAL
DATED DEC 13 2010 FILE # 10-0190
NO CHANGES ALLOWED WITHOUT PRIOR APPROVAL.
APPROVED PLANS MUST BE AT CONSTRUCTION SITE.

No.	Revision	Date	Appr.
1	Response to DEM Comments	11/24/2010	CPN

Designed by DAG Drawn by DAG Checked by CPN
CAD checked by CPN Approved by RPM
Scale As Noted Date June 30, 2010
Project Title

Proposed Fuel Facility

35 Eddie Dowling Highway
North Smithfield, Rhode Island

Local Permitting

Not Approved for Construction

Site Details 2

CONOR P. NAGLE
REGISTERED PROFESSIONAL ENGINEER
CIVIL
No. 9405

RECEIVED
NOV 26 2010

C-6

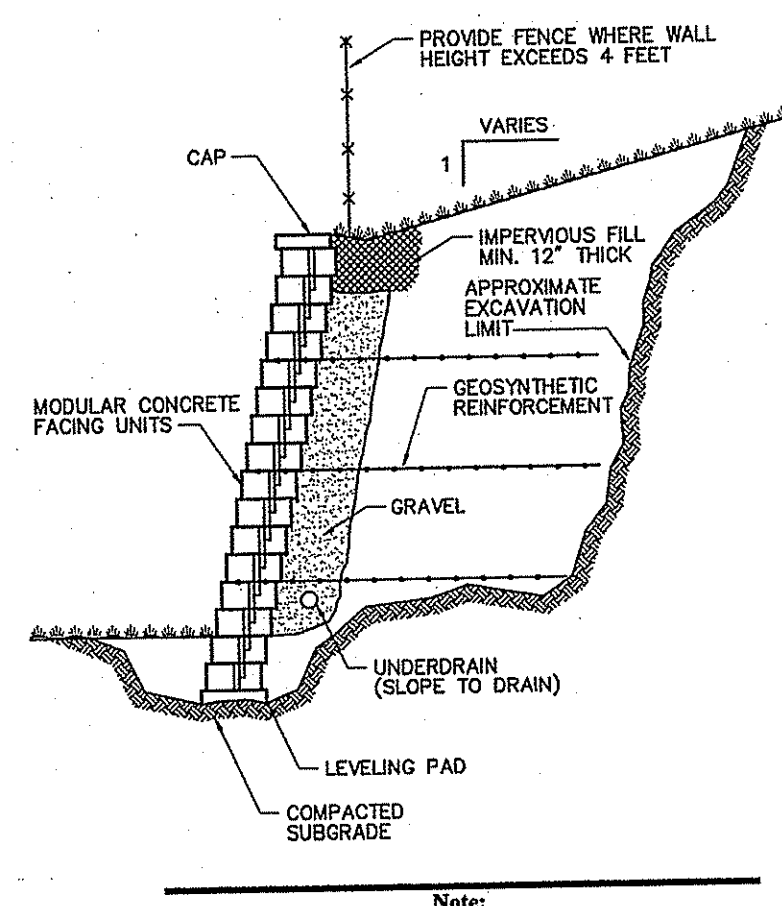
Sheet 6 of 8
Project Number 10797.07



Vanasse Hangen Brustlin, Inc.

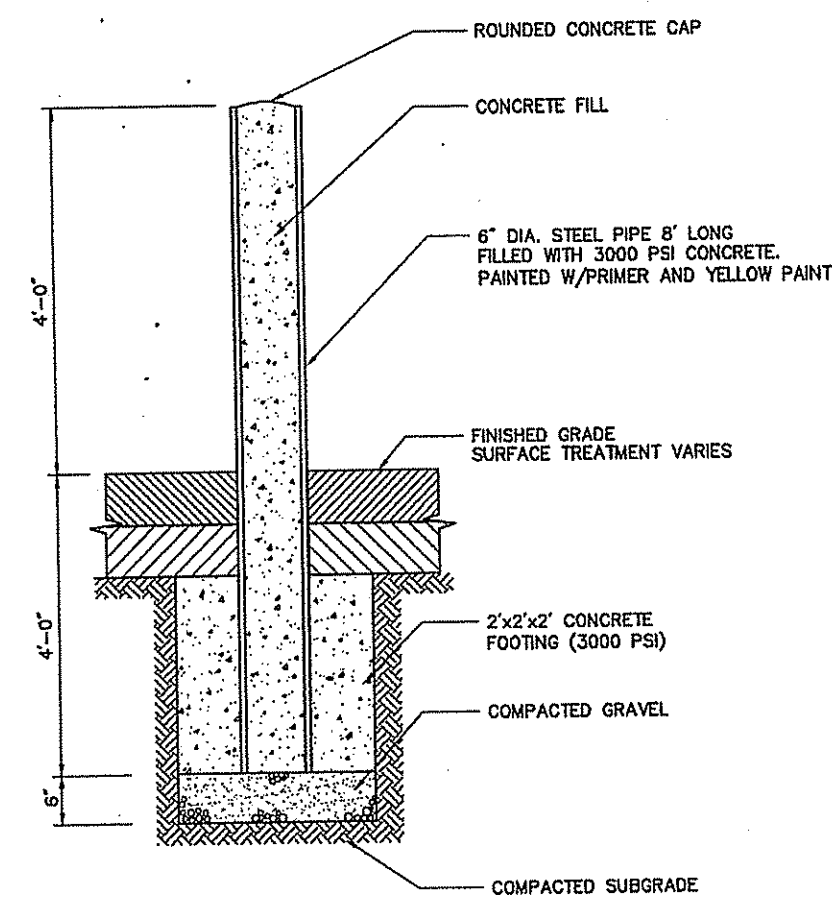
Transportation
Land Development
Environmental Services

101 Walnut Street, P.O. Box 9151
Watertown, Massachusetts 02471
617.924.1770 • FAX 617.924.2286

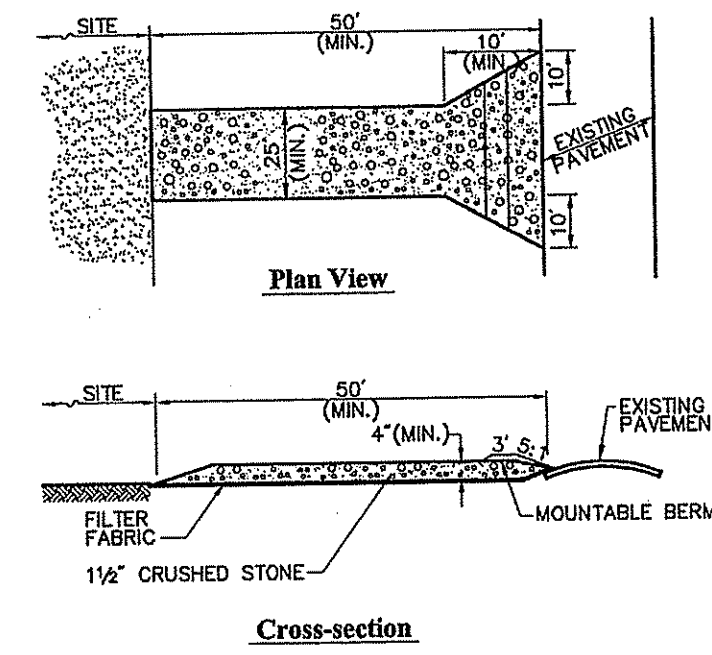


DETAIL PROVIDED FOR GENERAL INFORMATION ONLY. STAMPED FINAL DESIGN OF MODULAR WALL SYSTEM TO BE PROVIDED BY WALL MANUFACTURER BASED ON GEOTECHNICAL ENGINEERS RECOMMENDATIONS.

Modular Retaining Wall (Designed by Others) 6/08
N.T.S. Source: VHB LD_750

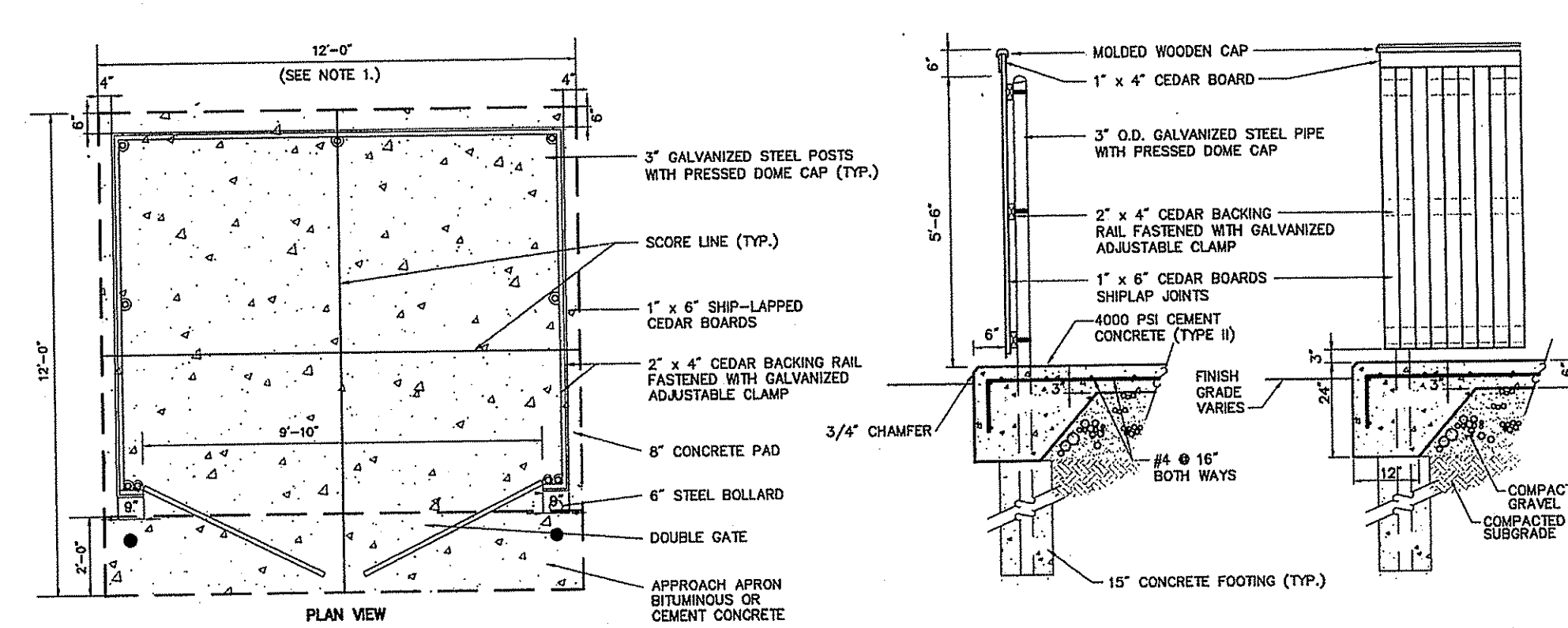


Bollard 6/08
N.T.S. Source: VHB LD_700a



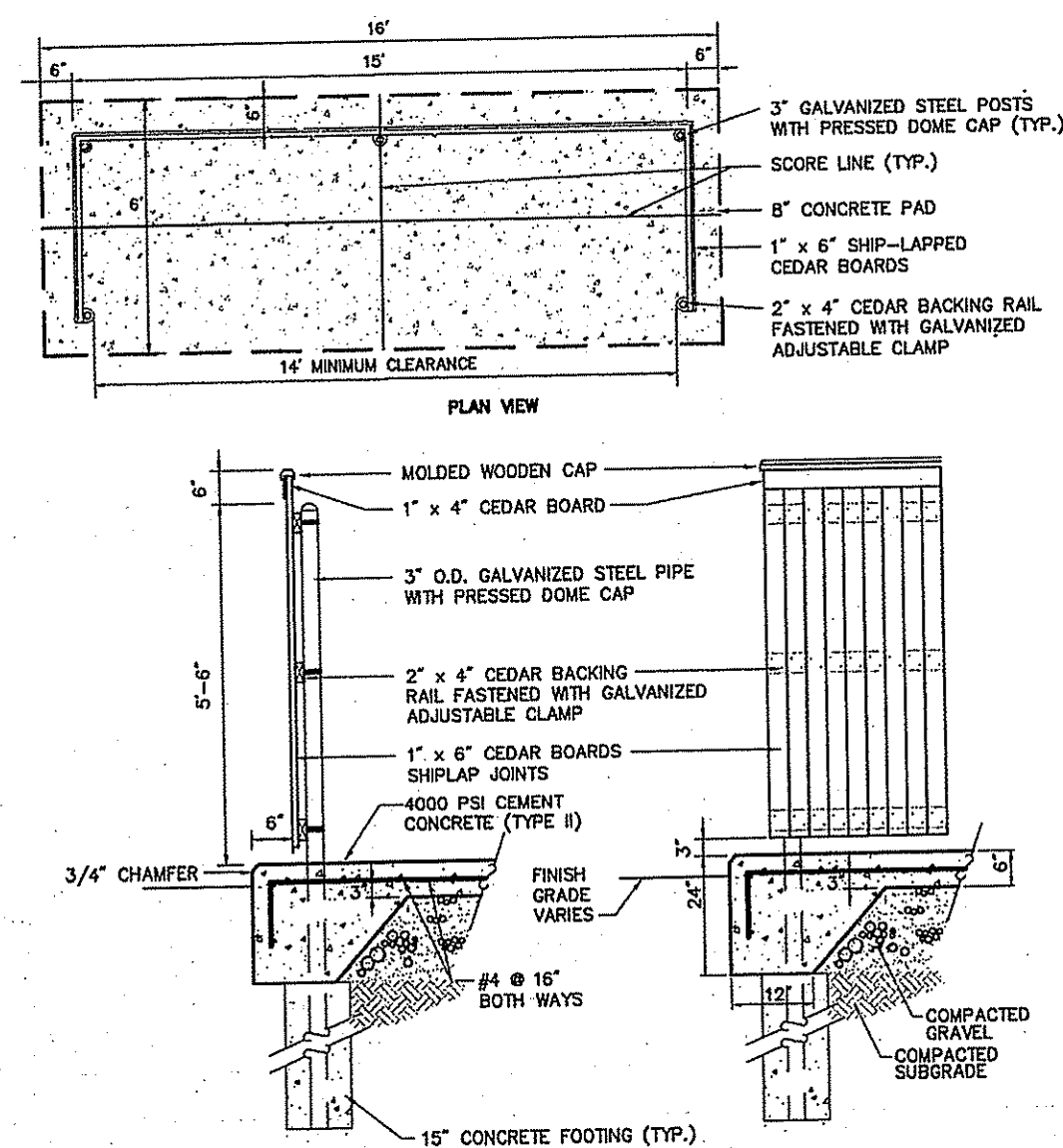
Notes:
1. ENTRANCE WIDTH SHALL BE A TWENTY-FIVE (25) FOOT MINIMUM, BUT NOT LESS THAN THE FULL WIDTH AT POINTS WHERE INGRESS OR EGRESS OCCURS.
2. THE ENTRANCE SHALL BE MAINTAINED IN A CONDITION WHICH SHALL PREVENT TRACKING OR FLOWING OF SEDIMENT ONTO PUBLIC RIGHTS-OF-WAY. THIS MAY REQUIRE PERIODIC TOP DRESSING WITH ADDITIONAL STONE AS CONDITIONS DEMAND AND REPAIR OR CLEANOUT OF ANY MEASURES USED TO TRAP SEDIMENT. ALL SEDIMENT SPILLED, DROPPED, WASHED OR TRACKED ONTO PUBLIC RIGHTS-OF-WAY MUST BE REMOVED IMMEDIATELY. BERM SHALL BE PERMITTED. PERIODIC INSPECTION AND MAINTENANCE SHALL BE PROVIDED AS NEEDED.
3. STABILIZED CONSTRUCTION EXIT SHALL BE REMOVED PRIOR TO FINAL FINISH MATERIALS BEING INSTALLED.

Stabilized Construction Exit 6/08
N.T.S. Source: VHB LD_682

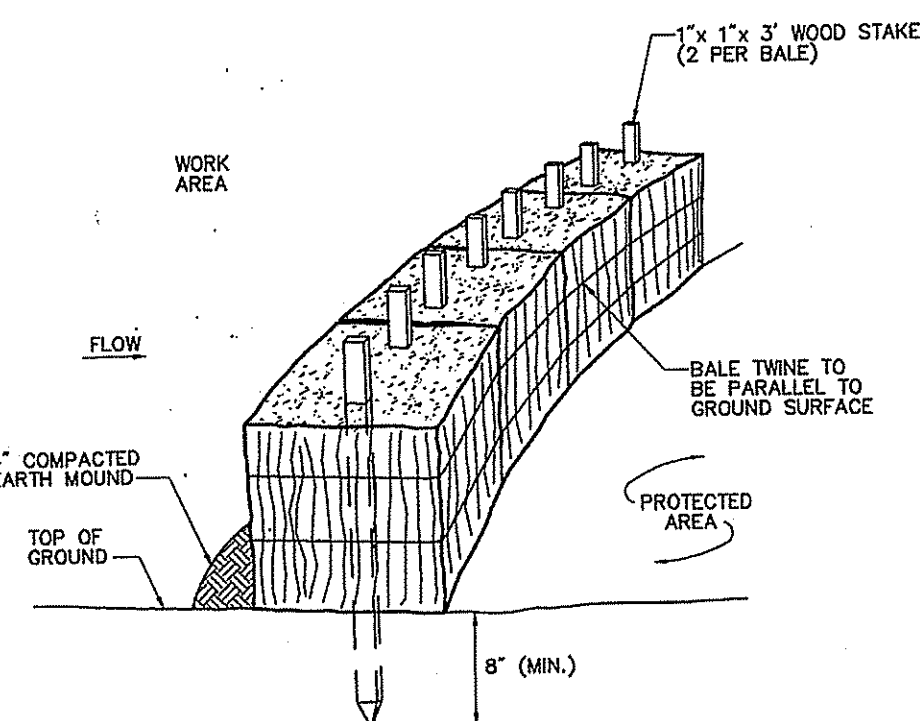


Notes:
1. DUMPSTER PAD DIMENSIONS SHOWN AS MINIMUM. REFER TO PLAN FOR ACTUAL DIMENSION.

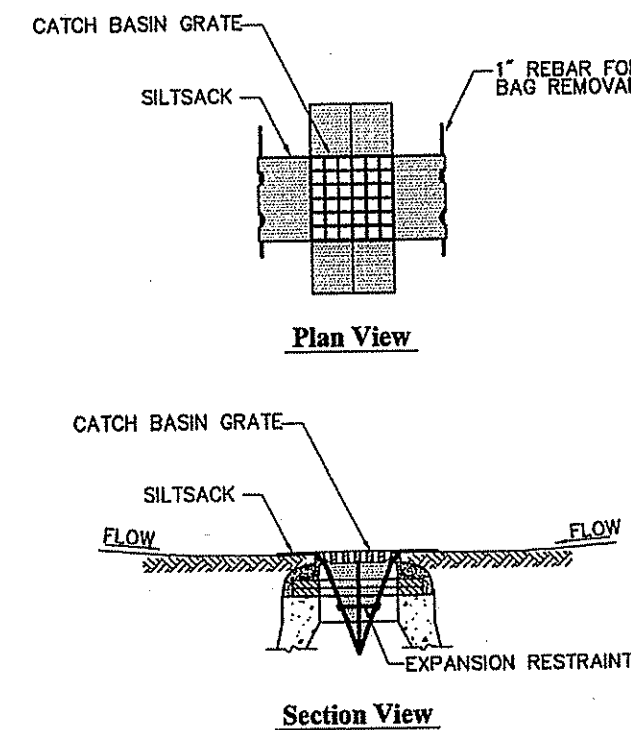
Dumpster Pad w/ Enclosure 2/09
N.T.S. Source: VHB LD_713



Vending Machine Pad w/ Enclosure 4/10
N.T.S. Source: VHB LD_713

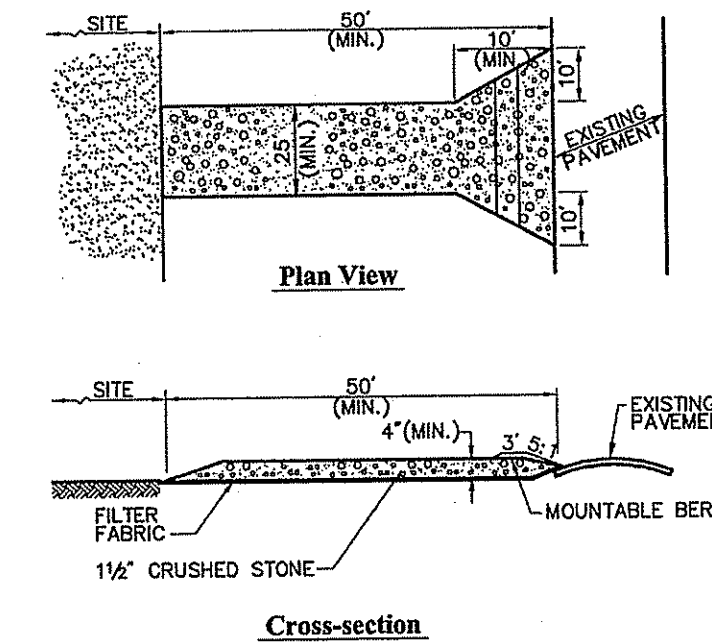


Hay Bale Barrier 6/08
N.T.S. Source: VHB LD_653



Notes:
1. INSTALL SILTSACK IN ALL CATCH BASINS WHERE INDICATED ON THE PLAN BEFORE COMMENCING WORK OR IN PAVED AREAS AFTER BINDER COURSE IS PLACED AND HAY BALES HAVE BEEN REMOVED.
2. GRATE TO BE PLACED OVER SILTSACK.
3. SILTSACK SHALL BE INSPECTED PERIODICALLY AND AFTER ALL STORM EVENTS AND CLEANING OR REPLACEMENT SHALL BE PERFORMED PROMPTLY AS NEEDED. MAINTAIN UNTIL UPSTREAM AREAS HAVE BEEN PERMANENTLY STABILIZED.

Silt sack Sediment Trap 6/08
N.T.S. Source: VHB LD_674



Notes:
1. ENTRANCE WIDTH SHALL BE A TWENTY-FIVE (25) FOOT MINIMUM, BUT NOT LESS THAN THE FULL WIDTH AT POINTS WHERE INGRESS OR EGRESS OCCURS.
2. THE ENTRANCE SHALL BE MAINTAINED IN A CONDITION WHICH SHALL PREVENT TRACKING OR FLOWING OF SEDIMENT ONTO PUBLIC RIGHTS-OF-WAY. THIS MAY REQUIRE PERIODIC TOP DRESSING WITH ADDITIONAL STONE AS CONDITIONS DEMAND AND REPAIR OR CLEANOUT OF ANY MEASURES USED TO TRAP SEDIMENT. ALL SEDIMENT SPILLED, DROPPED, WASHED OR TRACKED ONTO PUBLIC RIGHTS-OF-WAY MUST BE REMOVED IMMEDIATELY. BERM SHALL BE PERMITTED. PERIODIC INSPECTION AND MAINTENANCE SHALL BE PROVIDED AS NEEDED.
3. STABILIZED CONSTRUCTION EXIT SHALL BE REMOVED PRIOR TO FINAL FINISH MATERIALS BEING INSTALLED.

Stabilized Construction Exit 6/08
N.T.S. Source: VHB LD_682

2	Response to DEM Comments	11/24/2010	CPN
1	Checklist Resubmission	8/13/2010	CPN
No.	Revision	Date	Apprv.
Designed by	DAG	Drawn by	DAG
Checked by	CPN	CAD checked by	CPN
Approved by	RPM	Scale	As Noted
Date	June 30, 2010	Project Title	

Proposed Fuel Facility

35 Eddie Dowling Highway
North Smithfield, Rhode Island

Issued for
Local Permitting

Not Approved for Construction

Drawing Title
Site Details 3

DEPARTMENT OF ENVIRONMENTAL MANAGEMENT
OFFICE OF WATER RESOURCES
FRESHWATER WETLANDS PROGRAM
APPROVED WITH CONDITIONS
AS SPECIFIED IN THE LETTER OF APPROVAL
DATED Dec 13 2010 FILE # 10-0190
NO CHANGES ALLOWED WITHOUT PRIOR APPROVAL.
APPROVED PLANS MUST BE AT CONSTRUCTION SITE.
Matthew D. Wozniak

CONOR P. NAGLE
No. 9405
REGISTERED PROFESSIONAL ENGINEER
CIVIL
1/24/10

RECEIVED
NOV 26 2010
Drawing Number

C-7

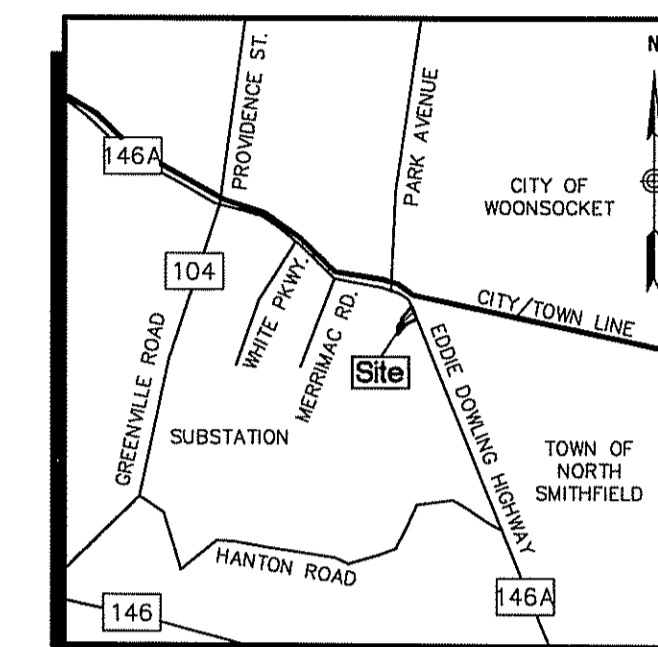
Sheet of 7 8
Project Number 10797.07



Vanasse Hangen Brustlin, Inc.

Transportation
Land Development
Environmental Services

10 Dorrance Street, Suite 400
Providence, Rhode Island 02903
401.272.8100 • FAX 401.273.9694



LOCUS MAP
NOT TO SCALE

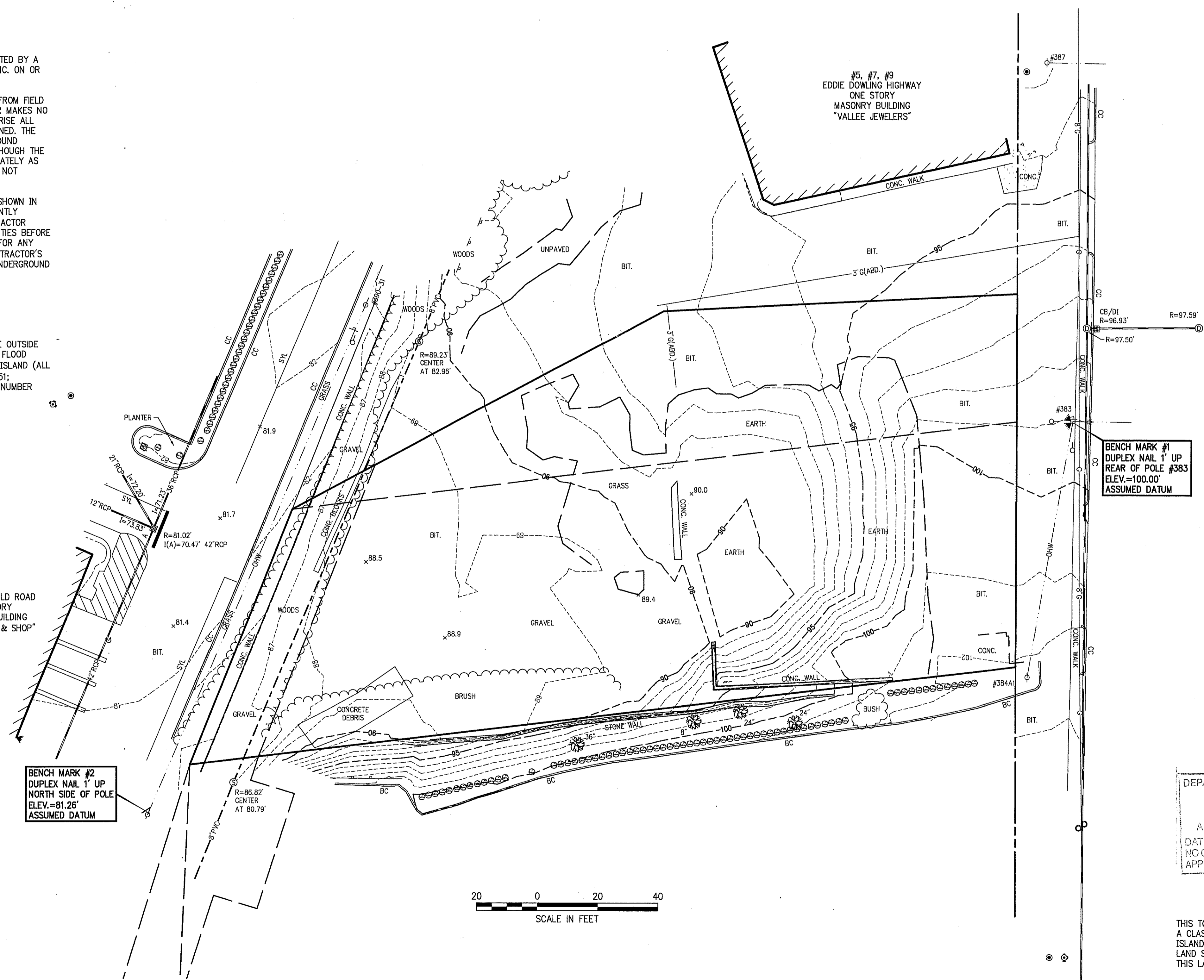
- Legend**
- | | | | | | |
|---------|----------------------------|---|----------------------|-------|--------------------------|
| --- | EDGE OF PAVEMENT | ■ | CATCH BASIN | CC | PRECAST CONCRETE CURB |
| - - - | EDGE OF GRAVEL | ■ | DOUBLE CATCH BASIN | SCE | SLOPED CONCRETE EDGING |
| - - - - | BUILDING OVERHANG | ⊙ | DRAIN MANHOLE | VGC | VERTICAL GRANITE CURB |
| --- | CURB | ⊙ | SEWER MANHOLE | BIT. | BITUMINOUS PAVEMENT |
| --- | CHAIN LINK FENCE | ⊙ | SIGNAL MANHOLE | CONC. | CONCRETE |
| --- | WOOD FENCE | ⊙ | WATER GATE | BWL | BROKEN WHITE LINE |
| --- | OVERHEAD WIRE | ⊙ | FIRE HYDRANT | DYL | DOUBLE YELLOW LINE |
| --- | UNDERGROUND DRAINAGE LINE | ⊙ | GAS GATE | SWL | SINGLE WHITE LINE |
| --- | UNDERGROUND SEWER LINE | ⊙ | STREET SIGN | SYL | SINGLE YELLOW LINE |
| --- | UNDERGROUND ELECTRIC LINE | ⊙ | LIGHT POLE | OHW | OVERHEAD LINE |
| --- | UNDERGROUND GAS LINE | ⊙ | FLOOD LIGHT | RCP | REINFORCED CONCRETE PIPE |
| --- | UNDERGROUND TELEPHONE LINE | ⊙ | UTILITY POLE | PVC | POLYVINYLCHLORIDE PIPE |
| --- | UNDERGROUND WATER LINE | ⊙ | UTILITY POLE W/LIGHT | CPP | CORRUGATED PLASTIC PIPE |
| --- | TREE LINE | ⊙ | GUY POLE OR WIRE | R= | RIM ELEVATION |
| --- | PROPERTY LINE | ⊙ | BOLLARD/POST | I= | INVERT ELEVATION |
| --- | EASEMENT LINE | ⊙ | MONITORING WELL | ELEV. | ELEVATION |
| --- | STATE HIGHWAY LINE | ⊙ | SPOT ELEVATION | MW-1 | MONITORING WELL |
| --- | CITY LAYOUT LINE | ⊙ | 100.0 x | | |
| --- | ZONING BOUNDARY LINE | ⊙ | | | |
| ⊙ | SHRUBS | | | | |
| ⊙ | DECIDUOUS TREE | | | | |
| ⊙ | CONCRETE PAD | | | | |

General Notes

- ALL ELEVATIONS ARE BASED UPON AN ASSUMED DATUM.
- THE EXISTING CONDITIONS SHOWN ON THIS PLAN WAS LOCATED BY A FIELD SURVEY, CONDUCTED BY VANASSE HANGEN BRUSTLIN, INC. ON OR BETWEEN APRIL 20, 2009 AND APRIL 24, 2009.
- THE UNDERGROUND UTILITIES SHOWN HAVE BEEN LOCATED FROM FIELD SURVEY INFORMATION AND EXISTING DRAWINGS. THE SURVEYOR MAKES NO GUARANTEES THAT THE UNDERGROUND UTILITIES SHOWN COMPRISE ALL SUCH UTILITIES IN THE AREA, EITHER IN-SERVICE OR ABANDONED. THE SURVEYOR FURTHER DOES NOT WARRANT THAT THE UNDERGROUND UTILITIES SHOWN ARE IN THE EXACT LOCATION INDICATED ALTHOUGH THE SURVEYOR DOES CERTIFY THAT THEY ARE LOCATED AS ACCURATELY AS POSSIBLE FROM INFORMATION AVAILABLE. THE SURVEYOR HAS NOT PHYSICALLY LOCATED THE UNDERGROUND UTILITIES.
- THE LOCATIONS OF EXISTING UNDERGROUND UTILITIES ARE SHOWN IN AN APPROXIMATE WAY ONLY AND HAVE NOT BEEN INDEPENDENTLY VERIFIED BY THE OWNER OR ITS REPRESENTATIVE. THE CONTRACTOR SHALL DETERMINE THE EXACT LOCATION OF ALL EXISTING UTILITIES BEFORE COMMENCING WORK, AND AGREES TO BE FULLY RESPONSIBLE FOR ANY AND ALL DAMAGES WHICH MIGHT BE OCCASIONED BY THE CONTRACTOR'S FAILURE TO EXACTLY LOCATE AND PRESERVE ANY AND ALL UNDERGROUND UTILITIES.

Zoning Notes

- THE PROJECT IS WITHIN ZONE X: AREAS DETERMINED TO BE OUTSIDE THE 0.2% ANNUAL CHANCE FLOODPLAIN; AS SHOWN ON FIRM: FLOOD INSURANCE RATE MAP FOR THE PROVIDENCE COUNTY, RHODE ISLAND (ALL JURISDICTIONS) TOWN OF NORTH SMITHFIELD, PANEL 157 OF 451; COMMUNITY PANEL NO. 440021; PANEL 0157; SUFFIX G; MAP NUMBER 44007C0157G; EFFECTIVE DATE: MARCH 2, 2009.



EDDIE DOWLING HIGHWAY
R.I. ROUTE 146A



DEPARTMENT OF ENVIRONMENTAL MANAGEMENT
OFFICE OF WATER RESOURCES
FRESHWATER WETLANDS PROGRAM
APPROVED WITH CONDITIONS
AS SPECIFIED IN THE LETTER OF APPROVAL.
DATED DEC 13 2010 FILE # 10-0190
NO CHANGES ALLOWED WITHOUT PRIOR APPROVAL.
APPROVED PLANS MUST BE AT CONSTRUCTION SITE.

THIS TOPOGRAPHIC SURVEY AND PLAN CONFORM TO A CLASS III STANDARD AS ADOPTED BY THE RHODE ISLAND BOARD OF REGISTRATION FOR PROFESSIONAL LAND SURVEYORS; AND AS SUCH DOES NOT REPRESENT THIS LAND SURVEYOR'S BOUNDARY LINE OPINION

PATRICK W. McCOURT, P.L.S. #1964 DATE

No.	Revision	Date	Appr.

**Super Stop & Shop
Proposed Fueling Facility**

35 Eddie Dowling Highway
North Smithfield, Rhode Island

Design

Existing Conditions Plan
Assessor's Plat 21
Lot 67

NOV 26 2010
Drawing Number

PATRICK W. McCOURT
No. 1964
PROFESSIONAL LAND SURVEYOR

Sv-2
Sheet 2 of 2
Project Number 10797.07

Saved Wednesday, May 06, 2009 9:44:45 AM P:\10797.07\1079707E.XS