



REFERENCES

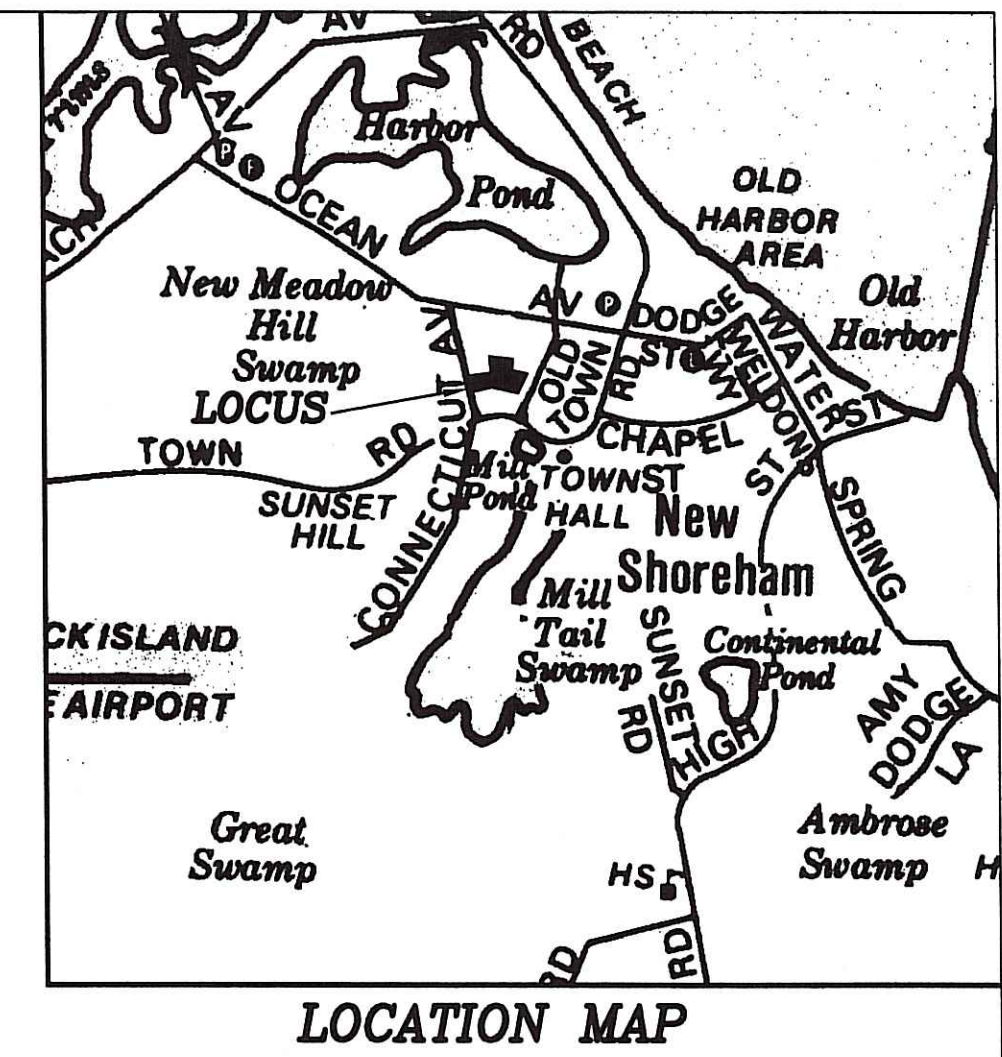
- 1.) "PLAN OF NORTHERLY EXTENSION OF NEW HIGHWAY BLOCK ISLAND, R.I. SHOWING PROPOSED LINES AS LAID OUT MARCH 6, 1898 SCALE 40 FEET TO AN INCH CHAS. F. CHASE ENGINEERS - RECORDED IN TOWN CLERK'S OFFICE"
- 2.) "PROPERTY SURVEY OF LOT 41 NEW SHOREHAM, R.I. ASSESSOR PLAT 6 LOCATED ON CONNECTICUT AVENUE OWNED BY MIKE AND GAIL DUGAN DATED 10/18/03 REV. 1-29-04 SCALE 1"=20' BY HILLBERN LAND SURVEYING SEE PLAT # 665"
- 3.) "ADMINISTRATIVE SUBDIVISION FOR KELLY'S OF NEW SHOREHAM, INC. & NANCY KASSEL & CAROL DODGE ASSESSORS PLAT 6 LOT 20 & 33 NEW SHOREHAM, R.I. SURVEYOR: JAMES P. LAWLESS PLS SCALE 1"=40' REV. JAN. 26, 2004 - SEE PLAT # 662"
- 4.) "PLAN OF LAND BELONGING TO THOMAS REALTY ASSOCIATES LTD. TO BE CONVEYED TO THE TOWN OF NEW SHOREHAM BY STANLEY ENGINEERING, INC. SCALE: 1"=40' MARCH, 1976" - SEE L.E. VOL.43 PAGE 60"
- 5.) "PLAN OF SURVEY IN NEW SHOREHAM, R.I. FOR ANNETTE D. COREY BY STANLEY ENGINEERING, INC. SCALE 1"=30' JUNE, 1973"

LEGEND (EXISTING)

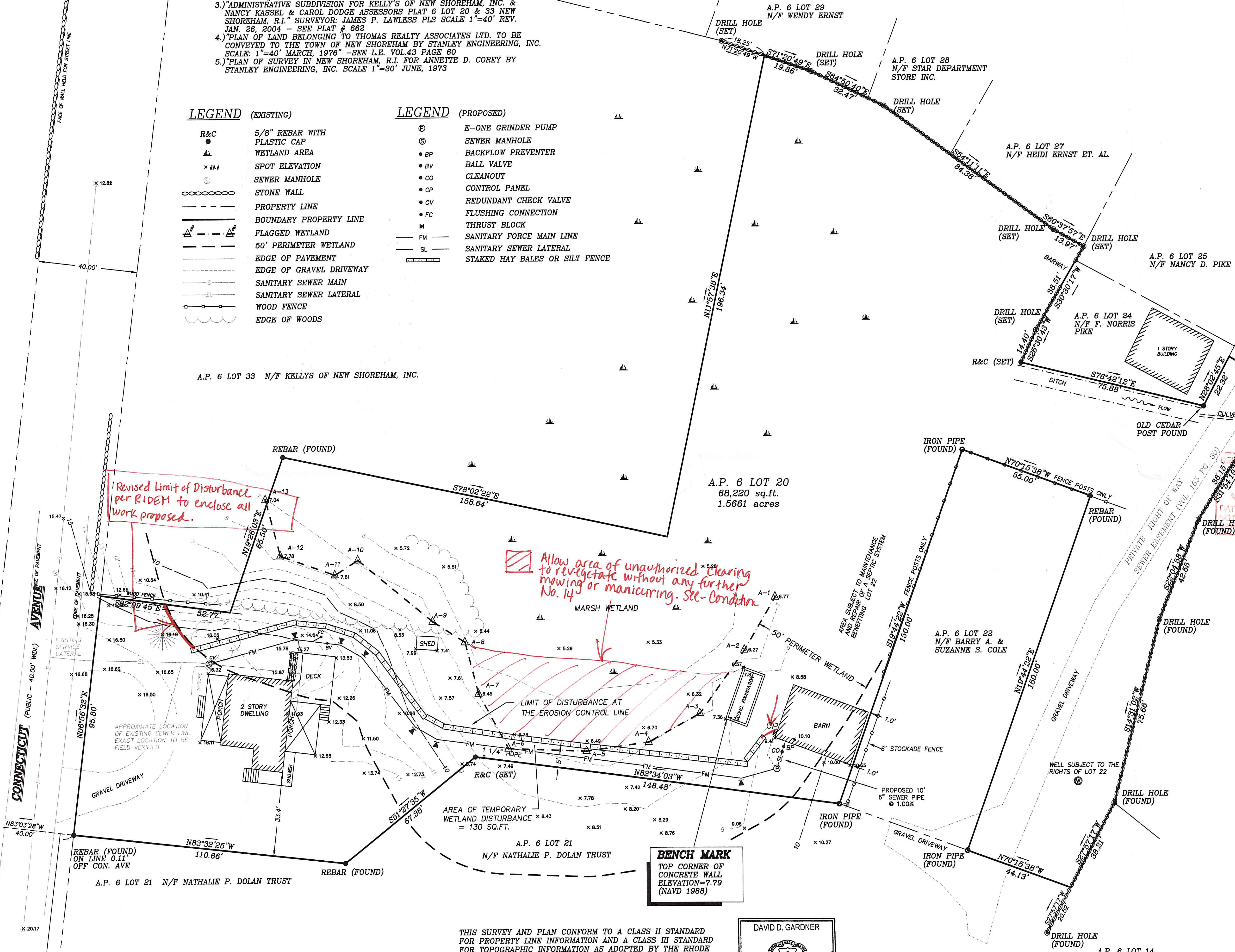
- R&C 5/8" REBAR WITH PLASTIC CAP
- WETLAND AREA
- SPOT ELEVATION
- SEWER MANHOLE
- STONE WALL
- PROPERTY LINE
- BOUNDARY PROPERTY LINE
- FLAGGED WETLAND
- 50' PERIMETER WETLAND
- EDGE OF PAVEMENT
- EDGE OF GRAVEL DRIVEWAY
- SANITARY SEWER MAIN
- SANITARY SEWER LATERAL
- WOOD FENCE
- EDGE OF WOODS

LEGEND (PROPOSED)

- E-ONE GRINDER PUMP
- SEWER MANHOLE
- BACKFLOW PREVENTER
- BALL VALVE
- CLEANOUT
- CONTROL PANEL
- REDUNDANT CHECK VALVE
- FLUSHING CONNECTION
- THRUST BLOCK
- SANITARY FORCE MAIN LINE
- SANITARY SEWER LATERAL
- STAKED HAY BALES OR SILT FENCE



LOCATION MAP



Revised Limit of Disturbance per RIDEM to enclose all work proposed.

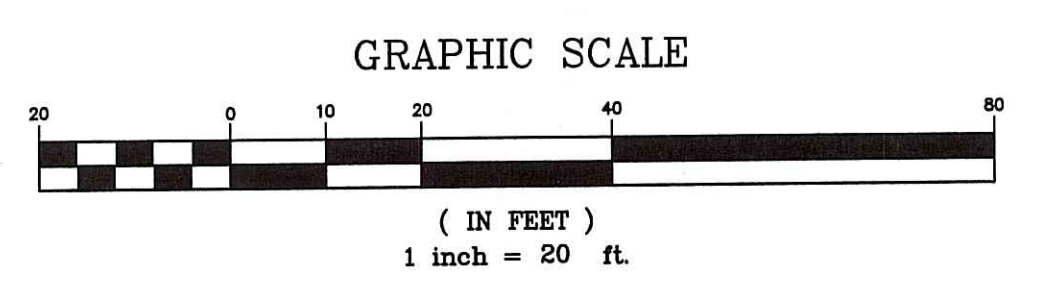
Allow area of unauthorized clearing to revegetate without any further mowing or manicuring. See-Condition No. 14

DEPARTMENT OF ENVIRONMENTAL MANAGEMENT
OFFICE OF WATER RESOURCES
FRESHWATER WETLANDS PROGRAM
APPROVED WITH CONDITIONS
AS SPECIFIED IN THE LETTER OF APPROVAL
APR 26 2011 FILE # 11-0042
UNLAWFUL CHANGES ALLOWED WITHOUT PRIOR APPROVAL
UNLAWFUL CHANGES MUST BE AT CONSTRUCTION SITE
Nancy L. Freeman

MARK T. CONBOY
No. 5783
REGISTERED PROFESSIONAL ENGINEER
CIVIL
3-16-11

NOTES:

1. BACKWATER PREVENTORS SHALL CONFORM TO THE NEW SHOREHAM BUILDING INSPECTOR'S REQUIREMENTS AND THE BUILDING OFFICIALS CODE ADMINISTRATORS BASIC NATIONAL PLUMBING CODE, ARTICLE 10, SECTION P-1003.0.
2. MATERIALS AND INSTALLATION SHALL CONFORM TO THE NEW SHOREHAM UTILITY STANDARDS.
3. LOW PRESSURE PIPE AND FITTINGS SHALL BE HDPE OR POLYVINYL CHLORIDE PIPE CLASS 200 (SDR 21) WITH PUSH-ON JOINTS.
4. CONTROL PANEL MUST INCLUDE AN EMERGENCY RECEPTICLE FOR GENERATOR CONNECTION.
5. SANITARY FORCE MAIN BENDS SHALL NOT EXCEED 22 DEGREES.
6. SANITARY FORCE MAIN TO BE PRESSURE TESTED AT 150 PSI.



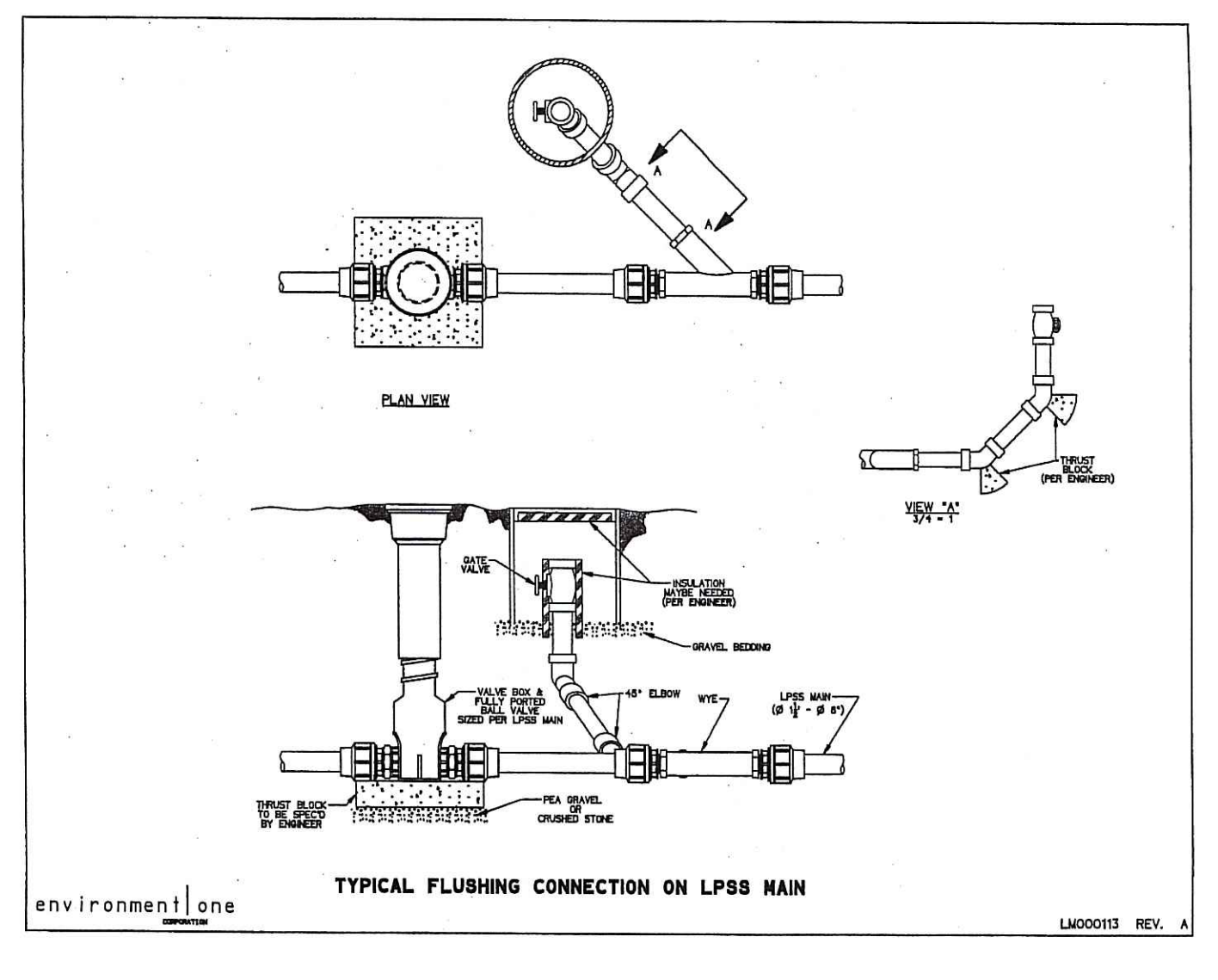
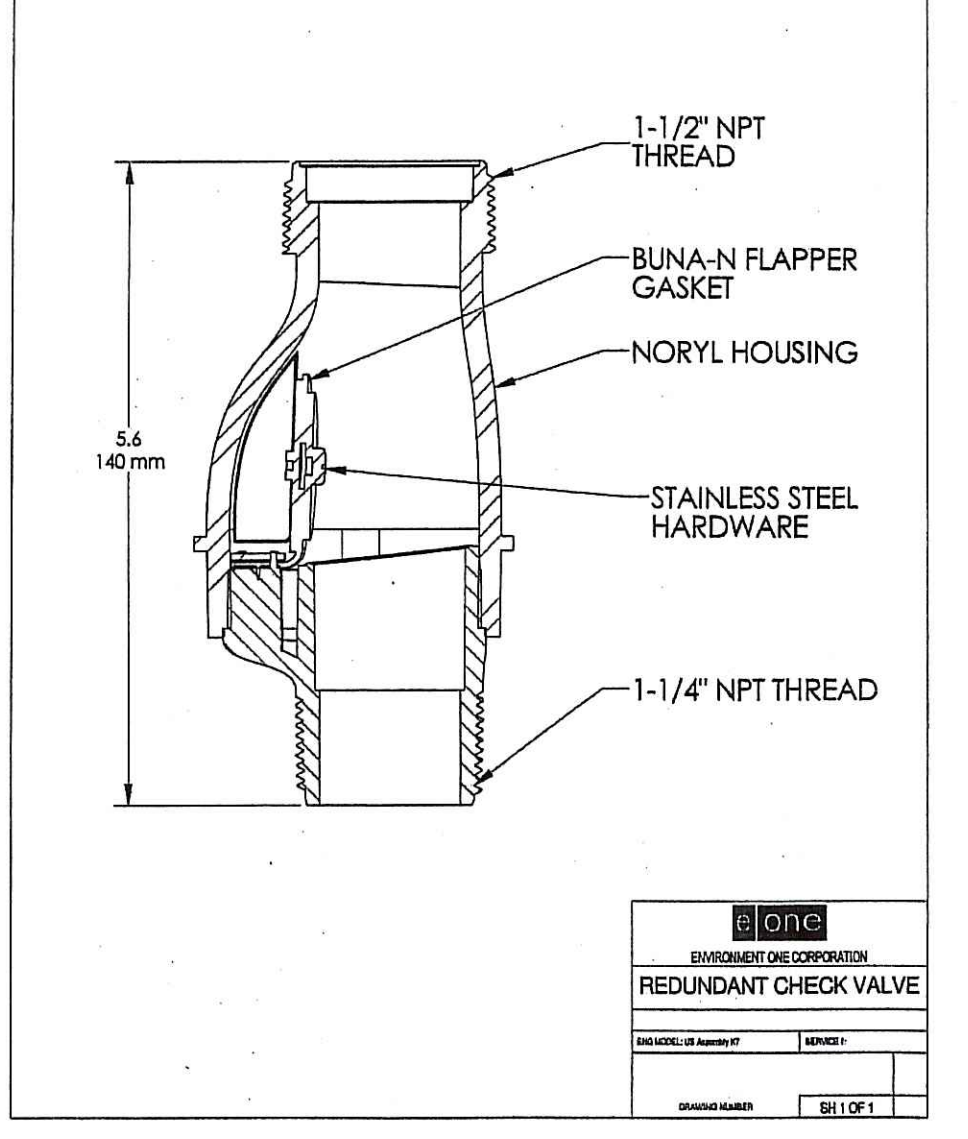
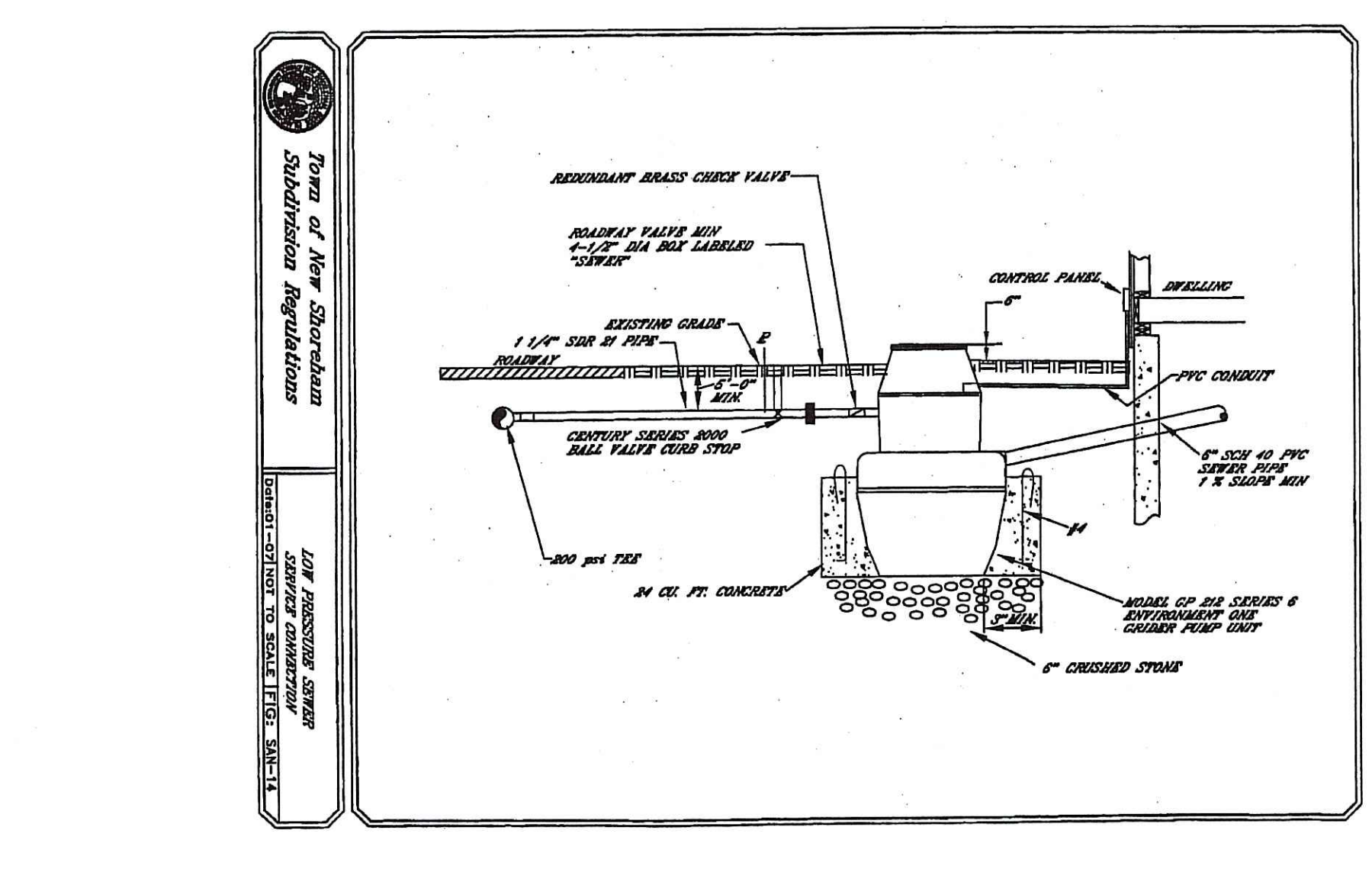
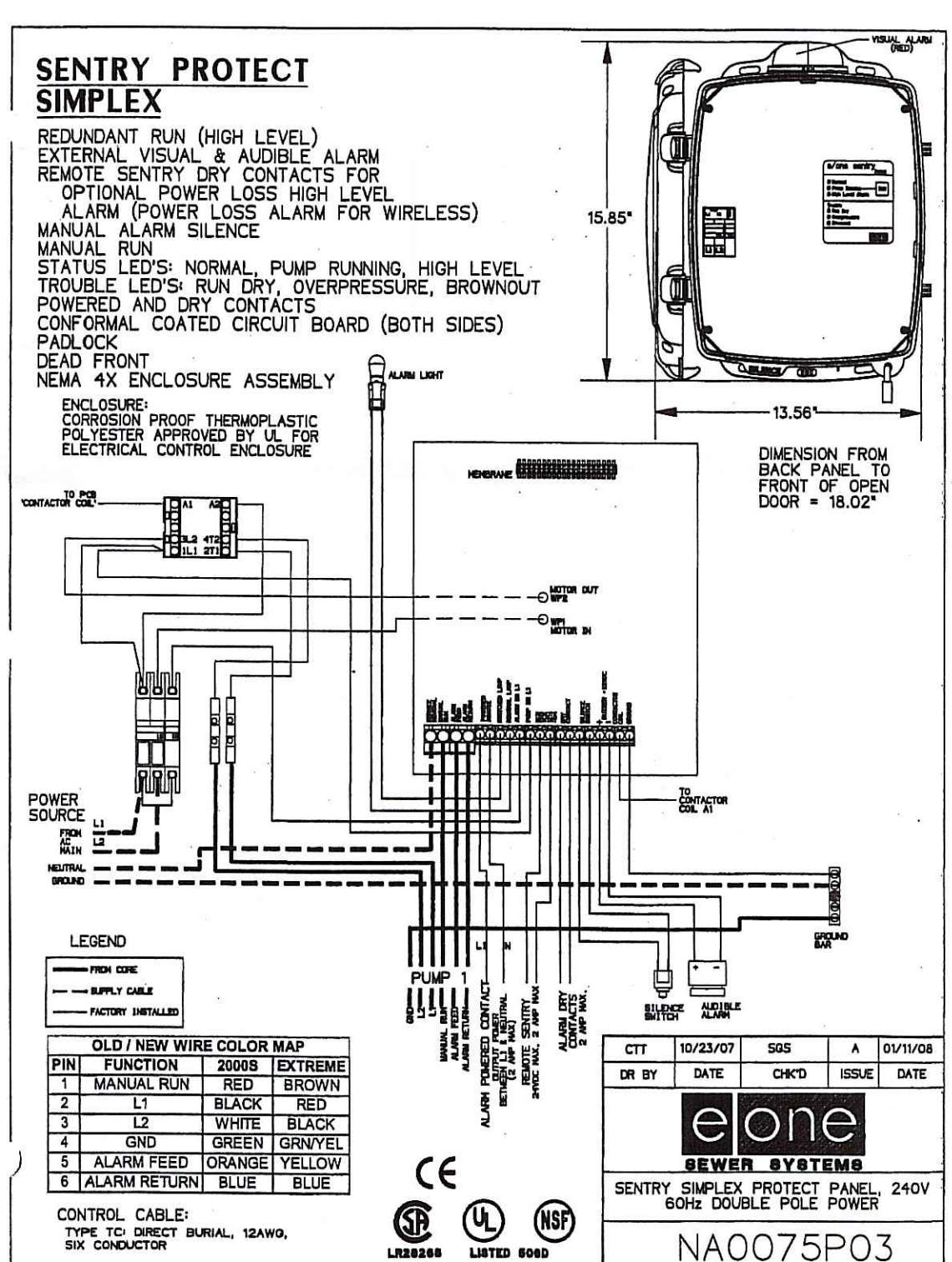
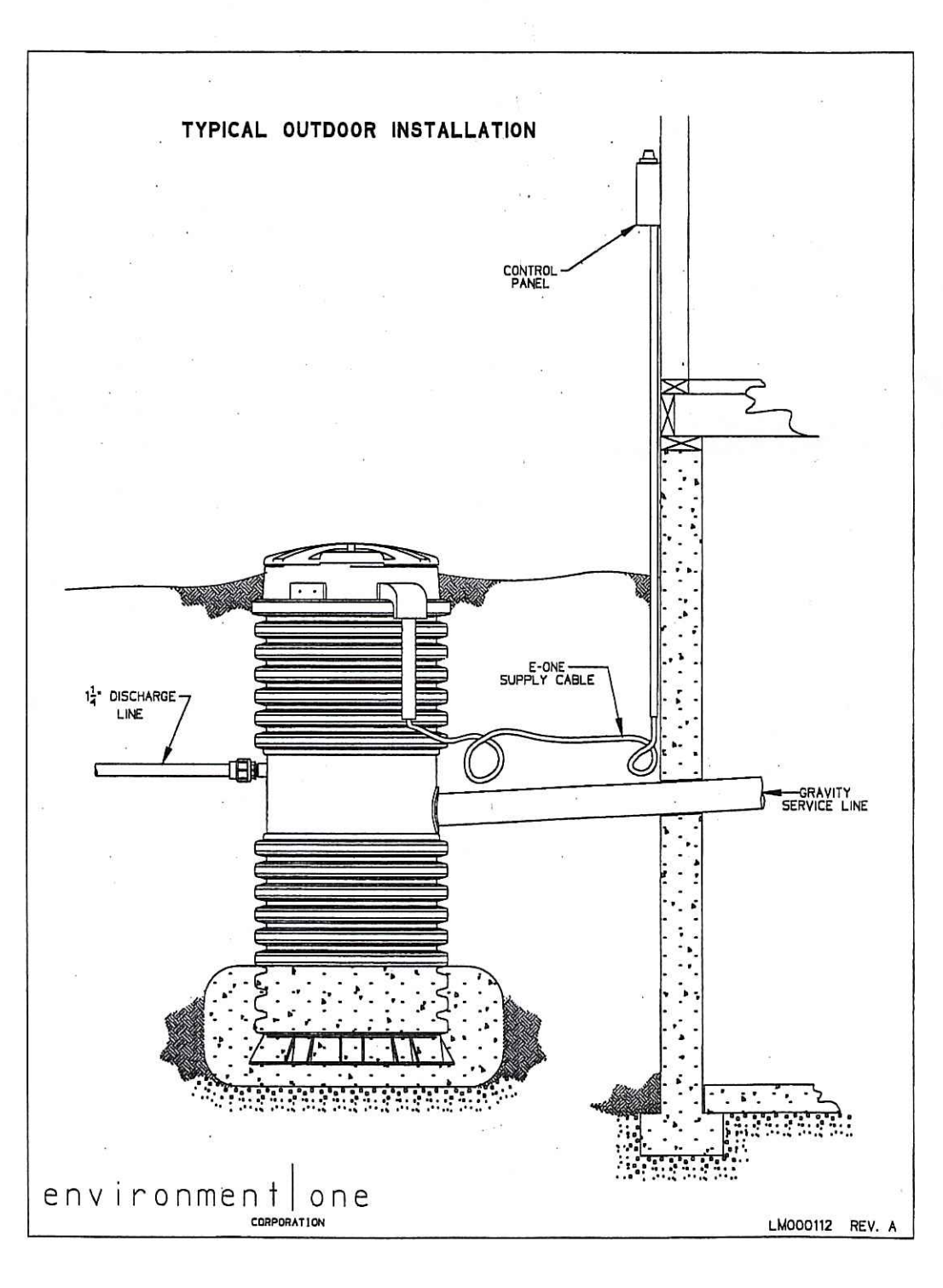
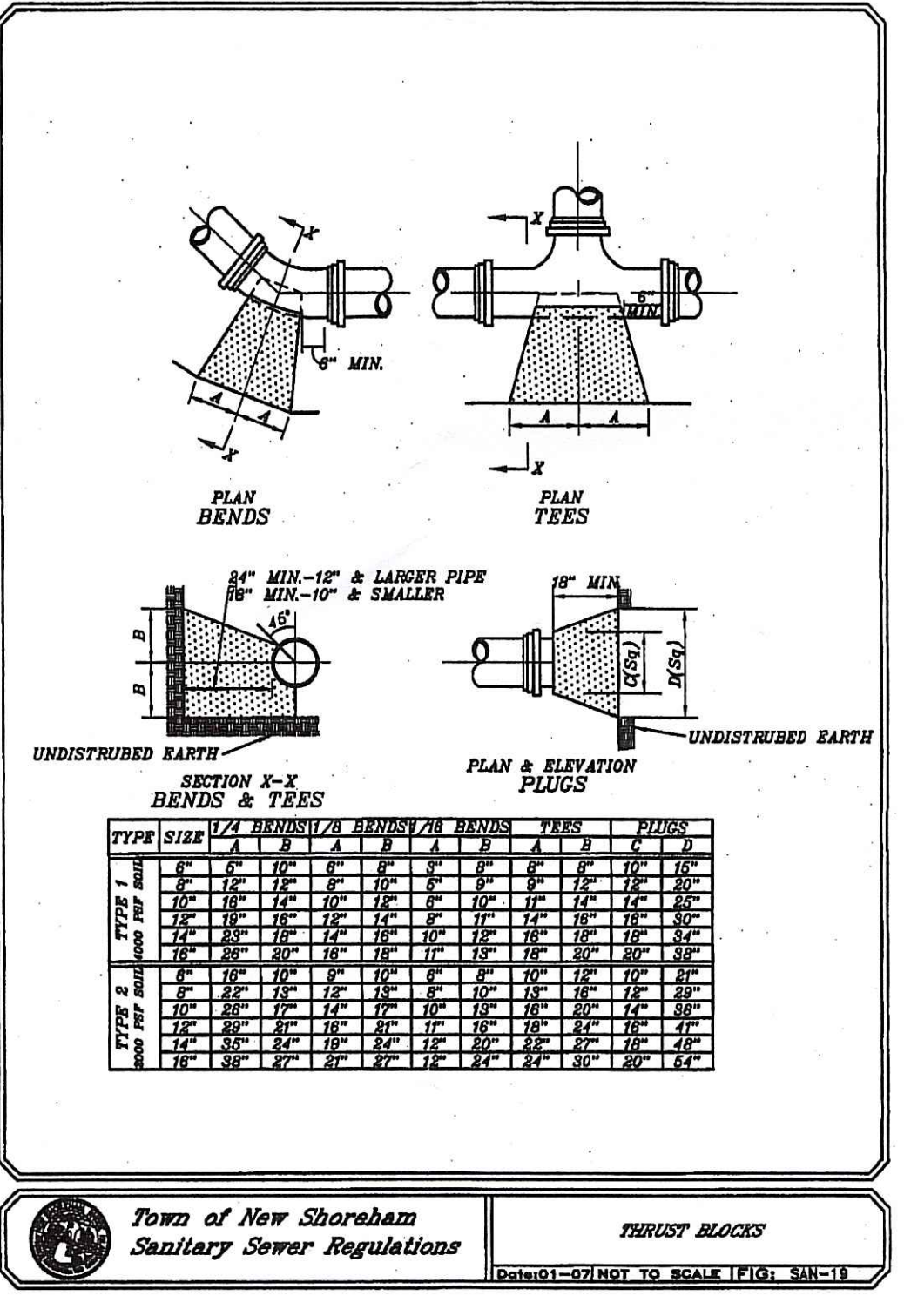
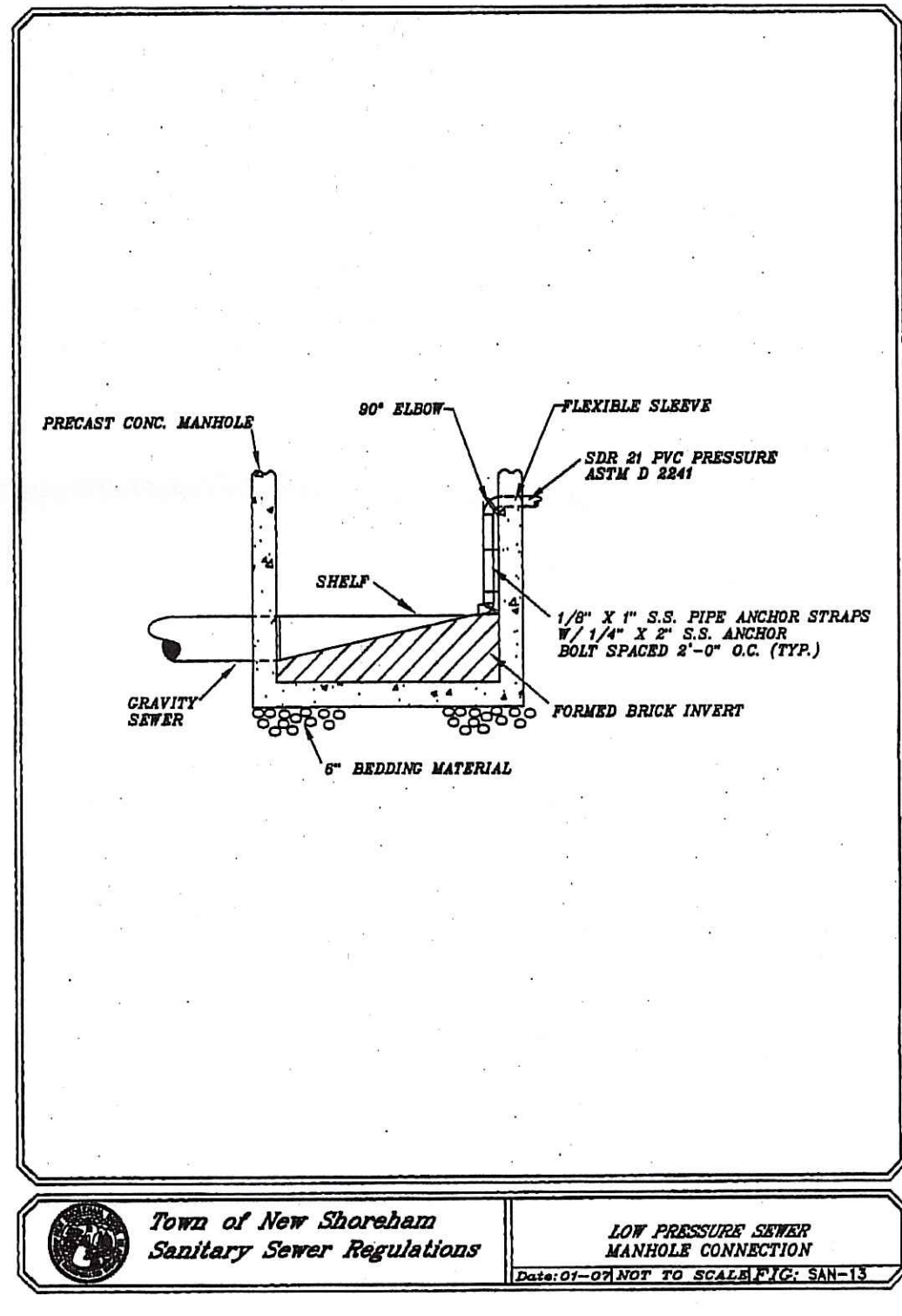
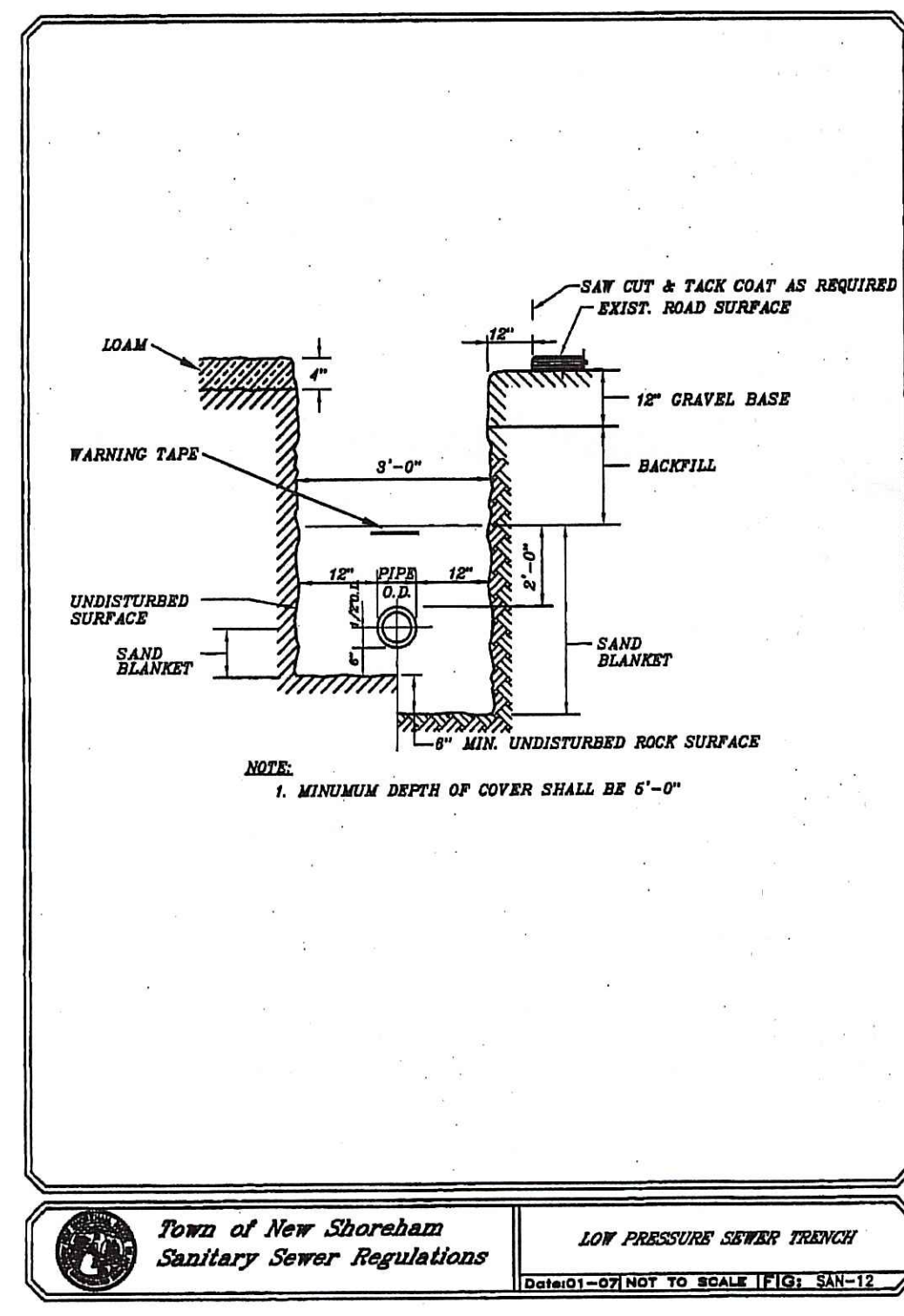
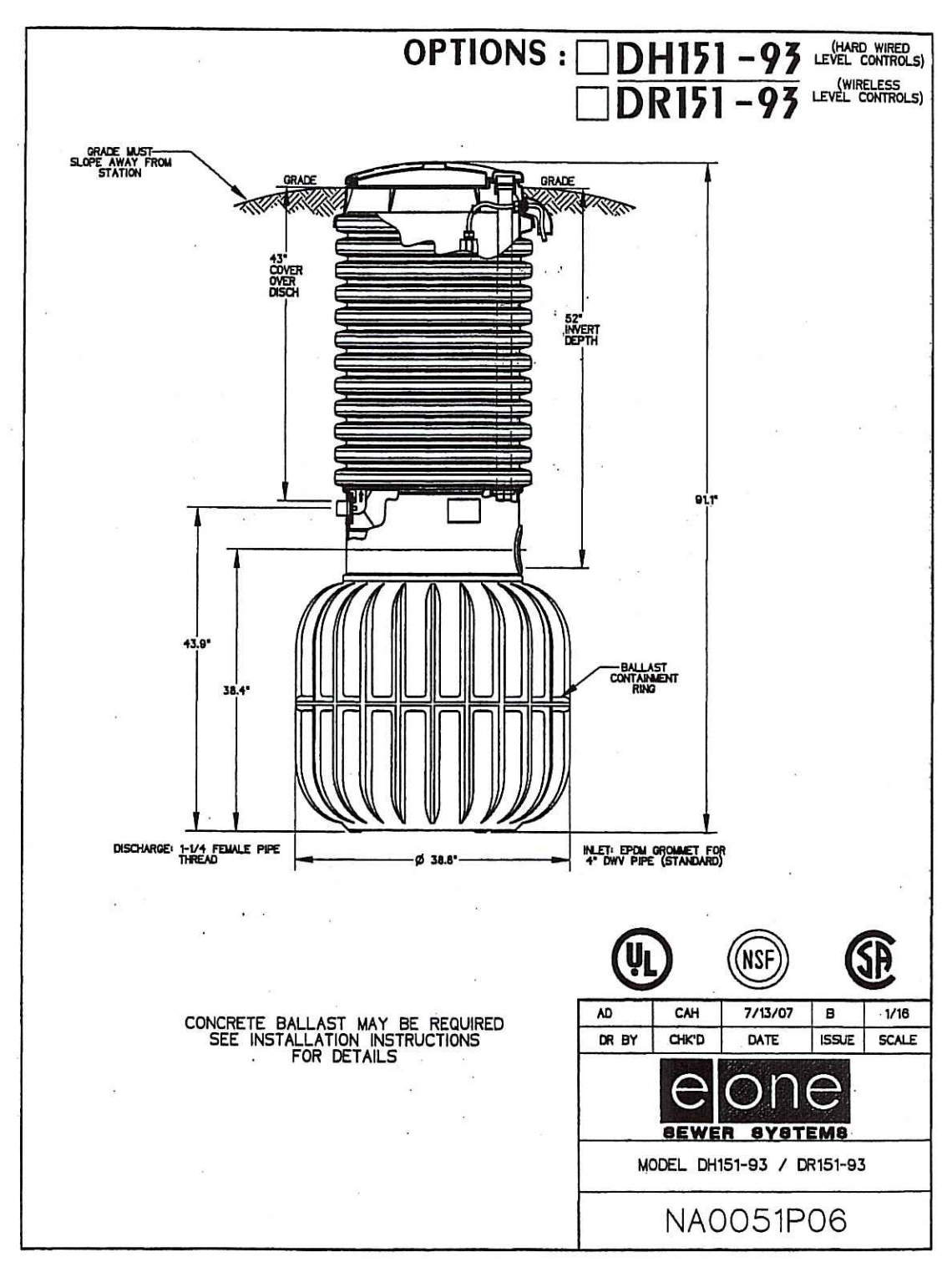
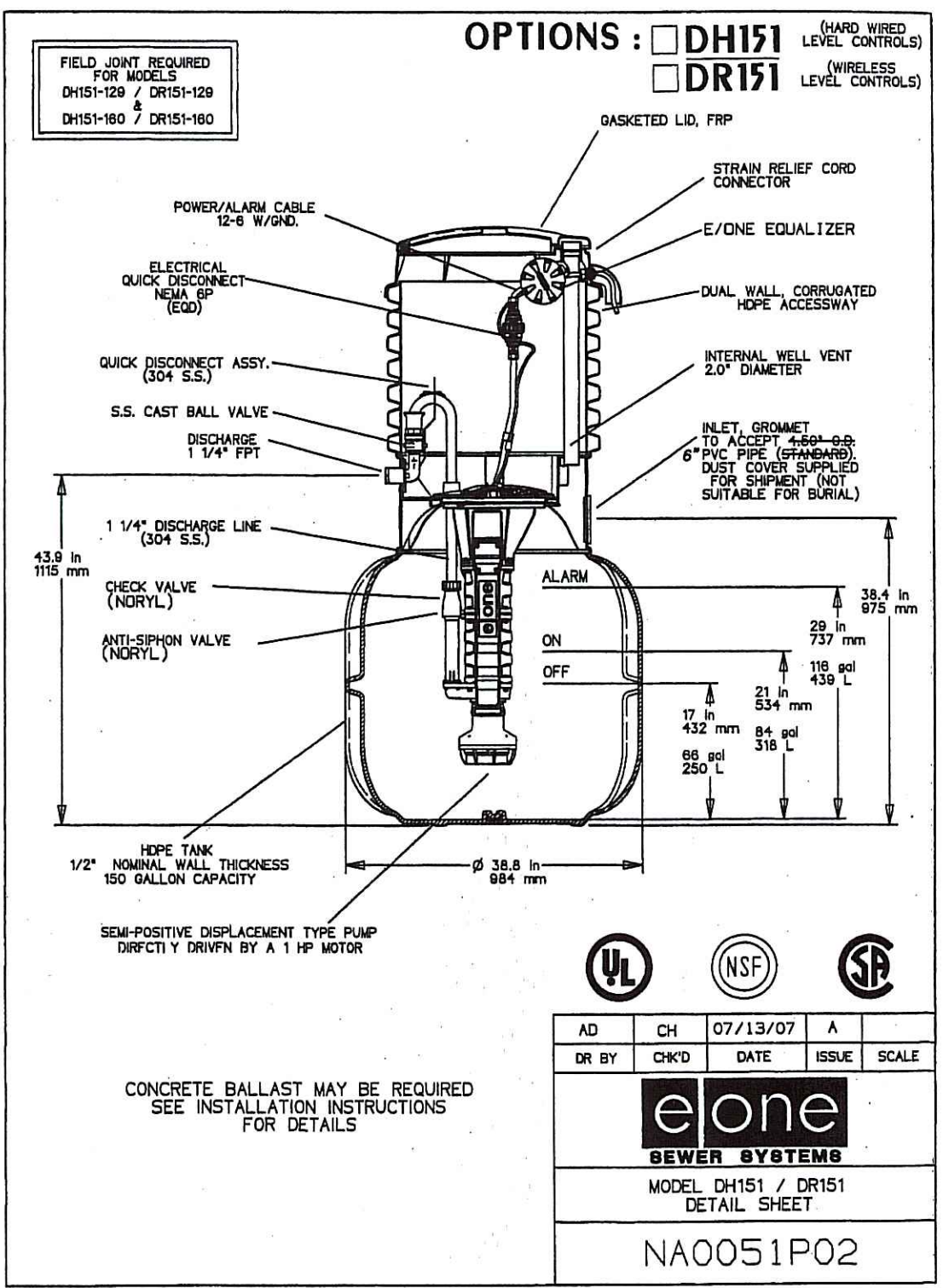
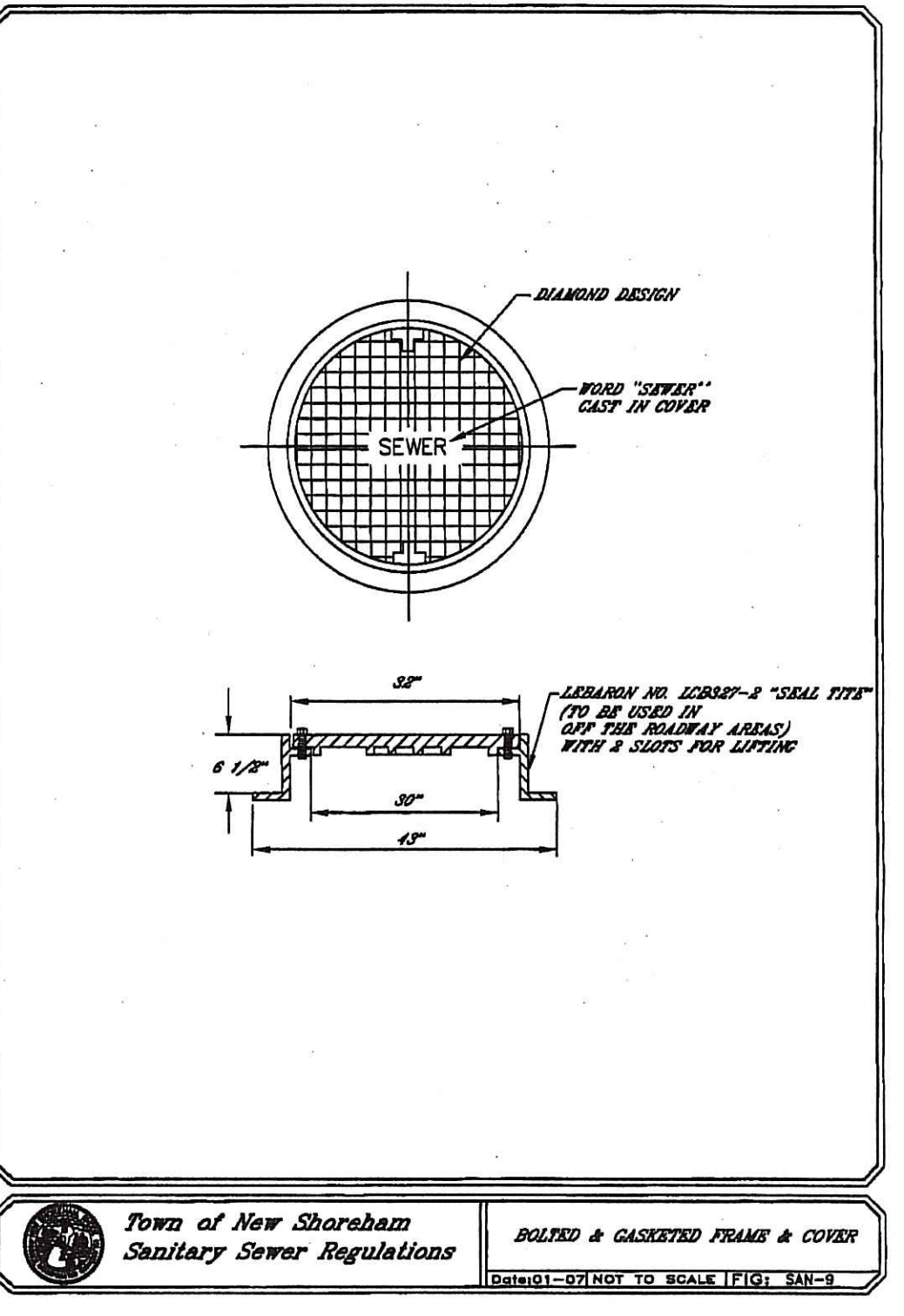
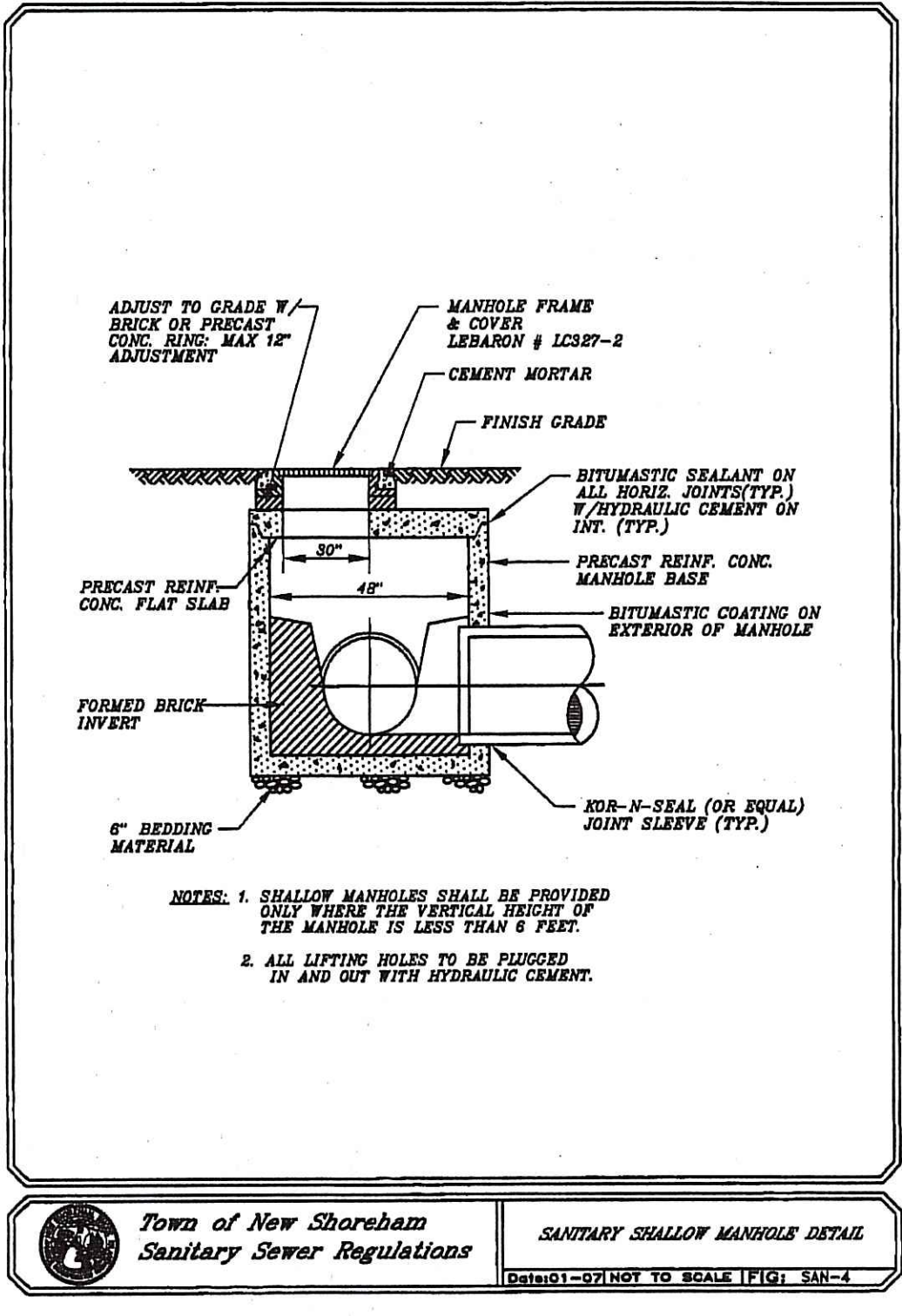
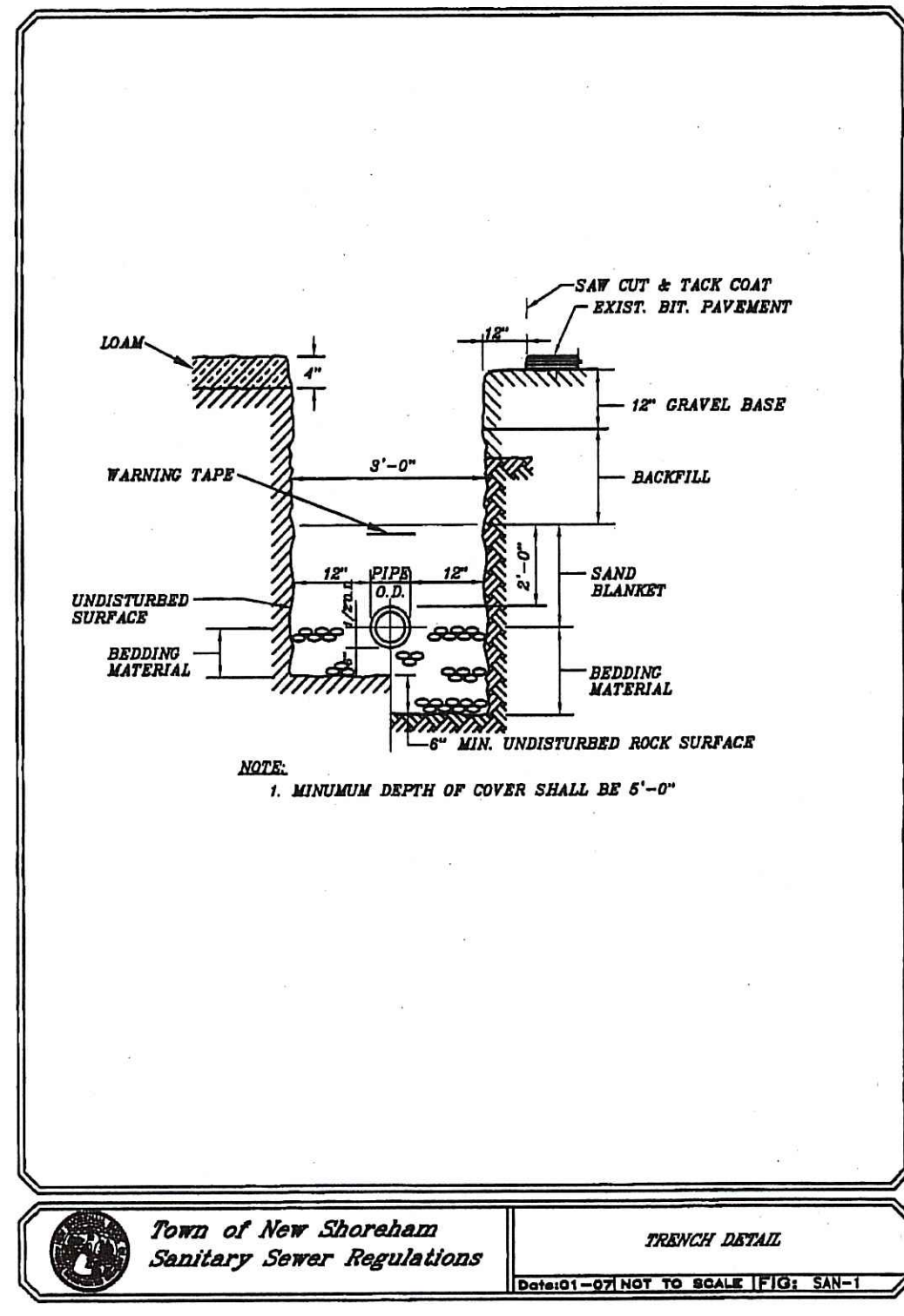
THIS SURVEY AND PLAN CONFORM TO A CLASS II STANDARD FOR PROPERTY LINE INFORMATION AND A CLASS III STANDARD FOR TOPOGRAPHIC INFORMATION AS ADOPTED BY THE RHODE ISLAND BOARD OF REGISTRATION FOR PROFESSIONAL LAND SURVEYORS.

BY: *David D. Gardner*
REGISTERED PROFESSIONAL LAND SURVEYOR

DAVID D. GARDNER
No. 1809
PROFESSIONAL LAND SURVEYOR

BENCH MARK
TOP CORNER OF CONCRETE WALL
ELEVATION=7.79 (NAVD 1988)

DATE	PROJECT NO.	SITE PLAN 513 CONNECTICUT AVENUE NEW SHOREHAM, R.I. FOR PHOEBE SALTEN A.P. 6 LOT 20
3/16/11	07-073	
SCALE	DRAWING NO.	DAVID D. GARDNER & ASSOCIATES, INC. 200 METRO CENTER BOULEVARD WARWICK, RHODE ISLAND 02886 (401) 738-3200 / FAX:(401) 739-4740 ENGINEERS • SURVEYORS • PLANNERS
1"=20'		
DESIGNED BY	M.T.C.	SHEET NO. 1 OF 3
DRAWN BY	D.D.G.	
CHECKED BY	D.D.G.	



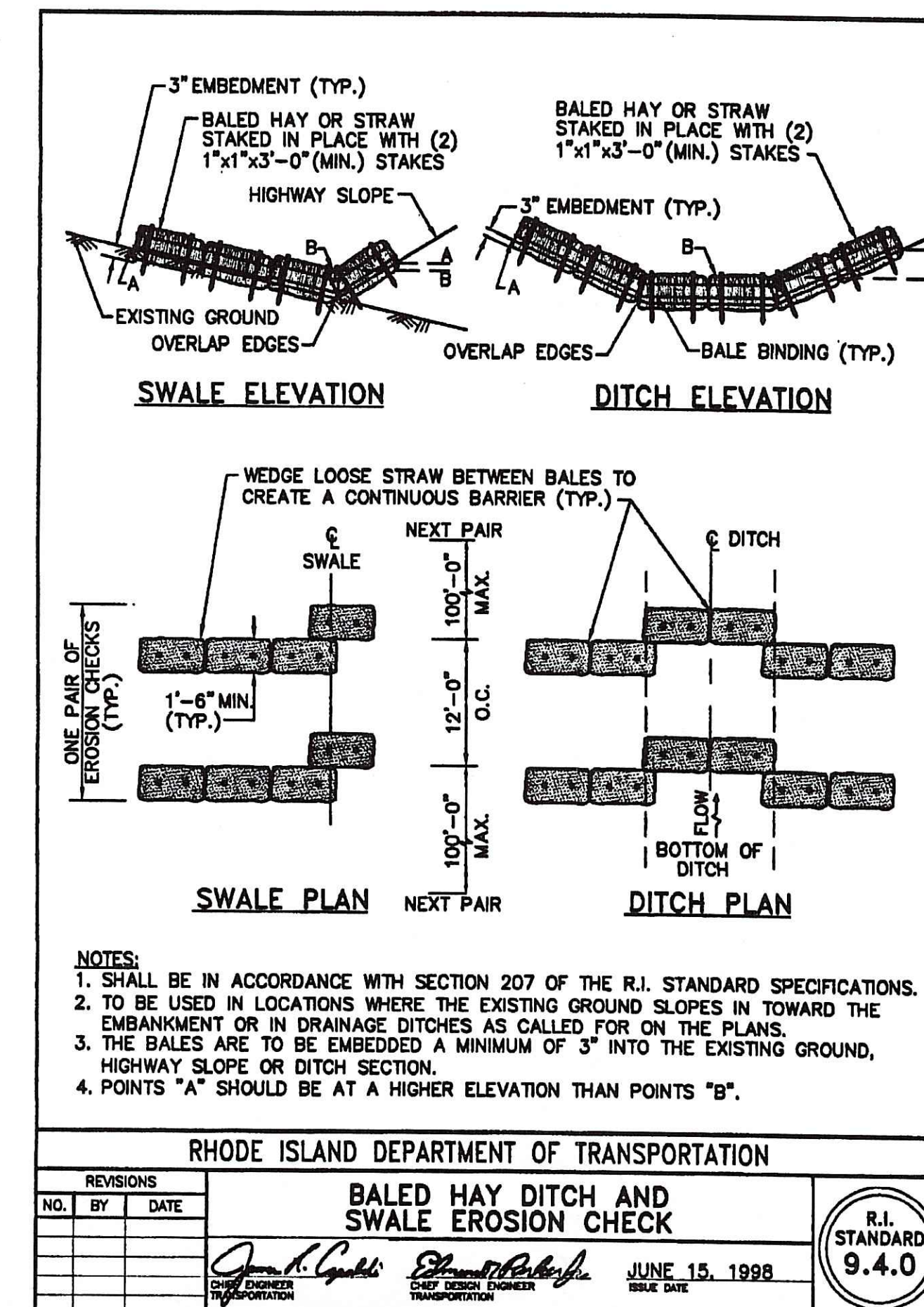
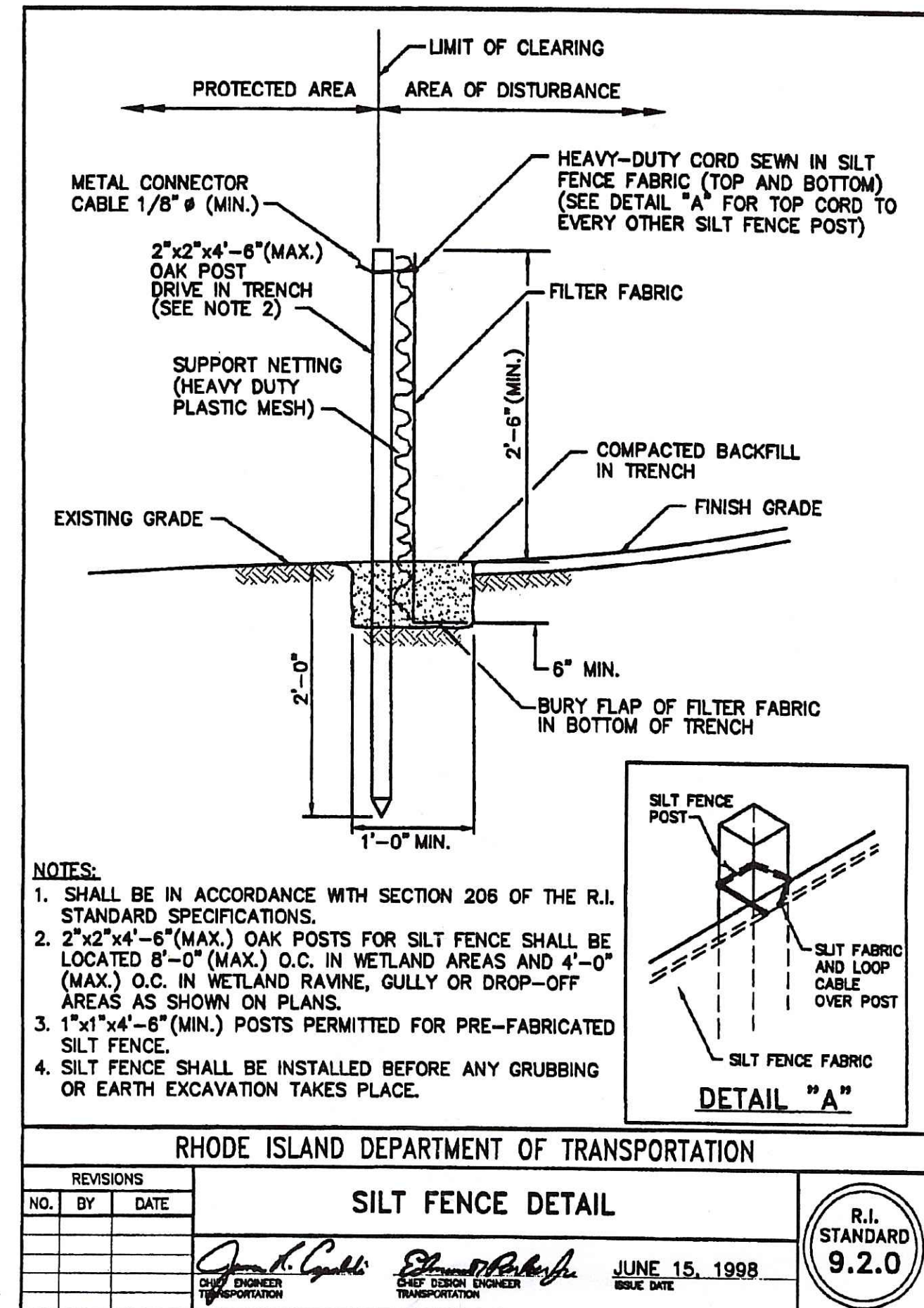
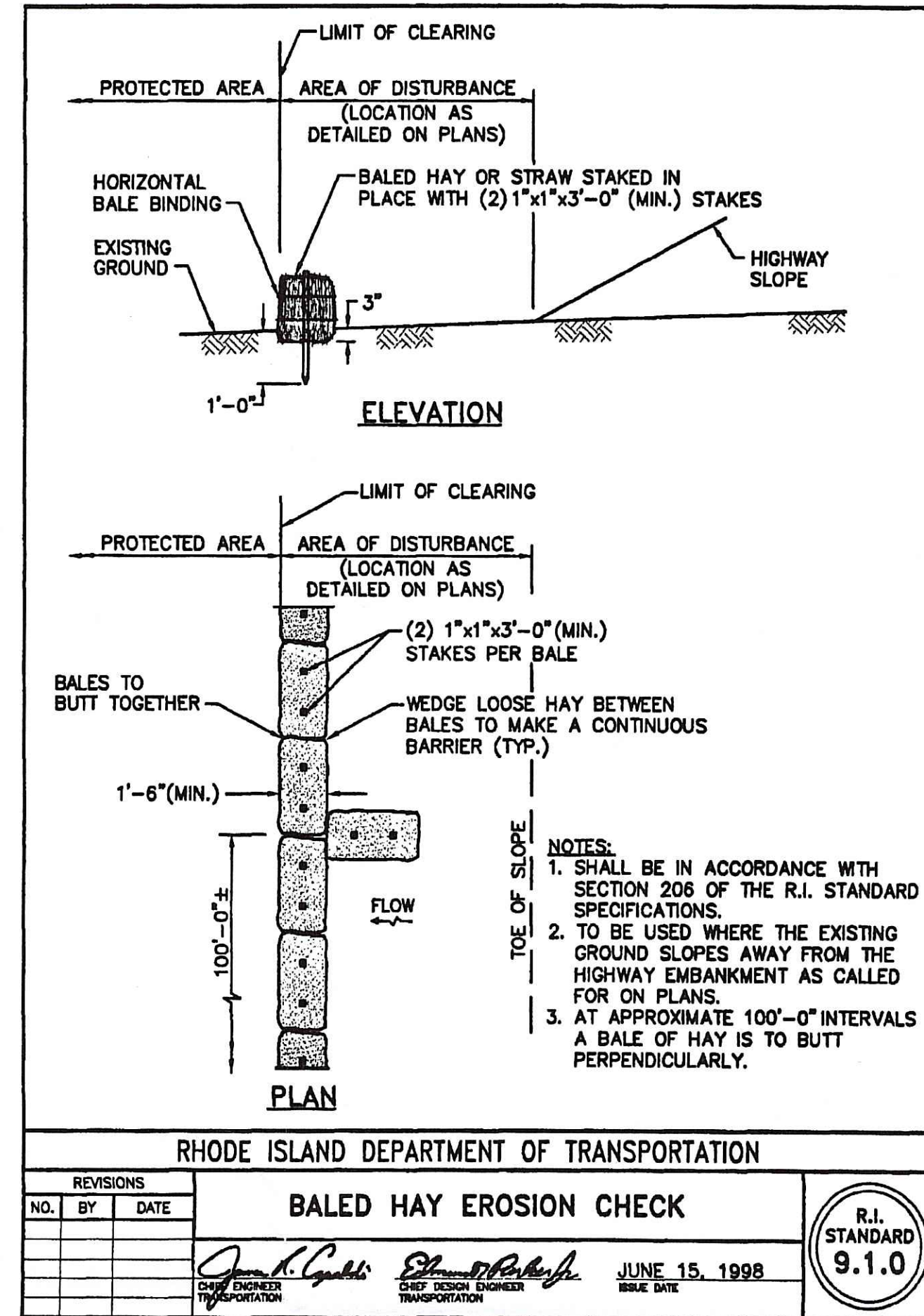
NOTES:
1. CONTROL PANEL MUST INCLUDE AN EMERGENCY RECEPTACLE FOR GENERATOR CONNECTION

ENVIRONMENTAL MANAGEMENT
OFFICE OF WATER RESOURCES
FRESHWATER WETLANDS PROGRAM
APPROVED WITH CONDITIONS
AS SPECIFIED IN THE LETTER OF APPROVAL
DATED APR 26 2011 FILE # 11-0042
NO CHANGES ALLOWED WITHOUT PRIOR APPROVAL
APPROVED PLANS MUST BE AT CONSTRUCTION SITE

Nancy L. Freeman

MARK T. CONBOY
No. 5783
Mark T. Conboy
REGISTERED PROFESSIONAL ENGINEER CIVIL
3-16-11

DATE	PROJECT NO.	DETAIL SHEET
3/09/11	07-073	
SCALE	DRAWING NO.	513 CONNECTICUT AVENUE NEW SHOREHAM, R.I.
AS NOTED		
REVISIONS	DESIGNED BY	FOR PHOEBE SALFEN A.P. 6 LOT 20
	M.T.C.	
	DRAWN BY	DAVID D. GARDNER & ASSOCIATES, INC.
	M.T.C.	
	CHECKED BY	200 METRO CENTER BOULEVARD WARWICK, RHODE ISLAND 02886 (401) 738-3200 FAX (401) 739-4740
	D.D.G.	
SHEET NO.		ENGINEERS • SURVEYORS • PLANNERS
2		
SHEET 2 OF 3		



REVISIONS			BALED HAY EROSION CHECK		R.I. STANDARD 9.1.0
NO.	BY	DATE	DESIGNED BY	DATE	
			<i>James H. Conboy</i>	JUNE 15, 1998	

REVISIONS			SILT FENCE DETAIL		R.I. STANDARD 9.2.0
NO.	BY	DATE	DESIGNED BY	DATE	
			<i>James H. Conboy</i>	JUNE 15, 1998	

REVISIONS			BALED HAY DITCH AND SWALE EROSION CHECK		R.I. STANDARD 9.4.0
NO.	BY	DATE	DESIGNED BY	DATE	
			<i>James H. Conboy</i>	JUNE 15, 1998	

SOIL STABILIZATION & PLANTING PROGRAM

ACCEPTABLE PLANTING MATERIALS:
LOAM - THE MATERIAL TO BE FURNISHED SHALL CONSIST OF LOOSE, FRIABLE, SANDY LOAM OR LOAM TOPSOIL FREE OF A MIXTURE OF SUBSOIL, REFUSE, STUMPS, ROOTS, ROCKS, BRUSH, WEEDS AND OTHER MATERIAL WHICH WILL PREVENT THE FORMATION OF A SUITABLE SEED BED.

SEED MIXTURES - ALL LEGUME SEED SHALL BE INOCULATED WITHIN 24 HOURS BEFORE MIXING AND PLANTING WITH THE APPROPRIATE INOCULUM FOR EACH VARIETY. ALL INOCULA SHALL BE FRESH AND SHALL BE USED WITHIN THE DATE LIMIT PRESCRIBED BY THE MANUFACTURER.

FOR RELATIVELY FLAT SLOPES:		
MIX		% BY WEIGHT
RED FESCUE - CHEWING'S PENNLAWN OR CREEPING		70
KENTUCKY BLUEGRASS		15
COLONIAL BENTGRASS - ASTORIA OR EXETER		5
PERENNIAL RYEGRASS		10
- SEEDING RATE = 100 LBS. PER ACRE		
FOR STEEP SLOPES 3:1 OR GREATER		
MIX		% BY WEIGHT
RED FESCUE - PENNLAWN OR CREEPING		75
PERENNIAL RYEGRASS		5
COLONIAL BENTGRASS - ASTORIA OR EXETER		5
BIRDSFOOT TREFOIL - EMPIRE		15
- SEEDING RATE: 100 LBS. PER ACRE		

THE ACCEPTED PLANTING SEASON SHALL BE BETWEEN APRIL 1ST AND OCTOBER 15TH. CONTRACTOR SHOULD COORDINATE ON ALL DISTURBED AREAS. THE CONTRACTOR SHALL PROVIDE A MINIMUM OF FOUR (4) INCHES OF LOAM ON AREAS UP TO 10% IN GRADE. ALL AREAS OVER 10% SHALL RECEIVE A MINIMUM OF SIX (6) INCHES.

REFERENCE IS HEREBY MADE TO THE RHODE ISLAND SOIL EROSION AND SEDIMENT CONTROL HANDBOOK PUBLISHED BY THE SOIL CONSERVATION SERVICE. THE GUIDELINES SHOWN THEREIN SHOULD BE INCORPORATED INTO THE CONSTRUCTION PRACTICES ON SITE.

EROSION CONTROL PROGRAM

PRIOR TO START OF CONSTRUCTION, HAYBALES, SILT FENCES AND ALL OTHER SPECIFIED EROSION CONTROL FENCES SHALL BE IN PLACE.

CRITICAL AREAS SUCH AS WETLAND AREAS, SLOPES AND STREAMS SHALL BE PROTECTED AS PER PLAN AND, IN THE PRESENCE OF WETLANDS, THE CONDITIONS OF THE ASSENT ORDER SHALL BE ADHERED TO.

THE CONTRACTOR SHALL BE REQUIRED TO ESTABLISH AND FULLY MAINTAIN ALL REQUIRED EROSION AND SEDIMENTATION CONTROLS.

SEDIMENTATION CONTROL PROGRAM

ALL EXPOSED SLOPES, INCLUDING STOCKPILES OF MATERIAL, SHALL RECEIVE TEMPORARY SEDIMENTATION AND EROSION CONTROLS. THIS WILL INCLUDE LOAMING AND SEEDING, MULCHING, HAYMATS, ETC., TO STABILIZE THE AREA.

ALL DRAINAGE STRUCTURES SHALL BE SURROUNDED BY HAYBALES TO PREVENT INFILTRATION OF SEDIMENTS.

DRYWELLS, GALLEYS, FLOW DIFFUSERS, AND OTHER LEACHING FACILITIES SHALL BE THOROUGHLY PROTECTED FROM SEDIMENTATION DURING CONSTRUCTION. IF SEDIMENTS ENTER FACILITIES DURING CONSTRUCTION, THE STRUCTURES SHALL BE CLEARED AND, IF NECESSARY, REMOVED AND REINSTALLED WITH ALL EXPENSE TO BE BORNE BY CONTRACTOR.

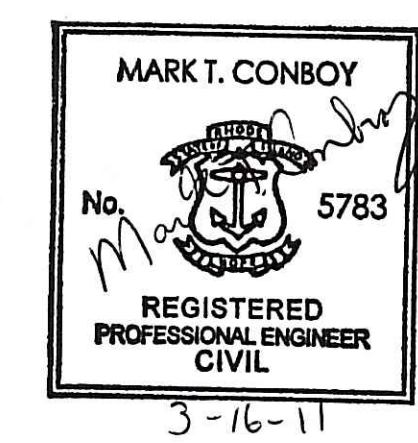
SHOULD SEDIMENTS ENTER A CRITICAL AREA, (WETLAND, BUFFER ZONE, ADJUTING PROPERTY) THE CONTRACTOR SHALL IMMEDIATELY CLEAN AND RESTORE THE EFFECTED AREA.

GENERAL NOTES:

1. IT SHALL BE THE CONTRACTOR'S SOLE RESPONSIBILITY TO OBTAIN ANY AND ALL PERMITS REQUIRED BY THE STATE AND THE MUNICIPALITY IN WHICH WORK IS BEING PERFORMED PRIOR TO START OF ANY WORK.
2. IT SHALL BE THE CONTRACTOR'S SOLE RESPONSIBILITY TO DOCUMENT EXISTING CONDITIONS OF SURROUNDING PROPERTIES AND TO MAINTAIN THE INTEGRITY OF THE SAME. ANY DAMAGE TO AND THE COST OF REPAIR OF UTILITIES, ROADWAYS, STRUCTURES AND SURROUNDING PROPERTY SHALL BE FULLY BORNE BY THE CONTRACTOR.
3. ALL WORKMANSHIP AND MATERIALS SHALL MEET OR EXCEED THE LATEST STANDARDS OF THE MUNICIPALITY, AND THE LATEST STATE STANDARDS AND SPECIFICATIONS PUBLISHED FOR ROAD AND BRIDGE CONSTRUCTION.
4. CONTRACTOR SHALL CONTACT ALL UTILITY COMPANIES, THE MUNICIPAL PUBLIC WORKS DEPARTMENT, FIRE DEPARTMENT AND THE DEPARTMENT OF TRANSPORTATION FOR VERIFICATION OF APPROVED LOCATIONS SHOWN HEREON PRIOR TO START OF CONSTRUCTION. IF ANY DISCREPANCIES ARE NOTED, THE CONTRACTOR SHALL CONTACT THIS ENGINEER IMMEDIATELY FOR A RESOLUTION.
5. THE LOCATION OF ALL EXISTING UTILITIES IS APPROXIMATE ONLY AND SHALL BE VERIFIED BY CONTRACTOR PRIOR TO START OF CONSTRUCTION.
6. CONTACT DIG-SAFE AND UTILITY COMPANIES FOR EXACT-ON-SITE LOCATION OF EXISTING UNDERGROUND UTILITIES AT LEAST FORTY-EIGHT (48) HOURS PRIOR TO START OF CONSTRUCTION.
7. CONTRACTOR SHALL OBTAIN REQUIRED INSPECTION SCHEDULE OF THE MUNICIPALITY. UTILITY COMPANIES AND ALL OTHER REQUIRED PARTIES AND SHALL STRICTLY ADHERE TO THOSE REQUIREMENTS.

DEPARTMENT OF ENVIRONMENTAL MANAGEMENT
OFFICE OF WATER RESOURCES
FRESHWATER WETLANDS PROGRAM
APPROVED WITH CONDITIONS
AS SPECIFIED IN THE LETTER OF APPROVAL
DATED APR 26 2011 FILE # 11-0042
NO CHANGES ALLOWED WITHOUT PRIOR APPROVAL
APPROVED PLANS MUST BE AT CONSTRUCTION SITE

Nancy L. Freeman



DATE 3/09/11	PROJECT NO. 07-073	<p align="center">DETAIL SHEET</p> <p align="center">513 CONNECTICUT AVENUE NEW SHOREHAM, R.I.</p> <p align="center">FOR PHOEBE SALTEN A.P. 6 LOT 20</p>
SCALE AS NOTED	DRAWING NO. 07073SAN	
DESIGNED BY M.T.C.	DRAWN BY M.T.C.	
CHECKED BY D.D.G.		
SHEET NO. 3		<p align="center">DAVID D. GARDNER & ASSOCIATES, INC.</p> <p align="center">200 METRO CENTER BOULEVARD WARWICK, RHODE ISLAND 02886 (401) 738-3200 / FAX:(401) 739-4740</p> <p align="center">ENGINEERS • SURVEYORS • PLANNERS</p>