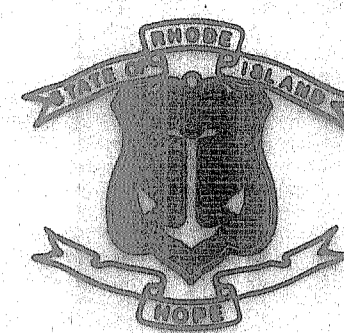


FED. ROAD DIV. NO.	STATE	FEDERAL AID PROJECT NO.	FISCAL YEAR	SHEET NO.	TOTAL SHEETS
	RI		2011	1	3

STATE OF RHODE ISLAND



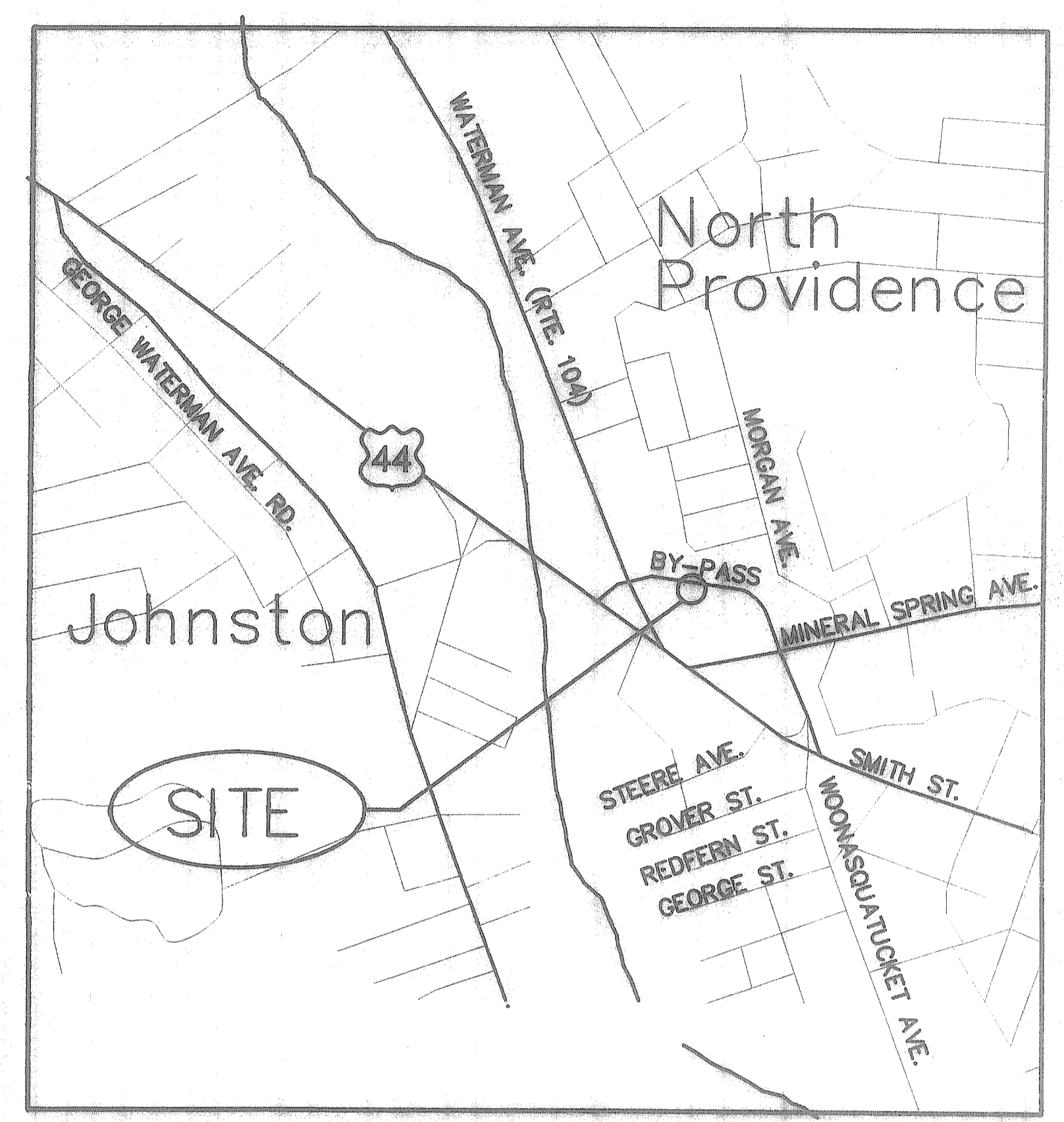
DEPARTMENT OF TRANSPORTATION

PLAN, PROFILE AND SECTIONS OF PROPOSED STATE HIGHWAY

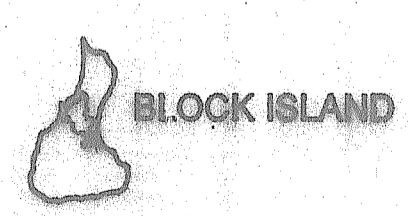
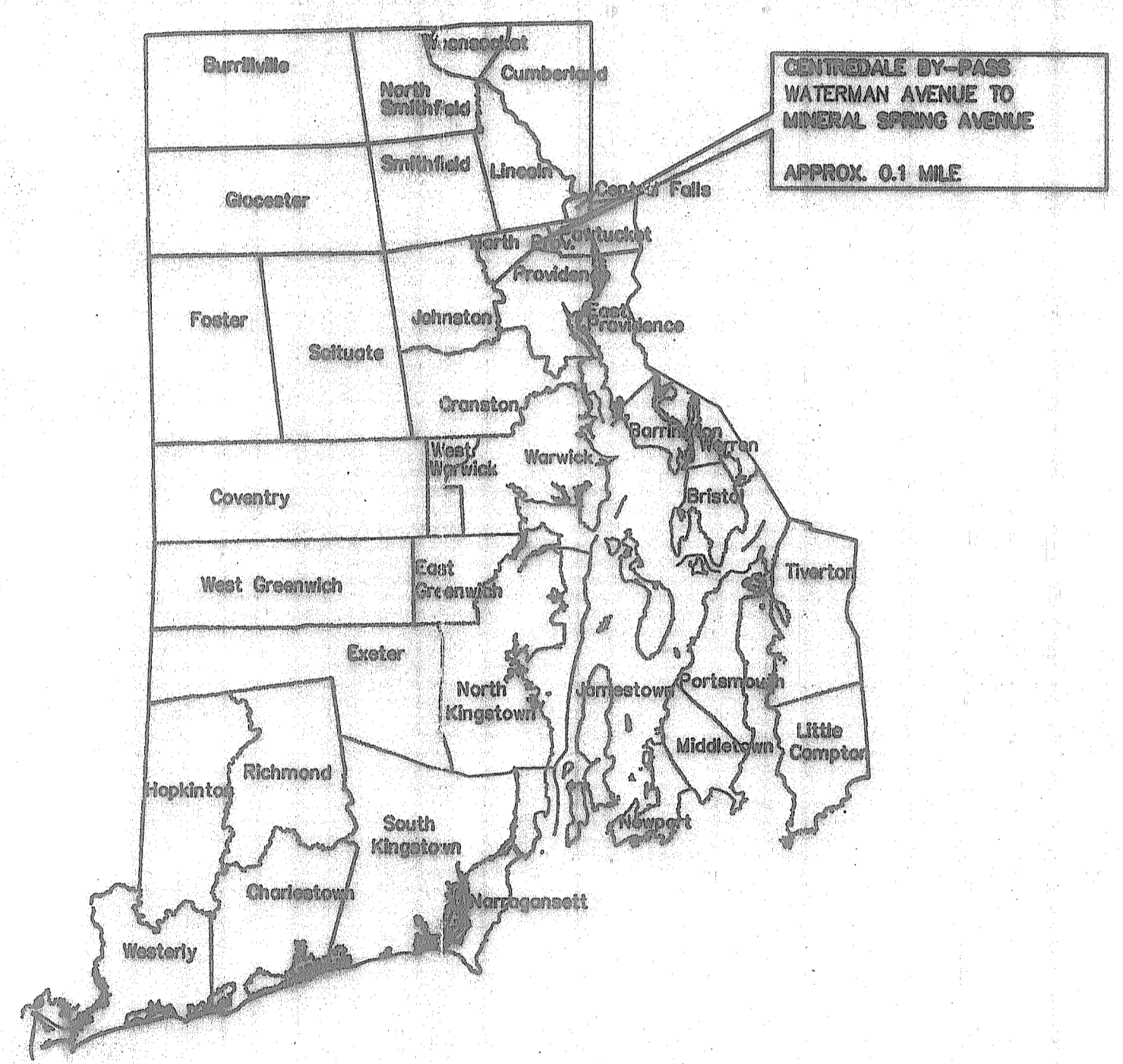
STATEWIDE DRAINAGE IMPROVEMENTS CENTREDALE BY-PASS

CITY OF NORTH PROVIDENCE
COUNTY OF PROVIDENCE

R.I. CONTRACT NO. 2011-CH-XXX F.A. PROJECT NO. STP-DRNG(XXX)



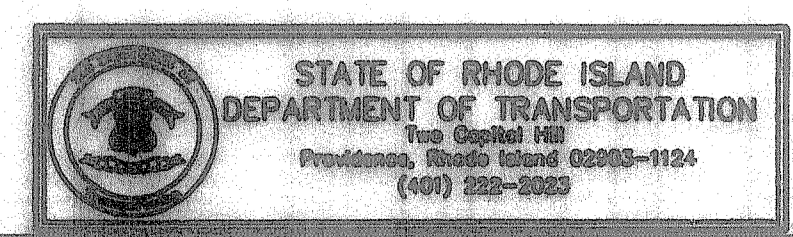
LOCUS MAP
N.T.S.



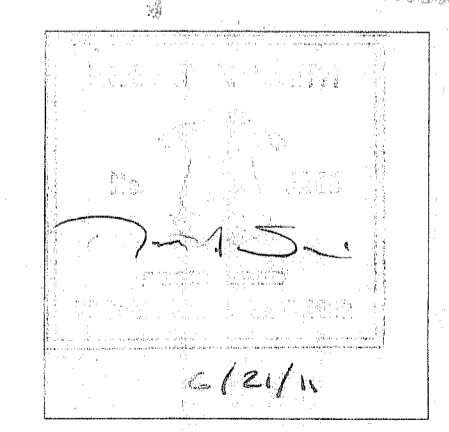
SITE LOCATION MAP
N.T.S.

SCALES OF DRAWINGS
Plans 1 inch = 20 feet OR AS NOTED
Profiles 1 inch = 4 feet Vertical OR AS NOTED
Cross Sections 1 inch = 4 feet Vertical OR AS NOTED

BASE OF LEVELS
NGVD 29



DEPARTMENT OF ENVIRONMENTAL MANAGEMENT
OFFICE OF WATER RESOURCES
FRESHWATER WETLANDS PROGRAM
REVIEWED SITE PLAN APPLICATION NO. 11-0098
DATED JUL 11 2011
SEE LETTER OF SAME DATE.



R.I.D.E.M. SUBMISSION

R.I. DEPARTMENT OF TRANSPORTATION	
APPROVED	DATE
DEPUTY CHIEF ENGINEER	DATE
CHIEF ENGINEER	DATE
DIRECTOR	DATE

DEPARTMENT OF TRANSPORTATION FEDERAL HIGHWAY ADMINISTRATION	
APPROVED	DATE
DIVISION ADMINISTRATOR	DATE

Contract Number 2011-CH-XXX
Number of Sheet 1
Total Sheets 3

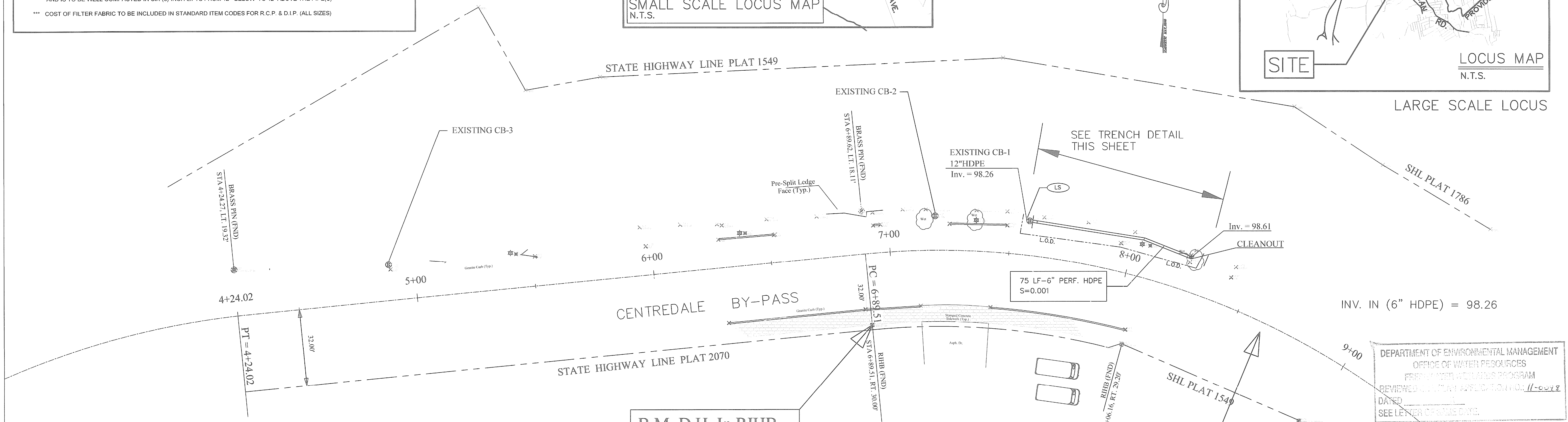
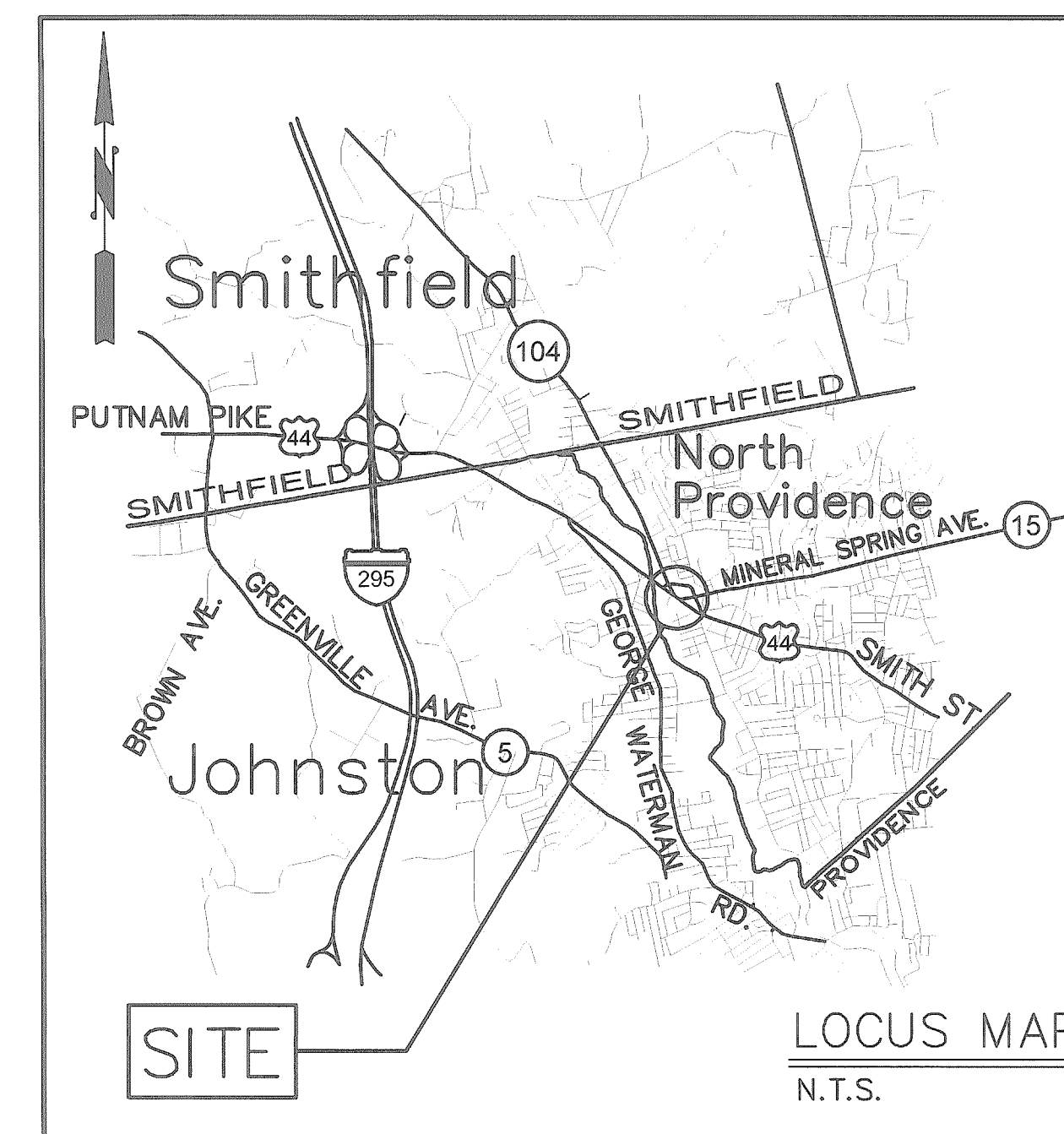
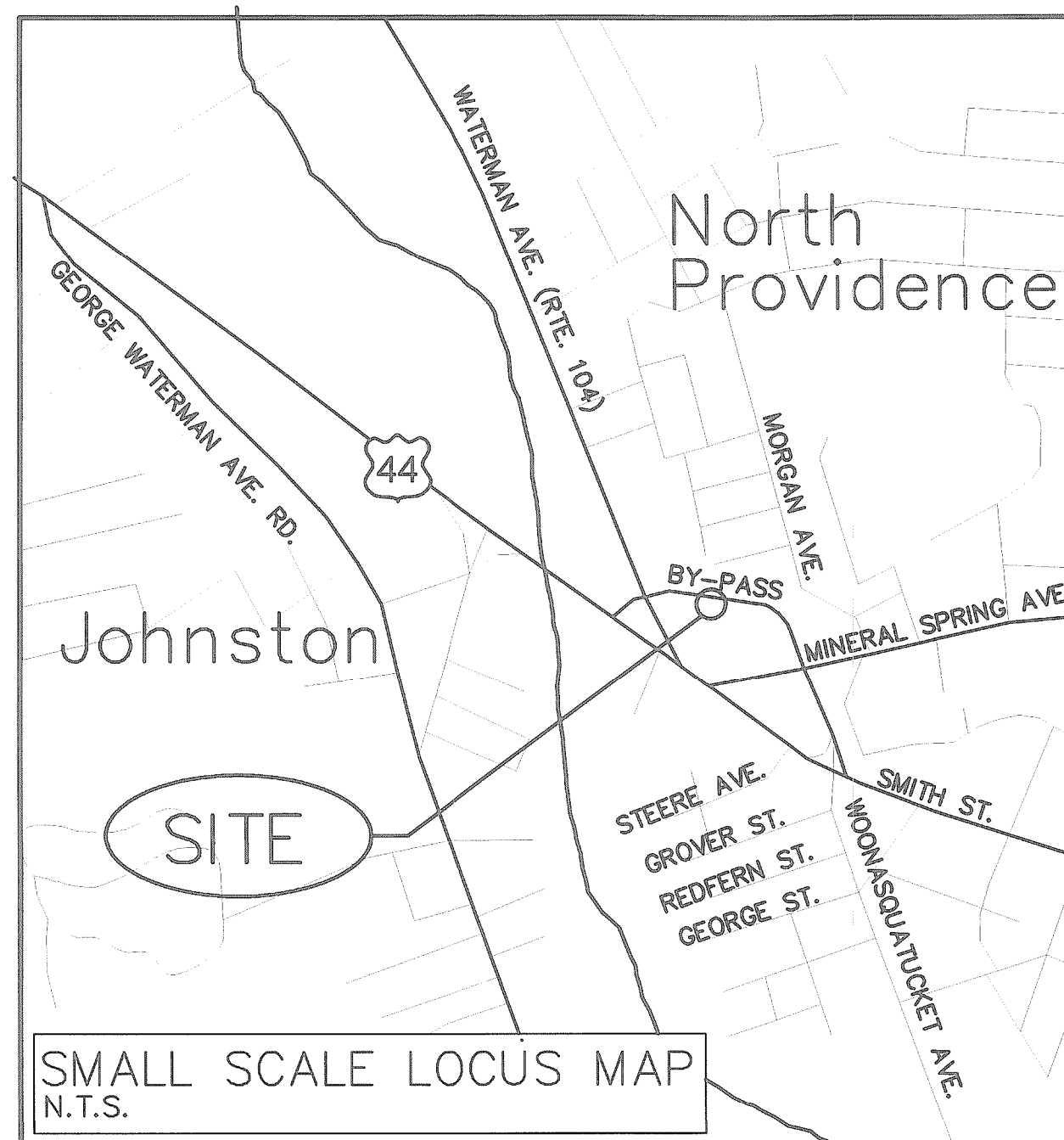
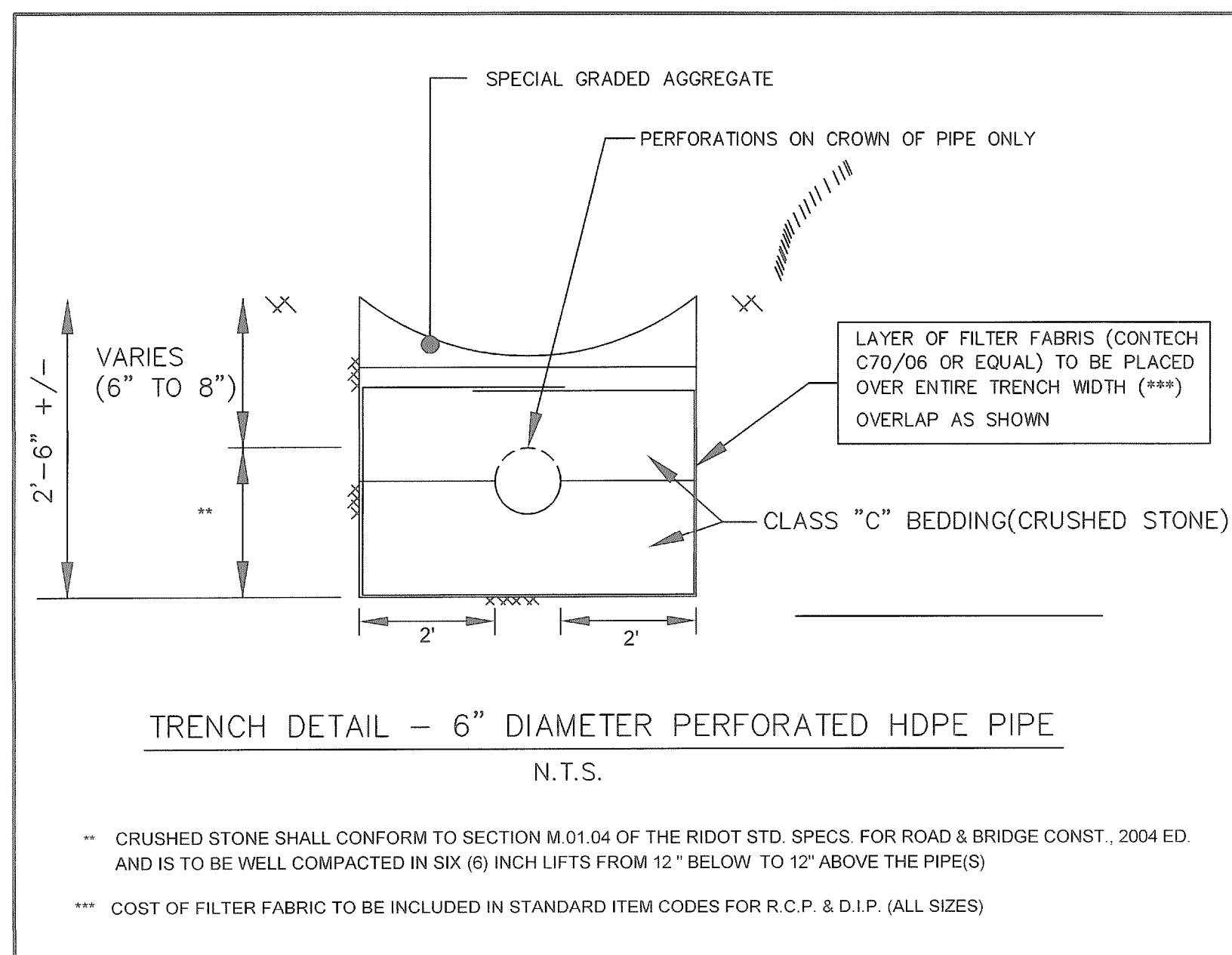
INDEX

SHEET NO.	DESCRIPTION
1	COVER SHEET
2	GENERAL PLAN
3	NOTES/LEGEND

R.I. STANDARD SPECIFICATIONS AND STANDARD DETAILS.
SPECIFICATIONS TO GOVERN THIS PROJECT ARE THE R.I. STANDARD SPECIFICATIONS FOR ROAD AND BRIDGE CONSTRUCTION, 2004 EDITION, AND THE STATE AND FEDERAL SPECIAL PROVISIONS INCLUDED IN THE CONTRACT DOCUMENTS, STANDARD DETAILS FOR THIS PROJECT ARE R.I. STANDARD DETAILS, 1998 EDITION, WITH ALL REVISIONS.

C:\LAND PROJECTS\FORREST HILLS\EXETER\mg\Forest Hills-March2010.dwg 9/15/2007 14:34:48 PM EDI

FED. ROAD DIV. NO.	STATE	FEDERAL AID PROJECT NO.	FISCAL YEAR	SHEET NO.	TOTAL SHEETS
	R.I.		2011	2	3

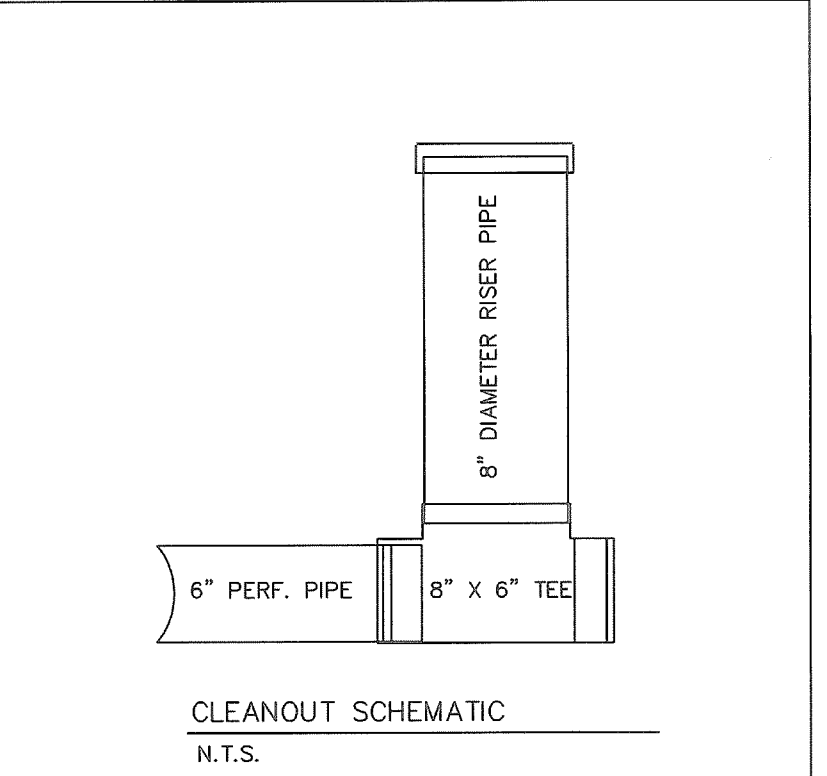


B.M. D.H. In RIHB
Elev. 100.00 Assumed

DEPARTMENT OF ENVIRONMENTAL MANAGEMENT
OFFICE OF WATER RESOURCES
FRESHWATER WILDLIFE PROGRAM
REVIEWED FOR ENVIRONMENTAL APPLICATION NO. 11-0017
DATE: _____
SEE LETTER OF SAME DATE.

R.I.D.E.M. SUBMISSION

Centerline Curve Data
Δ = 32°-36'-22"
R = 341.906
T = 100.00
L = 194.573



Centerline Curve Data
Δ = 60°-16'-01"
R = 320.000
T = 185.747
L = 336.591

REVISION			RHODE ISLAND DEPARTMENT OF TRANSPORTATION	
NO.	DATE	BY	STATEWIDE DRAINAGE IMPROVEMENTS	
			CENTREDALE BYPASS	
			NORTH PROVIDENCE	
			RHODE ISLAND	
			GENERAL PLAN NO. 1	
			CHECKED BY: M.J.D. DATE: 06-04-10 SCALE: 1"=20'	

STATE OF RHODE ISLAND
DEPARTMENT OF TRANSPORTATION
Two Capitol Hill
Providence, Rhode Island 02903-1124
(401) 222-2023

S:\Design\Highways\Rhode\LAND PROJECTS\Centredale By-Pass.dwg 4/17/2011 10:51:38 AM EDT

