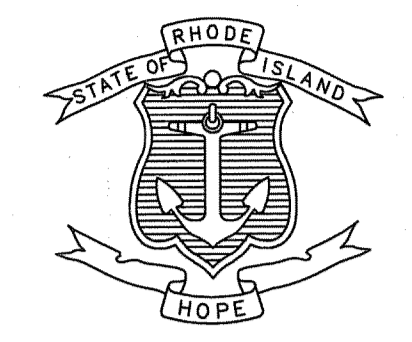


FED. ROAD DIV. NO.	STATE	FEDERAL AID PROJECT NO.	FISCAL YEAR	SHEET NO.	TOTAL SHEETS
1	RI		2011	1	16

INDEX

SHEET NO.	DESCRIPTION
1	COVER SHEET
2	STANDARD PLAN SYMBOLS & STANDARD LEGEND
3	STANDARD NOTES - 1
4	STANDARD NOTES - 2
5	JOB SPECIFIC PLAN SYMBOLS, LEGEND, & NOTES
6-7	GENERAL PLAN NOS. 1-2
8-9	GRADING, DRAINAGE & UTILITY PLAN NOS. 1-2
10-11	SIGNING & STRIPING PLAN NOS. 1-2
12-13	LANDSCAPE PLAN NOS. 1-2
14	LANDSCAPE DETAILS NO. 1
15	MISCELLANEOUS DETAILS SHEET NO. 1
16	MISCELLANEOUS DETAILS SHEET NO. 2

STATE OF RHODE ISLAND



DEPARTMENT OF TRANSPORTATION

PLANS OF PROPOSED STATE HIGHWAY

IMPROVEMENTS TO DIVISION STREET (R.I. 401)

FROM SOUTH COUNTY TRAIL (R.I. 2) TO 1,320 FEET WEST

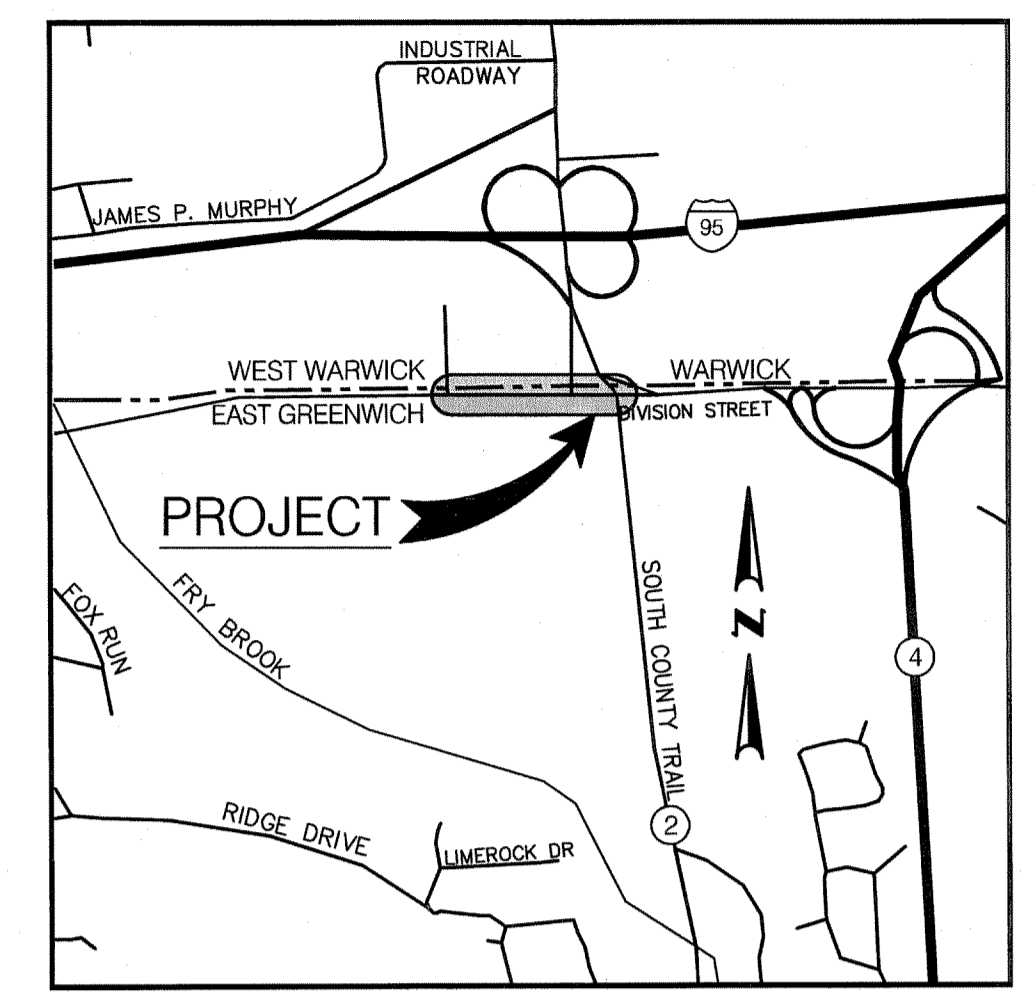
TOWN OF EAST GREENWICH AND WEST WARWICK
COUNTY OF KENT

R.I. CONTRACT NO. F.A. PROJECT NO.

PAVEMENT STRUCTURE

- 2 - INCH BITUMINOUS CONCRETE SURFACE COURSE, CLASS I-1
- 2 - INCH BITUMINOUS CONCRETE BASE COURSE
- 12 - INCH GRAVEL BORROW SUBBASE COURSE

0.25 MILES



LOCATION MAP
NOT TO SCALE

DIVISION STREET	
DESIGN	DESIGNATION
2010 AADT	8,500
2030 AADT	10,600
D	55%
K	10%
T	
DDHV	630
DHV	1,200
DESIGN SPEED	40 MPH

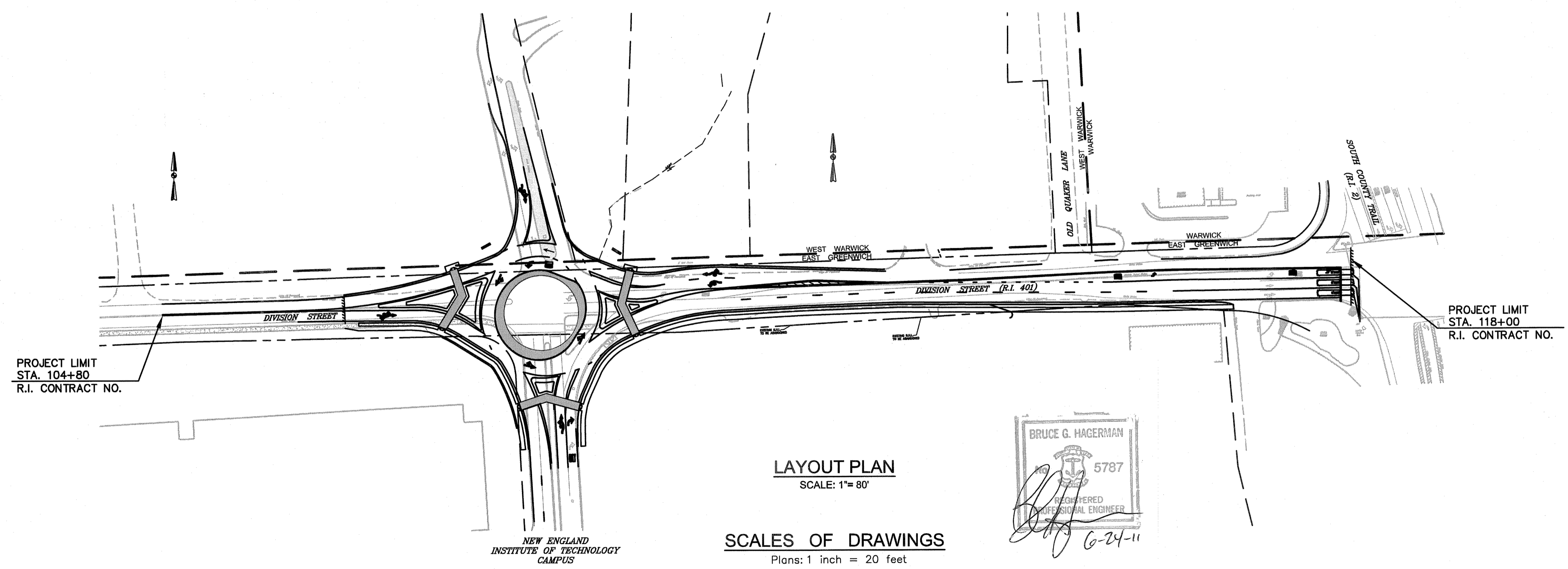
HURRICANE EVACUATION ROUTE

This project includes work on a designated Hurricane Evacuation and Diversionary Route as follows:
- Division Road

DEPARTMENT OF ENVIRONMENTAL MANAGEMENT
OFFICE OF WATER RESOURCES
FRESHWATER WETLANDS PROGRAM
APPROVED WITH CONDITIONS
AS SPECIFIED IN THE LETTER OF APPROVAL
DATED 11-01-07 FILE # SEP 09 2011
NO CHANGES ALLOWED WITHOUT PRIOR APPROVAL
APPROVED PLANS MUST BE AT CONSTRUCTION SITE

Environmental Management
JUN 29 2011
Office of Water Resources

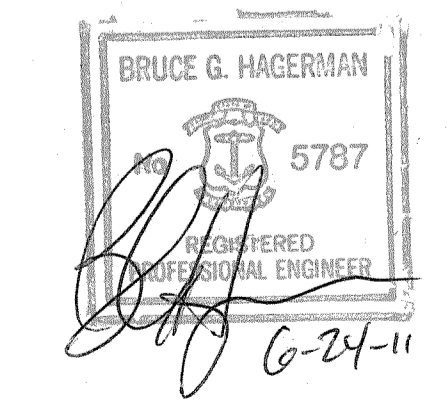
R.I.D.E.M. SUBMISSION
JUNE 24, 2011



LAYOUT PLAN
SCALE: 1" = 80'

SCALES OF DRAWINGS
Plans: 1 inch = 20 feet

BASE OF LEVELS
NGVD 29



CROSSMAN ENGINEERING
a division of Crossman Corporation
151 Centerville Road | Warwick, Rhode Island 02886

Contract Number _____
Number of Sheet 1
Total Sheets 16

R.I. DEPARTMENT OF TRANSPORTATION

APPROVED _____

DEPUTY CHIEF ENGINEER _____ DATE _____

APPROVED _____

CHIEF ENGINEER _____ DATE _____

APPROVED _____

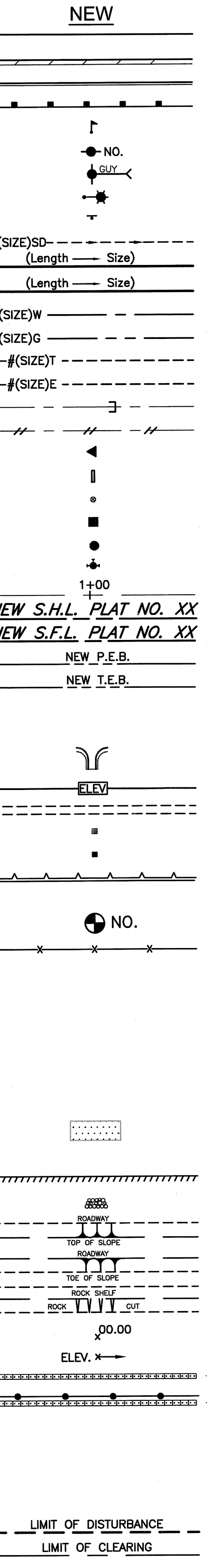
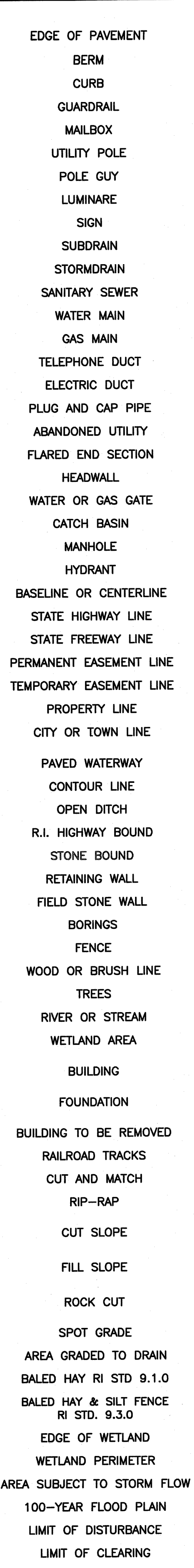
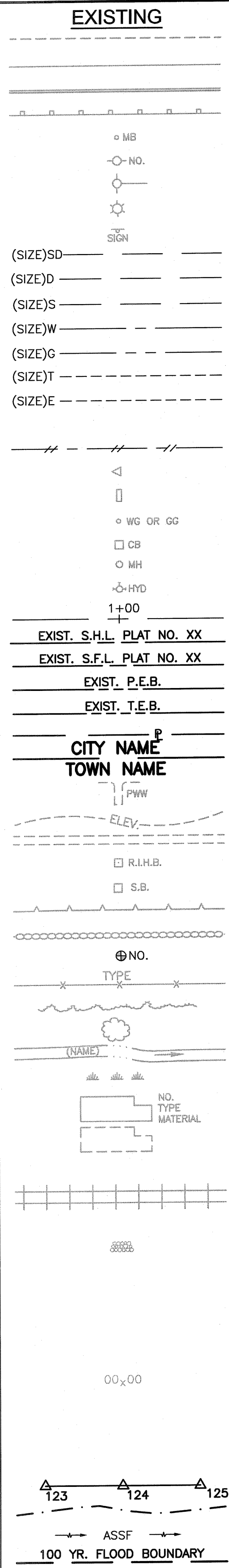
DIRECTOR _____ DATE _____

DEPARTMENT OF TRANSPORTATION
FEDERAL HIGHWAY ADMINISTRATION

APPROVED _____

DIVISION ADMINISTRATOR _____ DATE _____

R.I. STANDARD SPECIFICATIONS AND STANDARD DETAILS
SPECIFICATIONS TO GOVERN THIS PROJECT ARE THE R.I. STANDARD SPECIFICATIONS FOR ROAD AND BRIDGE CONSTRUCTION, 2004 EDITION, WITH ALL REVISIONS, AND THE STATE AND FEDERAL SPECIAL PROVISIONS INCLUDED IN THE CONTRACT DOCUMENTS. STANDARD DETAILS FOR THIS PROJECT ARE R.I. STANDARD DETAILS, 1998 EDITION, WITH ALL REVISIONS.



1.1.0	UNDERDRAIN	7.4.2	GRANITE TRANSITION CURB (VERTICAL FACE TO SLOPE FACE)	AB	ADJUST CATCH BASIN TO GRADE
1.3.0	CONCRETE CONNECTING COLLAR	7.5.0	BITUMINOUS CONCRETE LIP CURB	ABM	ADJUST CATCH BASIN TO MANHOLE
2.1.0	CONCRETE HEADWALLS FOR PIPE CULVERTS	7.5.1A	BITUMINOUS BERM (CONSTRUCTION METHOD A)	AC	ADJUST CURB STOP TO GRADE
2.2.0	STANDARD HEADWALLS FOR MULTIPLE 3'-6" TO 7'-0" PIPE CULVERTS	7.5.1B	BITUMINOUS BERM (CONSTRUCTION METHOD B)	AD	ADJUST DRAINAGE MANHOLE TO GRADE
2.3.0 (DIA.)	PRECAST CONCRETE FLARED END SECTION	7.6.0	CURB SETTING DETAIL	AE	ADJUST ELECTRIC MANHOLE TO GRADE
3.2.0	BRICK/SOLID BLOCK 4'-0" ROUND MANHOLE	8.2.0	BITUMINOUS CONCRETE DITCH	AFC	ADJUST FRAME AND COVER TO GRADE
3.2.1 (DIA.)	BRICK/SOLID BLOCK 5'-0" OR 6'-0" ROUND MANHOLE	8.3.0	RIP-RAP DITCH	AFG	ADJUST FRAME AND GRATE TO GRADE
3.3.0	BRICK/SOLID BLOCK TYPE "D" SQUARE CATCH BASIN	8.4.0	PAVED WATERWAY	AG	ADJUST GAS GATE BOX TO GRADE
3.3.2	BRICK/SOLID BLOCK TYPE "F" SQUARE CATCH BASIN	9.1.0	BALED HAY EROSION CHECK	AHH	ADJUST HANDHOLE TO GRADE
3.3.3	SOLID BLOCK FLUSH SQUARE CATCH BASIN	9.2.0	SILT FENCE DETAIL	AS	ADJUST SANITARY SEWER MANHOLE TO GRADE
3.4.0	BRICK/SOLID BLOCK TYPE "D" ROUND CATCH BASIN	9.3.0	BALED HAY DITCH EROSION CHECK AND SILT FENCE COMBINED	AT	ADJUST TELEPHONE MANHOLE TO GRADE
3.4.1	BRICK/SOLID BLOCK ROUND CATCH BASIN WITH GUTTER INLET	9.4.0	BALED HAY DITCH AND SWALE EROSION CHECK	AW	ADJUST WATER GATE BOX TO GRADE
3.4.2	BRICK/SOLID BLOCK TYPE "F" ROUND CATCH BASIN	9.5.0	LOG AND HAY CHECK DAM	BCD	BITUMINOUS CONCRETE DRIVEWAY 3" BITUMINOUS CONCRETE TYPE 1-2 8" GRAVEL BORROW SUBBASE COURSE
3.4.3	BRICK/SOLID BLOCK TYPE "R" CATCH BASIN	9.7.0	DEWATERING BASIN	BPS	BUILD NEW STRUCTURE OVER EXISTING PIPE
3.4.4	SOLID BLOCK FLUSH ROUND CATCH BASIN	9.8.0	BALED HAY CATCH BASIN INLET PROTECTION	CCB	CLEAN CATCH BASIN
3.4.5 (DIA.)	BRICK/SOLID BLOCK 5'-0" OR 6'-0" ROUND CATCH BASIN	9.9.0	CONSTRUCTION ACCESS	CCP	CUT AND CAP PIPE WITH RESTRAINT (ALL SIZES)
3.5.0	SOLID BLOCK SHALLOW TYPE "F" SQUARE CATCH BASIN	10.1.0	WET STONE MASONRY RETAINING WALL	CFP	CLEAN AND FLUSH PIPE
3.5.1 (SIZE)	SOLID BLOCK SHALLOW 5'-0" OR 6'-0" SQUARE CATCH BASIN	10.2.0	RUBBLE MASONRY WALL	CG	CLEARING AND GRUBBING
3.6.0	BRICK/SOLID BLOCK DROP INLET	10.3.0	CONCRETE RETAINING WALL	CMH	CLEAN MANHOLE
3.7.0 (DIA.)	BRICK/SOLID BLOCK ROUND MANHOLE OR CATCH BASIN GREATER THAN 12'-0"	10.4.0	STONE MASONRY STEPS	CP (DEPTH)	COLD PLANE
4.2.0	PRECAST 4'-0" ROUND MANHOLE	14.1.0	CONCRETE HIGHWAY BOUND	CPP	CUT AND PLUG PIPE (ALL TYPES, ALL SIZES)
4.2.1	PRECAST 5'-0" ROUND MANHOLE	15.1.0	POST AND MOUNTINGS FOR RURAL MAILBOX	DB	REMOVE AND DISPOSE BITUMINOUS CURB
4.2.2	PRECAST 6'-0" ROUND MANHOLE	15.2.0 (NO.)	POST AND MULTIPLE MOUNTINGS FOR RURAL MAILBOXES	DC	REMOVE AND DISPOSE CONCRETE CURB
4.3.0 (SIZE)	PRECAST 4'-0" OR 6'-0" SQUARE MANHOLE OR CATCH BASIN	18.2.0	PRECAST TYPE "A" HANDHOLE	DCB	REMOVE AND DISPOSE CATCH BASIN
4.4.0 (DIA.)	PRECAST 4'-0", 5'-0", OR 6'-0" ROUND CATCH BASIN	18.2.2	HEAVY DUTY TYPE "H" HANDHOLE	DDI	REMOVE AND DISPOSE DROP INLET
4.5.0	PRECAST CONCRETE DROP INLET	18.3.0	ALUMINUM LIGHTING STANDARDS	DF	REMOVE AND DISPOSE FENCE
4.5.1	PRECAST CONCRETE DROP INLET LATERAL OUTLET	20.2.0	BI-DIRECTIONAL CONTROL DEVICE	DFC	REMOVE AND DISPOSE FRAME AND COVER
4.5.2	PRECAST CONCRETE DROP INLET LONGITUDINAL OUTLET	24.6.1	STREET SIGN MOUNTING DETAIL	DFE	REMOVE AND DISPOSE FLARED END SECTION
5.3.0	CATCH BASIN AND MANHOLE STEP	26.2.0	POLYETHYLENE DRUM WITH MARKINGS	DFG	REMOVE AND DISPOSE FRAME AND GRATE
5.4.0	CONCRETE COLLARS	26.3.0	PVC PLASTIC PIPE TYPE III BARRICADE	DFH	REMOVE AND DISPOSE FIRE HYDRANT
6.1.0	LIGHT-DUTY SQUARE FRAME AND ROUND COVER	31.1.0	CHAIN LINK FENCE 3'-0" TO 4'-0"	DFP	REMOVE AND DISPOSE FLEXIBLE PAVEMENT
6.1.1	HEAVY DUTY SQUARE FRAME AND ROUND COVER	31.2.0	CHAIN LINK FENCE 5'-0" TO 6'-0"	DG	REMOVE AND DISPOSE GUARDRAIL
6.2.0	LIGHT-DUTY ROUND FRAME AND COVER	31.2.1	CHAIN LINK FENCE 5'-0" TO 6'-0" INTERMEDIATE POST	DH	REMOVE AND DISPOSE HEADWALL
6.2.1	HEAVY-DUTY ROUND FRAME AND COVER	31.3.0	WOVEN WIRE RIGHT-OF-WAY FENCE (STEEL POST)	DHB	REMOVE AND DISPOSE HIGHWAY BOUND
6.3.0	SQUARE FRAME AND GRATE	34.1.0	TYPICAL GUARDRAIL INSTALLATION	DHH	REMOVE AND DISPOSE HANDHOLE
6.3.1	SQUARE FRAME AND GRATE	34.2.0	STEEL BEAM GUARDRAIL	DL	REMOVE AND DISPOSE LIGHT AND FOUNDATION
6.3.2	SQUARE FRAME AND GRATE (BICYCLE SAFE)	34.2.1	STEEL BEAM GUARDRAIL DETAILS	DMB	REMOVE AND DISPOSE MEDIAN BARRIER
6.3.3	HIGH CAPACITY FRAME AND GRATE	34.2.2	STEEL BEAM GUARDRAIL DOUBLE FACED ASSEMBLY	DMH	REMOVE AND DISPOSE MANHOLE
6.3.4	HIGH CAPACITY FRAME AND GRATE (BICYCLE SAFE)	34.2.3	STEEL BEAM GUARDRAIL FIXTURES	DMM	REMOVE AND DISPOSE MEDIAN MARKER
6.4.0	ROUND FRAME AND GRATE	34.2.5	STEEL BEAM GUARDRAIL REFLECTORIZED TRIANGULAR DELINEATOR	DOW	REMOVE AND DISPOSE OBSERVATION WELL
7.1.0S	PRECAST CONCRETE CURB (STRAIGHT)	34.3.1	GUARDRAIL END SECTION	DP	REMOVE AND DISPOSE PIPE
7.1.0C	PRECAST CONCRETE CURB (CIRCULAR)	34.3.2	TERMINAL END SECTION (SINGLE FACE)	DPB	REMOVE AND DISPOSE PAVEMENT AND RIGID BASE
7.1.1	3'-0" PRECAST CONCRETE TRANSITION CURB	34.3.3	ANCHORAGE DETAILS APPROACH END SECTION	DRB	REMOVE AND DISPOSE RIGID BASE
7.1.2	6'-0" PRECAST CONCRETE TRANSITION CURB	34.3.4	ANCHORAGE DETAILS TRAILING END SECTION	DS	REMOVE AND DISPOSE SIGN
7.1.4	PRECAST 2'-0" RADIUS CORNER	34.4.0	STEEL BACKED TIMBER GUARDRAIL	DSS	REMOVE AND DISPOSE TRAFFIC SIGNAL SYSTEM
7.1.5	PRECAST CONCRETE INLET STONE (FOR SQUARE CATCH BASIN)	34.4.1	STEEL BACKED TIMBER GUARDRAIL TERMINAL SECTION-TYPE 1	DSW	REMOVE AND DISPOSE SIDEWALK
7.1.6	PRECAST CONCRETE INLET STONE (FOR ROUND CATCH BASIN)	40.1.0	DOUBLE-FACED PRECAST MEDIAN BARRIER	DTD	REMOVE AND DISPOSE TELEPHONE DUCT BANKS
7.1.7	PRECAST CONCRETE APRON STONE (FOR SQUARE CATCH BASIN)	40.2.0	SINGLE-FACED PRECAST MEDIAN BARRIER	DUP	REMOVE AND DISPOSE UTILITY POLE
7.1.8	PRECAST CONCRETE APRON STONE (FOR ROUND CATCH BASIN)	40.2.1	SINGLE-FACED PRECAST MEDIAN BARRIER	DWW	REMOVE AND DISPOSE PAVED WATERWAY
7.2.0S	PRECAST CONCRETE SLOPED FACE CURB (STRAIGHT)	40.3.0	PRECAST MEDIAN BARRIER TRANSITION UNIT	FF	REMOVE AND DISPOSE PAVED WATERWAY
7.2.0C	PRECAST CONCRETE SLOPED FACE CURB (CIRCULAR)	40.5.0	PRECAST MEDIAN BARRIER FOR TEMPORARY TRAFFIC CONTROL	GET	FILTER FABRIC RIPRAP FLARED END UNDERLAYMENT
7.2.1	PRECAST CONCRETE SLOPED FACE TRANSITION CURB	43.1.0	CEMENT CONCRETE SIDEWALK	IA	FLARED GUARDRAIL END TREATMENT
7.2.2	PRECAST CONCRETE TRANSITION CURB (VERTICAL FACE TO SLOPED FACE)	43.2.0	BITUMINOUS CONCRETE SIDEWALK	IDL	IMPACT ATTENUATOR
7.3.0S	GRANITE CURB (STRAIGHT)	43.3.0	WHEELCHAIR RAMP	LOD	IMPERVIOUS DITCH LINER
7.3.0C	GRANITE CURB (CIRCULAR)	43.3.1	WHEELCHAIR RAMP FOR LIMITED RIGHT-OF-WAY AREAS	LOR	LIMIT OF DISTURBANCE
7.3.1	3'-0" GRANITE TRANSITION CURB	43.4.0	DRIVEWAY DEVELOPMENT FOR 3'-0" TRANSITION CURB	LS	LIMIT OF REGRADING
7.3.2	6'-0" GRANITE TRANSITION CURB	43.4.1	DRIVEWAY DEVELOPMENT FOR 6'-0" TRANSITION CURB		4" LOAM AND SEED
7.3.3	GRANITE WHEELCHAIR RAMP TRANSITION CURB	43.5.0	CEMENT CONCRETE DRIVEWAYS		
7.3.4	GRANITE 2'-0" RADIUS CORNER	48.1.0	DETECTABLE WARNING SYSTEM		
7.3.5	GRANITE INLET STONE (FOR SQUARE CATCH BASIN)	51.1.0	TREE PROTECTION DEVICE		
7.3.6	GRANITE INLET STONE (FOR ROUND CATCH BASIN)	51.1.1	DRIP LINE TREE PROTECTION DEVICE FOR EXISTING TREES		
7.3.7	GRANITE APRON STONE (FOR SQUARE CATCH BASIN)	51.2.0	SHRUB PROTECTION DEVICE		
7.3.8	GRANITE APRON STONE (FOR ROUND CATCH BASIN)	51.3.0	TREE WELL		
7.4.0	GRANITE SLOPED FACE CURB	51.4.0	TREE WALL		
7.4.1	GRANITE SLOPED FACE TRANSITION CURB				

ADJUST CATCH BASIN TO GRADE	ADJUST CATCH BASIN TO MANHOLE	ADJUST CURB STOP TO GRADE	ADJUST DRAINAGE MANHOLE TO GRADE	ADJUST ELECTRIC MANHOLE TO GRADE	ADJUST FRAME AND COVER TO GRADE	ADJUST FRAME AND GRATE TO GRADE	ADJUST GAS GATE BOX TO GRADE	ADJUST HANDHOLE TO GRADE	ADJUST SANITARY SEWER MANHOLE TO GRADE	ADJUST TELEPHONE MANHOLE TO GRADE	ADJUST WATER GATE BOX TO GRADE	BITUMINOUS CONCRETE DRIVEWAY 3" BITUMINOUS CONCRETE TYPE 1-2 8" GRAVEL BORROW SUBBASE COURSE	BUILD NEW STRUCTURE OVER EXISTING PIPE	CLEAN CATCH BASIN	CUT AND CAP PIPE WITH RESTRAINT (ALL SIZES)	CLEAN AND FLUSH PIPE	CLEARING AND GRUBBING	CLEAN MANHOLE	COLD PLANE	CUT AND PLUG PIPE (ALL TYPES, ALL SIZES)	REMOVE AND DISPOSE BITUMINOUS CURB	REMOVE AND DISPOSE CONCRETE CURB	REMOVE AND DISPOSE CATCH BASIN	REMOVE AND DISPOSE DROP INLET	REMOVE AND DISPOSE FENCE	REMOVE AND DISPOSE FRAME AND COVER	REMOVE AND DISPOSE FLARED END SECTION	REMOVE AND DISPOSE FRAME AND GRATE	REMOVE AND DISPOSE FIRE HYDRANT	REMOVE AND DISPOSE FLEXIBLE PAVEMENT	REMOVE AND DISPOSE GUARDRAIL	REMOVE AND DISPOSE HEADWALL	REMOVE AND DISPOSE HIGHWAY BOUND	REMOVE AND DISPOSE HANDHOLE	REMOVE AND DISPOSE LIGHT AND FOUNDATION	REMOVE AND DISPOSE MEDIAN BARRIER	REMOVE AND DISPOSE MANHOLE	REMOVE AND DISPOSE MEDIAN MARKER	REMOVE AND DISPOSE OBSERVATION WELL	REMOVE AND DISPOSE PIPE	REMOVE AND DISPOSE PAVEMENT AND RIGID BASE	REMOVE AND DISPOSE RIGID BASE	REMOVE AND DISPOSE SIGN	REMOVE AND DISPOSE TRAFFIC SIGNAL SYSTEM	REMOVE AND DISPOSE SIDEWALK	REMOVE AND DISPOSE TELEPHONE DUCT BANKS	REMOVE AND DISPOSE UTILITY POLE	REMOVE AND DISPOSE PAVED WATERWAY	FILTER FABRIC RIPRAP FLARED END UNDERLAYMENT	FLARED GUARDRAIL END TREATMENT	IMPACT ATTENUATOR	IMPERVIOUS DITCH LINER	LIMIT OF DISTURBANCE	LIMIT OF REGRADING	4" LOAM AND SEED
-----------------------------	-------------------------------	---------------------------	----------------------------------	----------------------------------	---------------------------------	---------------------------------	------------------------------	--------------------------	--	-----------------------------------	--------------------------------	--	--	-------------------	---	----------------------	-----------------------	---------------	------------	--	------------------------------------	----------------------------------	--------------------------------	-------------------------------	--------------------------	------------------------------------	---------------------------------------	------------------------------------	---------------------------------	--------------------------------------	------------------------------	-----------------------------	----------------------------------	-----------------------------	---	-----------------------------------	----------------------------	----------------------------------	-------------------------------------	-------------------------	--	-------------------------------	-------------------------	--	-----------------------------	---	---------------------------------	-----------------------------------	--	--------------------------------	-------------------	------------------------	----------------------	--------------------	------------------

NFH	NEW FIRE HYDRANT WITH GATE VALVE
NIC	NOT IN THIS CONSTRUCTION CONTRACT
NWB	FURNISH AND INSTALL NEW WATER GATE VALVE BOX
NWVB	FURNISH AND INSTALL NEW WATER GATE VALVE AND BOX
NWCB	FURNISH AND INSTALL NEW WATER CURB STOP BOX
NWSB	FURNISH AND INSTALL NEW WATER CURB STOP AND BOX
PCD	PERMANENT CHECK DAM
PS	4" PLANTABLE SOIL AND SEED
RCB	RECONSTRUCT TYPE "D" CATCH BASIN, TO CATCH BASIN WITH GUTTER INLET
RCM	R.I.D.O.T. COMMUNICATIONS MANHOLE
RHH	REMOVE, HANDLE, HAUL, TRIM, RESET CURB EDGING, STRAIGHT, CIRCULAR (ALL TYPES)
RLP	RELOCATE LAMP POST
RMB	RELOCATE MAILBOX (BY OTHERS)
RPM	REMOVE PAVEMENT MARKINGS
RRP	RIP-RAP PAD (SEE DETAIL)
RRS	REMOVE AND RELOCATE SIGN
RUP	RELOCATE UTILITY POLE (BY OTHERS)
SB	STONE BAFFLE
SBAE	STEEL BEAM BRIDGE CONNECTION APPROACH END (W/O NESTED RAIL)
SBTE	STEEL BEAM BRIDGE CONNECTION TRAILING END (W/NESTED RAIL)
SD	STRUCTURAL DISPOSITION - SEE CS PAGES OF SPECIFICATION
SF	REMOVE AND STOCKPILE FENCE
SGA	SPECIAL GRADED AGGREGATE
SGC	REMOVE AND STOCKPILE GRANITE CURB
SGR	REMOVE AND STOCKPILE GUARDRAIL
SH	REMOVE AND STOCKPILE HYDRANT
SS	REMOVE AND STOCKPILE SIGN
STS	REMOVE AND STOCKPILE TRAFFIC SIGNAL SYSTEM
TB	CONCRETE THRUST BLOCK
TEP	TIE EXISTING PIPE INTO NEW STRUCTURE
TNP	TIE NEW PIPE INTO EXISTING STRUCTURE
TBT	THREE BEAM TRANSITION
TBBC	THREE BEAM BRIDGE CONNECTION
TT	TREE TRIMMING
WCM	4" WOOD CHIP MULCH
4DY	4" EPOXY RESIN PAVEMENT MARKINGS - DOUBLE YELLOW
6W	6" EPOXY RESIN PAVEMENT MARKINGS - WHITE
12W	12" EPOXY RESIN PAVEMENT MARKINGS - WHITE
6WT	6" PREFORMED PATTERNED MARKING (HIGH PERFORMANCE TAPE)
4Y	4" EPOXY RESIN PAVEMENT MARKINGS - YELLOW
6Y	6" EPOXY RESIN PAVEMENT MARKINGS - YELLOW

P.G.L. PROFILE GRADE LINE
 DEPARTMENT OF ENVIRONMENTAL MANAGEMENT
 OFFICE OF WATER RESOURCES
 FRESHWATER WETLANDS PROGRAM
 APPROVED WITH CONDITIONS
 AS SPECIFIED IN THE LETTER OF APPROVAL
 DATED SEP 09 2011 FILE # 11-0103
 NO CHANGES ALLOWED WITHOUT PRIOR APPROVAL
 APPROVED PLANS MUST BE AT CONSTRUCTION SITE

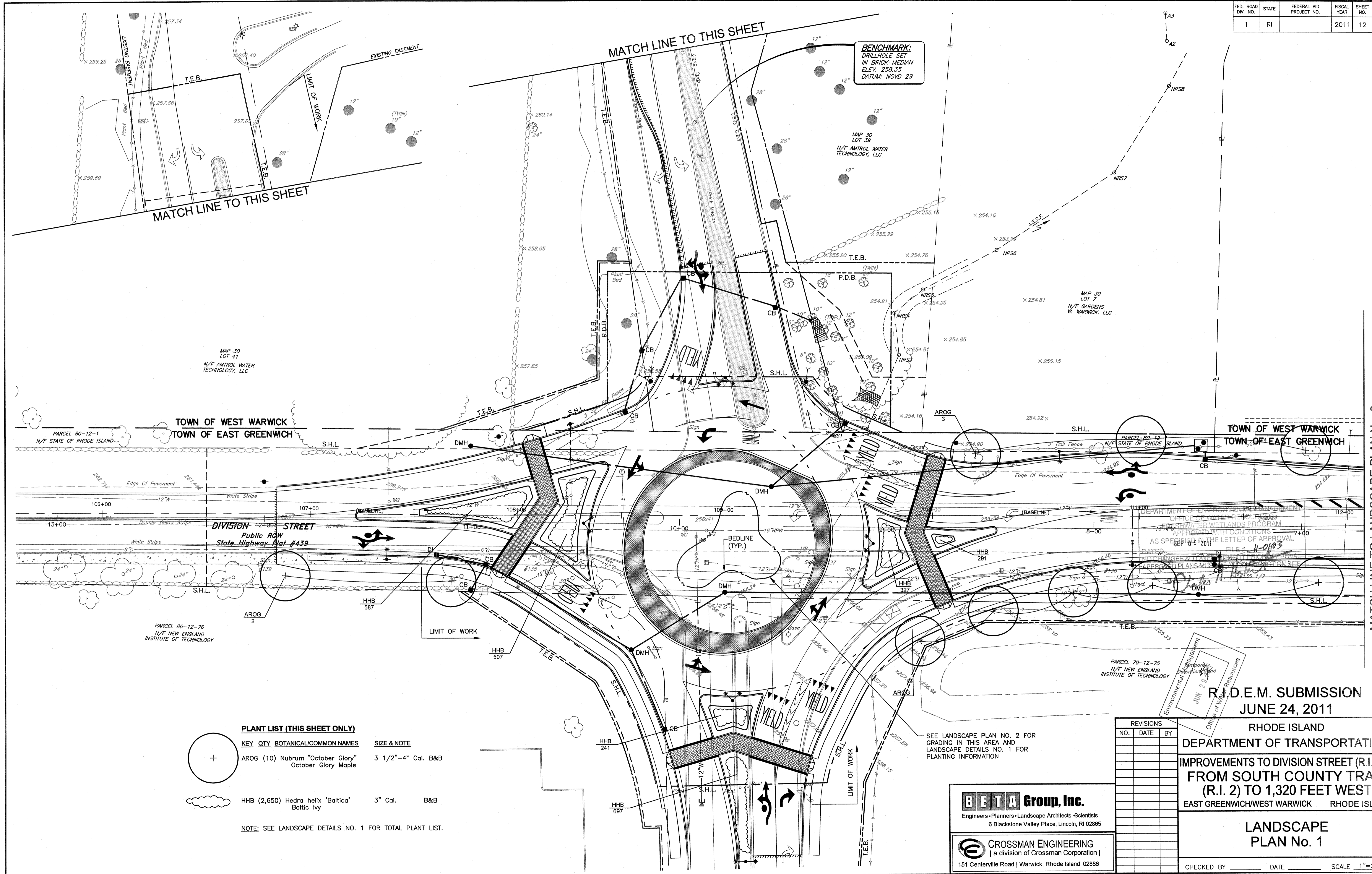
R.I.D.E.M. SUBMISSION
 Charles J. [Signature]
JUNE 24, 2011

THIS PLAN SHALL NOT BE ALTERED

REVISIONS			RHODE ISLAND	
NO.	DATE	BY	DEPARTMENT OF TRANSPORTATION	
1	6/07	TRB	IMPROVEMENTS TO DIVISION STREET (R.I. 401) FROM SOUTH COUNTY TRAIL (R.I. 2) TO 1,320 FEET WEST EAST GREENWICH/WEST WARWICK RHODE ISLAND	
			STANDARD PLAN SYMBOLS & STANDARD LEGEND	
CHECKED BY _____ DATE _____ SCALE NO. SCALE				

CROSSMAN ENGINEERING
 a division of Crossman Corporation |
 151 Centerville Road | Warwick, Rhode Island 02886

FED. ROAD DIV. NO.	STATE	FEDERAL AID PROJECT NO.	FISCAL YEAR	SHEET NO.	TOTAL SHEETS
1	RI		2011	12	16



PLANT LIST (THIS SHEET ONLY)

KEY	QTY	BOTANICAL/COMMON NAMES	SIZE & NOTE
	AROG (10)	Nubrum "October Glory" October Glory Maple	3 1/2"-4" Cal. B&B
	HHB (2,650)	Hedra helix 'Baltica' Baltic Ivy	3" Cal. B&B

NOTE: SEE LANDSCAPE DETAILS NO. 1 FOR TOTAL PLANT LIST.

REVISIONS		
NO.	DATE	BY

R.I.D.E.M. SUBMISSION
JUNE 24, 2011

RHODE ISLAND
DEPARTMENT OF TRANSPORTATION
IMPROVEMENTS TO DIVISION STREET (R.I. 401)
FROM SOUTH COUNTY TRAIL (R.I. 2) TO 1,320 FEET WEST
EAST GREENWICH/WEST WARWICK RHODE ISLAND

BETA Group, Inc.
Engineers • Planners • Landscape Architects • Scientists
6 Blackstone Valley Place, Lincoln, RI 02865

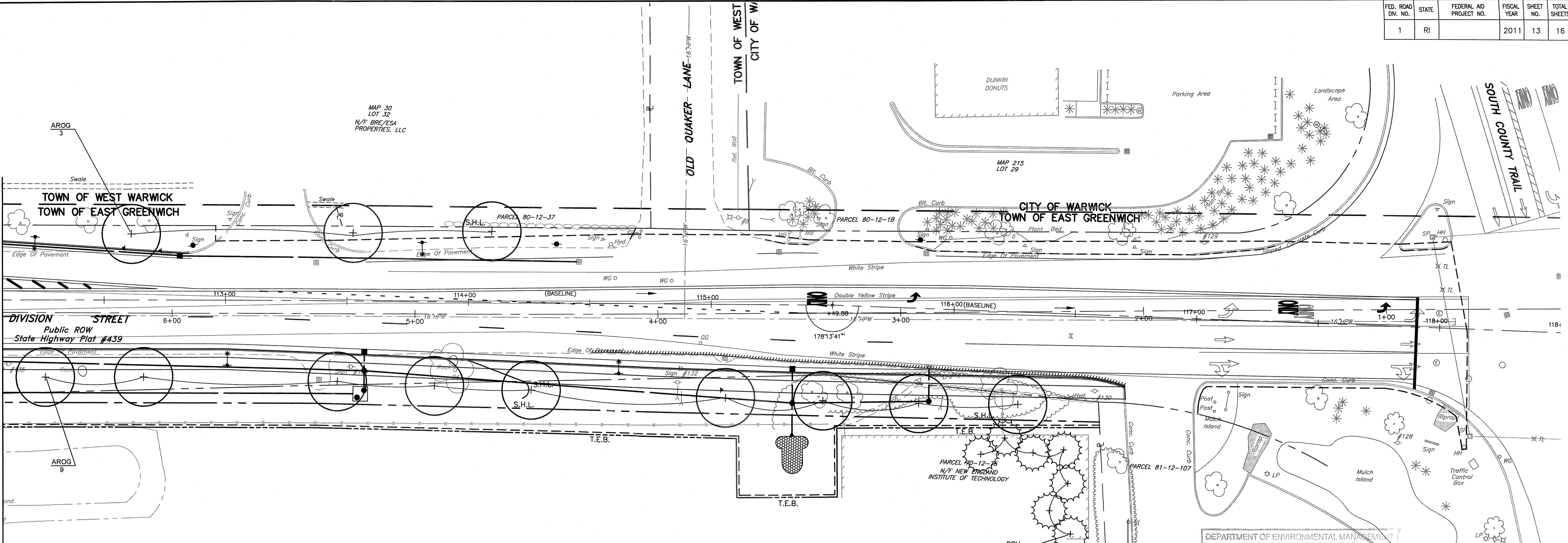
CROSSMAN ENGINEERING
[a division of Crossman Corporation]
151 Centerville Road | Warwick, Rhode Island 02886

LANDSCAPE PLAN No. 1

CHECKED BY _____ DATE _____ SCALE 1"=20'

N:\3000\3680\1671\AutoCAD Files\Plan 54\1691_V1_160_LANDSCAP001.dwg Jun. 27. 2011 10:45am

MATCH LINE TO LANDSCAPE PLAN No. 1

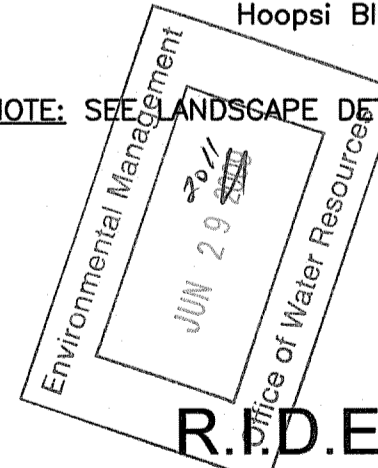


DEPARTMENT OF ENVIRONMENTAL MANAGEMENT
 OFFICE OF WATER RESOURCES
 FRESHWATER WETLANDS PROGRAM
 APPROVED WITH CONDITIONS
 AS SPECIFIED IN THE LETTER OF APPROVAL
 DATED SEP 09 2011 FILE # 11-0103
 NO CHANGES ALLOWED WITHOUT PRIOR APPROVAL
 APPROVED BY: [Signature]

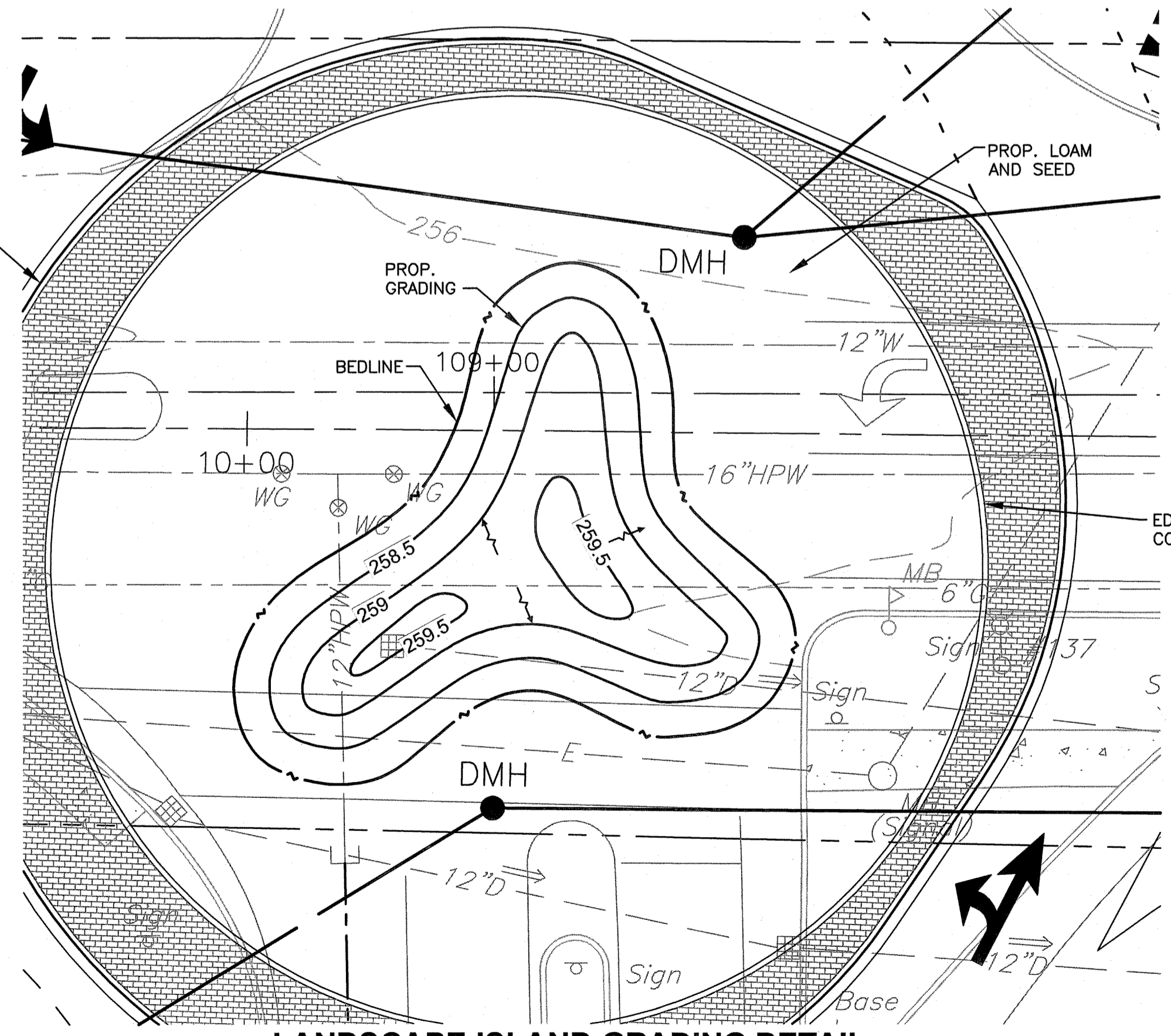
PLANT LIST (THIS SHEET ONLY)

KEY	QTY	BOTANICAL/COMMON NAMES	SIZE & NOTE
+	AROG (14)	Nubrum "October Glory" October Glory Maple	3 1/2"-4" Cal. B&B
+	PPH 7	Picea pungans 'Hoopsii' Hoopsii Blue Spruce	8'-10" Cal. B&B

NOTE: SEE LANDSCAPE DETAILS NO. 1 FOR TOTAL PLANT LIST.

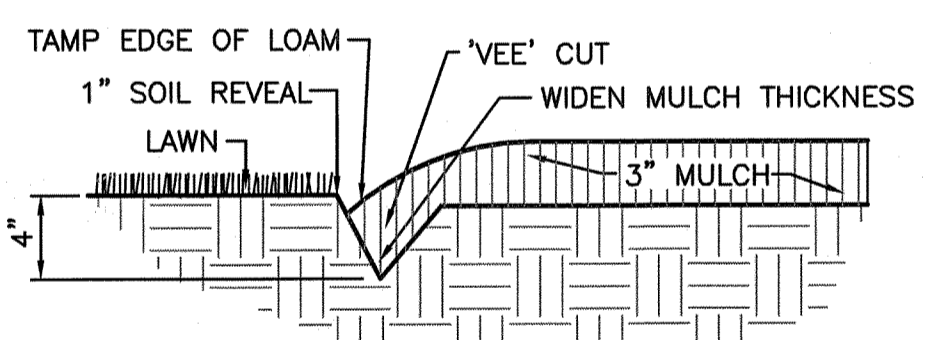


R.F.D.E.M. SUBMISSION
JUNE 24, 2011

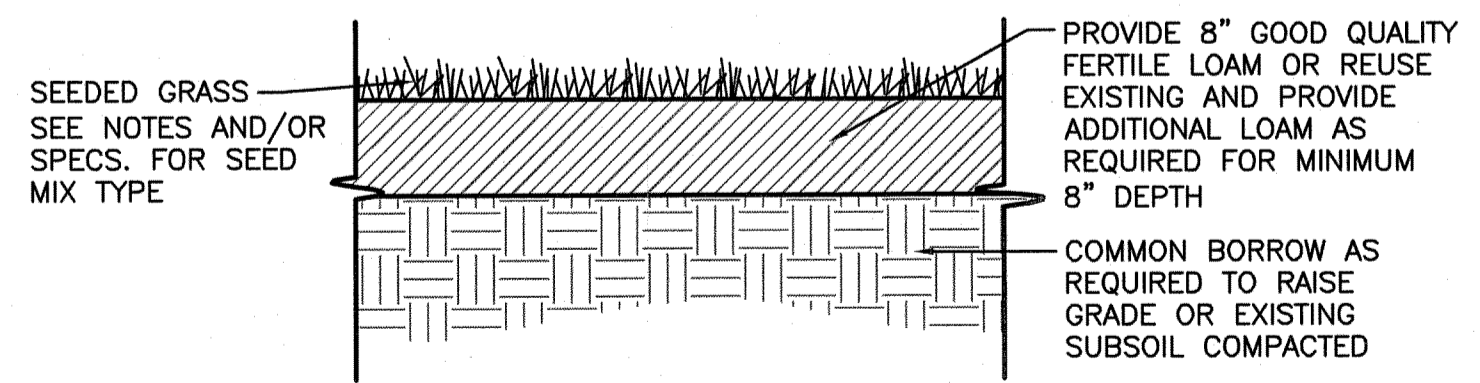


NOTE:
 NEW CONTOURS WITHIN
 CENTER ISLAND REPRESENT
 PROPOSED ELEVATION ABOVE
 THE ADJACENT CURBING

LANDSCAPE ISLAND GRADING DETAIL
 SCALE: 1"=10'



BEDLINE EDGE DETAIL
 NOT TO SCALE



LOAM AND SEED DETAIL
 NOT TO SCALE

REVISIONS		
NO.	DATE	BY

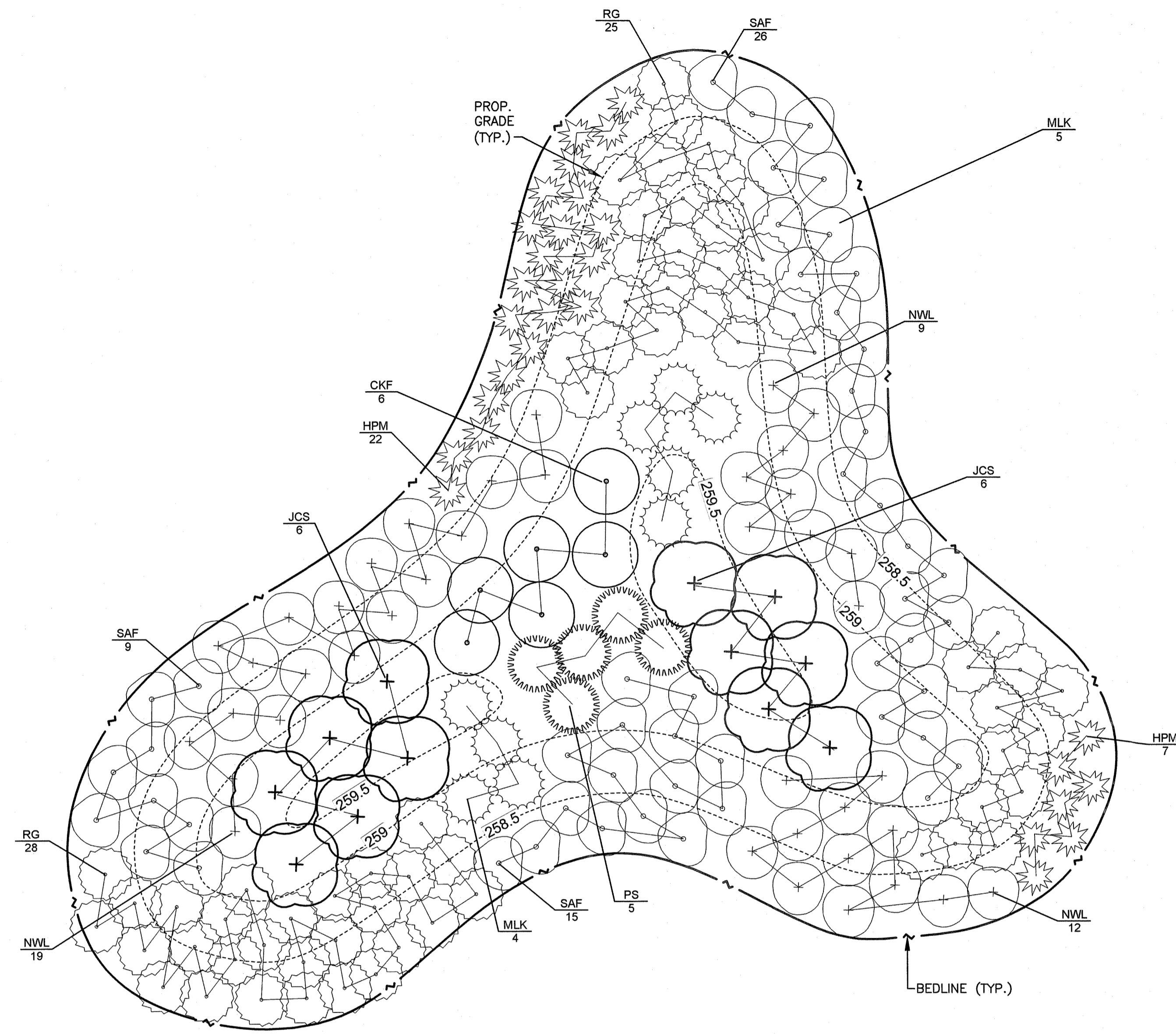
RHODE ISLAND
 DEPARTMENT OF TRANSPORTATION
 IMPROVEMENTS TO DIVISION STREET (R.I. 401)
 FROM SOUTH COUNTY TRAIL
 (R.I. 2) TO 1,320 FEET WEST
 EAST GREENWICH/WEST WARWICK RHODE ISLAND

**LANDSCAPE
 PLAN No. 2**

CHECKED BY _____ DATE _____ SCALE 1"=20'

BETA Group, Inc.
 Engineers • Planners • Landscape Architects • Scientists
 6 Blackstone Valley Place, Lincoln, RI 02865

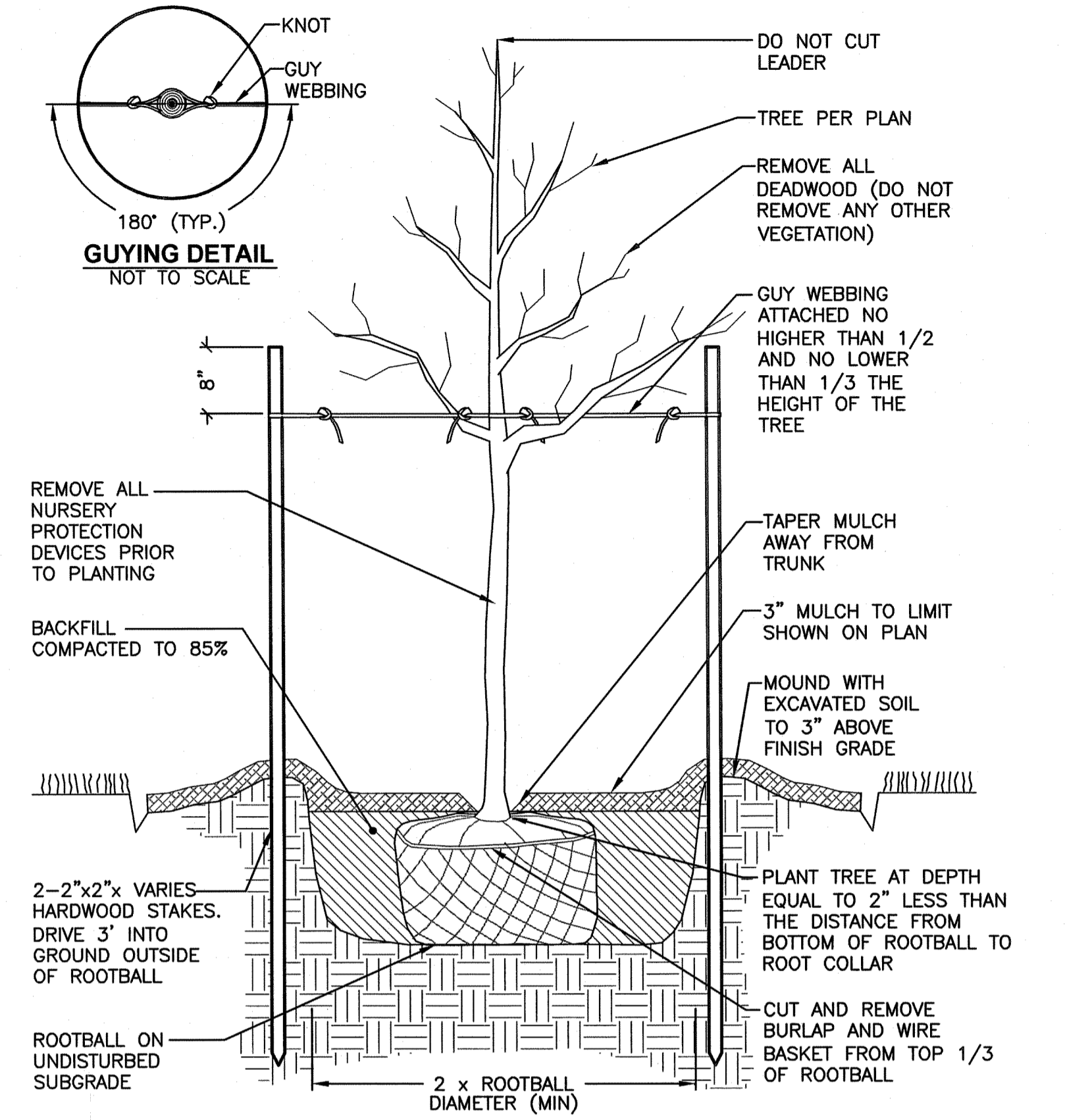
CROSSMAN ENGINEERING
 a division of Crossman Corporation |
 151 Centerville Road | Warwick, Rhode Island 02886



LANDSCAPE ISLAND DETAIL
SCALE: 1"=8'

KEY	QTY	BOTANICAL/COMMON NAMES	SIZE & NOTE
⊕	JCS 12	Juniperus chinensis 'Seagreen' Seagreen Juniper	24"-30" cont.
○	NWL 40	Nepeta 'Walkers Low' Walkers Low Catmint	1 gal. cont.
○	CKE 6	Calamagrostis 'Karl Foster' Karl Foster Reed Grass	1 gal. cont.
○	PS 5	Panicum 'Shenandoah' Shenandoah Panicum	1 gal. cont.
○	MLK 9	Miscanthus 'Little Kitten' Little Kitten Maiden Grass	1 gal. cont.
○	RG 65	Rudbeckia 'Goldstrum' Goldstrum Black-eyed Susan	1 gal. cont.
○	SAF 50	Sedum 'Autumn Fire' Autumn Fire Stonecrop	1 gal. cont.
⊛	HPM 29	Hemerocallis 'Pardon Me' Pardon Me Daylily	1 gal. cont.
⊕	PPH 7	Picea pungens 'Hoopsii' Hoopsii Blue Spruce	8'-10' Cal. B&B
⊕	AROG (10)	Nubrum 'October Glory' October Glory Maple	3 1/2"-4" Cal. B&B

KEY	QTY	BOTANICAL/COMMON NAMES	SIZE & NOTE
⊕	JCS 12	Juniperus chinensis 'Seagreen' Seagreen Juniper	24"-30" cont.
○	NWL 40	Nepeta 'Walkers Low' Walkers Low Catmint	1 gal. cont.
○	CKE 6	Calamagrostis 'Karl Foster' Karl Foster Reed Grass	1 gal. cont.
○	PS 5	Panicum 'Shenandoah' Shenandoah Panicum	1 gal. cont.
○	MLK 9	Miscanthus 'Little Kitten' Little Kitten Maiden Grass	1 gal. cont.
○	RG 65	Rudbeckia 'Goldstrum' Goldstrum Black-eyed Susan	1 gal. cont.
○	SAF 50	Sedum 'Autumn Fire' Autumn Fire Stonecrop	1 gal. cont.
⊛	HPM 29	Hemerocallis 'Pardon Me' Pardon Me Daylily	1 gal. cont.
⊕	HHB 2,650	Hedra helix 'Baltica' Baltic Ivy	3" Cal. B&B

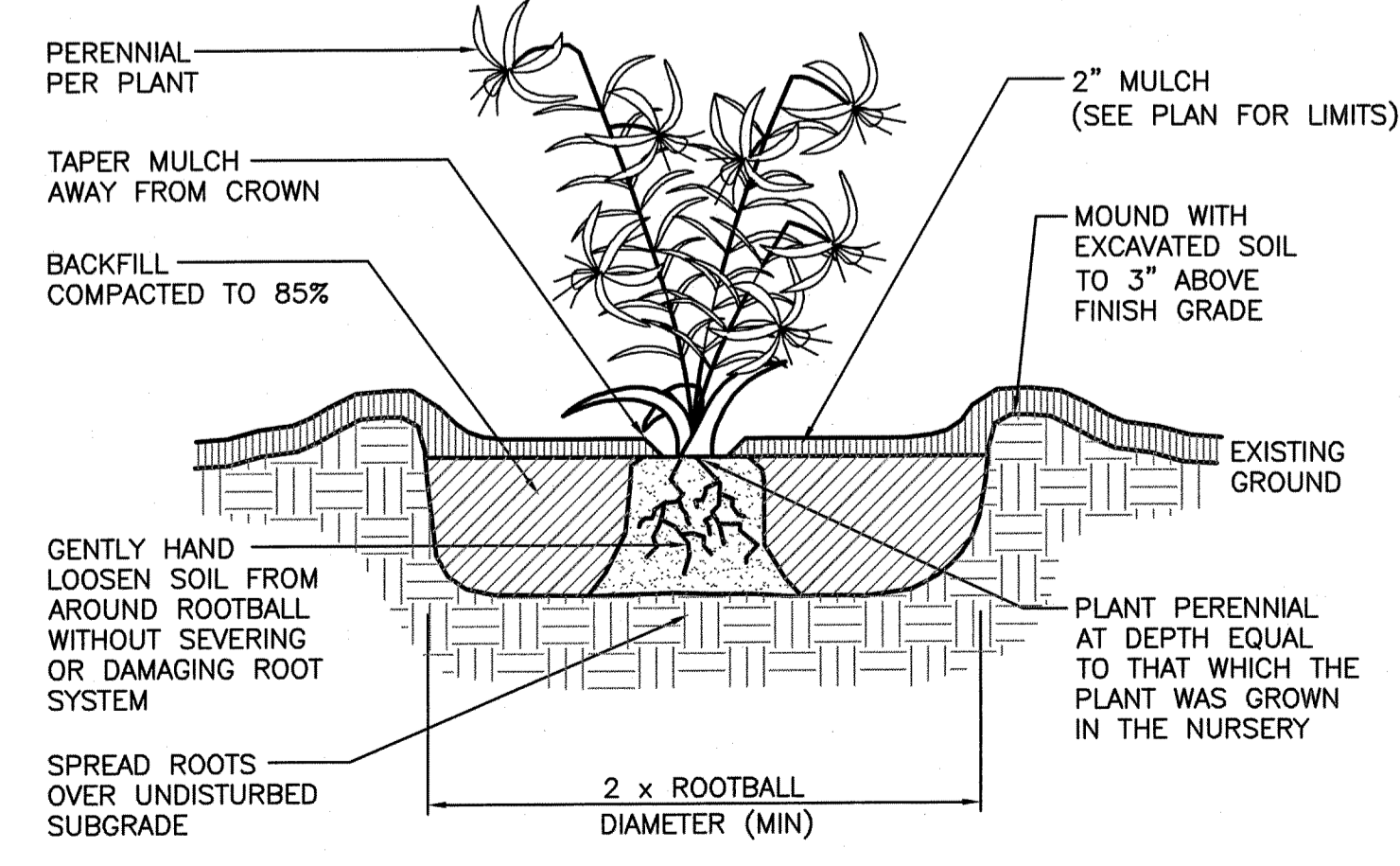


NOTE:
1. AFTER THE GUARANTEE PERIOD THE CONTRACTOR WILL BE RESPONSIBLE FOR THE REMOVAL OF STAKES AND GUY WEBBING.

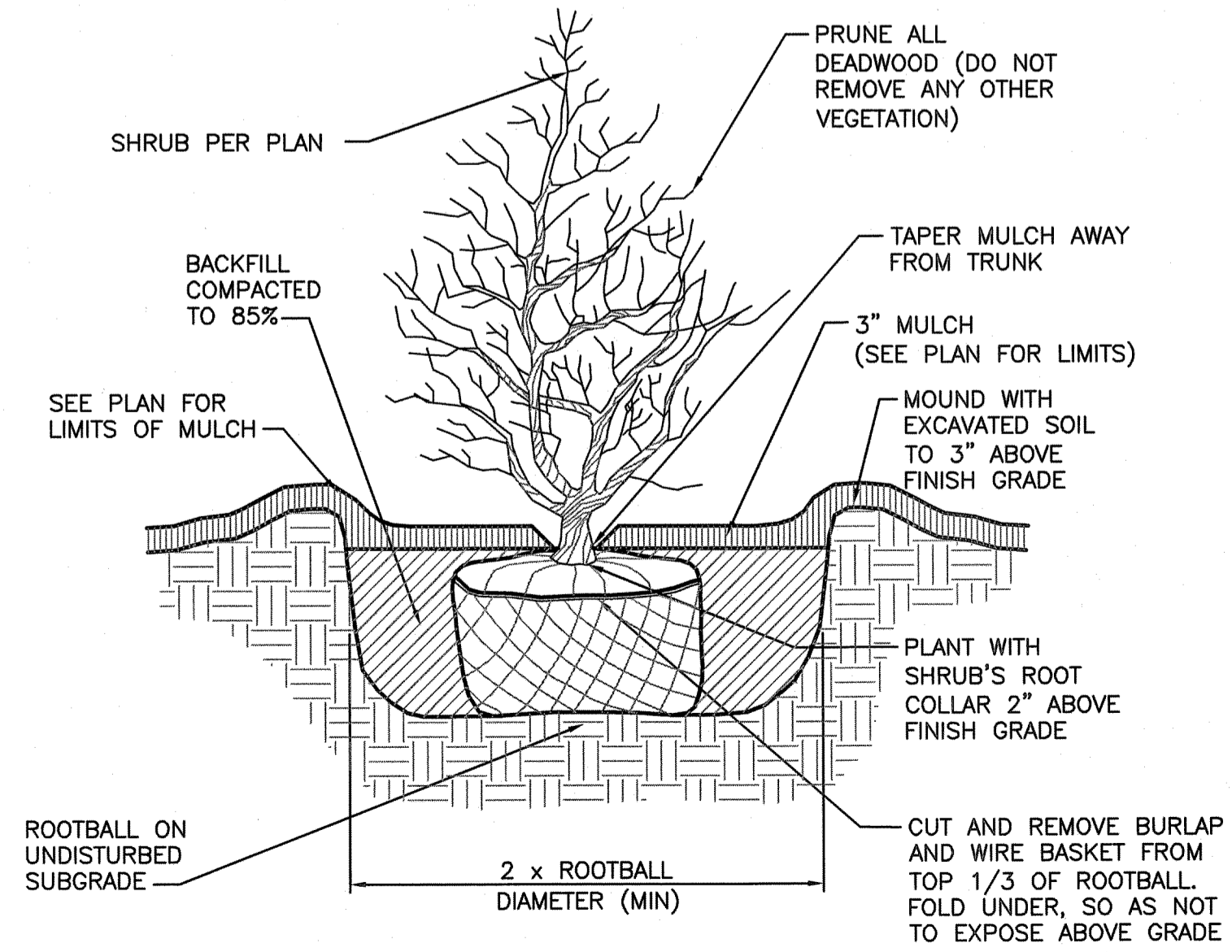
DECIDUOUS TREE STAKING AND PLANTING DETAIL
NOT TO SCALE

DEPARTMENT OF ENVIRONMENTAL MANAGEMENT
OFFICE OF WATER RESOURCES
FRESHWATER WETLANDS PROGRAM
APPROVED WITH CONDITIONS
AS SPECIFIED IN THE LETTER OF APPROVAL
DATED SEP 09 2011 FILE # 11-0103
NO CHANGES ALLOWED WITHOUT PRIOR APPROVAL
APPROVED PLANS MUST BE AT CONSTRUCTION SITE

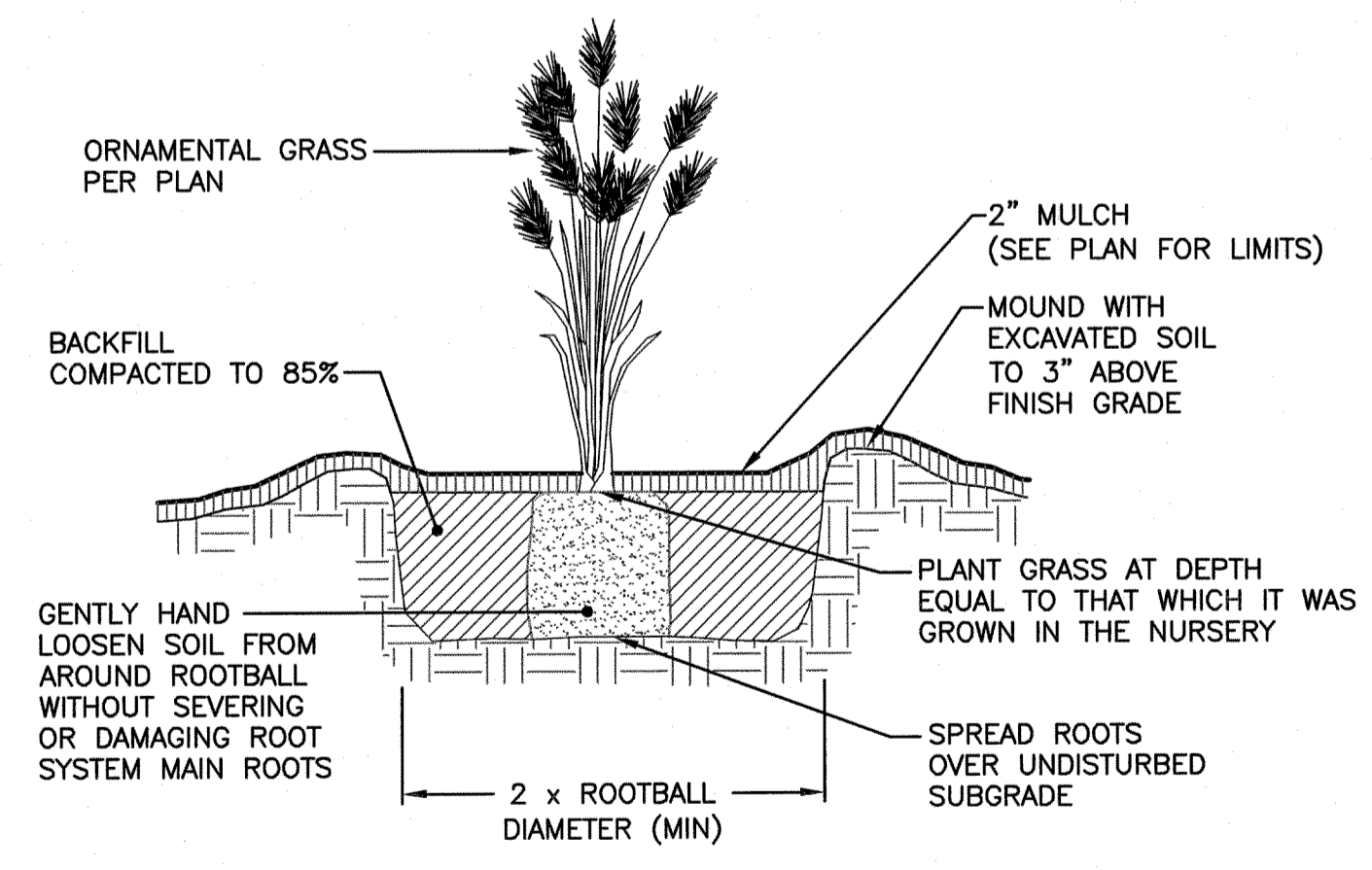
Environmental Management
Office of Water Resources
JUN 29 2011
Charles A. Hester
R.I.D.E.M. SUBMISSION
JUNE 24, 2011



PERENNIAL PLANTING DETAIL
NOT TO SCALE



SHRUB PLANTING DETAIL
NOT TO SCALE



ORNAMENTAL GRASS PLANTING DETAIL
NOT TO SCALE

BETA Group, Inc.
Engineers • Planners • Landscape Architects • Scientists
6 Blackstone Valley Place, Lincoln, RI 02865

CROSSMAN ENGINEERING
[a division of Crossman Corporation]
151 Centerville Road | Warwick, Rhode Island 02886

REVISIONS		
NO.	DATE	BY

RHODE ISLAND DEPARTMENT OF TRANSPORTATION
IMPROVEMENTS TO DIVISION STREET (R.I. 401) FROM SOUTH COUNTY TRAIL (R.I. 2) TO 1,320 FEET WEST EAST GREENWICH/WEST WARWICK RHODE ISLAND

LANDSCAPE DETAILS No. 1

CHECKED BY _____ DATE _____ SCALE 1"=20'

