

FED. ROAD DIV. NO.	STATE	FEDERAL AID PROJECT NO.	FISCAL YEAR	SHEET NO.	TOTAL SHEETS
1	R.I.			1	45

INDEX

SHEET NO.	DWG. NO.	DESCRIPTION
* 1		COVER SHEET
* 2		STANDARD PLAN SYMBOLS & STANDARD LEGEND
* 3		STANDARD NOTES - 1
* 4		STANDARD NOTES - 2
* 5	JSSN	JOB SPECIFIC PLAN SYMBOLS AND NOTES
6		LIST OF ABBREVIATIONS
* 7	TRS	TYPICAL ROADWAY SECTIONS
* 8	GP	GENERAL PLAN
* 9	UP	UTILITY PLAN
10	GRP	GRADING PLAN
11	PSP	PAVEMENT STRIPING PLAN
12	HP	PROFILE
13	GN1	GENERAL NOTES - 1 (STRUCTURE)
14	GN2	GENERAL NOTES - 2 (STRUCTURE)
15	GPE	GENERAL PLAN AND ELEVATION
* 16	DP	DEMOLITION PLAN
17	LP	LOCATION PLAN AND LONGITUDINAL SECTION
18	TBC	TYPICAL BRIDGE CROSS SECTION AND CONSTRUCTION NOTES
19	TUS1	TYPICAL SUGGESTED TEMPORARY UTILITY SUPPORT - 1
20	TUS2	TYPICAL SUGGESTED TEMPORARY UTILITY SUPPORT - 2
21	WA	ABUTMENT NO. 1 PLAN AND ELEVATION
22	EA	ABUTMENT NO. 2 PLAN AND ELEVATION
23	TAS	TYPICAL ABUTMENT SECTION AND DETAILS
24	WD	WINGWALLS WITH DETERIORATION MAPPING
25	SRD	SUBSTRUCTURE REPAIR DETAILS
26	UD1	UTILITY DETAILS - 1
27	UD2	UTILITY DETAILS - 2
28	BPD	KEEPER BLOCK, BEARING PEDESTAL AND PAD DETAILS
29	FPE	STEEL FRAMING PLAN AND GIRDER ELEVATION
30	SD	STEEL DETAILS
31	DD1	DIAPHRAGM DETAILS - 1
32	DD2	DIAPHRAGM DETAILS - 2
33	DD3	DIAPHRAGM DETAILS - 3
34	SP	DECK AND APPROACH SLAB PLAN
35	DG	DECK GRADES
36	DS	DECK SLAB DETAILS
37	FJ	DECK JOINT DETAILS
38	BRP	BRIDGE AND PEDESTRIAN RAILING PLAN
39	RL1	TWO BAR STEEL BRIDGE RAIL (CRASH TESTED)
40	RL2	TWO BAR STEEL BRIDGE RAIL WITH SIDEWALK
41	PRD	PEDESTRIAN RAIL DETAILS
42	MPT1	MAINTENANCE AND PROTECTION OF TRAFFIC PLAN - 1
43	MPT2	MAINTENANCE AND PROTECTION OF TRAFFIC PLAN - 2
1 of 2	2-1	TELEPHONE CONDUIT SUPPORTS, FRAMING PLAN, GENERAL NOTES AND LEGEND (VERIZON)
2 of 2	2-2	TELEPHONE CONDUIT SUPPORTS, MISCELLANEOUS DETAILS (VERIZON)

R.I. STANDARD SPECIFICATIONS AND STANDARD DETAILS

SPECIFICATIONS TO GOVERN THIS PROJECT ARE THE R.I. STANDARD SPECIFICATIONS FOR ROAD AND BRIDGE CONSTRUCTION, 2004 EDITION, AND THE STATE AND FEDERAL SPECIAL PROVISIONS INCLUDED IN THE CONTRACT DOCUMENTS. STANDARD DETAILS FOR THIS PROJECT ARE R.I. STANDARD DETAILS, 1998 EDITION, WITH ALL REVISIONS.

* DRAWINGS INCLUDED IN RIDEM SUBMISSION (9 SHEETS)

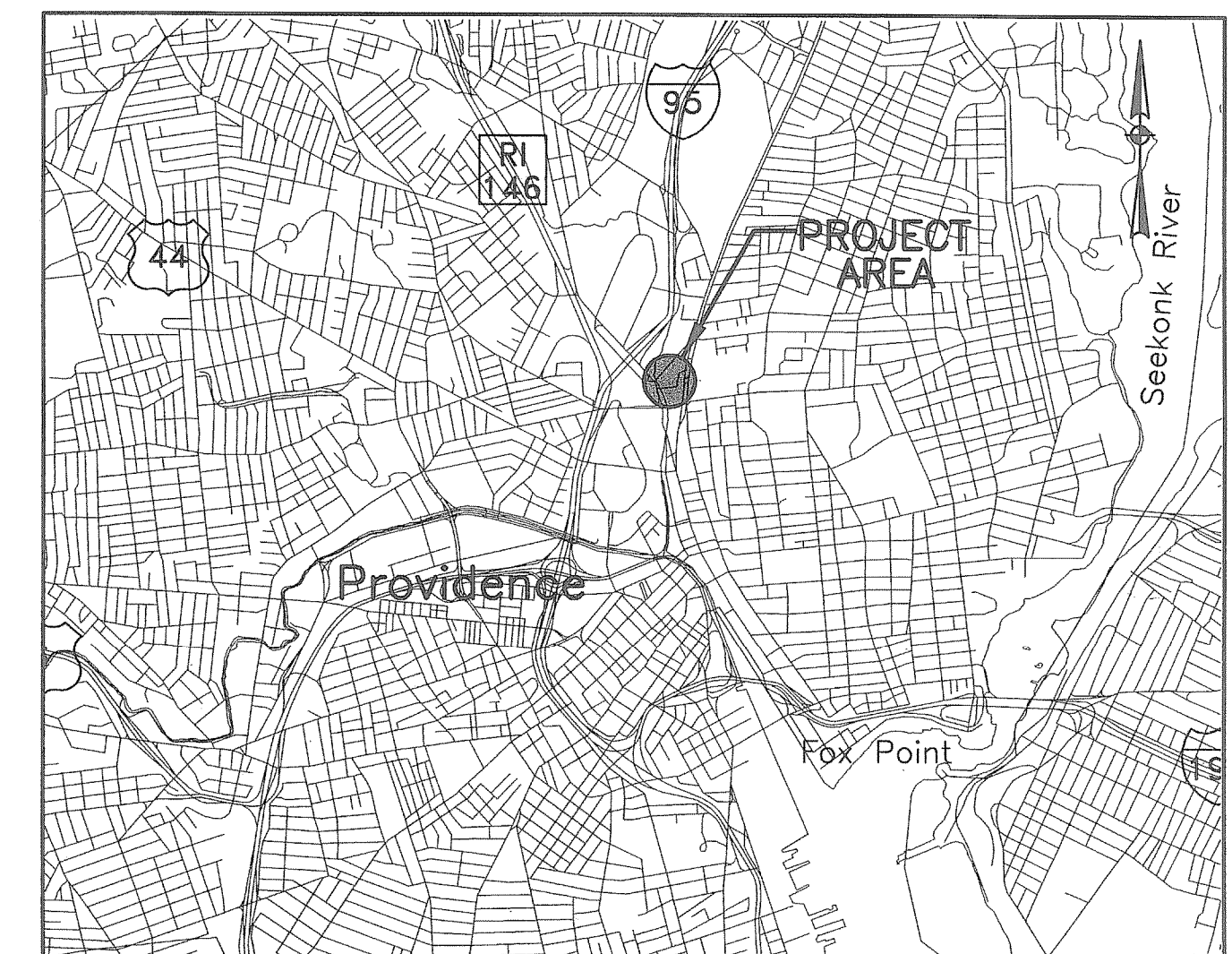
STATE OF RHODE ISLAND DEPARTMENT OF TRANSPORTATION

PLAN, PROFILE AND SECTIONS OF PROPOSED REHABILITATION OF RANDALL STREET BRIDGE

BRIDGE NO. 974
RANDALL STREET OVER MOSHASSUCK RIVER
CITY OF PROVIDENCE, RHODE ISLAND
COUNTY OF PROVIDENCE
RHODE ISLAND CONTRACT NO. 2012-CB-XXX
FEDERAL AID PROJECT NO. XXX-XXXX(XXX)

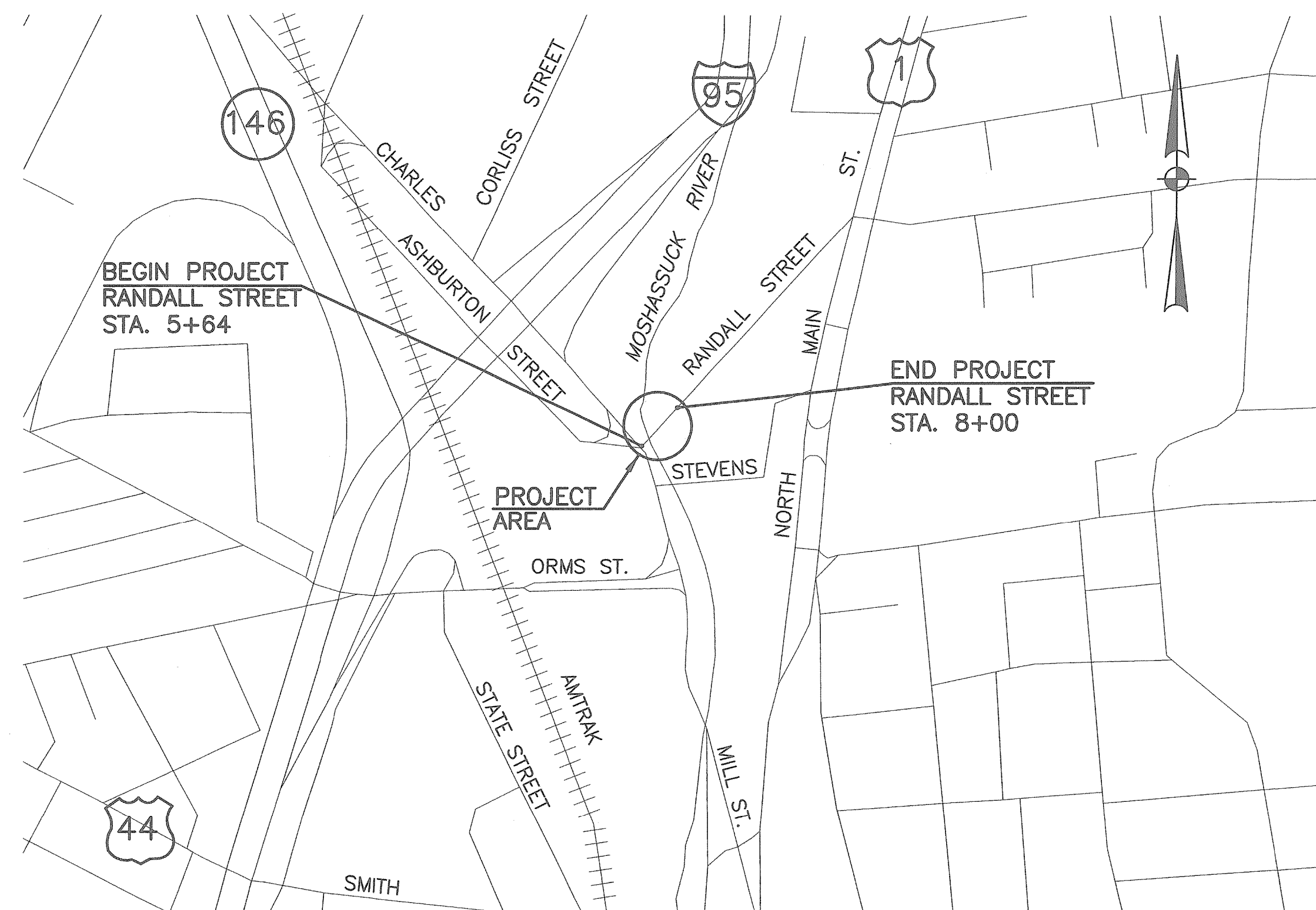
PAVEMENT STRUCTURE
2" BITUMINOUS SURFACE COURSE, SUPERPAVE MIX
6" BITUMINOUS BASE COURSE, SUPERPAVE MIX
12" GRAVEL BORROW SUBBASE COURSE

0.035 MILES



LOCUS MAP
1 INCH = 0.67 MILE

DESIGN	DESIGNATION
ADT	6,000 - 1992 7,960 - 2011



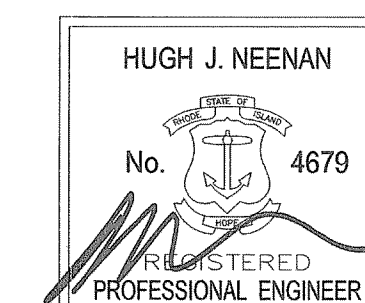
LAYOUT PLAN
1" = 400'

SCALES OF DRAWINGS

PLANS: AS NOTED

BASE OF LEVELS
NGVD 29

Rei
Prime Engineering, Inc.
142 Putnam Avenue, Johnston, RI 02919
Tel: 401.233.2993 Fax 401.233.2994



06-27-11

DEPARTMENT OF ENVIRONMENTAL MANAGEMENT
OFFICE OF WATER RESOURCES
FRESHWATER WETLANDS PROGRAM
APPROVED WITH CONDITIONS
AS SPECIFIED IN THE LETTER OF APPROVAL
DATED JUL 15 2011 FILE # 11-0106
NO CHANGES ALLOWED WITHOUT PRIOR APPROVAL
APPROVED PLANS MUST BE AT CONSTRUCTION SITE

Charles A. Harkin

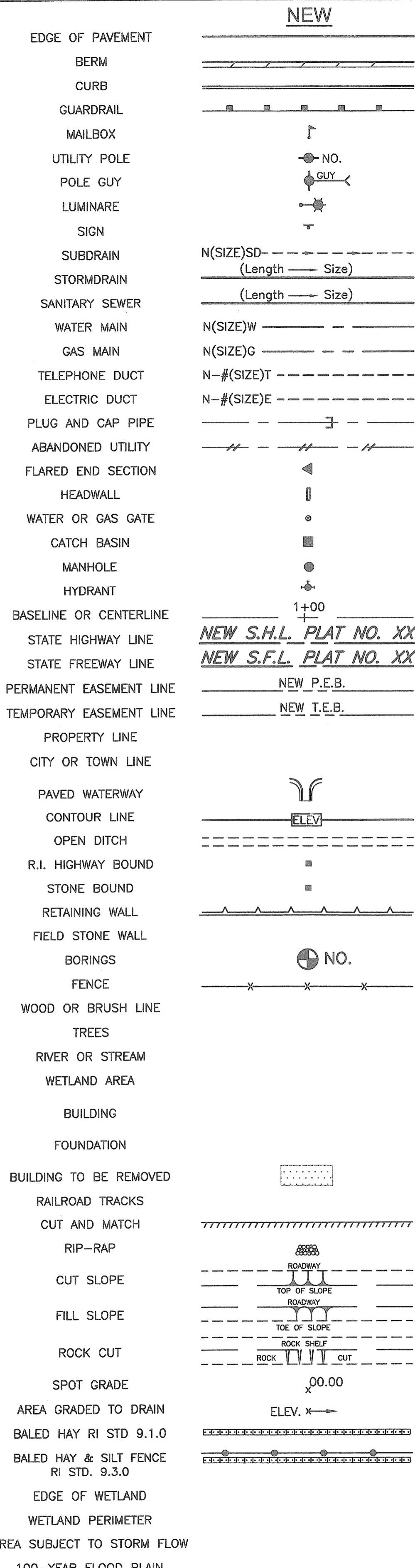
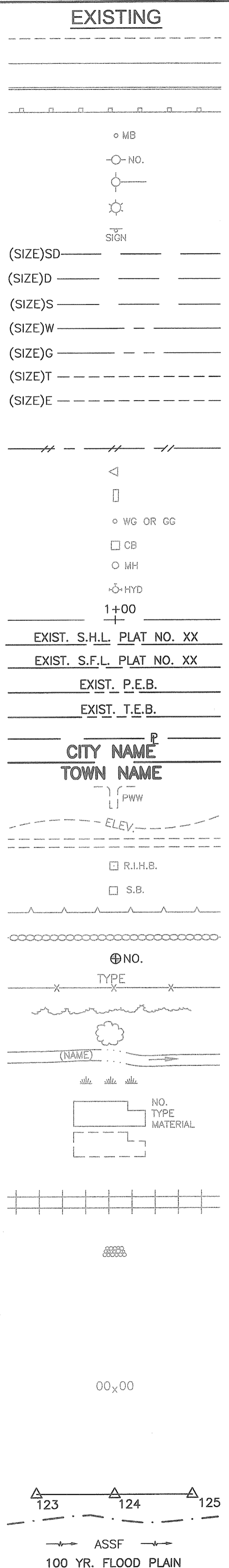
RIDEM SUBMISSION
JUNE 28, 2011

R.I. DEPARTMENT OF TRANSPORTATION	
APPROVED	DATE
DEPUTY CHIEF ENGINEER	DATE
APPROVED	DATE
CHIEF ENGINEER	DATE
APPROVED	DATE
DIRECTOR	DATE
DEPARTMENT OF TRANSPORTATION FEDERAL HIGHWAY ADMINISTRATION	
APPROVED	DATE
DIVISION ADMINISTRATION	DATE

Contract Number 2012-CB-XXX

Number of Sheets 43

Total Sheets 45



1.1.0	UNDERDRAIN
1.3.0	CONCRETE CONNECTING COLLAR
2.1.0	CONCRETE HEADWALLS FOR PIPE CULVERTS
2.2.0	STANDARD HEADWALLS FOR MULTIPLE 3'-6" TO 7'-0" PIPE CULVERTS
2.3.0 (DIA.)	PRECAST CONCRETE FLARED END SECTION
3.2.0	BRICK/SOLID BLOCK 4'-0" ROUND MANHOLE
3.2.1 (DIA.)	BRICK/SOLID BLOCK 5'-0" OR 6'-0" ROUND MANHOLE
3.3.0	BRICK/SOLID BLOCK TYPE "D" SQUARE CATCH BASIN
3.3.2	BRICK/SOLID BLOCK TYPE "F" SQUARE CATCH BASIN
3.3.3	SOLID BLOCK FLUSH SQUARE CATCH BASIN
3.4.0	BRICK/SOLID BLOCK TYPE "D" ROUND CATCH BASIN
3.4.1	BRICK/SOLID BLOCK ROUND CATCH BASIN WITH GUTTER INLET
3.4.2	BRICK/SOLID BLOCK TYPE "F" ROUND CATCH BASIN
3.4.3	BRICK/SOLID BLOCK TYPE "R" CATCH BASIN
3.4.4	SOLID BLOCK FLUSH ROUND CATCH BASIN
3.4.5 (DIA.)	BRICK/SOLID BLOCK 5'-0" OR 6'-0" ROUND CATCH BASIN
3.5.0	SOLID BLOCK SHALLOW TYPE "F" SQUARE CATCH BASIN
3.5.1 (SIZE)	SOLID BLOCK SHALLOW 5'-0" OR 6'-0" SQUARE CATCH BASIN
3.6.0	BRICK/SOLID BLOCK DROP INLET
3.7.0 (DIA.)	BRICK/SOLID BLOCK ROUND MANHOLE OR CATCH BASIN GREATER THAN 12'-0"
4.2.0	PRECAST 4'-0" ROUND MANHOLE
4.2.1	PRECAST 5'-0" ROUND MANHOLE
4.2.2	PRECAST 6'-0" ROUND MANHOLE
4.3.0 (SIZE)	PRECAST 4'-0" OR 6'-0" SQUARE MANHOLE OR CATCH BASIN
4.4.0 (DIA.)	PRECAST 4'-0", 5'-0", OR 6'-0" ROUND CATCH BASIN
4.5.0	PRECAST CONCRETE DROP INLET
4.5.1	PRECAST CONCRETE DROP INLET LATERAL OUTLET
4.5.2	PRECAST CONCRETE DROP INLET LONGITUDINAL OUTLET
5.3.0	CATCH BASIN AND MANHOLE STEP
5.4.0	CONCRETE COLLARS
6.1.0	LIGHT-DUTY SQUARE FRAME AND ROUND COVER
6.1.1	HEAVY DUTY SQUARE FRAME AND ROUND COVER
6.2.0	LIGHT-DUTY ROUND FRAME AND COVER
6.2.1	HEAVY-DUTY ROUND FRAME AND COVER
6.3.0	SQUARE FRAME AND GRATE
6.3.1	SQUARE FRAME AND GRATE
6.3.2	SQUARE FRAME AND GRATE (BICYCLE SAFE)
6.3.3	HIGH CAPACITY FRAME AND GRATE
6.3.4	HIGH CAPACITY FRAME AND GRATE (BICYCLE SAFE)
6.4.0	ROUND FRAME AND GRATE
7.1.0S	PRECAST CONCRETE CURB (STRAIGHT)
7.1.0C	PRECAST CONCRETE CURB (CIRCULAR)
7.1.1	3'-0" PRECAST CONCRETE TRANSITION CURB
7.1.2	6'-0" PRECAST CONCRETE TRANSITION CURB
7.1.4	PRECAST 2'-0" RADIUS CORNER
7.1.5	PRECAST CONCRETE INLET STONE (FOR SQUARE CATCH BASIN)
7.1.6	PRECAST CONCRETE INLET STONE (FOR ROUND CATCH BASIN)
7.1.7	PRECAST CONCRETE APRON STONE (FOR SQUARE CATCH BASIN)
7.1.8	PRECAST CONCRETE APRON STONE (FOR ROUND CATCH BASIN)
7.2.0S	PRECAST CONCRETE SLOPED FACE CURB (STRAIGHT)
7.2.0C	PRECAST CONCRETE SLOPED FACE CURB (CIRCULAR)
7.2.1	PRECAST CONCRETE SLOPED FACE TRANSITION CURB
7.2.2	PRECAST CONCRETE TRANSITION CURB (VERTICAL FACE TO SLOPED FACE)
7.3.0S	GRANITE CURB (STRAIGHT)
7.3.0C	GRANITE CURB (CIRCULAR)
7.3.1	3'-0" GRANITE TRANSITION CURB
7.3.2	6'-0" GRANITE TRANSITION CURB
7.3.3	GRANITE WHEELCHAIR RAMP TRANSITION CURB
7.3.4	GRANITE 2'-0" RADIUS CORNER
7.3.5	GRANITE INLET STONE (FOR SQUARE CATCH BASIN)
7.3.6	GRANITE INLET STONE (FOR ROUND CATCH BASIN)
7.3.7	GRANITE APRON STONE (FOR SQUARE CATCH BASIN)
7.3.8	GRANITE APRON STONE (FOR ROUND CATCH BASIN)
7.4.0	GRANITE SLOPED FACE CURB
7.4.1	GRANITE SLOPED FACE TRANSITION CURB

7.4.2	GRANITE TRANSITION CURB (VERTICAL FACE TO SLOPE FACE)
7.5.0	BITUMINOUS CONCRETE LIP CURB
7.5.1A	BITUMINOUS BERM (CONSTRUCTION METHOD A)
7.5.1B	BITUMINOUS BERM (CONSTRUCTION METHOD B)
7.6.0	CURB SETTING DETAIL
8.2.0	BITUMINOUS CONCRETE DITCH
8.3.0	RIP-RAP DITCH
8.4.0	PAVED WATERWAY
9.1.0	BALED HAY EROSION CHECK
9.2.0	SILT FENCE DETAIL
9.3.0	BALED HAY DITCH EROSION CHECK AND SILT FENCE COMBINED
9.4.0	BALED HAY DITCH AND SWALE EROSION CHECK
9.5.0	LOG AND HAY CHECK DAM
9.7.0	DEWATERING BASIN
9.8.0	BALED HAY CATCH BASIN INLET PROTECTION
9.9.0	CONSTRUCTION ACCESS
10.1.0	WET STONE MASONRY RETAINING WALL
10.2.0	RUBBLE MASONRY WALL
10.3.0	CONCRETE RETAINING WALL
10.4.0	STONE MASONRY STEPS
14.1.0	CONCRETE HIGHWAY BOUND
15.1.0	POST AND MOUNTINGS FOR RURAL MAILBOX
15.2.0 (NO.)	POST AND MULTIPLE MOUNTINGS FOR RURAL MAILBOXES
18.2.0	PRECAST TYPE "A" HANDHOLE
18.2.2	HEAVY DUTY TYPE "H" HANDHOLE
18.3.0	ALUMINUM LIGHTING STANDARDS
20.2.0	BI-DIRECTIONAL CONTROL DEVICE
24.6.1	STREET SIGN MOUNTING DETAIL
26.2.0	POLYETHYLENE DRUM WITH MARKINGS
26.3.0	PVC PLASTIC PIPE TYPE III BARRICADE
31.1.0	CHAIN LINK FENCE 3'-0" TO 4'-0"
31.2.0	CHAIN LINK FENCE 5'-0" TO 6'-0"
31.2.1	CHAIN LINK FENCE 5'-0" TO 6'-0" INTERMEDIATE POST
31.3.0	WOVEN WIRE RIGHT-OF-WAY FENCE (STEEL POST)
34.1.0	TYPICAL GUARDRAIL INSTALLATION
34.2.0	STEEL BEAM GUARDRAIL
34.2.1	STEEL BEAM GUARDRAIL DETAILS
34.2.2	STEEL BEAM GUARDRAIL DOUBLE FACED ASSEMBLY
34.2.3	STEEL BEAM GUARDRAIL FIXTURES
34.2.5	STEEL BEAM GUARDRAIL REFLECTORIZED TRIANGULAR DELINEATOR
34.3.1	GUARDRAIL END SECTION
34.3.2	TERMINAL END SECTION (SINGLE FACE)
34.3.3	ANCHORAGE DETAILS APPROACH END SECTION
34.3.4	ANCHORAGE DETAILS TRAILING END SECTION
34.4.0	STEEL BACKED TIMBER GUARDRAIL
34.4.1	STEEL BACKED TIMBER GUARDRAIL TERMINAL SECTION-TYPE 1
40.1.0	DOUBLE-FACED PRECAST MEDIAN BARRIER
40.2.0	SINGLE-FACED PRECAST MEDIAN BARRIER
40.2.1	SINGLE-FACED PRECAST MEDIAN BARRIER
40.3.0	PRECAST MEDIAN BARRIER TRANSITION UNIT
40.5.0	PRECAST MEDIAN BARRIER FOR TEMPORARY TRAFFIC CONTROL
43.1.0	CEMENT CONCRETE SIDEWALK
43.2.0	BITUMINOUS CONCRETE SIDEWALK
43.3.0	WHEELCHAIR RAMP
43.3.1	WHEELCHAIR RAMP FOR LIMITED RIGHT-OF-WAY AREAS
43.4.0	DRIVEWAY DEVELOPMENT FOR 3'-0" TRANSITION CURB
43.4.1	DRIVEWAY DEVELOPMENT FOR 6'-0" TRANSITION CURB
43.5.0	CEMENT CONCRETE DRIVEWAYS
48.1.0	DETECTABLE WARNING SYSTEM
51.1.0	TREE PROTECTION DEVICE
51.1.1	DRIP LINE TREE PROTECTION DEVICE FOR EXISTING TREES
51.2.0	SHRUB PROTECTION DEVICE
51.3.0	TREE WELL
51.4.0	TREE WALL

AB	ADJUST CATCH BASIN TO GRADE
ABM	ADJUST CATCH BASIN TO MANHOLE
AC	ADJUST CURB STOP TO GRADE
AD	ADJUST DRAINAGE MANHOLE TO GRADE
AE	ADJUST ELECTRIC MANHOLE TO GRADE
AFC	ADJUST FRAME AND COVER TO GRADE
AFG	ADJUST FRAME AND GRATE TO GRADE
AG	ADJUST GAS GATE BOX TO GRADE
AHH	ADJUST HANDHOLE TO GRADE
AS	ADJUST SANITARY SEWER MANHOLE TO GRADE
AT	ADJUST TELEPHONE MANHOLE TO GRADE
AW	ADJUST WATER GATE BOX TO GRADE
BCD	BITUMINOUS CONCRETE DRIVEWAY 3" BITUMINOUS CONCRETE TYPE 1-2 8" GRAVEL BORROW SUBBASE COURSE
BPS	BUILD NEW STRUCTURE OVER EXISTING PIPE
CCB	CLEAN CATCH BASIN
CCP	CUT AND CAP PIPE WITH RESTRAINT (ALL SIZES)
CFP	CLEAN AND FLUSH PIPE
CG	CLEARING AND GRUBBING
CMH	CLEAN MANHOLE
CP (DEPTH)	COLD PLANE
CPP	CUT AND PLUG PIPE (ALL TYPES, ALL SIZES)
DB	REMOVE AND DISPOSE BITUMINOUS CURB
DC	REMOVE AND DISPOSE CONCRETE CURB
DCB	REMOVE AND DISPOSE CATCH BASIN
DDI	REMOVE AND DISPOSE DROP INLET
DF	REMOVE AND DISPOSE FENCE
DFC	REMOVE AND DISPOSE FRAME AND COVER
DFE	REMOVE AND DISPOSE FLARED END SECTION
DFG	REMOVE AND DISPOSE FRAME AND GRATE
DFH	REMOVE AND DISPOSE FIRE HYDRANT
DFP	REMOVE AND DISPOSE FLEXIBLE PAVEMENT
DG	REMOVE AND DISPOSE GUARDRAIL
DH	REMOVE AND DISPOSE HEADWALL
DHB	REMOVE AND DISPOSE HIGHWAY BOUND
DHH	REMOVE AND DISPOSE HANDHOLE
DL	REMOVE AND DISPOSE LIGHT AND FOUNDATION
DMB	REMOVE AND DISPOSE MEDIAN BARRIER
DMH	REMOVE AND DISPOSE MANHOLE
DMM	REMOVE AND DISPOSE MEDIAN MARKER
DOW	REMOVE AND DISPOSE OBSERVATION WELL
DP	REMOVE AND DISPOSE PIPE
DPB	REMOVE AND DISPOSE PAVEMENT AND RIGID BASE
DRB	REMOVE AND DISPOSE RIGID BASE
DS	REMOVE AND DISPOSE SIGN
DSS	REMOVE AND DISPOSE TRAFFIC SIGNAL SYSTEM
DSW	REMOVE AND DISPOSE SIDEWALK
DTD	REMOVE AND DISPOSE TELEPHONE DUCT BANKS
DUP	REMOVE AND DISPOSE UTILITY POLE
DWW	REMOVE AND DISPOSE PAVED WATERWAY
FF	FILTER FABRIC RIPRAP FLARED END UNDERLAYMENT
GET	FLARED GUARDRAIL END TREATMENT
IA	IMPACT ATTENUATOR
IDL	IMPERVIOUS DITCH LINER
LOD	LIMIT OF DISTURBANCE
LOR	LIMIT OF REGRADING
LS	4" LOAM AND SEED

NFH	NEW FIRE HYDRANT WITH GATE VALVE
NIC	NOT IN THIS CONSTRUCTION CONTRACT
NWB	FURNISH AND INSTALL NEW WATER GATE VALVE BOX
NWVB	FURNISH AND INSTALL NEW WATER GATE VALVE AND BOX
NWCB	FURNISH AND INSTALL NEW WATER CURB STOP BOX
NWSB	FURNISH AND INSTALL NEW WATER CURB STOP AND BOX
PCD	PERMANENT CHECK DAM
PS	4" PLANTABLE SOIL AND SEED
RCB	RECONSTRUCT TYPE "D" CATCH BASIN, TO CATCH BASIN WITH GUTTER INLET
RCM	R.I.D.O.T. COMMUNICATIONS MANHOLE
RHH	REMOVE, HANDLE, HAUL, TRIM, RESET CURB EDGING, STRAIGHT, CIRCULAR (ALL TYPES)
RLP	RELOCATE LAMP POST
RMB	RELOCATE MAILBOX (BY OTHERS)
RPM	REMOVE PAVEMENT MARKINGS
RRP	RIP-RAP PAD (SEE DETAIL)
RRS	REMOVE AND RELOCATE SIGN
RUP	RELOCATE UTILITY POLE (BY OTHERS)
SB	STONE BAFFLE
SBAE	STEEL BEAM BRIDGE CONNECTION APPROACH END (W/O NESTED RAIL)
SBTE	STEEL BEAM BRIDGE CONNECTION TRAILING END (W/NESTED RAIL)
SD-	STRUCTURAL DISPOSITION - SEE CS PAGES OF SPECIFICATION
SF	REMOVE AND STOCKPILE FENCE
SGA	SPECIAL GRADED AGGREGATE
SGC	REMOVE AND STOCKPILE GRANITE CURB
SGR	REMOVE AND STOCKPILE GUARDRAIL
SH	REMOVE AND STOCKPILE HYDRANT
SS	REMOVE AND STOCKPILE SIGN
STS	REMOVE AND STOCKPILE TRAFFIC SIGNAL SYSTEM
TB	CONCRETE THRUST BLOCK
TEP	TIE EXISTING PIPE INTO NEW STRUCTURE
TNP	TIE NEW PIPE INTO EXISTING STRUCTURE
TBT	THREE BEAM TRANSITION
TBBC	THREE BEAM BRIDGE CONNECTION
TT	TREE TRIMMING
WCM	4" WOOD CHIP MULCH
4DY	4" EPOXY RESIN PAVEMENT MARKINGS - DOUBLE YELLOW
6W	6" EPOXY RESIN PAVEMENT MARKINGS - WHITE
12W	12" EPOXY RESIN PAVEMENT MARKINGS - WHITE
6WT	6" PREFORMED PATTERNED MARKING (HIGH PERFORMANCE TAPE)
4Y	4" EPOXY RESIN PAVEMENT MARKINGS - YELLOW
6Y	6" EPOXY RESIN PAVEMENT MARKINGS - YELLOW
P.G.L.	PROFILE GRADE LINE

DEPARTMENT OF ENVIRONMENTAL MANAGEMENT
OFFICE OF WATER RESOURCES
FRESHWATER WETLANDS PROGRAM
APPROVED WITH CONDITIONS
AS SPECIFIED IN THE LETTER OF APPROVAL
DATED JUL 15 2011 FILE # 11-01D6
NO CHANGES ALLOWED WITHOUT PRIOR APPROVAL
APPROVED PLANS MUST BE AT CONSTRUCTION SITE

Charles H. Huber
Environmental Management
JUL 29 2011
Office of Water Resources

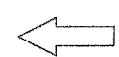
REVISIONS		
NO.	DATE	BY
1	6/07	TRB

RHODE ISLAND
DEPARTMENT OF TRANSPORTATION
RANDALL STREET
OVER MOSHASSUCK RIVER
BRIDGE NO. 974
PROVIDENCE, RHODE ISLAND
STANDARD PLAN SYMBOLS &
STANDARD LEGEND
CHECKED BY _____ DATE _____ SCALE NO SCALE

Rei
142 Putnam Avenue, Johnston, RI 02919
Tel: 401.233.2993 Fax 401.233.2994
Prime Engineering, Inc.

JOB SPECIFIC PLAN SYMBOLS

EXISTING



TRAFFIC FLOW DIRECTION

NEW

JOB SPECIFIC GENERAL LEGEND

- (A) (X") 2" BITUMINOUS SURFACE COURSE, SUPERPAVE MIX
- (ABC) ROAD WITH BITUMINOUS BASE:
2" BITUMINOUS SURFACE COURSE, SUPERPAVE MIX
6" BITUMINOUS BASE COURSE, SUPERPAVE MIX
12" GRAVEL BORROW SUBBASE COURSE
- (P-18) PROVIDENCE STD. INLET STONE, P-18
- (RDSC) REMOVE AND DISPOSE STEEL CURB
- (RLD) REMOVE AND REPLACE LOOP DETECTOR
- (RRLS) REMOVE, STORE AND RESET LIGHT STANDARD
- (RSCB) REMOVE AND STORE TEMPORARY CRASH BARRRELS (SEE GENERAL NOTE NO. 15)
- (RSTB) REMOVE AND STORE TEMPORARY CONCRETE TRAFFIC BARRIER (SEE GENERAL NOTE NO. 15)
- (SDP) 12" DIA. STEEL DRAINAGE PIPE
- (TCLF) TEMPORARY CHAIN LINK FENCE (6'-0" HIGH)
- (TS) REMOVE AND REPLANT SHRUBS
- (TWO) TREE WELL OPENING IN SIDEWALK (4'-6" SQ.)
- (W) NEW WHITE EPOXY RESIN PAVEMENT MARKING:
WORD SYMBOL - "ONLY" (5'-9"Wx8'-0"H)
- LT OR RT TURN ARROW

GENERAL NOTES:

- TOPOGRAPHICAL INFORMATION:-
GROUND CONTROL SURVEY: GILBERT & MALONEY, PROVIDENCE, RI 02903
- ALL ELEVATIONS ARE BASED ON NGVD 1929.
- EXISTING MAPPING IS BASED ON THE STATEWIDE COORDINATE SYSTEM.
- THE RIDOT LANDSCAPE ARCHITECT MUST APPROVE, IN ADVANCE, ALL TREE REMOVAL, TREE TRIMMING, ROOT PRUNING, AND EXCAVATION.
- CARE SHALL BE TAKEN DURING CONSTRUCTION OPERATIONS NOT TO DAMAGE THE BRANCHES OF TREES TO REMAIN.
- THE CONTRACTOR SHALL PLACE ALL EQUIPMENT AND STOCKPILED MATERIAL SO AS NOT TO CAUSE A SAFETY HAZARD. THESE AREAS MUST BE APPROVED BY THE ENGINEER.
- ANY DAMAGE TO EXISTING CITY OR PRIVATE PROPERTY CAUSED BY THE CONTRACTOR SHALL BE REPAIRED BY THE CONTRACTOR AT NO ADDITIONAL COST TO THE STATE.
- INTERSECTING ROADS SHALL BE RECONSTRUCTED TO THE LIMITS SHOWN ON THE PLANS AND CROSS SECTIONS OR AS DIRECTED BY THE ENGINEER. THE PAVEMENT MAKEUP SHALL BE AS SHOWN ON THE PLANS AND TYPICAL DETAILS.
- THE LIMITS OF CLEARING AND GRUBBING SHALL BE FROM THE EXISTING EDGE OF PAVEMENT TO A LINE TWO FEET BEYOND THE SLOPE LIMIT LESS THE AREA OF EXISTING DRIVEWAYS AND PAVED AREAS TO THE LIMITS SHOWN ON THE PLANS AND TYPICAL SECTIONS OR AS DIRECTED BY THE ENGINEER. WHERE SILT FENCE IS USED, THE CLEARING AND GRUBBING LIMIT SHALL BE THE SILT FENCE LINE. ALL TREES, STUMPS, BRUSH, HEDGES AND ROOTS SHOWN ON THE PLANS NOT DESIGNATED TO REMAIN WITHIN THE CLEARING AND GRUBBING LIMITS WILL NOT BE PAID FOR SEPARTELY BUT WILL BE INCLUDED IN THE UNIT PRICE BID FOR CLEARING AND GRUBBING.
- DURING CLEARING AND GRUBBING OPERATIONS IN THE VICINITY OF THE RANDALL STREET BRIDGE, VEGETATION WILL BE CUT FLUSH WITH THE GROUND. WHERE NECESSARY ROOTS IN THE RETAINING WALL WILL BE CUT FLUSH WITH THE WALL.
- THE CONTRACTOR WILL BE PAID ONCE TO INSTALL AND REMOVE THE TEMPORARY BARRIER. THIS WILL COVER ALL OF THE MOVEMENTS NECESSARY OF THE BARRIER REQUIRED TO COMPLETE CONSTRUCTION.
- THE LOCATION OF EXISTING UNDERGROUND UTILITIES ARE SHOWN IN AN APPROXIMATE WAY ONLY. THE CONTRACTOR SHALL DETERMINE THE EXACT LOCATION OF SUCH UTILITIES BEFORE COMMENCING WORK. THE CONTRACTOR SHALL BE RESPONSIBLE FOR ANY AND ALL DAMAGES THAT MIGHT BE CAUSED BY THE CONTRACTOR'S FAILURE TO LOCATE AND PRESERVE ANY AND ALL UNDERGROUND UTILITIES.
- EXISTING RIM AND INVERT ELEVATIONS FOR UTILITES NOT INDICATED ON THE PLANS SHALL BE DETERMINED IN THE FIELD.
- "DIG SAFE" MUST BE CONTACTED AT LEAST 48 HOURS (WEEKENDS AND HOLIDAYS NOT INCLUDED) PRIOR TO THE START OF OPERATIONS AT 1-888-344-7233.
- TEMPORARY BARRIER AND TEMPORARY CRASH BARRRELS ARE TO BE DELIVERED TO THE RIDOT MAINTENANCE DIVISION STOCKYARD ON WARREN AVENUE IN EAST PROVIDENCE. THE CONTACT PERSON FOR DELIVERY IS DENNIS DOYLE; TEL: 401-433-3112.

GENERAL NOTES - PAVEMENT MARKINGS

- ALL PAVEMENT MARKINGS FOR THIS PROJECT SHALL BE EPOXY RESIN PAVEMENT MARKINGS UNLESS NOTED OTHERWISE.
- THE LOCATION OF PAVEMENT MARKINGS SHALL BE IN ACCORDANCE WITH THE MANUAL ON UNIFORM TRAFFIC CONTROL DEVICES (MUTCD), 2009 EDITION AS AMENDED.

GENERAL NOTES - MAINTENANCE AND PROTECTION OF TRAFFIC

- TEMPORARY CONSTRUCTION SIGNS AND BARRICADES SHALL BE IN PLACE PRIOR TO THE START OF WORK IN ANY SECTION OPEN TO TRAFFIC.
- ALL TEMPORARY CONSTRUCTION SIGNS AND TRAFFIC BARRICADES ARE TO BE REMOVED FROM THE ROADWAY WHEN THEY ARE NOT REQUIRED FOR CONTROL OF TRAFFIC.
- AT NO TIME WILL THE CONES, BARRICADES OR DRUMS BE ALLOWED TO COVER THE LANES OF OR EXTEND INTO AN OPEN LANE.
- THE CONTRACTOR SHALL MAINTAIN ACCESS AND EGRESS TO ALL PROPERTIES AT ALL TIMES. BUSINESSES MUST BE NOTIFIED AT LEAST 48 HOURS IN ADVANCE BEFORE WORK COMMENCES AT THEIR DRIVEWAYS OR ON THEIR PROPERTY.

LANDSCAPE NOTES:

- ALL PLANT MATERIAL MUST BE TAGGED AT THE NURSERY (RECOGNIZED LICENSED GROWER OF PLANT MATERIAL) IN ACCORDANCE WITH R.I. STANDARD SPECIFICATIONS. ALL PLANT MATERIAL MUST BE NURSERY GROWN AND NO PLANTATION MATERIAL WILL BE ACCEPTED.
- ALL PLANT MATERIAL SUBSTITUTIONS AND/OR CHANGES IN PLANT LOCATIONS MUST BE APPROVED IN ACCORDANCE WITH R.I. STANDARD SPECIFICATIONS.
- ALL PLANT MATERIAL SHALL BE FIELD LOCATED IN ACCORDANCE WITH R.I. STANDARD SPECIFICATIONS.
- ALL TREES AND SHRUBS SHALL BE MULCHED WITH PINE BARK MULCH IN ACCORDANCE WITH R.I. STANDARD SPECIFICATIONS.
- ALL TREES AND/OR SHRUBS THAT ARE PLANTED AS A BED SHALL BE MULCHED AS A BED.

LIST OF SHOP DRAWINGS:

THE FOLLOWING LIST OF BRIDGE/STRUCTURAL ITEMS OF WORK FOR WHICH SHOP DRAWINGS AND/OR OTHER SUBMITTALS ARE REQUIRED IS PROVIDED FOR THE CONVENIENCE OF THE CONTRACTOR. THE LIST INCLUDES ONLY THE MAJOR ITEMS OF BRIDGE/STRUCTURAL WORK. IT DOES NOT TIEMIZE ALL SUBMITTALS REQUIRED BY THE CONTRACT DOCUMENTS.

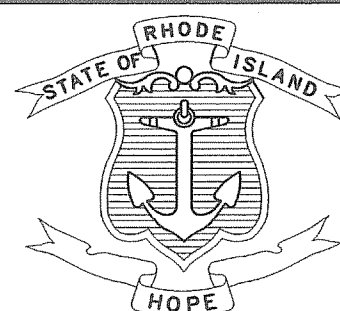
- TEMPORARY SUPPORT FOR UTILITIES.
- SUPERSTRUCTURE AND PARTIAL SUBSTRUCTURE REMOVAL PROCEDURE.
- NEW SUPERSTRUCTURE ERECTION.
- STRUCTURAL STEEL.
- REINFORCEMENT.
- STAY-IN-PLACE FORM FOR DECK.
- BRIDGE RAIL.
- PEDESTRIAN RAIL.
- UTILITIES (WATER, GAS AND HANGERS).
- BRIDGE DEMOLITION
- SEQUENCE OF WORK
- EQUIPMENT
- CONCRETE MIX DESIGN
- PLACING AND POURING SEQUENCE
- CURING PLAN
- ELASTOMERIC BEARINGS
- GRANITE CURB
- BRIDGE JOINT DEVICES
- ERECTION PROCEDURES

DEPARTMENT OF ENVIRONMENTAL MANAGEMENT
OFFICE OF WATER RESOURCES
FRESHWATER WETLANDS PROGRAM
APPROVED WITH CONDITIONS
AS SPECIFIED IN THE LETTER OF APPROVAL
DATED JUL 15 2011 FILE # 11-0106
NO CHANGES ALLOWED WITHOUT PRIOR APPROVAL
APPROVED PLANS MUST BE AT CONSTRUCTION SITE

Charles A. [Signature]

Environmental Management
Office of Water Resources
JUN 29 2011
Environmental Management
Office of Water Resources
JUN 29 2011

rei Prime Engineering, Inc.
142 Putnam Avenue, Johnston, RI 02919
Tel: 401.233.2993 Fax 401.233.2994

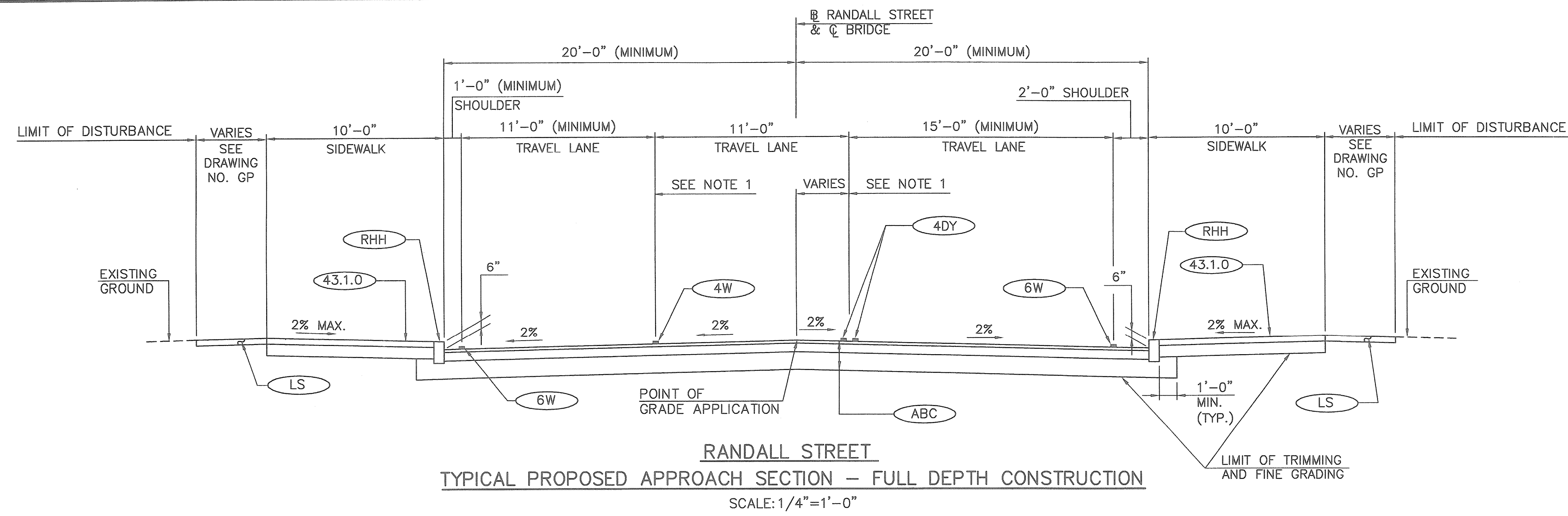


RHODE ISLAND
DEPARTMENT OF TRANSPORTATION

DESIGNED BY:
CHECKED:
DATE: 06-03-11
SHEET 5 OF 43

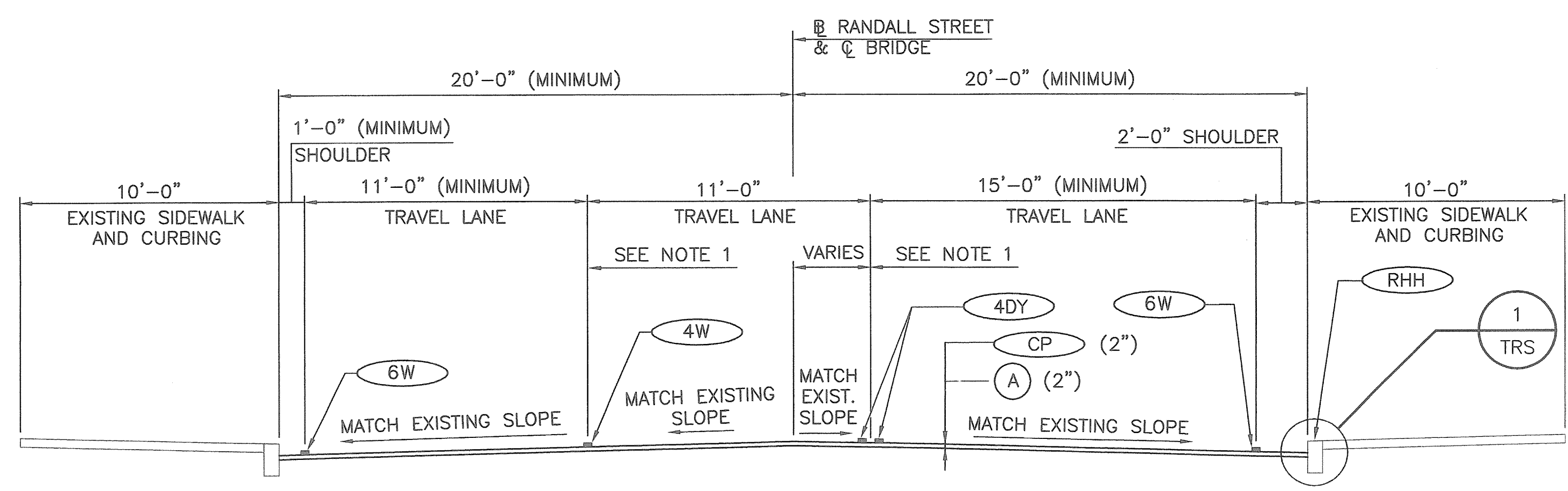
SCALE:		REVISIONS		REVISIONS	
NO.	DATE	BY	NO.	DATE	BY

PROVIDENCE
RANDALL STREET
OVER THE MOSHASSUCK RIVER
BRIDGE NO. 974
JOB SPECIFIC
PLAN SYMBOLS AND NOTES
RHODE ISLAND
DWG. NO.
JSSN

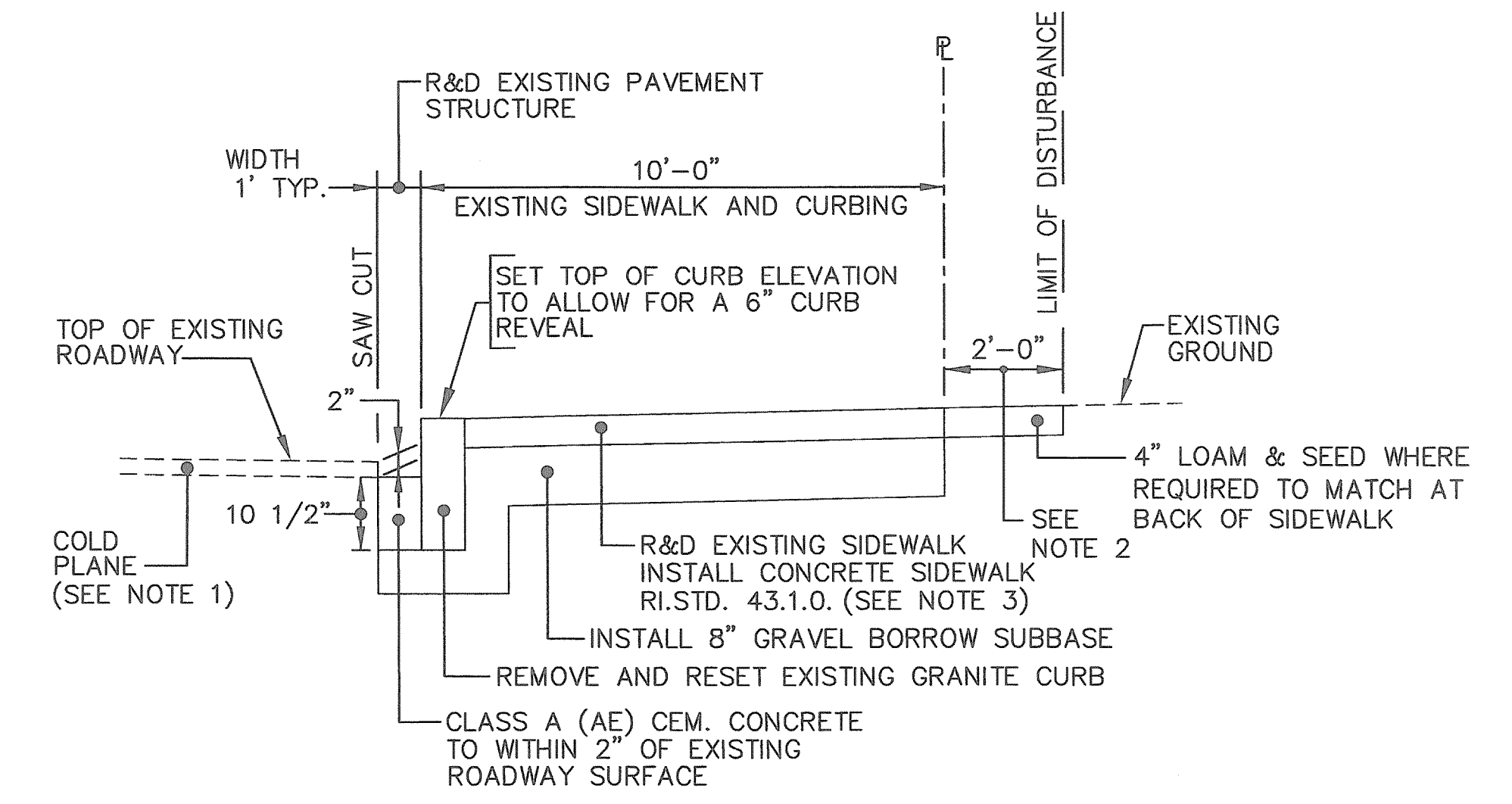


RANDALL STREET
TYPICAL PROPOSED APPROACH SECTION - FULL DEPTH CONSTRUCTION
 SCALE: 1/4"=1'-0"

- NOTES:**
1. NEW CURBING MUST BE INSTALLED PRIOR TO COLD PLANING THE ROADWAY.
 2. THE MATCH LIMITS BEHIND THE SIDEWALK WILL BE 2 FEET UNLESS OTHERWISE NOTED ON THE PLANS.
 3. THE WIDTH OF THE PROPOSED SIDEWALK IS TO MATCH THE EXISTING SIDEWALK WIDTH.



RANDALL STREET
TYPICAL PROPOSED WEST APPROACH SECTION - COLD PLANE AND REPAVE
 SCALE: 1/4"=1'-0"

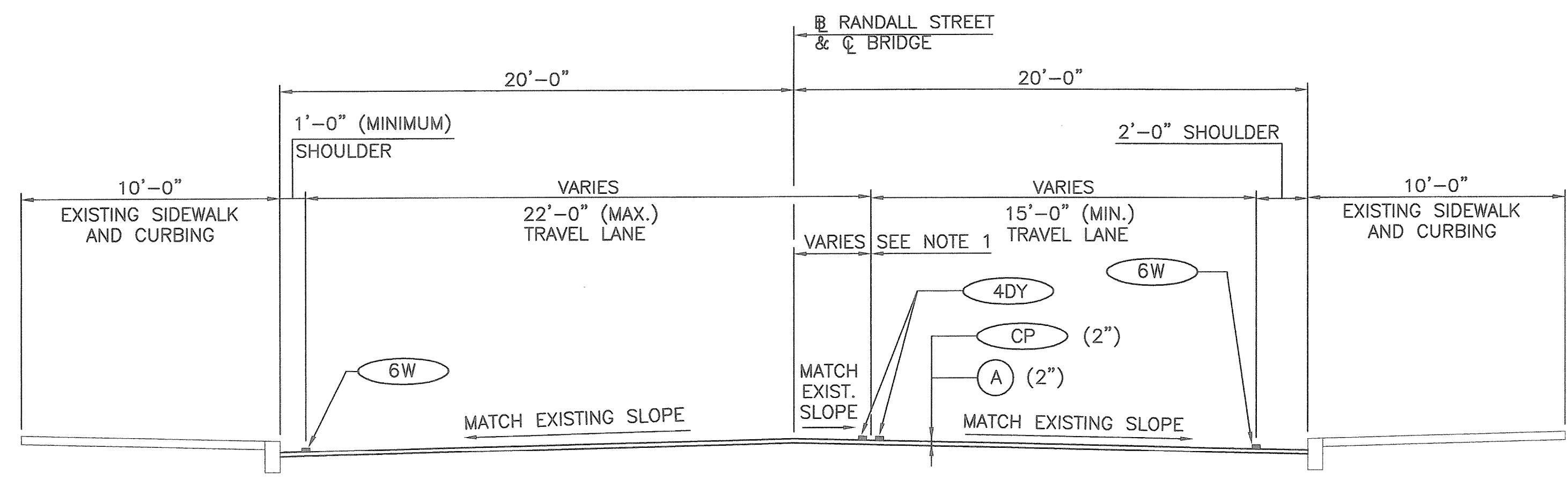


CURB LOCK DETAIL

DETAIL 1
 NOT TO SCALE TRS

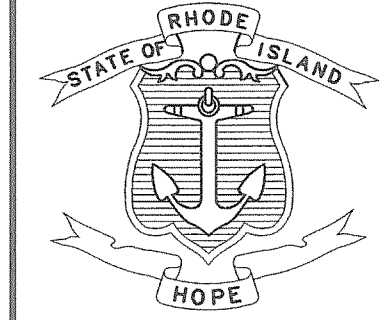
DEPARTMENT OF ENVIRONMENTAL MANAGEMENT
 OFFICE OF WATER RESOURCES
 FRESHWATER WETLANDS PROGRAM
 APPROVED WITH CONDITIONS
 AS SPECIFIED IN THE LETTER OF APPROVAL
 DATED JUL 15 2011 FILE # 11-0106
 NO CHANGES ALLOWED WITHOUT PRIOR APPROVAL
 APPROVED PLANS MUST BE AT CONSTRUCTION SITE

- NOTE:**
1. SEE DWG. NO. PSP FOR LAYOUT OF LANE PAVEMENT MARKINGS



RANDALL STREET
TYPICAL PROPOSED EAST APPROACH SECTION - COLD PLANE AND REPAVE
 SCALE: 1/4"=1'-0"

rei
 142 Putnam Avenue, Johnston, RI 02919
 Tel: 401.233.2993 Fax 401.233.2994
 Prime Engineering, Inc.

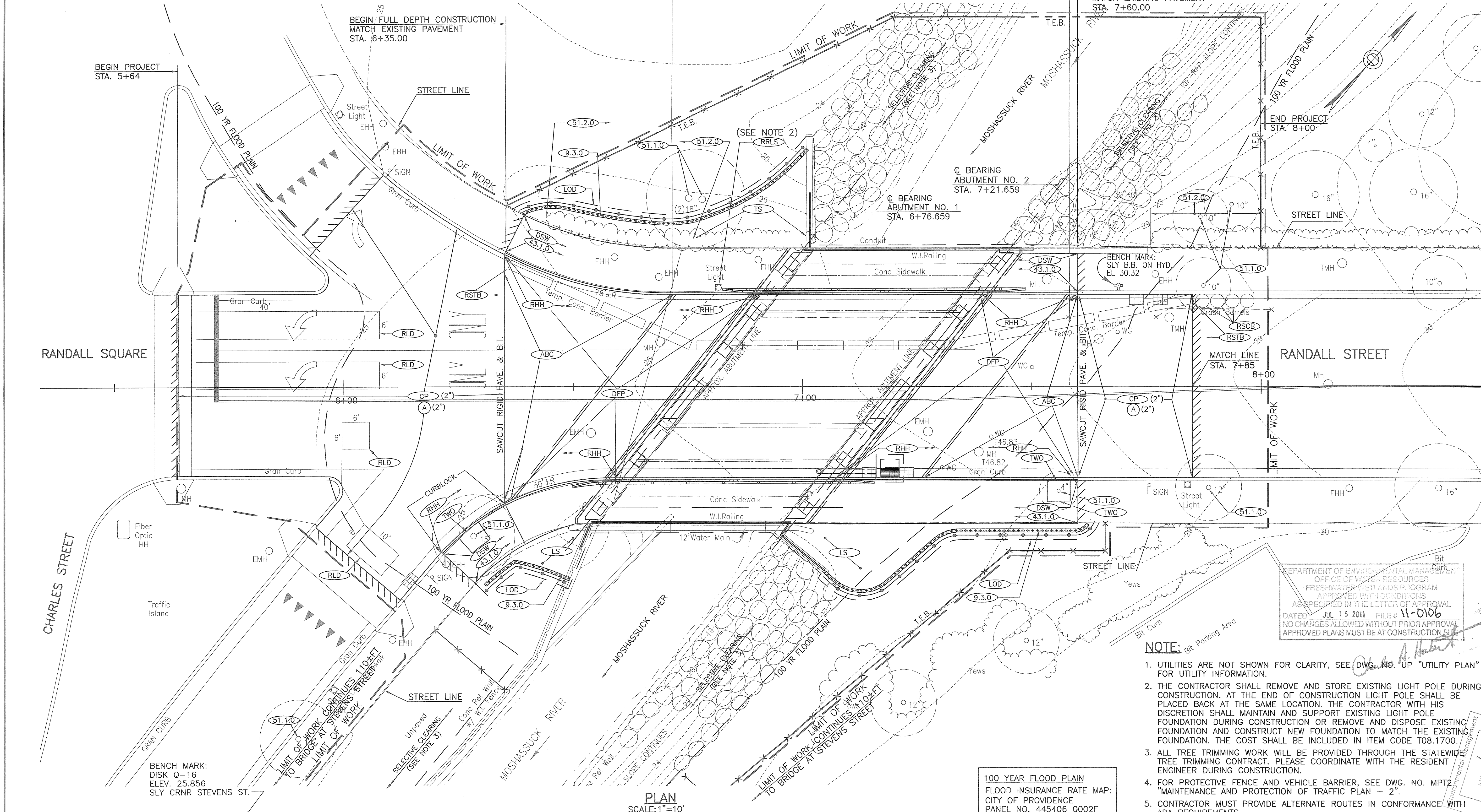


RHODE ISLAND
DEPARTMENT OF TRANSPORTATION

DESIGNED BY: JRK
 CHECKED: NRN
 DATE: 06-03-11
 SHEET 7 OF 43

SCALE: AS NOTED	
REVISIONS	
NO.	DATE

RANDALL STREET
OVER THE MOSHASSUCK RIVER
BRIDGE NO. 974
 PROVIDENCE RHODE ISLAND
TYPICAL ROADWAY SECTIONS
 DWG. NO. TRS



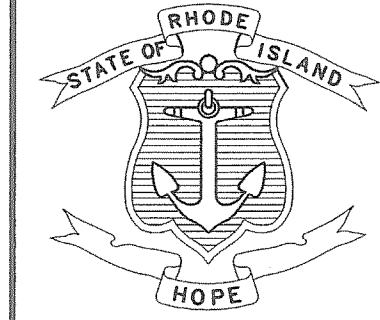
PLAN
SCALE: 1"=10'

100 YEAR FLOOD PLAIN
FLOOD INSURANCE RATE MAP:
CITY OF PROVIDENCE
PANEL NO. 445406 0002F
DATE: JUNE 6, 2000

DEPARTMENT OF ENVIRONMENTAL MANAGEMENT
OFFICE OF WATER RESOURCES
FRESHWATER WETLANDS PROGRAM
APPROVED WITH CONDITIONS
AS SPECIFIED IN THE LETTER OF APPROVAL
DATED JUL 15 2011 FILE # 11-D106
NO CHANGES ALLOWED WITHOUT PRIOR APPROVAL
APPROVED PLANS MUST BE AT CONSTRUCTION SITE

- NOTE:**
- UTILITIES ARE NOT SHOWN FOR CLARITY, SEE DWG. NO. "UP" "UTILITY PLAN" FOR UTILITY INFORMATION.
 - THE CONTRACTOR SHALL REMOVE AND STORE EXISTING LIGHT POLE DURING CONSTRUCTION. AT THE END OF CONSTRUCTION LIGHT POLE SHALL BE PLACED BACK AT THE SAME LOCATION. THE CONTRACTOR WITH HIS DISCRETION SHALL MAINTAIN AND SUPPORT EXISTING LIGHT POLE FOUNDATION DURING CONSTRUCTION OR REMOVE AND DISPOSE EXISTING FOUNDATION AND CONSTRUCT NEW FOUNDATION TO MATCH THE EXISTING FOUNDATION. THE COST SHALL BE INCLUDED IN ITEM CODE T08.1700.
 - ALL TREE TRIMMING WORK WILL BE PROVIDED THROUGH THE STATEWIDE TREE TRIMMING CONTRACT. PLEASE COORDINATE WITH THE RESIDENT ENGINEER DURING CONSTRUCTION.
 - FOR PROTECTIVE FENCE AND VEHICLE BARRIER, SEE DWG. NO. MPT2 "MAINTENANCE AND PROTECTION OF TRAFFIC PLAN - 2".
 - CONTRACTOR MUST PROVIDE ALTERNATE ROUTES IN CONFORMANCE WITH ADA REQUIREMENTS.
 - NO GRADE CHANGES ARE BEING PROPOSED AND ALL CONDITIONS OF RIDEM WETLAND RULE 6.01 WILL BE COMPLIED WITH.

Rei
Prime Engineering, Inc.
142 Putnam Avenue, Johnston, RI 02919
Tel: 401.233.2993 Fax 401.233.2994



RHODE ISLAND
DEPARTMENT OF TRANSPORTATION

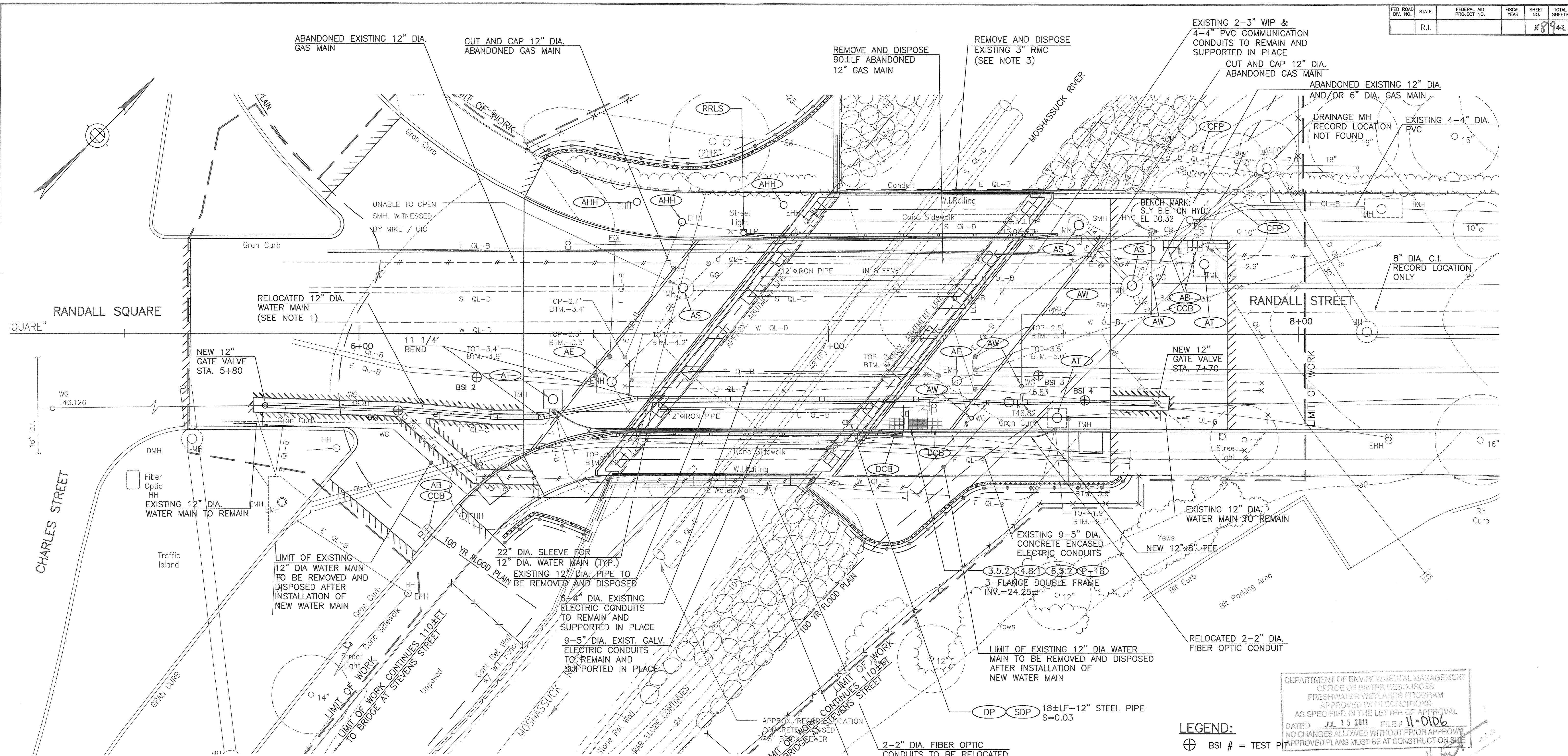
DESIGNED BY: JRK
CHECKED: NRN
DATE: 06-03-11
SHEET 8 OF 43

SCALE: AS NOTED					
REVISIONS			REVISIONS		
NO.	DATE	BY	NO.	DATE	BY

RANDALL STREET
OVER THE MOSHASSUCK RIVER
BRIDGE NO. 974

GENERAL PLAN

RHODE ISLAND
DWG. NO.
GP



- NOTES:**
1. THE NEW 12" DIAMETER WATER MAIN SHALL BE FURNISHED WITH RESTRAINED JOINTS. SEE SPECIAL PROVISION.
 2. EXISTING WATER MAIN TO NEW WATER MAIN CONNECTION SHALL BE PERFORMED WITH "FRICTION RESTRAINTS" AS MANUFACTURED BY STAR NATIONAL PRODUCTS OR APPROVED EQUAL. SEE SPECIAL PROVISION.
 3. OWNERSHIP OF EXISTING 3" RMC IS NOT KNOWN. CONTRACTOR SHALL VERIFY WITH DIG SAFE BEFORE REMOVAL OF THIS RMC THAT IS NOT ACTIVE. IF IT IS FOUND THAT THIS CONDUIT IS ACTIVE, THEN IT SHOULD BE TEMPORARILY SUPPORTED AND RELOCATED WITHIN THE STRUCTURE WITH 2-3" WIP AND 4-4" PVC COMMUNICATION CONDUITS. NO SEPARATE PAYMENT SHALL BE MADE FOR THIS WORK TO SUPPORT AND RELOCATE THIS RMC SHALL BE PAID UNDER A FORCE ACCOUNT.
 4. REMOVE AND DISPOSE PIPE ALL SIZES, SHALL BE PAID UNDER ITEM CODE 803.9901-REMOVE AND DISPOSE EXISTING STRUCTURE.
 5. NO GRADE CHANGES ARE BEING PROPOSED AND ALL CONDITIONS OF RIDEM WETLAND RULE 6.01 WILL BE COMPLIED WITH.

PLAN
SCALE: 1"=10'

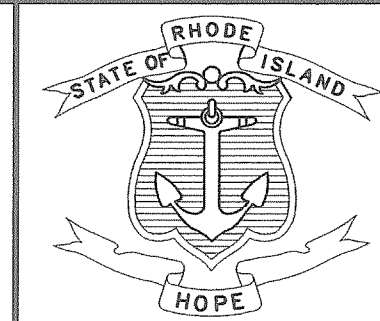
LEGEND:
⊕ BSI # = TEST PIT

BSI #	UTILITY	GRADE EL.	UTILITY EL.
1	12" WATER	25.1	20.6
2	ELECTRIC	25.2	22.6
3	ELECTRIC	27.5	24.3
4	12" WATER	27.7	23.9
4	3"Ø ELECTRIC	27.7	25.6

BENCHMARK DISK - STEVENS STREET EL.25.86

DEPARTMENT OF ENVIRONMENTAL MANAGEMENT
OFFICE OF WATER RESOURCES
FRESHWATER WETLANDS PROGRAM
APPROVED WITH CONDITIONS
AS SPECIFIED IN THE LETTER OF APPROVAL
DATED JUL 15 2011 FILE # 11-0106
NO CHANGES ALLOWED WITHOUT PRIOR APPROVAL
APPROVED PLANS MUST BE AT CONSTRUCTION SITE

Rei
Prime Engineering, Inc.
142 Putnam Avenue, Johnston, RI 02919
Tel: 401.233.2993 Fax 401.233.2994



RHODE ISLAND
DEPARTMENT OF TRANSPORTATION

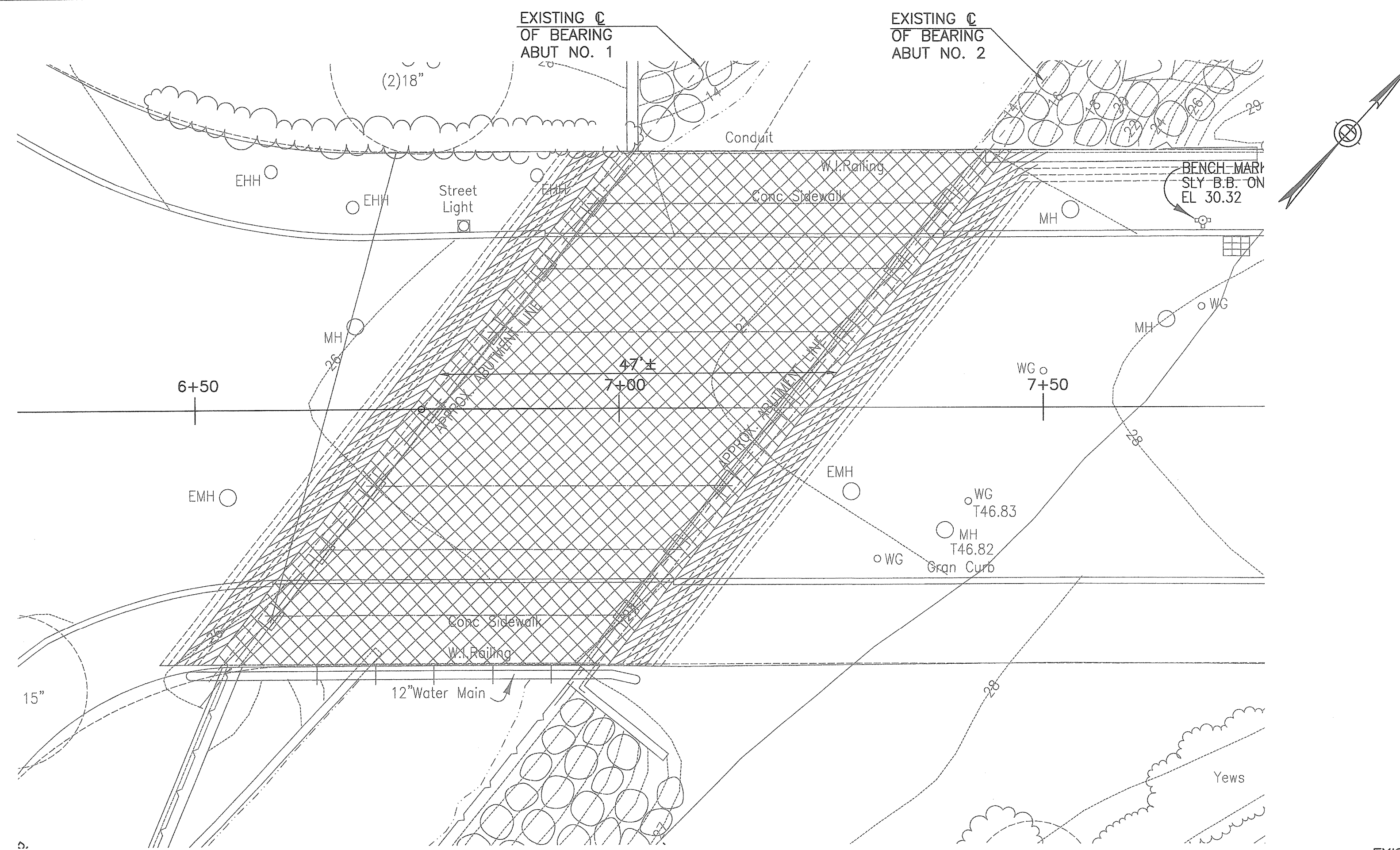
DESIGNED BY: JRK
CHECKED: NRN
DATE: 06-03-11
SHEET 9 OF 43

SCALE: AS NOTED					
REVISIONS			REVISIONS		
NO.	DATE	BY	NO.	DATE	BY

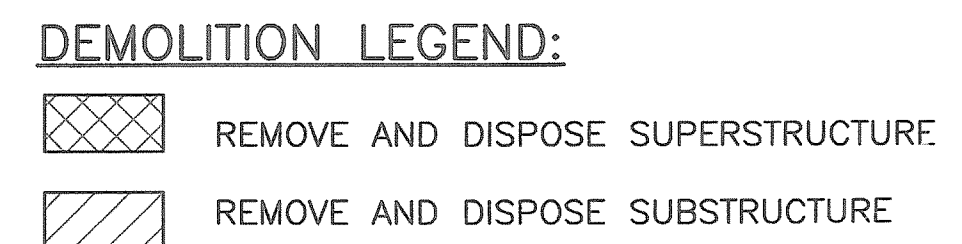
RANDALL STREET
OVER THE MOSHASSUCK RIVER
BRIDGE NO. 974

UTILITY PLAN

RHODE ISLAND
DWG. NO.
UP



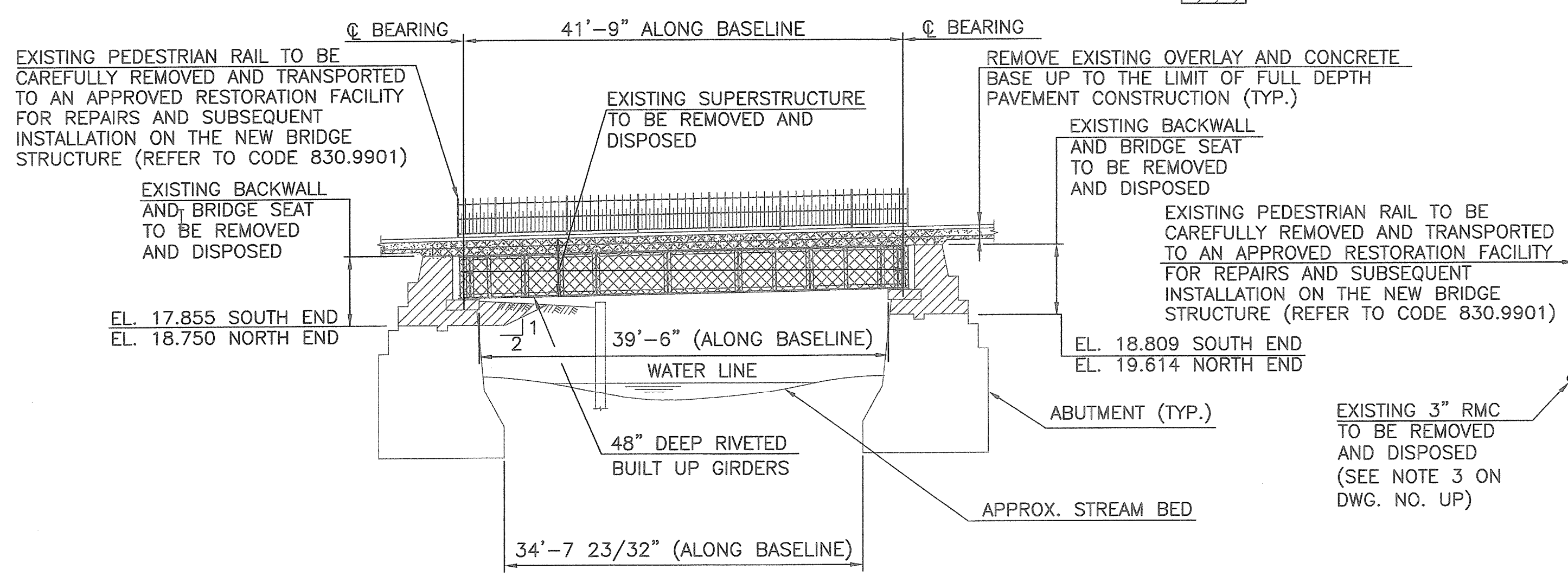
PLAN
SCALE: 1"=10'



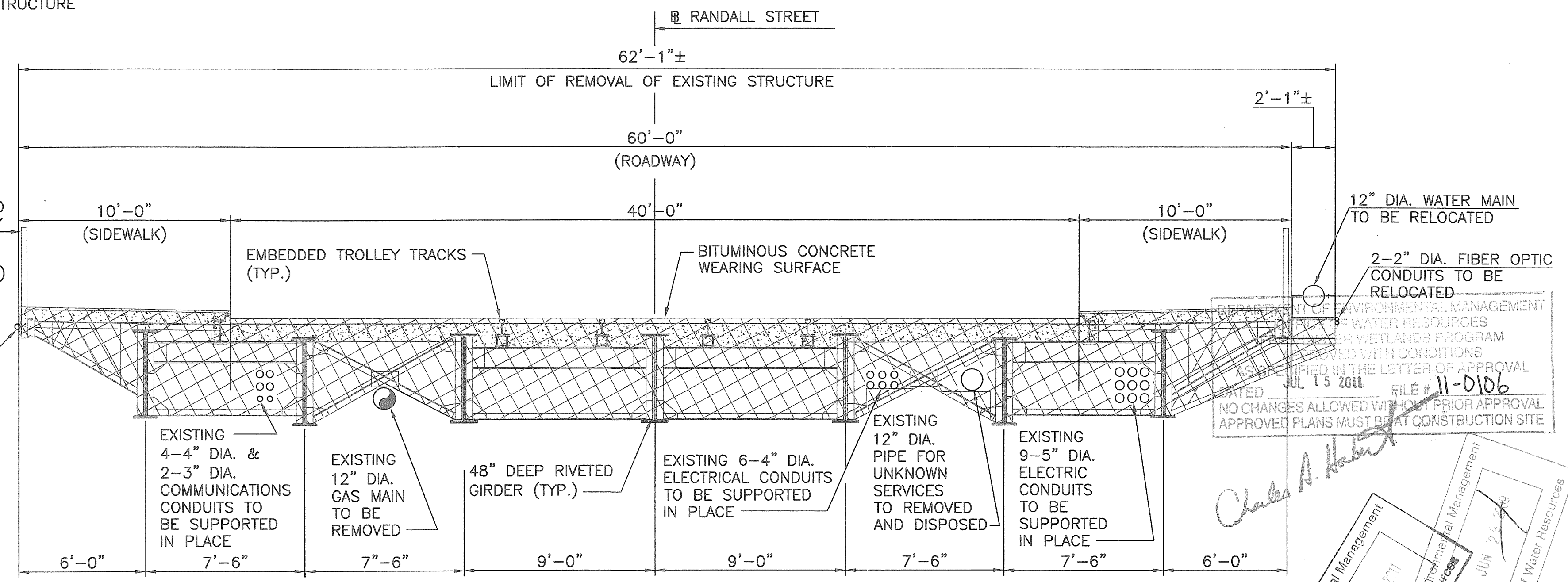
DEMOLITION NOTES:

1. THE CONTRACTOR SHALL SUBMIT TO THE DEPARTMENT, FOR APPROVAL BY THE ENGINEER, THE DESIGN AND DETAIL OF REMOVAL AND DISPOSAL OF EXISTING SUPERSTRUCTURE AND SUBSTRUCTURE, PREPARED BY A REGISTERED P.E. IN THE STATE OF RHODE ISLAND AND SHALL NOT BEGIN WORK UNTIL THIS APPROVAL IS OBTAINED IN WRITING.
2. FOR SUPERSTRUCTURE AND SUBSTRUCTURE REMOVAL THE CONTRACTOR SHALL PROVIDE SHIELDS TO PREVENT ANY DEBRIS OR TOOLS ENCRANCHING INTO THE RIVER. THE CONTRACTOR SHALL SUBMIT TO THE DEPARTMENT FOR APPROVAL BY THE ENGINEER, THE DESIGN AND DETAIL OF THE SHIELDS AND SHALL NOT BEGIN WORK UNTIL THIS APPROVAL IS OBTAINED IN WRITING. THIS APPROVAL BY THE ENGINEER SHALL NOT RELIEVE CONTRACTOR OF ANY OF HIS RESPONSIBILITIES. THE COST SHALL BE INCLUDED IN ITEM CODE 803.9901.
3. THE CONTRACTOR IS HEREBY NOTIFIED THAT EXISTING PAINT SYSTEMS ON THIS BRIDGE MAY CONTAIN TOXIC SUBSTANCES SUCH AS LEAD OR CHROMIUM, AND THAT THESE SUBSTANCES MAY BE CONSIDERED HAZARDOUS WASTES WHEN REMOVED. ALL WORK ASSOCIATED WITH THE REMOVAL, HANDLING, AND DISPOSAL OF TOXIC SUBSTANCES, AND ANY REQUIRED DISPOSAL COSTS OR PERSONNEL PROTECTION, SHALL BE IN ACCORDANCE WITH THE APPLICABLE SUBSECTIONS OF SECTION 826 OF THE RHODE ISLAND STANDARD SPECIFICATIONS FOR ROAD AND BRIDGE CONSTRUCTION, AND SHALL BE CONSIDERED INCIDENTAL. THE COST IS INCLUDED IN THE ITEM CODE 803.9901..
4. NO GRADE CHANGES ARE BEING PROPOSED AND ALL CONDITIONS OF RIDEM WETLAND RULE 6.01 WILL BE COMPLIED WITH.

EXISTING PEDESTRIAN RAIL TO BE CAREFULLY REMOVED AND TRANSPORTED TO AN APPROVED RESTORATION FACILITY FOR REPAIRS AND SUBSEQUENT INSTALLATION ON THE NEW BRIDGE STRUCTURE (REFER TO CODE 830.9901)



EXISTING SOUTH BRIDGE ELEVATION AT GIRDER FASCIA
SCALE: 1"=10'



EXISTING BRIDGE SECTION
(FROM EXISTING PLAN)
SCALE: 1/4"=1'-0"

DEPARTMENT OF ENVIRONMENTAL MANAGEMENT
RIVER WETLANDS PROGRAM
APPROVED WITH CONDITIONS
AS SPECIFIED IN THE LETTER OF APPROVAL
JUL 13 2011
FILE # 11-D106
NO CHANGES ALLOWED WITHOUT PRIOR APPROVAL
APPROVED PLANS MUST BE AT CONSTRUCTION SITE

Charles A. Hackett
Environmental Management
JUN 20 2011
Environmental Management
JUN 25 2011
Office of Water Resources

 142 Putnam Avenue, Johnston, RI 02919 Tel: 401.233.2993 Fax 401.233.2994 Prime Engineering, Inc.	 RHODE ISLAND DEPARTMENT OF TRANSPORTATION	DESIGNED BY: JRK CHECKED: NRN DATE: 06-03-11 SHEET: 16 OF 43	SCALE: AS NOTED <table border="1"> <thead> <tr> <th colspan="3">REVISIONS</th> <th colspan="3">REVISIONS</th> </tr> <tr> <th>NO.</th> <th>DATE</th> <th>BY</th> <th>NO.</th> <th>DATE</th> <th>BY</th> </tr> </thead> <tbody> <tr><td> </td><td> </td><td> </td><td> </td><td> </td><td> </td></tr> <tr><td> </td><td> </td><td> </td><td> </td><td> </td><td> </td></tr> <tr><td> </td><td> </td><td> </td><td> </td><td> </td><td> </td></tr> </tbody> </table>	REVISIONS			REVISIONS			NO.	DATE	BY	NO.	DATE	BY																			RANDALL STREET OVER THE MOSHASSUCK RIVER BRIDGE NO. 974 PROVIDENCE DEMOLITION PLAN DWG. NO. DP
		REVISIONS			REVISIONS																													
NO.	DATE	BY	NO.	DATE	BY																													
RHOISE ISLAND DEPARTMENT OF TRANSPORTATION RANDALL STREET OVER THE MOSHASSUCK RIVER BRIDGE NO. 974 DEMOLITION PLAN DWG. NO. DP		0154C_V1_016A_DEMO																																