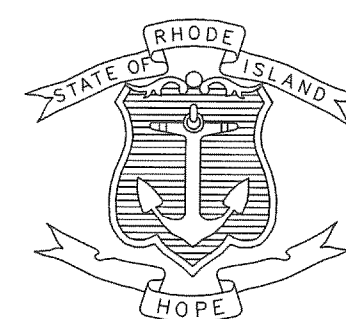


| FED. ROAD DIV. NO. | STATE | FEDERAL AID PROJECT NO. | FISCAL YEAR | SHEET NO. | TOTAL SHEETS |
|--------------------|-------|-------------------------|-------------|-----------|--------------|
| | RI | | | 1 | 21 |

INDEX

| SHEET NO. | DESCRIPTION |
|-----------|---|
| 1 | COVER SHEET |
| 2 | STANDARD PLAN SYMBOLS & STANDARD LEGEND |
| 3 & 4 | STANDARD NOTES 1 & 2 |
| 5 | JOB SPECIFIC SYMBOLS, LEGEND AND NOTES |
| 6 | TYPICAL SECTION |
| 7 - 21 | GENERAL PLANS 1 - 15 |

STATE OF RHODE ISLAND



DEPARTMENT OF TRANSPORTATION

PLAN OF PROPOSED STATE HIGHWAY

1R HIGHWAY IMPROVEMENTS TO CENTRAL AVENUE / SUNSET AVENUE

KILLINGLY STREET TO ATWOOD AVENUE

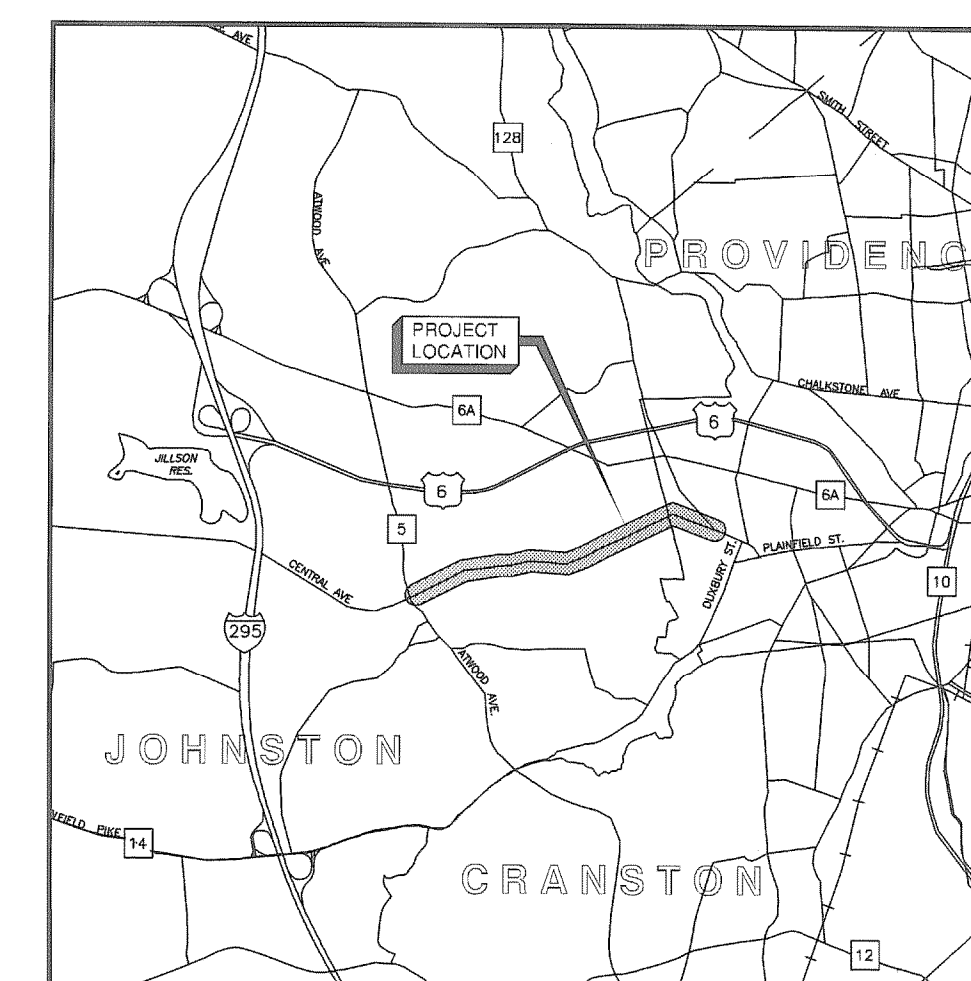
TOWN OF JOHNSTON / CITY OF PROVIDENCE
COUNTY OF PROVIDENCE

R.I. CONTRACT NO. F.A. PROJECT NO.

PAVEMENT STRUCTURE

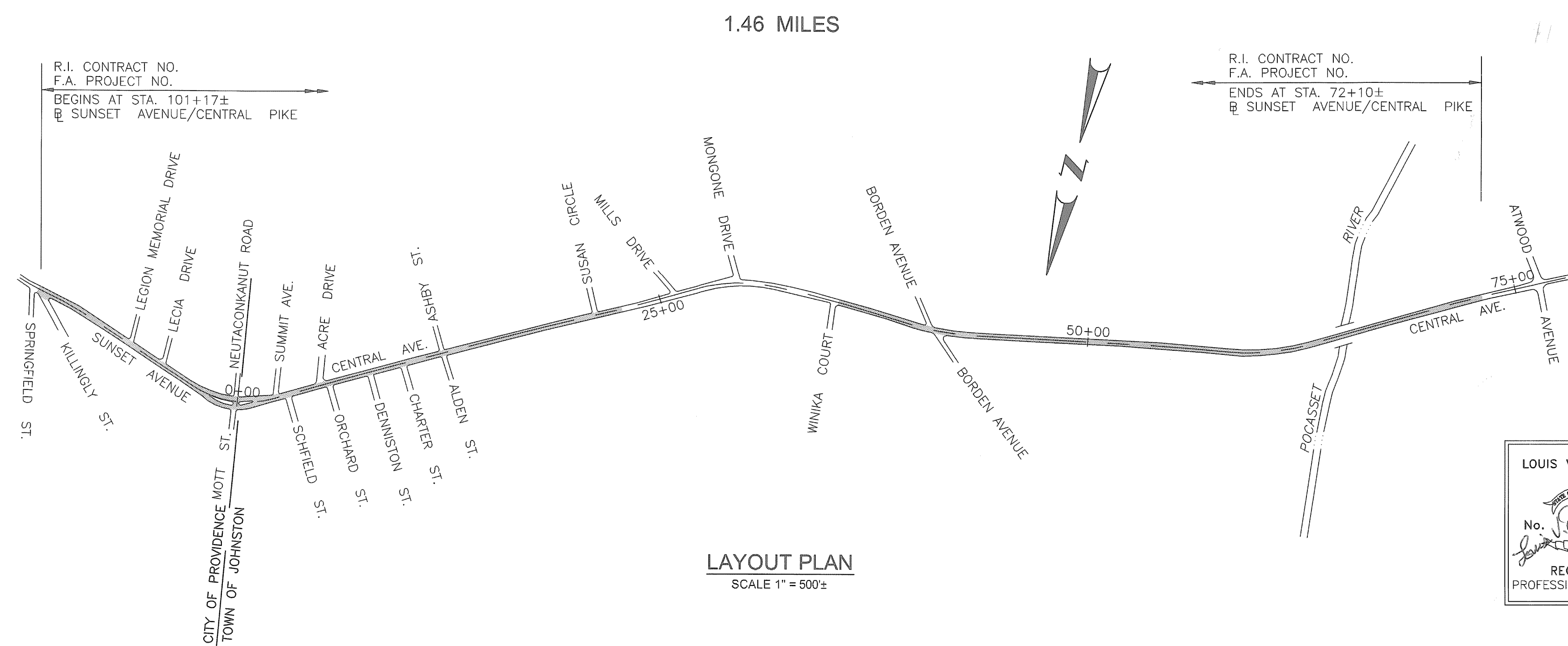
2" BITUMINOUS CONCRETE SURFACE COURSE

R.I. STANDARD SPECIFICATIONS AND STANDARD DETAILS.
SPECIFICATIONS TO GOVERN THIS PROJECT ARE THE R.I. STANDARD SPECIFICATIONS FOR ROAD AND BRIDGE CONSTRUCTION, 2004 EDITION, AND THE STATE AND FEDERAL SPECIAL PROVISIONS INCLUDED IN THE CONTRACT DOCUMENTS. STANDARD DETAILS FOR THIS PROJECT ARE R.I. STANDARD DETAILS, 1998 EDITION, WITH ALL REVISIONS.

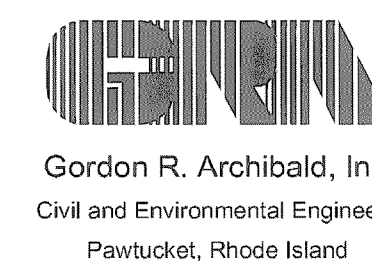


LOCATION MAP
SCALE 1" = 1 MILE

| DESIGN | DESIGNATION |
|------------|--------------|
| AADT(2005) | 4,000 V.P.D. |
| D | 50/50 |
| K | 11% |



SCALES OF DRAWINGS
Plans 1 inch = 20 feet



LOUIS V. DILUCCHIO
No. 4081
REGISTERED PROFESSIONAL ENGINEER

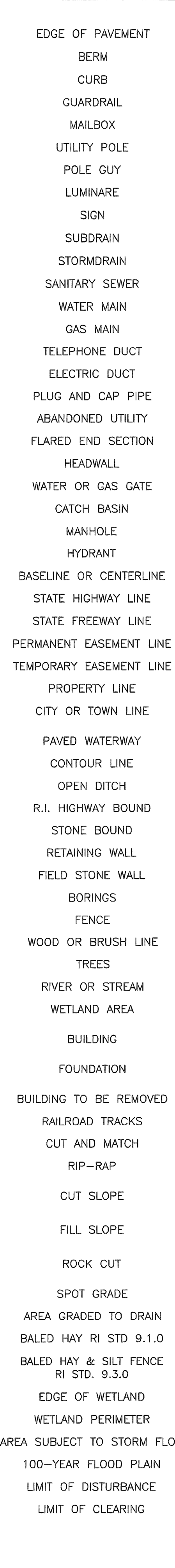
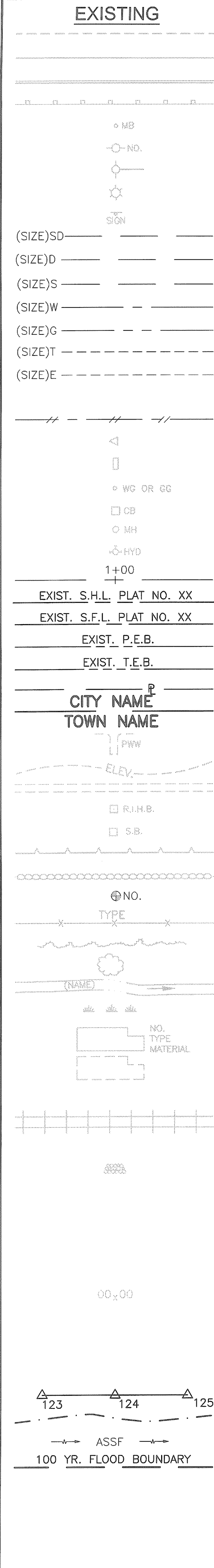
DEPARTMENT OF ENVIRONMENTAL MANAGEMENT
OFFICE OF WATER RESOURCES
FRESHWATER WETLANDS PROGRAM
REVIEWED SITE PLAN APPLICATION NO.: 11-0124
DATED JUL 23 2011
SEE LETTER OF SAME DATE.

WETLAND SUBMISSION JUNE, 2011

| | |
|--|------|
| R.I. DEPARTMENT OF TRANSPORTATION | |
| APPROVED | DATE |
| DEPUTY CHIEF ENGINEER | DATE |
| APPROVED | DATE |
| CHIEF ENGINEER | DATE |
| APPROVED | DATE |
| DIRECTOR | DATE |
| DEPARTMENT OF TRANSPORTATION FEDERAL HIGHWAY ADMINISTRATION | |
| APPROVED | DATE |
| DIVISION ADMINISTRATOR | DATE |

Contract Number _____
Number of Sheet 1
Total Sheets 21

| FED. ROAD DIV. NO. | STATE | FEDERAL AID PROJECT NO. | FISCAL YEAR | SHEET NO. | TOTAL SHEETS |
|--------------------|-------|-------------------------|-------------|-----------|--------------|
| 1 | R.I. | | | 2 | 26 |



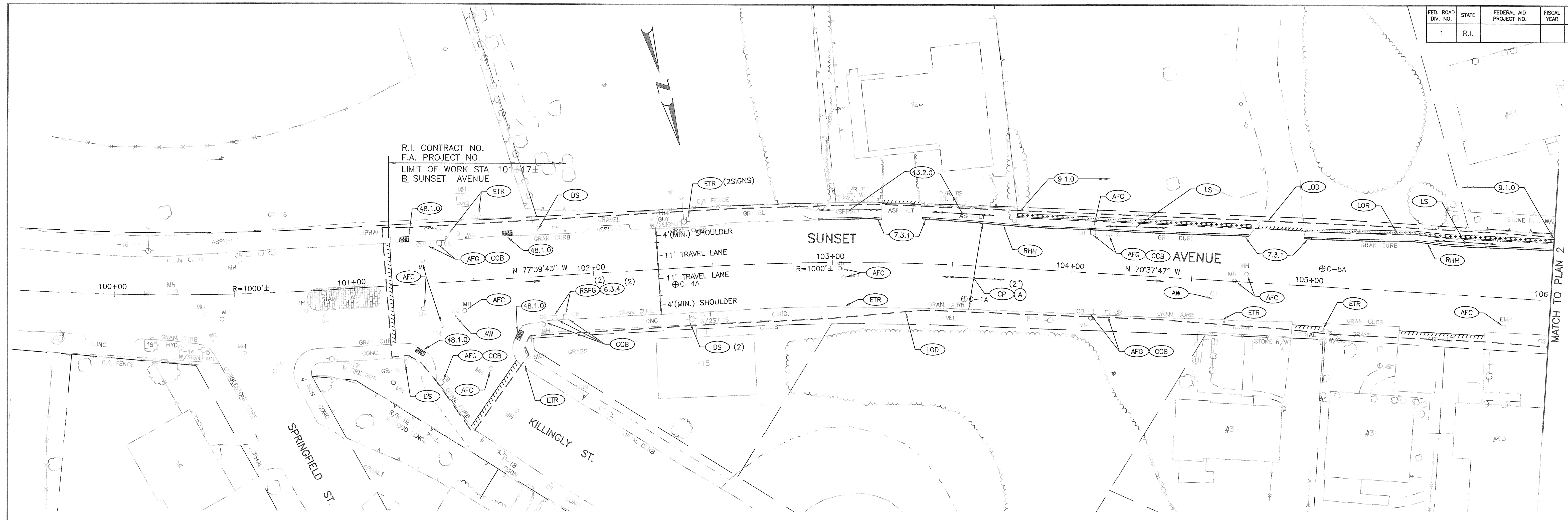
| | | | |
|--------------|--|--------------|--|
| 1.1.0 | UNDERDRAIN | 7.4.2 | GRANITE TRANSITION CURB (VERTICAL FACE TO SLOPE FACE) |
| 1.3.0 | CONCRETE CONNECTING COLLAR | 7.5.0 | BITUMINOUS CONCRETE LIP CURB |
| 2.1.0 | CONCRETE HEADWALLS FOR PIPE CULVERTS | 7.5.1A | BITUMINOUS BERM (CONSTRUCTION METHOD A) |
| 2.2.0 | STANDARD HEADWALLS FOR MULTIPLE 3'-6" TO 7'-0" PIPE CULVERTS | 7.5.1B | BITUMINOUS BERM (CONSTRUCTION METHOD B) |
| 2.3.0 (DIA.) | PRECAST CONCRETE FLARED END SECTION | 7.6.0 | CURB SETTING DETAIL |
| 3.2.0 | BRICK/SOLID BLOCK 4'-0" ROUND MANHOLE | 8.2.0 | BITUMINOUS CONCRETE DITCH |
| 3.2.1 (DIA.) | BRICK/SOLID BLOCK 5'-0" OR 6'-0" ROUND MANHOLE | 8.3.0 | RIP-RAP DITCH |
| 3.3.0 | BRICK/SOLID BLOCK TYPE "D" SQUARE CATCH BASIN | 8.4.0 | PAVED WATERWAY |
| 3.3.2 | BRICK/SOLID BLOCK TYPE "F" SQUARE CATCH BASIN | 9.1.0 | BALED HAY EROSION CHECK |
| 3.3.3 | SOLID BLOCK FLUSH SQUARE CATCH BASIN | 9.2.0 | SILT FENCE DETAIL |
| 3.4.0 | BRICK/SOLID BLOCK TYPE "D" ROUND CATCH BASIN | 9.3.0 | BALED HAY DITCH EROSION CHECK AND SILT FENCE COMBINED |
| 3.4.1 | BRICK/SOLID BLOCK ROUND CATCH BASIN WITH GUTTER INLET | 9.4.0 | BALED HAY DITCH AND SWALE EROSION CHECK |
| 3.4.2 | BRICK/SOLID BLOCK TYPE "F" ROUND CATCH BASIN | 9.5.0 | LOG AND HAY CHECK DAM |
| 3.4.3 | BRICK/SOLID BLOCK TYPE "R" CATCH BASIN | 9.7.0 | DEWATERING BASIN |
| 3.4.4 | SOLID BLOCK FLUSH ROUND CATCH BASIN | 9.8.0 | BALED HAY CATCH BASIN INLET PROTECTION |
| 3.4.5 (DIA.) | BRICK/SOLID BLOCK 5'-0" OR 6'-0" ROUND CATCH BASIN | 9.9.0 | CONSTRUCTION ACCESS |
| 3.5.0 | SOLID BLOCK SHALLOW TYPE "F" SQUARE CATCH BASIN | 10.1.0 | WET STONE MASONRY RETAINING WALL |
| 3.5.1 (SIZE) | SOLID BLOCK SHALLOW 5'-0" OR 6'-0" SQUARE CATCH BASIN | 10.2.0 | RUBBLE MASONRY WALL |
| 3.6.0 | BRICK/SOLID BLOCK DROP INLET | 10.3.0 | CONCRETE RETAINING WALL |
| 3.7.0 (DIA.) | BRICK/SOLID BLOCK ROUND MANHOLE OR CATCH BASIN GREATER THAN 12'-0" | 10.4.0 | STONE MASONRY STEPS |
| 4.2.0 | PRECAST 4'-0" ROUND MANHOLE | 14.1.0 | CONCRETE HIGHWAY BOUND |
| 4.2.1 | PRECAST 5'-0" ROUND MANHOLE | 15.1.0 | POST AND MOUNTINGS FOR RURAL MAILBOX |
| 4.2.2 | PRECAST 6'-0" ROUND MANHOLE | 15.2.0 (NO.) | POST AND MULTIPLE MOUNTINGS FOR RURAL MAILBOXES |
| 4.3.0 (SIZE) | PRECAST 4'-0" OR 6'-0" SQUARE MANHOLE OR CATCH BASIN | 18.2.0 | PRECAST TYPE "A" HANDHOLE |
| 4.4.0 (DIA.) | PRECAST 4'-0", 5'-0", OR 6'-0" ROUND CATCH BASIN | 18.2.2 | HEAVY DUTY TYPE "H" HANDHOLE |
| 4.5.0 | PRECAST CONCRETE DROP INLET | 18.3.0 | ALUMINUM LIGHTING STANDARDS |
| 4.5.1 | PRECAST CONCRETE DROP INLET LATERAL OUTLET | 20.2.0 | BI-DIRECTIONAL CONTROL DEVICE |
| 4.5.2 | PRECAST CONCRETE DROP INLET LONGITUDINAL OUTLET | 24.6.1 | STREET SIGN MOUNTING DETAIL |
| 5.3.0 | CATCH BASIN AND MANHOLE STEP | 26.2.0 | POLYETHYLENE DRUM WITH MARKINGS |
| 5.4.0 | CONCRETE COLLARS | 26.3.0 | PVC PLASTIC PIPE TYPE III BARRICADE |
| 6.1.0 | LIGHT-DUTY SQUARE FRAME AND ROUND COVER | 31.1.0 | CHAIN LINK FENCE 3'-0" TO 4'-0" |
| 6.1.1 | HEAVY DUTY SQUARE FRAME AND ROUND COVER | 31.2.0 | CHAIN LINK FENCE 5'-0" TO 6'-0" |
| 6.2.0 | LIGHT-DUTY ROUND FRAME AND COVER | 31.2.1 | CHAIN LINK FENCE 5'-0" TO 6'-0" INTERMEDIATE POST |
| 6.2.1 | HEAVY-DUTY ROUND FRAME AND COVER | 31.3.0 | WOVEN WIRE RIGHT-OF-WAY FENCE (STEEL POST) |
| 6.3.0 | SQUARE FRAME AND GRATE | 34.1.0 | TYPICAL GUARDRAIL INSTALLATION |
| 6.3.1 | SQUARE FRAME AND GRATE | 34.2.0 | STEEL BEAM GUARDRAIL |
| 6.3.2 | SQUARE FRAME AND GRATE (BICYCLE SAFE) | 34.2.1 | STEEL BEAM GUARDRAIL DETAILS |
| 6.3.3 | HIGH CAPACITY FRAME AND GRATE | 34.2.2 | STEEL BEAM GUARDRAIL DOUBLE FACED ASSEMBLY |
| 6.3.4 | HIGH CAPACITY FRAME AND GRATE (BICYCLE SAFE) | 34.2.3 | STEEL BEAM GUARDRAIL FIXTURES |
| 6.4.0 | ROUND FRAME AND GRATE | 34.2.5 | STEEL BEAM GUARDRAIL REFLECTORIZED TRIANGULAR DELINEATOR |
| 7.1.0S | PRECAST CONCRETE CURB (STRAIGHT) | 34.3.1 | GUARDRAIL END SECTION |
| 7.1.0C | PRECAST CONCRETE CURB (CIRCULAR) | 34.3.2 | TERMINAL END SECTION (SINGLE FACE) |
| 7.1.1 | 3'-0" PRECAST CONCRETE TRANSITION CURB | 34.3.3 | ANCHORAGE DETAILS APPROACH END SECTION |
| 7.1.2 | 6'-0" PRECAST CONCRETE TRANSITION CURB | 34.3.4 | ANCHORAGE DETAILS TRAILING END SECTION |
| 7.1.4 | PRECAST 2'-0" RADIUS CORNER | 34.4.0 | STEEL BACKED TIMBER GUARDRAIL |
| 7.1.5 | PRECAST CONCRETE INLET STONE (FOR SQUARE CATCH BASIN) | 34.4.1 | STEEL BACKED TIMBER GUARDRAIL TERMINAL SECTION-TYPE 1 |
| 7.1.6 | PRECAST CONCRETE INLET STONE (FOR ROUND CATCH BASIN) | 40.1.0 | DOUBLE-FACED PRECAST MEDIAN BARRIER |
| 7.1.7 | PRECAST CONCRETE APRON STONE (FOR SQUARE CATCH BASIN) | 40.2.0 | SINGLE-FACED PRECAST MEDIAN BARRIER |
| 7.1.8 | PRECAST CONCRETE APRON STONE (FOR ROUND CATCH BASIN) | 40.2.1 | SINGLE-FACED PRECAST MEDIAN BARRIER |
| 7.2.0S | PRECAST CONCRETE SLOPED FACE CURB (STRAIGHT) | 40.3.0 | PRECAST MEDIAN BARRIER TRANSITION UNIT |
| 7.2.0C | PRECAST CONCRETE SLOPED FACE CURB (CIRCULAR) | 40.5.0 | PRECAST MEDIAN BARRIER FOR TEMPORARY TRAFFIC CONTROL |
| 7.2.1 | PRECAST CONCRETE SLOPED FACE TRANSITION CURB | 43.1.0 | CEMENT CONCRETE SIDEWALK |
| 7.2.2 | PRECAST CONCRETE TRANSITION CURB (VERTICAL FACE TO SLOPED FACE) | 43.2.0 | BITUMINOUS CONCRETE SIDEWALK |
| 7.3.0S | GRANITE CURB (STRAIGHT) | 43.3.0 | WHEELCHAIR RAMP |
| 7.3.0C | GRANITE CURB (CIRCULAR) | 43.3.1 | WHEELCHAIR RAMP FOR LIMITED RIGHT-OF-WAY AREAS |
| 7.3.1 | 3'-0" GRANITE TRANSITION CURB | 43.4.0 | DRIVEWAY DEVELOPMENT FOR 3'-0" TRANSITION CURB |
| 7.3.2 | 6'-0" GRANITE TRANSITION CURB | 43.4.1 | DRIVEWAY DEVELOPMENT FOR 6'-0" TRANSITION CURB |
| 7.3.3 | GRANITE WHEELCHAIR RAMP TRANSITION CURB | 43.5.0 | CEMENT CONCRETE DRIVEWAYS |
| 7.3.4 | GRANITE 2'-0" RADIUS CORNER | 48.1.0 | DETECTABLE WARNING SYSTEM |
| 7.3.5 | GRANITE INLET STONE (FOR SQUARE CATCH BASIN) | 51.1.0 | TREE PROTECTION DEVICE |
| 7.3.6 | GRANITE INLET STONE (FOR ROUND CATCH BASIN) | 51.1.1 | DRIP LINE TREE PROTECTION DEVICE FOR EXISTING TREES |
| 7.3.7 | GRANITE APRON STONE (FOR SQUARE CATCH BASIN) | 51.2.0 | SHRUB PROTECTION DEVICE |
| 7.3.8 | GRANITE APRON STONE (FOR ROUND CATCH BASIN) | 51.3.0 | TREE WELL |
| 7.4.0 | GRANITE SLOPED FACE CURB | 51.4.0 | TREE WALL |
| 7.4.1 | GRANITE SLOPED FACE TRANSITION CURB | | |

| | | | |
|--------------|--|------------|--|
| 7.4.2 | GRANITE TRANSITION CURB (VERTICAL FACE TO SLOPE FACE) | AB | ADJUST CATCH BASIN TO GRADE |
| 7.5.0 | BITUMINOUS CONCRETE LIP CURB | ABM | ADJUST CATCH BASIN TO MANHOLE |
| 7.5.1A | BITUMINOUS BERM (CONSTRUCTION METHOD A) | AC | ADJUST CURB STOP TO GRADE |
| 7.5.1B | BITUMINOUS BERM (CONSTRUCTION METHOD B) | AD | ADJUST DRAINAGE MANHOLE TO GRADE |
| 7.6.0 | CURB SETTING DETAIL | AE | ADJUST ELECTRIC MANHOLE TO GRADE |
| 8.2.0 | BITUMINOUS CONCRETE DITCH | AFC | ADJUST FRAME AND COVER TO GRADE |
| 8.3.0 | RIP-RAP DITCH | AFG | ADJUST FRAME AND GRATE TO GRADE |
| 8.4.0 | PAVED WATERWAY | AG | ADJUST GAS GATE BOX TO GRADE |
| 9.1.0 | BALED HAY EROSION CHECK | AHH | ADJUST HANDHOLE TO GRADE |
| 9.2.0 | SILT FENCE DETAIL | AS | ADJUST SANITARY SEWER MANHOLE TO GRADE |
| 9.3.0 | BALED HAY DITCH EROSION CHECK AND SILT FENCE COMBINED | AT | ADJUST TELEPHONE MANHOLE TO GRADE |
| 9.4.0 | BALED HAY DITCH AND SWALE EROSION CHECK | AW | ADJUST WATER GATE BOX TO GRADE |
| 9.5.0 | LOG AND HAY CHECK DAM | BCD | BITUMINOUS CONCRETE DRIVEWAY 3" BITUMINOUS CONCRETE TYPE 1-2 8" GRAVEL BORROW SUBBASE COURSE |
| 9.7.0 | DEWATERING BASIN | BPS | BUILD NEW STRUCTURE OVER EXISTING PIPE |
| 9.8.0 | BALED HAY CATCH BASIN INLET PROTECTION | CCB | CLEAN CATCH BASIN |
| 9.9.0 | CONSTRUCTION ACCESS | CCP | CUT AND CAP PIPE WITH RESTRAINT (ALL SIZES) |
| 10.1.0 | WET STONE MASONRY RETAINING WALL | CCF | CLEAN AND FLUSH PIPE |
| 10.2.0 | RUBBLE MASONRY WALL | CG | CLEARING AND GRUBBING |
| 10.3.0 | CONCRETE RETAINING WALL | CMH | CLEAN MANHOLE |
| 10.4.0 | STONE MASONRY STEPS | CP (DEPTH) | COLD PLANE |
| 14.1.0 | CONCRETE HIGHWAY BOUND | CPP | CUT AND PLUG PIPE (ALL TYPES, ALL SIZES) |
| 15.1.0 | POST AND MOUNTINGS FOR RURAL MAILBOX | DB | REMOVE AND DISPOSE BITUMINOUS CURB |
| 15.2.0 (NO.) | POST AND MULTIPLE MOUNTINGS FOR RURAL MAILBOXES | DC | REMOVE AND DISPOSE CONCRETE CURB |
| 18.2.0 | PRECAST TYPE "A" HANDHOLE | DCB | REMOVE AND DISPOSE CATCH BASIN |
| 18.2.2 | HEAVY DUTY TYPE "H" HANDHOLE | DDI | REMOVE AND DISPOSE DROP INLET |
| 18.3.0 | ALUMINUM LIGHTING STANDARDS | DF | REMOVE AND DISPOSE FENCE |
| 20.2.0 | BI-DIRECTIONAL CONTROL DEVICE | DFC | REMOVE AND DISPOSE FRAME AND COVER |
| 24.6.1 | STREET SIGN MOUNTING DETAIL | DFE | REMOVE AND DISPOSE FLARED END SECTION |
| 26.2.0 | POLYETHYLENE DRUM WITH MARKINGS | DFG | REMOVE AND DISPOSE FRAME AND GRATE |
| 26.3.0 | PVC PLASTIC PIPE TYPE III BARRICADE | DFH | REMOVE AND DISPOSE FIRE HYDRANT |
| 31.1.0 | CHAIN LINK FENCE 3'-0" TO 4'-0" | DFP | REMOVE AND DISPOSE FLEXIBLE PAVEMENT |
| 31.2.0 | CHAIN LINK FENCE 5'-0" TO 6'-0" | DG | REMOVE AND DISPOSE GUARDRAIL |
| 31.2.1 | CHAIN LINK FENCE 5'-0" TO 6'-0" INTERMEDIATE POST | DH | REMOVE AND DISPOSE HEADWALL |
| 31.3.0 | WOVEN WIRE RIGHT-OF-WAY FENCE (STEEL POST) | DHB | REMOVE AND DISPOSE HIGHWAY BOUND |
| 34.1.0 | TYPICAL GUARDRAIL INSTALLATION | DHH | REMOVE AND DISPOSE HANDHOLE |
| 34.2.0 | STEEL BEAM GUARDRAIL | DL | REMOVE AND DISPOSE LIGHT AND FOUNDATION |
| 34.2.1 | STEEL BEAM GUARDRAIL DETAILS | DMB | REMOVE AND DISPOSE MEDIAN BARRIER |
| 34.2.2 | STEEL BEAM GUARDRAIL DOUBLE FACED ASSEMBLY | DMH | REMOVE AND DISPOSE MANHOLE |
| 34.2.3 | STEEL BEAM GUARDRAIL FIXTURES | DMM | REMOVE AND DISPOSE MEDIAN MARKER |
| 34.2.5 | STEEL BEAM GUARDRAIL REFLECTORIZED TRIANGULAR DELINEATOR | DOW | REMOVE AND DISPOSE OBSERVATION WELL |
| 34.3.1 | GUARDRAIL END SECTION | DP | REMOVE AND DISPOSE PIPE |
| 34.3.2 | TERMINAL END SECTION (SINGLE FACE) | DPB | REMOVE AND DISPOSE PAVEMENT AND RIGID BASE |
| 34.3.3 | ANCHORAGE DETAILS APPROACH END SECTION | DRB | REMOVE AND DISPOSE RIGID BASE |
| 34.3.4 | ANCHORAGE DETAILS TRAILING END SECTION | DS | REMOVE AND DISPOSE SIGN |
| 34.4.0 | STEEL BACKED TIMBER GUARDRAIL | DSS | REMOVE AND DISPOSE TRAFFIC SIGNAL SYSTEM |
| 34.4.1 | STEEL BACKED TIMBER GUARDRAIL TERMINAL SECTION-TYPE 1 | DSW | REMOVE AND DISPOSE SIDEWALK |
| 40.1.0 | DOUBLE-FACED PRECAST MEDIAN BARRIER | DTD | REMOVE AND DISPOSE TELEPHONE DUCT BANKS |
| 40.2.0 | SINGLE-FACED PRECAST MEDIAN BARRIER | DUP | REMOVE AND DISPOSE UTILITY POLE |
| 40.2.1 | SINGLE-FACED PRECAST MEDIAN BARRIER | DWW | REMOVE AND DISPOSE PAVED WATERWAY |
| 40.3.0 | PRECAST MEDIAN BARRIER TRANSITION UNIT | FF | FILTER FABRIC RIPRAP FLARED END UNDERLAYMENT |
| 40.5.0 | PRECAST MEDIAN BARRIER FOR TEMPORARY TRAFFIC CONTROL | GET | FLARED GUARDRAIL END TREATMENT |
| 43.1.0 | CEMENT CONCRETE SIDEWALK | IA | IMPACT ATTENUATOR |
| 43.2.0 | BITUMINOUS CONCRETE SIDEWALK | IDL | IMPERVIOUS DITCH LINER |
| 43.3.0 | WHEELCHAIR RAMP | LOD | LIMIT OF DISTURBANCE |
| 43.3.1 | WHEELCHAIR RAMP FOR LIMITED RIGHT-OF-WAY AREAS | LOR | LIMIT OF REGRADING |
| 43.4.0 | DRIVEWAY DEVELOPMENT FOR 3'-0" TRANSITION CURB | LS | 4" LOAM AND SEED |
| 43.4.1 | DRIVEWAY DEVELOPMENT FOR 6'-0" TRANSITION CURB | | |
| 43.5.0 | CEMENT CONCRETE DRIVEWAYS | | |
| 48.1.0 | DETECTABLE WARNING SYSTEM | | |
| 51.1.0 | TREE PROTECTION DEVICE | | |
| 51.1.1 | DRIP LINE TREE PROTECTION DEVICE FOR EXISTING TREES | | |
| 51.2.0 | SHRUB PROTECTION DEVICE | | |
| 51.3.0 | TREE WELL | | |
| 51.4.0 | TREE WALL | | |

| | | | |
|------------|--|--------|---|
| AB | ADJUST CATCH BASIN TO GRADE | NFH | NEW FIRE HYDRANT WITH GATE VALVE |
| ABM | ADJUST CATCH BASIN TO MANHOLE | NIC | NOT IN THIS CONSTRUCTION CONTRACT |
| AC | ADJUST CURB STOP TO GRADE | NWB | FURNISH AND INSTALL NEW WATER GATE VALVE BOX |
| AD | ADJUST DRAINAGE MANHOLE TO GRADE | NWVB | FURNISH AND INSTALL NEW WATER GATE VALVE AND BOX |
| AE | ADJUST ELECTRIC MANHOLE TO GRADE | NWCB | FURNISH AND INSTALL NEW WATER CURB STOP BOX |
| AFC | ADJUST FRAME AND COVER TO GRADE | NWSB | FURNISH AND INSTALL NEW WATER CURB STOP AND BOX |
| AFG | ADJUST FRAME AND GRATE TO GRADE | PCD | PERMANENT CHECK DAM |
| AG | ADJUST GAS GATE BOX TO GRADE | PS | 4" PLANTABLE SOIL AND SEED |
| AHH | ADJUST HANDHOLE TO GRADE | RCB | RECONSTRUCT TYPE "D" CATCH BASIN, TO CATCH BASIN WITH GUTTER INLET |
| AS | ADJUST SANITARY SEWER MANHOLE TO GRADE | RCM | R.I.D.O.T. COMMUNICATIONS MANHOLE |
| AT | ADJUST TELEPHONE MANHOLE TO GRADE | RHH | REMOVE, HANDLE, HAUL, TRIM, RESET CURB EDGING, STRAIGHT, CIRCULAR (ALL TYPES) |
| AW | ADJUST WATER GATE BOX TO GRADE | RLP | RELOCATE LAMP POST |
| BCD | BITUMINOUS CONCRETE DRIVEWAY 3" BITUMINOUS CONCRETE TYPE 1-2 8" GRAVEL BORROW SUBBASE COURSE | RMB | RELOCATE MAILBOX (BY OTHERS) |
| BPS | BUILD NEW STRUCTURE OVER EXISTING PIPE | RPM | REMOVE PAVEMENT MARKINGS |
| CCB | CLEAN CATCH BASIN | RRP | RIP-RAP PAD (SEE DETAIL) |
| CCP | CUT AND CAP PIPE WITH RESTRAINT (ALL SIZES) | RRS | REMOVE AND RELOCATE SIGN |
| CCF | CLEAN AND FLUSH PIPE | RUP | RELOCATE UTILITY POLE (BY OTHERS) |
| CG | CLEARING AND GRUBBING | SB | STONE BAFFLE |
| CMH | CLEAN MANHOLE | SBAE | STEEL BEAM BRIDGE CONNECTION APPROACH END (W/O NESTED RAIL) |
| CP (DEPTH) | COLD PLANE | SBTB | STEEL BEAM BRIDGE CONNECTION TRAILING END (W/NESTED RAIL) |
| CPP | CUT AND PLUG PIPE (ALL TYPES, ALL SIZES) | SD- | STRUCTURAL DISPOSITION - SEE CS PAGES OF SPECIFICATION |
| DB | REMOVE AND DISPOSE BITUMINOUS CURB | SF | REMOVE AND STOCKPILE FENCE |
| DC | REMOVE AND DISPOSE CONCRETE CURB | SGA | SPECIAL GRADED AGGREGATE |
| DCB | REMOVE AND DISPOSE CATCH BASIN | SGC | REMOVE AND STOCKPILE GRANITE CURB |
| DDI | REMOVE AND DISPOSE DROP INLET | SGR | REMOVE AND STOCKPILE GUARDRAIL |
| DF | REMOVE AND DISPOSE FENCE | SH | REMOVE AND STOCKPILE HYDRANT |
| DFC | REMOVE AND DISPOSE FRAME AND COVER | SS | REMOVE AND STOCKPILE SIGN |
| DFE | REMOVE AND DISPOSE FLARED END SECTION | STS | REMOVE AND STOCKPILE TRAFFIC SIGNAL SYSTEM |
| DFG | REMOVE AND DISPOSE FRAME AND GRATE | TB | CONCRETE THRUST BLOCK |
| DFH | REMOVE AND DISPOSE FIRE HYDRANT | TEP | TIE EXISTING PIPE INTO NEW STRUCTURE |
| DFP | REMOVE AND DISPOSE FLEXIBLE PAVEMENT | TNP | TIE NEW PIPE INTO EXISTING STRUCTURE |
| DG | REMOVE AND DISPOSE GUARDRAIL | TBT | THREE BEAM TRANSITION |
| DH | REMOVE AND DISPOSE HEADWALL | TBBC | THREE BEAM BRIDGE CONNECTION |
| DHB | REMOVE AND DISPOSE HIGHWAY BOUND | TT | TREE TRIMMING |
| DHH | REMOVE AND DISPOSE HANDHOLE | WCM | 4" WOOD CHIP MULCH |
| DL | REMOVE AND DISPOSE LIGHT AND FOUNDATION | 4DY | 4" EPOXY RESIN PAVEMENT MARKINGS - DOUBLE YELLOW |
| DMB | REMOVE AND DISPOSE MEDIAN BARRIER | 6W | 6" EPOXY RESIN PAVEMENT MARKINGS - WHITE |
| DMH | REMOVE AND DISPOSE MANHOLE | 12W | 12" EPOXY RESIN PAVEMENT MARKINGS - WHITE |
| DMM | REMOVE AND DISPOSE MEDIAN MARKER | 6WT | 6" PREFORMED PATTERNED MARKING (HIGH PERFORMANCE TAPE) |
| DOW | REMOVE AND DISPOSE OBSERVATION WELL | 4Y | 4" EPOXY RESIN PAVEMENT MARKINGS - YELLOW |
| DP | REMOVE AND DISPOSE PIPE | 6Y | 6" EPOXY RESIN PAVEMENT MARKINGS - YELLOW |
| DPB | REMOVE AND DISPOSE PAVEMENT AND RIGID BASE | P.G.L. | PROFILE GRADE LINE |
| DRB | REMOVE AND DISPOSE RIGID BASE | | |
| DS | REMOVE AND DISPOSE SIGN | | |
| DSS | REMOVE AND DISPOSE TRAFFIC SIGNAL SYSTEM | | |
| DSW | REMOVE AND DISPOSE SIDEWALK | | |
| DTD | REMOVE AND DISPOSE TELEPHONE DUCT BANKS | | |
| DUP | REMOVE AND DISPOSE UTILITY POLE | | |
| DWW | REMOVE AND DISPOSE PAVED WATERWAY | | |
| FF | FILTER FABRIC RIPRAP FLARED END UNDERLAYMENT | | |
| GET | FLARED GUARDRAIL END TREATMENT | | |
| IA | IMPACT ATTENUATOR | | |
| IDL | IMPERVIOUS DITCH LINER | | |
| LOD | LIMIT OF DISTURBANCE | | |
| LOR | LIMIT OF REGRADING | | |
| LS | 4" LOAM AND SEED | | |

| | |
|------------|--|
| AB | ADJUST CATCH BASIN TO GRADE |
| ABM | ADJUST CATCH BASIN TO MANHOLE |
| AC | ADJUST CURB STOP TO GRADE |
| AD | ADJUST DRAINAGE MANHOLE TO GRADE |
| AE | ADJUST ELECTRIC MANHOLE TO GRADE |
| AFC | ADJUST FRAME AND COVER TO GRADE |
| AFG | ADJUST FRAME AND GRATE TO GRADE |
| AG | ADJUST GAS GATE BOX TO GRADE |
| AHH | ADJUST HANDHOLE TO GRADE |
| AS | ADJUST SANITARY SEWER MANHOLE TO GRADE |
| AT | ADJUST TELEPHONE MANHOLE TO GRADE |
| AW | ADJUST WATER GATE BOX TO GRADE |
| BCD | BITUMINOUS CONCRETE DRIVEWAY 3" BITUMINOUS CONCRETE TYPE 1-2 8" GRAVEL BORROW SUBBASE COURSE |
| BPS | BUILD NEW STRUCTURE OVER EXISTING PIPE |
| CCB | CLEAN CATCH BASIN |
| CCP | CUT AND CAP PIPE WITH RESTRAINT (ALL SIZES) |
| CCF | CLEAN AND FLUSH PIPE |
| CG | CLEARING AND GRUBBING |
| CMH | CLEAN MANHOLE |
| CP (DEPTH) | COLD PLANE |
| CPP | CUT AND PLUG PIPE (ALL TYPES, ALL SIZES) |
| DB | REMOVE AND DISPOSE BITUMINOUS CURB |
| DC | REMOVE AND DISPOSE CONCRETE CURB |
| DCB | REMOVE AND DISPOSE CATCH BASIN |
| DDI | REMOVE AND DISPOSE DROP INLET |
| DF | REMOVE AND DISPOSE FENCE |
| DFC | REMOVE AND DISPOSE FRAME AND COVER |
| DFE | REMOVE AND DISPOSE FLARED END SECTION |
| DFG | REMOVE AND DISPOSE FRAME AND GRATE |
| DFH | REMOVE AND DISPOSE FIRE HYDRANT |
| DFP | REMOVE AND DISPOSE FLEXIBLE PAVEMENT |
| DG | REMOVE AND DISPOSE GUARDRAIL |
| DH | REMOVE AND DISPOSE HEADWALL |
| DHB | REMOVE AND DISPOSE HIGHWAY BOUND |
| DHH | REMOVE AND DISPOSE HANDHOLE |
| DL | REMOVE AND DISPOSE LIGHT |

| FED. ROAD DIV. NO. | STATE | FEDERAL AID PROJECT NO. | FISCAL YEAR | SHEET NO. | TOTAL SHEETS |
|--------------------|-------|-------------------------|-------------|-----------|--------------|
| 1 | R.I. | | | 7 | 26 |

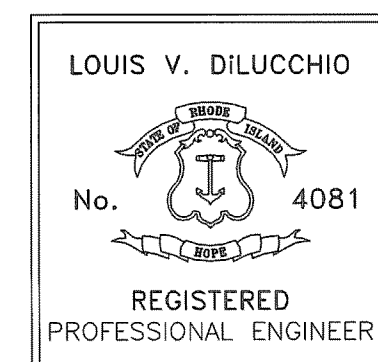


R.I. CONTRACT NO.
F.A. PROJECT NO.
LIMIT OF WORK STA. 101+17±
SUNSET AVENUE

MATCH TO PLAN 2

DEPARTMENT OF ENVIRONMENTAL MANAGEMENT
OFFICE OF WATER RESOURCES
FRESHWATER WETLANDS PROGRAM
REVIEWED SITE PLAN APPLICATION NO.: 11-0124
DATED JUN 25 2011
SEE LETTER OF SAME DATE

Charles A. Hester



Gordon R. Archibald, Inc.
Civil and Environmental Engineers
Pawtucket, RI

| REVISIONS | | |
|-----------|------|----|
| NO. | DATE | BY |
| | | |
| | | |
| | | |
| | | |
| | | |
| | | |
| | | |
| | | |
| | | |
| | | |

RHODE ISLAND
DEPARTMENT OF TRANSPORTATION
1R IMPROVEMENTS TO
CENTRAL AVE./SUNSET AVE.
JOHNSTON & PROVIDENCE, RHODE ISLAND
GENERAL PLAN - 1
STA. 100+00 TO STA. 106+00
CHECKED BY _____ DATE _____ SCALE 1" = 20'
R.I.D.E.M. APPLICATION SHEET NO. 7 OF 21

F:\FILES\CAD\1069\017D2_HIGHWAY_PLANS\017D2_V1_007_GENERAL001.dwg, WETLAND, 06/25/11 8:51:15 AM, USER: RBP, PLOT: 06/25/11 11:02:12 AM

