

FED. ROAD DIV. NO.	STATE	FEDERAL AID PROJECT NO.	FISCAL YEAR	SHEET NO.	TOTAL SHEETS
	R.I.			1	18

# INDEX

SHEET NO.	DESCRIPTION
1	COVER SHEET
2	STANDARD LEGEND
3 & 4	STANDARD NOTES 1 & 2
5	JOB SPECIFIC SYMBOLS, LEGEND AND NOTES
6	TYPICAL SECTION
7-18	GENERAL PLANS 1 - 12

# STATE OF RHODE ISLAND DEPARTMENT OF TRANSPORTATION

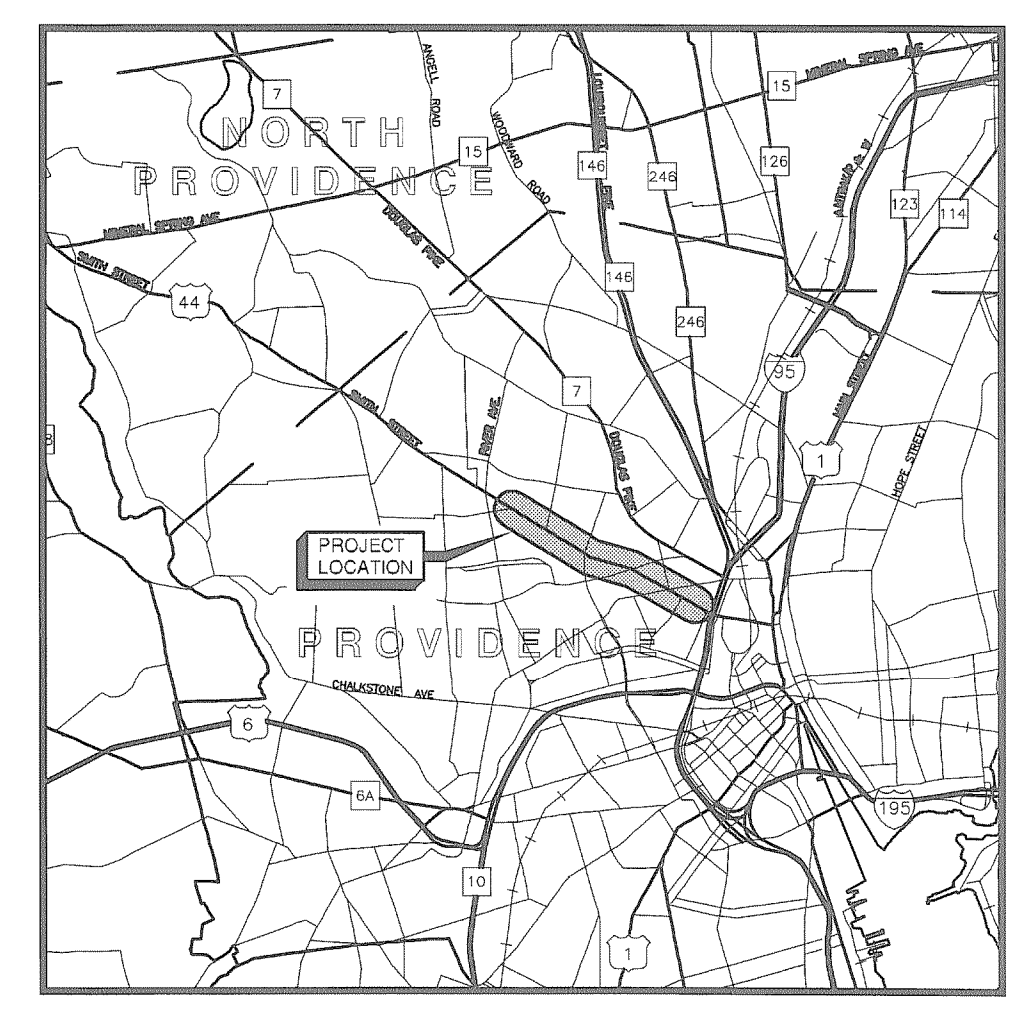
## PLAN OF PROPOSED STATE HIGHWAY 1R IMPROVEMENTS TO SMITH STREET LYNDHURST AVENUE TO ROUTE I-95

CITY OF PROVIDENCE  
COUNTY OF PROVIDENCE

R.I. CONTRACT NO. 2006-EH-010 F.A. PROJECT NOS.

PAVEMENT STRUCTURE

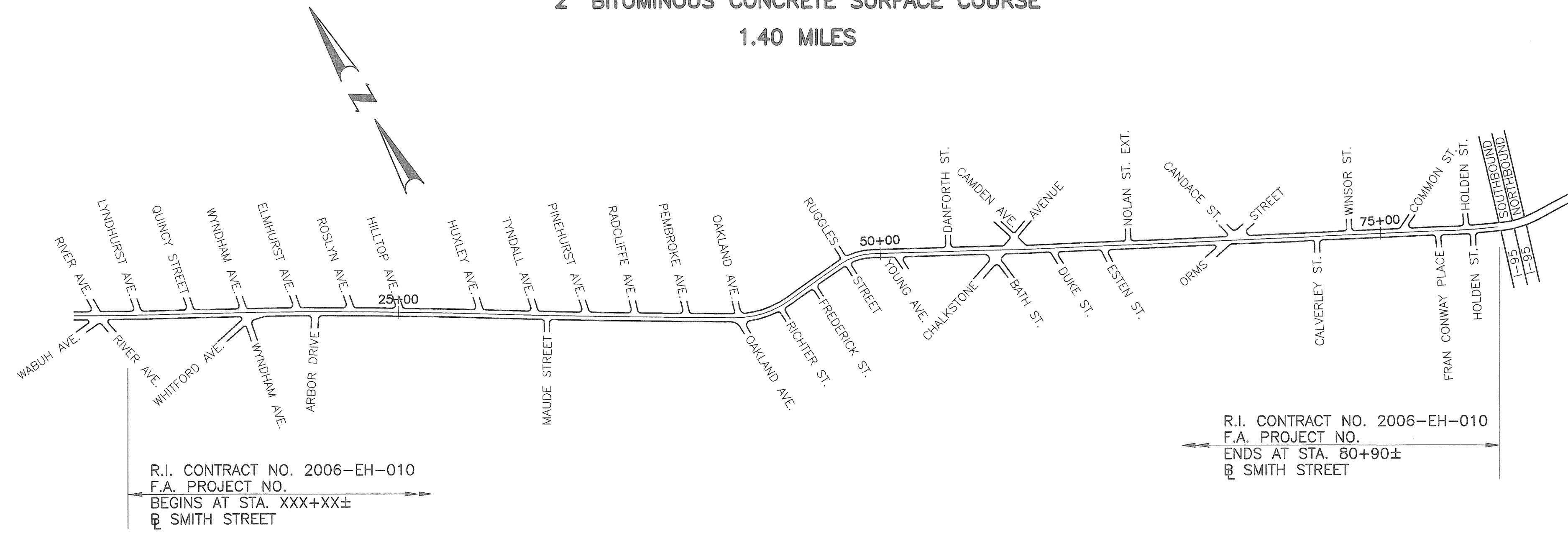
2" BITUMINOUS CONCRETE SURFACE COURSE  
1.40 MILES



LOCATION PLAN  
SCALE 1" = 1 MILES

R.I. STANDARD SPECIFICATIONS AND STANDARD DETAILS

SPECIFICATIONS TO GOVERN THIS PROJECT ARE THE R.I. STANDARD SPECIFICATIONS FOR ROAD AND BRIDGE CONSTRUCTION, 2004 EDITION. FEDERAL SPECIAL PROVISIONS INCLUDED IN THE CONTRACT DOCUMENTS STANDARD DETAILS FOR THIS PROJECT ARE R.I. STANDARD DETAILS, 1998 EDITION, WITH ALL REVISIONS.



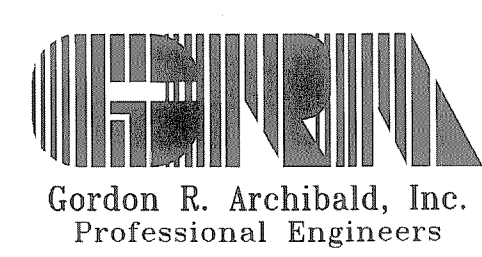
DEPARTMENT OF ENVIRONMENTAL MANAGEMENT  
OFFICE OF WATER RESOURCES  
FRESHWATER WETLANDS PROGRAM  
REVIEWED SITE PLAN APPLICATION NO. 11-0126  
DATED JUL 26 2011  
SEE LETTER OF SAME DATE.

*Charles A. Habert*  
**WETLAND SUBMISSION**  
JUNE, 2011

LOUIS V. DILUCCHIO  
No. 4081  
REGISTERED PROFESSIONAL ENGINEER

LAYOUT  
SCALE 1"=400'±  
SCALES OF DRAWINGS  
Plans 1 inch = 20 feet

BASE OF LEVELS  
M.S.L.



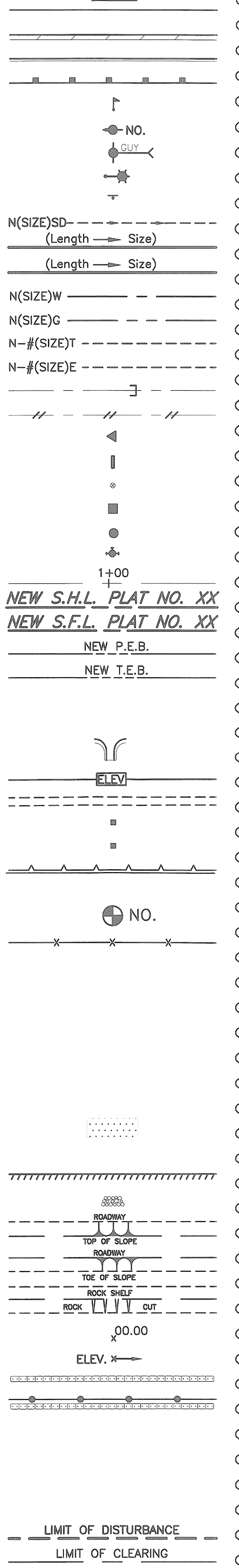
Contract Number 2006-EH-010  
Number of Sheet 1  
Total Sheets 18

R.I. DEPARTMENT OF TRANSPORTATION	
APPROVED	DATE
DEPUTY CHIEF ENGINEER	DATE
APPROVED	DATE
CHIEF ENGINEER	DATE
APPROVED	DATE
DIRECTOR	DATE
DEPARTMENT OF TRANSPORTATION FEDERAL HIGHWAY ADMINISTRATION	
APPROVED	DATE
DIVISION ADMINISTRATOR	DATE

EXISTING

NEW

- EDGE OF PAVEMENT
- BERM
- CURB
- GUARDRAIL
- MAILBOX
- UTILITY POLE
- POLE GUY
- LUMINARE
- SIGN
- SUBDRAIN
- STORMDRAIN
- SANITARY SEWER
- WATER MAIN
- GAS MAIN
- TELEPHONE DUCT
- ELECTRIC DUCT
- PLUG AND CAP PIPE
- ABANDONED UTILITY
- FLARED END SECTION
- HEADWALL
- WATER OR GAS GATE
- CATCH BASIN
- MANHOLE
- HYDRANT
- BASILINE OR CENTERLINE
- STATE HIGHWAY LINE
- STATE FREEWAY LINE
- PERMANENT EASEMENT LINE
- TEMPORARY EASEMENT LINE
- PROPERTY LINE
- CITY OR TOWN LINE
- PAVED WATERWAY
- CONTOUR LINE
- OPEN DITCH
- R.I. HIGHWAY BOUND
- STONE BOUND
- RETAINING WALL
- FIELD STONE WALL
- BORINGS
- FENCE
- WOOD OR BRUSH LINE
- TREES
- RIVER OR STREAM
- WETLAND AREA
- BUILDING
- FOUNDATION
- BUILDING TO BE REMOVED
- RAILROAD TRACKS
- CUT AND MATCH
- RIP-RAP
- CUT SLOPE
- FILL SLOPE
- ROCK CUT
- SPOT GRADE
- AREA GRADED TO DRAIN
- BALED HAY RI STD 9.1.0
- BALED HAY & SILT FENCE RI STD. 9.3.0
- EDGE OF WETLAND
- WETLAND PERIMETER
- AREA SUBJECT TO STORM FLOW
- 100-YEAR FLOOD PLAIN
- LIMIT OF DISTURBANCE
- LIMIT OF CLEARING



1.1.0	UNDERDRAIN	7.4.2	GRANITE TRANSITION CURB (VERTICAL FACE TO SLOPE FACE)
1.3.0	CONCRETE CONNECTING COLLAR	7.5.0	BITUMINOUS CONCRETE LIP CURB
2.1.0	CONCRETE HEADWALLS FOR PIPE CULVERTS	7.5.1A	BITUMINOUS BERM (CONSTRUCTION METHOD A)
2.2.0	STANDARD HEADWALLS FOR MULTIPLE 3'-6" TO 7'-0" PIPE CULVERTS	7.5.1B	BITUMINOUS BERM (CONSTRUCTION METHOD B)
2.3.0 (DIA.)	PRECAST CONCRETE FLARED END SECTION	7.6.0	CURB SETTING DETAIL
3.2.0	BRICK/SOLID BLOCK 4'-0" ROUND MANHOLE	8.2.0	BITUMINOUS CONCRETE DITCH
3.2.1 (DIA.)	BRICK/SOLID BLOCK 5'-0" OR 6'-0" ROUND MANHOLE	8.3.0	RIP-RAP DITCH
3.3.0	BRICK/SOLID BLOCK TYPE "D" SQUARE CATCH BASIN	8.4.0	PAVED WATERWAY
3.3.2	BRICK/SOLID BLOCK TYPE "F" SQUARE CATCH BASIN	9.1.0	BALED HAY EROSION CHECK
3.3.3	SOLID BLOCK FLUSH SQUARE CATCH BASIN	9.2.0	SILT FENCE DETAIL
3.4.0	BRICK/SOLID BLOCK TYPE "D" ROUND CATCH BASIN	9.3.0	BALED HAY DITCH EROSION CHECK AND SILT FENCE COMBINED
3.4.1	BRICK/SOLID BLOCK ROUND CATCH BASIN WITH GUTTER INLET	9.4.0	BALED HAY DITCH AND SWALE EROSION CHECK
3.4.2	BRICK/SOLID BLOCK TYPE "F" ROUND CATCH BASIN	9.5.0	LOG AND HAY CHECK DAM
3.4.3	BRICK/SOLID BLOCK TYPE "R" CATCH BASIN	9.7.0	DEWATERING BASIN
3.4.4	SOLID BLOCK FLUSH ROUND CATCH BASIN	9.8.0	BALED HAY CATCH BASIN INLET PROTECTION
3.4.5 (DIA.)	BRICK/SOLID BLOCK 5'-0" OR 6'-0" ROUND CATCH BASIN	9.9.0	CONSTRUCTION ACCESS
3.5.0	SOLID BLOCK SHALLOW TYPE "F" SQUARE CATCH BASIN	10.1.0	WET STONE MASONRY RETAINING WALL
3.5.1 (SIZE)	SOLID BLOCK SHALLOW 5'-0" OR 6'-0" SQUARE CATCH BASIN	10.2.0	RUBBLE MASONRY WALL
3.6.0	BRICK/SOLID BLOCK DROP INLET	10.3.0	CONCRETE RETAINING WALL
3.7.0 (DIA.)	BRICK/SOLID BLOCK ROUND MANHOLE OR CATCH BASIN GREATER THAN 12'-0"	10.4.0	STONE MASONRY STEPS
4.2.0	PRECAST 4'-0" ROUND MANHOLE	14.1.0	CONCRETE HIGHWAY BOUND
4.2.1	PRECAST 5'-0" ROUND MANHOLE	15.1.0	POST AND MOUNTINGS FOR RURAL MAILBOX
4.2.2	PRECAST 6'-0" ROUND MANHOLE	15.2.0 (NO.)	POST AND MULTIPLE MOUNTINGS FOR RURAL MAILBOXES
4.3.0 (SIZE)	PRECAST 4'-0" OR 6'-0" SQUARE MANHOLE OR CATCH BASIN	18.2.0	PRECAST TYPE "A" HANDHOLE
4.4.0 (DIA.)	PRECAST 4'-0", 5'-0", OR 6'-0" ROUND CATCH BASIN	18.2.2	HEAVY DUTY TYPE "H" HANDHOLE
4.5.0	PRECAST CONCRETE DROP INLET	18.3.0	ALUMINUM LIGHTING STANDARDS
4.5.1	PRECAST CONCRETE DROP INLET LATERAL OUTLET	20.2.0	BI-DIRECTIONAL CONTROL DEVICE
4.5.2	PRECAST CONCRETE DROP INLET LONGITUDINAL OUTLET	24.6.1	STREET SIGN MOUNTING DETAIL
5.3.0	CATCH BASIN AND MANHOLE STEP	26.2.0	POLYETHYLENE DRUM WITH MARKINGS
5.4.0	CONCRETE COLLARS	26.3.0	PVC PLASTIC PIPE TYPE III BARRICADE
6.1.0	LIGHT-DUTY SQUARE FRAME AND ROUND COVER	31.1.0	CHAIN LINK FENCE 3'-0" TO 4'-0"
6.1.1	HEAVY DUTY SQUARE FRAME AND ROUND COVER	31.2.0	CHAIN LINK FENCE 5'-0" TO 6'-0"
6.2.0	LIGHT-DUTY ROUND FRAME AND COVER	31.2.1	CHAIN LINK FENCE 5'-0" TO 6'-0" INTERMEDIATE POST
6.2.1	HEAVY-DUTY ROUND FRAME AND COVER	31.3.0	WOVEN WIRE RIGHT-OF-WAY FENCE (STEEL POST)
6.3.0	SQUARE FRAME AND GRATE	34.1.0	TYPICAL GUARDRAIL INSTALLATION
6.3.1	SQUARE FRAME AND GRATE	34.2.0	STEEL BEAM GUARDRAIL
6.3.2	SQUARE FRAME AND GRATE (BICYCLE SAFE)	34.2.1	STEEL BEAM GUARDRAIL DETAILS
6.3.3	HIGH CAPACITY FRAME AND GRATE	34.2.2	STEEL BEAM GUARDRAIL DOUBLE FACED ASSEMBLY
6.3.4	HIGH CAPACITY FRAME AND GRATE (BICYCLE SAFE)	34.2.3	STEEL BEAM GUARDRAIL FIXTURES
6.4.0	ROUND FRAME AND GRATE	34.2.5	STEEL BEAM GUARDRAIL REFLECTORIZED TRIANGULAR DELINEATOR
7.1.0S	PRECAST CONCRETE CURB (STRAIGHT)	34.3.1	GUARDRAIL END SECTION
7.1.0C	PRECAST CONCRETE CURB (CIRCULAR)	34.3.2	TERMINAL END SECTION (SINGLE FACE)
7.1.1	3'-0" PRECAST CONCRETE TRANSITION CURB	34.3.3	ANCHORAGE DETAILS APPROACH END SECTION
7.1.2	6'-0" PRECAST CONCRETE TRANSITION CURB	34.3.4	ANCHORAGE DETAILS TRAILING END SECTION
7.1.4	PRECAST 2'-0" RADIUS CORNER	34.4.0	STEEL BACKED TIMBER GUARDRAIL
7.1.5	PRECAST CONCRETE INLET STONE (FOR SQUARE CATCH BASIN)	34.4.1	STEEL BACKED TIMBER GUARDRAIL TERMINAL SECTION-TYPE 1
7.1.6	PRECAST CONCRETE INLET STONE (FOR ROUND CATCH BASIN)	40.1.0	DOUBLE-FACED PRECAST MEDIAN BARRIER
7.1.7	PRECAST CONCRETE APRON STONE (FOR SQUARE CATCH BASIN)	40.2.0	SINGLE-FACED PRECAST MEDIAN BARRIER
7.1.8	PRECAST CONCRETE APRON STONE (FOR ROUND CATCH BASIN)	40.2.1	SINGLE-FACED PRECAST MEDIAN BARRIER
7.2.0S	PRECAST CONCRETE SLOPED FACE CURB (STRAIGHT)	40.3.0	PRECAST MEDIAN BARRIER TRANSITION UNIT
7.2.0C	PRECAST CONCRETE SLOPED FACE CURB (CIRCULAR)	40.5.0	PRECAST MEDIAN BARRIER FOR TEMPORARY TRAFFIC CONTROL
7.2.1	PRECAST CONCRETE SLOPED FACE TRANSITION CURB	43.1.0	CEMENT CONCRETE SIDEWALK
7.2.2	PRECAST CONCRETE TRANSITION CURB (VERTICAL FACE TO SLOPED FACE)	43.2.0	BITUMINOUS CONCRETE SIDEWALK
7.3.0S	GRANITE CURB (STRAIGHT)	43.3.0	WHEELCHAIR RAMP
7.3.0C	GRANITE CURB (CIRCULAR)	43.3.1	WHEELCHAIR RAMP FOR LIMITED RIGHT-OF-WAY AREAS
7.3.1	3'-0" GRANITE TRANSITION CURB	43.4.0	DRIVEWAY DEVELOPMENT FOR 3'-0" TRANSITION CURB
7.3.2	6'-0" GRANITE TRANSITION CURB	43.4.1	DRIVEWAY DEVELOPMENT FOR 6'-0" TRANSITION CURB
7.3.3	GRANITE WHEELCHAIR RAMP TRANSITION CURB	43.5.0	CEMENT CONCRETE DRIVEWAYS
7.3.4	GRANITE 2'-0" RADIUS CORNER	48.1.0	DETECTABLE WARNING SYSTEM
7.3.5	GRANITE INLET STONE (FOR SQUARE CATCH BASIN)	51.1.0	TREE PROTECTION DEVICE
7.3.6	GRANITE INLET STONE (FOR ROUND CATCH BASIN)	51.1.1	DRIP LINE TREE PROTECTION DEVICE FOR EXISTING TREES
7.3.7	GRANITE APRON STONE (FOR SQUARE CATCH BASIN)	51.2.0	SHRUB PROTECTION DEVICE
7.3.8	GRANITE APRON STONE (FOR ROUND CATCH BASIN)	51.3.0	TREE WELL
7.4.0	GRANITE SLOPED FACE CURB	51.4.0	TREE WALL
7.4.1	GRANITE SLOPED FACE TRANSITION CURB		

7.4.2	GRANITE TRANSITION CURB (VERTICAL FACE TO SLOPE FACE)	AB	ADJUST CATCH BASIN TO GRADE
7.5.0	BITUMINOUS CONCRETE LIP CURB	ABM	ADJUST CATCH BASIN TO MANHOLE
7.5.1A	BITUMINOUS BERM (CONSTRUCTION METHOD A)	AC	ADJUST CURB STOP TO GRADE
7.5.1B	BITUMINOUS BERM (CONSTRUCTION METHOD B)	AD	ADJUST DRAINAGE MANHOLE TO GRADE
7.6.0	CURB SETTING DETAIL	AE	ADJUST ELECTRIC MANHOLE TO GRADE
8.2.0	BITUMINOUS CONCRETE DITCH	AFC	ADJUST FRAME AND COVER TO GRADE
8.3.0	RIP-RAP DITCH	AFG	ADJUST FRAME AND GRATE TO GRADE
8.4.0	PAVED WATERWAY	AG	ADJUST GAS GATE BOX TO GRADE
9.1.0	BALED HAY EROSION CHECK	AHH	ADJUST HANDHOLE TO GRADE
9.2.0	SILT FENCE DETAIL	AS	ADJUST SANITARY SEWER MANHOLE TO GRADE
9.3.0	BALED HAY DITCH EROSION CHECK AND SILT FENCE COMBINED	AT	ADJUST TELEPHONE MANHOLE TO GRADE
9.4.0	BALED HAY DITCH AND SWALE EROSION CHECK	AW	ADJUST WATER GATE BOX TO GRADE
9.5.0	LOG AND HAY CHECK DAM	BCD	BITUMINOUS CONCRETE DRIVEWAY 3" BITUMINOUS CONCRETE TYPE I-2 8" GRAVEL BORROW SUBBASE COURSE
9.7.0	DEWATERING BASIN	BPS	BUILD NEW STRUCTURE OVER EXISTING PIPE
9.8.0	BALED HAY CATCH BASIN INLET PROTECTION	CCB	CLEAN CATCH BASIN
9.9.0	CONSTRUCTION ACCESS	CCP	CUT AND CAP PIPE WITH RESTRAINT (ALL SIZES)
10.1.0	WET STONE MASONRY RETAINING WALL	CCF	CLEAN AND FLUSH PIPE
10.2.0	RUBBLE MASONRY WALL	CG	CLEARING AND GRUBBING
10.3.0	CONCRETE RETAINING WALL	CMH	CLEAN MANHOLE
10.4.0	STONE MASONRY STEPS	CP (DEPTH)	COLD PLANE
14.1.0	CONCRETE HIGHWAY BOUND	CPP	CUT AND PLUG PIPE (ALL TYPES, ALL SIZES)
15.1.0	POST AND MOUNTINGS FOR RURAL MAILBOX	DB	REMOVE AND DISPOSE BITUMINOUS CURB
15.2.0 (NO.)	POST AND MULTIPLE MOUNTINGS FOR RURAL MAILBOXES	DC	REMOVE AND DISPOSE CONCRETE CURB
18.2.0	PRECAST TYPE "A" HANDHOLE	DCB	REMOVE AND DISPOSE CATCH BASIN
18.2.2	HEAVY DUTY TYPE "H" HANDHOLE	DDI	REMOVE AND DISPOSE DROP INLET
18.3.0	ALUMINUM LIGHTING STANDARDS	DF	REMOVE AND DISPOSE FENCE
20.2.0	BI-DIRECTIONAL CONTROL DEVICE	DFC	REMOVE AND DISPOSE FRAME AND COVER
24.6.1	STREET SIGN MOUNTING DETAIL	DFE	REMOVE AND DISPOSE FLARED END SECTION
26.2.0	POLYETHYLENE DRUM WITH MARKINGS	DFG	REMOVE AND DISPOSE FRAME AND GRATE
26.3.0	PVC PLASTIC PIPE TYPE III BARRICADE	DFH	REMOVE AND DISPOSE FIRE HYDRANT
31.1.0	CHAIN LINK FENCE 3'-0" TO 4'-0"	DFP	REMOVE AND DISPOSE FLEXIBLE PAVEMENT
31.2.0	CHAIN LINK FENCE 5'-0" TO 6'-0"	DG	REMOVE AND DISPOSE GUARDRAIL
31.2.1	CHAIN LINK FENCE 5'-0" TO 6'-0" INTERMEDIATE POST	DH	REMOVE AND DISPOSE HEADWALL
31.3.0	WOVEN WIRE RIGHT-OF-WAY FENCE (STEEL POST)	DHB	REMOVE AND DISPOSE HIGHWAY BOUND
34.1.0	TYPICAL GUARDRAIL INSTALLATION	DHH	REMOVE AND DISPOSE HANDHOLE
34.2.0	STEEL BEAM GUARDRAIL	DL	REMOVE AND DISPOSE LIGHT AND FOUNDATION
34.2.1	STEEL BEAM GUARDRAIL DETAILS	DMB	REMOVE AND DISPOSE MEDIAN BARRIER
34.2.2	STEEL BEAM GUARDRAIL DOUBLE FACED ASSEMBLY	DMH	REMOVE AND DISPOSE MANHOLE
34.2.3	STEEL BEAM GUARDRAIL FIXTURES	DMM	REMOVE AND DISPOSE MEDIAN MARKER
34.2.5	STEEL BEAM GUARDRAIL REFLECTORIZED TRIANGULAR DELINEATOR	DOW	REMOVE AND DISPOSE OBSERVATION WELL
34.3.1	GUARDRAIL END SECTION	DP	REMOVE AND DISPOSE PIPE
34.3.2	TERMINAL END SECTION (SINGLE FACE)	DPB	REMOVE AND DISPOSE PAVEMENT AND RIGID BASE
34.3.3	ANCHORAGE DETAILS APPROACH END SECTION	DRB	REMOVE AND DISPOSE RIGID BASE
34.3.4	ANCHORAGE DETAILS TRAILING END SECTION	DS	REMOVE AND DISPOSE SIGN
34.4.0	STEEL BACKED TIMBER GUARDRAIL	DSS	REMOVE AND DISPOSE TRAFFIC SIGNAL SYSTEM
34.4.1	STEEL BACKED TIMBER GUARDRAIL TERMINAL SECTION-TYPE 1	DSW	REMOVE AND DISPOSE SIDEWALK
40.1.0	DOUBLE-FACED PRECAST MEDIAN BARRIER	DTD	REMOVE AND DISPOSE TELEPHONE DUCT BANKS
40.2.0	SINGLE-FACED PRECAST MEDIAN BARRIER	DUP	REMOVE AND DISPOSE UTILITY POLE
40.2.1	SINGLE-FACED PRECAST MEDIAN BARRIER	DWW	REMOVE AND DISPOSE PAVED WATERWAY
40.3.0	PRECAST MEDIAN BARRIER TRANSITION UNIT	FF	FILTER FABRIC RIPRAP FLARED END UNDERLAYMENT
40.5.0	PRECAST MEDIAN BARRIER FOR TEMPORARY TRAFFIC CONTROL	GET	FLARED GUARDRAIL END TREATMENT
43.1.0	CEMENT CONCRETE SIDEWALK	IA	IMPACT ATTENUATOR
43.2.0	BITUMINOUS CONCRETE SIDEWALK	IDL	IMPERVIOUS DITCH LINER
43.3.0	WHEELCHAIR RAMP	LOD	LIMIT OF DISTURBANCE
43.3.1	WHEELCHAIR RAMP FOR LIMITED RIGHT-OF-WAY AREAS	LOR	LIMIT OF REGRADING
43.4.0	DRIVEWAY DEVELOPMENT FOR 3'-0" TRANSITION CURB	LS	4" LOAM AND SEED
43.4.1	DRIVEWAY DEVELOPMENT FOR 6'-0" TRANSITION CURB		
43.5.0	CEMENT CONCRETE DRIVEWAYS		
48.1.0	DETECTABLE WARNING SYSTEM		
51.1.0	TREE PROTECTION DEVICE		
51.1.1	DRIP LINE TREE PROTECTION DEVICE FOR EXISTING TREES		
51.2.0	SHRUB PROTECTION DEVICE		
51.3.0	TREE WELL		
51.4.0	TREE WALL		

ADJUST CATCH BASIN TO GRADE	ADJUST CATCH BASIN TO MANHOLE	ADJUST CURB STOP TO GRADE	ADJUST DRAINAGE MANHOLE TO GRADE	ADJUST ELECTRIC MANHOLE TO GRADE	ADJUST FRAME AND COVER TO GRADE	ADJUST FRAME AND GRATE TO GRADE	ADJUST GAS GATE BOX TO GRADE	ADJUST HANDHOLE TO GRADE	ADJUST SANITARY SEWER MANHOLE TO GRADE	ADJUST TELEPHONE MANHOLE TO GRADE	ADJUST WATER GATE BOX TO GRADE	BITUMINOUS CONCRETE DRIVEWAY 3" BITUMINOUS CONCRETE TYPE I-2 8" GRAVEL BORROW SUBBASE COURSE	BUILD NEW STRUCTURE OVER EXISTING PIPE	CLEAN CATCH BASIN	CUT AND CAP PIPE WITH RESTRAINT (ALL SIZES)	CLEAN AND FLUSH PIPE	CLEARING AND GRUBBING	CLEAN MANHOLE	COLD PLANE	CUT AND PLUG PIPE (ALL TYPES, ALL SIZES)	REMOVE AND DISPOSE BITUMINOUS CURB	REMOVE AND DISPOSE CONCRETE CURB	REMOVE AND DISPOSE CATCH BASIN	REMOVE AND DISPOSE DROP INLET	REMOVE AND DISPOSE FENCE	REMOVE AND DISPOSE FRAME AND COVER	REMOVE AND DISPOSE FLARED END SECTION	REMOVE AND DISPOSE FRAME AND GRATE	REMOVE AND DISPOSE FIRE HYDRANT	REMOVE AND DISPOSE FLEXIBLE PAVEMENT	REMOVE AND DISPOSE GUARDRAIL	REMOVE AND DISPOSE HEADWALL	REMOVE AND DISPOSE HIGHWAY BOUND	REMOVE AND DISPOSE HANDHOLE	REMOVE AND DISPOSE LIGHT AND FOUNDATION	REMOVE AND DISPOSE MEDIAN BARRIER	REMOVE AND DISPOSE MANHOLE	REMOVE AND DISPOSE MEDIAN MARKER	REMOVE AND DISPOSE OBSERVATION WELL	REMOVE AND DISPOSE PIPE	REMOVE AND DISPOSE PAVEMENT AND RIGID BASE	REMOVE AND DISPOSE RIGID BASE	REMOVE AND DISPOSE SIGN	REMOVE AND DISPOSE TRAFFIC SIGNAL SYSTEM	REMOVE AND DISPOSE SIDEWALK	REMOVE AND DISPOSE TELEPHONE DUCT BANKS	REMOVE AND DISPOSE UTILITY POLE	REMOVE AND DISPOSE PAVED WATERWAY	FILTER FABRIC RIPRAP FLARED END UNDERLAYMENT	FLARED GUARDRAIL END TREATMENT	IMPACT ATTENUATOR	IMPERVIOUS DITCH LINER	LIMIT OF DISTURBANCE	LIMIT OF REGRADING	4" LOAM AND SEED
-----------------------------	-------------------------------	---------------------------	----------------------------------	----------------------------------	---------------------------------	---------------------------------	------------------------------	--------------------------	--	-----------------------------------	--------------------------------	--	--	-------------------	---	----------------------	-----------------------	---------------	------------	--	------------------------------------	----------------------------------	--------------------------------	-------------------------------	--------------------------	------------------------------------	---------------------------------------	------------------------------------	---------------------------------	--------------------------------------	------------------------------	-----------------------------	----------------------------------	-----------------------------	---	-----------------------------------	----------------------------	----------------------------------	-------------------------------------	-------------------------	--	-------------------------------	-------------------------	--	-----------------------------	---	---------------------------------	-----------------------------------	--	--------------------------------	-------------------	------------------------	----------------------	--------------------	------------------

FED. ROAD DIV. NO.	STATE	FEDERAL AID PROJECT NO.	FISCAL YEAR	SHEET NO.	TOTAL SHEETS
1	R.I.			2	XX

NFH	NEW FIRE HYDRANT WITH GATE VALVE
NIC	NOT IN THIS CONSTRUCTION CONTRACT
NWB	FURNISH AND INSTALL NEW WATER GATE VALVE BOX
NWVB	FURNISH AND INSTALL NEW WATER GATE VALVE AND BOX
NWCB	FURNISH AND INSTALL NEW WATER CURB STOP BOX
NWSB	FURNISH AND INSTALL NEW WATER CURB STOP AND BOX
PCD	PERMANENT CHECK DAM
PS	4" PLANTABLE SOIL AND SEED
RCB	RECONSTRUCT TYPE "D" CATCH BASIN, TO CATCH BASIN WITH GUTTER INLET
RCM	R.I.D.O.T. COMMUNICATIONS MANHOLE
RHH	REMOVE, HANDLE, HAUL, TRIM, RESET CURB EDGING, STRAIGHT, CIRCULAR (ALL TYPES)
RLP	RELOCATE LAMP POST
RMB	RELOCATE MAILBOX (BY OTHERS)
RPM	REMOVE PAVEMENT MARKINGS
RRP	RIP-RAP PAD (SEE DETAIL)
RRS	REMOVE AND RELOCATE SIGN
RUP	RELOCATE UTILITY POLE (BY OTHERS)
SB	STONE BAFFLE
SBAE	STEEL BEAM BRIDGE CONNECTION APPROACH END (W/O NESTED RAIL)
SBTE	STEEL BEAM BRIDGE CONNECTION TRAILING END (W/NESTED RAIL)
SD-	STRUCTURAL DISPOSITION - SEE CS PAGES OF SPECIFICATION
SF	REMOVE AND STOCKPILE FENCE
SGA	SPECIAL GRADED AGGREGATE
SGC	REMOVE AND STOCKPILE GRANITE CURB
SGR	REMOVE AND STOCKPILE GUARDRAIL
SH	REMOVE AND STOCKPILE HYDRANT
SS	REMOVE AND STOCKPILE SIGN
STS	REMOVE AND STOCKPILE TRAFFIC SIGNAL SYSTEM
TB	CONCRETE THRUST BLOCK
TEP	TIE EXISTING PIPE INTO NEW STRUCTURE
TNP	TIE NEW PIPE INTO EXISTING STRUCTURE
TBT	THRIE BEAM TRANSITION
TBBC	THRIE BEAM BRIDGE CONNECTION
TT	TREE TRIMMING
WCM	4" WOOD CHIP MULCH
4DY	4" EPOXY RESIN PAVEMENT MARKINGS - DOUBLE YELLOW
6W	6" EPOXY RESIN PAVEMENT MARKINGS - WHITE
12W	12" EPOXY RESIN PAVEMENT MARKINGS - WHITE
6WT	6" PREFORMED PATTERNED MARKING (HIGH PERFORMANCE TAPE)
4Y	4" EPOXY RESIN PAVEMENT MARKINGS - YELLOW
6Y	6" EPOXY RESIN PAVEMENT MARKINGS - YELLOW
P.G.L.	PROFILE GRADE LINE

DEPARTMENT OF ENVIRONMENTAL MANAGEMENT  
OFFICE OF WATER RESOURCES  
FRESHWATER WETLANDS PROGRAM  
REVIEWED SITE PLAN APPLICATION NO.: 11-0126  
DATED JUL 26 2011  
SEE LETTER OF SAME DATE.

Environmental Management  
Office of Water Resources

THIS PLAN SHALL NOT BE ALTERED

REVISIONS		
NO.	DATE	BY
1	6/07	TRB

RHODE ISLAND DEPARTMENT OF TRANSPORTATION	
1R IMPROVEMENTS TO SMITH STREET	
PROVIDENCE,	RHODE ISLAND
STANDARD PLAN SYMBOLS & STANDARD LEGEND	
CHECKED BY _____	DATE _____ SCALE NO SCALE

LOUIS V. DILUCCHIO  
No. 4081  
REGISTERED PROFESSIONAL ENGINEER

Gordon R. Archibald, Inc.  
Professional Engineers  
Pawtucket, RI































