

INDEX

SHEET NO.	DESCRIPTION
1	COVER SHEET
2	STANDARD PLAN SYMBOLS & STANDARD LEGEND
3	STANDARD NOTES - 1
4	STANDARD NOTES - 2
5	JOB SPECIFIC PLAN SYMBOLS, LEGEND, & NOTES
6	KEY PLAN
7	TYPICAL SECTION
8-11	GENERAL PLAN NOS. 1-4
12-15	DRAINAGE & UTILITY PLAN NOS. 1-4
16	MISCELLANEOUS DETAILS

STATE OF RHODE ISLAND



DEPARTMENT OF TRANSPORTATION

PLAN OF PROPOSED STATE HIGHWAY

NORTH BROADWAY 1R DEWEY STREET TO CENTRE STREET

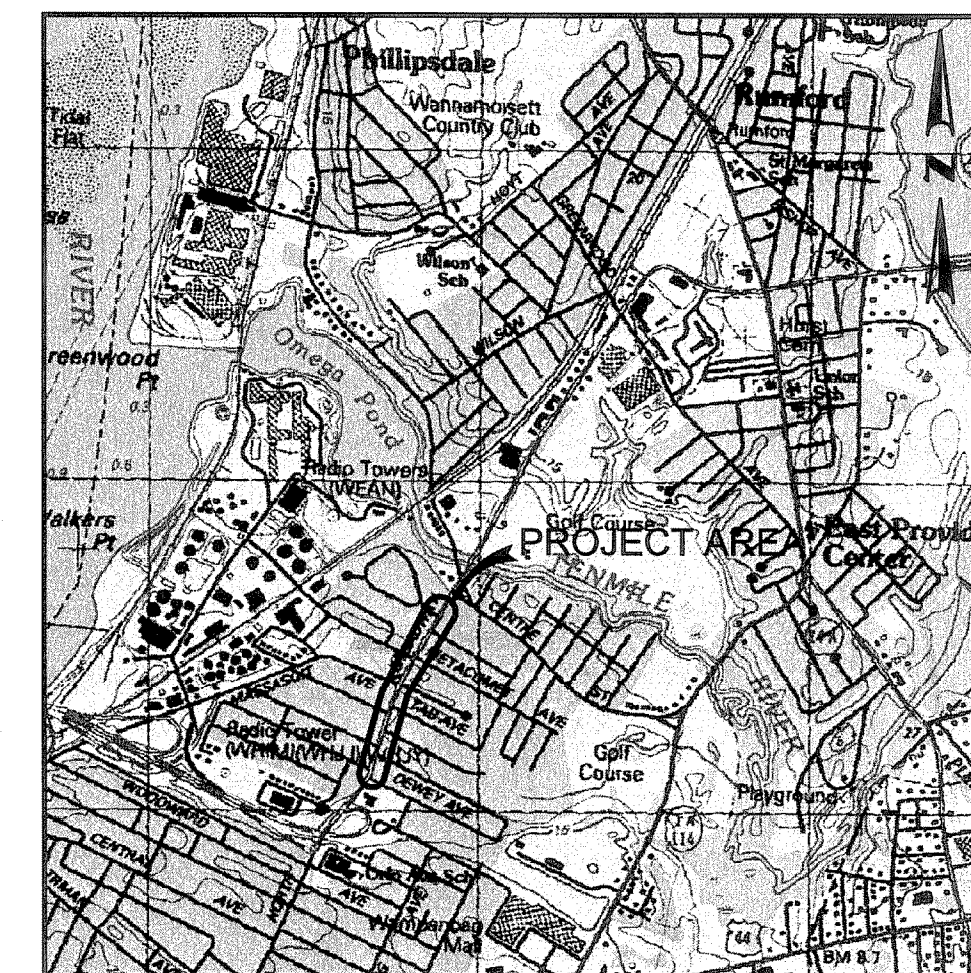
CITY OF EAST PROVIDENCE
COUNTY OF PROVIDENCE

R.I. CONTRACT NO. F.A. PROJECT NO.

PAVEMENT STRUCTURE

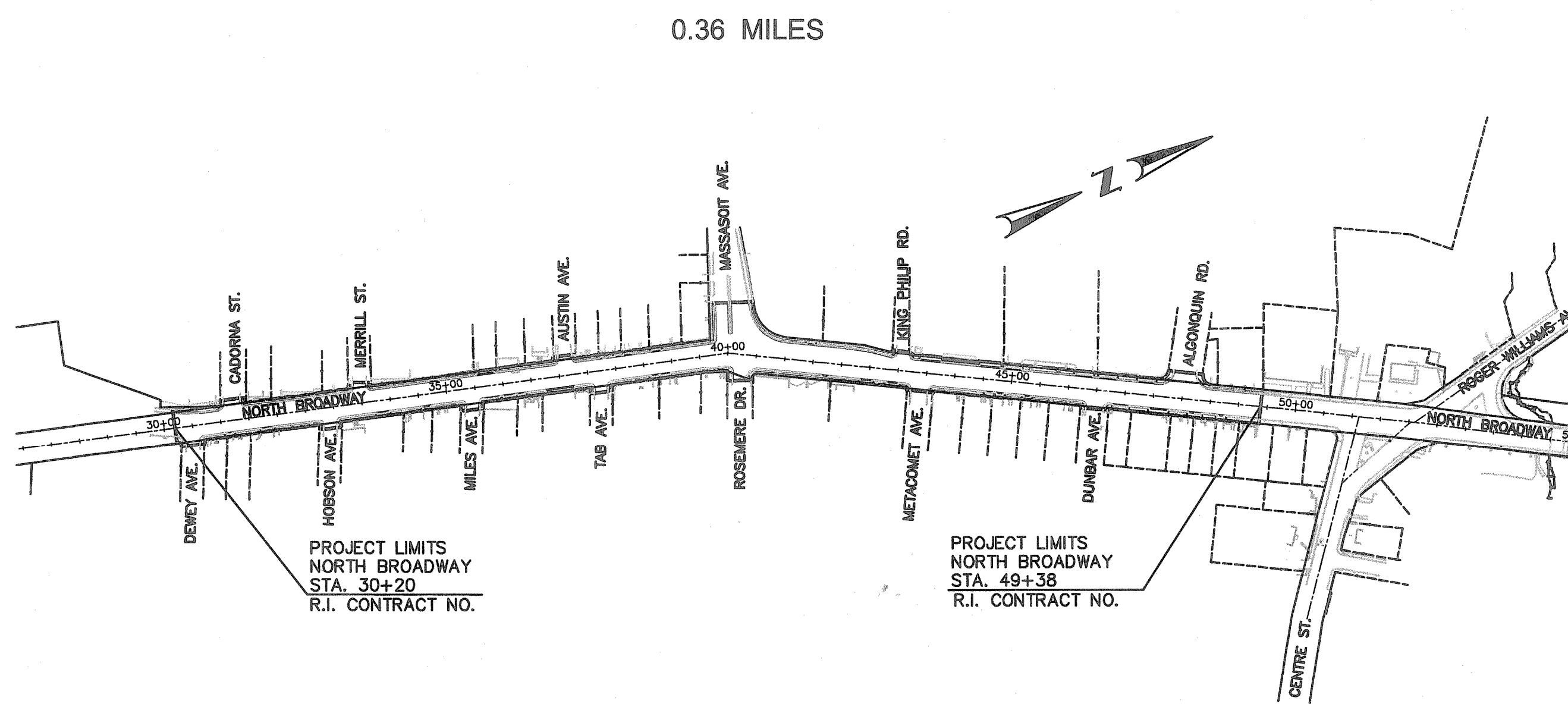
2-INCH BITUMINOUS CONCRETE SURFACE COURSE OVERLAY

FED. ROAD DIV. NO.	STATE	FEDERAL AID PROJECT NO.	FISCAL YEAR	SHEET NO.	TOTAL SHEETS
1	RI		2011	1	16



LOCATION MAP
NOT TO SCALE

DESIGN	DESIGNATION
2009 AADT	11,200 V.P.D.
D	50%
K	10.1%
T	7.5%
DDHV	645 V.P.H.
DHV	1130 V.P.D.
DESIGN SPEED	30 M.P.H.



LAYOUT PLAN
SCALE: 1"=200'

SCALES OF DRAWINGS
Plans 1 inch = 20 feet

BASE OF LEVELS
NGVD 29

R.I. STANDARD SPECIFICATIONS AND STANDARD DETAILS
SPECIFICATIONS TO GOVERN THIS PROJECT ARE THE R.I. STANDARD SPECIFICATIONS FOR ROAD AND BRIDGE CONSTRUCTION, 2004 EDITION, WITH ALL REVISIONS, AND THE STATE AND FEDERAL SPECIAL PROVISIONS INCLUDED IN THE CONTRACT DOCUMENTS. STANDARD DETAILS FOR THIS PROJECT ARE R.I. STANDARD DETAILS, 1998 EDITION, WITH ALL REVISIONS.

CROSSMAN ENGINEERING
a division of Crossman Corporation
151 Centerville Road | Warwick, Rhode Island 02886

Contract Number _____
Number of Sheet 1
Total Sheets 16

HURRICANE EVACUATION ROUTE

This project does not include work on a designated Hurricane Evacuation and Diversionsary Route.

Environmental Management
JUL 30 2009
Office of Water Resources

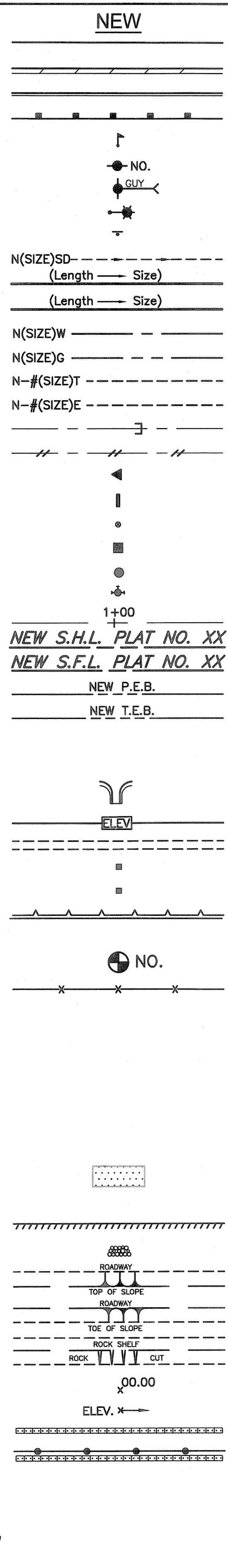
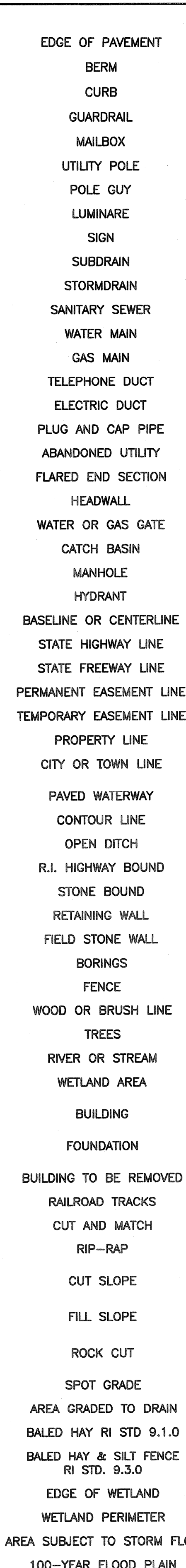
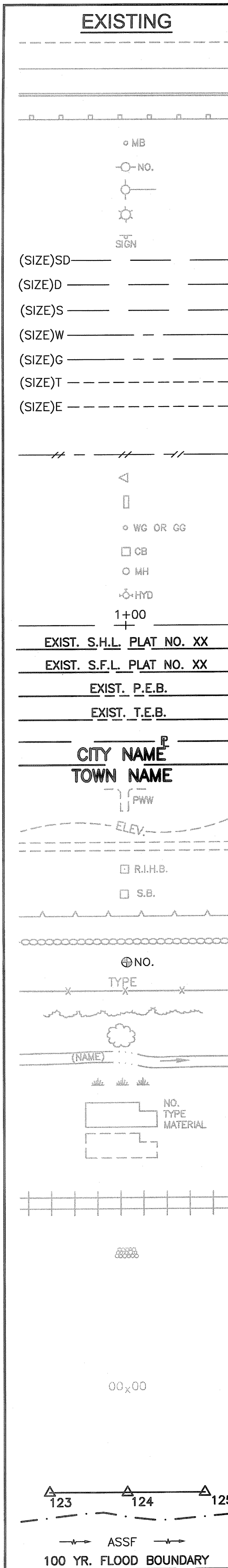
STEVEN M. CABRAL
No. 4847
REGISTERED PROFESSIONAL ENGINEER

RIDEM SUBMISSION
JUNE 2011

DEPARTMENT OF ENVIRONMENTAL MANAGEMENT
OFFICE OF WATER RESOURCES
FRESHWATER WETLANDS PROGRAM
REVIEWED SITE PLAN, APPLICATION NO.: 11-0128
DATED JUL 27 2011
SEE LETTER OF SAME DATE.
Charles A. Herbert

R.I. DEPARTMENT OF TRANSPORTATION	
APPROVED	DATE
DEPUTY CHIEF ENGINEER	DATE
APPROVED	DATE
CHIEF ENGINEER	DATE
APPROVED	DATE
DIRECTOR	DATE
DEPARTMENT OF TRANSPORTATION FEDERAL HIGHWAY ADMINISTRATION	
APPROVED	DATE
DIVISION ADMINISTRATOR	DATE

FED. ROAD DIV. NO.	STATE	FEDERAL AID PROJECT NO.	FISCAL YEAR	SHEET NO.	TOTAL SHEETS
1	RI		2011	2	16



1.1.0	UNDERDRAIN	7.4.2	GRANITE TRANSITION CURB (VERTICAL FACE TO SLOPE FACE)	AB	ADJUST CATCH BASIN TO GRADE
1.3.0	CONCRETE CONNECTING COLLAR	7.5.0	BITUMINOUS CONCRETE LIP CURB	ABM	ADJUST CATCH BASIN TO MANHOLE
2.1.0	CONCRETE HEADWALLS FOR PIPE CULVERTS	7.5.1A	BITUMINOUS BERM (CONSTRUCTION METHOD A)	AC	ADJUST CURB STOP TO GRADE
2.2.0	STANDARD HEADWALLS FOR MULTIPLE 3'-6" TO 7'-0" PIPE CULVERTS	7.5.1B	BITUMINOUS BERM (CONSTRUCTION METHOD B)	AD	ADJUST DRAINAGE MANHOLE TO GRADE
2.3.0 (DIA.)	PRECAST CONCRETE FLARED END SECTION	7.6.0	CURB SETTING DETAIL	AE	ADJUST ELECTRIC MANHOLE TO GRADE
3.2.0	BRICK/SOLID BLOCK 4'-0" ROUND MANHOLE	8.2.0	BITUMINOUS CONCRETE DITCH	AFC	ADJUST FRAME AND COVER TO GRADE
3.2.1 (DIA.)	BRICK/SOLID BLOCK 5'-0" OR 6'-0" ROUND MANHOLE	8.3.0	RIP-RAP DITCH	AFG	ADJUST FRAME AND GRATE TO GRADE
3.3.0	BRICK/SOLID BLOCK TYPE "D" SQUARE CATCH BASIN	8.4.0	PAVED WATERWAY	AG	ADJUST GAS GATE BOX TO GRADE
3.3.2	BRICK/SOLID BLOCK TYPE "F" SQUARE CATCH BASIN	9.1.0	BALED HAY EROSION CHECK	AHH	ADJUST HANDHOLE TO GRADE
3.3.3	SOLID BLOCK FLUSH SQUARE CATCH BASIN	9.2.0	SILT FENCE DETAIL	AS	ADJUST SANITARY SEWER MANHOLE TO GRADE
3.4.0	BRICK/SOLID BLOCK TYPE "D" ROUND CATCH BASIN	9.3.0	BALED HAY DITCH EROSION CHECK AND SILT FENCE COMBINED	AT	ADJUST TELEPHONE MANHOLE TO GRADE
3.4.1	BRICK/SOLID BLOCK ROUND CATCH BASIN WITH GUTTER INLET	9.4.0	BALED HAY DITCH AND SWALE EROSION CHECK	AW	ADJUST WATER GATE BOX TO GRADE
3.4.2	BRICK/SOLID BLOCK TYPE "F" ROUND CATCH BASIN	9.5.0	LOG AND HAY CHECK DAM	BCD	BITUMINOUS CONCRETE DRIVEWAY
3.4.3	BRICK/SOLID BLOCK TYPE "R" CATCH BASIN	9.7.0	DEWATERING BASIN		3" BITUMINOUS CONCRETE TYPE I-2
3.4.4	SOLID BLOCK FLUSH ROUND CATCH BASIN	9.8.0	BALED HAY CATCH BASIN INLET PROTECTION		8" GRAVEL BORROW SUBBASE COURSE
3.4.5 (DIA.)	BRICK/SOLID BLOCK 5'-0" OR 6'-0" ROUND CATCH BASIN	9.9.0	CONSTRUCTION ACCESS	BPS	BUILD NEW STRUCTURE OVER EXISTING PIPE
3.5.0	SOLID BLOCK SHALLOW TYPE "F" SQUARE CATCH BASIN	10.1.0	WET STONE MASONRY RETAINING WALL	CCB	CLEAN CATCH BASIN
3.5.1 (SIZE)	SOLID BLOCK SHALLOW 5'-0" OR 6'-0" SQUARE CATCH BASIN	10.2.0	RUBBLE MASONRY WALL	CCP	CUT AND CAP PIPE WITH RESTRAINT (ALL SIZES)
3.6.0	BRICK/SOLID BLOCK DROP INLET	10.3.0	CONCRETE RETAINING WALL	CFP	CLEAN AND FLUSH PIPE
3.7.0 (DIA.)	BRICK/SOLID BLOCK ROUND MANHOLE OR CATCH BASIN GREATER THAN 12'-0"	10.4.0	STONE MASONRY STEPS	CG	CLEARING AND GRUBBING
4.2.0	PRECAST 4'-0" ROUND MANHOLE	14.1.0	CONCRETE HIGHWAY BOUND	CMH	CLEAN MANHOLE
4.2.1	PRECAST 5'-0" ROUND MANHOLE	15.1.0	POST AND MOUNTINGS FOR RURAL MAILBOX	CP (DEPTH)	COLD PLANE
4.2.2	PRECAST 6'-0" ROUND MANHOLE	15.2.0 (NO.)	POST AND MULTIPLE MOUNTINGS FOR RURAL MAILBOXES	CPP	CUT AND PLUG PIPE (ALL TYPES, ALL SIZES)
4.3.0 (SIZE)	PRECAST 4'-0" OR 6'-0" SQUARE MANHOLE OR CATCH BASIN	18.2.0	PRECAST TYPE "A" HANDHOLE	DB	REMOVE AND DISPOSE BITUMINOUS CURB
4.4.0 (DIA.)	PRECAST 4'-0", 5'-0", OR 6'-0" ROUND CATCH BASIN	18.2.2	HEAVY DUTY TYPE "H" HANDHOLE	DC	REMOVE AND DISPOSE CONCRETE CURB
4.5.0	PRECAST CONCRETE DROP INLET	18.3.0	ALUMINUM LIGHTING STANDARDS	DCB	REMOVE AND DISPOSE CATCH BASIN
4.5.1	PRECAST CONCRETE DROP INLET LATERAL OUTLET	20.2.0	BI-DIRECTIONAL CONTROL DEVICE	DDI	REMOVE AND DISPOSE DROP INLET
4.5.2	PRECAST CONCRETE DROP INLET LONGITUDINAL OUTLET	24.6.1	STREET SIGN MOUNTING DETAIL	DF	REMOVE AND DISPOSE FENCE
5.3.0	CATCH BASIN AND MANHOLE STEP	26.2.0	POLYETHYLENE DRUM WITH MARKINGS	DFC	REMOVE AND DISPOSE FRAME AND COVER
5.4.0	CONCRETE COLLARS	26.3.0	PVC PLASTIC PIPE TYPE III BARRICADE	DFE	REMOVE AND DISPOSE FLARED END SECTION
6.1.0	LIGHT-DUTY SQUARE FRAME AND ROUND COVER	31.1.0	CHAIN LINK FENCE 3'-0" TO 4'-0"	DFG	REMOVE AND DISPOSE FRAME AND GRATE
6.1.1	HEAVY DUTY SQUARE FRAME AND ROUND COVER	31.2.0	CHAIN LINK FENCE 5'-0" TO 6'-0"	DFH	REMOVE AND DISPOSE FIRE HYDRANT
6.2.0	LIGHT-DUTY ROUND FRAME AND COVER	31.2.1	CHAIN LINK FENCE 5'-0" TO 6'-0" INTERMEDIATE POST	DFP	REMOVE AND DISPOSE FLEXIBLE PAVEMENT
6.2.1	HEAVY-DUTY ROUND FRAME AND COVER	31.3.0	WOVEN WIRE RIGHT-OF-WAY FENCE (STEEL POST)	DG	REMOVE AND DISPOSE GUARDRAIL
6.3.0	SQUARE FRAME AND GRATE	34.1.0	TYPICAL GUARDRAIL INSTALLATION	DH	REMOVE AND DISPOSE HEADWALL
6.3.1	SQUARE FRAME AND GRATE	34.2.0	STEEL BEAM GUARDRAIL	DHB	REMOVE AND DISPOSE HIGHWAY BOUND
6.3.2	SQUARE FRAME AND GRATE (BICYCLE SAFE)	34.2.1	STEEL BEAM GUARDRAIL DETAILS	DHH	REMOVE AND DISPOSE HANDHOLE
6.3.3	HIGH CAPACITY FRAME AND GRATE	34.2.2	STEEL BEAM GUARDRAIL DOUBLE FACED ASSEMBLY	DL	REMOVE AND DISPOSE LIGHT AND FOUNDATION
6.3.4	HIGH CAPACITY FRAME AND GRATE (BICYCLE SAFE)	34.2.3	STEEL BEAM GUARDRAIL FIXTURES	DMB	REMOVE AND DISPOSE MEDIAN BARRIER
6.4.0	ROUND FRAME AND GRATE	34.2.5	STEEL BEAM GUARDRAIL REFLECTORIZED TRIANGULAR DELINEATOR	DMH	REMOVE AND DISPOSE MANHOLE
7.1.0S	PRECAST CONCRETE CURB (STRAIGHT)	34.3.1	GUARDRAIL END SECTION	DMM	REMOVE AND DISPOSE MEDIAN MARKER
7.1.0C	PRECAST CONCRETE CURB (CIRCULAR)	34.3.2	TERMINAL END SECTION (SINGLE FACE)	DOW	REMOVE AND DISPOSE MEDIAN MARKER
7.1.1	3'-0" PRECAST CONCRETE TRANSITION CURB	34.3.3	ANCHORAGE DETAILS APPROACH END SECTION	DP	REMOVE AND DISPOSE OBSERVATION WELL
7.1.2	6'-0" PRECAST CONCRETE TRANSITION CURB	34.3.4	ANCHORAGE DETAILS TRAILING END SECTION	DPB	REMOVE AND DISPOSE PIPE
7.1.4	PRECAST 2'-0" RADIUS CORNER	34.4.0	STEEL BACKED TIMBER GUARDRAIL	DRB	REMOVE AND DISPOSE PAVEMENT AND RIGID BASE
7.1.5	PRECAST CONCRETE INLET STONE (FOR SQUARE CATCH BASIN)	34.4.1	STEEL BACKED TIMBER GUARDRAIL TERMINAL SECTION-TYPE 1	DS	REMOVE AND DISPOSE RIGID BASE
7.1.6	PRECAST CONCRETE INLET STONE (FOR ROUND CATCH BASIN)	40.1.0	DOUBLE-FACED PRECAST MEDIAN BARRIER	DSS	REMOVE AND DISPOSE SIGN
7.1.7	PRECAST CONCRETE APRON STONE (FOR SQUARE CATCH BASIN)	40.2.0	SINGLE-FACED PRECAST MEDIAN BARRIER	DSW	REMOVE AND DISPOSE TRAFFIC SIGNAL SYSTEM
7.1.8	PRECAST CONCRETE APRON STONE (FOR ROUND CATCH BASIN)	40.2.1	SINGLE-FACED PRECAST MEDIAN BARRIER	DTD	REMOVE AND DISPOSE SIDEWALK
7.2.0S	PRECAST CONCRETE SLOPED FACE CURB (STRAIGHT)	40.3.0	PRECAST CONCRETE SLOPED FACE CURB (STRAIGHT)	DUP	REMOVE AND DISPOSE TELEPHONE DUCT
7.2.0C	PRECAST CONCRETE SLOPED FACE CURB (CIRCULAR)	40.5.0	PRECAST CONCRETE SLOPED FACE CURB (CIRCULAR)	DWW	REMOVE AND DISPOSE UTILITY POLE
7.2.1	PRECAST CONCRETE SLOPED FACE TRANSITION CURB	43.1.0	PRECAST CONCRETE SLOPED FACE TRANSITION CURB	FF	REMOVE AND DISPOSE PAVED WATERWAY
7.2.2	PRECAST CONCRETE TRANSITION CURB (VERTICAL FACE TO SLOPED FACE)	43.2.0	PRECAST CONCRETE TRANSITION CURB (VERTICAL FACE TO SLOPED FACE)	GET	REMOVE AND DISPOSE PAVED WATERWAY
7.3.0S	GRANITE CURB (STRAIGHT)	43.3.0	GRANITE CURB (STRAIGHT)	IA	FILTER FABRIC RIPRAP FLARED END UNDERLAYMENT
7.3.0C	GRANITE CURB (CIRCULAR)	43.3.1	GRANITE CURB (CIRCULAR)	IDL	FLARED GUARDRAIL END TREATMENT
7.3.1	3'-0" GRANITE TRANSITION CURB	43.4.0	6'-0" GRANITE TRANSITION CURB	LOD	IMPACT ATTENUATOR
7.3.2	6'-0" GRANITE TRANSITION CURB	43.4.1	GRANITE WHEELCHAIR RAMP TRANSITION CURB	LOR	IMPERVIOUS DITCH LINER
7.3.3	GRANITE WHEELCHAIR RAMP TRANSITION CURB	43.5.0	GRANITE INLET STONE (FOR SQUARE CATCH BASIN)	LS	LIMIT OF DISTURBANCE
7.3.4	GRANITE 2'-0" RADIUS CORNER	48.1.0	GRANITE INLET STONE (FOR ROUND CATCH BASIN)		LIMIT OF REGRADING
7.3.5	GRANITE INLET STONE (FOR SQUARE CATCH BASIN)	51.1.0	GRANITE INLET STONE (FOR ROUND CATCH BASIN)		4" LOAM AND SEED
7.3.6	GRANITE INLET STONE (FOR ROUND CATCH BASIN)	51.1.1	GRANITE APRON STONE (FOR SQUARE CATCH BASIN)		
7.3.7	GRANITE APRON STONE (FOR SQUARE CATCH BASIN)	51.2.0	GRANITE APRON STONE (FOR ROUND CATCH BASIN)		
7.3.8	GRANITE APRON STONE (FOR ROUND CATCH BASIN)	51.3.0	GRANITE SLOPED FACE CURB		
7.4.0	GRANITE SLOPED FACE CURB	51.4.0	GRANITE SLOPED FACE TRANSITION CURB		

7.4.2	GRANITE TRANSITION CURB (VERTICAL FACE TO SLOPE FACE)	AB	ADJUST CATCH BASIN TO GRADE
7.5.0	BITUMINOUS CONCRETE LIP CURB	ABM	ADJUST CATCH BASIN TO MANHOLE
7.5.1A	BITUMINOUS BERM (CONSTRUCTION METHOD A)	AC	ADJUST CURB STOP TO GRADE
7.5.1B	BITUMINOUS BERM (CONSTRUCTION METHOD B)	AD	ADJUST DRAINAGE MANHOLE TO GRADE
7.6.0	CURB SETTING DETAIL	AE	ADJUST ELECTRIC MANHOLE TO GRADE
8.2.0	BITUMINOUS CONCRETE DITCH	AFC	ADJUST FRAME AND COVER TO GRADE
8.3.0	RIP-RAP DITCH	AFG	ADJUST FRAME AND GRATE TO GRADE
8.4.0	PAVED WATERWAY	AG	ADJUST GAS GATE BOX TO GRADE
9.1.0	BALED HAY EROSION CHECK	AHH	ADJUST HANDHOLE TO GRADE
9.2.0	SILT FENCE DETAIL	AS	ADJUST SANITARY SEWER MANHOLE TO GRADE
9.3.0	BALED HAY DITCH EROSION CHECK AND SILT FENCE COMBINED	AT	ADJUST TELEPHONE MANHOLE TO GRADE
9.4.0	BALED HAY DITCH AND SWALE EROSION CHECK	AW	ADJUST WATER GATE BOX TO GRADE
9.5.0	LOG AND HAY CHECK DAM	BCD	BITUMINOUS CONCRETE DRIVEWAY
9.7.0	DEWATERING BASIN		3" BITUMINOUS CONCRETE TYPE I-2
9.8.0	BALED HAY CATCH BASIN INLET PROTECTION		8" GRAVEL BORROW SUBBASE COURSE
9.9.0	CONSTRUCTION ACCESS	BPS	BUILD NEW STRUCTURE OVER EXISTING PIPE
10.1.0	WET STONE MASONRY RETAINING WALL	CCB	CLEAN CATCH BASIN
10.2.0	RUBBLE MASONRY WALL	CCP	CUT AND CAP PIPE WITH RESTRAINT (ALL SIZES)
10.3.0	CONCRETE RETAINING WALL	CFP	CLEAN AND FLUSH PIPE
10.4.0	STONE MASONRY STEPS	CG	CLEARING AND GRUBBING
14.1.0	CONCRETE HIGHWAY BOUND	CMH	CLEAN MANHOLE
15.1.0	POST AND MOUNTINGS FOR RURAL MAILBOX	CP (DEPTH)	COLD PLANE
15.2.0 (NO.)	POST AND MULTIPLE MOUNTINGS FOR RURAL MAILBOXES	CPP	CUT AND PLUG PIPE (ALL TYPES, ALL SIZES)
18.2.0	PRECAST TYPE "A" HANDHOLE	DB	REMOVE AND DISPOSE BITUMINOUS CURB
18.2.2	HEAVY DUTY TYPE "H" HANDHOLE	DC	REMOVE AND DISPOSE CONCRETE CURB
18.3.0	ALUMINUM LIGHTING STANDARDS	DCB	REMOVE AND DISPOSE CATCH BASIN
20.2.0	BI-DIRECTIONAL CONTROL DEVICE	DDI	REMOVE AND DISPOSE DROP INLET
24.6.1	STREET SIGN MOUNTING DETAIL	DF	REMOVE AND DISPOSE FENCE
26.2.0	POLYETHYLENE DRUM WITH MARKINGS	DFC	REMOVE AND DISPOSE FRAME AND COVER
26.3.0	PVC PLASTIC PIPE TYPE III BARRICADE	DFE	REMOVE AND DISPOSE FLARED END SECTION
31.1.0	CHAIN LINK FENCE 3'-0" TO 4'-0"	DFG	REMOVE AND DISPOSE FRAME AND GRATE
31.2.0	CHAIN LINK FENCE 5'-0" TO 6'-0"	DFH	REMOVE AND DISPOSE FIRE HYDRANT
31.2.1	CHAIN LINK FENCE 5'-0" TO 6'-0" INTERMEDIATE POST	DFP	REMOVE AND DISPOSE FLEXIBLE PAVEMENT
31.3.0	WOVEN WIRE RIGHT-OF-WAY FENCE (STEEL POST)	DG	REMOVE AND DISPOSE GUARDRAIL
34.1.0	TYPICAL GUARDRAIL INSTALLATION	DH	REMOVE AND DISPOSE HEADWALL
34.2.0	STEEL BEAM GUARDRAIL	DHB	REMOVE AND DISPOSE HIGHWAY BOUND
34.2.1	STEEL BEAM GUARDRAIL DETAILS	DHH	REMOVE AND DISPOSE HANDHOLE
34.2.2	STEEL BEAM GUARDRAIL DOUBLE FACED ASSEMBLY	DL	REMOVE AND DISPOSE LIGHT AND FOUNDATION
34.2.3	STEEL BEAM GUARDRAIL FIXTURES	DMB	REMOVE AND DISPOSE MEDIAN BARRIER
34.2.5	STEEL BEAM GUARDRAIL REFLECTORIZED TRIANGULAR DELINEATOR	DMH	REMOVE AND DISPOSE MANHOLE
34.3.1	GUARDRAIL END SECTION	DMM	REMOVE AND DISPOSE MEDIAN MARKER
34.3.2	TERMINAL END SECTION (SINGLE FACE)	DOW	REMOVE AND DISPOSE MEDIAN MARKER
34.3.3	ANCHORAGE DETAILS APPROACH END SECTION	DP	REMOVE AND DISPOSE OBSERVATION WELL
34.3.4	ANCHORAGE DETAILS TRAILING END SECTION	DPB	REMOVE AND DISPOSE PIPE
34.4.0	STEEL BACKED TIMBER GUARDRAIL	DRB	REMOVE AND DISPOSE PAVEMENT AND RIGID BASE
34.4.1	STEEL BACKED TIMBER GUARDRAIL TERMINAL SECTION-TYPE 1	DS	REMOVE AND DISPOSE RIGID BASE
40.1.0	DOUBLE-FACED PRECAST MEDIAN BARRIER	DSS	REMOVE AND DISPOSE SIGN
40.2.0	SINGLE-FACED PRECAST MEDIAN BARRIER	DSW	REMOVE AND DISPOSE TRAFFIC SIGNAL SYSTEM
40.2.1	SINGLE-FACED PRECAST MEDIAN BARRIER	DTD	REMOVE AND DISPOSE SIDEWALK
40.3.0	PRECAST CONCRETE SLOPED FACE CURB (STRAIGHT)	DUP	REMOVE AND DISPOSE TELEPHONE DUCT
40.5.0	PRECAST CONCRETE SLOPED FACE CURB (CIRCULAR)	DWW	REMOVE AND DISPOSE UTILITY POLE
43.1.0	PRECAST CONCRETE SLOPED FACE TRANSITION CURB	FF	REMOVE AND DISPOSE PAVED WATERWAY
43.2.0	PRECAST CONCRETE TRANSITION CURB (VERTICAL FACE TO SLOPED FACE)	GET	REMOVE AND DISPOSE PAVED WATERWAY
43.3.0	GRANITE CURB (STRAIGHT)	IA	FILTER FABRIC RIPRAP FLARED END UNDERLAYMENT
43.3.1	GRANITE CURB (CIRCULAR)	IDL	FLARED GUARDRAIL END TREATMENT
43.4.0	3'-0" GRANITE TRANSITION CURB	LOD	IMPACT ATTENUATOR
43.4.1	6'-0" GRANITE TRANSITION CURB	LOR	IMPERVIOUS DITCH LINER
43.5.0	GRANITE WHEELCHAIR RAMP TRANSITION CURB	LS	LIMIT OF DISTURBANCE
48.1.0	GRANITE 2'-0" RADIUS CORNER		LIMIT OF REGRADING
51.1.0	GRANITE INLET STONE (FOR SQUARE CATCH BASIN)		4" LOAM AND SEED
51.1.1	GRANITE INLET STONE (FOR ROUND CATCH BASIN)		
51.2.0	GRANITE APRON STONE (FOR SQUARE CATCH BASIN)		
51.3.0	GRANITE APRON STONE (FOR ROUND CATCH BASIN)		
51.4.0	GRANITE SLOPED FACE CURB		

AB	ADJUST CATCH BASIN TO GRADE
ABM	ADJUST CATCH BASIN TO MANHOLE
AC	ADJUST CURB STOP TO GRADE
AD	ADJUST DRAINAGE MANHOLE TO GRADE
AE	ADJUST ELECTRIC MANHOLE TO GRADE
AFC	ADJUST FRAME AND COVER TO GRADE
AFG	ADJUST FRAME AND GRATE TO GRADE
AG	ADJUST GAS GATE BOX TO GRADE
AHH	ADJUST HANDHOLE TO GRADE
AS	ADJUST SANITARY SEWER MANHOLE TO GRADE
AT	ADJUST TELEPHONE MANHOLE TO GRADE
AW	ADJUST WATER GATE BOX TO GRADE
BCD	BITUMINOUS CONCRETE DRIVEWAY
	3" BITUMINOUS CONCRETE TYPE I-2
	8" GRAVEL BORROW SUBBASE COURSE
BPS	BUILD NEW STRUCTURE OVER EXISTING PIPE
CCB	CLEAN CATCH BASIN
CCP	CUT AND CAP PIPE WITH RESTRAINT (ALL SIZES)
CFP	CLEAN AND FLUSH PIPE
CG	CLEARING AND GRUBBING
CMH	CLEAN MANHOLE
CP (DEPTH)	COLD PLANE
CPP	CUT AND PLUG PIPE (ALL TYPES, ALL SIZES)
DB	REMOVE AND DISPOSE BITUMINOUS CURB
DC	REMOVE AND DISPOSE CONCRETE CURB
DCB	REMOVE AND DISPOSE CATCH BASIN
DDI	REMOVE AND DISPOSE DROP INLET
DF	REMOVE AND DISPOSE FENCE
DFC	REMOVE AND DISPOSE FRAME AND COVER
DFE	REMOVE AND DISPOSE FLARED END SECTION
DFG	REMOVE AND DISPOSE FRAME AND GRATE
DFH	REMOVE AND DISPOSE FIRE HYDRANT
DFP	REMOVE AND DISPOSE FLEXIBLE PAVEMENT
DG	REMOVE AND DISPOSE GUARDRAIL
DH	REMOVE AND DISPOSE HEADWALL
DHB	REMOVE AND DISPOSE HIGHWAY BOUND
DHH	REMOVE AND DISPOSE HANDHOLE
DL	REMOVE AND DISPOSE LIGHT AND FOUNDATION
DMB	REMOVE AND DISPOSE MEDIAN BARRIER
DMH	REMOVE AND DISPOSE MANHOLE
DMM	REMOVE AND DISPOSE MEDIAN MARKER
DOW	REMOVE AND DISPOSE MEDIAN MARKER
DP	REMOVE AND DISPOSE OBSERVATION WELL
DPB	REMOVE AND DISPOSE PIPE
DRB	REMOVE AND DISPOSE PAVEMENT AND RIGID BASE
DS	REMOVE AND DISPOSE RIGID BASE
DSS	REMOVE AND DISPOSE SIGN
DSW	REMOVE AND DISPOSE TRAFFIC SIGNAL SYSTEM
DTD	REMOVE AND DISPOSE SIDEWALK
DUP	REMOVE AND DISPOSE TELEPHONE DUCT
DWW	REMOVE AND DISPOSE UTILITY POLE
FF	REMOVE AND DISPOSE PAVED WATERWAY
GET	REMOVE AND DISPOSE PAVED WATERWAY
IA	FILTER FABRIC RIPRAP FLARED END UNDERLAYMENT
IDL	FLARED GUARDRAIL END TREATMENT
LOD	IMPACT ATTENUATOR
LOR	IMPERVIOUS DITCH LINER
LS	LIMIT OF DISTURBANCE

NFH	NEW FIRE HYDRANT WITH GATE VALVE
NIC	NOT IN THIS CONSTRUCTION CONTRACT
NWB	FURNISH AND INSTALL NEW WATER GATE VALVE BOX
NWVB	FURNISH AND INSTALL NEW WATER GATE VALVE AND BOX
NWCB	FURNISH AND INSTALL NEW WATER CURB STOP BOX
NWSB	FURNISH AND INSTALL NEW WATER CURB STOP AND BOX
PCD	PERMANENT CHECK DAM
PS	4" PLANTABLE SOIL AND SEED
RCB	RECONSTRUCT TYPE "D" CATCH BASIN, TO CATCH BASIN WITH GUTTER INLET
RCM	R.I.D.O.T. COMMUNICATIONS MANHOLE
RHH	REMOVE, HANDLE, HAUL, TRIM, RESET CURB EDGING, STRAIGHT, CIRCULAR (ALL TYPES)
RLP	RELOCATE LAMP POST
RMB	RELOCATE MAILBOX (BY OTHERS)
RPM	REMOVE PAVEMENT MARKINGS
RRP	RIP-RAP PAD (SEE DETAIL)
RRS	REMOVE AND RELOCATE SIGN
RUP	RELOCATE UTILITY POLE (BY OTHERS)
SB	STONE BAFFLE
SBAE	STEEL BEAM BRIDGE CONNECTION APPROACH END (W/O NESTED RAIL)
SBTE	STEEL BEAM BRIDGE CONNECTION TRAILING END (W/NESTED RAIL)
SD-	STRUCTURAL DISPOSITION - SEE CS PAGES OF SPECIFICATION
SF	REMOVE AND STOCKPILE FENCE
SGA	SPECIAL GRADED AGGREGATE
SGC	REMOVE AND STOCKPILE GRANITE CURB
SGR	REMOVE AND STOCKPILE GUARDRAIL
SH	REMOVE AND STOCKPILE HYDRANT
SS	REMOVE AND STOCKPILE SIGN
STS	REMOVE AND STOCKPILE TRAFFIC SIGNAL SYSTEM
TB	CONCRETE THRUST BLOCK
TEP	TIE EXISTING PIPE INTO NEW STRUCTURE
TNP	TIE NEW PIPE INTO EXISTING STRUCTURE
TBT	THREE BEAM TRANSITION
TBBC	THREE BEAM BRIDGE CONNECTION
TT	TREE TRIMMING
WCM	4" WOOD CHIP MULCH
4DY	4" EPOXY RESIN PAVEMENT MARKINGS - DOUBLE YELLOW
6W	6" EPOXY RESIN PAVEMENT MARKINGS - WHITE
12W	12" EPOXY RESIN PAVEMENT MARKINGS - WHITE

