

- NOTES:**
- THE EDGE OF WETLAND AS SHOWN ON THIS DRAWING WAS IDENTIFIED AND FLAGGED BY PARE ENGINEERING CORP. ON OCTOBER 15, 2009.
 - ALL DISTURBED AREAS SHALL BE SEEDED WITH WILDLIFE CONSERVATION GRASS MIX FOR A PERMANENT COVER.

INSPECTION AND MAINTENANCE SCHEDULE

EROSION CONTROL MEASURES WILL BE MONITORED IN ACCORDANCE WITH THE LANDFILL'S EROSION AND SEDIMENTATION CONTROL PLAN AS FOLLOWS:

- DAILY:**
- DURING PERIODS OF HEAVY RAIN OR MELTING ICE AND SNOW, ALL EROSION CONTROL MEASURES WILL BE INSPECTED DAILY AND CORRECTIVE MEASURES WILL BE PERFORMED AS REQUIRED.

- WEEKLY:**
- NEWLY SEEDDED SURFACES WILL BE MONITORED TO ENSURE THAT SEED AND MULCH REMAIN IN PLACE AND NO WASHOUTS HAVE OCCURRED.
 - MULCH COVER AND EROSION BLANKETS WILL BE MONITORED FOR PROPER ANCHORING AND IDENTIFICATION OF ANY WASHOUTS.
 - HAY BALES AND SILTATION BARRIERS WILL BE MONITORED TO ENSURE THAT SEDIMENT ACCUMULATION DOES NOT EXCEED MORE THAN HALF THE HEIGHT OF THE BARRIER AND THAT THE BARRIER HAS NOT BEEN BREACHED OR DISTURBED.

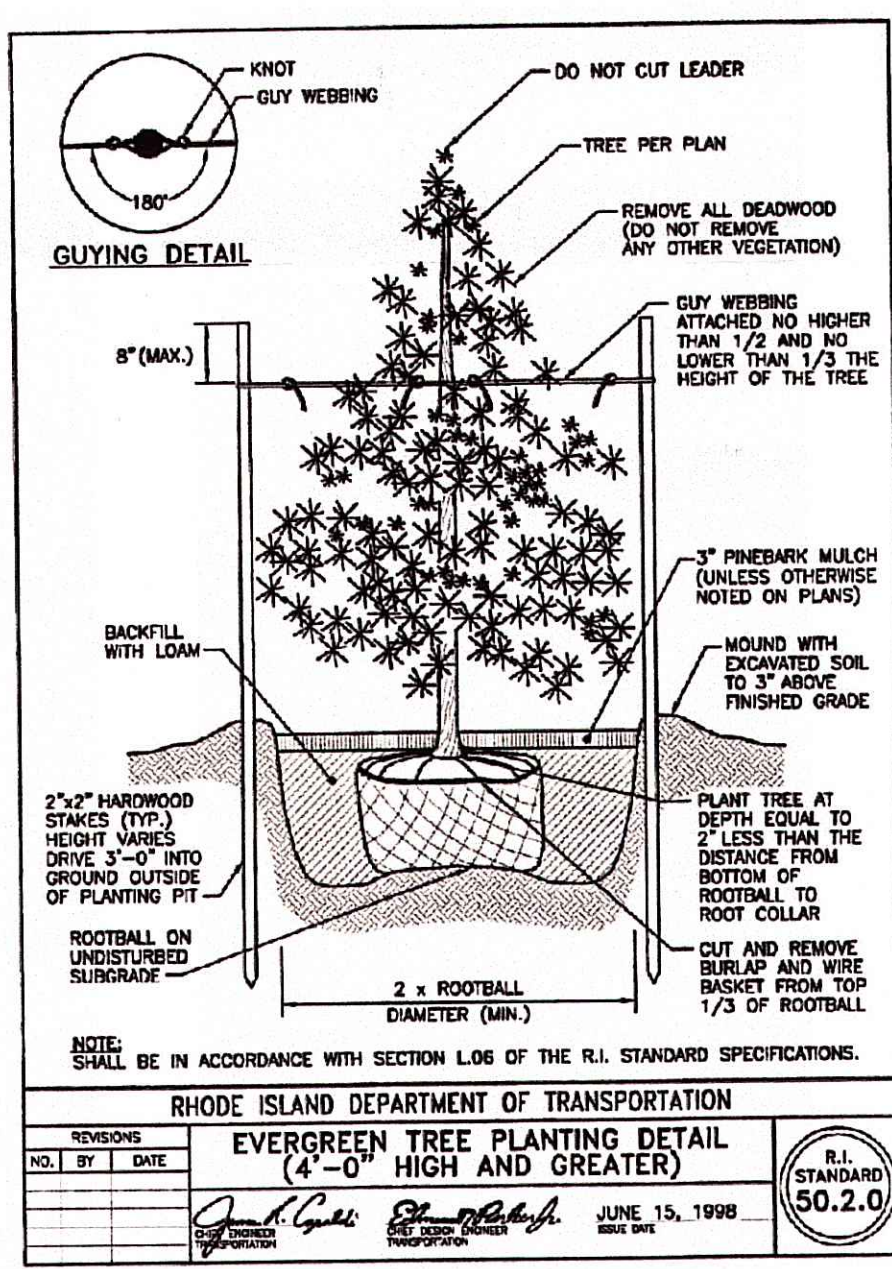
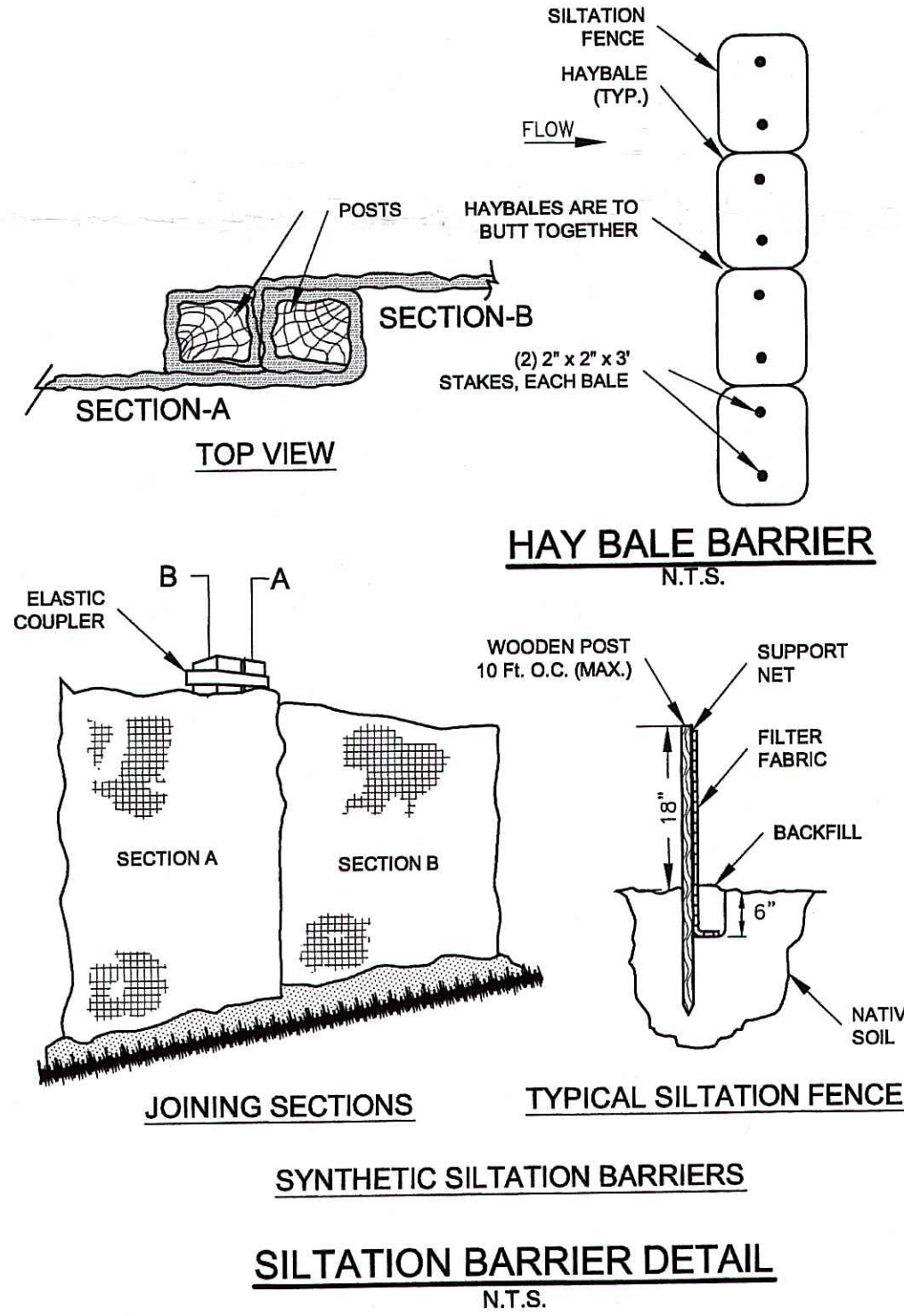
LEGEND:

- LIMIT OF 200' RIVERBANK WETLAND BUFFER
- - - WETLAND LINE FLAGGED ON 10-15-09
- WETLAND FLAG (TYP.)
- EDGE OF STREAM
- LIMIT OF WORK
- - - PROPOSED SILTATION FENCE

PLANTING AREAS

A	B	C		
29	9	16	★	JUNIPERUS VIRGINIANA (EASTERN RED CEDAR) (5' IN HEIGHT (MIN.) PLANTED @ O.C.)
21	6	12	★	HAMAMELLS VIRGINIANA (WITCH HAZEL) (3' IN HEIGHT (MIN.) PLANTED IN GROUPS OF 3 - 6' APART)
21	6	12	★	VIBURNUM DENTATUM (ARROW WOOD) (3' IN HEIGHT (MIN.) PLANTED IN GROUPS OF 3 - 6' APART)

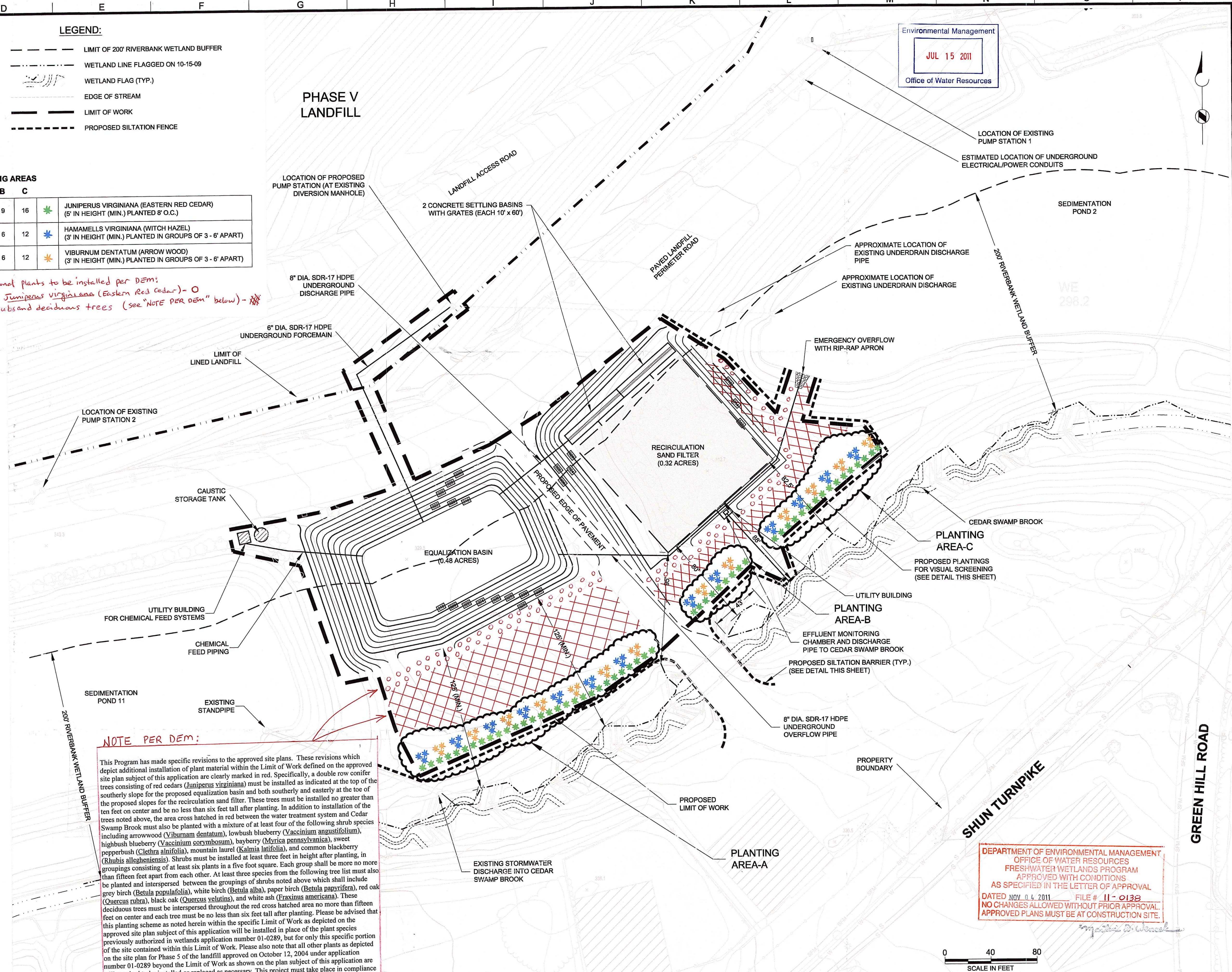
Additional plants to be installed per DEM:
 • 84 Juniperus virginiana (Eastern Red Cedar) - O
 • Shrubs and deciduous trees (see "NOTE PER DEM" below) - O



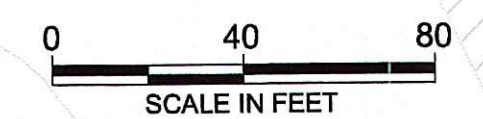
NOTE PER DEM:

This Program has made specific revisions to the approved site plans. These revisions which depict additional installation of plant material within the Limit of Work defined on the approved site plan subject of this application are clearly marked in red. Specifically, a double row conifer trees consisting of red cedars (*Juniperus virginiana*) must be installed as indicated at the top of the southerly slope for the proposed equalization basin and both southerly and easterly at the toe of the proposed slopes for the recirculation sand filter. These trees must be installed no greater than ten feet on center and be no less than six feet tall after planting. In addition to installation of the trees noted above, the area cross hatched in red between the water treatment system and Cedar Swamp Brook must also be planted with a mixture of at least four of the following shrub species including arrowwood (*Viburnum dentatum*), lowbush blueberry (*Vaccinium angustifolium*), highbush blueberry (*Vaccinium corymbosum*), bayberry (*Myrica pennsylvanica*), sweet pepperbush (*Clethra alnifolia*), mountain laurel (*Kalmia latifolia*), and common blackberry (*Rubus allegheniensis*). Shrubs must be installed at least three feet in height after planting, in groupings consisting of at least six plants in a five foot square. Each group shall be more no more than fifteen feet apart from each other. At least three species from the following tree list must also be planted and interspersed between the groupings of shrubs noted above which shall include grey birch (*Betula populifolia*), white birch (*Betula alba*), paper birch (*Betula papyrifera*), red oak (*Quercus rubra*), black oak (*Quercus sp.*), and white ash (*Fraxinus americana*). These deciduous trees must be interspersed throughout the red cross hatched area no more than fifteen feet on center and each tree must be no less than six feet tall after planting. Please be advised that this planting scheme as noted herein within the specific Limit of Work as depicted on the approved site plan subject of this application will be installed in place of the plant species previously authorized in wetlands application number 01-0289, but for only this specific portion of the site contained within this Limit of Work. Please also note that all other plants as depicted on the site plan for Phase 5 of the landfill approved on October 12, 2004 under application number 01-0289 beyond the Limit of Work as shown on the plan subject of this application are still required to be installed or replaced as necessary. This project must take place in compliance with these revisions.

Environmental Management
 JUL 15 2011
 Office of Water Resources



DEPARTMENT OF ENVIRONMENTAL MANAGEMENT
 OFFICE OF WATER RESOURCES
 FRESHWATER WETLANDS PROGRAM
 APPROVED WITH CONDITIONS
 AS SPECIFIED IN THE LETTER OF APPROVAL
 DATED NOV. 04, 2011 FILE # 11-0138
 NO CHANGES ALLOWED WITHOUT PRIOR APPROVAL.
 APPROVED PLANS MUST BE AT CONSTRUCTION SITE.



BROWN AND CALDWELL
 MIDDLEBOROUGH, MASSACHUSETTS

SUBMITTED: _____ DATE: _____
 PROJECT MANAGER
 APPROVED: _____ DATE: _____
 BROWN AND CALDWELL

LINE IS 2 INCHES
 AT FULL SIZE
 (IF NOT 2" - SCALE ACCORDINGLY)
 DATE: MAY 2011
 SCALE: 1" = 40'
 DESIGNED: W.C.G.
 DRAWN: R.J.F.
 CHECKED: W.C.G.
 APPROVED: A.R.K.

EXTERNAL REFERENCES
 Ec_Topo.dwg
 master_baseplan.dwg
 IMAGE REFERENCES
 RIDOT_Sid_Details_50.2.0.dwg

ALAN R. KIRSCHNER
 REGISTERED PROFESSIONAL ENGINEER
 No. 5099
 6-3-11

ZONE	REV.	DESCRIPTION	BY	DATE	APP.

PREPARED FOR:
 RHODE ISLAND RESOURCE RECOVERY CORPORATION
 JOHNSTON, R.I.

SITE PLAN & SYSTEM LAYOUT
 REQUEST FOR PRELIMINARY DETERMINATION
 ASSESSOR'S PLAT 43, LOT 567
 CENTRAL LANDFILL
 65 SHUN PIKE, JOHNSTON, RHODE ISLAND

FILENAME
 138450-C-1002_5-16-11.dwg
 BC PROJECT NUMBER
 138356
 CLIENT PROJECT NUMBER
 DRAWING NUMBER
 2
 SHEET NUMBER
 2 OF 2

May 16, 2011 - 3:16pm
 P:\RRC\CAD\Drawings\Civil\138450-C-1002_5-16-11.dwg