

PEDESTRIAN WALK WIDENING

SCALE: 1/4" = 1'-0"

NOTES:

- 1. TIMBER SHALL BE SOUTHER YELLOW PINE NO. 1 (S45) TREATED WITH ACQ .60.

Environmental Management
 FEB 28 2012
 Office of Water Resources

LAYOUT
 PLAN

Scale: 1/4" = 1'-0"

DEPARTMENT OF ENVIRONMENTAL MANAGEMENT
 OFFICE OF WATER RESOURCES
 FRESHWATER WETLANDS PROGRAM
 APPROVED WITH CONDITIONS
 AS SPECIFIED IN THE LETTER OF APPROVAL
 DATED MAR 12 2012 FILE # 11-0149
 NO CHANGES ALLOWED WITHOUT PRIOR APPROVAL
 APPROVED PLANS MUST BE AT CONSTRUCTION SITE

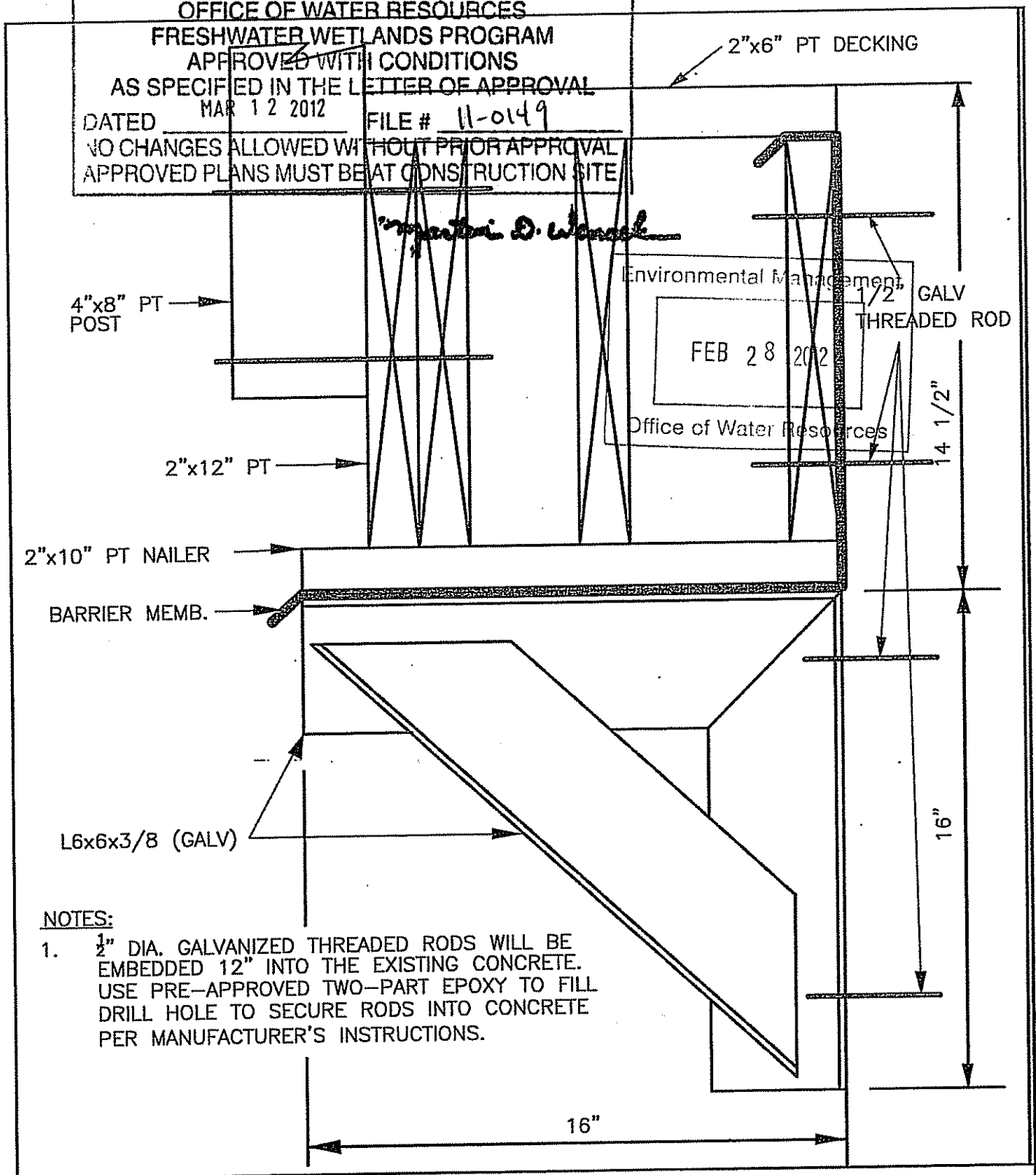
Material: Timber: SYP No. 1 ACQ .60 HARDWARE: GALVANIZED	TOWN OF SOUTH KINGSTOWN Engineering, 509 Commodore Perry Hwy Wakefield, RI 02879
	Dugway Bridge Replacement Dugway Road, South Kingstown, RI
PEDESTRIAN WALK WIDENING	
	Sheet No. 1 of 1

Signature

DEPARTMENT OF ENVIRONMENTAL MANAGEMENT
 OFFICE OF WATER RESOURCES
 FRESHWATER WETLANDS PROGRAM
 APPROVED WITH CONDITIONS
 AS SPECIFIED IN THE LETTER OF APPROVAL
 DATED MAR 12 2012 FILE # 11-0149
 NO CHANGES ALLOWED WITHOUT PRIOR APPROVAL
 APPROVED PLANS MUST BE AT CONSTRUCTION SITE

Myra D. Warrick

Environmental Management
 FEB 28 2012
 Office of Water Resources



NOTES:

1. 1/2" DIA. GALVANIZED THREADED RODS WILL BE EMBEDDED 12" INTO THE EXISTING CONCRETE. USE PRE-APPROVED TWO-PART EPOXY TO FILL DRILL HOLE TO SECURE RODS INTO CONCRETE PER MANUFACTURER'S INSTRUCTIONS.

TOWN OF SOUTH KINGSTOWN DEPARTMENT OF PUBLIC SERVICES

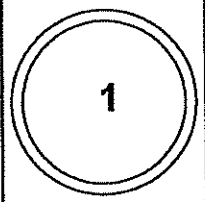
REVISIONS		
NO.	BY	DATE

DUGWAY BRIDGE APPROACH WIDENING

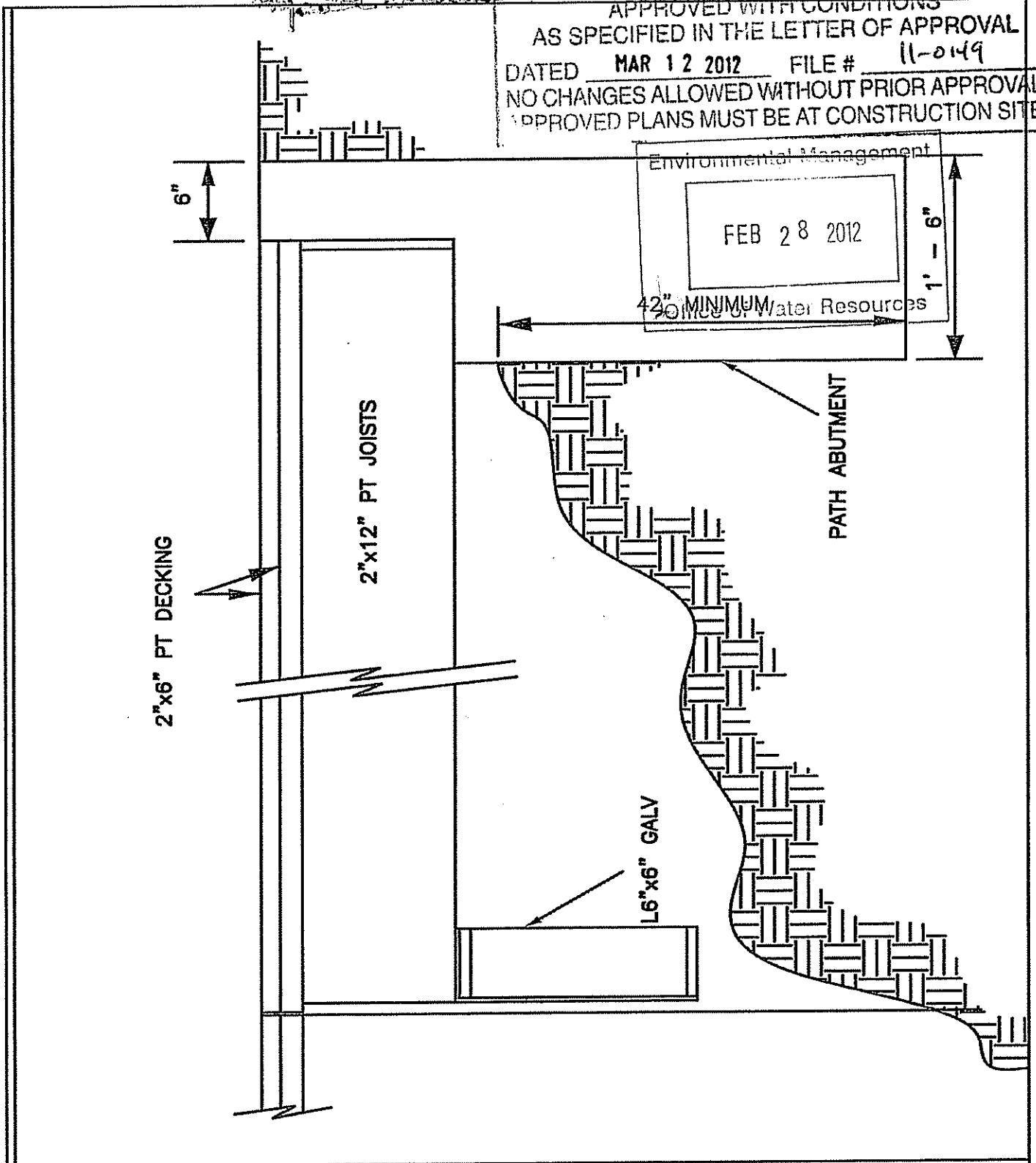
NOT TO SCALE

TOWN ENGINEER _____

DATE _____



DEPARTMENT OF ENVIRONMENTAL MANAGEMENT
 OFFICE OF WATER RESOURCES
 FRESHWATER WETLANDS PROGRAM
 APPROVED WITH CONDITIONS
 AS SPECIFIED IN THE LETTER OF APPROVAL
 DATED MAR 12 2012 FILE # 11-0149
 NO CHANGES ALLOWED WITHOUT PRIOR APPROVAL
 APPROVED PLANS MUST BE AT CONSTRUCTION SITE



TOWN OF SOUTH KINGSTOWN DEPARTMENT OF PUBLIC SERVICES

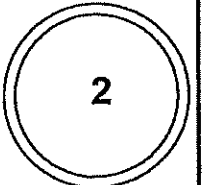
REVISIONS		
NO.	BY	DATE

DUGWAY BRIDGE APPROACH WIDENING

NOT TO SCALE

TOWN ENGINEER _____

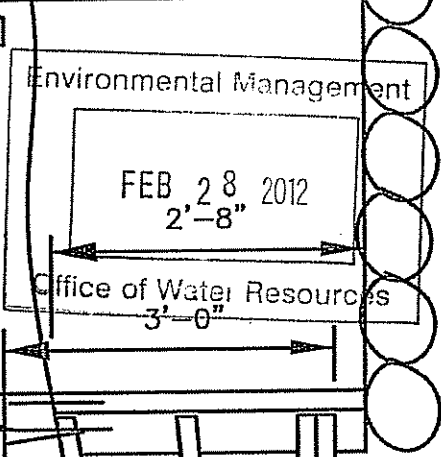
DATE _____



Matthew D. Wenzel

DEPARTMENT OF ENVIRONMENTAL MANAGEMENT
 OFFICE OF WATER RESOURCES
 FRESHWATER WETLANDS PROGRAM
 APPROVED WITH CONDITIONS
 AS SPECIFIED IN THE LETTER OF APPROVAL
 DATED MAR 12 2012 FILE # 11-049
 ANY CHANGES ALLOWED WITHOUT PRIOR APPROVAL
 APPROVED PLANS MUST BE AT CONSTRUCTION SITE

FOUR #4 REBAR 2'-0"
 DRILL 1'-0" AND GROUT



BLOCK AT 2'-0"

EXISTING APPROACH SLAB

1/2" GALV STAGGERED
 THREADED RODS @ 1'-9"

2"x12" PT JOISTS

L6x6x3/8 (GALV)

BRIDGE DECK

14"
 SAFETY WALK

TOWN OF SOUTH KINGSTOWN DEPARTMENT OF PUBLIC SERVICES

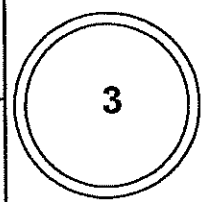
REVISIONS		
NO.	BY	DATE

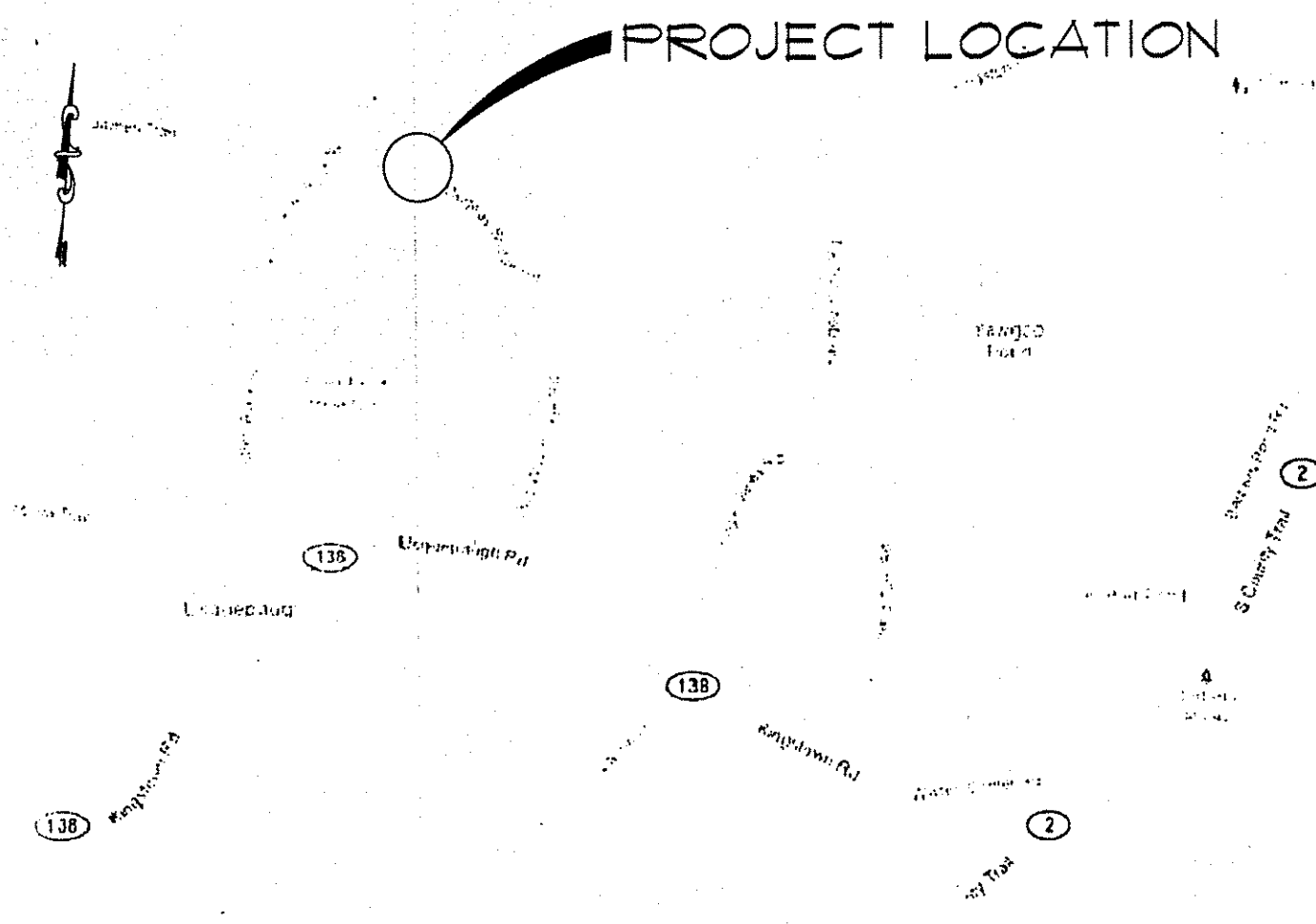
DUGWAY BRIDGE APPROACH WIDENING

NOT TO SCALE

TOWN ENGINEER

DATE



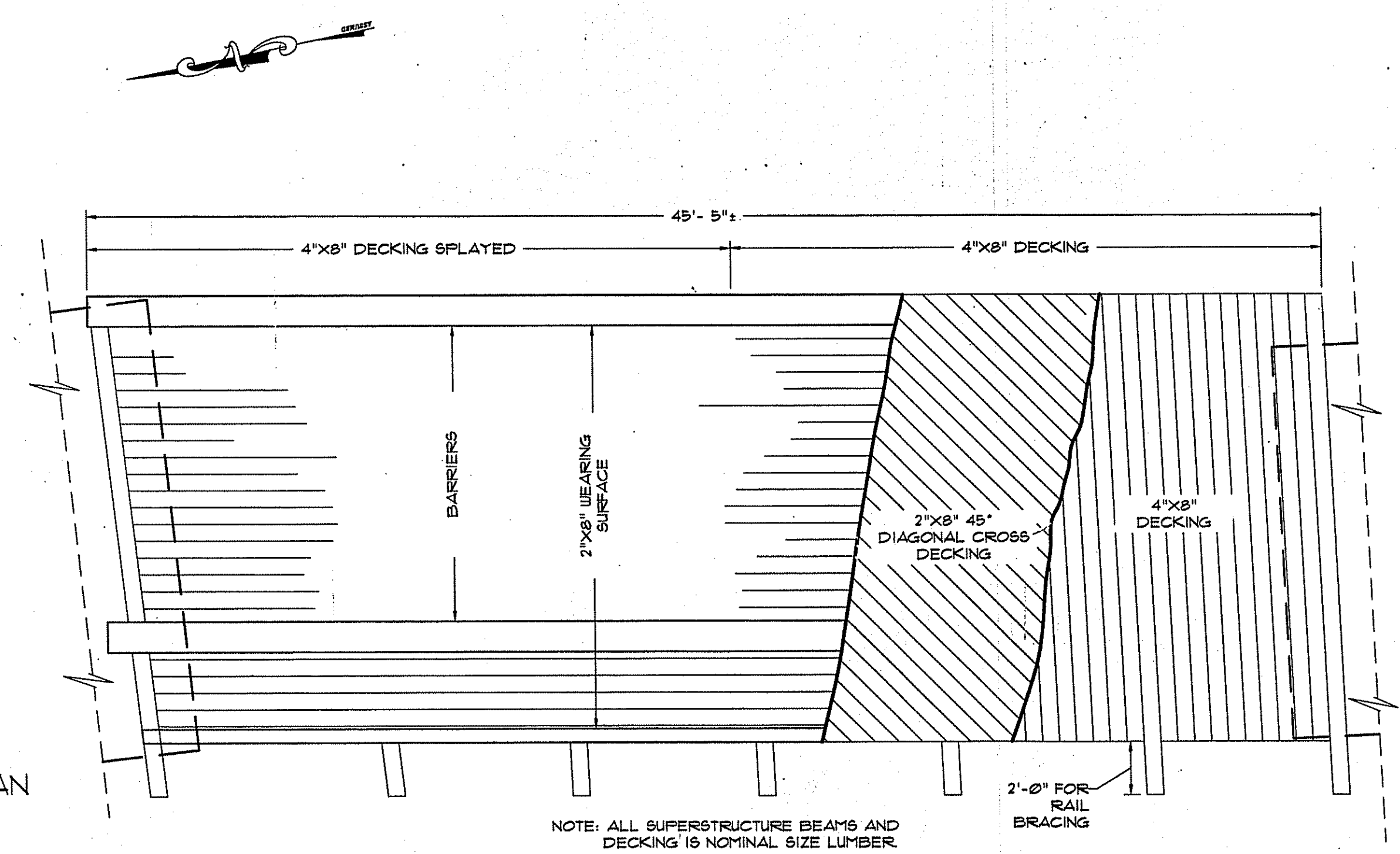


LOCUS MAP

NOTE:
ALL FRAMING MEMBERS & DECKING, INCLUDING PEDESTRIAN RAILING TO BE 1500 PSI SOUTHERN YELLOW PINE. UNLESS OTHERWISE NOTED.

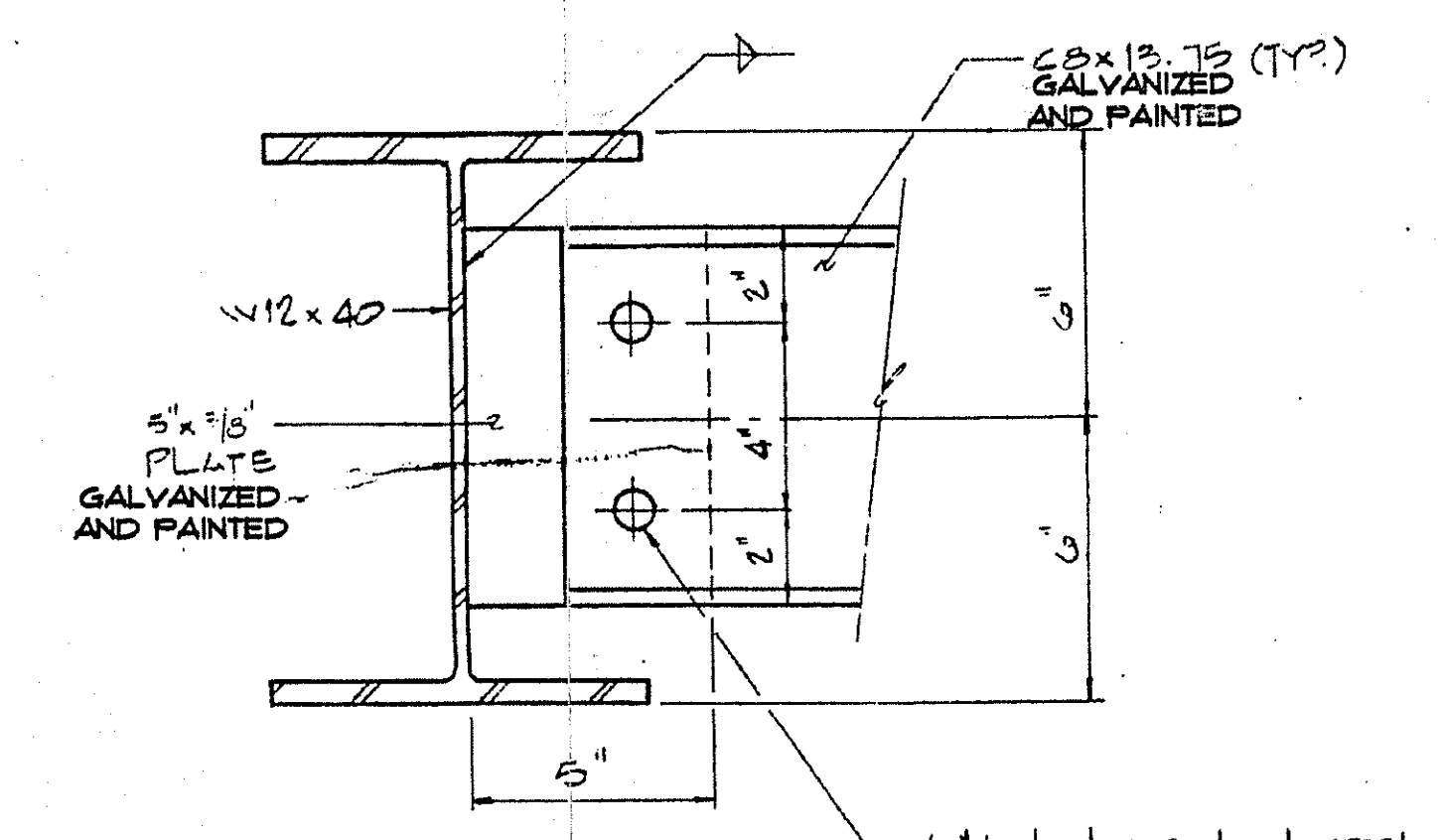
ALL FRAMING MEMBERS TO BE ROUGH SAWN S2S CCA SOLUTION TREATED TO PROVIDE A MINIMUM RETENTION UP TO 2.5 PCF. DECK PLANKING & PEDESTRIAN RAILING ARE TO BE ROUGH SAWN S4S TREATED WITH CCA SOLUTION TO PROVIDE MINIMUM 0.6 PCF. UNLESS OTHERWISE NOTED.

ALL HARDWARE & FASTENERS SHALL BE GALVANIZED.



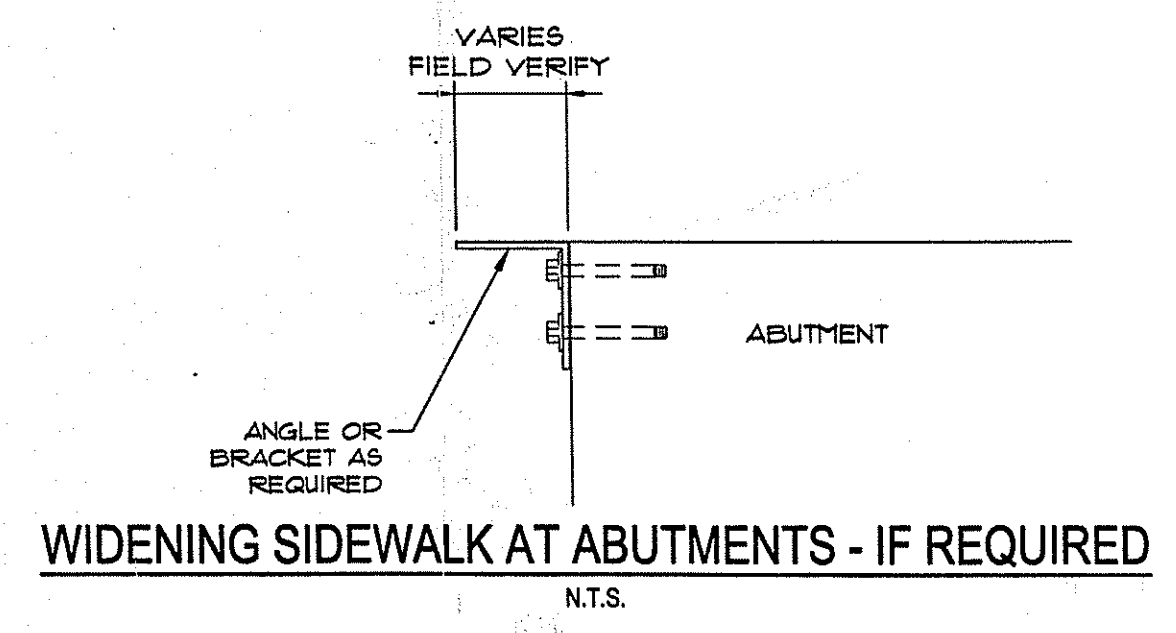
NOTE: ALL SUPERSTRUCTURE BEAMS AND DECKING IS NOMINAL SIZE LUMBER.

WOOD FRAMING PLAN
N.T.S.

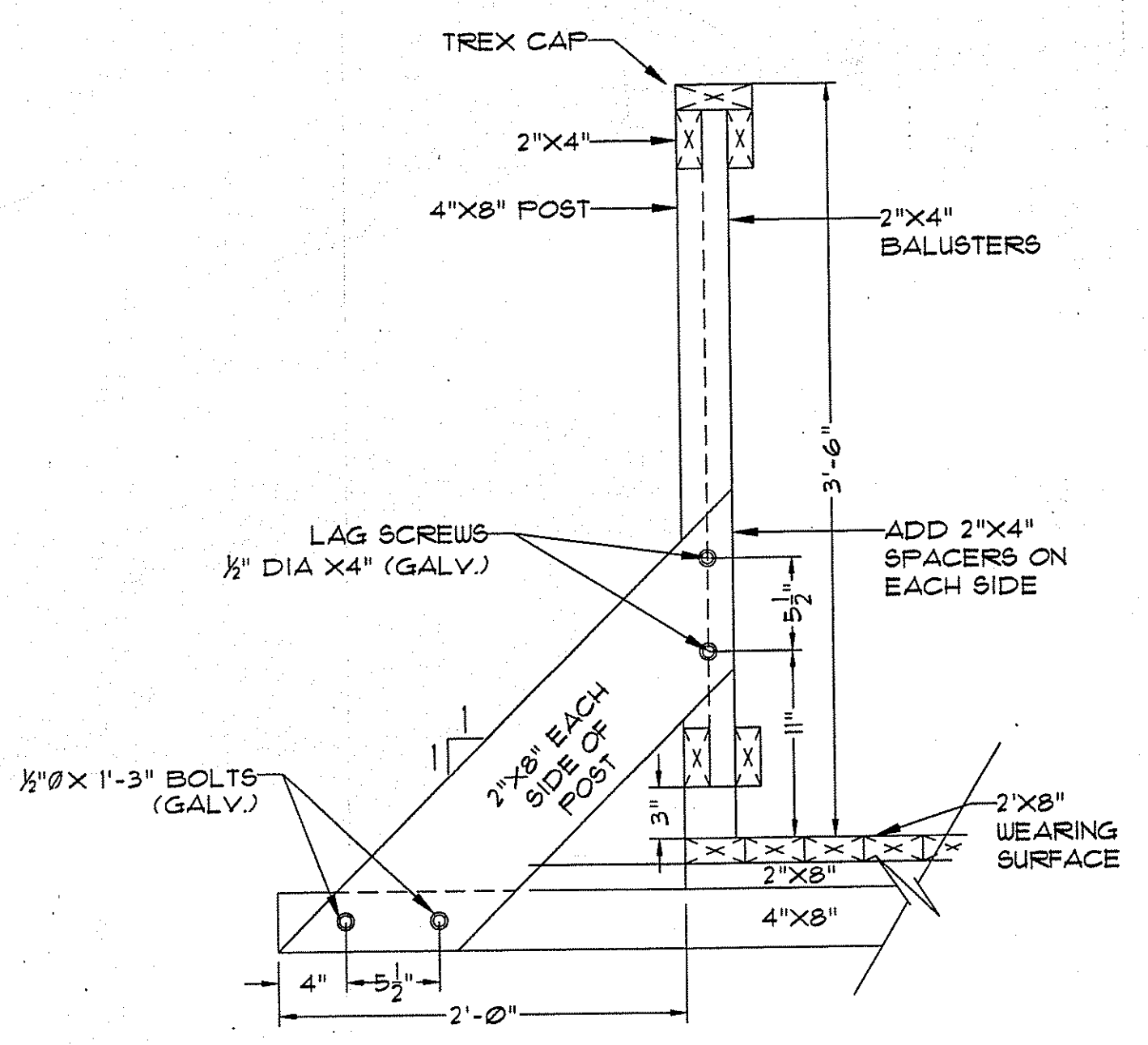


DIAPHRAGM DETAIL
N.T.S.

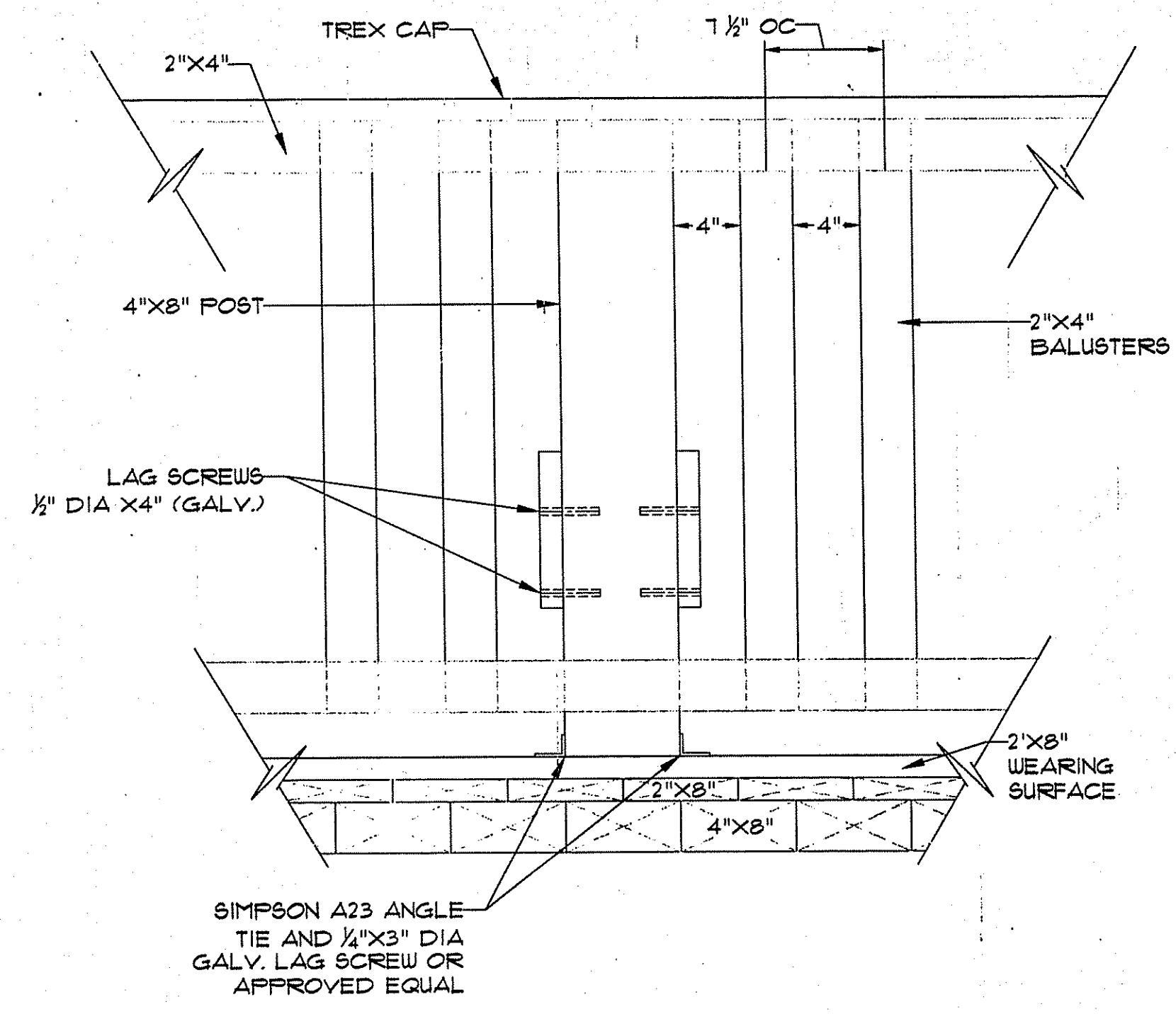
3/4" HIGH STRENGTH STEEL BOLTS, 13/16" HOLES IN DIAPHRAGMS, 1" HOLES IN CONNECTION PLATE



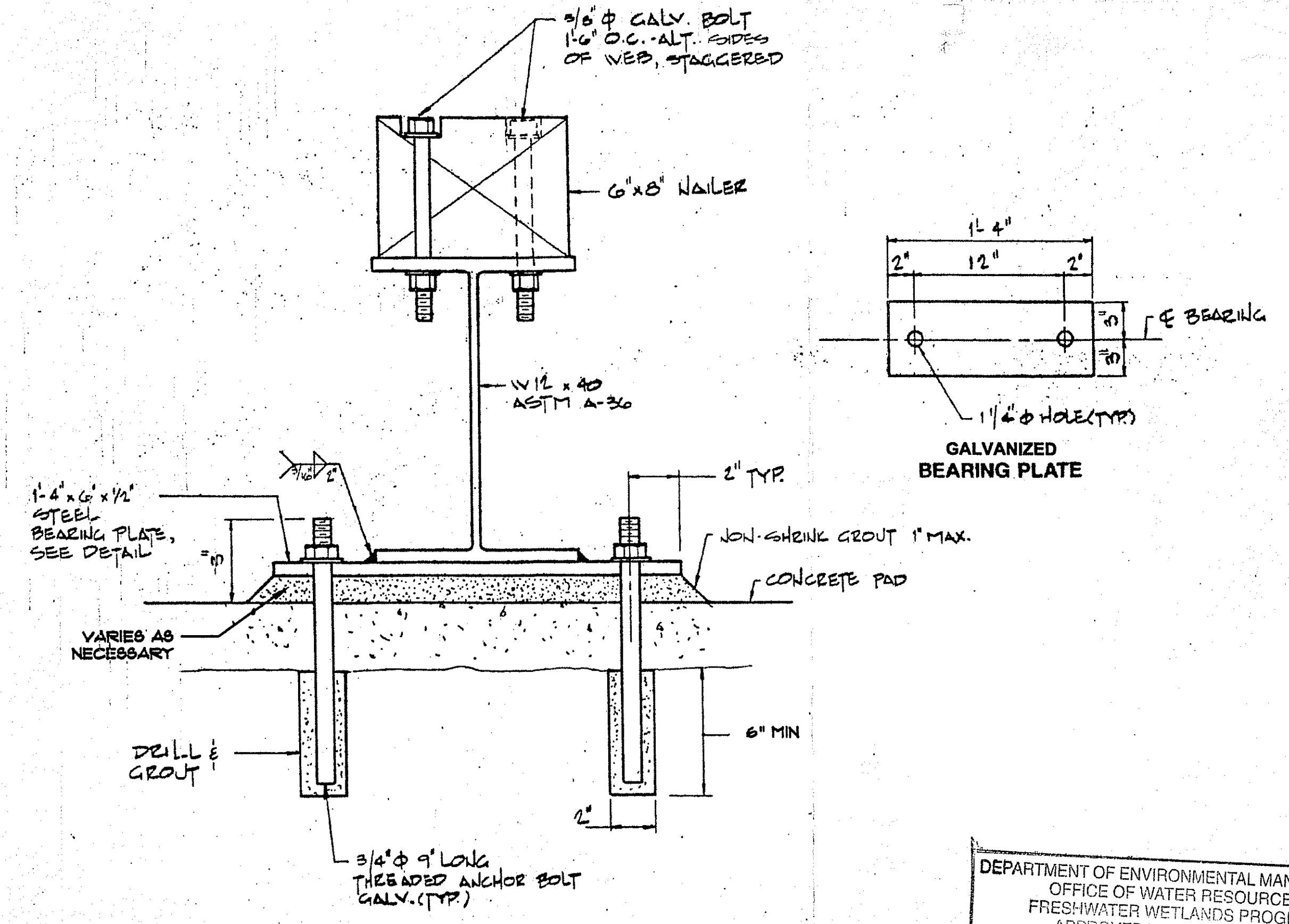
WIDENING SIDEWALK AT ABUTMENTS - IF REQUIRED
N.T.S.



RAILING CONNECTION
N.T.S.



RAILING CONNECTION ELEVATION
N.T.S.



NAILER & BEARING PLATE CONNECTIONS
N.T.S.

DEPARTMENT OF ENVIRONMENTAL MANAGEMENT
OFFICE OF WATER RESOURCES
FRESHWATER WETLANDS PROGRAM
APPROVED WITH CONDITIONS
AS SPECIFIED IN THE LETTER OF APPROVAL
DATED SEP 19 2011. FILE # 11-0149
NO CHANGES ALLOWED WITHOUT PRIOR APPROVAL.
APPROVED PLANS MUST BE AT CONSTRUCTION SITE.

NO.	REVISION DESCRIPTION	DRN BY:	CHK BY:	DATE

Resource Controls
Proven Environmental & Engineering Solutions
474 Broadway, Pawtucket, RI 02860, 401-725-6800
378 Pope Street, Unit 10, Stoughton, MA 01922, 781-970-5374
www.ResourceControls.com

PREPARED FOR:
**TOWN OF SOUTH KINGSTON
RHODE ISLAND**

LASZLO & SEGUND
REGISTERED PROFESSIONAL ENGINEER
No. 0204

SHEET TITLE:
**SITE PLAN, FRAMING PLAN AND
ABUTMENT PLANS & ELEVATIONS**
DUGWAY BRIDGE REPLACEMENT
PROJECT

PROJECT NO: 7036	DESIGNED BY: DRP	CHECKED BY: LSS	DATE: JUNE 2011	SCALE: AS SHOWN
DRAWN BY: DRP	CHECKED BY: LSS	DATE: JUNE 2011	SCALE: AS SHOWN	