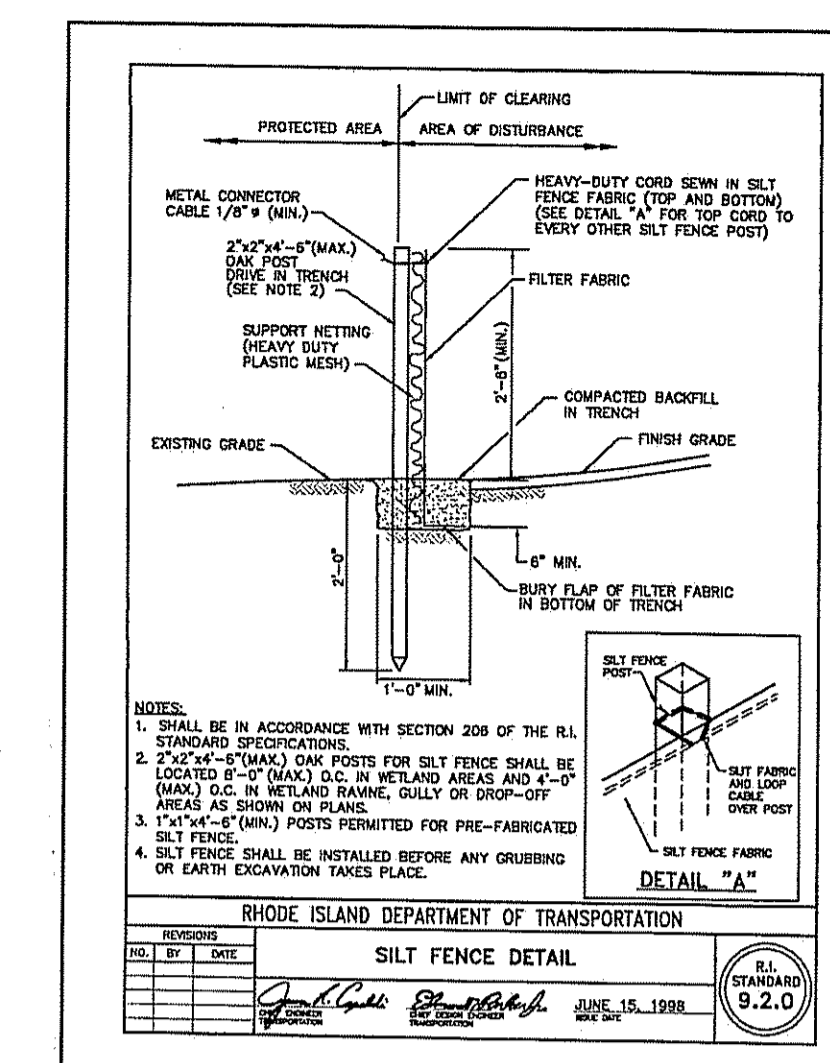
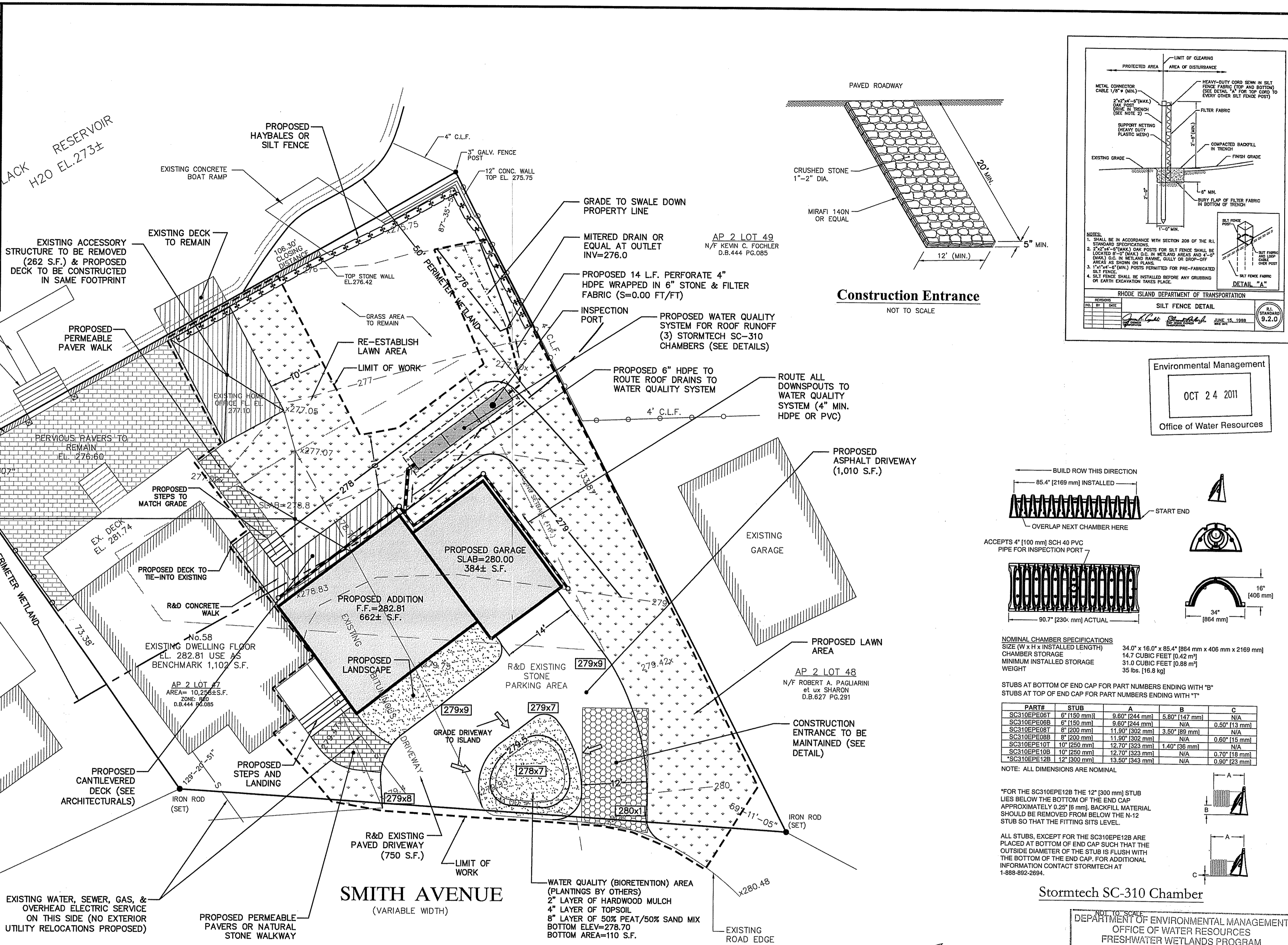
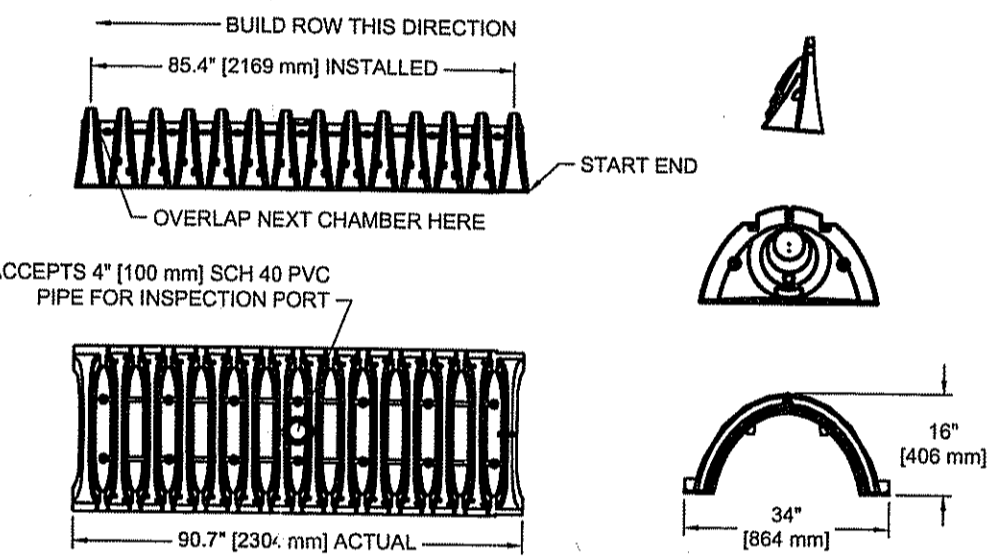
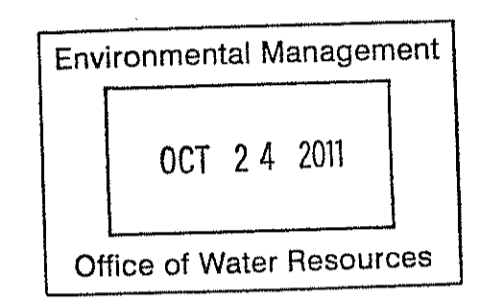




Locus Map 1"=61' 0"



Construction Entrance NOT TO SCALE



NOMINAL CHAMBER SPECIFICATIONS

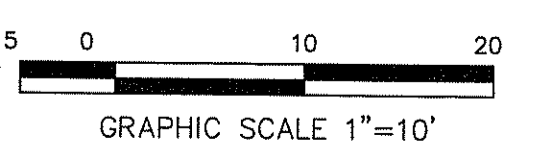
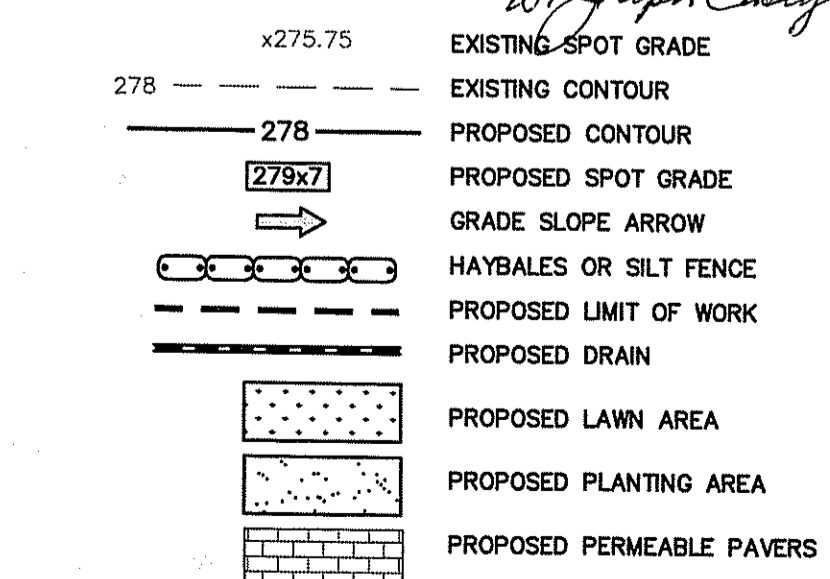
SIZE (W x H x INSTALLED LENGTH)	34" x 16" x 85.4" (864 mm x 406 mm x 2169 mm)
CHAMBER STORAGE	31.0 CUBIC FEET [0.88 m³]
MINIMUM INSTALLED STORAGE	35 lbs. [16.8 kg]

STUBS AT BOTTOM OF END CAP FOR PART NUMBERS ENDING WITH "9" STUBS AT TOP OF END CAP FOR PART NUMBERS ENDING WITH "1"

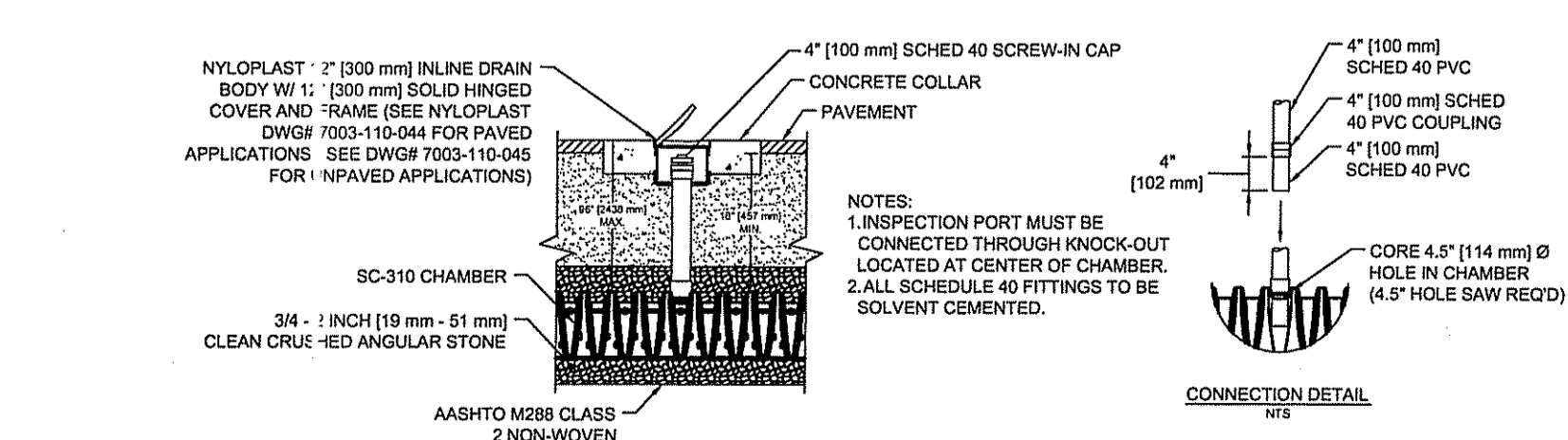
PART#	STUB	A	B	C
SC310EPE06T	6" (152 mm)	9.60" (244 mm)	5.80" (147 mm)	N/A
SC310EPE06B	6" (152 mm)	9.60" (244 mm)	N/A	0.50" (13 mm)
SC310EPE08T	8" (203 mm)	11.90" (302 mm)	3.50" (89 mm)	N/A
SC310EPE08B	8" (203 mm)	11.90" (302 mm)	N/A	0.50" (13 mm)
SC310EPE10T	10" (254 mm)	12.70" (323 mm)	1.40" (36 mm)	N/A
SC310EPE10B	10" (254 mm)	12.70" (323 mm)	N/A	0.70" (18 mm)
SC310EPE12B	12" (305 mm)	13.50" (343 mm)	N/A	0.90" (23 mm)

Stormtech SC-310 Chamber

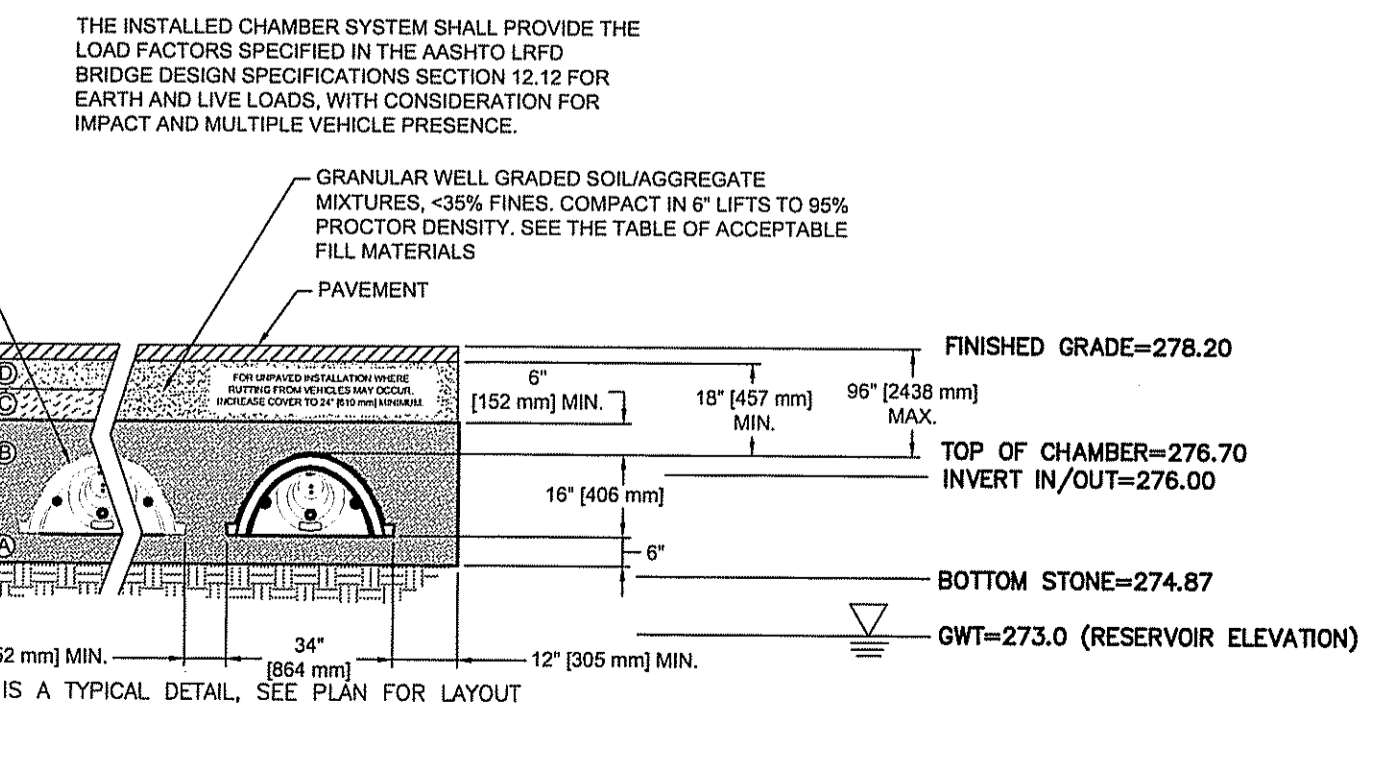
DEPARTMENT OF ENVIRONMENTAL MANAGEMENT
OFFICE OF WATER RESOURCES
FRESHWATER WETLANDS PROGRAM
APPROVED WITH CONDITIONS
AS SPECIFIED IN THE LETTER OF APPROVAL
DATED NOV 23 2011 FILE # 11-0901
NO CHANGES ALLOWED WITHOUT PRIOR APPROVAL
APPROVED PLANS MUST BE AT CONSTRUCTION SITE



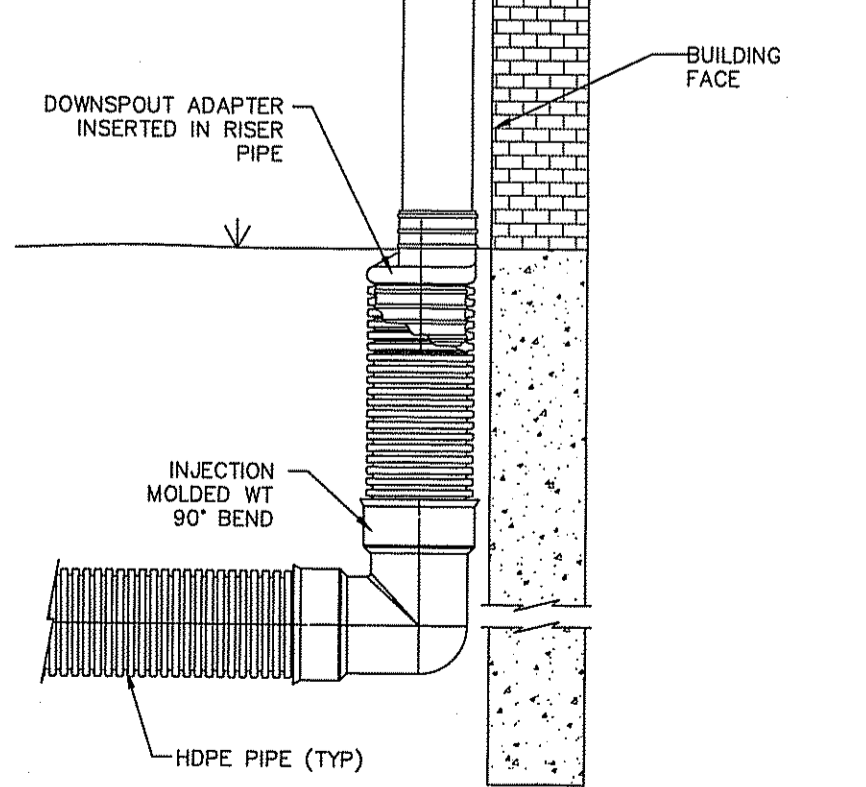
Kindly be advised that this Permit is not equivalent to a verification of the type or extent of freshwater wetlands on site.



SC-310 Inspection Port NOT TO SCALE



Stormtech SC-310 Cross Section NOT TO SCALE



Downspout Connection To Roof Drain NOT TO SCALE

General Notes:

- THE SURVEY, EXISTING CONDITIONS, AND TOPOGRAPHY SHOWN ON THIS PLAN WAS PROVIDED BY N. VELTRI SURVEY, INC. AND CONFORMS TO A CLASS I STANDARD.
- THE CONTRACTOR SHALL NOTIFY DIG-SAFE 72 HOURS PRIOR TO START OF CONSTRUCTION.
- PROPER EROSION CONTROL MEASURES SHALL BE INSTALLED PRIOR TO EARTH DISTURBING ACTIVITIES. THIS SHALL INCLUDE SILT FENCE OR HAYBALES AT ALL DOWN GRADIENT AREAS, INLET PROTECTION OF CATCH BASINS, AND CONSTRUCTION ENTRANCE.
- THIS SITE IS SHOWN ON FEMA PANEL 44007C0281G, AS ZONE A, NO BASE FLOOD ELEVATION DETERMINED EFFECTIVE DATE MARCH 2, 2009.
- THIS SITE IS SERVICED BY PUBLIC SEWER, WATER, AND GAS.
- ALL CONSTRUCTION SHALL BE IN CONFORMANCE WITH TOWN OF SMITHFIELD RULES AND REGULATIONS.

Zoning Information
ZONE DESIGNATION R-20
MINIMUM LOT SIZE 20,000 S.F.
MINIMUM LOT WIDTH 125 FT.
MAX. LOT COVERAGE 25%
MAX. BLDG. HEIGHT 39 FT.

Building Setbacks
FRONT SETBACK 30'
REAR SETBACK 30'
SIDE SETBACK 15'

Existing Surface Cover
• IMPERVIOUS SURFACE 2,372 S.F.
• PERVIOUS PAVERS 930 S.F.
• LAWN/LANDSCAPE 6,956 S.F.
10,258 S.F.

Proposed Surface Cover
• IMPERVIOUS SURFACE 3,158 S.F.
• PERVIOUS PAVERS 1,100 S.F.
• LAWN/LANDSCAPE 6,000 S.F.
10,258 S.F.

Soils Disclaimer
• NO SOILS TESTING HAS BEEN PERFORMED OR PROVIDED TO ADVANCED CIVIL DESIGN, INC. (ACD) INDICATING SOIL TYPES AND GROUNDWATER ELEVATION. THE OWNER AND/OR CONTRACTOR IS MADE AWARE THAT ACD MADE REASONABLE ASSUMPTIONS FOR DESIGN OF STORMWATER MITIGATION SYSTEMS. THE CONTRACTOR SHALL INSTALL ALL GRADES AS SHOWN AND INTENDED. IF FIELD CONDITIONS WARRANT A CHANGE FROM THIS PLAN, THE TOWN AND ACD SHALL BE NOTIFIED IMMEDIATELY.

Professional Engineer Seal for CARLOS S. RUOTOLO, No. 8756, REGISTERED PROFESSIONAL ENGINEER (CIVIL).

Advanced Civil Design, Inc.
SITE/CIVIL ENGINEERS
7 COUNTRYSIDE LANE
SCITUATE, RI 02857
PH: (401) 644-8656

NO.	DATE	REVISION

PROJECT TITLE:
Proposed In-Law Addition To Single Family Dwelling
A.P. 2 LOT 47
58 SMITH AVENUE
SMITHFIELD, RI
OWNER/APPLICANT:
JOHN J. RYAN

DRAWING TITLE:
EROSION CONTROL, GRADING, & DRAINAGE PLAN & DETAILS

DATE: OCTOBER 5, 2011 DESIGNED BY: C.S.R.
SCALE: 1"=10' CHECKED BY: C.S.R.

RECEIVED stamp dated OCT 24 2011 and drawing number C-1 SHEET 1 OF 1.