

STATE OF RHODE ISLAND



DEPARTMENT OF TRANSPORTATION

PLAN OF PROPOSED

1R HIGHWAY IMPROVEMENTS

EDDIE DOWLING HIGHWAY (ROUTE 146A)

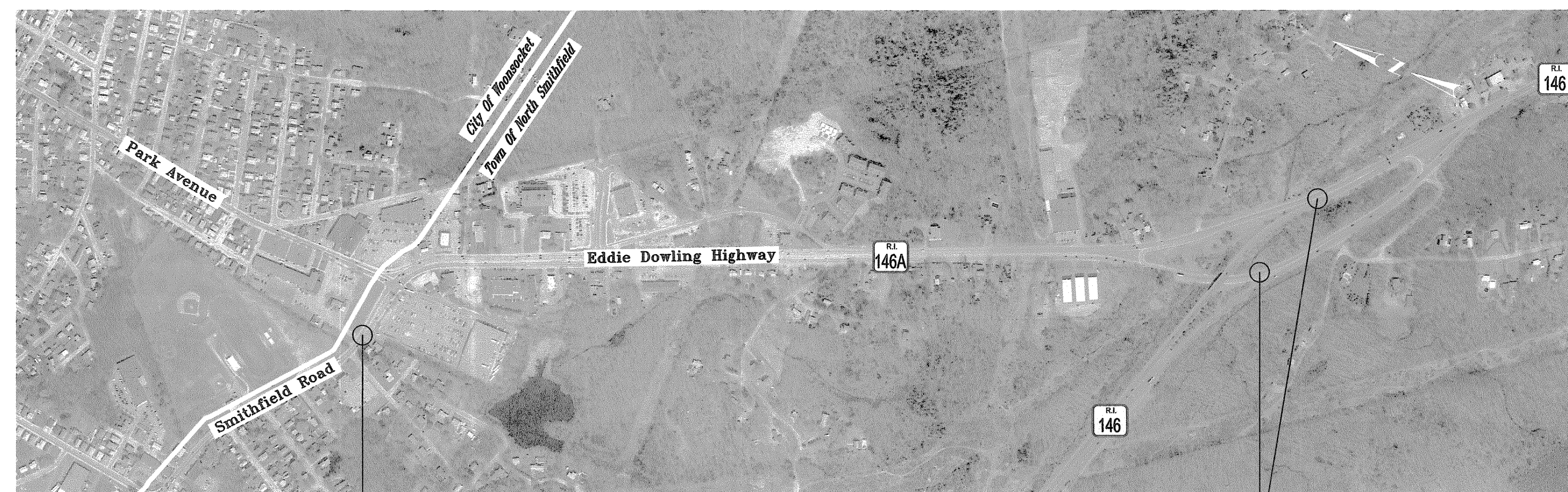
FROM EDDIE DOWLING HIGHWAY (ROUTE 146)
TO PARK AVENUE

NORTH SMITHFIELD, RHODE ISLAND
PROVIDENCE COUNTY

R.I. CONTRACT NO. 2011-CH-102 F.A. PROJECT NO. HPP-146A(001)

PAVEMENT STRUCTURE
REFER TO PAVEMENT CORES

1.25 MILES



Limit of Work
R.I. FAP No. HPP-146A(001)
R.I. CONTRACT No. 2011-CH-102
STA. 1+00

LAYOUT PLAN
SCALE: 1"=600'

Limit of Work
R.I. FAP No. HPP-146A(001)
R.I. CONTRACT No. 2011-CH-102
STA. 58+49 (SOUTHBOUND)
STA. 62+47 (NORTHBOUND)

SCALES OF DRAWINGS

PLANS 1 INCH = 20 FEET

BASE OF LEVELS
NGVD 29



PARE CORPORATION
ENGINEERS - SCIENTISTS - PLANNERS
8 BLACKSTONE VALLEY PLACE
LINCOLN, RI 02865
401-334-1100

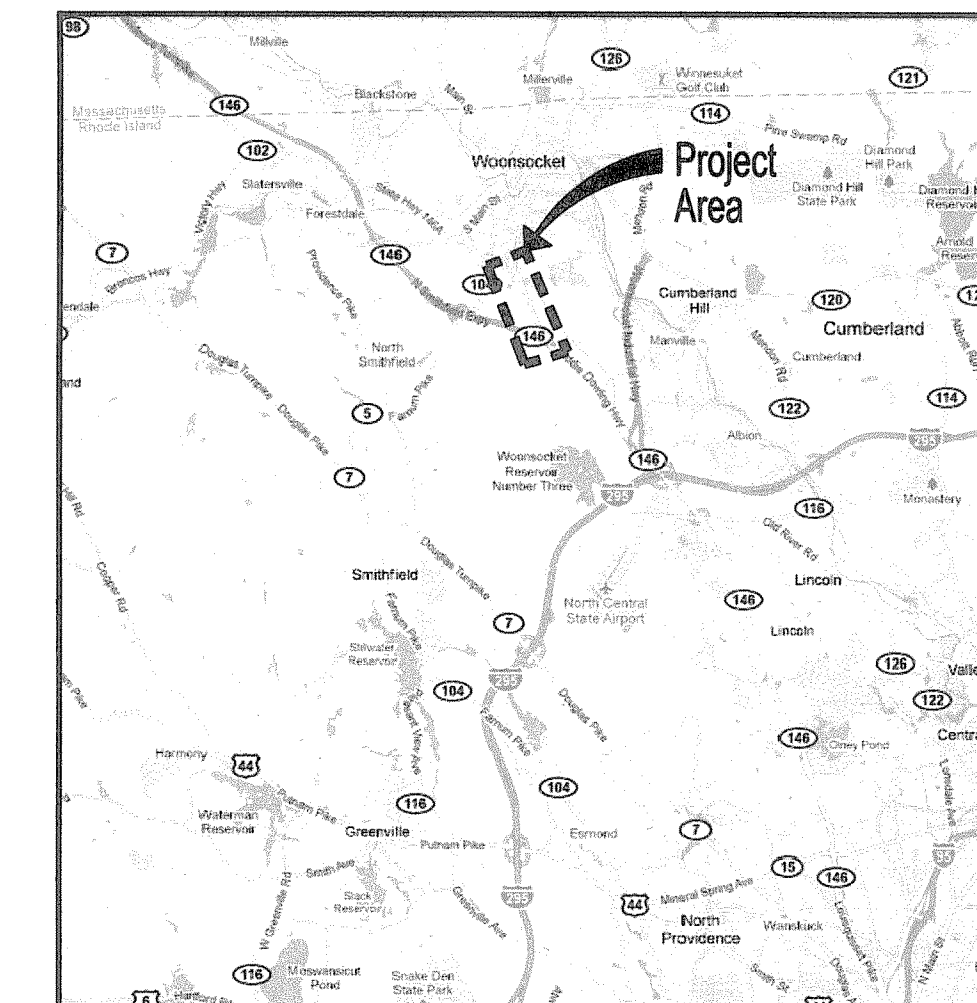
RIDEM Permit
Submission
December 2011

Contract Number 2011-CH-102

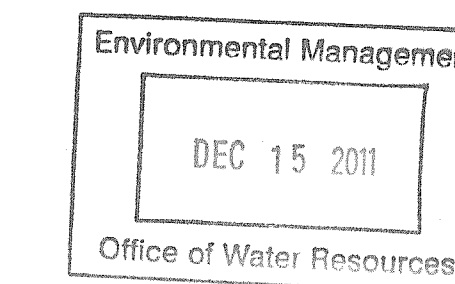
Number of Sheet 1

Total Sheets 20

FED. ROAD DIV. NO.	STATE	FEDERAL AID PROJECT NO.	FISCAL YEAR	SHEET NO.	TOTAL SHEETS
	RI	HPP-146A(001)	2011	1	20



LOCATION MAP
SCALE: N.T.S.



DESIGN	DESIGNATION
AADT (2011)	19,800 V.P.D.
AADT (2031)	23,500 V.P.D.
D	50/50
T	7%
DHV (2031)	2,350 V.P.H.
DESIGN SPEED	45 M.P.H.

EXISTING PAVEMENT STRUCTURE

3" SURFACE COURSE, TYPE I-1
7 3/4" CONCRETE BASE
12" GRAVEL BASE

PROPOSED PAVEMENT STRUCTURE

COLD PLANE 3" OF EXISTING PAVEMENT
CLEAN AND SEAL CRACKS AND OPEN JOINTS
OVERLAY 1" SUPERPAVE HMA - 9.5MM LEVELING COURSE
FOLLOWED BY 2" SUPERPAVE HMA - 12.5MM SURFACE COURSE
TACK COAT BETWEEN ASPHALT LAYERS

FRESHWATER WETLANDS PROGRAM
APPROVED WITH CONDITIONS
AS SPECIFIED IN THE LETTER OF APPROVAL
DATED JAN 30 2012 FILE # 11-0236
NO CHANGES ALLOWED WITHOUT PRIOR APPROVAL
APPROVED PLANS MUST BE AT THE OFFICE OF THE DIVISION ADMINISTRATOR



R.I. DEPARTMENT OF TRANSPORTATION

APPROVED _____ DATE _____

DEPUTY CHIEF ENGINEER _____ DATE _____

APPROVED _____

CHIEF ENGINEER _____ DATE _____

APPROVED _____

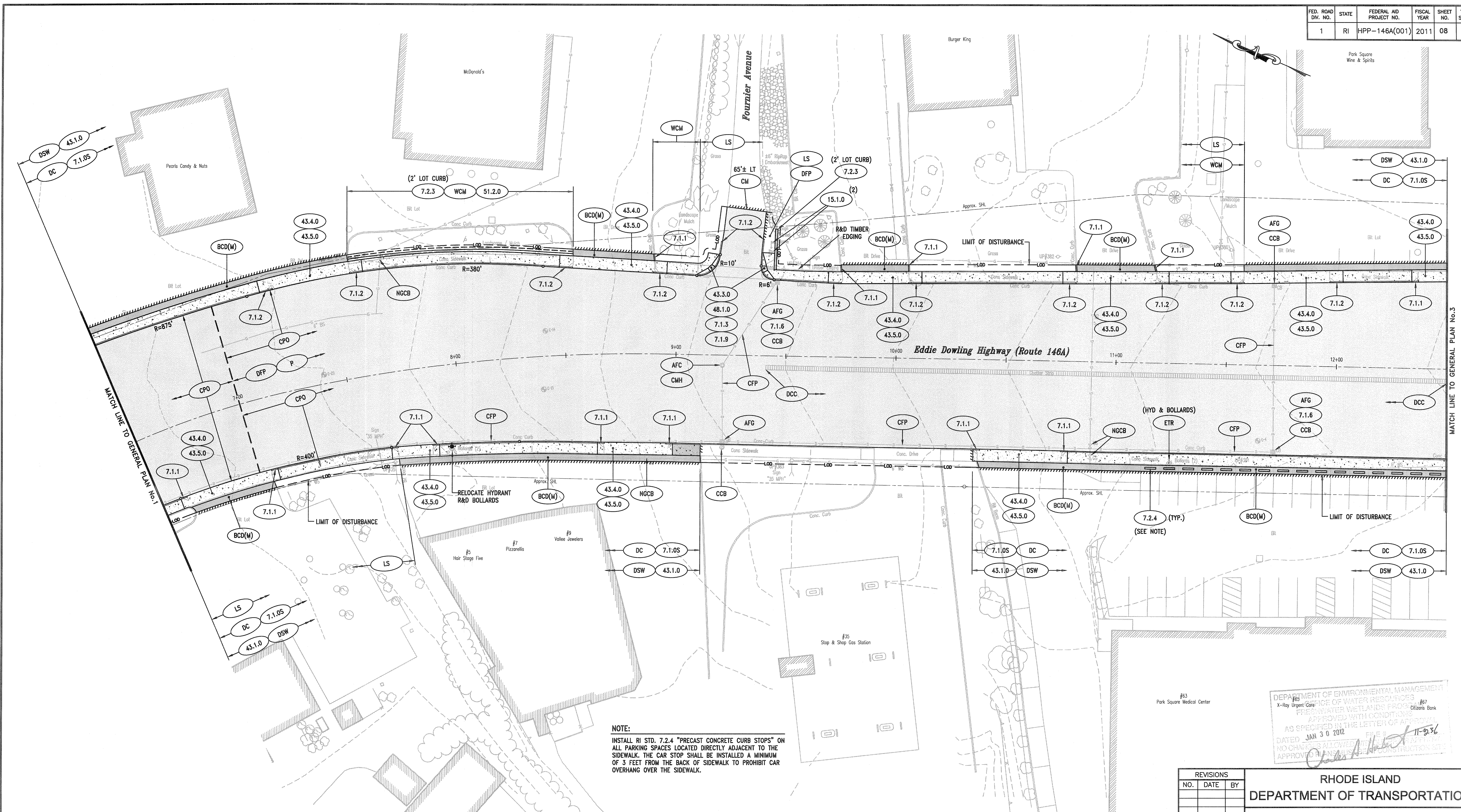
DIRECTOR _____ DATE _____

DEPARTMENT OF TRANSPORTATION
FEDERAL HIGHWAY ADMINISTRATION

APPROVED _____

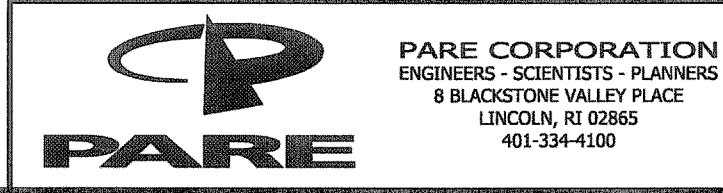
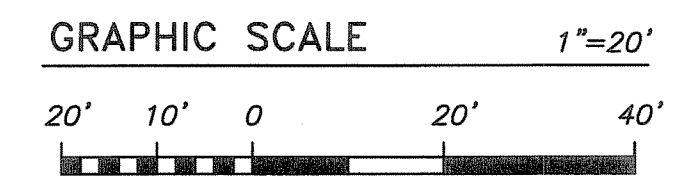
DIVISION ADMINISTRATOR _____ DATE _____

FED. ROAD DIV. NO.	STATE	FEDERAL AID PROJECT NO.	FISCAL YEAR	SHEET NO.	TOTAL SHEETS
1	RI	HPP-146A(001)	2011	08	20



NOTE:
 INSTALL RI STD. 7.2.4 "PRECAST CONCRETE CURB STOPS" ON ALL PARKING SPACES LOCATED DIRECTLY ADJACENT TO THE SIDEWALK. THE CAR STOP SHALL BE INSTALLED A MINIMUM OF 3 FEET FROM THE BACK OF SIDEWALK TO PROHIBIT CAR OVERHANG OVER THE SIDEWALK.

DEPARTMENT OF ENVIRONMENTAL MANAGEMENT
 #65 X-Ray Urgent Care
 #67 Citizens Bank
 #67 Citizens Bank
 APPROVED WITH CONDITIONS
 AS SPECIFIED IN THE LETTER OF APPROVAL
 DATED JAN 30 2012
 NO CHANGES ALLOWED WITHOUT THE APPROVAL OF THE APPROVED PLANS AND/OR CONSTRUCTION SITE



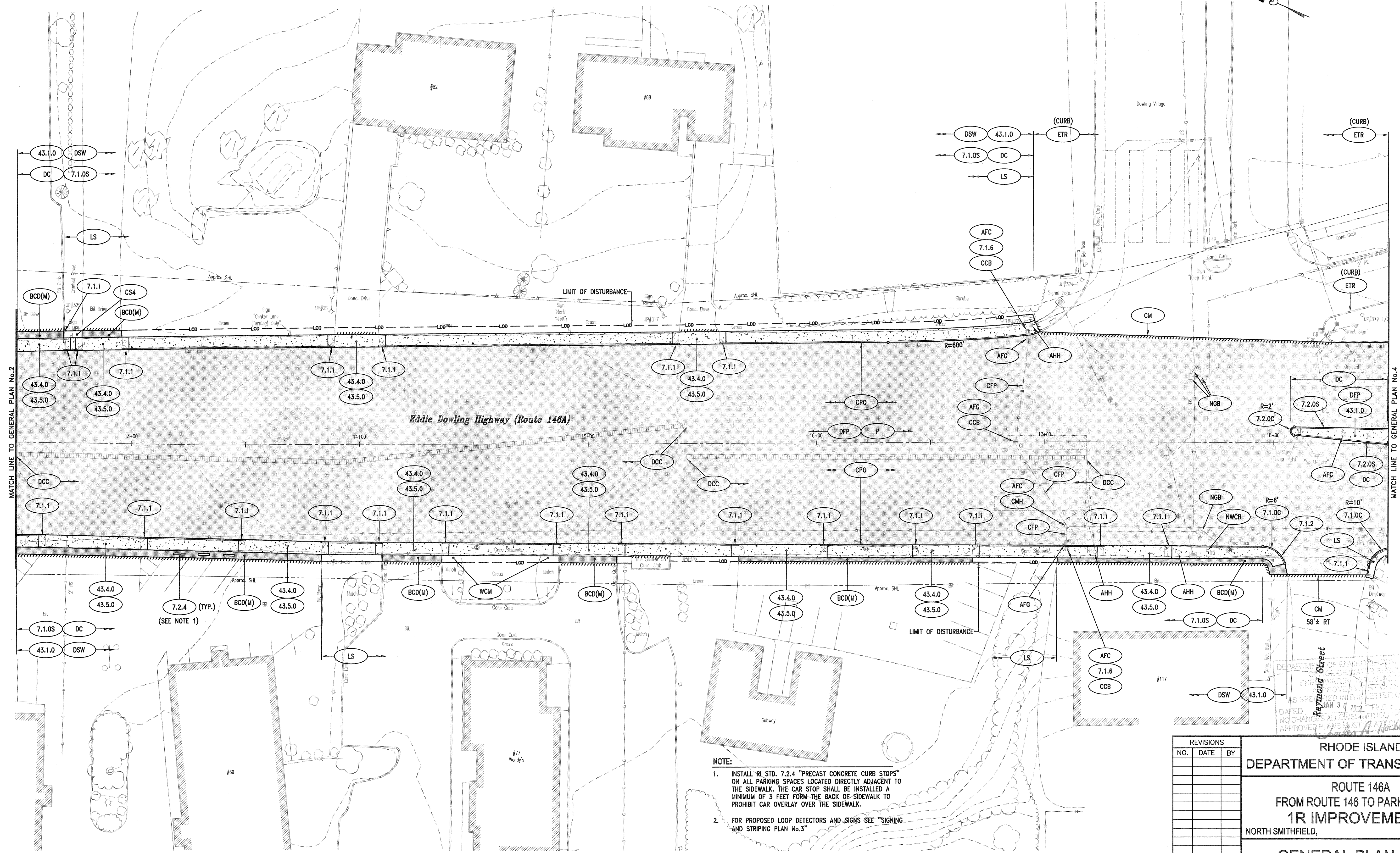
REVISIONS		
NO.	DATE	BY

RHODE ISLAND
 DEPARTMENT OF TRANSPORTATION

ROUTE 146A
 FROM ROUTE 146 TO PARK AVENUE
 1R IMPROVEMENTS
 NORTH SMITHFIELD, RHODE ISLAND

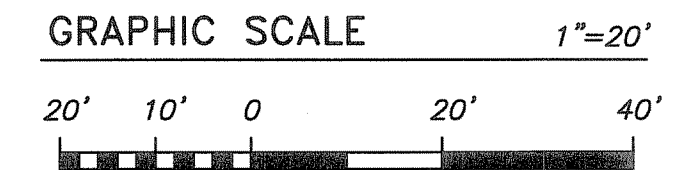
GENERAL PLAN No. 2
 STA. 6+50 TO STA. 12+50

CHECKED BY _____ DATE _____ SCALE 1"=20'



NOTE:

- INSTALL RI STD. 7.2.4 "PRECAST CONCRETE CURB STOPS" ON ALL PARKING SPACES LOCATED DIRECTLY ADJACENT TO THE SIDEWALK. THE CAR STOP SHALL BE INSTALLED A MINIMUM OF 3 FEET FROM THE BACK OF SIDEWALK TO PROHIBIT CAR OVERLAY OVER THE SIDEWALK.
- FOR PROPOSED LOOP DETECTORS AND SIGNS SEE "SIGNING AND STRIPING PLAN No.3"



PARE CORPORATION
 ENGINEERS - SCIENTISTS - PLANNERS
 8 BLACKSTONE VALLEY PLACE
 LINCOLN, RI 02865
 401-334-4100

REVISIONS		
NO.	DATE	BY

RHODE ISLAND
 DEPARTMENT OF TRANSPORTATION

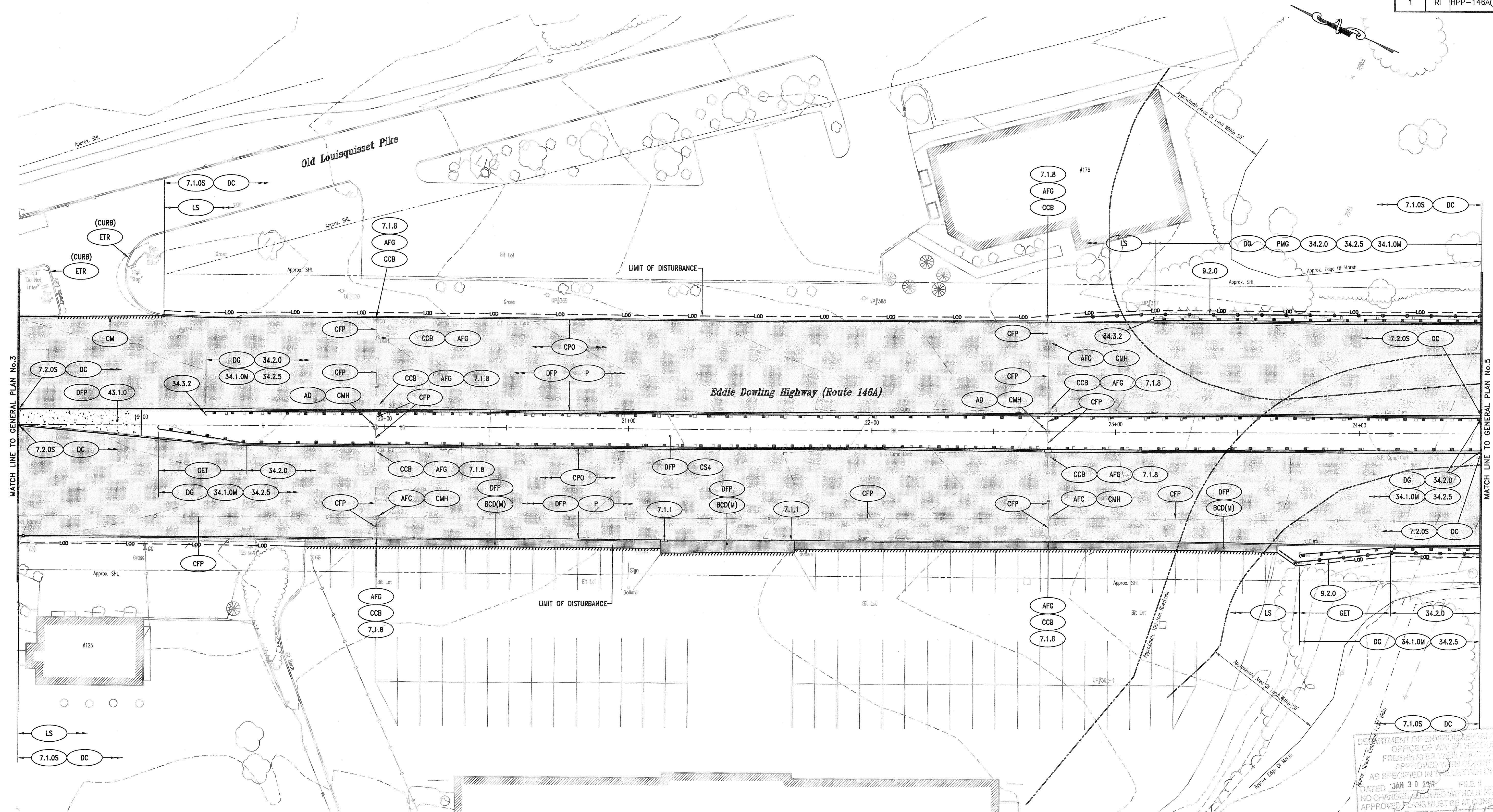
ROUTE 146A
 FROM ROUTE 146 TO PARK AVENUE
1R IMPROVEMENTS
 NORTH SMITHFIELD, RHODE ISLAND

GENERAL PLAN No. 3
 STA. 12+50 TO STA. 18+50

CHECKED BY _____ DATE _____ SCALE 1"=20'

DEPARTMENT OF ENVIRONMENTAL MANAGEMENT
 FROM WATER POLLUTION CONTROL DIVISION
 APPROVED IN THE LETTER OF APPROVAL
 AS SPECIFIED IN THE LETTER OF APPROVAL
 DATED JAN 30 2012 FILE # 11-0236
 NO CHANGES ALLOWED WITHOUT PERMISSION
 APPROVED _____

FED. ROAD DIV. NO.	STATE	FEDERAL AID PROJECT NO.	FISCAL YEAR	SHEET NO.	TOTAL SHEETS
1	RI	HPP-146A(001)	2011	10	20



MATCH LINE TO GENERAL PLAN No.3

MATCH LINE TO GENERAL PLAN No.5

DEPARTMENT OF ENVIRONMENTAL MANAGEMENT
 OFFICE OF WATER RESOURCES
 FRESHWATER WATER QUALITY DIVISION
 APPROVED WITH CONDITIONS
 AS SPECIFIED IN THE LETTER OF APPROVAL
 DATED JAN 30 2012 FILE # 11-0236
 NO CHANGES ALLOWED WITHOUT PRIOR APPROVAL
 APPROVED PLANS MUST BE AT CONSTRUCTION

REVISIONS		
NO.	DATE	BY

RHODE ISLAND
DEPARTMENT OF TRANSPORTATION

ROUTE 146A
FROM ROUTE 146 TO PARK AVENUE
1R IMPROVEMENTS
 NORTH SMITHFIELD, RHODE ISLAND

GENERAL PLAN No. 4
STA. 18+50 TO STA. 24+50

CHECKED BY _____ DATE _____ SCALE 1"=20'

