

INDEX

| SHEET NO. | DESCRIPTION |
|-----------|-----------------------------------|
| 1 | COVER SHEET |
| 2 | TYPICAL SECTION, LEGEND AND NOTES |
| 3 | GENERAL PLAN NO. 1 |
| 4 | GENERAL PLAN NO. 2 |
| 5 | PROFILE NO. 1 |
| 6 | PROFILE NO. 2 |
| 7 | PROFILE NO. 3 |

THE CITY OF NEWPORT RHODE ISLAND

DEPARTMENT OF PUBLIC SERVICES

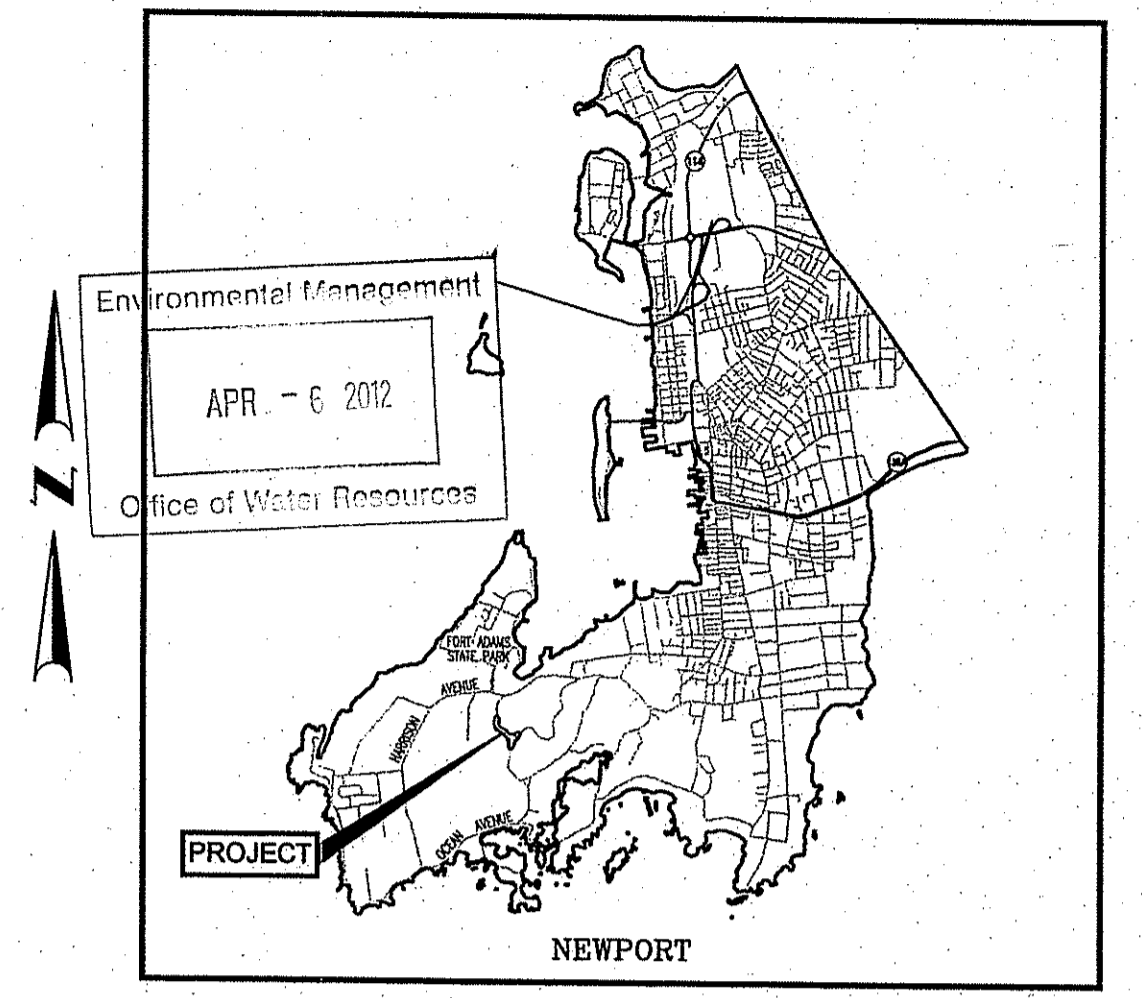
PLAN, PROFILE AND SECTIONS OF PROPOSED

RECONSTRUCTION OF HAMMERSMITH ROAD AND BEACON HILL ROAD

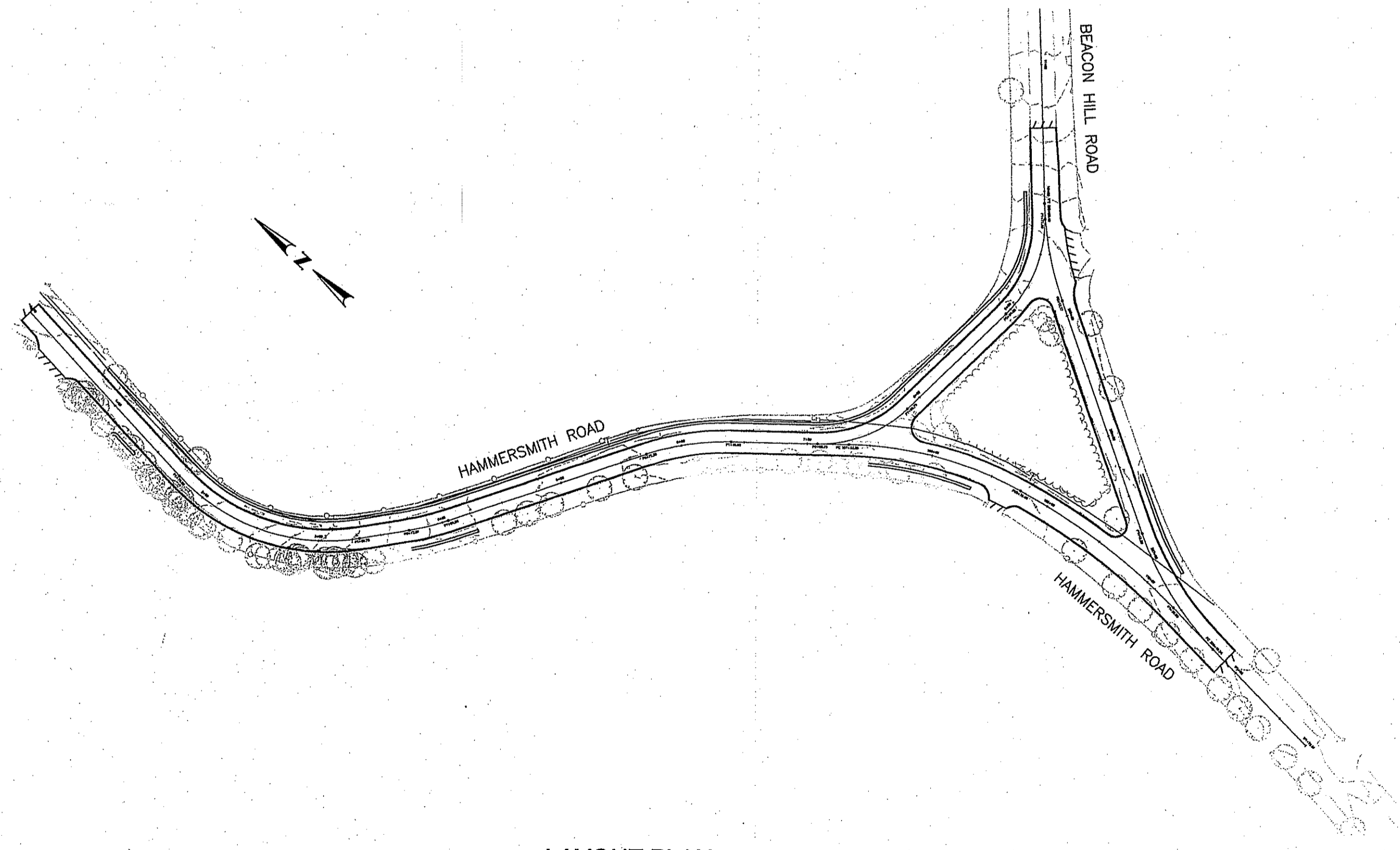
PAVEMENT STRUCTURE

2" BITUMINOUS SURFACE COURSE, TYPE I-2
2" BITUMINOUS BASE COURSE
12" GRAVEL BORROW SUBBASE COURSE

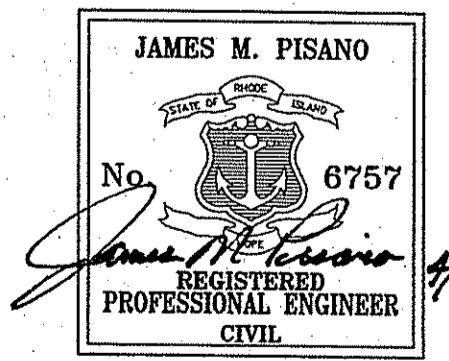
0.3 MILES



LOCATION MAP
SCALE: 1"=6000



RIDEM SUBMISSION
APRIL 2012



DEPARTMENT OF ENVIRONMENTAL MANAGEMENT
OFFICE OF WATER RESOURCES
FRESHWATER WETLANDS PROGRAM
APPROVED WITH CONDITIONS
AS SPECIFIED IN THE LETTER OF APPROVAL
DATED MAY 0 1 2012 FILE # 13-0068
NO CHANGES ALLOWED WITHOUT PRIOR APPROVAL
APPROVED PLANS MUST BE AT CONSTRUCTION SITE

Charles A. Harte

R.I. STANDARD SPECIFICATIONS AND STANDARD DETAILS

SPECIFICATIONS TO GOVERN THIS PROJECT ARE THE R.I. STANDARD SPECIFICATIONS FOR ROAD AND BRIDGE CONSTRUCTION, 2004 EDITION, AND THE STATE AND FEDERAL SPECIAL PROVISIONS INCLUDED IN THE CONTRACT DOCUMENTS. STANDARD DETAILS FOR THIS PROJECT ARE R.I. STANDARD DETAILS, 2004 EDITION, WITH ALL REVISIONS.

LAYOUT PLAN
SCALE: 1"=80'

SCALES OF DRAWINGS

| | |
|-----------------|-----------------------------|
| Plans | 1 inch = 20 feet |
| Profiles | 1 inch = 20 feet Horizontal |
| Profiles | 1 inch = 4 feet Vertical |
| Typical Section | 1 inch = 4 feet Horizontal |
| Typical Section | 1 inch = 4 feet Vertical |

BASE OF LEVELS
NGVD 29

