

LEGEND:

- EXISTING TREE LINE
- EXISTING CONTOURS
- FLAGGED WETLAND LINE
- 200' RIVERBANK WETLAND
- 50' PERIMETER WETLAND
- EXISTING FENCE
- EXISTING WALLS
- AREA DEPICTS "CREATED RIVER BANK WETLAND AREA" IDENTIFIED AS A CONDITION OF APPROVAL OF RIDEM WETLAND APPLICATION NO. 01-0289 (24 JANUARY 2003)
- APPROXIMATE 100-YEAR FLOOD PLAIN
- PROPOSED GAS PIPELINE
- PROPOSED STREAM CROSSING LOCATION.

MAY - 8 2012
Office of Water Resources

Kindly be advised that this Permit is not equivalent to a verification of the type or extent of freshwater wetlands on site.

- NOTES:**
- STREAM CROSSING LOCATIONS SHOWN WHERE SELECTED BY DCO ENERGY (PROJECT DESIGN-BUILD CONTRACTOR). THIS APPLICATION HAS BEEN PREPARED ON BEHALF OF THE PROJECT OPERATOR (RHODE ISLAND LFG GENCO, LLC) AND DEPICTS DETAILS AND FEATURES NOT DESIGNED BY GZA
 - BASE MAP DEVELOPED FROM THE FOLLOWING AUTOCAD DRAWING FILES:
 - STRUCTURAL DRAWINGS**
 - 1529-001 SITE LAYOUT-CTG.DWG, TITLED "PHASE VI (FINISH PRI GR)-1-31-07.DWG", PROVIDED BY DIPRETE ENGINEERING TRANSMITTED TO GZA ON 01/26/2011.
 - CIVIL DRAWINGS**
 - 1529-001 MAPPING FROM RIRRC, PROVIDED BY DIPRETE ENGINEERING TRANSMITTED TO GZA ON 01/24/2011.
 - 1529-001 TOPO FROM RIRRC, PROVIDED BY DIPRETE ENGINEERING TRANSMITTED TO GZA ON 01/24/2011.
 - ACAD-1529-001 PROPERTY LINE, TITLE "ACAD-1529-001 PROPERTY LINE", PREPARED BY DIPRETE ENGINEERING TRANSMITTED TO GZA ON 8/13/2010.
 - WETLAND FLAGS DRAWINGS**
 - WETLAND FLAGS, 08053FIELD26JUNE08.DWG, TITLE "WETLAND FLAGS, 08053FIELD26JUNE08.DWG", PREPARED BY ECOTONES, INC. TRANSMITTED TO GZA ON 06/27/2008.
 - 100-YEAR FLOOD PLAIN FROM A PDF TITLED "CONSTRUCTION OF CEDAR SWAMP BROOK RELOCATION FOR PHASE V LANDFILL-CEDAR SWAMP BROOK PROFILE" BY PARE ENGINEERING TRANSMITTED TO GZA ON SEPTEMBER 29, 2009"

DEPARTMENT OF ENVIRONMENTAL MANAGEMENT
OFFICE OF WATER RESOURCES
FRESHWATER WETLANDS PROGRAM
APPROVED WITH CONDITIONS
AS SPECIFIED IN THE LETTER OF APPROVAL
DATED MAY 22 2012 FILE # 12-0057
NO CHANGES ALLOWED WITHOUT PRIOR APPROVAL
APPROVED PLANS MUST BE AT CONSTRUCTION SITE

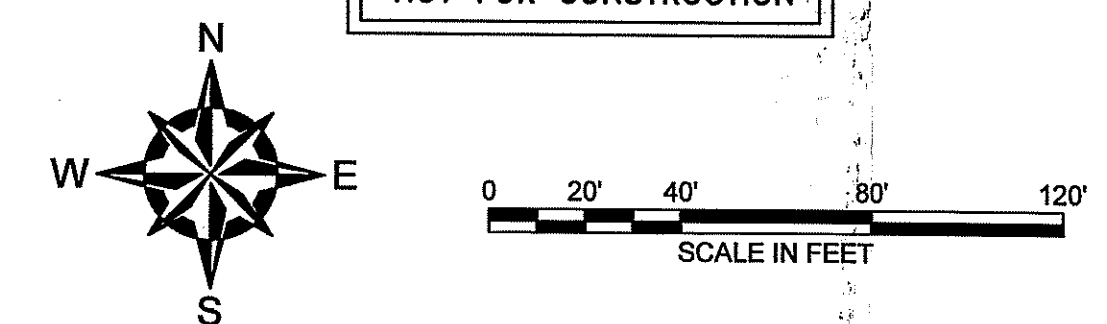
Margaret D. Woodard

LIMIT OF WORK:

THERE ARE TWO LIMITS OF DISTURBANCE DISPLAYED ON THIS PLAN.

- APPROVED LIMIT OF DISTURBANCE RIDEM PERMIT APP# 08-0356 (3/17/2010) AND PERMIT MODIFICATION # 1 (5/14/2011).
- PROPOSED TEMPORARY LIMIT OF DISTURBANCE FOR THE CURRENT PRELIMINARY DETERMINATION APPLICATION.

PERMITTING ONLY
NOT FOR CONSTRUCTION



UNLESS SPECIFICALLY STATED BY WRITTEN AGREEMENT, THIS DRAWING IS THE SOLE PROPERTY OF GZA GEOENVIRONMENTAL, INC. (GZA). THE INFORMATION SHOWN ON THE DRAWING IS SOLELY FOR USE BY GZA'S CLIENT OR THE CLIENT'S DESIGNATED REPRESENTATIVE FOR THE SPECIFIC PROJECT AND LOCATION IDENTIFIED ON THE DRAWING. THE DRAWING SHALL NOT BE TRANSFERRED, REUSED, COPIED, OR ALTERED IN ANY MANNER FOR USE AT ANY OTHER LOCATION OR FOR ANY OTHER PURPOSE WITHOUT THE PRIOR WRITTEN CONSENT OF GZA. ANY TRANSFER, REUSE, OR MODIFICATION TO THE DRAWING BY THE CLIENT OR OTHERS, WITHOUT THE PRIOR WRITTEN EXPRESS CONSENT OF GZA, WILL BE AT THE USER'S SOLE RISK AND WITHOUT ANY RISK OR LIABILITY TO GZA.

1	REVISE LIMIT OF DISTURBANCE AT STREAM CROSSING	MEA	5-3-2012
NO.	ISSUE/DESCRIPTION	BY	DATE
RHODE ISLAND RESOURCE RECOVERY CORPORATION CENTRAL LANDFILL JOHNSTON, RHODE ISLAND			
RIDEM FRESH WATER WETLAND APPLICATION STREAM CROSSING PROPOSED CONDITIONS GAS LINE ALONG SHUN PIKE			
PREPARED BY:	GZA GeoEnvironmental, Inc. Engineers and Scientists 533 BROADWAY PROVIDENCE, RHODE ISLAND 02909 (401) 421-4140		PREPARED FOR: RHODE ISLAND RESOURCE RECOVERY CORPORATION CENTRAL LANDFILL, JOHNSTON, RHODE ISLAND
PROJ MGR: IR	REVIEWED BY: EAS	CHECKED BY: TRG	FIGURE
DESIGNED BY: RAC	DRAWN BY: CRD	SCALE: (1"=40')	1
DATE: MARCH 2012	PROJECT NO. 33415.08	REVISION NO. 0	SHEET NO. 1 of 1