

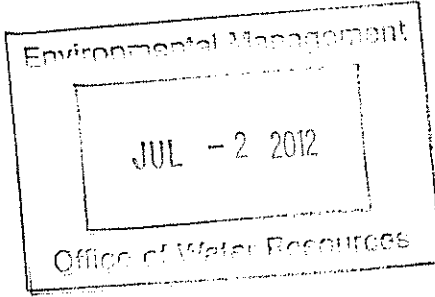
Greenville Water District

GWD/SWSB Proposed Interconnection

Burlingame Road: AP 47 Lot 92, 96, 151, 152

Smithfield, Rhode Island

Pare Project No. 97049.23

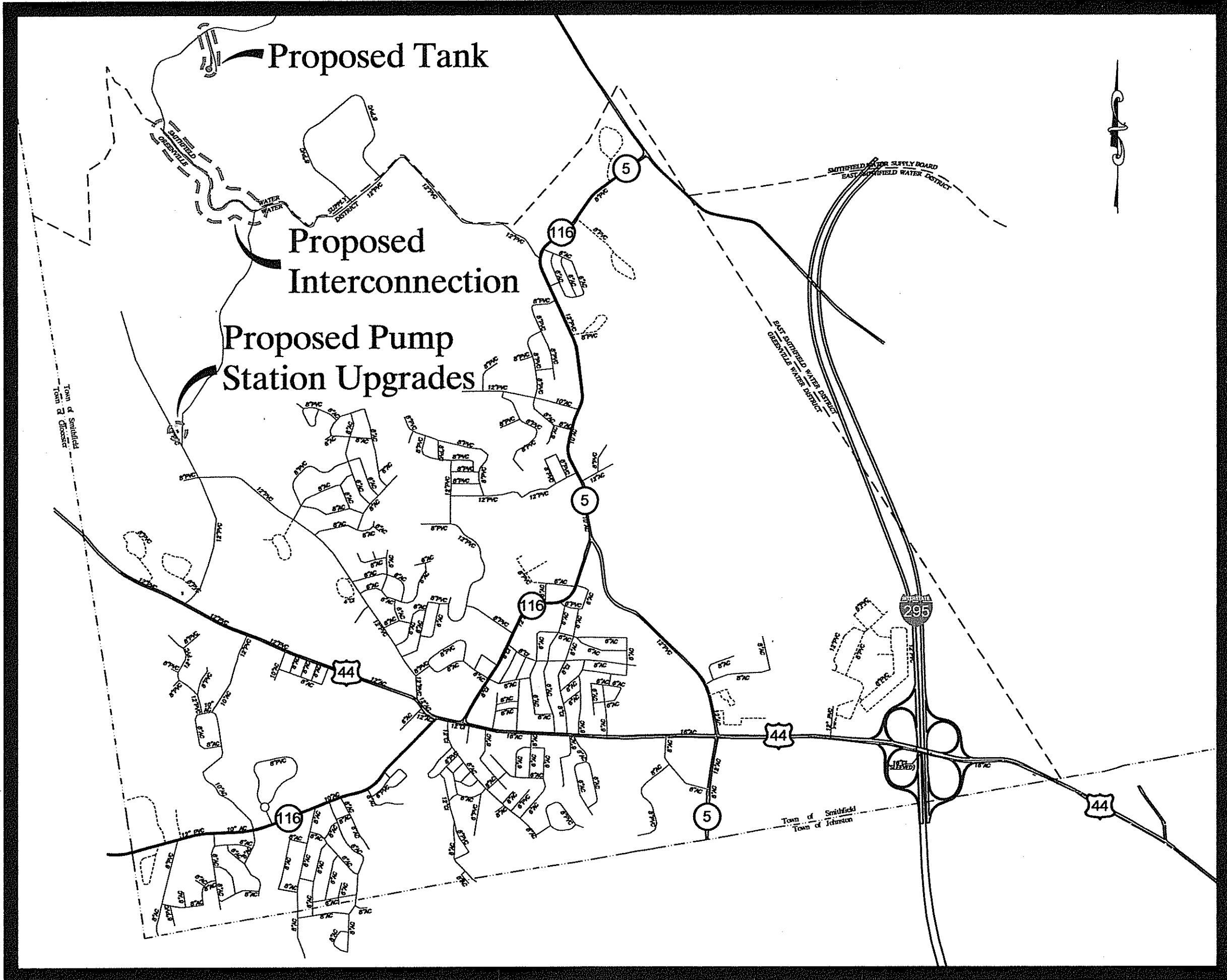


PARE CORPORATION
ENGINEERS - SCIENTISTS - PLANNERS
8 BLACKSTONE VALLEY PLACE
LINCOLN, RI 02865
401-334-4100



Electrical, Instrumentation
& Control Systems Design

5 Medallion Center, Greeley Street, Merrimack, NH 03054
Phone: 603/429-3313 Fax: 603/429-3466



Locus Plan
SCALE: 1"=2,000'

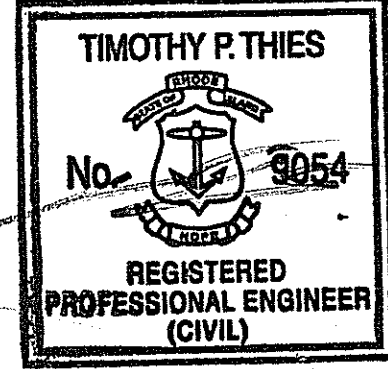
Index of Drawings

Sheet No.	Dwg. No.	Description
1	C0.0	COVER SHEET
2	C1.0	OVERALL SYSTEM MAP
3	C2.0	GENERAL NOTES & LEGEND
4-7	C3.1-C3.4	WATER MAIN LAYOUT PLAN & PROFILE No.1-4
8	C4.1	TANK SITE PLAN
	C4.2	ALTITUDE VALVE VAULT AND TANK DETAILS (Not Included)
	C5.1	PUMP STATION SITE PLAN (Not Included)
	C5.2	PUMP STATION SECTIONS (Not Included)
9-11	C6.1-C6.3	DETAILS No.1-3

DEPARTMENT OF ENVIRONMENTAL MANAGEMENT
OFFICE OF WATER RESOURCES
FRESHWATER WETLANDS PROGRAM
REVIEWED SITE PLAN APPLICATION NO. 12-0113
DATED JUL 24 2012
SEE LETTER OF SAME DATE.

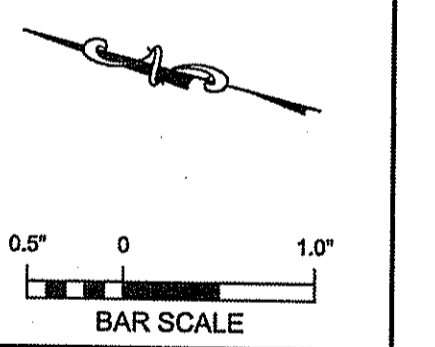
Charles A. Herbert

RIDEM PERMIT SUBMISSION
JUNE 2012



9-2-12

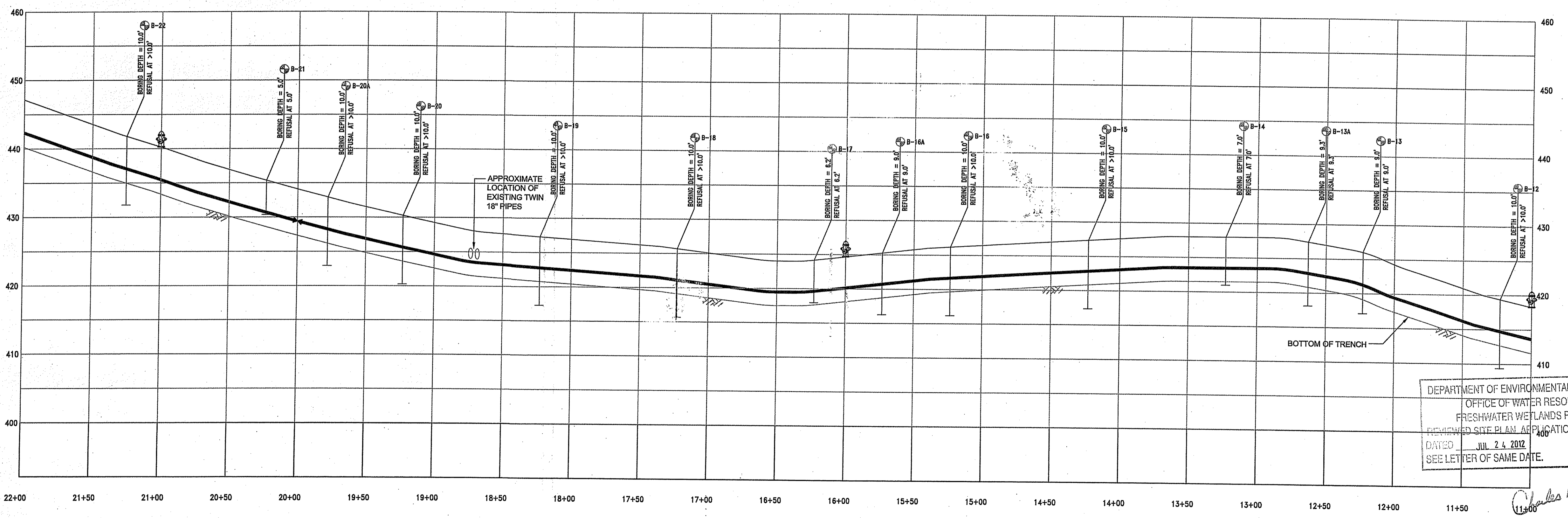
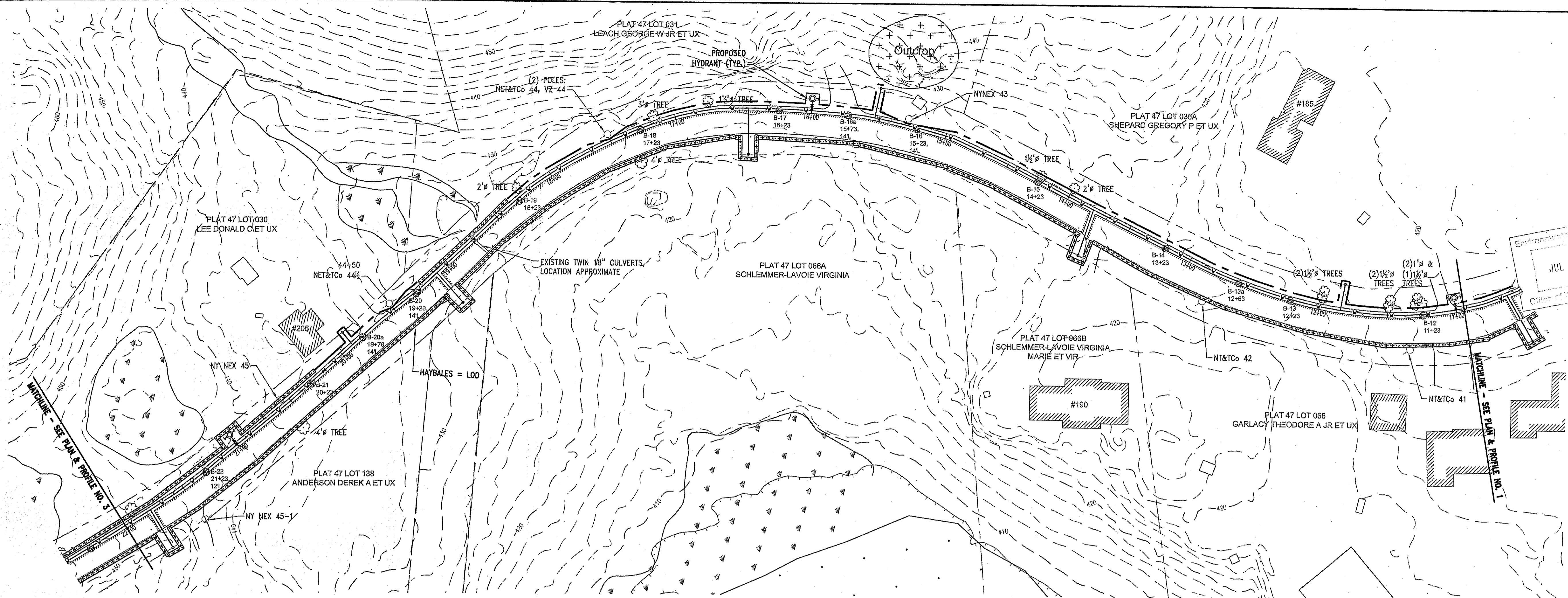
Greenville Water District
GWD/SWSB Proposed Interconnection
 Burlingame Road - AP #47 / Lot # 92, 96, 151, 152
 Smithfield, Rhode Island



REVISIONS:

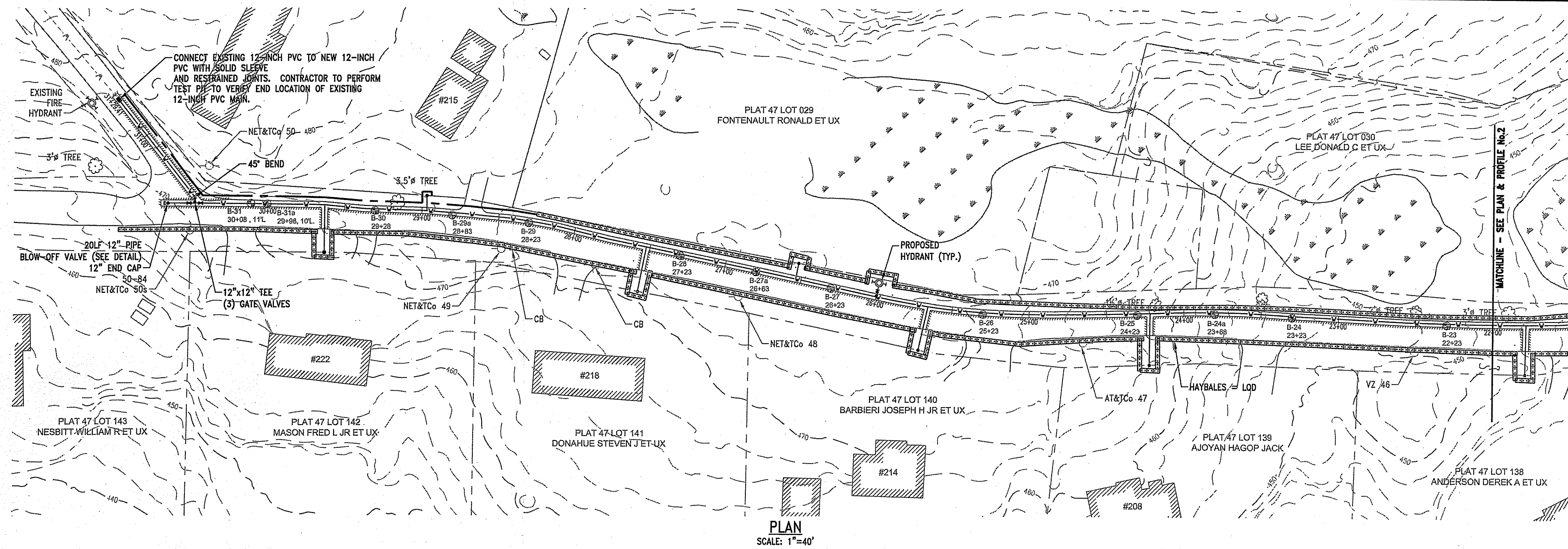
NO.	DESCRIPTION

PROJECT NO.: 97049.23
 DATE: JUNE 2012
 SCALE: AS NOTED
 DESIGNED BY: SPD
 CHECKED BY: PDD
 DRAWN BY: AKL
 APPROVED BY: TPT
 DRAWING TITLE:

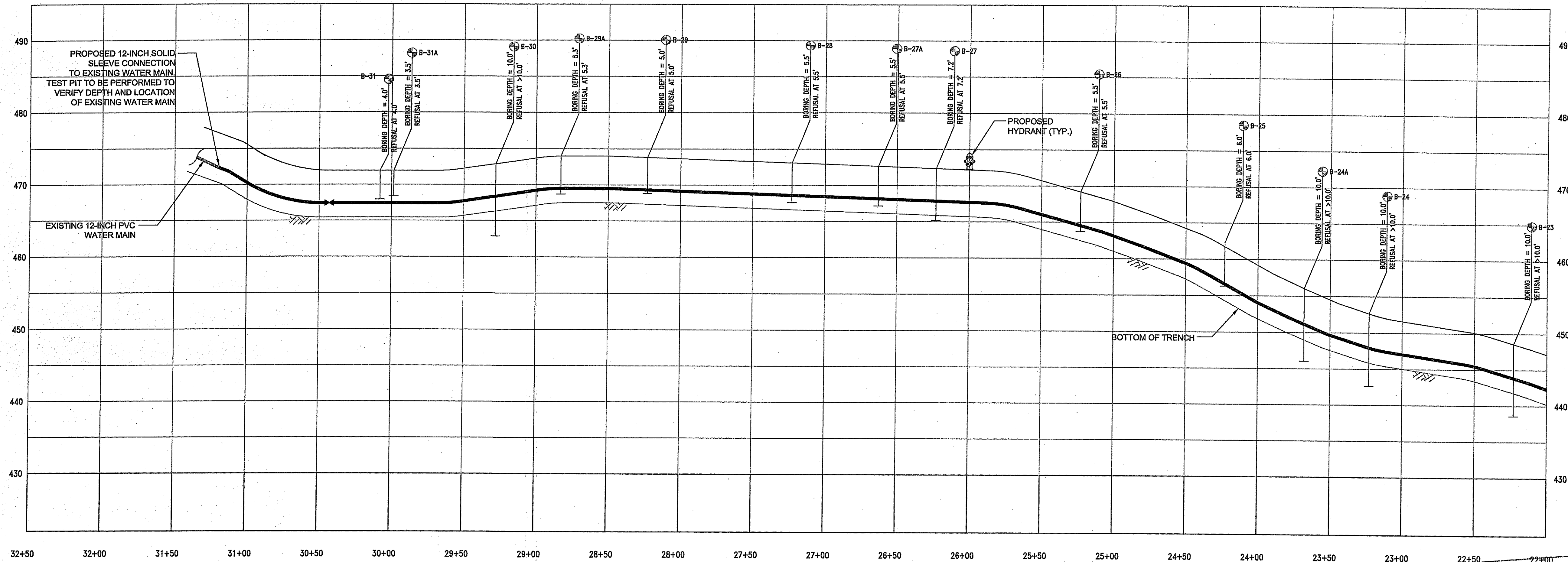


DEPARTMENT OF ENVIRONMENTAL MANAGEMENT
 OFFICE OF WATER RESOURCES
 FRESHWATER WETLANDS PROGRAM
 REVIEWED SITE PLAN APPLICATION NO.: 12-0113
 DATED JUL 24 2012
 SEE LETTER OF SAME DATE.

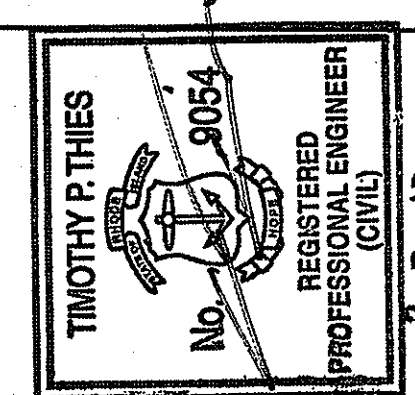
Charles A. Haber



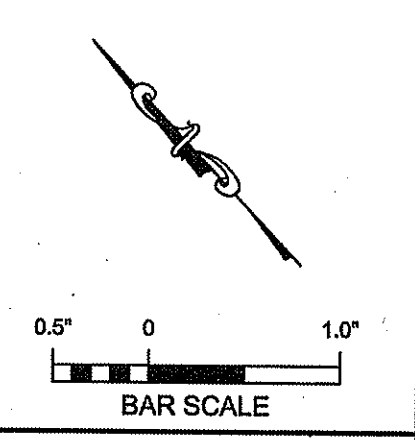
PLAN
SCALE: 1"=40'



PROFILE
SCALE: 1"=40' HORIZ.
1"=8' VERT.



Greenville Water District
 GWD/SWSB Proposed Interconnection
 Burlingame Road - AP #47 / Lot # 92, 96, 151, 152
 Smithfield, Rhode Island



REVISIONS:

NO.	DATE	DESCRIPTION

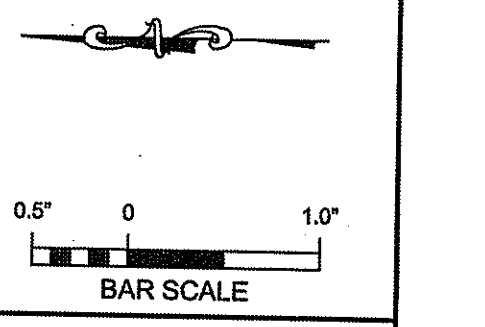
PROJECT NO.: 97049.23
 DATE: JUNE 2012
 SCALE: AS NOTED
 DESIGNED BY: SPD
 CHECKED BY: PDD
 DRAWN BY: AKL
 APPROVED BY: TPT
 DRAWING TITLE:

DEPARTMENT OF ENVIRONMENTAL MANAGEMENT
 OFFICE OF WATER RESOURCES
 FRESHWATER WETLANDS PROGRAM
 REVIEWED SITE PLAN APPLICATION NO.: 12-0113
 DATED JUL 24 2012
 SEE LETTER OF SAME DATE.
Charles A. Haber

WATER MAIN LAYOUT
 PLAN & PROFILE NO. 3

DRAWING NO.:
C3.3
 SHEET NO. 6 OF 11

Greenville Water District
GWD/SWSB Proposed Interconnection
 Burlingame Road - AP #47 / Lot # 92, 96, 151, 152
 Smithfield, Rhode Island



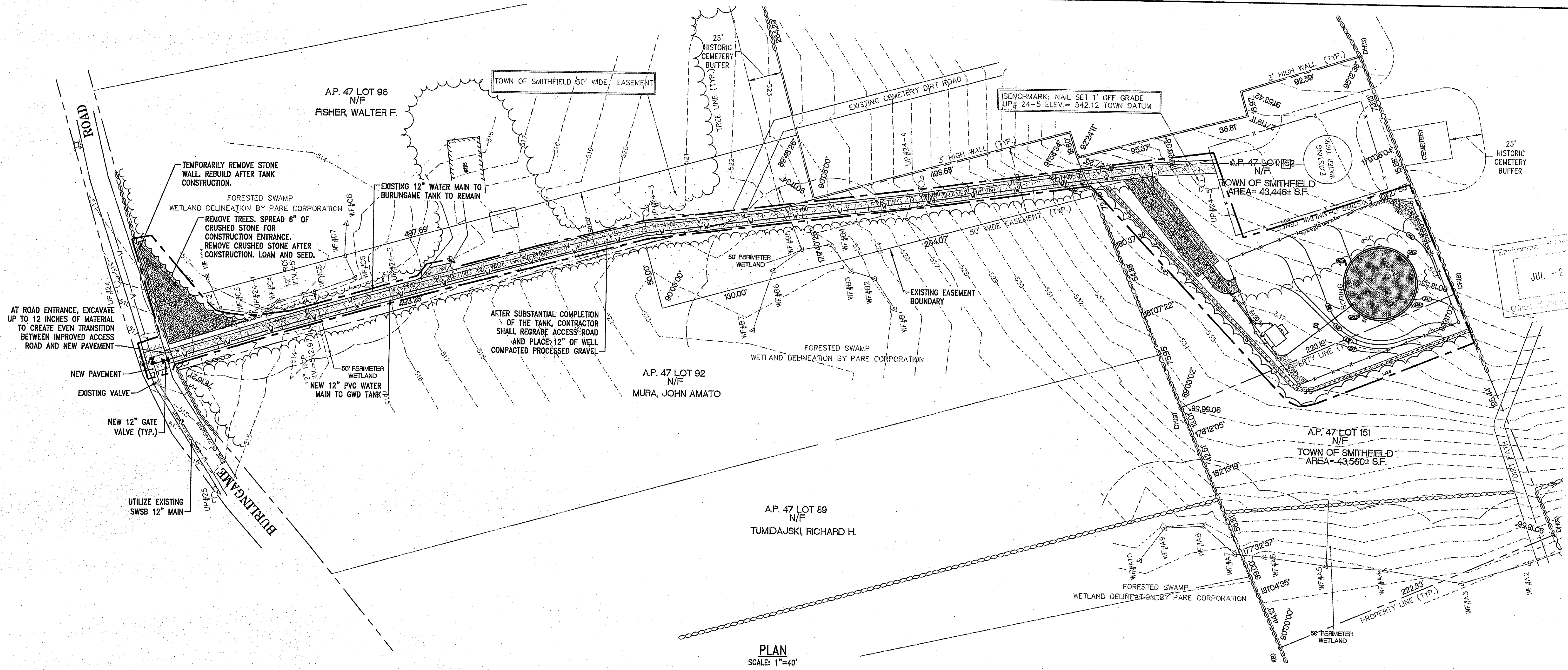
REVISIONS:

NO.	DATE	DESCRIPTION

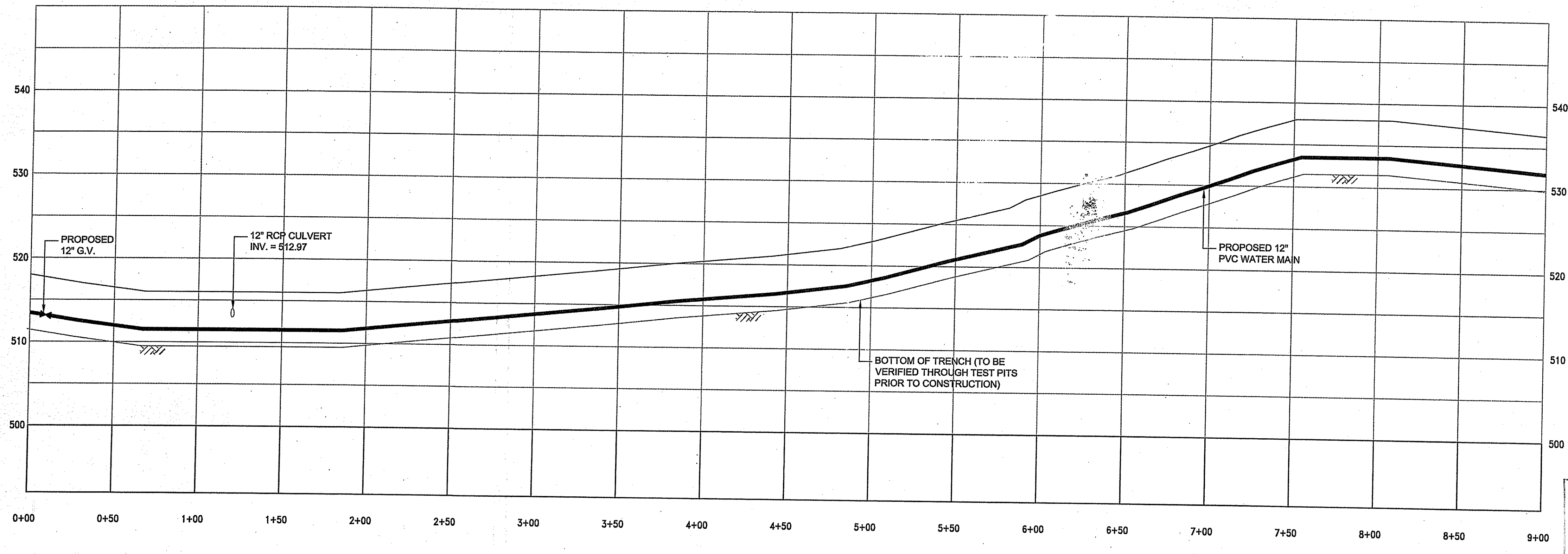
PROJECT NO.: 97049.23
 DATE: JUNE 2012
 SCALE: AS NOTED
 DESIGNED BY: SPD
 CHECKED BY: PDD
 DRAWN BY: AKL
 APPROVED BY: TPT
 DRAWING TITLE:

WATER MAIN LAYOUT
 PLAN & PROFILE NO. 4

DRAWING NO.: **C3.4**
 SHEET NO. 7 OF 14

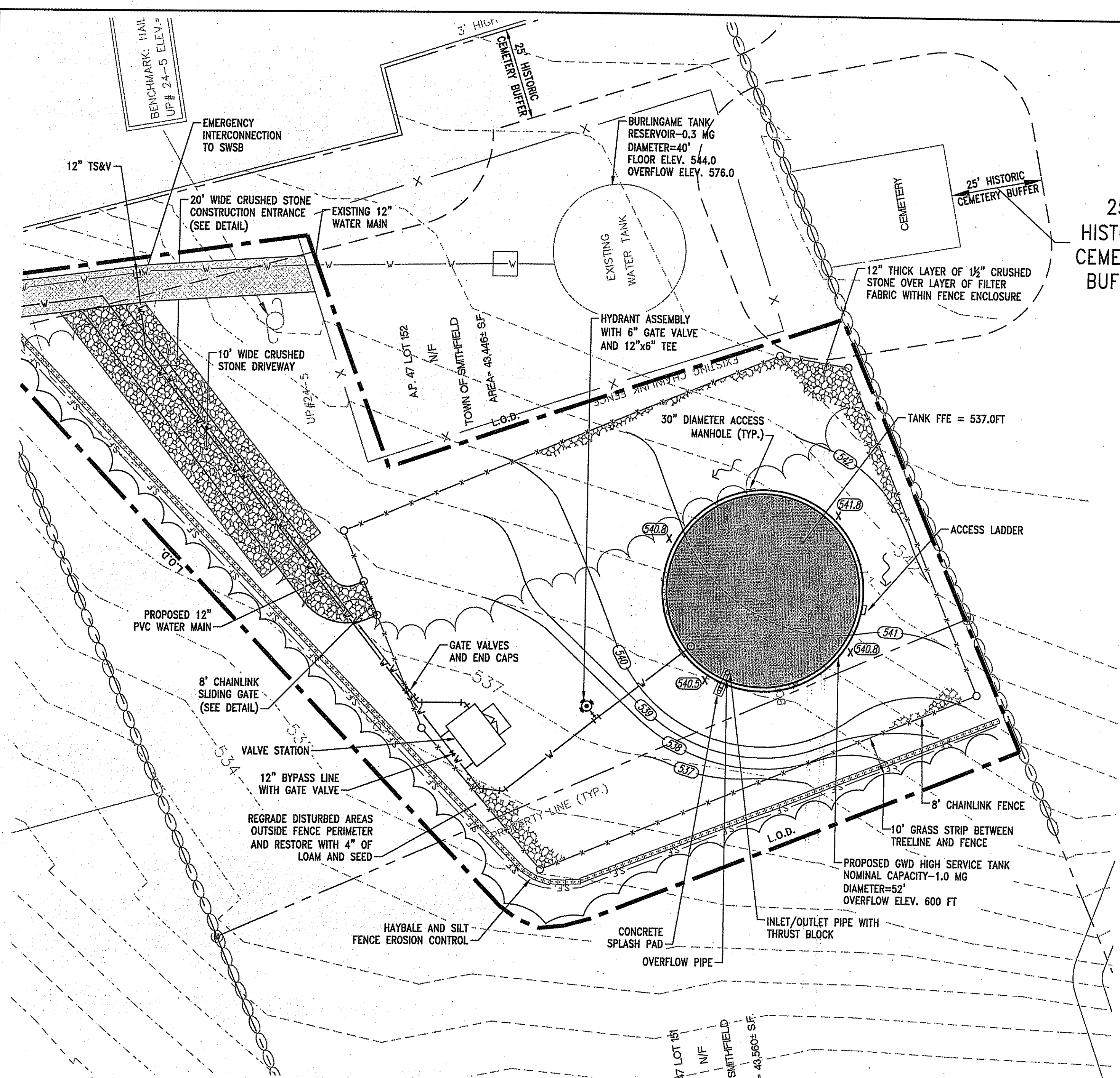


PLAN
 SCALE: 1"=40'

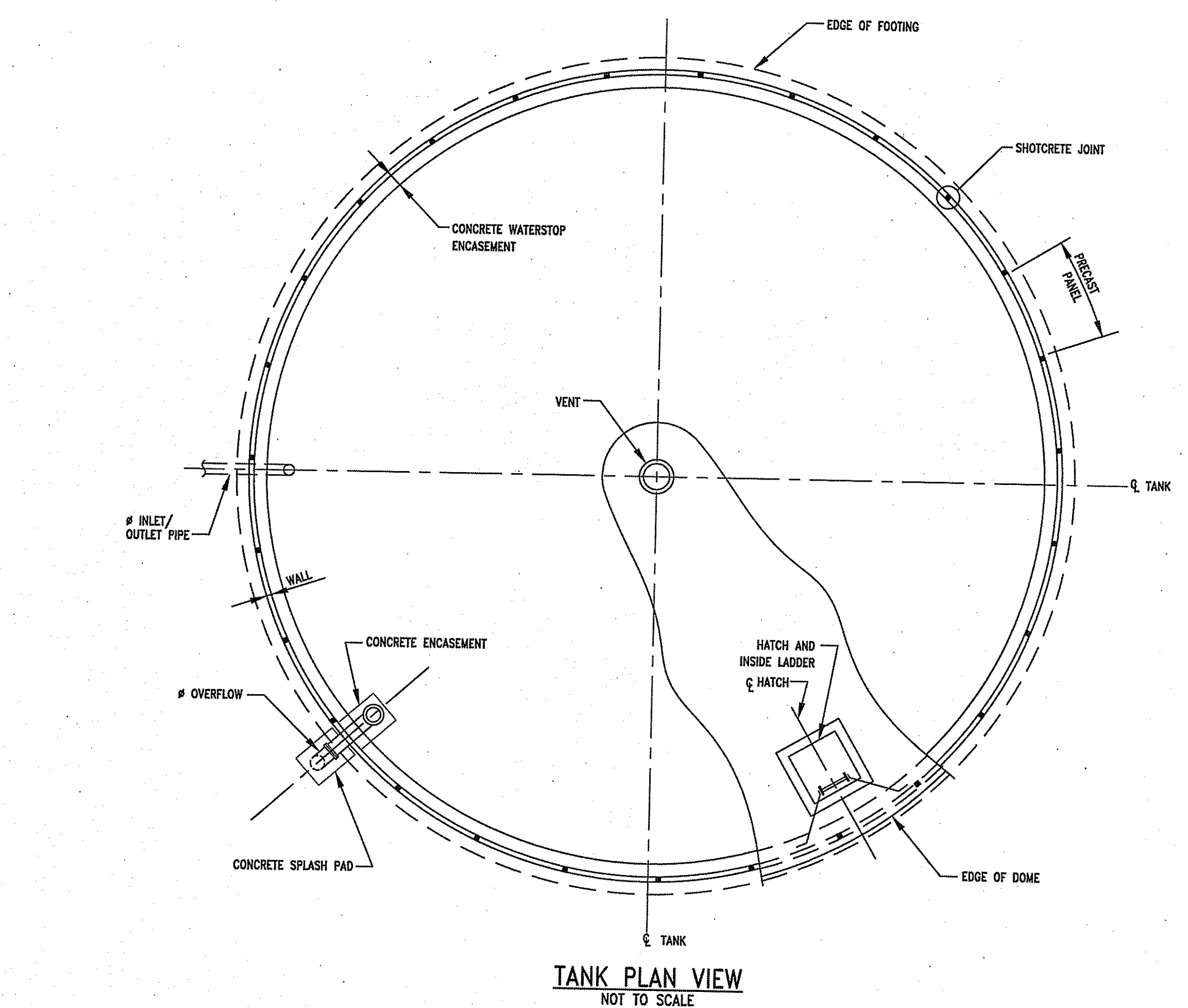


PROFILE
 SCALE: 1"=40' HORIZ.
 1"=8' VERT.

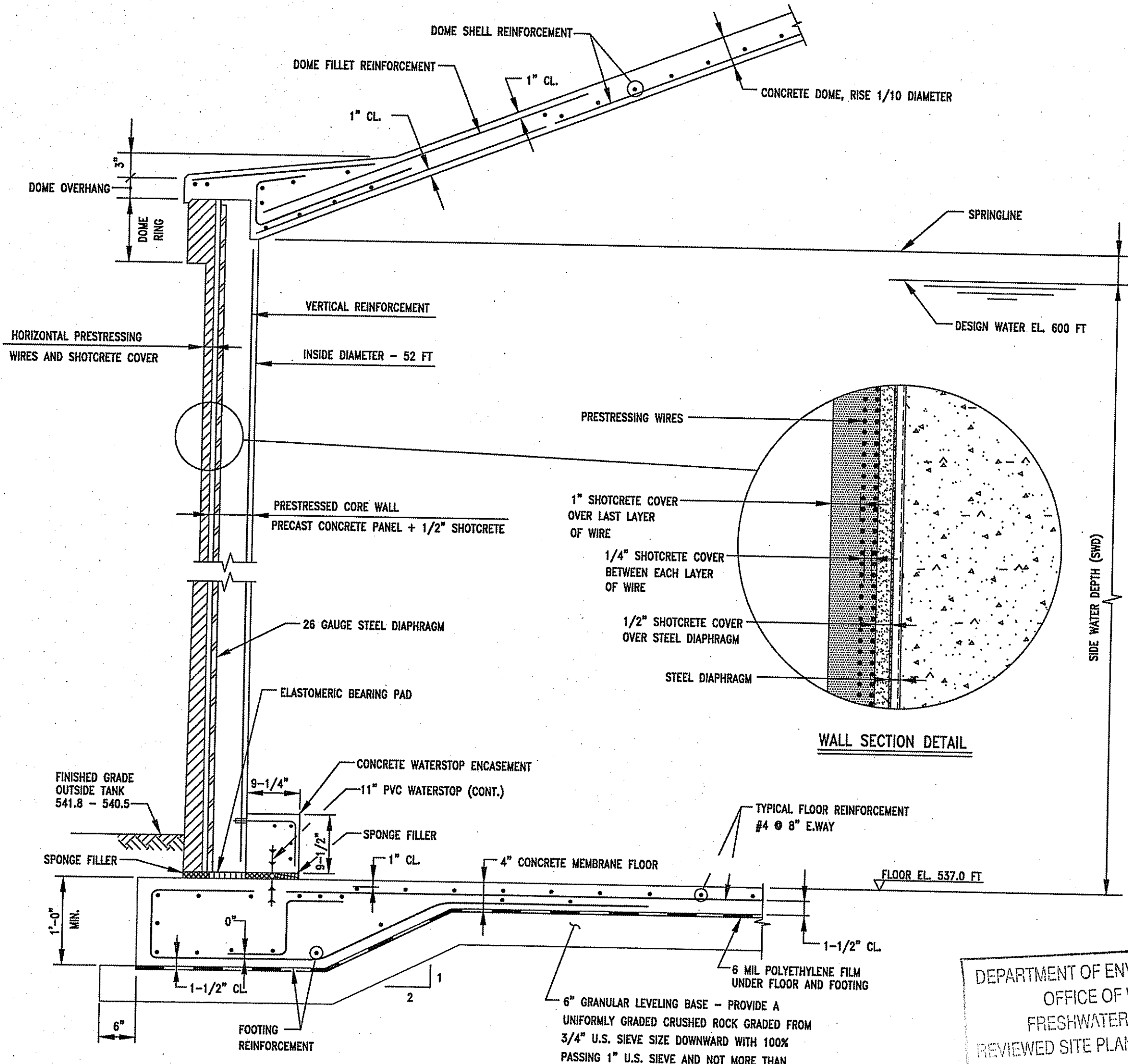
DEPARTMENT OF ENVIRONMENTAL MANAGEMENT
 OFFICE OF WATER RESOURCES
 FRESHWATER WETLANDS PROGRAM
 REVIEWED SITE PLAN APPLICATION NO. 12-0113
 DATED JUL 24, 2012
 SEE LETTER OF SAME DATE.
Charles A. Hester



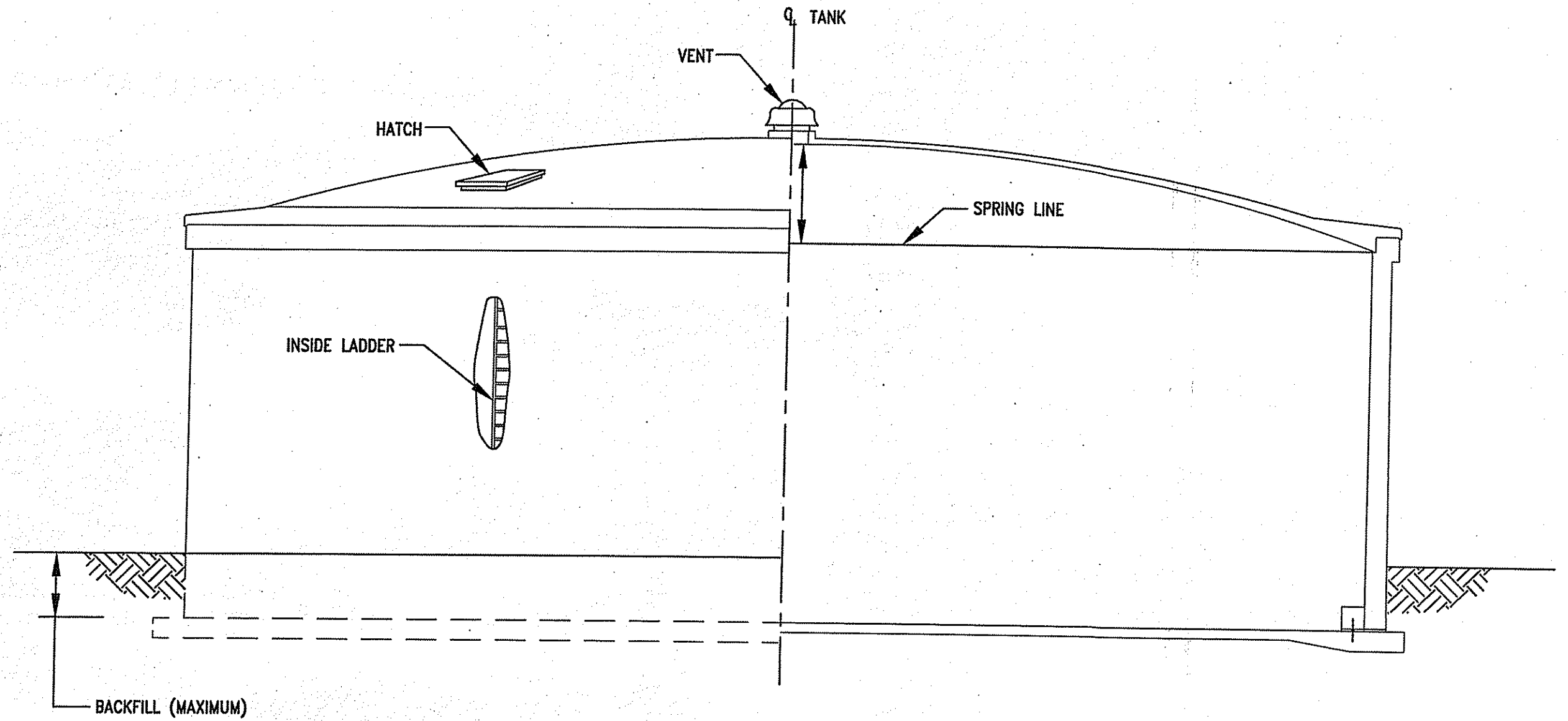
SITE PLAN
SCALE: 1"=20'



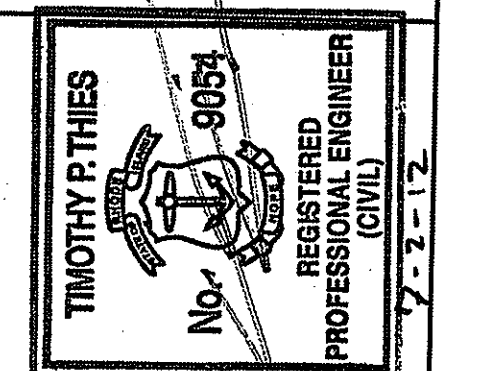
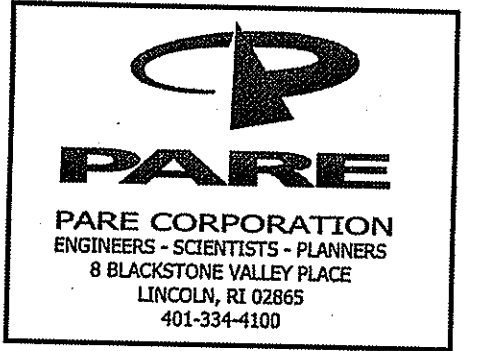
TANK PLAN VIEW
NOT TO SCALE



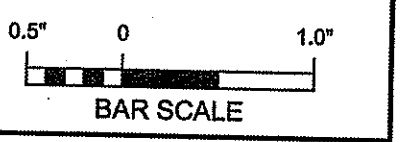
TANK SECTION
NOT TO SCALE



TANK ELEVATION AND SECTION
NOT TO SCALE



Greenville Water District
GWD/SWSB Proposed Interconnection
Burlingame Road - AP #47 / Lot # 92, 96, 151, 152
Smithfield, Rhode Island



REVISIONS:

NO.	DESCRIPTION

PROJECT NO.: 97049.23
DATE: JUNE 2012
SCALE: AS NOTED
DESIGNED BY: SPD
CHECKED BY: PDD
DRAWN BY: AKL
APPROVED BY: TPT
DRAWING TITLE:

TANK SITE PLAN

DRAWING NO.: **C4.1**
SHEET NO. 8 OF 11

DEPARTMENT OF ENVIRONMENTAL MANAGEMENT
OFFICE OF WATER RESOURCES
FRESHWATER WETLANDS PROGRAM
REVIEWED SITE PLAN APPLICATION NO. 12-D1B
DATED JUL 24 2012
SEE LETTER OF SAME DATE.
Charles R. H...

